

Architects and Planners
 I.S.K. Reeves, V, F.A.I.A.
 Ian A. Reeves, A.I.A.
 Susan Garntt, A.I.A., LEED-AP
 333 N. Knowles Ave.
 Winter Park, Florida 32789
 P: (407) 647-1706
 Corporate Registration
 Number: AAC001197

**ORANGE COUNTY
 FIRE STATION
 87**

**ORANGE COUNTY
 FIRE RESCUE**

BID & PERMIT SET

The architect hereby expressly reserves his common law copyright and other property rights in these drawings. These drawings shall not be reproduced without written permission and consent of the architect, nor are they to be assigned to any party without first obtaining written permission and consent.

• revisions/addenda

Number	Description	Date Issued
2	Addendum 2	9/6/19

• sheet title
**ARCHITECTURAL
 SITE PLAN**

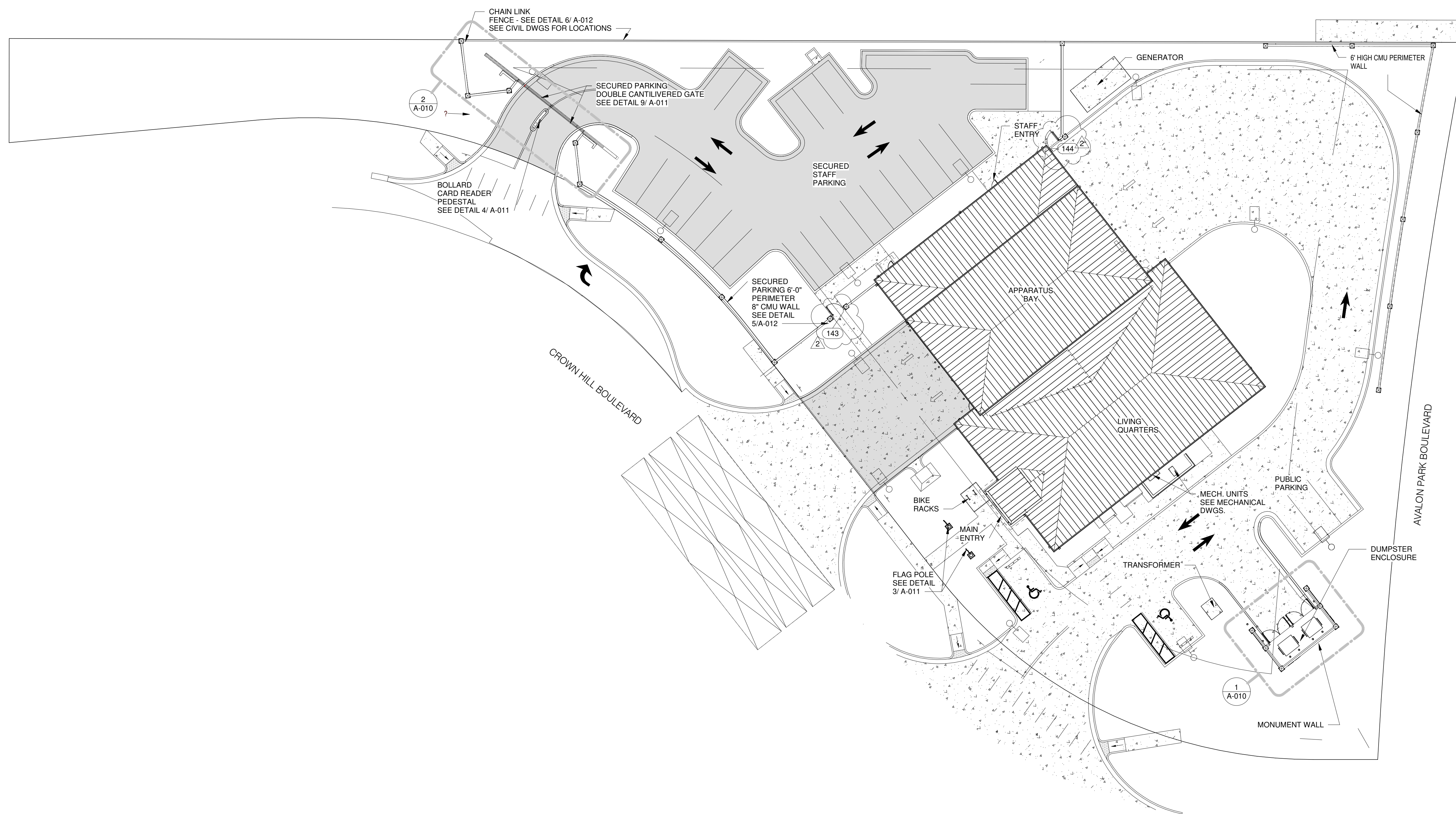
• scale: As indicated
 • drawn: EA
 • checked: LG
 • approved: IR
 • date: 06/12/2019

• project no.

963

• sheet number:

A-001



BID ALTERNATES

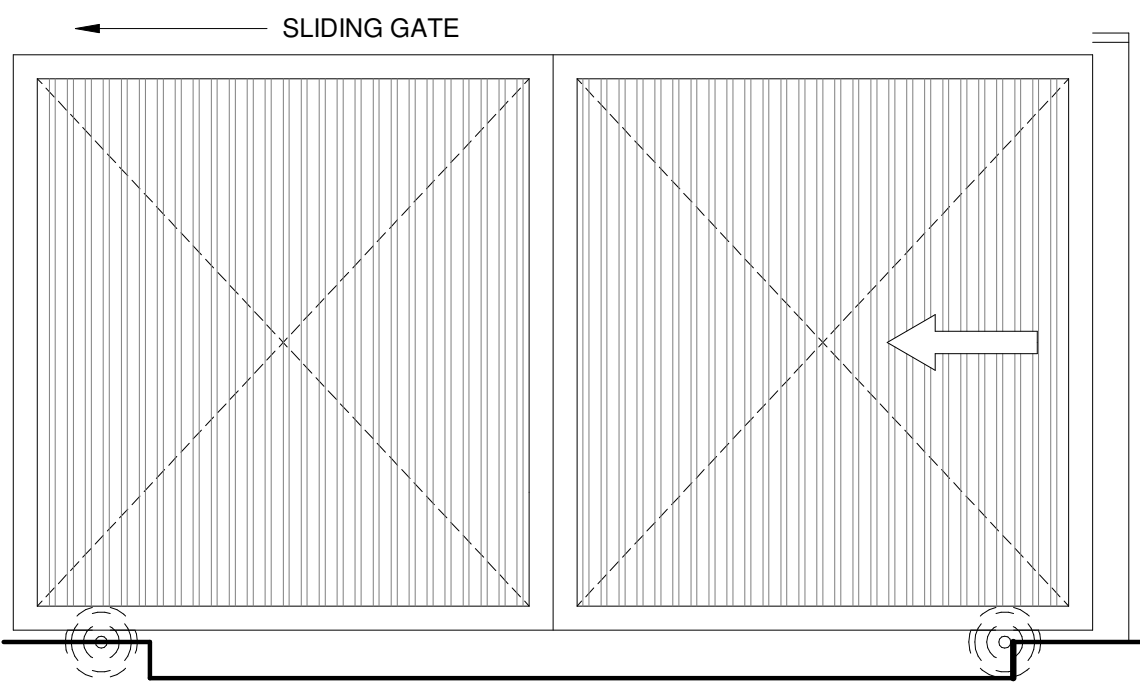
BID ALTERNATE DEDUCT #1 -
 REPLACE ALL MASONRY FENCING WITH 6' BLACK VINYL COATED CHAIN LINK (NO SLATS).
 LEAVE THE DECORATIVE WALLS AT THE DUMPSTER AND SIGN LOCATION.
 THERE IS NO OVERALL DEDUCTION IN FENCING/ WALLS WITH THIS BID ALTERNATE.
 ON PERIMETER FENCING SEE DETAILS 5, 6, 7 AND 8/A-012

1 ARCHITECTURAL SITE PLAN
 1" = 20'-0"

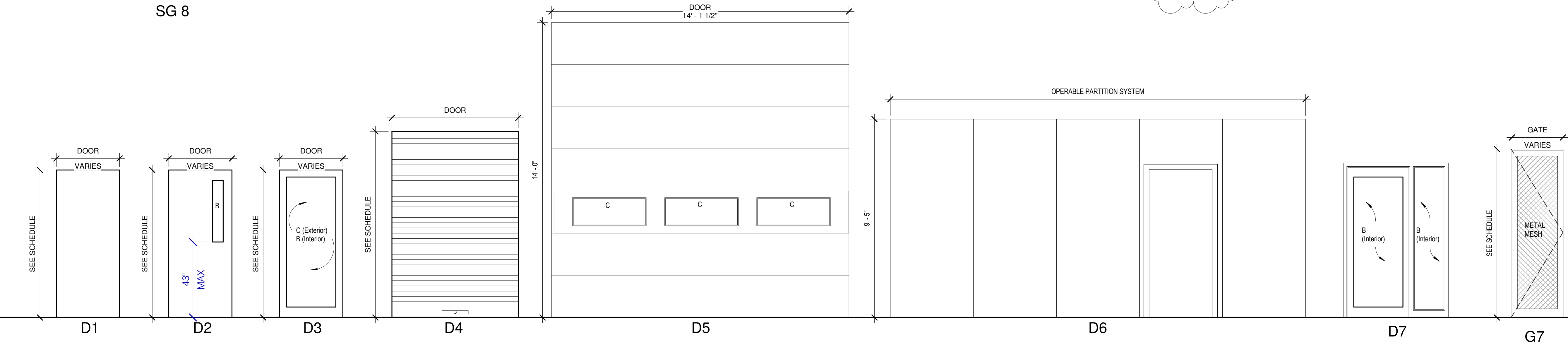


DOOR SCHEDULE - STATION 87

Mark	TYPE	HEIGHT	WIDTH	DOOR MATERIAL	GLASS TYPE	FRAME MATERIAL	ELECT. COMBINATION LOCK	CLOSER	HEAD	JAMB	SILL	FIRE RATING	DOOR HARDWARE	Comments
100	D3	7'-0"	3'-0"	ALUM / GL	C	ALUM	Yes	Yes	3/A-612	11/A-612	7/A-612		1.0	ALUMINUM / GLASS DOOR AND FRAME - FRONT ENTRY DOOR ONLY
100A	D2	7'-0"	3'-0"	SC	B	HM	Yes	Yes	4/A-611	9/A-611	13/A-611		6.0	VIEW LITE
101	D3	7'-0"	3'-0"	HM/GL	B	HM	No	No	4/A-611	9/A-611	13/A-611		5.0	SIDE LITE
102	D1	7'-0"	3'-0"	SC		HM	No	Yes	4/A-611	9/A-611	13/A-611		15.0	
104	D1	7'-0"	3'-0"	HM		HM	Yes	Yes	4/A-612	11/A-612	7/A-612		3.0	
105	D1	7'-0"	3'-0"	SC		HM	No	Yes	4/A-611	9/A-611	13/A-611	45 min	20.0	
106A	D2	7'-0"	3'-0"	SC		HM	No	Yes	9/A-611		13/A-611	20 min	19.0	VIEW LITE
106C	D2	7'-0"	3'-0"	SC		HM	No	Yes	9/A-611		13/A-611	20 min	19.0	VIEW LITE
106D	D2	7'-0"	3'-0"	SC		HM	No	Yes	9/A-611		13/A-611	20 min	7.0	VIEW LITE
107	DBL D1	7'-0"	6'-0"	HM		HM	Yes	No	3/A-612	11/A-612	7/A-612		2.0	
110	D3	7'-0"	3'-0"	HM	C	HM	Yes	Yes	3/A-612	11/A-612	7/A-612		3.0	
110A	D1	7'-0"	3'-0"	SC		PANEL DR	No	No	12/A-611	16/A-611	12/A-611		11.0	OPERABLE PARTITION DOOR, REFER TO MANUFACTURER
112	D4	7'-0"	5'-4"	STL		STL	No	No	5/A-611	11/A-611	10/A-611		23.0	COILING DOOR - PANTRY, PROVIDE LOCKING MECHANISM
113	D4	7'-0"	5'-4"	STL		STL	No	No	5/A-611	11/A-611	10/A-611		23.0	COILING DOOR - PANTRY, PROVIDE LOCKING MECHANISM
114	D4	7'-0"	5'-4"	STL		STL	No	No	5/A-611	11/A-611	15/A611		23.0	COILING DOOR - PANTRY, PROVIDE LOCKING MECHANISM
115	D1	7'-0"	3'-0"	SC		HM	No	No	4/A-611	9/A-611	13/A-611		18.0	
117	D1	7'-0"	3'-0"	SC		HM	No	No	4/A-611	9/A-611	13/A-611		18.0	
118	D1	7'-0"	3'-0"	SC		HM	No	Yes	4/A-611	9/A-611	13/A-611		15.0	
119	D2	7'-0"	3'-0"	SC	B	HM	No	Yes	4/A-611	9/A-611	13/A-611	45 min	9.0	VIEW LITE
120	D1	7'-0"	3'-0"	SC		HM	No	No	4/A-611	9/A-611	13/A-611		18.0	
121	D1	7'-0"	3'-0"	SC		HM	No	Yes	4/A-611	9/A-611	13/A-611		15.0	
122	D1	7'-0"	3'-0"	SC		HM	No	No	4/A-611	9/A-611	13/A-611		18.0	
123	D1	7'-0"	3'-0"	SC		HM	No	No	4/A-611	9/A-611	13/A-611		18.0	
124	D1	7'-0"	3'-0"	SC		HM	No	No	4/A-611	9/A-611	13/A-611		18.0	
125	D1	7'-0"	3'-0"	SC		HM	No	No	4/A-611	9/A-611	13/A-611		18.0	
126	D1	7'-0"	3'-0"	SC		HM	No	No	4/A-611	9/A-611	13/A-611		18.0	
127	D1	7'-0"	3'-0"	SC		HM	No	Yes	4/A-611	9/A-611	13/A-611		15.0	
128	D2	7'-0"	3'-0"	SC	B	HM	No	Yes	4/A-611	9/A-611	13/A-611	45 min	9.0	VIEW LITE
129	D2	7'-0"	3'-0"	SC	B	HM	No	Yes	4/A-611	9/A-611	13/A-611		10.0	VIEW LITE
130	D1	7'-0"	3'-0"	HM		HM	No	Yes	4/A-612	8/A-612	7/A-612		4.0	
130A	D5	14'-0"	14'-0"	STL		STL	No	No	14/A-612	13/A-612	14/A-612		22.0	LEVEL 'D' IMPACT RESISTANT OVERHEAD SECTIONAL DOORS
130B	D5	14'-0"	14'-0"	STL		STL	No	No	14/A-612	13/A-612	14/A-612		22.0	LEVEL 'D' IMPACT RESISTANT OVERHEAD SECTIONAL DOORS
130C	D2	7'-0"	3'-0"	HM		HM	No	Yes	3/A-611	8/A-611	13/A-611	45 min	8.0	VIEW LITE
130D	D2	7'-0"	3'-0"	HM		HM	No	Yes	3/A-611	8/A-611	13/A-611	45 min	8.0	VIEW LITE
130E	D1	7'-0"	3'-0"	HM		HM	No	Yes	4/A-612	8/A-612	7/A-612		4.0	COMBINATION LOCK
130F	D5	14'-0"	14'-0"	STL		STL	No	No	14/A-612	13/A-612	14/A-612		22.0	LEVEL 'D' IMPACT RESISTANT OVERHEAD SECTIONAL DOORS
130G	D5	14'-0"	14'-0"	STL		STL	No	No	14/A-612	13/A-612	14/A-612		22.0	LEVEL 'D' IMPACT RESISTANT OVERHEAD SECTIONAL DOORS
131	D1	7'-0"	3'-0"	HM		HM	No	Yes	2/A-611	7/A-611	13/A-611	45 min	21.0	
131A	D1	7'-0"	3'-0"	HM		HM	Yes	Yes	4/A-612	8/A-612	7/A-612		3.0	
132	D1	7'-0"	3'-0"	HM		HM	No	Yes	2/A-611	7/A-611	13/A-611		14.0	
133	D1	7'-0"	3'-0"	HM		HM	No	Yes	2/A-611	7/A-611	13/A-611		13.0	
134	D2	7'-0"	3'-0"	HM		HM	No	Yes	2/A-611	7/A-611	13/A-611		17.0	VIEW LITE
135	D1	7'-0"	3'-0"	HM		HM	No	Yes	4/A-611	9/A-611	13/A-611		12.0	
136	D1	7'-0"	3'-0"	HM		HM	No	Yes	4/A-611	9/A-611	13/A-611		15.0	
137	D2	7'-0"	4'-0"	HM		HM	No	Yes	7/A-611		13/A-611		16.0	VIEW LITE
137A	D1	7'-0"	3'-0"	HM		HM	No	Yes	4/A-612	7/A-611	13/A-611		3.0	VIEW LITE
139	D2	7'-0"	4'-0"	SC		HM	No	Yes	9/A-611		13/A-611		16.0	VIEW LITE
140	D2	7'-0"	3'-0"	SC		HM	No	Yes	2/A-611	7/A-611	13/A-611		13.0	VIEW LITE
141	DBL G7	6'-0"	10'-8"	STL		STL							24.0	DOUBLE DUMPSTER GATES
142	DBL G7	6'-0"	10'-8"	STL		STL							24.0	DOUBLE DUMPSTER GATES
143	SGL G7	6'-0"	4'-0"	STL		STL							24.0	METAL GATE IN PERIMETER WALL
144	SGL G7	6'-0"	4'-0"	STL		STL							24.0	METAL GATE IN PERIMETER WALL
145	SGL SG8	6'-0"	15'-0"	ALUM		ALUM							24.0	SLIDING GATE, REFER TO MANUFACTURER - SECURED STAFF ENTRY
146	SGL SG8	6'-0"	15'-0"	ALUM		ALUM							24.0	SLIDING GATE, REFER TO MANUFACTURER - SECURED STAFF ENTRY



SG 8



DOOR ELEVATIONS - TYPES

GENERAL NOTES

- REFER TO FINISH SCHEDULE FOR ALL FINISH MATERIAL AND FINISH LOCATIONS
- ALL SURFACES EXPOSED TO VIEW ARE TO BE PAINTED PER SPECIFICATIONS DIVISION 9
- HOLLOW METAL FRAMES IN CMU/ CONCRETE WALLS TO BE BITUMINOUS BACK COATED AND GROUT FILLED. PROVIDE CONDUIT RACEWAYS FOR ELECTRONIC WIRING PRIOR TO FRAME GROUING. PROVIDE ADDITIONAL STIFFENING / SUPPORT AS RECOMMENDED BY THE DOOR / FRAME MANUFACTURER.

DOOR SCHEDULE ABBREVIATIONS

AL = ALUMINUM
 DBL = DOUBLE DOORS
 DPS = DOOR POSITION SWITCH
 HM = HOLLOW METAL DOOR/ OR FRAME
 X = INDICATES LABEL, CLOSER OR ELECT. LOCK IS INCLUDED
 N/A = NOT APPLICABLE
 STL = GALVANIZED STEEL
 SC = SOLID CORE WOOD DOOR
 CR = ACCESS CONTROL CARD READER
 GL = GLAZING
 G = GATE
 SG = SLIDE GATE
 STC = SOUND TRANSMITTING COEFFICIENT

GLAZING MATERIAL TYPES

A. FLOAT OR PLATE GLASS; CLEAR; GLAZING QUALITY; 1/4" THICK MINIMUM.
 B. SAFETY GLASS; CLEAR, FULLY TEMPERED; 1/4" THICK MINIMUM.
 C. LOW E, LAMINATED / INSULATED, IMPACT LEVEL "D" GLAZING.
 D. 1 HR FIRE-RATED GLAZING MATERIAL; 1/4" THICK MINIMUM.
 E. MIRROR, POLISHED FLOAT GLASS; 1/4" THICK MINIMUM, EDGES SEALED AND SEALED WITH "MIRROR EDGE SEALER"

DOOR SCHEDULE NOTES

- ALL DOORS TO BE 1 3/4" UNLESS NOTED OTHERWISE
- FIELD VERIFY ALL DIMENSIONS
- DOOR AND FRAME FIRE RATING IS AS FOLLOWS: 3/4" HOUR C LABEL
- REFER TO SPECIFICATIONS SECTION 08800 FOR GLAZING TYPES AND MATERIALS
- ALL DOORS IN MASONRY OPENINGS SHALL MATCH BLOCK COURSING. FIELD VERIFY ALL DIMENSIONS
- FIRE RATED GLAZING SHALL NOT BE WIRED GLASS.
- ALL INTERIOR DOORS SHALL BE SOLID CORE OR HOLLOW METAL. SEE DOOR SCHEDULE.
- CARD READERS: SEE TECHNOLOGY SHEETS FOR EXACT CARD READER LOCATIONS.
- PROVIDE PANIC HARDWARE. SEE SPECS, DOOR HARDWARE SECTION 8.71.00.
- PROVIDE DOOR CLOSURE & LATCHING MECHANISM.
- INSULATED METAL SECTIONAL DOOR
- ALL EXTERIOR DOORS TO HAVE COMBINATION LOCK.

Architects and Planners
 I.S.K. Reeves, V, F.A.I.A.
 Ian A. Reeves, A.I.A.
 Susan Gantt, A.I.A., LEED-AP

333 N. Knowles Ave.
 Winter Park, Florida 32789
 P: (407) 647-1706

Corporate Registration
 Number: AAC001197

**ORANGE COUNTY
 FIRE STATION
 87**

**ORANGE COUNTY
 FIRE RESCUE**

BID & PERMIT SET

The architect hereby expressly reserves his common law copyright and other property rights in these drawings. These drawings shall not be reproduced without written permission and consent of the architect, nor are they to be assigned to any party without first obtaining written permission and consent.

Number	Description	Date Issued
2	Addendum 2	9/6/19

• sheet title
**DOOR
 SCHEDULE**

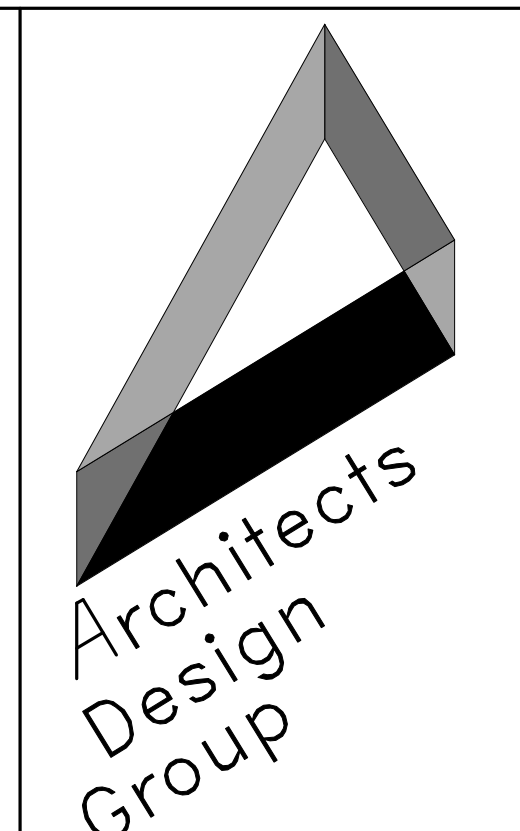
• scale: 3/8" = 1'-0"
 • drawn: IW
 • checked: LG
 • approved: FR
 • date: 06/12/2019

• project no.
963
 • sheet number:
A-601

INTERIOR FINISH LEGEND						
FINISH TAG	MATERIAL / FINISH	MANUFACTURER	STYLE	COLOR / FINISH	SIZE	COMMENTS
033543	Sealed Concrete					
SC-1	Sealed Concrete	L.M. Scofield Co.	Grade 1 / Class 2	Clear	N/A	All Elec, Telecom, and Mech rooms
STSC-1	Dyed & Polished Concrete	L.M. Scofield Co.	Formula One Liquid Dye	Black	N/A	Apparatus Bay #130, Turnout Gear #132, SCBA #133, Ice #134, Storage #135, Corridor #137, Jan #138, Decon #139, and Laundry #140
STSC-2	Dyed & Polished Concrete	L.M. Scofield Co.	Formula One Liquid Dye	Black	N/A	Air Locks #119 and #128
06067	Plastic Surfacing					
SSP-1	Solid Surface Paneling	Swanstone	12-inch Square Tile Panels pattern	Mountain Haze (129)	Varies - Verify in Field	Class I Fire Rating; Corner Molding #CM-2096 at inside corners
064116	High Pressure Plastic Laminate					
PL-1	Plastic Laminate	Formica	White Twill	9285-58, Matte Finish	N/A	See elevations for exact locations.
PL-2	Plastic Laminate	Formica	Citadel Warp	5882-58, Matte Finish	N/A	See elevations for exact locations.
PL-3	Plastic Laminate	Pionite	Moonlighting Papel	AV971 SD, Textured/Suede Finish	N/A	"Dry" countertops. See elevations for exact locations.
PL-4	Plastic Laminate	Wilsonart	Charcoal Velvet	Traceless Finish	N/A	See elevations for exact locations.
064020	Stainless Steel					
SS-1	Stainless Steel	Refer to specs				See elevations for exact locations.
081416	Flush Interior Doors					
DR-1	Wood-grained High-Pressure Plastic Laminate	VT Industries / Nevamar	Pennylane A17500-SD	Textured/Suede Finish	N/A	All Interior Wood Doors UNO; Refer to Door Schedule
093013	Porcelain Tile					
PTF-1	Porcelain Tile - Floor	DalTile	Chord	Rhythm Brown CH23, Light Polished	12" x 24"	Install 1/3 Stacked. Refer to finish plan for pattern direction; 1/8" Grout Joint; Custom Building Products, #185 New Taupe
PTF-2	Porcelain Tile Plank - Floor	Landmark Ceramics / dist. by CeramicTechnics	Nashville	Chestnut	8" x 40"	Install in random linear pattern with maximum 33% stagger, to mimic actual hardwood flooring installation. 1/8" Grout Joint; Custom Building Products #60 Charcoal
PTF-3	Porcelain Mosaic Tile - Floor	DalTile	Keystones	Uptown Taupe Speckle D202	2" x 2"	1/8" Grout Joint; Custom Building Products #370 Dove Gray
PTW-1	Porcelain Tile - Wall	Trinity Tile	Muse	Pitch, Matte	12" x 24"	Install Vertical Stacked. Refer to elevations for locations; 1/8" Grout Joint; Custom Building Products #333 Alabaster
PTW-2	Porcelain Tile - Wall Accent (Kitchen Backsplash)	Somer Tile / dist by DalTile	Projectos	Vermelho, Matte	3 7/8" x 7 3/4"	Install in Brick Pattern, with Schluter edge trim RONDEC-DB-14-AE to finish / protect exposed edges. Refer to elevations for locations. 1/8" Grout Joint; Custom Building Products #60 Charcoal
PTW-3	Stainless Steel over Porcelain Mosaic Tile - Wall Accent (Restrooms)	Somer Tile / dist. by DalTile	Subway	Alloy	12" x 24"	Cut and use individual rows: one continuous row above & adjacent to the accent row of GM-1 Tile, and one continuous row below & adjacent to the same accent row of GM-1 Tile. Refer to elevations for locations. 1/8" grout joint; Custom Building Products #19 Pewter
PTW-4	Porcelain Tile - Wall	Trinity Tile	Muse	Motion, Matte	3" x 12"	1/8" Grout Joint; Custom Building Products #135 Mushroom
PTB-1	Porcelain Tile - Base	DalTile	Chord	Rhythm Brown CH23, Light Polished	6" x 12"	Install with Schluter cove profile DILEX-AHK- 1S-125-AE in restrooms only. 1/8" Grout Joint, Custom BP #185 New Taupe
PTB-2	Porcelain Tile - Base	Landmark Ceramics / dist. by CeramicTechnics	Vision	Dark	6" x 12"	1/8" Grout Joint; Custom Building Products #60 Charcoal
093023	Glass Mosaic Tile					
GM-1	Glass Mosaic Tile - Wall Accent (Restrooms)	Somer Tile / dist. by DalTile	Tessera Magic	Carnelian	11 3/4" wide x 1 3/4"	Cut and use the rows of the largest tile; deliver the rest to the owner for their use. To be bordered with PTW-3 Tile. Refer to Elevations for locations. 1/8" Grout Joint; Custom Building Products #333 Alabaster
093030	Ceramic Tile					
CTW-1	Ceramic Tile - Wall Accent (Kitchen Backsplash)	Somer Tile / dist. by DalTile	Projectos	Vermelho, Matte	3 7/8" x 7 3/4"	Install Horizontal Stacked. Install with cap Schuler RONDEC-DV-14-AE on exposed ends; 1/8" Grout Joint, Custom Bldg. Products #60 Charcoal
CTW-2	Ceramic Tile Trim - Wall Accent	DalTile	SemiGloss	Elemental Tan 6466	2" X 6"	To finish exposed edges of SSP-1 shower wall panels; 1/8" Grout Joint; Custom Building Products, #135 Mushroom.
095123	Acoustical Panel Ceilings					
ACT-1	Acoustical Ceiling Tile	Rockfon	Alaska, High NRC, Narrow Square Tegular Edge, Fine Texture, 9/16" Suspension Grid	White	24" x 24" x 3/4"	Typical suspended acoustical ceiling system UNO; NRC 0.90; CAC 22; AC 180, Fire Class A, Light Reflectance 0.86
ACT-2	Acoustical Ceiling Tile Vinyl	Rockfon	Koral; Item Number 1100, Square Lay-In Grid	White	24" x 24" x 3/4"	Typical suspended acoustical ceiling system UNO; NRC 0.85; CAC 20; AC 170, Fire Class A, Light Reflectance 0.86
096513	Resilient Wall Base					
RWB-1	Resilient Rubber Base 4"	Johnsonite	Rubber Base	82 Black Pearl 'B'	4"	4" cove base at rubber and concrete flooring
096500	Resilient Athletic Flooring					
RAF-1	Resilient Athletic Flooring	Ecore Commercial	EcoNights	Mission Possible 646	4' wide roll x 8mm thick	
096813	Carpet					
CPT-1	Walk-Off Carpet Tile	Shaw	Steppin Out Collection, Welcome II - 5T031	31557 Sterling	24" x 24" tiles	100% Solution-Dyed, Pet Polyester Fiber, EcoWorx Tile Backing
099123	Paints and Special Coatings					
P-1	Interior Paint	Sherwin Williams	SW 7012 Creamy	Satin	N/A	General Wall Color
P-2	Interior Paint	Sherwin Williams	7015 Repose Gray	Satin	N/A	Accent Wall Color
P-3	Interior Paint	Sherwin Williams	7017 Dorian Gray	Satin	N/A	Accent Wall Color
P-4	Interior Paint	Sherwin Williams	SW6868 Real Red	Satin	N/A	Accent Wall Color
P-5	Interior Paint	Sherwin Williams	SW 7007 Ceiling Bright White	Flat	N/A	Ceiling Paint
P-6	Interior Paint	Sherwin Williams	SW 7015 Repose Gray	Semi-Gloss	N/A	Upper Walls in Apparatus Bay
P-7	Interior Paint	Sherwin Williams	SW 7017 Dorian Gray	Semi-Gloss	N/A	Lower Walls in Apparatus Bay
P-8	Interior Paint	Sherwin Williams	SW 6868 Real Red	Semi-Gloss	N/A	Accent Wall Color
PM-1	Interior Paint	Sherwin Williams	SW 7015 Repose Gray	Flat	N/A	Exposed Structure
PM-2	Interior Paint	Sherwin Williams	SW 7018 Dovetail	Semi-Gloss	N/A	Interior HM Doors and Door Frames
102232	Operable Partition Wall					
OPW-1	Partition Wall Surfaces	Hufcor	Standard Vinyl, Cairn Pattern	Gray Flannel 44-306		Standard Trim, Gray
102600	Wall Protection					
CG-1	Corner Guard	Nystrom	Stainless Steel 1" Wing	Satin #4		Refer to specifications, All corridor corner loctions.
122413	Roller Shades					
RS-1	Single Roller Shades	Mechoshades / Mecho/5	Single Shade, Manual, ThermoVeil Dense Basketweave 1300 Series 5% Open	Shade: 1320 Shadow Grey	Varies - See Equip. Plan	Windows to receive shades are noted on Equipment Plan. Field verify.
RS-2	Dual Roller Shade with Blackout	Mechoshades / Mecho/5	Double Shade, Manual, Front Shade - ThermoVeil Dense Basketweave 1300 Series 5% Open; Black-Out Shade - Midnite 0200 Series Opaque	Front Shade: 1320 Shadow Grey, Black-Out Shade: 0211 Slate	See Equipment Plan	Window in Dining #110 to receive dual shade, including black-out shade

BID ALTERNATES

BID ALTERNATE DEDUCT #3 - REPLACE THE STAINLESS STEEL CABINETS AND COUNTERTOPS WITH WOOD CABINETS AND LAMINATE COUNTERTOPS.



Architects and Planners
 I.S.K. Reeves V, F.A.I.A.
 Ian A. Reeves, A.I.A.
 Susan Gantt, A.I.A., LEED-AP

333 N. Knowles Ave.
 Winter Park, Florida 32789
 P: (407) 647-1706

Corporate Registration
 Number: AAC001197

**ORANGE COUNTY
 FIRE STATION
 87**

**ORANGE COUNTY
 FIRE RESCUE**

BID & PERMIT SET

The architect hereby expressly reserves his common law copyright and other property rights in these drawings. These drawings shall not be reproduced without written permission and consent of the architect, nor are they to be assigned to any party without first obtaining written permission and consent.

revisions/addenda		
Number	Description	Date Issued
2	Addendum 2	9/6/19

• sheet title
**INTERIOR
 FINISH LEGEND**

- scale: 12" = 1'-0"
- drawn: LG
- checked: RM
- approved: RM
- date: 06/12/2019

• project no.
963

• sheet number:
ID-401