

























Client Name:  
**ORANGE COUNTY**

MANUFACTURER: SQ. D.		MAIN OPTIONS REQUIRED		PANEL NAME: E	
TYPE: NOOD		MCB: AMPS		LOCATION: ELEC RM	
AIC RATING: 10 K AMPS		MLC: 125 AMPS		MOUNTING: SURFACE	
VOLTS L-L: 120 V		S E RATED: N/A		NEMA TYPE: 1	
VOLTS L-L: 208 V		GFI PROT: NO		WIDTH: 20.00 IN	
PHASE: 3		SHUNT TRIP: N/A		DEPTH: 5.75 IN	

NOTES CKT NO.	IDENTIFICATION	LOAD/PHASE (KVA)	CIRCUIT BREAKER			LOAD/PHASE (KVA)			IDENTIFICATION	NOTES CKT NO.					
			A	B	C	TRIP	P	P			TRIP	A	B	C	
1	BATTERY CHARGER	E 1.20				20	1	2	20	1.00				2	
3	GFCI	R 0.18				20	1	1		1.00				4	
5	GENERATOR POLE LIGHT	L			0.20	20	1	1	20					6	
7	SPACE	S				20	1	1	20					8	
9	SPACE	S				20	1	1	20					10	
11	SPACE	S				20	1	1	20					12	
13	SPACE	S				20	1	1	20					14	
15	SPACE	S												16	
17	SPACE	S												18	
19	SPACE	S												20	
21	SPACE	S												22	
23	SPACE	S												24	
25	SPACE	S												26	
27	SPACE	S												28	
29	SPACE	S												30	

SUB FEED LUGS AS INDICATED, IF BLANK (NOT USED)

1.2	0.2	0.2	1.0	1.0	0.0
-----	-----	-----	-----	-----	-----

CONN. LOAD (KVA)	DEMAND FACTOR	DEMAND LOAD (KVA)
LIGHTING (L)	0.20	1.25
RECEPTACLES OVER 10KVA(R)	0.18	1.00
RECEPTACLES 1ST 10 KVA(R)	0.00	0.50
HVAC EQUIPMENT (H)	0.00	1.00
APPLIANCES (A)	0.00	1.00
EQUIPMENT (E)	3.20	1.00
LARGEST MOTOR (M)	0.00	1.25
OTHER (O)	0.00	1.00
SPARE (S)	0.00	1.00
LINKED PANEL (P)	INCLUDED ABOVE TOTALS	

TOTAL CONNECTED KVA:	3.58
TOTAL CONNECTED AMPS/PH:	10
TOTAL DEMAND KVA:	3.63
TOTAL DEMAND AMPS/PH:	10

GENERAL NOTES:  
a. PROVIDE ARC FLASH LABELING FOR THE PANEL IN ACCORDANCE WITH NFPA 70 & 70E

SCHEDULE NOTES:

**EQUIPMENT FEEDER SCHEDULE:** \* WIRE SIZES ARE BASED ON NFPA 70 TABLE 310.15(B)(16) 60 DEGREE COLUMN FOR SIZES OF 100A OR LESS. ALL OTHERS BASED ON 75 DEGREE COLUMN. \*\*DISTANCE SHOWN FOR VOLTAGE DROP CALCULATION ONLY. ACTUAL DISTANCE MAY VARY DEPENDENT ON ROUTING.

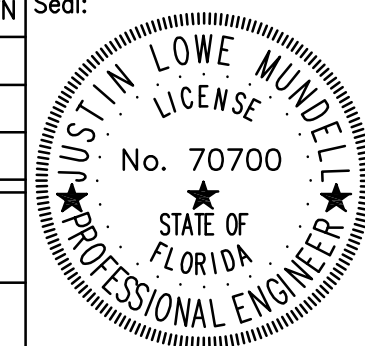
EQUIPMENT DESCRIPTION	VOLTS	PH	NEUT	MOTOR (LARGEST)	ADDITIONAL MOTORS	HEAT STRIPS	MISC TOTALS	DISCONNECT	STARTER	WIRE	NEUT	GRD	#	CONDUIT APPROX	VOLT	DIST**	DROP	NOTES	
				HP	FLA	HP	FLA	KW	AMPS	SIZE	SIZE	SIZE	TYRE PHASE	RUNS	FT	VD%			
POLE LIGHT	120	1	Y			0.2	1.7		1.7	20			#12	#12	1	3'	100	0.56%	
BLOCK HEATER	208	1	Y			2.0	9.6		9.6	20			#12	#12	1	3'	100	1.85%	
BATTERY CHARGER	120	1	Y					10.0	10.0	20			#10	#10	1	3'	100	2.00%	

Issue:

No.	Date	Description
01/25/19		100% BID/PERMIT SET

Project Name:  
**ORANGE COUNTY HEALTH SERVICES BACKUP GENERATOR**

Project Number: 2018-249  
Drawing File Name: 1800-E701-2018249.DWG  
Scale: AS SHOWN  
Design By: BSB  
Drawn By: JLM  
Checked By: BSB  
Engineer of Record: JUSTIN L. MUNDELL  
License Number: FL70700



Sheet Name:  
**ELECTRICAL SCHEDULES**

Sheet Number:  
**E-701**

FILE: O:\PROJECT FILES\2018\2018-249\_OC\_HEALTH\_SERVICES\_GENERATOR\_DRAWINGS\1800-E701-2018249.DWG PRINTED: 03/26/2019 LAST SAVED BY: JUSTIN





