



# INTERNAL OPERATIONS CENTER II - ELEVATOR MODERNIZATION

400 EAST SOUTH STREET  
ORLANDO, FL 32801

## PROJECT SCOPE

ELEVATOR MODERNIZATION AND ASSOCIATED ELECTRICAL  
WORK

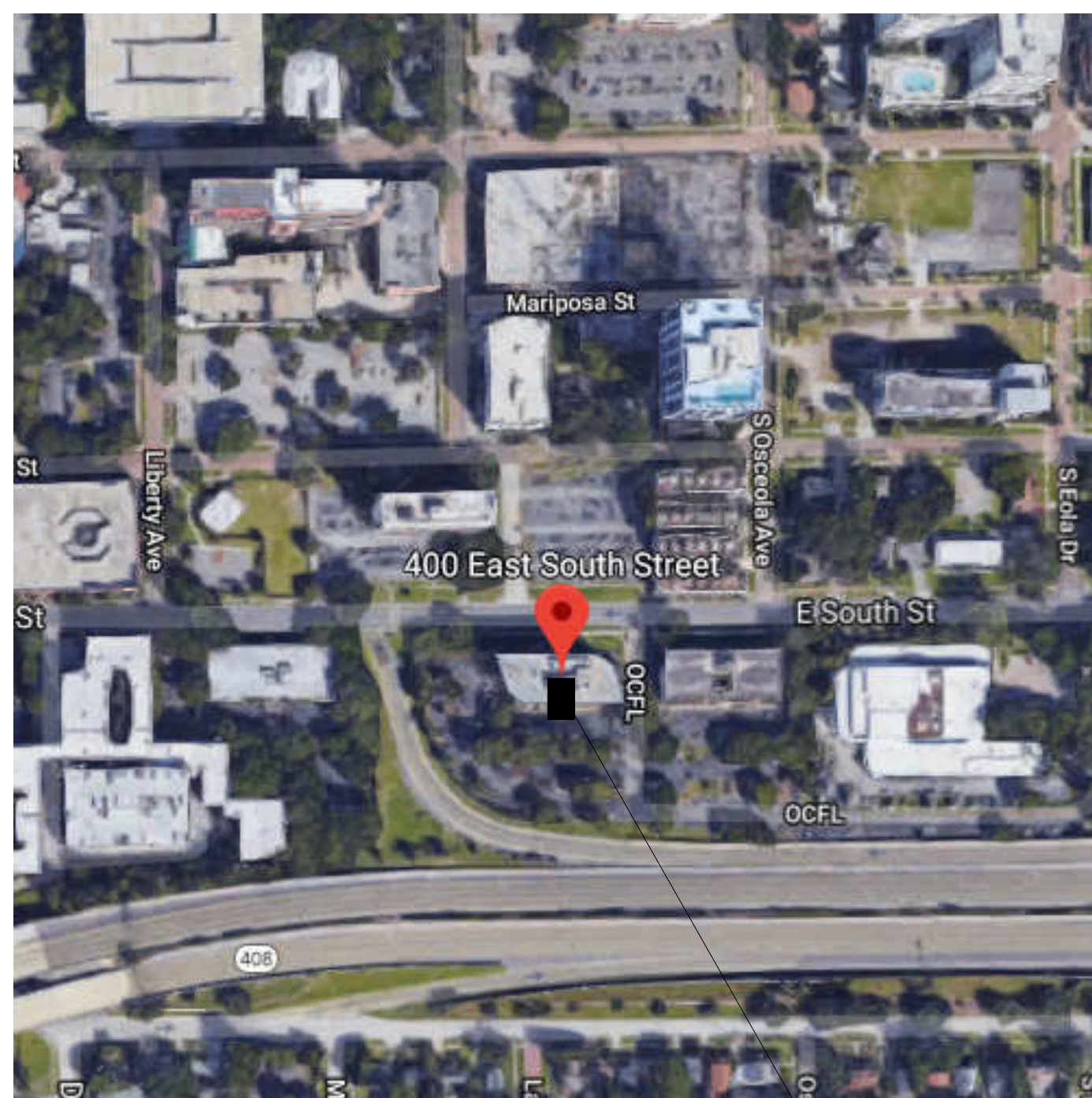
## CONSTRUCTION DOCUMENTS

June 19, 2018

### Orange County Government

400 East South Street, Suite 500  
Orlando, FL 32801

## VICINITY MAP

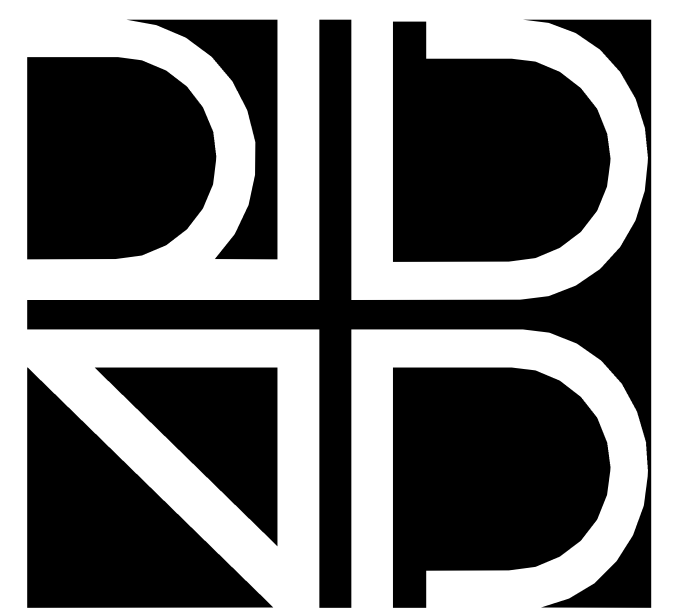


PROJECT LOCATION

### BOARD OF COUNTY COMMISSIONERS

TERESA JACOBS  
COUNTY MAYOR

BETSY VANDERLEY District 1 Commissioner	JENNIFER THOMPSON District 4 Commissioner
BRYAN NELSON District 2 Commissioner	EMILY BONILLA District 5 Commissioner
PETE CLARKE District 3 Commissioner	VICTORIA P. SIPLIN District 6 Commissioner



rhodes + brito  
ARCHITECTS  
AA0002809

## PROJECT DESIGN TEAM

DATE | SUBMISSION / REVISION | NO.

### ELEVATOR

LERCH-BATES  
3802 EHRlich ROAD, SUITE 304  
TAMPA, FL 33624  
PH: (813) 810.9339  
CONTACT: MICHAEL LAGANA

### M.E.P. ARCHITECTURE

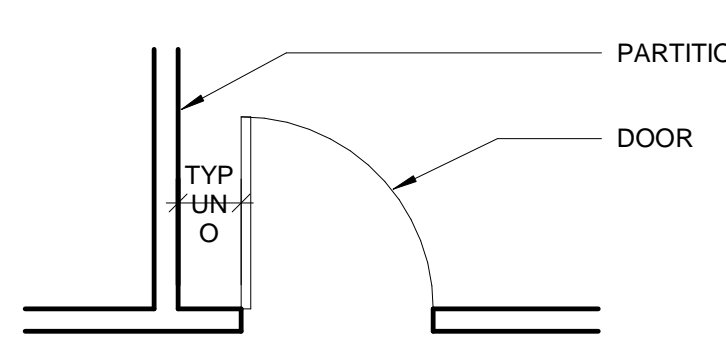
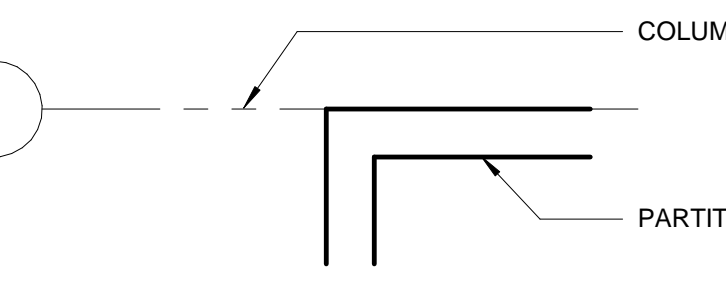
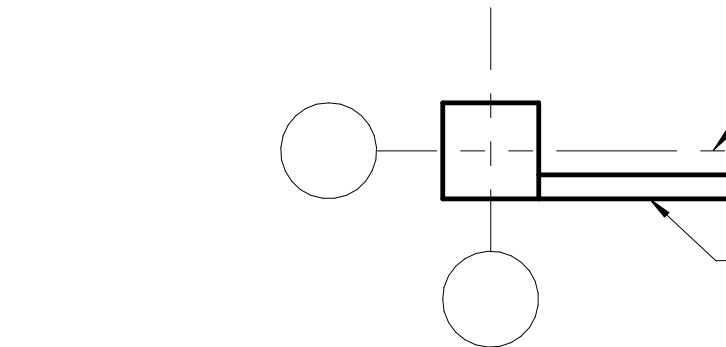
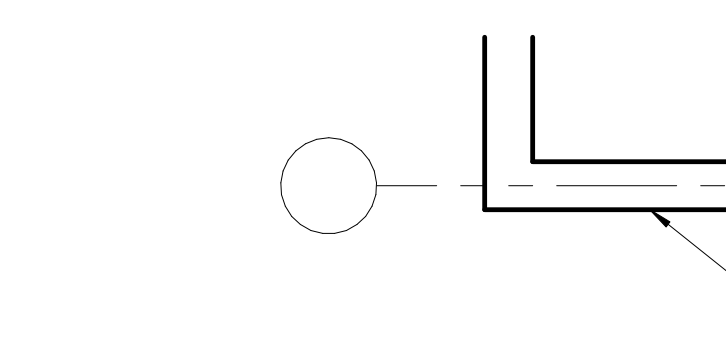
C&S ENGINEERS, INC.  
605 E. ROBINSON STREET, SUITE  
210  
ORLANDO, FL 32801  
PH: (407) 422.1118  
CONTACT: TRAVIS COMERS, P.E.

### ARCHITECTURE

RHODES+BRITO ARCHITECTS,  
INC  
605 E. ROBINSON ST, SUITE 750  
ORLANDO, FL 32801  
PH: (407) 648-7288  
CONTACT: ADEL SHALABY



**DIMENSIONING**

- WHEN A ROOM/BUILDING/OBJECT CENTERLINE IS INDICATED, ONLY ONE SIDE OF ELEMENT MAY BE DIMENSIONED
- DOOR LOCATION  
DOORS ARE LOCATED BY ONE OF THE FOLLOWING:  
A. ONE JAMB FACE LOCATED BY A PARTITION AT RIGHT ANGLE.  
  
B. AS DIMENSIONED
- PARTITION FINISH FACE ON COLUMN OR GRID LINE WILL NOT BE DIMENSIONED ON SMALL SCALE PLANS BUT WILL BE DRAWN ACCORDINGLY ON LARGER SCALE DRAWINGS.  

- PARTITIONS WITH FINISH FACE FLUSH WITH FINISH FACE OF COLUMN WILL NOT BE DRAWN ON SMALL SCALE PLANS BUT WILL BE DRAWN ACCORDINGLY ON LARGER SCALE DRAWINGS.  

- PARTITIONS CENTERED ON COLUMNS OR GRID LINES WILL NOT BE DIMENSIONED ON SMALL SCALE PLANS BUT WILL BE DRAWN ACCORDINGLY ON LARGER SCALE DRAWINGS.  

- PARTITIONS ARE DIMENSIONED TO FACE OF STUDS, FACE OF CMU AND FACE OF BLOCK UNLESS INDICATED OTHERWISE
- DIMENSIONS ARE INDICATED ON DRAWINGS, DO NOT SCALE DRAWINGS

**DRAWING SYMBOL LEGEND**

**DRAWING SHEET NUMBERS**

DISCIPLINE: C - Civil, S - Structural, A - Architectural, M - Mechanical (HVAC), P - Plumbing, E - Electrical, L - Landscape

CATEGORY: A711A

SUBCATEGORY: A711

SHEET NUMBER: A711A

ITEM: A711A

**ROOM SPACE IDENTIFICATION NOTATION**

ROOM NAME: A101

NUMBER: 100

BUILDING AREA: A101

SECTION ORIENTATION: A2

SECTION NUMBER: A711

DRAWING ON WHICH SECTION OCCURS: TYP

ELEVATION ORIENTATION: A2

ELEVATION NUMBER: A711

DRAWING ON WHICH ELEVATION OCCURS: TYP

PROJECT NORTH ARROW

TRUE NORTH ARROW

SPOT ELEVATION REFERENCE: 19.02

ACCESSORY IDENTIFICATION: A7

ACCESSORY TYPE (REFER TO ACCESSORY SCHEDULE)

DOOR NUMBER: A101

DOOR NUMBER (SEE DOOR SCHEDULE)

KEYNOTE REFERENCE: 3

REFERENCE NUMBER

WINDOW TYPE: A7

WINDOW DESIGNATION (REFER TO WINDOW SCHEDULE)

PARTITION TYPE IDENTIFICATION: A7

PARTITION TYPE (REFER TO PARTITION TYPE DETAILS)

REVISION IDENTIFICATION: A7

REVISION NUMBER (REFER TO TITLE BLOCK)

ELEVATION REFERENCE: 100'-0"

TARGET ELEVATION: FIN FLOOR

TARGET DESCRIPTION

SPACE IDENTIFICATION: OFFICE

SPACE NAME: 135

SPACE NUMBER: (123)

NET ROOM AREA (SF)

REVISION SYMBOLS

REVISION NUMBER: 1

REVISION AREA

DETAIL REFERENCE: H6, A3.11

DETAIL NUMBER: H6

DRAWING ON WHICH DETAIL OCCURS: A3.11

EXISTING COLUMN IDENTIFICATION: B

COLUMN IDENTIFICATION: B

COLUMN CENTERLINE

MULTIPLE INTERIOR ELEVATION REFERENCE: W, H7, 45.00, E, S

ELEVATION ORIENTATION ON PLANS

MULTIPLE ELEVATION NUMBER

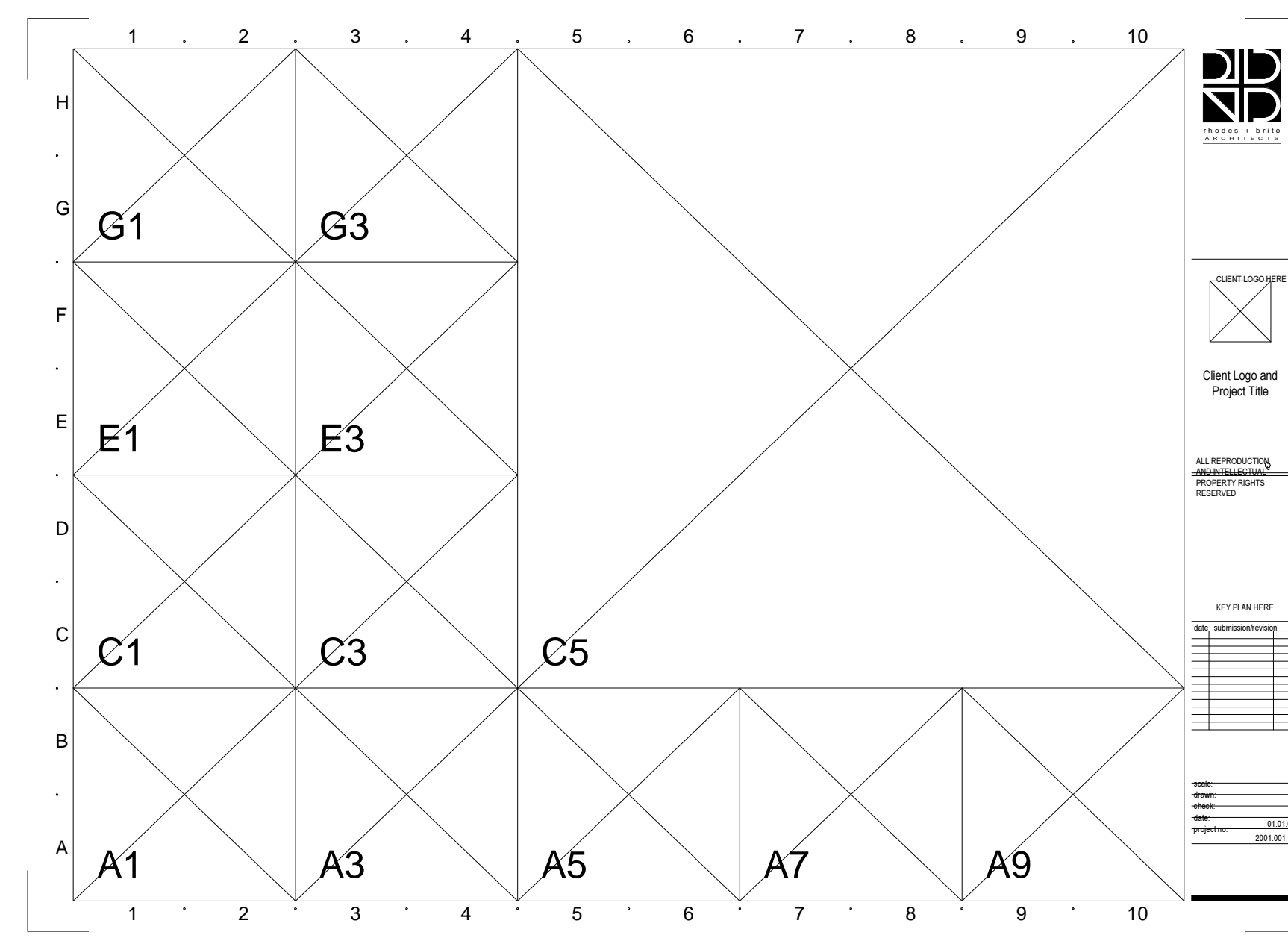
DRAWING ON WHICH ELEVATION OCCURS

GRAPHIC SCALE: 0, 8, 20 INDICATES FEET

**MATERIALS LEGEND**

	EARTH		DISCONTINUOUS ROUGH LUMBER
	CONCRETE		CONTINUOUS ROUGH LUMBER
	FINISH LUMBER		CONCRETE MASONRY UNITS
	PLYWOOD (OR GLULAM)		RIGID INSULATION
	STEEL		GYPSUM BOARD / GROUT FILL
	BATT INSULATION		POROUS FILL

**DRAWING FORMAT**



EACH SHEET IS DIVIDED INTO A GRID. AN ALPHA-NUMERIC GRID COORDINATE SYSTEM IS USED TO ORGANIZE THE DRAWING TITLES. DRAWING TITLES ARE NUMBERED ACCORDING TO ITS LOCATION ON THE GRID. THE LOWER LEFT HAND CORNER GRID OF THE DRAWING IS USED AS THE IDENTIFICATION NUMBER (SEE DIAGRAM).

**LIST OF ABBREVIATIONS**

AB ANCHOR BOLT	CAB CABINET	DBL DEMO	DOUBL DOUBLE DEMOLITION	FA FIRE ALARM	HB HOSE BIBB	LAB LABORATORY	N NORTH	QT QUARRY TILE	S SOUTH	TPD TOILET PAPER DISPENSER
ABV ABOVE	CAT CATEGORY	DEP DEPRESS	DEMOLISH DEMOLITION	FAS FASTEN FASTENER	HBD HARDBOARD	LAM LAMINATE	NA NOT APPLICABLE	QTR QUARTER	SC SCHED	TRF TRANSOM
AC AIR CONDITIONING	CB CAST BASIN	DEPT DEPARTMENT	DEP DEPRESS	FB FACE BRICK	HD HOLLOW CORE	LAV LAVATORY	NGVD NATIONAL GEODETIC	RA RIB	SD SCHEDULE	TV TELEVISION
ACC ACCESS	CC CENTER TO CENTER	DF DRINKING FOUNTAIN	DEMOLISH DEMOLITION	FCC FLOOR CLEAN OUT	HDR HEADER	LBL LABEL	NO NOT IN CONTRACT	RA RETURN AIR	SEC SECRETARY	TYP TYPICAL
ACPL ACoustical PLASTER	CG CORNER GUARD	FD FLOOR DRAIN	DEMOLISH DEMOLITION	FC FLOOR CLEAN OUT	HHT HEAD HEIGHT	LF LINEAR FOOT	NTS NOT TO SCALE	RAD RADIUS	SEC SECURITY	
AD AREA DRAIN	CHM CHAMFER	FE FIRE EXTINGUISHER	DEMOLISH DEMOLITION	FD FLOOR DRAIN	HMT HEAD METAL	LH LEFT HAND	OC ON CENTER	RDP REFLECTED CEILING PLAN	SEC SECURITY	
ADD ADDENDUM	CHT CEILING HEIGHT	FE FIRE EXTINGUISHER	DEMOLISH DEMOLITION	FD FLOOR DRAIN	HOR HORIZONTAL	LL LIVE LOAD	OD OUTSIDE DIAMETER	ROF ROOF DRAIN	SEC SECURITY	
ADJ ADJUSTABLE	CI CAST IRON	FF FACTORY FINISH	DEMOLISH DEMOLITION	FD FLOOR DRAIN	HPC HIGH POINT	LT LIGHT	OFF OFFICE	ROR ROOF OPENING	SEC SECURITY	
AIE ARCHITECT ENGINEER	CI CAST IRON	FF FACTORY FINISH	DEMOLISH DEMOLITION	FD FLOOR DRAIN	HPC HIGH POINT	LT LIGHT	OFF OFFICE	ROR ROOF OPENING	SEC SECURITY	
AF ABOVE FINISHED FLOOR	CL CALK	FF FINISHED FLOOR ELEVATION	DEMOLISH DEMOLITION	FD FLOOR DRAIN	HPC HIGH POINT	LT LIGHT	OFF OFFICE	ROR ROOF OPENING	SEC SECURITY	
AHU AUTHORITY HAVING JURISDICTION	CL CALK	FF FINISHED FLOOR ELEVATION	DEMOLISH DEMOLITION	FD FLOOR DRAIN	HPC HIGH POINT	LT LIGHT	OFF OFFICE	ROR ROOF OPENING	SEC SECURITY	
ALT ALTERNATE	CL CALK	FF FINISHED FLOOR ELEVATION	DEMOLISH DEMOLITION	FD FLOOR DRAIN	HPC HIGH POINT	LT LIGHT	OFF OFFICE	ROR ROOF OPENING	SEC SECURITY	
ALUM ALUMINUM	CL CALK	FF FINISHED FLOOR ELEVATION	DEMOLISH DEMOLITION	FD FLOOR DRAIN	HPC HIGH POINT	LT LIGHT	OFF OFFICE	ROR ROOF OPENING	SEC SECURITY	
ANCH ANCHOR	CL CALK	FF FINISHED FLOOR ELEVATION	DEMOLISH DEMOLITION	FD FLOOR DRAIN	HPC HIGH POINT	LT LIGHT	OFF OFFICE	ROR ROOF OPENING	SEC SECURITY	
AND AND	CL CALK	FF FINISHED FLOOR ELEVATION	DEMOLISH DEMOLITION	FD FLOOR DRAIN	HPC HIGH POINT	LT LIGHT	OFF OFFICE	ROR ROOF OPENING	SEC SECURITY	
APPROX APPROXIMATE	CL CALK	FF FINISHED FLOOR ELEVATION	DEMOLISH DEMOLITION	FD FLOOR DRAIN	HPC HIGH POINT	LT LIGHT	OFF OFFICE	ROR ROOF OPENING	SEC SECURITY	
ARCH ARCHITECTURAL	CL CALK	FF FINISHED FLOOR ELEVATION	DEMOLISH DEMOLITION	FD FLOOR DRAIN	HPC HIGH POINT	LT LIGHT	OFF OFFICE	ROR ROOF OPENING	SEC SECURITY	
ASB ASBESTOS	CL CALK	FF FINISHED FLOOR ELEVATION	DEMOLISH DEMOLITION	FD FLOOR DRAIN	HPC HIGH POINT	LT LIGHT	OFF OFFICE	ROR ROOF OPENING	SEC SECURITY	
AUTO AUTOMATIC	CL CALK	FF FINISHED FLOOR ELEVATION	DEMOLISH DEMOLITION	FD FLOOR DRAIN	HPC HIGH POINT	LT LIGHT	OFF OFFICE	ROR ROOF OPENING	SEC SECURITY	
AV AUDIO VISUAL	CL CALK	FF FINISHED FLOOR ELEVATION	DEMOLISH DEMOLITION	FD FLOOR DRAIN	HPC HIGH POINT	LT LIGHT	OFF OFFICE	ROR ROOF OPENING	SEC SECURITY	
BD BOARD	CL CALK	FF FINISHED FLOOR ELEVATION	DEMOLISH DEMOLITION	FD FLOOR DRAIN	HPC HIGH POINT	LT LIGHT	OFF OFFICE	ROR ROOF OPENING	SEC SECURITY	
BE BELOW	CL CALK	FF FINISHED FLOOR ELEVATION	DEMOLISH DEMOLITION	FD FLOOR DRAIN	HPC HIGH POINT	LT LIGHT	OFF OFFICE	ROR ROOF OPENING	SEC SECURITY	
BET BETWEEN	CL CALK	FF FINISHED FLOOR ELEVATION	DEMOLISH DEMOLITION	FD FLOOR DRAIN	HPC HIGH POINT	LT LIGHT	OFF OFFICE	ROR ROOF OPENING	SEC SECURITY	
BTG BITUMINOUS	CL CALK	FF FINISHED FLOOR ELEVATION	DEMOLISH DEMOLITION	FD FLOOR DRAIN	HPC HIGH POINT	LT LIGHT	OFF OFFICE	ROR ROOF OPENING	SEC SECURITY	
BU(B) BULB	CL CALK	FF FINISHED FLOOR ELEVATION	DEMOLISH DEMOLITION	FD FLOOR DRAIN	HPC HIGH POINT	LT LIGHT	OFF OFFICE	ROR ROOF OPENING	SEC SECURITY	
BU(B) BLOCKING	CL CALK	FF FINISHED FLOOR ELEVATION	DEMOLISH DEMOLITION	FD FLOOR DRAIN	HPC HIGH POINT	LT LIGHT	OFF OFFICE	ROR ROOF OPENING	SEC SECURITY	
BM BENCH MARK	CL CALK	FF FINISHED FLOOR ELEVATION	DEMOLISH DEMOLITION	FD FLOOR DRAIN	HPC HIGH POINT	LT LIGHT	OFF OFFICE	ROR ROOF OPENING	SEC SECURITY	
BO BOTTOM OF	CL CALK	FF FINISHED FLOOR ELEVATION	DEMOLISH DEMOLITION	FD FLOOR DRAIN	HPC HIGH POINT	LT LIGHT	OFF OFFICE	ROR ROOF OPENING	SEC SECURITY	
BT BOTTOM	CL CALK	FF FINISHED FLOOR ELEVATION	DEMOLISH DEMOLITION	FD FLOOR DRAIN	HPC HIGH POINT	LT LIGHT	OFF OFFICE	ROR ROOF OPENING	SEC SECURITY	
BRS BRASS	CL CALK	FF FINISHED FLOOR ELEVATION	DEMOLISH DEMOLITION	FD FLOOR DRAIN	HPC HIGH POINT	LT LIGHT	OFF OFFICE	ROR ROOF OPENING	SEC SECURITY	
BRS PL BEARING PLATE	CL CALK	FF FINISHED FLOOR ELEVATION	DEMOLISH DEMOLITION	FD FLOOR DRAIN	HPC HIGH POINT	LT LIGHT	OFF OFFICE	ROR ROOF OPENING	SEC SECURITY	
BRK BRICK	CL CALK	FF FINISHED FLOOR ELEVATION	DEMOLISH DEMOLITION	FD FLOOR DRAIN	HPC HIGH POINT	LT LIGHT	OFF OFFICE	ROR ROOF OPENING	SEC SECURITY	
BRS BRASS	CL CALK	FF FINISHED FLOOR ELEVATION	DEMOLISH DEMOLITION	FD FLOOR DRAIN	HPC HIGH POINT	LT LIGHT	OFF OFFICE	ROR ROOF OPENING	SEC SECURITY	
BTH BOTH SIZES	CL CALK	FF FINISHED FLOOR ELEVATION	DEMOLISH DEMOLITION	FD FLOOR DRAIN	HPC HIGH POINT	LT LIGHT	OFF OFFICE	ROR ROOF OPENING	SEC SECURITY	
BTL BUILDING SETBACK LINE	CL CALK	FF FINISHED FLOOR ELEVATION	DEMOLISH DEMOLITION	FD FLOOR DRAIN	HPC HIGH POINT	LT LIGHT	OFF OFFICE	ROR ROOF OPENING	SEC SECURITY	
BSM BASEMENT	CL CALK	FF FINISHED FLOOR ELEVATION	DEMOLISH DEMOLITION	FD FLOOR DRAIN	HPC HIGH POINT	LT LIGHT	OFF OFFICE	ROR ROOF OPENING	SEC SECURITY	
BUR BUILT UP ROOFING	CL CALK	FF FINISHED FLOOR ELEVATION	DEMOLISH DEMOLITION	FD FLOOR DRAIN	HPC HIGH POINT	LT LIGHT	OFF OFFICE	ROR ROOF OPENING	SEC SECURITY	
BVL BEVELED	CL CALK	FF FINISHED FLOOR ELEVATION	DEMOLISH DEMOLITION	FD FLOOR DRAIN	HPC HIGH POINT	LT LIGHT	OFF OFFICE	ROR ROOF OPENING	SEC SECURITY	
BW BOTH WAYS	CL CALK	FF FINISHED FLOOR ELEVATION	DEMOLISH DEMOLITION	FD FLOOR DRAIN	HPC HIGH POINT	LT LIGHT	OFF OFFICE	ROR ROOF OPENING	SEC SECURITY	

**DRAWING INDEX**

**GENERAL**

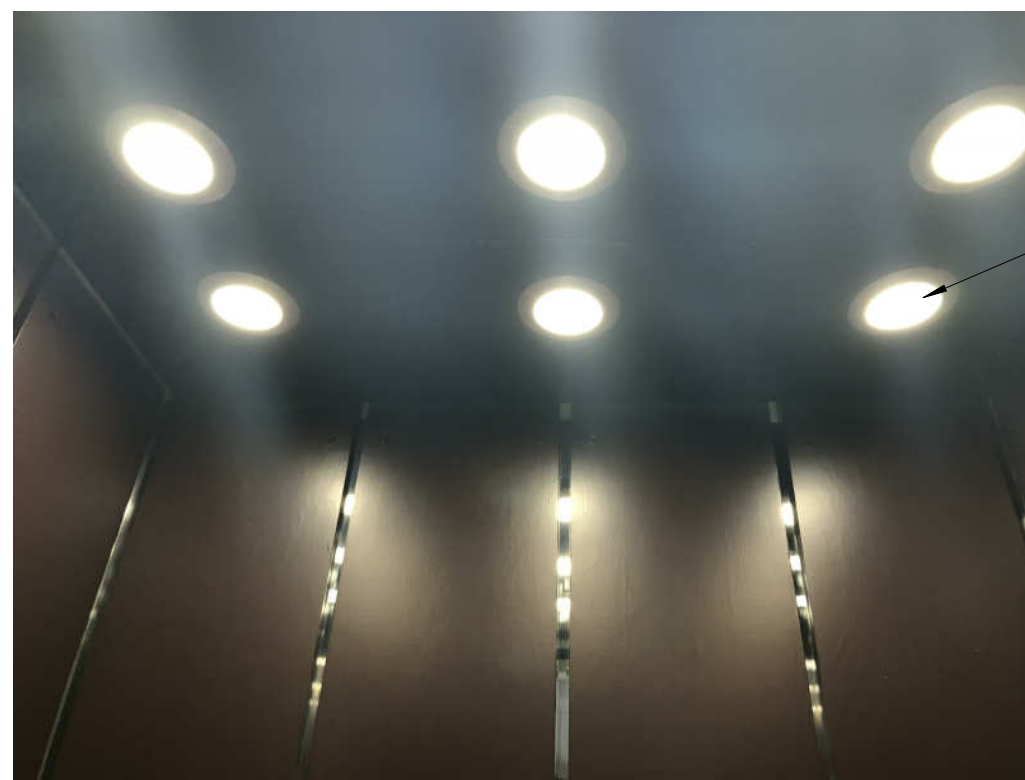
REV. NO.	SHEET NAME
G000	COVER SHEET
G001	GENERAL INFORMATION AND DRAWING INDEX
Grand total: 2	

**ELECTRICAL**

REV. NO.	SHEET NAME
E-100	General Notes, Legends and Electrical Plans
E-201	Electrical New Work Plan
ED-201	Electrical Demolition Plan
Grand total: 3	



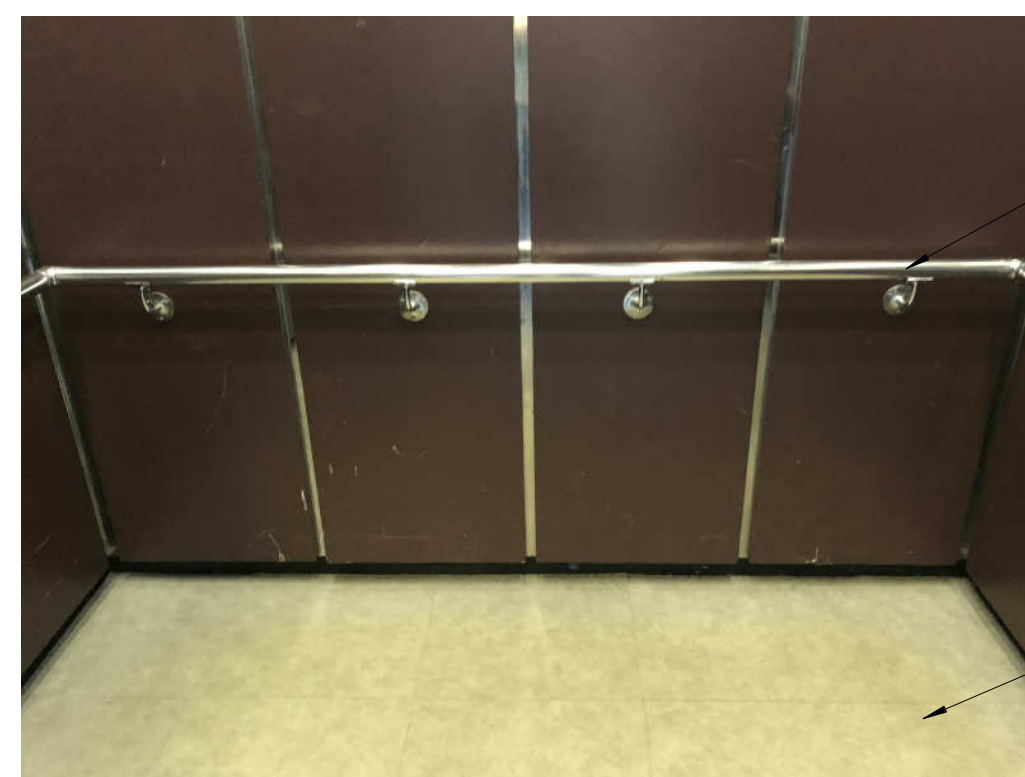
RETURN PANEL - RE-CLAD IN MIRROR STAINLESS AND PROVIDE OUT-OUTS FOR SIGNAL AND OPERATING FIXTURES. SEE SPECIFICATIONS FOR ADDITIONAL INFORMATION



CEILING - PROVIDE NEW LED DOWNLIGHTS. SEE SPECIFICATIONS FOR ADDITIONAL INFORMATION

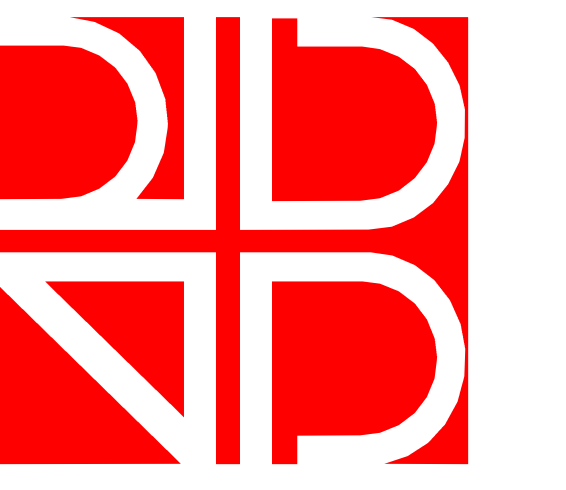


WALL PANELS - FLAT LAMINATE - STANDARD WILSONART - COLOR AND PATTERN TO BE SELECTED UPON SUBMITTAL. SEE SPECIFICATIONS FOR ADDITIONAL INFORMATION



HANDRAILS - AT REAR WALL - MIN. 1 1/4" DIA. STAINLESS STEEL - FLAT GRAB BAR WITH RETRURNED ENDS. PROVIDE STANDOFFS WITH THREADED SET PINS

FLOOR - EXISTING TO REMAIN



**rhodes + brito**  
ARCHITECTS  
AA0002809  
605 E. ROBINSON STREET, SUITE 750  
ORLANDO, FL 32801  
PH (407) 648-7288  
www.rhodesbrito.com

Consultants



CAPITAL PROJECTS DIVISION

Orange County Government

INTERNAL OPERATIONS CENTER II - ELEVATOR MODERNIZATION

400 E. South Street  
Orlando, FL 32801

ALL REPRODUCTION AND INTELLECTUAL PROPERTY RIGHTS RESERVED ©

Seal

CONSTRUCTION DOCUMENTS

DATE	SUBMISSION/REVISION	NO.
------	---------------------	-----

**GENERAL INFORMATION AND DRAWING INDEX**

SCALE: 12" = 1'-0"

DRAWN BY: CWS

CHECK BY: MS

DATE: June 19, 2018

PROJECT NUMBER: 15012.0029

**G001**

ELEVATOR CAB PHOTOS



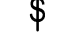
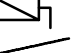





- AFF ABOVE FINISHED FLOOR
- AJ AT UNIT
- CT CURRENT TRANSFORMER
- DP DISTRIBUTION PANEL
- EMT ELECTRIC METALLIC TUBING
- EX EXISTING TO REMAIN
- FA FIRE ALARM
- FACP FIRE ALARM CONTROL PANEL
- GF GROUND FAULT INTERRUPTER TYPE
- GND GROUND
- JB JUNCTION BOX
- KA KILO AMP
- KV KILO VOLT
- KVA KILO VOLT AMP
- NEMA NATIONAL ELECTRICAL MANUFACTURERS ASSOCIATION
- PF POWER FEEDER
- REM REMARKS
- RSS RIGID GALVANIZED STEEL CONDUIT
- VFD VARIABLE FREQUENCY DRIVE
- WP WEATHER PROOF

**G1 ABBREVIATIONS**  
SCALE: NOT TO SCALE

1. ALL WORK SHALL COMPLY WITH NEC 2014.
2. ALL WORK SHALL COMPLY WITH FBC 2017.
3. ALL ELECTRICAL WORK SHALL CONFORM TO ALL STATE, LOCAL, AND NATIONAL ELECTRICAL CODES.
4. ELECTRICAL CHARACTERISTICS SHALL BE VERIFIED WITH EQUIPMENT MANUFACTURER.
5. ITEMS OF SPECIFIC MANUFACTURERS SHALL BE INSTALLED IN STRICT ACCORDANCE WITH MANUFACTURER'S PRINTED INSTRUCTIONS AND/OR MANUFACTURER'S REPRESENTATIVE'S DIRECTIONS.
6. THE CONTRACTOR SHALL FIELD VERIFY ALL LOCATIONS AND DIMENSIONS SHOWN ON DRAWINGS.
7. ALL CONDUIT AND WIRING SCHEDULES SHALL BE VERIFIED BEFORE INSTALLATION.
8. ALL AREAS DISTURBED BY WORK SHALL BE RESTORED TO A CONDITION EQUAL TO OR BETTER THAN ORIGINAL AS DETERMINED BY THE ENGINEER.
9. THE CONTRACTOR SHALL PROVIDE RACEWAYS, WIRING, AND CONNECTIONS FOR ALL CONTROL CIRCUITS AND INTERLOCK.
10. ALL ELECTRICAL CONDUIT AND CONDUCTORS DISCONNECTED AND NOT TO BE REUSED SHALL BE REMOVED.
11. CONTRACTOR SHALL FIELD VERIFY ALL EXISTING CONDITIONS BEFORE STARTING WORK. IF ONLY A PORTION OF AN EXISTING CIRCUIT IS BEING REMOVED FOR DEMOLITION, CONTINUITY SHALL BE MAINTAINED TO THE REST OF THE REMAINING CIRCUIT.
12. ALL NEW CIRCUIT BREAKERS SHALL BE RATED AND UL LISTED FOR USE IN EXISTING PANEL AND SHALL AT MINIMUM MATCH THE SHORT CIRCUIT RATING OF THE PANEL.
13. THESE PLANS ARE DIAGRAMMATIC AND ARE INTEND TO CLARIFY THE SCOPE OF WORK. PROVIDE ALL NECESSARY EQUIPMENT, ACCESSORIES, FITTINGS, TRANSITIONS, ETC. FOR A COMPLETE AND OPERATIONAL INSTALLATION AS PER THESE PLANS AND ANY SPECIFICATIONS. ALL WORK IS NEW UNLESS OTHERWISE NOTED.
14. COORDINATE ANY AND ALL WORK WITH OTHER TRADES PRIOR TO INSTALLATION IN ORDER TO AVOID CONFLICTS DURING CONSTRUCTION.
15. ALL DISCONNECTS SHALL HAVE A GROUND BAR. ALL DISCONNECTS SHALL BE CLEARLY LABELED WITH THE NAME AND LOCATION OF THE EQUIPMENT THAT THEY SERVE.
16. ALL ELECTRICAL EQUIPMENT SHALL BE INSTALLED SUCH THAT THERE IS SUFFICIENT CLEAR SPACE FOR MAINTENANCE. PROVIDE MINIMUM NEC WORKING CLEARANCE IN FRONT OF ALL PANELBOARDS, SWITCHES, ETC.
17. ALL ELECTRICAL PANELS, SWITCHGEAR, DISCONNECTS AND TERMINAL CABINETS SHALL BE IDENTIFIED WITH A PERMANENTLY AFFIXED NAME PLATE INDICATING VOLTAGE, AMPERES, MANUFACTURER, MODEL NUMBER AND THE NAME AND THE LOCATION OF THE EQUIPMENT THAT THEY SERVE.
18. THE CONTRACTOR SHALL FIRESTOP ALL PENETRATIONS OF FIRE-RATED PARTITIONS (WALLS, FLOORS OR CEILINGS) WITH AN APPROVED FIRESTOP SYSTEM RATED FOR THE APPLICATION. THE FIRESTOP SYSTEM SHALL BE UL LISTED AND INSTALLED IN STRICT COMPLIANCE WITH THE MANUFACTURER'S INSTRUCTIONS.
19. INSTALLATION SHALL CONFORM TO THE NATIONAL ELECTRICAL CODE, FLORIDA BUILDING CODE, AND ALL OTHER APPLICABLE LOCAL CODES AND ORDINANCES ENFORCED BY THE AUTHORITY HAVING JURISDICTION.
20. ALL RACEWAY SYSTEMS SHALL HAVE A MAXIMUM OF (4) 90-DEGREE BENDS BETWEEN PULL BOXES.
21. PROVIDE A PULL STRING IN ALL EMPTY CONDUIT RUNS.
22. FLEXIBLE CONDUIT CONNECTIONS TO EQUIPMENT SHALL BE LIMITED TO 6'-0" IN LENGTH OR TO BE SUPPORTED PER NEC.
23. JUNCTION AND PULL BOXES SHALL BE SIZED WITH AT LEAST 50% MORE CAPACITY ABOVE AND BEYOND THE MINIMUM REQUIRED BY THE NEC.
24. PROVIDE WATERTIGHT CONDUIT HUB FITTINGS FOR ALL CONDUITS ENTERING/EXITING ENCLOSURE TO MAINTAIN NEMA RATING AS SPECIFIED FOR ENCLOSURE.
25. PROVIDE WATERTIGHT SEALING FOR WALL PENETRATION.
26. ALL CONVENIENCE OUTLETS SHALL BE MOUNTED AT 18" AFF UNLESS OTHERWISE NOTED.
27. ALL COUNTERTOP OUTLETS SHALL BE MOUNTED AT 6" ABOVE THE COUNTER UNLESS OTHERWISE NOTED.
28. ALL CONVENIENCE OUTLETS IN RESTROOMS SHALL BE MOUNTED AT 44" AFF UNLESS OTHERWISE NOTED.
29. THE ELECTRICAL CONTRACTOR SHALL FIELD VERIFY ALL EQUIPMENT CONNECTION TYPES AND REQUIREMENTS PRIOR TO ROUGH-IN AND INSTALLATION OF DEVICES. THE ELECTRICAL CONTRACTOR SHALL MAKE ADJUSTMENTS IN FIELD TO MATCH ACTUAL EQUIPMENT BEING INSTALLED. CONTRACTOR IS RESPONSIBLE FOR MAKING ALL FINAL CONNECTIONS TO EQUIPMENT PROVIDED BY OTHERS.
30. THE PLANS REFLECT SYSTEM VOLTAGES DROP AS PER 2017 FBC ENERGY CONSERVATION FBC-EC C405.6.3 - SIXTH EDITION. THE CONDUCTORS FOR FEEDERS AND BRANCH CIRCUITS COMBINED SHALL BE SIZED FOR A MAXIMUM OF 5 PERCENT VOLTAGE DROP TOTAL AT DESIGN LOAD.

**B1 GENERAL NOTES**  
SCALE: NOT TO SCALE

-  DUPLEX RECEPTACLE, MOUNT 18" AFF UNLESS OTHERWISE NOTED
-  GFI GROUND FAULT CIRCUIT INTERRUPTER TYPE, MOUNT 48" AFF UNLESS OTHERWISE NOTED
-  SINGLE POLE TOGGLE SWITCH
-  FUSED DISCONNECT SWITCH
-  SURFACE MOUNTED PANEL
-  BRANCH CIRCUIT HOME RUN WITH CIRCUIT NUMBER SEE PANEL SCHEDULES FOR DETAILS
-  LUMINAIRE.

**A1 LEGEND**  
SCALE: NOT TO SCALE

**EXISTING PANEL 'EQLDP' SCHEDULE**

<u>208/120</u> AMPS	MAIN BREAKER	- AMPS	INSTALLATION	SURFACE
<u>3</u> PHASE	LUGS	- AMPS	LOCATION	-
<u>4</u> WIRE	GND. BAR	<u>CU</u>	PANEL FEEDER	-
<u>30</u> POLE SPACES	SC RATING	<u>10</u> KAIC	NOTES:	<u>BOLD INDICATES NEW WORK</u>
	ENCLOSURE	<u>NEMA 1</u>		

DESCRIPTION	CB, AMPS	DMD.	CIR #	CIR #	DMD.	CB, AMPS	DESCRIPTION
BATT CHARGER & GEN HEATER	30/2	-	1	2	-	20/3	ELEVATOR FAN
SHUNT TRIP		-	3	4	-		
SHUNT TRIP		-	5	6	-		
<b>CAB LIGHTS B</b>	20/1	-	7	8	-	20/1	FIRE ALARM PANEL
SHUNT TRIP	20/1	-	9	10	-	20/1	SPARE
<b>CAB LIGHTS B</b>	20/1	-	11	12	-	20/1	DOOR LOCKS
SPARE	20/1	-	13	14	-	20/1	PIT LIGHTS
RECEPTACLE	20/1	-	15	16	-	20/1	PUMP ROOM EXHAUST FAN
FOUNTAIN CONTROLLER	20/1	-	17	18	-	20/1	JOHNSON CONTROLS
SHUNT TRIP	20/1	-	19	20	-	20/1	SPARE
ELEVATOR ROOM EXH. FAN	20/1	-	21	22	-	20/1	SPARE
BAS	20/1	-	23	24	-	20/1	SPARE
SPARE	20/1	-	25	26	-	20/1	RECEPTACLE
FOUNTAIN GFI RECEPTACLE	20/1	-	27	28	-	20/1	RECEPTACLE
SPARE	20/1	-	29	30	-	20/1	RECEPTACLE

LOAD NOTE: NO LOAD INCREASE IS EXPECTED SO NO LOAD STUDY IS BEING CONDUCTED. EQUIPMENT ON THIS PANEL IS BEING REPLACE ONE TO ONE.

**E3 PANEL EQLDP SCHEDULE**  
SCALE: NOT TO SCALE

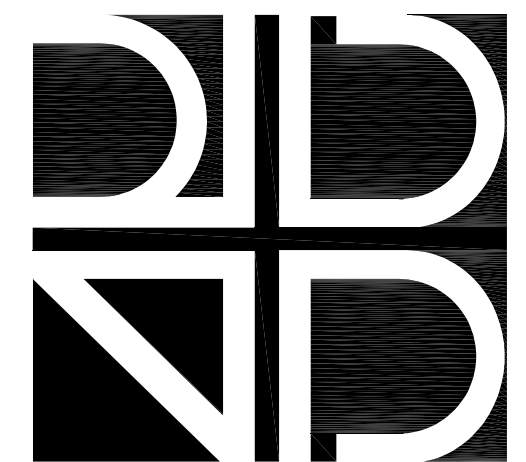
**EXISTING PANEL 'EQHDP' SCHEDULE**

<u>225</u> AMPS	MAIN BREAKER	- AMPS	INSTALLATION	SURFACE
<u>480/277</u> VOLTS	LUGS	<u>225</u> AMPS	LOCATION	-
<u>3</u> PHASE	GND. BAR	<u>CU</u>	PANEL FEEDER	-
<u>4</u> WIRE	SC RATING	- KAIC	NOTES:	<u>BOLD INDICATES NEW WORK</u>
<u>42</u> POLE SPACES	ENCLOSURE	<u>NEMA 1</u>		

DESCRIPTION	CB, AMPS	DMD.	CIR #	CIR #	DMD.	CB, AMPS	DESCRIPTION
SPACE	-	-	1	2	-	-	SPACE
SPACE	-	-	3	4	-	20/1	SPACE
SPARE	20/1	-	5	6	-	20/1	SPACE
SPARE	20/1	-	7	8	-	20/1	SPACE
SPARE	20/1	-	9	10	-		
SPARE	20/1	-	11	12	-	15/3	SPACE
		-	13	14	-		
STAIRWELL FAN 1	15/3	-	15	16	-		
		-	17	18	-	15/3	SPACE
		-	19	20	-		
STAIRWELL FAN 2	15/3	-	21	22	-		
		-	23	24	-	15/3	JOCKEY PUMP
		-	25	26	-		
STAIRWELL FAN 3	15/3	-	27	28	-		
		-	29	30	-	100/3	ELEVATOR A
		-	31	32	-		
STAIRWELL FAN 4	15/3	-	33	34	-	-	SHUNT TRIP
		-	35	36	-		
		-	37	38	-	100/3	ELEVATOR B
TRANSFORMER	15/3	-	39	40	-		
		-	41	42	-	-	SHUNT TRIP

LOAD NOTE: NO LOAD INCREASE IS EXPECTED SO NO LOAD STUDY IS BEING CONDUCTED. EQUIPMENT ON THIS PANEL IS BEING REPLACE ONE TO ONE.

**A3 PANEL EQHDP SCHEDULE**  
SCALE: NOT TO SCALE



rhodes + brito  
ARCHITECTS

A4002869  
605 E. ROBINSON STREET, SUITE 750  
ORLANDO, FL 32801  
PH (407) 648-7286  
www.rhodesbr.com

Consultants



C&S Engineers, Inc.

605 E. Robinson Street, Suite 210  
Orlando, Florida 32801  
Phone: 407-522-1118  
Fax: 407-841-9149  
www.candse.com  
FL. L.B. No. 7513, COA No. 7602



CAPITAL PROJECTS  
DIVISION

ORANGE COUNTY  
GOVERNMENT

INTERNAL OPERATIONS  
CENTER II - ELEVATOR  
MODERNIZATION

CONSTRUCTION  
DOCUMENTS

400 E. South Street  
Orlando, FL 32801

ALL REPRODUCTION AND INTELLECTUAL  
PROPERTY RIGHTS RESERVED ©

Seal

Xiang Cao  
FL Reg No. 74060

CONSTRUCTION DOCUMENTS

DATE	SUBMISSION/REVISION	NO.
------	---------------------	-----

LEGEND, NOTES,  
ABBREVIATIONS, AND  
PANEL SCHEDULES

SCALE: As Indicated

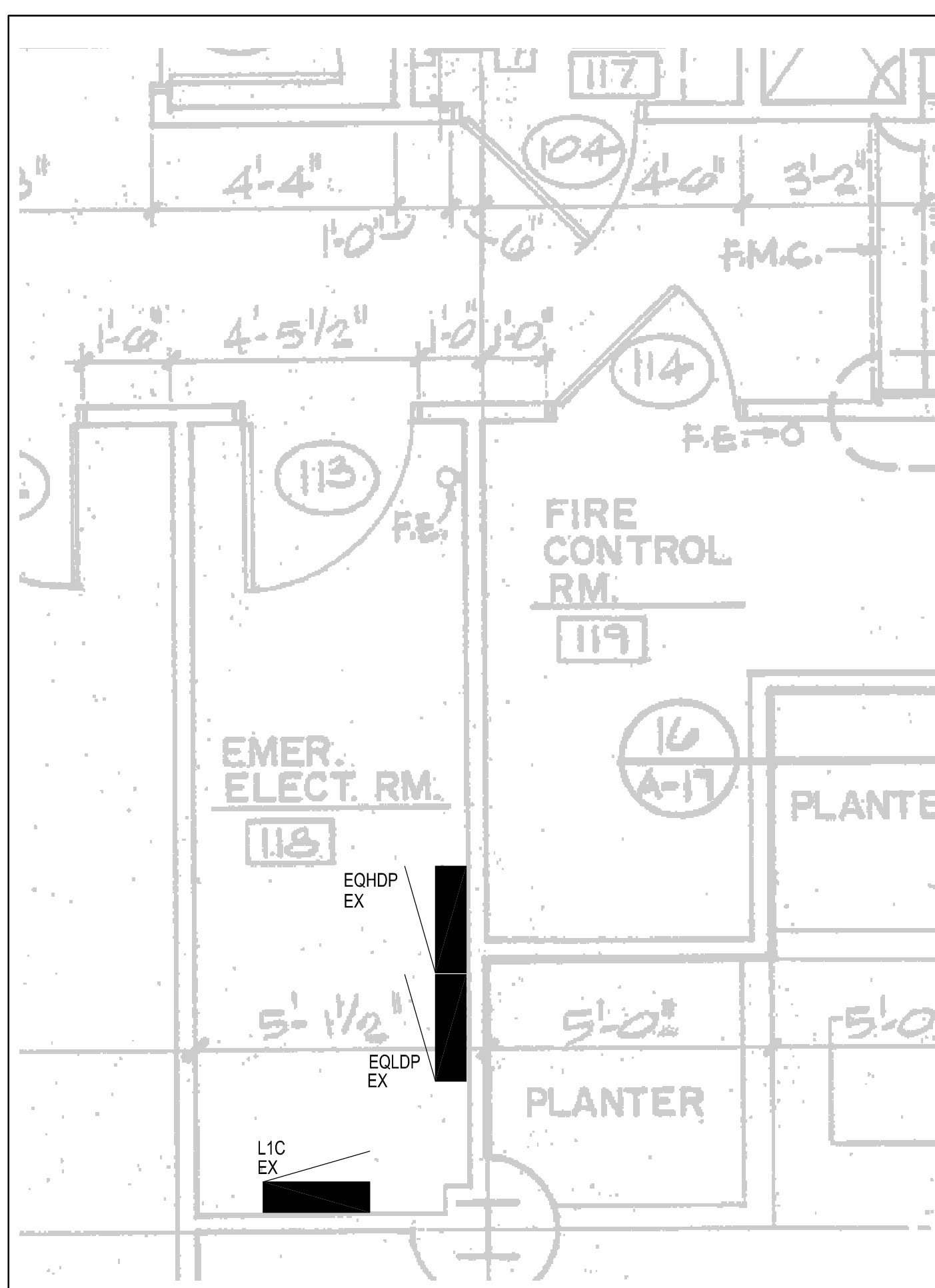
DRAWN BY: TC

CHECK BY: XC

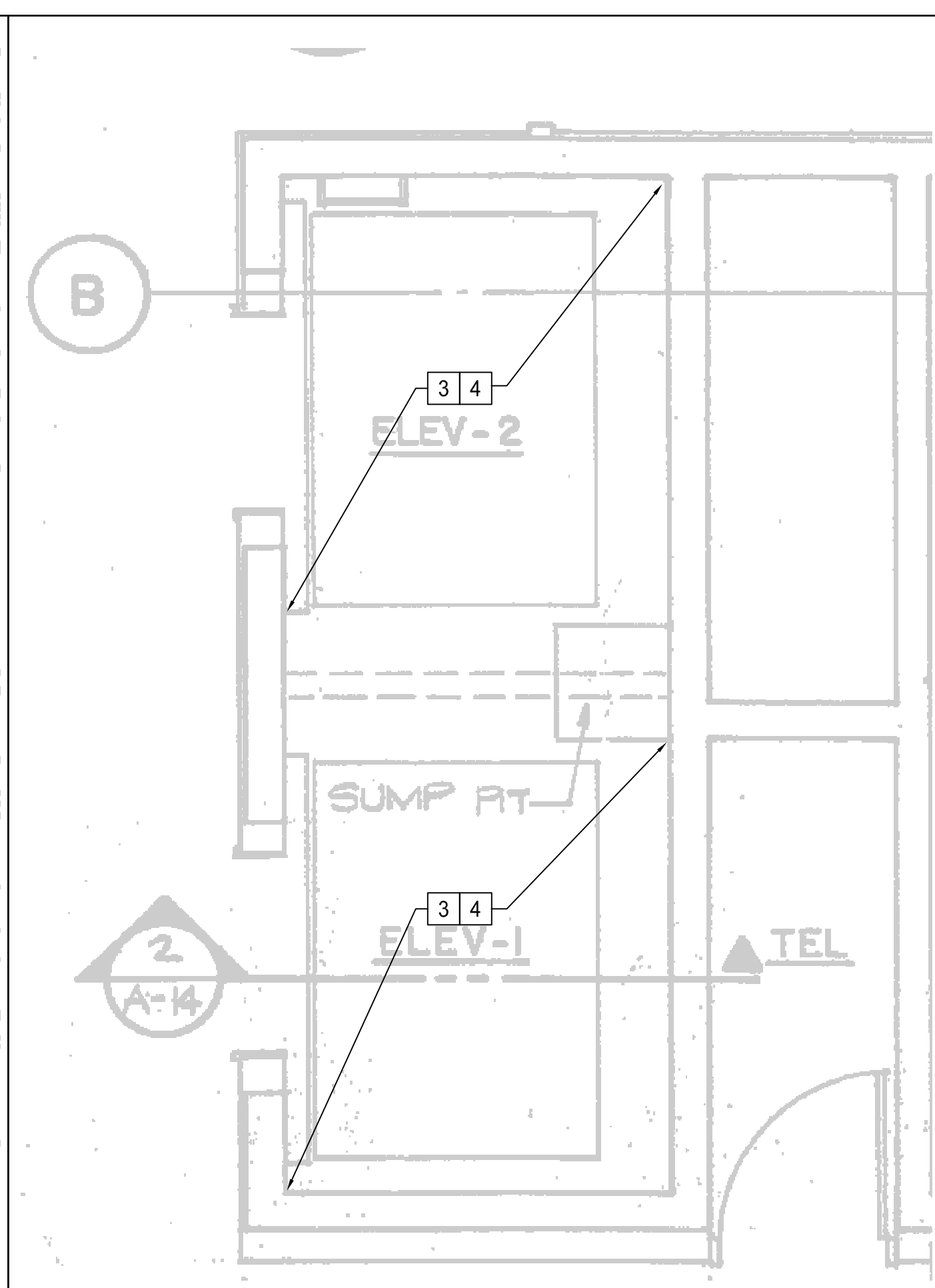
DATE: June 19, 2018

PROJECT NUMBER: 15012.0029

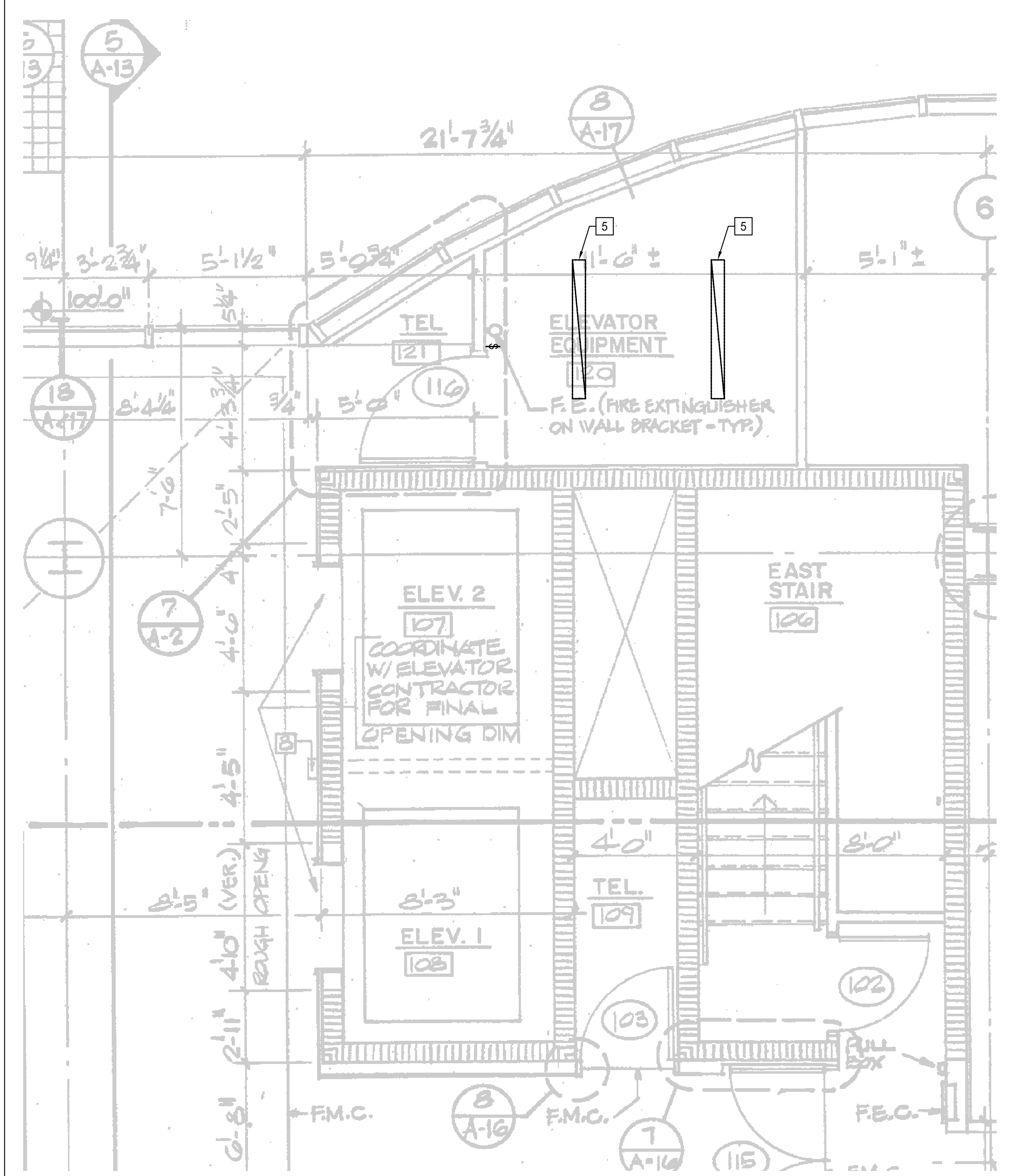
**E100**



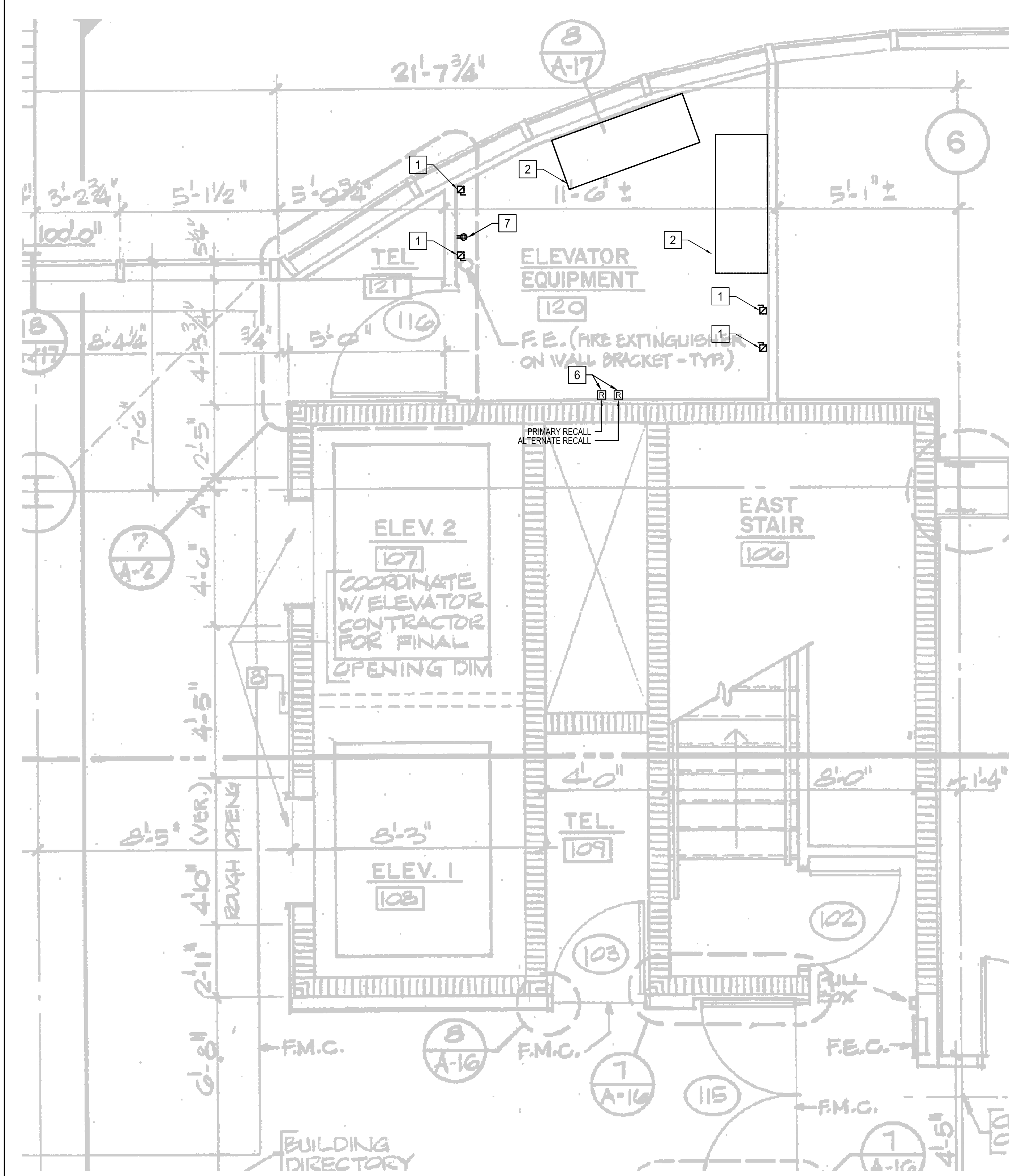
**F1** LOCATION OF EXISTING PANELS  
SCALE: 1/2" = 1'-0"



**F3** ELEVATOR PIT LIGHTING DEMOLITION  
SCALE: 1/2" = 1'-0"



**A1** LIGHTING DEMOLITION PLAN  
SCALE: 1/2" = 1'-0"



**A5** POWER DEMOLITION PLAN  
SCALE: 1/2" = 1'-0"

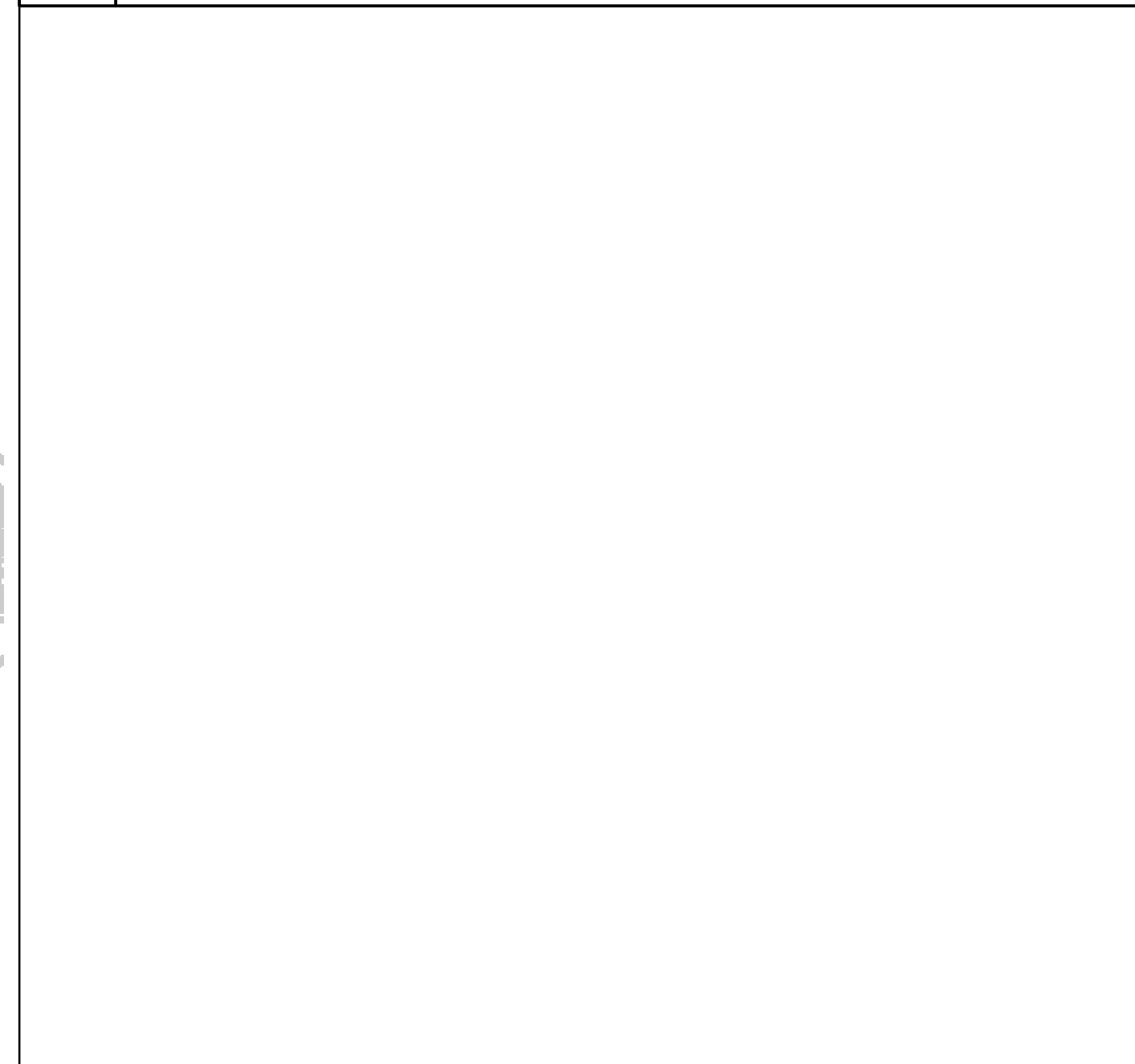
1. ALL ELECTRICAL EQUIPMENT, LIGHTING, DEVICES, SWITCHES, ETC. INDICATED ARE TO BE DEMOLISHED UNLESS INDICATED AS EX.

2. REUSE CIRCUITS, CONDUIT, ETC AS POSSIBLE FOR NEW DEVICES. DEMOLISH WIRING BACK TO PANEL FOR ALL DEMOLISHED DEVICES U.O.N.

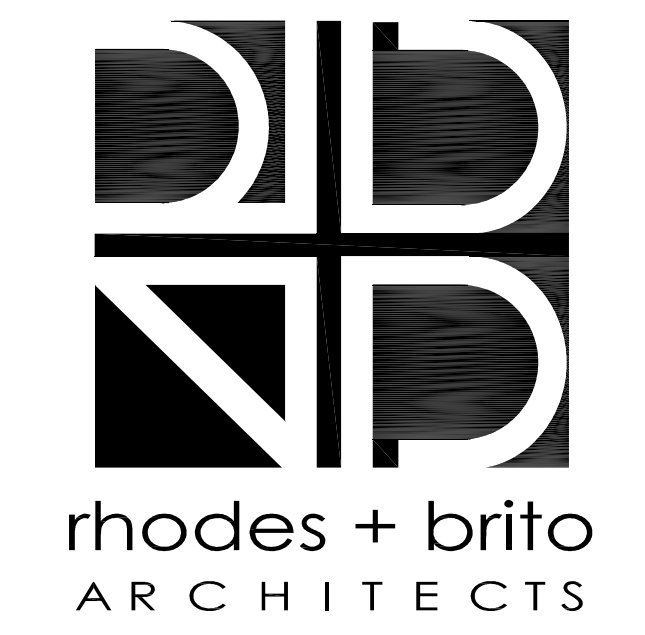
**G9 SHEET NOTES**  
SCALE: NOT TO SCALE

- 1 DEMOLISH EXISTING DISCONNECT AND WIRING BACK TO PANEL. CONDUIT SHALL BE EXISTING TO REMAIN FOR REUSE. DISCONNECT EXISTING WIRES TO ELEVATOR CAB LIGHTS. WIRES, CONDUIT, ETC. TO CAB SHALL BE EXISTING TO REMAIN.
- 2 DISCONNECT EXISTING SHUNT TRIP, FIRE ALARM, RELAY CONNECTIONS, ETC. TO BE RECONNECTED TO NEW ELEVATOR CONTROLS.
- 3 DEMOLISH EXISTING LIGHTING IN PIT AND WIRING TO SERVING PANEL. EXISTING CIRCUIT, CONDUIT, ETC. TO BE REUSED FOR NEW LIGHTS.
- 4 DEMOLISH EXISTING ELECTRICAL RECEPTACLE IN PIT AND WIRING TO SERVING PANEL. EXISTING CIRCUIT, CONDUIT, ETC. TO BE REUSED FOR RECEPTACLE.
- 5 EXISTING EQUIPMENT ROOM LIGHTING TO BE REPLACED. EXISTING CONDUCTORS AND CONDUIT BACK TO BRANCH PANELS TO BE REUSED.
- 6 EXISTING FIRE ALARM RELAYS TO BE REPLACED. EXISTING CONDUCTORS AND CONDUIT BACK TO BRANCH PANELS TO BE REUSED.
- 7 EXISTING ELEVATOR EQUIPMENT ROOM RECEPTACLE TO BE REMOVED AND REPLACED WITH NEW GFI RECEPTACLE. EXISTING CONDUCTORS AND CONDUIT TO BE REUSED WHERE POSSIBLE.

**E9 REFERENCE NOTES**  
SCALE: NOT TO SCALE



**A9** OVERALL PLAN  
SCALE: 3/32" = 1'-0"



rhodes + brito  
ARCHITECTS  
AA0002809  
605 E. ROBINSON STREET, SUITE 210  
ORLANDO, FL 32801  
PH (407) 648-7288  
www.rbarchitects.com



C&S Engineers, Inc.  
605 E. Robinson Street, Suite 210  
Orlando, Florida 32801  
Phone: 407-422-1118  
Fax: 407-341-6149  
www.cscos.com  
FL L.B. No. 7513, CDA No. 7802



CAPITAL PROJECTS  
DIVISION

ORANGE COUNTY  
GOVERNMENT

INTERNAL OPERATIONS  
CENTER II - ELEVATOR  
MODERNIZATION

CONSTRUCTION  
DOCUMENTS

400 E. South Street  
Orlando, FL 32801  
ALL REPRODUCTION AND INTELLECTUAL  
PROPERTY RIGHTS RESERVED ©

Seal

Xiang Cao  
FL Reg No. 74060

CONSTRUCTION DOCUMENTS

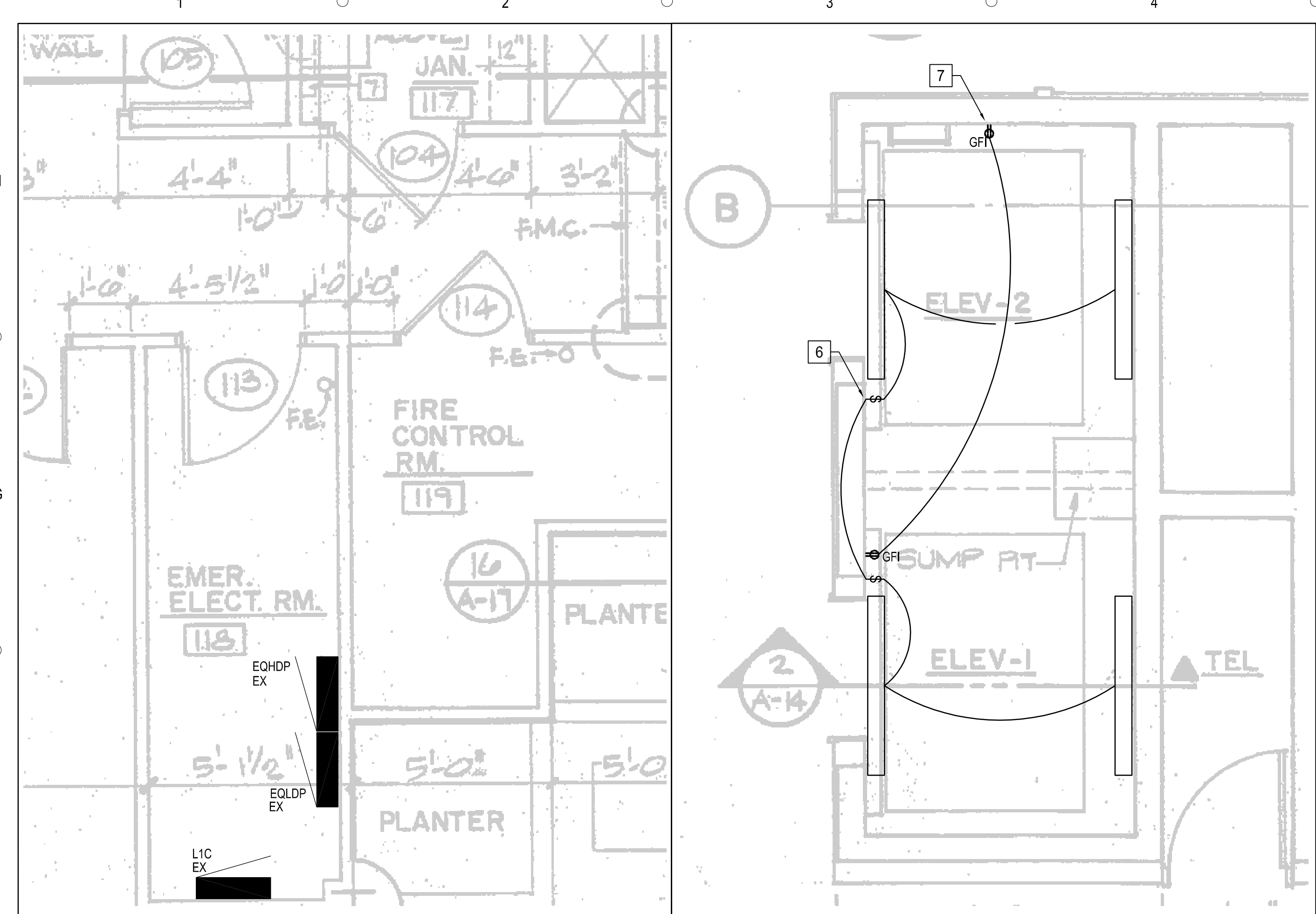
DATE	SUBMISSION/REVISION	NO.

ELECTRICAL  
DEMOLITION PLAN

SCALE: As Indicated  
DRAWN BY: TC  
CHECK BY: XC  
DATE: June 19, 2018  
PROJECT NUMBER: 15012.0029

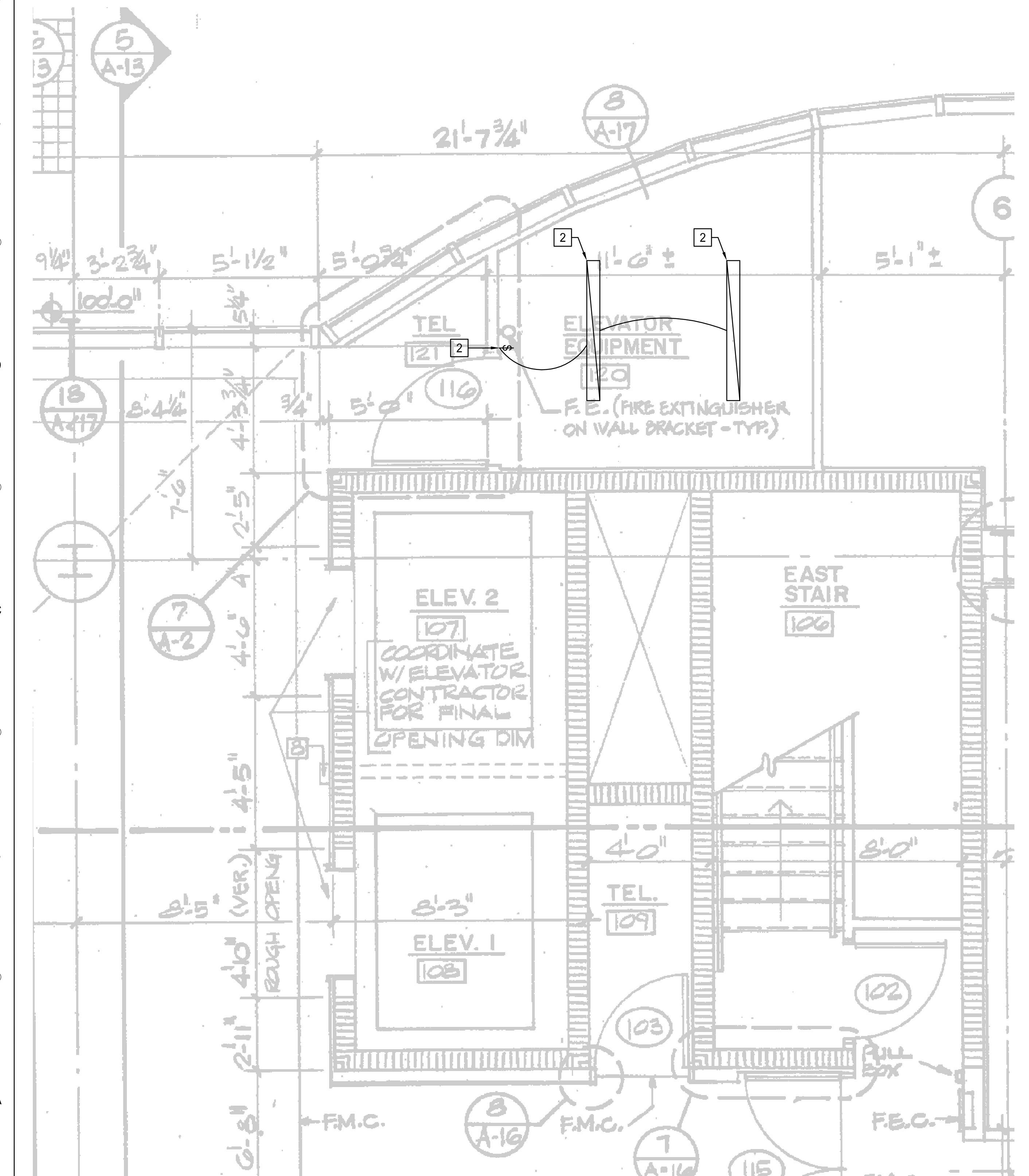
ED201



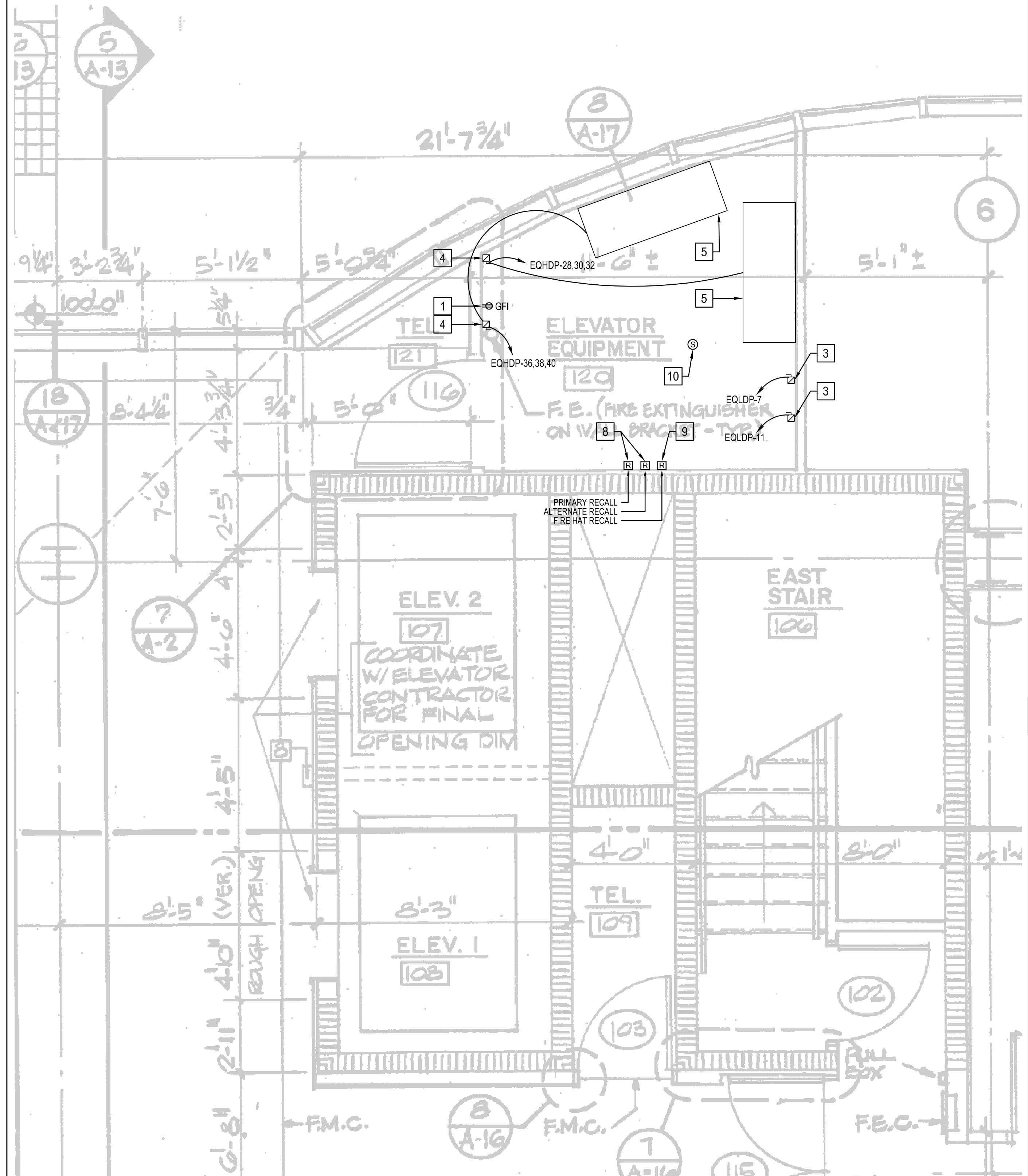


**F1** LOCATION OF EXISTING PANELS  
SCALE: 1/2" = 1'-0"

**F3** ELEVATOR PIT LIGHTING NEW WORK  
SCALE: 1/2" = 1'-0"



**A1** LIGHTING NEW WORK PLAN  
SCALE: 1/2" = 1'-0"



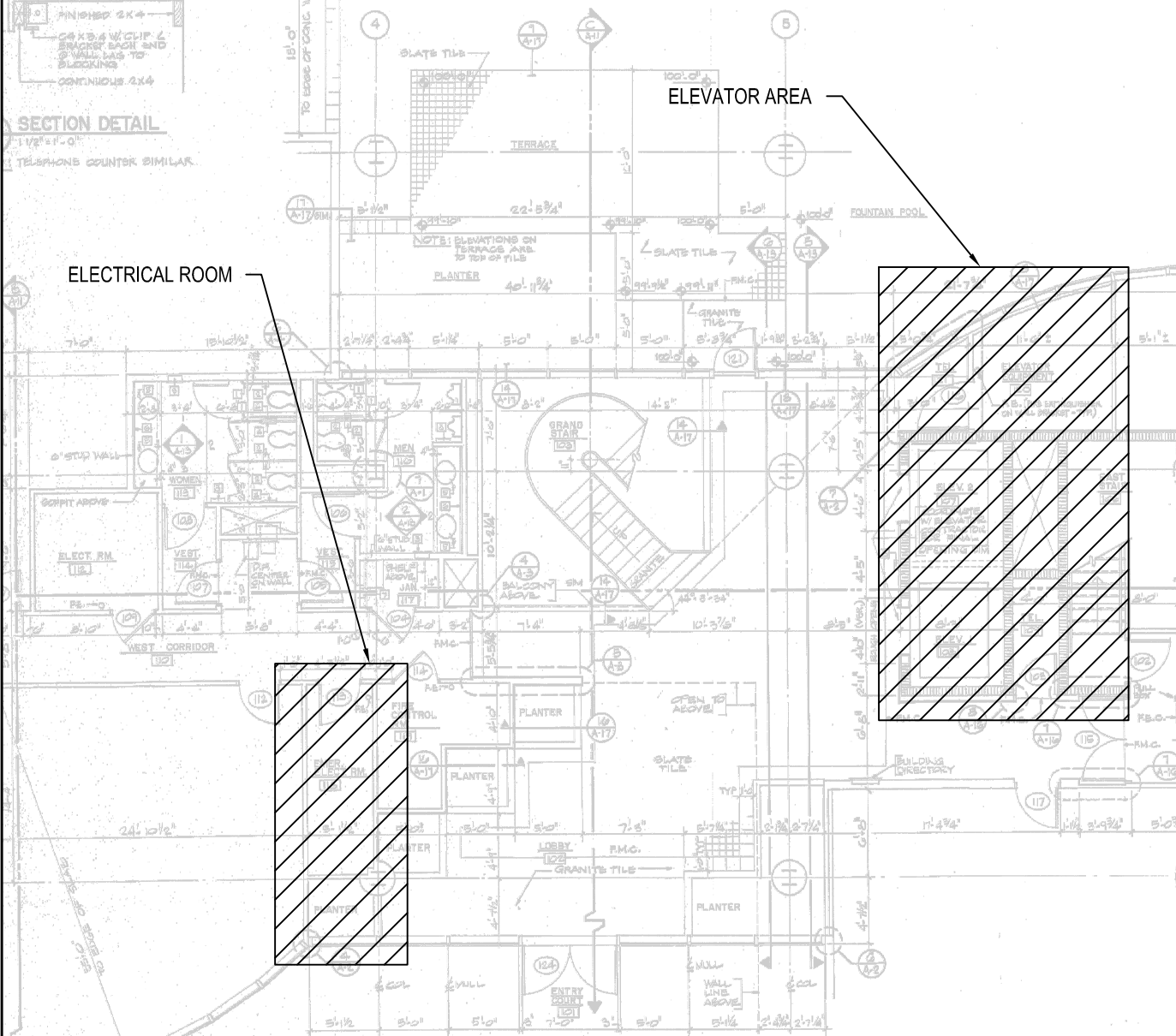
**A5** POWER NEW WORK PLAN  
SCALE: 1/2" = 1'-0"

1. ALL ELECTRICAL EQUIPMENT, LIGHTING, SWITCHES, RECEPTACLES, ETC. INDICATED IN THIS PLAN ARE NEW U.O.N.
2. REUSE CIRCUITS, CONDUIT, ETC AS POSSIBLE FOR NEW DEVICES. PROVIDE NEW WIRING BACK TO INDICATED PANEL.
3. ALL CIRCUITS, WIRING, ETC FROM CONTROL EQUIPMENT TO ELEVATOR TO BE BY ELEVATOR CONTRACTOR.
4. REFER TO THE SPECIFICATIONS FOR ADDITIONAL INFORMATION REGARDING ELEVATOR CONTROLS, AND HYDRAULIC SYSTEM.
5. EXISTING SMOKE DETECTORS IN ELEVATOR LOBBIES ARE EXISTING TO REMAIN.
6. PRIOR TO ANY LIGHT LEVEL INSPECTIONS CONTRACTOR SHALL PRE-TEST EACH AREA TO ENSURE PROPER LEVELS ARE PRESENT PRIOR TO CALLING INSPECTOR.

**G9** SHEET NOTES  
SCALE: NOT TO SCALE

1. PROVIDE NEW NEMA 5-20R RECEPTACLE IN EXISTING BOX FROM DEMOLISHED RECEPTACLE. PROVIDE NEW WIRING IN EXISTING CONDUIT BACK TO EXISTING CIRCUIT IN ELECTRICAL ROOM.
2. PROVIDE NEW LIGHT FIXTURES IN LOCATION OF DEMOLISHED FIXTURES. PROVIDE NEW SWITCH AND WIRE IN EXISTING CONDUIT TO EXISTING CIRCUIT IN ELECTRICAL ROOM. NEW LIGHT FIXTURES SHALL BE LITHONIA FEM-L48-3000LM-LPAFL-MD-MVOLT-35K-80CRI OR APPROVED EQUAL.
3. PROVIDE NEW HEAVY DUTY 240V 1POLE 30A N3R FSS WITH 20A TYPE J FUSES FOR ELEVATOR CAB LIGHTS. PROVIDE NEW 2#12,1#12G TO INDICATED CIRCUIT IN PANEL EQDP. RECONNECT EXISTING WIRES TO EXISTING ELEVATOR CAB LIGHTS. FSS SHALL BE SQUARE D H221NRB OR APPROVED EQUAL.
4. PROVIDE NEW HEAVY DUTY 600V 3POLE 100A N3R FSS WITH TYPE J FUSES. FUSE SIZES SHALL MATCH EXISTING FUSE SIZES. PROVIDE SQUARE D H363NRB OR APPROVED EQUAL. PROVIDE NEW 3#3,1#8G IN EXISTING CONDUIT TO EXISTING CIRCUIT INDICATED ON PLAN.
5. RECONNECT EXISTING SHUNT TRIP, FIRE ALARM, RELAY CONNECTIONS, ETC. TO NEW ELEVATOR CONTROLS.
6. PROVIDE NEW LIGHTS CIRCUITED TO EXISTING ELEVATOR PIT LIGHTING CIRCUIT. PROVIDE NEW 2#12,1#12GND WIRE IN EXISTING CONDUIT. NEW LIGHT FIXTURES SHALL BE WET LISTED LITHONIA FEM-L48-3000LM-LPAFL-MD-MVOLT-35K-80CRI OR APPROVED EQUAL.
7. PROVIDE NEW DUPLEX, GFI RECEPTACLES ON EXISTING CIRCUIT. PROVIDE NEW 2#12,1#12GND WIRE IN EXISTING CONDUIT.
8. REPLACE EXISTING RECALL FIRE ALARM RELAYS AND REUSE EXISTING CONDUCTORS RUNNING BACK TO FIRE ALARM CONTROL PANEL. NEW RELAY TO MATCH EXISTING GAMEWELL-FCI RELAYS, DESIGN SPEC SHALL BE GAMEWELL-FCI, RCE-95 RELAY OR APPROVED EQUAL.
9. PROVIDE A NEW FIRE HAT RELAY WITH (2)#14 CONDUCTORS RUNNING TO EXISTING FIRE ALARM CONTROL PANEL. EXISTING FIRE ALARM CONDUIT RACEWAYS TO BE REUSED WHERE POSSIBLE. NEW RELAY TO MATCH EXISTING GAMEWELL-FCI RELAYS, DESIGN SPEC SHALL BE GAMEWELL-FCI, RCE-95 RELAY OR APPROVED EQUAL.
10. EXISTING ELEVATOR EQUIPMENT ROOM SMOKE DETECTOR TO BE REPLACED. EXISTING CONDUCTORS AND CONDUIT BACK TO NEAREST SLC TIE-IN JUNCTION BOX TO BE REUSED. NEW DETECTOR SHALL BE COMPATIBLE WITH EXISTING FCI FIRE SYSTEM.

**D9** REFERENCE NOTES  
SCALE: NOT TO SCALE



**A9** OVERALL PLAN  
SCALE: 3/32" = 1'-0"



CAPITAL PROJECTS  
DIVISION

ORANGE COUNTY  
GOVERNMENT

INTERNAL OPERATIONS  
CENTER II - ELEVATOR  
MODERNIZATION

CONSTRUCTION  
DOCUMENTS

400 E. South Street  
Orlando, FL 32801

ALL REPRODUCTION AND INTELLECTUAL  
PROPERTY RIGHTS RESERVED ©

Seal

Xiang Cao  
Fl Reg No. 74060

CONSTRUCTION DOCUMENTS

DATE SUBMISSION/REVISION NO.

ELECTRICAL NEW WORK  
PLAN

SCALE: As Indicated

DRAWN BY: TC

CHECK BY: XC

DATE: June 19, 2018

PROJECT NUMBER: 15012.0029

E201