



CONSTRUCTION PLANS FOR LITTLE EGYPT SIDEWALK IMPROVEMENTS

ORANGE COUNTY - DISTRICT NO. 6 PROJECT NO: 0193

TERESA JACOBS, COUNTY MAYOR

BOARD OF COUNTY COMMISSIONERS

- | | |
|---------------------------|-------------------|
| BETSY VANDERLEY | DISTRICT 1 |
| BRYAN NELSON | DISTRICT 2 |
| PETE CLARKE | DISTRICT 3 |
| JENNIFER THOMPSON | DISTRICT 4 |
| EMILY BONILLA | DISTRICT 5 |
| VICTORIA P. SIPLIN | DISTRICT 6 |

MARK V. MASSARO, P.E., PUBLIC WORKS DIRECTOR

GOVERNING STANDARDS AND SPECIFICATIONS:
FLORIDA DEPARTMENT OF TRANSPORTATION
DESIGN STANDARDS DATED 2017-2018,
AND STANDARD SPECIFICATIONS FOR ROAD AND
BRIDGE CONSTRUCTION DATED 2018, AS AMENDED
BY CONTRACT DOCUMENTS.

NOTE: THE SCALE OF THESE PLANS MAY HAVE
CHANGED DUE TO REPRODUCTION.

LENGTH OF PROJECT

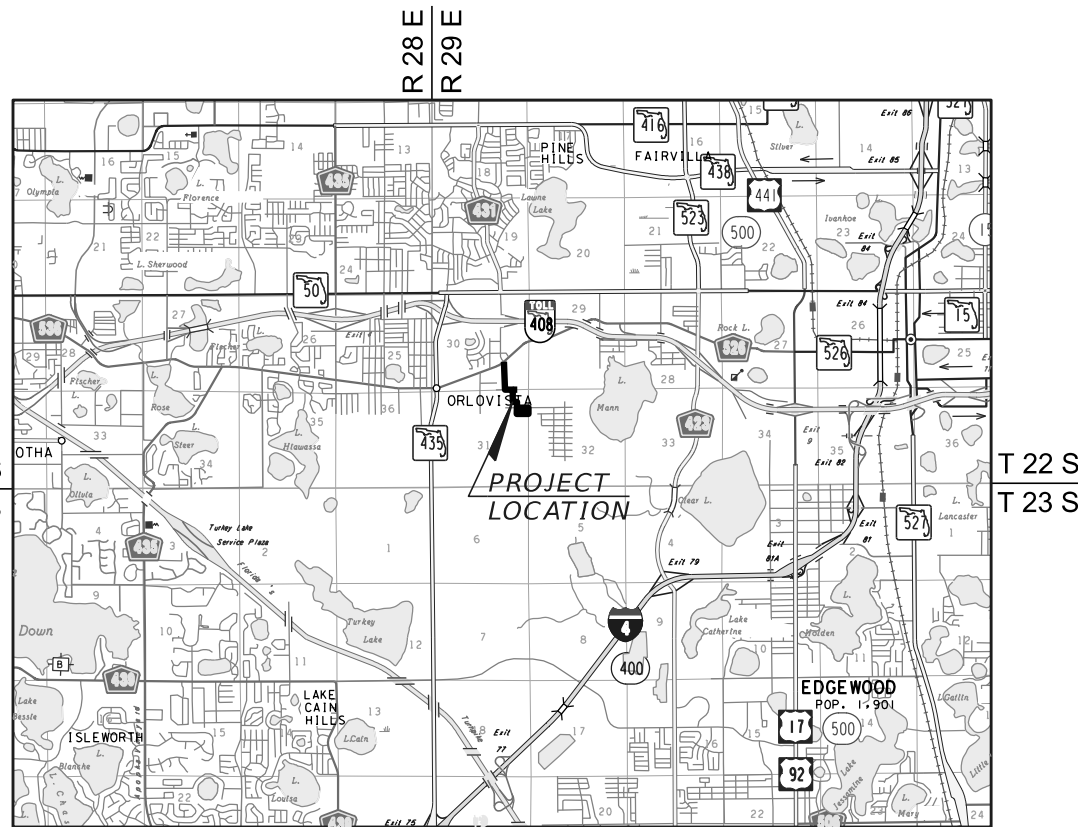
	LINEAR FT.	MILES
COLLIER BLVD., HUPPEL AVE. & ROGERS ST.	1,524.31	0.289
W. SOUTH STREET	690.00	0.131
NOME DRIVE	1,525.02	0.289
CARTER STREET	641.40	0.121
COLLEGE DRIVE	649.49	0.123
ELLIS AVENUE	302.05	0.057
MERCER STREET	390.38	0.074
TOTAL LENGTH OF PROJECT	5,722.65	1.084

SOURCE OF BENCH MARK DATUM

THE SOURCE BENCHMARK USED IS BASED ON ORANGE COUNTY 88 DATUM:

L-1195-011 - REC. 3" O.C. ALUMINUM DISC ON E. SIDE C/L OF CONCRETE
DROP INLET; N.W. CORNER OF OLD WINTER GARDEN RD. AND PINE HILLS RD.
ELEVATION: 97.701'

L-1195-012 - REC. 2.5" O.C. CONTROL DISC ON TOP OF CONCRETE CURB
INLET, S. SIDE OF OLD WINTER GARDEN RD.; 200' +/- E. OF PINE HILLS
RD/NOME DR.
ELEVATION: 97.035'



VICINITY MAP

NOTE:

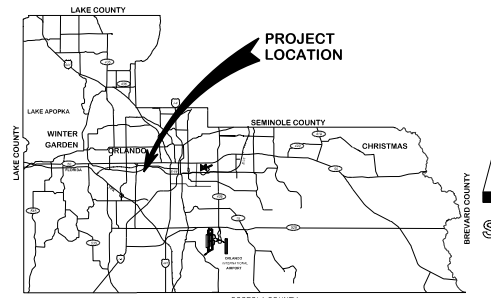
PLANS WERE PREPARED ACCORDING TO AVAILABLE INFORMATION TO ADEQUATELY
ADDRESS CONDITIONS AS THEY EXISTED AT THE TIME OF PLANS PREPARATION.
NEEDS, CONDITIONS AND OWNERSHIP OF PROPERTIES MAY HAVE CHANGED SINCE
PROJECT DESIGN. THE COUNTY'S REPRESENTATIVE WILL ADDRESS CHANGES AND
NEEDS WITH THE PROPERTY OWNER OR THEIR REPRESENTATIVES. CONTRACTOR
SHALL WORK WITH THE COUNTY'S REPRESENTATIVE IN ADDRESSING AND MEETING
NEEDS AND CONDITIONS THAT MAY HAVE CHANGED SINCE PLANS PREPARATION.

CERTIFICATION TO PLANS

I HEREBY CERTIFY that the design for this project and the attached construction plans comply with
the requirements of Section 336.045 of the Florida Statutes and are in substantial conformance with

the standards contained in the edition of the "Manual of Uniform Minimum Standards for Design,
Construction and Maintenance for Streets and Highways" in effect on this date as adopted by the
Florida Department of Transportation pursuant to Subsection 336.045(1) of the Florida Statutes.

DATE: _____ ENGINEER: CLAUDE L. CASSAGNOL, P.E. REG. NO. 35490
State of Florida



SEC. 30, 31 & 32, TWP. 22 S, RGE. 29 E

LOCATION MAP

INDEX OF SHEETS

SHEET	DESCRIPTION
1	COVER SHEET
2	GENERAL NOTES
3	PROJECT LAYOUT SHEET
4	STANDARD DRAWINGS AND DETAILS
5	SUMMARY OF PAY ITEMS
6-13	DRAINAGE MAP
14-15	TYPICAL SECTIONS
16-17	SUMMARY OF QUANTITIES
18-19	SUMMARY OF DRAINAGE STRUCTURES
20-33	PLAN AND PROFILE SHEETS
34-46	DRAINAGE STRUCTURE CROSS SECTIONS
47-49	GEOTECHNICAL SOIL SURVEY SHEETS
50-72	CROSS SECTIONS
SV-1 TO SV-16	SURVEY CONTROL SHEETS

UTILITIES ENCOUNTERED

AT&T DISTRIBUTION	321-695-6049
ORANGE COUNTY PUBLIC WORKS	407-836-7804
ORANGE COUNTY UTILITES	407-254-9706
OUC - DEVELOPMENT SERVICES	407-434-2569
OUC - WATER	407-434-2569
OUC - ELECTRIC	407-434-4144
CHARTER COMMUNICATIONS	407-532-8509
TECO PEOPLES GAS	407-420-2678
FLORIDA GAS TRANSMISSION CO.	407-838-7171
CITY OF ORLANDO - WASTEWATER	407-246-3525
DUKE ENERGY	727-893-9394
FIBERNET DIRECT	305-552-2931

GTC Engineering Corporation

98 South Semoran Blvd, Orlando, FL 32807
Phone Number - 407.380.0402

Certificate of Authorization Claude L. Cassagnol, P.E.
Number 6758 P.E. Number 35490

REVISIONS	DATE	BY

DESIGNED BY: CLC/AM/JAR DATE: 5/8/2018
DRAWN BY: AM/JAR DATE: 5/8/2018
CHECKED BY: CLC DATE: 5/8/2018
APPROVED BY: CLC DATE: 5/8/2018
PROJECT NO: 0193

SHEET 1
OF 88

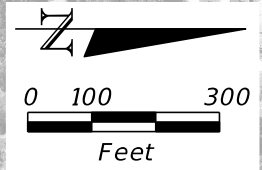
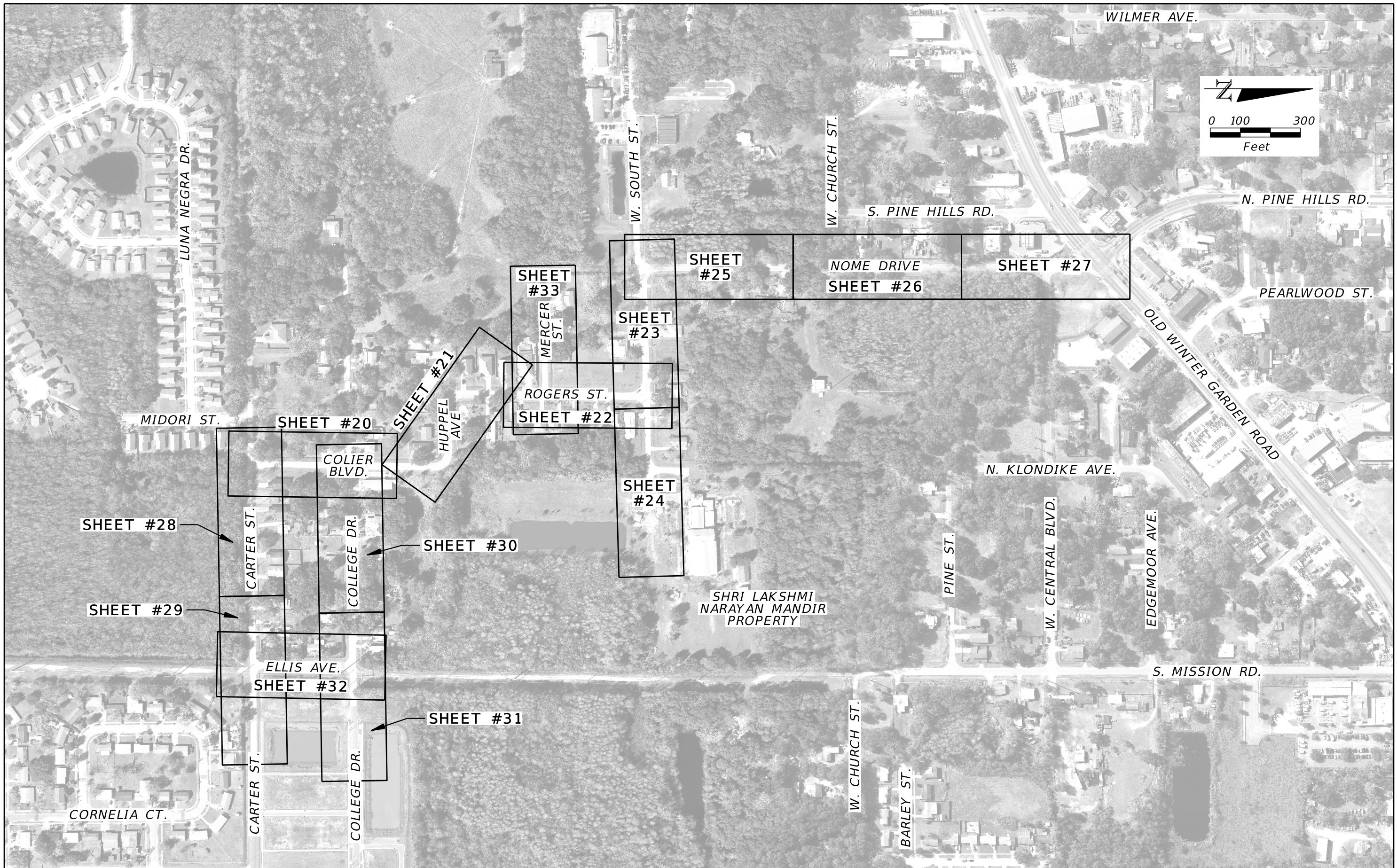
**FINAL SUBMITTAL
MAY, 2018**

GENERAL NOTES

- | | | |
|---|--|--|
| <p>1 ALL CONSTRUCTION SHALL BE IN ACCORDANCE WITH AND CONFORM TO THE MOST STRINGENT REQUIREMENT OF THE PROJECT SPECIFICATIONS, THE YEAR 2018 EDITION OF THE FLORIDA DEPARTMENT OF TRANSPORTATION STANDARD SPECIFICATIONS FOR ROAD AND BRIDGE CONSTRUCTION (FDOT), AND SUPPLEMENTS THERETO, AND ORANGE COUNTY ROAD CONSTRUCTION SPECIFICATIONS.</p> <p>2 SUBSURFACE INFORMATION SHOWN ON THESE DRAWINGS WAS OBTAINED FOR USE IN ESTABLISHING DESIGN CRITERIA FOR THE PROJECT. THE ACCURACY OF THIS INFORMATION IS NOT GUARANTEED AND IS NOT TO BE CONSTRUED AS PART OF THE PLANS GOVERNING CONSTRUCTION OF THE PROJECT. IT IS THE RESPONSIBILITY OF THE CONTRACTOR TO INQUIRE OF THE ENGINEER IF ADDITIONAL INFORMATION IS AVAILABLE, TO MAKE ARRANGEMENTS TO REVIEW SAME PRIOR TO BIDDING, AND TO MAKE HIS OWN DETERMINATION AS TO ALL SUBSURFACE CONDITIONS.</p> <p>3 ALL PERSONAL PROPERTY, EXCEPT MAIL BOXES, WITHIN THE RIGHT-OF-WAY NOT RELOCATED BY THE PROPERTY OWNER SHALL BE REMOVED BY THE CONTRACTOR AS NECESSARY TO CONSTRUCT THE PROJECT IN ACCORDANCE WITH THE PLANS. MAIL BOXES SHALL BE RELOCATED BY THE CONTRACTOR IN ACCORDANCE WITH FDOT DESIGN STANDARD 532.</p> <p>4 THE DISPOSAL OF EXCESS EARTHWORK MATERIALS SHALL BE THE RESPONSIBILITY OF THE CONTRACTOR. APPROVALS OF DISPOSAL SITES SHALL BE OBTAINED FROM ORANGE COUNTY PRIOR TO DISPOSAL. ALL EXCESS MATERIAL IS THE PROPERTY OF THE CONTRACTOR.</p> <p>5 ALL EXISTING TREES WITHIN THE LIMITS OF CONSTRUCTION ARE TO REMAIN UNLESS OTHERWISE NOTED ON THE PLANS OR AS DIRECTED BY THE ENGINEER.</p> <p>6 SOD ALL DISTURBED AREAS UNLESS OTHERWISE SHOWN ON THE PLANS. SOD SHALL MATCH EXISTING TYPE SOD UNLESS OTHERWISE DIRECTED BY THE ENGINEER.</p> <p>7 INSTALL TOPSOIL TREATMENT ON ALL PERMANENT GRASS AREAS.</p> <p>8 SOD ALL SLOPES. SLOPES 3:1 OR STEEPER SHALL BE PEGGED.</p> <p>9 SAWCUT CONCRETE DRIVEWAYS AS REQUIRED FOR CONSTRUCTION.</p> <p>10 ALL PAVEMENT OFFSETS SHOWN ARE FROM PROPOSED CENTERLINE OF CONSTRUCTION; ALL RADII AND DIMENSIONS ARE TO PROPOSED EDGE OF PAVEMENT.</p> <p>11 FOR STABILIZATION AT TURNOUTS AND DRIVEWAY CONNECTIONS, SEE STANDARD INDEX No. 515 AND TYPICAL SECTIONS FOR DEPTH AND LBR.</p> <p>12 DRIVEWAY LOCATIONS AND WIDTHS SHOWN ARE APPROXIMATE AND MAY BE ADJUSTED AS DIRECTED BY THE ENGINEER.</p> <p>13 THE CONTRACTOR SHALL PERFORM HIS WORK IN ACCORDANCE WITH REQUIREMENTS OF THE VARIOUS PERMITS INCLUDED IN THE BID SPECIFICATIONS. ENVIRONMENTAL CONTROLS SHALL BE USED AT LOCATIONS DESIGNATED IN THE PLANS AND/OR DESIGNATED BY THE ENGINEER.</p> <p>14 THE INFORMATION SHOWN ON THESE DRAWINGS CONCERNING TYPE AND LOCATION OF UNDERGROUND AND OTHER UTILITIES IS BASED ON AVAILABLE RECORDS AND SURVEYS BUT IS NOT GUARANTEED TO BE ACCURATE OR ALL INCLUSIVE. THE CONTRACTOR SHALL MAKE HIS OWN DETERMINATION AS TO THE TYPE AND LOCATION OF UTILITIES AS MAY BE NECESSARY TO AVOID DAMAGE THERETO AND IS RESPONSIBLE FOR COORDINATING UTILITY RELOCATION WITH PROJECT CONSTRUCTION. PRIOR TO ORDERING DRAINAGE STRUCTURES, THE CONTRACTOR SHALL DETERMINE IF DRAINAGE/UTILITY CONFLICTS EXIST. INFORMATION ON CONFLICTS IS TO BE SUBMITTED TO THE ENGINEER AS SOON AS POSSIBLE AFTER DISCOVERY FOR RESOLUTION. SUNSHINE STATE ONE CALL MUST BE NOTIFIED FOR LOCATES AT 1-800-432-4770.</p> <p>15 UTILITIES ARE TO BE ADJUSTED BY OTHERS OR AS DIRECTED BY THE ENGINEER.</p> | <p>16 THE CONTRACTOR SHALL NOTIFY ALL GAS UTILITY COMPANIES A MINIMUM OF TWO WORKING DAYS PRIOR TO EXCAVATION AS REQUIRED BY CHAPTER 553.851 AND 556.105 OF THE FLORIDA STATUTES.</p> <p>17 ALL DRAINAGE PIPES SHALL BE STEEL REINFORCED CONCRETE PIPE, CLASS III, UNLESS OTHERWISE NOTED.</p> <p>18 MEASUREMENT OF DRAINAGE PIPE FOR PAYMENT SHALL BE DETERMINED FROM ACTUAL LENGTHS INSTALLED.</p> <p>19 ALL MANHOLE COVERS SHALL INCLUDE THE ORANGE COUNTY LOGO AND BE IDENTIFIED AS "ORANGE COUNTY SANITARY", "ORANGE COUNTY STORM", OR "ORANGE COUNTY WATER", AS APPROPRIATE. (SEE STANDARD DRAWINGS AND DETAILS SHEET)</p> <p>20 ALL INLET/MANHOLE - PIPE JOINTS SHALL BE FILLED WITH NON-SHRINK GROUT, COVERED WITH AN ASPHALTIC MASTIC COATING, AND WRAPPED WITH A FILTER FABRIC MATERIAL PER SECTION 13.07 OF THE ORANGE COUNTY ROAD CONSTRUCTION SPECIFICATIONS.</p> <p>21 ALL CURB INLETS, DITCH BOTTOM INLETS, AND MANHOLES SHALL HAVE TRAFFIC BEARING FRAMES AND COVERS OR GRATES MEETING HS-20 LOADING REQUIREMENTS.</p> <p>22 DESIGN CHANGES OF PIPE INVERTS NOT EXCEEDING PLUS OR MINUS ONE FOOT WILL NOT BE CONSIDERED AS A BASIS FOR ADDITIONAL COMPENSATION FOR THE PERTINENT PIPE BID ITEM OR FOR MODIFICATION OF PRECAST STRUCTURES.</p> <p>23 ALL (P.R.M.'S) IRONS AND MONUMENTS SHOWN ON PLANS, OR FOUND, SHALL BE PRESERVED. THOSE SHOWN IN PROPOSED PAVEMENT SHALL BE PROTECTED WITH A CAST IRON VALVE BOX.</p> <p>24 ANY U.S.C. AND G.S. MONUMENTS WITHIN THE LIMITS OF CONSTRUCTION SHALL BE PROTECTED. IF IN DANGER OF DAMAGE, THE CONTRACTOR SHALL NOTIFY THE PROJECT ENGINEER, ORANGE COUNTY SURVEY SECTION AT 407-836-7940, AND BOTH SHALL NOTIFY:

 <div style="display: flex; justify-content: space-between; font-size: small;"> <div style="width: 45%;"> <p>STATE GEODETIC ADVISOR,
BUREAU OF SURVEY AND MAPPING
MS 105
3800 COMMONWEALTH BLVD.
TALLAHASSEE, FL 32399-3000
PHONE: (850) 245-2555
FAX: (850) 245-2645</p> </div> <div style="width: 45%;"> <p>ORANGE COUNTY SURVEYOR
ENGINEERING DIVISION,
PUBLIC WORKS DEPT.
4200 S. JOHN YOUNG PARKWAY
ORLANDO, FL 32839-9205
PHONE: (407) 836-7940
FAX: (407) 836-8024</p> </div> </div> </p> <p>25 PUBLIC LAND CORNERS WITHIN THE LIMITS OF CONSTRUCTION SHALL BE PROTECTED. IF A CORNER MONUMENT IS IN DANGER OF BEING DESTROYED OR DISTURBED, THE CONTRACTOR SHALL NOTIFY THE PROJECT ENGINEER AND THE COUNTY SURVEYOR, WITHOUT DELAY, BY TELEPHONE (407-836-7900). THE CONTRACTOR SHALL PROVIDE WRITTEN FOLLOW UP CONFIRMATION WITHIN 48 HOURS OF TELEPHONE NOTIFICATION.</p> <p>26 PRIOR TO BEGINNING ANY CONSTRUCTION, THE CONTRACTOR SHALL SUBMIT TO ORANGE COUNTY HIGHWAY CONSTRUCTION DIVISION A SET OF FIELD NOTES VERIFYING THE BENCHMARK ELEVATIONS AND THE REFERENCE POINT TIES SHOWN ON THE TITLE SHEET, SURVEY CONTROL SHEET, AND PLAN/PROFILE SHEETS, AND/OR A SET OF FIELD NOTES FOR ALL ADDITIONAL BENCHMARK AND REFERENCE POINT TIES PROPOSED TO BE USED IN CONSTRUCTING THE PROJECT WITH THEIR LOCATION, DESCRIPTION AND ELEVATION, BASED ON ORANGE COUNTY DATUM. ALL SUBMITTALS SHALL BE SIGNED AND SEALED BY A PROFESSIONAL LAND SURVEYOR REGISTERED IN THE STATE OF FLORIDA.</p> <p>27 WITHIN 21 CALENDAR DAYS AFTER NOTICE TO PROCEED, THE CONTRACTOR SHALL STAKE THE RIGHT-OF-WAY AT 100' INTERVALS AND AT RIGHT-OF-WAY BREAKS WITH STATIONING SHOWN ON THE STAKES. NO INVOICE FOR PAYMENT WILL BE PROCESSED UNTIL THE RIGHT-OF-WAY HAS BEEN STAKED TO THE SATISFACTION OF THE ENGINEER.</p> <p>28 EXISTING TRAFFIC SIGNS SHALL REMAIN IN PLACE OR BE RELOCATED AS NEEDED BY THE CONTRACTOR UNTIL THE NEW SIGNS ARE INSTALLED. ONCE THE NEW SIGNS HAVE BEEN INSTALLED, THE EXISTING SIGNS SHALL BE REMOVED BY THE CONTRACTOR AND DELIVERED TO THE ORANGE COUNTY SIGN SHOP AT 4200 SOUTH JOHN YOUNG PARKWAY.</p> | <p>29 ALL EXISTING DRAINAGE PIPE AND STRUCTURES AND UTILITIES WITHIN THE LIMITS OF CONSTRUCTION ARE TO REMAIN UNLESS OTHERWISE NOTED.</p> <p>30 INLET ELEVATIONS SHOWN IN THE PLANS REFER TO THE EDGE OF PAVEMENT AT THE CENTER OF CURB INLETS AND TOP OF THE GRATE FOR DITCH BOTTOM INLETS.</p> <p>31 ALL EXCAVATIONS SHALL BE REQUIRED TO CONFORM WITH THE PROVISIONS OF TITLE XXXIII, PART III OF CHAPTER 553, F.S., ALSO KNOWN AS THE "TRENCH SAFETY ACT", TO PROTECT EXISTING PAVEMENT, STRUCTURES, FOUNDATIONS, AND CONSTRUCTION PERSONNEL DURING CONSTRUCTION OF THE PROJECT.</p> <p>32 THE CONTRACTOR SHALL PROTECT EXISTING TREES THAT ARE TO REMAIN, INCLUDING MAINTAINING MINIMUM UNDISTURBED AREAS. WHEN NECESSARY TO CUT ROOTS OVER 1-1/2" DIA., THE CUT MUST BE CLEAN. TEMPORARILY COVER EXPOSED ROOTS WITH WET BURLAP TO PREVENT DRYING AND COVER WITH EARTH AS SOON AS POSSIBLE. INTERFERING BRANCHES MAY BE REMOVED AT THE DIRECTION OF A QUALIFIED TREE SURGEON. CONTRACTOR SHALL BE RESPONSIBLE FOR THE REPLACEMENT OF TREES DAMAGED BEYOND REPAIR WITH 3 TREES OF SIMILAR QUALITY AND SPECIES SIZED AT THE DIRECTION OF THE COUNTY. ALL TREES THAT ARE TO REMAIN, AS INDICATED IN THE PLANS, SHALL BE PROTECTED WITH A "TREE PROTECTION BARRICADE" PER FDOT INDEX NO. 544.</p> <p>33 EROSION AND SEDIMENT CONTROL MEASURES ARE TO BE PLACED IN ACCORDANCE WITH THE REQUIREMENTS OF THE FLORIDA EROSION AND SEDIMENT CONTROL MANUAL, LATEST EDITION, PRIOR TO OR AS THE FIRST STEP IN CONSTRUCTION. SILT FENCE, ROCK BAGS, TURBIDITY BARRIERS, SYNTHETIC BALES, AND ALL OTHER EROSION AND SEDIMENT CONTROL DEVICES MUST REMAIN IN PLACE AND IN GOOD CONDITION AT ALL LOCATIONS SHOWN IN PLANS OR AS REQUIRED UNTIL THE CONTRACT IS COMPLETED AND SOILS ARE STABILIZED AND VEGETATION HAS BEEN ESTABLISHED. MEASURES SHOWN ARE THE MINIMUM REQUIRED, AND THE CONTRACTOR WILL ENSURE THAT THERE IS NO DIRECT OR INDIRECT DISCHARGE OF CONSTRUCTION MATERIALS IN TURBID WATERS, WATERWAYS, OR OFFSITE AREAS.</p> <p>34 CONTRACTOR IS TO MAINTAIN UNINTERRUPTED ACCESS TO ALL DRIVEWAYS AND SIDESTREETS AT ALL TIMES AND TO NOTIFY PROPERTY OWNERS FIVE DAYS PRIOR TO STARTING CONSTRUCTION.</p> <p>35 ALL NEW SIDEWALKS AND CURB RAMPS ARE TO COMPLY WITH THE AMERICANS WITH DISABILITES ACT (ADA) DESIGN STANDARDS, "2010 ADA STANDARDS FOR ACCESSIBLE DESIGN".</p> |
|---|--|--|

REVISIONS				GTC Engineering Corporation		ORANGE COUNTY PUBLIC WORKS		GENERAL NOTES	SHEET NO.
DATE	DESCRIPTION	DATE	DESCRIPTION	98 South Semoran Blvd, Orlando, FL 32807 Phone Number - 407.380.0402		GTC PROJECT NO.	LITTLE EGYPT SIDEWALK IMPROVEMENTS		OCPW PROJECT NO.
				Certificate of Authorization Number 6758	Claude L. Cassagnol, P.E. P.E. Number 35490	FLO 23.02		0193	



REVISIONS			
DATE	DESCRIPTION	DATE	DESCRIPTION

GTC Engineering Corporation
 98 South Semoran Blvd, Orlando, FL 32807
 Phone Number - 407.380.0402
 Certificate of Authorization Number 6758
 Claude L. Cassagnol, P.E.
 P.E. Number 35490

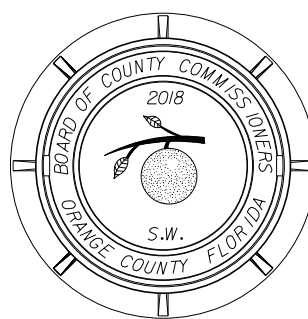
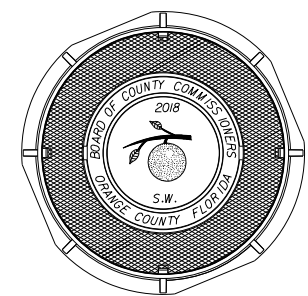
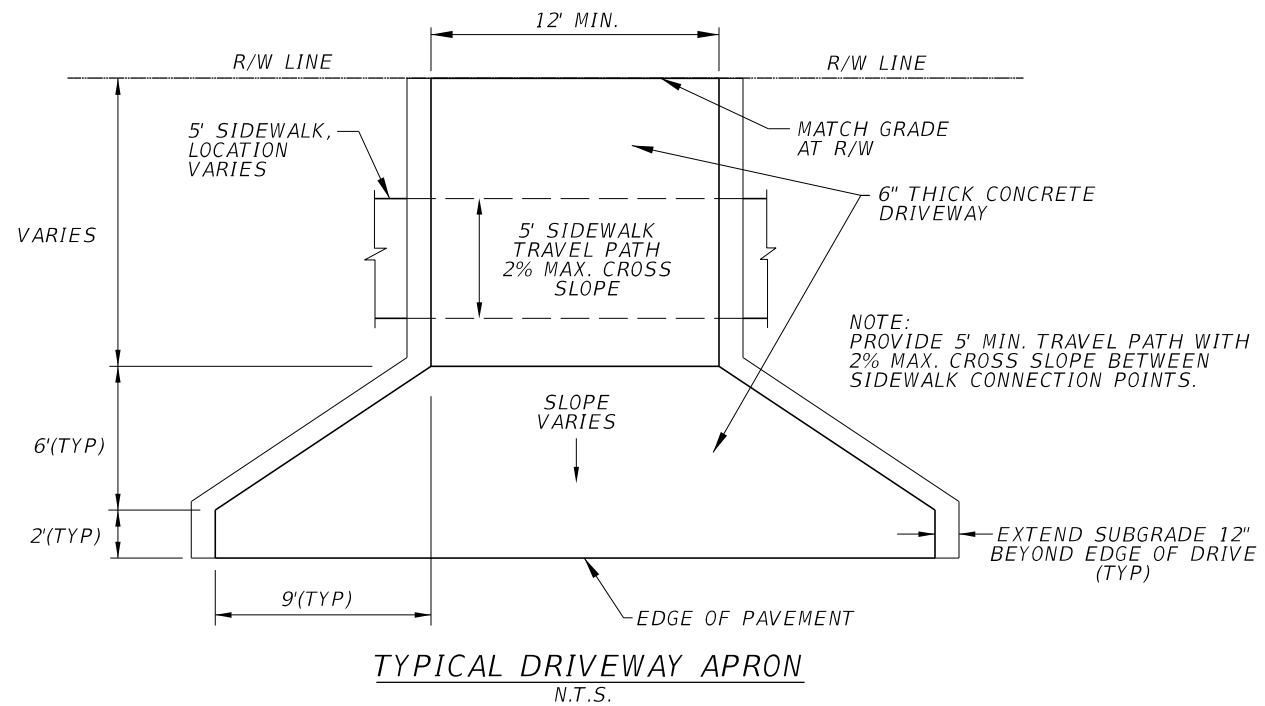
ORANGE COUNTY PUBLIC WORKS

GTC PROJECT NO.	LITTLE EGYPT SIDEWALK IMPROVEMENTS	OCPW PROJECT NO.
FLO 23.02		0193

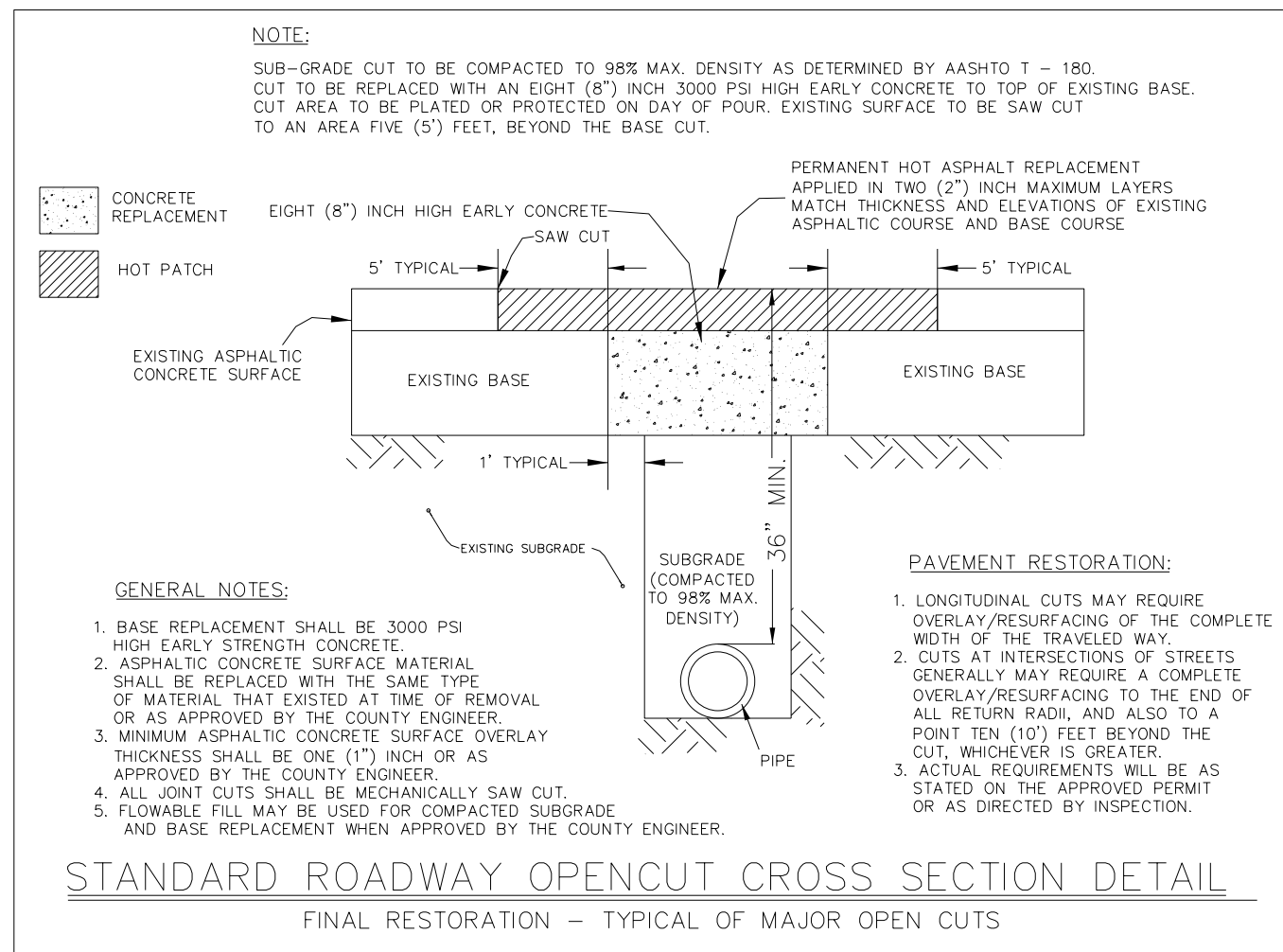
PROJECT LAYOUT

SHEET NO.
3

FILE: H:\Jobs\FLO23.02-LittleEgypt\roadway\PLAYRD01.DGN
 DATE: 2/16/2018 8:36:09 AM



STANDARD MANHOLE COVER
N.T.S.



REVISIONS			
DATE	DESCRIPTION	DATE	DESCRIPTION

GTC Engineering Corporation
98 South Semoran Blvd, Orlando, FL 32807
Phone Number - 407.380.0402
Certificate of Authorization Number 6758
Claude L. Cassagnol, P.E.
P.E. Number 35490

ORANGE COUNTY PUBLIC WORKS
GTC PROJECT NO. FLO 23.02
LITTLE EGYPT SIDEWALK IMPROVEMENTS
OCPW PROJECT NO. 0193

STANDARD DRAWINGS AND DETAILS

SHEET NO. 4

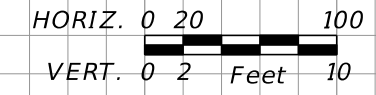
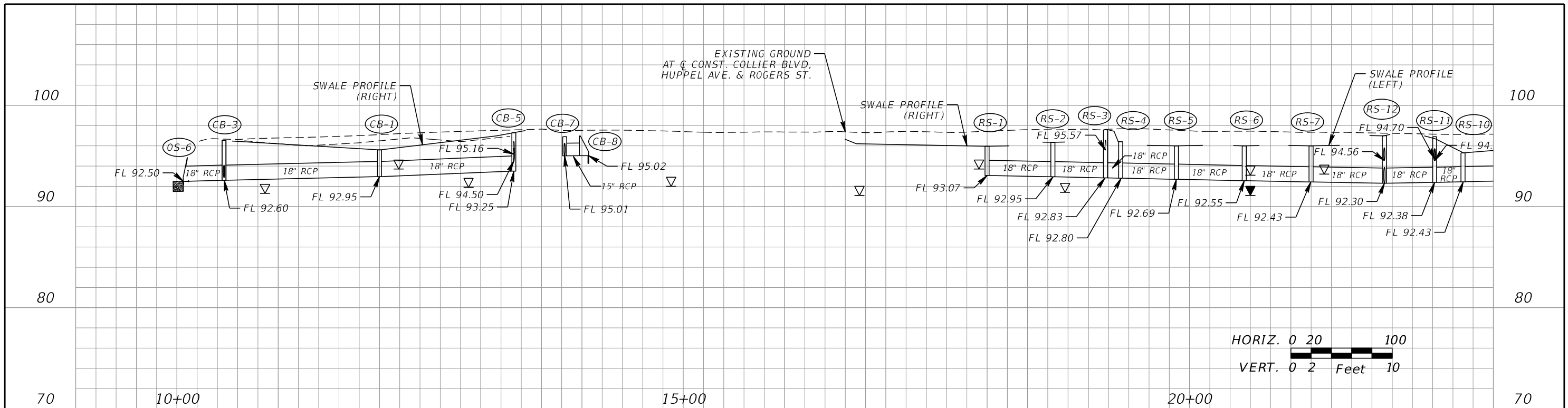
SUMMARY OF PAY ITEMS

ITEM NUMBER	DESCRIPTION	UNIT	QUANTITY TOTAL	
			PLANS	FINAL
101-1	MOBILIZATION	LS	1	
102-1	MAINTENANCE OF TRAFFIC	LS	1	
104-14	PREVENTION, CONTROL AND ABATEMENT OF EROSION AND WATER POLLUTION	LS	1	
110-1-1	CLEARING & GRUBBING	LS	1	
120-4	SUBSOIL EXCAVATION	CY	26	
120-9	EXCAVATION, EMBANKMENT AND GRADING	LS	1	
400-1-2	CONCRETE CLASS 1 (STRAIGHT ENDWALL) (INCL. REINF. STEEL)	CY	2	
425-1-521	INLETS, DITCH BOTTOM, TYPE C, <10'	EA	37	
425-1-541	INLETS, DITCH BOTTOM, TYPE D, <10'	EA	4	
425-2-41	MANHOLES, P-7, <10'	EA	8	
425-2-61	MANHOLES, P-8, <10'	EA	1	
425-2-71	MANHOLES, J-7, <10'	EA	3	
430-94-1	DESILTING PIPE, 0 - 24" (INCLUDES VIDEO)	LF	1,025	
430-175-115	PIPE CULVERT, STEEL REINFORCED CONCRETE, CLASS III, ROUND, 15"	LF	27	
430-175-118	PIPE CULVERT, STEEL REINFORCED CONCRETE, CLASS III, ROUND, 18"	LF	2,511	
430-175-124	PIPE CULVERT, STEEL REINFORCED CONCRETE, CLASS III, ROUND, 24"	LF	289	
430-175-215	PIPE CULVERT, STEEL REINFORCED CONCRETE, CLASS III, ELLIPTICAL, 12"x18"	LF	11	
430-175-218	PIPE CULVERT, STEEL REINFORCED CONCRETE, CLASS III, ELLIPTICAL, 14"x23"	LF	19	
430-175-224	PIPE CULVERT, STEEL REINFORCED CONCRETE, CLASS III, ELLIPTICAL, 19"x30"	LF	348	
430-610-123	U-ENDWALL, STD 261, 1:4 SLOPE, 15" PIPE	EA	1	
430-984-123	MITERED END SECTION, 15" SD	EA	1	
430-984-125	MITERED END SECTION, 18" SD	EA	6	
430-984-129	MITERED END SECTION, 24", SD	EA	1	
430-984-623	MITERED END SECTION, 12x18", SD	EA	1	
430-984-625	MITERED END SECTION, 14x23", SD	EA	1	
430-984-629	MITERED END SECTION, 19x30", SD	EA	1	
515-2-211	PEDESTRIAN/BICYCLE RAILING (42" PICKET RAIL) (STEEL) (GALVANIZED)	LF	86	
520-1-10	CONCRETE CURB & GUTTER (TYPE F)	LF	283	
522-1	SIDEWALK CONCRETE, 4" THICK	SY	2,533	
522-2	SIDEWALK CONCRETE, 6" THICK (INCLUDES DRIVEWAYS)	SY	1,112	
524-1-2	CONCRETE DITCH PAVEMENT, NON REINFORCED, 4"	SY	5	
530-3-3	RIPRAP - RUBBLE, BANK AND SHORE	TN	32	
550-10-240	FENCING, TYPE B. 8.0', STANDARD	LF	40	
570-1-2	PERFORMANCE TURF (SOD)	SY	7,851	
700-1-50	SINGLE POST SIGN, RELOCATE	EA	3	
711-11-123	THERMOPLASTIC, WHITE, SOLID FOR CROSSWALK AND ROUNDABOUT, 12"	LF	674	
711-11-125	THERMOPLASTIC, WHITE, SOLID FOR STOP LINE AND CROSSWALK, 24"	LF	533	
900-1	AS-BUILT PLANS	LS	1	
900-2	INDEMNIFICATION	LS	1	
900-3	GROUNDWATER TREATMENT & DISPOSAL	DA	90	

PAY ITEM FOOTNOTES

- 101-1 INCLUDES THE COST OF STAKING THE RIGHT-OF-WAY PER NOTE NO. 26 ON THE GENERAL NOTES SHEET.
- 102-1 INCLUDES ALL ITEMS OF MAINTENANCE OF TRAFFIC INCLUDING, BUT NOT LIMITED TO, THE DESIGN OF THE MAINTENANCE OF TRAFFIC PLAN BY THE CONTRACTOR AND APPROVAL OF THE PLANS BY ORANGE COUNTY TRAFFIC ENGINEERING AND HIGHWAY CONSTRUCTION. ALSO INCLUDES ALL TEMPORARY STRIPING, REMOVAL OF EXISTING AND TEMPORARY STRIPING VIA HYDRO BLASTING, SIGNING, FLAGGERS, ETC. REQUIRED TO MAINTAIN TRAFFIC DURING CONSTRUCTION IN ACCORDANCE WITH THE MUTCD AND THE FDOT ROADWAY AND DESIGN STANDARDS, 2017 EDITION. COST OF RELOCATION, MAINTENANCE, REMOVAL AND DELIVERY OF EXISTING TRAFFIC SIGNS SHALL BE INCLUDED. ATTENTION IS DIRECTED TO THE 600 SERIES INDEX NUMBERS. NOTE THAT THE MAINTENANCE OF TRAFFIC PLAN SHOWN IN THE CONSTRUCTION PLANS IS FOR INFORMATION ONLY, FINAL PLAN TO BE SUBMITTED TO AND APPROVED BY THE COUNTY. THE MAINTENANCE OF TRAFFIC PLAN DONE BY THE CONTRACTOR SHALL BE SIGNED AND SEALED BY A PROFESSIONAL ENGINEER REGISTERED IN THE STATE OF FLORIDA.
- 104-14 INCLUDES THE COST OF ALL ITEMS REQUIRED FOR EROSION CONTROL INCLUDING, BUT NOT LIMITED TO SYNTHETIC BALES, TURBIDITY BARRIERS, SILT FENCES AND TEMPORARY GRASSING AS SHOWN IN THE PLANS OR AS DIRECTED BY THE ENGINEER. THE CONTRACTOR SHALL PERFORM HIS WORK IN ACCORDANCE WITH REQUIREMENTS OF THE VARIOUS PERMITS INCLUDED IN THE BID SPECIFICATIONS. ENVIRONMENTAL CONTROLS SHALL BE USED AT LOCATIONS DESIGNATED IN THE PLANS AND/OR DESIGNATED BY THE ENGINEER.
- 110-1-1 INCLUDES, BUT IS NOT LIMITED TO, THE COST OF REMOVAL AND DISPOSAL OF CONCRETE CURBS, DRIVEWAYS, STRUCTURES, WALLS, BRICK WALLS, VARIOUS TYPES OF FENCES, CAPPING WELLS, REMOVAL AND DISPOSAL OF SEPTIC TANKS AND DRAIN FIELDS, UNDERGROUND STORAGE TANKS, PAVEMENT, BASE, RELOCATION/REPLACEMENT OF MAILBOXES PER FDOT INDEX 532, TREE REMOVAL, TOP SOIL TREATMENT AND TRIMMING OF TREES, SHRUBS AND ROOTS AS REQUIRED TO CONSTRUCT THE PROJECT. ALSO INCLUDES THE COST FOR SAWCUTTING EXISTING DRIVEWAYS, PAVEMENT OR CONCRETE, TREE PROTECTION, MAINTAINING UNDISTURBED AREAS, BARRICADES AND REMOVAL OR PLUGGING/GROUTING OF EXISTING PIPES. REMOVAL OF PERSONAL PROPERTY WITHIN RIGHT-OF-WAY AND NOT RELOCATED BY THE PROPERTY OWNER SHALL ALSO BE INCLUDED.
- 430-175-XXX INCLUDES THE COST OF CONCRETE COLLARS PER FDOT INDEX 280. ALSO INCLUDES THE COST OF SAWCUTS, PAVEMENT, BASE & SUBGRADE REPLACEMENT PER THE OPEN CUT DETAIL ON THE STANDARD DRAWINGS AND DETAILS SHEET. MEASUREMENT OF DRAINAGE PIPE FOR PAYMENT SHALL BE DETERMINED FROM ACTUAL LENGTHS INSTALLED. INCLUDES THE COST OF CORING AND GROUTING FOR CONNECTING 18" RCP INTO EXISTING MANHOLE AT STA. 77+35 RT ALONG COLLEGE DRIVE.
- 522-1 INCLUDES THE COST OF CURB RAMPS AND DETECTABLE WARNING SURFACES PER FDOT INDEX 304.
- 550-10-240 INCLUDES THE COST OF REMOVING EXISTING FENCE AND CONNECTING TO EXISTING FENCE.
- 570-1-2 INCLUDES THE COST OF SOD (MATCH EXISTING), TOP SOIL TREATMENT PEGGING THE SOD, FERTILIZER AND WATER AS REQUIRED FOR ESTABLISHMENT OF PERMANENT SODDING. ALSO INCLUDES THE COST OF MOWING UNTIL FINAL PROJECT ACCEPTANCE BY THE COUNTY. SOD FOR SWALES SHALL BE SAND BASED.

REVISIONS				GTC Engineering Corporation 98 South Semoran Blvd, Orlando, FL 32807 Phone Number - 407.380.0402	ORANGE COUNTY PUBLIC WORKS		SHEET NO. 5
DATE	DESCRIPTION	DATE	DESCRIPTION		GTC PROJECT NO.	LITTLE EGYPT SIDEWALK IMPROVEMENTS	
				Certificate of Authorization Number 6758	FLO 23.02	0193	
				Claude L. Cassagnol, P.E. P.E. Number 35490			



- EXISTING DRAINAGE STRUCTURES**
- ① MITERED END SECTION INV EL = 95.18'
 - ② MITERED END SECTION INV EL = 95.05'
 - ③ MITERED END SECTION INV EL = 95.07'
 - ④ MITERED END SECTION INV EL = 95.01'
 - ⑤ PIPE END INV EL = 95.61'
 - ⑥ MITERED END SECTION INV EL = 95.49'

REVISIONS			
DATE	DESCRIPTION	DATE	DESCRIPTION

GTC Engineering Corporation 98 South Semoran Blvd, Orlando, FL 32807 Phone Number - 407.380.0402 Certificate of Authorization Number 6758 Claude L. Cassagnol, P.E. P.E. Number 35490		ORANGE COUNTY PUBLIC WORKS GTC PROJECT NO. FLO 23.02 LITTLE EGYPT SIDEWALK IMPROVEMENTS OCPW PROJECT NO. 0193		COLLIER BLVD., HUPPEL AVE. & ROGERS ST. DRAINAGE MAP SHEET NO. 6	
---	--	---	--	--	--

FILE: H:\Jobs\FLO23.02-LittleEgypt\drainage\DRMPRD01.dgn
 DATE: 2/16/2018 8:36:53 AM