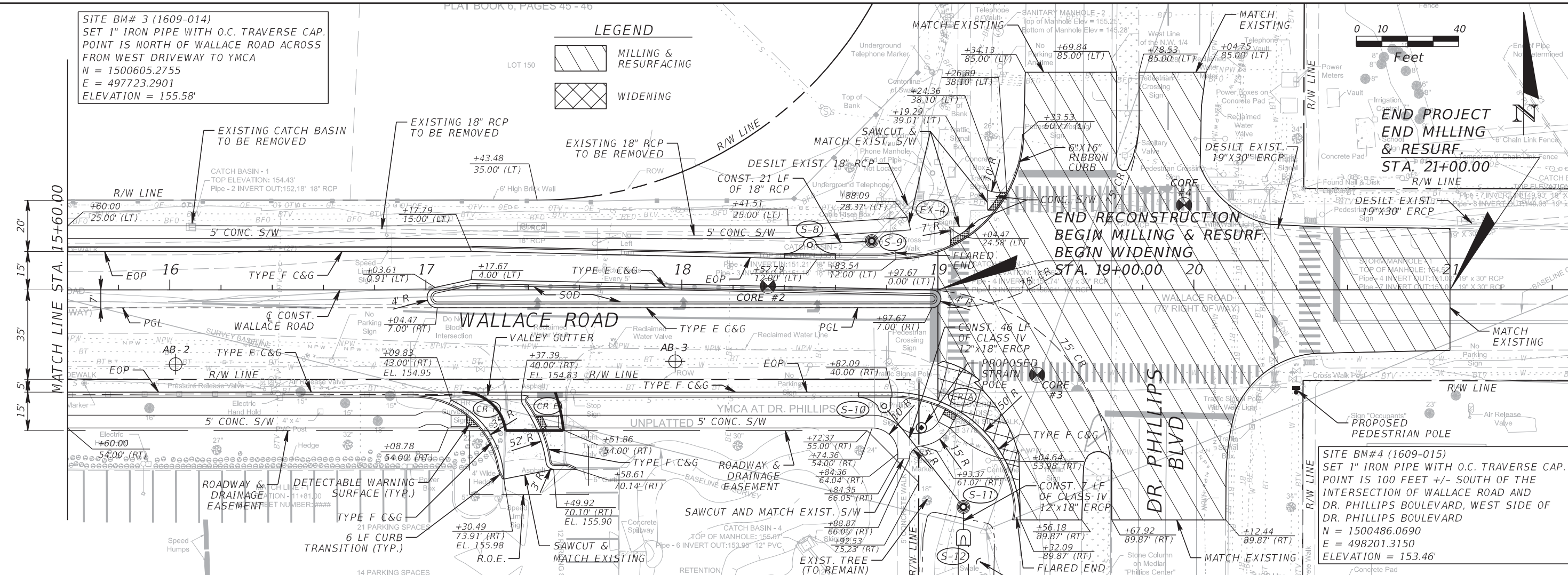


SITE BM# 3 (1609-014)  
 SET 1" IRON PIPE WITH O.C. TRAVERSE CAP.  
 POINT IS NORTH OF WALLACE ROAD ACROSS  
 FROM WEST DRIVEWAY TO YMCA  
 N = 1500605.2755  
 E = 497723.2901  
 ELEVATION = 155.58'

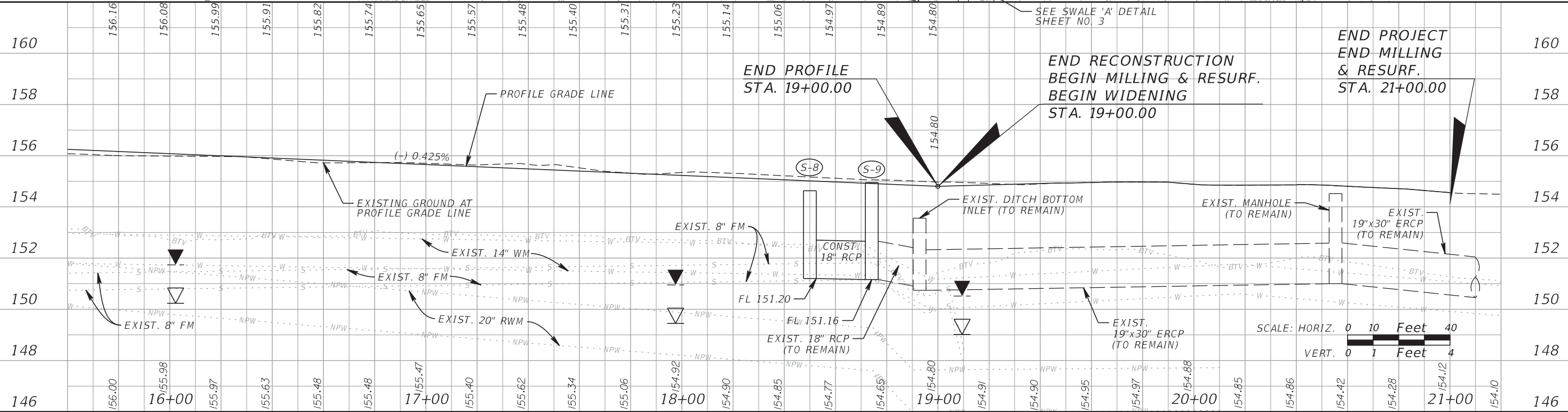
**LEGEND**

MILLING & RESURFACING

WIDENING



SITE BM#4 (1609-015)  
 SET 1" IRON PIPE WITH O.C. TRAVERSE CAP.  
 POINT IS 100 FEET +/- SOUTH OF THE  
 INTERSECTION OF WALLACE ROAD AND  
 DR. PHILLIPS BOULEVARD, WEST SIDE OF  
 DR. PHILLIPS BOULEVARD  
 N = 1500486.0690  
 E = 498201.3150  
 ELEVATION = 153.46'



REVISIONS			
DATE	DESCRIPTION	DATE	DESCRIPTION

**GTC Engineering Corporation**  
 98 South Semoran Blvd, Orlando, FL 32807  
 Phone Number - 407.380.0402

**ORANGE COUNTY PUBLIC WORKS**

GTC PROJECT NO. FLO 20.05  
 WALLACE ROAD INTERSECTION IMPROVEMENTS

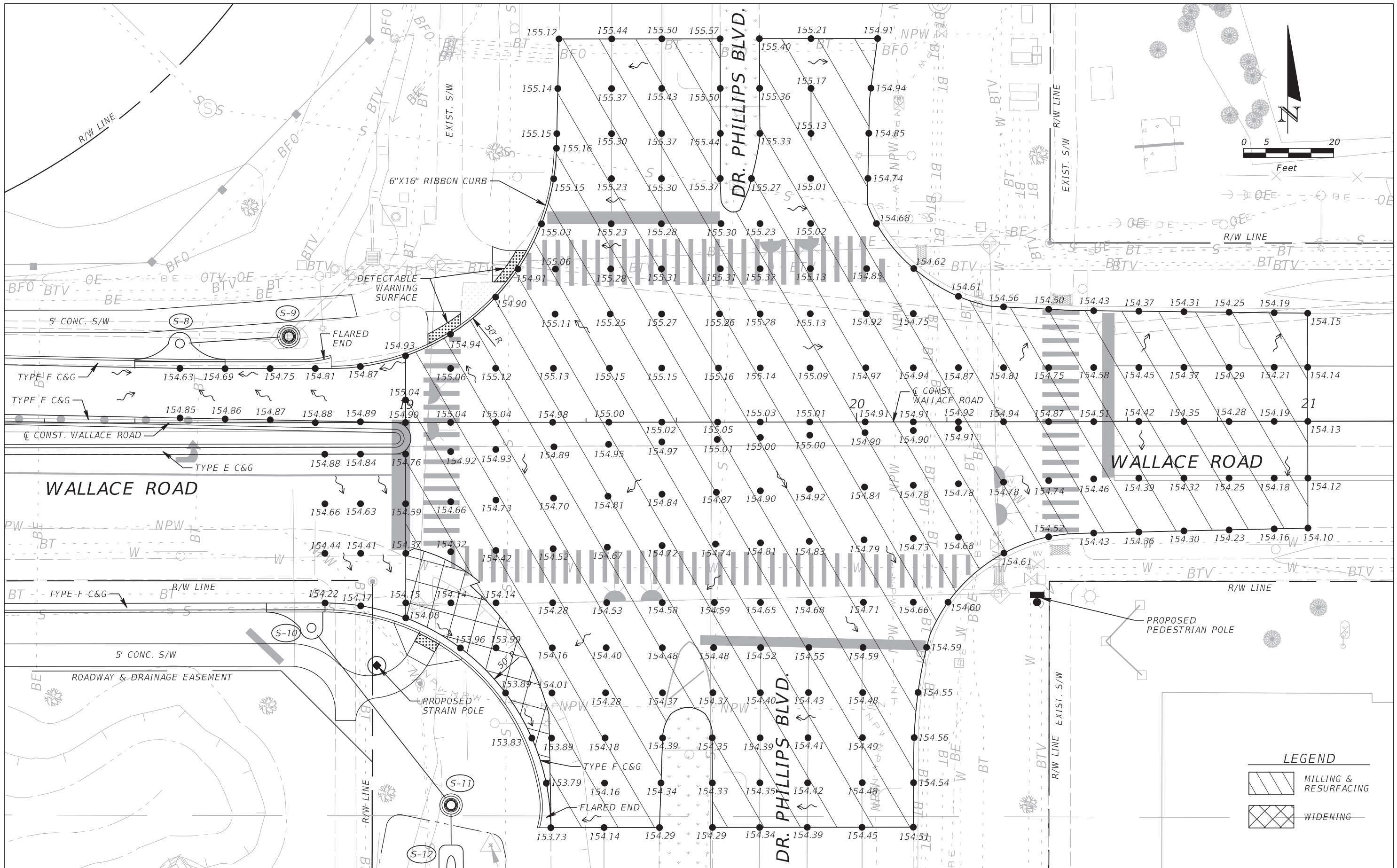
OCPW PROJECT NO. 2722

**PLAN AND PROFILE**  
 STA. 15+60.00 TO STA. 21+00.00

SHEET NO. 11

FILE: H:\Jobs\FLO20.05-Wallace\roadway\PLPRD02.dgn  
 DATE: 8/11/2017 11:56:49 AM





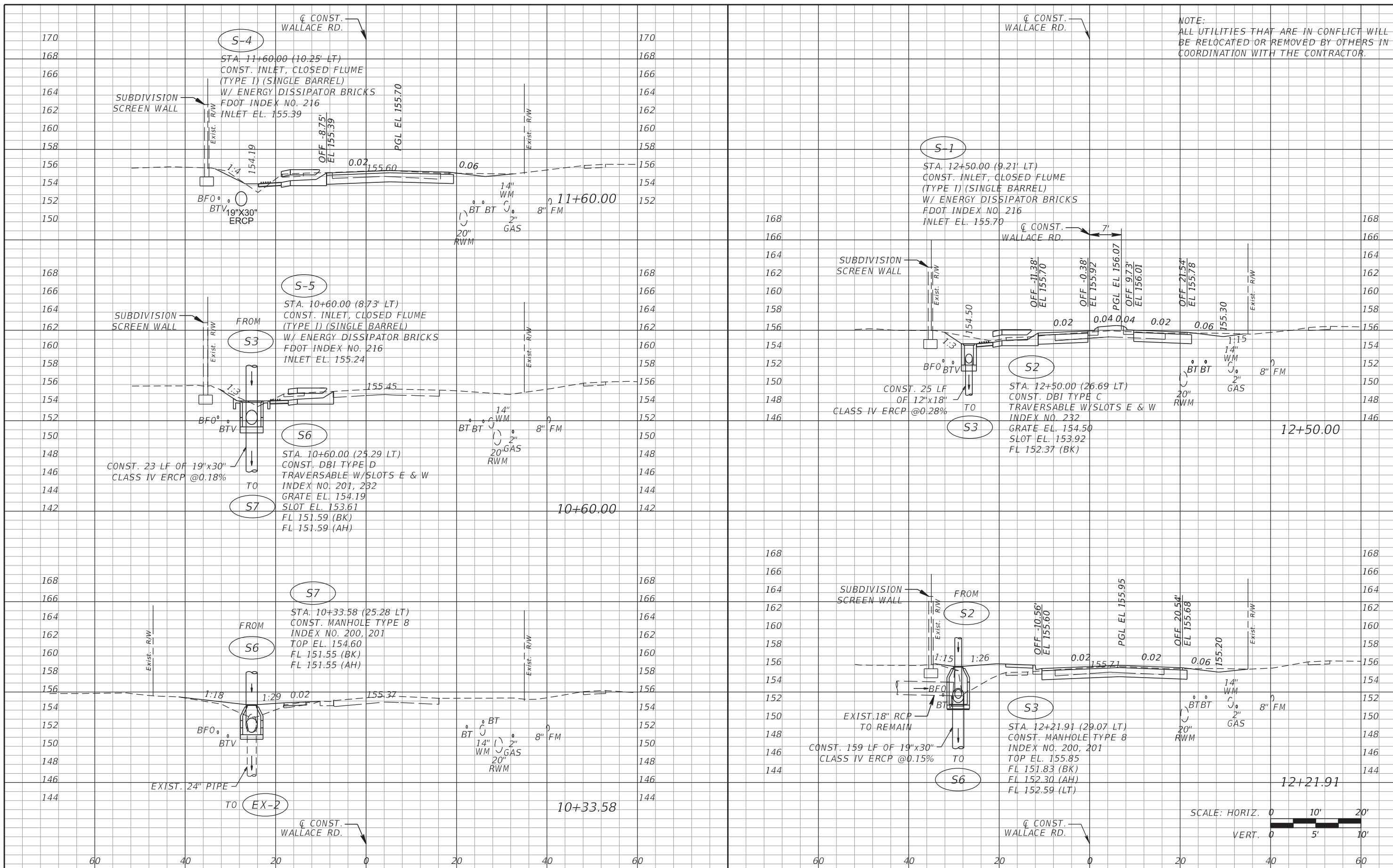
REVISIONS			
DATE	DESCRIPTION	DATE	DESCRIPTION

**GTC Engineering Corporation**  
 98 South Semoran Blvd, Orlando, FL 32807  
 Phone Number - 407.380.0402  
 Certificate of Authorization Number 6758  
 Claude L. Cassagnol, P.E.  
 P.E. Number 35490

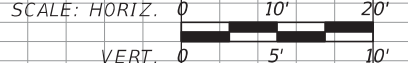
**ORANGE COUNTY PUBLIC WORKS**  
 GTC PROJECT NO. FLO 20.05  
 WALLACE ROAD INTERSECTION IMPROVEMENTS  
 OCPW PROJECT NO. 2722

**INTERSECTION DETAILS**  
 SHEET NO. 12

FILE: H:\Jobs\FLO20.05-Wallace\roadway\INTDRD01.DGN  
 DATE: 8/11/2017 11:56:50 AM



NOTE:  
ALL UTILITIES THAT ARE IN CONFLICT WILL  
BE RELOCATED OR REMOVED BY OTHERS IN  
COORDINATION WITH THE CONTRACTOR.

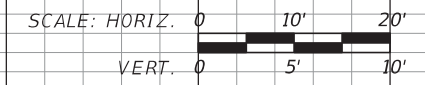
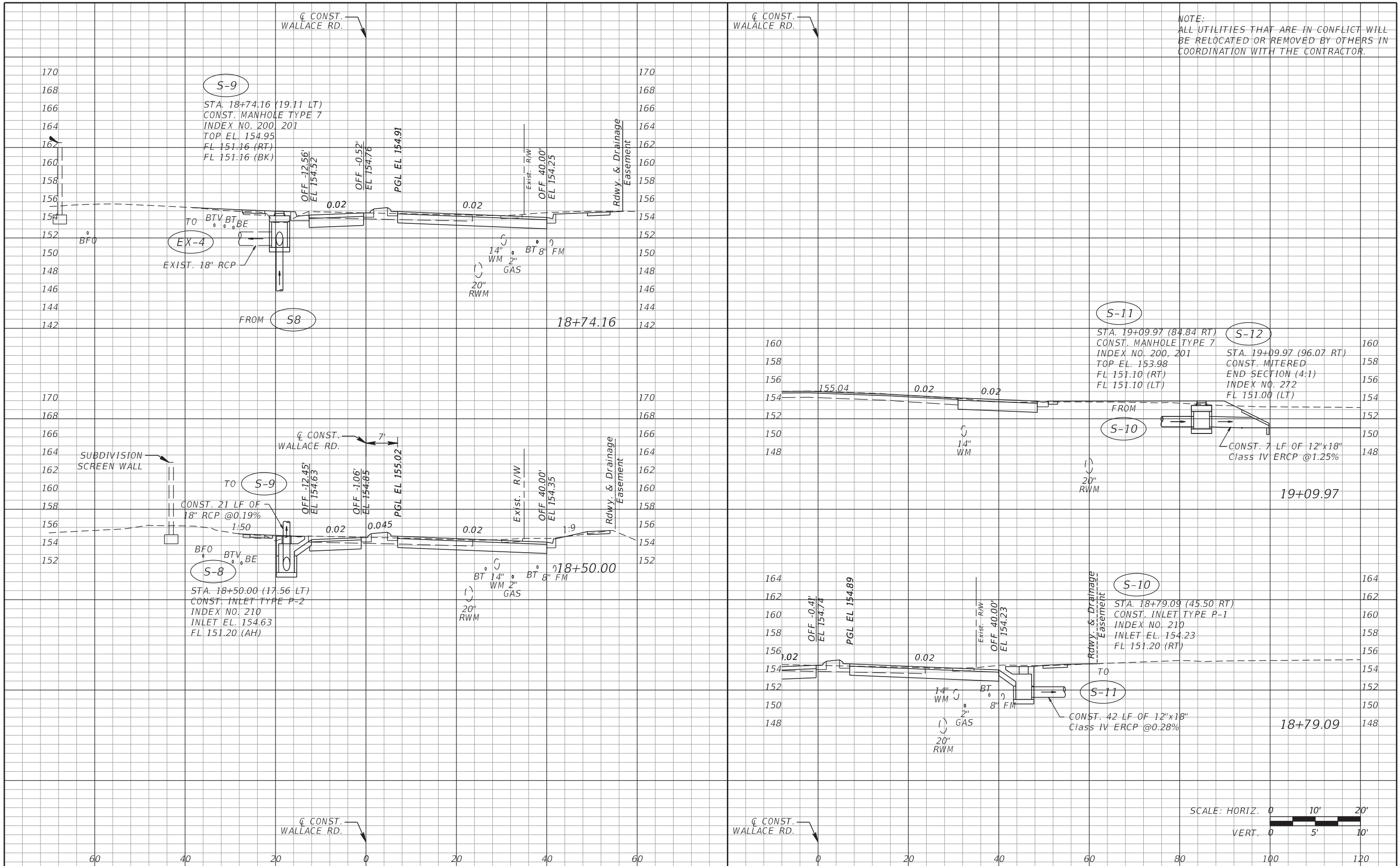


REVISIONS			
DATE	DESCRIPTION	DATE	DESCRIPTION

<b>GTC Engineering Corporation</b> 98 South Semoran Blvd, Orlando, FL 32807 Phone Number - 407.380.0402 Certificate of Authorization Number 6758 Claude L. Cassagnol, P.E. P.E. Number 35490		<b>ORANGE COUNTY PUBLIC WORKS</b> GTC PROJECT NO. FLO 20.05 WALLACE ROAD INTERSECTION IMPROVEMENTS OCPW PROJECT NO. 2722		<b>DRAINAGE STRUCTURE SHEET</b> SHEET NO. 13	
---	--	---	--	---	--

FILE: H:\Jobs\FLO20.05-Wallace\drainage\DRXSRD01.DGN  
 DATE: 3/10/2017 9:51:23 AM

NOTE:  
ALL UTILITIES THAT ARE IN CONFLICT WILL  
BE RELOCATED OR REMOVED BY OTHERS IN  
COORDINATION WITH THE CONTRACTOR.



REVISIONS			
DATE	DESCRIPTION	DATE	DESCRIPTION

<b>GTC Engineering Corporation</b> 98 South Semoran Blvd, Orlando, FL 32807 Phone Number - 407.380.0402 Certificate of Authorization Number 6758 Claude L. Cassagnol, P.E. P.E. Number 35490		<b>ORANGE COUNTY PUBLIC WORKS</b> GTC PROJECT NO. FLO 20.05 WALLACE ROAD INTERSECTION IMPROVEMENTS OCPW PROJECT NO. 2722		<b>DRAINAGE STRUCTURE SHEET</b> SHEET NO. 14	
---	--	---	--	---	--

FILE: H:\Jobs\FLO20.05-Wallace\Drainage\DRXSRD01.DGN  
 DATE: 3/10/2017 9:51:24 AM



NES PROJECT No.: R13003.1  
ROADWAY: WALLACE ROAD  
SUBMITTED BY: NES

# NADIC ENGINEERING SERVICES, INC

## WALLACE ROAD SOIL SURVEY

### REPORT OF TESTS

SECTION: 25 & 26  
TOWNSHIP: 21 SOUTH  
RANGE: 29 EAST

SURVEYED BY: NES  
SURVEY BEGINS: 10+00  
SURVEY ENDS: 19+00



DATE SURVEYED: MAY, 2014  
DATE REPORTED: MAY, 2014

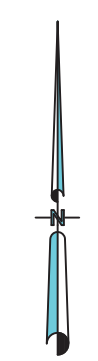
STRATUM NO.	No. OF TESTS	ORGANIC CONTENT	No. OF TESTS	MOISTURE CONTENT	No. OF TESTS	SIEVE ANALYSIS RESULTS (% PASS)					ATTERBERG LIMITS (%)			DESCRIPTION	No. OF TESTS	pH	CORROSION TEST RESULTS			SUBSTRUCTURE ENVIRONMENTAL CLASSIFICATION			
		% ORGANIC		% MOISTURE CONTENT		% PASSING 10 MESH	% PASSING 40 MESH	% PASSING 60 MESH	% PASSING 100 MESH	% PASSING 200 MESH	No. OF TESTS	LIQUID LIMIT	PLASTIC LIMIT				AASHTO GROUP	RESISTIVITY OHM-CM	CHLORIDES PPM	SULFATE PPM	CONCRETE	STEEL	
1	2	2-3	4	3-26	4 (FULL) 2 (-200)	100	88-91	44-50	6-8	2-8	-	-	-	A-3	DARK BROWN TO LIGHT BROWN TO GRAY FINE SAND WITH SILT, OCCASIONAL TRACE ORGANIC	-	-	-	-	-	-	-	-

NOTES:

- STRATA BOUNDRIES ARE APPROXIMATE AND REPRESENT SOIL STRATA AT EACH TEST HOLE LOCATION ONLY. ANY STRATUM CONNECTING LINES SHOWN ARE FOR ESTIMATING EARTHWORK ONLY AND DO NOT INDICATE ACTUAL STRATUM LIMITS. SUBSURFACE VARIATIONS BETWEEN BORINGS SHOULD BE ANTICIPATED AS INDICATED IN FDOT SECTION 2-4. FOR FURTHER DETAILS SEE FDOT SECTION 120-3.
- SOIL PARAMETER NOT TESTED DENOTED AS "-" ABOVE.
- ▼ INDICATES WATER TABLE WHERE ENCOUNTERED AT THE TIME OF SURVEY.  
⊘ INDICATES ESTIMATED SEASONAL HIGH WATER LEVEL.
- REMOVAL OF PLASTIC AND HIGH PLASTIC MATERIAL OCCURRING WITHIN THE ROADWAY SHALL BE ACCOMPLISHED IN ACCORDANCE WITH INDEX No. 500 UNLESS OTHERWISE STATED IN THE PLANS. THE MATERIAL UTILIZED IN EMBANKMENT CONSTRUCTION SHALL BE IN ACCORDANCE WITH FDOT STANDARD INDEX No. 505.
- STRATA 1 SHALL BE TREATED AS SELECT (S) MATERIALS PER FDOT INDEX No. 505.

VERIFICATION CHECKER: [Empty] Date: 01/15/15  
GNN [Empty] JW [Empty] GNN [Empty]  
GREEN Check or Circle & Remark Increased  
REMARK INCORPORATION (Blue Highlighter)  
CHECKED Corrected (Green Change (Red)  
Checked Corrected (Yellow Change (Red)  
CONCURRENCE, ORIGINATOR (Red Check)  
CHANGE INCORPORATION (Blue Highlighter)  
ORIGINATOR: MAA Date: 05/29/14  
QC/QA REVIEW

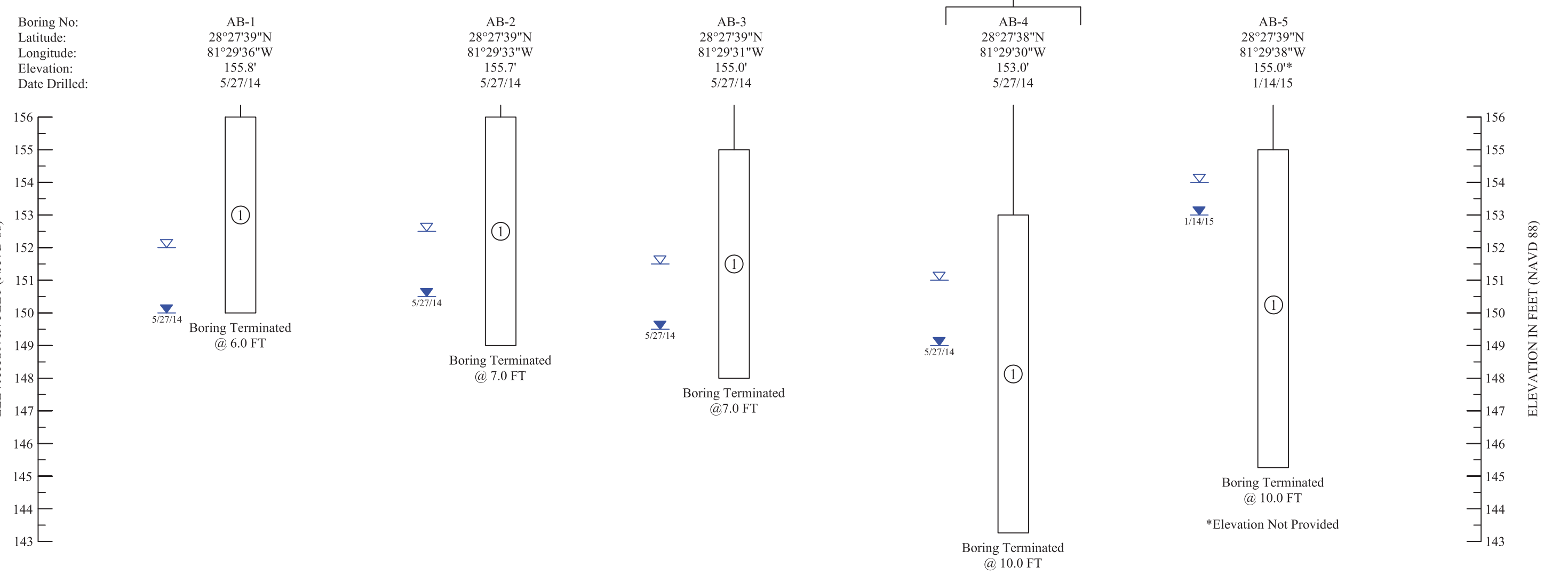
ORANGE COUNTY	REVISIONS		 <b>Civil Geotechnical Environmental Consulting Engineering</b>	ENGINEER OF RECORD: <b>NES</b> NADIC ENGINEERING SERVICES, INC. 601 N. HART BLVD. ORLANDO, FL 32818 CERTIFICATE OF AUTHORIZATION NO. 00008214 DR. GODWIN N. NNADI P.E. NO. 50637	SEAL:		ORANGE COUNTY PUBLIC WORKS		SHEET TITLE: ROADWAY SOIL SURVEY	Project No.
	ROAD NAME	COUNTY					PROJECT NAME: WALLACE ROAD IMPROVEMENTS AT THE INTERSECTION OF DR. PHILIPS BOULEVARD	Sheet No. <b>15</b>		
	Wallace Road	ORANGE								



- LEGEND**
- ① Light brown to dark brown to gray fine SAND with silt, occasional trace organic
  - ⊗ Approximate Pavement Coring Location
  - ⊕ Approximate Auger Boring Location
  - ▽ Groundwater level on date shown
  - ▽ Estimated seasonal high groundwater level

\*\*NOT TO SCALE\*\*

STORMWATER BORING



Z:\Roadways\Gnnadi\Wallace Rd Improvements\Working File\Acad

USGS QUAD MAP: LAKE JESSAMINE, FLA  
SECTION: 25 & 26  
TOWNSHIP: 21 South  
RANGE: 29 East  
Photo Issued: 1960 (Photo Revised 1980)

REVISIONS

DATE	BY	DESCRIPTION	DATE	BY	DESCRIPTION

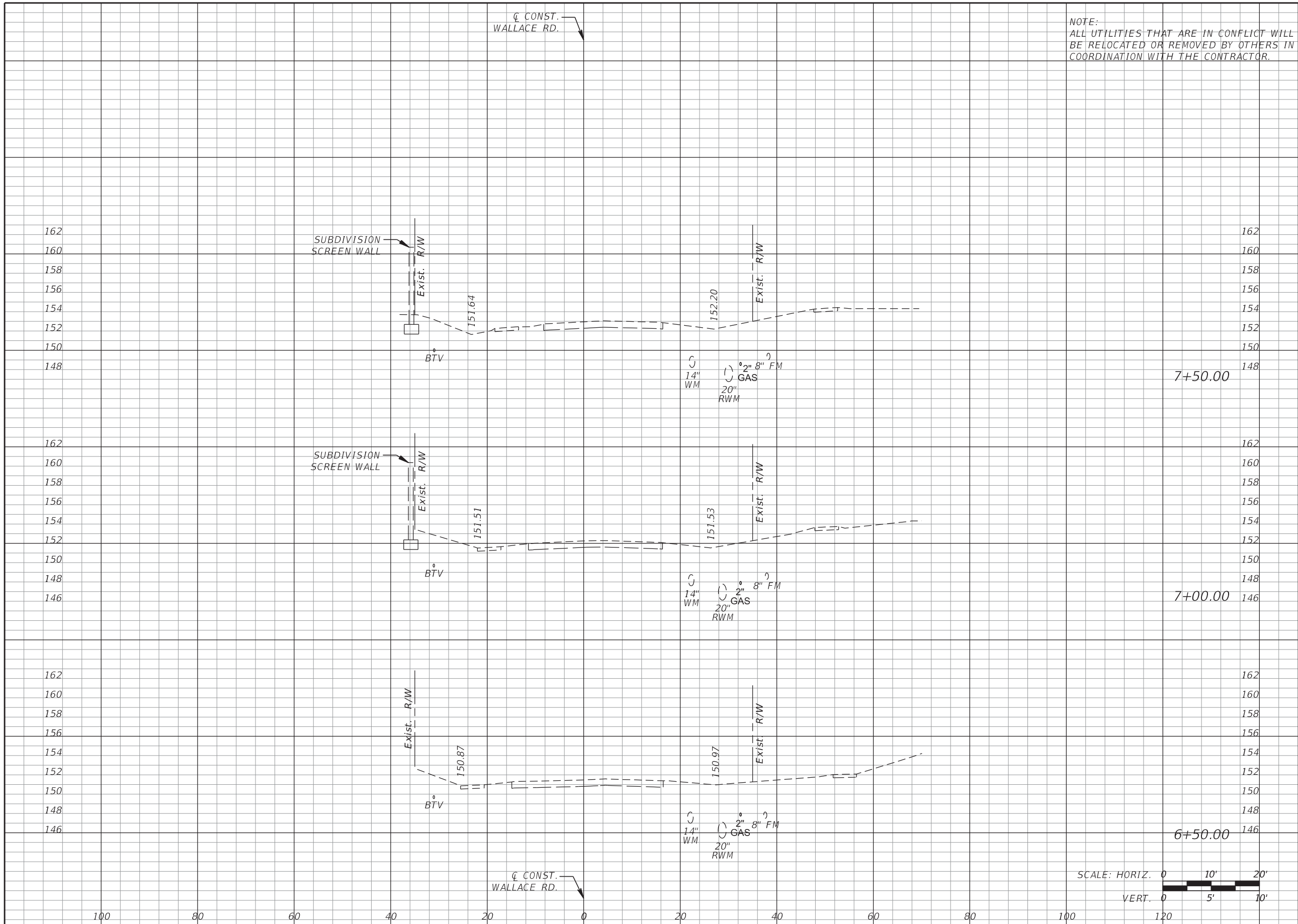
NAMES	DATES
Drawn by: MA	1/19/15
Checked by: GNN	1/14/15
Designed by: N/A	N/A
Checked by: N/A	N/A
Approved by: GNN	

ENGINEER OF RECORD:  
**NES**  
NADIC ENGINEERING SERVICES, INC.  
601 N. HART BLVD.  
ORLANDO, FL 32818  
CERTIFICATE OF AUTHORIZATION NO. 00008214  
DR. GODWIN N. NNADI P.E. NO. 50637



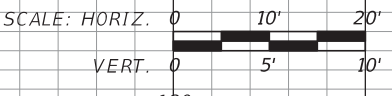
**ORANGE COUNTY PUBLIC WORKS DEPARTMENT**  
COUNTY: ORANGE  
PROJECT NO.: -

SHEET TITLE:  
**REPORT OF AUGER BORINGS FOR TURNING LANE**  
PROJECT NAME:  
**WALLACE ROAD IMPROVEMENTS AT THE INTERSECTION OF DR. PHILLIPS BOULEVARD**  
SHEET NO.: **16**



NOTE:  
ALL UTILITIES THAT ARE IN CONFLICT WILL  
BE RELOCATED OR REMOVED BY OTHERS IN  
COORDINATION WITH THE CONTRACTOR.

Regular		Exc.		Embankment	
A	V	A	V	A	V



REVISIONS			
DATE	DESCRIPTION	DATE	DESCRIPTION

**GTC Engineering Corporation**  
98 South Semoran Blvd, Orlando, FL 32807  
Phone Number - 407.380.0402

**ORANGE COUNTY PUBLIC WORKS**

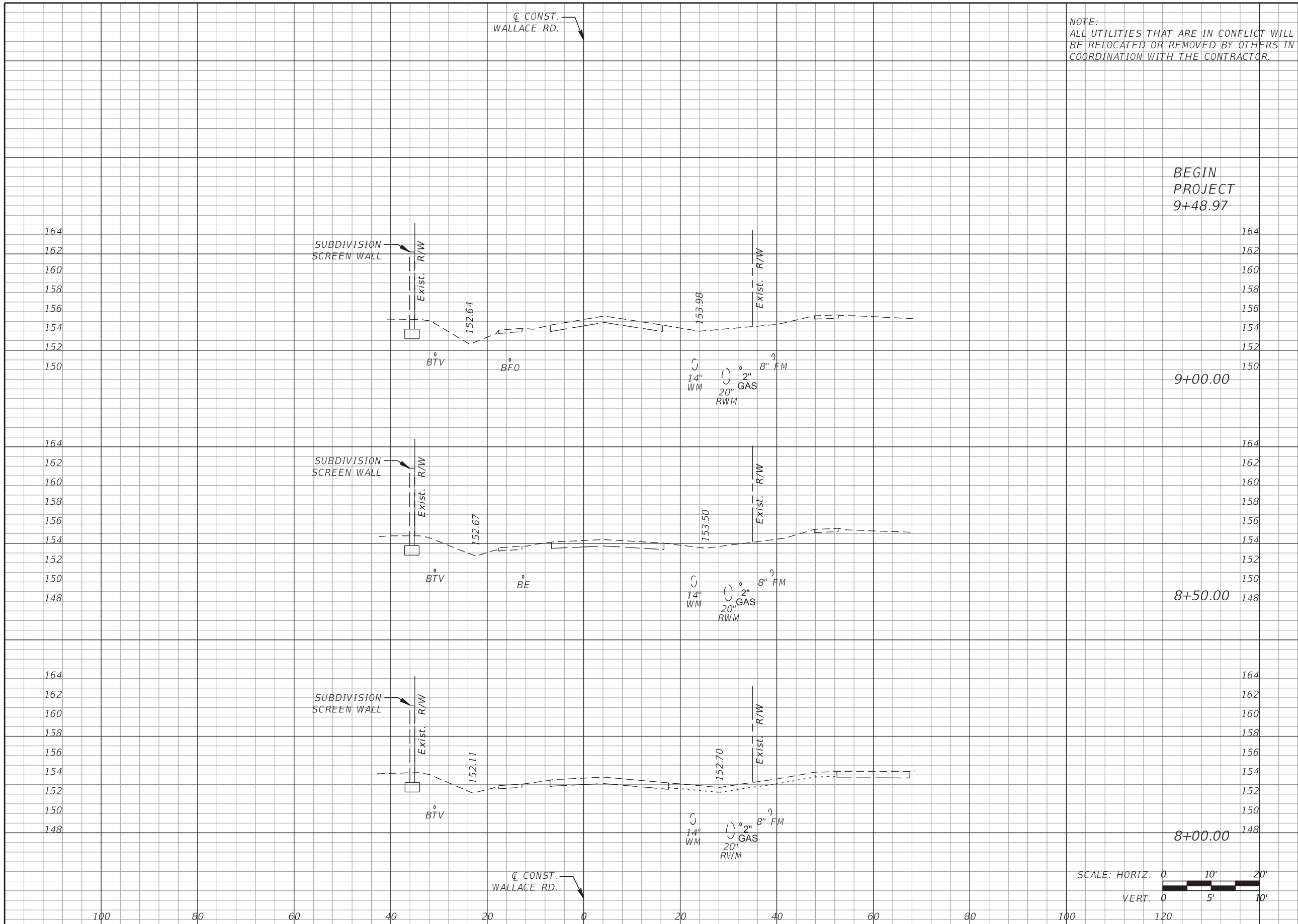
GTC PROJECT NO. **FLO 20.05**      WALLACE ROAD INTERSECTION IMPROVEMENTS      OCPW PROJECT NO. **2722**

Certificate of Authorization Number 6758      Claude L. Cassagnol, P.E. P.E. Number 35490

**CROSS SECTIONS**

SHEET NO. **17**

FILE: H:\Jobs\FLO20.05-Wallace\roadway\RD\SRD01.DGN  
DATE: 3/10/2017 9:51:25 AM



NOTE:  
ALL UTILITIES THAT ARE IN CONFLICT WILL  
BE RELOCATED OR REMOVED BY OTHERS IN  
COORDINATION WITH THE CONTRACTOR.

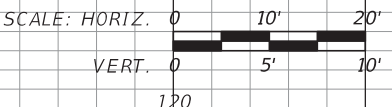
Regular		Exc.		Embankment	
A	V	A	V	A	V

BEGIN  
PROJECT  
9+48.97

9+00.00

8+50.00

8+00.00



REVISIONS			
DATE	DESCRIPTION	DATE	DESCRIPTION

**GTC Engineering Corporation**  
98 South Semoran Blvd, Orlando, FL 32807  
Phone Number - 407.380.0402

**ORANGE COUNTY PUBLIC WORKS**

GTC PROJECT NO. **FLO 20.05**      WALLACE ROAD INTERSECTION IMPROVEMENTS      OCPW PROJECT NO. **2722**

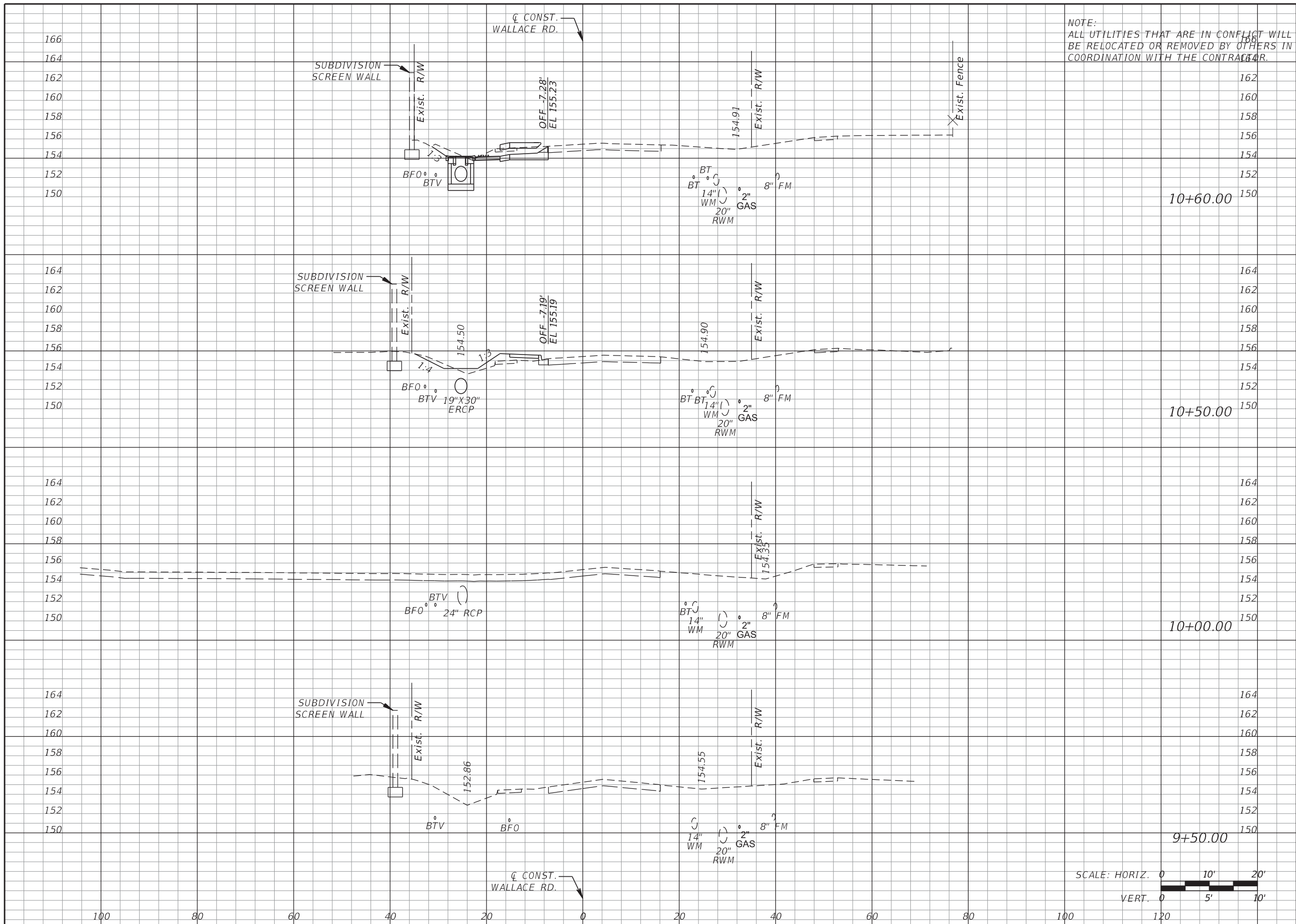
Certificate of Authorization Number 6758      Claude L. Cassagnol, P.E. P.E. Number 35490

**CROSS SECTIONS**

SHEET NO. **18**

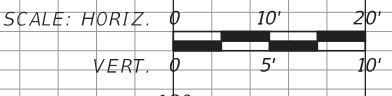
FILE: H:\Jobs\FLO20.05-Wallace\roadway\RD\XSRD01.DGN  
DATE: 3/10/2017 9:51:26 AM





NOTE:  
ALL UTILITIES THAT ARE IN CONFLICT WILL BE RELOCATED OR REMOVED BY OTHERS IN COORDINATION WITH THE CONTRACTOR.

Regular		Exc.	Embankment	
A	V	A	V	
0.0		0.0		
	0.0		0.0	



REVISIONS			
DATE	DESCRIPTION	DATE	DESCRIPTION

**GTC Engineering Corporation**  
98 South Semoran Blvd, Orlando, FL 32807  
Phone Number - 407.380.0402

**ORANGE COUNTY PUBLIC WORKS**

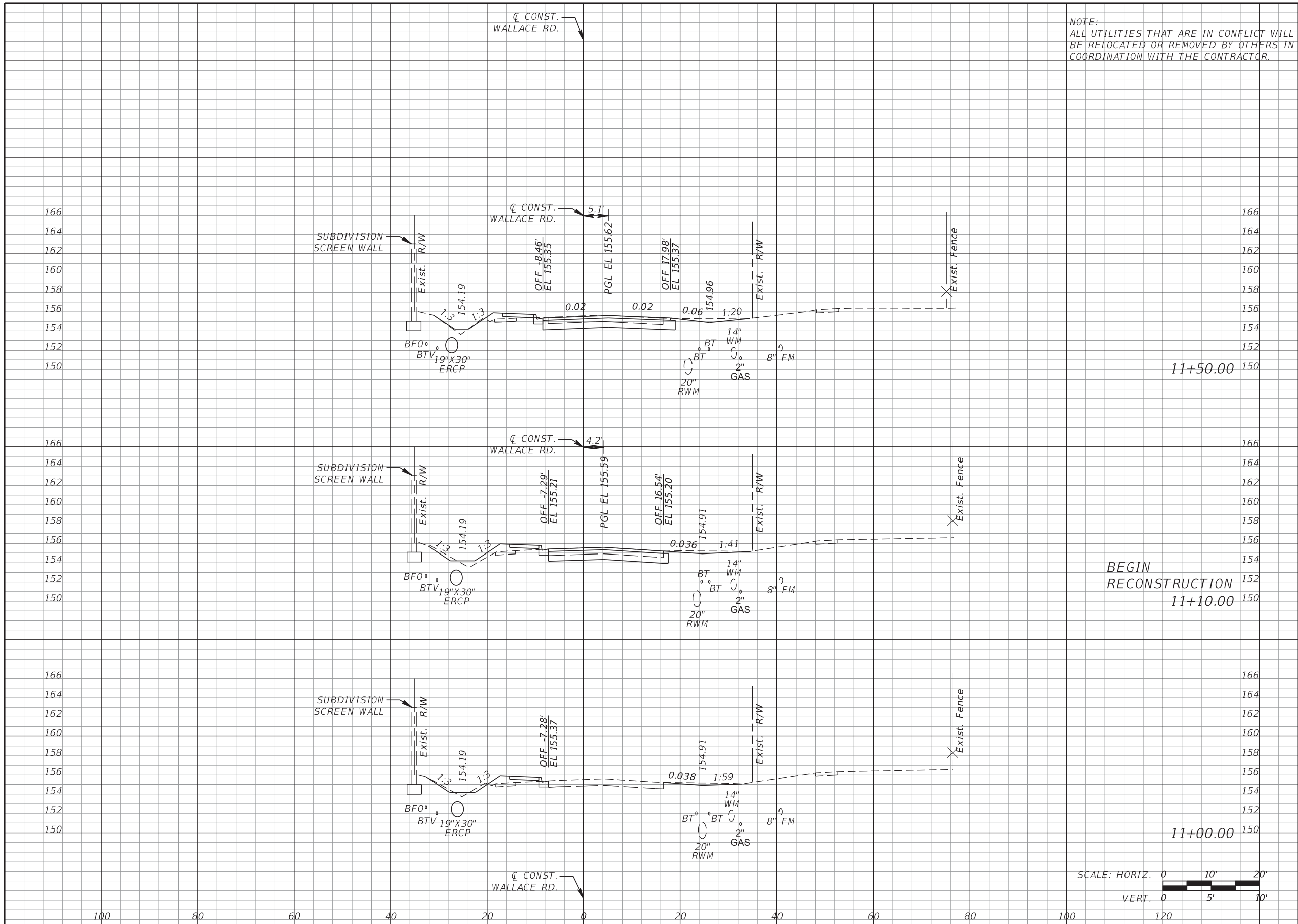
GTC PROJECT NO. **FLO 20.05**      WALLACE ROAD INTERSECTION IMPROVEMENTS      OCPW PROJECT NO. **2722**

Certificate of Authorization Number 6758      Claude L. Cassagnol, P.E. P.E. Number 35490

**CROSS SECTIONS**

SHEET NO. **19**

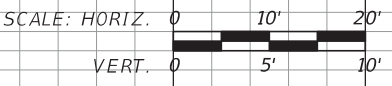
FILE: H:\Jobs\FLO20.05-Wallace\roadway\RD\XSRD01.DGN DATE: 3/10/2017 9:51:26 AM



Regular		Exc.		Embankment	
A	V	A	V	A	V
41.8			2.6		
	57.6				2.0
35.9			0.1		
	7.1				0.0
2.2			0.0		
	1.6				0.0

NOTE:  
ALL UTILITIES THAT ARE IN CONFLICT WILL BE RELOCATED OR REMOVED BY OTHERS IN COORDINATION WITH THE CONTRACTOR.

BEGIN RECONSTRUCTION  
11+10.00



REVISIONS			
DATE	DESCRIPTION	DATE	DESCRIPTION

**GTC Engineering Corporation**  
98 South Semoran Blvd, Orlando, FL 32807  
Phone Number - 407.380.0402

**ORANGE COUNTY PUBLIC WORKS**

GTC PROJECT NO. **FLO 20.05**      WALLACE ROAD INTERSECTION IMPROVEMENTS      OCPW PROJECT NO. **2722**

Certificate of Authorization Number 6758      Claude L. Cassagnol, P.E. P.E. Number 35490

**CROSS SECTIONS**

SHEET NO. **20**

FILE: H:\Jobs\FLO20.05-Wallace\roadway\RDXSROD1.DGN  
DATE: 3/10/2017 9:51:26 AM