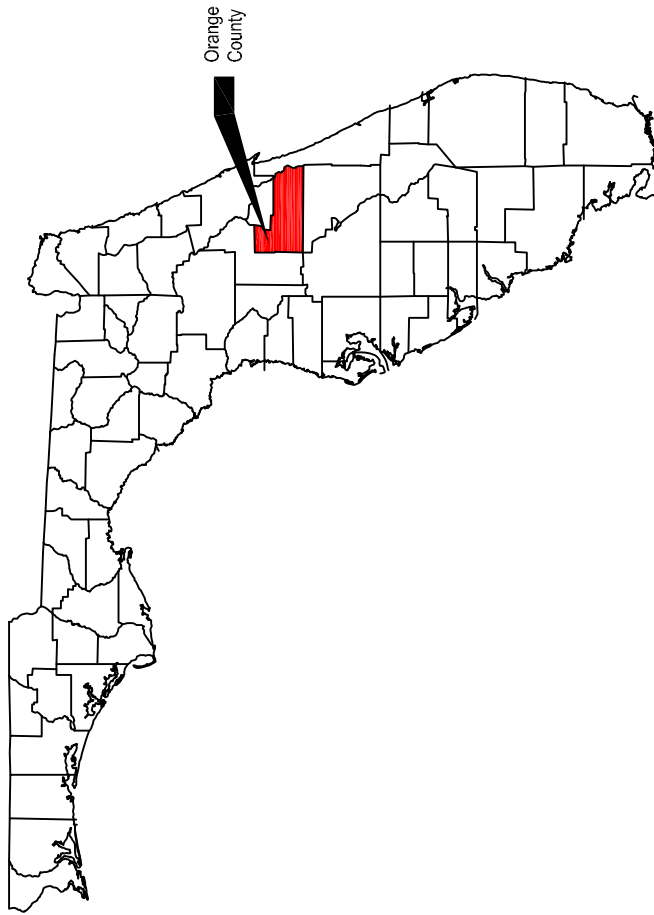


Location Map
Scale: None



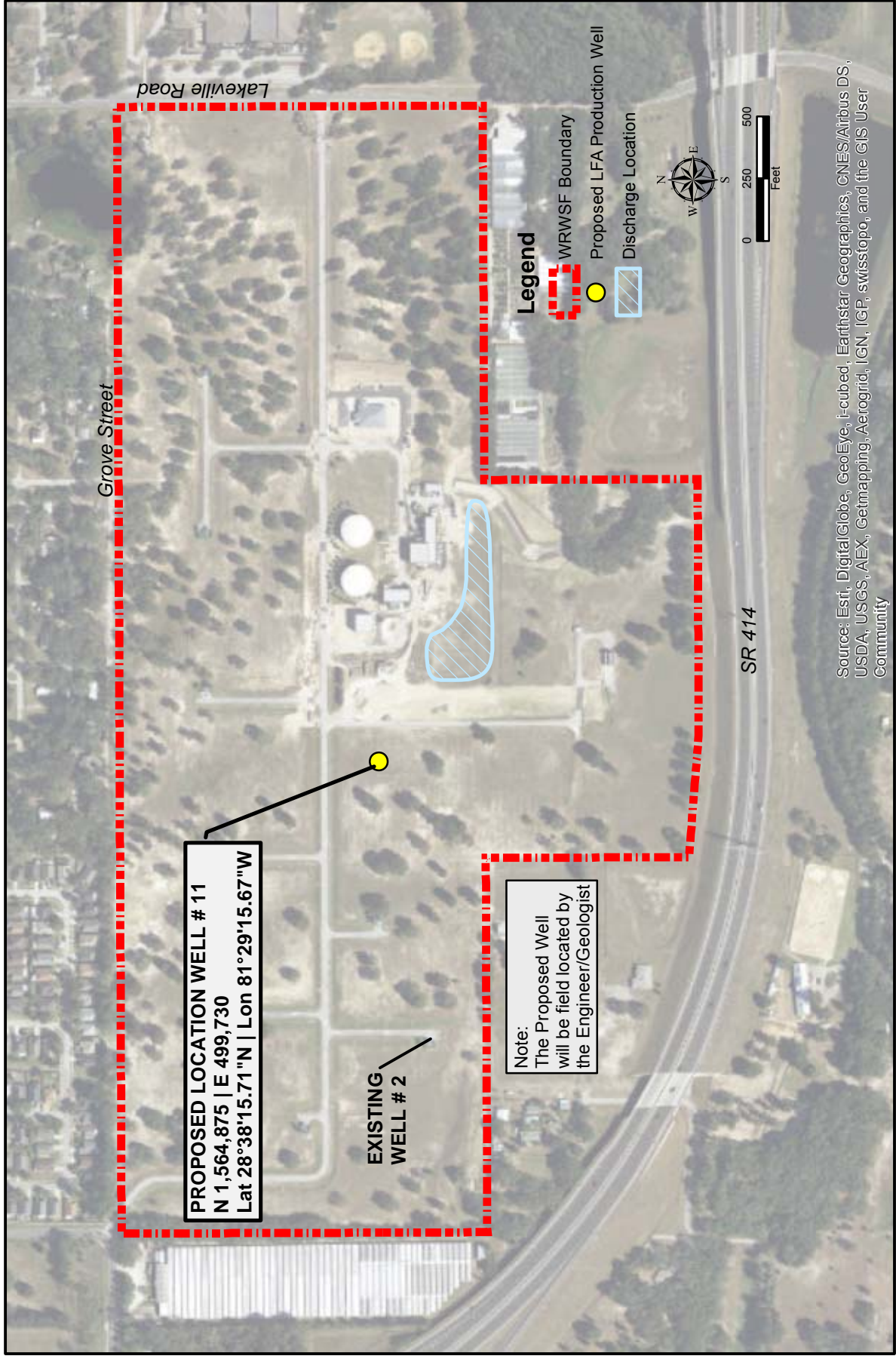
Vicinity Map
Scale: None



**FIGURE 1
WESTERN REGIONAL WATER SUPPLY FACILITY
LOCATION MAP**

wsp
WSP USA Inc.
301 East Pine Street
Orlando, FL 32801
TEL: +1 407 597 7000
FAX: +1 407 597 7980
Certificate of Authorization Number: 00001462

THIS PAGE INTENTIONALLY LEFT BLANK






PROPOSED LOCATION WELL # 11
 N 1,564,875 | E 499,730
 Lat 28°38'15.71" N | Lon 81°29'15.67" W

EXISTING WELL # 2

Note:
 The Proposed Well will be field located by the Engineer/Geologist

Legend

-  WRWSF Boundary
-  Proposed LFA Production Well
-  Discharge Location



Source: Esri, DigitalGlobe, GeoEye, i-cubed, Earthstar Geographics, CNES/Airbus DS, USDA, USGS, AEX, Getmapping, Aerogrid, IGN, IGP, swisstopo, and the GIS User Community



WSP USA Inc.
 301 East Pine Street
 Suite 1020
 Orlando, FL 32801
 TEL: +1 407 587 7800
 FAX: +1 407 587 7960
 Certificate of Authorization Number: 00001462

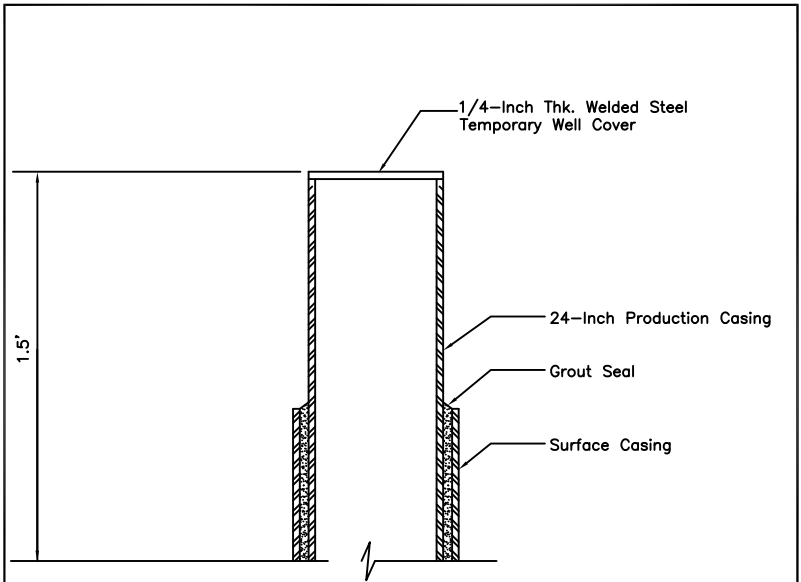
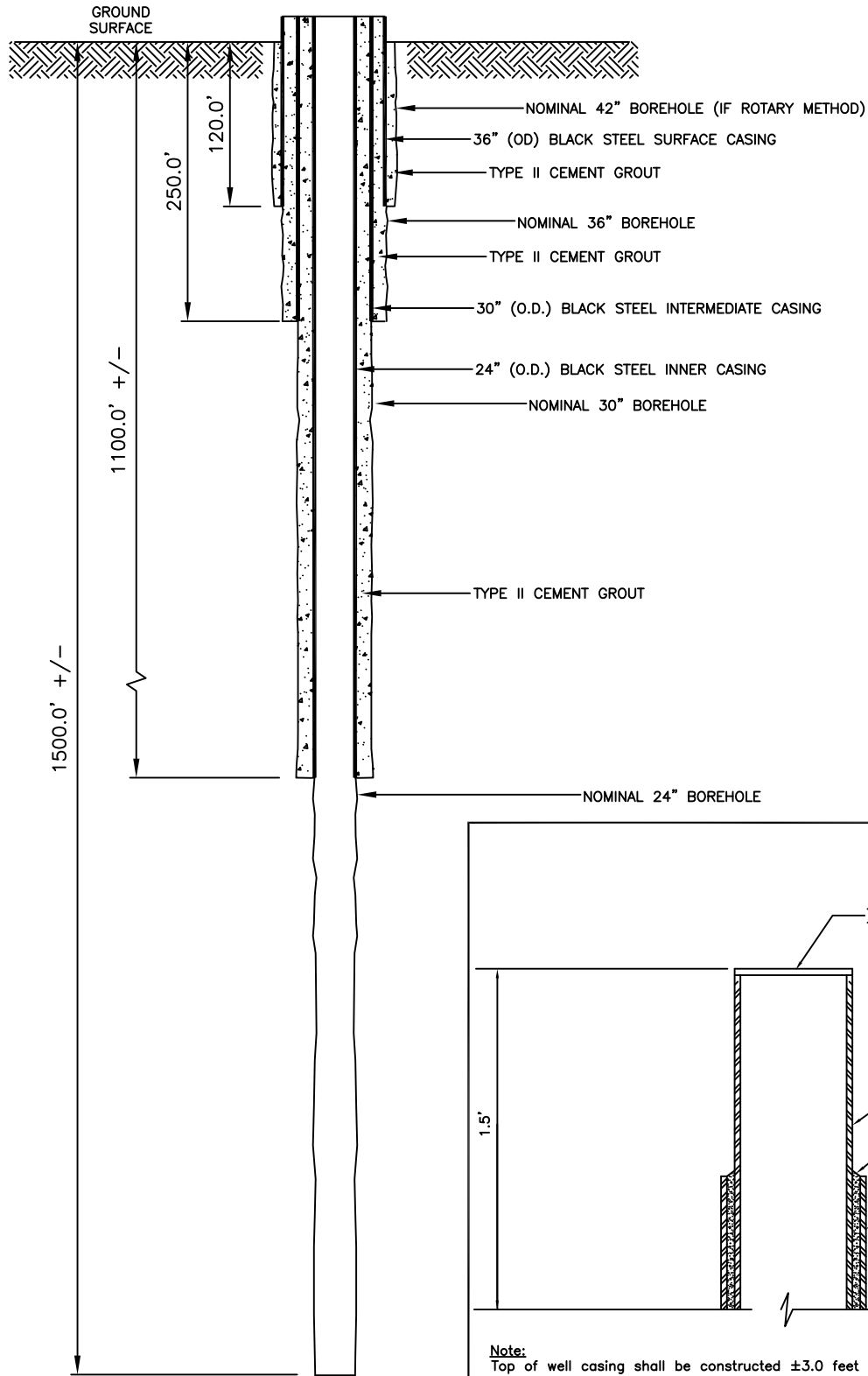
FIGURE 2
WESTERN REGIONAL SUPPLY FACILITY
WELL WR-11 LOCATION



THIS PAGE INTENTIONALLY LEFT BLANK

GENERAL NOTE:

Refer to Specifications Section 02050 for additional information



Note:
Top of well casing shall be constructed ± 3.0 feet above existing ground surface.

Top of Well Casing Detail

NOT TO SCALE



WSP USA Inc.
301 East Pine Street
Suite 1020
Orlando, FL 32801
TEL: +1 407.587.7800
FAX: +1 407.587.7960
Certificate of Authorization Number: 00001462

FIGURE 3
WELL WR-11 CONSTRUCTION DETAILS
WESTERN REGIONAL WATER SUPPLY FACILITY



THIS PAGE INTENTIONALLY LEFT BLANK