



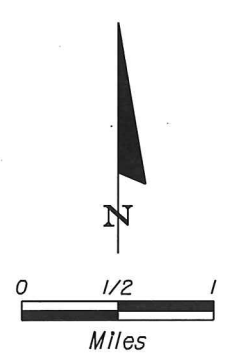
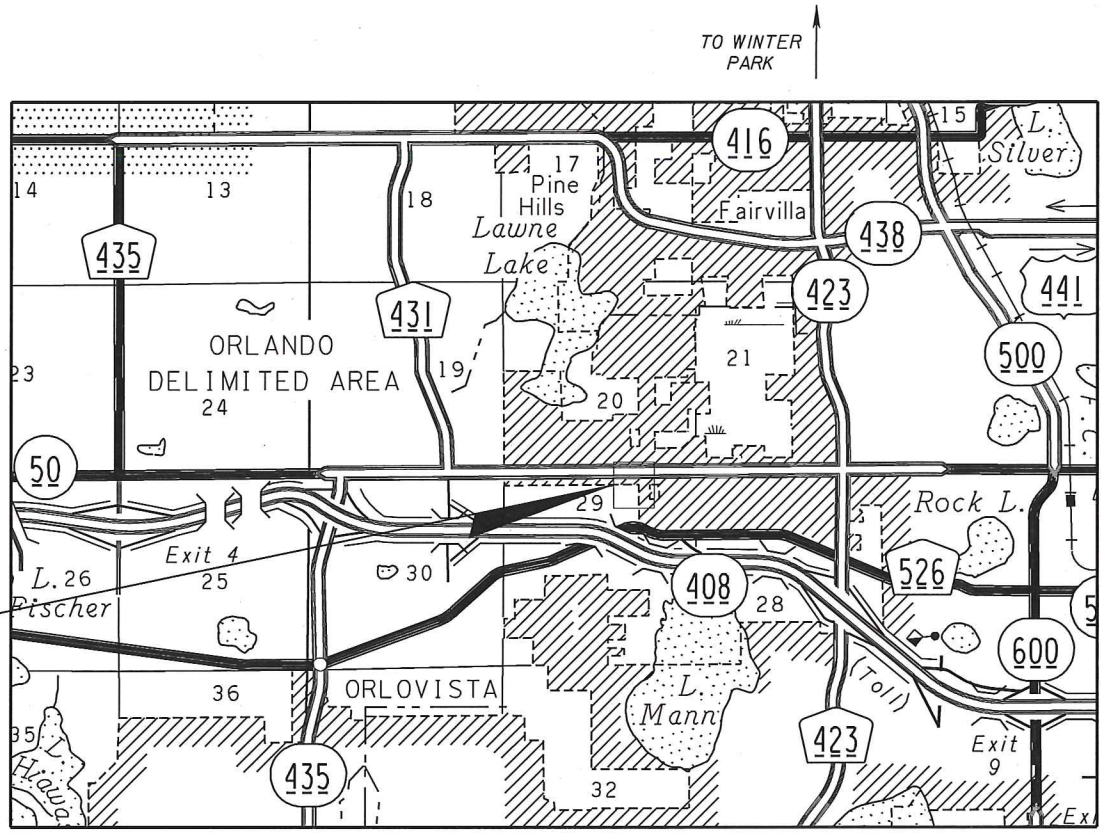
CONSTRUCTION PLANS FOR BARRY STREET DRAINAGE IMPROVEMENTS ORANGE COUNTY, FLORIDA

TERESA JACOBS, COUNTY MAYOR

BOARD OF COUNTY COMMISSIONERS

BETSY VANDERLEY DISTRICT 1
 BRYAN NELSON DISTRICT 2
 PETE CLARKE DISTRICT 3
 JENNIFER THOMPSON DISTRICT 4
 EMILY BONILLA DISTRICT 5
 VICTORIA P. SIPLIN DISTRICT 6

MARK MASSARO, P.E., PUBLIC WORKS DIRECTOR



SOURCE OF BENCHMARK DATUM:
 BENCHMARK 1
 DESIGNATION: S754005
 DESCRIPTION: FOUND RAILROAD SPIKE IN EAST FACE OF POWER POLE, WEST SIDE OF FAIRVILLE ROAD, NORTHWEST CORNER OF FAIRVILLE ROAD AND ENTRANCE TO FAIR GROUNDS, 641 FEET ± NORTH OF STATE ROAD 50
 PUBLISHED EL. = 101.047 FT (NAVD88)
 BENCHMARK 2
 DESIGNATION: TP-3054
 DESCRIPTION: FOUND STANDARD BRASS CAP ON HEADWALL AT NORTHWEST CORNER OF FAIRVILLE ROAD AND COLONIAL DRIVE (W)
 PUBLISHED EL. = 98.852 FT (NAVD88)

*SOURCE OF BENCHMARK DATA:
 ORANGE COUNTY BENCHMARK DATABASE (2010)

PROJECT LOCATION

GOVERNING STANDARDS AND SPECIFICATIONS:
 Florida Department of Transportation, FY2016-17 Design Standard and Revised Index Drawings as appended herein, January 2017 Standard Specifications for Road and Bridge Construction, and 2010 Utility Accommodation Manual, as amended by Contract Documents.

For Design Standards eBook (DSeB) and applicable Design Standards Revisions (DSRs) go to the following website:
<http://www.fdot.gov/rddesign/DesignStandards/Standards.shtm>

For Standard Specifications for Road and Bridge Construction go to the following website:
<http://www.fdot.gov/programmanagement/Implemented/SpecBooks>

NOTE: THE SCALE OF THESE PLANS MAY HAVE CHANGED DUE TO REPRODUCTION.

LENGTH OF PROJECT		
	LINEAR FT.	MILES
CANAL	-	-
BRIDGES	-	-
NET LENGTH OF PROJ.	883	0.167
EXCEPTIONS	-	-
GROSS LENGTH OF PROJ.	883	0.167

FINAL SUBMITTAL
 JULY 2017

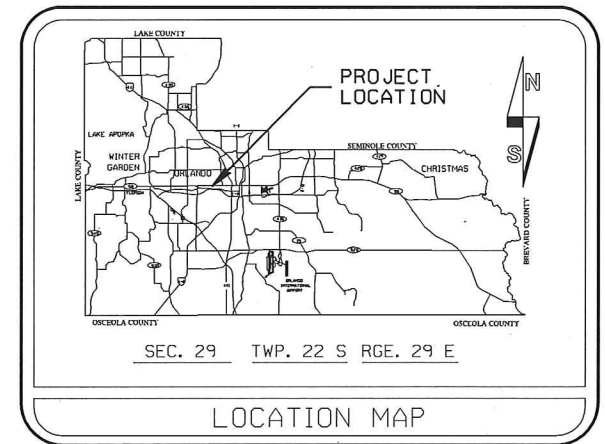
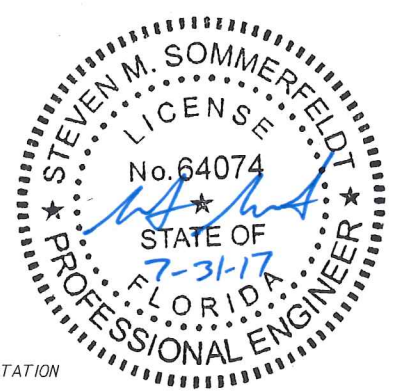
VICINITY MAP

NOTE
 PLANS WERE PREPARED ACCORDING TO AVAILABLE INFORMATION TO ADEQUATELY ADDRESS CONDITIONS AS THEY EXISTED AT THE TIME OF PLANS PREPARATION. NEEDS, CONDITIONS AND OWNERSHIP OF PROPERTIES MAY HAVE CHANGED SINCE PROJECT DESIGN. THE COUNTY'S REPRESENTATIVE WILL ADDRESS CHANGES AND NEEDS WITH THE PROPERTY OWNER OR THEIR REPRESENTATIVES. CONTRACTOR SHALL WORK WITH THE COUNTY'S REPRESENTATIVE IN ADDRESSING AND MEETING NEEDS AND CONDITIONS THAT MAY HAVE CHANGED SINCE PLANS PREPARATION.

CERTIFICATION TO PLANS

THIS IS TO CERTIFY THAT THE CONSTRUCTION PLANS AND SPECIFICATIONS AS CONTAINED HEREIN WERE DESIGNED TO APPLICABLE STANDARDS AS SET FORTH IN THE "MANUAL OF UNIFORM MINIMUM STANDARDS FOR DESIGN, CONSTRUCTION AND MAINTENANCE FOR STREETS AND HIGHWAYS", STATE OF FLORIDA, AS PREPARED BY THE FLORIDA DEPARTMENT OF TRANSPORTATION TALLAHASSEE, FLORIDA. DATED LATEST EDITION.

DATE: 7-31-17 ENGINEER: [Signature] REG. NO. 64074
 STEVEN M. SOMMERFELDT, P.E.



INDEX OF SHEETS	
SHEET	DESCRIPTION
1	KEY SHEET
2	SUMMARY OF PAY ITEMS
2A	SUMMARY OF QUANTITIES
3	TYPICAL SECTIONS
4	GENERAL NOTES
5-5A	PROJECT LAYOUT
6-8	PLAN AND PROFILE SHEETS
9	TYPICAL SECTION / PLAN SHEETS
10	PLAN SHEETS
11	DRIVEWAY DETAILS
12	MISCELLANEOUS DETAILS
13-22	CROSS SECTIONS
23-24	SOIL PROFILES
25	TEMPORARY TRAFFIC CONTROL GENERAL NOTES
26	TEMPORARY TRAFFIC CONTROL TYPICAL SECTION
27	DETOUR PLAN
28-30	TEMPORARY TRAFFIC CONTROL PLAN
31	EROSION CONTROL DETAILS
32-33	STORMWATER POLLUTION PREVENTION PLAN
34	UTILITY ADJUSTMENTS

UTILITIES ENCOUNTERED	
AT&T	407-578-8000
AT&T - DISTRIBUTION	407-351-8180
BRIGHT HOUSE NETWORKS	407-448-5506
CITY OF ORLANDO - BUREAU OF WASTEWATER	407-246-3722
FLA. GAS TRANS.	407-838-7171
MCI	972-729-6322
ORLANDO ORANGE COUNTY EXPRESSWAY AUTHORITY	407-316-3800
ORLANDO UTILITIES COMMISSION - WATER	407-434-2558
ORLANDO UTILITIES COMMISSION - ELECTRIC	407-434-6537
TECO PEOPLES GAS	407-420-2675

Inwood consulting engineers
 Steven M. Sommerfeldt Certificate of Authorization No. 7074
 FL P.E. No. 64074 3000 Doversa Drive, Suite 200 Oviedo, FL 32765

REVISIONS	DATE	BY

DESIGNED BY: TWP DATE: 03-2016
 DRAWN BY: TWP DATE: 11-2016
 CHECKED BY: CW DATE: 02-2017
 APPROVED BY: SMS DATE: 02-2017
 PROJECT NO: ORC-018-01

SHEET 1
 OF 34

SUMMARY OF PAY ITEMS

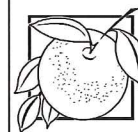
ITEM NUMBER	DESCRIPTION	UNIT	QUANTITY TOTAL	
			PLANS	FINAL
101- 1	MOBILIZATION	LS	1	
102- 1	MAINTENANCE OF TRAFFIC	LS	1	
102- 14	TRAFFIC CONTROL OFFICER	HR	24	
102- 60	WORK ZONE SIGN	ED	620	
102- 71- 13	BARRIER WALL, TEMPORARY, F&I, CONCRETE	LF	420	
102- 74- 1	CHANNELIZING DEVICE - TYPES I, II, DI, VP, DRUM, OR LCD	ED	2,400	
102- 99	PORTABLE CHANGEABLE MESSAGE SIGN, TEMPORARY	ED	318	
104- 1	PREVENTION, CONTROL AND ABATEMENT OF EROSION AND WATER POLLUTION	LS	1	
110- 1- 1	CLEARING AND GRUBBING	AC	0.4	
110- 7- 2A	MAILBOX (RELOCATE EXISTING)	EA	1	
120- 1	EXCAVATION, EMBANKMENT AND GRADING	CY	152	
160- 4	TYPE B STABILIZATION, 12" (FOR DRIVEWAYS)	SY	533	
285-701	OPTIONAL BASE, BASE GROUP 01, 4" (FOR DRIVEWAYS)	SY	533	
327- 70- 19	MILLING EXISTING ASPHALT PAVEMENT, 1" AVG DEPTH	SY	8,500	
334- 1- 13	SUPERPAVE ASPHALTIC CONCRETE, TRAFFIC C, SP-9.5, 1" (FOR DRIVEWAYS)	TN	29.2	
337- 7- 73	ASPHALT CONCRETE FRICTION COURSE, INC BIT/RUBBER, FC-9.5 TRAFFIC LEVEL C, PG 76-22	TN	496.8	
400- 1- 2	CONCRETE CLASS I, ENDWALLS	CY	2	
425- 1-341	INLETS, CURB, TYPE P-4, <10'	EA	1	
425- 1-441	INLETS, CURB, TYPE J-4, <10'	EA	1	
425- 1-461	INLETS, CURB, TYPE J-6, <10'	EA	1	
425- 1-541	INLETS, DT BOT, TYPE D, <10'	EA	5	
425- 1-561	INLETS, DT BOT, TYPE F, <10'	EA	1	
425- 2- 41	MANHOLES, J-7, <10'	EA	1	
425- 2- 61	MANHOLES, P-8, <10'	EA	1	
425- 2- 91	MANHOLES, J-8, <10'	EA	2	
430-175-115	PIPE CULVERT, REINFORCED CONCRETE, ROUND, 15" S/CD	LF	3	
430-175-118	PIPE CULVERT, REINFORCED CONCRETE, ROUND, 18" S/CD	LF	117	
430-175-124	PIPE CULVERT, REINFORCED CONCRETE, ROUND, 24" S/CD	LF	9	
430-175-130	PIPE CULVERT, REINFORCED CONCRETE, ROUND, 30" S/CD	LF	564	
430-185-130	PIPE CULVERT, I.D. STEEL CARRIER PIPE, ROUND, JACK & BORE, 30" S/CD	LF	136	
520- 1- 10A	CONCRETE CURB AND GUTTER, TYPE F	LF	37	
520- 1- 10B	CONCRETE CURB AND GUTTER, DROP CURB	LF	14	
520- 2- 4	CONCRETE CURB, TYPE D	LF	18	
520- 3	VALLEY GUTTER - CONCRETE	LF	80	
522- 2A	CONCRETE SIDEWALK AND DRIVEWAY, 6" THICK	SY	400	
522- 2B	CONCRETE SIDEWALK AND DRIVEWAY (FOR DRIVEWAYS), 6" THICK	SY	8	
570- 1	PERFORMANCE TURF, SOD	SY	550	
630-1-12	CONDUIT, F&I, UNDERGROUND	LF	160	
660-2-102	LOOP ASSEMBLY, F&I, TYPE B	AS	12	
660-2-106	LOOP ASSEMBLY, F&I, TYPE F	AS	6	
710-90-	PAINTED PAVEMENT MARKINGS - FINAL SURFACE	LS	1	
711-11-102	THERMOPLASTIC, STANDARD, WHITE, SOLID, 8"	GM	0.0838	
711-11-111	THERMOPLASTIC, STANDARD, WHITE, SOLID, 6"	GM	0.2670	
711-11-123	THERMOPLASTIC, STANDARD, WHITE, SOLID, 12"	LF	464	
711-11-124	THERMOPLASTIC, STANDARD, WHITE, SOLID, DIAG. / CHEVRONS, 18"	LF	102	
711-11-125	THERMOPLASTIC, STANDARD, WHITE, SOLID, 24"	LF	311	
711-11-131	THERMOPLASTIC, STANDARD, WHITE, SKIP, 6", 10-30 SKIP	GM	0.2888	
711-11-141	THERMOPLASTIC, STANDARD, WHITE, 2-4 DOTTED GUIDELINE / 6-10 GAP EXTENSION, 6"	GM	0.0532	
711-11-170	THERMOPLASTIC, STANDARD, WHITE, ARROW	EA	7	
711-11-211	THERMOPLASTIC, STANDARD, YELLOW, SOLID, 6"	GM	0.0802	
900- 1	AS-BUILT PLANS	LS	1	
900- 2	INDEMNIFICATION	LS	1	

PAY ITEM NOTES

- 101-1 INCLUDES ALL APPLICABLE SURVEY COSTS AND COSTS NECESSARY FOR A VIDEO SURVEY. INCLUDES ALL EFFORTS NECESSARY TO CONSTRUCT AND DISMANTLE A TEMPORARY STAGING AREA (INCLUDING CHECK DAMS) AS NEEDED TO ACCOMMODATE TYPICAL WET SEASON RAINFALL EVENTS OCCURRING DURING CONSTRUCTION. INCLUDES ALL MONITORING AND INVESTIGATION EFFORTS BY A GEOTECHNICAL ENGINEER AS NECESSARY DURING AND AFTER CONSTRUCTION DUE TO SIGNS OF GROUND SETTLING / SHIFTING. SEE GENERAL NOTES FOR ADDITIONAL ITEMS INCLUDED UNDER THIS PAY ITEM.
- 102-1 INCLUDES THE COST OF THE AS NEEDED REMOVAL OR RELOCATION OF EXISTING SIGNS AND PAVEMENT MARKINGS WHICH CONFLICT WITH THE TRAFFIC CONTROL PLAN DURING A PHASE OF CONSTRUCTION, PRIOR TO COMMENCEMENT OF THAT PHASE.
- 104- 1 INCLUDES THE COST OF ALL ITEMS REQUIRED FOR EROSION CONTROL INCLUDING, BUT NOT LIMITED TO, SYNTHETIC BALES, INLET PROTECTION, SILT FENCE, AND TEMPORARY GRASSING, AS SHOWN IN THE PLANS OR AS DIRECTED BY THE COUNTY.
- 110-1-1 INCLUDES, BUT IS NOT LIMITED TO, THE SAWCUT, REMOVAL AND DISPOSAL OF EXISTING PAVEMENT, DRIVEWAY ASPHALT/CONCRETE, CURB AND BASE REQUIRED TO CONSTRUCT THE PROJECT. INCLUDES THE REMOVAL OF EXISTING MANHOLES, CULVERT PIPES, CURB INLETS, DITCH BOTTOM INLETS, ENDWALLS, ETC. AS CALLED OUT IN THE PLANS. INCLUDES THE TRANSPORT AND DISPOSAL OF ALL REMOVED MATERIALS TO AN APPROVED ORANGE COUNTY DISPOSAL SITE YARD OR AS DIRECTED BY THE COUNTY. INCLUDES THE COST OF TEMPORARY FENCING FOR SECURING THE WORK ZONE AND PREVENTING PEDESTRIAN TRAFFIC. IT IS THE CONTRACTOR'S RESPONSIBILITY TO REPLACE IN-KIND OR BETTER ANY DAMAGED FENCING IDENTIFIED TO REMAIN, DAMAGED MAILBOXES OR ANY OTHER PRIVATE PROPERTY DISTURBED DURING CONSTRUCTION. INCLUDES THE RELOCATION OF PERSONAL PROPERTY BY THE CONTRACTOR. COORDINATION EFFORTS WITH THE PROPERTY OWNER FOR THE RELOCATION OF PRIVATE PROPERTY SHALL ALSO BE INCLUDED. INCLUDES THE COST OF RESIDENT NOTIFICATION PRIOR TO THE COMMENCEMENT OF WORK. THE CONTRACTOR SHALL NOTIFY ALL RESIDENTS WITHIN THE WORK AREA AS TO WHEN THE WORK WILL TAKE PLACE AND EXPLAIN THE LEVEL OF INCONVENIENCE THAT WILL BE INVOLVED. THIS NOTIFICATION SHALL TAKE PLACE FIVE (5) DAYS PRIOR TO COMMENCEMENT OF ANY WORK IN THAT AREA. THE NOTIFICATION WILL BE BY AN APPROVED DOOR HANGER TO BE PLACED ON EACH HOUSE AND ANY VEHICLES PARKED ON THE ROADWAYS.
- 110-7-2A INCLUDES COST OF ALL MATERIALS, LABOR, AND EQUIPMENT REQUIRED FOR RELOCATING MAILBOX.
- 120-1 INCLUDES THE COST OF ALL WORK REQUIRED FOR DITCH EXCAVATION, EMBANKMENT FILL, AND ASSOCIATED GRADING.
- 430-175-115 PAYMENT INCLUDES THE COST OF CONCRETE JACKET.
- 430-185-130 INCLUDES THE COST OF ALL MATERIALS, LABOR AND EQUIPMENT REQUIRED FOR JACK & BORE INSTALLATION OF STEEL CARRIER PIPE. REFER TO FDOT STANDARD SPECIFICATIONS SECTION 556 FOR DETAILS.
- 520-1-10A, 520-1-10B & 520-2-4 INCLUDES THE COST OF ALL MATERIALS, LABOR, AND EQUIPMENT REQUIRED FOR CONSTRUCTION OF CURB AND GUTTER. INCLUDES COST OF CURB TRANSITION FROM TYPE F CURB (AT INLET EDGES) TO EXISTING CURB, TRANSITIONS BETWEEN TYPE F CURB AND GUTTER TO DROP CURB, TRANSITIONS FOR TYPE D CURB, AND TRANSITIONS AT SIDEWALK RAMPS.
- 522-2A INCLUDES DETECTABLE WARNING SYSTEMS FOR ALL SIDEWALK CURB RAMPS. DETECTABLE WARNING SYSTEMS SHALL MEET ALL CURRENT ADA STANDARDS. USE ONLY PRODUCTS FROM THE FDOT APPROVED PRODUCTS LIST.
- 570-1 INCLUDES THE COST OF PEGGING, FERTILIZER AND WATER AS REQUIRED FOR ESTABLISHMENT OF PERMANENT SODDING. SOD PLACED ON ALL SLOPES 1:3 OR STEEPER SHALL BE PEGGED. ALSO INCLUDES THE COST OF TOPSOIL TREATMENT ON ALL PERMANENT GRASS AREAS AND MOWING UNTIL THE FINAL PROJECT ACCEPTANCE BY THE COUNTY.
- 710-90 INCLUDES THE COST FOR RETROREFLECTIVE PAVEMENT MARKERS. ONE APPLICATION OF RETROREFLECTIVE PAVEMENT MARKERS REQUIRES 115 UNITS. SEE SECTION 710 OF THE FDOT STANDARD SPECIFICATIONS FOR THE NUMBER OF APPLICATIONS REQUIRED.

REVISIONS		
DATE	BY	DESCRIPTION

**BARRY STREET
DRAINAGE IMPROVEMENTS**



**ORANGE COUNTY
GOVERNMENT
FLORIDA**



Steven M. Sommerfeldt, PE
PE No. 64074
Certificate of Authorization No. 7074

3000 Dovers Drive, Suite 200
Oviedo, Florida 32765
p 407.971.8850

SUMMARY OF PAY ITEMS

SHEET NO.

2

SUMMARY OF PERFORMANCE TURF (SOD)

DESCRIPTION	SY	
	P	F
PERFORMANCE TURF (SOD)	550	

SUMMARY OF EARTHWORK*

DESCRIPTION	CY	
	P	F
EXCAVATION	110	
EMBANKMENT +35%	42	

SUMMARY OF MAILBOXES (RELOCATION)

LOCATION (STA.)	SIDE	REMARKS	QUANTITY	
			P	F
38+37.00	LT	FAIRVILLA ROAD	1	

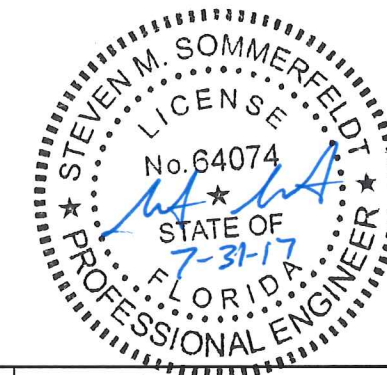
SUMMARY OF CURB & GUTTER

LOCATION (STA. TO STA.)	SIDE	TYPE	LF	
			P	F
40+80.63 - 41+59.57	RT	VALLEY GUTTER	80	
41+55.24 - 41+63.46	LT/RT	TYPE D	18	
41+59.57 - 41+76.24	RT	TYPE F	17	
41+88.00 - 41+99.93	RT	TYPE F	14	
41+99.93 - 42+07.91	LT/RT	DROP CURB	14	
CURB TRANSITIONS AT S-109	LT	TYPE F	6	
TOTAL:			149	

SUMMARY OF CONCRETE SIDEWALK AND DRIVEWAY (6" THICK)

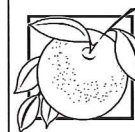
LOCATION (STA. TO STA.)	SIDE	TYPE	SY	
			P	F
35+06.76 - 42+01.90	LT. & RT.	SIDEWALK	400	
TOTAL:			400	

* QUANTITIES ARE APPROXIMATE AND ARE PROVIDED FOR INFORMATIONAL PURPOSES ONLY.
CONTRACTOR IS RESPONSIBLE FOR DETERMINING ACTUAL QUANTITIES FOR LUMP SUM PAY ITEMS.



REVISIONS		
DATE	BY	DESCRIPTION

**BARRY STREET
DRAINAGE IMPROVEMENTS**



**ORANGE COUNTY
GOVERNMENT
FLORIDA**

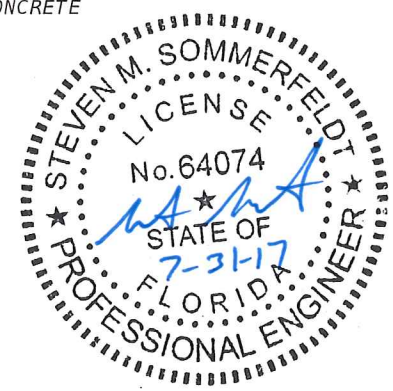
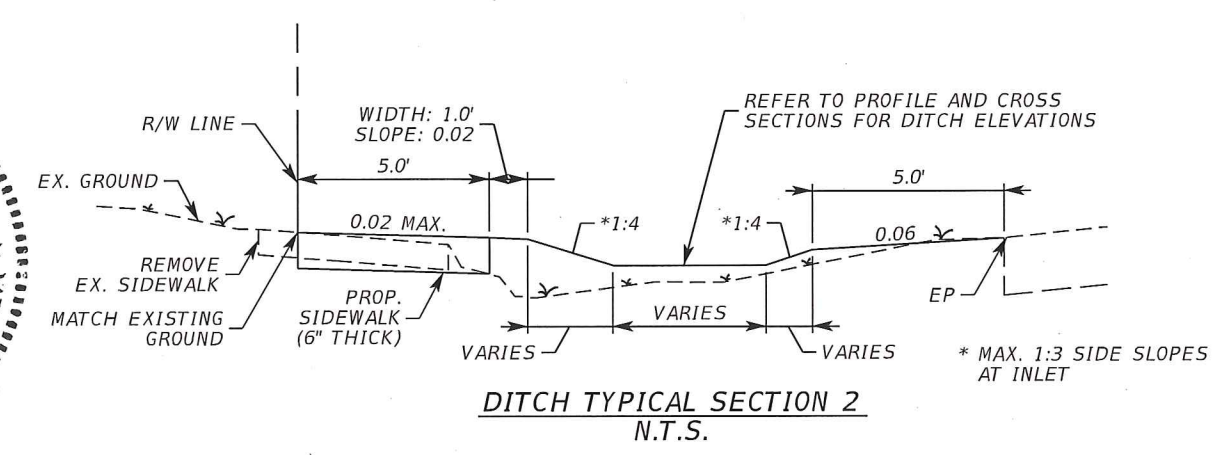
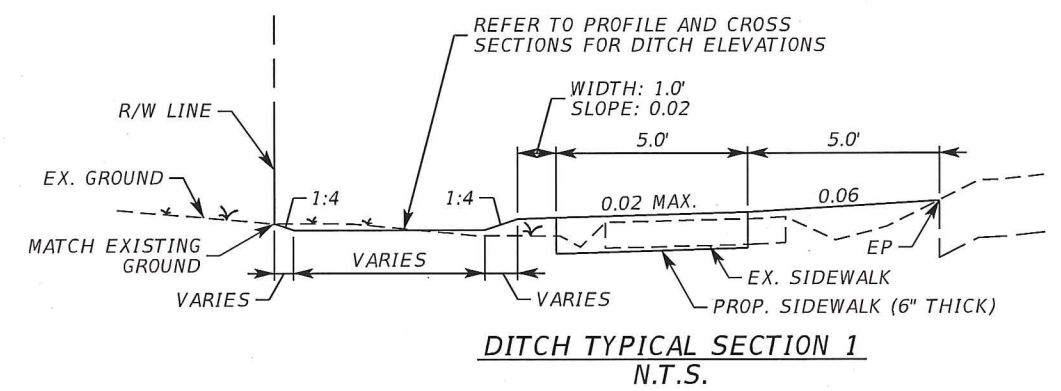
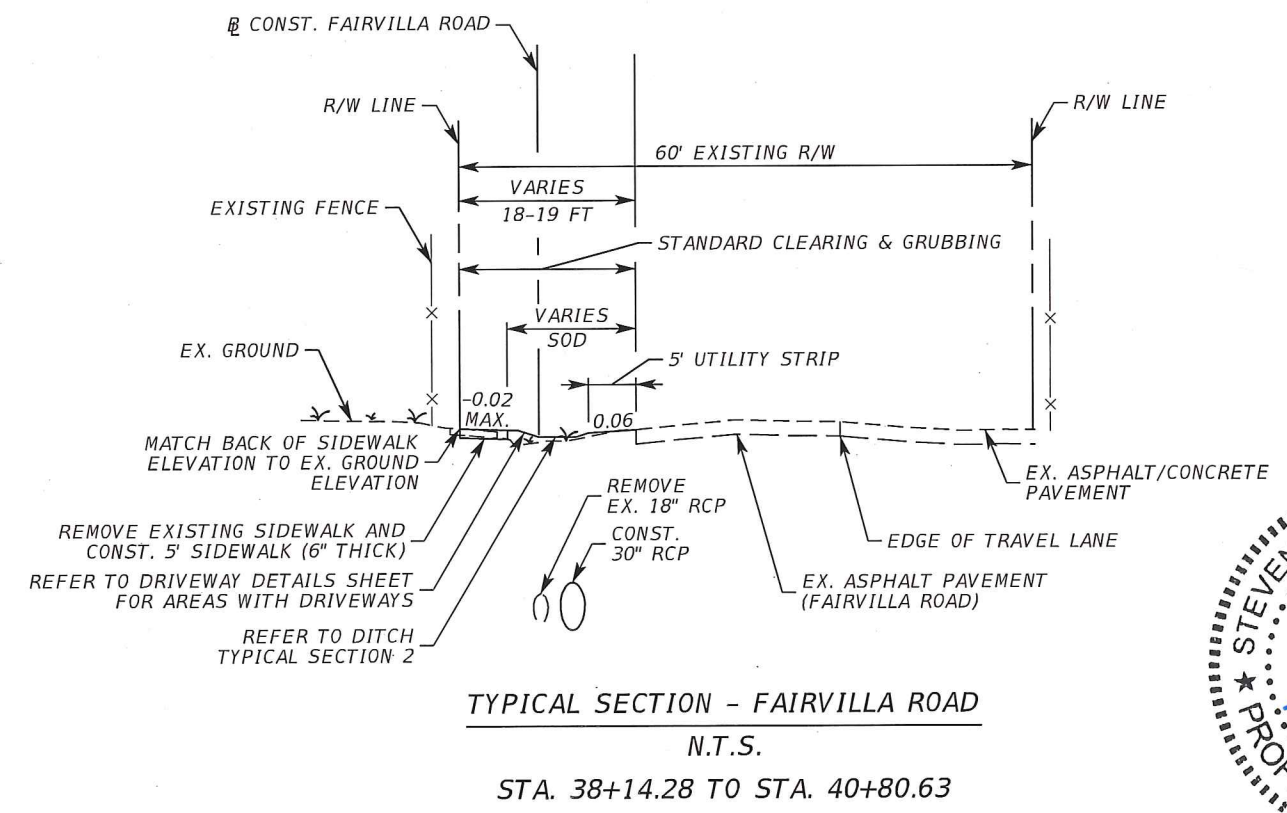
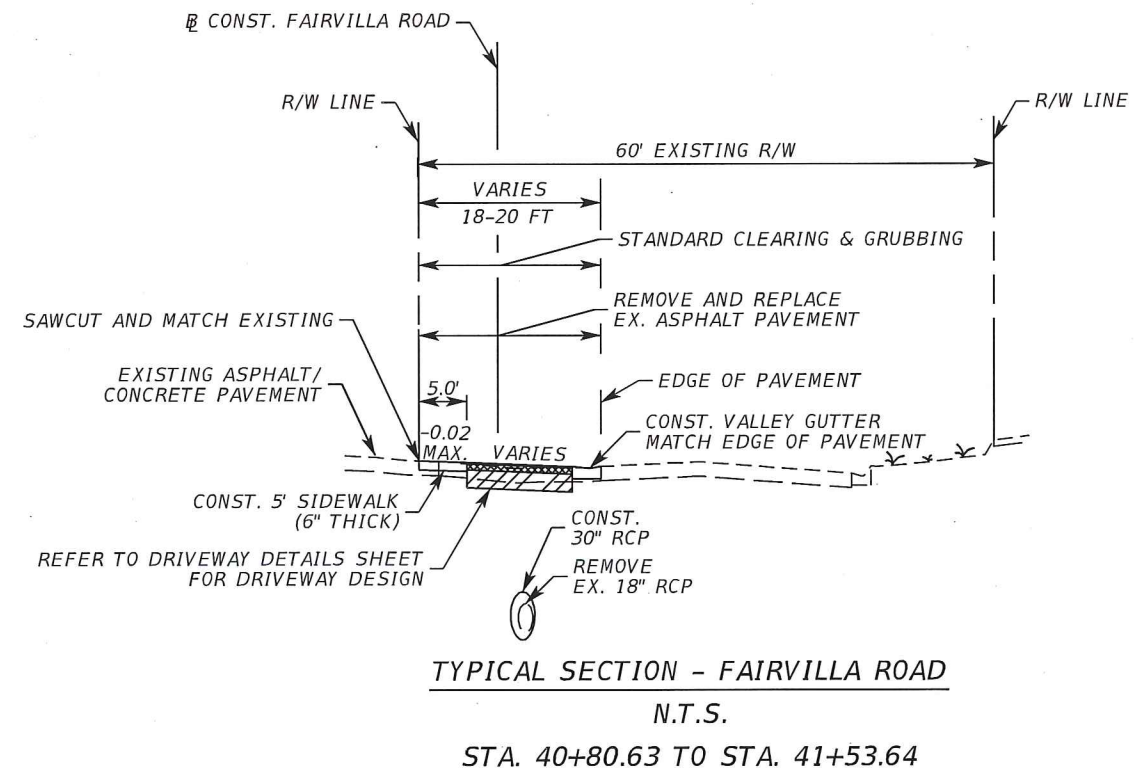
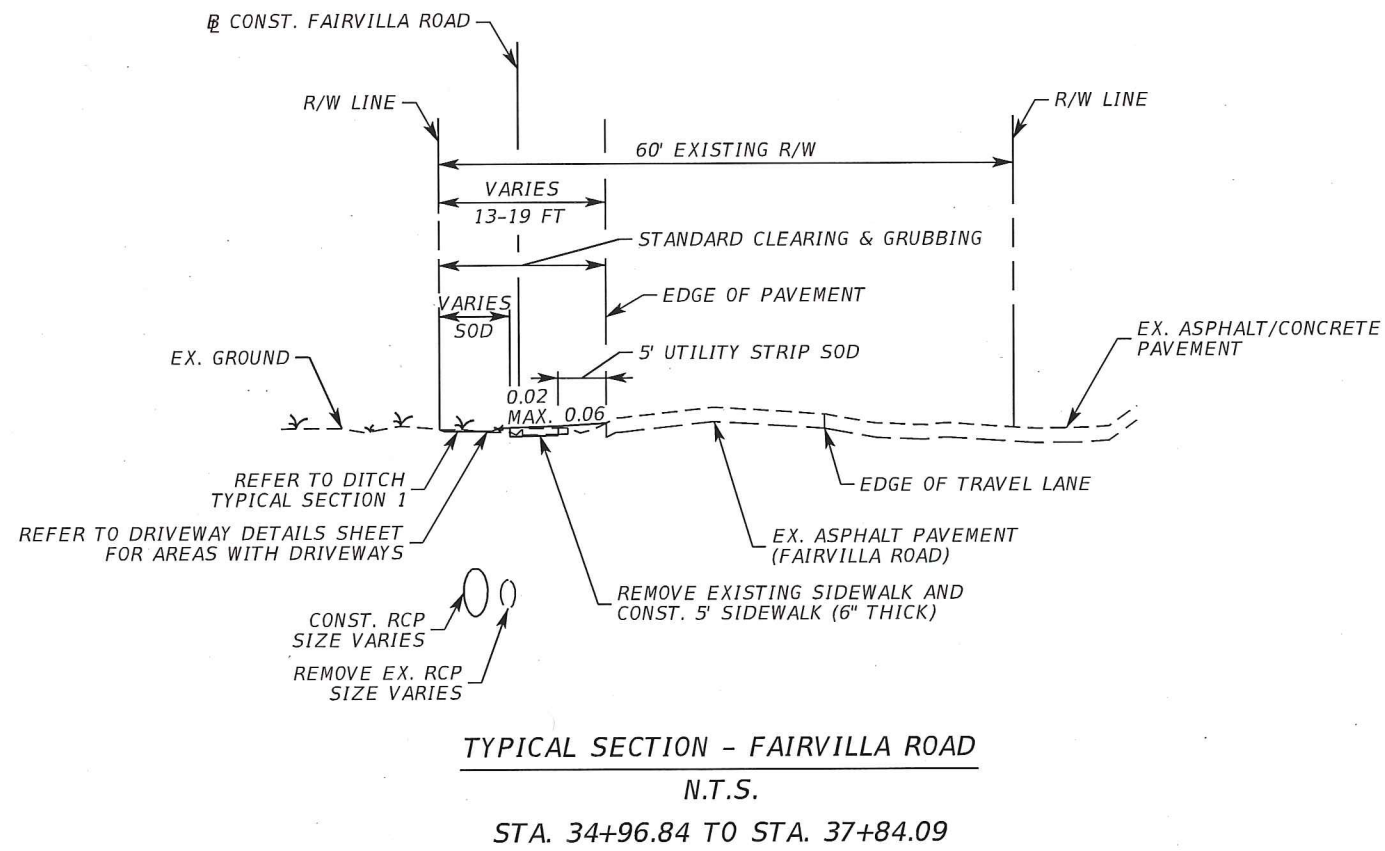


Steven M. Sommerfeldt, PE 3000 Dovera Drive, Suite 200
PE No. 64074 Oviedo, Florida 32765
Certificate of Authorization No. 7074 p.407.971.8850

SUMMARY OF QUANTITIES

SHEET NO.

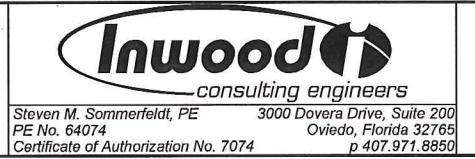
2A



NOTE: SIDEWALK ALIGNMENT TRANSITIONS FROM STA. 37+84.09 TO STA. 38+14.28. SEE PLAN AND PROFILE SHEET FOR DETAILS.

REVISIONS		
DATE	BY	DESCRIPTION

**BARRY STREET
DRAINAGE IMPROVEMENTS**



TYPICAL SECTIONS

SHEET NO.
3

Steven M. Sommerfeldt, PE 3000 Dovera Drive, Suite 200
PE No. 64074 Oviedo, Florida 32765
Certificate of Authorization No. 7074 p 407.971.8890

GENERAL NOTES

1. ALL CONSTRUCTION WITHIN ORANGE COUNTY AND FDOT RIGHT-OF-WAY SHALL BE IN ACCORDANCE WITH AND CONFORM TO THE MOST STRINGENT REQUIREMENTS OF THE PROJECT SPECIFICATIONS, THE FLORIDA DEPARTMENT OF TRANSPORTATION STANDARD SPECIFICATIONS FOR ROAD AND BRIDGE CONSTRUCTION (JANUARY 2017) FDOT DESIGN STANDARDS (FY2016-17), AND SUPPLEMENTS THERETO. ALL CONSTRUCTION WITHIN ORANGE COUNTY R/W SHALL ALSO MEET ORANGE COUNTY ROAD CONSTRUCTION SPECIFICATIONS.
2. SUBSURFACE INFORMATION SHOWN ON THESE DRAWINGS WAS OBTAINED FOR USE IN ESTABLISHING TOPOGRAPHIC FEATURES FOR THE PROJECT. THE ACCURACY OF THIS INFORMATION IS NOT GUARANTEED AND IS NOT TO BE CONSTRUED AS PART OF THE PLAN GOVERNING CONSTRUCTION OF THE PROJECT. IT IS THE RESPONSIBILITY OF THE CONTRACTOR TO INQUIRE OF THE ENGINEER IF ADDITIONAL INFORMATION IS AVAILABLE, TO MAKE ARRANGEMENTS TO REVIEW SAME PRIOR TO BIDDING, AND TO MAKE HIS OWN DETERMINATION AS TO ALL SUBSURFACE CONDITIONS.
3. ALL PERSONAL PROPERTY, WITHIN THE DRAINAGE EASEMENTS AND RIGHTS-OF-WAY NOT RELOCATED BY THE PROPERTY OWNER SHALL BE RELOCATED BY THE CONTRACTOR AS NECESSARY TO CONSTRUCT THE PROJECT IN ACCORDANCE WITH THE PLANS. RELOCATION OF PERSONAL PROPERTY BY THE CONTRACTOR SHALL BE IN COORDINATION WITH THE PROPERTY OWNER. PAYMENT WILL BE INCLUDED IN CLEARING AND GRUBBING. ANY IMPACTS OUTSIDE OF THE RIGHT-OF-WAY SHALL BE BROUGHT TO THE COUNTY'S ATTENTION IMMEDIATELY AND PRIOR TO PERFORMING WORK.
4. THE DISPOSAL OF EXCESS EARTHWORK MATERIALS SHALL BE THE RESPONSIBILITY OF THE CONTRACTOR. APPROVALS OF THE DISPOSAL SITES SHALL BE OBTAINED FROM ORANGE COUNTY PRIOR TO DISPOSAL. ALL EXCESS MATERIALS ARE THE PROPERTY AND RESPONSIBILITY OF THE CONTRACTOR.
5. SOD ALL DISTURBED AREAS UNLESS OTHERWISE SHOWN ON THE PLANS. SOD SHALL MATCH EXISTING TYPE SOD UNLESS OTHERWISE DIRECTED BY THE ENGINEER.
6. INSTALL TOPSOIL TREATMENT ON ALL PERMANENT GRASS AREAS. COST TO BE INCLUDED IN CONTRACT UNIT PRICE FOR SOD.
7. PEGGED SOD TO BE PLACED ON ALL SLOPES 1:3 OR STEEPER.
8. ALL OFFSETS SHOWN ARE TO THE \square OF CONSTRUCTION.
9. THE CONTRACTOR SHALL PERFORM HIS WORK IN ACCORDANCE WITH REQUIREMENTS OF THE VARIOUS PERMITS INCLUDED IN THE BID SPECIFICATIONS. PAYMENT IS INCLUDED IN THE BID PRICE FOR SECTION 104; "PREVENTION, CONTROL, AND ABATEMENT OF EROSION AND WATER POLLUTION", EXCLUDING ITEMS SPECIFIED ELSEWHERE. ENVIRONMENTAL CONTROLS SHALL BE USED AT LOCATIONS DESIGNATED IN THE PLANS AND/OR DESIGNATED BY THE ENGINEER.
10. THE INFORMATION SHOWN ON THESE DRAWINGS CONCERNING TYPE AND LOCATION OF UNDERGROUND AND OTHER UTILITIES IS BASED ON AVAILABLE RECORDS AND SURVEYS BUT IS NOT GUARANTEED TO BE ACCURATE OR ALL INCLUSIVE. THE CONTRACTOR SHALL MAKE HIS OWN DETERMINATION AS TO THE TYPE AND LOCATION OF THE UTILITIES AS MAY BE NECESSARY TO AVOID DAMAGE THERETO AND IS RESPONSIBLE FOR COORDINATING UTILITY RELOCATION WITH PROJECT CONSTRUCTION. PRIOR TO ORDERING DRAINAGE STRUCTURES, THE CONTRACTOR SHALL DETERMINE IF DRAINAGE/UTILITY CONFLICTS EXIST. INFORMATION ON CONFLICTS IS TO BE SUBMITTED TO THE ENGINEER AS SOON AS POSSIBLE AFTER DISCOVERY FOR RESOLUTION. SUNSHINE STATE ONE CALL MUST BE NOTIFIED FOR LOCATES AT 1-800-432-4770.
11. ALL EXCAVATIONS SHALL BE REQUIRED TO CONFORM TO THE PROVISIONS OF PART IV OF CHAPTER 553.60, F.S., ALSO KNOWN AS THE "TRENCH SAFETY ACT", TO PROTECT EXISTING PAVEMENT, STRUCTURES, FOUNDATIONS, AND CONSTRUCTION PERSONNEL DURING CONSTRUCTION OF THE PROJECT.
12. THE LOCATION OF ALL EXISTING UTILITY SERVICES, FACILITIES AND STRUCTURAL FEATURES SHOWN ON THE PLANS HAVE BEEN DETERMINED FROM THE BEST AVAILABLE INFORMATION AND ARE PROVIDED FOR THE CONVENIENCE OF THE CONTRACTOR. ORANGE COUNTY AND ITS REPRESENTATIVE DO NOT GUARANTEE THE ACCURACY OR COMPLETENESS OF THE LOCATION INFORMATION PROVIDED. ANY INACCURACY OR OMISSION OF SUCH INFORMATION SHALL NOT RELIEVE THE CONTRACTOR OF HIS RESPONSIBILITY TO PROTECT SUCH EXISTING FEATURES FROM DAMAGE OR UNSCHEDULED INTERRUPTION OF SERVICES. THE CONTRACTOR SHALL HALT CONSTRUCTION AND NOTIFY THE ENGINEER IMMEDIATELY IF A DISCREPANCY BETWEEN THESE PLANS AND ACTUAL FIELD CONDITIONS ARISE THAT WOULD APPRECIABLY AFFECT THE EXECUTION OF THESE PLANS.

13. THE CONTRACTOR SHALL BE RESPONSIBLE FOR LOCATING AND VERIFYING ALL EXISTING UTILITIES PRIOR TO CONSTRUCTION, AND FOR NOTIFYING THE VARIOUS UTILITY COMPANIES TO MAKE THE NECESSARY ARRANGEMENTS FOR ANY RELOCATION, DISRUPTION OF SERVICE, OR CLARIFICATION OF UTILITY ACTIVITY. THE CONTRACTOR SHALL EXERCISE CAUTION WHEN CROSSING A UTILITY, WHETHER UNDERGROUND OR OVERHEAD, WHETHER SHOWN ON THESE PLANS OR FIELD LOCATED. UTILITIES WHICH INTERFERE WITH THE PROPOSED CONSTRUCTION SHALL BE RELOCATED BY THE RESPECTIVE UTILITY COMPANY AND THE CONTRACTOR SHALL COOPERATE WITH THE UTILITY COMPANY DURING RELOCATION OPERATIONS. ANY DELAY OR INCONVENIENCE BY THE VARIOUS UTILITIES SHALL BE INCIDENTAL TO THE CONTRACT.
14. PRIOR TO EXCAVATING IN THE VICINITY OF A GAS PIPELINE THE CONTRACTOR SHALL NOTIFY THE GAS UTILITY AND ORANGE COUNTY IN ACCORDANCE WITH THE REQUIREMENTS OF THE FLORIDA STATUTES, PROTECTION OF UNDERGROUND PIPELINES, F.S. 553.851, CH. 77-143.
15. THE CONTRACTOR SHALL NOTIFY UTILITIES 72 HOURS PRIOR TO EXCAVATION IN ACCORDANCE WITH THE FLORIDA UNDERGROUND FACILITIES DAMAGE PREVENTION AND SAFETY ACT, F.S. 556.101-116. THE CONTRACTOR SHALL CALL SUNSHINE STATE ONE CALL OF FLORIDA A MINIMUM OF 48 HOURS PRIOR TO THE COMMENCEMENT OF WORK. SUNSHINE STATE ONE CALL OF FLORIDA (SSOCOF): 1-800-432-4770.

UTILITIES ENCOUNTERED INCLUDE:

OWNER	TELEPHONE
AT&T	407-578-8000
AT&T - DISTRIBUTION	407-351-8180
BRIGHT HOUSE NETWORKS	407-448-5506
CITY OF ORLANDO - BUREAU OF WASTEWATER	407-246-3722
FLA. GAS TRANS.	407-838-7171
MCI	972-729-6322
ORLANDO ORANGE COUNTY EXPRESSWAY AUTHORITY	407-316-3800
ORLANDO UTILITIES COMMISSION - WATER	407-434-2558
ORLANDO UTILITIES COMMISSION - ELECTRIC	407-434-6537
TECO PEOPLES GAS	407-420-2675

16. ALL EXISTING DRAINAGE STRUCTURES AND PIPES WITHIN THE LIMITS OF CONSTRUCTION SHALL REMAIN, UNLESS OTHERWISE SHOWN IN THE PLANS OR DIRECTED BY THE ENGINEER.
17. ALL (P.R.M.'s) IRONS AND MONUMENTS SHOWN ON PLANS, OR FOUND, SHALL BE PRESERVED. THOSE SHOWN IN PROPOSED PAVEMENT SHALL BE PROTECTED WITH CAST IRON VALVE BOX.
18. PUBLIC LAND CORNERS WITHIN THE LIMITS OF CONSTRUCTION SHALL BE PROTECTED. IF A CORNER MONUMENT IS IN DANGER OF BEING DESTROYED OR DISTURBED, THE CONTRACTOR SHALL NOTIFY THE PROJECT ENGINEER AND THE COUNTY SURVEYOR, WITHOUT DELAY, BY TELEPHONE 407-836-7940. THE CONTRACTOR SHALL PROVIDE WRITTEN FOLLOW UP CONFIRMATION WITHIN 48 HOURS OF TELEPHONE NOTIFICATION.
19. ANY U.S.C. AND G.S. MONUMENTS WITHIN THE LIMITS OF CONSTRUCTION SHALL BE PROTECTED. IF IN DANGER OF DAMAGE, THE CONTRACTOR SHALL NOTIFY THE PROJECT ENGINEER, AND BOTH SHALL NOTIFY:

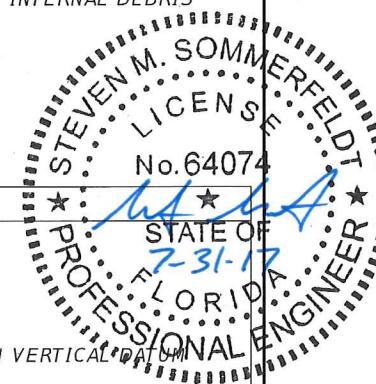
STATE GEODETIC ADVISOR
 c/o FDEP, BUREAU OF SURVEY AND MAPPING
 3900 COMMONWEALTH BLVD., MS 105
 TALLAHASSEE, FL 32399-300
 PHONE 850-245-2606
 FAX 850-245-2645

20. PRIOR TO BEGINNING ANY CONSTRUCTION, THE CONTRACTOR SHALL SUBMIT TO ORANGE COUNTY A SET OF FIELD NOTES VERIFYING THE BENCHMARK ELEVATIONS AND THE REFERENCE POINT TIES SHOWN ON THE PROJECT LAYOUT SHEET AND PLAN AND PROFILE SHEETS, AND/OR A SET OF FIELD NOTES FOR ALL ADDITIONAL BENCHMARK AND REFERENCE POINT TIES PROPOSED TO BE USED IN CONSTRUCTING THE PROJECT WITH THEIR LOCATION, DESCRIPTION AND ELEVATION, BASED ON ORANGE COUNTY DATUM. ALL SUBMITTALS SHALL BE SIGNED AND SEALED BY A PROFESSIONAL LAND SURVEYOR REGISTERED IN THE STATE OF FLORIDA.

21. WITHIN 7 CALENDAR DAYS AFTER NOTICE TO PROCEED, THE CONTRACTOR SHALL STAKE THE RIGHT-OF-WAY/DRAINAGE EASEMENTS AT 100' INTERVALS AND AT RIGHT-OF-WAY BREAKS WITH STATIONING SHOWN ON THE STAKES. NO INVOICE FOR PAYMENT WILL BE PROCESSED UNTIL THE RIGHT-OF-WAY/DRAINAGE EASEMENT HAS BEEN STAKED TO THE SATISFACTION OF THE ENGINEER. PAYMENT IS INCLUDED IN THE PRICE BID FOR ITEM NO. 101-1 "MOBILIZATION".
22. EXISTING TRAFFIC SIGNS SHALL REMAIN IN PLACE OR BE RELOCATED AS NEEDED BY THE CONTRACTOR UNTIL THE NEW SIGNS ARE INSTALLED. THE EXISTING SIGNS SHALL BE REMOVED BY THE CONTRACTOR AND DELIVERED TO THE ORANGE COUNTY SIGN SHOP AT 4200 SOUTH JOHN YOUNG PARKWAY. COST OF RELOCATION, MAINTENANCE, REMOVAL, AND LEFTOVER SHALL BE INCLUDED IN THE PRICE BID FOR ITEM 102-1, MAINTENANCE OF TRAFFIC.
23. CONTRACTOR TO VIDEOTAPE AND PHOTOGRAPH THE LIMITS OF CONSTRUCTION BEFORE AND AFTER CONSTRUCTION AND PROVIDE A COPY TO THE COUNTY. COST TO BE INCLUDED IN THE PRICE BID FOR ITEM NO. 101-1, MOBILIZATION.
24. THE CONTRACTOR IS TO PROVIDE A WRITTEN DEWATERING PLAN WITH SCHEMATIC DRAWINGS TO THE COUNTY 2 WEEKS PRIOR TO MOBILIZATION FOR REVIEW AND APPROVAL. ALL COUNTY COMMENTS SHALL BE INCORPORATED INTO THE PLAN. COST TO PROVIDE THIS PLAN SHALL BE INCLUDED IN THE PRICE BID FOR PAY ITEM NO. 101- 1 MOBILIZATION. REFER TO THE STORMWATER POLLUTION PREVENTION SHEETS FOR FURTHER DEWATERING REQUIREMENTS.
25. THE CONTRACTOR WILL BE RESPONSIBLE FOR PROVIDING TEMPORARY DRAINAGE AND MAINTENANCE OF ALL EXISTING RUNOFF DISCHARGES DURING CONSTRUCTION TO AVOID THE TRANSPORT OF SEDIMENT AND ERODIBLE SOILS UNTIL THE WORK HAS BEEN ACCEPTED BY THE COUNTY.
26. THE CONTRACTOR SHALL BE RESPONSIBLE FOR A STAGING AREA (APPROVED BY THE ENGINEER) TO STORE EQUIPMENT, SUPPLIES, & MATERIALS, PROVIDE EMPLOYEE PARKING, ETC. FOR THE DURATION OF CONSTRUCTION. THE USE OF EXISTING COUNTY EASEMENTS AND RIGHT OF WAY SHOULD BE REQUESTED IN WRITING TO THE COUNTY FOR APPROVAL. IT IS THE RESPONSIBILITY OF THE CONTRACTOR TO KEEP THE HOA INFORMED IN REGARDS TO STAGING AREAS, PROJECT DURATION AND REMOVAL OR REPLACEMENT OF FENCE.
27. THE CONTRACTOR SHALL BE RESPONSIBLE FOR THE DESIGN OF THE JACK & BORE SYSTEM. THE JACK & BORE SYSTEM DESIGN SHALL MEET THE REQUIREMENTS OF SECTION 556 OF THE FDOT STANDARD SPECIFICATIONS, CHAPTER 7 OF THE "STRUCTURES DESIGN GUIDELINES", AND FDOT UTILITY ACCOMMODATION MANUAL (2010). REFER TO THE SOIL PROFILES SHEETS FOR SOILS DATA (TB-1 AND TB-2) AT JACK & BORE PIT LOCATIONS. THE ENVIRONMENTAL CLASSIFICATION FOR THE DESIGN FOR BOTH STEEL AND CONCRETE PIPES AND ANY ASSOCIATED MINOR STRUCTURES IS "SLIGHTLY AGGRESSIVE".
28. ALL EXISTING SIGNS ARE TO REMAIN UNLESS OTHERWISE NOTED ON THE PLANS.
29. THE PAVEMENT MARKINGS AT ALL EXISTING / PROPOSED INTERFACE LOCATIONS ARE TO MATCH IN TERMS OF ALIGNMENT.
30. THE CONTRACTOR SHALL INSPECT ALL EXISTING DRAINAGE PIPES AND STRUCTURES TO BE UTILIZED WITHIN CONSTRUCTION LIMITS AND REMOVE ANY INTERNAL DEBRIS AND SAND/SILT THEREFROM

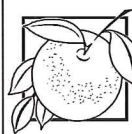
LEGEND ABBREVIATIONS

ACB = ARTICULATED CONCRETE BLOCK	EX = EXISTING
\square = BASELINE	FD = FRENCH DRAIN
BE = BURIED ELECTRIC	INV = INVERT
BT = BURIED TELEPHONE	IRC = IRON ROD & CAP
BTV = BURIED TELEVISION	LT = LEFT
CIP = CAST-IN-PLACE	NAVD= NORTH AMERICAN VERTICAL DATUM
$\underline{\text{c}}$ = CENTERLINE	NTS = NOT TO SCALE
CMP = CORRUGATED METAL PIPE	POT = POINT ON TANGENT
CONC = CONCRETE	RT = RIGHT
D.E. = DRAINAGE EASEMENT	SHWL= SEASONAL HIGH GROUNDWATER LEVEL
EFD = ELLIPTICAL FRENCH DRAIN	STA = STATION
EL = ELEVATION	TOE = TOE OF SLOPE
EP = EDGE OF PAVEMENT	TOB = TOP OF BANK
ERCPC = ELLIPTICAL REINFORCED CONCRETE PIPE	U.E. = UTILITY EASEMENT



REVISIONS		
DATE	BY	DESCRIPTION

**BARRY STREET
DRAINAGE IMPROVEMENTS**



**ORANGE COUNTY
GOVERNMENT
FLORIDA**



Steven M. Sommerfeldt, PE 3000 Dovera Drive, Suite 200
 PE No. 64074 Oviedo, Florida 32765
 Certificate of Authorization No. 7074 p. 407.971.8850

GENERAL NOTES

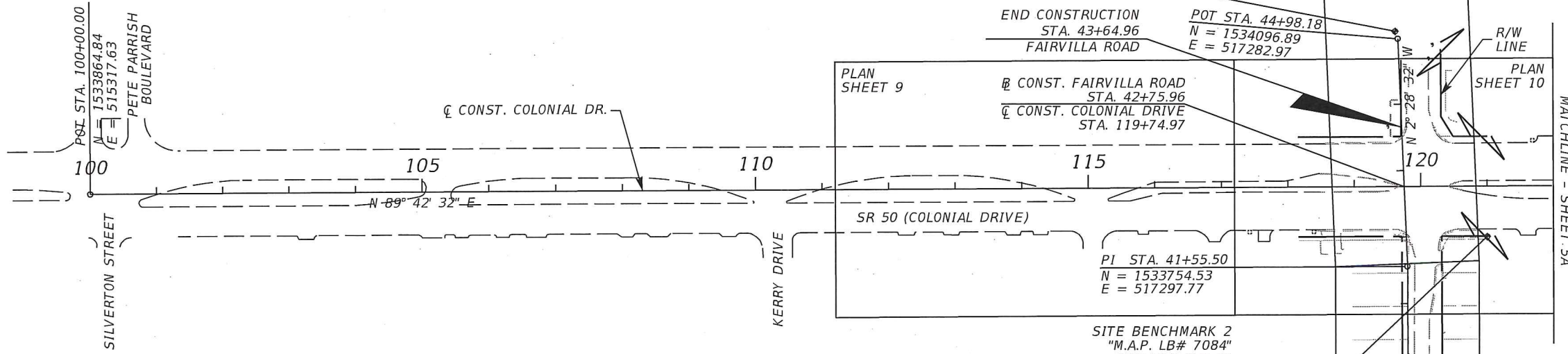
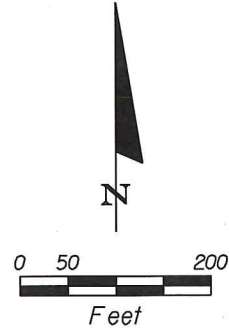
SHEET
NO.

4

SITE SURVEY PROVIDED BY:
 GEODATA CONSULTANTS, INC.
 1349 S INTERNATIONAL PARKWAY, STE. 2401
 LAKE MARY, FLORIDA 32746
 (407) 732-6965
 DATUM: NAVD88
 DATE: 02/29/2016

UTILITY SURVEY PROVIDED BY:
 SOUTHEASTERN SURVEYING AND MAPPING CORPORATION
 6500 ALL AMERICAN BOULEVARD
 ORLANDO, FL 32810
 (407) 292-8580
 DATUM: NAVD88
 DATE: 10/28/2016

SITE BENCHMARK 1
 SET BOX CUT IN
 CENTERLINE OF SIDEWALK
 WEST SIDE OF FAIRVILLA ROAD
 275± NORTH OF COLONIAL DRIVE
 N: 1534150.00
 E: 517280.00
 EL = 100.20' (NAVD)
 NOT SHOWN TO SCALE



PLAN SHEET 9

PLAN SHEET 8

PLAN SHEET 10

MATCHLINE - SHEET 5A

POT STA. 44+98.18
 N = 1534096.89
 E = 517282.97

END CONSTRUCTION
 STA. 43+64.96
 FAIRVILLA ROAD

CONST. FAIRVILLA ROAD
 STA. 42+75.96
 CONST. COLONIAL DRIVE
 STA. 119+74.97

PI STA. 41+55.50
 N = 1533754.53
 E = 517297.77

SITE BENCHMARK 2
 "M.A.P. LB# 7084"
 SET BOX CUT IN
 TOP OF CONCRETE WALL/CURB
 IN FRONT OF LARGE BUSINESS SIGN
 SOUTH SIDE OF COLONIAL DRIVE
 80' ± EAST OF FAIRVILLA ROAD
 N: 1533799.45
 E: 517418.34
 EL = 100.34' (NAVD)
 STA. 41+95.00
 OFF: 122.00' RT

POT STA. 10+00.00
 N = 1533234.94
 E = 516813.96

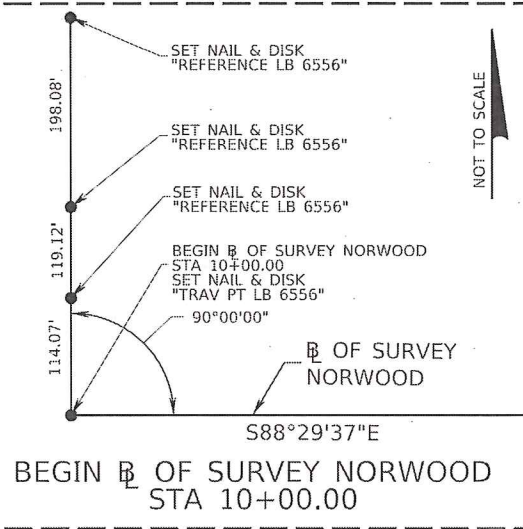
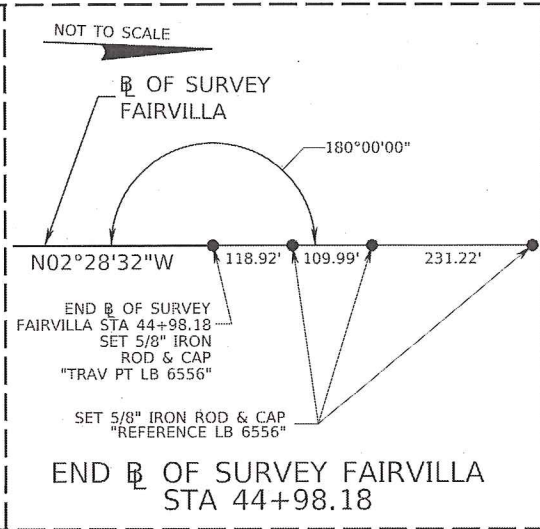
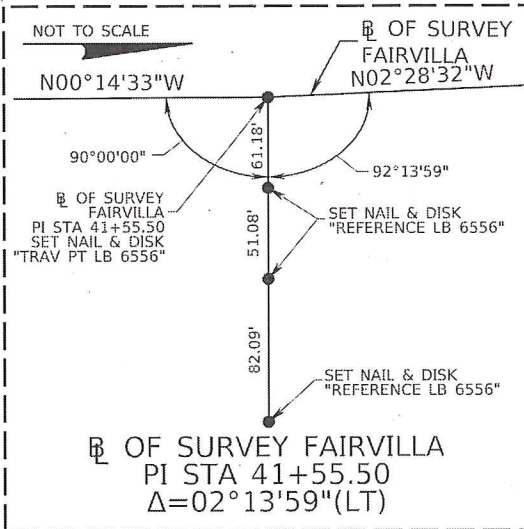
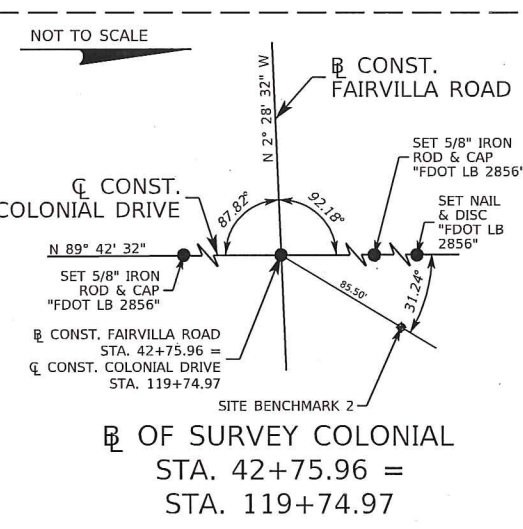
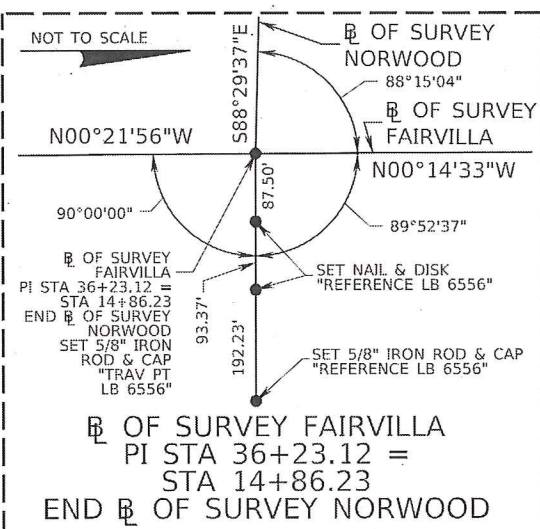
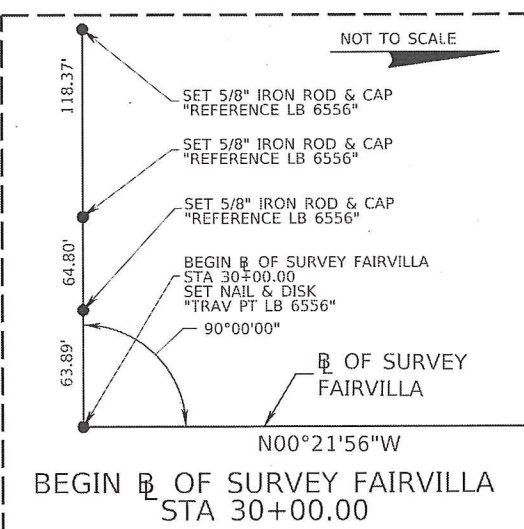
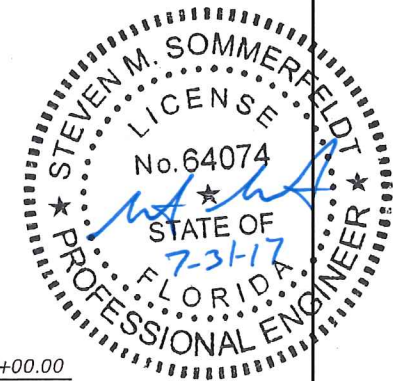
PLAN SHEET 7
 CONST. FAIRVILLA ROAD
 STA. 36+23.12
 CONST. NORWOOD STREET
 STA. 14+86.23
 N = 1533222.16
 E = 517300.02

BEGIN CONSTRUCTION
 STA. 34+96.84
 FAIRVILLA ROAD

PI STA. 36+23.12
 N = 1533222.16
 E = 517300.02

SITE BENCHMARK 3
 SET BOX CUT IN
 NORTH EDGE OF CONCRETE DRIVE
 SOUTH SIDE OF NORWOOD STREET
 50' ± EAST OF FAIRVILLA ROAD
 N: 1533202.78
 E: 517382.09
 EL = 98.96' (NAVD)
 STA. 36+03.00
 OFF: 82.00' RT

SITE BENCHMARK 4
 SET BOX CUT IN
 NORTHWEST CORNER
 OF CATCH BASIN
 50' ± NORTH OF FAIRMONT STREET
 & WEST SIDE OF FAIRVILLA ROAD
 N: 1532694.02
 E: 517298.39
 EL = 98.74' (NAVD)
 STA. 30+95.00
 OFF: 5.00' LT



REVISIONS		
DATE	BY	DESCRIPTION

**BARRY STREET
DRAINAGE IMPROVEMENTS**

**ORANGE COUNTY
GOVERNMENT
FLORIDA**

Inwood
consulting engineers

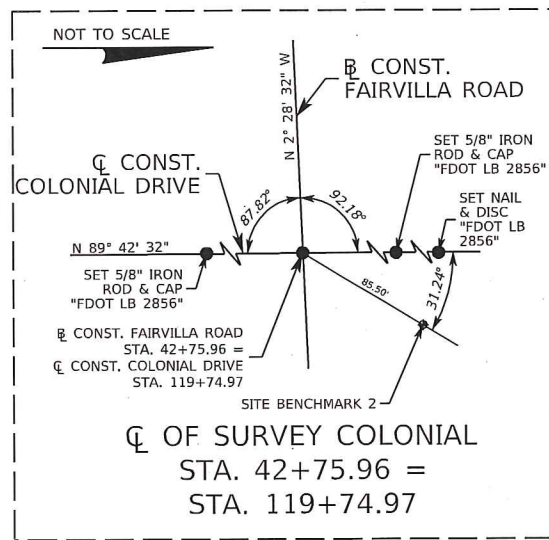
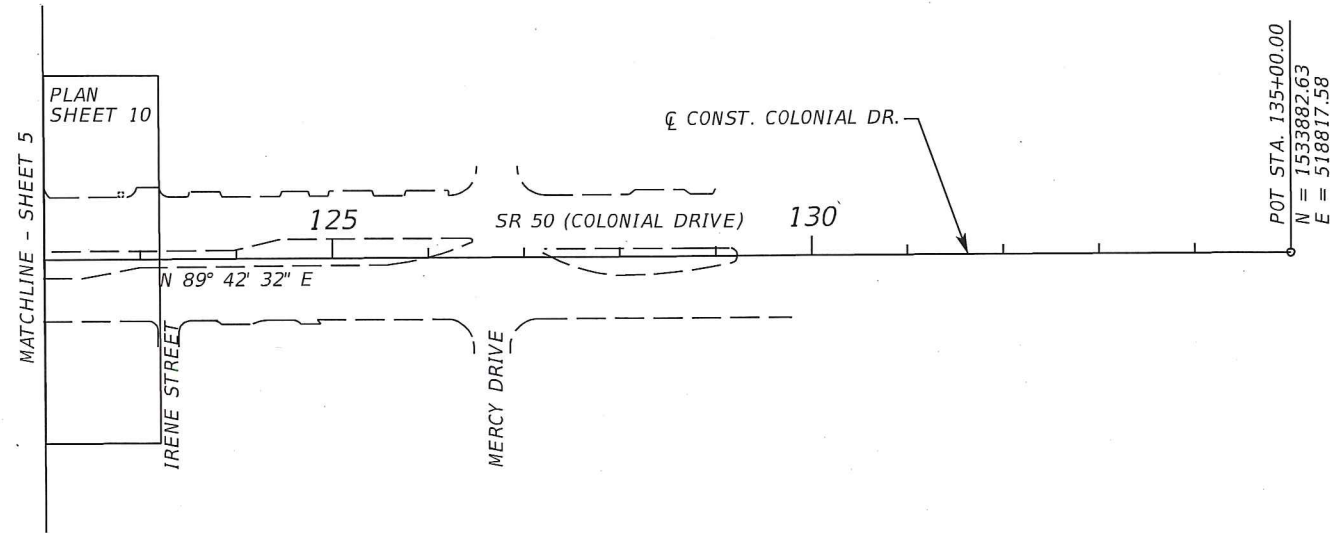
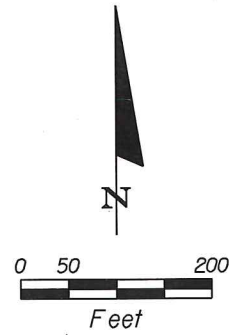
Steven M. Sommerfeldt, PE 3000 Dovers Drive, Suite 200
 PE No. 64074 Oviedo, Florida 32765
 Certificate of Authorization No. 7074 p 407.971.8850

PROJECT LAYOUT

SHEET
NO.

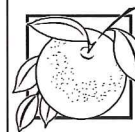
5

SITE SURVEY PROVIDED BY:
 GEODATA CONSULTANTS, INC.
 1349 S INTERNATIONAL PARKWAY, STE. 2401
 LAKE MARY, FLORIDA 32746
 (407) 732-6965
 DATUM: NAVD88
 DATE: 02/29/2016



REVISIONS		
DATE	BY	DESCRIPTION

**BARRY STREET
 DRAINAGE IMPROVEMENTS**



ORANGE COUNTY
 GOVERNMENT
 FLORIDA

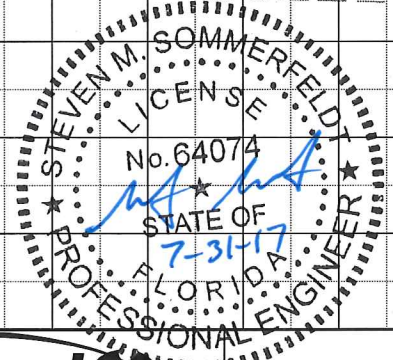
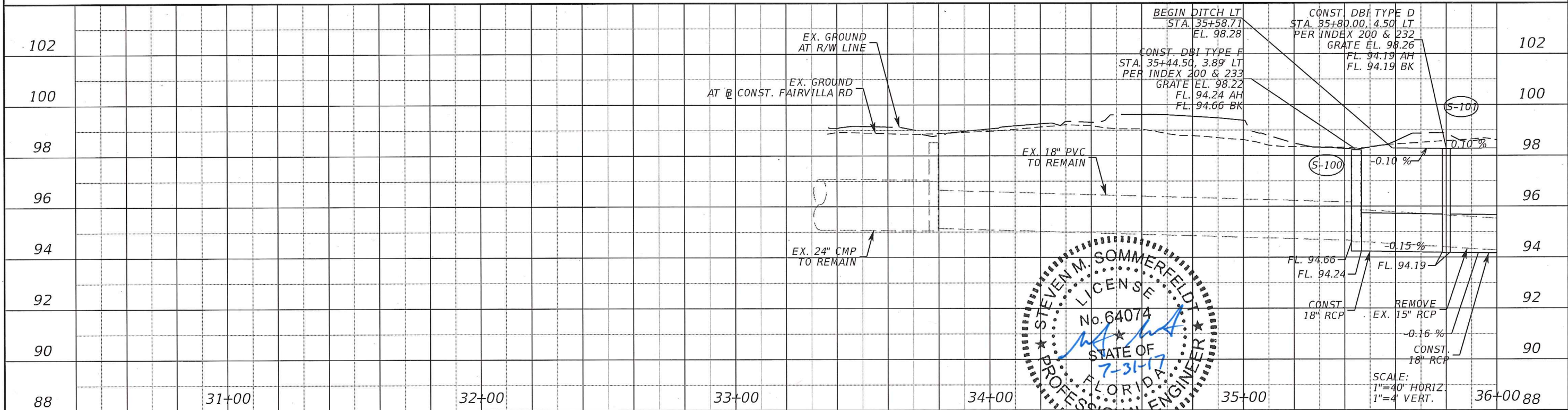
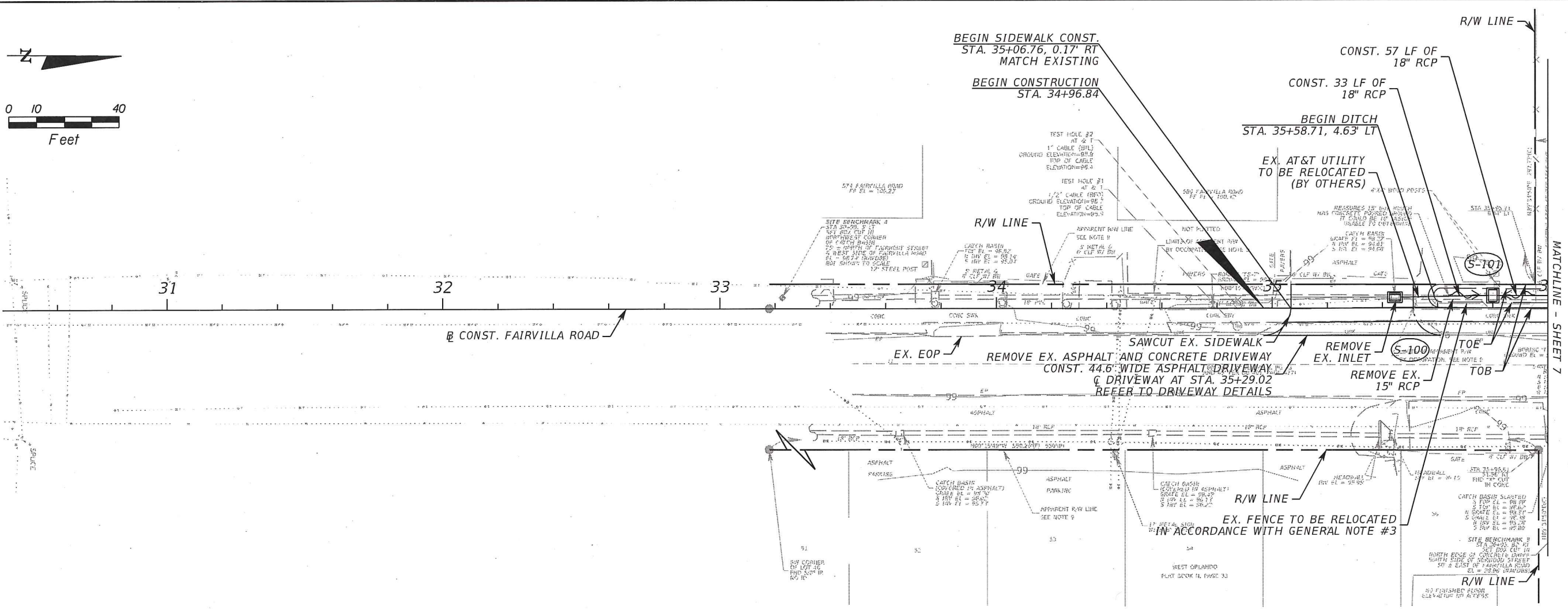
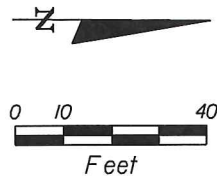


Steven M. Sommerfeldt, PE 3000 Dovera Drive, Suite 200
 PE No. 64074 Oviedo, Florida 32765
 Certificate of Authorization No. 7074 p. 407.971.8850

PROJECT LAYOUT

SHEET NO.

5A



REVISIONS		
DATE	BY	DESCRIPTION

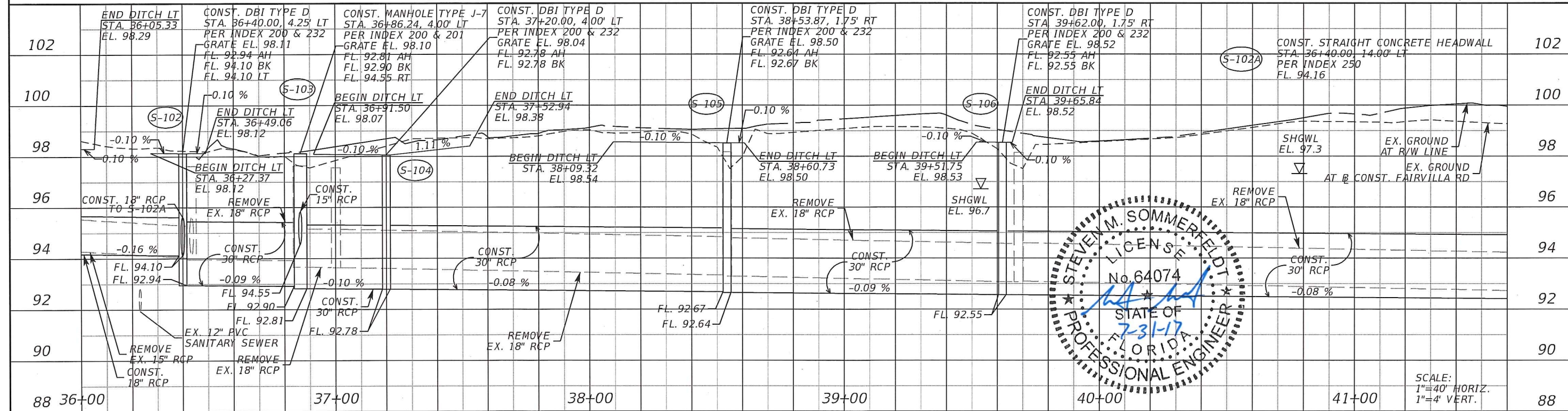
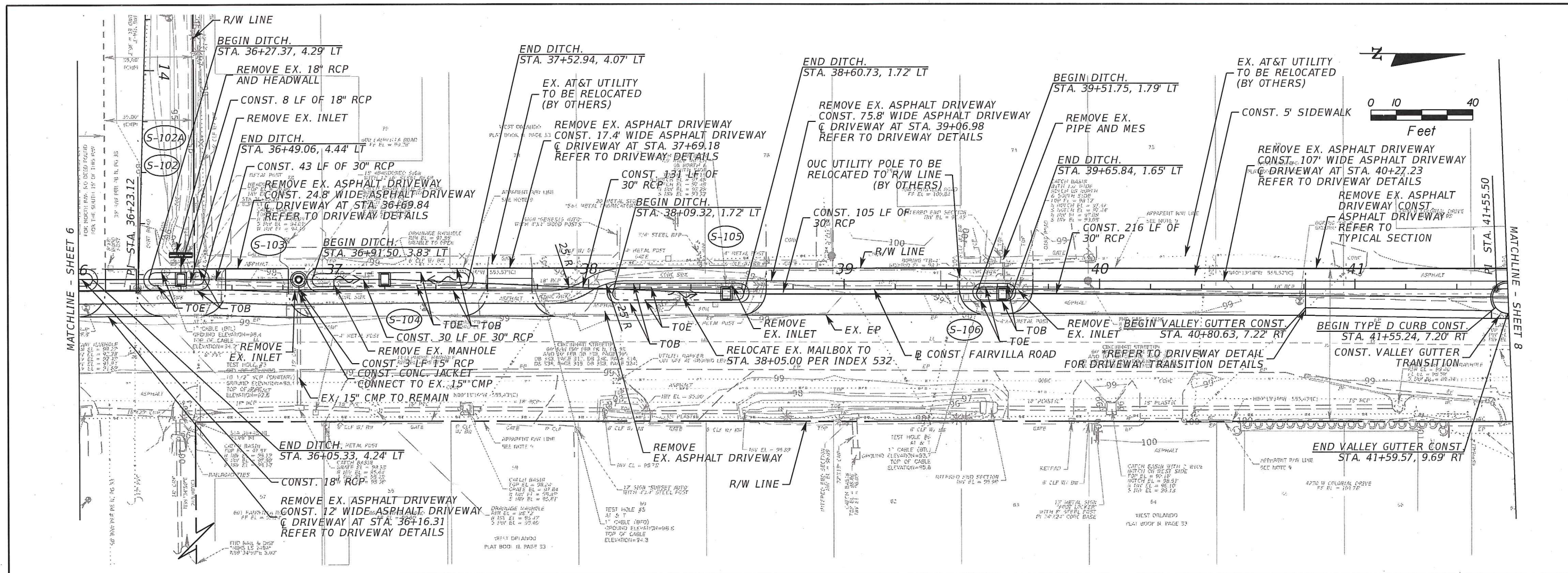
**BARRY STREET
DRAINAGE IMPROVEMENTS**



Inwood
consulting engineers
Steven M. Sommerfeldt, PE 3000 Dovera Drive, Suite 200
PE No. 64074 Oviedo, Florida 32765
Certificate of Authorization No. 7074 p 407.971.8950

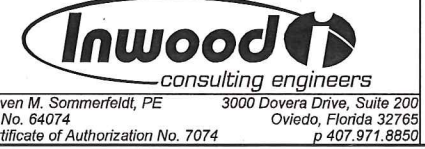
**PLAN / PROFILE SHEET
FAIRVILLA ROAD**

SHEET NO.
6



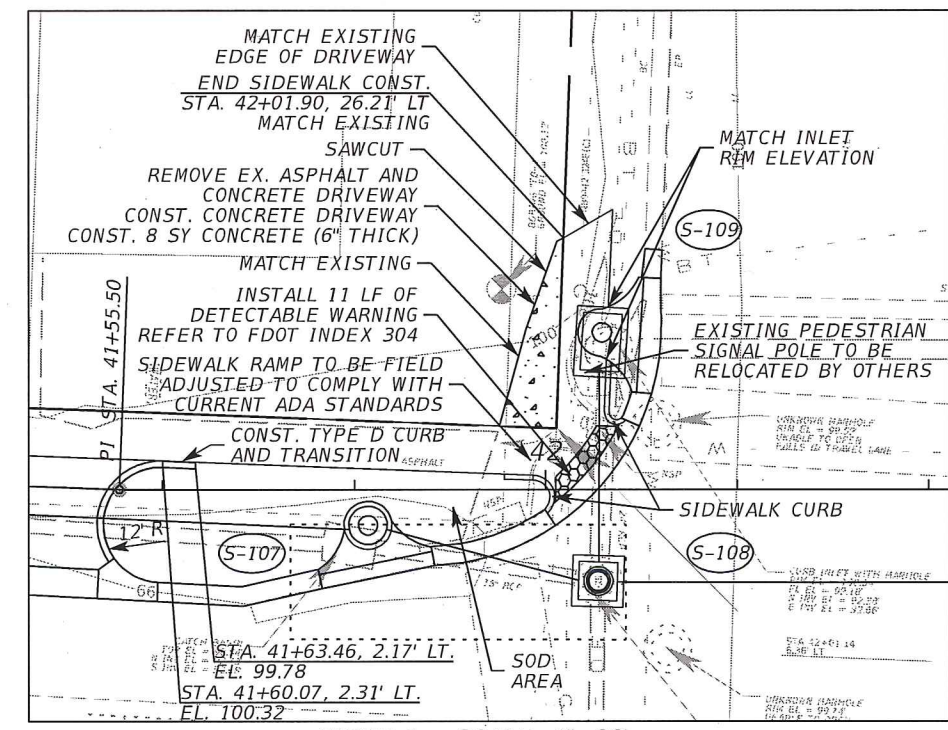
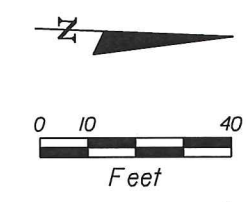
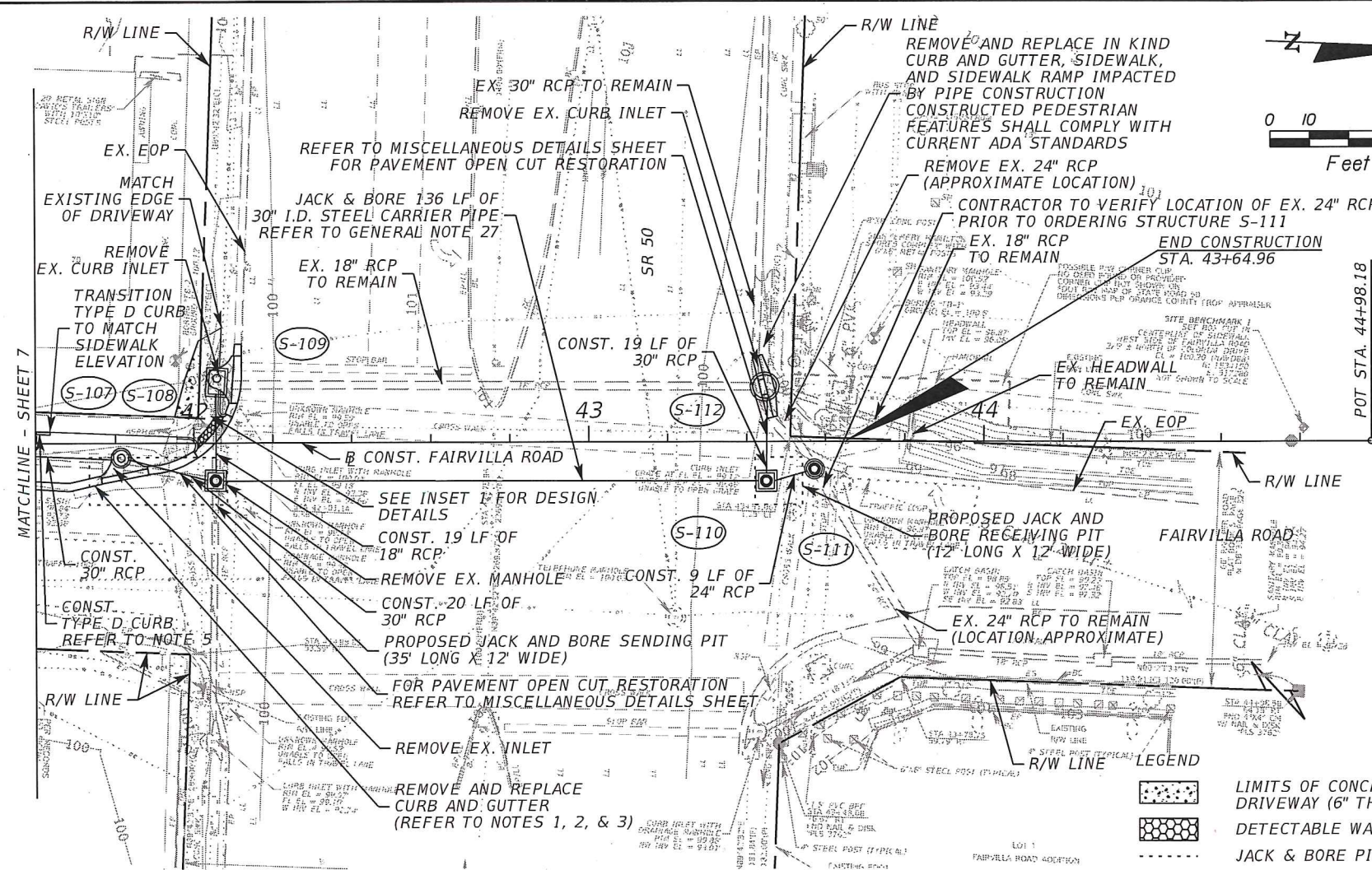
REVISIONS		
DATE	BY	DESCRIPTION

**BARRY STREET
DRAINAGE IMPROVEMENTS**



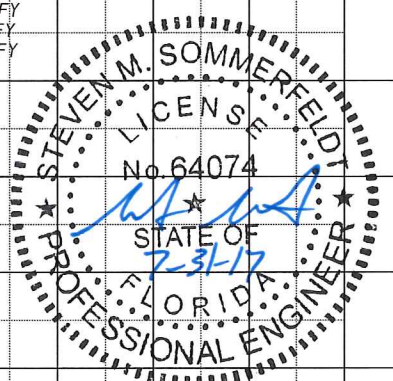
**PLAN / PROFILE SHEET
FAIRVILLA ROAD**

SHEET
NO.
7



- NOTES:
- TYPE F CURB AND GUTTER
BEGIN CONST. STA. 41+59.57, 9.43' RT
END CONST. STA. 41+76.24, 8.36' RT
 - TYPE F CURB AND GUTTER
BEGIN CONST. STA. 41+88.00, 5.97' RT
END CONST. STA. 41+99.93, 2.10' RT
 - DROP CURB
BEGIN CONST. STA. 41+99.93, 2.10' RT
END CONST. STA. 42+07.91, 7.43' LT
 - CONSTRUCT 3' TRANSITION FROM EDGE OF INLET TO ADJACENT CURB (BOTH SIDES).
 - TYPE D CURB
BEGIN CONST. STA. 41+55.24, 7.20' RT
END CONST. STA. 41+63.46, 2.17' LT (INCLUDES TRANSITION)
 - REFER TO SHEET 34 FOR UTILITY ADJUSTMENTS
 - PAVEMENT DAMAGED DURING DRAINAGE STRUCTURE / PIPE INSTALLATION SHALL BE REPLACED PER THE PAVEMENT DESIGN PER THE MISCELLANEOUS DETAILS SHEET

102	CONST. CURB INLET TYPE P-4 (4' DIA.) STA. 41+82.53, 9.15' RT PER INDEX 200, 201 & 210 RIM EL. 99.22 E/P EL. 98.84 FL. 92.38 AH FL. 92.38 BK	EX. GROUND AT CONST. FAIRVILLA RD	CONST. MANHOLE TYPE J-8 (4' X 4') STA. 43+45.00, 10.00' RT PER INDEX 200 & 201 RIM EL. 99.82 FL. 92.51 AH FL. 92.22 BK FL. 92.22 LT	CONST. MANHOLE TYPE P-8 (4' DIA.) STA. 43+57.16, 7.03' RT PER INDEX 200 & 201 RIM EL. 99.04 FL. 92.56 BK FL. +/- 92.56 RT - CONTRACTOR TO VERIFY	CONST. MANHOLE TYPE J-8 (4' X 4') STA. 42+05.51, 9.60' RT PER INDEX 200 & 201 RIM EL. 99.42 FL. 92.36 AH FL. +/- 92.36 BK - CONTRACTOR TO VERIFY FL. +/- 92.36 LT - CONTRACTOR TO VERIFY FL. +/- 92.67 RT - CONTRACTOR TO VERIFY	102
100	(S-107)	(S-108)	(S-110)	(S-111)	(S-109)	100
98	SHGWL EL. 97.8	EX. BURIED TELEPHONE LINE (UNKNOWN EL.)	EX. BURIED TELEPHONE LINE (UNKNOWN EL.)	EX. OUC WATER MAIN	SHGWL EL. 97.5	98
96	EX. TECO GAS MAIN	EX. AT&T TELEPHONE DUCT BANK	EX. AT&T TELEPHONE DUCT BANK	CONST. 30" RCP TO S-112	EX. GROUND AT R/W LINE	96
94	EX. BURIED TELEPHONE LINE	EX. OUC WATER MAIN	EX. 18" RCP TO REMAIN	EX. HEADWALL TO REMAIN	EX. 18" RCP TO REMAIN	94
92	EX. 18" RCP TO REMAIN	CONST. 18" RCP FROM S-109	30" STEEL CARRIER PIPE	EX. BURIED TELEPHONE LINE (UNKNOWN EL.)	EX. AT&T BURIED TELEPHONE LINE	92
90	FL. 92.67	FL. 92.36	-0.13 %	EX. 6" PVC / CLAY SANITARY SEWER	FL. 92.55	90
88	CONST. 30" RCP	REMOVE EX. 18" RCP	CONST. 30" RCP	EX. BURIED FIBER OPTIC LINE (APPROXIMATE EL.)	CONST. 24" RCP	88
	FL. 92.38	FL. 92.22	-0.44 %	FL. 92.51		
	42+00	43+00	44+00	45+00		



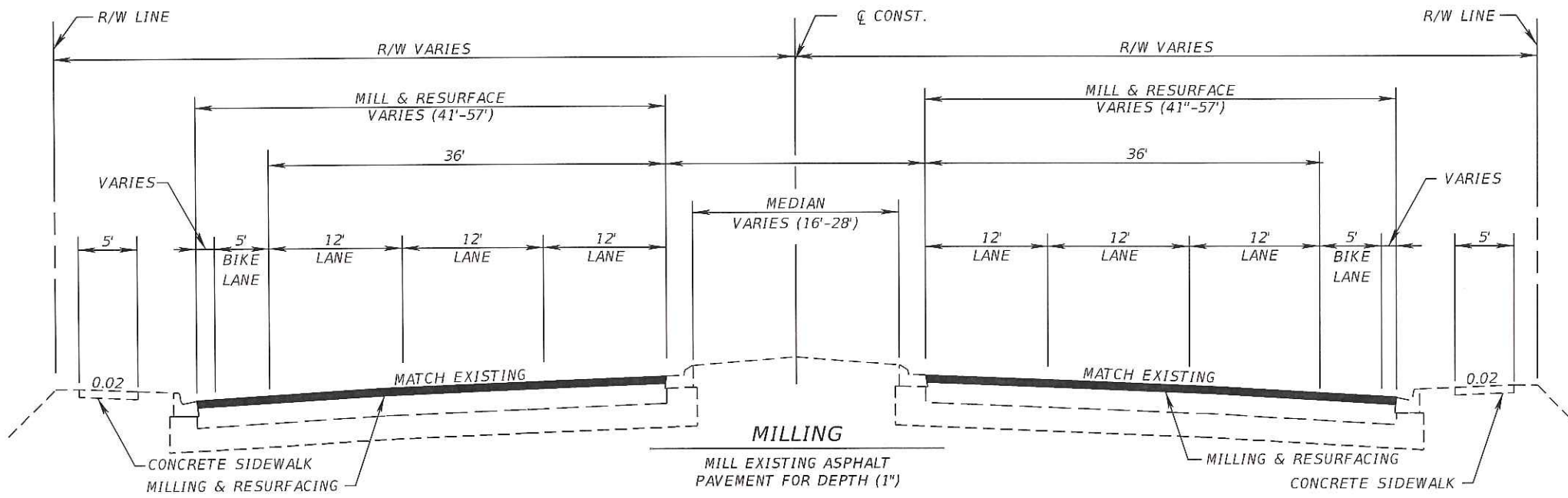
REVISIONS		
DATE	BY	DESCRIPTION

**BARRY STREET
DRAINAGE IMPROVEMENTS**



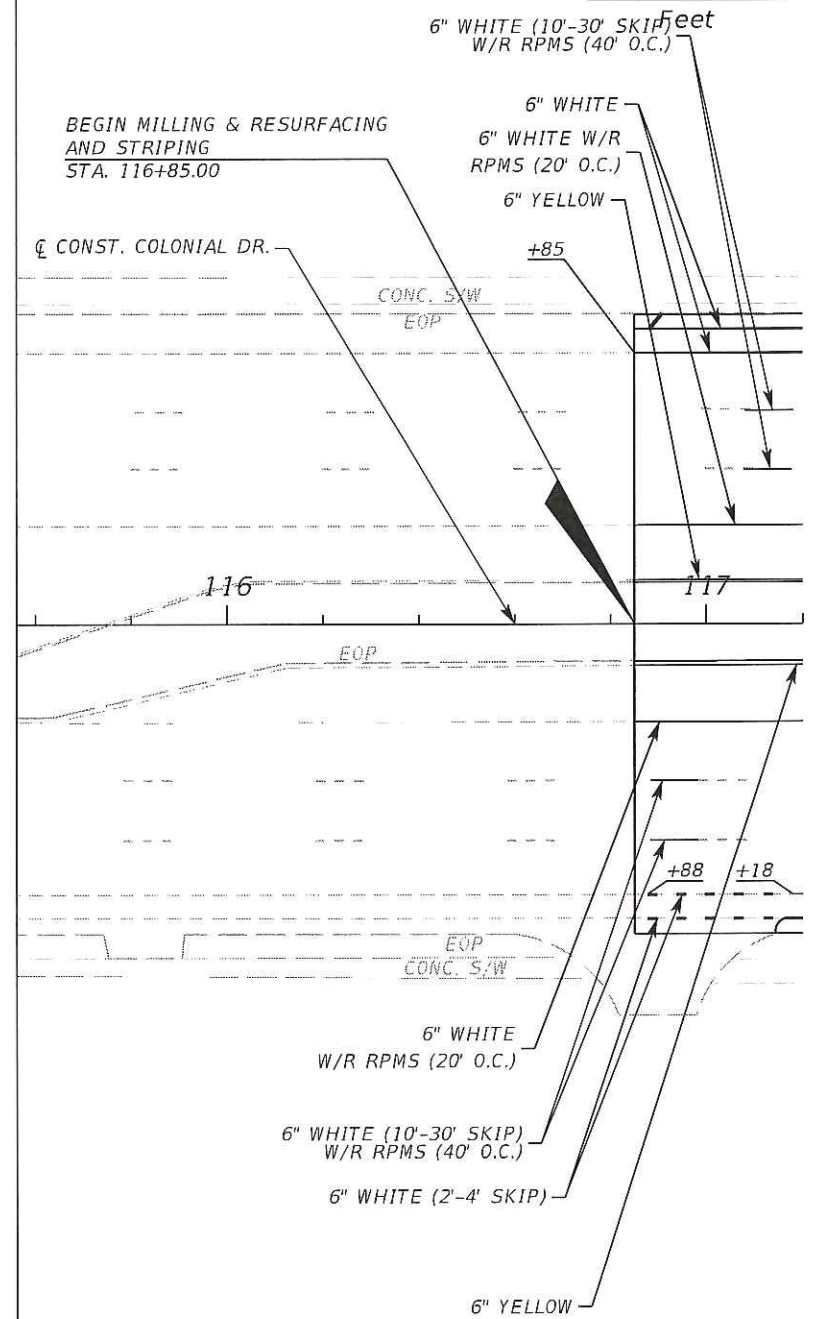
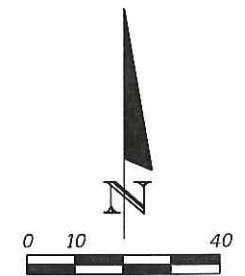
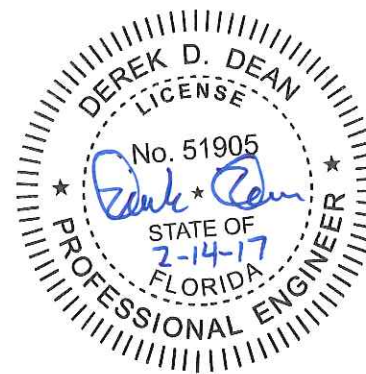
Inwood consulting engineers
Steven M. Sommerfeldt, PE 3000 Dovera Drive, Suite 200
PE No. 64074 Oviedo, Florida 32765
Certificate of Authorization No. 7074 p. 407.971.6890

**PLAN / PROFILE SHEET
FAIRVILLA ROAD**



FRICTION COURSE FC-9.5 (TRAFFIC C) (1") (PG 76-22)

TYPICAL SECTION
 SR 50 (COLONIAL DR)
 STA. 116+85.00 TO STA. 123+18.00



REVISIONS		
DATE	BY	DESCRIPTION

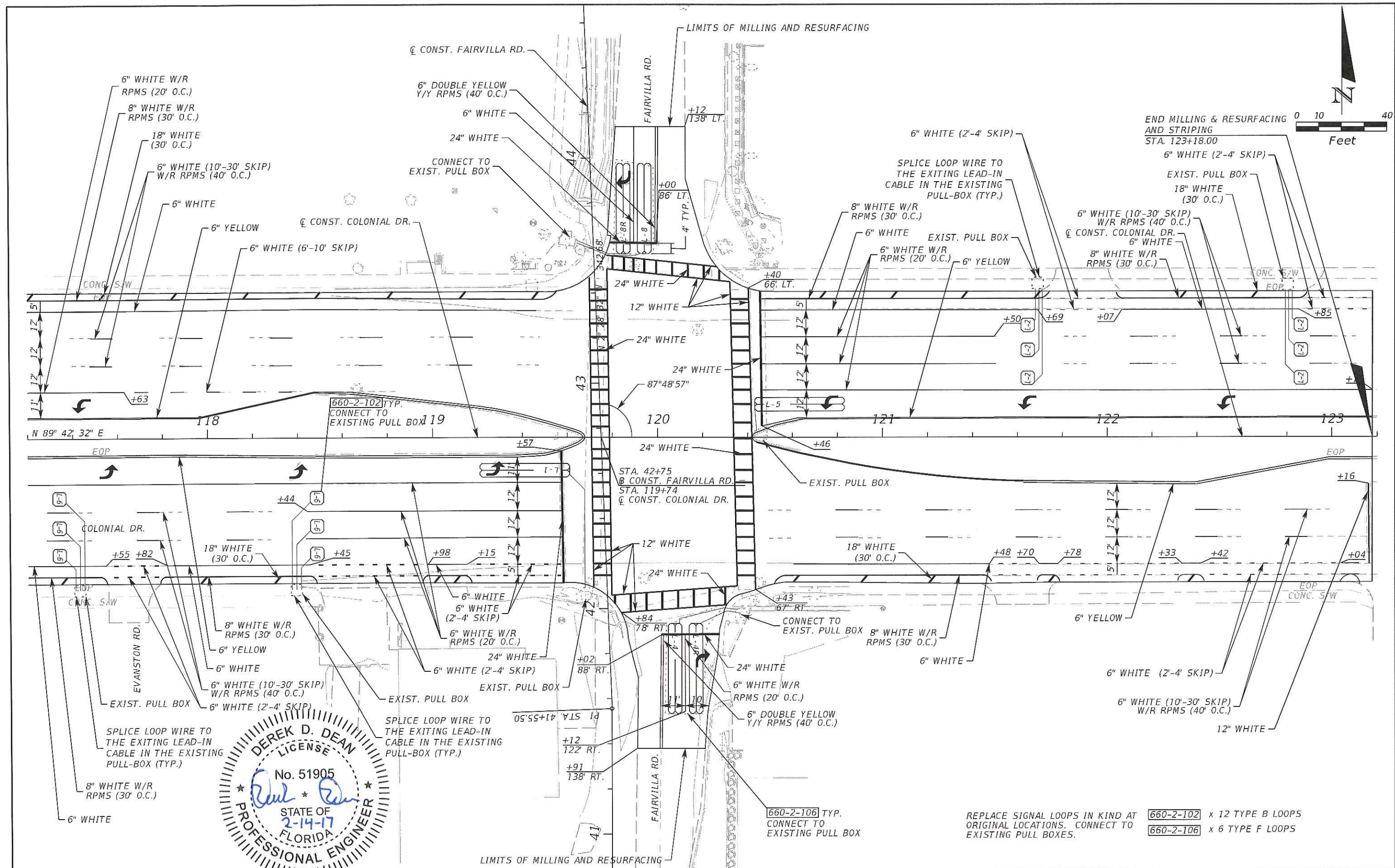
**BARRY STREET
 DRAINAGE IMPROVEMENTS**



Derek D. Dean, PE
 PE No. 51905
 Certificate of Authorization No. 7074
 3000 Dovera Drive, Suite 200
 Oviedo, Florida 32765
 p 407.971.8850

**TYPICAL SECTION/PLAN SHEET
 COLONIAL DRIVE**

SHEET NO.
 9



REVISIONS		
DATE	BY	DESCRIPTION

**BARRY STREET
DRAINAGE IMPROVEMENTS**



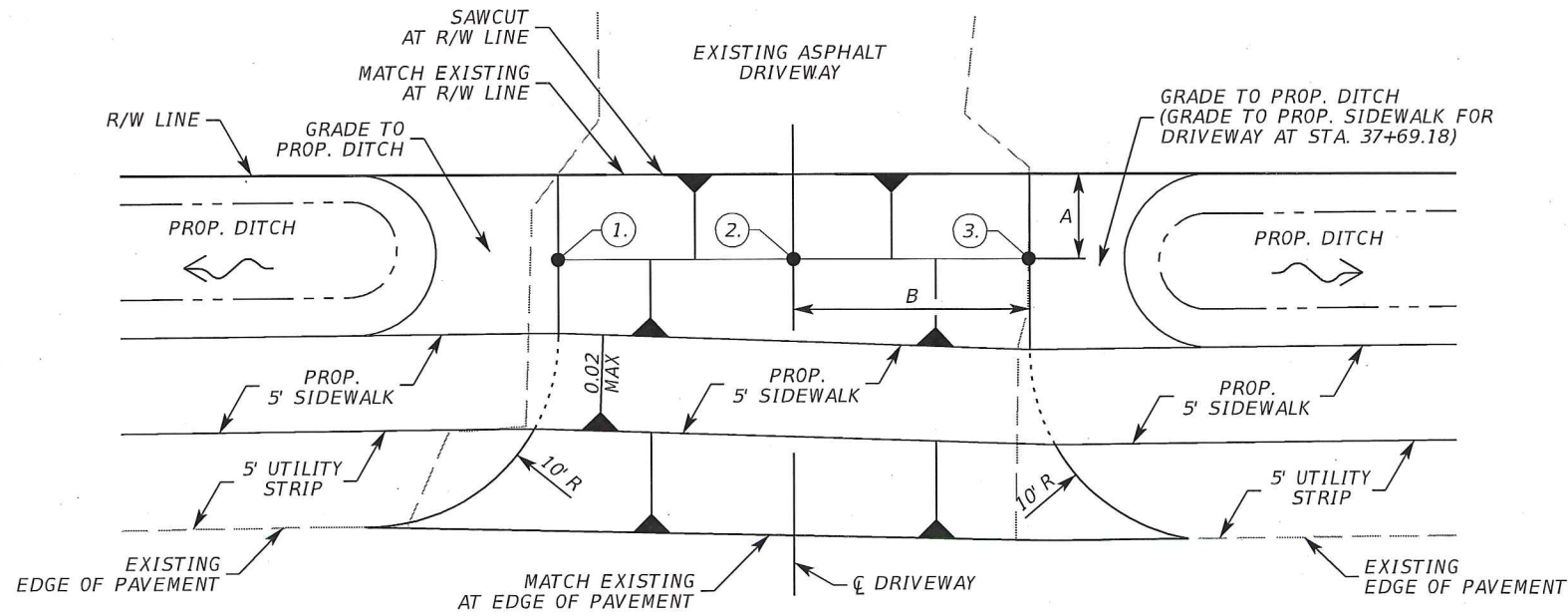
**PLAN SHEET
COLONIAL DRIVE**

SHEET
NO.

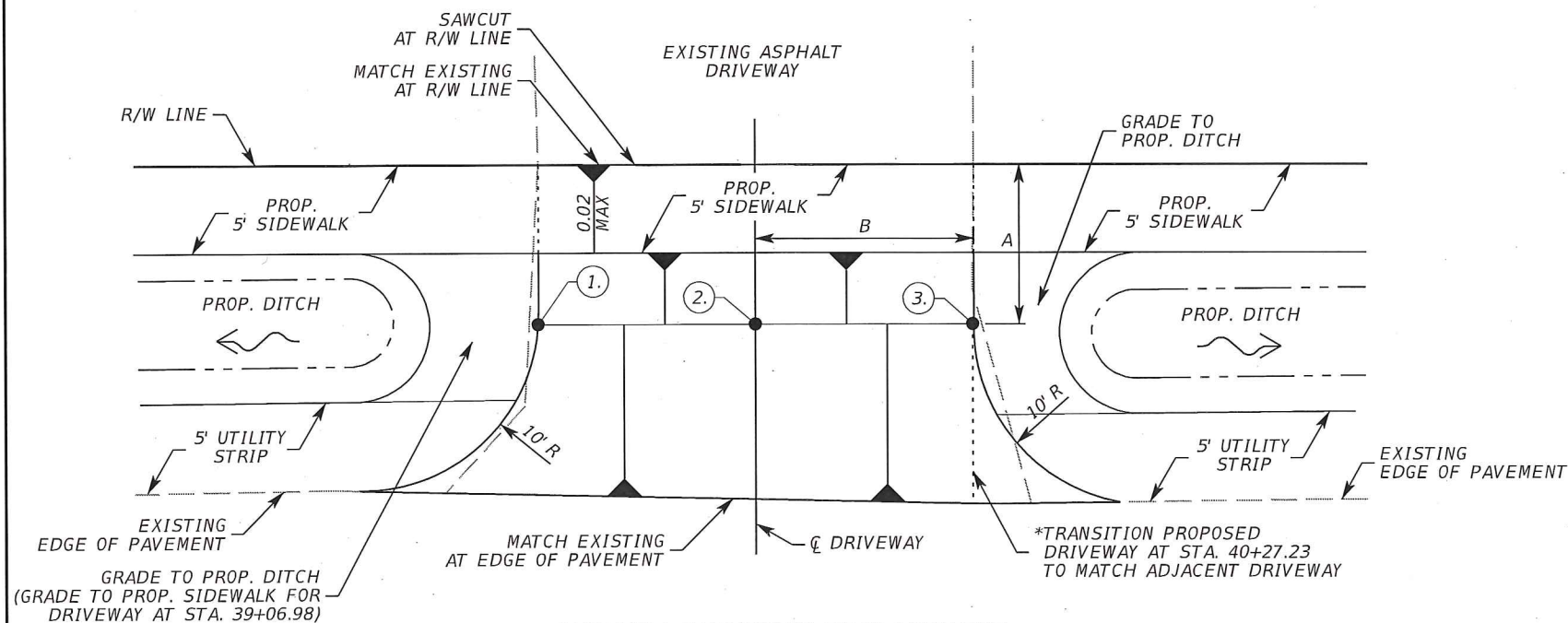
10

Derek D. Dean, PE
PE No. 51905
Certificate of Authorization No. 7074

3000 Dovera Drive, Suite 200
Oviedo, Florida 32765
p 407.971.8850



ASPHALT DRIVEWAY CONSTRUCTION/REPLACEMENT
DITCH TYPICAL SECTION 1 - N.T.S.
 DRIVEWAYS AT STA. 35+29.02, STA. 36+16.31,
 STA. 36+69.84 & STA. 37+69.18



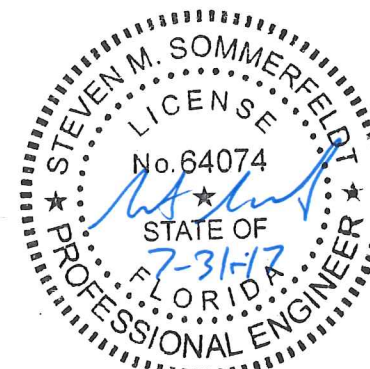
ASPHALT DRIVEWAY REPLACEMENT
DITCH TYPICAL SECTION 2 - N.T.S.
 DRIVEWAYS AT STA. 39+06.98 & 40+27.23

ASPHALT DRIVEWAY DETAILS							
DRIVEWAY LOCATION STATION	SIDE	ELEVATION (FT)			A (FT)	B (FT)	DRIVEWAY AREA (SY)
		1.	2.	3.			
35+29.02*	LT	98.70	98.28	98.35	4.7	22.3	71
36+16.31	LT	98.45	98.33	98.20	4.3	6.0	23
36+69.84	LT	98.31	98.21	98.15	4.8	12.4	43
37+69.18	LT	98.68	98.75	98.82	4.1	8.7	31
39+06.98	LT	98.85	99.10	99.00	10.4	37.9	116
40+27.23	LT	98.60	98.66	99.37	9.9	53.5	158
40+80.63 - 41+53.64	LT	N/A	N/A	N/A	N/A	N/A	91

NOTE: REFER TO TYPICAL SECTION SHEET FOR DRIVEWAY AT STA. 40+80.63 - 41+53.64
 * AREA BETWEEN POINT 2. AND 3. TO BE GRADED TO S-100

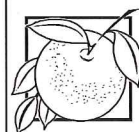
DRIVEWAY CONSTRUCTION/REPLACEMENT MATERIAL

- TYPE B STABILIZATION (12")
- OPTIONAL BASE, BASE GROUP 01 (4")
- TYPE SP-9.5 STRUCTURAL COURSE (TRAFFIC C) (1")



REVISIONS		
DATE	BY	DESCRIPTION

**BARRY STREET
 DRAINAGE IMPROVEMENTS**



**ORANGE COUNTY
 GOVERNMENT
 FLORIDA**



Steven M. Sommerfeldt, PE
 PE No. 64074
 Certificate of Authorization No. 7074
 3000 Dovera Drive, Suite 200
 Oviedo, Florida 32765
 p 407.971.8850

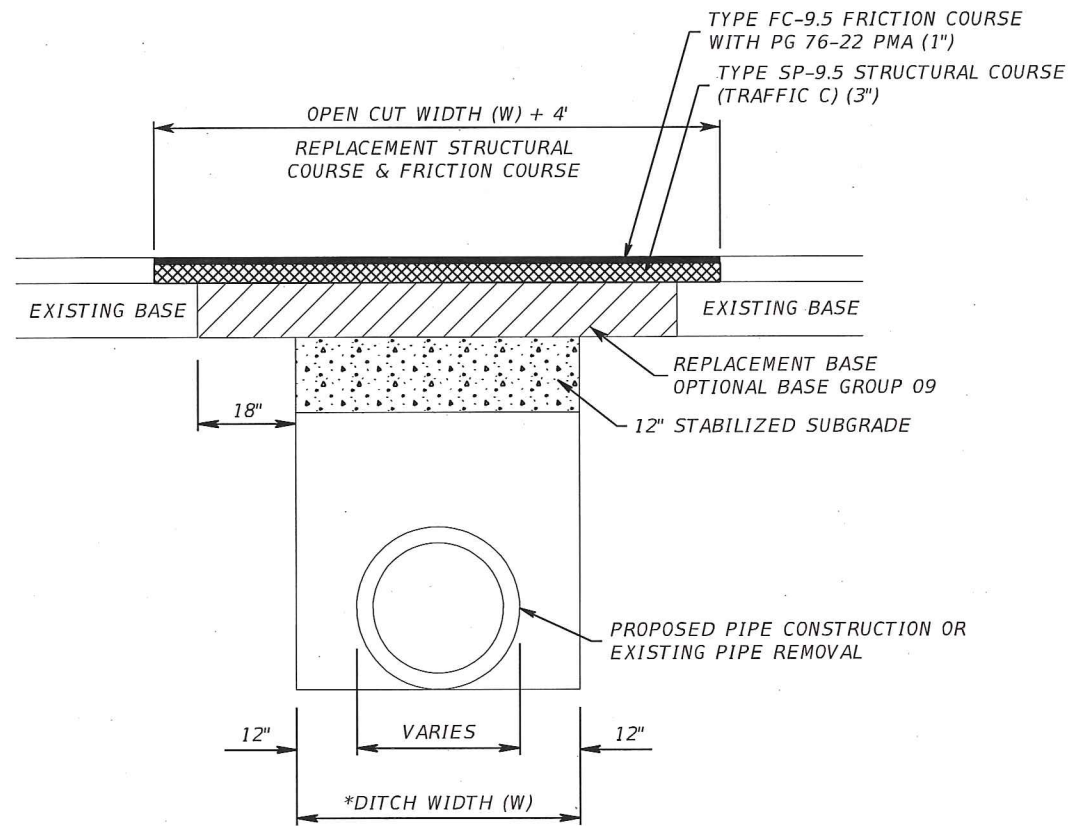
DRIVEWAY DETAILS

SHEET NO.

11

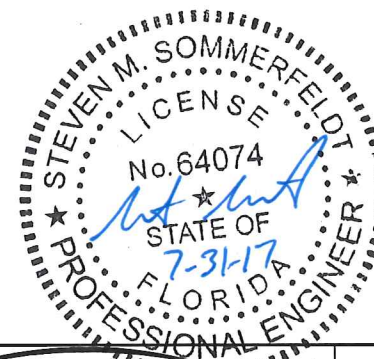
GENERAL NOTES:

1. REFER TO FDOT INDEX 307 FOR DETAILS.
2. ASPHALTIC CONCRETE SURFACE MATERIAL SHALL BE REPLACED WITH WHAT IS SHOWN IN THE PLANS FOR NEW RECONST. OR AS APPROVED BY THE COUNTY ENGINEER.
3. BASE REPLACEMENT SHALL BE OPTIONAL BASE GROUP 09.
4. ALL JOINT CUTS SHALL BE MECHANICALLY SAW CUT.
5. SUB-GRADE CUT TO BE COMPACTED TO 98% MAX. DENSITY AS DETERMINED BY AASHTO T - 180.
6. CUT AREA TO BE PLATED OR PROTECTED ON DAY OF POUR.



***NOTE:**
 -FOR JACK & BORE PIT CONSTRUCTION DIMENSIONS REFER TO PLAN AND PROFILE SHEETS.
 -THE DITCH WIDTH (W) FOR PIPES INSTALLED USING JACK & BORE METHODS SHALL BE EQUAL TO THE SENDING/RECEIVING PIT DIMENSIONS.

**STANDARD ROADWAY TRENCH CUT RESTORATION
 FOR FLEXIBLE PAVEMENT RESTORATION
 N.T.S.**



REVISIONS		
DATE	BY	DESCRIPTION

**BARRY STREET
 DRAINAGE IMPROVEMENTS**



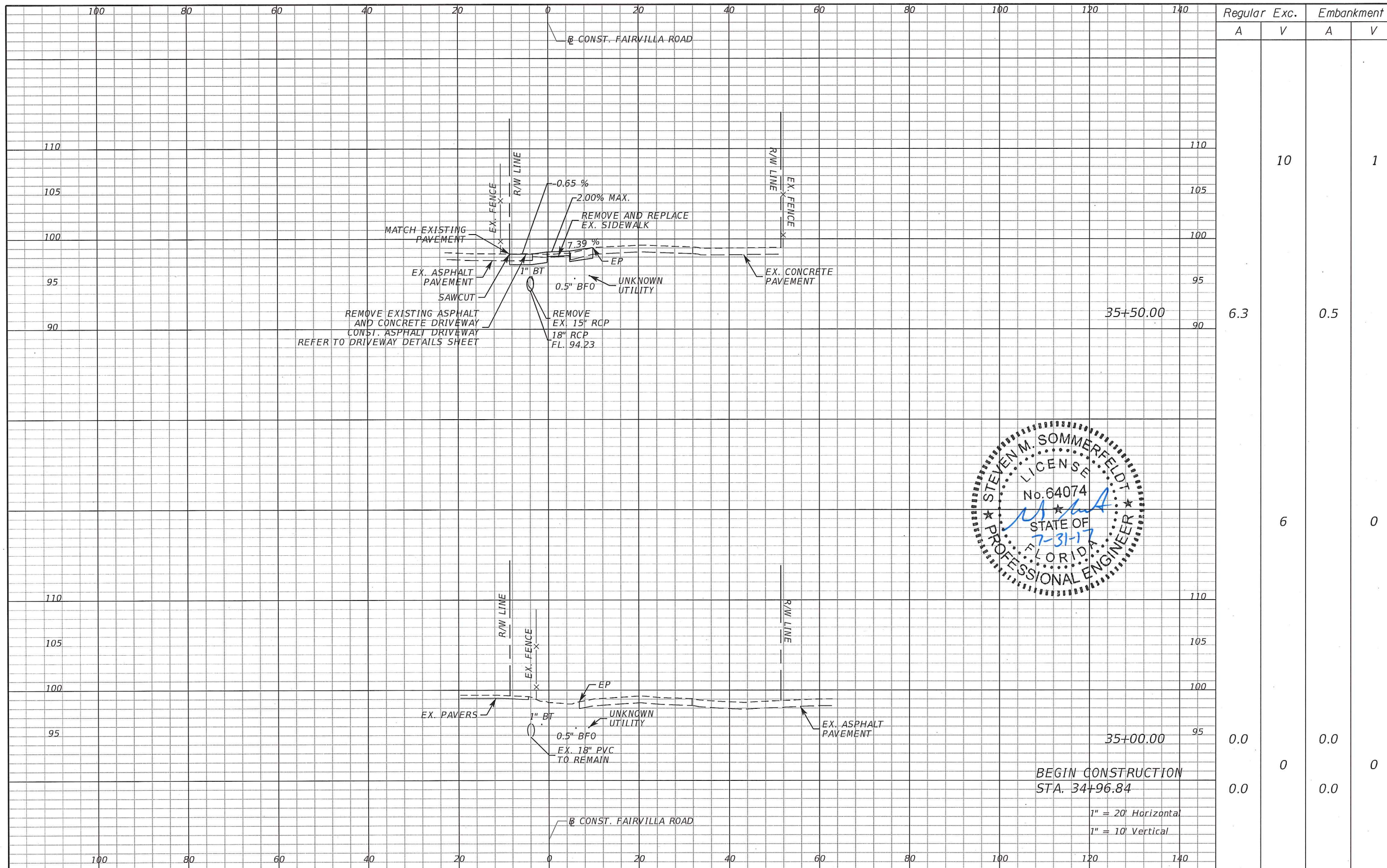
**ORANGE COUNTY
 GOVERNMENT
 FLORIDA**



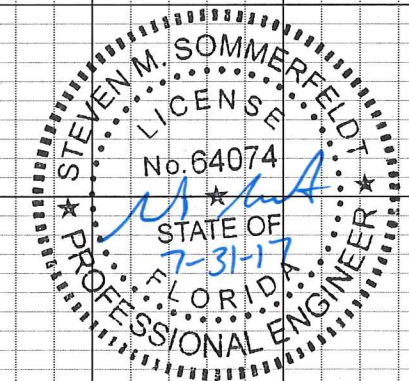
Steven M. Sommerfeldt, PE 3000 Dovera Drive, Suite 200
 PE No. 64074 Oviedo, Florida 32765
 Certificate of Authorization No. 7074 p 407.971.8850

MISCELLANEOUS DETAILS

SHEET NO.
 12

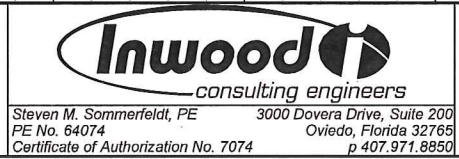


Regular		Exc.		Embankment	
A	V	A	V	A	V
			10		1
6.3		0.5			
	6				0
0.0		0.0			0
0.0		0.0			0



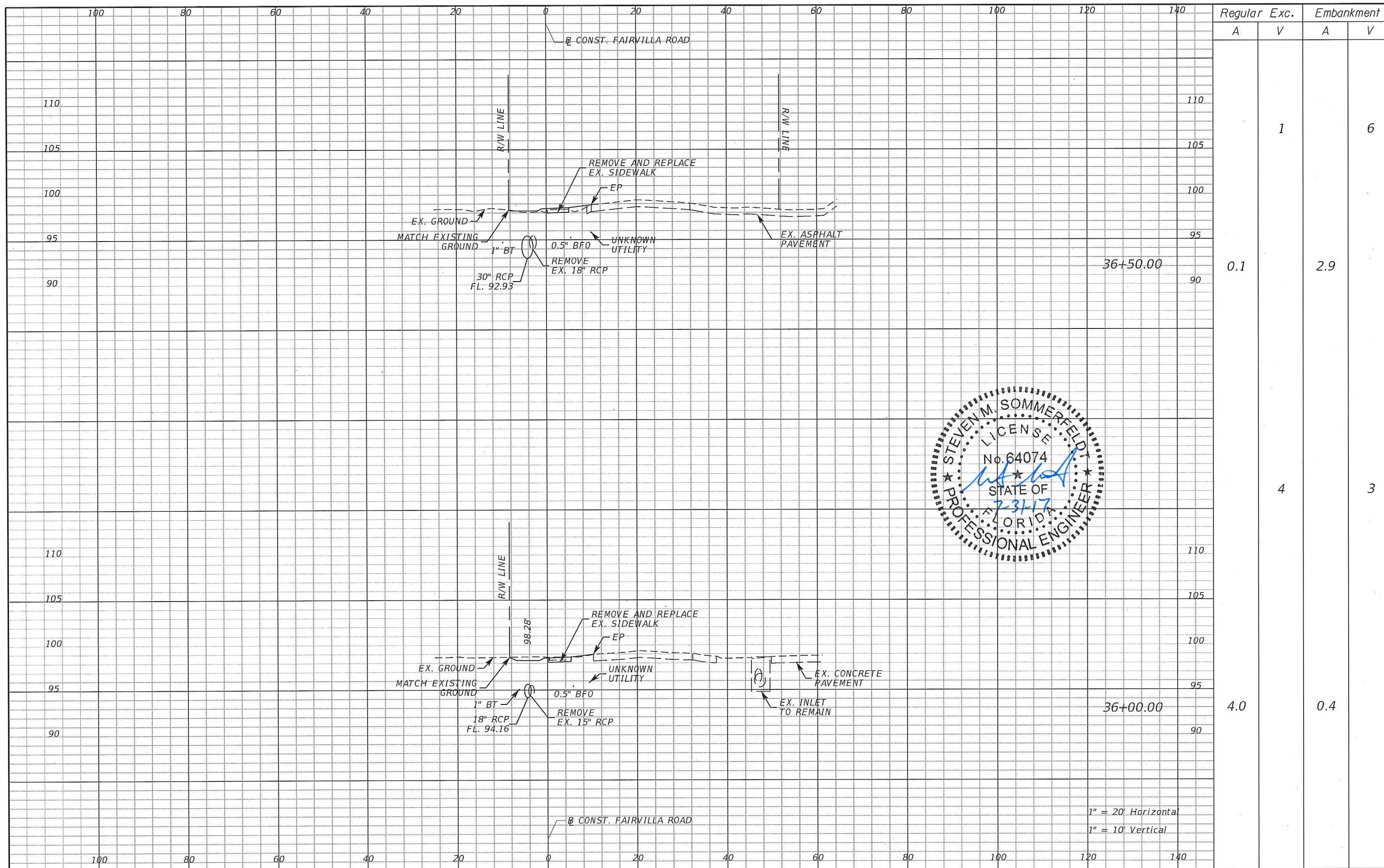
REVISIONS		
DATE	BY	DESCRIPTION

**BARRY STREET
DRAINAGE IMPROVEMENTS**



**CROSS SECTIONS
FAIRVILLA ROAD**

SHEET
NO.
13

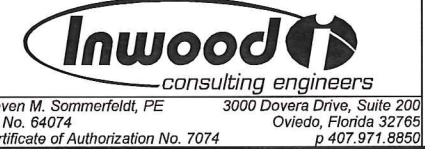


Regular		Exc.		Embankment	
A	V	A	V	A	V
			1		6
0.1		2.9			
			4		3
4.0		0.4			

1" = 20' Horizontal
1" = 10' Vertical

REVISIONS		
DATE	BY	DESCRIPTION

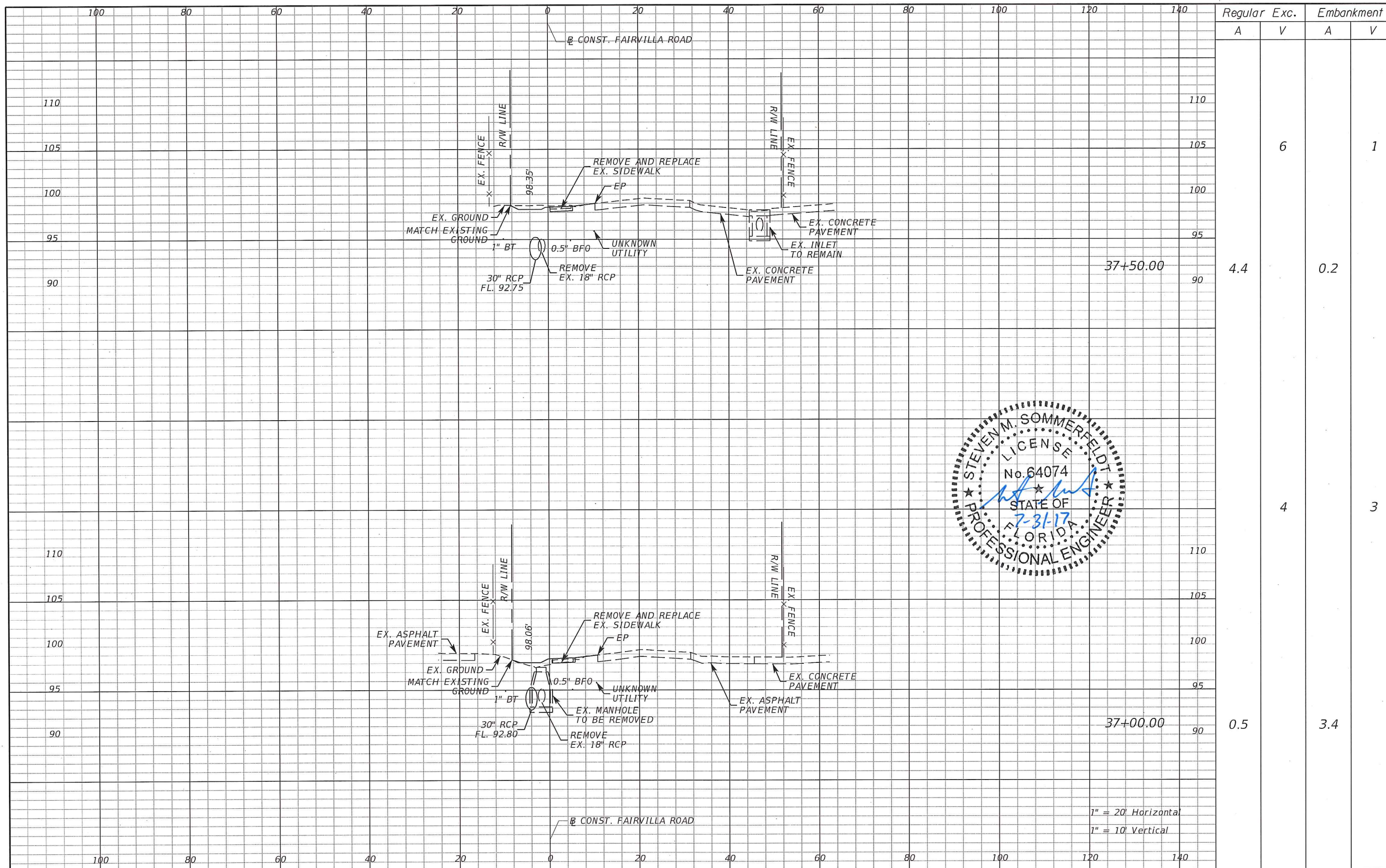
**BARRY STREET
DRAINAGE IMPROVEMENTS**



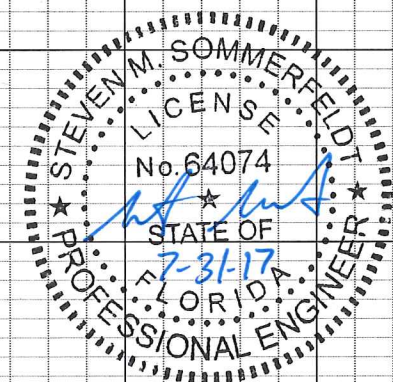
**CROSS SECTIONS
FAIRVILLA ROAD**

SHEET NO.
14

Steven M. Sommerfeldt, PE
PE No. 64074
Certificate of Authorization No. 7074
3000 Dovera Drive, Suite 200
Oviedo, Florida 32765
p 407.971.8850



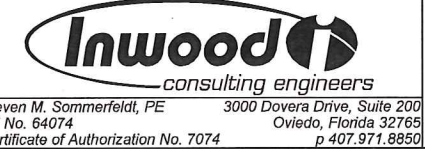
Regular		Exc.		Embankment	
A	V	A	V	A	V
			6		1
4.4		0.2			
			4		3
0.5		3.4			



1" = 20' Horizontal
1" = 10' Vertical

REVISIONS		
DATE	BY	DESCRIPTION

**BARRY STREET
DRAINAGE IMPROVEMENTS**



**CROSS SECTIONS
FAIRVILLA ROAD**

SHEET NO.
15

Steven M. Sommerfeldt, PE
PE No. 64074
Certificate of Authorization No. 7074
3000 Dovera Drive, Suite 200
Oviedo, Florida 32765
p 407.971.8850