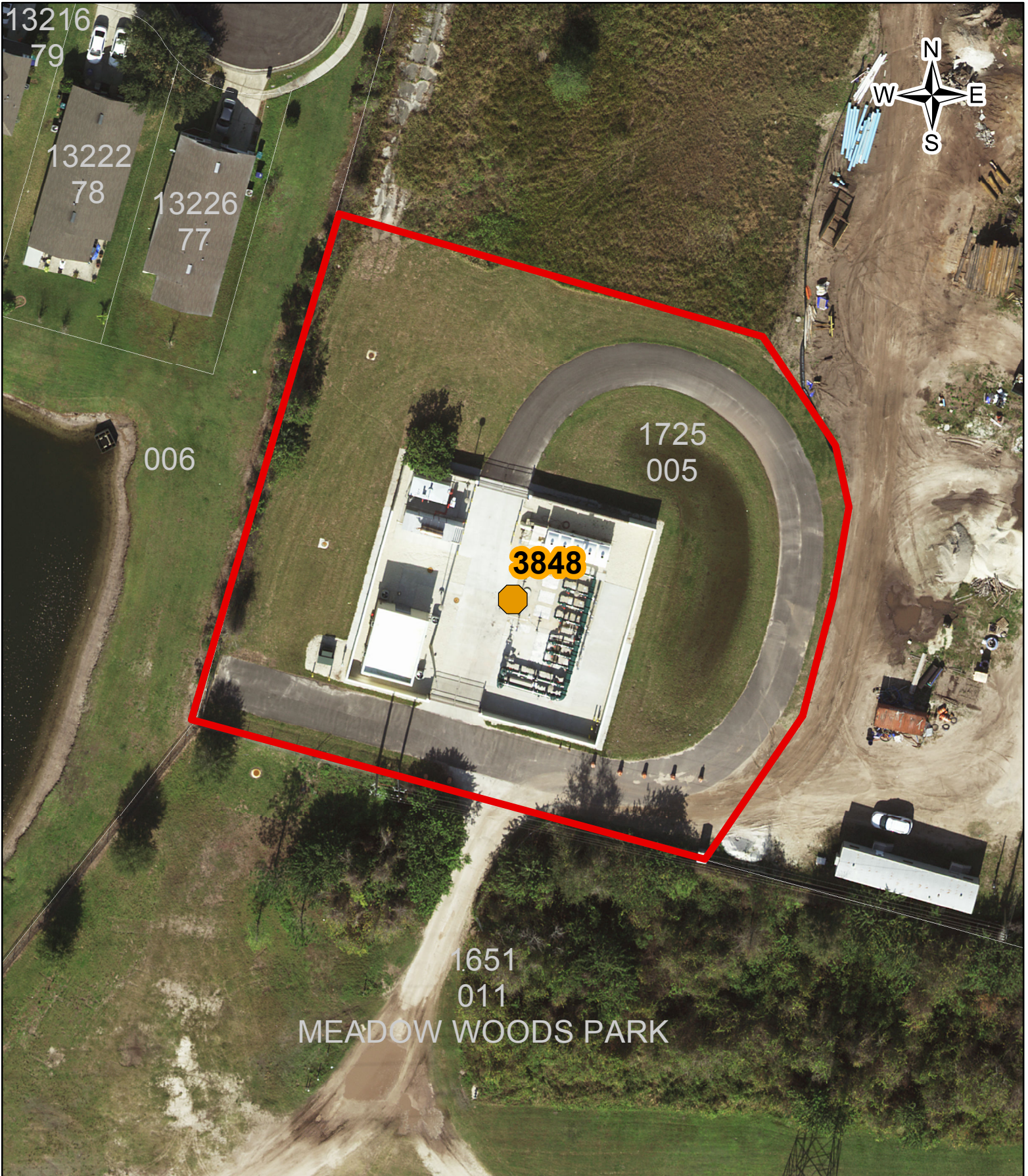


# Y17-1026-DG MAPS 4

LOCATION: South  
PS 3848 Meadow Woods Master  
1751 Rhode Island Woods Circle  
Orlando, FL 32824  
Line Item #31  
Area: 34,700.00 Square Feet

ORANGE COUNTY UTILITIES  
FIELD SERVICES DIVISION  
PUMP STATION LANDSCAPE MAINTENANCE



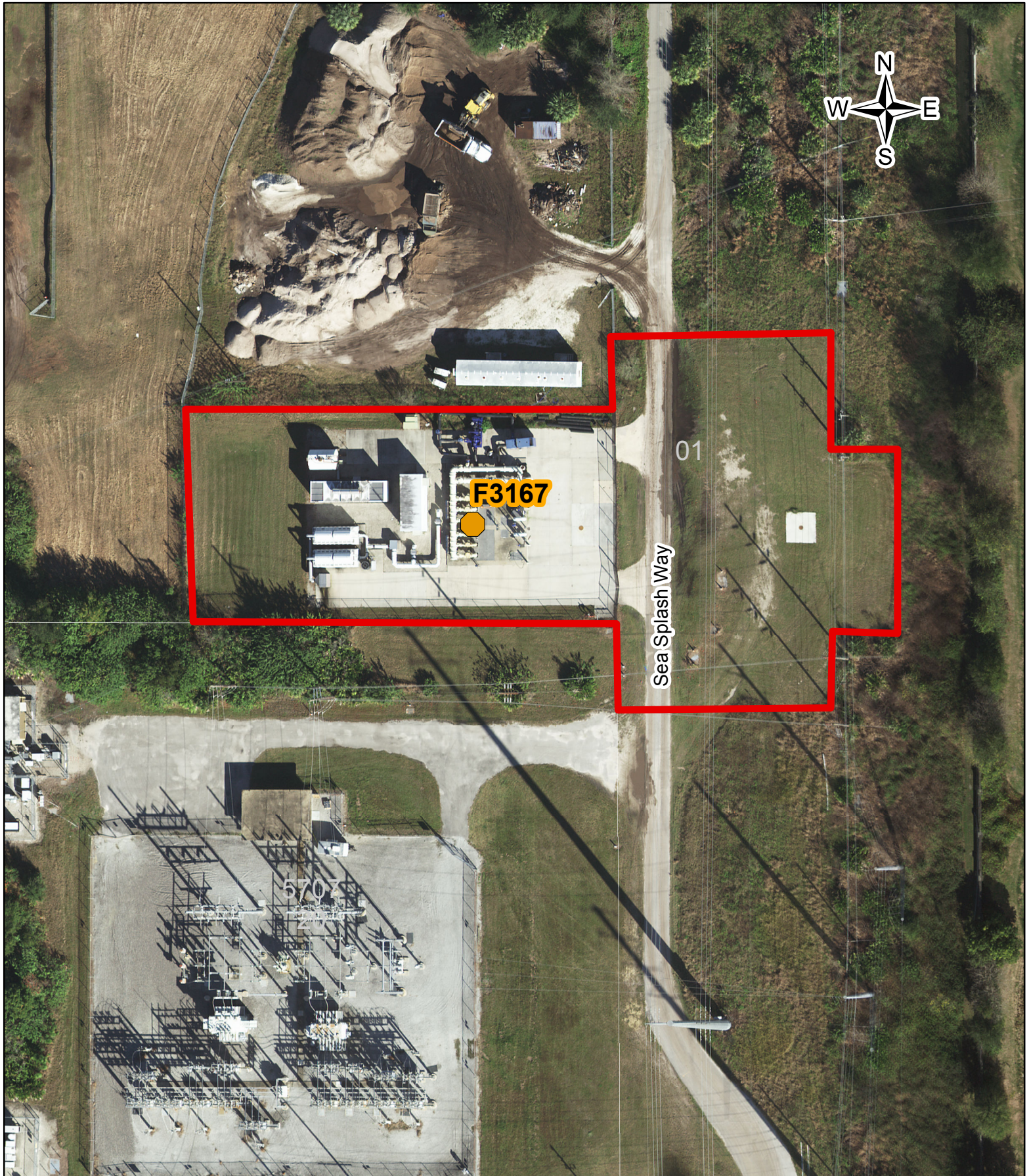
LOCATION: South  
PS 3995 Universal Blvd  
8051 Cool Breeze Drive  
Orlando, FL 32819  
Line Item #32  
Area: 10,264.23 Square Feet

ORANGE COUNTY UTILITIES  
FIELD SERVICES DIVISION  
PUMP STATION LANDSCAPE MAINTENANCE



LOCATION: South  
PS F3167 SeaWorld  
5707 Sea Harbor Drive  
Orlando, FL 32821  
Line Item #33  
Area: 28,497.41 Square Feet

ORANGE COUNTY UTILITIES  
FIELD SERVICES DIVISION  
PUMP STATION LANDSCAPE MAINTENANCE



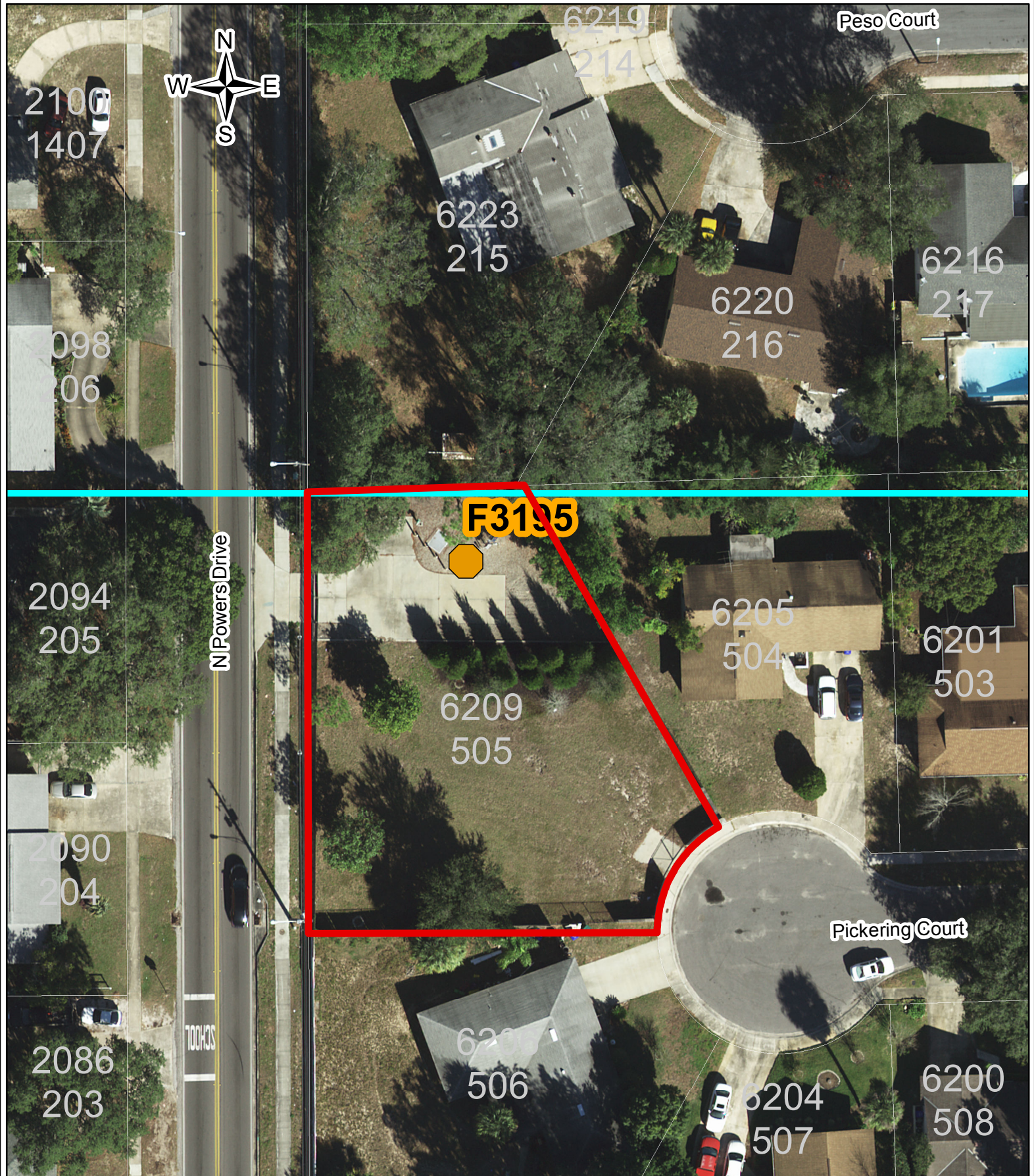
LOCATION: North  
PS 3000 Pine Hills  
4743 Deauville Drive  
Orlando, FL 32808  
Line Item #34  
Area: 20,456.03 Square Feet

ORANGE COUNTY UTILITIES  
FIELD SERVICES DIVISION  
PUMP STATION LANDSCAPE MAINTENANCE



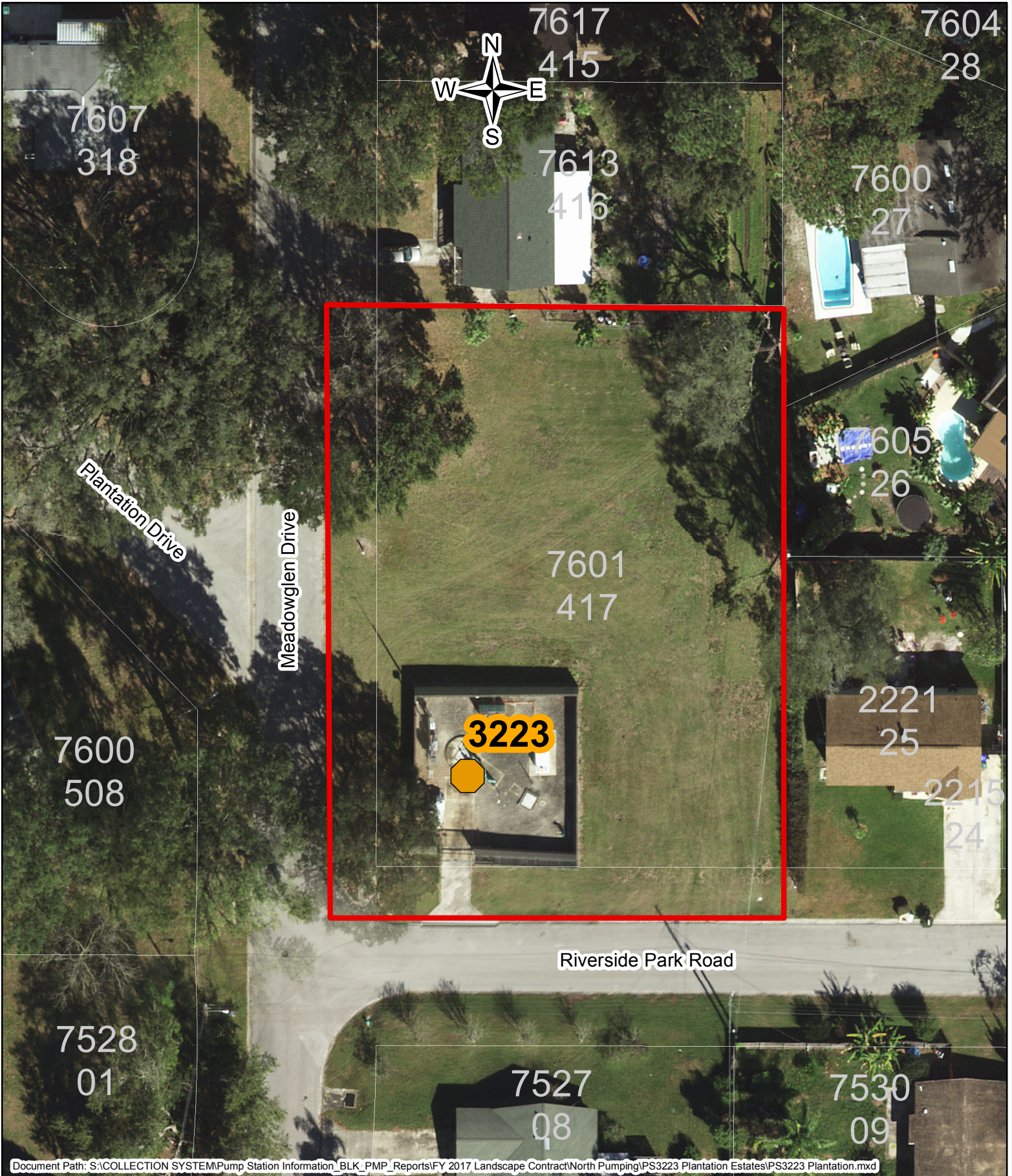
LOCATION: North  
PS F3195 Lonesome Pines  
6209 Pickering Court  
Orlando, FL 32808  
Line Item #35  
Area: 16,069.20 Square Feet

ORANGE COUNTY UTILITIES  
FIELD SERVICES DIVISION  
PUMP STATION LANDSCAPE MAINTENANCE



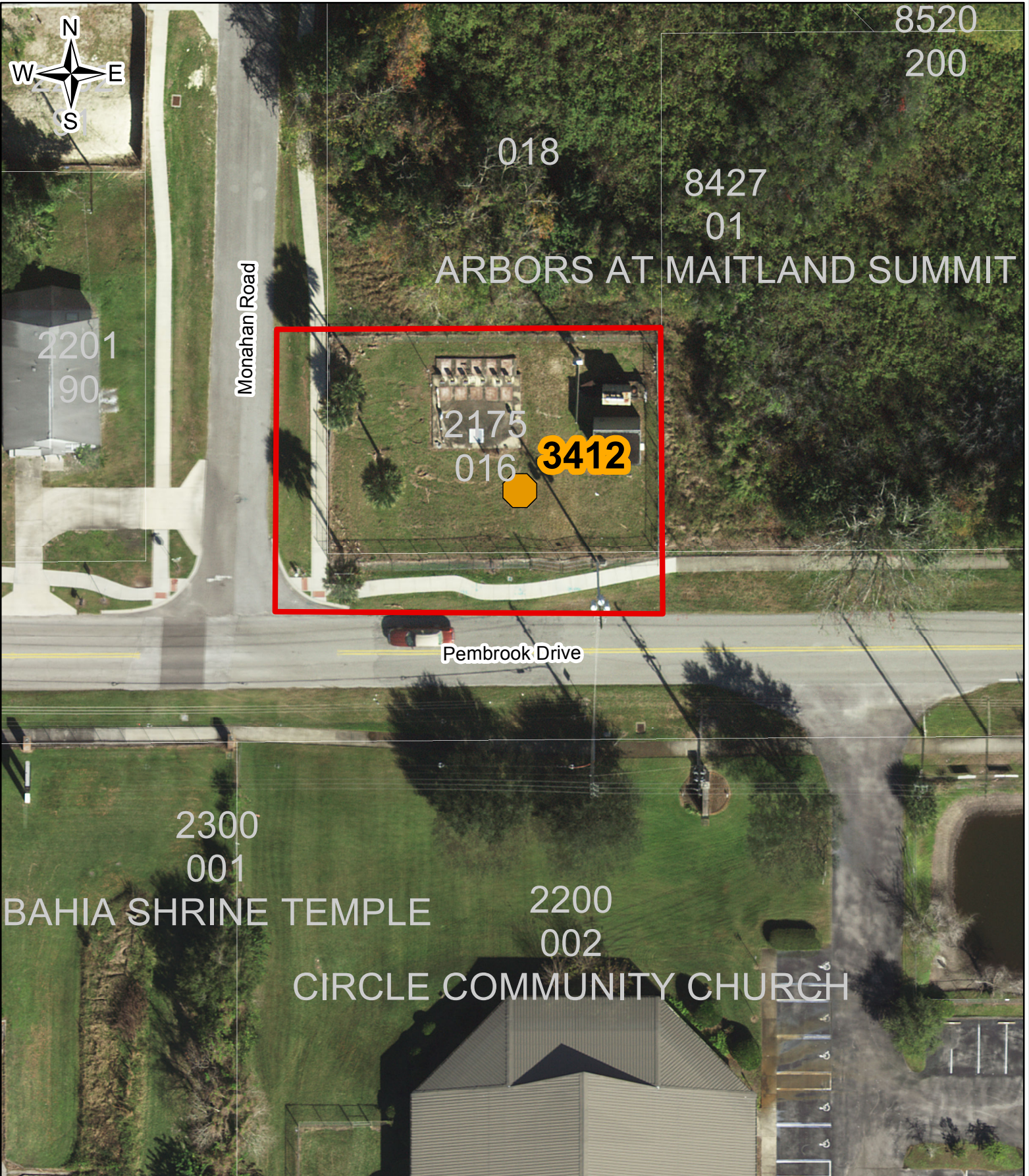
LOCATION: North  
PS 3223 Plantation Estates  
7601 Meadowglen Drive  
Orlando, FL 32810  
Line Item #36  
Area: 28,437.88 Square Feet

ORANGE COUNTY UTILITIES  
FIELD SERVICES DIVISION  
PUMP STATION LANDSCAPE MAINTENANCE



LOCATION: North  
PS 3412 Station C  
2175 Pembrook Drive  
Orlando, FL 32810  
Line Item #37  
Area: 12,120.17 Square Feet

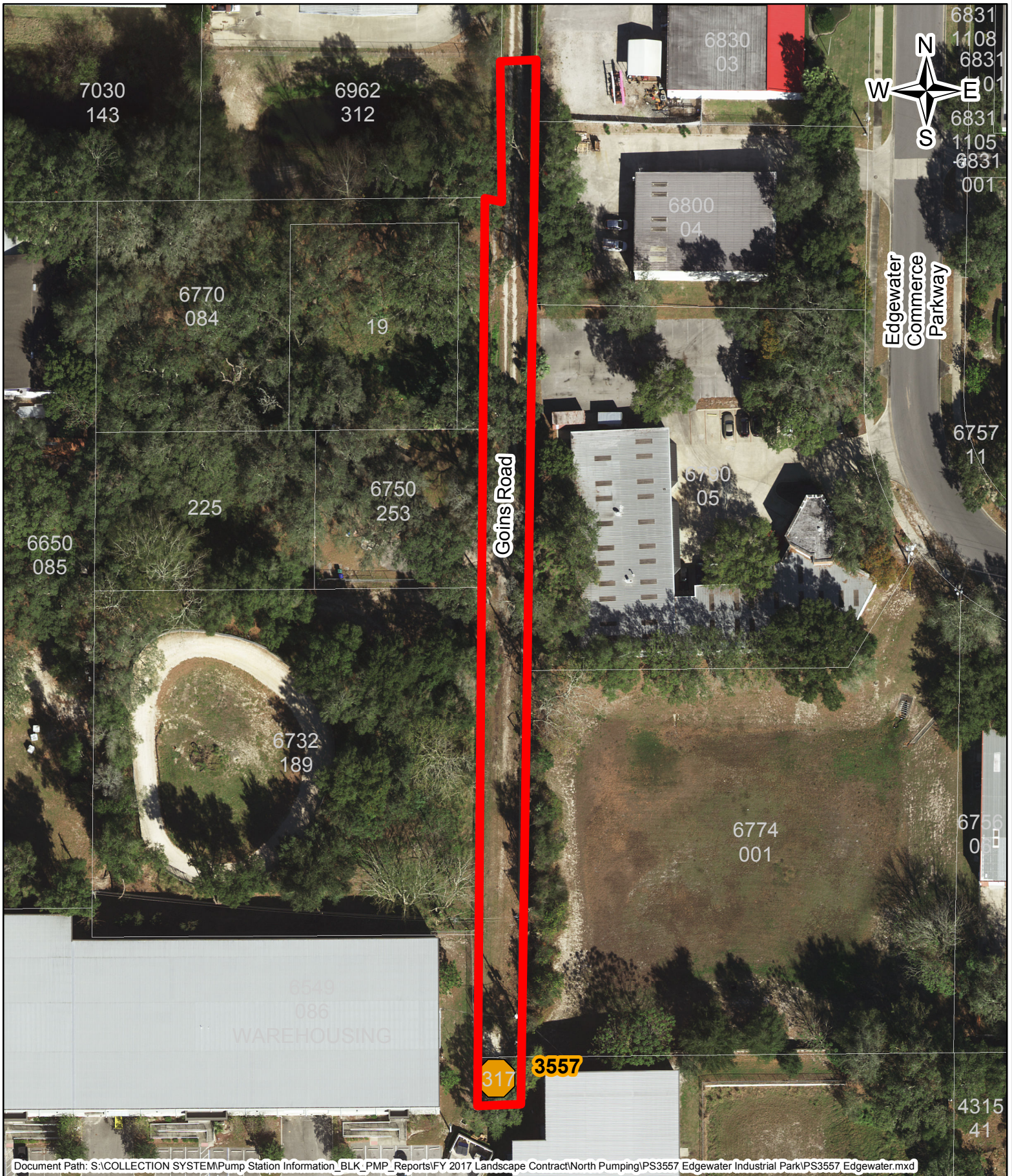
ORANGE COUNTY UTILITIES  
FIELD SERVICES DIVISION  
PUMP STATION LANDSCAPE MAINTENANCE





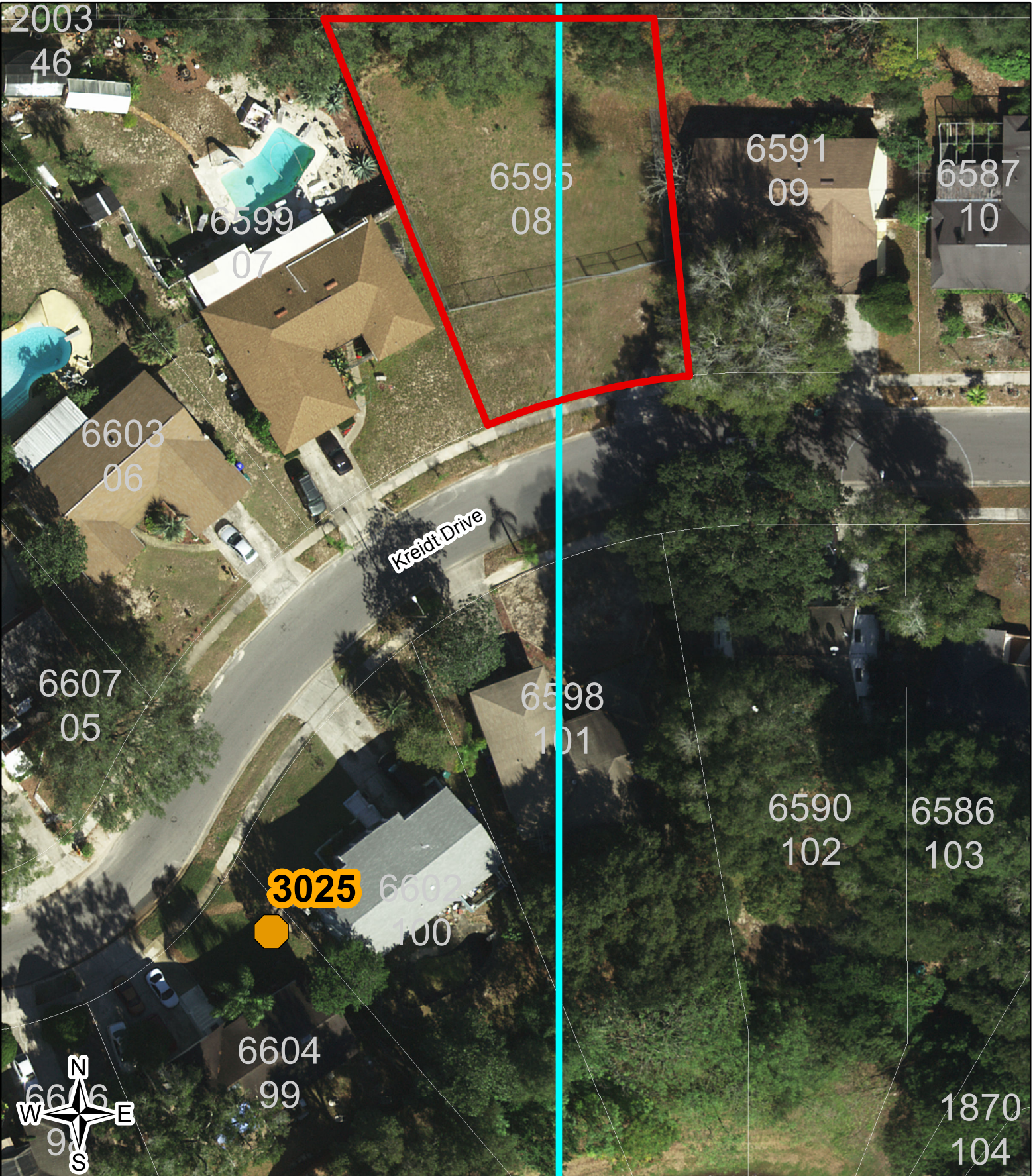
LOCATION: North  
PS 3557 Edgewater Industrial  
6709 Goins Road  
Lockhart, FL 32810  
Line Item #39  
Area: 19,135.97 Square Feet

# ORANGE COUNTY UTILITIES FIELD SERVICES DIVISION PUMP STATION LANDSCAPE MAINTENANCE



LOCATION: North  
PS 3025 Kreidt Road  
6595 Kreidt Road  
Orlando, FL 32810  
Line Item #40  
Area: 11,215.16 Square Feet

ORANGE COUNTY UTILITIES  
FIELD SERVICES DIVISION  
PUMP STATION LANDSCAPE MAINTENANCE



LOCATION: North  
PS 3277 Shady Grove  
3724 Falling Leaf Lane  
Orlando, FL 32810  
Line Item #41  
Area: 6,945.93 Square Feet

ORANGE COUNTY UTILITIES  
FIELD SERVICES DIVISION  
PUMP STATION LANDSCAPE MAINTENANCE



LOCATION: North  
PS 3026 Breezewood Unit 3  
6449 Sardina Boulevard  
Lockhart, FL 32818  
Line Item #42  
Area: 9040.00 Square Feet

ORANGE COUNTY UTILITIES  
FIELD SERVICES DIVISION  
PUMP STATION LANDSCAPE MAINTENANCE

