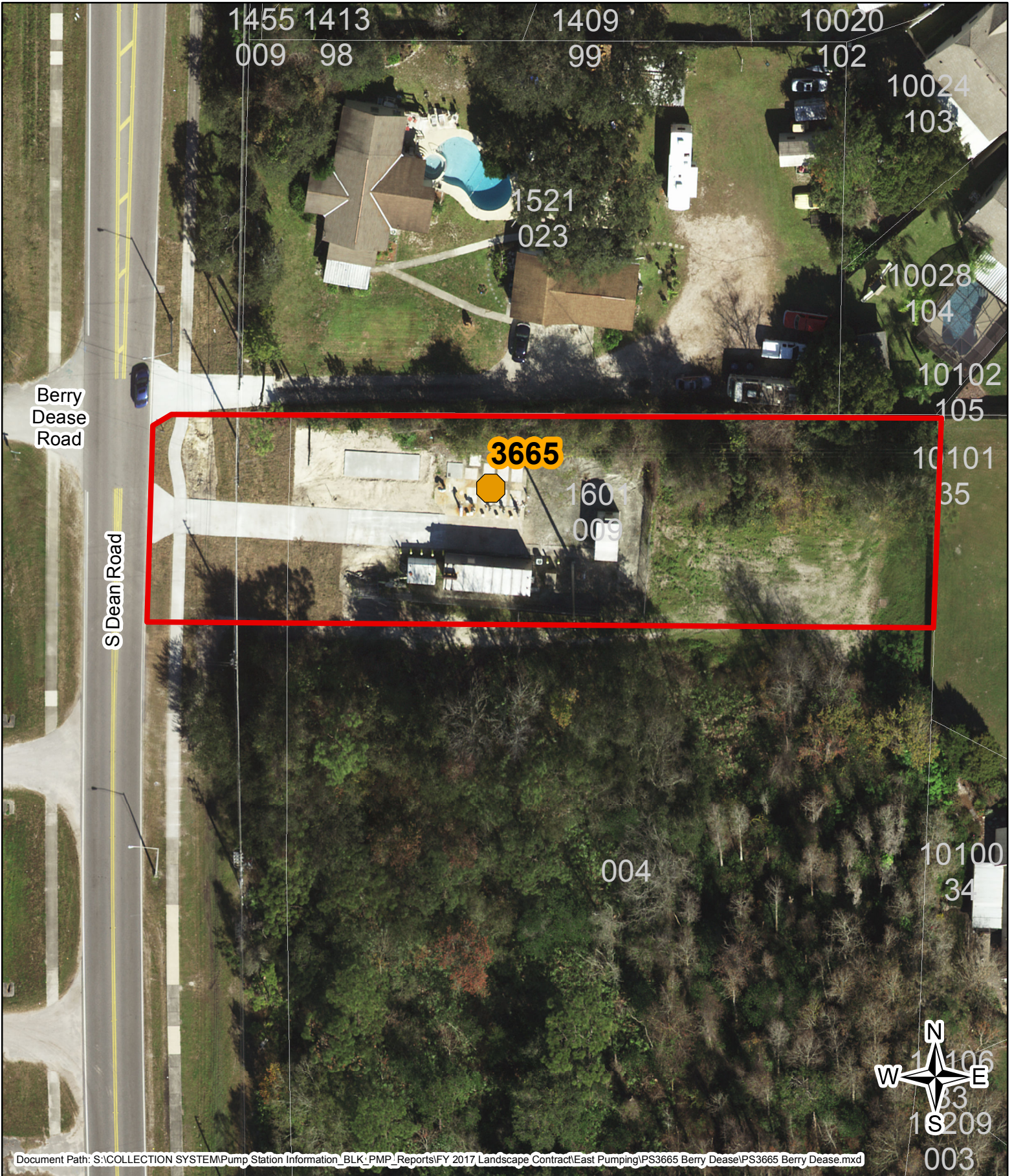


# Y17-1026-DG MAPS 2

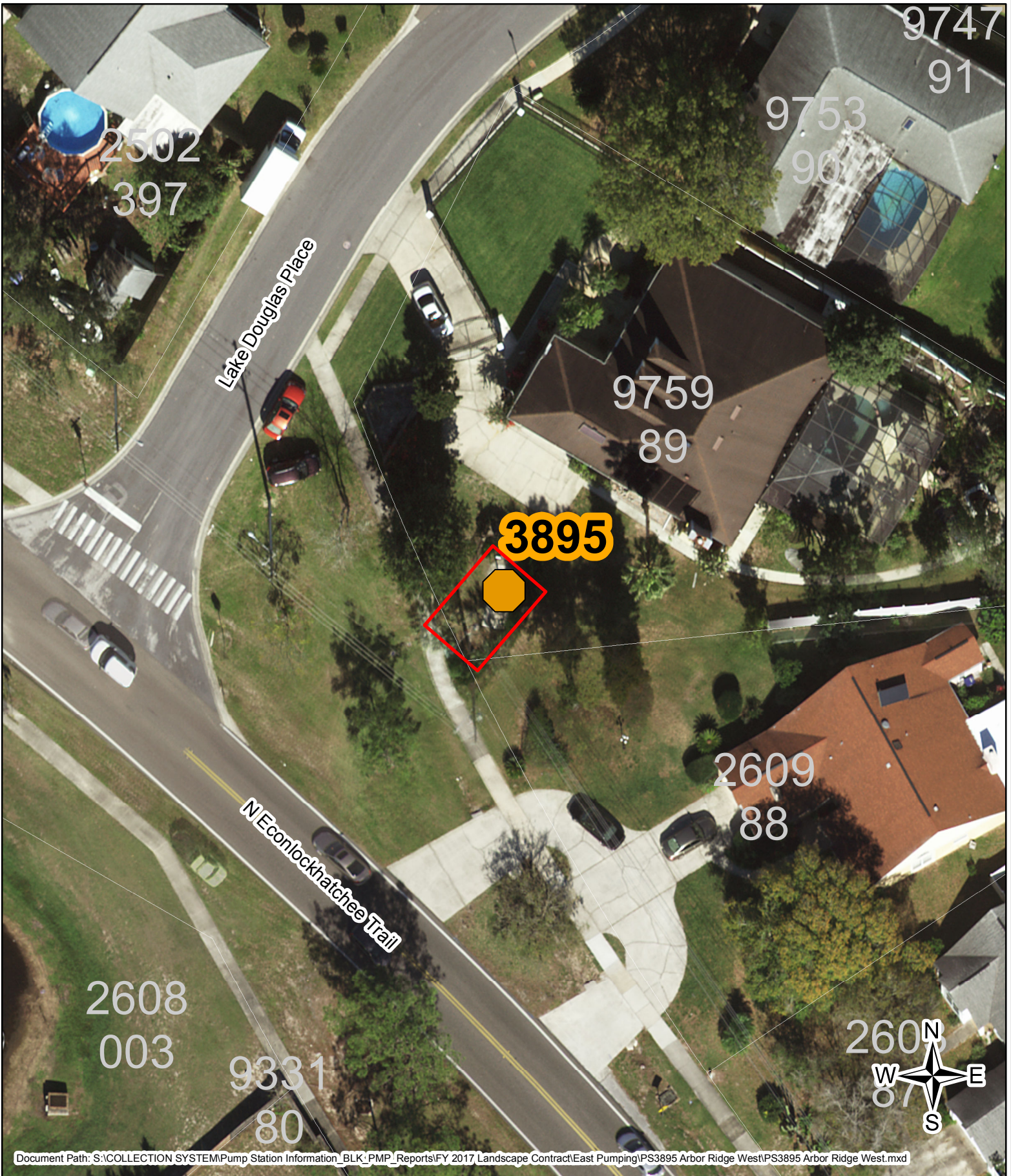
LOCATION: East  
PS 3665 - Berry Dease  
South of 1521 South Dean Rd.  
Orlando, FL 32825  
Line Item #11  
Area: 24,535.84 Square Feet

ORANGE COUNTY UTILITIES  
FIELD SERVICES DIVISION  
PUMP STATION LANDSCAPE MAINTENANCE



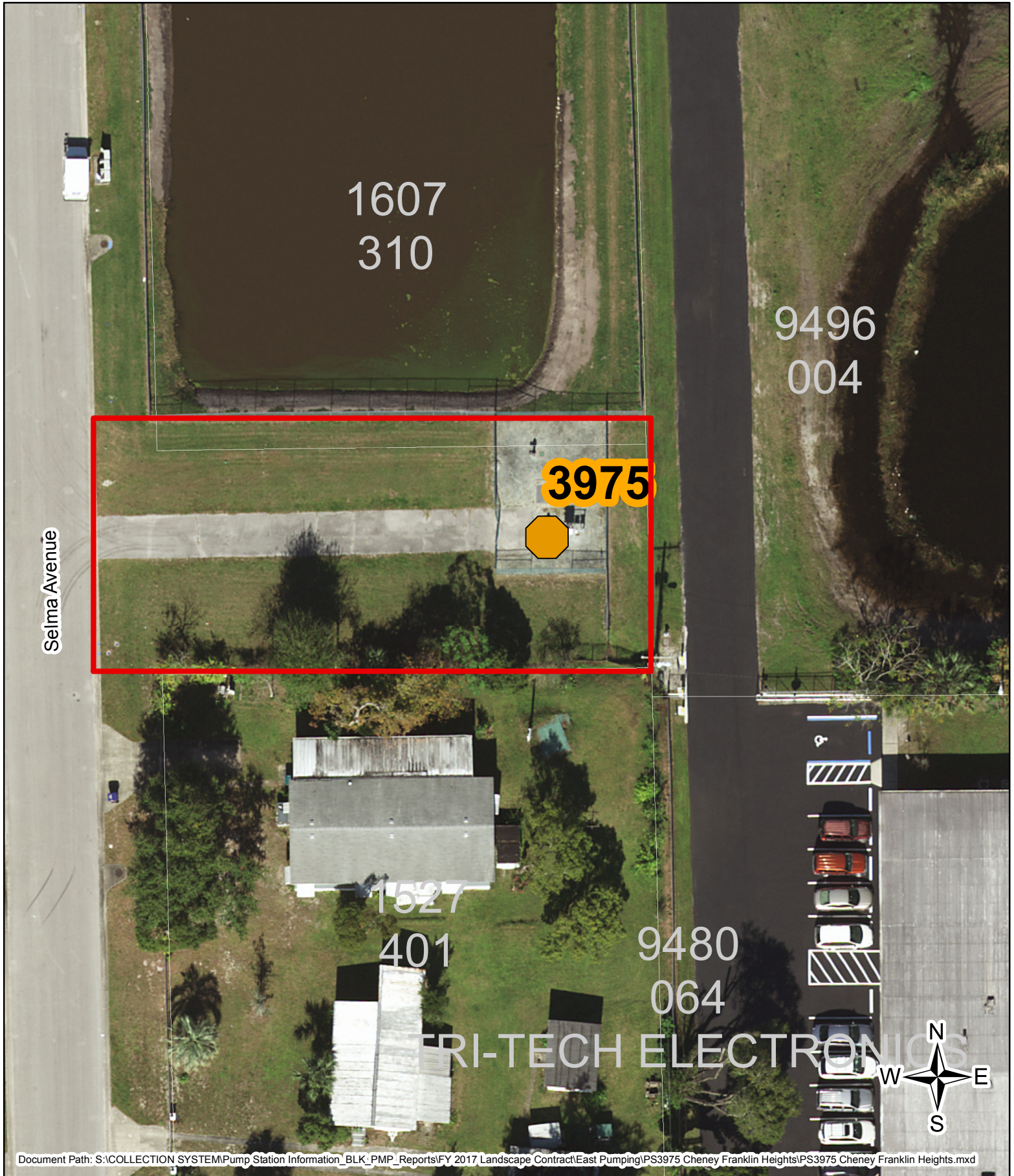
LOCATION: East  
PS 3895 - Arbor Ridge West #7  
West of 9759 Lake Douglas Pl.  
Orlando, FL 32817  
Line Item #12  
Area: 532.00 Square Feet

ORANGE COUNTY UTILITIES  
FIELD SERVICES DIVISION  
PUMP STATION LANDSCAPE MAINTENANCE



LOCATION: East  
PS 3975 - Cheney Franklin Hts.  
1527 Selma Avenue  
Orlando, FL 32825  
Line Item #13  
Area: 8,933.74 Square Feet

ORANGE COUNTY UTILITIES  
FIELD SERVICES DIVISION  
PUMP STATION LANDSCAPE MAINTENANCE



Selma Avenue

1607  
310

9496  
004

3975

1527  
401

9480  
064

TRI-TECH ELECTRONICS



LOCATION: East  
PS F3166 - Harbor East  
East of 8401 Port Said Street  
Orlando, FL 32817  
Line Item #14  
Area: 3,831.85 Square Feet

ORANGE COUNTY UTILITIES  
FIELD SERVICES DIVISION  
PUMP STATION LANDSCAPE MAINTENANCE



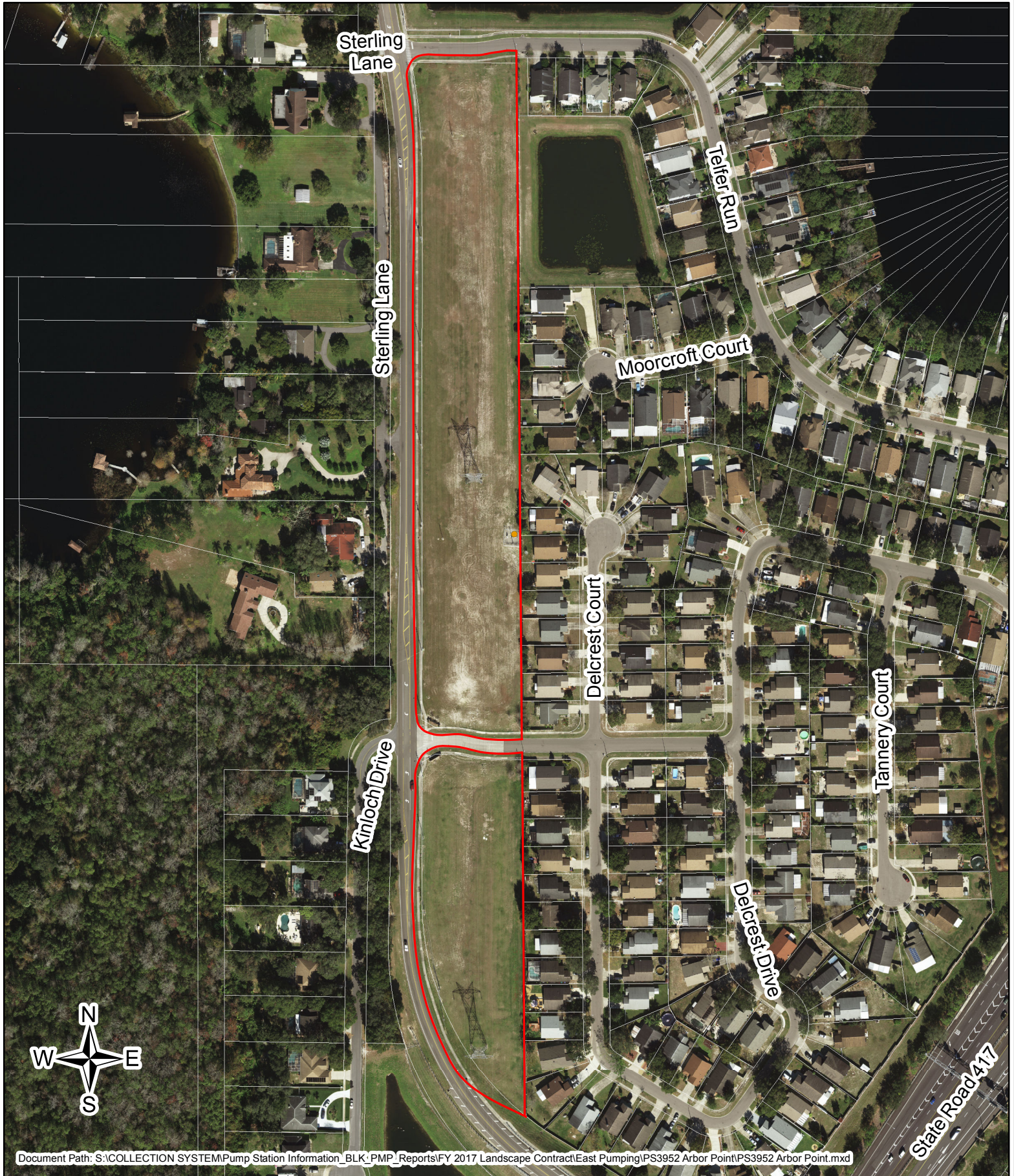
LOCATION: East  
PS 3367 - Walden Woods  
11555 Walden Woods Drive  
Orlando, FL 32826  
Line Item #15  
Area: 94,365.96 Square Feet

ORANGE COUNTY UTILITIES  
FIELD SERVICES DIVISION  
PUMP STATION LANDSCAPE MAINTENANCE



LOCATION: East  
PS 3952 - Arbor Point  
2905 North Econlockhatchee Trail  
Orlando, FL 32817  
Line Item #16  
Area: 9.84 Acres

ORANGE COUNTY UTILITIES  
FIELD SERVICES DIVISION  
PUMP STATION LANDSCAPE MAINTENANCE



LOCATION: East  
PS 3965 - Harrell Road  
2514 Harrell Road  
Orlando, FL 32817 Line  
Item #17  
Area: 3.38 Acres

ORANGE COUNTY UTILITIES  
FIELD SERVICES DIVISION  
PUMP STATION LANDSCAPE MAINTENANCE





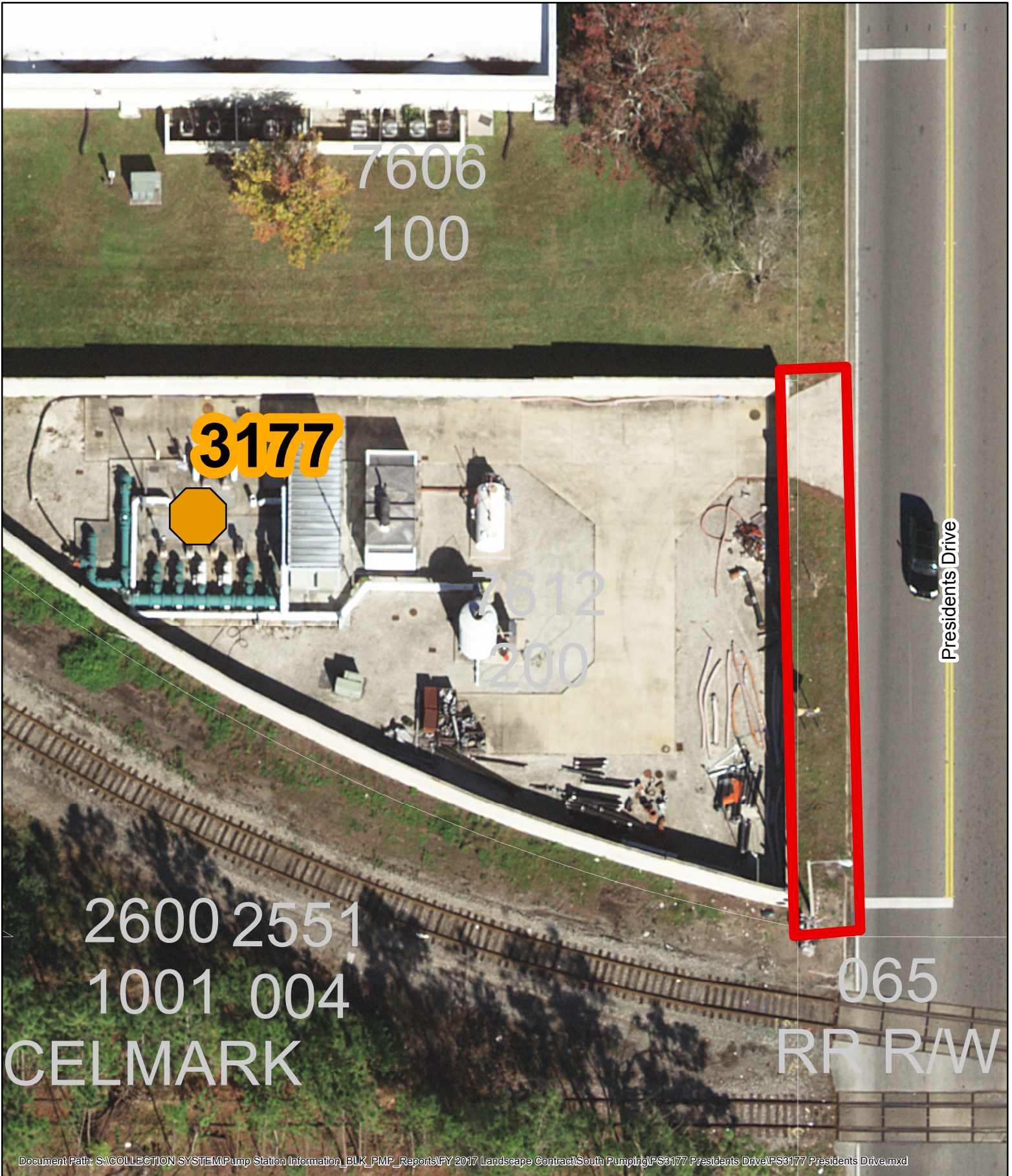
LOCATION: South  
PS 3107 Hawkes Ave  
1121 Hawkes Avenue  
Orlando, FL 32809  
Line Item #18  
Area: 9375.00 Square Feet

ORANGE COUNTY UTILITIES  
FIELD SERVICES DIVISION  
PUMP STATION LANDSCAPE MAINTENANCE



LOCATION: South  
PS 3177 Presidents Drive  
7612 Presidents Drive  
Orlando, FL 32809  
Line Item #19  
Area: 1,693.33 Square Feet

ORANGE COUNTY UTILITIES  
FIELD SERVICES DIVISION  
PUMP STATION LANDSCAPE MAINTENANCE



LOCATION: South  
PS 3254 Sand Lake Hills 6  
8638 Edge of Woods Court  
Orlando, FL 32819  
Line Item #20  
Area: 1,539.77 Square Feet

ORANGE COUNTY UTILITIES  
FIELD SERVICES DIVISION  
PUMP STATION LANDSCAPE MAINTENANCE

