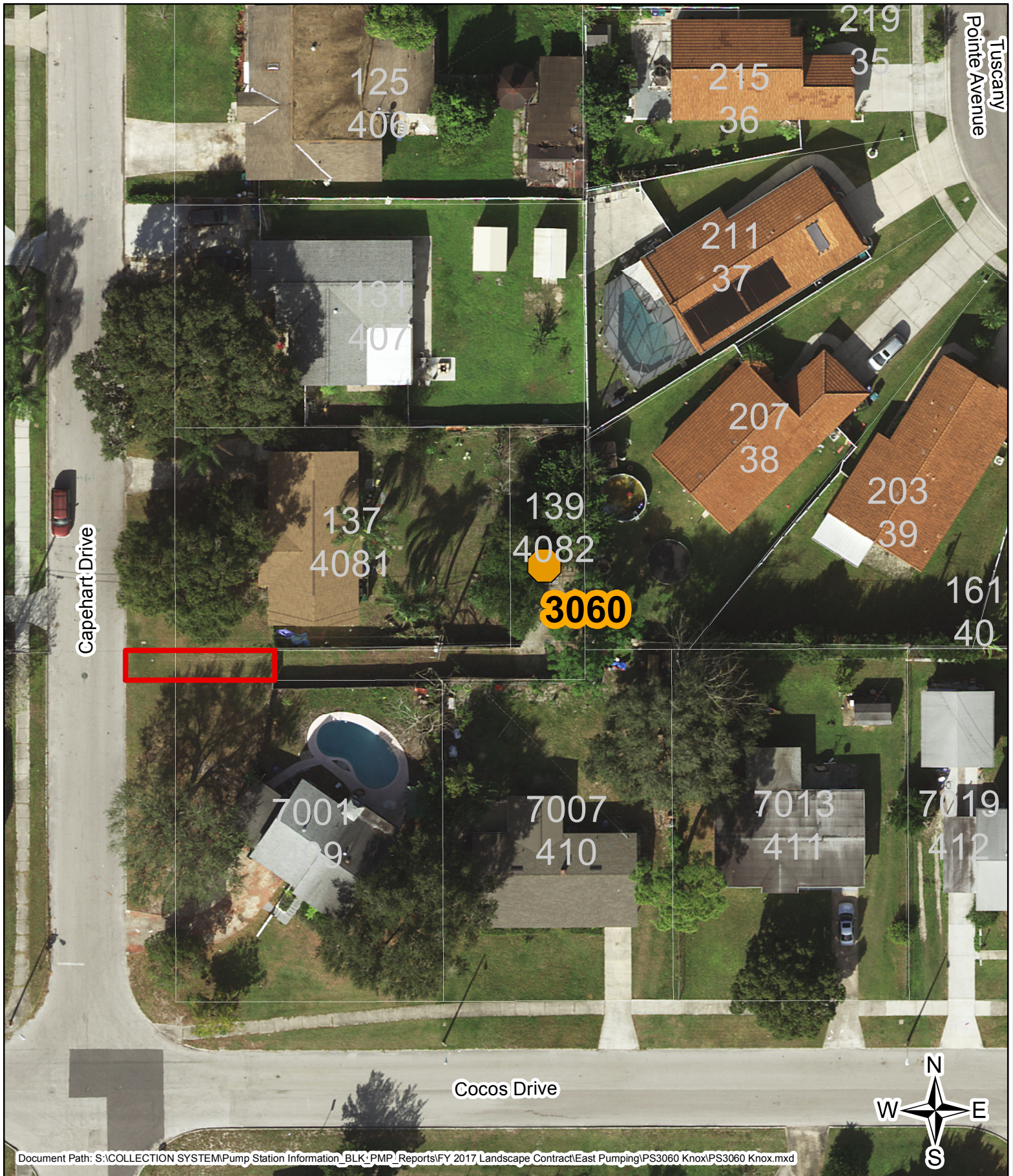


Y17-1026-DG MAPS 1

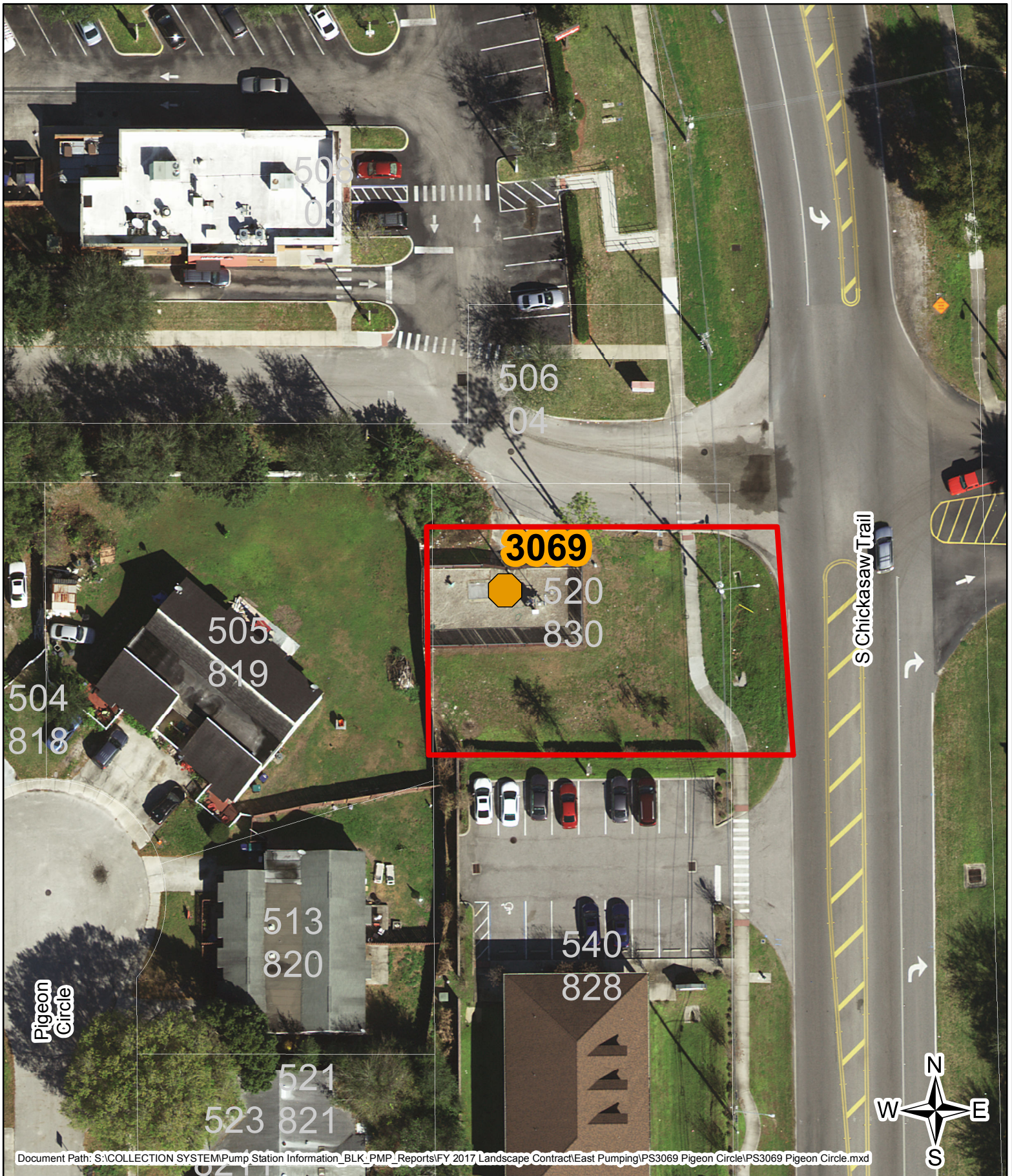
LOCATION: East
PS 3060 - Knox
137 Capehart Drive
Orlando, FL 32807
Line Item #1
Area: 490.96 Square Feet

ORANGE COUNTY UTILITIES
FIELD SERVICES DIVISION
PUMP STATION LANDSCAPE MAINTENANCE



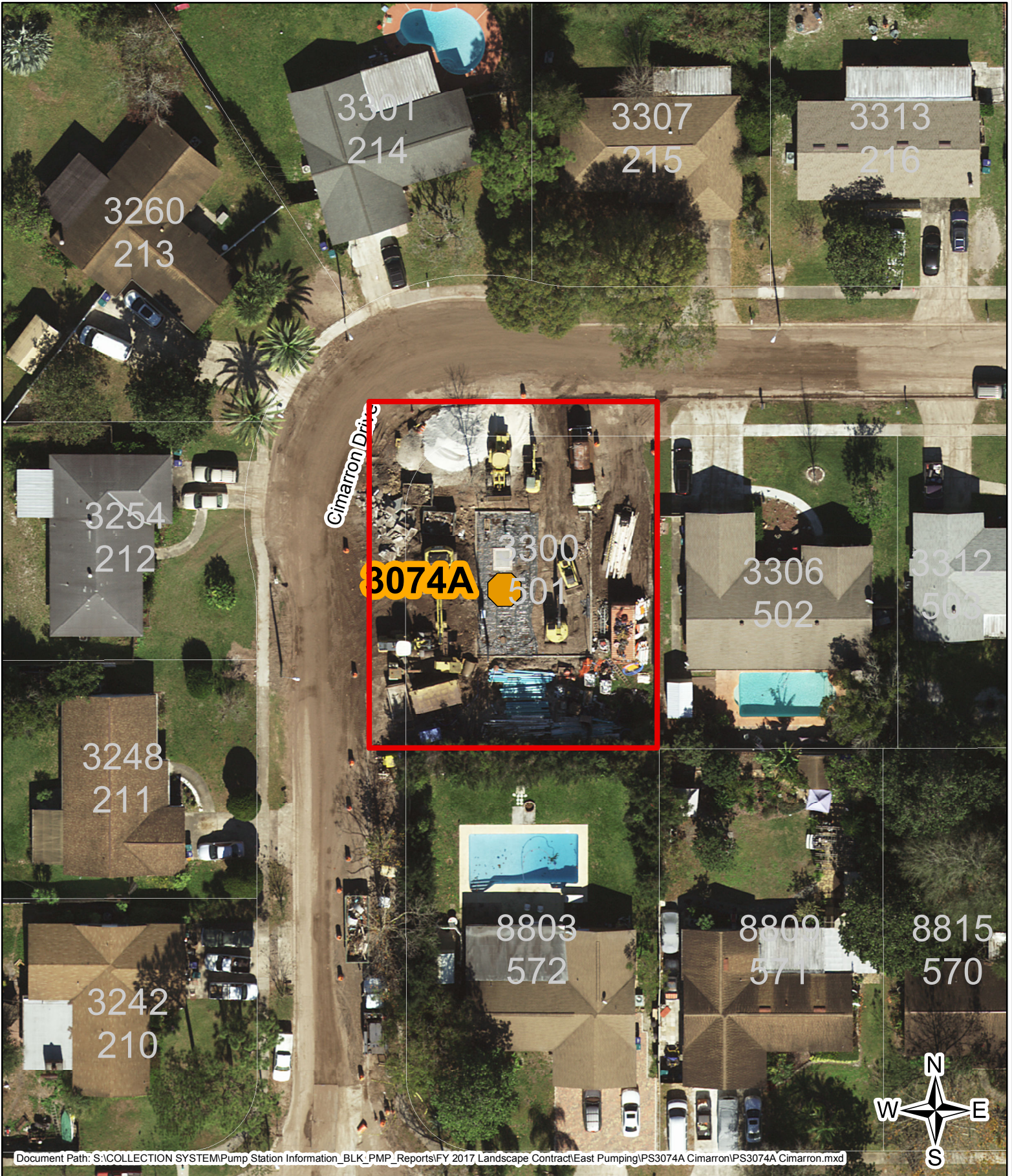
LOCATION: East
PS 3069 - Pigeon Circle
520 S. Chickasaw Trail
Orlando, FL 32825
Line Item #2
Area: 8,209.71 Square Feet

ORANGE COUNTY UTILITIES
FIELD SERVICES DIVISION
PUMP STATION LANDSCAPE MAINTENANCE



LOCATION: East
PS 3074 - Cimarron
3300 Cimarron Drive
Orlando, FL 32825
Line Item #3
Area: 10,353.06 Square Feet

ORANGE COUNTY UTILITIES
FIELD SERVICES DIVISION
PUMP STATION LANDSCAPE MAINTENANCE



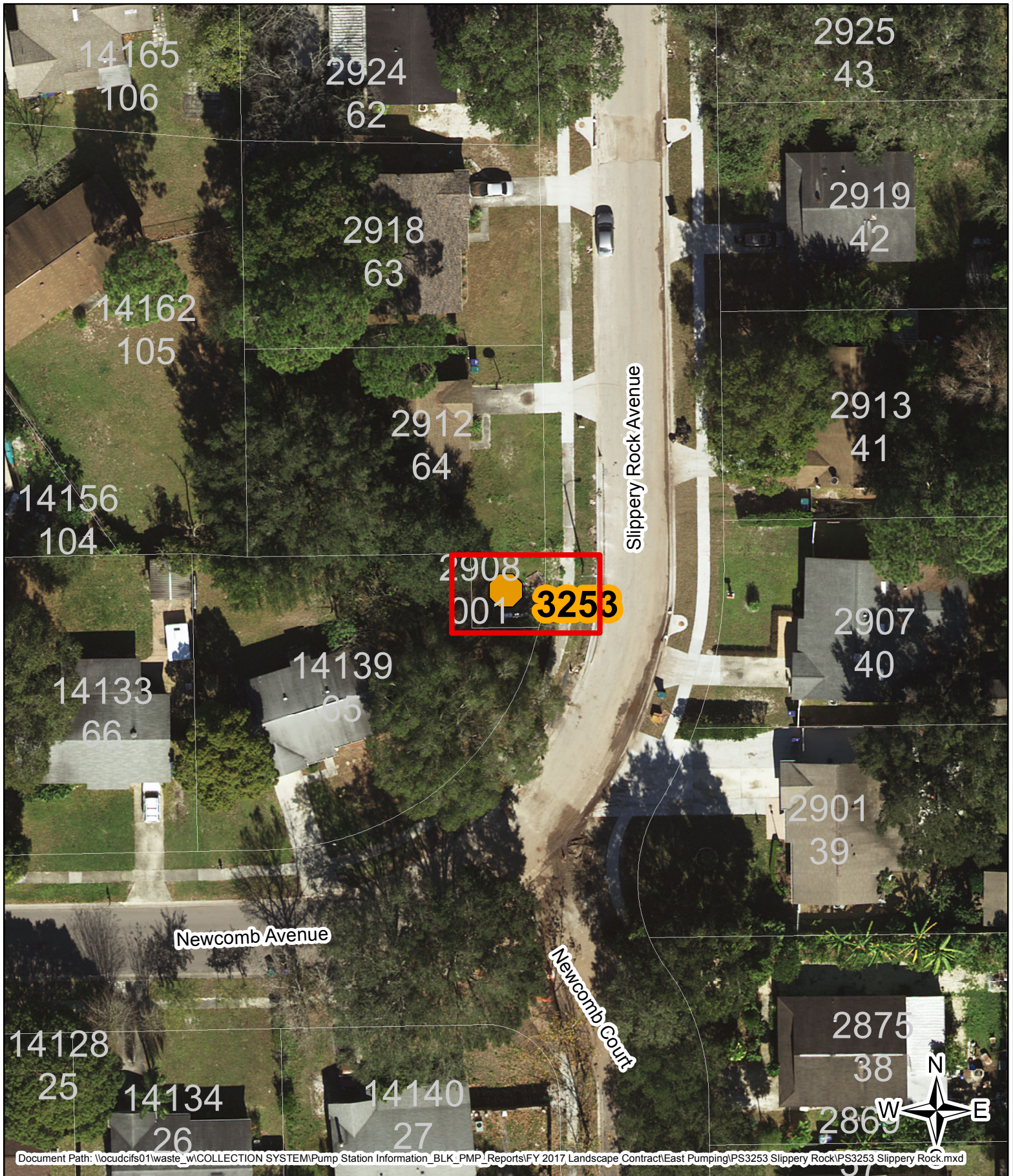
LOCATION: East
PS 3201 - Myrtle
5708 Old Cheney Highway
Orlando, FL 32807
Line Item #4
Area: 10,316.79 Square Feet

ORANGE COUNTY UTILITIES
FIELD SERVICES DIVISION
PUMP STATION LANDSCAPE MAINTENANCE



LOCATION: East
PS 3253 - Slippery Rock
2908 Slippery Rock Avenue
Orlando, FL 32826
Line Item #5
Area: 1,346.87 Square Feet

ORANGE COUNTY UTILITIES
FIELD SERVICES DIVISION
PUMP STATION LANDSCAPE MAINTENANCE



LOCATION: East
PS 3304 - Chickasaw Trail South
8501 Crossbay Drive
Orlando, FL 32829
Line Item #6
Area: 14,967.36 Square Feet

ORANGE COUNTY UTILITIES
FIELD SERVICES DIVISION
PUMP STATION LANDSCAPE MAINTENANCE



3304

8501

4520
001

001

Crossbay Drive

016

4534
18

007

003

002



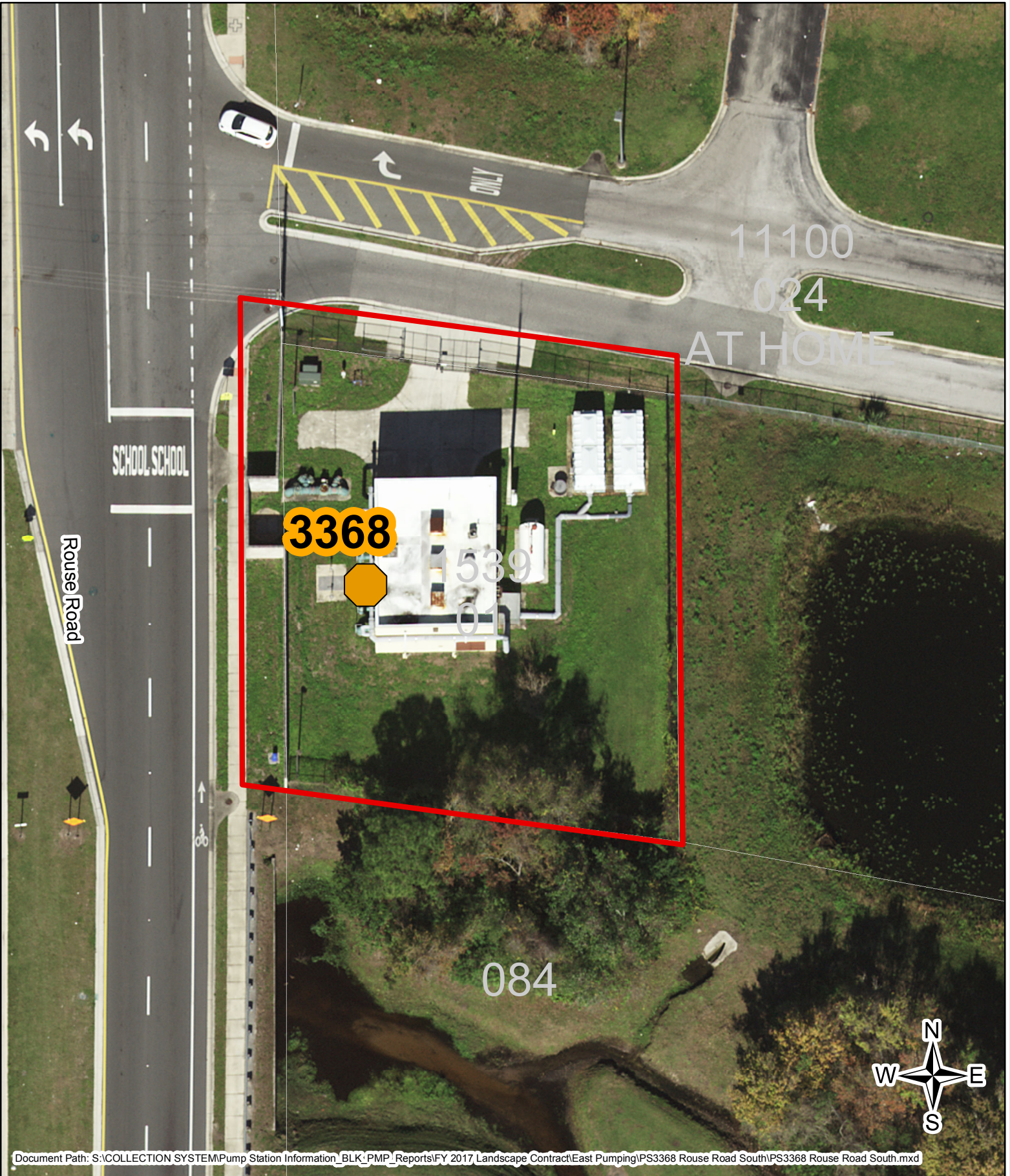
LOCATION: East
PS 3318 - Conway Plant
3801 Manatee Street
Orlando, FL 32822
Line Item #7
Area: 11,510.15 Square Feet

ORANGE COUNTY UTILITIES FIELD SERVICES DIVISION PUMP STATION LANDSCAPE MAINTENANCE



LOCATION: East
PS 3368 - Rouse Road South
1539 Rouse Rd.(1539 Rose Blvd.)
Orlando, FL 32817
Line Item #8
Area: 15,439.48 Square Feet

ORANGE COUNTY UTILITIES
FIELD SERVICES DIVISION
PUMP STATION LANDSCAPE MAINTENANCE



LOCATION: East
PS 3407 - Commerce Boulevard
6135 Cornelia Avenue
Orlando, FL 32807
Line Item #9
Area: 32,507.91 Square Feet

ORANGE COUNTY UTILITIES
FIELD SERVICES DIVISION
PUMP STATION LANDSCAPE MAINTENANCE



LOCATION: East
PS 3635 - Caswell
West of 38 Caswell Drive
Orlando, FL 32825
Line Item #10
Area: 6,327.44 Square Feet

ORANGE COUNTY UTILITIES
FIELD SERVICES DIVISION
PUMP STATION LANDSCAPE MAINTENANCE

