

ORANGE COUNTY CORRECTIONS

BUILDING "E" 5th & 6th FLOOR TOUCHSCREEN BID PACKAGE

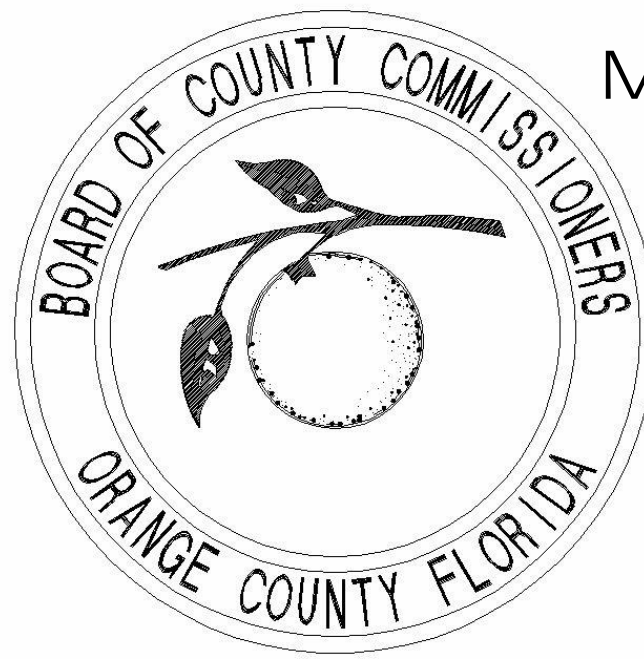
SEPTEMBER 2, 2018

MAYOR
JERRY L. DEMINGS

COMMISSIONER
BETSY VANDERLEY
DISTRICT 1

COMMISSIONER
CHRISTINE MOORE
DISTRICT 2

COMMISSIONER
MAYRA URIBE
DISTRICT 3



COMMISSIONER
MARIBEL GOMEZ CORDERO
DISTRICT 4

COMMISSIONER
EMILY BONILLA
DISTRICT 5

COMMISSIONER
VICTORIA P. SIPLIN
DISTRICT 6

OWNER:
BOARD OF COUNTY
COMMISSIONERS
ORANGE COUNTY, FLORIDA



FL LIC. # AA0002264

ARCHITECTURAL GROUP, INC.
5032 GODDARD AVENUE
ORLANDO, FLORIDA 32804
(407) 245-3660
ORLANDO@MRIARCHITECTS.COM

CONSULTANT



P.O. BOX 907
WINDERMERE, FLORIDA 34786
(800) 830-1103
WWW.FITZGERALDTECHNOLOGYGROUP.COM

PROJECT TITLE AND OWNERS NAME

BUILDING "E", 5th
AND 6th FLOOR CELL
DOOR CONTROLS
UPGRADES

ORLANDO, FLORIDA

O.C. CORRECTIONS

PROJECT TEAM

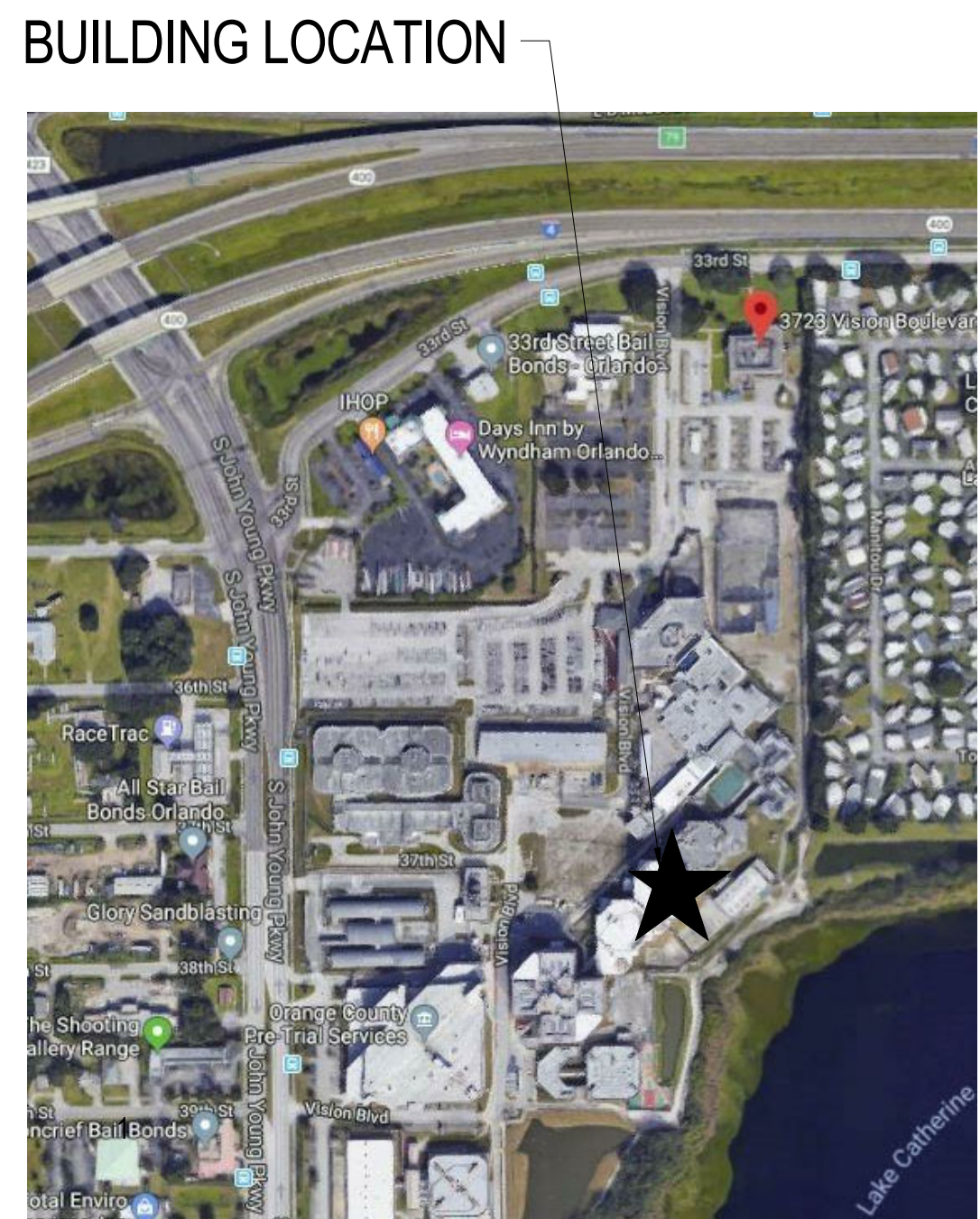


ARCHITECTURAL GROUP, INC.
5032 GODDARD AVENUE, SUITE A, ORLANDO,
TELEPHONE: (407)245-3660
www.mriarchitects.com FL. LIC. #



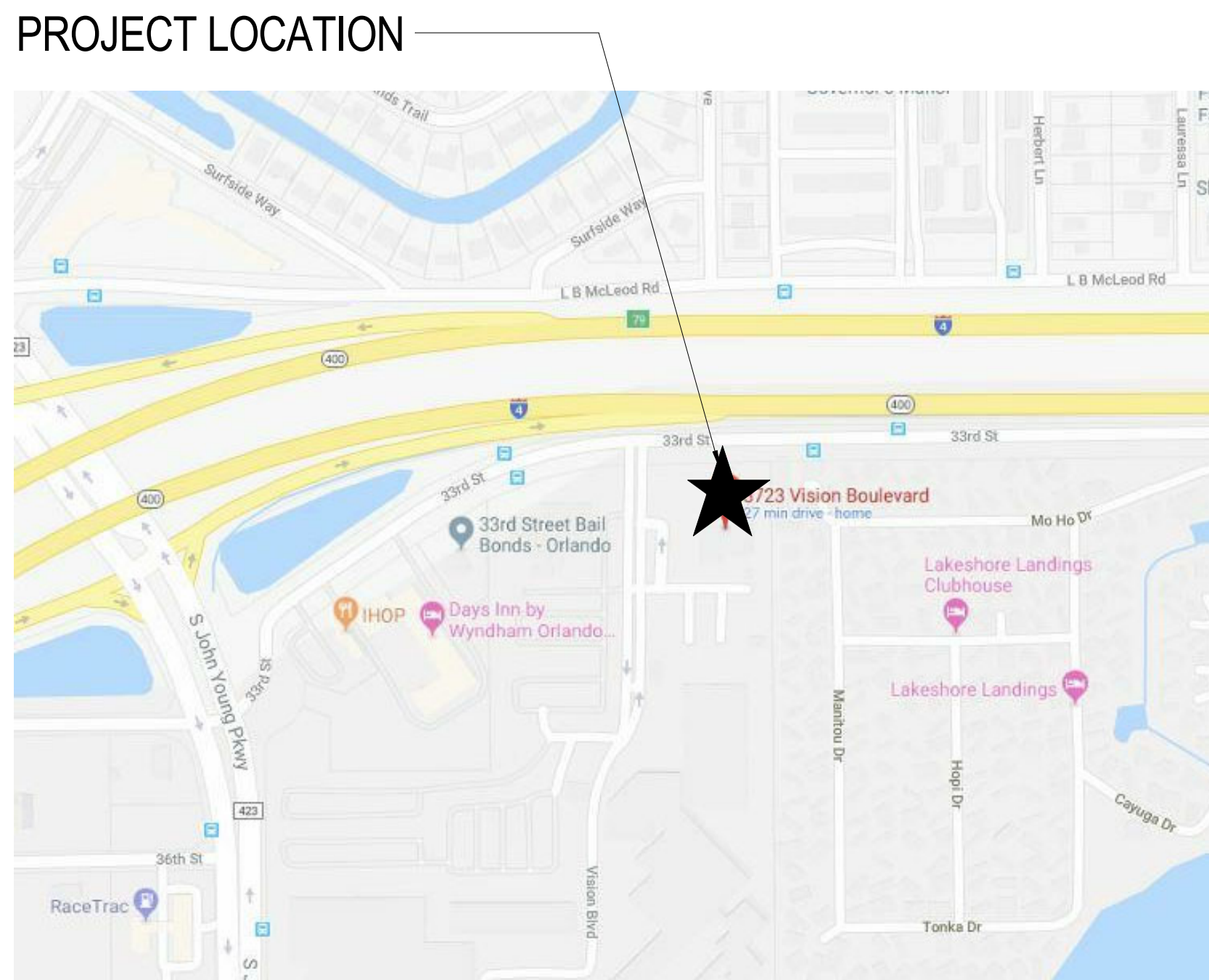
P.O. BOX 907
WINDERMERE, FLORIDA 34786
(800) 830-1103
WWW.FITZGERALDTECHNOLOGYGROUP.COM

BUILDING LOCATION



BUILDING "E"
5th AND 6th FLOORS

VICINITY MAP



3723 VISION BLVD.
ORLANDO, FL 32839

SHEET INDEX

GENERAL
G0.1 COVER SHEET

ARCHITECTURAL
A1.1 5th FLOOR TOUCHSCREEN SYSTEM PLAN
A1.2 6th FLOOR TOUCHSCREEN SYSTEM PLAN

BID PACKAGE

REVISIONS

DRAWN
MRI

CHECKED
BSY

JOB
1731 - O.C. CORRECTIONS

DATE
09-02-18

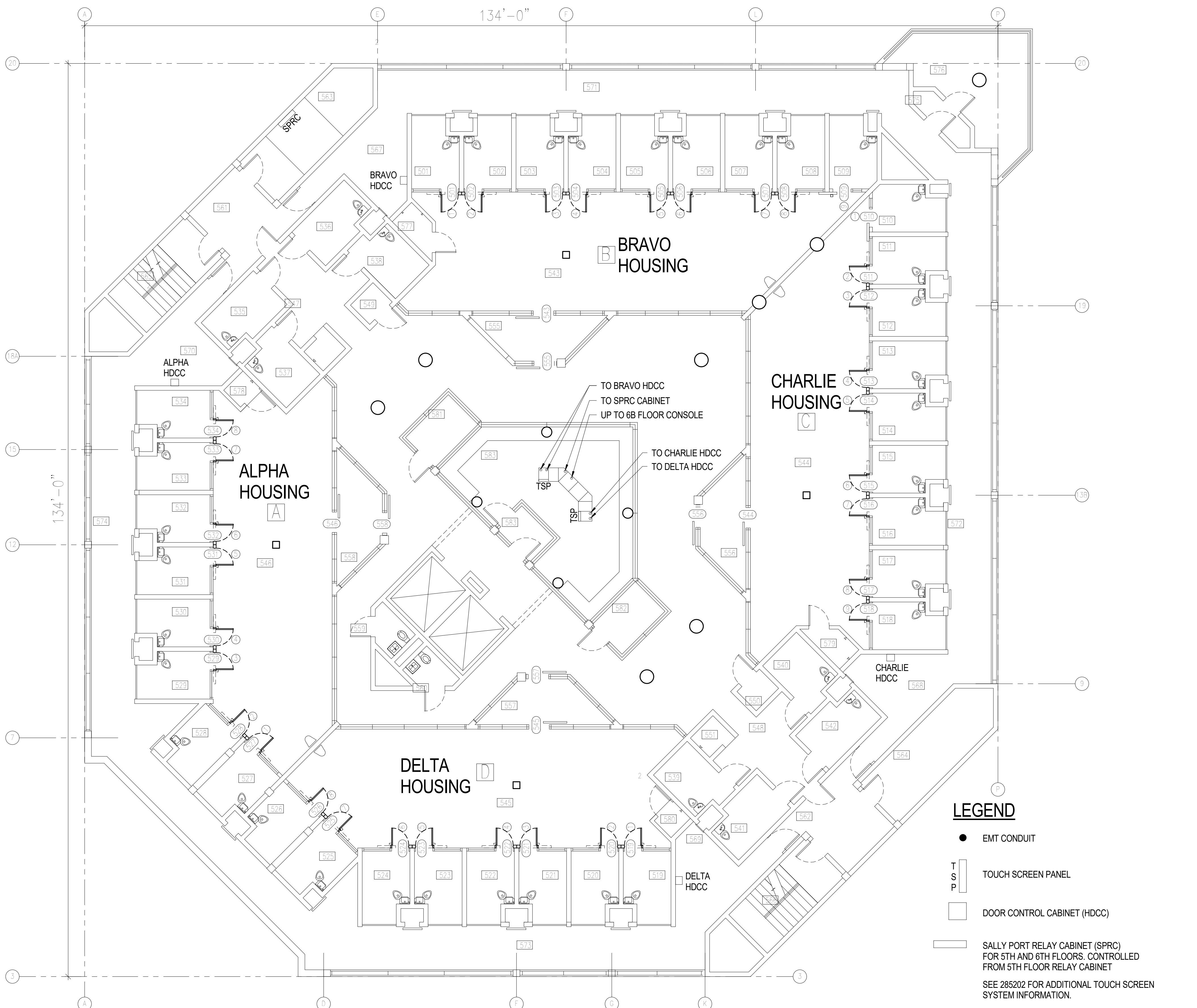
DRAWING TITLE
COVER SHEET



G0.1

SHEET OF

COPYRIGHT © 2015 MRI ARCHITECTURAL GROUP



LEGEND

- EMT CONDUIT
- T S P TOUCH SCREEN PANEL
- DOOR CONTROL CABINET (HDCC)
- ▭ SALLY PORT RELAY CABINET (SPRC) FOR 5TH AND 6TH FLOORS. CONTROLLED FROM 5TH FLOOR RELAY CABINET

SEE 285202 FOR ADDITIONAL TOUCH SCREEN SYSTEM INFORMATION.

N

0 4' 8' 20'

1/8" = 1'-0"

A5 5th FLOOR PLAN
A1.1 1/8" = 1'-0"

P:\1731 - O.C. Corrections 5th & 6th FL Control Panels\1731 - Design\1731 - Corrections.rvt
3/4/2019 12:52:07 PM



ARCHITECTURAL GROUP, INC.
5032 GODDARD AVENUE
ORLANDO, FLORIDA 32804
(407) 245-3660
ORLANDO@MRIARCHITECTS.COM
CONSULTANT



P.O. BOX 907
WINDERMERE, FLORIDA 34786
(800) 830-1103
WWW.FITZGERALDTECHNOLOGYGROUP.COM

PROJECT TITLE AND OWNERS NAME
BUILDING "E", 5th AND 6th FLOOR CELL DOOR CONTROLS UPGRADES

ORLANDO, FLORIDA

O.C. CORRECTIONS

BID PACKAGE

REVISIONS

DRAWN
MS-G
CHECKED
BSY
JOB
1731 - O.C. CORRECTIONS
DATE

09-02-18

DRAWING TITLE
5TH FLOOR TOUCHSCREEN SYSTEM PLAN

DRAWING

A1.1



FL LIC. # AA0002284

ARCHITECTURAL GROUP, INC.
5032 GODDARD AVENUE
ORLANDO, FLORIDA 32804
(407) 245-3660
ORLANDO@MRIARCHITECTS.COM

CONSULTANT



P.O. BOX 907
WINDERMERE, FLORIDA 34786
(800) 830-1103
WWW.FITZGERALDTECHNOLOGYGROUP.COM

PROJECT TITLE AND OWNERS NAME

**BUILDING "E", 5th
AND 6th FLOOR CELL
DOOR CONTROLS
UPGRADES**

ORLANDO, FLORIDA

O.C. CORRECTIONS

BID PACKAGE

REVISIONS

NO.	DATE	DESCRIPTION

DRAWN

MS-G

CHECKED

BSY

JOB

1731 - O.C.
CORRECTIONS

DATE

09-02-18

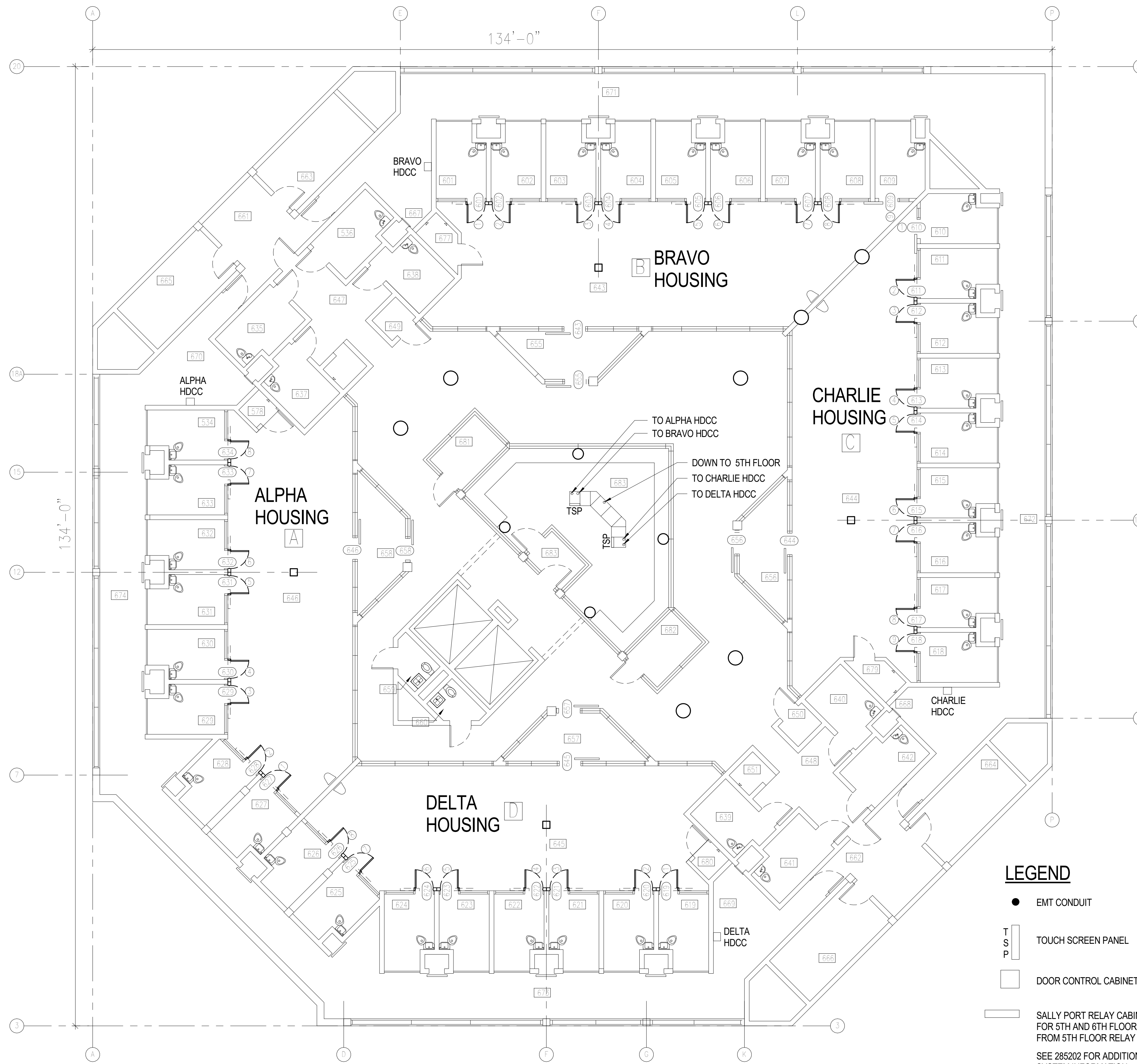
DRAWING TITLE

**6TH FLOOR
TOUCHSCREEN SYSTEM
PLAN**

DRAWING

A1.2

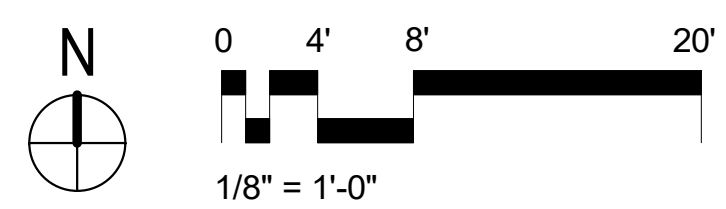
SHEET OF
COPYRIGHT © 2015 MRI ARCHITECTURAL GROUP



A5 6TH FLOOR PLAN
A1.2 1/8" = 1'-0"

LEGEND

- EMT CONDUIT
- T S P TOUCH SCREEN PANEL
- DOOR CONTROL CABINET (HDCC)
- ▭ SALLY PORT RELAY CABINET (SPRC) FOR 5TH AND 6TH FLOORS. CONTROLLED FROM 5TH FLOOR RELAY CABINET. SEE 285202 FOR ADDITIONAL TOUCH SCREEN SYSTEM INFORMATION.



P:\1731 - O.C. Corrections 5th & 6th FL Control Panels\1731 - O.C\1731 - Corrections.rvt
3/4/2019 12:52:00 PM