

**April 16, 2019**  
**BOARD OF COUNTY COMMISSIONERS**  
**ORANGE COUNTY, FLORIDA**  
**Y19-750-JS / ADDENDUM # 1**  
**ORANGE COUNTY CONVENTION CENTER**  
**CAMPUS SOUTH ACCESS/TRADESHOW BOULEVARD IMPROVEMENTS**

**Bid Opening Date: May 2, 2019**

This addendum is hereby incorporated into the bid documents of the project referenced above. The following items are clarifications, corrections, additions, deletions and/or revisions to and shall take precedence over the original documents. Underlining indicates additions, deletions are indicated by ~~strikethrough~~.

A. The Bid Opening Date remains as May 2, 2019.

B. The following are questions/responses/clarifications:

1. Are you accepting experience other than UNITED STATES, ALASKA AND HAWAII ?

**Response: Per the bid documents, only experience within the United States, Alaska and Hawaii will be accepted.**

2. Please provide details on which lockable bollard by Ideal shield is required so we may price accordingly.

**Response: The County currently uses Ideal Shield 4" removable bollards. Please reference the attached cut sheet.**

C. ATTACHMENTS:

1. **Ideal Shield Specification Sheet**
2. **Revised Bid Forms D4-D6: Schedule of Prices** (note, changes in orange)
3. **Revised Drawing Sheets: 1,67,68,69,AA-1,AA-2,AA-3,AA-8,AA-9,AA-12,AA-15,AA-16,AA-17,AA-17A,SQ-1,SQ-14,SQ-15.**

D. All other term and conditions of the IFB remain the same.

E. The Proposer shall acknowledge receipt of this addendum by completing the applicable section in the solicitation or by completion of the acknowledgement information on the addendum. Either form of acknowledgement must be completed and returned not later than the date and time for receipt of the proposal.

**Receipt acknowledged by:**

---

**Authorized Signature**

---

**Date Signed**

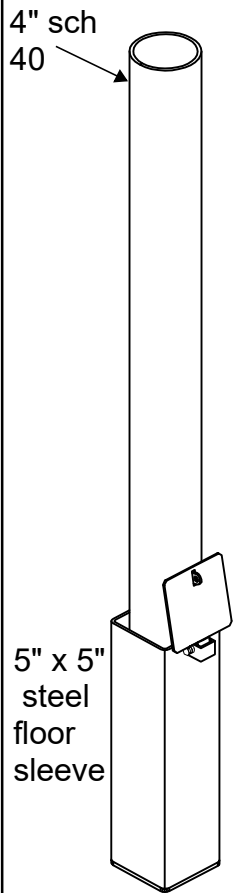
---

**Title**

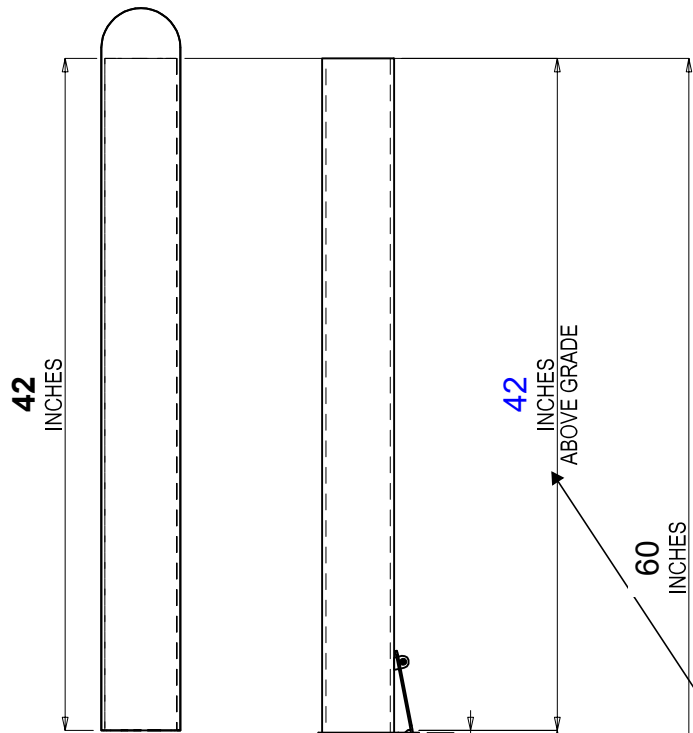
---

**Name of Firm**

Apr 06 2017 11:28:33



ISOMETRIC



IDEAL 1/4" THICK BUMPER POST DOME PLASTIC SLEEVE

Yellow

Yellow = YL

Blue = BL

Black = BK

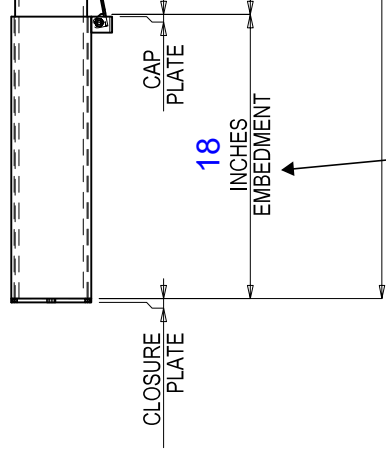
White = WT

Green = GR

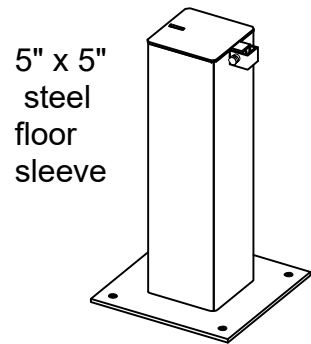
Pink = PK

Red = RD

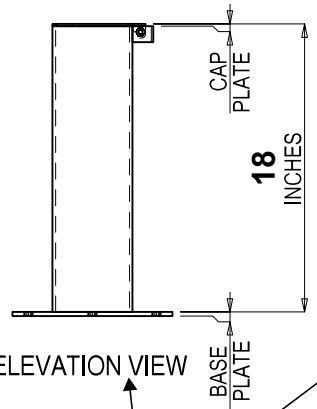
Custom = CS



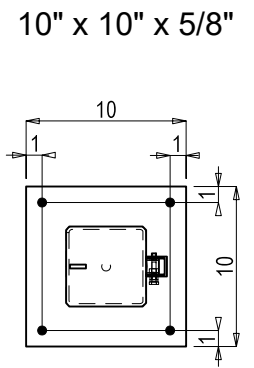
BOLLARD & EMBEDMENT SLEEVE



ISOMETRIC



ELEVATION VIEW



PLAN VIEW

INCLUDE STATIONARY LOCKING STAND:

Please specify cored depth and bollard height

CUSTOMER INFORMATION:

	<b>Ideal Shield</b> 2525 Clark Street Detroit, MI 48209	
	<b>REMOVABLE LOCKING BOLLARD SPECIFICATION SHEET</b>	
CONTACT US FOR A QUOTE TODAY 1-866-825-8659 www.IDEALSHIELD.com	<u>RECOMMENDED USE:</u> EMBED IN CONCRETE	<b>REM - YL - 4 - 42 - C - 18</b>

**Y19-750-JS; ORANGE COUNTY CONVENTION CENTER  
CAMPUS SOUTH ACCESS/ TRADESHOW BOULEVARD IMPROVEMENTS,  
AND JAMES BOYD ENTRANCE IMPROVEMENTS (ADDITIVE ALTERNATE 1)  
SCHEDULE OF PRICES**

NO.	ITEM NO.	DESCRIPTION	UNIT	EST. QTY	UNIT COST	TOTAL
1	101-1	MOBILIZATION	LS	1		
2	102-1	MAINTENANCE OF TRAFFIC	LS	1		
3	104-14	PREVENTION/CONTROL/ABATEMENT OF EROSION AND WATER POLLUTION	LS	1		
4	110-1-1	CLEARING AND GRUBBING (4.3 AC)	LS	1		
5	120-9	EARTHWORK (EXCAVATION, EMBANKMENT, AND GRADING)	LS	1		
6	160-4	TYPE B STABILIZATION - (MIN. LBR 40) (12")	SY	7,115		
7	285-709	BASE GROUP 09 (TYPE B-12.5) (6")	SY	2,816		
8	285-712	BASE GROUP 12 (TYPE B-12.5) (7.5")	SY	2,835		
9	327-70-6	MILLING EXISTING ASPHALT PAVEMENT (1.5" AVERAGE DEPTH)	SY	8,471		
10	334-1-13A	TYPE SP STRUCTURAL COURSE (TRAFFIC LEVEL C) (1.5")	SY	8,471		
11	334-1-13B	TYPE SP STRUCTURAL COURSE (TRAFFIC LEVEL C) (3.0")	SY	5,650		
12	337-7-83	ASPH. CONC. FRICTION COURSE (TRAFFIC C, FC-12.5, PG 76-22) (1.5")	SY	383		
13	400-1-15	CLASS I CONCRETE (MISCELLANEOUS)	CY	5		
14	425-1-311	INLETS - CURB TYPE P-1 (<10')	EA	2		
15	425-1-321	INLETS - CURB TYPE P-2 (<10')	EA	1		
16	425-1-331	INLETS - CURB TYPE P-3 (<10')	EA	3		
17	425-1-341	INLETS - CURB TYPE P-4 (<10')	EA	5		
18	425-1-361	INLETS - CURB TYPE P-6 (<10')	EA	2		
19	425-2-71	MANHOLES - TYPE J-7 (<10')	EA	2		
20	425-5	MANHOLE, ADJUST	EA	1		
21	425-5-1	MANHOLE, ADJUST, UTILITIES	EA	4		
22	425-6	VALVE BOX, ADJUST	EA	3		
23	425-11	MODIFY EXISTING DRAINAGE STRUCTURE	EA	3		
24	430-94-1	DESILT EXISTING PIPE (0" - 24")	LF	300		
25	430-94-2	DESILT EXISTING PIPE (25" -36")	LF	50		
26	430-94-3	DESILT EXISTING PIPE (37" - 48")	LF	74		
27	430-94-4	DESILT EXISTING PIPE (49" - 60")	LF	115		
28	430-94-5	DESILT EXISTING PIPE (GREATER THAN 60")	LF	1779		
29	430-175-118	PIPE CULVERT - SRCP (S/CD) (ROUND) (18")	LF	1,003		
30	519-78-9	REMOVABLE BOLLARDS	EA	6		
31	520-1-7	CONCRETE CURB & GUTTER (TYPE E)	LF	520		
32	520-1-10	CONCRETE CURB & GUTTER (TYPE F)	LF	3,909		
33	570-1-2	PERFORMANCE TURF (SODDING)	SY	14,686		
34	635-2-99	ADJUST EXISTING VAULT	EA	1		
35	700-1-11	SINGLE POST SIGN (F&I) GROUND MOUNT (UP TO 12 S.F.)	AS	14		
36	700-1-12	SINGLE SIGN POST (F&I) GROUND MOUNT (12 S.F. TO 20 S.F.)	AS	6		
37	700-1-50	SINGLE POST SIGN - RELOCATE	AS	9		
38	700-1-60	SINGLE POST SIGN - REMOVE	AS	13		
39	705-10-1	OBJECT MARKER - TYPE 1 (18"+ DIAMOND)	EA	3		
40	706-3	RETRO-REFLECTIVE PAVEMENT MARKERS	EA	220		



**Y19-750-JS; ORANGE COUNTY CONVENTION CENTER  
 CAMPUS SOUTH ACCESS/ TRADESHOW BOULEVARD IMPROVEMENTS,  
 AND JAMES BOYD ENTRANCE IMPROVEMENTS (ADDITIVE ALTERNATE 1)  
 SCHEDULE OF PRICES**

NO.	ITEM NO.	DESCRIPTION	UNIT	EST. QTY	UNIT COST	TOTAL
41	710-90	PAINTED PAVEMENT MARKINGS - FINAL SURFACE	LS	1		
42	711-11-124	THERMOPLASTIC PAVEMENT MARKINGS (STANDARD) - WHITE (SOLID)	LF	555		
43	711-11-125	THERMOPLASTIC PAVEMENT MARKINGS (STANDARD) - WHITE (SOLID)	LF	193		
44	711-11-141	THERMOPLASTIC PAVEMENT MARKINGS (STANDARD) - WHITE (2'-4' DOTTED GUIDELINE / 6'-1'- GAP EXTENSION) (6")	GM	0.031		
45	711-11-160	THERMOPLASTIC PAVEMENT MARKINGS (STANDARD) - WHITE (MESSAGES)	EA	10		
46	711-11-170	THERMOPLASTIC PAVEMENT MARKINGS (STANDARD) - WHITE (ARROWS)	EA	39		
47	711-11-224	THERMOPLASTIC PAVEMENT MARKINGS (STANDARD) - YELLOW (SOLID)(18")	LF	48		
48	711-16-101	THERMOPLASTIC PAVEMENT MARKINGS (STANDARD-OTHER SURFACES) - WHITE (SOLID) (6")	GM	1.119		
49	711-16-131	THERMOPLASTIC PAVEMENT MARKINGS (STANDARD-OTHER SURFACES) - WHITE, SKIP, 6", (10'-30' SKIP OR 3'-9' LANE DROP)	GM	0.482		
50	711-16-201	THERMOPLASTIC PAVEMENT MARKINGS (STANDARD-OTHER SURFACES) - YELLOW (SOLID) (6")	GM	0.766		
51	900-1	AS-BUILT PLANS	LS	1		
52	900-2	INDEMNIFICATION	LS	1	\$ 100.00	\$ 100.00
53	900-3	GROUNDWATER TREATMENT AND DISPOSAL	ED	30		
<b>ESTIMATED BASE BID FOR TRADESHOW BLVD; NUMBERS 1 through 53: \$ _____</b>						
<b>ADDITIVE ALTERNATE 1</b>						
No.	ITEM NUMBER	DESCRIPTION	UNIT	EST. QTY	UNIT COST	TOTAL
54	102-1	MAINTENANCE OF TRAFFIC	LS	1		
55	104-14	PREVENTION/CONTROL/ABATEMENT OF EROSION AND WATER POLLUTION	LS	1		
56	110-1-1	CLEARING AND GRUBBING (0.15 AC)	LS	1		
57	120-9	EARTHWORK (EXCAVATION, EMBANKMENT, AND GRADING)	LS	1		
58	160-4	TYPE B STABILIZATION - (MIN. LBR 40) (12")	SY	405		
59	285-709	BASE GROUP 09 (TYPE B-12.5) (6")	SY	309		
60	327-70-6	MILLING EXISTING ASPHALT PAVEMENT (1.5" AVERAGE DEPTH)	SY	2,389		
61	334-1-13A	TYPE SP STRUCTURAL COURSE (TRAFFIC LEVEL C) (1.5")	SY	2,389		
62	334-1-13B	TYPE SP STRUCTURAL COURSE (TRAFFIC LEVEL C) (3.0")	SY	309		
63	430-94-1	DESILT EXISTING PIPE (0" - 24")	LF	80		
64	430-175-118	PIPE CULVERT - SRCP (S/CD) (ROUND) (18")	LF	24		
65	430-982-125	MITERED END SECTION (CD) (18" ROUND) (1:4)	EA	1		
66	519-78	BOLLARDS	EA	2		
67	520-2-4	CONCRETE CURB TYPE D	LF	6		
68	520-5-41	CONCRETE TRAFFIC SEPARATOR (TYPE IV, OPTION II) (4')	LF	92		
69	550-10-220	FENCING, TYPE B, STANDARD FEATURES	LF	40		
70	550-60-912	GATE (SPECIAL) BARRIER GATE OPERATOR W/LED ILLUMINATED ARM	EA	3		
71	570-1-2	PERFORMANCE TURF (SODDING)	SY	405		
72	630-2-11	CONDUIT (F&I) (OPEN TRENCH)	LF	665		
73	630-2-12	CONDUIT (F&I) (UNDER PAVEMENT)	LF	180		
74	635-2-11	PULL & SPLICE BOXES (F&I) (13"x24" COVER SIZE)	EA	21		
75	700-1-11	SINGLE POST SIGN (F&I) GROUND MOUNT (UP TO 12 S.F.)	AS	3		

**Y19-750-JS; ORANGE COUNTY CONVENTION CENTER  
 CAMPUS SOUTH ACCESS/ TRADESHOW BOULEVARD IMPROVEMENTS,  
 AND JAMES BOYD ENTRANCE IMPROVEMENTS (ADDITIVE ALTERNATE 1)  
 SCHEDULE OF PRICES**

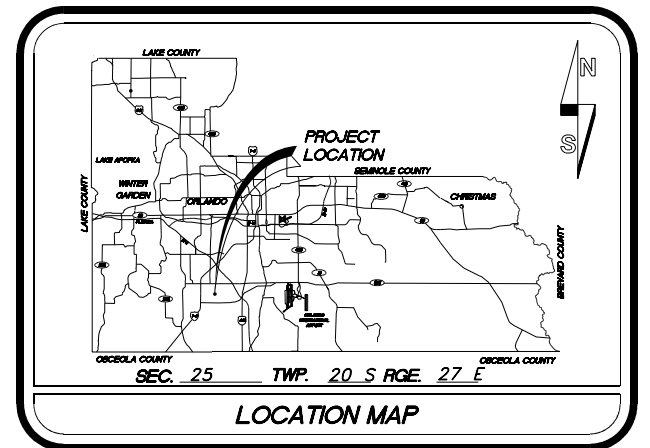
<b>NO.</b>	<b>ITEM NO.</b>	<b>DESCRIPTION</b>	<b>UNIT</b>	<b>EST. QTY</b>	<b>UNIT COST</b>	<b>TOTAL</b>
76	700-1-60	SINGLE POST SIGN - REMOVE	AS	3		
77	706-3	RETRO-REFLECTIVE PAVEMENT MARKERS	EA	65		
78	711-11-125	THERMOPLASTIC PAVEMENT MARKINGS (STANDARD) - WHITE (SOLID) (24")	LF	100		
79	711-11-160	THERMOPLASTIC PAVEMENT MARKINGS (STANDARD) - WHITE (MESSAGES)	EA	6		
80	711-11-224	THERMOPLASTIC PAVEMENT MARKINGS (STANDARD) - YELLOW (SOLID)(18")	LF	210		
81	711-11-241	THERMOPLASTIC PAVEMENT MARKINGS (STANDARD) - YELLOW (2'-4' GUIDELINE) (6")	GM	0.05		
82	711-11-421	THERMOPLASTIC PAVEMENT MARKINGS (STANDARD) - BLUE (SOLID) (6")	LF	85		
83	711-16-101	THERMOPLASTIC PAVEMENT MARKINGS (STANDARD OTHER SURFACES) - WHITE (SOLID) (6")	GM	0.225		
84	711-16-201	THERMOPLASTIC PAVEMENT MARKINGS (STANDARD OTHER SURFACES) - YELLOW (SOLID) (6")	GM	0.165		
85	900-1	AS-BUILT PLANS	LS	1		
86	900-3	GROUNDWATER TREATMENT AND DISPOSAL	ED	30		
<b>ESTIMATED BASE BID FOR NO. 54 through 86 (JAMES BOYD ADDITIVE): \$ _____</b>						
<b>TOTAL ESTIMATED BASE BID FOR NO. 1 through 86 (TRADESHOW BLVD + JAMES BOYD): \$ _____</b>						



# CONSTRUCTION PLANS FOR ORANGE COUNTY CONVENTION CENTER CAMPUS SOUTH ACCESS / TRADESHOW BOULEVARD IMPROVEMENTS

## DISTRICT NO: 6 ORANGE COUNTY, FLORIDA

**FINAL PLANS  
MARCH 13, 2019  
ADDENDUM 1  
APRIL 9, 2019**



**INDEX OF SHEETS**

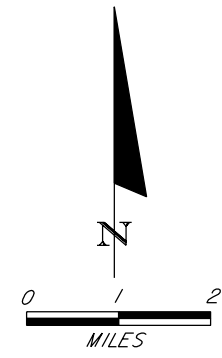
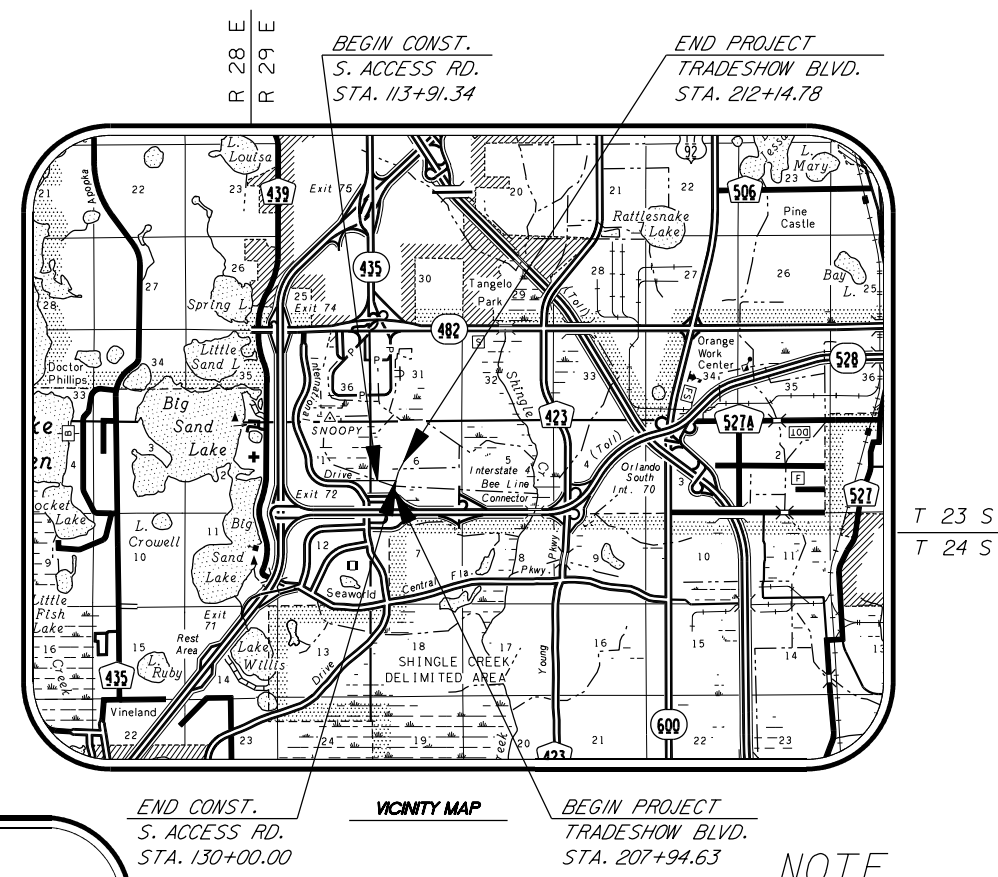
SHEET	DESCRIPTION
1	COVER SHEET
2	SUMMARY OF PAY ITEMS
3	PAY ITEM NOTES
4	DRAINAGE MAP
5	EXISTING STRUCTURES
6	GENERAL NOTES AND DETAILS
7-11	TYPICAL SECTIONS
12	SUMMARY OF QUANTITIES
13	SUMMARY OF DRAINAGE STRUCTURES
14	DRAINAGE DETAILS
15-16	PROJECT LAYOUT
17	SURVEY CONTROL
18-22	PLAN SHEETS
23-28	PROFILE SHEETS
29-37	DRAINAGE STRUCTURE CROSS SECTIONS
38-39	EROSION CONTROL DETAILS
40-41	STORMWATER POLLUTION PREVENTION PLAN
42-45	ROADWAY SOIL SURVEY/BORINGS/PROBES
46-60	CROSS SECTIONS
61-66	CONSTRUCTION PHASING/TRAFFIC CONTROL PLAN
67-71	UTILITY ADJUSTMENT SHEETS
72-80	SUBSURFACE UTILITY INFORMATION
S-1 TO S-8	SIGNING AND PAVEMENT MARKING PLANS
AA-1 TO AA-19	JAMES BOYD ENTRANCE IMPROVEMENTS ADDITIVE ALTERNATE 1

**SOURCE OF BENCHMARK DATUM**

NOTE: ELEVATIONS SHOWN HERE ARE BASED UPON ORANGE COUNTY VERTICAL DATUM BEING (NGVD29) AS DERIVED FROM BENCHMARKS

SITE BENCHMARK NO. 1 SET NAIL & DISK STAMPED "SSMC TRAV.PT." ELEVATION=98.90 STA. 116+43.82 (151.15' LT.) (CL CONST ACCESS)	SITE BENCHMARK NO. 2 SET 5/8" IRON ROD STAMPED "SSMC TRAV.PT." ELEVATION=98.84 STA. 123+47.19 (97.55' LT.) CL CONST ACCESS
SITE BENCHMARK NO. 3 SET 5/8" IRON ROD STAMPED "SSMC TRAV.PT." ELEVATION=96.35 STA. 127+02.44 (290.64' LT.) CL CONST ACCESS	SITE BENCHMARK NO. 4 SET 5/8" IRON ROD STAMPED "SSMC TRAV.PT." ELEVATION=93.73 STA. 201+38.19 (21.47' LT.) CL CONST TRADESHOW
SITE BENCHMARK NO. 5 SET 5/8" IRON ROD STAMPED "SSMC TRAV.PT." ELEVATION=97.08 STA. 209+52.60 (59.86' LT.) CL CONST TRADESHOW	SITE BENCHMARK NO. 6 SET NAIL AND DISK STAMPED "SSMC TRAV.PT." ELEVATION=97.38 STA. 217+23.24 (61.32' LT.) CL CONST TRADESHOW

PROJECT LENGTH:	FEET	MILES
ROADWAY:	2028.81	0.384
BRIDGES:	0.00	0.000
TOTAL LENGTH:	2028.81	0.384



GOVERNING STANDARDS AND SPECIFICATIONS:  
FLORIDA DEPARTMENT OF TRANSPORTATION  
FY2018-19 STANDARD PLANS  
AND STANDARD SPECIFICATIONS FOR ROAD AND  
AND BRIDGE CONSTRUCTION, DATED JANUARY 2019  
AS AMENDED BY CONTRACT DOCUMENTS.

**JERRY L. DEMINGS, COUNTY MAYOR**

---

**BOARD OF COUNTY COMMISSIONERS**

BETSY VANDERLEY	DISTRICT 1
CHRISTINE MOORE	DISTRICT 2
MAYRA URIBE	DISTRICT 3
MARIBEL GOMEZ CORDERO	DISTRICT 4
EMILY BONILLA	DISTRICT 5
VICTORIA P. SIPLIN	DISTRICT 6

**NOTE**

PLANS WERE PREPARED ACCORDING TO AVAILABLE INFORMATION TO ADEQUATELY ADDRESS CONDITIONS AS THEY EXISTED AT THE TIME OF PLANS PREPARATION. NEEDS, CONDITIONS AND OWNERSHIP OF PROPERTIES MAY HAVE CHANGED SINCE PROJECT DESIGN. THE COUNTY'S REPRESENTATIVE WILL ADDRESS CHANGES AND NEEDS WITH THE PROPERTY OWNER OR THEIR REPRESENTATIVES. CONTRACTOR SHALL WORK WITH THE COUNTY'S REPRESENTATIVE IN ADDRESSING AND MEETING NEEDS AND CONDITIONS THAT MAY HAVE CHANGED SINCE PLANS PREPARATION.

**CERTIFICATION TO PLANS**

I HEREBY CERTIFY THAT THE DESIGN FOR THIS PROJECT AND THE ATTACHED CONSTRUCTION PLANS COMPLY WITH THE REQUIREMENTS OF SECTION 336.045 OF THE FLORIDA STATUTES AND ARE IN SUBSTANTIAL CONFORMANCE WITH THE STANDARDS CONTAINED IN THE EDITION OF THE "MANUAL OF UNIFORM MINIMUM STANDARDS FOR DESIGN, CONSTRUCTION AND MAINTENANCE FOR STREETS AND HIGHWAYS" IN EFFECT ON THIS DATE AS ADOPTED BY THE FLORIDA DEPARTMENT OF TRANSPORTATION PURSUANT TO SUBSECTION 336.045(1) OF THE FLORIDA STATUTES.

DATE: \_\_\_\_\_ ENGINEER: FURSAN S. MUNJED, P.E.  
LICENSE NO. 51446  
CERTIFICATE OF AUTHORIZATION NO. 27770

**UTILITIES ENCOUNTERED**

PHONE: AT&T FLORIDA	561-997-0240
SEWER: ORANGE COUNTY PUBLIC UTILITIES	407-254-9764
PHONE : ORLANDO TELEPHONE COMPANY	407-996-6297
WATER : ORLANDO UTILITIES COMMISSION	407-434-2563
POWER: ORLANDO UTILITIES COMMISSION	407-434-2563
STREET LIGHTING: ORLANDO UTILITIES COMMISSION	407-434-2563
GAS: TECO PEOPLES GAS	813-275-3783
CATV: CHARTER COMMUNICATIONS	407-532-8511

**Pegasus ENGINEERING**

PEGASUS ENGINEERING, LLC  
301 WEST STATE ROAD 434, SUITE 309  
WINTER SPRINGS, FLORIDA 32708  
TEL. 407-992-9160  
CERTIFICATE OF AUTHORIZATION NO. 27770

REVISIONS	DATE	BY
ADDENDUM 1	4/9/19	KAJ

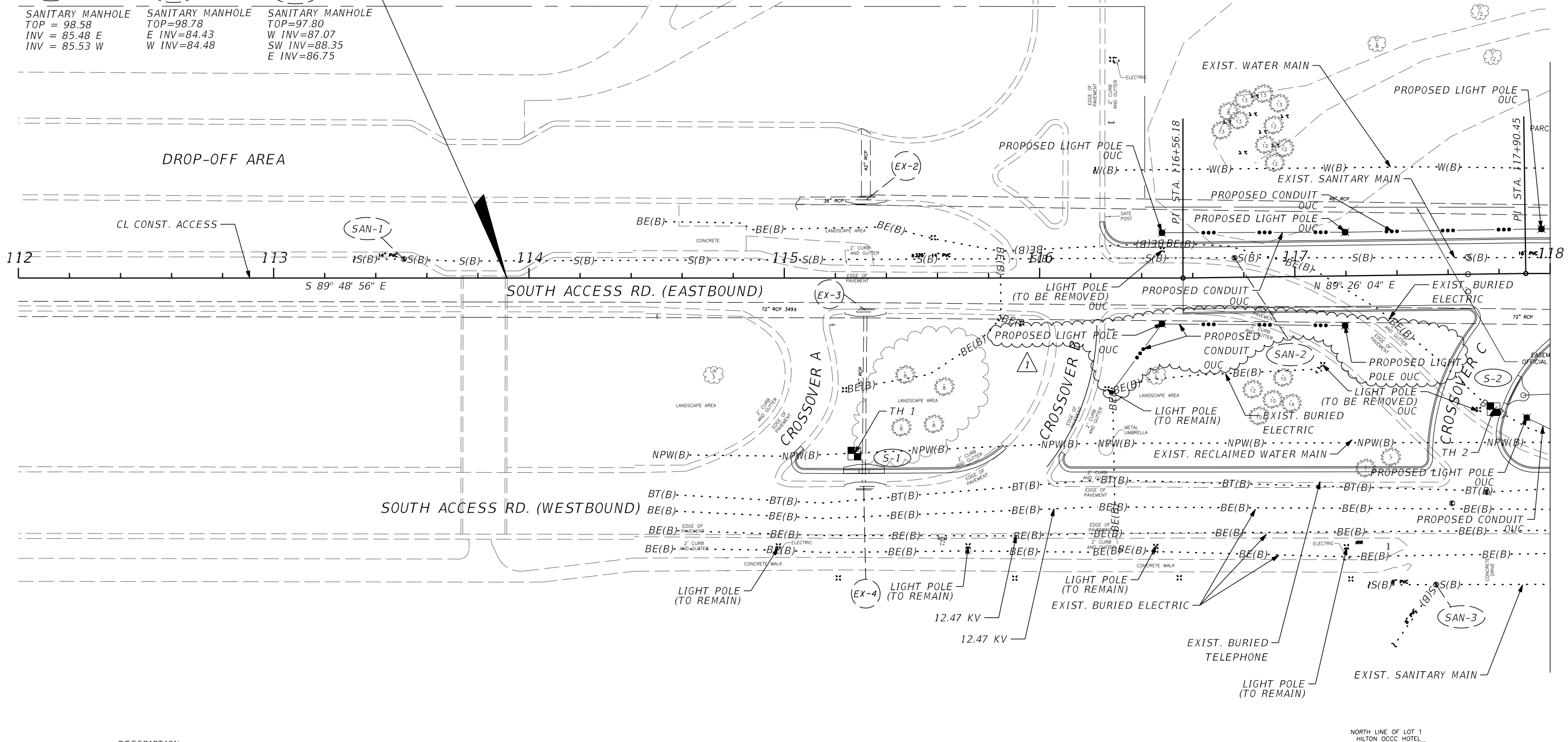
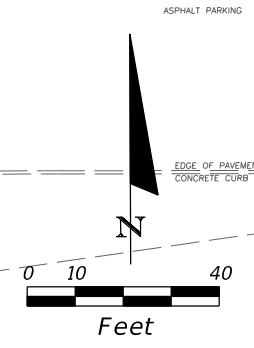
DESIGNED BY: FM DATE: 3-13-19  
DRAWN BY: KAJ DATE: 3-13-19  
CHECKED BY: FM DATE: 3-13-19  
APPROVED BY: FM DATE: 3-13-19  
PROJECT NO: OCC-18048

SHEET 1  
OF 80

**ADDENDUMS**  
4/9/2019 REVISED PLAN SHEETS: 67, 68, 69, AA-1, AA-2, AA-3, AA-8, AA-9, AA-12, AA-15, AA-16, AA-17  
ADDED PLAN SHEET: AA-17A  
REVISED COMPUTATION BOOK SHEETS: SQ-1, SQ-14, SQ-15

BEGIN CONSTRUCTION  
CL CONST. ACCESS ROAD  
STA. 113+91.34

(SAN-1)	(SAN-2)	(SAN-3)
SANITARY MANHOLE TOP = 98.58 INV = 85.48 E INV = 85.53 W	SANITARY MANHOLE TOP=98.78 E INV=84.43 W INV=84.48	SANITARY MANHOLE TOP=97.80 W INV=87.07 SW INV=88.35 E INV=86.75



DESCRIPTION

NORTH LINE OF LOT 1  
HILTON OCC HOTEL

REVISIONS					
DATE	BY	DESCRIPTION	DATE	BY	DESCRIPTION
4/9/19	KAJ	ADDENDUM 1 PROP. LIGHTING ADDED			

ENGINEER OF RECORD:  
FURSAN MUNJED, P.E.  
LICENSE # 51446  
PEGASUS ENGINEERING, LLC  
301 WEST STATE ROAD 434, SUITE 309  
WINTER SPRINGS, FLORIDA 32708  
TEL. 407-992-9160  
CERTIFICATE OF AUTHORIZATION NO. 27770

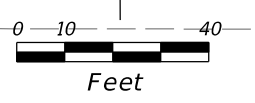
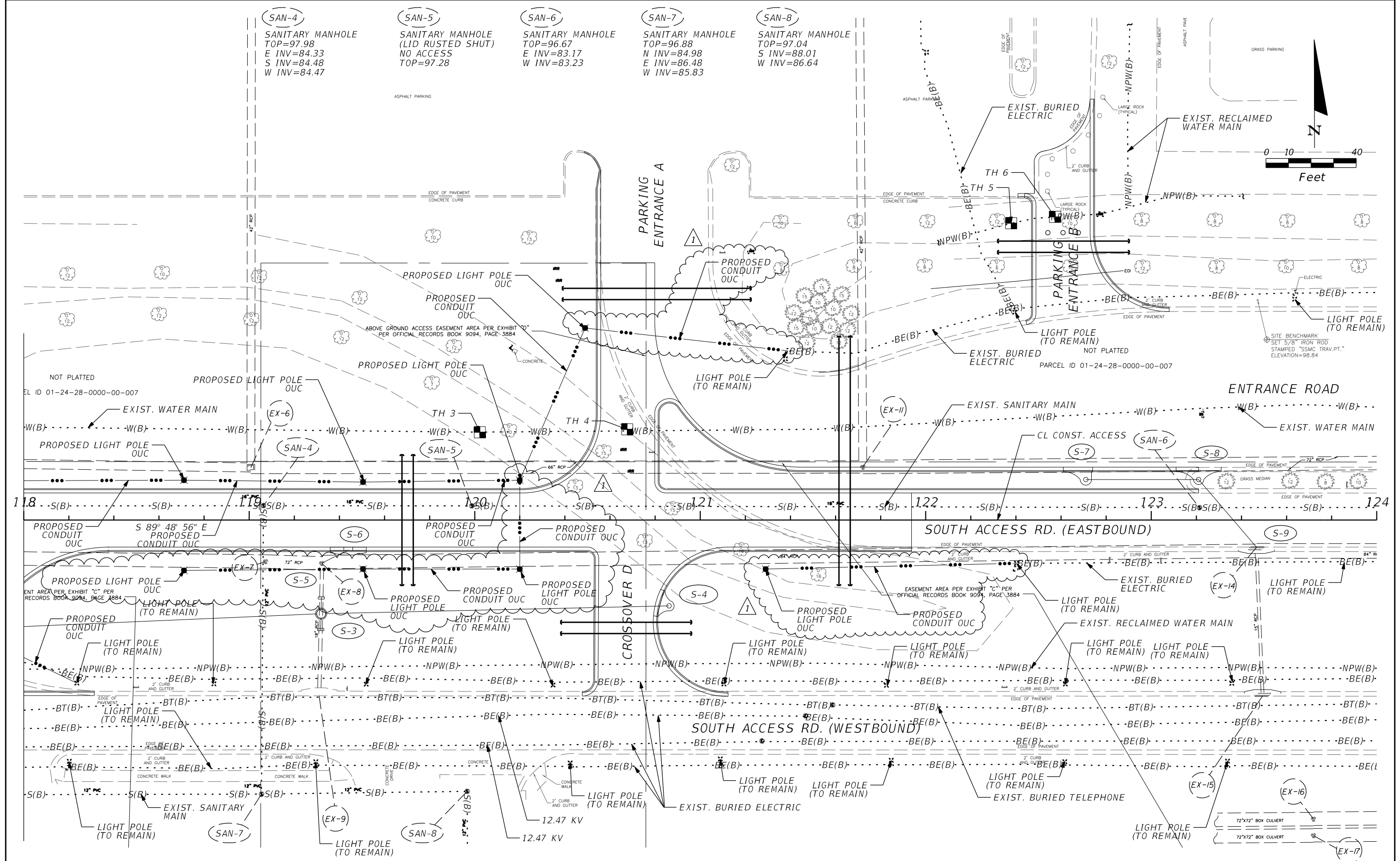


ROAD	TRADESHOW
	PROJECT NO.
	OCC-18048



UTILITY ADJUSTMENTS  
SOUTH ACCESS ROAD

SHEET NO.  
67



REVISIONS					
DATE	BY	DESCRIPTION	DATE	BY	DESCRIPTION
4/9/19	KAJ	ADDENDUM 1 PROP. LIGHTING ADDED			

ENGINEER OF RECORD:  
 FURSAN MUNJED, P.E.  
 LICENSE # 51446  
 PEGASUS ENGINEERING, LLC  
 301 WEST STATE ROAD 434, SUITE 309  
 WINTER SPRINGS, FLORIDA 32708  
 TEL. 407-992-9160  
 CERTIFICATE OF AUTHORIZATION NO. 27770

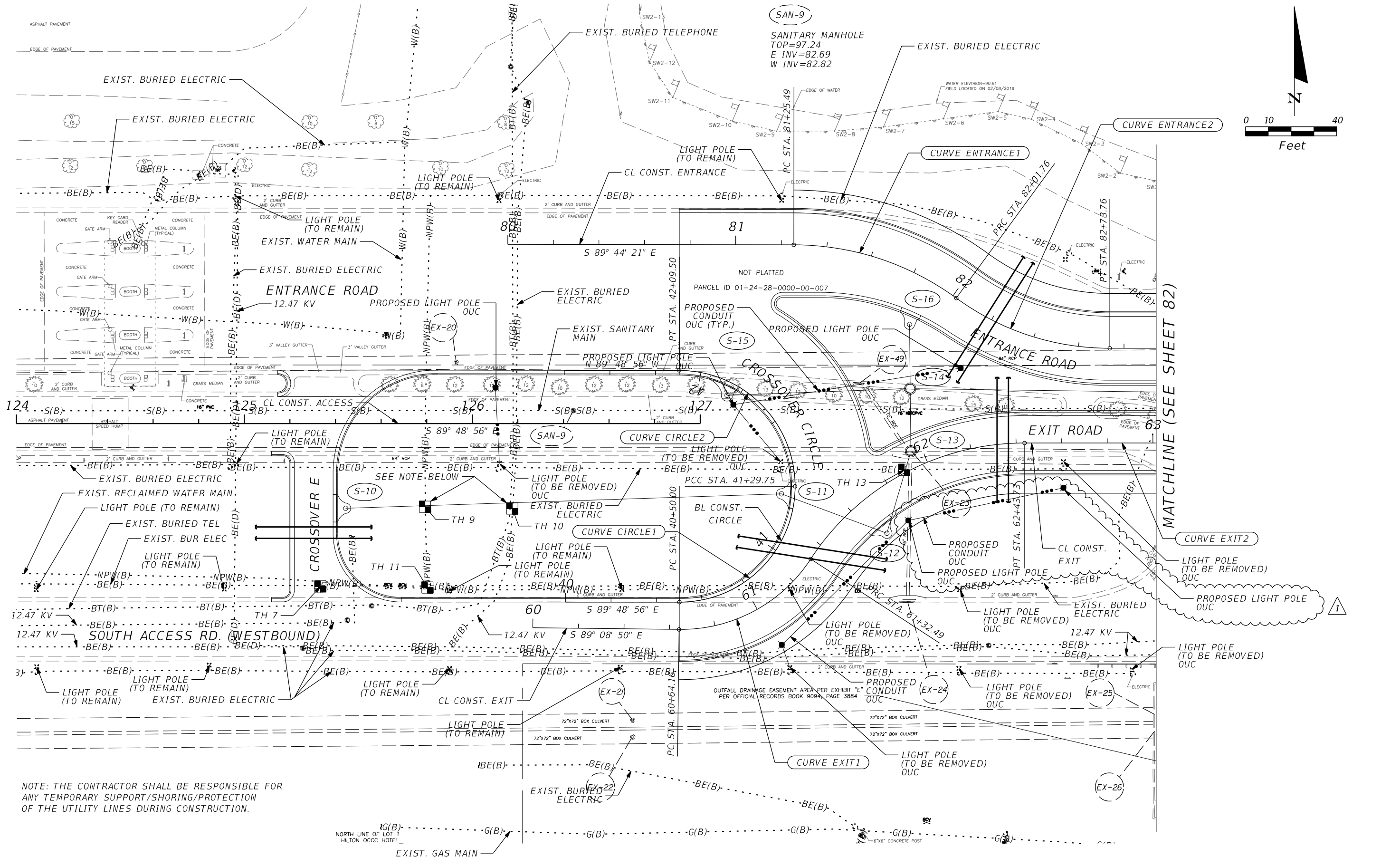


ROAD  
 TRADESHOW  
 PROJECT NO.  
 OCC-18048



UTILITY ADJUSTMENTS  
 SOUTH ACCESS ROAD

SHEET NO.  
 68



NOTE: THE CONTRACTOR SHALL BE RESPONSIBLE FOR ANY TEMPORARY SUPPORT/SHORING/PROTECTION OF THE UTILITY LINES DURING CONSTRUCTION.

REVISIONS					
DATE	BY	DESCRIPTION	DATE	BY	DESCRIPTION
4/9/19	KAJ	ADDENDUM 1 PROP. LIGHTING ADDED			

ENGINEER OF RECORD:  
 FURSAN MUNJED, P.E.  
 LICENSE # 51446  
 PEGASUS ENGINEERING, LLC  
 301 WEST STATE ROAD 434, SUITE 309  
 WINTER SPRINGS, FLORIDA 32708  
 TEL. 407-992-9160  
 CERTIFICATE OF AUTHORIZATION NO. 27770



ROAD	TRADESHOW
	PROJECT NO.
	OCC-18048

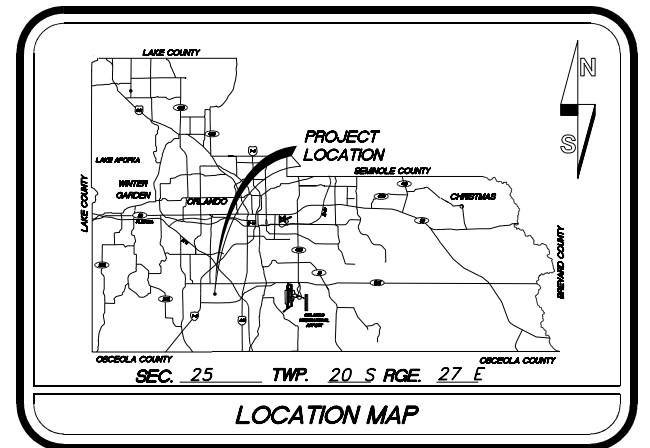
UTILITY ADJUSTMENTS  
SOUTH ACCESS ROAD

SHEET NO.  
69





# CONSTRUCTION PLANS FOR ORANGE COUNTY CONVENTION CENTER JAMES BOYD ENTRANCE IMPROVEMENTS ADDITIVE ALTERNATE 1



**FINAL PLANS  
MARCH 13, 2019  
ADDENDUM 1  
APRIL 9, 2019**

## DISTRICT NO: 6 ORANGE COUNTY, FLORIDA

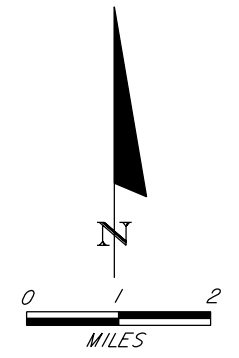
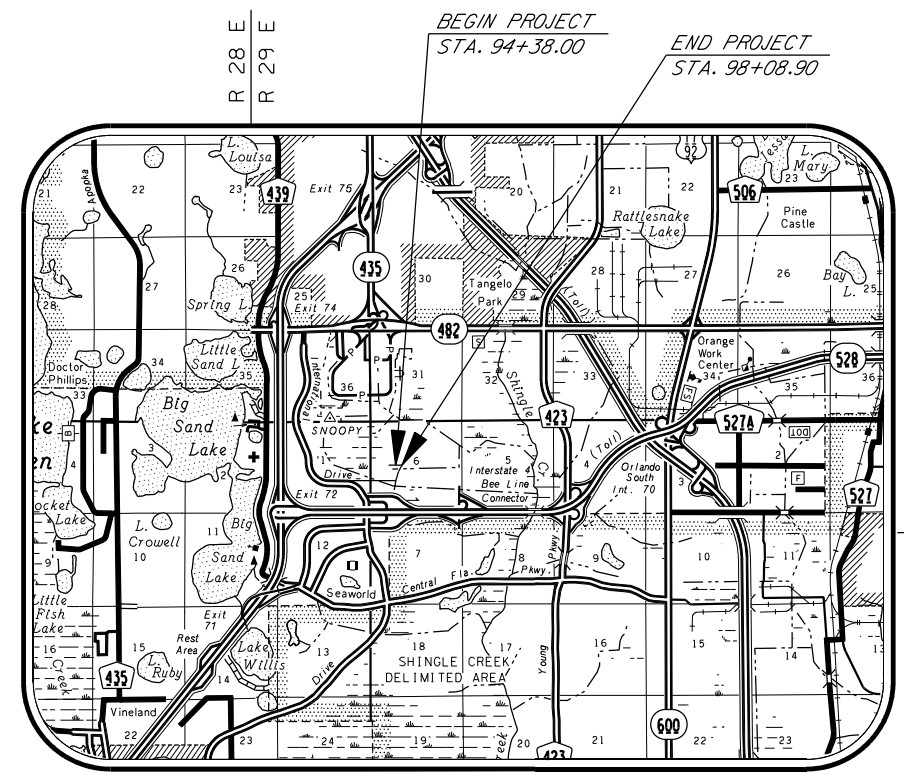
INDEX OF SHEETS

SHEET	DESCRIPTION
AA-1	COVER SHEET
AA-2	SUMMARY OF PAY ITEMS
AA-3	PAY ITEM NOTES
AA-4	GENERAL NOTES AND DETAILS
AA-5	TYPICAL SECTION
AA-6	SUMMARY OF QUANTITIES
AA-7	SUMMARY OF DRAINAGE STRUCTURES
AA-8	PLAN SHEETS
AA-9	PLAN DETAILS
AA-10	EROSION CONTROL DETAILS
AA-11	REPORT OF AUGER BORING
AA-12 TO AA-13	CROSS SECTIONS
AA-14	CONST. PHASING/TRAFFIC CONTROL PLAN
AA-15	UTILITY ADJUSTMENTS
AA-16	SIGNING AND PAVEMENT MARKING PLAN
AA-17 TO AA-17A	COMMUNICATION PLAN
AA-18 TO AA-19	SPECIAL DETAILS

SOURCE OF BENCHMARK DATUM

NOTE: ELEVATIONS SHOWN HERE ARE BASED UPON ORANGE COUNTY VERTICAL DATUM BEING (NGVD29) AS DERIVED FROM BENCHMARKS

SITE BENCHMARK  
SET NAIL AND DISK  
STAMPED "SSMC TRAV.PT."  
ELEVATION=97.38  
STA. 97+11.24 (23.07' RT.)  
CL CONST. JAMES BOYD



GOVERNING STANDARDS AND SPECIFICATIONS:  
FLORIDA DEPARTMENT OF TRANSPORTATION  
FY2018-19 STANDARD PLANS  
AND STANDARD SPECIFICATIONS FOR ROAD AND  
AND BRIDGE CONSTRUCTION, DATED JANUARY 2019  
AS AMENDED BY CONTRACT DOCUMENTS.

PROJECT LENGTH:	FEET	MILES
ROADWAY:	370.90	0.070
BRIDGES:	0.00	0.000
TOTAL LENGTH:	370.90	0.070

JERRY L. DEMINGS, COUNTY MAYOR

BOARD OF COUNTY COMMISSIONERS

BETSY VANDERLEY	DISTRICT 1
CHRISTINE MOORE	DISTRICT 2
MAYRA URIBE	DISTRICT 3
MARIBEL GOMEZ CORDERO	DISTRICT 4
EMILY BONILLA	DISTRICT 5
VICTORIA P. SIPLIN	DISTRICT 6

### NOTE

PLANS WERE PREPARED ACCORDING TO AVAILABLE INFORMATION TO ADEQUATELY ADDRESS CONDITIONS AS THEY EXISTED AT THE TIME OF PLANS PREPARATION. NEEDS, CONDITIONS AND OWNERSHIP OF PROPERTIES MAY HAVE CHANGED SINCE PROJECT DESIGN. THE COUNTY'S REPRESENTATIVE WILL ADDRESS CHANGES AND NEEDS WITH THE PROPERTY OWNER OR THEIR REPRESENTATIVES. CONTRACTOR SHALL WORK WITH THE COUNTY'S REPRESENTATIVE IN ADDRESSING AND MEETING NEEDS AND CONDITIONS THAT MAY HAVE CHANGED SINCE PLANS PREPARATION.

### CERTIFICATION TO PLANS

I HEREBY CERTIFY THAT THE DESIGN FOR THIS PROJECT AND THE ATTACHED CONSTRUCTION PLANS COMPLY WITH THE REQUIREMENTS OF SECTION 336.045 OF THE FLORIDA STATUTES AND ARE IN SUBSTANTIAL CONFORMANCE WITH THE STANDARDS CONTAINED IN THE EDITION OF THE "MANUAL OF UNIFORM MINIMUM STANDARDS FOR DESIGN, CONSTRUCTION AND MAINTENANCE FOR STREETS AND HIGHWAYS" IN EFFECT ON THIS DATE AS ADOPTED BY THE FLORIDA DEPARTMENT OF TRANSPORTATION PURSUANT TO SUBSECTION 336.045(1) OF THE FLORIDA STATUTES.

DATE: \_\_\_\_\_ ENGINEER: FURSAN S. MUNJED, P.E.  
LICENSE NO. 51446  
CERTIFICATE OF AUTHORIZATION NO. 27770

UTILITIES ENCOUNTERED

PHONE: AT&T FLORIDA	561-997-0240
SEWER: ORANGE COUNTY PUBLIC UTILITIES	407-254-9764
PHONE : ORLANDO TELEPHONE COMPANY	407-996-6297
WATER : ORLANDO UTILITIES COMMISSION	407-434-2563
POWER: ORLANDO UTILITIES COMMISSION	407-434-2563
STREET LIGHTING: ORLANDO UTILITIES COMMISSION	407-434-2563
GAS: TECO PEOPLES GAS	813-275-3783
CATV: CHARTER COMMUNICATIONS	407-532-8511

PEGASUS ENGINEERING, LLC  
301 WEST STATE ROAD 434, SUITE 309  
WINTER SPRINGS, FLORIDA 32708  
TEL. 407-992-9160  
CERTIFICATE OF AUTHORIZATION NO. 27770

REVISIONS

NO.	REVISIONS	DATE	BY
1	ADDENDUM 1 SHEET AA-17A ADDED	4/9/19	KAJ

DESIGNED BY: FM DATE: 3-13-19  
DRAWN BY: KAJ DATE: 3-13-19  
CHECKED BY: FM DATE: 3-13-19  
APPROVED BY: FM DATE: 3-13-19  
PROJECT NO: OCC-18048

SHEET AA-1  
OF AA-19

ADDENDUMS  
4/9/2019 1 REVISED PLAN SHEETS: AA-1, AA-2, AA-3, AA-8, AA-9, AA-12, AA-15, AA-16, AA-17  
ADDED PLAN SHEET: AA-17A

SUMMARY OF PAY ITEMS - ROADWAY

ITEM NO.	DESCRIPTION	UNIT	QUANTITY	
			PLAN	FINAL
102-1	MAINTENANCE OF TRAFFIC	LS	1	
104-14	PREVENTION, CONTROL AND ABATEMENT OF EROSION AND WATER POLLUTION	LS	1	
110-1-1	CLEARING AND GRUBBING (0.15 ACRES)	LS	1	
120-9	EARTHWORK (EXCAVATION, EMBANKMENT, AND GRADING)	LS	1	
160-4	TYPE B STABILIZATION (MIN LBR 40) (12")	SY	405	
285-709	BASE GROUP 09 (TYPE B-12.5) (6")	SY	309	
327-70-6	MILLING EXISTING ASPHALT PAVEMENT (1.5" AVE. DEPTH)	SY	2389	1
334-1-13A	TYPE SP STRUCTURAL COURSE (TRAFFIC LEVEL C) (1.5")	SY	2389	
334-1-13B	TYPE SP STRUCTURAL COURSE (TRAFFIC LEVEL C) (3.0")	SY	309	
430-94-1	DESILT EXISTING PIPE, 0"-24"	LF	80	
430-175-118	PIPE CULVERT (STEEL REINFORCED CONC. PIPE) (S/CD) (18" ROUND)	LF	24	
430-982-125	MITERED END SECTION (CD) (18" ROUND) (1:4)	EA	1	
519-78	BOLLARDS	EA	2	
520-2-4	CONCRETE CURB TYPE D	LF	6	
520-5-41	CONCRETE TRAFFIC SEPARATOR (TYPE IV, OPTION II) (4')	LF	92	1
550-10-220	FENCING (TYPE B) (STANDARD FEATURES)	LF	40	
550-60-912	GATE (SPECIAL) - BARRIER GATE OPERATOR W/ LED ILLUMINDATED ARM	EA	3	
570-1-2	PERFORMANCE TURF (SODDING)	SY	405	
630-2-11	CONDUIT (F&I) (OPEN TRENCH)	LF	665	1
630-2-12	CONDUIT (F&I) (UNDER PAVEMENT)	LF	180	
635-2-11	PULL & SPLICE BOXES (F&I) (13" X 24" COVER SIZE)	EA	21	
900-1	AS-BUILT PLANS	LS	1	
900-2	INDEMNIFICATION	LS	1	
900-3	GROUNDWATER TREATMENT AND DISPOSAL	ED	30	

SUMMARY OF PAY ITEMS - SIGNING AND PAVEMENT MARKINGS

ITEM NO.	DESCRIPTION	UNIT	QUANTITY	
			PLAN	FINAL
700-1-11	SINGLE POST SIGN (F&I) GROUND MOUNT (UP TO 12 S.F.)	AS	3	
700-1-60	SINGLE POST SIGN - REMOVE	AS	3	
706-3	RETRO-REFLECTIVE PAVEMENT MARKERS (BI-DIRECTIONAL WHITE/RED)	EA	5	
	RETRO-REFLECTIVE PAVEMENT MARKERS (BI-DIRECTIONAL YELLOW/YELLOW)	EA	60	
711-11-125	THERMOPLASTIC PAVEMENT MARKINGS (STANDARD) - WHITE (SOLID) (24")	LF	100	1
711-11-160	THERMOPLASTIC PAVEMENT MARKINGS (STANDARD) - WHITE (MESSAGES)	EA	6	
711-11-224	THERMOPLASTIC PAVEMENT MARKINGS (STANDARD) - YELLOW (SOLID) (18")	LF	210	
711-11-241	THERMOPLASTIC PAVEMENT MARKINGS (STANDARD) - YELLOW (2'-4' GUIDELINE) (6")	GM	0.050	
711-11-421	THERMOPLASTIC PAVEMENT MARKINGS (STANDARD) - BLUE (SOLID) (6")	LF	85	
711-16-101	THERMOPLASTIC PAVEMENT MARKINGS (STANDARD OTHER SURFACES) - WHITE (SOLID) (6")	GM	0.225	
711-16-201	THERMOPLASTIC PAVEMENT MARKINGS (STANDARD OTHER SURFACES) - YELLOW (SOLID) (6")	GM	0.165	

REVISIONS

DATE	BY	DESCRIPTION	DATE	BY	DESCRIPTION
4/9/19	KAJ	ADDENDUM 1 REVISED QUANTITIES			

ENGINEER OF RECORD:  
 FURSAN MUNJED, P.E.  
 LICENSE # 51446  
 PEGASUS ENGINEERING, LLC  
 301 WEST STATE ROAD 434, SUITE 309  
 WINTER SPRINGS, FLORIDA 32708  
 TEL. 407-992-9160  
 CERTIFICATE OF AUTHORIZATION NO. 27770



ROAD  
 TRADESHOW  
 PROJECT NO.  
 OCC-18048



SUMMARY OF PAY ITEMS  
 JAMES BOYD ENTRANCE

SHEET NO.  
 AA-2



PAY ITEM NOTES

101-1 INCLUDES THE COST OF VIDEO INSPECTION (PRIOR TO CONSTRUCTION) OF ALL EXISTING DRAINAGE PIPES (UNSUBMERGED) AND ADJACENT DRAINAGE STRUCTURES WITHIN THE PROJECT LIMITS SHOWN IN THE PLANS TO REMAIN AND TO BE CONNECTED TO BY PROPOSED DRAINAGE STRUCTURES AND PIPES.

102-1 LUMP SUM PAYMENT SHALL INCLUDE ALL TRAFFIC CONTROL COORDINATION, PERSONNEL, DEVICES, AND EQUIPMENT NECESSARY FOR MAINTENANCE OF TRAFFIC DURING ROADWAY CONSTRUCTION.  
 CONTRACTOR SHALL COORDINATE AND OBTAIN APPROVAL FROM OCCC STAFF PRIOR TO IMPLEMENTING ANY LANE CLOSURES OR DETOURS.  
 CONTRACTOR SHALL DO DUST CONTROL AND KEEP ALL ROADS AND PARKING AREAS SWEEPED AND CLEAN AND CLEAR OF DIRT. THE CONSTRUCTION SITE SHALL BE KEPT CLEAR OF DEBRIS. COST FOR CLEANING AND SWEEPING, ETC., TO BE INCIDENTAL TO PAY ITEM 102-1.

110-1-1 INCLUDES THE COST OF REMOVAL OF EXISTING FENCE AS SHOWN IN THE PLANS.  
 INCLUDES THE COST OF REMOVAL OF EXISTING CURB AS SHOWN IN THE PLANS. INCLUDES THE COST OF ADJUSTMENT OF EXISTING ABOVE-GROUND CONDUIT AS SHOWN IN THE PLANS. COORDINATE WITH OCCC STAFF FOR CONDUIT ADJUSTMENTS.  
 INCLUDES THE COST OF CAPPING EXISTING IRRIGATION PIPES.

425-175-118 INCLUDES THE COST OF CONCRETE COLLARS/JACKETS, ETC. FOR A COMPLETE INSTALLATION.

550-10-220 PROPOSED FENCE LOCATION TO BE ADJUSTED BY THE ENGINEER AS NECESSARY TO AVOID CONFLICTING WITH THE EXISTING SLIDING CANTELIVER FENCE GATE.

550-60-912 PROPOSED GATE ASSEMBLIES TO BE LIFTMASTER HIGH-PERFORMANCE COMMERCIAL DC BARRIER GATE OPERATOR TYPE MAT (MEGA ARM TOWER) WITH LED ILLUMINATED BARRIER GATE ARM BY GATEARMS.COM AS SHOWN IN THE PLANS (SEE SHEETS AA-18 TO AA-19).



COST (F&I) INCLUDES ALL MATERIALS, EQUIPMENT, HARDWARE, ETC., FOR A COMPLETE INSTALLTION. INCLUDES TYPE B LOOP, AND AFTER-HOURS ACCESS PANEL ON OUTSIDE OF GUARD SHACK AS SHOWN IN THE PLANS. GATE ASSEMBLIES TO BE APPROVED BY OCCC STAFF PRIOR TO INSTALLTION. COORDINATE WITH OCCC STAFF FOR ELECTRICAL AND COMMUNICATION CONNECTIONS, CONTROLLERS/REMOTE CONTROLS, OPTIONAL EQUIPMENT, AND OTHER OPERATIONAL SETTINGS.

570-1-2 ALL SOD SLOPES 1:3 OR GREATER SHALL BE PEGGED. ALL SODDED AREAS SHALL BE MAINTAINED BY THE CONTRACTOR UNTIL END OF CONSTRUCTION.

630-2-\*\* & 635-2-11



UNDERGROUND AND UNDERPAVEMENT CONDUITS TO BE 4" PVC SCHEDULE 80 WITH MULE TAPE PULL STRINGS INSTALLED.  
 PROPOSED ELECTRICAL CONDUCTORS AND COMMUNICATION WIRE TO BE F&I BY OTHERS. COORDINATE WITH OCCC STAFF FOR INSTALLTION AND CONNECTIONS TO GUARD SHACK AND BUILDING.  
 INCLUDES THE COST (F&I) OF ABOVE GROUND CONDUIT (RISERS) AS SHOWN IN THE PLANS. ABOVEGROUND CONDUIT TO BE 4" RIGID GALVANIZED STEEL (RGS) WITH WITH MULE TAPE PULL STRINGS INSTALLED.  
 INCLUDES THE COST (F&I) OF CONDUIT CAPS, ADAPTERS, FITTINGS, MOUNTING HARDWARE, ETC., FOR A COMPLETE INSTALLATION.

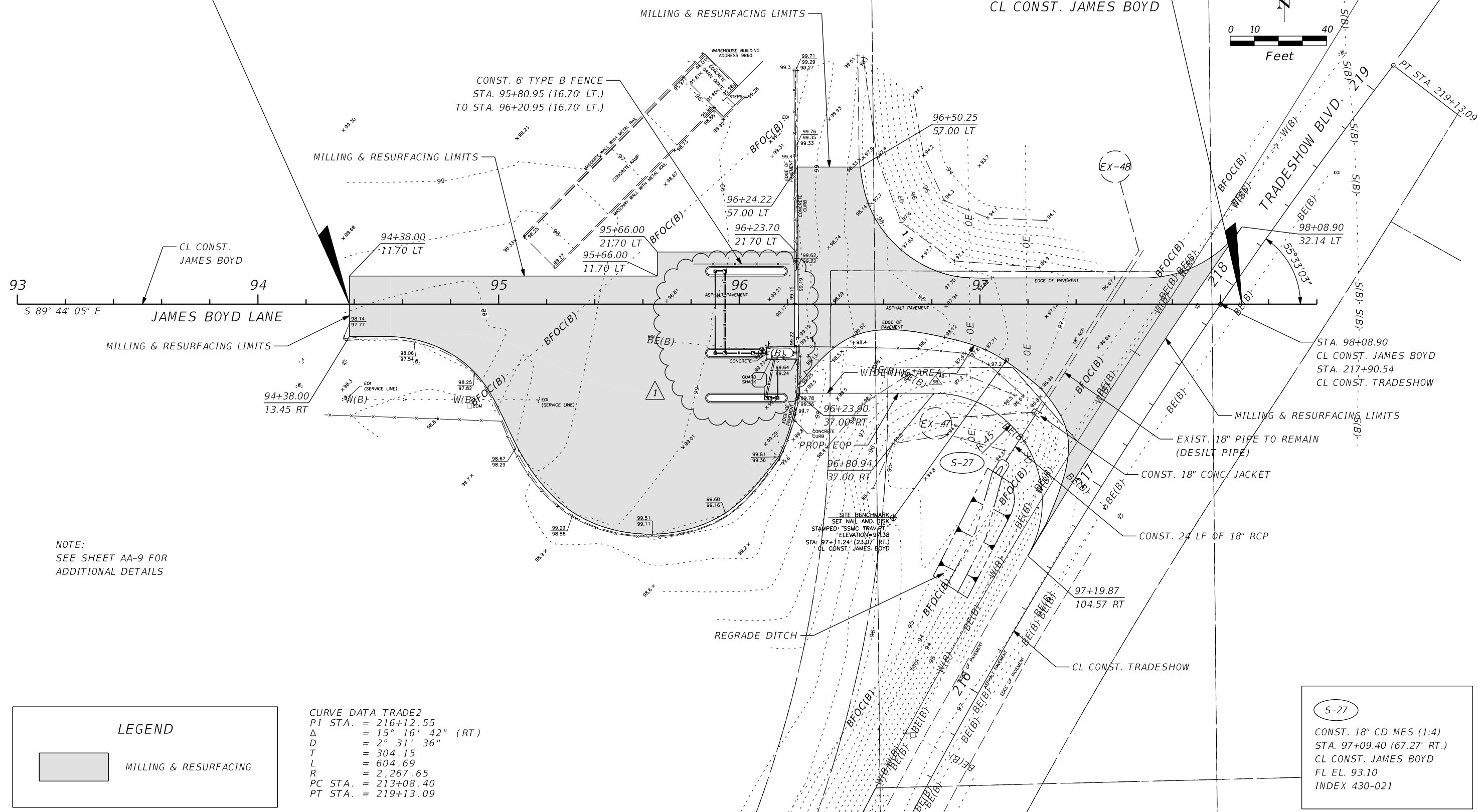
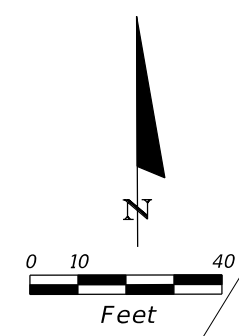
REVISIONS						ENGINEER OF RECORD: FURSAN MUNJED, P.E. LICENSE # 51446 PEGASUS ENGINEERING, LLC 301 WEST STATE ROAD 434, SUITE 309 WINTER SPRINGS, FLORIDA 32708 TEL. 407-992-9160 CERTIFICATE OF AUTHORIZATION NO. 27770		ROAD			PAY ITEM NOTES JAMES BOYD ENTRANCE	SHEET NO. AA-3
DATE	BY	DESCRIPTION	DATE	BY	DESCRIPTION			TRADESHOW	PROJECT NO.			
4/9/19	KAJ	 ADDENDUM 1 REVISED PAY ITEM NOTE						OCC-18048				

BEGIN PROJECT  
 BEGIN CONSTRUCTION  
 BEGIN MILLING & RESURFACING  
 STA. 94+38.00  
 CL CONST. JAMES BOYD

EX-47  
 18" MES  
 INV= 93.19

EX-48  
 18" MES  
 INV= 93.29

END PROJECT  
 END CONSTRUCTION  
 END MILLING & RESURFACING  
 STA. 98+08.90  
 CL CONST. JAMES BOYD



NOTE:  
 SEE SHEET AA-9 FOR  
 ADDITIONAL DETAILS

**LEGEND**

MILLING & RESURFACING

CURVE DATA TRADE2  
 PI STA. = 216+12.55  
 Δ = 15° 16' 42" (RT)  
 D = 2° 31' 36"  
 T = 304.15  
 L = 604.69  
 R = 2,267.65  
 PC STA. = 213+08.40  
 PT STA. = 219+13.09

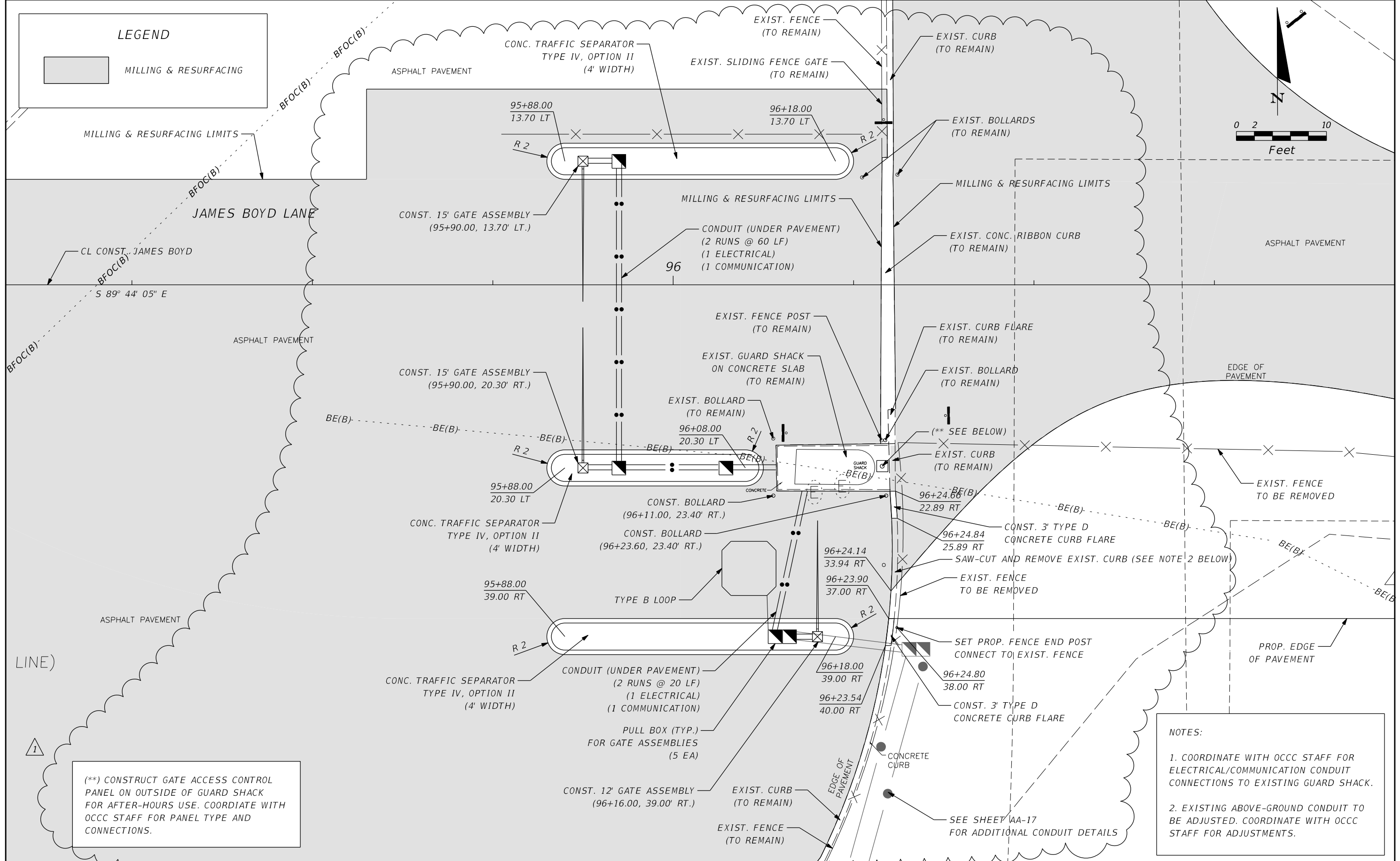
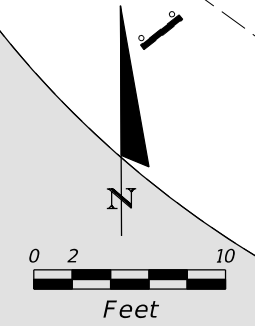
**S-27**

CONST. 18" CD MES (1:4)  
 STA. 97+09.40 (67.27' RT.)  
 CL CONST. JAMES BOYD  
 FL EL. 93.10  
 INDEX 430-021

REVISIONS						ENGINEER OF RECORD: FURSAN MUNJED, P.E. LICENSE # 51446 PEGASUS ENGINEERING, LLC 301 WEST STATE ROAD 434, SUITE 309 WINTER SPRINGS, FLORIDA 32708 TEL. 407-992-9160 CERTIFICATE OF AUTHORIZATION NO. 27770	ROAD TRADESHOW PROJECT NO. OCC-18048	 PLAN SHEET JAMES BOYD ENTRANCE	SHEET NO. AA-8
DATE	BY	DESCRIPTION	DATE	BY	DESCRIPTION				
4/9/19	KAJ	ADDENDUM 1 REVISED DESIGN							

**LEGEND**

 MILLING & RESURFACING



(\*\*) CONSTRUCT GATE ACCESS CONTROL PANEL ON OUTSIDE OF GUARD SHACK FOR AFTER-HOURS USE. COORDIATE WITH OCCC STAFF FOR PANEL TYPE AND CONNECTIONS.

**NOTES:**

1. COORDINATE WITH OCCC STAFF FOR ELECTRICAL/COMMUNICATION CONDUIT CONNECTIONS TO EXISTING GUARD SHACK.
2. EXISTING ABOVE-GROUND CONDUIT TO BE ADJUSTED. COORDINATE WITH OCCC STAFF FOR ADJUSTMENTS.

DATE		BY		DESCRIPTION	DATE		BY		DESCRIPTION
4/9/19		KAJ		ADDENDUM 1 REVISED DESIGN					

ENGINEER OF RECORD:  
 FURSAN MUNJED, P.E.  
 LICENSE # 51446  
 PEGASUS ENGINEERING, LLC  
 301 WEST STATE ROAD 434, SUITE 309  
 WINTER SPRINGS, FLORIDA 32708  
 TEL. 407-992-9160  
 CERTIFICATE OF AUTHORIZATION NO. 27770

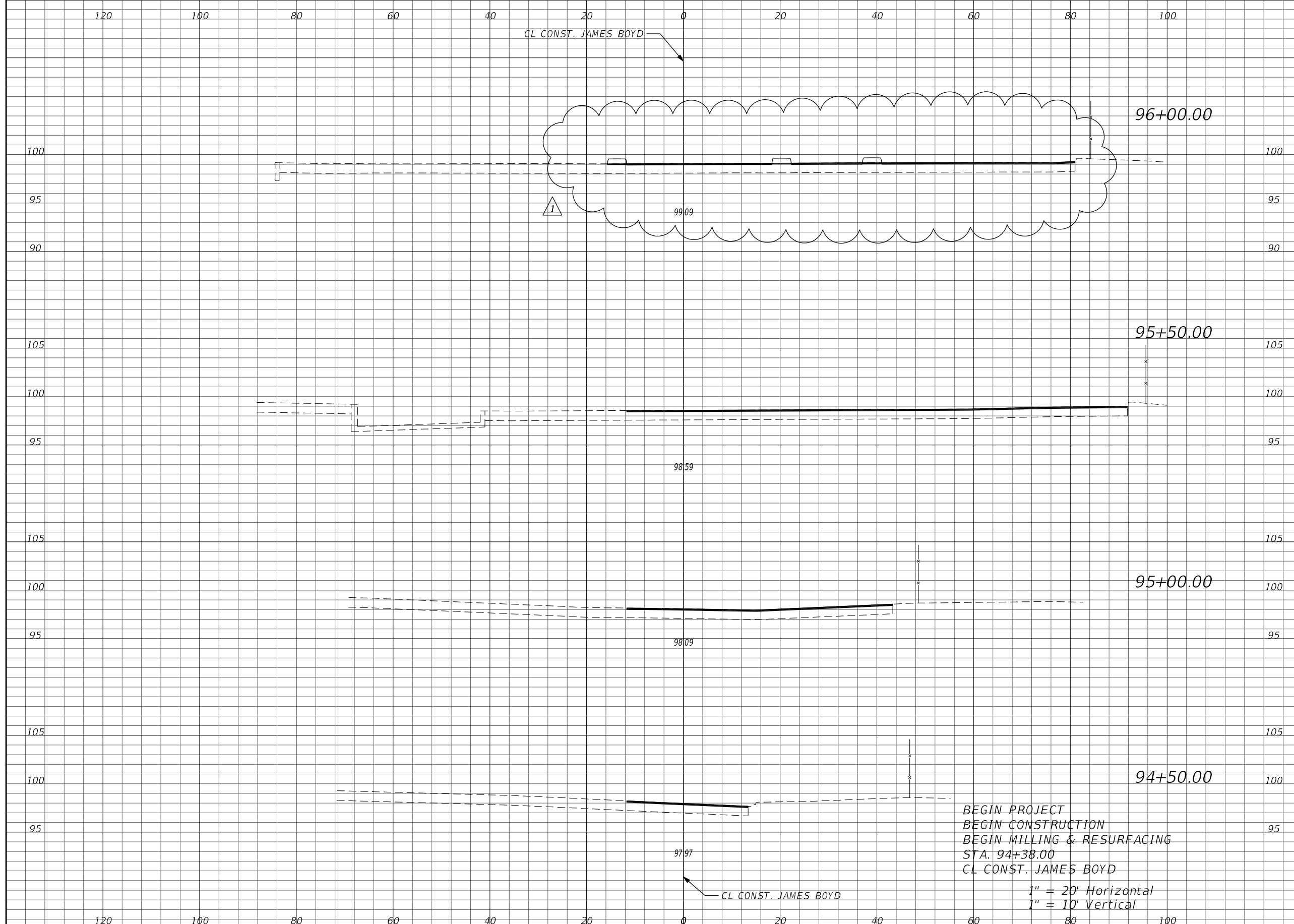


ROAD	TRADESHOW
	PROJECT NO.
	OCC-18048



PLAN DETAILS  
 JAMES BOYD ENTRANCE

SHEET NO.  
 AA-9



Regular Exc.		Embank.	
A	V	A	V
0	0	0	0
0	0	0	0
0	0	0	0
0	0	0	0
0	0	0	0
0	0	0	0
0	0	0	0
0	0	0	0

REVISIONS			
DATE	BY	DESCRIPTION	
4/9/19	KAJ	ADDENDUM 1 REVISED CROSS SECTION	

ENGINEER OF RECORD:  
 FURSAN MUNJED, P.E.  
 LICENSE # 51446  
 PEGASUS ENGINEERING, LLC  
 301 WEST STATE ROAD 434, SUITE 309  
 WINTER SPRINGS, FLORIDA 32708  
 TEL. 407-992-9160  
 CERTIFICATE OF AUTHORIZATION NO. 27770



ROAD  
 TRADESHOW  
 PROJECT NO.  
 OCC-18048

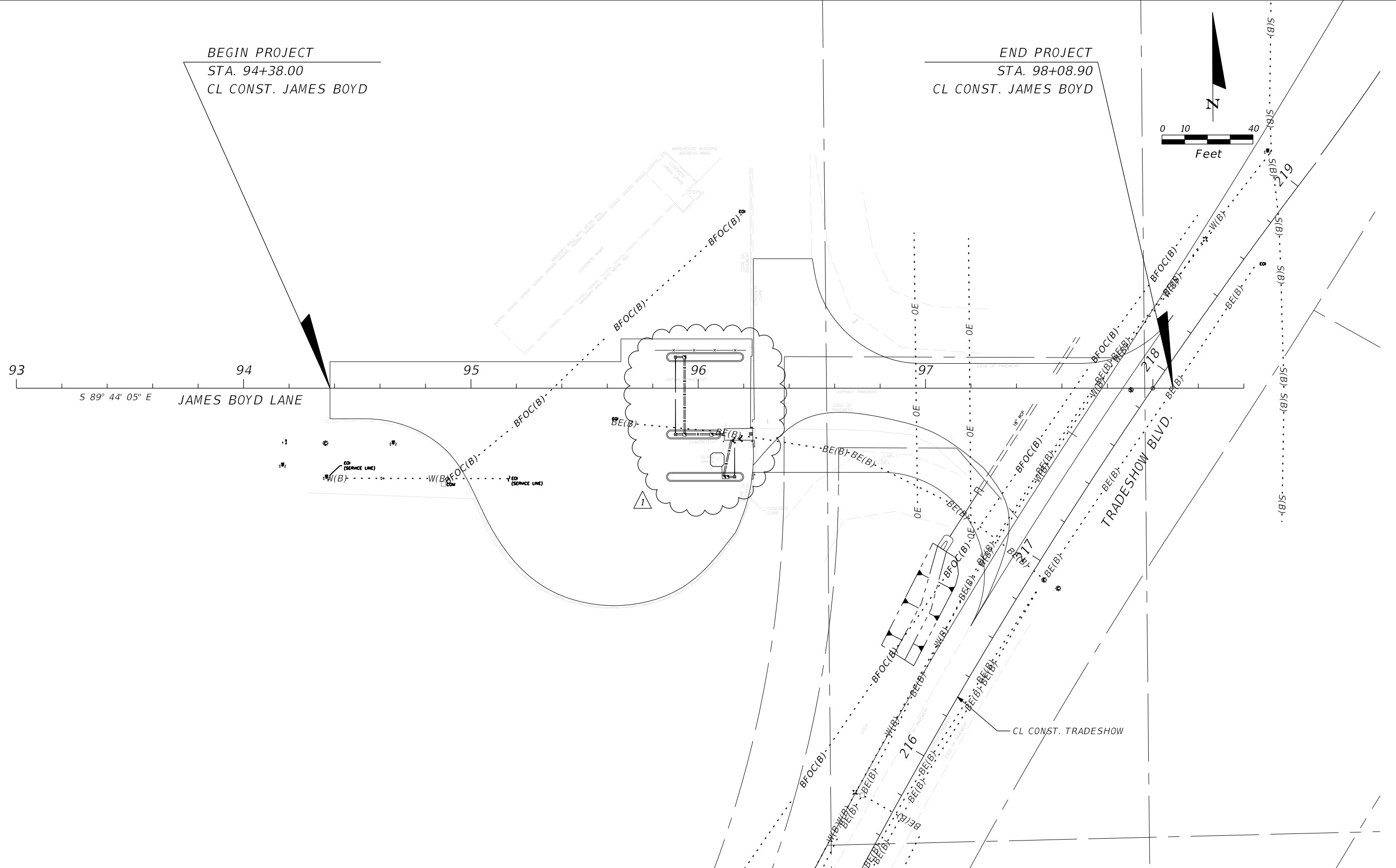
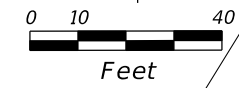


CROSS SECTIONS  
 JAMES BOYD ENTRANCE

SHEET NO.  
 AA-12

BEGIN PROJECT  
 STA. 94+38.00  
 CL CONST. JAMES BOYD

END PROJECT  
 STA. 98+08.90  
 CL CONST. JAMES BOYD



REVISIONS					
DATE	BY	DESCRIPTION	DATE	BY	DESCRIPTION
4/9/19	KAJ	ADDENDUM 1 REVISED DESIGN			

ENGINEER OF RECORD:  
 FURSAN MUNJED, P.E.  
 LICENSE # 51446  
 PEGASUS ENGINEERING, LLC  
 301 WEST STATE ROAD 434, SUITE 309  
 WINTER SPRINGS, FLORIDA 32708  
 TEL. 407-992-9160  
 CERTIFICATE OF AUTHORIZATION NO. 27770



ROAD  
 TRADESHOW  
 PROJECT NO.  
 OCC-18048

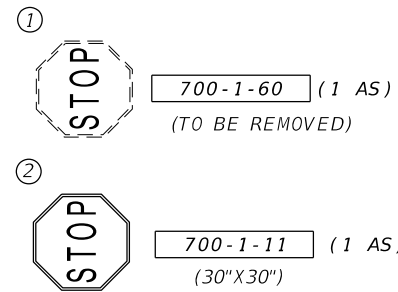
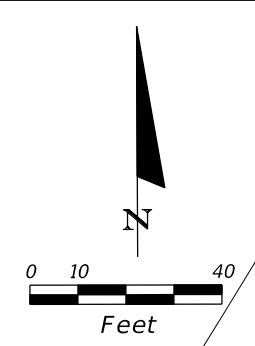


UTILITY ADJUSTMENTS  
 JAMES BOYD ENTRANCE

SHEET NO.  
 AA-15

BEGIN SIGNING AND  
PAVEMENT MARKINGS  
STA. 94+38.00  
CL CONST. JAMES BOYD

END SIGNING AND  
PAVEMENT MARKINGS  
STA. 98+08.90  
CL CONST. JAMES BOYD



93

JAMES BOYD LANE

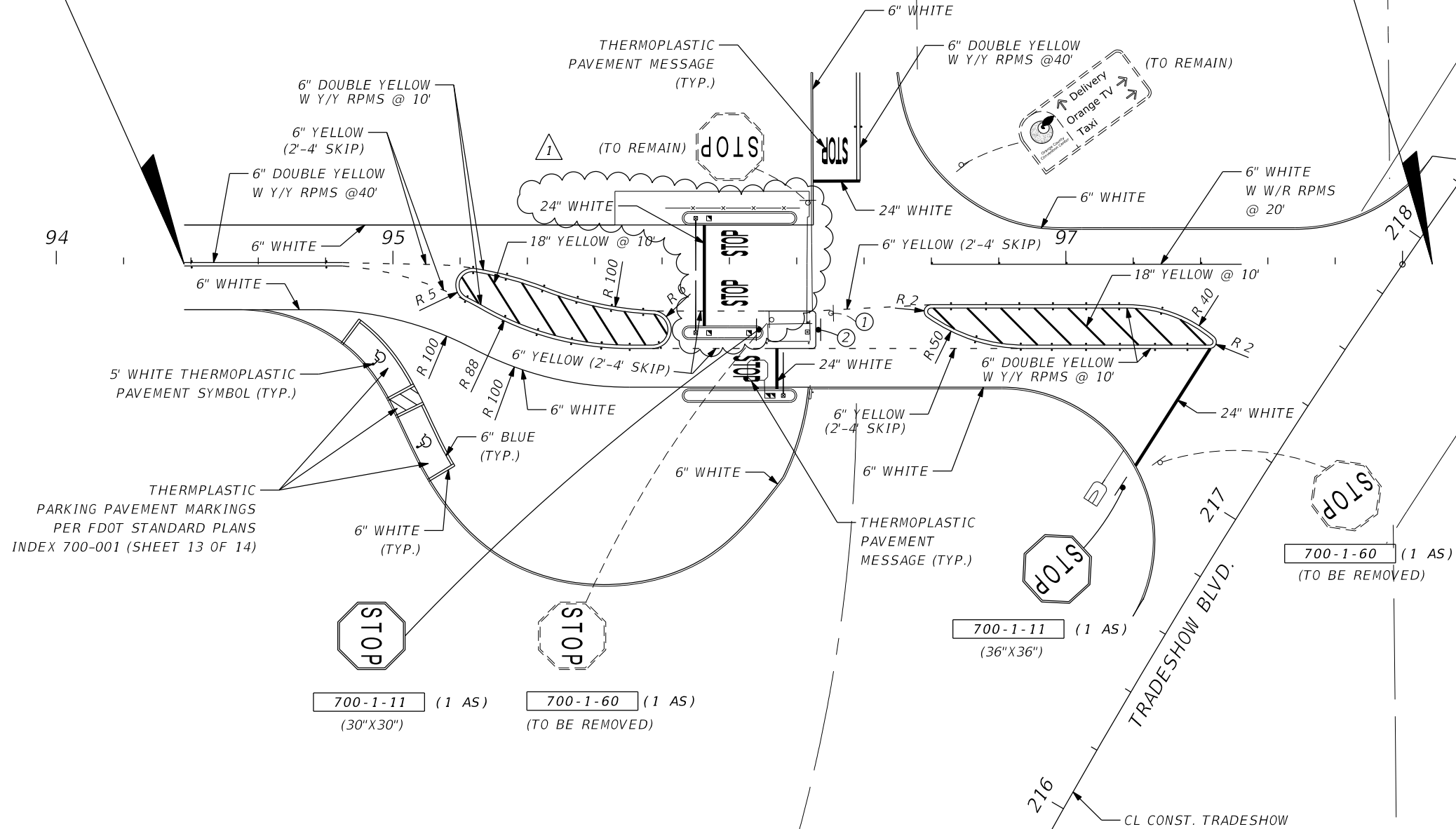
94

95

97

218

98+08.90  
32.14 LT



700-1-11 (1 AS)  
(30\"/>

700-1-60 (1 AS)  
(TO BE REMOVED)

700-1-11 (1 AS)  
(36\"/>

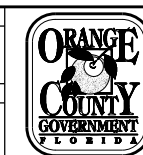
700-1-60 (1 AS)  
(TO BE REMOVED)

REVISIONS					
DATE	BY	DESCRIPTION	DATE	BY	DESCRIPTION
4/9/19	KAJ	ADDENDUM 1 REVISED DESIGN			

ENGINEER OF RECORD:  
FURSAN MUNJED, P.E.  
LICENSE # 51446  
PEGASUS ENGINEERING, LLC  
301 WEST STATE ROAD 434, SUITE 309  
WINTER SPRINGS, FLORIDA 32708  
TEL. 407-992-9160  
CERTIFICATE OF AUTHORIZATION NO. 27770

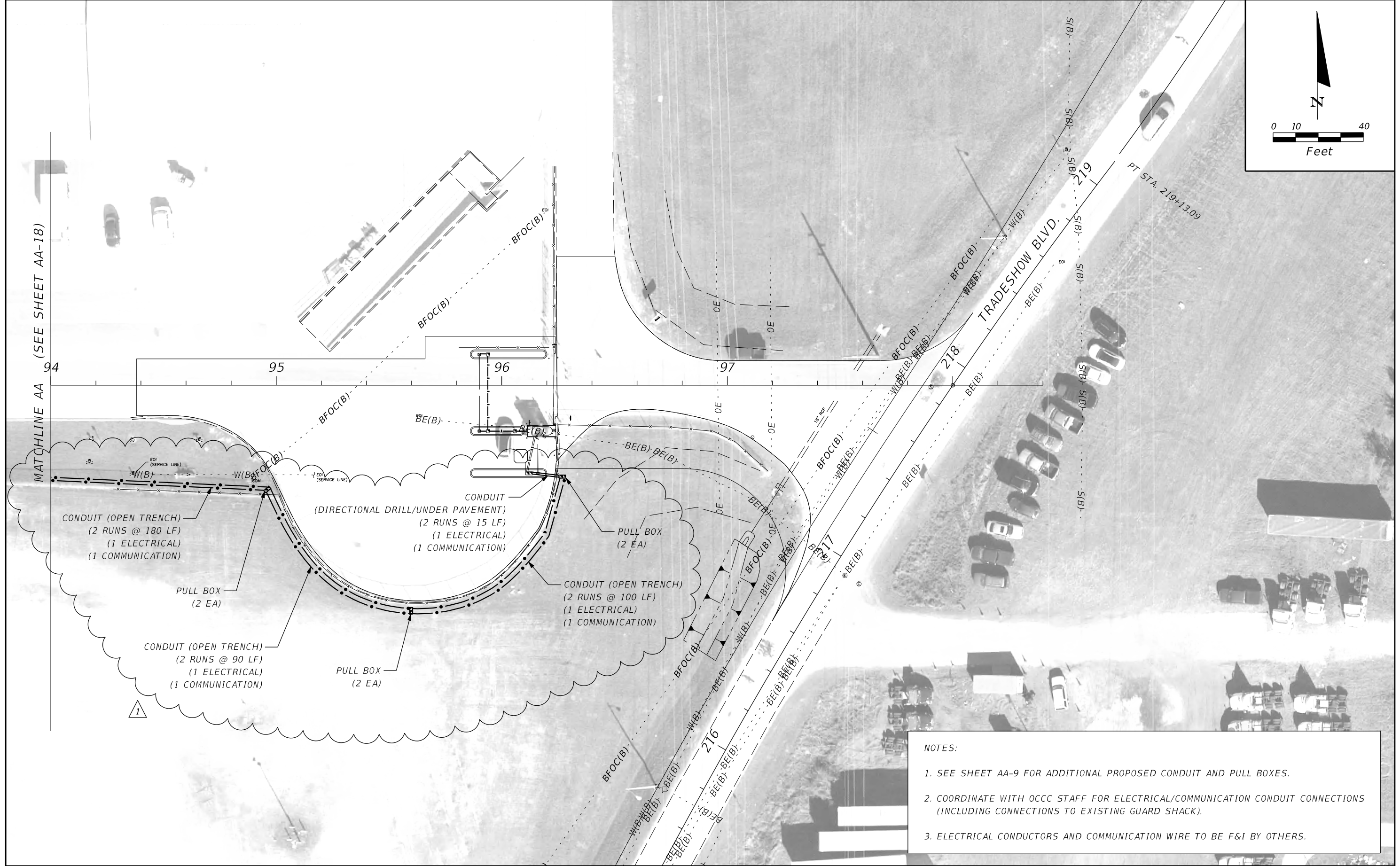
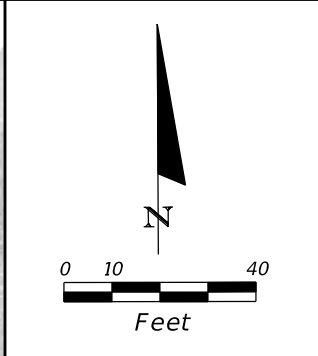


ROAD  
TRADESHOW  
PROJECT NO.  
OCC-18048



SIGNING AND PAVEMENT  
MARKING PLAN  
JAMES BOYD ENTRANCE

SHEET  
NO.  
AA-16



- NOTES:
1. SEE SHEET AA-9 FOR ADDITIONAL PROPOSED CONDUIT AND PULL BOXES.
  2. COORDINATE WITH OCC STAFF FOR ELECTRICAL/COMMUNICATION CONDUIT CONNECTIONS (INCLUDING CONNECTIONS TO EXISTING GUARD SHACK).
  3. ELECTRICAL CONDUCTORS AND COMMUNICATION WIRE TO BE F&I BY OTHERS.

REVISIONS					
DATE	BY	DESCRIPTION	DATE	BY	DESCRIPTION
4/9/19	KAJ	ADDENDUM 1 REVISED DESIGN			

ENGINEER OF RECORD:  
 FURSAN MUNJED, P.E.  
 LICENSE # 51446  
 PEGASUS ENGINEERING, LLC  
 301 WEST STATE ROAD 434, SUITE 309  
 WINTER SPRINGS, FLORIDA 32708  
 TEL. 407-992-9160  
 CERTIFICATE OF AUTHORIZATION NO. 27770



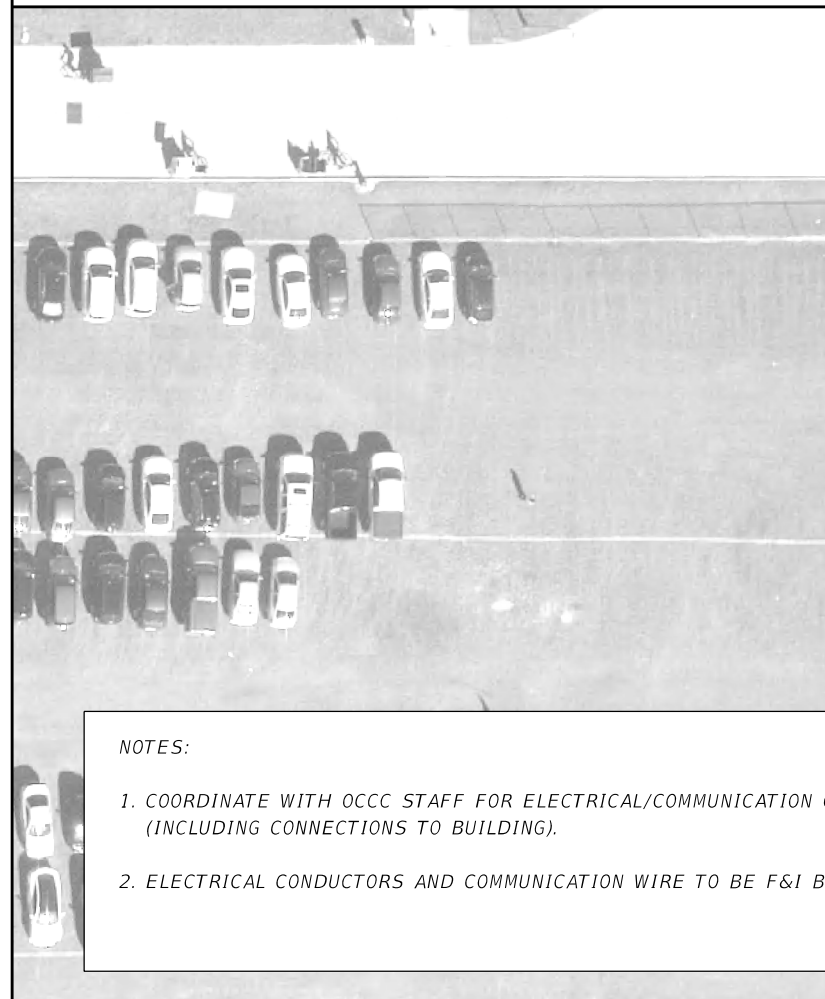
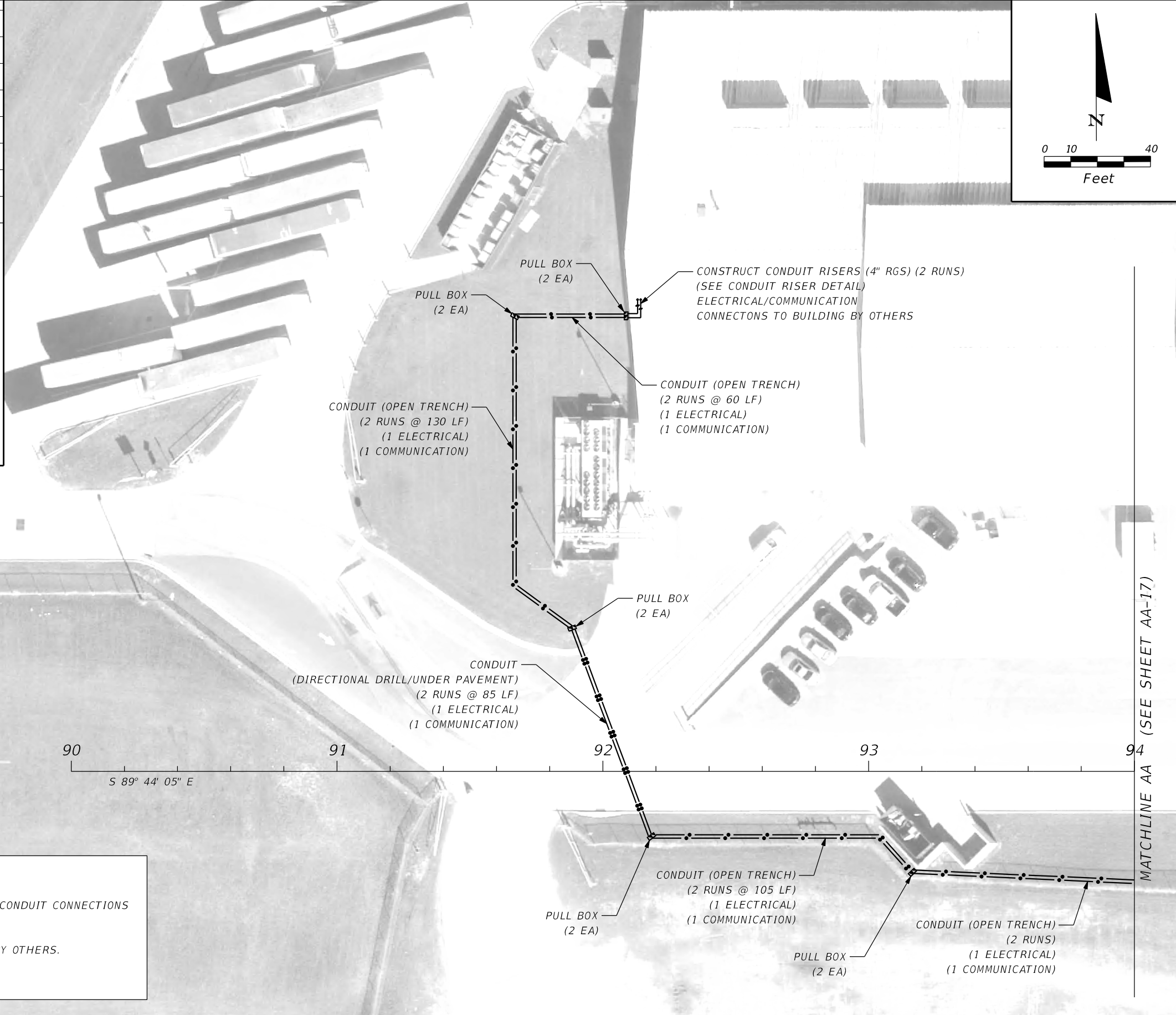
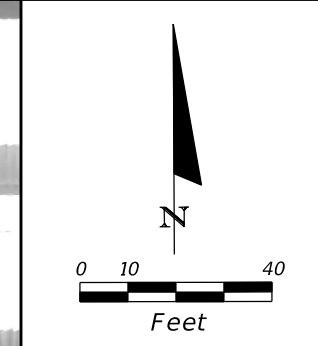
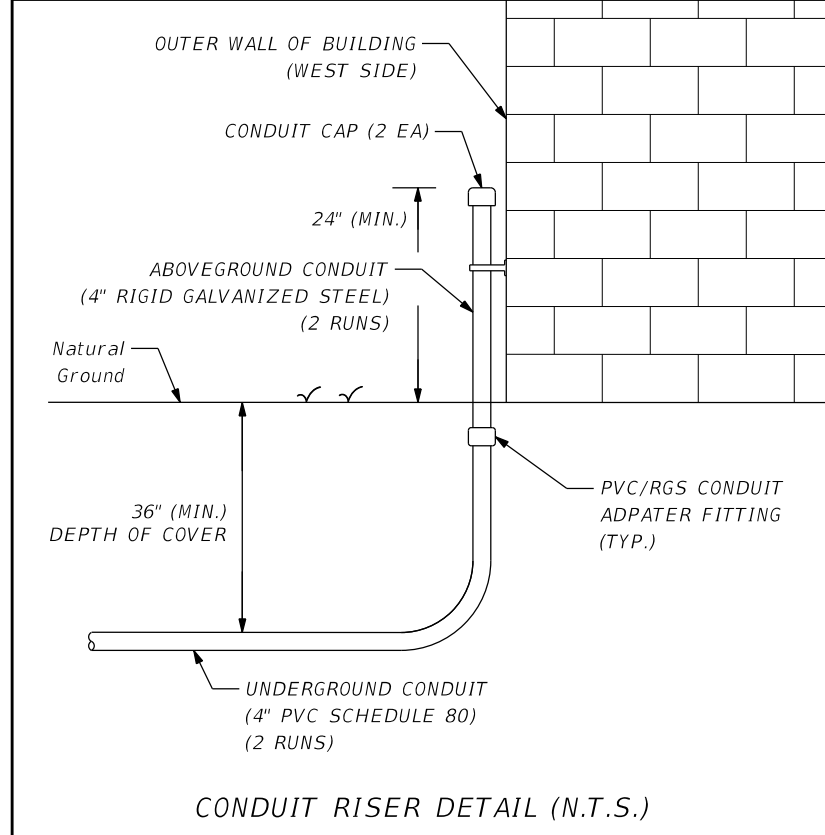
ROAD	TRADESHOW
PROJECT NO.	OCC-18048



COMMUNICATION PLAN  
 JAMES BOYD ENTRANCE

SHEET NO.  
 AA-17





NOTES:

- COORDINATE WITH OCC STAFF FOR ELECTRICAL/COMMUNICATION CONDUIT CONNECTIONS (INCLUDING CONNECTIONS TO BUILDING).
- ELECTRICAL CONDUCTORS AND COMMUNICATION WIRE TO BE F&I BY OTHERS.

REVISIONS						ENGINEER OF RECORD: FURSAN MUNJED, P.E. LICENSE # 51446 PEGASUS ENGINEERING, LLC 301 WEST STATE ROAD 434, SUITE 309 WINTER SPRINGS, FLORIDA 32708 TEL. 407-992-9160 CERTIFICATE OF AUTHORIZATION NO. 27770		ROAD			COMMUNICATION PLAN JAMES BOYD ENTRANCE	SHEET NO. AA-17A
DATE	BY	DESCRIPTION	DATE	BY	DESCRIPTION			TRADESHOW	PROJECT NO.			
4/9/19	KAJ	ADDENDUM 1 REVISED DESIGN/SHEET ADDED						OCC-18048				

MATCHLINE AA (SEE SHEET AA-17)





**QUANTITY COMPUTATIONS FOR  
ORANGE COUNTY CONVENTION CENTER  
CAMPUS SOUTH ACCESS / TRADESHOW BOULEVARD IMPROVEMENTS,  
AND JAMES BOYD ENTRANCE IMPROVEMENTS (ADDITIVE ALTERNATE 1)**

**DISTRICT NO: 6  
ORANGE COUNTY, FLORIDA**

**FINAL PLANS  
MARCH 13, 2019  
ADDENDUM 1  
APRIL 9, 2019**

**Pegasus  
ENGINEERING**  
PEGASUS ENGINEERING, LLC  
301 WEST STATE ROAD 434, SUITE 309  
WINTER SPRINGS, FLORIDA 32708  
TEL. 407-992-9160  
CERTIFICATE OF AUTHORIZATION NO. 27770

REVISIONS	DATE	BY
ADDENDUM 1	4/9/19	KAJ

**SHEET SQ-1**

ADDENDUMS

4/9/2019 REVISED COMPUTATION BOOK SHEETS: SQ-1, SQ-14, SQ-15

**SUMMARY OF LUMP SUM ITEMS**

PAY ITEM NO.	PAY ITEM DESCRIPTION	QUANTITY		DESIGN NOTES	CONSTRUCTION REMARKS
		P	F		
102-1	MAINTENANCE OF TRAFFIC	1			
104-14	PREVENTION, CONTROL AND ABATEMENT OF EROSION AND WATER POLLUTION	1			
110-1-1	CLEARING AND GRUBBING	1		(0.15 ACRES)	
120-9	EARTHWORK (EXCAVATION, EMBANKMENT, AND GRADING)	1			

**SUMMARY OF PAVEMENT**

PAY ITEM NO.	PAY ITEM DESCRIPTION	LOCATION		SIDE	AREA ID	LENGTH	WIDTH	UNIT	QUANTITY		TOTAL		DESIGN NOTES	CONSTRUCTION REMARKS
		STA. TO STA.	DESCRIPTION						P	F	P	F		
160-4	TYPE B STABILIZATION (MINIMUM LBR 40) (12")	96+23.90 to 97+19.86	WIDENING	RT.	61247	95.96		SY	308.2		405.0			
		96+23.05 to 97+19.86	SHOULDER	RT.	61036	96.81	6.00			96.8				
285-709	BASE GROUP 09 (TYPE B-12.5) (6")	96+23.90 to 97+19.86	WIDENING	RT.	61247	95.96		SY	308.2		309.0			
327-70-6	MILL EXISTING ASPHALT PAVEMENT (1.5" AVE. DEPTH)	94+38.00 to 96+24.15	M&R AREA	RT/LT	59216	186.15		SY	1465.1		2389.0	1		
		96+24.15 to 97+19.86	M&R AREA	RT/LT	58617	95.71			874.2					
		95+66.00 to 96+23.70	M&R AREA	LT.	59093	57.70			49.3					
334-1-13A	TYPE SP STRUCTURAL COURSE (TRAFFIC LEVEL C) (1.5")	94+38.00 to 96+24.15	M&R AREA	RT/LT	59216	186.15		SY	1465.1		2389.0	1		
		96+24.15 to 97+19.86	M&R AREA	RT/LT	58617	95.71			874.2					
		95+66.00 to 96+23.70	M&R AREA	LT.	59093	57.70			49.3					
334-1-13B	TYPE SP STRUCTURAL COURSE (TRAFFIC LEVEL C) (3.0")	96+23.90 to 97+19.86	WIDENING	RT.	61247	95.96		SY	308.20		309.0			

**SUMMARY OF CURB & GUTTER AND TRAFFIC SEPARATORS**

PAY ITEM NO.	PAY ITEM DESCRIPTION	LOCATION	SIDE	AREA ID	UNIT	QUANTITY				TOTAL		DESIGN NOTES	CONSTRUCTION REMARKS	
						STA. TO STA.	GROSS LENGTH	DEDUCTIONS		NET LENGTH				P
		TYPE						LENGTH	P	F				
520-2-4	CONCRETE CURB TYPE D	96+24.66 to 96+24.84	RT.		LF	3.0			3.0		6		CURB FLARE	
		96+23.90 to 96+23.54	RT.			3.0			3.0				CURB FLARE	
520-5-41	CONCRETE TRAFFIC SEPARATOR (TYPE IV, OPTION II) (4')	95+88.00 to 96+18.00	LT.		LF	34.0			34.0		92	1		
		95+88.00 to 96+08.00	RT.			24.0			24.0					
		95+88.00 to 96+18.00	RT.			34.0			34.0					

**REVISIONS**

DATE	BY	DESCRIPTION	DATE	BY	DESCRIPTION
4/9/19	KAJ	1 ADDENDUM 1 REVISED QUANTITIES			

ENGINEER OF RECORD:  
 FURSAN MUNJED, P.E.  
 LICENSE # 51446  
 PEGASUS ENGINEERING, LLC  
 301 WEST STATE ROAD 434, SUITE 309  
 WINTER SPRINGS, FLORIDA 32708  
 TEL. 407-992-9160  
 CERTIFICATE OF AUTHORIZATION NO. 27770



ROAD  
 TRADESHOW  
 PROJECT NO.  
 OCC-18048



QUANTITY COMPUTATIONS  
 JAMES BOYD ENTRANCE

SHEET NO.  
 SQ-14

**SUMMARY OF FENCING AND GATES**

PAY ITEM NO.	DESCRIPTION	LOCATION		SIDE	UNIT	QUANTITY		TOTAL		DESIGN NOTES	CONSTRUCTION REMARKS
		STA. TO STA.				P	F	P	F		
		550-10-220	FENCE (TYPE B) (STANDARD FEATURES)			95+80.95 to 96+20.95		LT.	LF		
550-60-912	GATE (SPECIAL)	95+90.00		LT.	EA	1		3	<div style="border: 1px solid black; border-radius: 50%; padding: 5px; display: inline-block;">                     15' WIDTH                      15' WIDTH                      12' WIDTH                 </div>		
	BARRIER GATE OPERATOR	95+90.00		RT.		1					
	WITH LED ILLUMINATED ARM	96+16.00		RT.		1					

**SUMMARY OF PERFORMANCE TURF**

LOCATION STA. TO STA.	SIDE	AREA ID	LENGTH	WIDTH	PERFORMANCE TURF (SOD)		DESIGN NOTES	CONSTRUCTION REMARKS
					570-1-2			
					P	F		
96+23.05 to 97+19.86	RT.	61036			96.8		SHLDR.	
96+07.52 to 97+14.68	RT.	65038			215.2		TIE-BACK SLOPES	
96+80.63 to 96+94.80	RT.	65301			93.0		DITCH REGRADING	
<b>TOTAL:</b>					405			

**SUMMARY OF GENERAL ITEMS**

PAY ITEM NO.	PAY ITEM DESCRIPTION	LOCATION		SIDE	UNIT	QUANTITY		TOTAL		DESIGN NOTES	CONSTRUCTION REMARKS
		STA. TO STA.				P	F	P	F		
		430-94-1	DESILT EXISTING PIPE (0"-24")			97+50.00		RT/LT	LF		
519-78	BOLLARDS	96+11.00		RT.	EA	1		2			
		96+23.60		RT.		1					
630-2-11	CONDUIT (F&I) (OPEN TRENCH)	COMMUNICATION PLAN		RT.	LF	665.0		665			
630-2-12	CONDUIT (F&I) (DIRECTIONAL DRILL/UNDER PAVEMENT)	GATE ASSEMBLIES		RT/LT	LF	80.0		180			(4" PVC SCHEDULE 80)
		COMMUNICATION PLAN		RT/LT		100.0					(4" PVC SCHEDULE 80)
635-2-11	PULL & SPLICE BOXES (F&I) (13" X 24" COVER SIZE)	GATE ASSEMBLIES		RT/LT	EA	5		21			
		COMMUNICATION PLAN		RT/LT		16					
900-1	AS-BUILT PLANS				LS	1		1			
900-2	INDEMNIFICATION				LS	1		1			
900-3	GROUNDWATER TREATMENT AND DISPOSAL				ED	30		30			

**REVISIONS**

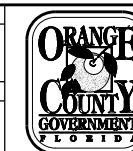
DATE	BY	DESCRIPTION	DATE	BY	DESCRIPTION
4/9/19	KAJ	ADDENDUM 1 REVISED QUANTITIES			

ENGINEER OF RECORD:  
 FURSAN MUNJED, P.E.  
 LICENSE # 51446  
 PEGASUS ENGINEERING, LLC  
 301 WEST STATE ROAD 434, SUITE 309  
 WINTER SPRINGS, FLORIDA 32708  
 TEL. 407-992-9160  
 CERTIFICATE OF AUTHORIZATION NO. 27770



**ROAD**

TRADESHOW  
 PROJECT NO.  
 OCC-18048



QUANTITY COMPUTATIONS  
 JAMES BOYD ENTRANCE

SHEET NO.

SQ-15