

August 10, 2017
BOARD OF COUNTY COMMISSIONERS
ORANGE COUNTY, FLORIDA
ADDENDUM NO. 1 / IFB Y17-781 IFB

**PUMP STATIONS 3116 MARTIN CO, 3117 MILLAY DRIVE AND 3216 PADGET
CIRCLE IMPROVEMENTS PACKAGE**

REVISED BID OPENING DATE: August 15 17, 2017

This Addendum is hereby incorporated into the bid documents of the project referenced above. The following items are clarifications, corrections, additions, deletions and/or revisions to and shall take precedence over the original documents. Additions are indicated by underlining, deletions are indicated by ~~strikethrough~~.

A. The bid opening date is changed to August 17, 2017.

B. CLARIFICATIONS

1. Q: Please confirm that an asphalt patch will be accepted by the Owner at PS 3216. It's likely this patch will need to carry from the manhole over to the curb closest to the pump station for by-pass pumping operation.

A: It is acceptable to increase the asphalt removal and replacement patch in the street around MH 32160009 to the curb in front of the Pump Station to allow for the by-pass pumping operation. Please refer to the re-issued Drawing Sheet C-301 attached to this Addendum.

2. Q: Please confirm that existing SCADA panels are to be reused/relocated by the Contractor at all three (3) pump stations. There are conflicting notes in various places of the documents as to if these panels are to be relocated or replaced.

A: Yes, the existing SCADA panels at all three (3) pump stations are to be reused/ relocated by the Contractor. The conflicting call outs have been corrected. Please refer to re-issued Drawing Sheets C-100 and C-101 attached to this Addendum.

3. Q: Please confirm the top slab elevation of PS 3216. Drawing Sheet C-301 indicates an elevation of 99.65 and the design table on Drawing Sheet P-300 indicates something different in one place.

A: The constructed top slab elevation of PS 3216 should be 96.65. The conflicting call outs have been corrected. Please refer to re-issued Drawing Sheets C-301 and P-300 attached to this Addendum.

B. PROJECT DRAWINGS

SHEET C-100

Delete: Delete ~~SHEET C-100~~ in its entirety.

Add: Add in its place the SHEET C-100, attached and labelled this Addendum.

SHEET C-101

Delete: Delete ~~SHEET C-101~~ in its entirety.

Add: Add in its place the SHEET C-101, attached and labelled this Addendum.

SHEET C-301

Delete: Delete ~~SHEET C-301~~ in its entirety.

Add: Add in its place the SHEET C-301, attached and labelled this Addendum.

SHEET P-300

Delete: Delete ~~SHEET P-300~~ in its entirety.

Add: Add in its place the SHEET P-300, attached and labelled this Addendum.

C. ACKNOWLEDGEMENT OF ADDENDA

- a. The Proposer shall acknowledge receipt of this addendum by completing the applicable section in the solicitation or by completion of the acknowledgement information on the addendum. Either form of acknowledgement must be completed and returned not later than the date and time for receipt of proposal.
- b. All other terms, conditions and specifications remain the same.
- c. Receipt acknowledged by:

Authorized Signature

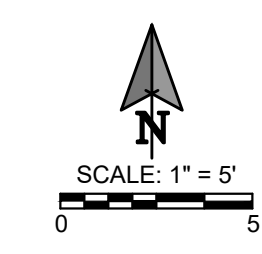
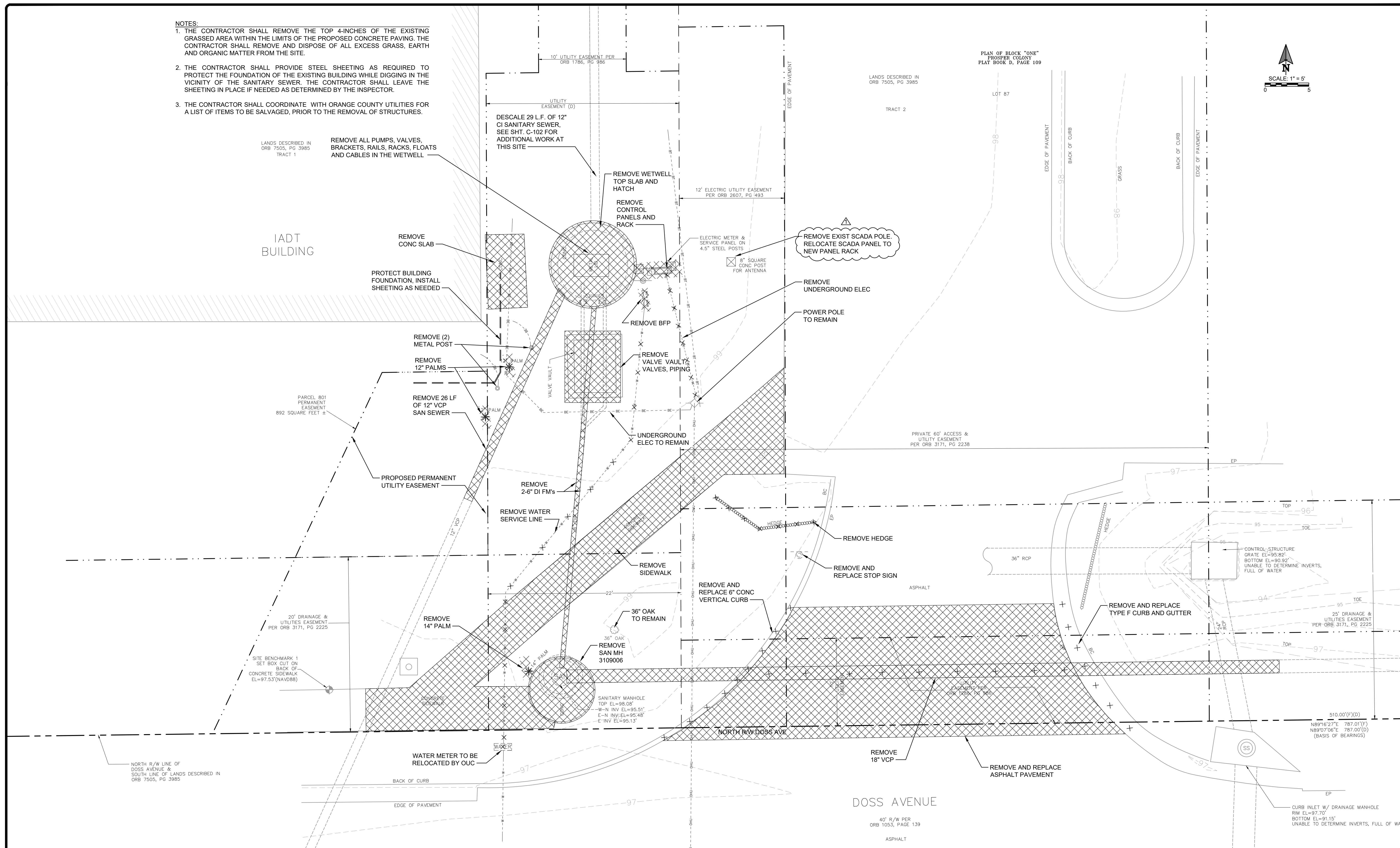
Date Signed

Title

Name of Firm

NOTES:

1. THE CONTRACTOR SHALL REMOVE THE TOP 4-INCHES OF THE EXISTING GRASSED AREA WITHIN THE LIMITS OF THE PROPOSED CONCRETE PAVING. THE CONTRACTOR SHALL REMOVE AND DISPOSE OF ALL EXCESS GRASS, EARTH AND ORGANIC MATTER FROM THE SITE.
2. THE CONTRACTOR SHALL PROVIDE STEEL SHEETING AS REQUIRED TO PROTECT THE FOUNDATION OF THE EXISTING BUILDING WHILE DIGGING IN THE VICINITY OF THE SANITARY SEWER. THE CONTRACTOR SHALL LEAVE THE SHEETING IN PLACE IF NEEDED AS DETERMINED BY THE INSPECTOR.
3. THE CONTRACTOR SHALL COORDINATE WITH ORANGE COUNTY UTILITIES FOR A LIST OF ITEMS TO BE SALVAGED, PRIOR TO THE REMOVAL OF STRUCTURES.



No.	REVISIONS	BY	DATE
1	ADDENDUM No 1	GJH	8/6/17
2			
3			
4			
5	BID SET	GJH	5/24/2017

LINE IS 2 INCHES
AT FULL SIZE
(IF NOT SCALE ACCORDINGLY)

SCALE: AS NOTED

ORANGE COUNTY
GOVERNMENT
FLORIDA

ORANGE COUNTY UTILITIES
9150 CURRY FORD ROAD
ORLANDO, FLORIDA 32825

BFA Environmental Consultants
Barnes, Ferland and Associates, Inc.
1230 E. Hillcrest Street, Orlando, FL, 32803
PH: (407) 896-8638 FAX: (407) 896-1822
ENGINEERING BUSINESS No. 6899

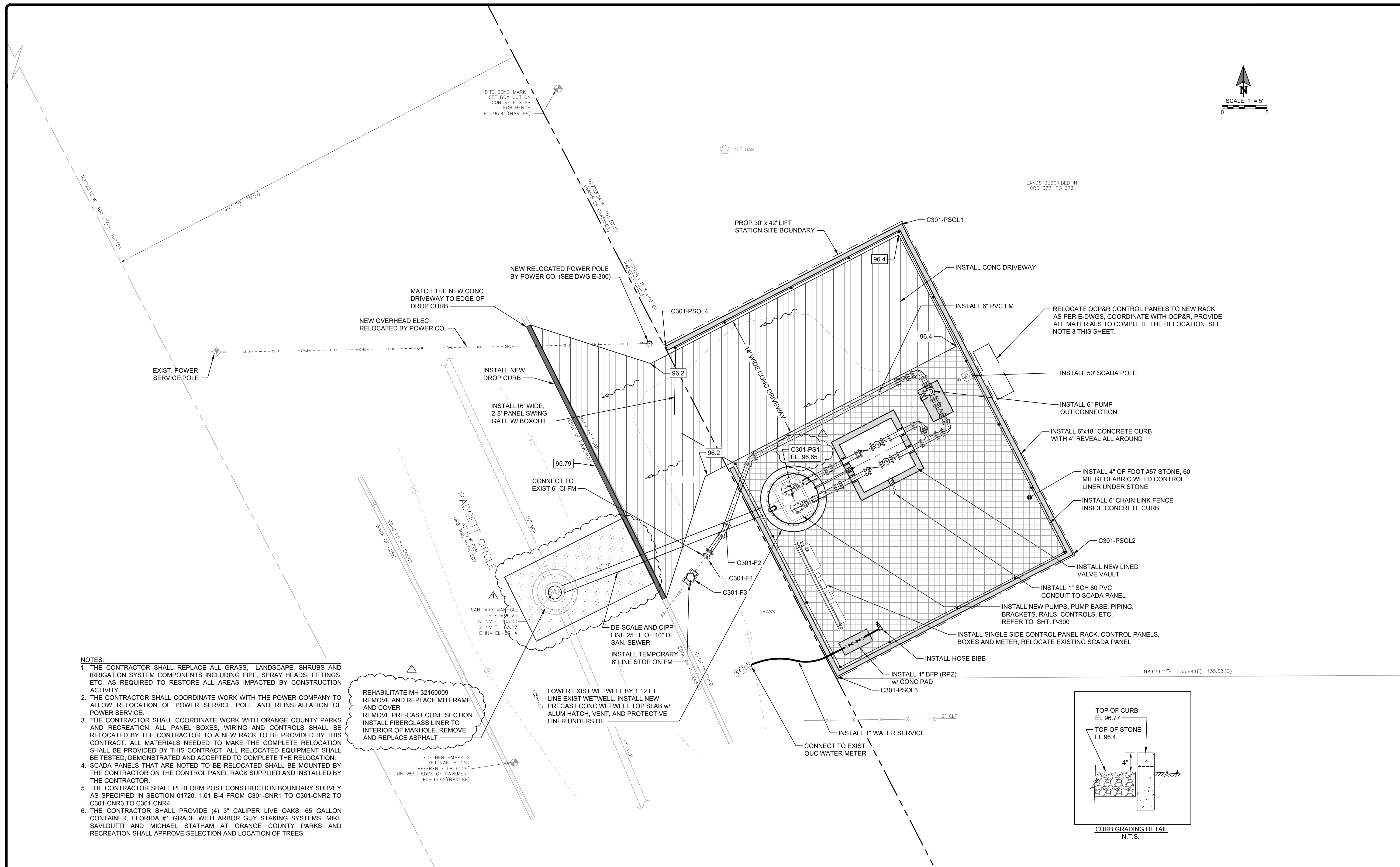
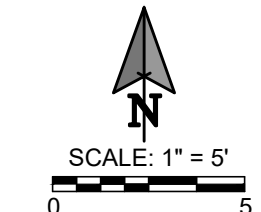
PUMP STATION R/R PACKAGE 10 IMPROVEMENTS
PS 3116 MARTIN Co
EXISTING SITE AND
DEMOLITION PLAN

DESIGN ENGINEER
GEOFFREY J. HENNESSY, P.E.

PROJECT No.: 2014-28-02
PROJECT DATE: JUNE 2017
DESIGNED BY: RGB
DRAWN BY: JAB
CHECKED BY: GJH
DRAWING FILE: SEE MARGIN

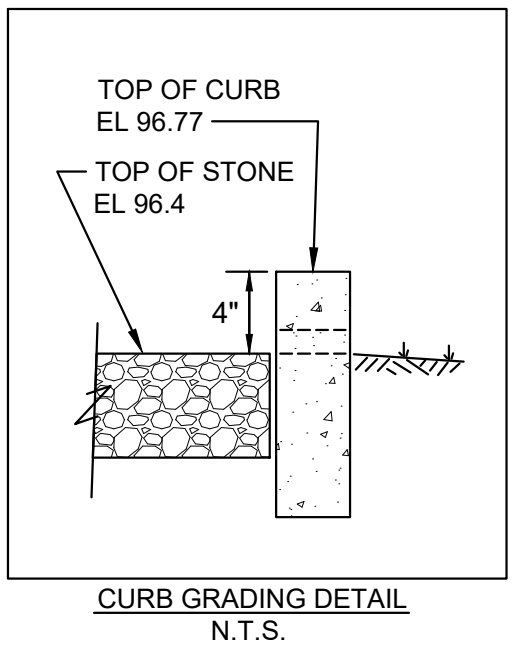
FLORIDA REGISTRATION No.
58637

SHEET
9 OF 34



- NOTES:**
1. THE CONTRACTOR SHALL REPLACE ALL GRASS, LANDSCAPE, SHRUBS AND IRRIGATION SYSTEM COMPONENTS INCLUDING PIPE, SPRAY HEADS, FITTINGS, ETC., AS REQUIRED TO RESTORE ALL AREAS IMPACTED BY CONSTRUCTION ACTIVITY.
 2. THE CONTRACTOR SHALL COORDINATE WORK WITH THE POWER COMPANY TO ALLOW RELOCATION OF POWER SERVICE POLE AND REINSTALLATION OF POWER SERVICE.
 3. THE CONTRACTOR SHALL COORDINATE WORK WITH ORANGE COUNTY PARKS AND RECREATION. ALL PANEL BOXES, WIRING AND CONTROLS SHALL BE RELOCATED BY THE CONTRACTOR TO A NEW RACK TO BE PROVIDED BY THIS CONTRACT. ALL MATERIALS NEEDED TO MAKE THE COMPLETE RELOCATION SHALL BE PROVIDED BY THIS CONTRACT. ALL RELOCATED EQUIPMENT SHALL BE TESTED, DEMONSTRATED AND ACCEPTED TO COMPLETE THE RELOCATION.
 4. SCADA PANELS THAT ARE NOTED TO BE RELOCATED SHALL BE MOUNTED BY THE CONTRACTOR ON THE CONTROL PANEL RACK SUPPLIED AND INSTALLED BY THE CONTRACTOR.
 5. THE CONTRACTOR SHALL PERFORM POST CONSTRUCTION BOUNDARY SURVEY AS SPECIFIED IN SECTION 01720, 1.01 B-4 FROM C301-CNR1 TO C301-CNR2 TO C301-CNR3 TO C301-CNR4
 6. THE CONTRACTOR SHALL PROVIDE (4) 3\"/>

REHABILITATE MH 32160009
 REMOVE AND REPLACE MH FRAME AND COVER
 REMOVE PRE-CAST CONE SECTION
 INSTALL FIBERGLASS LINER TO INTERIOR OF MANHOLE. REMOVE AND REPLACE ASPHALT



No.	REVISIONS	BY	DATE
1	ADDENDUM No 1	GJH	8/8/17
	BID SET	GJH	5/24/2017

LINE IS 2 INCHES
 AT FULL SIZE
 (IF NOT SCALE ACCORDINGLY)

SCALE: AS NOTED

ORANGE COUNTY
 GOVERNMENT
 UTILITIES

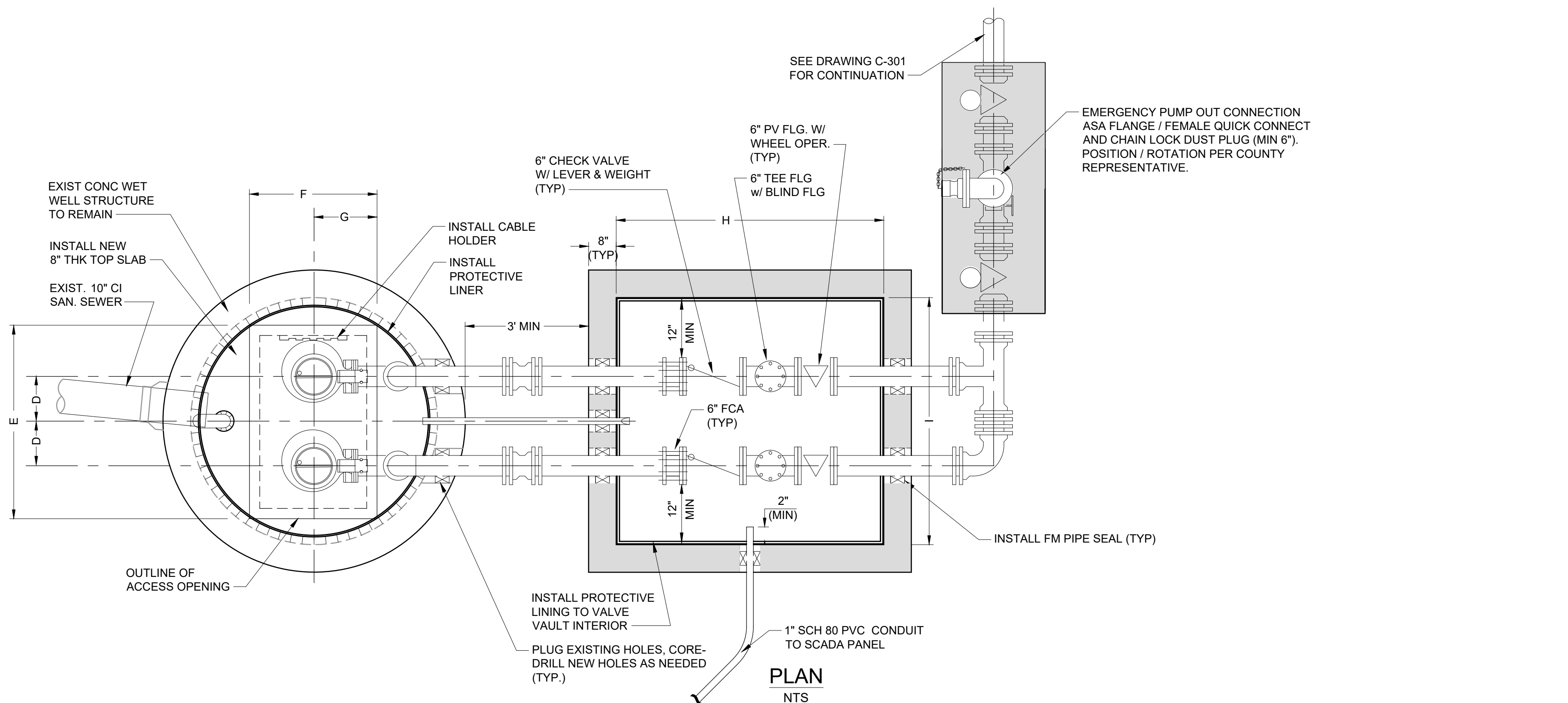
ORANGE COUNTY UTILITIES
 9150 CURRY FORD ROAD
 ORLANDO, FLORIDA 32825

BFA Environmental Consultants
Barnes, Ferland and Associates, Inc.
 1230 E. Hillcrest Street, Orlando, FL, 32803
 PH: (407) 896-8626 FAX: (407) 896-1822
 ENGINEERING BUSINESS No. 6899

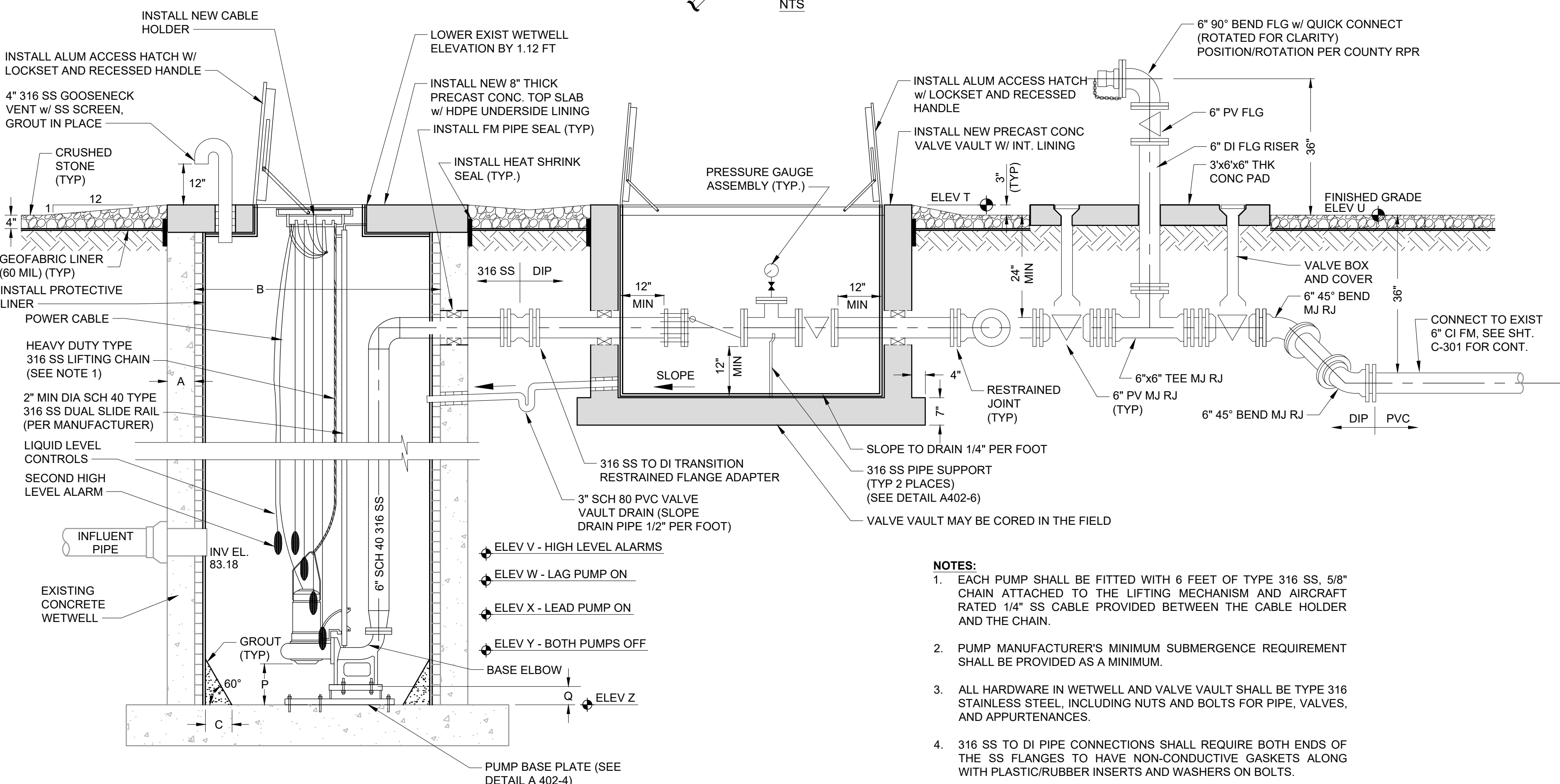
PUMP STATION R/R PACKAGE 10 IMPROVEMENTS

PS 3216 PADGETT CIR PUMP STATION IMPROVEMENTS PLAN

DESIGN ENGINEER GEOFFREY J. HENNESSY, P.E.	PROJECT No.: 2014-28-02 PROJECT DATE: JUNE 2017	DRAWING No. C-301
FLORIDA REGISTRATION No. 58637	DESIGNED BY: RGB DRAWN BY: JAB CHECKED BY: GJH DRAWING FILE: SEE MARGIN	SHEET 15 OF 34



- GENERAL NOTES:**
- ALL MATERIALS AND CONSTRUCTION SHALL BE IN ACCORDANCE WITH THE ORANGE COUNTY UTILITIES STANDARDS AND SPECIFICATIONS MANUAL (LATEST EDITION), AND/OR AS SPECIFIED HEREIN.
 - ALL EXPOSED METAL OUTSIDE OF THE WET WELL SHALL BE IN ACCORDANCE WITH ORANGE COUNTY STANDARDS AND SPECIFICATIONS MANUAL (LATEST EDITION).
 - A CRYSTALLINE WATER PROOFING ADMIXTURE SHALL BE ADDED TO THE CONCRETE DURING THE MIXING CYCLE FOR THE WET WELL AND VALVE VAULT PRECAST STRUCTURES. THE CRYSTALLINE WATER PROOFING ADMIXTURE SHALL BE APPROVED PRODUCT AS LISTED IN OCU APPENDIX D.
 - FOR EXISTING WET WELLS, VALVE VAULTS AND MANHOLES, THE INSIDE SHALL BE LINED WITH A FIBERGLASS REINFORCED POLYESTHER (FRP) LINER. FINAL SEALS AND SEALING TO BE MADE IN THE FIELD. FOR NEW CONSTRUCTION, THE INSIDE OF WET WELLS, VALVE VAULTS AND MANHOLES SHALL BE LINED WITH EITHER A HIGH DENSITY POLYETHYLENE (HDPE) LINER, A FIBERGLASS REINFORCED POLYESTHER (FRP) LINER, OR AN ACCEPTABLE EQUAL AS LISTED IN OCU APPENDIX D. FINAL SEALS AND SEALING TO BE MADE IN THE FIELD.
 - WET WELL ACCESS OPENING SHALL BE COVERED ON ALL FOUR VERTICAL SIDES WITH A PROTECTIVE LINER.
 - WELL ACCESS HATCH AND COVER SHALL BE ALUMINUM WITH 316 STAINLESS STEEL HARDWARE AND LOCK BRACKET PLATE WITH THE WORDS "CONFINED SPACE" STAMPED (ETCHED) ON THE TOP SIDE. EACH DOOR WILL BE EQUIPPED WITH RECESSED HASP ENCLOSURE.
 - ALL PIPING AND HARDWARE IN THE WET WELL SHALL BE 316 STAINLESS STEEL SCHEDULE 40.
 - THERE SHALL BE NO VALVES OR ELECTRICAL JUNCTION BOXES IN THE WET WELL.
 - ALL PIPING AND CONDUIT PENETRATIONS THROUGH CONCRETE SHALL BE WATERTIGHT. CAST-IN-PLACE SLEEVES SHALL BE PLACED IN ALL OPENINGS WHERE PRESSURE PIPE ENTER OR LEAVE THE WET WELL AND/OR VALVE VAULT. PENETRATIONS THROUGH WET WELL AND VALVE VAULT SHALL BE A COMPRESSION TYPE SEAL, SUCH AS "LINK-SEAL", OR AN ACCEPTABLE EQUAL AS LISTED IN OCU APPENDIX D.
 - ALL CONNECTIONS WITHIN THE WET WELL, VALVE VAULT, AND ABOVE GRADE SHALL BE FLANGED JOINTS. ALL REMAINING JOINTS BETWEEN THE WET WELL AND THE CONNECTION TO THE EXISTING FORCE MAIN SHALL BE RESTRAINED MECHANICAL JOINTS. (SEE TABLE ON DETAIL SHEET D100).
 - PIPE SUPPORTS SHALL BE 316 STAINLESS STEEL, PROVIDED AND INSTALLED TO SUPPORT AND ANCHOR THE PIPING SECURELY IN THE VALVE VAULT.
 - VALVE VAULT SHALL BE SIZED TO PERMIT EASY REMOVAL OF CHECK VALVE SPINDLES, WITH MINIMUM CLEARANCE, AS SHOWN FOR 8" DIAMETER PIPE, OR SMALLER.
 - CONTRACTOR SHALL, AS DIRECTED BY THE COUNTY REPRESENTATIVE, REMOVE AND SALVAGE TO THE COUNTY, ALL EXISTING PUMP STATION EQUIPMENT, INCLUDING PUMPS, CHECK VALVES, SHUTOFF VALVES, AND CONTROL PANEL.
 - CONTRACTOR SHALL DEMOLISH AND REMOVE FROM SITE ALL DEBRIS RESULTING FROM THE REMOVAL OF THE EXISTING STRUCTURES.
 - CONTRACTOR SHALL VERIFY ALL DIMENSIONS AND ELEVATIONS PRIOR TO ORDERING ANY MATERIALS OR EQUIPMENT.
 - CONTRACTOR SHALL GROUT FLOOR OF WET WELL, AS REQUIRED BY MANUFACTURER'S SPECIFICATIONS, TO ACCOMMODATE INSTALLATION OF THE NEW PUMPS.
 - STRUCTURAL DESIGN OF THE PRECAST WET WELL, TOP AND VALVE VAULT SHALL BE THE RESPONSIBILITY OF THE PRECAST MANUFACTURER. CONTRACTOR SHALL SUBMIT SHOP DRAWINGS FOR THE PRECAST WET WELL, THE PRECAST WET WELL TOP AND HATCH COVER, RISERS AND THE VALVE VAULT, TO THE ENGINEER.
 - 100-YEAR FLOOD ELEVATION: N.A., SURVEY AREA IS OUTSIDE THE (FIRM) FLOODPLAIN.
 - ALL EXTERNAL JOINTS SHALL BE COVERED WITH A HIGH STRENGTH, WATER TIGHT, PRESS-TO-SEAL TYPE TAPE/AS LISTED IN OCU APPENDIX D.
 - A SECOND HIGH LEVEL ALARM LIQUID FLOAT SHALL BE INSTALLED TO PROVIDE DRY CONTACT FOR SCADA. REFER TO PUMP CONTROL SCHEMATIC.
 - ALL SPOOLS SHALL BE MINIMUM OF SIX INCHES WHERE SPACE ALLOWS.
 - CONTRACTOR SHALL BE RESPONSIBLE FOR ALIGNMENT FROM THE BASE PLATE TO THE RISER PLATE AT NO EXTRA COST TO OCU.



- NOTES:**
- EACH PUMP SHALL BE FITTED WITH 6 FEET OF TYPE 316 SS, 5/8" CHAIN ATTACHED TO THE LIFTING MECHANISM AND AIRCRAFT RATED 1/4" SS CABLE PROVIDED BETWEEN THE CABLE HOLDER AND THE CHAIN.
 - PUMP MANUFACTURER'S MINIMUM SUBMERGENCE REQUIREMENT SHALL BE PROVIDED AS A MINIMUM.
 - ALL HARDWARE IN WETWELL AND VALVE VAULT SHALL BE TYPE 316 STAINLESS STEEL, INCLUDING NUTS AND BOLTS FOR PIPE, VALVES, AND APPURTENANCES.
 - 316 SS TO DI PIPE CONNECTIONS SHALL REQUIRE BOTH ENDS OF THE SS FLANGES TO HAVE NON-CONDUCTIVE GASKETS ALONG WITH PLASTIC/RUBBER INSERTS AND WASHERS ON BOLTS.
 - ALL MECHANICAL JOINTS SHALL BE RESTRAINED. ALL PIPE JOINTS IN WETWELL, VALVE VAULT AND ABOVE GROUND SHALL BE FLANGED TYPE.

PS 3216 PADGETT CIRCLE - DESIGN SPECIFICATIONS

DESIGN A SPECIFICATIONS			DESIGN B SPECIFICATIONS		
MANUFACTURER:	ABS (SULZER)		MANUFACTURER:	FLYGT (XYLEM)	
MODEL:	XFP100 E CB1		MODEL:	CP 3127 MT3	
IMP:	PE 75-4-E		IMP:	484	
DIA:	8.19 IN.		DIA:	8.54 IN.	
SPEED:	1760 RPM		SPEED:	1720 RPM	
DISCHARGE SIZE:	4 IN.		DISCHARGE SIZE:	4 IN.	
DESIGN CONDITIONS:	360 GPM @ 48 FT.		DESIGN CONDITIONS:	360 GPM @ 48 FT.	
HIGH HEAD CONDITION:	N.A.		HIGH HEAD CONDITION:	N.A.	
MINIMUM HEAD CONDITION:	500 GPM @ 42 FT.		MINIMUM HEAD CONDITIONS:	500 GPM @ 42 FT.	
SHUTOFF HEAD:	80 FT.		SHUTOFF HEAD:	80 FT.	

DESCRIPTION	SYMBOL	DIM	ELEV.	DIMENSION	ELEV	DESIGN A & B SPECIFICATION NOTES
THICKNESS OF WALL	A	Exist.		Exist.		1. PER PUMP MANUFACTURER REQUIREMENTS
DIAMETER OF WET WELL	B	6'-0"		6'-0"		
WIDTH OF BOTTOM FILLET	C	*1		SEE NOTE 1		2. DIMENSION P AND ELEVATION Y AND Z MUST MEET BOTH PUMP MFR'S REQUIREMENTS
C/L OF WET WELL TO C/L OF PIPES	D	*1		SEE NOTE 1		
LENGTH OF PUMP ACCESS OPENING	E	*1		SEE NOTE 1		3. EL X - EL Z ≥ 5 FEET
WIDTH OF PUMP ACCESS OPENING	F	*1		SEE NOTE 1		
CENTER OF WET WELL TO EDGE OF HATCH	G	*1		SEE NOTE 1		4. TOP ELEVATION OF WETWELL SHALL BE A MIN OF 1 FT ABOVE 100 YR FLOOD ELEVATION AND THE ELEVATION OF THE CROWN OF THE ROAD
VALVE BOX HATCH OPENING	H	6'-6"		6'-6"		
VALVE BOX HATCH OPENING	I	6'-0"		6'-0"		5. SYMBOLS SHOWN IN THE TABLE ARE USED IN THE ADJACENT PUMP STATION PLAN AND SECTION VIEWS
LIP WIDTH OF WET WELL BASE	R	N.A.		N.A.		
THICKNESS OF WET WELL BASE	S	N.A.		N.A.		
TOP OF WET WELL	T		96.65		96.95	96.65
FINISHED GRADE	U		96.4		96.4	
HIGH LEVEL ALARMS	V		83.10		83.10	
LAG PUMP ON	W		82.60		82.60	
LEAD PUMP ON	X		82.10		82.10	
PUMPS OFF (TOP OF PUMP VOLUTE)	Y		79.85	SEE NOTE 2	79.85	
BOTTOM OF PUMP TO FLOOR OF WET WELL	P	4.6"		5.7"		
STEP HEIGHT (IF REQUIRED)	Q	1.1"		N.A.		
FLOOR OF WET WELL	Z		78.62	SEE NOTE 2	78.62	

No.	REVISIONS	BY	DATE
1	ADDENDUM No 1	GJH	8/8/17
2			
3			
4			
5	BID SET	GJH	5/24/2017

LINE IS 2 INCHES
AT FULL SIZE
(IF NOT SCALE ACCORDINGLY)

SCALE: AS NOTED

ORANGE COUNTY UTILITIES
9150 CURRY FORD ROAD
ORLANDO, FLORIDA 32825

BFA Environmental Consultants
Barnes, Ferland and Associates, Inc.
1250 E. Hillcrest Street, Orlando, FL, 32803
714 (407) 856-8628 FAX: (407) 856-1822
ENGINEERING BUSINESS No. 6899

PUMP STATION R/R PACKAGE 10 IMPROVEMENTS

**PS 3216 PADGETT CIR PUMP STATION PLAN,
SECTION, AND DETAILS**

DESIGN ENGINEER: GEOFFREY J. HENNESSY, P.E.
PROJECT No.: 2014-28-02
PROJECT DATE: JUNE 2017
DESIGNED BY: RGB
DRAWN BY: JAB
CHECKED BY: GJH
DRAWING FILE: SEE MARGIN

FLORIDA REGISTRATION No. 58637

P-300
SHEET 18 OF 34