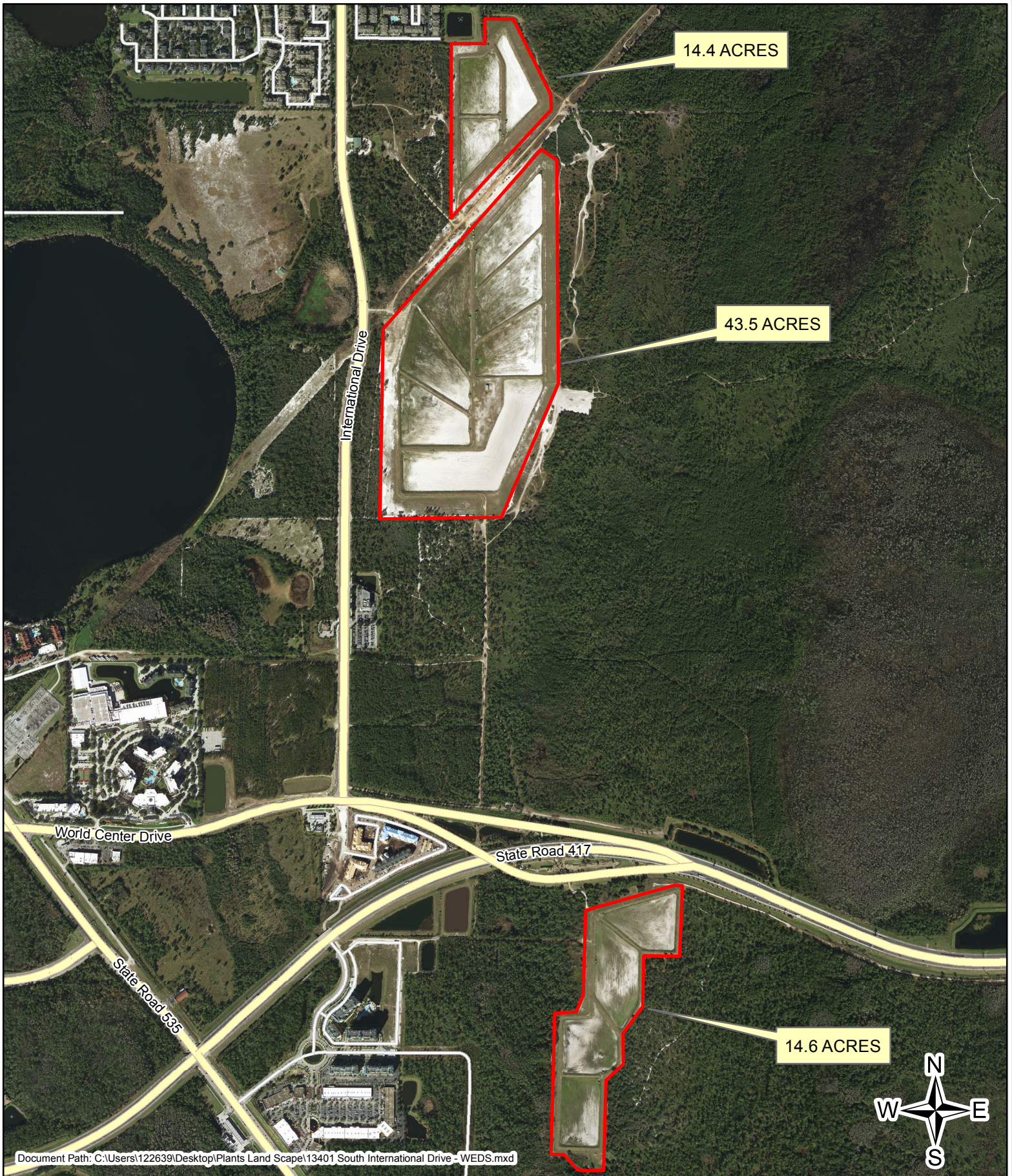


**LOCATION: Westerly Effluent
Discharge Site - "WEDS"
13401 South International Drive
Orlando, FL 32703
Area: Approximatly 72.5 Acres**

**ORANGE COUNTY UTILITIES
WATER RELAMATION
LANDSCAPE MAINTENANCE**

ATTACHMENT 6



LOCATION: Old Winter Garden Road - RIB SITE
8601 Old Winter Garden Road
Orlando, FL 32835
Area: Approximatly 5.48 Acres

ORANGE COUNTY UTILITIES WATER RELAMATION LANDSCAPE MAINTENANCE

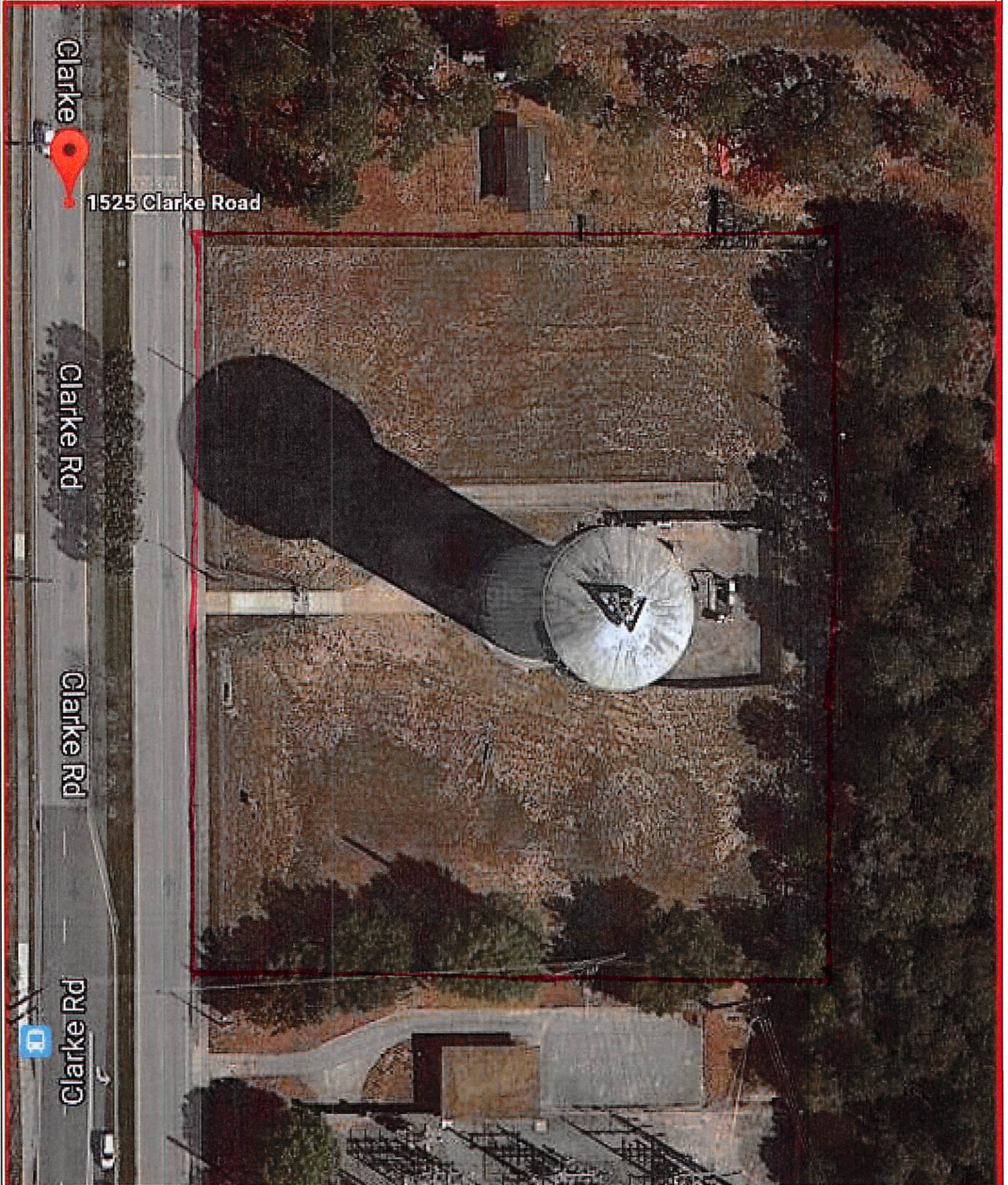
ATTACHMENT 7



LOCATION: Water Tower
1525 Clarks Rd Orlando,
FL
Area: Approximately 2.14
Acres

ORANGE COUNTY
WATER TOWER
LANDSCAPE MAINTENANCE

ATTACHMENT 8



**LOCATION: Orange County Utilities
Water Reclamation
402 Rhode Islands Woods Circle
Orlando, FL 32824
Area: Approximatly 2.3 Acres**

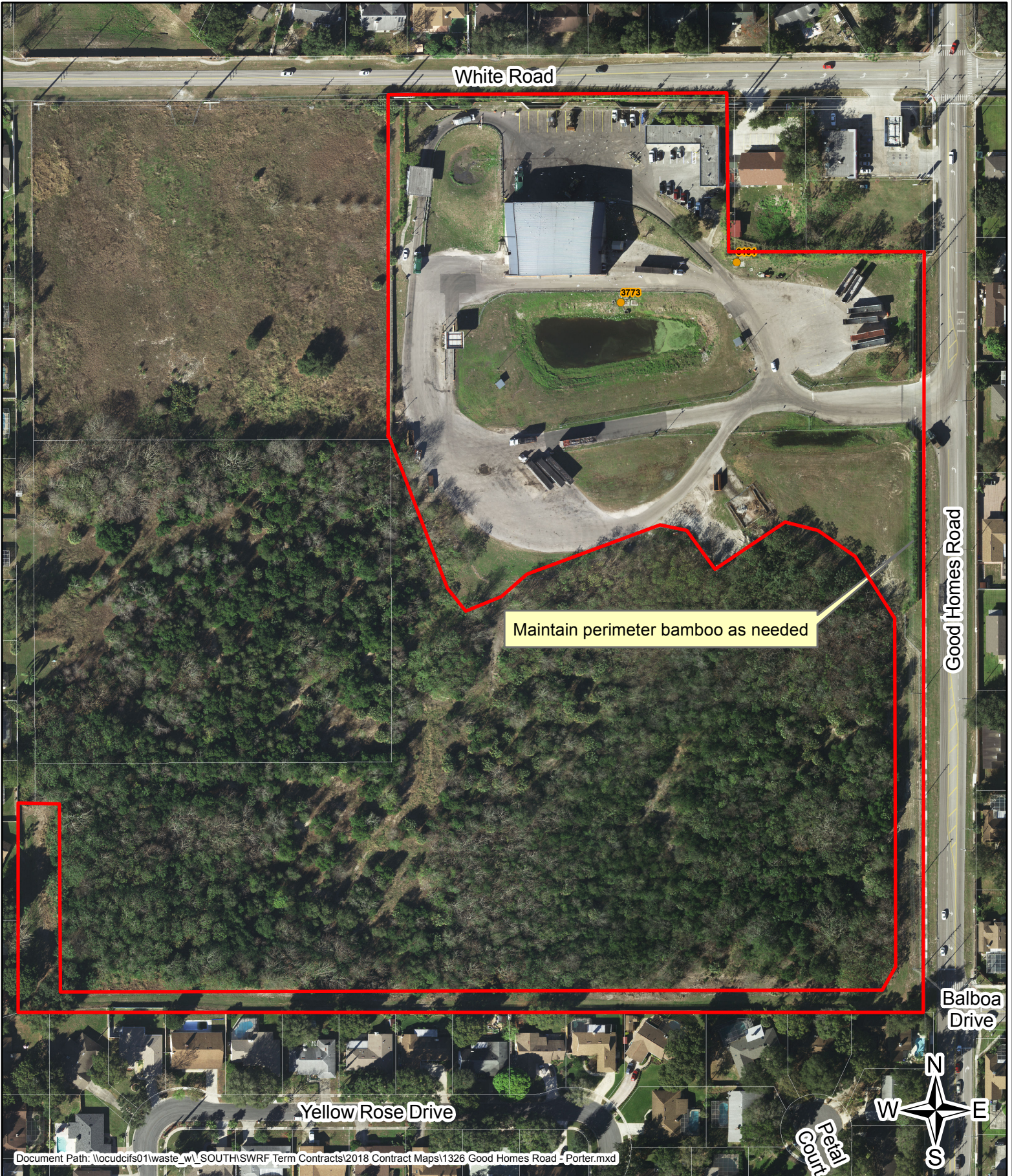
ORANGE COUNTY UTILITIES WATER RECLAMATION LANDSCAPE MAINTENANCE

ATTACHMENT 9



LOCATION: Porter Transfer Station
1326 Good Homes Road
Orlando, FL 32818
Area: Approximatly 11.64 Acres
All internal fenced in area.

ORANGE COUNTY UTILITIES ATTACHMENT 10
SOLID WASTE
LANDSCAPE MAINTENANCE



LOCATION: McLeod Transfer Station
5000 L.B. McLeod Road
Orlando, FL 32811
Area: Approximatly 7.34 Acres
All internal fenced in area.

ORANGE COUNTY UTILITIES ATTACHMENT 11
SOLID WASTE
LANDSCAPE MAINTENANCE

