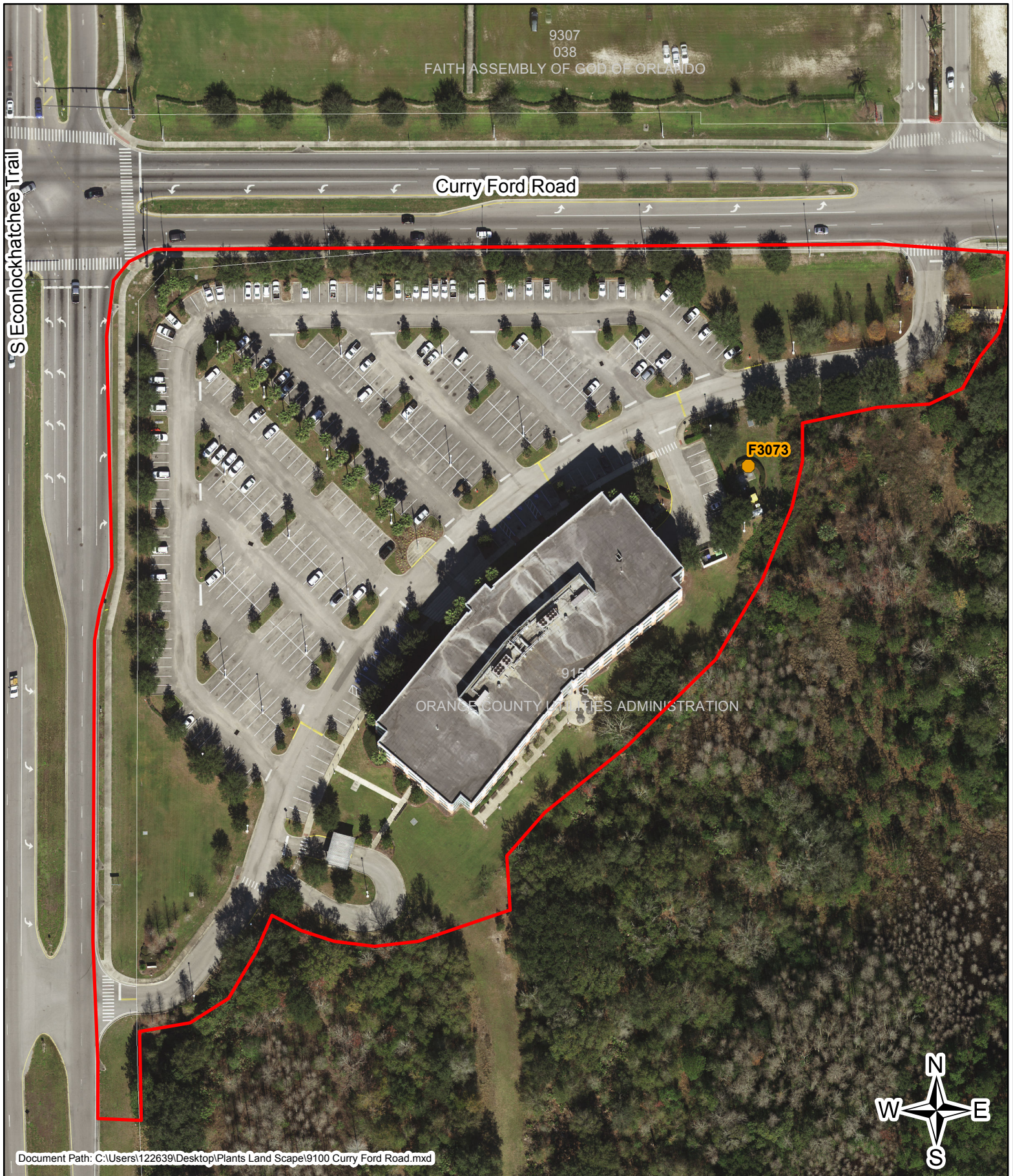


LOCATION: Orange County
Utilities Administration
9150 Curry Ford Road
Orlando, FL 32825
Area: Approximatly 4.94 Acres

ORANGE COUNTY UTILITIES ADMINISTRATION LANDSCAPE MAINTENANCE

ATTACHMENT 1



LOCATION: Presidents Drive
Field Services Division
8100 Presidents Drive
Orlando, FL 32809
Area: Approximatly 1.2 Acres

ORANGE COUNTY UTILITIES
FIELD SERVICES DIVISION
LANDSCAPE MAINTENANCE

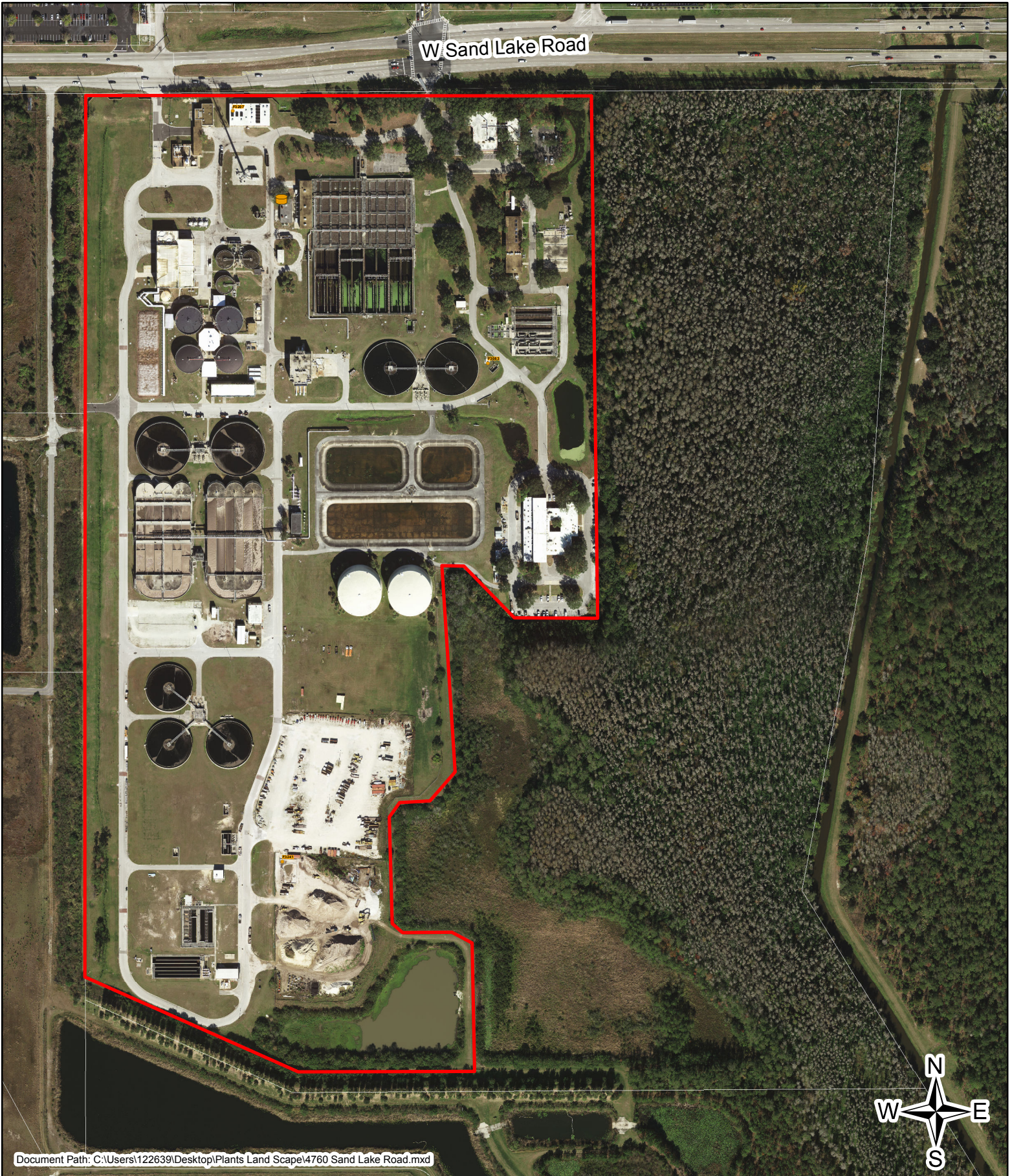
ATTACHMENT 2



**LOCATION: South Water
Reclamation Facility
4760 Sand Lake Road
Orlando, FL 32809
Area: Approximatly 70.5 Acres
All internal fenced in area.**

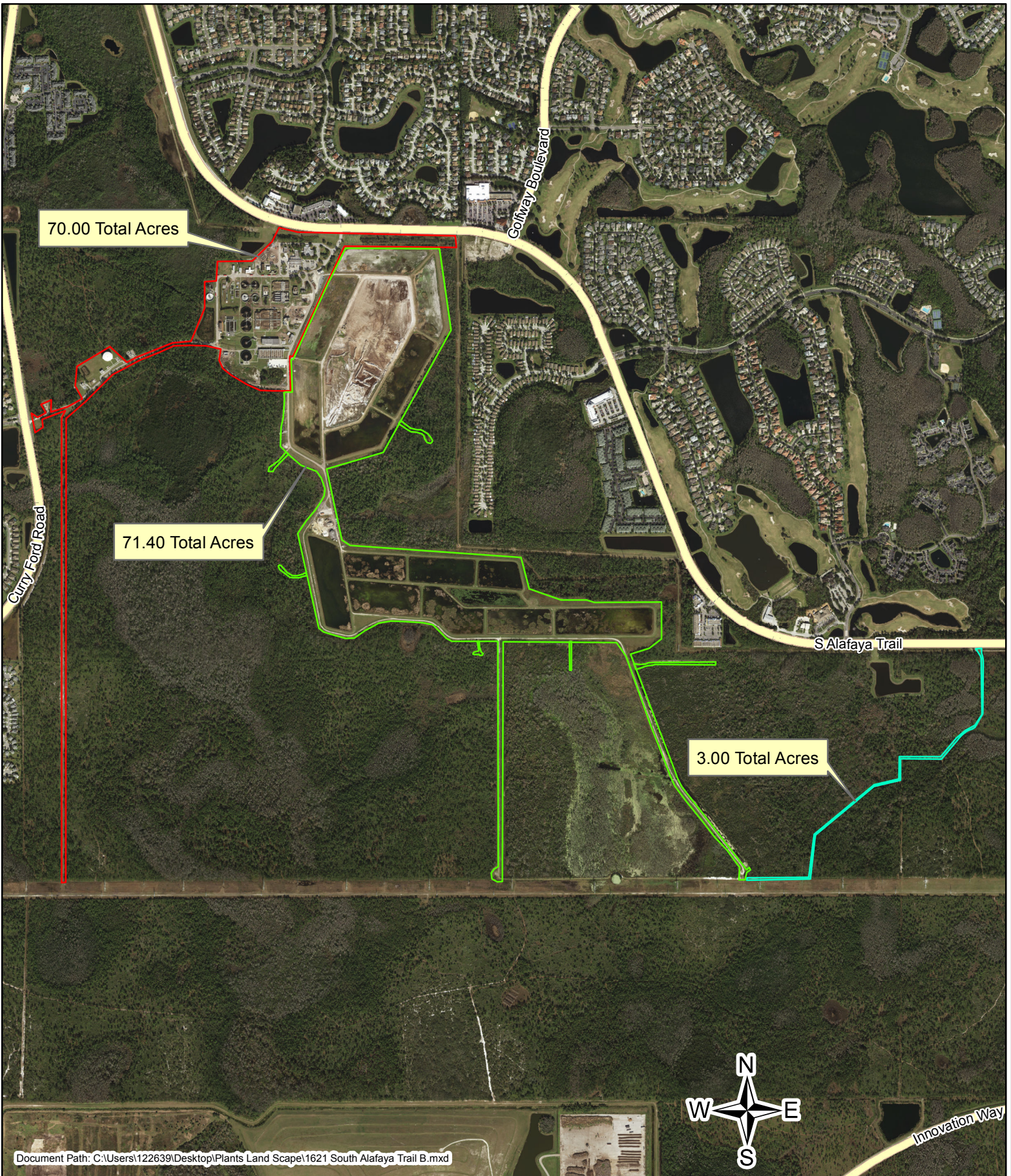
**ORANGE COUNTY UTILITIES
WATER RELAMATION
LANDSCAPE MAINTENANCE**

ATTACHMENT 3



LOCATION: Eastern Water Reclamation Facility
1621 South Alafaya Trail
Orlando, FL 32829
Area: Approximatly 144.40 Acres

ORANGE COUNTY UTILITIES ATTACHMENT 4
WATER RELAMATION
LANDSCAPE MAINTENANCE



LOCATION: Northwest Water
Reclamation Facility
701 West McCormick Road
Apopka, FL 32703
Area: Approximatly 360.67 Acres

ORANGE COUNTY UTILITIES WATER RECLAMATION LANDSCAPE MAINTENANCE

ATTACHMENT 5

