

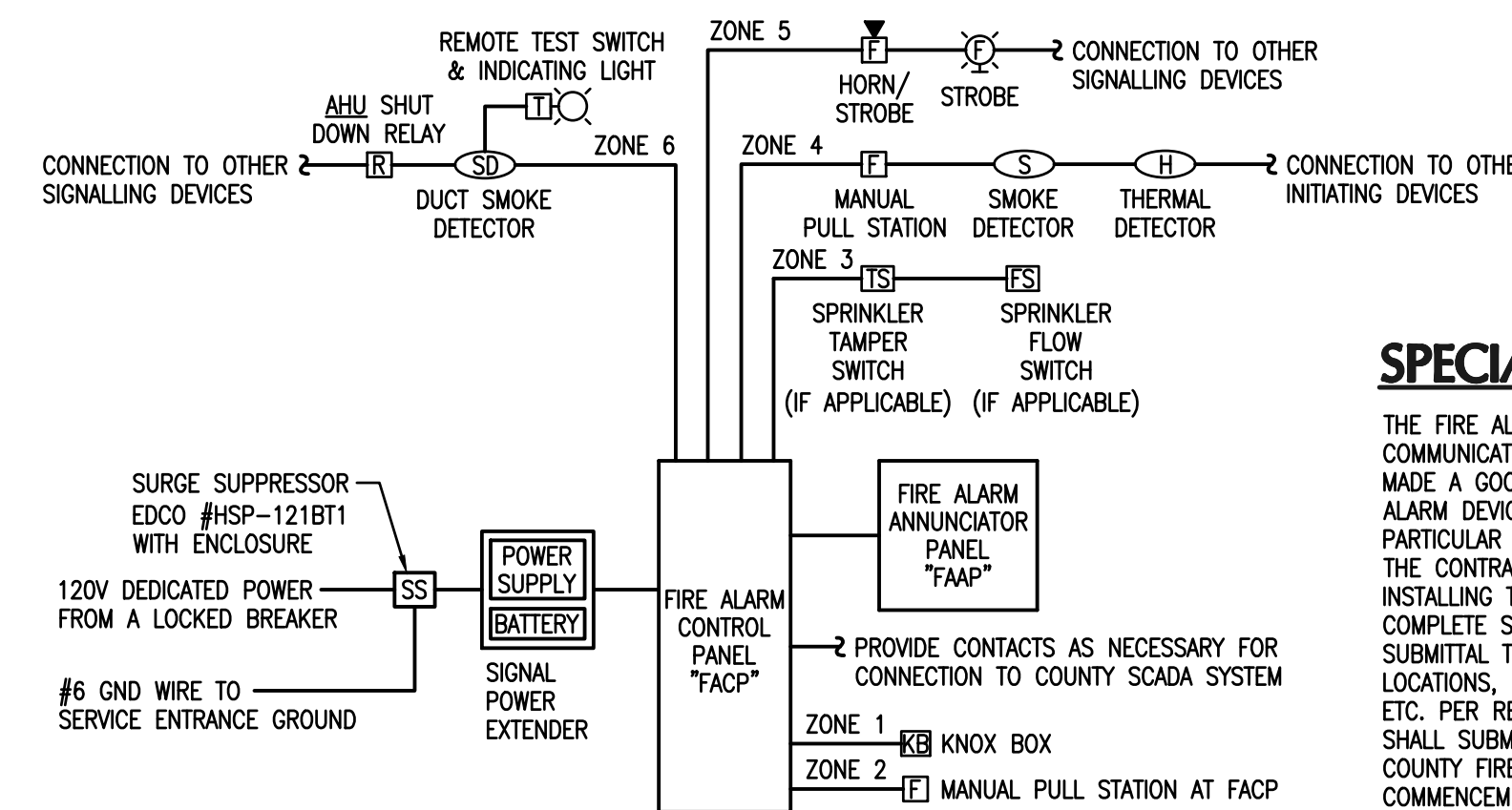
FIRE ALARM SYSTEM SYMBOL LEGEND			
SYMBOL	DESCRIPTION	MOUNTING HEIGHT	MOUNTING
	MANUAL PULL STATION WITH KEY, RESET AND DUAL ACTION OPERATION EP = EXPLOSION PROOF	48" A.F.F. TO CENTER	WALL
	FIRE ALARM HORN AND STROBE WP = WEATHER PROOF	MINIMUM 80" A.F.F. TO BOTTOM AND MAXIMUM 96" A.F.F. TO TOP OF ENTIRE LENS	WALL
	STROBE LIGHT	MINIMUM 80" A.F.F. TO BOTTOM AND MAXIMUM 96" A.F.F. TO TOP OF ENTIRE LENS	WALL
	CEILING MOUNTED SMOKE DETECTOR, PHOTOELECTRIC TYPE	AT CEILING MINIMUM 3' FROM DIFFUSER	CEILING
	DUCT SMOKE DETECTOR, PHOTOELECTRIC TYPE, WITH TUBES SIZED AS REQUIRED FOR DUCT	AT CEILING	HVAC DUCT
	PROJECTED BEAM SMOKE DETECTOR	AT CEILING	WALL
	CEILING MOUNTED HEAT DETECTOR, FIXED TEMPERATURE 135 DEG. F WITH (2) FORM "A" CONTACTS EP = EXPLOSION PROOF	AT CEILING MINIMUM 3' FROM DIFFUSER	CEILING
	FIRE ALARM BELL EP = EXPLOSION PROOF	----	WALL
	FIRE ALARM HORN	----	WALL
	FIRE ALARM WARNING LIGHT, RED LENS	----	WALL
	AHU/EXHAUST FAN SHUT-DOWN RELAY, 24VDC	WITHIN 3 FEET OF STARTER	SURFACE
	KNOX LOCK BOX WITH UL LISTED TAMPER SWITCHES	----	SURFACE
	DUCT SMOKE DETECTOR REMOTE TEST SWITCH AND INDICATING LIGHT	60" A.F.F. TO CENTER OR MOUNT ON HOUSING IF VISIBLE	WALL
	FIRE ALARM CONTROL PANEL WITH SMOKE DETECTOR MOUNTED ABOVE PANEL PER NFPA	6'-0" A.F.F. TO TOP	WALL
	FIRE ALARM ANNUNCIATOR PANEL	6'-0" A.F.F. TO TOP	WALL
	SPRINKLER WATER TAMPER SUPERVISORY SWITCH	----	----
	SPRINKLER WATER FLOW SUPERVISORY SWITCH	----	----

### PROJECT SCOPE OF WORK

- THE EXISTING FIRE ALARM SYSTEMS SERVING THIS FACILITY CONSISTS OF MULTIPLE FIRE ALARM SYSTEMS FROM DIFFERENT MANUFACTURERS AND OF DIFFERENT AGES. SOME SYSTEMS ARE NO LONGER OPERATIONAL. ALL EXISTING SYSTEMS SHALL BE REMOVED IN THEIR ENTIRETY AND SHALL BE REPLACED WITH NEW.
- THE CONTRACTOR SHALL FURNISH AND INSTALL A COMPLETE 24 VDC, CLOSED CIRCUIT, FULLY ADDRESSABLE, ELECTRICALLY SUPERVISED, ZONE ANNUNCIATED FIRE ALARM SYSTEM TO REPLACE AN EXISTING SYSTEM. THE NEW SYSTEM SHALL INCLUDE BUT NOT BE LIMITED TO ALL CONTROL PANELS, POWER SUPPLIES, SIGNAL INITIATING DEVICES, AUDIBLE AND VISUAL ALARM DEVICES, CONDUIT AND WIRING, AND ALL ACCESSORIES REQUIRED TO PROVIDE A COMPLETE CODE COMPLIANT OPERATING SYSTEM.
- ALL DEVICES, APPLIANCES, PANELS, CONDUIT AND WIRING SHALL BE NEW.
- ALL CONTROL/POWER EQUIPMENT FOR THESE SYSTEMS SHALL HAVE SURGE PROTECTION INSTALLED PER NFPA-72 (LATEST EDITION) AND NEC ARTICLES 280 AND 800 (LATEST EDITION).
- ALL WIRING ENTERING OR LEAVING A BUILDING SHALL HAVE SURGE PROTECTION INSTALLED PER NFPA-70 (LATEST EDITION).
- THE CONTRACTOR SHALL REVIEW THE CONTRACT DRAWINGS AND SPECIFICATIONS AND VISIT THE JOB SITE TO ASCERTAIN ALL CONDITIONS INCLUDING CONDUIT RUNS, INTERFACING, INTERFERENCES, CONFLICTS, DISCREPANCIES, ETC. AND SHALL REPORT THE SAME TO THE ENGINEER FOR CLARIFICATION. FAILURE TO COMPLY WITH THIS CONDITION SHALL CONSTITUTE AN ACCEPTANCE OF THE CONDITIONS AND ANY NECESSARY CHANGES WILL BE AT THE CONTRACTOR'S EXPENSE. THE DRAWINGS ARE GENERALLY DIAGRAMMATIC AND DO NOT SHOW ALL EXISTING CONDITIONS AND/OR EVERY ACCESSORY TO BE REMOVED AND/OR REPLACED. DRAWINGS ARE NOT TO BE SCALED, AND SITE CONDITIONS SHALL GOVERN EXACT LOCATION OF ALL ELECTRICAL EQUIPMENT, DEVICES, WIRING, CONDUIT, ETC.
- ALL EXISTING DUCT MOUNTED SMOKE DETECTORS AND RELAYS SHALL BE REPLACED WITH NEW AS PART OF THIS PROJECT.
- THE CONTRACTOR SHALL BE RESPONSIBLE FOR PROVIDING "FIRE WATCH" AS REQUIRED BY THE ORANGE COUNTY BUILDING DEPARTMENT AND THE ORANGE COUNTY FIRE MARSHALL TO PERFORM THE WORK. THE CONTRACTOR SHALL BE RESPONSIBLE FOR ALL COSTS ASSOCIATED WITH "FIRE WATCH". THERE SHALL BE NO ADDITIONAL COST TO THE OWNER FOR "FIRE WATCH".

### GENERAL NOTES

- ALL WORK SHALL BE PERFORMED IN ACCORDANCE WITH FLORIDA BUILDING CODE 6th EDITION (2017 FBC), THE 2014 NATIONAL ELECTRICAL CODE (NEC), ALL APPLICABLE LOCAL, COUNTY, AND STATE CODES AND STANDARDS, ALL REQUIREMENTS OF THE SERVING ELECTRIC UTILITY AND THE AMERICANS WITH DISABILITIES ACT (ADA).
- REFER TO SPECIFICATIONS FOR BASIS OF DESIGN.
- LOCATIONS OF ALL DEVICES ON PLANS ARE APPROXIMATE. CONTRACTOR SHALL VERIFY EXACT LOCATIONS, HEIGHTS, ETC. WITH OWNER PRIOR TO ROUGH-IN.
- PROVIDE UL LISTED FIRE STOPPING ON ALL CONDUITS PENETRATING A FIRE RATED WALL OR FLOOR.
- ALL RACEWAYS TO BE CONCEALED UNLESS SPECIFICALLY NOTED OTHERWISE OR APPROVED BY OWNER. SEE SPECIFICATIONS AND GENERAL NOTES FOR ADDITIONAL CLARIFICATIONS.
- ELECTRICAL CONTRACTOR SHALL INSTALL PULL STRINGS IN ALL EMPTY CONDUITS.
- ALL RACEWAY TERMINATIONS SHALL HAVE BUSHINGS AND BE GROUNDED WHERE RACEWAY IS METAL.
- PROVIDE SYSTEM COMPLETE WITH ALL NEW DEVICES, WIRING, RACEWAYS, CONDUITS, ETC.
- ALL WIRE/CABLE SHALL BE IN A RACEWAY/CONDUIT SYSTEM. INSTALL/SIZE RACEWAY SYSTEM AS REQUIRED TO COMPLY WITH SPECIFICATIONS, THE N.E.C. AND AS RECOMMENDED BY MANUFACTURER.
- MINIMUM RACEWAY/CONDUIT SIZE TO BE 3/4".
- ALL BOXES, PLASTER RINGS, EXTENSION RINGS AND BOX COVERS SHALL BE METAL OR TO SUITE THE ENVIRONMENT IN WHICH INSTALLED.
- ALL CONDUITS SHALL BE PARALLEL AND PERPENDICULAR TO STRUCTURAL MEMBERS.
- ALL BENDS SHALL BE MADE IN CONDUIT USING PROPER EQUIPMENT AND MEET NATIONAL ELECTRICAL CODE (NEC) REQUIREMENTS.
- ALL DEVICES SHALL BE COMMERCIAL OR SPECIFICATION GRADE.
- ALL ELECTRICAL EQUIPMENT SHALL BE UL LISTED.
- GROUNDING SYSTEM SHALL BE IN ACCORDANCE WITH NEC ARTICLE 250 AND APPLICABLE REQUIREMENTS OF IEEE STANDARDS 142 AND 241.
- COORDINATE WITH AUTHORITY HAVING JURISDICTION PRIOR TO BID.
- ALL EQUIPMENT/DEVICES TO BE ADDRESSABLE TYPE.
- ALL STROBES TO BE MINIMUM OF 75 CANDELA UNLESS OTHERWISE NOTED.
- VERIFY LOCATIONS OF DUCT SMOKE DETECTORS WITH MECHANICAL. EACH DETECTOR SHALL BE PROVIDED WITH A REMOTE TEST SWITCH/INDICATOR LIGHT WALL MOUNTED TO BE ACCESSIBLE IN A LOCATION ACCEPTABLE TO THE AUTHORITY HAVING JURISDICTION IN ACCORDANCE WITH NFPA 72.
- MECHANICAL AIR SYSTEM SHUT-DOWN :
  - COORDINATE SHUT-DOWN OF ALL MECHANICAL AIR SYSTEMS WITH DIVISION 15. ALL MECHANICAL AIR SHUT-DOWNS SHALL BE COORDINATED WITH THE OWNER. THE CONTRACTOR SHALL COORDINATE WITH THE OWNER IN BRINGING THE MECHANICAL SYSTEM BACK ON LINE AND IN CORRECT OPERATION. THE CONTRACTOR WILL BE RESPONSIBLE FOR SHUTTING DOWN THE MECHANICAL AIR SYSTEM. THE CONTRACTOR WILL BE RESPONSIBLE FOR BRINGING THE MECHANICAL AIR SYSTEM BACK ON LINE AND OPERATING CORRECTLY.
  - PROVIDE ALL WORK AND EQUIPMENT TO SHUT DOWN ALL AIR MOVING EQUIPMENT AS REQUIRED BY APPLICABLE CODES.
  - VERIFY WITH DIVISION 15 CONTRACTOR LOCATION AND REQUIREMENTS FOR THE INTERFACE TO SHUT DOWN EQUIPMENT UPON FIRE ALARM SIGNAL.
  - UNITS REQUIRED TO BE SHUT DOWN BY THE STANDARD MECHANICAL CODE AND NOT REQUIRED TO BE SHUT DOWN BY THE FIRE ALARM SYSTEM ARE TO HAVE ALL WORK AND EQUIPMENT PROVIDED AND INSTALLED BY DIVISION 15 CONTRACTOR.
  - WHERE REQUIRED, INSTALLER SHALL PROVIDE AND INSTALL AN INDIVIDUAL ADDRESSABLE RELAY OR MODULE AT EACH PIECE OF HVAC EQUIPMENT FOR SHUT-DOWN. DAISY-CHAINING MULTIPLE PIECES OF EQUIPMENT TO A COMMON RELAY OR MODULE SHALL NOT BE ACCEPTABLE.
- COORDINATE WITH OWNER ON REQUIREMENTS FOR MONITORING THE FIRE ALARM SYSTEM AND PROVIDE ALL ELECTRICAL.
- CONTRACTOR SHALL PROVIDE, INSTALL AND TERMINATE ALL ELECTRICAL AND FIRE ALARM SYSTEM EQUIPMENT; INCLUDING BUT NOT LIMITED TO, RACEWAYS, WIRE/CABLE, CIRCUIT BREAKERS, MODULES, RELAYS (UL LISTED FOR USE WITH FIRE ALARM SYSTEMS), ETC. NECESSARY TO SHUT DOWN OR CONTROL ANY AIR HANDLING UNIT, SUPPLY FAN, SMOKE OR FIRE DAMPER, ETC. REQUIRED TO BE SHUT DOWN OR CONTROLLED BY FIRE ALARM SYSTEM. THIS REQUIREMENT FOR CONNECTION OF THE FIRE ALARM SYSTEM SHALL BE EXTENDED TO INCLUDE ANY APPLICABLE CODE OR STANDARD DIRECTLY OR INDIRECTLY REFERENCED BY THE SPECIFICATIONS THAT REQUIRES INTERFACE WITH THE FIRE ALARM SYSTEM FOR CONTROLS OR MONITORING OF A DEVICE IN ORDER TO PROVIDE A COMPLETE CODE COMPLIANT FIRE ALARM SYSTEM. COORDINATE ALL WORK WITH DIVISION 15 (AND/OR ANY OTHER APPLICABLE DIVISION) PRIOR TO ROUGH-IN.
- DO NOT MOUNT SMOKE AND/OR HEAT DETECTORS CLOSER THAN 3 FEET TO ANY SUPPLY REGISTER OF THE HVAC SYSTEM.
- WHEN CEILING MOUNTED, SMOKE AND/OR HEAT DETECTORS SHALL BE MOUNTED NO CLOSER THAN 4 INCHES TO A SIDE WALL; OR WHEN WALL MOUNTED, NO HIGHER THAN 4 INCHES OR LOWER THAN 12 INCHES FROM THE TOP OF THE DETECTOR TO THE CEILING.
- CONTRACTOR TO FIELD VERIFY CEILING DETECTOR TYPES (SMOKE OR HEAT) AND REPLACE ACCORDINGLY WITH NEW DETECTORS.
- UNDERGROUND/OVERHEAD WIRING ENTERING OR LEAVING A BUILDING SHALL BE INSTALLED AND PROTECTED IN ACCORDANCE WITH NFPA72-4.4.4.3, 4.4.4.4, AND NFPA70-ARTICLE 280. WHEN REQUIRED, SURGE SUPPRESSORS SHALL BE INSTALLED IN ACCORDANCE WITH NFPA70-ARTICLE 285.
- PER NFPA 101-9.6.4.4, EMERGENCY FORCES NOTIFICATION SHALL BE VIA THE PLANT SCADA (SUPERVISORY CONTROL AND DATA ACQUISITION) SYSTEM WHERE THIS FACILITY IS CONSTANTLY ATTENDED BY QUALIFIED PERSONNEL (FLORIDA DEP LICENSED CLASS A OPERATOR).



### SPECIAL NOTE

THE FIRE ALARM RISER DIAGRAM IS PROVIDED IN ORDER TO COMMUNICATE THE OVERALL PROJECT SCOPE. THE ENGINEER HAS MADE A GOOD FAITH EFFORT TO IDENTIFY AND INCLUDE ALL FIRE ALARM DEVICES INTO THE RISER DIAGRAM. THE OMISSION OF A PARTICULAR DEVICE FROM THE RISER DIAGRAM DOES NOT ALLEVIATE THE CONTRACTOR FROM THE RESPONSIBILITY OF FURNISHING AND INSTALLING THAT DEVICE. THE CONTRACTOR SHALL PROVIDE A COMPLETE SET OF SIGNED AND SEALED FIRE ALARM SYSTEM SUBMITTAL TO INCLUDE DETAILED SHOP DRAWINGS WITH DEVICE LOCATIONS, FULL SYSTEM RISER DIAGRAM, BATTERY CALCULATIONS, ETC. PER REQUIREMENTS OF THE FIRE ALARM CODE. CONTRACTOR SHALL SUBMIT THESE FIRE ALARM SHOP DRAWINGS TO THE ORANGE COUNTY FIRE MARSHALL AND OBTAIN THEIR APPROVAL PRIOR TO COMMENCEMENT OF WORK.

### FIRE ALARM SYSTEM RISER DIAGRAM (TYPICAL FOR EACH BUILDING)

NO SCALE

REV	DATE	DESCRIPTION

LINE IS 2 INCHES  
AT FULL SIZE  
(IF NOT SCALE ACCORDINGLY)

**ORANGE COUNTY GOVERNMENT**

**ORANGE COUNTY UTILITIES DEPARTMENT ENGINEERING DIVISION**

9156 CURRY FORD ROAD ORLANDO, FL. 32825

**NEEL-SCHAFFER**  
SOLUTIONS YOU CAN BUILD UPON

2301 Lucien Way, Suite 300  
Maitland, Florida 32751  
PH: (407) 647-8823  
CA6556

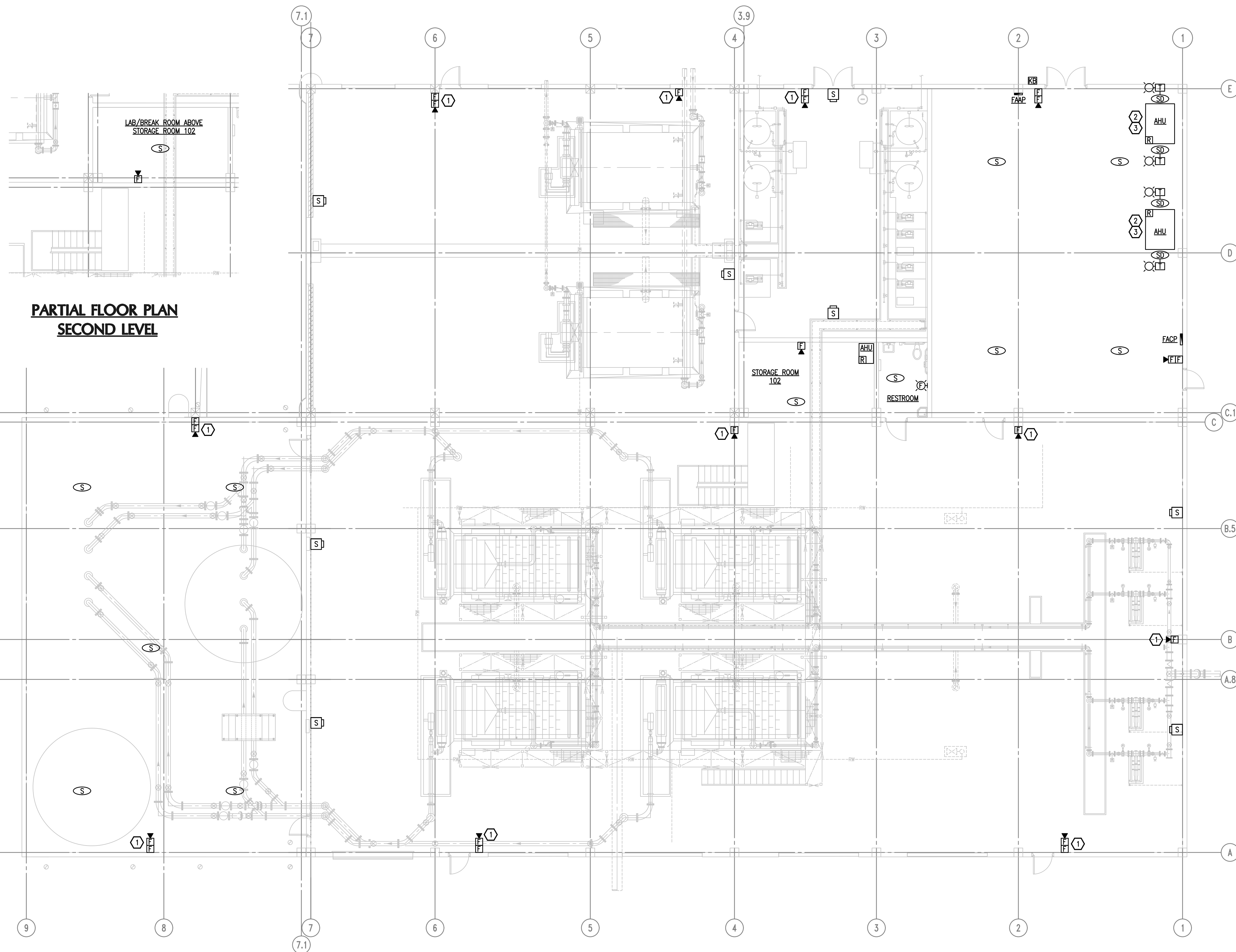
SCOPE OF WORK, LEGEND, GENERAL NOTES AND RISER DIAGRAM

OCU FILE NO.:	SCALE: As Shown
DESIGNED BY: WMC	DRAWING NO.:
DRAWN BY: WMC	<b>E-0.1</b>
CHECKED BY: ABJr	SHEET: 65 OF 71
CADD FILE: E0.1.dwg	

AUGUSTO E. BOBES JR. P.E.  
FLORIDA P.E. # 93410

**BOBES ASSOCIATES CONSULTING ENGINEERS**

150 CIRCLE DRIVE MAITLAND, FL 32751  
TELEPHONE: 407.628.0882  
E-MAIL: INFO@BOBESENG.COM  
FLORIDA STATE P.E. NUMBER: 5131



**PARTIAL FLOOR PLAN  
SECOND LEVEL**

**GENERAL NOTES**

1. REFER TO SHEET E-0.1 FOR SCOPE OF WORK, SYMBOL LEGEND AND GENERAL NOTES.
2. STROBE DEVICES SHALL BE SYNCHRONIZED IN AREAS WHERE MORE THAN ONE STROBE IS VISIBLE PER NFPA 72 - 7.5.4.3.2.
3. CONTRACTOR TO FIELD VERIFY CEILING DETECTOR TYPES (SMOKE OR HEAT) AND SHALL REPLACE ACCORDINGLY WITH NEW DETECTORS (SMOKE OR HEAT).

**KEY NOTES**

1. INSTALL NEW CLEAR PLASTIC WEATHERPROOF COVERS ON ALL PULL STATIONS AND HORN/STROBES; EXCEPT IN THE CONTROL ROOM, STORAGE ROOM, RESTROOM AND LAB, TO BE SIMILAR TO EXISTING INSTALLATION.
2. CONTRACTOR TO FIELD VERIFY ACTUAL NUMBER OF DUCT SMOKE DETECTORS CURRENTLY INSTALLED AND REPLACE WITH NEW DETECTORS.
3. SMOKE DETECTOR INSTALLATION SHALL COMPLY WITH SECTION 606 OF THE 2014 FLORIDA MECHANICAL CODE (5TH EDITION) AND ALL NFPA REQUIREMENTS.

THIS BUILDING IS NOT PROTECTED BY A FIRE SPRINKLER SYSTEM

**FLOOR PLAN - DEWATERING BUILDING - FIRE ALARM**  
SCALE: 1/8" = 1'-0"

**BOBES ASSOCIATES  
CONSULTING ENGINEERS**  
150 CIRCLE DRIVE MAITLAND, FL 32751  
TELEPHONE: 407.628.0882  
E-MAIL: INFO@BOBESENG.COM  
FLORIDA STATE P.E. NUMBER: 5131

REV	DATE	DESCRIPTION

LINE IS 2 INCHES  
AT FULL SIZE  
(IF NOT SCALE ACCORDINGLY)

**ORANGE COUNTY  
GOVERNMENT**  
**ORANGE COUNTY  
UTILITIES DEPARTMENT  
ENGINEERING DIVISION**  
9156 CURRY FORD ROAD ORLANDO, FL. 32825

**NEEL-SCHAFFER**  
SOLUTIONS YOU CAN BUILD UPON  
2301 Lucien Way, Suite 300  
Maitland, Florida 32751  
PH: (407) 647-6823  
CA6556

FLOOR PLAN  
FIRE ALARM SYSTEM

OCU FILE NO.:	SCALE: As Shown
DESIGNED BY: WMC	DRAWING NO.:
DRAWN BY: WMC	<b>E-1.1</b>
CHECKED BY: ABJr	SHEET: 66 OF 71
CADD FILE: E1.1.dwg	

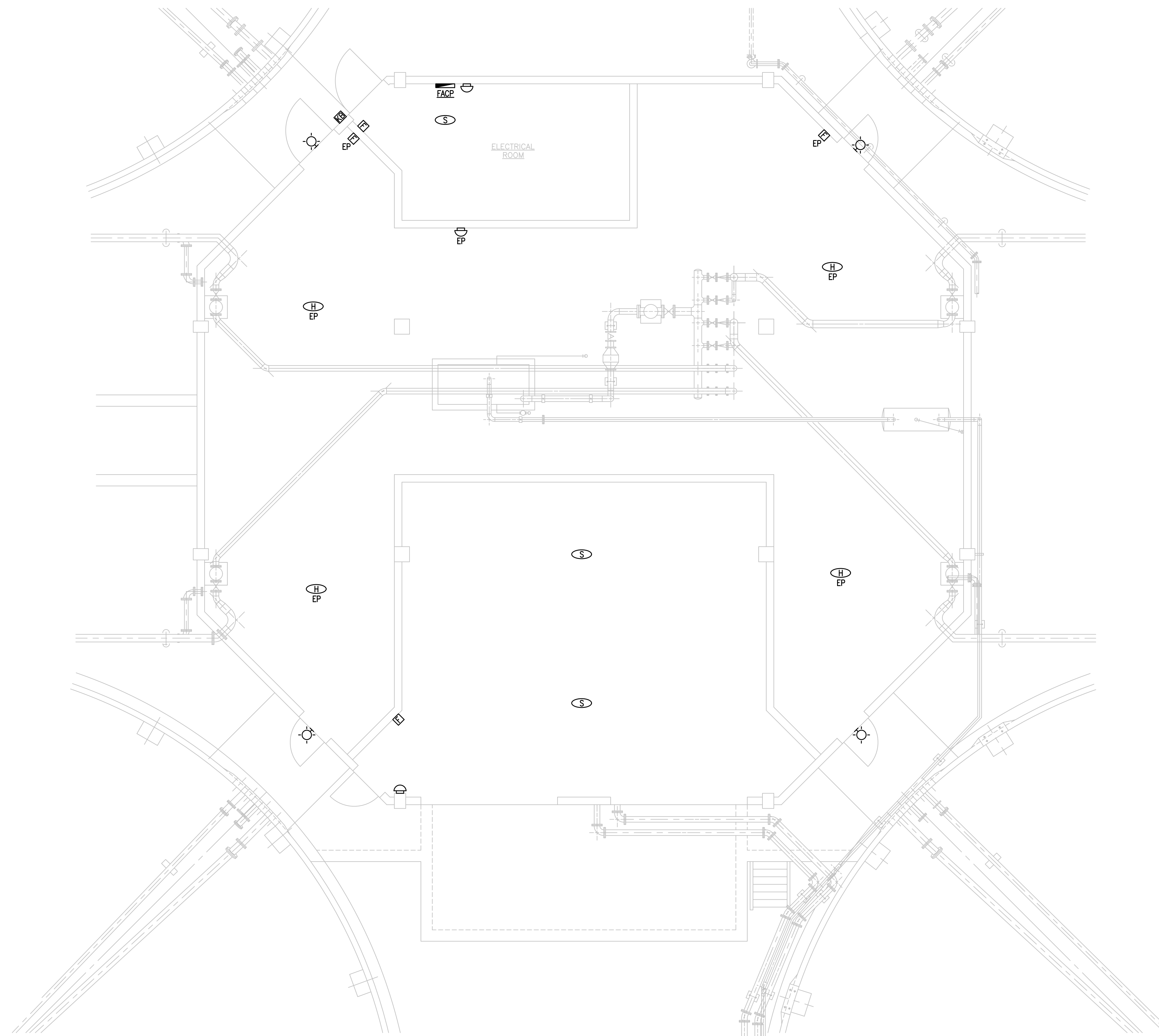
AUGUSTO E. BOBES JR. P.E.  
FLORIDA P.E. #93410

**GENERAL NOTES**

1. REFER TO SHEET E-0.1 FOR SCOPE OF WORK, SYMBOL LEGEND AND GENERAL NOTES.
2. STROBE DEVICES SHALL BE SYNCHRONIZED IN AREAS WHERE MORE THAN ONE STROBE IS VISIBLE PER NFPA 72 - 7.5.4.3.2.
3. CONTRACTOR TO FIELD VERIFY CEILING DETECTOR TYPES (SMOKE OR HEAT) AND SHALL REPLACE ACCORDINGLY WITH NEW DETECTORS (SMOKE OR HEAT).

**KEY NOTES**

1. INSTALL NEW CLEAR PLASTIC WEATHERPROOF COVERS ON ALL PULL STATIONS AND HORN/STROBES TO BE SIMILAR TO EXISTING INSTALLATION.
2. INSTALL FIRE ALARM CONTROL PANEL IN A NEMA 3R ENCLOSURE WITH A WINDOW IN THE DOOR TO BE SIMILAR TO EXISTING INSTALLATION.



THIS BUILDING IS NOT PROTECTED BY A FIRE SPRINKLER SYSTEM

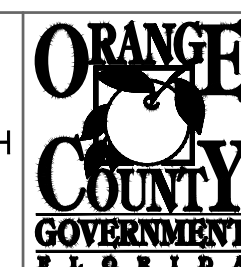
**FLOOR PLAN - DIGESTER BUILDING - FIRE ALARM**  
SCALE: 3/16" = 1'-0"

<b>B</b>	<b>A</b>	<b>BOBES ASSOCIATES CONSULTING ENGINEERS</b>
<b>C</b>	<b>E</b>	

150 CIRCLE DRIVE MAITLAND, FL 32751  
TELEPHONE: 407.628.0882  
E-MAIL: INFO@BOBESENG.COM  
FLORIDA STATE P.E. NUMBER: 5131

REV	DATE	DESCRIPTION

LINE IS 2 INCHES  
AT FULL SIZE  
(IF NOT SCALE ACCORDINGLY)



**ORANGE COUNTY UTILITIES DEPARTMENT  
ENGINEERING DIVISION**  
9156 CURRY FORD ROAD ORLANDO, FL. 32825

**NEEL-SCHAFFER**  
SOLUTIONS YOU CAN BUILD UPON  
2301 Lucien Way, Suite 300  
Maitland, Florida 32751  
PH: (407) 647-6823  
CA6556

FLOOR PLAN  
FIRE ALARM SYSTEM

OCU FILE NO.:	SCALE: As Shown
DESIGNED BY: WMC	DRAWING NO.:
DRAWN BY: WMC	<b>E-1.2</b>
CHECKED BY: ABJr	SHEET: 67 OF 71
CADD FILE: E1.2.dwg	

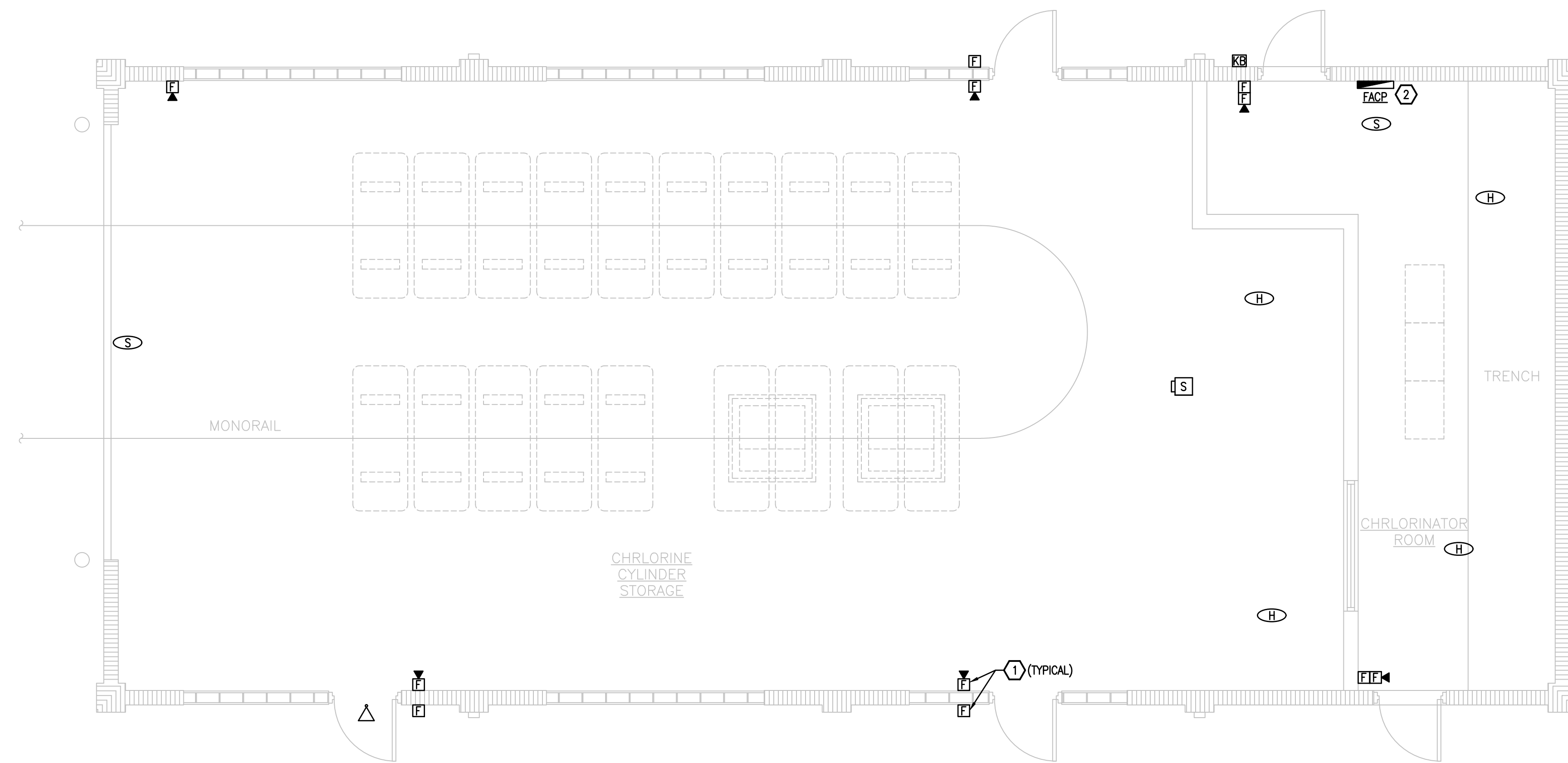
AUGUSTO E. BOBES JR. P.E.  
FLORIDA P.E. # 93410

**GENERAL NOTES**

1. REFER TO SHEET E-0.1 FOR SCOPE OF WORK, SYMBOL LEGEND AND GENERAL NOTES.
2. STROBE DEVICES SHALL BE SYNCHRONIZED IN AREAS WHERE MORE THAN ONE STROBE IS VISIBLE PER NFPA 72 - 7.5.4.3.2.
3. CONTRACTOR TO FIELD VERIFY CEILING DETECTOR TYPES (SMOKE OR HEAT) AND SHALL REPLACE ACCORDINGLY WITH NEW DETECTORS (SMOKE OR HEAT).

**KEY NOTES**

1. INSTALL NEW CLEAR PLASTIC WEATHERPROOF COVERS ON ALL PULL STATIONS AND HORN/STROBES TO BE SIMILAR TO EXISTING INSTALLATION.
2. INSTALL FIRE ALARM CONTROL PANEL IN A NEMA 3R ENCLOSURE WITH A WINDOW IN THE DOOR TO BE SIMILAR TO EXISTING INSTALLATION.



THIS BUILDING IS NOT PROTECTED BY A FIRE SPRINKLER SYSTEM

**FLOOR PLAN - CHLORINE BUILDING - FIRE ALARM**  
SCALE: 1/4" = 1'-0"

**BOBES ASSOCIATES CONSULTING ENGINEERS**  
150 CIRCLE DRIVE MAITLAND, FL 32751  
TELEPHONE: 407.628.0882  
E-MAIL: INFO@BOBESENG.COM  
FLORIDA STATE P.E. NUMBER: 5131

REV	DATE	DESCRIPTION

LINE IS 2 INCHES AT FULL SIZE (IF NOT SCALE ACCORDINGLY)

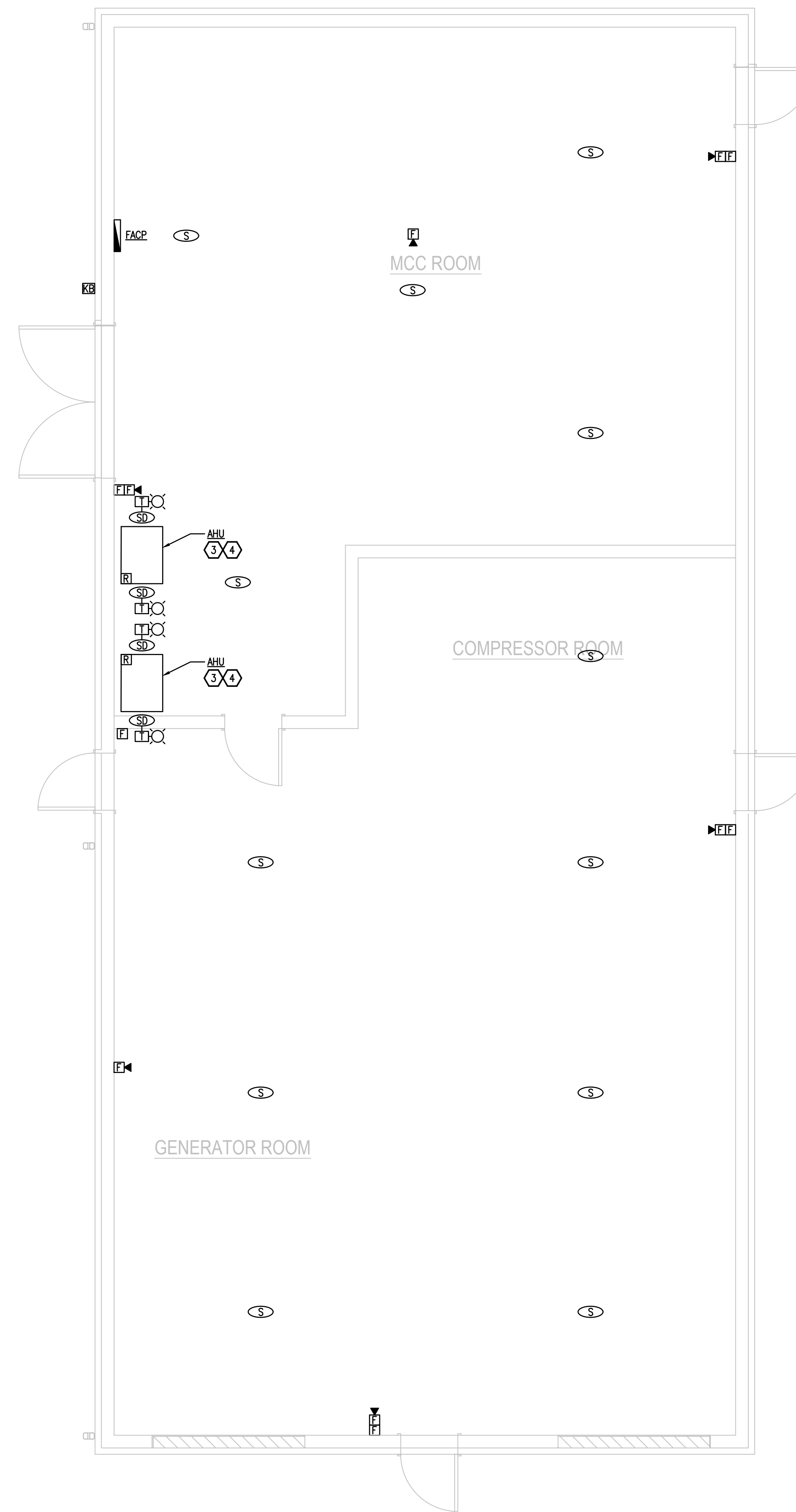
**ORANGE COUNTY GOVERNMENT**  
**ORANGE COUNTY UTILITIES DEPARTMENT ENGINEERING DIVISION**  
9156 CURRY FORD ROAD ORLANDO, FL. 32825

**NEEL-SCHAFFER**  
SOLUTIONS YOU CAN BUILD UPON  
2301 Lucien Way, Suite 300  
Maitland, Florida 32751  
PH: (407) 647-6823  
CA6556

FLOOR PLAN  
FIRE ALARM SYSTEM

OCU FILE NO.:	SCALE: As Shown
DESIGNED BY: WMC	DRAWING NO.:
DRAWN BY: WMC	<b>E-1.3</b>
CHECKED BY: ABJr	SHEET: 68 OF 71
CADD FILE: E1.3.dwg	

AUGUSTO E. BOBES JR. P.E.  
FLORIDA P.E. # 93410



**GENERAL NOTES**

1. REFER TO SHEET E-0.1 FOR SCOPE OF WORK, SYMBOL LEGEND AND GENERAL NOTES.
2. STROBE DEVICES SHALL BE SYNCHRONIZED IN AREAS WHERE MORE THAN ONE STROBE IS VISIBLE PER NFPA 72 - 7.5.4.3.2.
3. CONTRACTOR TO FIELD VERIFY CEILING DETECTOR TYPES (SMOKE OR HEAT) AND SHALL REPLACE ACCORDINGLY WITH NEW DETECTORS (SMOKE OR HEAT).

**KEY NOTES**

- ① INSTALL NEW CLEAR PLASTIC WEATHERPROOF COVERS ON ALL PULL STATIONS AND HORN/STROBES TO BE SIMILAR TO EXISTING INSTALLATION.
- ② INSTALL FIRE ALARM CONTROL PANEL IN A NEMA 3R ENCLOSURE WITH A WINDOW IN THE DOOR TO BE SIMILAR TO EXISTING INSTALLATION.
- ③ CONTRACTOR TO FIELD VERIFY ACTUAL NUMBER OF DUCT SMOKE DETECTORS CURRENTLY INSTALLED AND REPLACE WITH NEW DETECTORS.
- ④ SMOKE DETECTOR INSTALLATION SHALL COMPLY WITH SECTION 606 OF THE 2014 FLORIDA MECHANICAL CODE (5TH EDITION) AND ALL NFPA REQUIREMENTS.

THIS BUILDING IS NOT PROTECTED BY A FIRE SPRINKLER SYSTEM

**FLOOR PLAN - GENERATOR BUILDING - FIRE ALARM**  
SCALE: 1/4" = 1'-0"

B	A	<b>BOBES ASSOCIATES CONSULTING ENGINEERS</b>
C	E	

REV	DATE	DESCRIPTION

LINE IS 2 INCHES  
AT FULL SIZE  
(IF NOT SCALE ACCORDINGLY)

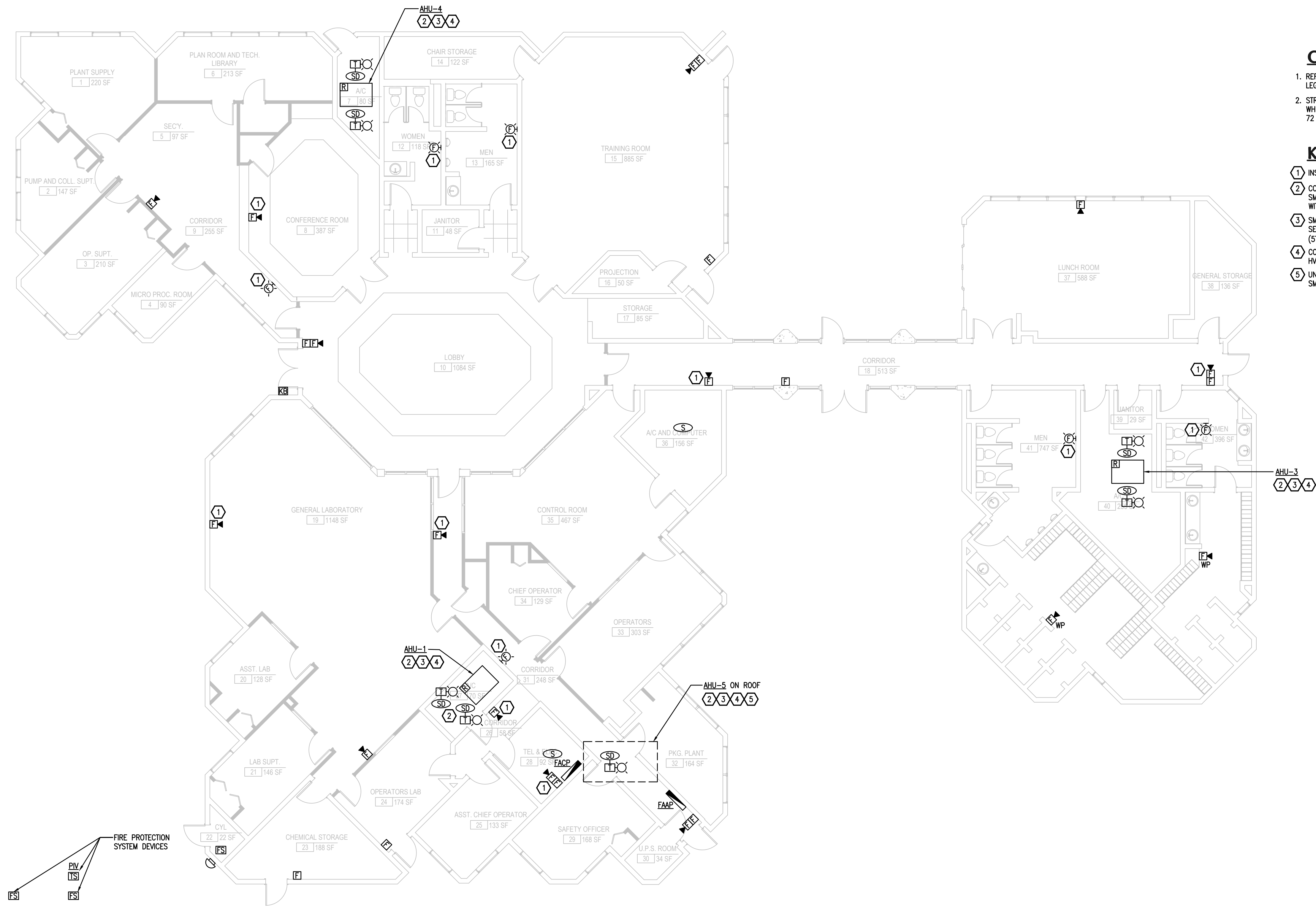
**ORANGE COUNTY GOVERNMENT**  
**ORANGE COUNTY UTILITIES DEPARTMENT ENGINEERING DIVISION**  
 9156 CURRY FORD ROAD ORLANDO, FL. 32825

**NEEL-SCHAFFER**  
 SOLUTIONS YOU CAN BUILD UPON  
 2301 Lucien Way, Suite 300  
 Maitland, Florida 32751  
 PH: (407) 647-6823  
 CA6556

FLOOR PLAN  
FIRE ALARM SYSTEM

OCU FILE NO.:	SCALE: As Shown
DESIGNED BY: WMC	DRAWING NO.:
DRAWN BY: WMC	<b>E-1.4</b>
CHECKED BY: ABJr	SHEET: 69 OF 71
CADD FILE: E1.4.dwg	

AUGUSTO E. BOBES JR. P.E.  
FLORIDA P.E. # 93410



**GENERAL NOTES**

1. REFER TO SHEET E-0.1 FOR SCOPE OF WORK, SYMBOL LEGEND AND GENERAL NOTES.
2. STROBE DEVICES SHALL BE SYNCHRONIZED IN AREAS WHERE MORE THAN ONE STROBE IS VISIBLE PER NFPA 72 - 7.5.4.3.2.

**KEY NOTES**

1. INSTALL A NEW FIRE ALARM DEVICE AT A NEW LOCATION.
2. CONTRACTOR TO FIELD VERIFY ACTUAL NUMBER OF DUCT SMOKE DETECTORS CURRENTLY INSTALLED AND REPLACE WITH NEW DETECTORS.
3. SMOKE DETECTOR INSTALLATION SHALL COMPLY WITH SECTION 606 OF THE 2014 FLORIDA MECHANICAL CODE (5TH EDITION) AND ALL NFPA REQUIREMENTS.
4. CONTRACTOR TO COORDINATE THEIR WORK WITH THE HVAC TRADE DURING AIR HANDLING UNIT REPLACEMENT.
5. UNIT IS A 100% OUTSIDE AIR MAKE UP UNIT - PROVIDE SMOKE DETECTOR ON MAIN SUPPLY AIR DUCT.

**FLOOR PLAN - ADMINISTRATION BUILDING - FIRE ALARM**  
 SCALE: 1/8" = 1'-0"

REV	DATE	DESCRIPTION

LINE IS 2 INCHES  
AT FULL SIZE  
(IF NOT SCALE ACCORDINGLY)

**ORANGE COUNTY UTILITIES DEPARTMENT  
ENGINEERING DIVISION**  
 9156 CURRY FORD ROAD ORLANDO, FL. 32825

**NEEL-SCHAFFER**  
 SOLUTIONS YOU CAN BUILD UPON  
 2301 Lucien Way, Suite 300  
 Maitland, Florida 32751  
 PH: (407) 647-6823  
 CA6556

**FLOOR PLAN  
FIRE ALARM SYSTEM**

OCU FILE NO.:	SCALE: As Shown
DESIGNED BY: WMC	DRAWING NO.:
DRAWN BY: WMC	<b>E-1.5</b>
CHECKED BY: ABJr	SHEET: 70 OF 71
CADD FILE: E1.5.dwg	

AUGUSTO E. BOBES JR. P.E.  
FLORIDA P.E. # 93410

**BOBES ASSOCIATES  
CONSULTING ENGINEERS**  
 150 CIRCLE DRIVE MAITLAND, FL 32751  
 TELEPHONE: 407.628.0882  
 E-MAIL: INFO@BOBESENG.COM  
 FLORIDA STATE P.E. NUMBER: 5131



**GENERAL NOTES**

1. REFER TO SHEET E-0.1 FOR SCOPE OF WORK, SYMBOL LEGEND AND GENERAL NOTES.
2. STROBE DEVICES SHALL BE SYNCHRONIZED IN AREAS WHERE MORE THAN ONE STROBE IS VISIBLE PER NFPA 72 - 7.5.4.3.2.
3. CONTRACTOR TO FIELD VERIFY CEILING DETECTOR TYPES (SMOKE OR HEAT) AND SHALL REPLACE ACCORDINGLY WITH NEW DETECTORS (SMOKE OR HEAT).

**KEY NOTES**

1. INSTALL A NEW FIRE ALARM DEVICE AT A NEW LOCATION.
2. CONTRACTOR TO FIELD VERIFY ACTUAL NUMBER OF DUCT SMOKE DETECTORS CURRENTLY INSTALLED AND REPLACE WITH NEW DETECTORS.
3. SMOKE DETECTOR INSTALLATION SHALL COMPLY WITH SECTION 606 OF THE 2014 FLORIDA MECHANICAL CODE (5TH EDITION) AND ALL NFPA REQUIREMENTS.
4. CONTRACTOR TO COORDINATE THEIR WORK WITH THE HVAC TRADE DURING AIR HANDLING UNIT REPLACEMENT.

**FLOOR PLAN - MAINTENANCE BUILDING - FIRE ALARM**  
 SCALE: 1/8" = 1'-0"

**BOBES ASSOCIATES CONSULTING ENGINEERS**  
 150 CIRCLE DRIVE MAITLAND, FL 32751  
 TELEPHONE: 407.628.0882  
 E-MAIL: INFO@BOBESENG.COM  
 FLORIDA STATE P.E. NUMBER: 5131

REV	DATE	DESCRIPTION

LINE IS 2 INCHES  
 AT FULL SIZE  
 (IF NOT SCALE ACCORDINGLY)

**ORANGE COUNTY GOVERNMENT**  
**ORANGE COUNTY UTILITIES DEPARTMENT**  
**ENGINEERING DIVISION**  
 9156 CURRY FORD ROAD ORLANDO, FL. 32825

**NEEL-SCHAFFER**  
 SOLUTIONS YOU CAN BUILD UPON  
 2301 Lucien Way, Suite 300  
 Maitland, Florida 32751  
 PH: (407) 647-6823  
 CA6556

**FLOOR PLAN  
 FIRE ALARM SYSTEM**

OCU FILE NO.:	SCALE: As Shown
DESIGNED BY: WMC	DRAWING NO.:
DRAWN BY: WMC	<b>E-1.6</b>
CHECKED BY: ABJr	SHEET: 71 OF 71
CADD FILE: E1.6.dwg	

AUGUSTO E. BOBES JR. P.E.  
 FLORIDA P.E. # 93410