

ORANGE COUNTY TAFT HEAD START

PARKING ADDITION

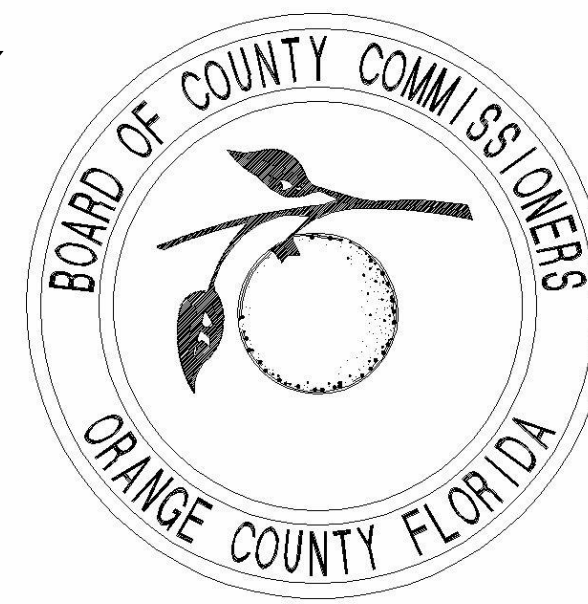
**SITE WORK PERMIT DRAWINGS
JULY 18, 2017**

MAYOR
TERESA JACOBS

COMMISSIONER
BETSY VANDERLEY
DISTRICT 1

COMMISSIONER
BYRAN NELSON
DISTRICT 2

COMMISSIONER
PETE CLARKE
DISTRICT 3



COMMISSIONER
JENNIFER THOMPSON
DISTRICT 4

COMMISSIONER
EMILY BONILLA
DISTRICT 5

COMMISSIONER
VICTORIA P. SIPLIN
DISTRICT 6

**OWNER:
BOARD OF COUNTY
COMMISSIONERS
ORANGE COUNTY, FLORIDA**



ARCHITECTURAL GROUP, INC.

5032 GODDARD AVENUE, SUITE
A
ORLANDO, FLORIDA 32804
(407) 245-3660
FL LIC. # AA0002264

PROJECT TITLE AND OWNERS NAME

**ORANGE COUNTY
TAFT HEAD START
PARKING ADDITION**

**ORANGE COUNTY
ORLANDO**

**BID SET
SITE BID/PERMIT SET**

CONSULTANTS

Majid Kalaghchi, PE 41046

SEAL AND SIGNATURE

REVISIONS

DRAWN BY

MSG

CHECKED BY

BSY

JOB NUMBER

1621

DATE

7.18.17

DRAWING TITLE

COVER SHEET

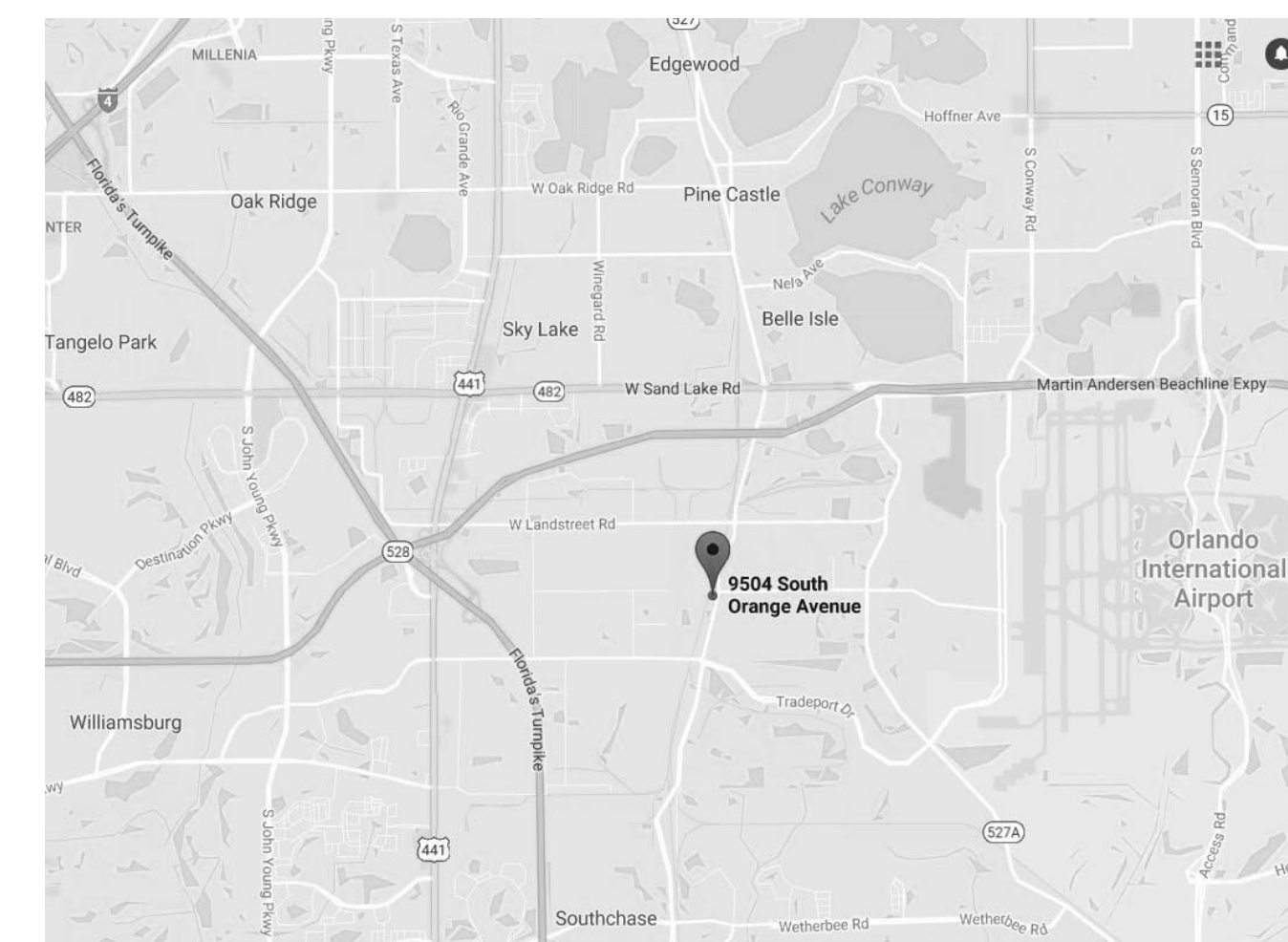
DRAWING NUMBER

C.01

SHEET OF
COPYRIGHT © 2013 MRI ARCHITECTURAL GROUP INC.

VICINITY MAP

PROJECT LOCATION



9504 SOUTH ORANGE AVENUE
ORLANDO, FLORIDA 32824



LOCATION MAP

BUILDING LOCATION



SHEET INDEX

GENERAL

C.01 COVER SHEET AND DRAWING INDEX

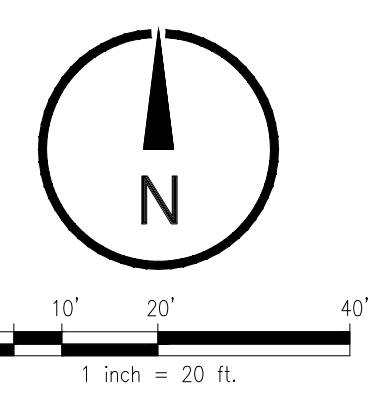
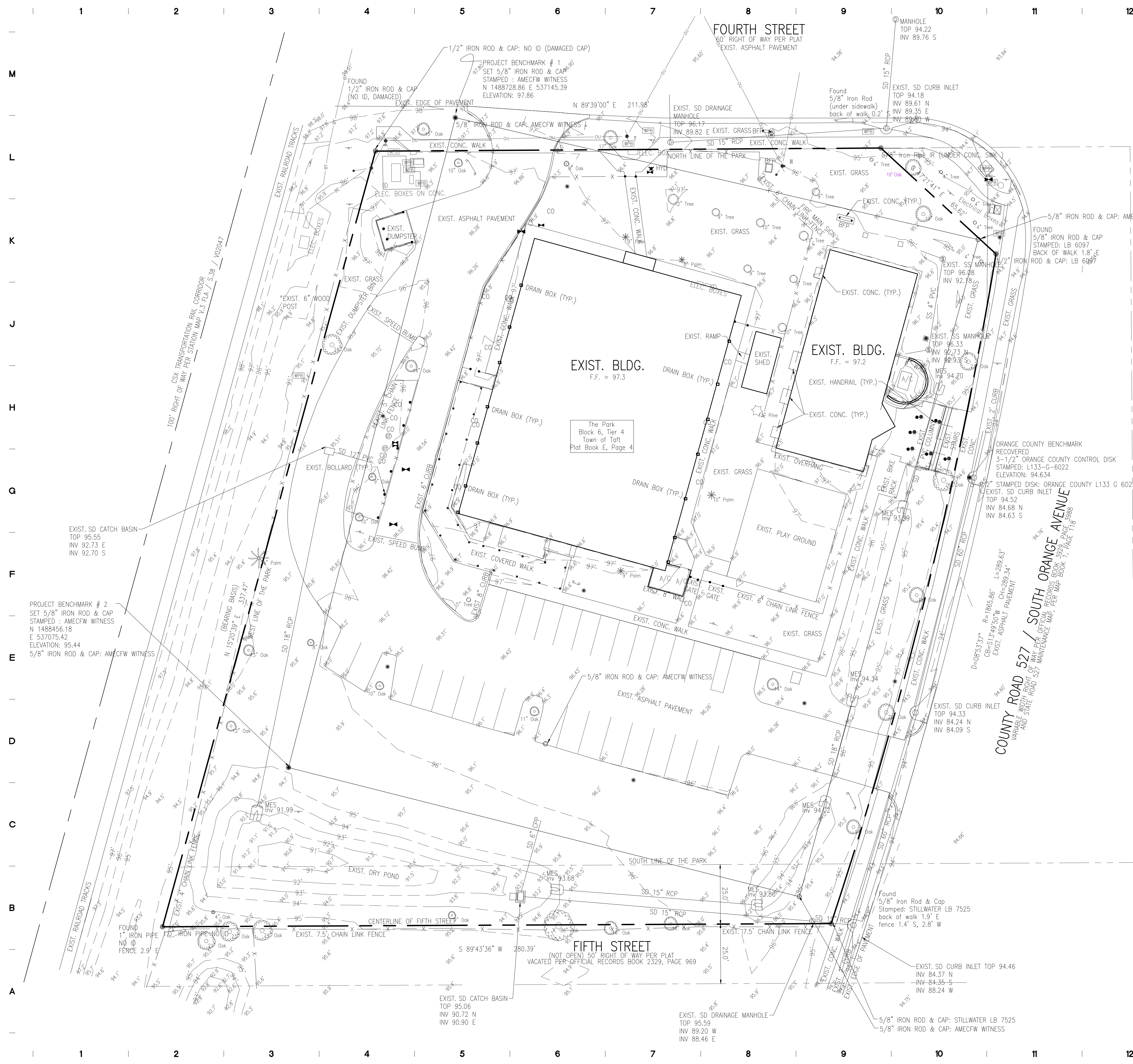
CIVIL

C001 OVERALL EXISTING SITE PLAN
C002 DEMOLITION AND EROSION CONTROL PLAN
C101 SITE DEVELOPMENT PLAN
C201 GRADING & DRAINAGE PLAN
C401 DETAIL SHEET

PROJECT TEAM



ARCHITECTURAL GROUP, INC.
5032 GODDARD AVE, ORLANDO, FL 32804
TELEPHONE: (407)245-3660 FAX: (407)245-3662
orlando@mriarchitects.com FL LIC. # AA0002264



SURVEYOR'S REPORT:

ELEVATIONS DEPICTED HEREON ARE RELATIVE TO THE NORTH AMERICAN VERTICAL DATUM OF 1988 BASED ON THE FOLLOWING ORANGE COUNTY ENGINEERING DEPARTMENT BENCHMARKS:
 BM L133-G-6022 3 1/2" ORANGE COUNTY CONTROL DISK SET IN THE TOP OF A CURB INLET LOCATED ON THE WEST SIDE OF ORANGE AVENUE AND +/- 165 FEET SOUTH OF THE CENTERLINE OF 4TH STREET. ELEVATION: 94.634
 BM L133-G-6021 CITY OF ORLANDO 3 1/2" DISC STAMPED "JULIAN JOHNSON" SET IN WEST SIDE OF 5 FT. SIDEWALK ON WEST SIDE OF ORANGE AVE AND +/- 400 FT. NORTH OF THE CENTERLINE OF 4TH STREET ELEVATION: 95.891

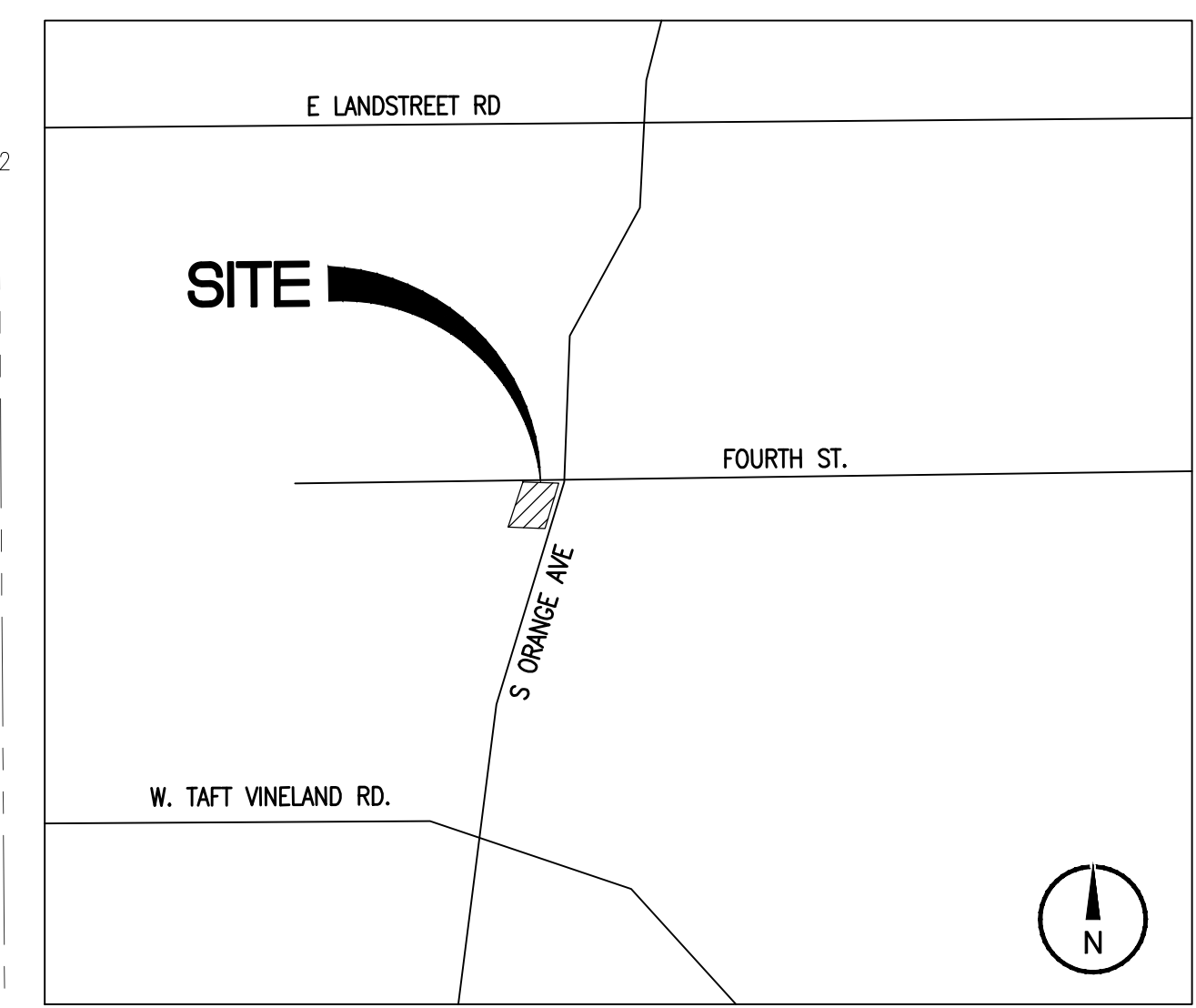
EXIST. SITE DATA

ADDRESS: 9504 S. ORANGE AVE, ORLANDO, FL 32824
 PARCEL ID: 01-24-29-8516-40-600
 ZONING: C-3
 TOTAL AREA: = 89,444 S.F. = 2.05 AC
 EXIST. BLDG. = 14,122 S.F.
 EXIST. PAVEMENT = 24,799 S.F.
 TOTAL EXIST. IMPERVIOUS AREA = 38,921 S.F. = 0.89 AC. = 43.6%
 TOTAL EXIST. PERVIOUS AREA = 1,116 AC. = 56.4%

PARKING DATA

BUILDING USE: OFFICE
 PARKING REQUIRED = 14,122 SF @ 1 SPACE/300 SF = 47 SPACES

PARKING PROVIDED:
 EXIST. STANDARD = 28 SPACES
 EXIST. HANDICAP = 2 SPACES
 TOTAL = 30 SPACES



VICINITY MAP
NOT TO SCALE

LEGEND

- EXIST.
- ASPHALT PAVEMENT
- CONCRETE WALK
- CONCRETE CURB
- SIGN
- CHAIN LINK FENCE
- WATER LINE
- SANITARY SEWER LINE
- STORM DRAIN LINE
- POWER POLE
- TREE
- GAS LINE
- UNDERGROUND TELEPHONE
- BURIED FIBER OPTIC
- OVERHEAD LINE

DRAWN BY	D. FORSYTH
CHECKED BY	M. KALAGHCHI
JOB NUMBER	1621
DATE	JULY 11, 2017
DRAWING TITLE	OVERALL EXIST. SITE PLAN
DRAWING NUMBER	C001



ARCHITECTURAL GROUP, INC.

5032 GODDARD AVE., SUITE A
 ORLANDO, FLORIDA 32804
 (407) 245-3660

FL LIC. # AA0002264
 PROJECT TITLE AND OWNERS NAME

ORANGE COUNTY TAFT HEADSTART PARKING ADDITION

9504 S. ORANGE AVENUE
 ORLANDO, FL 32824

BID/PERMIT

CONSULTANTS

SEAL AND SIGNATURE

REVISIONS

DRAWN BY

D. FORSYTH

CHECKED BY

M. KALAGHCHI

JOB NUMBER

1621

DATE

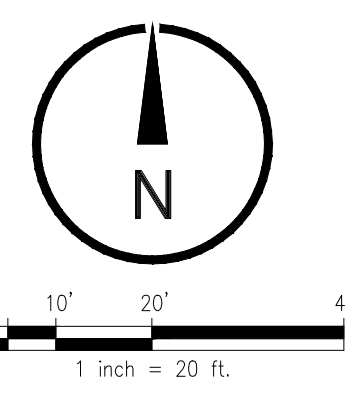
JULY 11, 2017

DRAWING TITLE

OVERALL EXIST. SITE PLAN

DRAWING NUMBER

C001



ARCHITECTURAL GROUP, INC.

5032 GODDARD AVE., SUITE A
ORLANDO, FLORIDA 32804
(407) 245-3660

FL LIC. # AA0002264
PROJECT TITLE AND OWNERS NAME

ORANGE COUNTY TAFT HEADSTART PARKING ADDITION

9504 S. ORANGE AVENUE
ORLANDO, FL 32824

BID/PERMIT

CONSULTANTS

SEAL AND SIGNATURE

REVISIONS

DRAWN BY

D. FORSYTH

CHECKED BY

M. KALAGHCHI

JOB NUMBER

1621

DATE

JULY 11, 2017

DRAWING TITLE

DEMOLITION + EROSION CONTROL PLAN

DRAWING NUMBER

C002

DEMOLITION NOTES:

1. CONTRACTOR SHALL VERIFY LOCATION OF ALL UNDERGROUND UTILITIES AND IMPROVEMENTS PRIOR TO START OF CONSTRUCTION.
2. EXISTING CONDITIONS DEPICTED ON THIS PLAN IS PROVIDED BY AMEC FOSTER WHEELER ENVIRONMENTAL & INFRASTRUCTURE, INC.
3. EXISTING TREES TO REMAIN, MUST BE PROTECTED DURING CONSTRUCTION. SEE SHEET C401

SOIL EROSION & SEDIMENTATION CONTROL NOTES:

1. ALL EROSION AND SEDIMENT CONTROL WORK SHALL CONFORM TO STANDARDS OF ORANGE COUNTY, FLORIDA AND THE SOUTH FLORIDA WATER MANAGEMENT DISTRICT.
2. EROSION AND SEDIMENT CONTROL MEASURES ARE TO BE PLACED PRIOR TO, OR AS THE FIRST STEP IN, CONSTRUCTION. SEDIMENT CONTROL PRACTICES WILL BE APPLIED AS A PERIMETER DEFENSE AGAINST ANY TRANSPORTATION OF SILT OFF THE SITE.
3. SOIL MATERIALS, FROM WORK ON THIS PROJECT SHALL BE CONTAINED, AND NOT ALLOWED TO COLLECT ON ANY OFF-PERIMETER AREAS OR IN WATERWAYS. THESE INCLUDE BOTH NATURAL AND MAN-MADE OPEN DITCHES, STREAMS, STORM DRAINS, LAKES AND PONDS.
4. ALL MUD, DIRT OR OTHER MATERIALS TRACKED OR SPILLED ONTO EXISTING STATE-COUNTY-CITY OR PRIVATE ROADS AND FACILITIES FROM THIS SITE, DUE TO CONSTRUCTION SHALL BE PROMPTLY REMOVED BY THE CONTRACTOR/BUILDER.
5. PERMANENT SOIL EROSION CONTROL MEASURES FOR ALL SLOPES, CHANNELS, DITCHES OR ANY DISTURBED LAND AREAS SHALL BE COMPLETED WITHIN (15) FIFTEEN CALENDAR DAYS AFTER FINAL GRADING, WHEN IT IS NOT POSSIBLE TO PERMANENTLY PROTECT A DISTURBED AREA IMMEDIATELY AFTER GRADING OPERATIONS, TEMPORARY EROSION CONTROL MEASURES SHALL BE INSTALLED. ALL TEMPORARY PROTECTION SHALL BE MAINTAINED UNTIL PERMANENT MEASURES ARE IN PLACE AND ESTABLISHED. A CERTIFICATE OF COMPLIANCE WILL NOT BE ISSUED UNTIL THE ABOVE REQUIREMENTS HAVE BEEN MET.
6. DAILY INSPECTIONS SHALL BE MADE BY THE CONTRACTOR TO DETERMINE THE EFFECTIVENESS OF THESE EFFORTS. ANY NECESSARY REMEDIES INCLUDING SILT REMOVAL AND CORRECTIVE ACTIONS IN EROSION PROTECTION SHALL BE PERFORMED IMMEDIATELY.

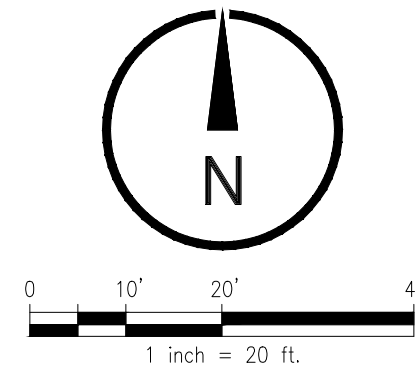
LEGEND

	EXIST.	TO BE REMOVED
ASPHALT PAVEMENT		
CONCRETE WALK		
CONCRETE CURB		
SIGN		
CHAIN LINK FENCE		
WATER LINE		
SANITARY SEWER LINE		
STORM DRAIN LINE		
POWER POLE		
TREE		
GAS LINE		
UNDERGROUND TELEPHONE		
BURIED FIBER OPTIC		

DEMOLITION + EROSION CONTROL PLAN

SCALE: 1" = 20'

FOURTH STREET
60' RIGHT OF WAY PER PLAT
EXIST. ASPHALT PAVEMENT



ARCHITECTURAL GROUP, INC.

5032 GODDARD AVE., SUITE A
ORLANDO, FLORIDA 32804
(407) 245-3660

FL LIC. # AA0002264

PROJECT TITLE AND OWNER'S NAME

**ORANGE COUNTY
TAFT HEADSTART
PARKING ADDITION**

9504 S. ORANGE AVENUE
ORLANDO, FL 32824

BID/PERMIT

CONSULTANTS

SEAL AND SIGNATURE

REVISIONS

DRAWN BY

D. FORSYTH

CHECKED BY

M. KALAGHCHI

JOB NUMBER

1621

DATE

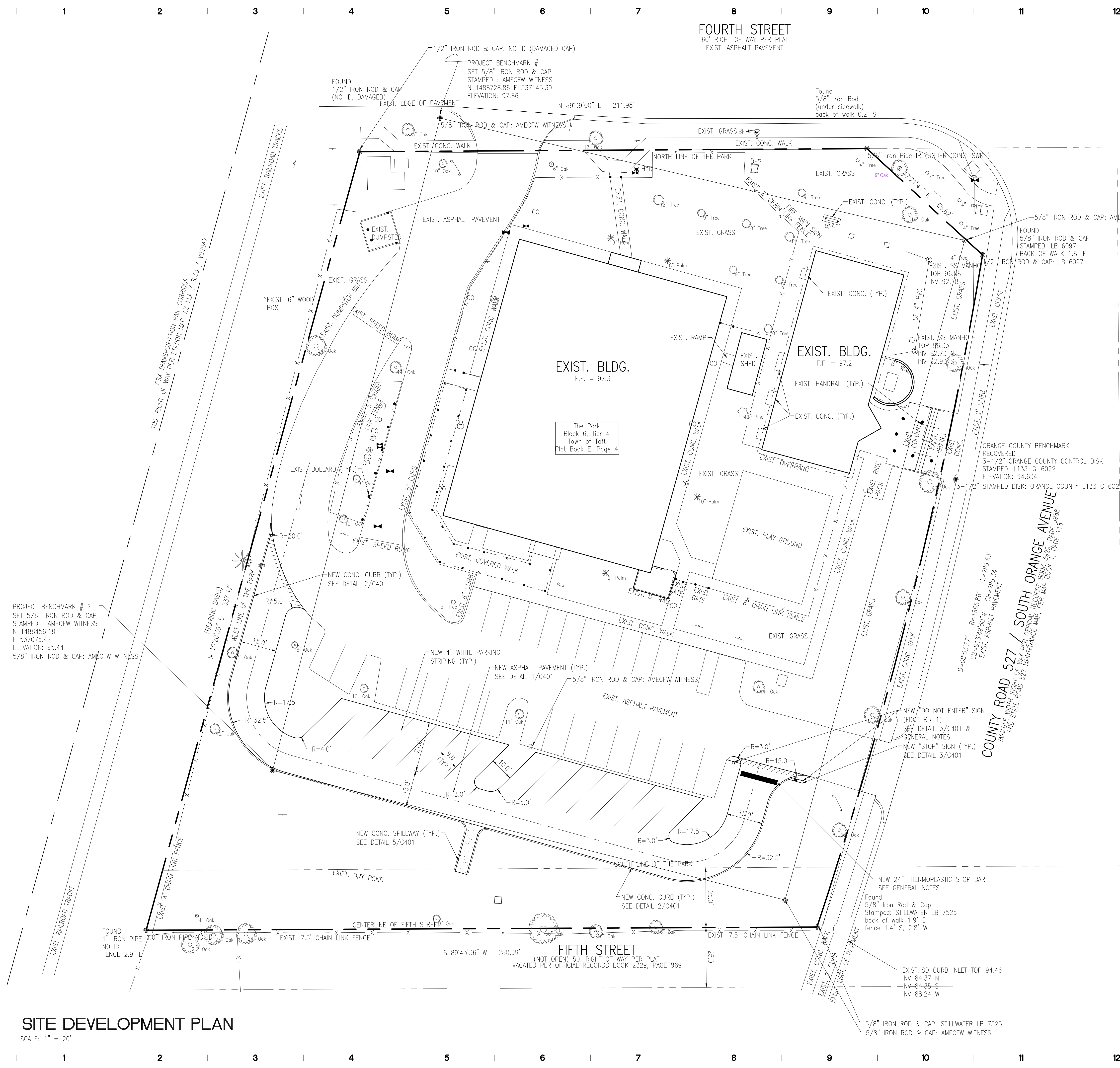
JULY 11, 2017

DRAWING TITLE

**SITE
DEVELOPMENT
PLAN**

DRAWING NUMBER

C101



GEOMETRY NOTES:

1. ALL SURVEY DATA USED AND CONDITIONS ASSUMED TO BE PRESENT IN PREPARATION OF THESE PLANS WAS PROVIDED BY AMEC FOSTER WHEELER ENVIRONMENTAL & INFRASTRUCTURE, INC. S.K. CONSORTIUM, INC. DOES NOT ASSUME RESPONSIBILITY FOR THE ACCURACY OR COMPLETENESS OF THIS DATA.
2. THE CONTRACTOR SHALL VERIFY AND LOCATE ALL VERTICAL AND HORIZONTAL CONTROL POINTS PRIOR TO CONSTRUCTION. IF ANY DISCREPANCIES SHOULD BE FOUND, THE CONTRACTOR SHALL NOTIFY THE ENGINEER AND SURVEYOR OF THE CONDITION IN WRITING PRIOR TO COMMENCING HIS CONSTRUCTION ACTIVITIES.
3. ALL PAVEMENT OFFSETS, RADII AND DIMENSIONS SHOWN ARE TO PROPOSED EDGE OF PAVEMENT, UNLESS OTHERWISE NOTED.
4. THE CONTRACTOR SHALL STAKE ALL IMPROVEMENTS USING THE GEOMETRIC DATA PROVIDED. IT IS THE CONTRACTORS SOLE RESPONSIBILITY TO COMPLETELY STAKE AND CHECK ALL IMPROVEMENTS TO ENSURE ADEQUATE POSITIONING, BOTH HORIZONTAL AND VERTICAL, PRIOR TO THE INSTALLATION OF ANY IMPROVEMENTS.
5. THE CONTRACTOR SHALL REFERENCE AND RESTORE PROPERTY CORNERS AND LAND MARKERS DISTURBED DURING CONSTRUCTION (UNDER THE DIRECTION OF A FLORIDA REGISTERED LAND SURVEYOR).

GENERAL NOTES:

1. TRAFFIC MARKINGS
 - A. ALL DRIVEWAYS EXITING ONTO ANY PUBLIC OR PRIVATE STREET MUST HAVE A TRAFFIC CONTROL DEVICE (30" STOP SIGN MOUNTED 2' ABOVE THE PEDESTRIAN VEHICLE TRAVEL WAY (MEASURED FROM BOTTOM OF SIGN) AND THROUGHOUT THE SITE AS NECESSARY FOR SAFETY.
 - B. ALL SIGN INSTALLATIONS SHALL COMPLY WITH SIZE, LOCATION AND HEIGHT (7') AS OUTLINED IN THE "MUTCD."
 - C. PAVEMENT MARKINGS
 1. PARKING LOT PAVEMENT MARKINGS SHALL BE WHITE (DIRECTIONAL ARROWS, STOP BARS, LINES DESIGNATING PARKING SPACES AND HANDICAPPED PARKING SYMBOLS).
 2. ALL HANDICAPPED PARKING SPACES MUST BE LEGALLY SIGNED WITH ONE REGULATION HANDICAP SIGN AND ONE BLUE PAVEMENT MARKING SYMBOL PER SPACE.
 - E. A 24" STOP BAR SHALL BE PROVIDED AT ALL POINTS OF EGRESS IN CONFORMANCE WITH FDOT #17346, DRAWING #3 OF 14.
 - F. ARROWS AND DIVIDING LINES IN CONFORMANCE WITH FDOT #17346, DRAWING 1 OF 14.
2. THE CONTRACTOR SHALL MAINTAIN A SET OF "AS-BUILT" PLANS ON-SITE AND SUBMIT THESE PLANS TO THE ENGINEER-OF-RECORD UPON COMPLETION.
3. ALL AREA OF THE SUBJECT PROPERTY WILL BE MAINTAINED BY THE OWNER.

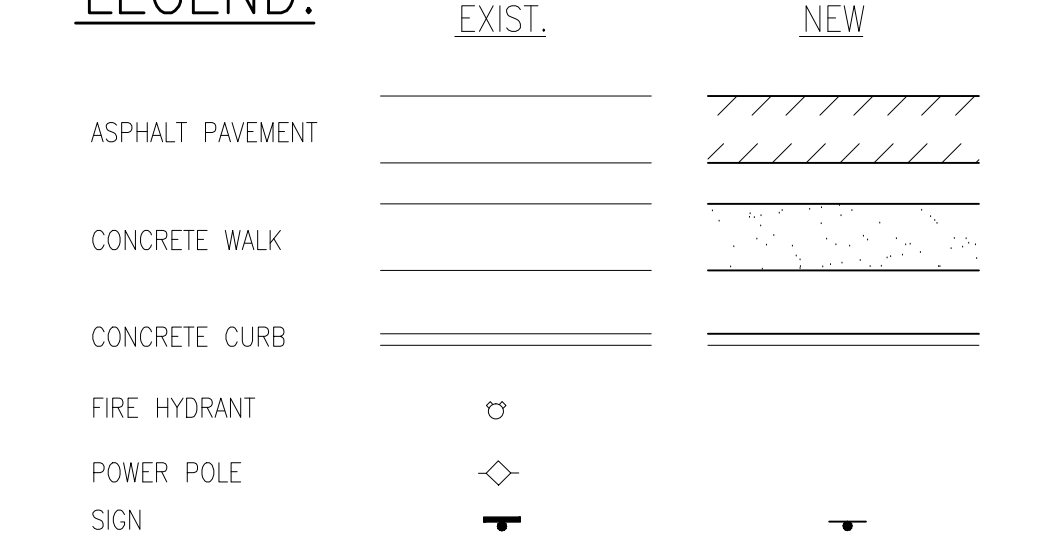
SITE DATA

ADDRESS: 9504 S. ORANGE AVE., ORLANDO, FL 32824
 PARCEL ID: 01-24-29-8516-40-600
 ZONING: C-3
 TOTAL AREA = 89,444 S.F. = 2.05 AC
 EXIST. BLDG. = 14,122 S.F.
 EXIST. PAVEMENT = 24,799 S.F.
 NEW PAVEMENT AREA = 7,918 S.F.
 TOTAL NEW IMPERVIOUS AREA = 46,839 S.F. = 1.07 AC. = 52.4%
 TOTAL NEW PERVIOUS AREA = 0.98 AC. = 47.6%

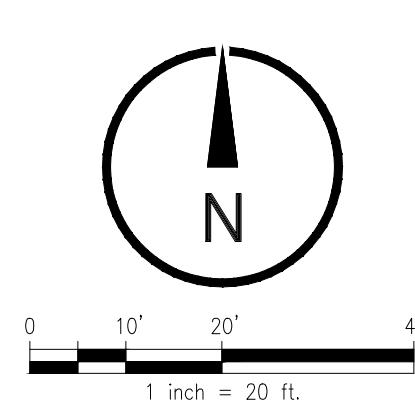
PARKING DATA

BUILDING USE: OFFICE
 PARKING REQUIRED = 14,122 SF @ 1 SPACE/300 SF = 47 SPACES
 PARKING PROVIDED:
 EXIST. STANDARD = 28 SPACES
 EXIST. HANDICAP = 2 SPACES
 NEW STANDARD = 14 SPACES
 TOTAL = 34 SPACES

LEGEND:



SITE DEVELOPMENT PLAN
SCALE: 1" = 20'



ARCHITECTURAL GROUP, INC.

5032 GODDARD AVE., SUITE A
ORLANDO, FLORIDA 32804
(407) 245-3660

FL LIC. # AA0002264
PROJECT TITLE AND OWNERS NAME

ORANGE COUNTY TAFT HEADSTART PARKING ADDITION

9504 S. ORANGE AVENUE
ORLANDO, FL 32824

BID/PERMIT

CONSULTANTS

SEAL AND SIGNATURE

REVISIONS

DRAWN BY

D. FORSYTH

CHECKED BY

M. KALAGHCHI

JOB NUMBER

1621

DATE

JULY 11, 2017

DRAWING TITLE

GRADING + DRAINAGE PLAN

DRAWING NUMBER

C201

SHEET OF

COPYRIGHT © 2011 MRI ARCHITECTURAL GROUP, INC.

GENERAL NOTES:

- ALL DISTURBED AREAS SHALL BE SODDED.
- SEE SHEET C002 FOR EROSION & SEDIMENTATION CONTROL.

LEGEND

FINISH GRADE	EXIST. 98.30	NEW 97.70
FLOW PATTERN		
CONTOUR	100	100
STORM DRAIN INLET		■
MITERED END SECTION		■
STORM DRAIN LINE	SD	SD
STORM MANHOLE WITH WEIR		●

GRADING + DRAINAGE PLAN

SCALE: 1" = 20'



ARCHITECTURAL GROUP, INC.

5032 GODDARD AVE., SUITE A
ORLANDO, FLORIDA 32804
(407) 245-3660

FL LIC. # AA0002264

PROJECT TITLE AND OWNERS NAME

ORANGE COUNTY
TAFT HEADSTART
PARKING ADDITION

9504 S. ORANGE AVENUE
ORLANDO, FL 32824

BID/PERMIT

CONSULTANTS

SEAL AND SIGNATURE

REVISIONS

DRAWN BY

D. FORSYTH

CHECKED BY

M. KALAGHCHI

JOB NUMBER

1621

DATE

JULY 11, 2017

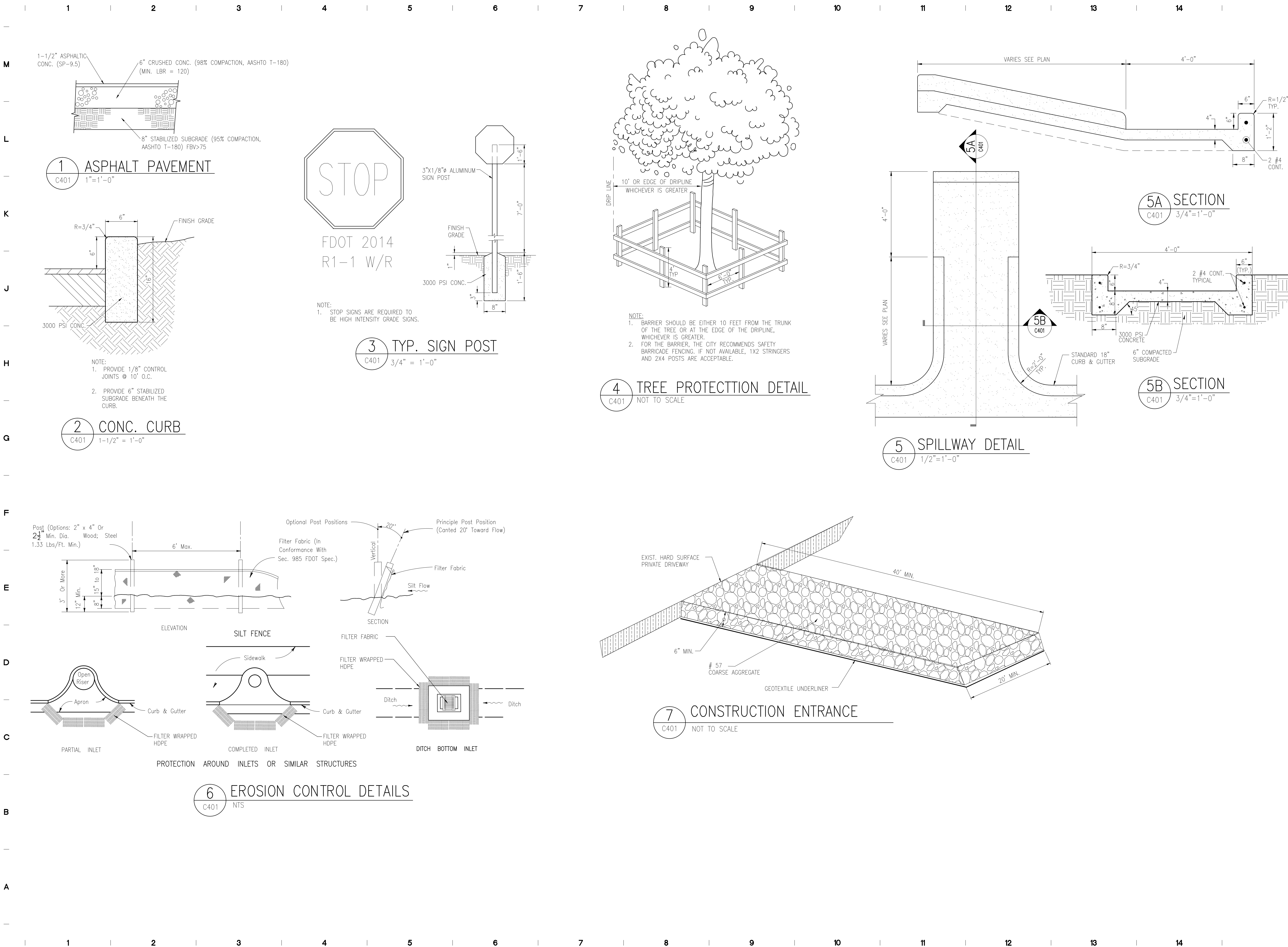
DRAWING TITLE

SITE DETAILS

DRAWING NUMBER

C401

SHEET OF
COPYRIGHT © 2011 MRI ARCHITECTURAL GROUP, INC.



M
L
K
J
H
G
F
E
D
C
B
A

1 | 2 | 3 | 4 | 5 | 6 | 7 | 8 | 9 | 10 | 11 | 12 | 13 | 14

1 | 2 | 3 | 4 | 5 | 6 | 7 | 8 | 9 | 10 | 11 | 12 | 13 | 14