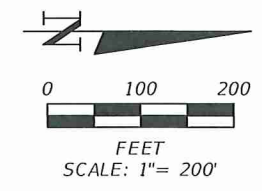
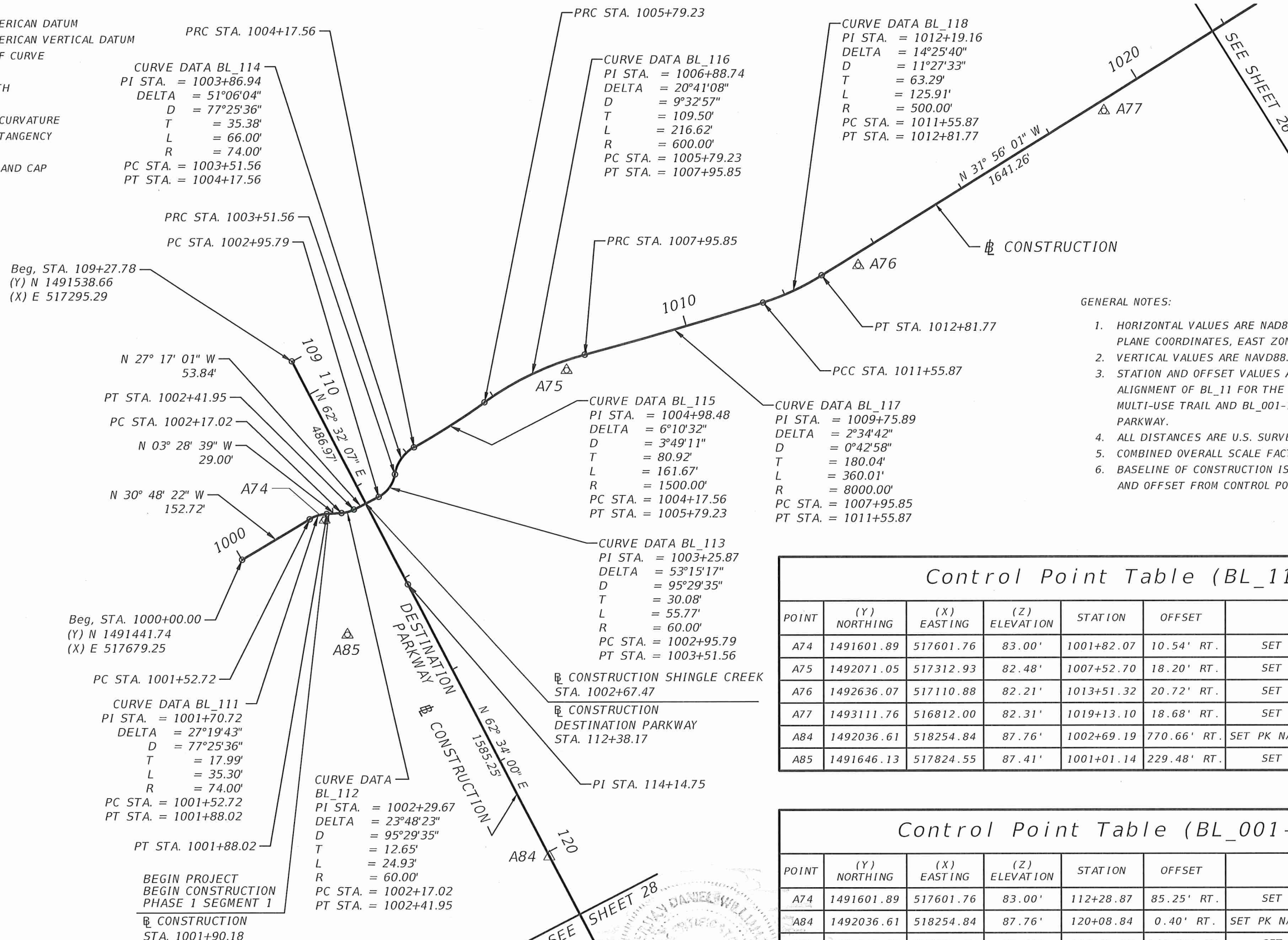


LEGEND:

- NAD = NORTH AMERICAN DATUM
- NAVD = NORTH AMERICAN VERTICAL DATUM
- D = DEGREE OF CURVE
- T = TANGENT
- L = ARC LENGTH
- R = RADIUS
- PC = POINT OF CURVATURE
- PT = POINT OF TANGENCY
- STA. = STATION
- I.R.C. = IRON ROD AND CAP
- ▬ = BASELINE



- GENERAL NOTES:
- HORIZONTAL VALUES ARE NAD83(2011) FLORIDA STATE PLANE COORDINATES, EAST ZONE.
  - VERTICAL VALUES ARE NAVD88.
  - STATION AND OFFSET VALUES ARE RELATED TO THE ALIGNMENT OF BL\_11 FOR THE PROPOSED SHINGLE CREEK MULTI-USE TRAIL AND BL\_001-1B FOR DESTINATION PARKWAY.
  - ALL DISTANCES ARE U.S. SURVEY FEET.
  - COMBINED OVERALL SCALE FACTOR IS: 0.99996503
  - BASELINE OF CONSTRUCTION IS MONUMENTED BY STATION AND OFFSET FROM CONTROL POINTS.

POINT	(Y) NORTHING	(X) EASTING	(Z) ELEVATION	STATION	OFFSET	DESCRIPTION
A74	1491601.89	517601.76	83.00'	1001+82.07	10.54' RT.	SET 5/8 IRC "WBQ TRAV"
A75	1492071.05	517312.93	82.48'	1007+52.70	18.20' RT.	SET 5/8 IRC "WBQ TRAV"
A76	1492636.07	517110.88	82.21'	1013+51.32	20.72' RT.	SET 5/8 IRC "WBQ TRAV"
A77	1493111.76	516812.00	82.31'	1019+13.10	18.68' RT.	SET 5/8 IRC "WBQ TRAV"
A84	1492036.61	518254.84	87.76'	1002+69.19	770.66' RT.	SET PK NAIL AND DISC "WBQ TRAV"
A85	1491646.13	517824.55	87.41'	1001+01.14	229.48' RT.	SET 5/8 IRC "WBQ TRAV"

POINT	(Y) NORTHING	(X) EASTING	(Z) ELEVATION	STATION	OFFSET	DESCRIPTION
A74	1491601.89	517601.76	83.00'	112+28.87	85.25' RT.	SET 5/8 IRC "WBQ TRAV"
A84	1492036.61	518254.84	87.76'	120+08.84	0.40' RT.	SET PK NAIL AND DISC "WBQ TRAV"
A85	1491646.13	517824.55	87.41'	114+47.03	148.72' RT.	SET 5/8 IRC "WBQ TRAV"

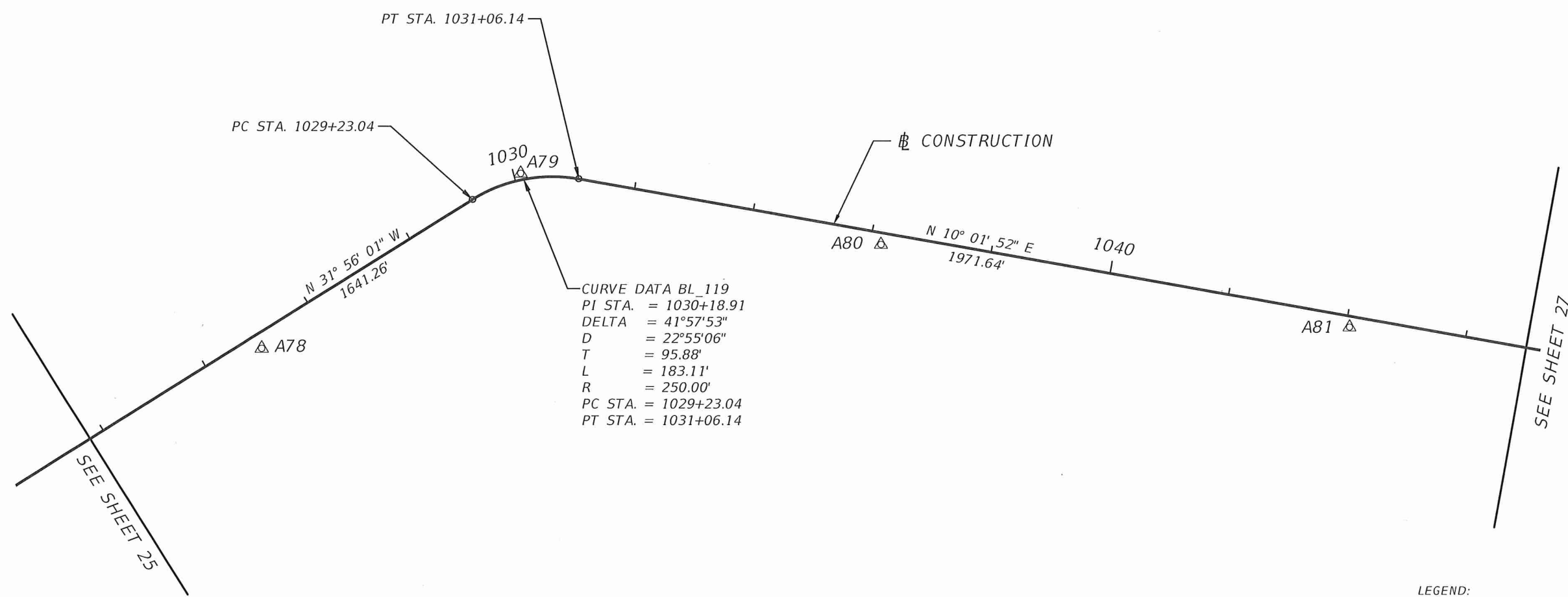
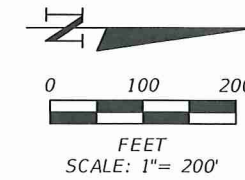
REVISIONS			
DATE	DESCRIPTION	DATE	DESCRIPTION

HERMAN DANIEL WILLIAMS III, P.S.M. No.6227  
**WBO** Design & Engineering  
 201 N. Magnolia Ave. Suite 200  
 Orlando, FL 32801  
 Phone 407.839.4300  
 Fax 407.839.1621  
 CERTIFICATE OF AUTHORIZATION NO.7963

**ORANGE COUNTY GOVERNMENT**  
 ORANGE COUNTY DEPARTMENT OF PUBLIC WORKS  
 ENGINEERING DIVISION  
 4200 SOUTH JOHN YOUNG PARKWAY  
 ORLANDO, FLORIDA 32839  
 (407) 836-7900

**SURVEY CONTROL SHEETS**  
 PHASE 1 SEGMENT 1

SHEET NO.  
 25







CURVE DATA BL\_119  
 PI STA. = 1030+18.91  
 DELTA = 41°57'53"  
 D = 22°55'06"  
 T = 95.88'  
 L = 183.11'  
 R = 250.00'  
 PC STA. = 1029+23.04  
 PT STA. = 1031+06.14

- LEGEND:
- NAD = NORTH AMERICAN DATUM
  - NAVD = NORTH AMERICAN VERTICAL DATUM
  - D = DEGREE OF CURVE
  - T = TANGENT
  - L = ARC LENGTH
  - R = RADIUS
  - PC = POINT OF CURVATURE
  - PT = POINT OF TANGENCY
  - STA. = STATION
  - I.R.C. = IRON ROD AND CAP
  - ⊕ = BASELINE

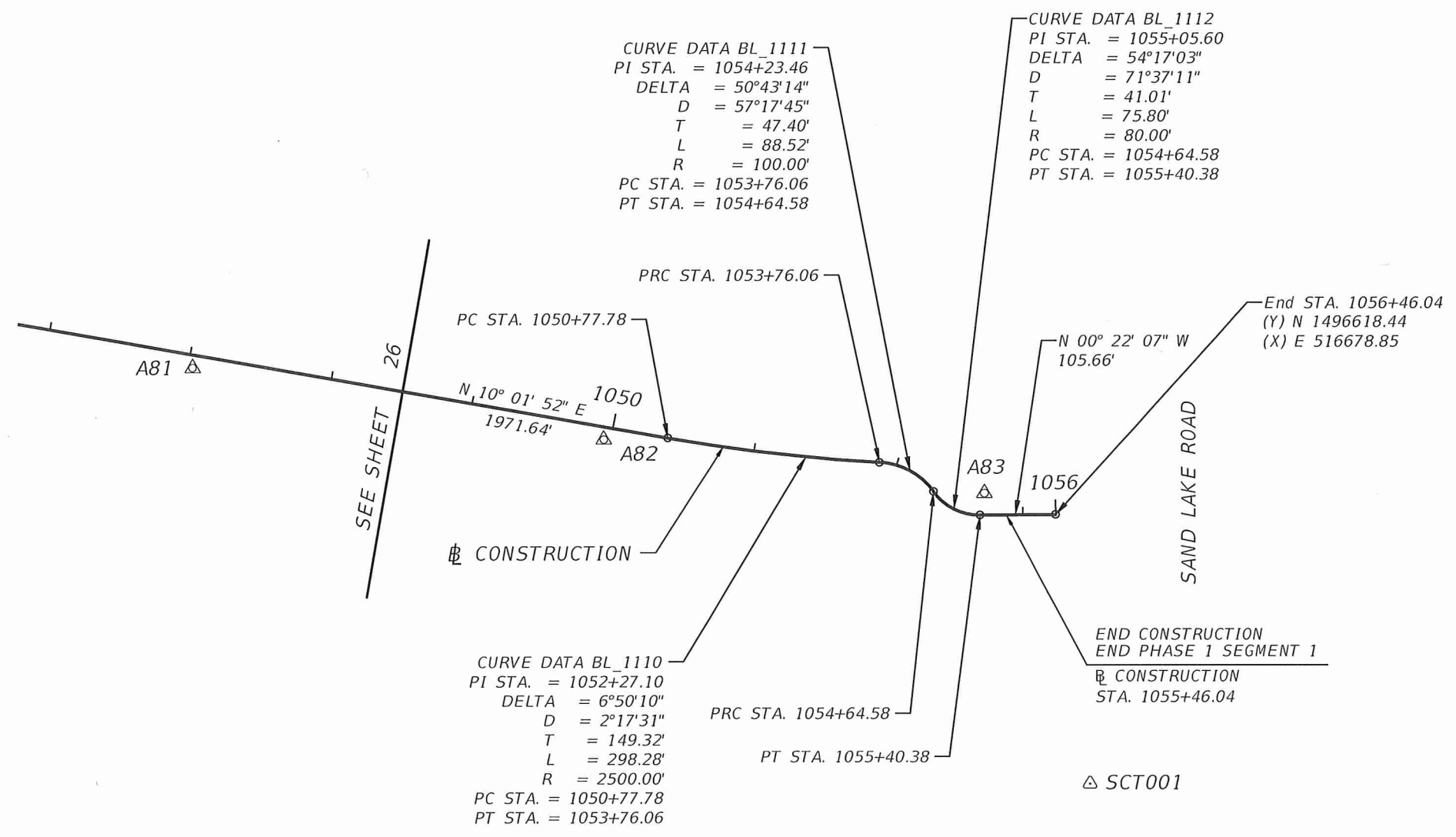
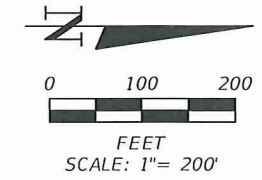
**Control Point Table (BL\_11)**

POINT	(Y) NORTHING	(X) EASTING	(Z) ELEVATION	STATION	OFFSET	DESCRIPTION
A78	1493608.31	516508.64	82.15'	1024+94.96	23.87' RT.	SET 5/8 IRC "WBQ TRAV"
A79	1494038.39	516218.59	81.43'	1030+11.41	10.93' LT.	SET 5/8 IRC "WBQ TRAV"
A80	1494635.37	516336.14	82.24'	1036+17.95	19.34' RT.	SET 5/8 IRC "WBQ TRAV"
A81	1495411.97	516472.12	82.01'	1044+06.37	17.97' RT.	SET 5/8 IRC "WBQ TRAV"

SEE SHEET 25 FOR SURVEYOR'S NOTES

REVISIONS		HERMAN DANIEL WILLIAMS III, P.S.M. No. 8227  	 201 N. Magnolia Ave. Suite 200 Orlando, FL 32801 Phone 407.839.4300 Fax 407.839.1621	 ORANGE COUNTY DEPARTMENT OF PUBLIC WORKS ENGINEERING DIVISION 4200 SOUTH JOHN YOUNG PARKWAY ORLANDO, FLORIDA 32839 (407) 836-7900	<b>SURVEY CONTROL SHEETS</b> <b>PHASE 1 SEGMENT 1</b>	SHEET NO.
DATE	DESCRIPTION					DATE

CERTIFICATE OF AUTHORIZATION NO.7963

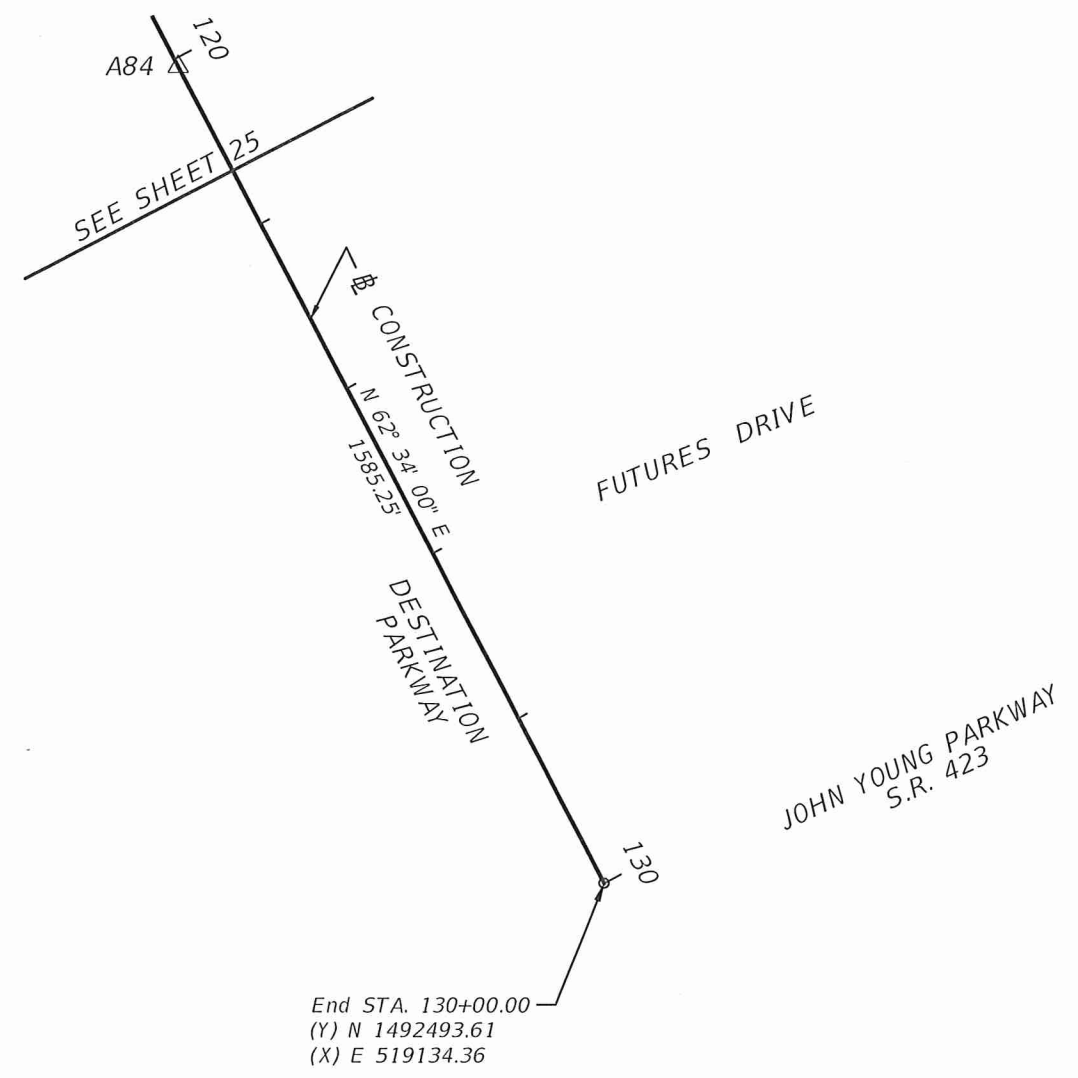
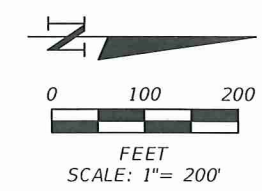


- LEGEND:
- NAD = NORTH AMERICAN DATUM
  - NAVD = NORTH AMERICAN VERTICAL DATUM
  - D = DEGREE OF CURVE
  - T = TANGENT
  - L = ARC LENGTH
  - R = RADIUS
  - PC = POINT OF CURVATURE
  - PT = POINT OF TANGENCY
  - STA. = STATION
  - I.R.C. = IRON ROD AND CAP
  - PMON = POURED MONUMENT
  - SCT = SHINGLE CREEK TRAIL
  - B = BASELINE

POINT	(Y) NORTHING	(X) EASTING	(Z) ELEVATION	STATION	OFFSET	DESCRIPTION
A82	1495987.05	516573.42	80.82'	1049+90.29	17.55' RT.	SET 5/8 IRC "WBQ TRAV"
A83	1496518.84	516648.65	82.62'	1055+46.64	30.85' LT.	SET 5/8 IRC "WBQ TRAV"
SCT001	1496666.23	517055.28	87.05'	OUT OF CHAIN		SET ALUMINUM DISK IN PMON "SCT001"
SCT002	1496656.65	515806.35	86.37'	1054+01.67	844.76' LT.	SET ALUMINUM DISK IN PMON "SCT002"

SEE SHEET 25 FOR SURVEYOR'S NOTES

REVISIONS		HERMAN DANIEL WILLIAMS III, P.S.M. No.6227		201 N. Magnolia Ave. Suite 200 Orlando Fl. 32801 Phone 407.839.4300 Fax 407.839.1621	ORANGE COUNTY DEPARTMENT OF PUBLIC WORKS ENGINEERING DIVISION 4200 SOUTH JOHN YOUNG PARKWAY ORLANDO, FLORIDA 32839 (407) 836-7900	SURVEY CONTROL SHEETS PHASE 1 SEGMENT 1	SHEET NO.
DATE	DESCRIPTION	DATE	DESCRIPTION				27
				CERTIFICATE OF AUTHORIZATION NO.7963			



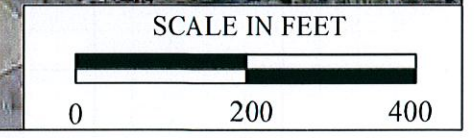
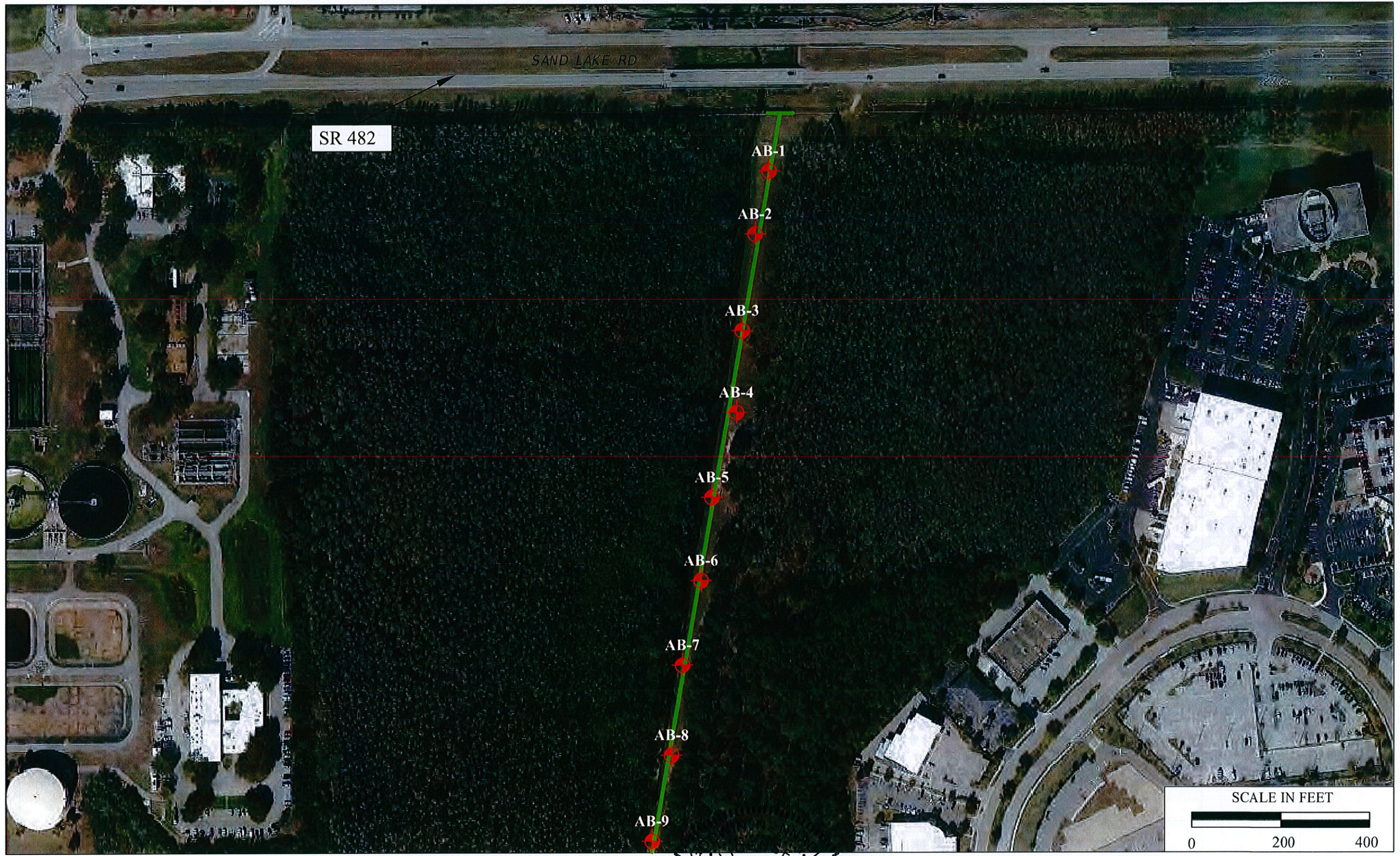
- LEGEND:
- NAD = NORTH AMERICAN DATUM
  - NAVD = NORTH AMERICAN VERTICAL DATUM
  - D = DEGREE OF CURVE
  - T = TANGENT
  - L = ARC LENGTH
  - R = RADIUS
  - PC = POINT OF CURVATURE
  - PT = POINT OF TANGENCY
  - STA. = STATION
  - I.R.C. = IRON ROD AND CAP
  - BL = BASELINE

Control Point Table (BL_001-1B)						
POINT	(Y) NORTHING	(X) EASTING	(Z) ELEVATION	STATION	OFFSET	DESCRIPTION
A84	1492036.61	518254.84	87.76'	120+08.84	0.40' RT.	SET PK NAIL AND DISC "WBQ TRAV"

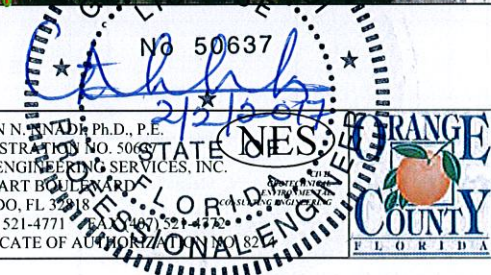
*H. Williams*

SEE SHEET 25 FOR SURVEYOR'S NOTES

REVISIONS				HERMAN DANIEL WILLIAMS III, P.S.M. No. 6227 201 N. Magnolia Ave. Suite 200 Orlando FL 32801 Phone 407.839.4300 Fax 407.839.1621	ORANGE COUNTY DEPARTMENT OF PUBLIC WORKS ENGINEERING DIVISION 4200 SOUTH JOHN YOUNG PARKWAY ORLANDO, FLORIDA 32839 (407) 836-7900	SURVEY CONTROL SHEETS PHASE 1 SEGMENT 1	SHEET NO.  28
DATE	DESCRIPTION	DATE	DESCRIPTION				



**LEGEND**  
**AB-1**  Approximate Auger Boring Location



DATE	BY	DESCRIPTION

NAMES	DATES
Drawn by: JW	05-20-14
Checked by: GNN	05-20-14
Designed by: N/A	N/A
Checked by: N/A	N/A
Approved by: GNN	

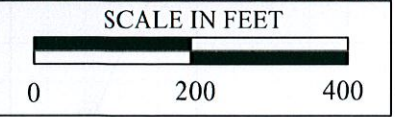
GODWIN N. NADEAU, Ph.D., P.E.  
 FL REGISTRATION NO. 50637  
 NADIC ENGINEERING SERVICES, INC.  
 601 N. HART BULEVARD  
 ORLANDO, FL 32818  
 PH (407) 521-4771 FAX (407) 521-4772  
 CERTIFICATE OF AUTHORITY NO. 10182

ORANGE COUNTY PUBLIC WORKS	
COUNTY	PROJECT NO.
ORANGE	Y12-819

FIGURE 5A: Boring Location Map		SHEET NO. 29
PROJECT NAME: SHINGLE CREEK MULTI-USE TRAIL PHASE I-SEGMENT I		

Z:\Roadways\kenna\WBQ\_Orange\_C\Shingle Creek Corridor Study\Acad

Z:\Roadways\kenna\WBQ\_Orange\_C\Shingle Creek Corridor Study\Acad



**LEGEND**  
**AB-9** Approximate Auger Boring Location



ORANGE COUNTY PUBLIC WORKS  
 COUNTY PROJECT NO.  
 ORANGE Y12-819

FIGURE 5B:  
 Boring Location Map  
 PROJECT NAME:  
 SHINGLE CREEK MULTI-USE TRAIL  
 PHASE I-SEGMENT I

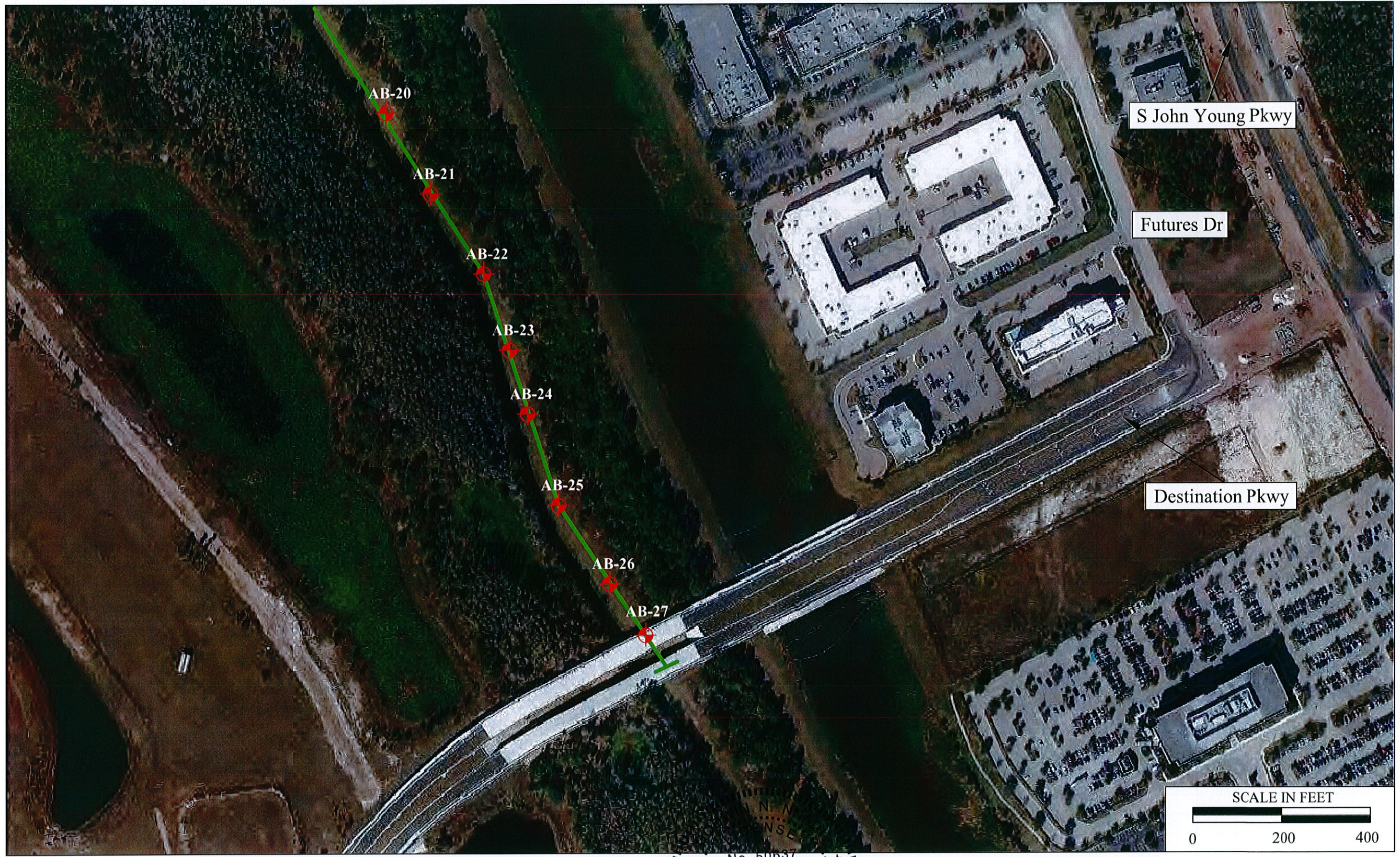
SHEET NO.  
 30

REVISIONS					
DATE	BY	DESCRIPTION	DATE	BY	DESCRIPTION

NAMES	DATES
Drawn by: JW	05-20-14
Checked by: GNN	05-20-14
Designed by: N/A	N/A
Checked by: N/A	N/A
Approved by: GNN	

GODWIN NNADI, Ph.D., P.E.  
 FL REGISTRATION NO. 50637  
 NADI ENGINEERING SERVICES, INC.  
 601 N. LAUREL BOULEVARD  
 ORLANDO, FL 32804  
 PH (407) 521-4444  
 CERTIFICATE OF PROFESSIONAL ENGINEERING

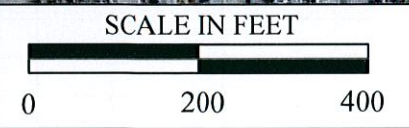
Z:\Roadways\Kenna WBO\_Orange\_C\Shingle Creek Corridor Study\Acad




S John Young Pkwy

Futures Dr

Destination Pkwy



**AB-20**  
 **Approximate Auger Boring Location**

**LEGEND**  
**AB-20**  
 **Approximate Auger Boring Location**

**FIGURE 5C:**  
**Boring Location Map**

**PROJECT NAME:**  
 SHINGLE CREEK MULTI-USE TRAIL  
 PHASE I-SEGMENT I

**SHEET NO.**  
 31

REVISIONS					
DATE	BY	DESCRIPTION	DATE	BY	DESCRIPTION

NAMES	DATES
Drawn by: JW	05-20-14
Checked by: GNN	05-20-14
Designed by: N/A	N/A
Checked by: N/A	N/A
Approved by: GNN	

GODWIN N. NADIC, P.E.  
 FL REGISTRATION NO. 50637  
 NADIC ENGINEERING SERVICES, INC.  
 601 N. HART BOULEVARD  
 ORLANDO, FL 32818  
 PH (407) 521-4771 FAX (407) 521-4772  
 CERTIFICATE OF AUTHORIZATION NO. 831

**ORANGE COUNTY PUBLIC WORKS**  
 COUNTY: ORANGE  
 PROJECT NO.: Y12-819

7: Roadways\Ikenma\WBO\_Orange\_CV\Shingle Creek Corridor Study\Acad  
 DATE: 09/05/13  
 ORIGINATOR: IAU  
 CHECKED CORRECTED (Yellow Change) (Red)  
 CONCURRENCE, ORIGINATOR (Red Check)  
 CHANGE INCORPORATION (Blue Highlight)  
 VERIFICATION CHECKER  
 GREEN CHECK OR CHECK & REMARK INCORRECT  
 REMARK INCORPORATION (Blue Highlight)  
 CHECKED CORRECTED (Green Change) (Red)  
 DATE: 03/20/15  
 GNN  
 IAU  
 GNN  
 DATE: 03/20/15  
 GNN  
 IAU  
 GNN  
 DATE: 03/20/15  
 GNN  
 IAU  
 GNN

NES PROJECT NO.: R12028  
 PROJECT DESCRIPTION: SHINGLE CREEK BIKE TRAIL (PHASE 1)  
 SUBMITTED BY: NES

# NADIC ENGINEERING SERVICES, INC

## ROADWAY SOIL SURVEY

### REPORT OF TESTS

QUADRANGLE: LAKE JESSAMINE, FLA  
 SECTIONS: 5 & 32 TOWNSHIP: 24 SOUTH RANGE: 29 EAST  
 SURVEY BEGINS: STA. 1001+90  
 SURVEY ENDS: STA. 1055+77  
 DATE REPORTED: SEPTEMBER 2013

STRATUM NO.	ORGANIC CONTENT		MOISTURE CONTENT		SIEVE ANALYSIS RESULTS (% PASSING)					ATTERBERG LIMITS (%)			AASHTO GROUP	DESCRIPTION	CORROSION TEST RESULTS					SUBSTRUCTURE ENVIRONMENTAL CLASSIFICATION		
	No. OF TESTS	% ORGANIC	No. OF TESTS	% MOISTURE CONTENT	No. OF TESTS	% PASSING 10 MESH	% PASSING 40 MESH	% PASSING 60 MESH	% PASSING 100 MESH	% PASSING 200 MESH	No. OF TESTS	LIQUID LIMIT			PLASTICITY INDEX	No. OF TESTS	pH	RESISTIVITY OHM-CM	CHLORIDES PPM	SULFATE PPM	CONCRETE	STEEL
1	1	2	4	16-27	4	100	99-100	94-95	54-61	7-8	-	-	-	A-3	BROWN TO LIGHT BROWN FINE SAND TO FINE SAND WITH CLAY/SILT	-	-	-	-	-	-	-
2	-	-	7	10-54	7	100	91-100	91-97	45-71	11-27	2	23	1-3	A-2-6	BROWN TO GRAY CLAYEY SAND	2	7.05-5.86	14,180-29,150	360-905	1,130-1,690	EA	EA-MA
3	-	-	1	19	1	100	99	93	52	11	-	-	-	A-2-4	DARK BROWN TO ORANGISH BROWN SILTY SAND	-	-	-	-	-	-	-
4	3	7-16	2	33-47	1 (FULL) 1 (-200)	100	94	89	86	50-82	-	-	-	A-8	LIGHT BROWN TO DARK BROWN ORGANIC SILTY SAND	-	-	-	-	-	-	-

- NOTES:
- (1) STRATA BOUNDARIES ARE APPROXIMATE AND REPRESENT SOIL STRATA AT EACH TEST HOLE LOCATION ONLY. ANY STRATUM CONNECTING LINES SHOWN ARE FOR ESTIMATING EARTHWORK ONLY AND DO NOT INDICATE ACTUAL STRATUM LIMITS. SUBSURFACE VARIATIONS BETWEEN BORINGS SHOULD BE ANTICIPATED AS INDICATED IN FDOT SECTION 2-4. FOR FURTHER DETAILS SEE FDOT STANDARD SPECIFICATIONS SECTION 120-3.
  - (2) SOIL PARAMETER NOT TESTED DENOTED AS "-" ABOVE.
  - (3) INDICATES WATER TABLE ENCOUNTERED AT THE TIME OF SURVEY.  
 INDICATES ESTIMATED SEASONAL HIGH WATER LEVEL  
 GNE INDICATES THAT GROUNDWATER WAS NOT ENCOUNTERED AT THE TIME OF EXPLORATION
  - (4) REMOVAL OF PLASTIC MATERIAL OCCURING WITHIN THE ROADWAY SHALL BE ACCOMPLISHED IN ACCORDANCE WITH INDEX No. 500 UNLESS OTHERWISE STATED IN THE PLANS. THE MATERIAL UTILIZED IN EMBANKMENT CONSTRUCTION SHALL BE IN ACCORDANCE WITH FDOT STANDARD INDEX No. 505.
  - (5) STRATA 1 AND 3 SHALL BE TREATED AS SELECT (S) MATERIALS PER INDICES NO. 505.
  - (6) STRATUM 2 SHALL BE TREATED AS PLASTIC (P) MATERIALS PER INDICES NOS. 500 & 505.
  - (8) ENVIRONMENTAL CLASSIFICATION  
 MA INDICATES MODERATELY AGGRESSIVE  
 EA INDICATES EXTREMELY AGGRESSIVE

ORANGE COUNTY	REVISIONS			 <b>Civil Geotechnical Environmental Consulting Engineering</b>	ENGINEER OF RECORD: GODWIN N. NNADI, Ph. D., P.E. Florida Registration #50637 601 N. Hart Boulevard ORLANDO, FLORIDA 32818	SEAL: No 50637 	ORANGE COUNTY PUBLIC WORKS COUNTY PROJECT No. ORANGE Y12-819	SHEET TITLE: ROADWAY SOIL SURVEY	Sheet No. 32
	DATE	BY	DESCRIPTION					PROJECT NAME: SHINGLE CREEK BIKE TRAIL - PHASE I SEGMENT I	



Boring No.:  
Station & Offset:  
Northing:  
Easting:  
Elevation:  
Date Drilled:

**AB-1**  
1054+20, 9 LT  
1496418.5  
516609.9  
83.7'  
07/28/13

**AB-2**  
1052+23, 9 RT  
1496219.3  
516601.3  
82.6'  
07/28/13

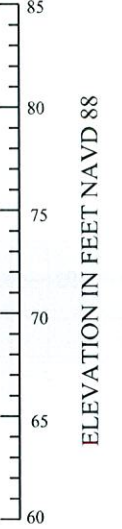
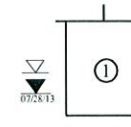
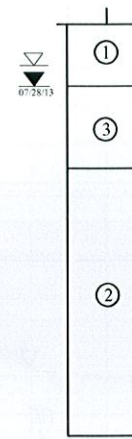
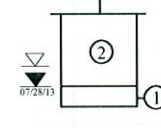
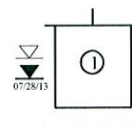
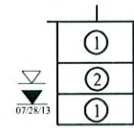
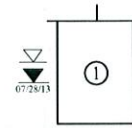
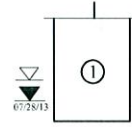
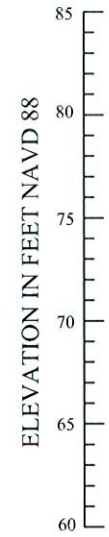
**AB-3**  
1050+26, 2 LT  
1496025.6  
516559.9  
82.4'  
07/28/13

**AB-4\***  
1048+30, 18 RT  
1495829.6  
516545.6  
82.2'  
07/28/13

**AB-5\***  
1046+35, 2 RT  
1495640.3  
516496.5  
82.7'  
07/28/13

**AB-6**  
1044+39, 13 RT  
1495444.7  
516472.7  
83.1'  
07/31/13

**AB-7**  
1042+42, 0  
1495253.5  
516425.4  
83.2'  
07/28/13



Boring No.:  
Station & Offset:  
Northing:  
Easting:  
Elevation:  
Date Drilled:

**AB-8**  
1040+45, 12 RT  
1495056.6  
516403.4  
83.1'  
07/28/13

**AB-9**  
1038+49, 1 RT  
1494866.6  
516356.6  
82.9'  
07/28/13

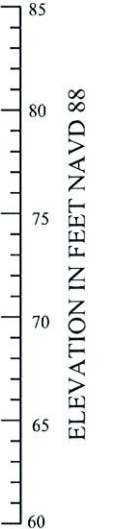
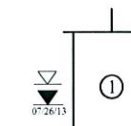
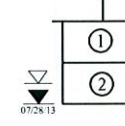
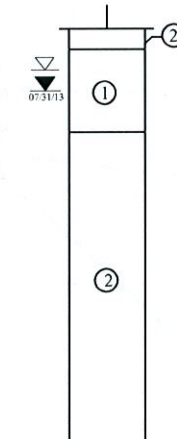
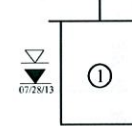
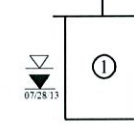
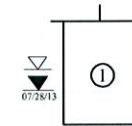
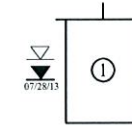
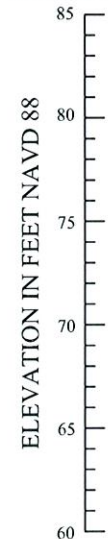
**AB-10**  
1036+52, 9 RT  
1494670.7  
516332.2  
83.0'  
07/28/13

**AB-11**  
1034+53, 3 LT  
1494477.1  
516285.7  
82.7'  
07/28/13

**AB-12**  
1032+42, 29 RT  
1494280.4  
516263.1  
82.2'  
07/31/13

**AB-13\***  
1030+58, 0  
1494087.2  
516224.0  
82.6'  
07/28/13

**AB-14**  
1028+58, 9 RT  
1493908.1  
516303.9  
82.0'  
07/26/13



**LEGEND**

- ① Brown to light brown fine SAND to fine SAND with clay/silt, (A-3)
- ② Brown to gray clayey SAND, (A-2-6)
- ③ Dark brown to orangish brown silty SAND, (A-2-4)
- ▽ Estimated seasonal high groundwater level
- ▽ Groundwater level encountered on date shown
- (A-3) A.A.S.H.T.O.: Soil classification group symbol as determined by visual examination
- \* Boring terminated at shown depths due to collapse



Z:\Roadways\Ikenna\WBQ\_Orange\_Ct\Shingle Creek Corridor Study\Acad

REVISIONS						NAMES	DATES	GODWIN N. NNADI, Ph.D., FL REGISTRATION NO. 50637 NADIC ENGINEERING SERVICES, INC. 601 N. HART BOULEVARD ORLANDO, FL 32804 PH (407) 521-4771 CERTIFICATE OF AUTHORITY	ORANGE COUNTY PUBLIC WORKS COUNTY: ORANGE PROJECT NO.: Y12-819	SHEET TITLE:	
DATE	BY	DESCRIPTION	DATE	BY	DESCRIPTION					PROJECT NAME:	SHEET NO.
									ORANGE COUNTY PUBLIC WORKS	REPORT OF AUGER BORINGS	33
										SHINGLE CREEK MULTI-USE TRAIL PHASE I - SEGMENT I	

Boring No.:  
Station & Offset:  
Northing:  
Easting:  
Elevation:  
Date Drilled:

**AB-15\***  
1026+59, 1 RT  
1493735  
516402.1  
82.2'  
07/28/13

**AB-16**  
1024+60, 12 RT  
1493572.5  
516516.7  
82.8'  
07/28/13

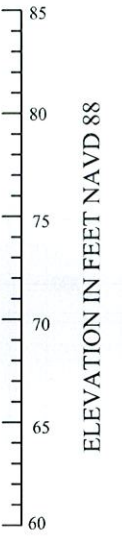
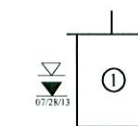
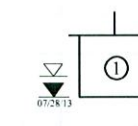
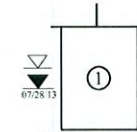
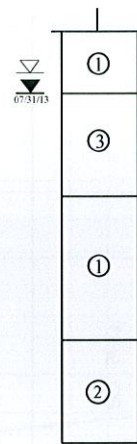
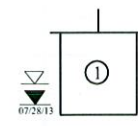
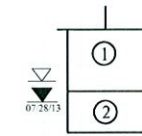
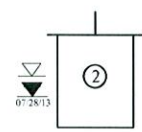
**AB-17\***  
1022+62, 2 LT  
1493397.2  
516610.3  
82.3'  
07/28/13

**AB-18**  
1020+63, 10 RT  
1493233.7  
516725.2  
82.7'  
07/31/13

**AB-19**  
1018+64, 1 LT  
1493059.6  
516820.9  
82.4'  
07/28/13

**AB-20**  
1016+64, 7 RT  
1492894.2  
516933.5  
82.0'  
07/28/13

**AB-21\***  
1014+66, 2 LT  
1492722  
517031.1  
82.0'  
07/28/13



Boring No.:  
Station & Offset:  
Northing:  
Easting:  
Elevation:  
Date Drilled:

**AB-22**  
1012+66, 8 RT  
1492556.5  
517145.3  
81.5  
07/26/13

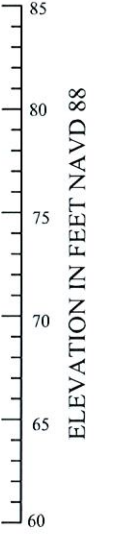
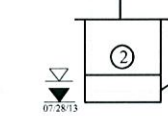
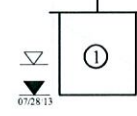
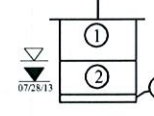
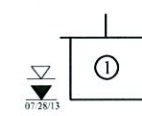
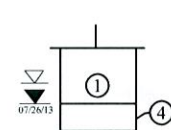
**AB-23\***  
1010+68, 1 RT  
1492368.7  
517209.2  
82.0'  
07/28/13

**AB-24**  
1008+42, 8 RT  
1492181.5  
517271  
82.6'  
07/31/13

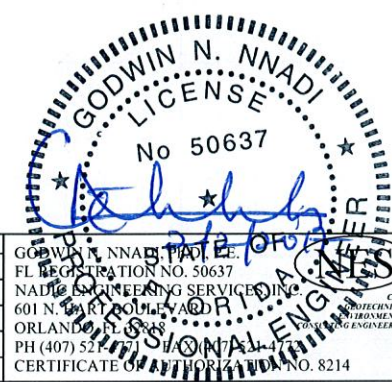
**AB-25\***  
1006+69, 0  
1491988.3  
517328.1  
82.8'  
07/28/13

**AB-26\***  
1004+69, 14 RT  
1491827.1  
517447.9  
83.2'  
07/28/13

**AB-27**  
1002+61, 43 LT  
1491656.5  
517536  
82.7'  
07/28/13



- LEGEND**
- ① Brown to light brown fine SAND to fine SAND with clay/silt, (A-3)
  - ② Brown to gray clayey SAND, (A-2-6)
  - ③ Dark brown to orangish brown silty SAND, (A-2-4)
  - ④ Light brown to dark brown organic silty SAND, (A-8)
  - ▽ Estimated seasonal high groundwater level
  - ▽<sub>07/28/13</sub> Groundwater level encountered on date shown
  - (A-3) A.A.S.H.T.O.: Soil classification group symbol as determined by visual examination
  - \* Boring terminated at shown depths due to collapse



REVISIONS		NAMES	DATES
DATE	BY	DESCRIPTION	

Drawn by: MS 03-20-15  
Checked by: GNN 03-20-15  
Designed by: N/A N/A  
Checked by: N/A N/A  
Approved by: GNN

GODWIN N. NNADI  
P.E.  
FL REGISTRATION NO. 50637  
NADLE ENGINEERING SERVICES INC.  
601 N. W. 10TH AVE. SUITE 100  
ORLANDO, FL 32801  
PH (407) 527-1111  
CERTIFICATE OF PROFESSIONAL ENGINEERING NO. 8214

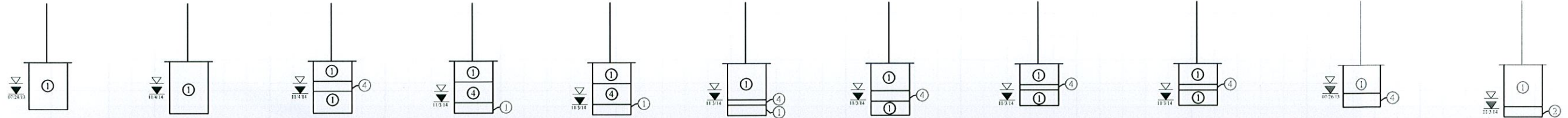


ORANGE COUNTY PUBLIC WORKS  
COUNTY: ORANGE  
PROJECT NO.: Y12-819

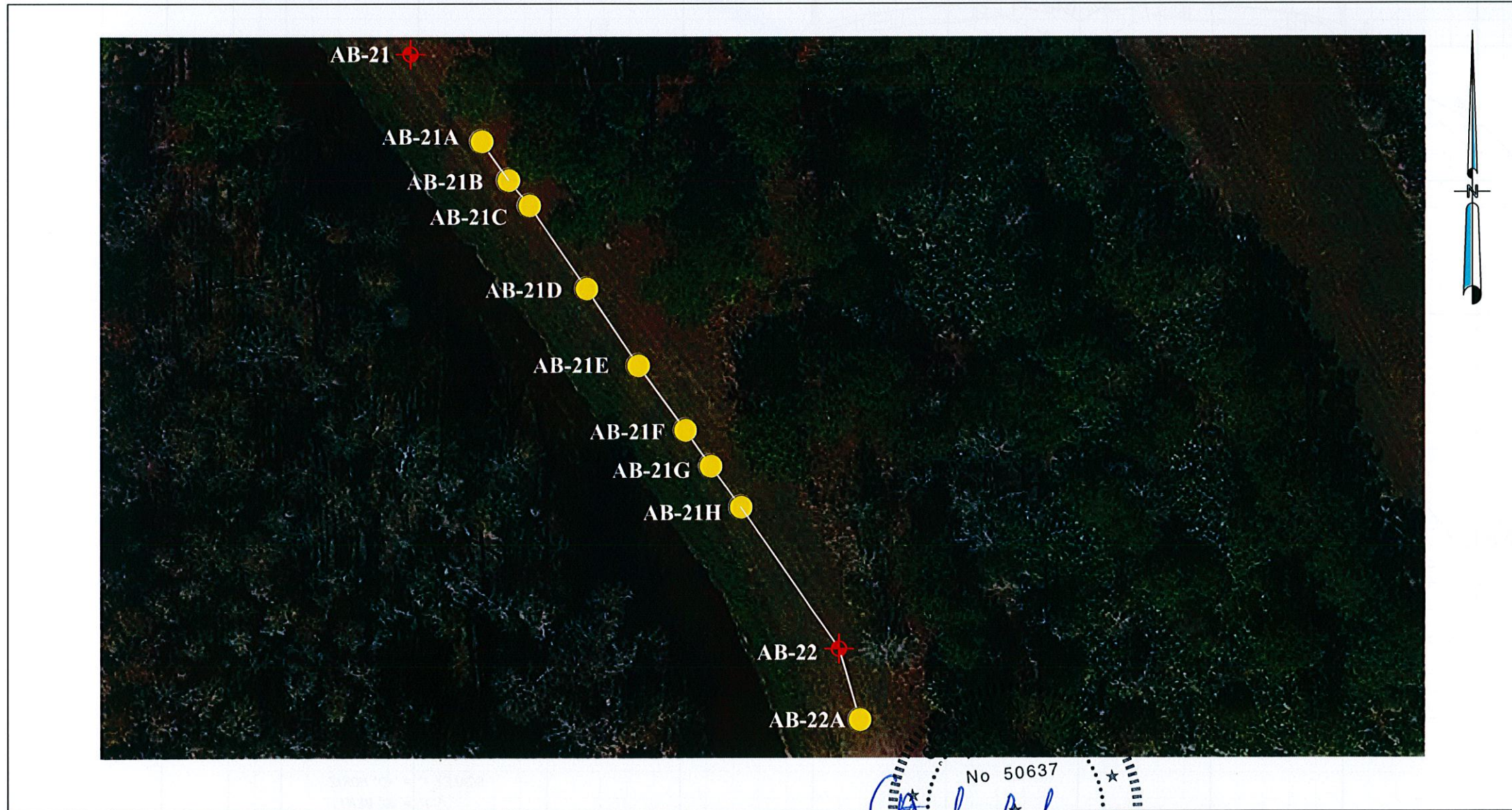
SHEET TITLE:  
REPORT OF AUGER BORINGS  
PROJECT NAME:  
SHINGLE CREEK MULTI-USE TRAIL  
PHASE I - SEGMENT I  
SHEET NO.: 34

Boring No.:	AB-21*	AB-21A	AB-21B	AB-21C	AB-21D	AB-21E	AB-21F	AB-21G	AB-21H	AB-22*	AB-22A
Station & Offset:	1014+66, 2 LT	1014+36, 2 RT	1014+24, 3 RT	1014+18, 4 RT	1013+93, 2 RT	1013+68, 2 RT	1013+43, 3 RT	1013+34, 3 RT	1013+19, 5 RT	1012+66, 8 RT	1012+42, 1 RT
Northing:	1492722	1492698	1492688.9	1492683.8	1492661.6	1492640.3	1492620.1	1492611.9	1492599.8	1492556.5	1492532.0
Easting:	517031.1	517050.4	517057.5	517061.1	517072.6	517085.9	517100.1	517105.5	517114.4	517145.3	517150.7
Elevation:	82.0'	82.1'	82.1'	82.1'	81.9'	81.8'	81.8'	81.7'	81.7'	81.5'	81.5'
Date Drilled:	07/28/13	11/4/14	11/4/14	11/3/14	11/3/14	11/3/14	11/3/14	11/3/14	11/3/14	07/26/13	11/3/14

ELEVATION IN FEET  
NAVD 88



ELEVATION IN FEET  
NAVD 88



- LEGEND**
- ① Brown to light brown fine SAND to fine SAND with clay/silt, (A-3)
  - ② Brown to gray clayey SAND, (A-2-6)
  - ③ Dark brown to orangish brown silty SAND, (A-2-4)
  - ④ Light brown to dark brown organic silty SAND, (A-8)
  - ▽ Estimated seasonal high groundwater level
  - ▽<sub>07/28/13</sub> Groundwater level encountered on date shown
  - (A-3) A.A.S.H.T.O.: Soil classification group symbol as determined by visual examination
  - \* Boring terminated at shown depths due to collapse
  - ⊕ Approximate boring location

Z:\Roadways\Kernan\WBQ\_Orange\_C\Shingle Creek Corridor Study\Acad

REVISIONS					
DATE	BY	DESCRIPTION	DATE	BY	DESCRIPTION

NAMES	DATES
Drawn by: MS	08-25-15
Checked by: GNN	08-25-15
Designed by: N/A	N/A
Checked by: N/A	N/A
Approved by: GNN	

No 50637

GODWIN N. NADIC, Ph.D., P.E.  
FL REGISTRATION NO. 50637  
NADIC ENGINEERING SERVICES, INC.  
601 N. HART BOULEVARD  
ORLANDO, FL 32810  
PH (407) 521-4771 FAX (407) 521-4772

PROFESSIONAL ENGINEER  
STATE OF FLORIDA

ORANGE COUNTY PUBLIC WORKS	
COUNTY	PROJECT NO.
ORANGE	Y12-819

SHEET TITLE: REPORT OF AUGER BORINGS - MUCK LIMITS	
PROJECT NAME: SHINGLE CREEK MULTI-USE TRAIL PHASE I - SEGMENT I	SHEET NO. 35