

ORANGE COUNTY COURTHOUSE GENERATOR FUEL DELIVERY AND MASTER CONTROLLER SYSTEMS RETROFIT



BID DOCUMENTS
NOVEMBER 6, 2015

ATKINS

482 SOUTH KELLER ROAD
ORLANDO, FLORIDA 32810

Sheet Number	Sheet Name	Scale	Sheet Issued
EP-000	COVER SHEET AND SHEET INDEX	No Scale	Yes
E-101	ELECTRICAL PLANS	1/4"=1'-0"	Yes
P-101	PLUMBING PLANS	1/4"=1'-0"	Yes

ATKINS

482 SOUTH KELLER ROAD
ORLANDO, FL 32810
PHONE: 407.647.7275 FAX: 407.740.8958

CONSULTANT:

CLIENT:



PROJECT NAME:

**Orange County Courthouse
Generator Fuel Delivery And Master Controller
Systems Retrofit**
425 N. Orange Avenue, Orlando, FL 32801
100045190

No.	Date	Description

ISSUE LOG
PROFESSIONAL SEALS:

SHEET TITLE:
COVER SHEET AND SHEET INDEX

SHEET INFORMATION:	
JOB No. 100045190	Date Issued: NOVEMBER 6, 2015
Designed By: JLA	Sheet Number:
Checked By: JLA	EP-000
OC Review: JLA	
Phase:	

CONSULTANT:

CLIENT:



PROJECT NAME:

Orange County Courthouse Generator Fuel Delivery And Master Controller Systems Retrofit

425 N. Orange Avenue, Orlando, FL 32801

100045190

No.	Date	Description

ISSUE LOG
PROFESSIONAL SEALS:

GEARY F. HEINRICH, P.E.
FLORIDA LIC. NO. 47215

SHEET TITLE:

ELECTRICAL PLANS

SHEET INFORMATION:	
JOB No. 100045190	Date Issued: NOVEMBER 6, 2015
Designed By: JLA	Sheet Number:
Checked By: GFH	E-101
QC Review: GFH	
Phase:	

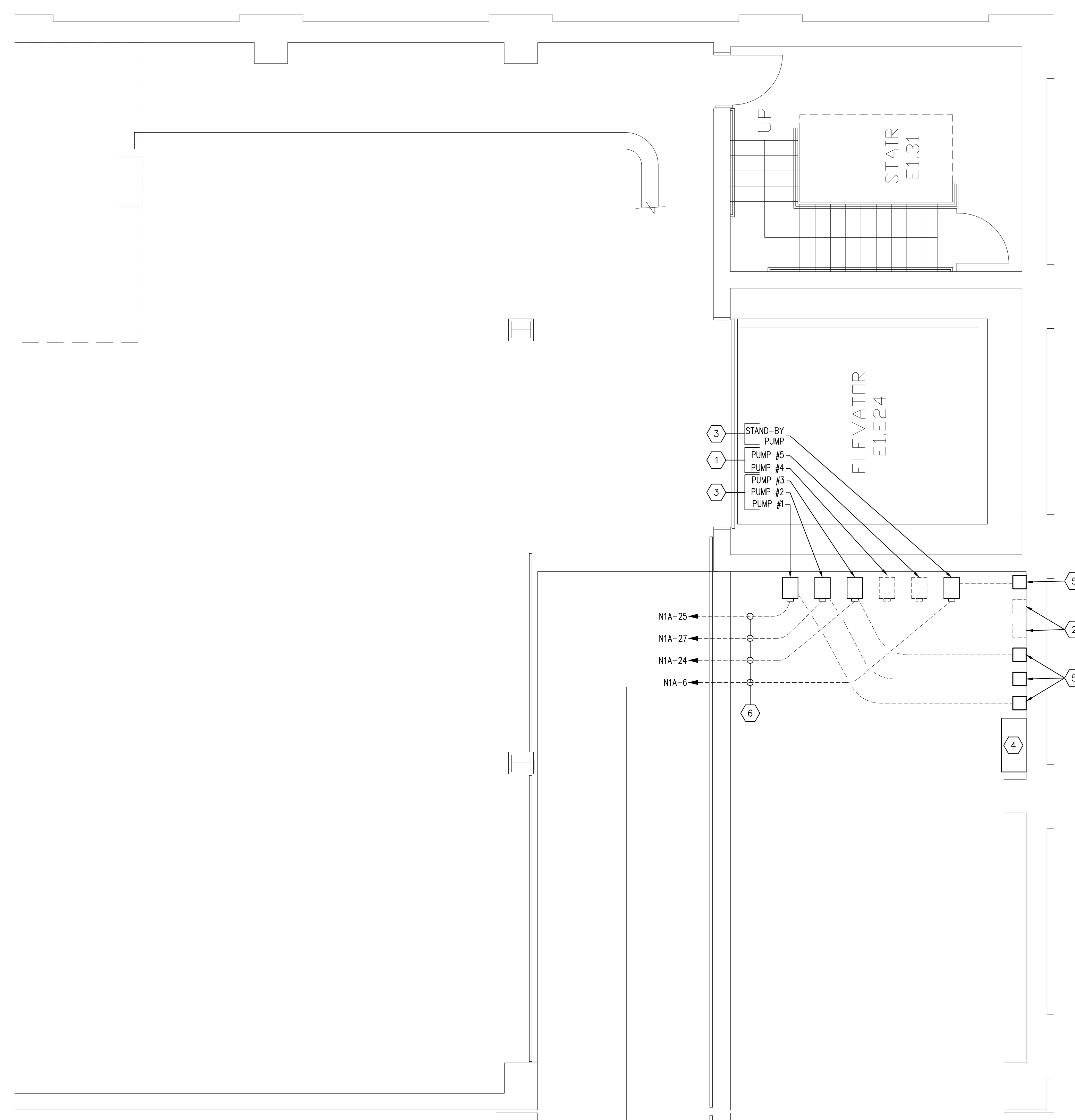
PUMP LOAD SUMMARY				
PUMP NO.	HORSEPOWER	VOLTAGE	KVA	AMPS
PUMP #1	1/2	120	1.176	9.8
PUMP #2	1/2	120	1.176	9.8
PUMP #3	1/2	120	1.176	9.8
STAND-BY PUMP	1/2	120	1.176	9.8
TOTAL			4.7	39.2
LOAD OF EXISTING PUMP #1, #2, #3 AND #6 (STAND-BY)			2.5	20.8
LOAD ADDED TO PANEL "N1A"			2.2	18.4

NOTE:
1. FUEL PUMPS ONLY RUN WHEN EMERGENCY GENERATOR IS OPERATING.

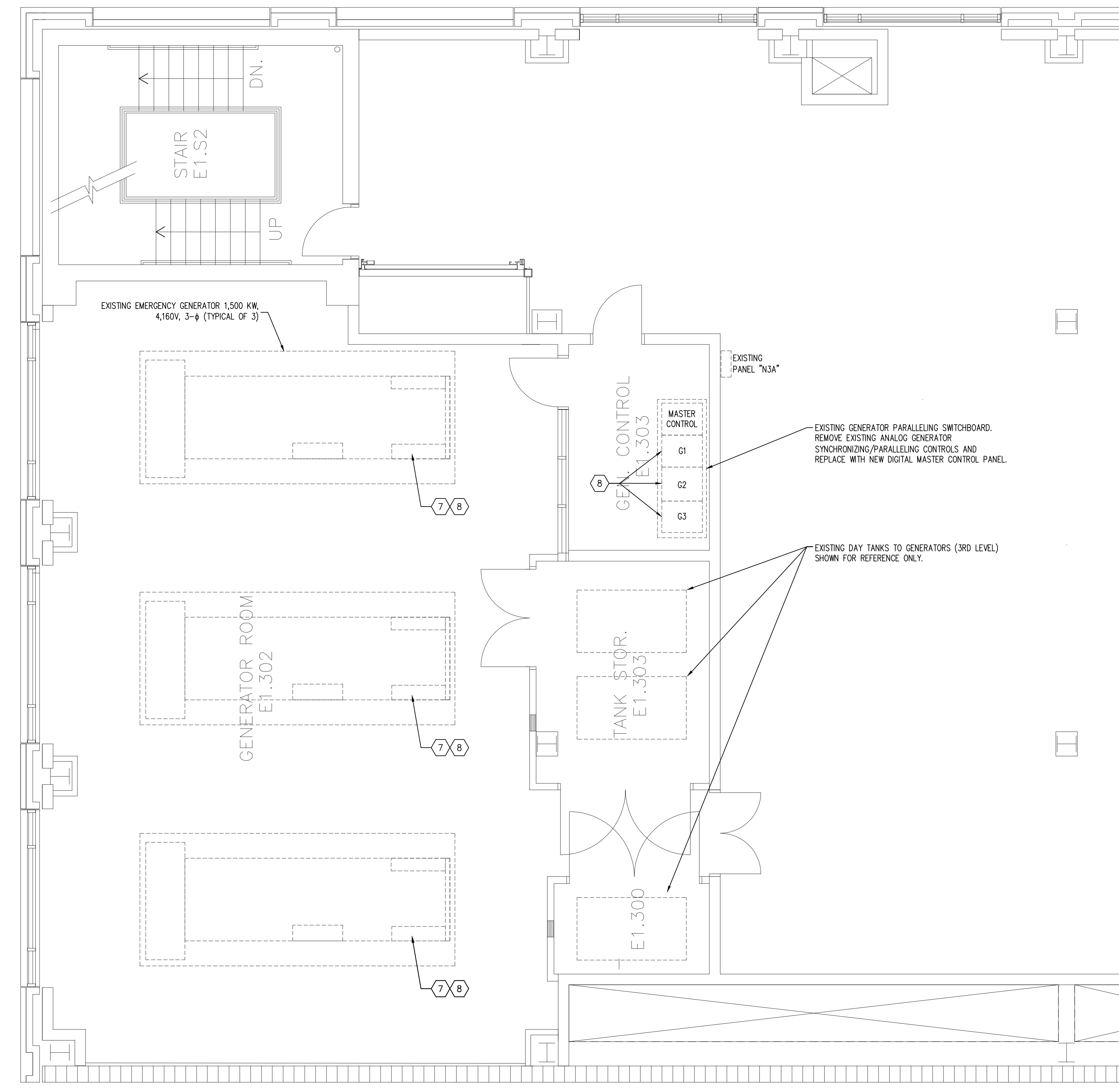
GENERAL NOTE

1. SCOPE OF WORK CONSISTS OF:
 • GENERATOR FUEL SYSTEM UPGRADE.
 • GENERATOR CONTROL SYSTEM CONVERSION FROM ANALOG TO DIGITAL.

- KEYED NOTES**
- 1 EXISTING PUMPS TO REMAIN.
 - 2 EXISTING MOTOR STARTERS TO REMAIN.
 - 3 RE-USE EXISTING PUMPS CIRCUITS AND CONNECT TO NEW PUMP AS INDICATED ON PLAN.
 - 4 NEW FUEL PUMP CONTROL PANEL. RE-USE EXISTING CIRCUITS FROM EXISTING FIRE PUMP CONTROL PANEL. SEE SHEET P-101 FOR ADDITIONAL INFORMATION.
 - 5 REPLACE STARTERS WITH NEW 120V SQUARE-D MAGNETIC MOTOR STARTER NEMA 1 ENCLOSURE - CLASS 8536 TYPE S80-1 WITH ONE MELTING ALLOY THERMAL UNIT - NUMBER B11.5 OR EQUIVALENT.
 - 6 EXISTING 2#12 & 1#12 G IN 3/4" CONDUIT.
 - 7 REMOVE EXISTING GENERATOR CONTROL PANEL AND PROVIDE BLANK COVER.
 - 8 PROVIDE NEW GENSET DIGITAL CONTROLLER IN RESPECTIVE GENERATOR SECTION OF PARALLELING SWITCHBOARD.



A ELECTRICAL PLAN - LOWER LEVEL
SCALE: 1/4" = 1'-0"



B ELECTRICAL PLAN - THIRD LEVEL
SCALE: 1/4" = 1'-0"

