

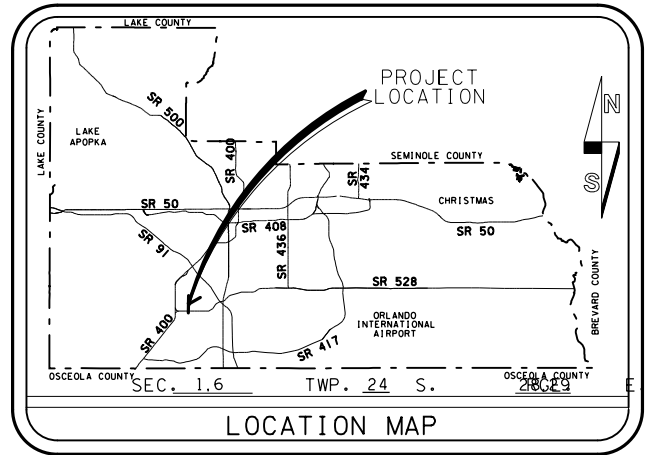
Q:\Cadd\JYPC Final Electronic Deliverables\Section 1B-2A-Final(4-28-2016)\Microstation\Utilities\01_1



UTILITY PLANS FOR CANADIAN COURT / JOHN YOUNG PARKWAY CONNECTOR ROADWAY ORANGE COUNTY PROJECT NO. 5089 - SECTION 1B/2A FROM STA. 21+89.43 TO STA. 38+49.40

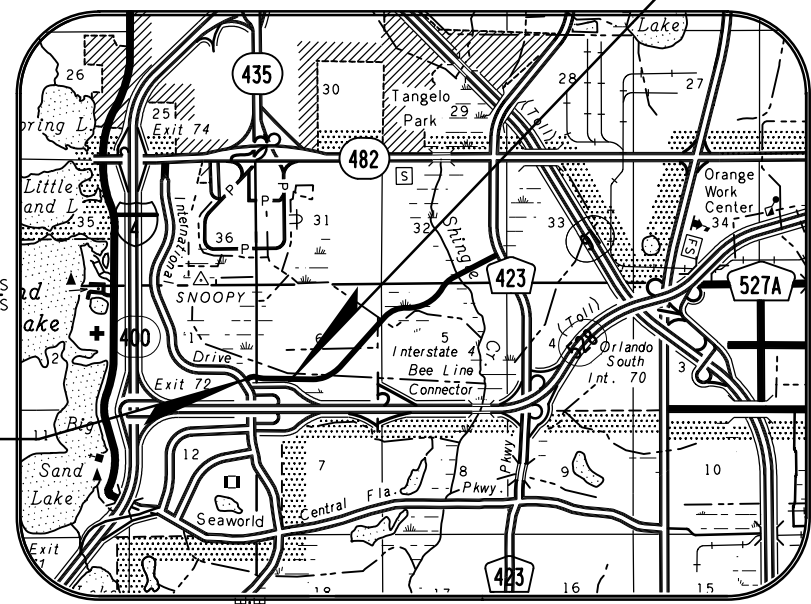
**DISTRICT NO: 6
ORANGE COUNTY, FLORIDA**

**END PROJECT
STA. 38+ 49.40**



UTILITIES ENCOUNTERED	
AT&T CORP. P.E.A. ENGINEERING (407) 351-8180	
AT&T SOUTHEAST, F/K/A BELLSOUTH (407) 351-8180	
BRIGHT HOUSE NETWORKS (407) 532-8509	
PROGRESS ENERGY DISTRIBUTION (407) 905-3321	
VERIZON BUSINESS (407) 841-4226	
ORANGE COUNTY UTILITIES (407) 254-9747	
LEVEL-3 COMMUNICATIONS (407) 462-0609	
ORLANDO UTILITIES COMMISSION WATER (407) 434-2568 ELECTRIC (407) 434-4173	
TECO PEOPLES GAS (407) 420-6607	
ORANGE COUNTY TRAFFIC (407) 836-7803	
DUKE ENERGY TRANSMISSION (863) 678-4573	

**BEGIN
PROJECT
STA. 21+ 89.43**



SOURCE OF BENCH MARK DATUM

ORANGE COUNTY BENCHMARKS HELD FOR BENCH RUN TO SET CONTROL ALONG JYP CONNECTOR ROAD FROM INTERNATIONAL DRIVE TO JOHN YOUNG PARKWAY ELEVATIONS SHOWN ARE FROM NGVD29 DATUM DESCRIPTIONS ARE PER ORANGE COUNTY FIELD NOTES

L-665-006, NGVD29: 100.023'
SET 2" ORANGE COUNTY CONTROL BRASS DISK STAMPED "BM L-665-006" IN THE CENTERLINE OF 0.9 FT. X 14.6 FT. CONCRETE HEADWALL WITH 28" R.C.P. CROSS OVER PIPE; 29 FT. +- SOUTH OF THE WEST BOUND EDGE OF PAVEMENT OF STATE ROAD 528.66 FT. +- NORTH OF THE EAST BOUND EDGE OF PAVEMENT OF STATE ROAD 538.

L-665-008, NGVD29: 86.329'
SET 2" ORANGE COUNTY CONTROL BRASS DISK STAMPED "BM L-665-008" 26 FT. +- SOUTH OF THE SOUTH EDGE OF PAVEMENT OF THE EAST BOUND LANE OF STATE ROAD 528; 7 FT. +- SOUTH OF THE SPEED LIMIT SIGN; 177 FT. +- WEST SOUTHWEST OF A CALL BOX NUMBER 75505; ON THE EAST END OF 0.9 FT. X 6.0 FT. HEADWALL WITH 12" CROSS OVER PIPE.

L-807-011, NGVD29: 89.249'
2 1/2" CONTROL DISK (STAMPED L-807-011) IN NORTH END OF DROP INLET ON THE NORTHWEST CORNER OF COMMODITY CIRCLE AND JOHN YOUNG PARKWAY, PK NAIL AND ORANGE COUNTY DISC IN NORTH EDGE OF COMMODITY CIRCLE, NAIL AND ORANGE COUNTY DISC IN NORTH FACE 6" OAK TREE, PK NAIL AND ORANGE COUNTY DISC IN WEST EDGE JOHN YOUNG PARKWAY. (PREVIOUSLY PUBLISHED ORANGE COUNTY ELEVATION WAS 27.203)

L-807-012, NGVD29: 92.510'
2 1/2" CONTROL DISK (STAMPED L-807-012) IN CONCRETE ISLAND AT ENTRANCE TO AT&T (9333 JOHN YOUNG PARKWAY), "X" CUT IN WEST END OF CONCRETE ISLAND, "X" CUT IN FOOT PAD FOR LIGHT POST, PK NAIL AND ORANGE COUNTY DISC IN SOUTH EDGE OF ENTRANCE TO AT&T ACROSS FROM GUARD HOME. (PREVIOUSLY PUBLISHED ORANGE COUNTY ELEVATION WAS 28.197)
0.2 MILES SOUTH OF ENTRANCE TO "ATT" 9701 S. JOHN YOUNG PARKWAY OR 0.40 MILES NORTH OF OVERPASS OF 528 (BEE LINE) OVER JOHN YOUNG PARKWAY.

FDOT DESIGN STANDARDS, JANUARY 2010

NOTE:
PLANS WERE PREPARED ACCORDING TO AVAILABLE INFORMATION TO ADEQUATELY ADDRESS CONDITIONS AS THEY EXISTED AT THE TIME OF PLANS PREPARATION. NEEDS, CONDITIONS AND OWNERSHIP OF PROPERTIES MAY HAVE CHANGED SINCE PROJECT DESIGN. THE COUNTY'S REPRESENTATIVE WILL ADDRESS CHANGES AND NEEDS WITH THE PROPERTY OWNER OR THEIR REPRESENTATIVES. CONTRACTOR SHALL WORK WITH THE COUNTY'S REPRESENTATIVE IN ADDRESSING AND MEETING NEEDS AND CONDITIONS THAT MAY HAVE CHANGED SINCE PLANS PREPARATION.

**BID SET
APRIL 2016**

FILE # 39548
CIP # 4420-038-1411-67

TERESA JACOBS ORANGE COUNTY MAYOR

BOARD OF COUNTY COMMISSIONERS

S. SCOTT BOYD	DISTRICT 1
BRYAN NELSON	DISTRICT 2
PETE CLARKE	DISTRICT 3
JENNIFER THOMPSON	DISTRICT 4
TED EDWARDS	DISTRICT 5
VICTORIA P. SIPLIN	DISTRICT 6

RAYMOND HANSON, P.E., PUBLIC UTILITIES DIRECTOR

DATE _____ ENGINEER: RAJ SINGH REG. NO. 41210

INDEX OF SHEETS	
SHEET	DESCRIPTION
OU-1	COVER SHEET
OU-2	GENERAL NOTES
OU-3	ASSET ATTRIBUTE TABLE
OU-4	RECLAIMED WATER PLAN AND PROFILE- STATION 1+00 - 2+50
OU-5	RECLAIMED WATER PLAN AND PROFILE- STATION 2+50 - 8+00
OU-6	RECLAIMED WATER PLAN AND PROFILE- STATION 8+00 - 13+50
OU-7	RECLAIMED WATER PLAN AND PROFILE- STATION 13+50 - 18+82.88
OU-8	GENERAL NOTES & DETAILS- PROPOSED UTILITIES
OU-9	GENERAL NOTES & DETAILS- PROPOSED UTILITIES

PLANS PREPARED BY:
ATKINS
482 SOUTH KELLER ROAD
ORLANDO, FLORIDA 32810-6101
(407)-647-7275
FAX (407)-647-7009
LICENSE NO. 24

REVISIONS	DATE	BY

DESIGNED BY: <u>RS</u> DATE: <u>05/01/13</u>
DRAWN BY: <u>GG/WF</u> DATE: <u>05/01/13</u>
CHECKED BY: <u>-</u> DATE: <u>05/01/13</u>
APPROVED BY: <u>-</u> DATE: <u>05/01/13</u>
PROJECT NO. 5089 - SEC 1B

SHEET OU-1

4/27/2016 3:07:14 PM

12/3/2015
9:34:36 AM

Q:\Cadd\JYPConnectorRd\Section1B\utils\02_rudetails_notes_OU-2_with OCU GN.dgn

OCU GENERAL NOTES:

1. THE CONTRACTOR SHALL EXERCISE EXTREME CAUTION WHEN EXCAVATING IN PROXIMITY OF WATER MAINS, WASTEWATER FORCE MAINS, GRAVITY MAINS AND RECLAIMED WATER MAINS. MAIN LOCATIONS SHOWN ON PLANS MAY NOT BE EXACT. THE CONTRACTOR IS RESPONSIBLE FOR FIELD VERIFYING EXISTING UTILITY LOCATIONS.
2. SHOULD A PIPE EMERGENCY OCCUR, THE CONTRACTOR SHALL IMMEDIATELY NOTIFY THE OCU DISPATCH OPERATOR (407-836-2777) AND THE OCU INSPECTOR.
3. THE CONTRACTOR SHALL NOTIFY THE OCU CONSTRUCTION DIVISION AT LEAST SEVEN DAYS PRIOR TO COMMENCEMENT OF THE CONSTRUCTION PROJECT BY CALLING (407) 254-9798.
4. THE CONTRACTOR SHALL NOTIFY THE OCU CONSTRUCTION DIVISION AT LEAST 48 HOURS PRIOR TO ANY UTILITIES CONSTRUCTION BY CALLING (407) 254-9798.
5. THE MATERIALS, PRODUCTS, AND CONSTRUCTION OF ALL UTILITIES CONNECTING TO THE OCU SYSTEM SHALL BE IN CONFORMANCE WITH THE ORANGE COUNTY UTILITIES STANDARDS AND CONSTRUCTION SPECIFICATIONS MANUAL.
6. ALL OCU MAINS AND FACILITIES WITHIN THE LIMITS OF THE PROJECT SHALL BE SUPPORTED AND PROTECTED AGAINST DAMAGE DURING CONSTRUCTION.
7. THE CONTRACTOR, AT THE CONTRACTOR'S EXPENSE, SHALL IMMEDIATELY REPAIR ALL DAMAGES TO OCU MAINS AND FACILITIES. IF THE REPAIR IS NOT MADE IN A TIMELY MANNER, AS DETERMINED BY OCU, OCU MAY PERFORM REQUIRED REPAIRS AND CLEANUP. THE CONTRACTOR WILL BE CHARGED FOR ALL EXPENSES ASSOCIATED WITH THE REPAIR.
8. THE CONTRACTOR SHALL ADJUST ALL EXISTING OCU MAINS AND FACILITIES IN CONFLICT WITH NEW GRADE, NEW OR ALTERED ROADWAYS, SIDEWALKS, DRIVEWAYS, OR STORM WATER IMPROVEMENTS. OCU FACILITIES TO BE ADJUSTED INCLUDE, BUT ARE NOT LIMITED TO PIPELINES, PUMP STATIONS, VALVE BOXES, AIR RELEASE VALVES, FIRE HYDRANTS, MANHOLE COVERS, AND METERS.
9. ONLY OCU SHALL OPERATE OCU WATER, WASTEWATER, AND RECLAIMED WATER VALVES. THE CONTRACTOR SHALL COORDINATE VALVE OPERATION WITH THE OCU INSPECTOR. FOR OPERATION OF MAINS NOT OWNED BY OCU, IT IS THE CONTRACTOR'S RESPONSIBILITY TO COORDINATE WITH THE APPROPRIATE UTILITY REPRESENTATIVE.
10. CONSTRUCTION ACTIVITIES SHALL NOT CAUSE INTERRUPTIONS IN WATER, WASTEWATER, OR RECLAIMED WATER SERVICE. THE CONTRACTOR SHALL COORDINATE PRE-APPROVED INTERRUPTIONS OF SERVICE WITH THE OCU INSPECTOR 7 WORKING DAYS IN ADVANCE.
11. THE CONTRACTOR SHALL PROVIDE FOR BYPASSING AND/OR HAULING WASTEWATER DURING APPROVED INTERRUPTIONS OF WASTEWATER FLOWS AND CONNECTIONS. THE CONTRACTOR SHALL SUBMIT A BYPASS PLAN SIGNED AND SEALED BY A PROFESSIONAL ENGINEER TO OCU DEVELOPMENT ENGINEERING FOR APPROVAL PRIOR TO IMPLEMENTATION BY CONTRACTOR.
12. ALL VALVES INSTALLED AS PART OF THIS CONSTRUCTION PROJECT SHALL REMAIN CLOSED DURING CONSTRUCTION. KEEP VALVES ON ALL WET TAPS CLOSED UNTIL CLEARED BY FDEP. DO NOT CONNECT NEWLY CONSTRUCTED WATER MAINS TO ANY EXISTING WATER MAINS UNLESS CLEARED BY FDEP AND OCU.
13. THE CONTRACTOR SHALL PROVIDE A JUMPER ASSEMBLY WITH A BACKFLOW PREVENTER FOR MAKING TEMPORARY CONNECTIONS TO AN EXISTING POTABLE WATER SOURCE IN ORDER TO CHLORINATE AND FLUSH NEW WATER MAINS WITH POTABLE WATER. ANY TEMPORARY POTABLE WATER CONNECTIONS TO RECLAIMED WATER OR FORCEMAIN SHALL ALSO BE EQUIPPED WITH A BACKFLOW PREVENTER.
14. FOR PVC PIPE THAT WILL BE OWNED AND MAINTAINED BY OCU, NO PIPE BENDING IS ALLOWED. THE MAXIMUM ALLOWABLE TOLERANCE FOR JOINT DEFLECTION IS 0.75 DEGREES (3-INCHES PER JOINT PER 20 FT STICK OF PIPE.) ALIGNMENT CHANGE SHALL BE MADE ONLY WITH SLEEVES AND FITTINGS.
15. FOR NON-PVC PIPE THAT WILL BE OWNED AND MAINTAINED BY OCU, LONG RADIUS CURVES, EITHER HORIZONTAL OR VERTICAL, MAY BE INSTALLED WITH STANDARD PIPE BY DEFLECTIONS AT THE JOINTS. MAXIMUM DEFLECTIONS AT PIPE JOINTS, FITTINGS AND LAYING RADIUS FOR THE VARIOUS PIPE LENGTHS SHALL NOT EXCEED 75 PERCENT OF THE PIPE MANUFACTURER'S RECOMMENDATION.

REVISIONS					
DATE	BY	DESCRIPTION	DATE	BY	DESCRIPTION

Engineer of Record:
ATKINS
License No. 24

RAJ SINGH
P.E. #41210
482 South Keller Road
Orlando, FL 32810
(407) 647-7275
www.pbsj.com



CANADIAN COURT/
JOHN YOUNG PARKWAY
CONNECTOR ROADWAY

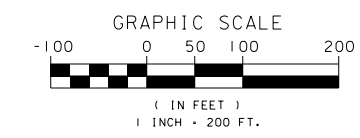
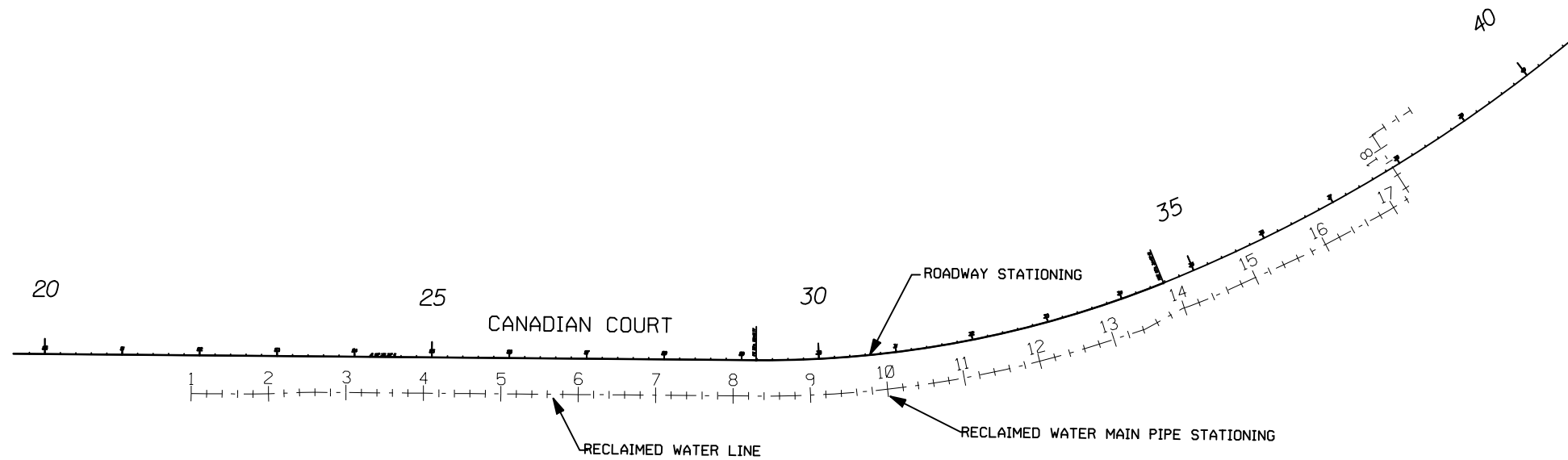
PROJ. NO. 5089 - SEC. 1B/2A

**GENERAL NOTES
PROPOSED UTILITIES**

SHEET NO.
OU-2

5/11/2016
5:05:21 PM

Q:\Cadd\JYPC Final Electronic Deliverables\Section 1B-2A-Final(4-28-2016)\Microstation\Utilities\03_asset_attribute_table_0



ID NUMBER	PLAN SHEET	EASTING	NORTHING	ELEVATION	VALVE TYPE	MAIN TYPE	VALVE SIZE	VALVE MFR	VALVE MODEL*	* TURNS TO CLOSE	GEAR ACTUATOR	GEAR RATIO	SIDE ACTUATOR	ACTUATOR MFR	COMMENTS
VR-1	OU-5	41,385.37	45,568.98		GATE VALVE	RECLAIMED	30"								
VR-2	OU-7	42,389.78	45,786.32		COMBINATION AIR/VAC VALVE	RECLAIMED	2"								

ID NUMBER	PLAN SHEET	EASTING	NORTHING	ELEVATION	MAIN TYPE	FITTING TYPE	COMMENTS
FR-1	OU-4	40,880.40	45,570.30		RECLAIMED	18" TAPPING SLEEVE & VALVE	
FR-2	OU-4	40,904.44	45,570.10		RECLAIMED	30" X 18" REDUCER	
FR-3	OU-4	40,910.56	45,570.04		RECLAIMED	30" 22.5" BEND	
FR-4	OU-4	40,925.16	45,569.92		RECLAIMED	30" 22.5" BEND	
FR-5	OU-6	41,660.27	45,566.64		RECLAIMED	30" 5.63" BEND	
FR-6	OU-6	41,819.69	45,580.97		RECLAIMED	30" 5.63" BEND	
FR-7	OU-6	41,953.49	45,606.42		RECLAIMED	30" 5.63" BEND	
FR-8	OU-6	42,112.53	45,653.27		RECLAIMED	30" 11.25" BEND	
FR-9	OU-7	42,160.82	45,680.11		RECLAIMED	30" 11.25" BEND	
FR-10	OU-7	42,456.34	45,824.76		RECLAIMED	30" 90" BEND	
FR-11	OU-7	42,405.57	45,904.37		RECLAIMED	30" 90" BEND	

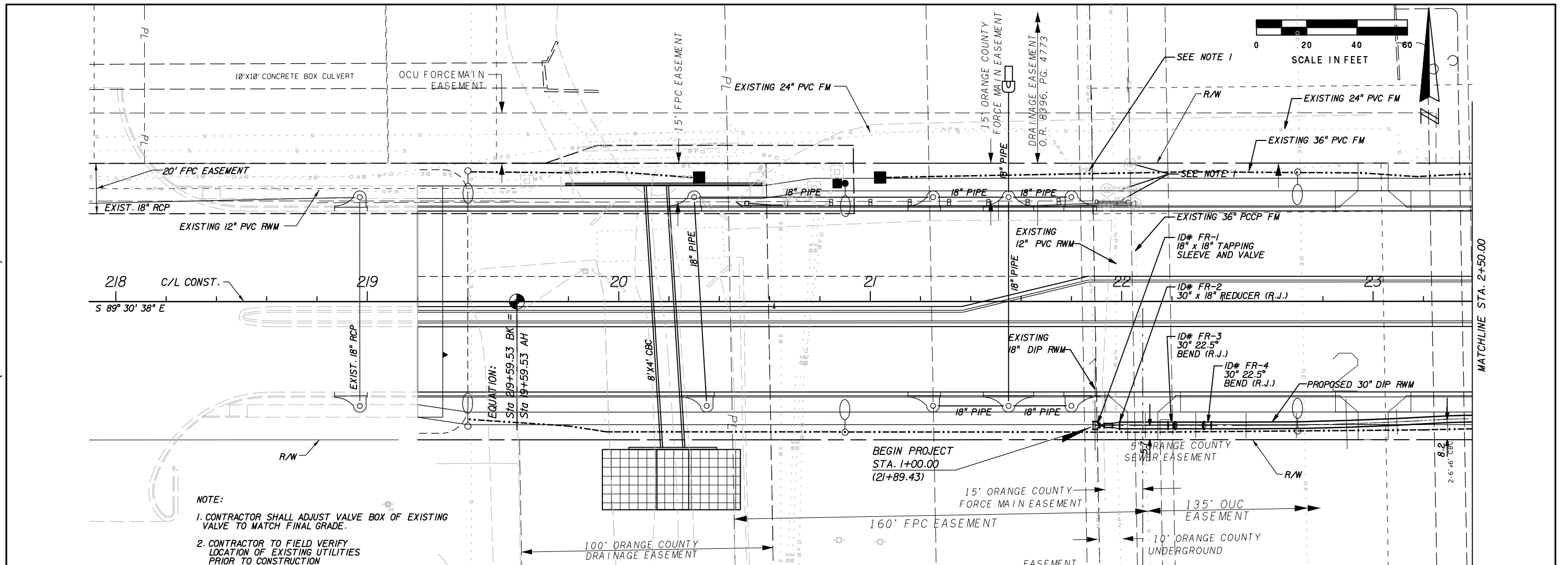
ID NUMBER	PLAN SHEET	EASTING	NORTHING	ELEVATION	MAIN TYPE	TYPE OF SHOT	CONSTRUCTION METHOD	MATERIAL	PRESSURE CLASS	MANUFACTURER	COMMENTS
PR-1	OU-4				RECLAIMED	TOP OF PIPE					
PR-2	OU-4				RECLAIMED	TOP OF PIPE					
PR-3	OU-4				RECLAIMED	TOP OF PIPE					
PR-4	OU-5				RECLAIMED	TOP OF PIPE					
PR-5	OU-5				RECLAIMED	TOP OF PIPE					
PR-6	OU-5				RECLAIMED	TOP OF PIPE					
PR-7	OU-5				RECLAIMED	TOP OF PIPE					
PR-8	OU-5				RECLAIMED	TOP OF PIPE					
PR-9	OU-5				RECLAIMED	TOP OF PIPE					
PR-10	OU-6				RECLAIMED	TOP OF PIPE					
PR-11	OU-6				RECLAIMED	TOP OF PIPE					
PR-12	OU-6				RECLAIMED	TOP OF PIPE					
PR-13	OU-6				RECLAIMED	TOP OF PIPE					
PR-14	OU-6				RECLAIMED	TOP OF PIPE					
PR-15	OU-6				RECLAIMED	TOP OF PIPE					
PR-16	OU-7				RECLAIMED	TOP OF PIPE					
PR-17	OU-7				RECLAIMED	TOP OF PIPE					
PR-18	OU-7				RECLAIMED	TOP OF PIPE					
PR-19	OU-7				RECLAIMED	TOP OF PIPE					
PR-20	OU-7				RECLAIMED	TOP OF PIPE					

- NOTES:
- CONTRACTOR TO POPULATE ASSET TABLES AND SUBMIT WITH MONTHLY PAY APPLICATIONS AND AS-BUILT DRAWINGS.
 - CONTRACTOR TO SUBMIT FOR APPROVAL PRIOR TO PROJECT WALK THROUGH.
 - CONTRACTOR TO SUBMIT POPULATED ASSET TABLES ELECTRONICALLY WITH RECORD DRAWINGS.

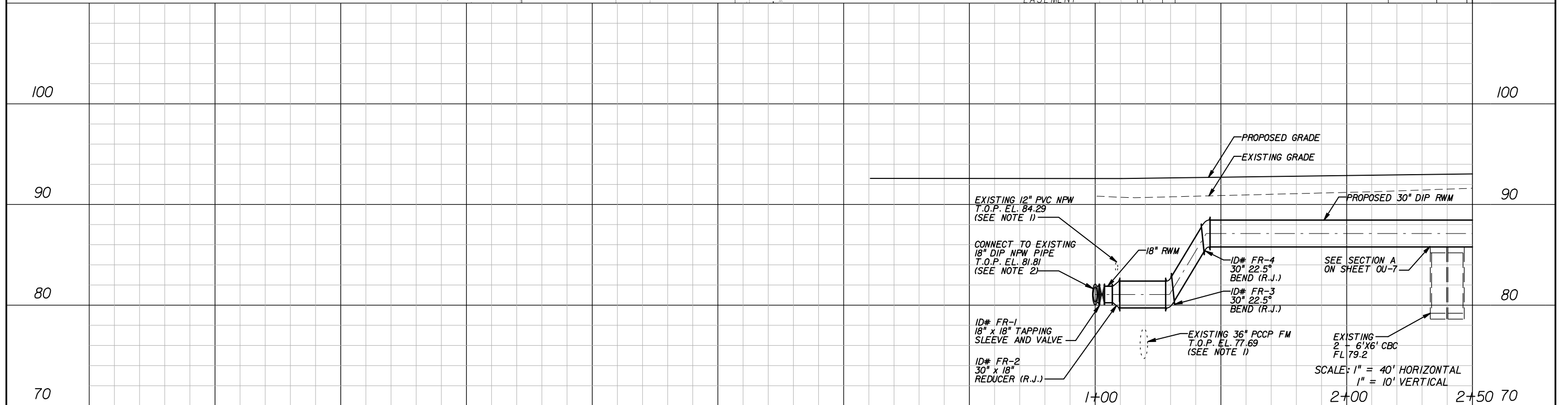
<table border="1"> <caption>REVISIONS</caption> <thead> <tr> <th>DATE</th> <th>BY</th> <th>DESCRIPTION</th> <th>DATE</th> <th>BY</th> <th>DESCRIPTION</th> </tr> </thead> <tbody> <tr> <td> </td> <td> </td> <td> </td> <td> </td> <td> </td> <td> </td> </tr> </tbody> </table>						DATE	BY	DESCRIPTION	DATE	BY	DESCRIPTION							<p>Engineer of Record: RAJ SINGH P.E. #4120</p> <p>ATKINS License No. 24 482 South Keller Road Orlando, FL 32810 (407) 647-7275 www.pbsj.com</p>		<p>ORANGE COUNTY GOVERNMENT FLORIDA</p>		<p>CANADIAN COURT / JOHN YOUNG PARKWAY CONNECTOR ROADWAY</p> <p>PROJ. NO. 5089 - SEC. 1B/2A</p>		<p>ASSET ATTRIBUTE TABLE PROPOSED UTILITIES</p>		<p>SHEET NO. OU-3</p>	
DATE	BY	DESCRIPTION	DATE	BY	DESCRIPTION																						

5/11/2016
5:02:34 PM

Q:\Cadd\JYPC Final Electronic Deliverables\Section 1B-2A-Final(4-28-2016)\Microstation\Utilities\04



NOTE:
1. CONTRACTOR SHALL ADJUST VALVE BOX OF EXISTING VALVE TO MATCH FINAL GRADE.
2. CONTRACTOR TO FIELD VERIFY LOCATION OF EXISTING UTILITIES PRIOR TO CONSTRUCTION



REVISIONS					
DATE	BY	DESCRIPTION	DATE	BY	DESCRIPTION

Engineer of Record:
ATKINS
License No. 24
482 South Keller Road
Orlando, FL 32810
(407) 647-7275
www.pbsj.com



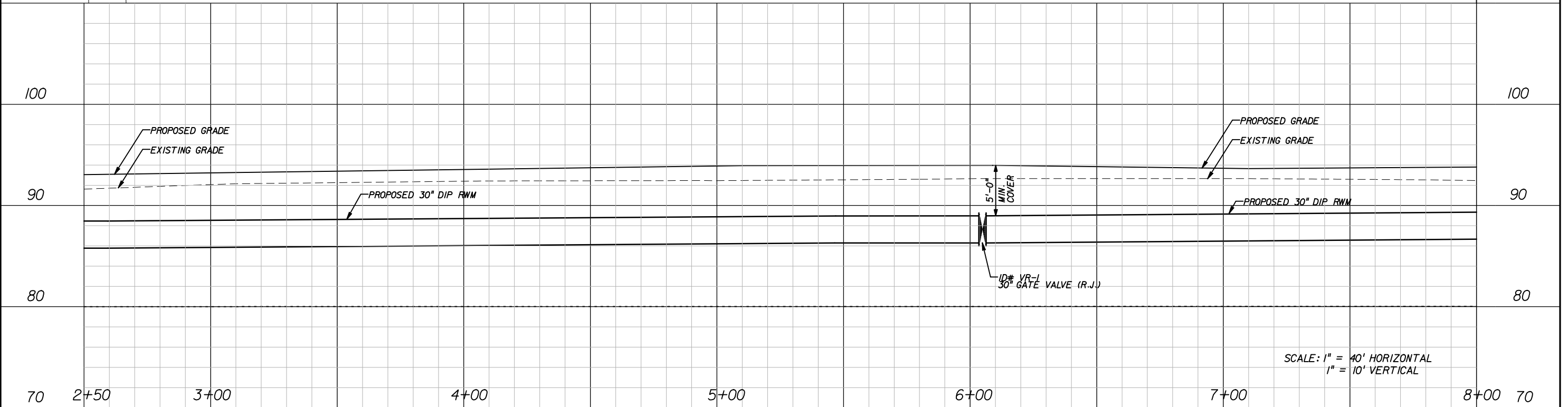
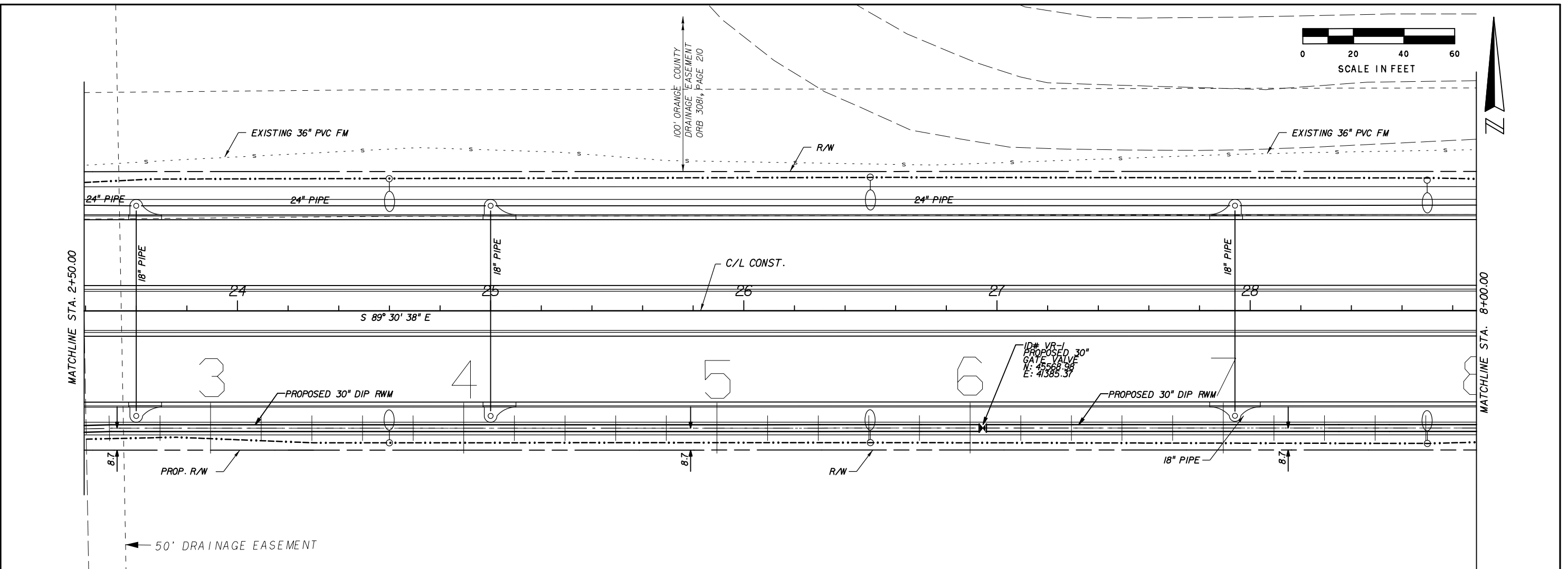
CANADIAN COURT /
JOHN YOUNG PARKWAY
CONNECTOR ROADWAY
PROJ. NO. 5089 - SEC. 1B/2A

RECLAIMED WATER PLAN AND PROFILE
1+00.00 TO 2+50.00

SHEET NO.
OU-4

5/11/2016
4:58:42 PM

Q:\Cadd\JYPC Final Electronic Deliverables\Section 1B-2A-Final(4-28-2016)\Microstation\Utilities\05



REVISIONS					
DATE	BY	DESCRIPTION	DATE	BY	DESCRIPTION

Engineer of Record:
ATKINS
License No. 24
482 South Keller Road
Orlando, FL 32810
(407) 647-7275
www.pbsj.com



CANADIAN COURT/
JOHN YOUNG PARKWAY
CONNECTOR ROADWAY
PROJ. NO. 5089 - SEC. 1B/2A

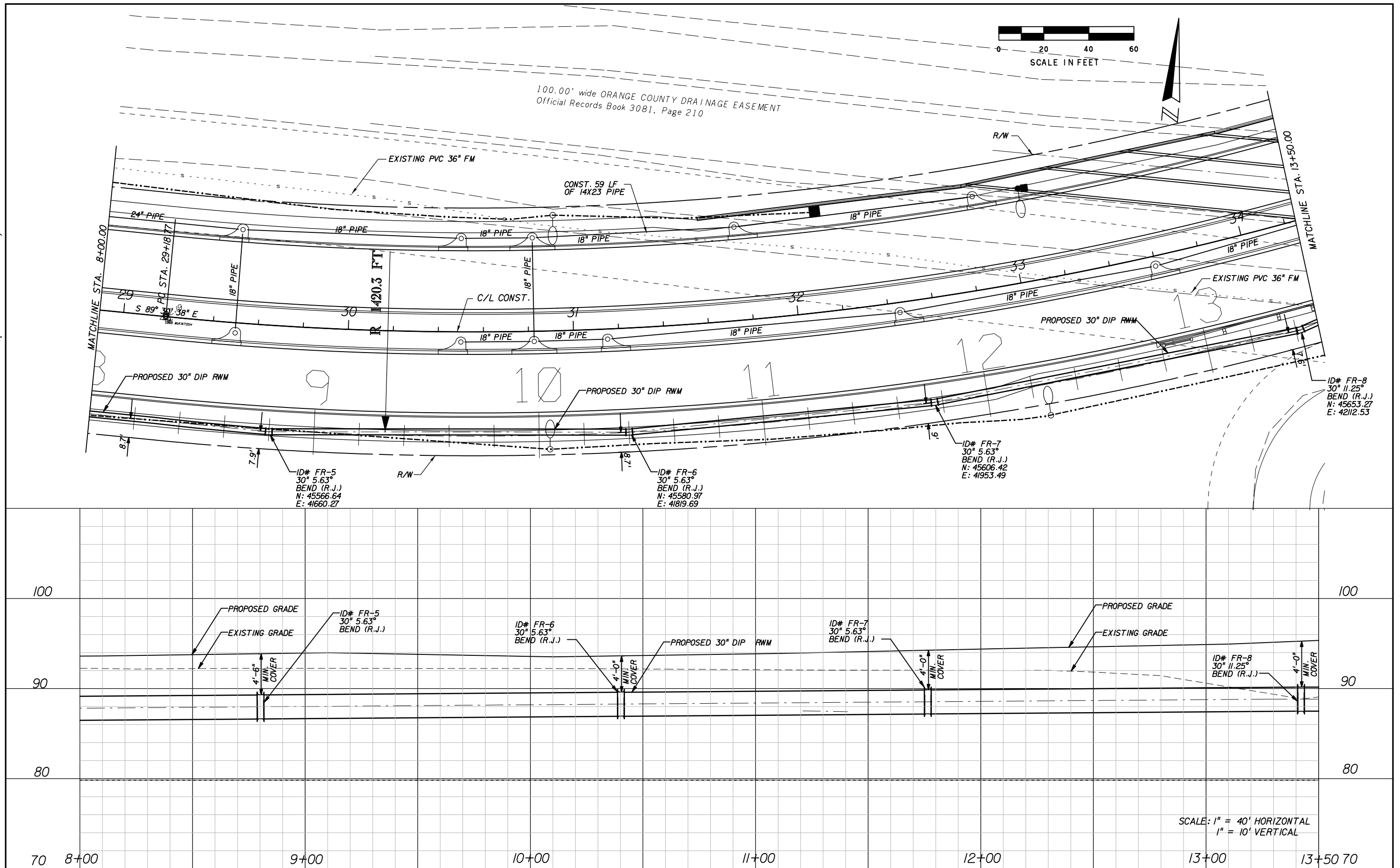
RECLAIMED WATER PLAN AND PROFILE
2+50.00 TO 8+00.00

SHEET NO.
OU-5

SCALE: 1" = 40' HORIZONTAL
1" = 10' VERTICAL

5/11/2016
4:27:28 PM

Q:\Cadd\JYPC Final Electronic Deliverables\Section 1B-2A-Final(4-28-2016)\Microstation\Utilities\06



REVISIONS					
DATE	BY	DESCRIPTION	DATE	BY	DESCRIPTION

Engineer of Record:
ATKINS
License No. 24
482 South Keller Road
Orlando, FL 32810
(407) 647-7275
www.pbsj.com

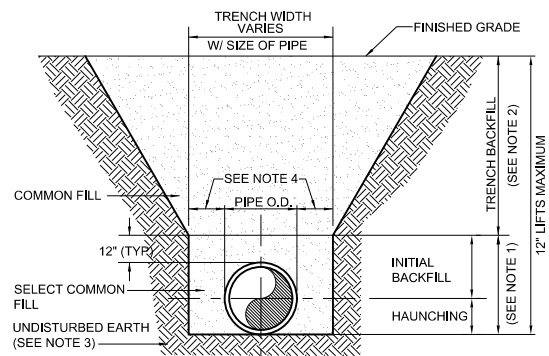


CANADIAN COURT/
JOHN YOUNG PARKWAY
CONNECTOR ROADWAY
PROJ. NO. 5089 - SEC. 1B/2A

RECLAIMED WATER PLAN AND PROFILE
8+00.00 TO 13+50.00

SHEET NO.
OU-6

APPENDIX A STANDARD DRAWINGS GENERAL
DATE: February 11, 2011 BEDDING AND TRENCHING - TYPE B FIGURE A102



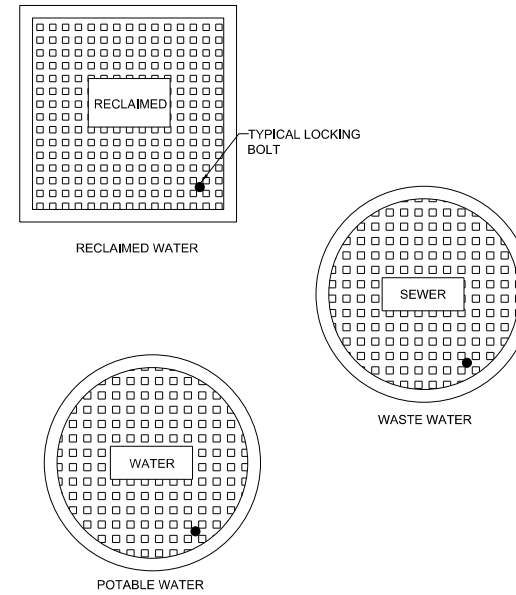
- NOTES:
- INITIAL BACKFILL AND HAUNCHING: SELECT COMMON FILL COMPACTED TO 95% (98% UNDER PAVEMENT) OF THE MAXIMUM DENSITY AS PER AASHTO T-180.
 - TRENCH BACKFILL: COMMON FILL COMPACTED TO 95% (98% UNDER PAVEMENT) OF THE MAXIMUM DENSITY AS PER AASHTO T-180.
 - PIPE BEDDING UTILIZING SELECT COMMON FILL OR BEDDING ROCK IN ACCORDANCE WITH TYPE A BEDDING AND TRENCHING DETAIL MAY BE REQUIRED AS DIRECTED BY UTILITIES.
 - 15" MAX. (12" MIN.) FOR PIPE DIAMETER LESS THAN 24" AND 24" MAX (12" MIN) FOR PIPE DIAMETER 24" AND LARGER.
 - WATER SHALL NOT BE PERMITTED IN THE TRENCH DURING CONSTRUCTION.
 - ALL PIPE TO BE INSTALLED WITH BELL FACING UPSTREAM TO THE DIRECTION OF THE FLOW.
 - FINAL RESTORATION IN IMPROVED AREAS SHALL BE IN COMPLIANCE WITH ALL APPLICABLE REGULATIONS OF GOVERNING AGENCIES. SURFACE RESTORATION WITHIN ORANGE COUNTY RIGHT-OF-WAY SHALL COMPLY WITH REQUIREMENTS OF RIGHT-OF-WAY UTILIZATION REGULATIONS AND ROAD CONSTRUCTION SPECIFICATIONS.

APPENDIX A STANDARD DRAWINGS GENERAL
DATE: February 11, 2011 RESTRAINED PIPE TABLE WATER AND RECLAIMED WATER MAINS FIGURE A104-1

TYPE	MINIMUM LENGTH (FT) TO BE RESTRAINED ON EACH SIDE OF FITTING(S)									
	PIPE SIZE									
	4"	6"	8"	10"	12"	16"	20"	24"	30"	36"
90° BEND	25	36	46	55	64	65	77	89	105	120
45° BEND	10	15	19	23	26	27	32	37	44	50
22-1/2° BEND	5	8	9	11	13	13	15	18	21	24
11-1/4° BEND	3	4	5	6	8	7	8	9	10	12
PLUG OR BRANCH OF TEE	53	74	97	117	135	138	166	194	231	265
VALVE	27	38	49	59	68	69	83	97	116	133
REDUCER	VARIES BY SIZE; TO BE DETERMINED BY THE DESIGN ENGINEER.									

- NOTES:
- FITTINGS SHALL HAVE RESTRAINED JOINTS UNLESS OTHERWISE INDICATED.
 - INSTALL FULL LENGTH JOINTS WITH TOTAL LENGTH EQUAL TO OR GREATER THAN LENGTH SHOWN IN THE TABLE.
 - WHERE TWO OR MORE FITTINGS ARE IN SERIES, SELECT FITTING RESTRAINT LENGTH THAT YIELDS THE LONGEST RESTRAINT DISTANCE.
 - ALL INLINE VALVES SHALL BE RESTRAINED.
 - WHERE INTERNAL RESTRAINED JOINTS ARE USED, THE ENTIRE BELL SHALL BE PAINTED RED.
 - LENGTHS SHOWN IN THE TABLE WERE CALCULATED IN ACCORDANCE WITH PROCEDURES OUTLINED IN "THRUST RESTRAINT DESIGN FOR DUCTILE IRON PIPE" GUIDELINES PUBLISHED BY DIPRA, USING THE ASSUMPTIONS SHOWN BELOW:
WORKING PRESSURE: 150 PSI
SOIL DESIGNATION: SM (SAND SILT)
LAYING CONDITIONS: 3
DEPTH OF COVER: 3 FT
SAFETY FACTOR: 1.5
CONVERSION FACTOR FOR PVC PIPE: 1.25
- THE DESIGN ENGINEER SHALL INCREASE THE VALUES IN THE TABLE AS WARRANTED BY SITE-SPECIFIC SOIL DESIGNATIONS, LAYING CONDITIONS, PIPE MATERIAL, ETC. FOR DIP ENCASED IN POLYETHYLENE, INCREASE THE GIVEN VALUE BY A FACTOR OF 1.25.

APPENDIX A STANDARD DRAWINGS GENERAL
DATE: February 11, 2011 TYPICAL VALVE BOX COVER FIGURE A110



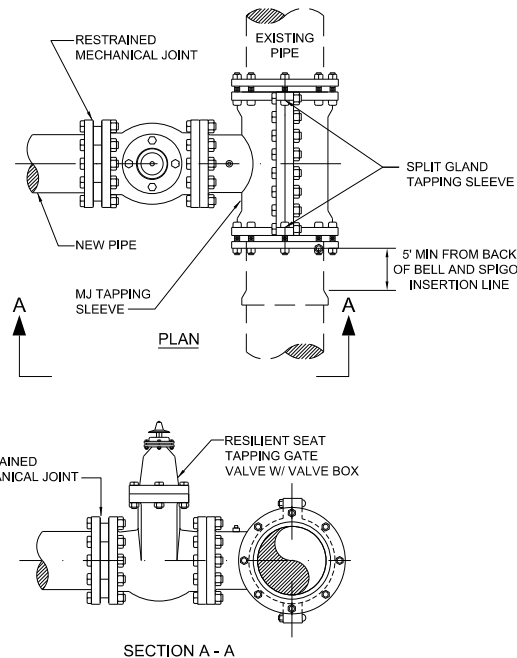
- NOTE:
1. LOCKING LIDS ARE REQUIRED ON ALL VALVE BOXES.

APPENDIX A STANDARD DRAWINGS GENERAL
DATE: February 11, 2011 SEPARATION REQUIREMENTS FOR WATER, WASTEWATER AND RECLAIMED WATER MAINS FIGURE A116

PROPOSED UTILITY	HORIZONTAL & VERTICAL SEPARATION REQUIREMENTS							
	POTABLE WATER		RECLAIMED WATER		WASTEWATER (GRAVITY & FM)		STORM SEWER	
	HORIZ	VERT	HORIZ	VERT	HORIZ	VERT	HORIZ	VERT
POTABLE WATER	3' NOTE 1	12"	3' NOTE 1 & 3	12" NOTE 3	6' NOTE 3	12" NOTE 3	3' NOTE 1 & 3	12"/18" NOTE 2 & 3
RECLAIMED WATER	3' NOTE 1 & 3	12" NOTE 3	3' NOTE 1	12"	3' NOTE 1	12"	3' NOTE 1	12"/18" NOTE 2
WASTEWATER (GRAVITY AND FM)	6' NOTE 3	12" NOTE 3	3' NOTE 1	12"	3' NOTE 1	12"	3' NOTE 1	12"/18" NOTE 2
RIGHT OF WAY	3' NOTE 1	N/A	3' NOTE 1	N/A	3' NOTE 1	N/A	N/A	N/A

- NOTES:
- THIS SEPARATION REQUIREMENT IS TO PROVIDE ACCESSIBILITY FOR CONSTRUCTION AND MAINTENANCE. THREE FEET OF HORIZONTAL SEPARATION IS THE MINIMUM FOR PIPES WITH THREE FEET OF COVER. FOR PIPES INSTALLED AT GREATER DEPTHS, PROVIDE AN ADDITIONAL FOOT OF SEPARATION FOR EACH ADDITIONAL FOOT OF DEPTH.
 - THE 18-INCH SEPARATION REQUIREMENT APPLIES WHEN THE STORM PIPE CROSSES ABOVE THE OCU MAIN, AND WHEN THE STORM PIPE HAS A DIAMETER EQUAL TO OR GREATER THAN 24 INCHES. OTHERWISE, THE REQUIRED SEPARATION IS 12 INCHES.
 - THIS SEPARATION REQUIREMENT COMPLIES WITH MINIMUM FDEP SEPARATION REQUIREMENTS OUTLINED IN 62-555.314, FAC. VARIANCES FROM THE FDEP REQUIREMENTS MUST COMPLY WITH 62-555.314(5), FAC AND MUST BE APPROVED INDIVIDUALLY BY BOTH FDEP AND OCU.
 - DISTANCES GIVEN ARE FROM OUTSIDE OF PIPE TO OUTSIDE OF PIPE.
 - NO WATER PIPE SHALL PASS THROUGH OR COME IN CONTACT WITH ANY PART OF SANITARY OR STORM WATER MANHOLE OR STRUCTURE.

APPENDIX A STANDARD DRAWINGS GENERAL
DATE: February 11, 2011 MJ TAPPING SLEEVE AND GATE VALVE ASSEMBLY FOR WATER AND RECLAIMED WATER FIGURE A121-1



12/3/2015
10:13:38 AM
Q:\Cadd\JYPConnectorRd\Section1B\utils\08_rudetails1_0U-8.dgn

REVISIONS					
DATE	BY	DESCRIPTION	DATE	BY	DESCRIPTION
3/16/06	WPN	REISSUED PLANS FOR PORTION OF SEC. 2 EAST OF UNIVERSAL BLVD.			

Engineer of Record: **RAJ SINGH**
P.E. #41210

ATKINS
License No. 24

482 South Keller Road
Orlando, FL 32810
(407) 647-7275
www.pbsj.com

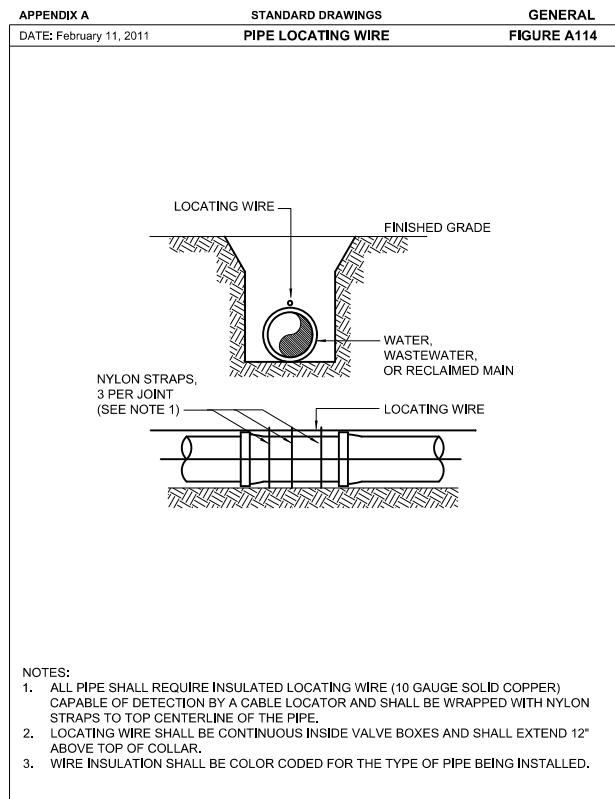
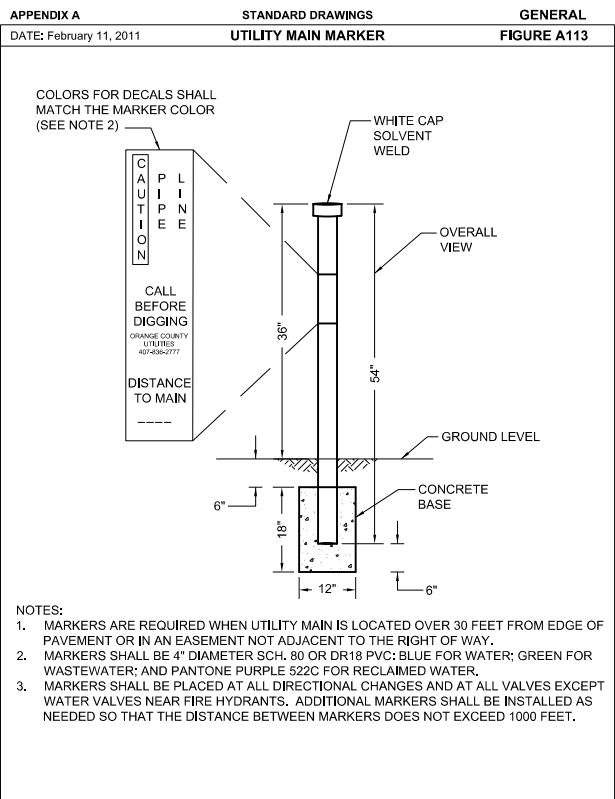
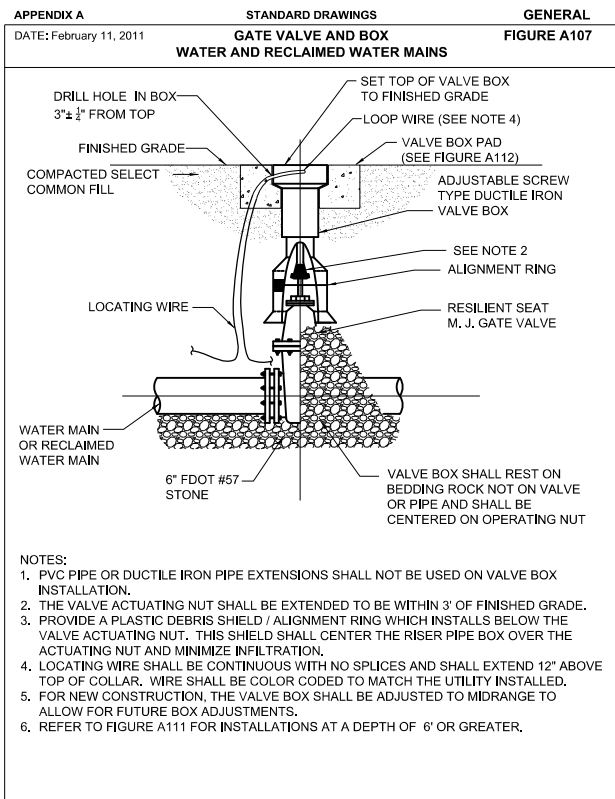
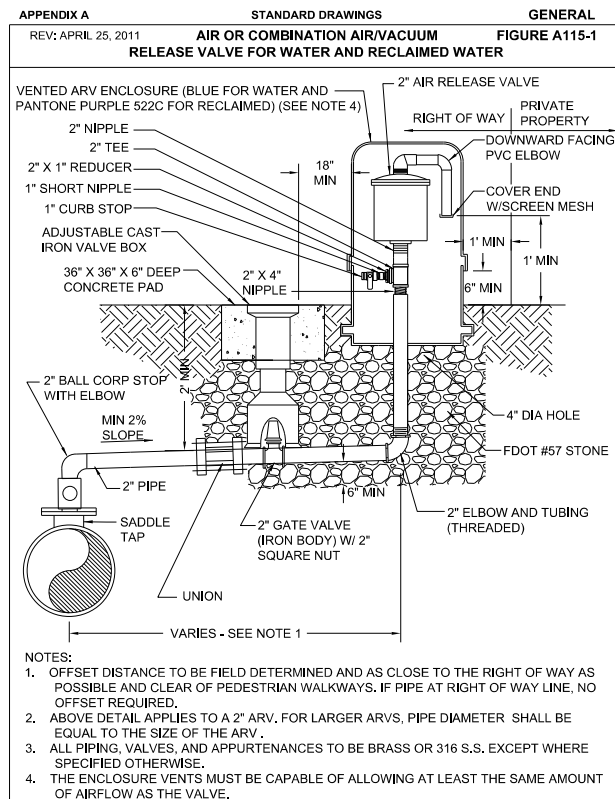
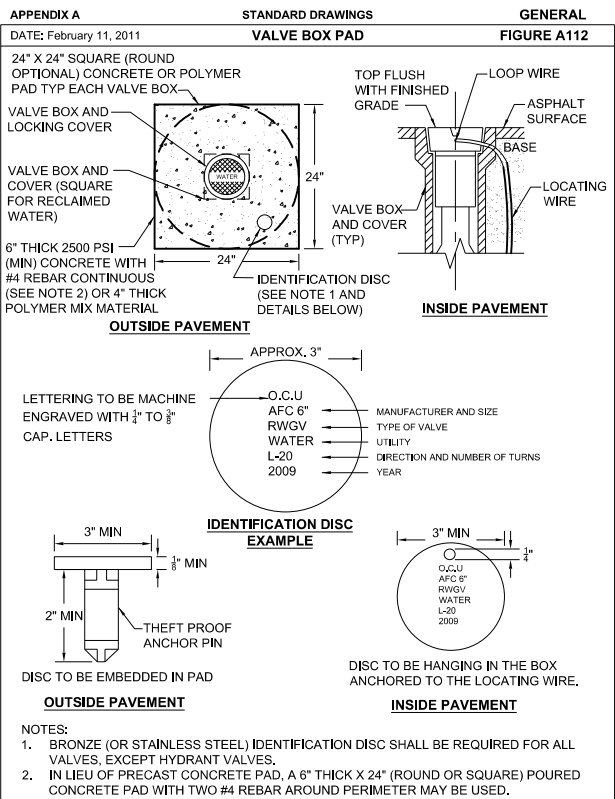
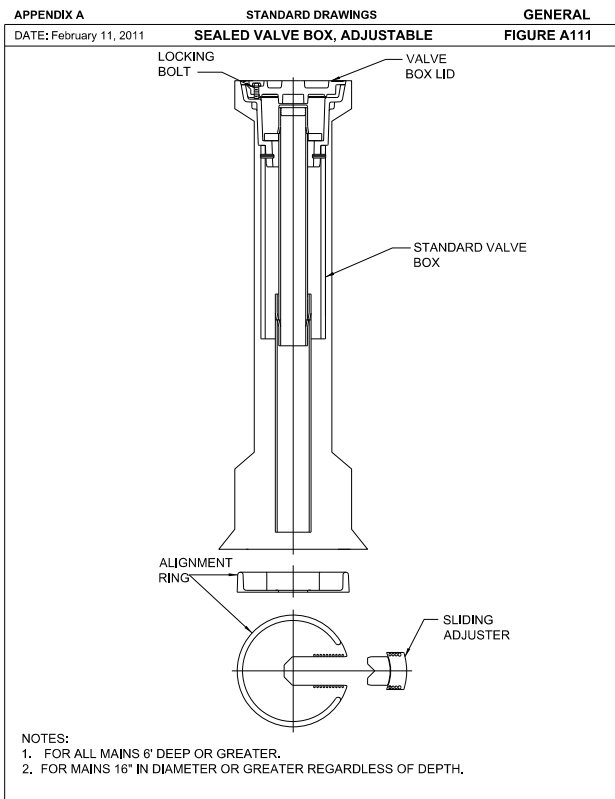


CANADIAN COURT/
JOHN YOUNG PARKWAY
CONNECTOR ROADWAY

PROJ. NO. 5089 - SEC. 1B/2A

**GENERAL NOTES & DETAILS
PROPOSED UTILITIES**

SHEET NO. **0U-8**



REVISIONS

DATE	BY	DESCRIPTION	DATE	BY	DESCRIPTION

Engineer of Record: **RAJ SINGH**
P.E. #41210

ATKINS
License No. 24
482 South Keller Road
Orlando, FL 32810
(407) 647-7275
www.pbsj.com



CANADIAN COURT /
JOHN YOUNG PARKWAY
CONNECTOR ROADWAY

PROJ. NO. 5089 - SEC. 1B/2A

GENERAL NOTES AND DETAIL
PROPOSED UTILITIES

SHEET NO.
OU-9

12/3/2015 10:14:45 AM Q:\Cadd\JYPConnectorRd\Section1B\utils\09_rudetails2_OU-9.dgn