

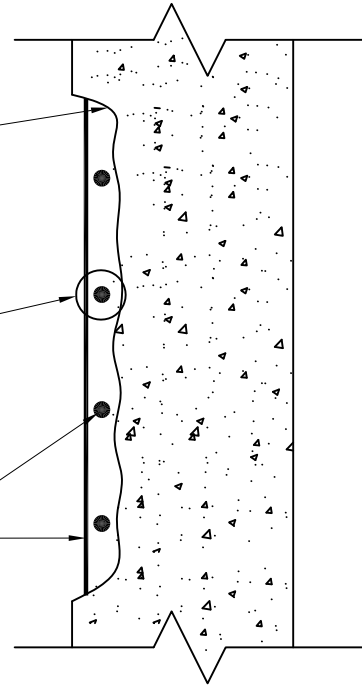
CONCRETE REPAIR No. 1

PREP:

SAW CUT PERIMETER 1/2" MAXIMUM, DO NOT CUT STEEL

REMOVE MINIMUM 1/2" BEHIND STEEL FOR MORTAR ONLY

SANDBLAST STEEL TO REMOVE CORROSION. SPLICE WHERE GREATER THAN 15%-25% SECTION LOSS



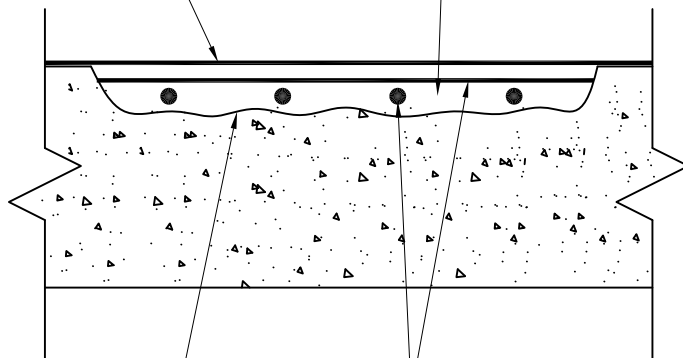
HORIZONTAL, VERTICAL AND OVERHEAD

N.T.S.

APPLICATION:

FORMED OR HAND-APPLIED SURFACE COATING

REPAIR MORTAR



BONDING BRIDGE

ANTI-CORROSION

ACAD FILE # 15036.01N101

DATE: ..

PLOT SCALE : 3" = 1'-0"

PROJECT NUMBER: 15036.01



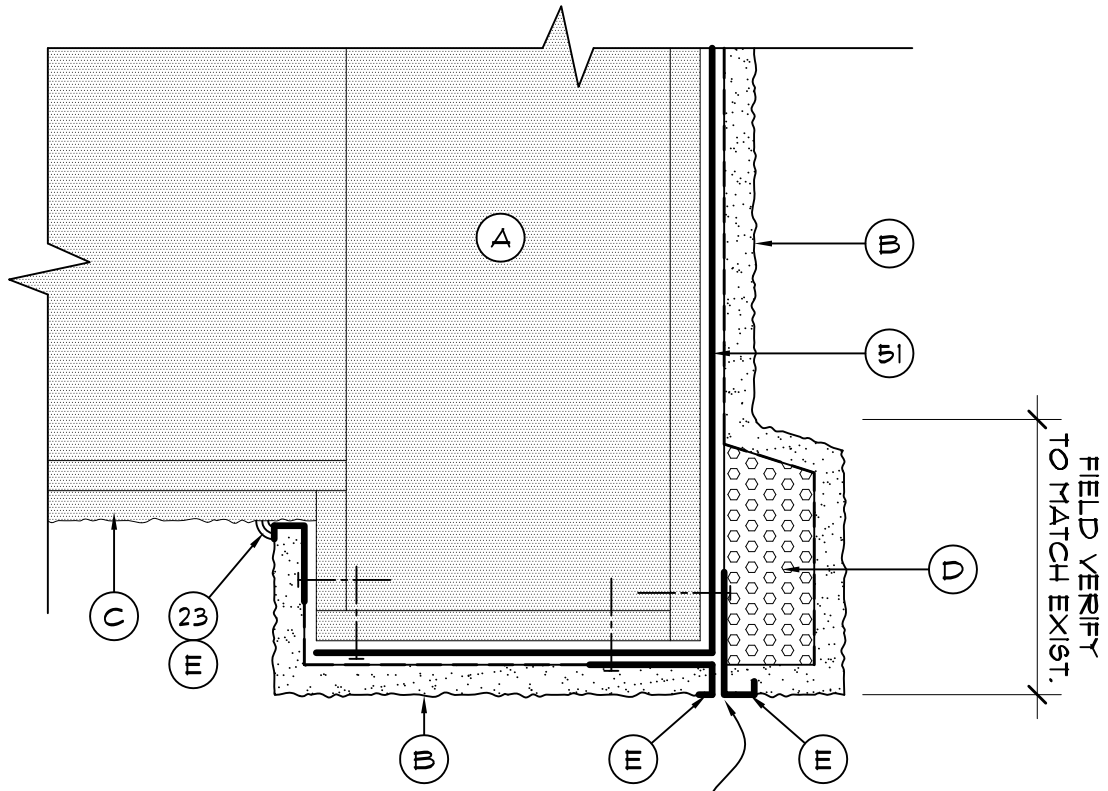
A/R/C Associates Incorporated

601 NORTH FERN CREEK AVENUE SUITE 100
ORLANDO, FLORIDA 32803-4899
TEL (407)896-7875 FAX (407)898-6043

TITLE CONCRETE REPAIR NO. 1

SCALE N.T.S.



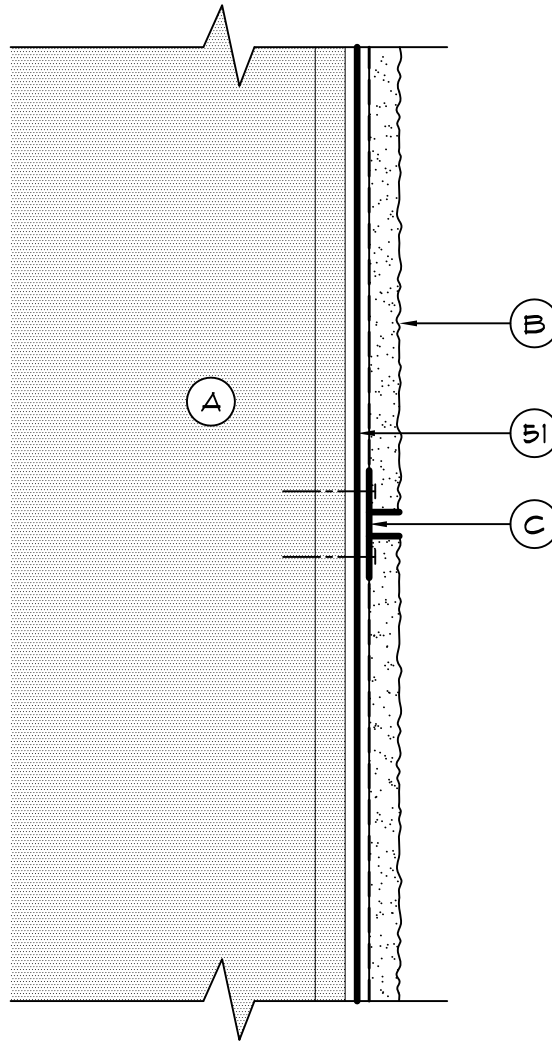


- 23. SEALANT
- 51. WATERPROOFING BARRIER
- A. EXIST. METAL FRAME STRUCTURE
- B. 7/8" STUCCO OVER METAL LATH
- C. EXIST. STUCCO TO REMAIN
- D. NEW EXTRUDED FOAM TRIM W/
STUCCO FINISH TO MATCH
EXISTING IN DIMENSION AND
FINAL FINISH
- E. NEW VINYL STUCCO CASING
BEAD AND ACCESSORIES
FASTENED PER MFR
REQUIREMENTS - FOR TYPICAL
INSTALLATION SEE DOCUMENT
SPECIFICATIONS

NOTE: FOR ALL WATERPROOFING BARRIER INSTALLATION DETAILS, REFER TO DETAILS (P9.01), (P9.02) AND (P9.03).

NOTE: STUCCO ACCESSORIES RELEVANT TO WATERPROOFING AND TERMINATION ARE SHOWN. ALL OTHERS ARE REQUIRED AS IF SHOWN.





- 51. WATERPROOFING BARRIER
- A. EXIST. METAL FRAME STRUCTURE
- B. 7/8" STUCCO OVER METAL LATH
- C. NEW VINYL STUCCO REVEAL AND ACCESSORIES FASTENED PER MFR REQUIREMENTS - FOR TYPICAL INSTALLATION SEE DOCUMENT SPECIFICATIONS

NOTE: FOR ALL WATERPROOFING BARRIER INSTALLATION DETAILS, REFER TO DETAILS (P9.01), (P9.02) AND (P9.03).

NOTE: STUCCO ACCESSORIES RELEVANT TO WATERPROOFING AND TERMINATION ARE SHOWN. ALL OTHERS ARE REQUIRED AS IF SHOWN.



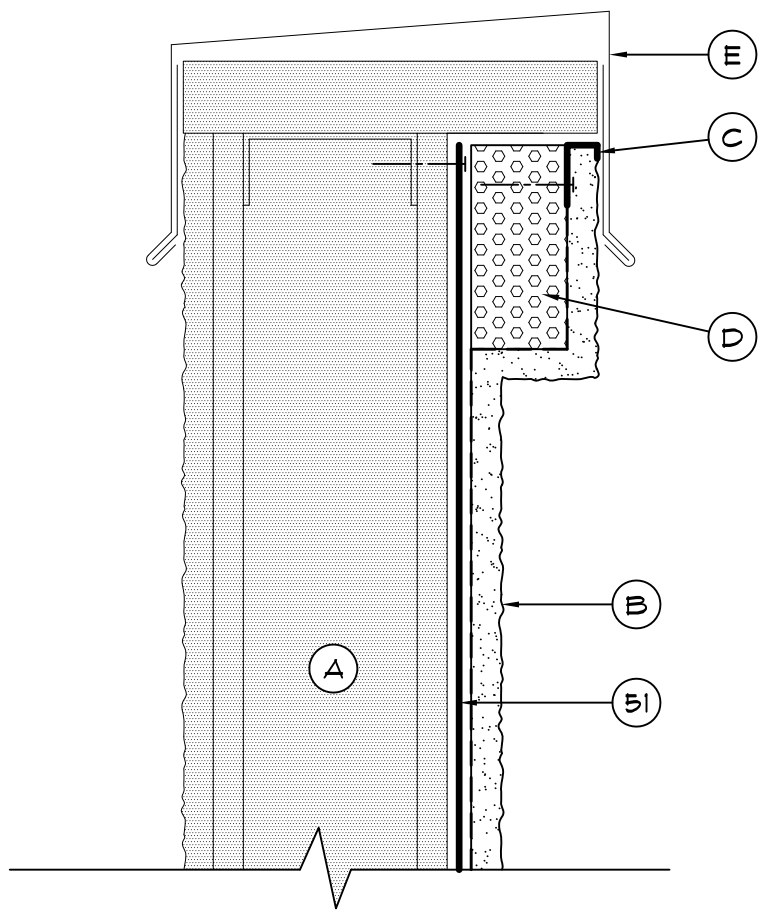
A/R/C Associates Incorporated

601 NORTH FERN CREEK AVENUE SUITE 100
 ORLANDO, FLORIDA 32803-4899
 TEL (407)896-7875 FAX (407)898-6043

TITLE STUCCO INSTALLATION AT
 FIELD OF ELEV. DETAIL

SCALE 3" = 1'-0"



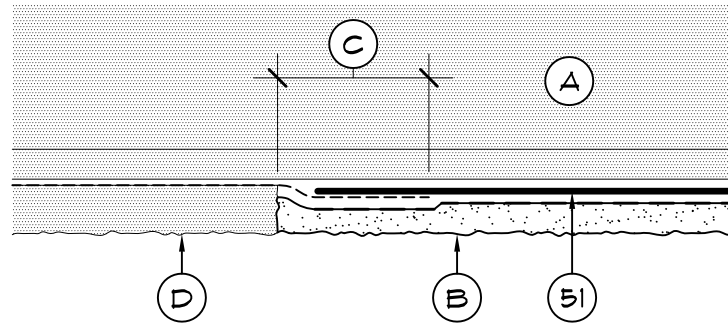


- 51. WATERPROOFING BARRIER
- A. EXIST. METAL FRAME STRUCTURE
- B. 7/8" STUCCO OVER METAL LATH
- C. NEW VINYL STUCCO STOP AND ACCESSORIES FASTENED PER MFR REQUIREMENTS - FOR TYPICAL INSTALLATION SEE DOCUMENT SPECIFICATIONS
- D. NEW EXTRUDED FOAM TRIM W/ STUCCO FINISH TO MATCH EXISTING IN DIMENSION AND FINAL FINISH
- E. EXIST. COPING AND BLOCKING TO REMAIN

NOTE: FOR ALL WATERPROOFING BARRIER INSTALLATION DETAILS, REFER TO DETAILS (P3.01), (P3.02) AND (P3.03).

NOTE: STUCCO ACCESSORIES RELEVANT TO WATERPROOFING AND TERMINATION ARE SHOWN. ALL OTHERS ARE REQUIRED AS IF SHOWN.





- 51. WATERPROOFING BARRIER
- A. EXIST. METAL FRAME STRUCTURE
- B. 7/8" STUCCO OVER METAL LATH
- C. OVERLAP EXIST. LATH 2" MIN. OVER THE NEW LATH TO TIE INTO THE EXISTING STUCCO SYSTEM
- D. EXIST. STUCCO TO REMAIN

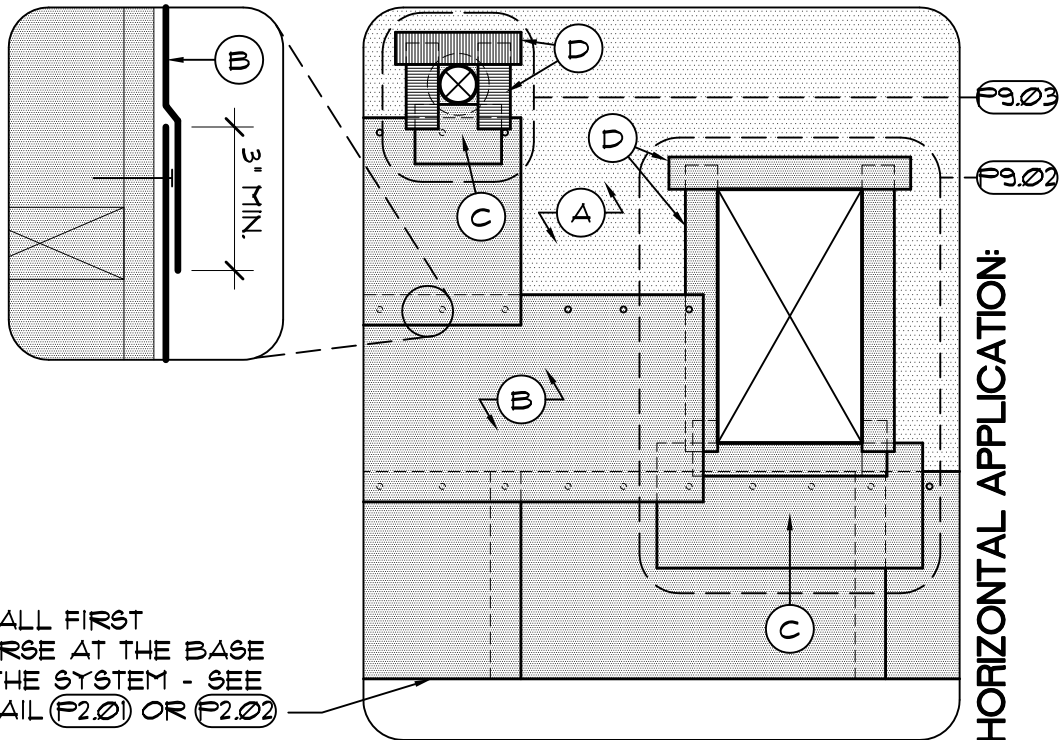
NOTE: FOR ALL WATERPROOFING BARRIER INSTALLATION DETAILS, REFER TO DETAILS (P9.01), (P9.02) AND (P9.03).



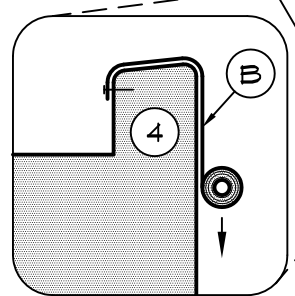
NOTE: NO BUILDING CLADDING OR FINISHES SHOWN FOR CLARITY.

INSTALL FIRST COURSE AT THE BASE OF THE SYSTEM - SEE DETAIL (F2.01) OR (F2.02)

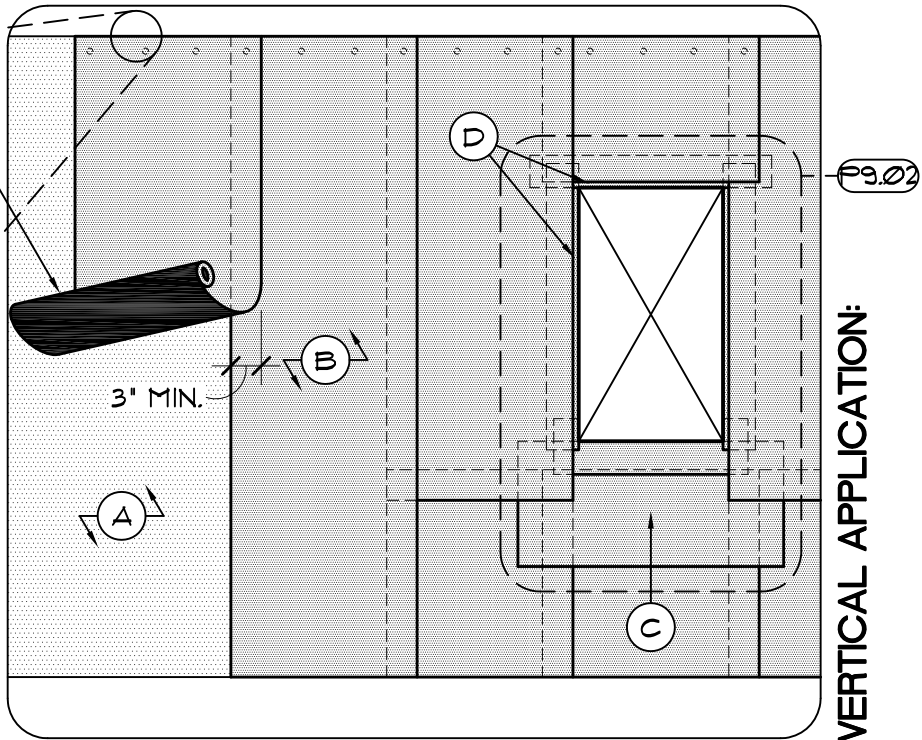
PRE-MEASURE ROLL BEFORE FASTENING TO TOP OF ROOF SYSTEM AND ROLL THE MEMBRANE DOWN TO BASE WHERE THE WALL SYSTEM TERMINATES - WHERE PENETRATIONS OCCUR RESTART MEMBRANE APPLICATION BENEATH THEM IN SIM. FASHION



HORIZONTAL APPLICATION:



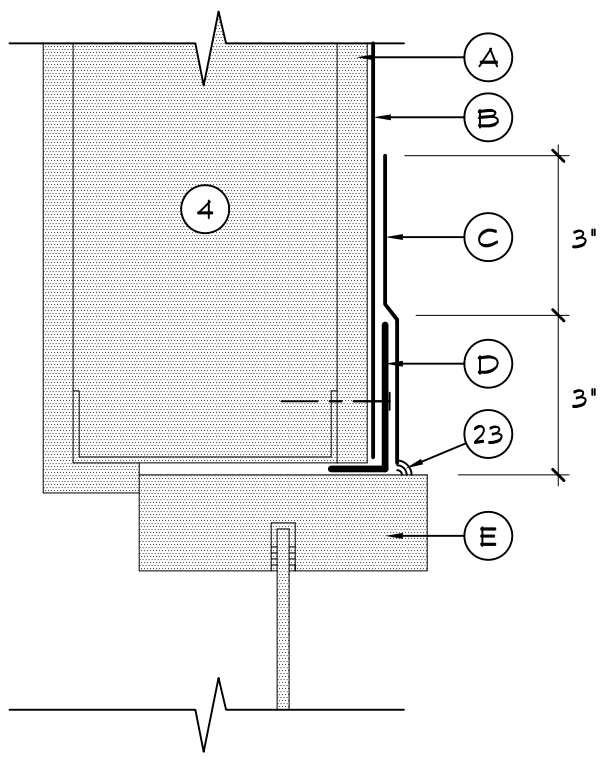
- 4. NEW PARAPET
- A. EXISTING SHEATHING
- B. SELF ADHERING WATERPROOF BARRIER TO BE INSTALLED WITH 3" MIN. LAP OVER FASTENERS & ADJOINING COURSES
- C. WATERPROOF BARRIER APRON - DO NOT APPLY COURSES OVER APRON UNLESS FROM ABOVE
- D. STRIP-IN FLASHING



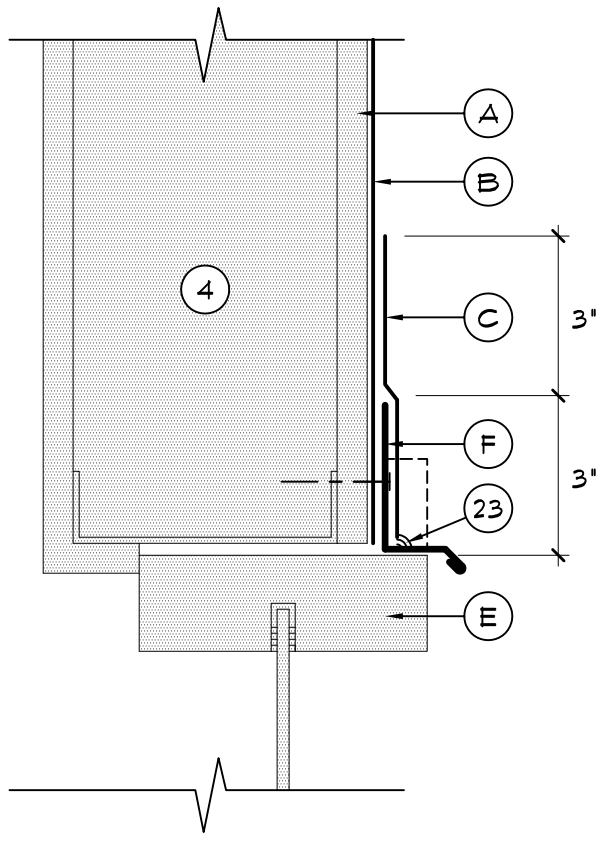
VERTICAL APPLICATION:

NOTE: BOTH FORMS (HORIZONTAL & VERTICAL APPLICATION) ARE BEING SHOWN ABOVE - SELECT APPROPRIATE APPLICATION PER ELEVATION FOR BEST APPLICATION.

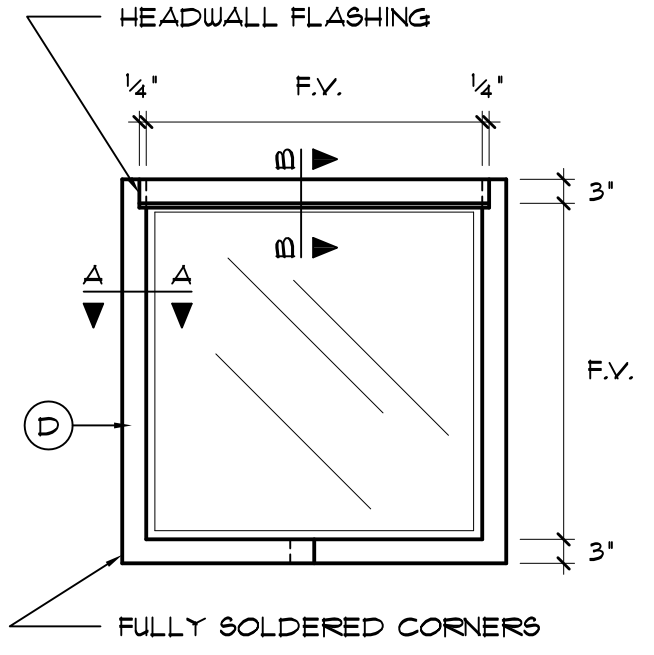




SECTION A-A



SECTION B-B



WINDOW ELEVATION

NOTE: EXTERIOR CLADDING NOT SHOWN FOR CLARITY

- 23. SEALANT
- A. EXIST. SHEATHING TO REMAIN - REPLACE WHERE DAMAGED OR DETERIORATED
- B. WATERPROOF BARRIER - INSTALLATION SEQUENCE SIM. TO DETAIL (P9.01)
- C. SELF ADHERING STRIP-IN FLASHING
- D. 1'x3' 24 GA. ST. STL. CORNER FABRICATION - FORM 2 PIECES PER WINDOW WITH SOLDERED CORNERS WITH 3" LAPS
- E. EXIST. WINDOW TO REMAIN IN-PLACE
- F. 2'x3" (F.V.) 24 GA. ST. STL. HEADWALL FLASHING WITH HEMMED DRIP EDGE AND SOLDERED END CLOSURES



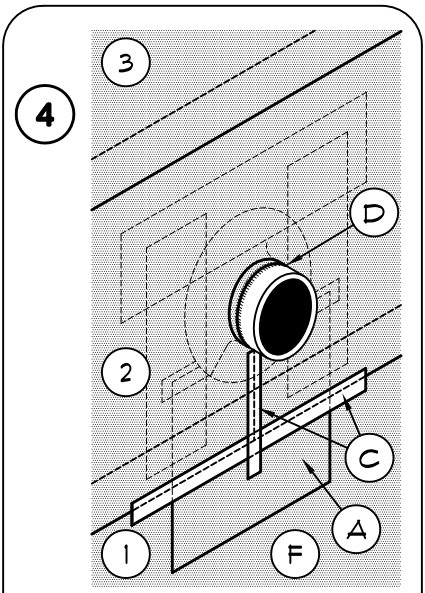
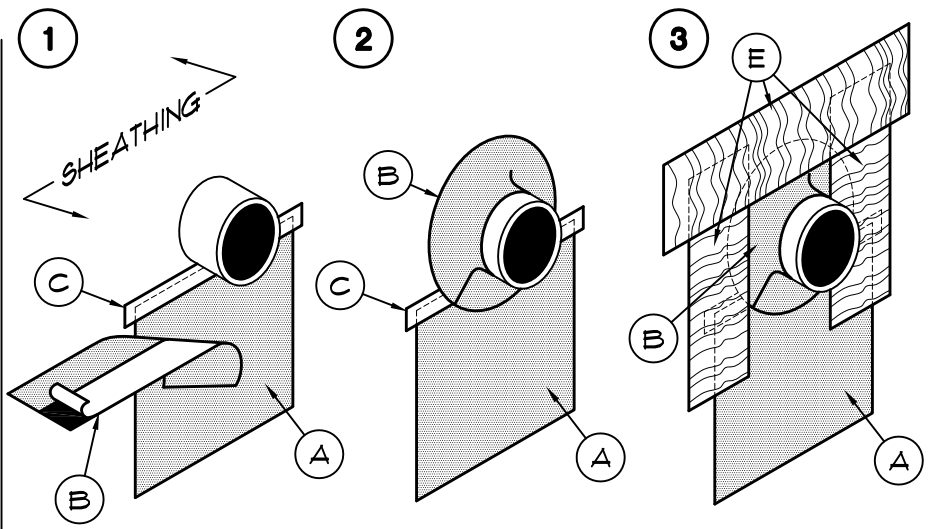
ACAD FILE # 15036.01P903

DATE:

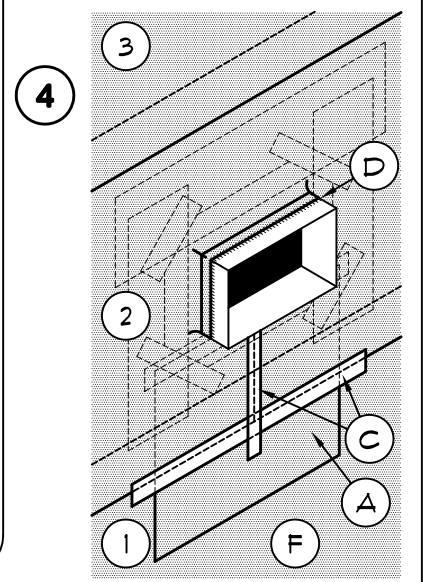
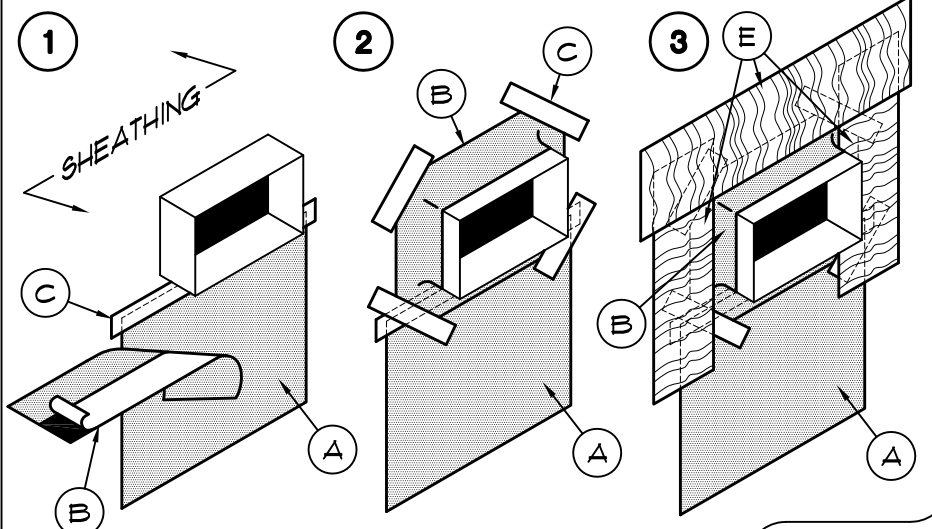
PLOT SCALE : 3" = 1'-0"

PROJECT NUMBER: 15036.01

CIRCULAR PENETRATIONS:



RECTANGULAR PENETRATIONS:



- A. WATERPROOF BARRIER APRON - EXTEND APRON 10" MIN. BEYOND EACH SIDE OF ROUGH OPENING
- B. FLEXIBLE FLASHING - REMOVE COVER AND WRAP AROUND PENETRATION - LAP ON UNDERSIDE OF PENETRATION
- C. SEALING TAPE TO HOLD CORNERS OF FLEXIBLE FLASHING DOWN AND SECURE MEMBRANE LAPS
- D. CONTINUOUS BEAD OF CAULK WHERE FLEXIBLE WRAP MEETS PENETRATION
- E. SELF ADHERING STRIP-IN FLASHING

NOTE: APPLY WATERPROOF BARRIER IN ORDER FROM 1ST TO 3RD COURSES

F. WATERPROOF BARRIER - INSTALLATION SEQUENCE SIM. TO DETAIL (P9.01)

NOTE: FOR SMALLER PENETRATIONS (SUCH AS WIRING ELEMENTS OR SMALL PIPES) EITHER ROUTE THROUGH MEMBRANE LAPS OR CUT SMALL HOLE AND SEAL WITH MFR'S APPROVED MASTIC



A/R/C Associates Incorporated
 601 NORTH FERN CREEK AVENUE SUITE 100
 ORLANDO, FLORIDA 32803-4899
 TEL (407)896-7875 FAX (407)898-6043

TITLE RECTANGULAR & CIRCULAR PENETRATION FLASHING

SCALE N.T.S.

NO. P9.03

ACAD FILE # 15036.0|R101

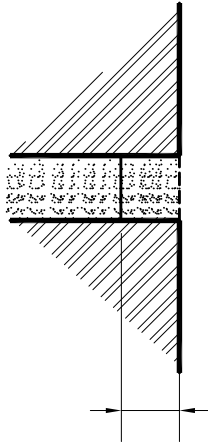
DATE: ..

PLOT SCALE : 3" = 1'-0"

PROJECT NUMBER: 15036.0

BRICK MASONRY TUCK POINTING DETAILS

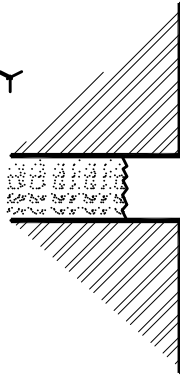
EXISTING:



MORTAR JOINT
STYLE MAY VARY

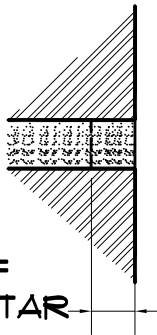
EXTENT OF
SOFT MORTAR
VARIES

PREP.:



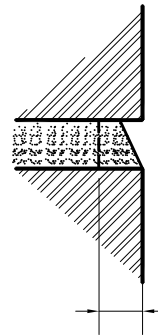
ROUT JOINT BACK TO
SOLID DRY MORTAR

PROPOSED:

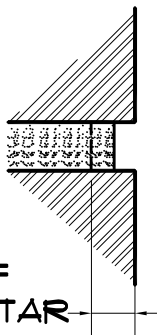


"FLUSH"

EXTENT OF
SOFT MORTAR
VARIES

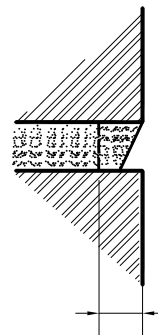


"WEATHERED"



"RAKED"

EXTENT OF
SOFT MORTAR
VARIES



"STRUCK"



A/R/C Associates Incorporated
 601 NORTH FERN CREEK AVENUE SUITE 100
 ORLANDO, FLORIDA 32803-4899
 TEL (407)896-7875 FAX (407)898-6043

TITLE BRICK MASONRY TUCK
POINTING DETAILS

SCALE N.T.S.



ACAD FILE # 15036.015101

DATE: ..

PLOT SCALE : 3" = 1'-0"

PROJECT NUMBER: 15036.01

HANDRAIL STANCHION BASE REPAIR(EMBEDDED)

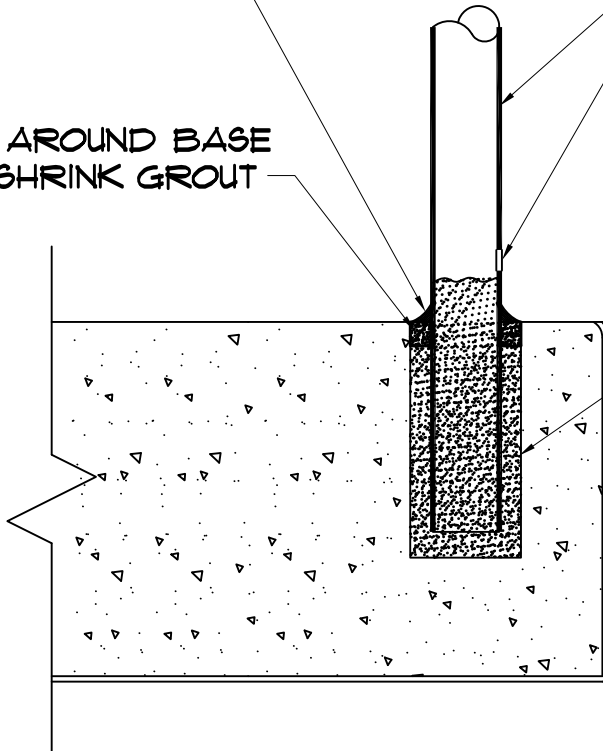
SEAL AROUND BASE WITH
A CANT BEAD OF
URETHANE

FILL VOID AROUND BASE
WITH NON-SHRINK GROUT

EXISTING GROUT

DRILL HOLE, DRAIN
WATER AND FILL WITH
NON-SHRINK GROUT TO
BOTTOM LIP OF HOLE
AS SHOWN

EXISTING GROUT



A/R/C Associates Incorporated
 601 NORTH FERN CREEK AVENUE SUITE 100
 ORLANDO, FLORIDA 32803-4899
 TEL (407)896-7875 FAX (407)898-6043

TITLE HANDRAIL STANCHION
 BASE REPAIR (EMBEDDED)

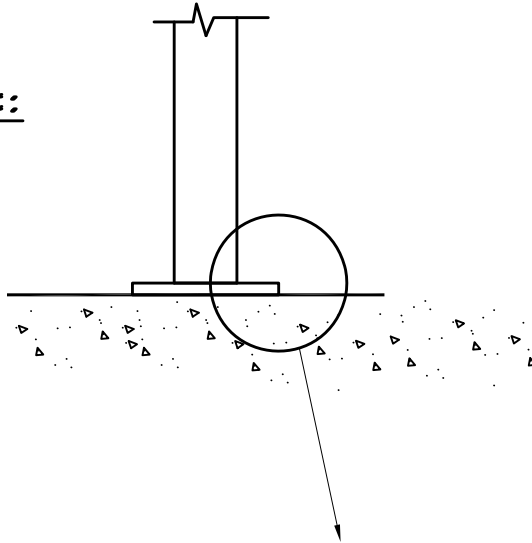
SCALE N.T.S.



PROJECT NUMBER: 15036.01
PLOT SCALE : 3" = 1'-0"
DATE: ..
ACAD FILE # 15036.01S102

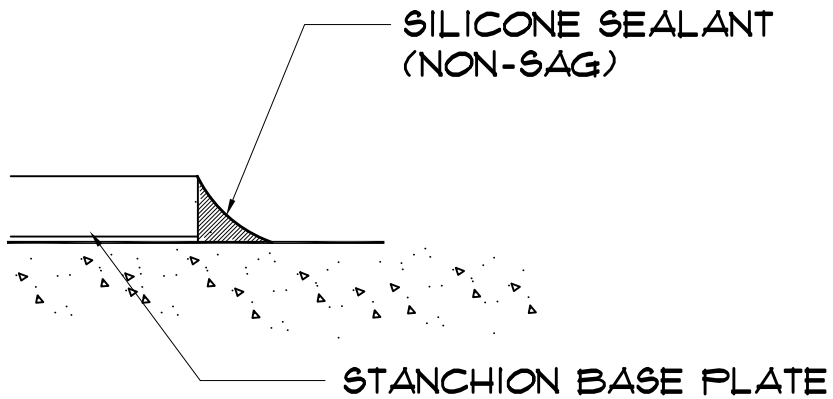
FLUSH MOUNTED STANCHION BASE REPAIR

EXISTING:



SURFACE MOUNTED:
(SEE DETAIL BELOW)

PROPOSED:



A/R/C Associates Incorporated
601 NORTH FERN CREEK AVENUE SUITE 100
ORLANDO, FLORIDA 32803-4899
TEL (407)896-7875 FAX (407)898-6043

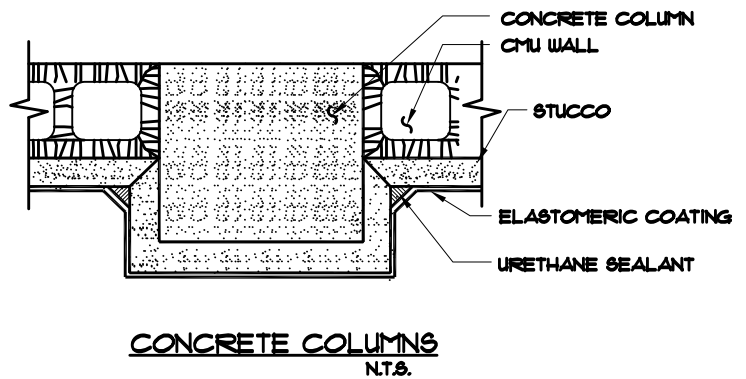
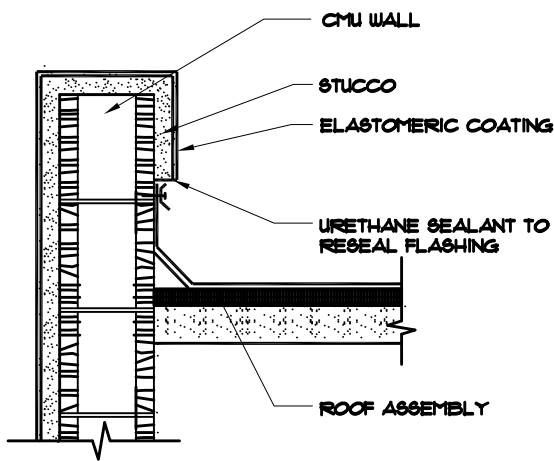
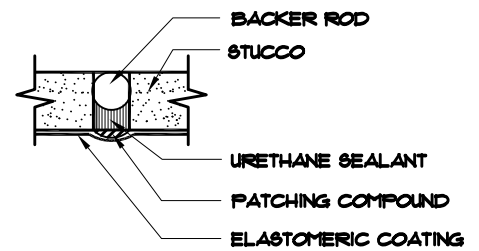
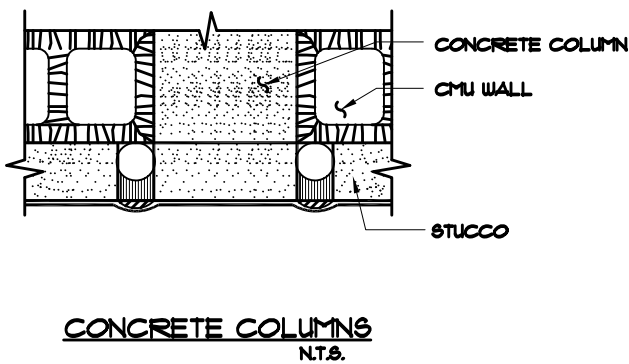
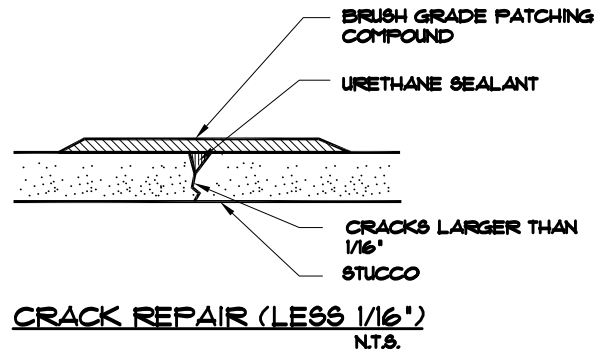
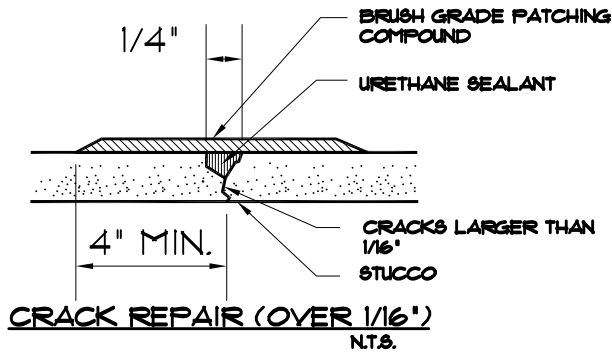
TITLE FLUSH MOUNTED STANCHION
BASE REPAIR

SCALE N.T.S.



PROJECT NUMBER: 15036.010 | PLOT SCALE: 3" = 1'-0" | DATE: .. | ACAD FILE # 15036.01010

WALL COATING DETAILS



NOTE:
 SUBSTRATE MAY BE OTHER THAN STUCCO AS SHOWN, E.G. CONCRETE, CMU, EIFS, BRICK, COATING MAY BE OTHER THAN ELASTOMERIC AS SHOWN, E.G. ACRYLIC, CLEAR SEALER, ETC.



A/R/C Associates Incorporated
 601 NORTH FERN CREEK AVENUE SUITE 100
 ORLANDO, FLORIDA 32803-4899
 TEL (407)896-7875 FAX (407)898-6043

TITLE WALL COATING DETAILS

SCALE N.T.S.



ACAD FILE # 15036.01U102

DATE: ..

PLOT SCALE : 3" = 1'-0"

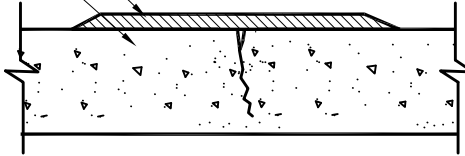
PROJECT NUMBER: 15036.01

WATERPROOF DECK COATING DETAILS

LESS THAN 1/16 INCH

MEMBRANE (55 +/-5 MILLS)

DETAILS COAT (50 MILS)
- SHOULD EXTEND 6" INCHES TO EACH SIDE OF CRACK



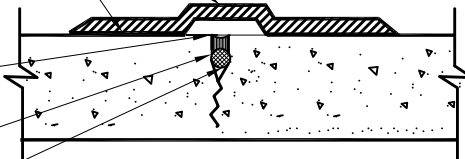
GREATER THAN 1/16 INCH

MEMBRANE (55 +/-5 MILLS)
DETAILS COAT (50 MILS)
- SHOULD EXTEND 6" INCHES TO EACH SIDE OF CRACK

BOND BREAKER (APPROX. 1-1/2 INCHES WIDE)

SEALANT (ROUT TO A MINIMUM ON 1/4 INCH WIDE BY 1/2 INCH DEEP)

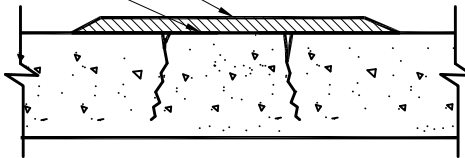
JOINT BACKING



LESS THAN 1/16 INCH

BASE COAT SYSTEM

DETAILS COAT (30 MILS)



GREATER THAN 1/16 INCH

BASE COAT SYSTEM

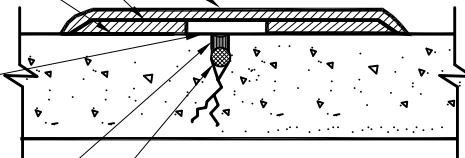
DETAIL COAT SYSTEM

BOND BREAKER (APPROX. 1-1/2" WIDE)

DETAIL COAT SYSTEM

SEALANT (ROUT TO A MINIMUM ON 1/4 INCH WIDE BY 1/2 INCH DEEP)

CLOSE CELL ETHAFOAM 258-4



A/R/C Associates Incorporated

601 NORTH FERN CREEK AVENUE SUITE 100
ORLANDO, FLORIDA 32803-4899
TEL (407)896-7875 FAX (407)898-6043

TITLE WATERPROOF DECK COATING DETAILS

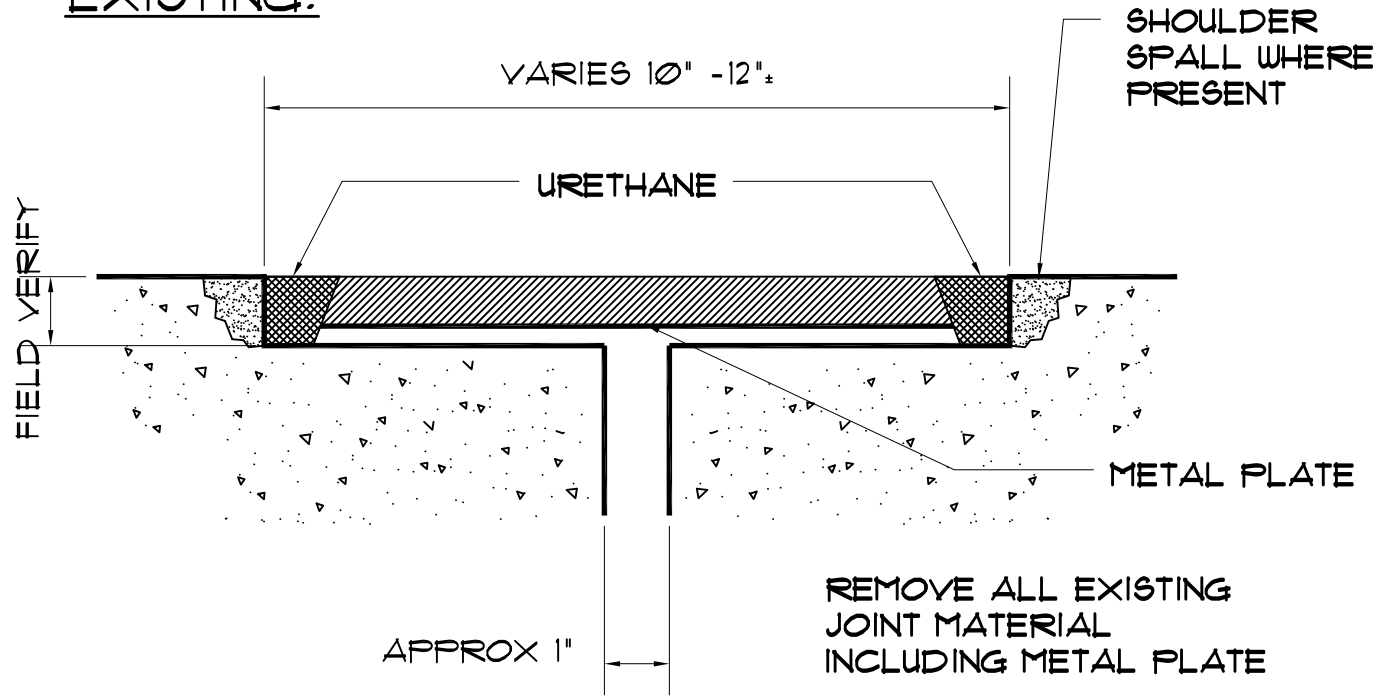
SCALE N.T.S.



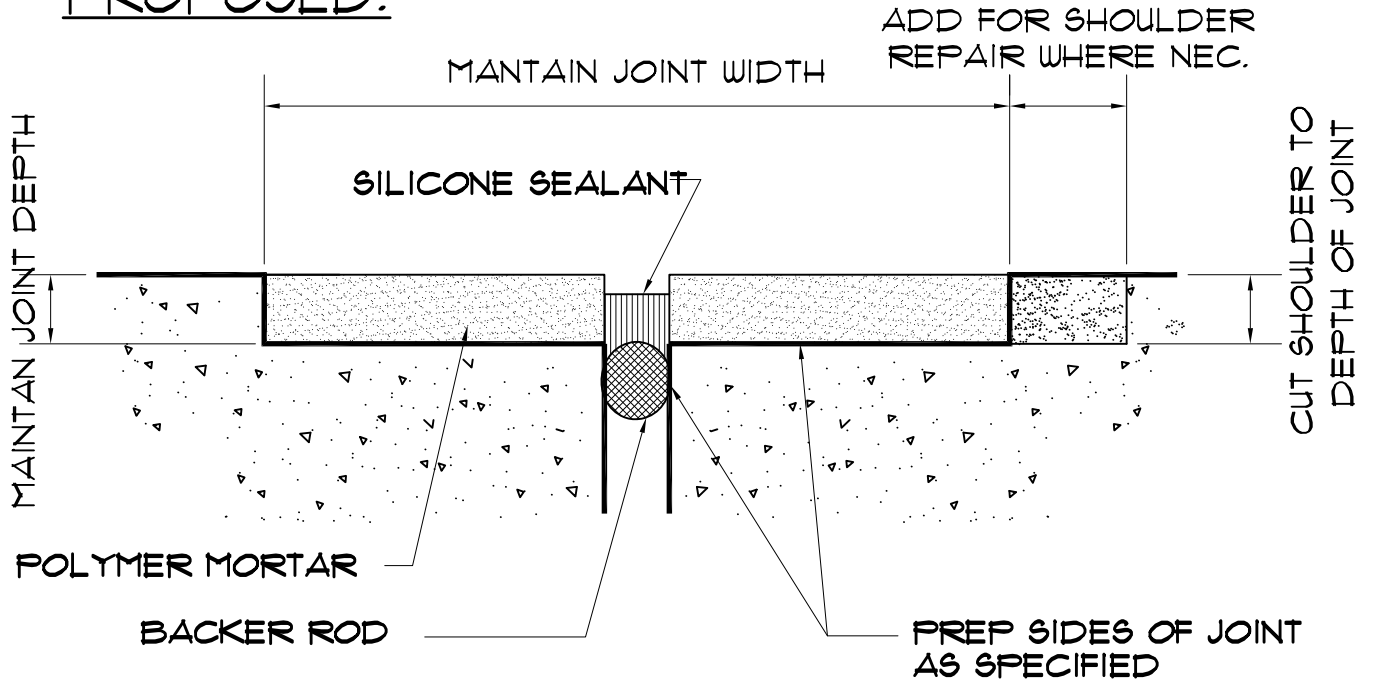
PROJECT NUMBER: 15036.01
PLOT SCALE: 3" = 1'-0"
ACAD FILE # 15036.01W101
DATE: ..
FIELD VERIFY

PARKING DECK EXPANSION JOINT REPAIR

EXISTING:



PROPOSED:



A/R/C Associates Incorporated
601 NORTH FERN CREEK AVENUE SUITE 100
ORLANDO, FLORIDA 32803-4899
TEL (407)896-7875 FAX (407)898-6043

TITLE PARKING DECK EXPANSION JOINT REPAIR

SCALE N.T.S.



ACAD FILE # 15036.01W102

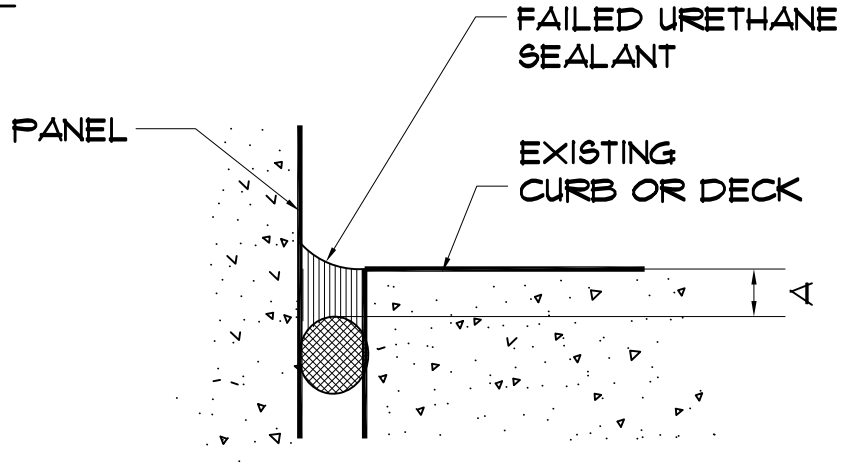
DATE: ..

PLOT SCALE : 3" = 1'-0"

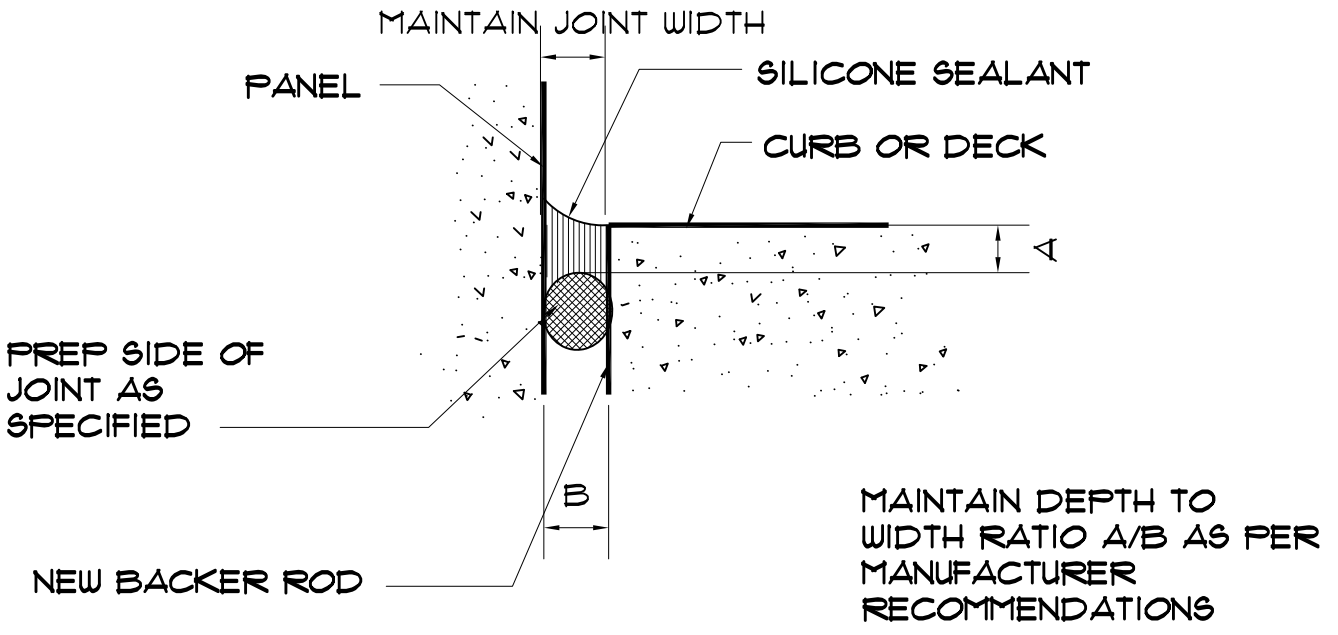
PROJECT NUMBER: 15036.01

PERIMETER EXPANSION JOINT REPAIR

EXISTING:



PROPOSED:



A/R/C Associates Incorporated
 601 NORTH FERN CREEK AVENUE SUITE 100
 ORLANDO, FLORIDA 32803-4899
 TEL (407)896-7875 FAX (407)898-6043

TITLE PERIMETER EXPANSION JOINT REPAIR

SCALE N.T.S.

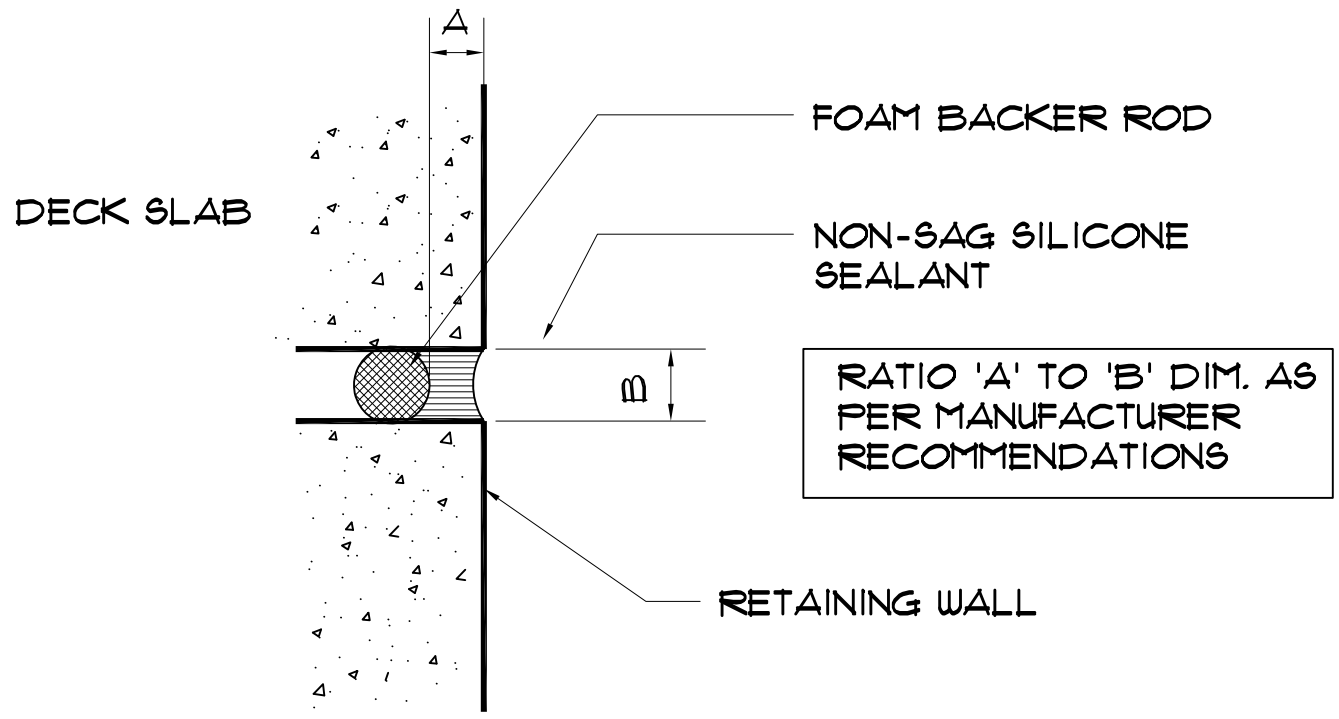


PROJECT NUMBER: 15036.01 | PLOT SCALE: 3" = 1'-0" | DATE: .. | ACAD FILE # 15036.01W103

STUCCO AND CONCRETE EXPANSION JOINT DETAILS

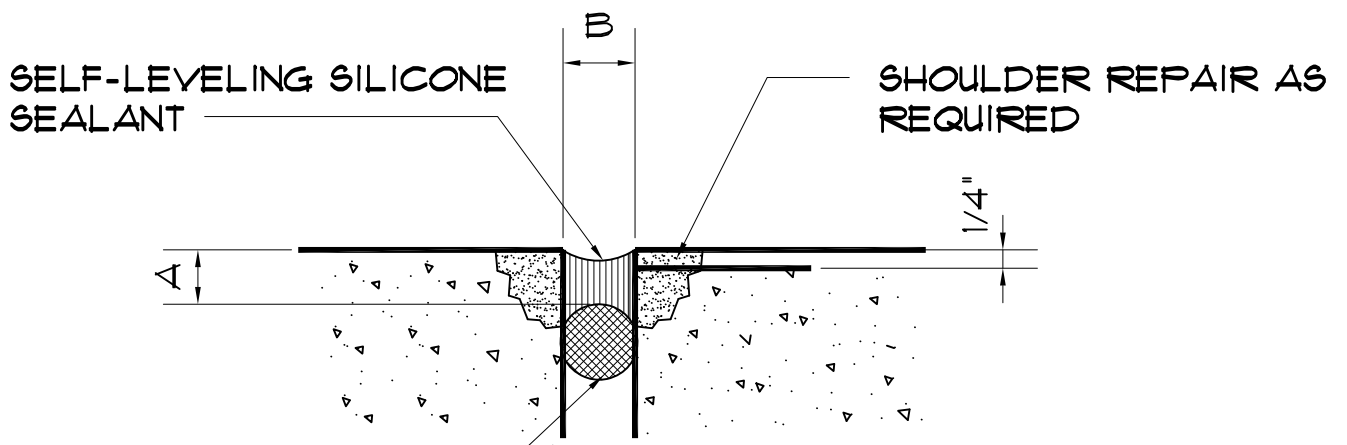
VERTICAL JOINT-WALL CONDITION

N.T.S.



HORIZONTAL JOINT-WALL CONDITION

N.T.S.



HORIZONTAL JOINT FLOOR CONDITION



A/R/C Associates Incorporated
 601 NORTH FERN CREEK AVENUE SUITE 100
 ORLANDO, FLORIDA 32803-4899
 TEL (407)896-7875 FAX (407)898-6043

TITLE STUCCO AND CONCRETE EXPANSION JOINT DETAILS

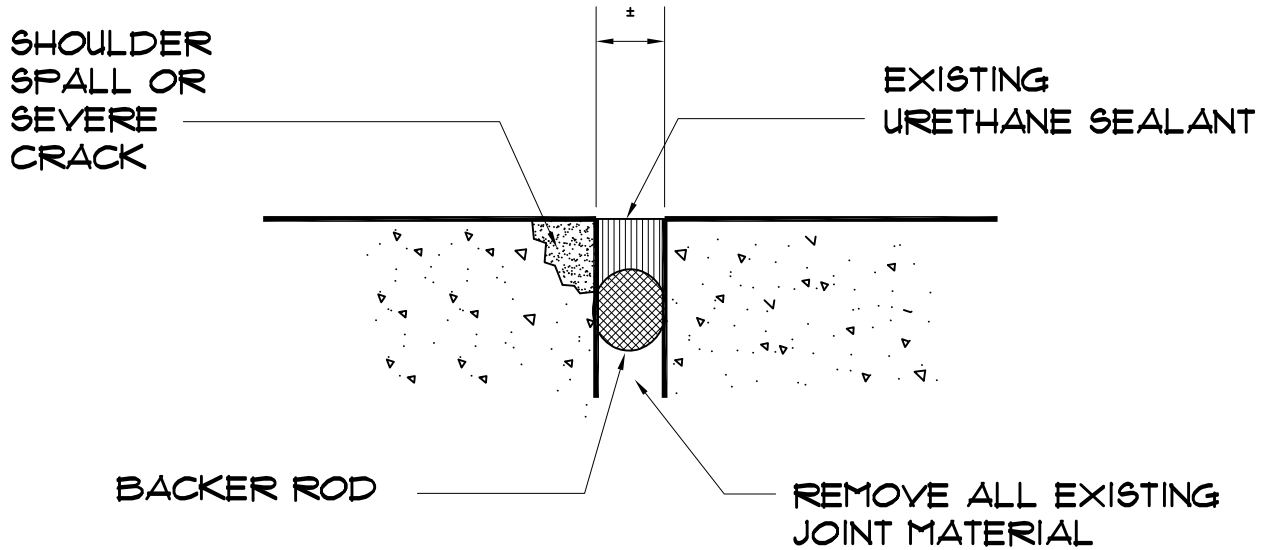
SCALE N.T.S.



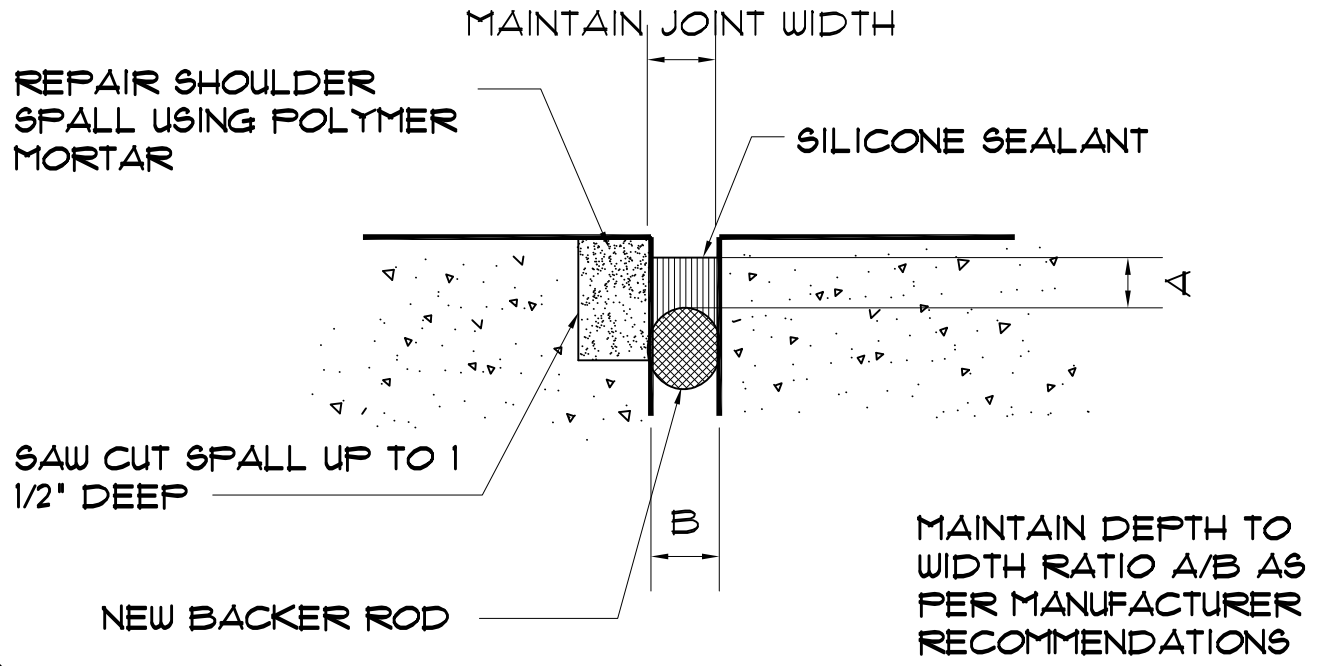
PROJECT NUMBER: 15036.01 | PLOT SCALE: FIT | DATE: .. | ACAD FILE #: 15036.01X101

PARKING DECK CONTROL JOINT REPAIR

EXISTING:



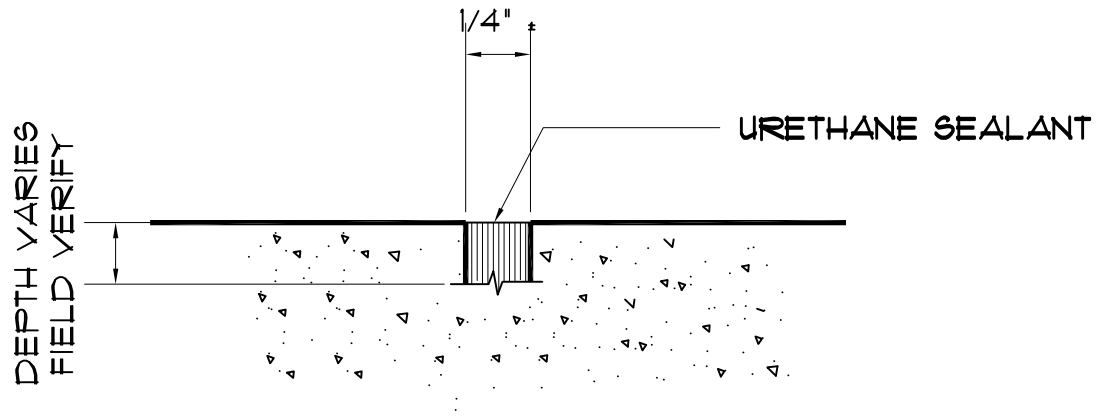
PROPOSED:



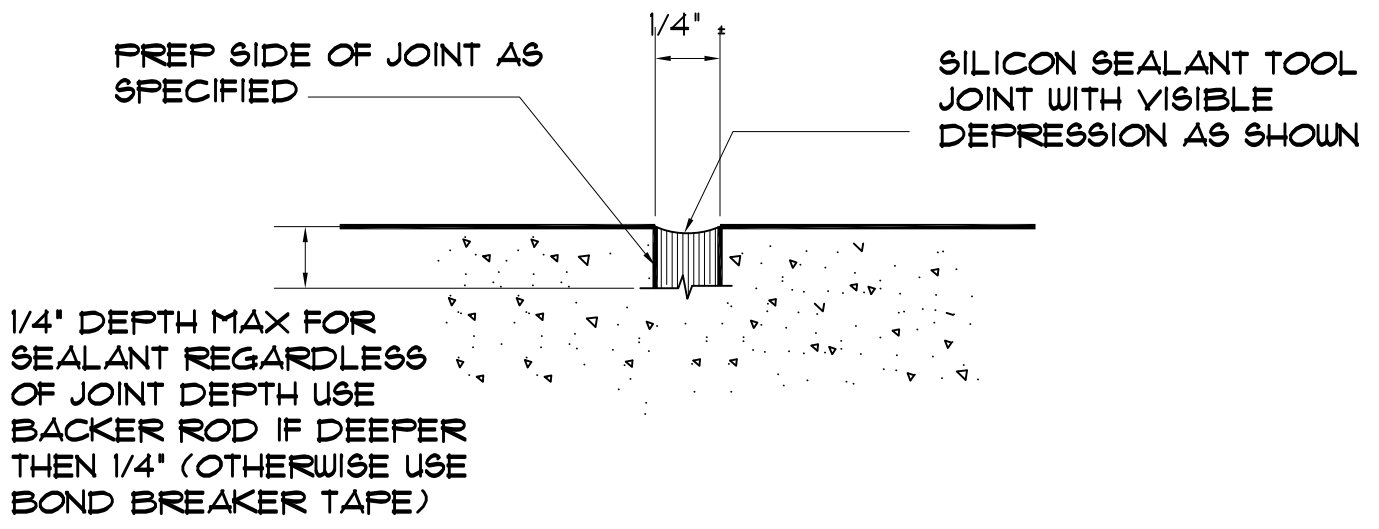
PROJECT NUMBER: 15036.01 | PLOT SCALE: 3" = 1'-0" | DATE: .. | ACAD FILE # 15036.01X102

SAW-CUT JOINT REPAIR

EXISTING:



PROPOSED:



A/R/C Associates Incorporated
 601 NORTH FERN CREEK AVENUE SUITE 100
 ORLANDO, FLORIDA 32803-4899
 TEL (407)896-7875 FAX (407)898-6043

TITLE SAW CUT JOINT REPAIR

SCALE N.T.S.



ACAD FILE # 15036.0|X|03

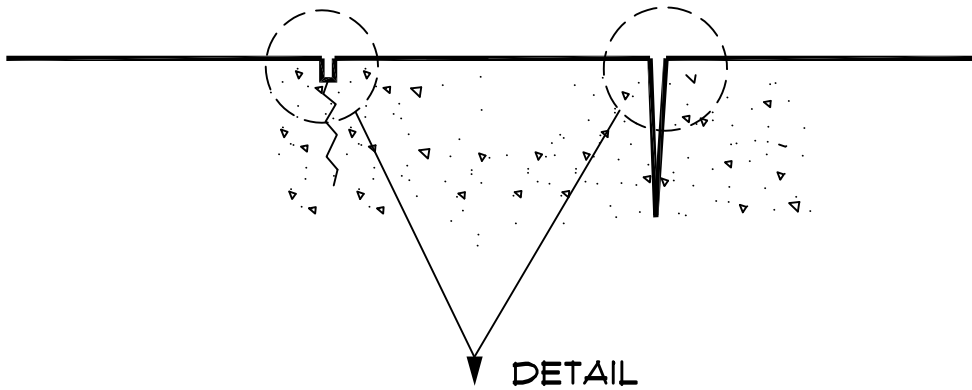
DATE: ..

PLOT SCALE : 3" = 1'-0"

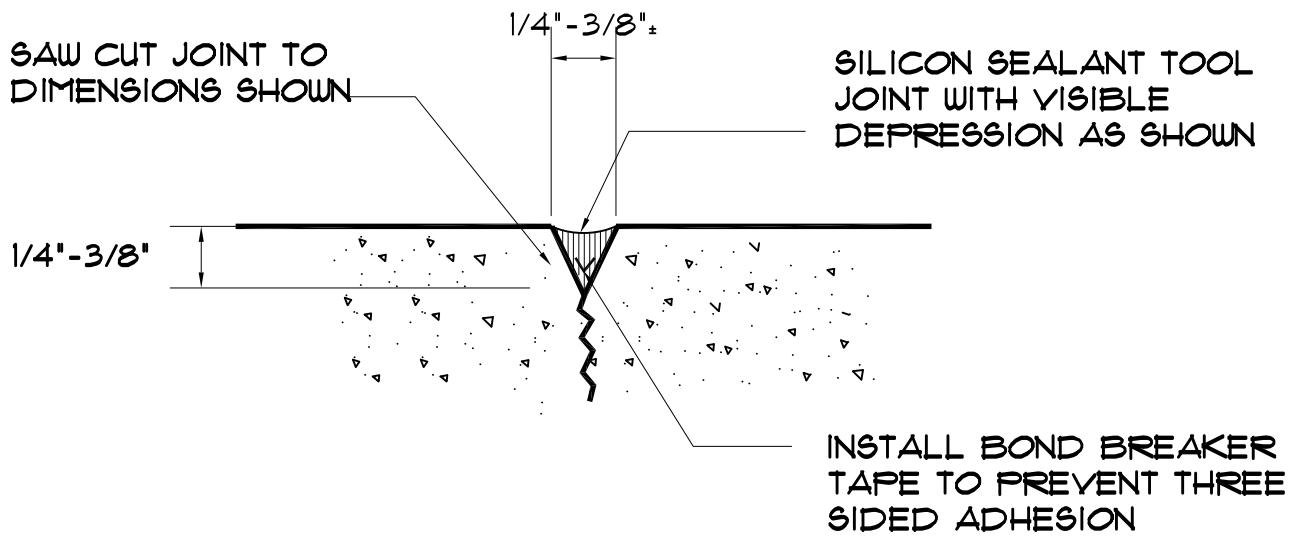
PROJECT NUMBER: 15036.0|

CRACK AND CONSTRUCTION JOINT REPAIR

EXISTING:



PROPOSED:



A/R/C Associates Incorporated
 601 NORTH FERN CREEK AVENUE SUITE 100
 ORLANDO, FLORIDA 32803-4899
 TEL (407)896-7875 FAX (407)898-6043

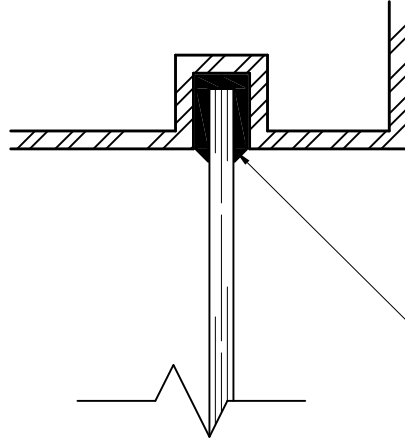
TITLE CRACK AND CONSTRUCTION JOINT REPAIR

SCALE N.T.S.



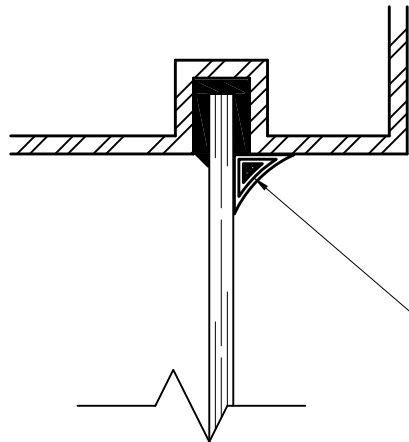
PERIMETER SEALANT DETAILS

EXISTING:



CUT BACK THE
NEOPRENE RUBBER
GASKET FLUSH WITH
THE FRAME (SEE
BELOW)

PROPOSED:



INSTALL SILICONE
SEALANT AS SHOWN

NOTE: JAMB AND SILL CONDITION
SIMILAR

PROJECT NUMBER: 15036.0 | PLOT SCALE: 3" = 1'-0" | DATE: .. | ACAD FILE # 15036.0 | X104



A/R/C Associates Incorporated

601 NORTH FERN CREEK AVENUE SUITE 100
ORLANDO, FLORIDA 32803-4899
TEL (407)896-7875 FAX (407)898-6043

TITLE PERIMETER SEALANT
DETAILS

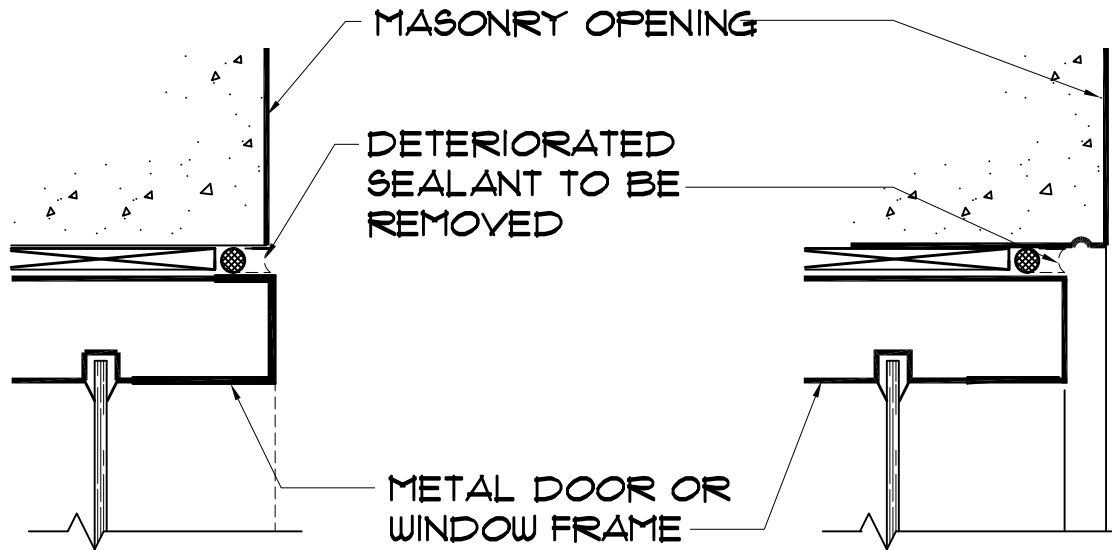
SCALE N.T.S.



PERIMETER SEALANT DETAILS (FOR MOST MASONRY OPENINGS)

INCLUDES CONCRETE,
STUCCO, BRICK, ETC.

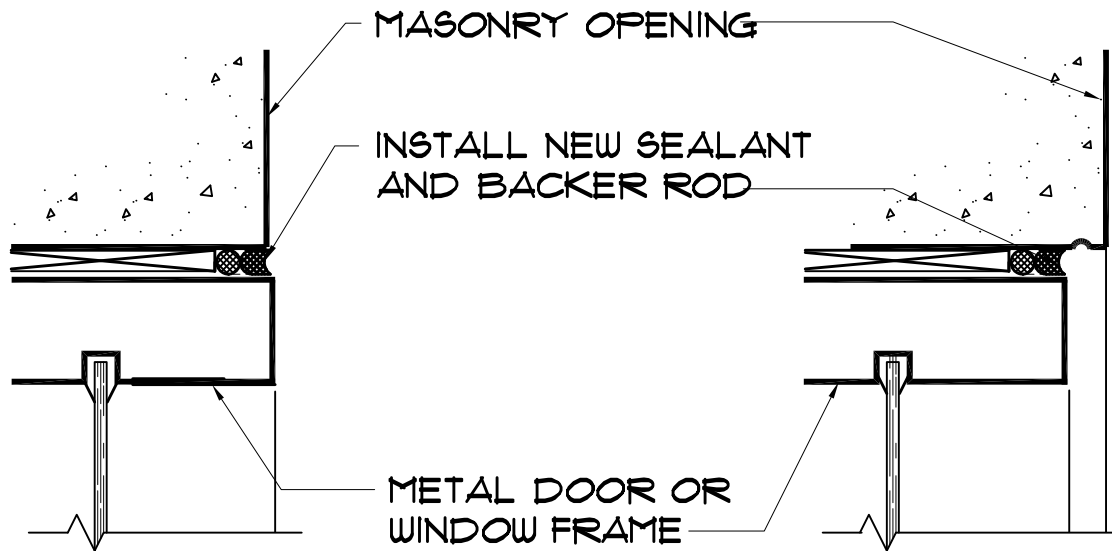
EXISTING:



FLUSH WINDOW
CONDITION

SET-BACK WINDOW
CONDITION

PROPOSED:



NOTE: JAMB AND SILL CONDITION
SIMILAR

ACAD FILE # 15036.01X105

DATE: ..

PLOT SCALE : 3" = 1'-0"

PROJECT NUMBER: 15036.01



A/R/C Associates Incorporated
601 NORTH FERN CREEK AVENUE SUITE 100
ORLANDO, FLORIDA 32803-4899
TEL (407)896-7875 FAX (407)898-6043

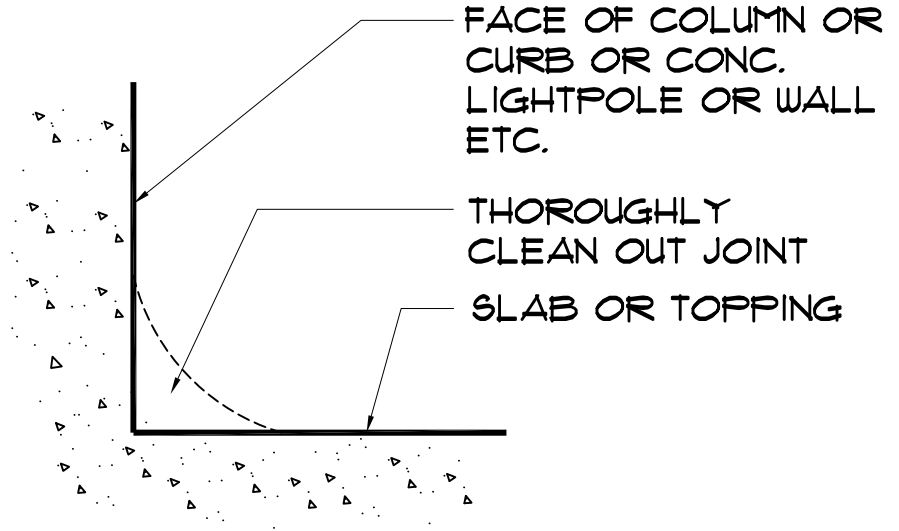
TITLE PERIMETER SEALANT
DETAILS

SCALE N.T.S.

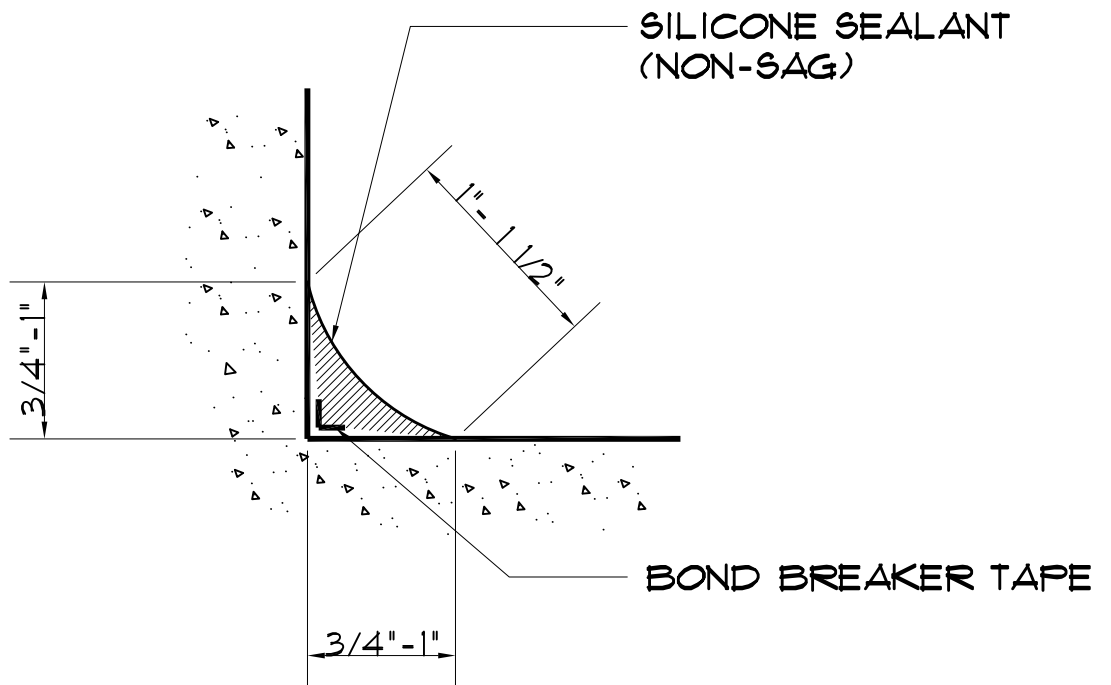


COVE SEALANT REPLACEMENT

EXISTING:



PROPOSED:



ACAD FILE # 15036.01X106

DATE: ..

PLOT SCALE : 3" = 1'-0"

PROJECT NUMBER: 15036.01



A/R/C Associates Incorporated
601 NORTH FERN CREEK AVENUE SUITE 100
ORLANDO, FLORIDA 32803-4899
TEL (407)896-7875 FAX (407)898-6043

TITLE COVE SEALANT
REPLACEMENT

SCALE N.T.S.

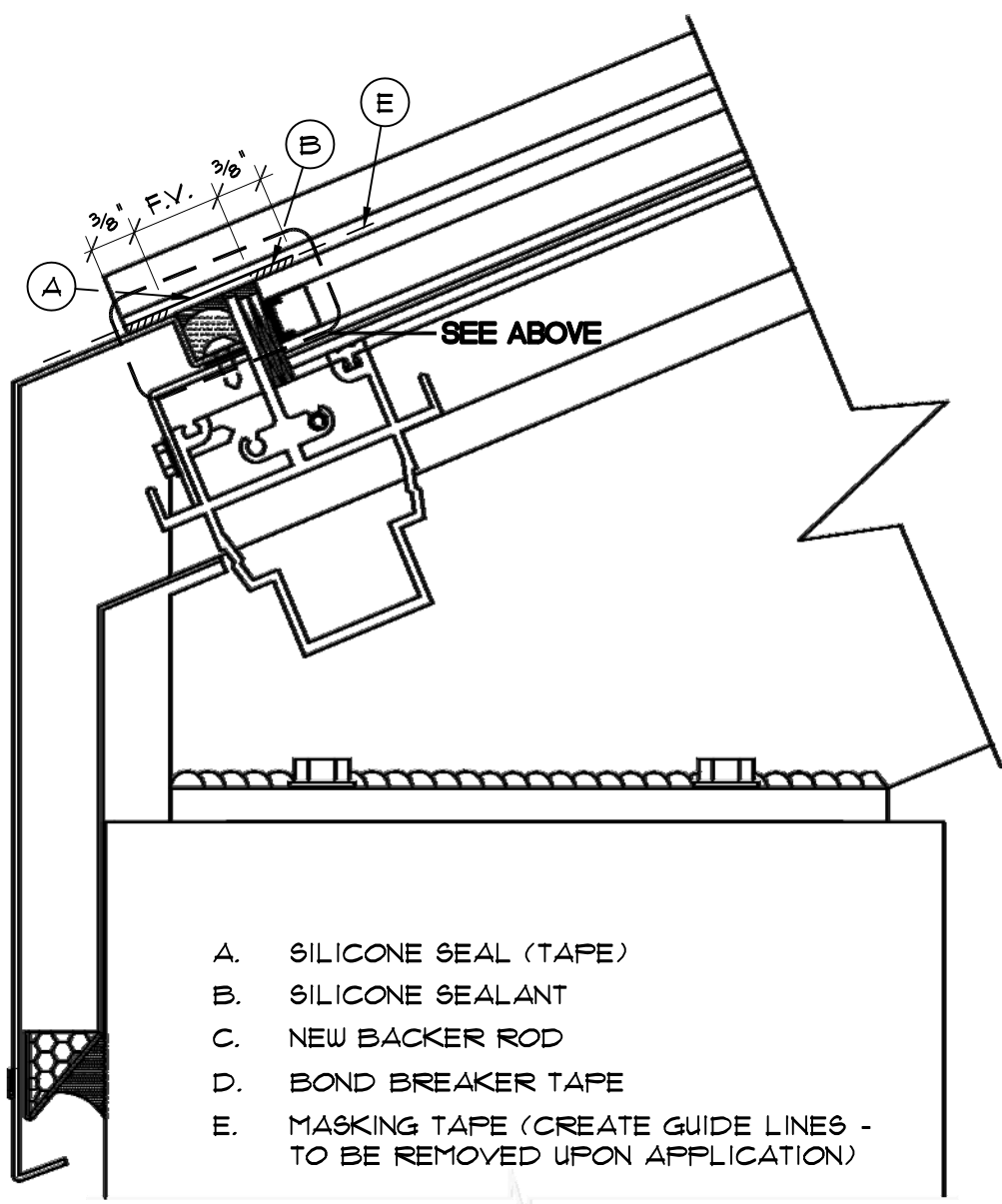
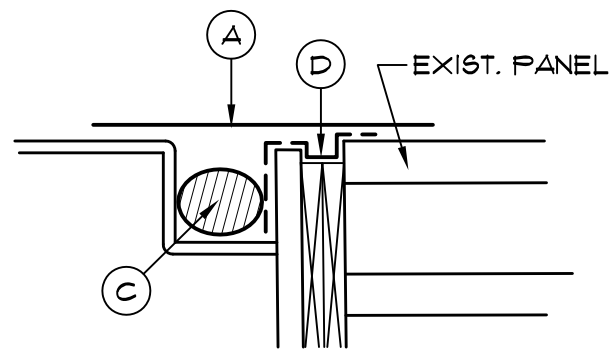


ACAD FILE # 15036.01-101

DATE: . . .

PLOT SCALE : 3" = 1'-0"

PROJECT NUMBER: 15036.01



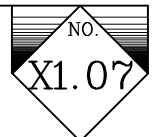
- A. SILICONE SEAL (TAPE)
- B. SILICONE SEALANT
- C. NEW BACKER ROD
- D. BOND BREAKER TAPE
- E. MASKING TAPE (CREATE GUIDE LINES - TO BE REMOVED UPON APPLICATION)



A/R/C Associates Incorporated
 601 NORTH FERN CREEK AVENUE SUITE 100
 ORLANDO, FLORIDA 32803-4899
 TEL (407)896-7875 FAX (407)898-6043

TITLE TYPICAL EDGE DETAIL
 W/ HORIZONTAL JOINT

SCALE N.T.S.

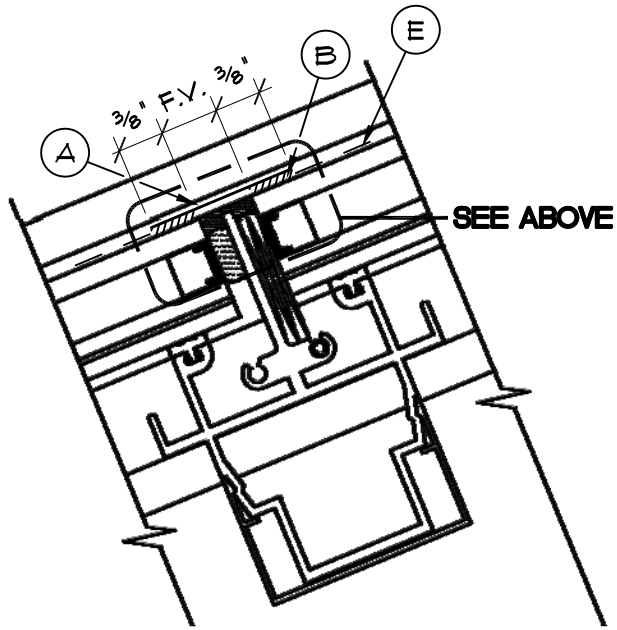
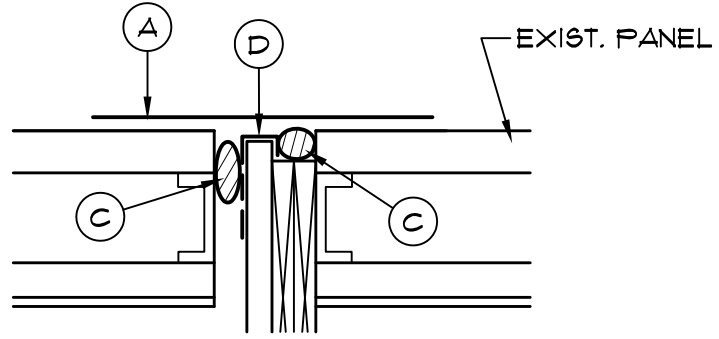


ACAD FILE # 15036.0|X108

DATE: . . .

PLOT SCALE : 3" = 1'-0"

PROJECT NUMBER: 15036.0|



- A. SILICONE SEAL (TAPE)
- B. SILICONE SEALANT
- C. NEW BACKER ROD
- D. BOND BREAKER TAPE
- E. MASKING TAPE (CREATE GUIDE LINES - TO BE REMOVED UPON APPLICATION)



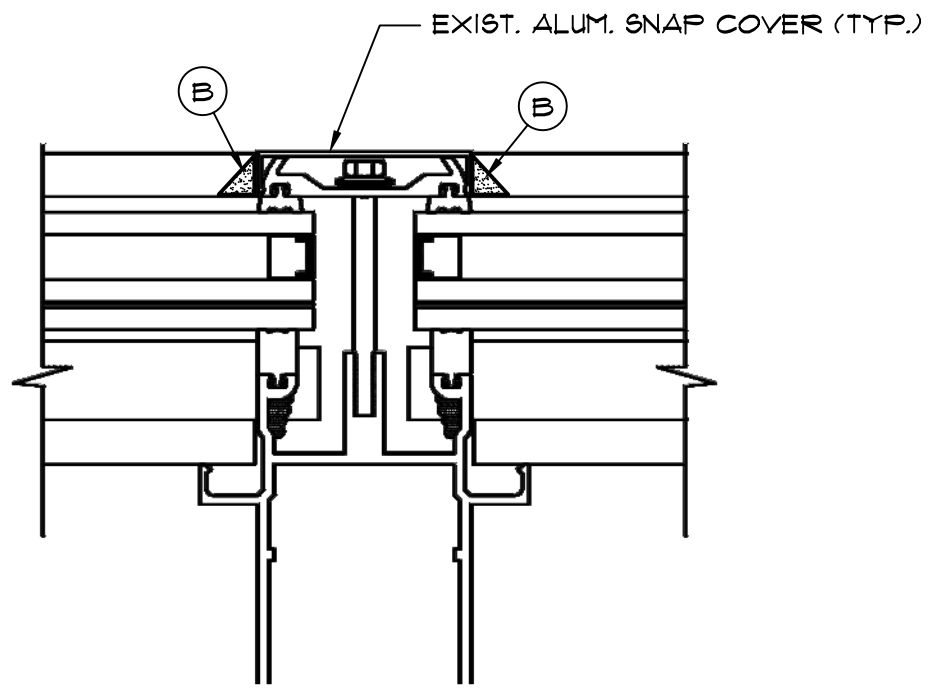
A/R/C Associates Incorporated

601 NORTH FERN CREEK AVENUE SUITE 100
 ORLANDO, FLORIDA 32803-4899
 TEL (407)896-7875 FAX (407)898-6043

TITLE TYP. HORIZONTAL JOINT

SCALE 1/2" = 1'-0"





- A. SILICONE SEAL (TAPE)
- B. SILICONE SEALANT
- C. NEW BACKER ROD
- D. BOND BREAKER TAPE
- E. MASKING TAPE (CREATE GUIDE LINES - TO BE REMOVED UPON APPLICATION)

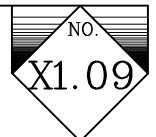


A/R/C Associates Incorporated

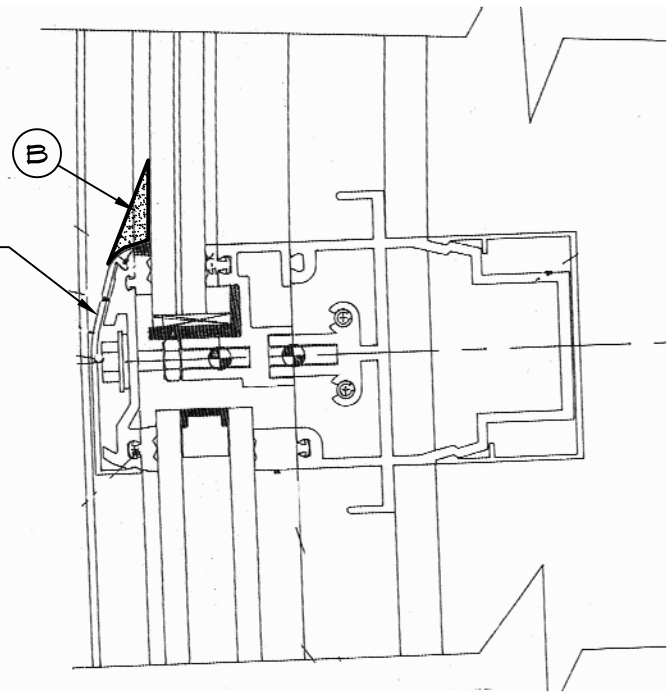
601 NORTH FERN CREEK AVENUE SUITE 100
 ORLANDO, FLORIDA 32803-4899
 TEL (407)896-7875 FAX (407)898-6043

TITLE TYPICAL SNAP COVERS

SCALE 1/2" = 1'-0"



EXIST. ALUM. SNAP COVER (TYP.)



- A. SILICONE SEAL (TAPE)
- B. SILICONE SEALANT
- C. NEW BACKER ROD
- D. BOND BREAKER TAPE
- E. MASKING TAPE (CREATE GUIDE LINES - TO BE REMOVED UPON APPLICATION)



A/R/C Associates Incorporated

601 NORTH FERN CREEK AVENUE SUITE 100
ORLANDO, FLORIDA 32803-4899
TEL (407)896-7875 FAX (407)898-6043

TITLE TYPICAL HORIZONTAL SNAP COVER DETAIL

SCALE N.T.S.

NO. **X1.10**