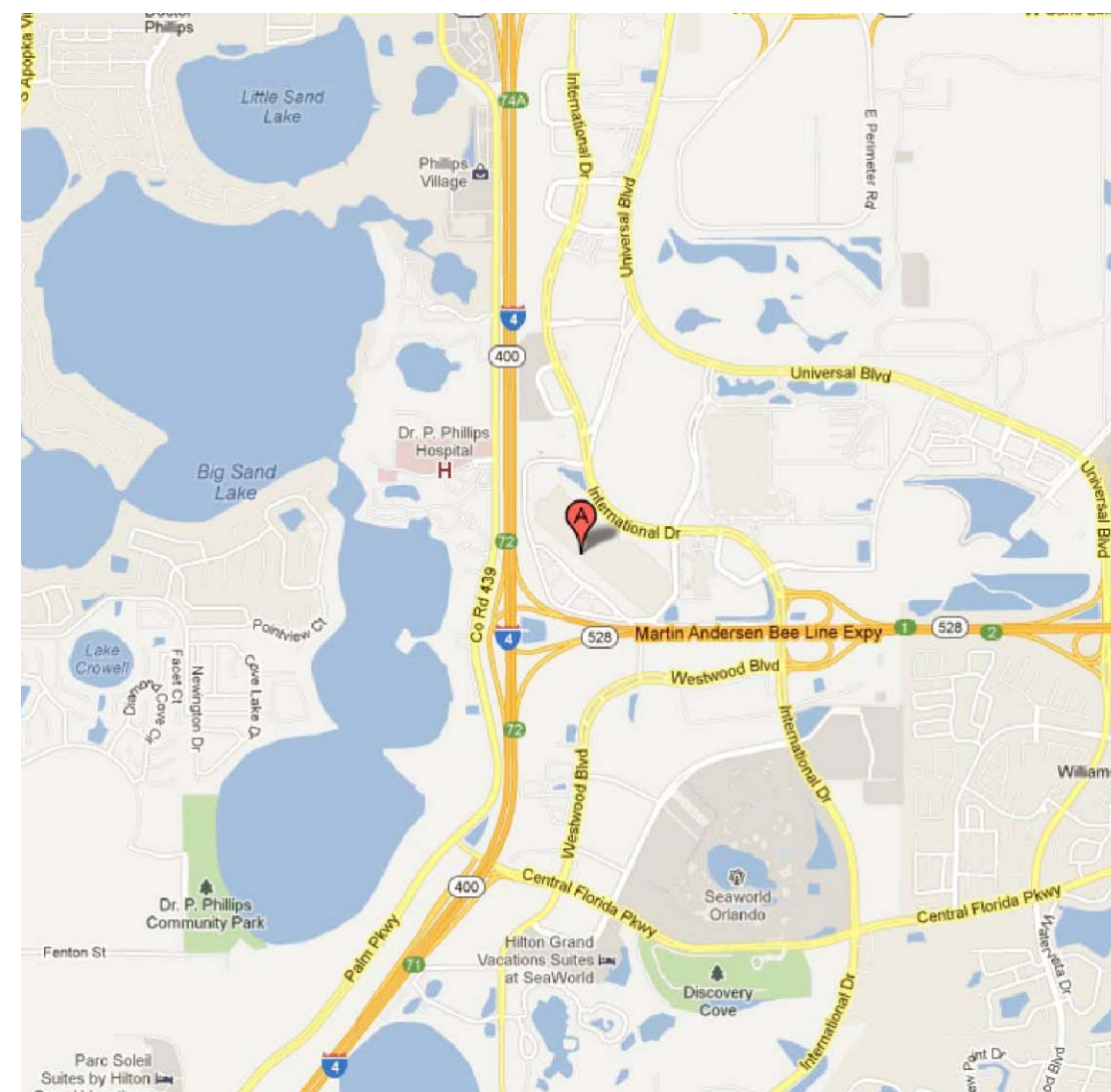


DESIGNATED REPAIRS OF THE VISIT ORLANDO SALES OFFICES WALLS AND WINDOWS

ORANGE COUNTY CONVENTION CENTER
ORLANDO, FL 32819



 **SITE VICINITY MAP**

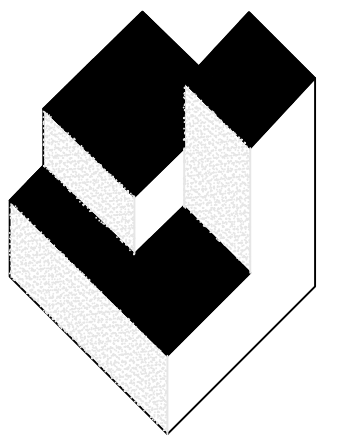


BOARD OF COUNTY COMMISSIONERS

Teresa Jacobs	Orange County Mayor
S. Scott Boyd	District 1
Bryan Nelson	District 2
Pete Clarke	District 3
Jennifer Thompson	District 4
Ted B. Edwards	District 5
Victoria Siplin	District 6

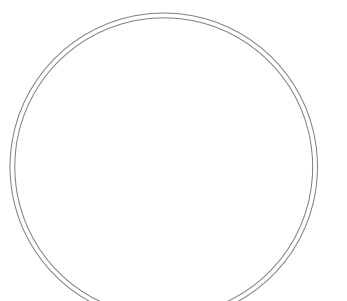
DRAWING INDEX

SHEET NUMBER	SHEET TITLE
CS	COVER SHEET, SITE VICINITY MAP AND DRAWING INDEX
A-1	OVERALL ELEVATION PLAN, LEGENDS, GENERAL NOTES AND CODE DATA



**A/R/C
Associates
Incorporated**

Architecture
Roof Consulting
Construction Technology
L.C. NBR AAC000932
801 North Fern Creek Avenue
Suite 100 Orlando, FL
32805-4899
Tel. (407) 898-7875
Fax. (407) 898-6043
COPYRIGHT © 2013 A/R/C ASSOCIATES, INC.



RICHARD N. AWSOMB AR-0007178
 JAMES W. RIPLEY AR-0012768
 JOSEPH J. WILLIAMS AR-0007684

REVISIONS		
NO.	DATE	BY:

Designated Repairs of:
Orlando Sales Office Walls + Windows
Orange County Convention Center
Orlando, FL 32819

JOB NO.: 14059.00
DRAWN BY: TAH
CHECKED BY: JJW
DATE: 11/20/14
SCALE: AS NOTED
PLOT SCALE: 1=1

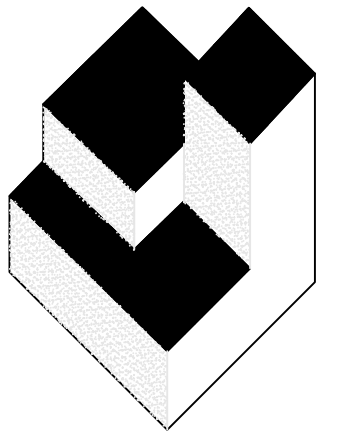
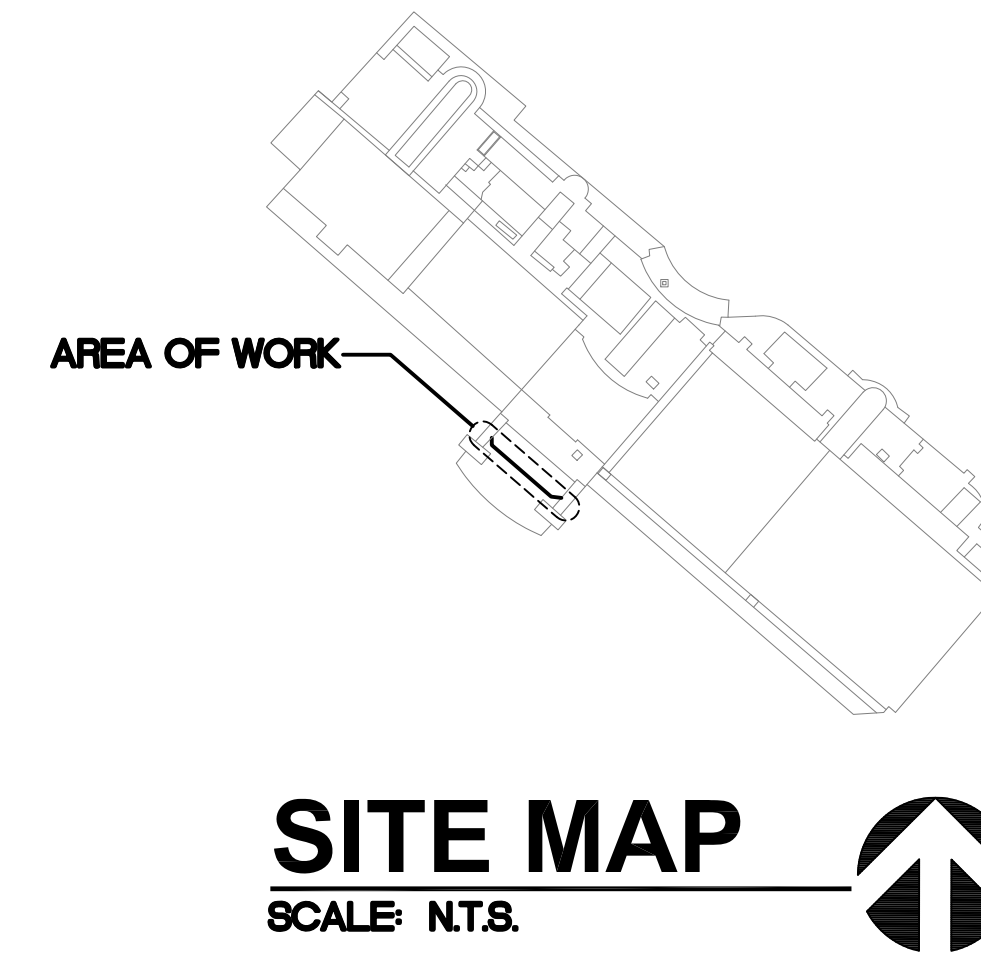
CS

SHEET NO.:
1 OF 2 SHEET(S)

COVER SHEET, SITE VICINITY MAP AND DRAWING INDEX

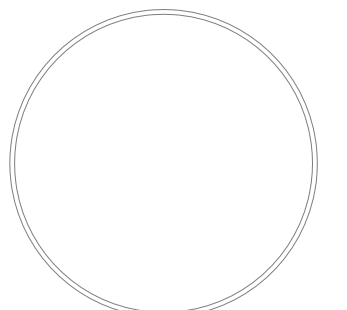
GENERAL ROOFING NOTES

1. THE DIMENSIONS SHOWN ON THE ELEVATION PLANS OF THIS PROJECT WERE TAKEN FROM THE OWNER'S ARCHITECTURAL DOCUMENTS OR ARE THE RESULT OF FIELD MEASUREMENTS TAKEN BY A/R/C ASSOCIATES. THIS INFORMATION IS GIVEN TO ASSIST PROSPECTIVE BIDDERS ESTABLISHING THE APPROXIMATE SCOPE OF THE PROJECT. AS A PRE-REQUISITE FOR BIDDING THE PROJECT, HOWEVER, ALL DIMENSIONS SHALL BE FIELD VERIFIED BY EACH BIDDER SO THAT THE DIMENSIONS UTILIZED IN BIDDING THE PROJECT WILL BE THOSE DIMENSIONS TAKEN, CONFIRMED OR CORRECTED BY THE BIDDER. CONTRACTOR SHALL VERIFY ALL DIMENSIONS, DETAILS, AND EQUIPMENT NOTED AND SHALL NOTIFY THE ARCHITECT OF ANY DISCREPANCIES PRIOR TO PROCEEDING WITH THE WORK.
2. THE ELEVATION PLAN IS GENERAL IN NATURE AND INDICATES APPROXIMATE EXISTING CONDITIONS AT THE PROJECT SITE. THE CONTRACTOR SHALL BE RESPONSIBLE FOR A VISUAL FIELD SURVEY (PRIOR TO BID) IN REGARD TO QUANTITIES, AND VERIFICATION OF GENERAL CONFORMANCE WITH THE FLORIDA BUILDING CODE.
3. PRIOR TO THE START OF ANY WORK, THE CONTRACTOR WITH THE PROJECT ARCHITECT AND OWNER'S REPRESENTATIVE SHALL VISIT THE SITE AND VIDEO TAPE THE ROOF AND ALL SPACES UNDERNEATH THAT MAY BE AFFECTED BY THIS PROJECT IN ORDER TO DETERMINE THE CONTRACTOR'S RESPONSIBILITY IN KEEPING THOSE ITEMS IN THEIR CURRENT STATUS. SPECIAL ATTENTION SHALL BE GIVEN TO CEILING TILES, EXISTING LIGHT FIXTURES, EXTERIOR AND INTERIOR WALL FINISHES, AND SIDEWALKS, ETC. PARTICULARLY IN THOSE AREAS WHERE EXISTING LEAKS ARE PRESENT AND SPECIAL CONDITIONS.
4. IN THE EVENT OF WATER DAMAGE TO THE INTERIOR OF STRUCTURES, A DAMAGE REPORT, WITH PHOTOGRAPHS SHALL BE COMPLETED BY THE PROJECT ARCHITECT. THE REPORT SHALL BE SUBMITTED TO THE OWNER AND THE CONTRACTOR FOR THEIR RECORDS.
5. CONTRACTOR SHALL BE RESPONSIBLE TO REMOVE, REINSTALL, OR REPLACE ALL CEILING PANELS AND/OR CEILING GRIDS WHICH MAY HAVE BEEN DISTURBED OR DAMAGED IN THE CONSTRUCTION PROCESS.
6. NOTIFY THE LOCAL POLICE OFFICIALS, THE OWNER OR ARCHITECT BY TELEPHONE IN EACH INSTANCE OF PROPERTY DAMAGE RESULTING FROM FIRE, WATER DAMAGE, ILLEGAL ENTRY, VANDALISM, THEFT OR BURGLARY, OR VEHICLE DAMAGE WITHIN 24 HOURS OF DISCOVERING THE INCIDENT.
7. DETAILS REFERENCED ON THE CONTRACT DRAWINGS ARE 'TYPICAL' AND ARE NOT CUT AT EVERY LOCATION WHERE THE CONDITION OCCURS. BID AND EXECUTE A COMPLETE PROJECT AS IF DETAILS WERE 'CUT' AT EVERY LOCATION WHERE SUCH CONDITION OR SIMILAR CONDITION OCCURS.
8. SHEET METAL DETAILS AND TRANSITIONS NOT SHOWN SHALL BE REQUIRED AS IF SHOWN. PREPARE, AND SUBMIT SHOP DRAWINGS OF THESE REQUIREMENTS TO THE ARCHITECT FOR APPROVAL PRIOR TO SHOP FABRICATION.
9. CONTRACTOR SHALL PROVIDE ALL SUPPLEMENTAL MATERIALS REQUIRED TO PROPERLY INSTALL, SUPPORT AND BRACE ALL ITEMS AND COMPONENTS WITHIN THE WORK.
10. CONTRACTOR SHALL BE RESPONSIBLE FOR REPAIR AND PAINTING / FINISHING OF ALL SURFACES EXPOSED OR DAMAGED AS A RESULT OF THE SCOPE OF WORK. WORK NOT COVERED BY NEWLY INSTALLED WORK. REPAIRS AND FINISHES SHALL MATCH EXISTING ADJACENT CONDITIONS TO REMAIN UNCHANGED.



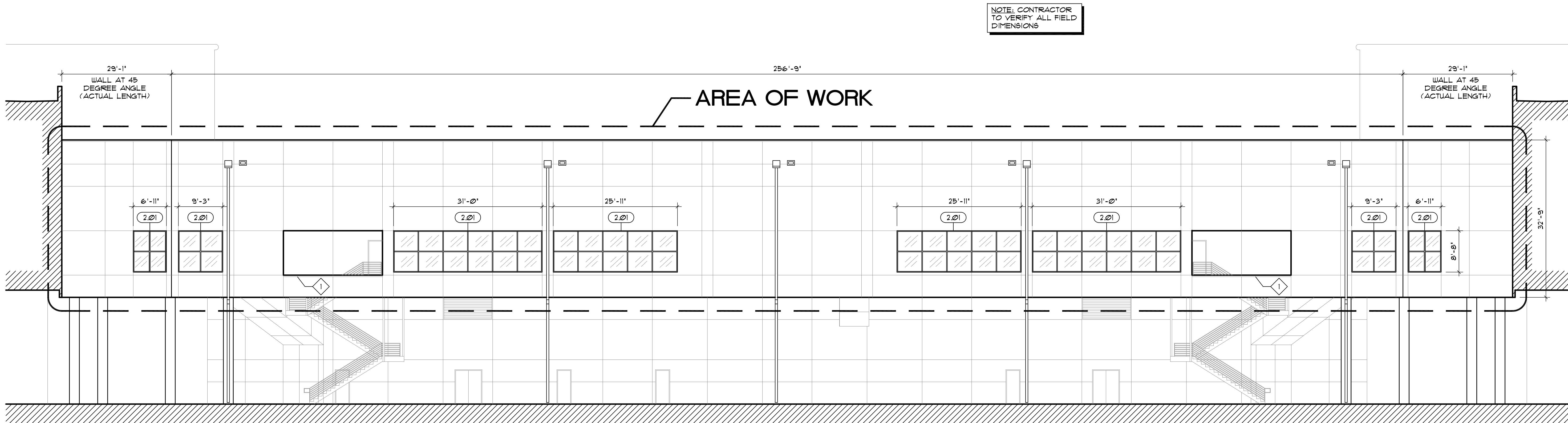
A/R/C
Associates
Incorporated

Architecture
Roof Consulting
Construction Technology
L.L.C. NBR AAC000932
801 North Fern Creek Avenue
Suite 100 Orlando, FL
32803-4899
Tel. (407) 896-7875
Fax. (407) 896-6043
COPYRIGHT © 2013 A/R/C ASSOCIATES, INC.



RICHARD N. AWSUMB AR-0007178
JAMES W. RIPLEY AR-0012708
JOSEPH J. WILLIAMS AR-0007684

REVISIONS		
NO.	DATE	BY:



ELEVATION PLAN
SCALE: 3/32" = 1'-0"

SPECIFIC NOTES

- ◇ REMOVE AND REAPPLY SEALANT WHERE COPING TERMINATES AND RESEAL COPING SPLICE JOINT.

OVERALL ELEVATION PLAN, LEGENDS, GENERAL NOTES AND CODE DATA

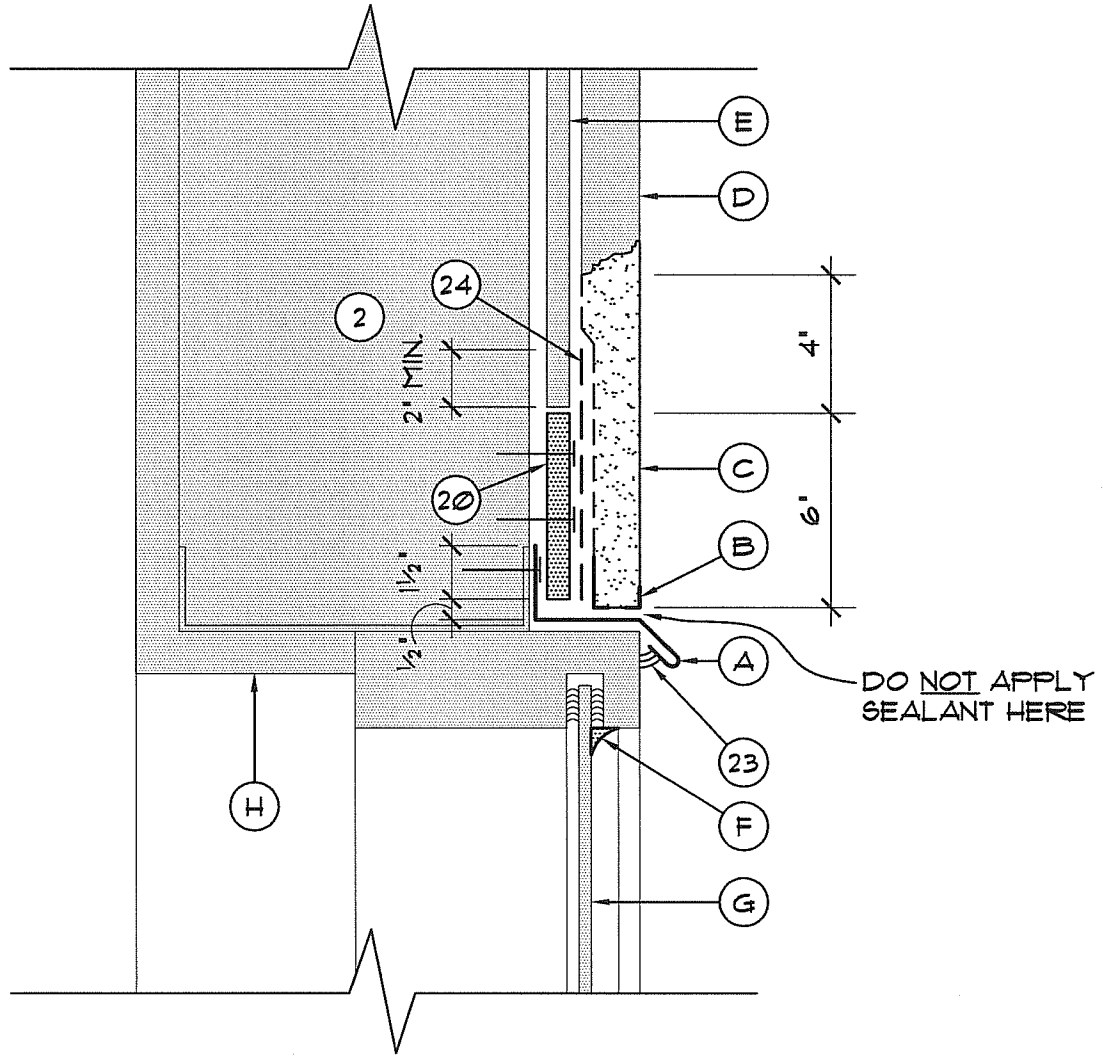
Designated Repairs of:

Orlando Sales Office Walls + Windows
Orange County Convention Center
Orlando, FL 32819

JOB NO.: 14059.00
DRAWN BY: TAH
CHECKED BY: JJW
DATE: 11/20/14
SCALE: AS NOTED
PLOT SCALE: 1=1

A-1

SHEET NO.:
2 OF 2 SHEET(S)



- | | |
|--|---|
| <p>2. EXIST. METAL STUD FRAMING SPACED @ 16" O.C.</p> <p>20. NEW GYPSUM SHEATHING - SCREW FASTEN TO THE METAL FRAMING WITH 2 FASTENERS PER STUD - DO NOT PENETRATE NEW HEADWALL FLASHING</p> <p>23. SEALANT - APPLY SEALANT UNDER LIP OF HEADWALL FLASHING AND ALONG THE JAMBS AND BASE OF THE WINDOWS WHERE THE EXIST. STUCCO ENGAGES THE WINDOW FRAME</p> <p>24. FLASHING TAPE TO JOIN NEW AND EXIST. SHEATHING WITH 2" LAP MIN. PER SIDE</p> <p>A. NEW 24 GA. ST. STL. HEADWALL FLASHING - SEE DETAIL (2.02)</p> <p>B. PVC STUCCO 'J' BEAD W/ WEEP HOLES PROVIDED AT 4" O.C. (MIN.)</p> | <p>C. CUT EXIST. STUCCO SYS. AS REQ'D TO INSTALL NEW FLASHING - INSTALL NEW 1/8" STUCCO SYS. & PATCH AND TEXTURE TO MATCH EXIST.</p> <p>D. EXIST. STUCCO TO REMAIN</p> <p>E. EXIST. GYPSUM SHEATHING TO REMAIN</p> <p>F. CUT BACK EXISTING SEALANT AND WET GLAZE AROUND THE GLASS WINDOWS TO THE FRAME TO ENSURE A WATERTIGHT CONDITION</p> <p>G. EXIST. WINDOW TO REMAIN</p> <p>H. INTERIOR DRYWALL FINISHES TO REMAIN</p> |
|--|---|

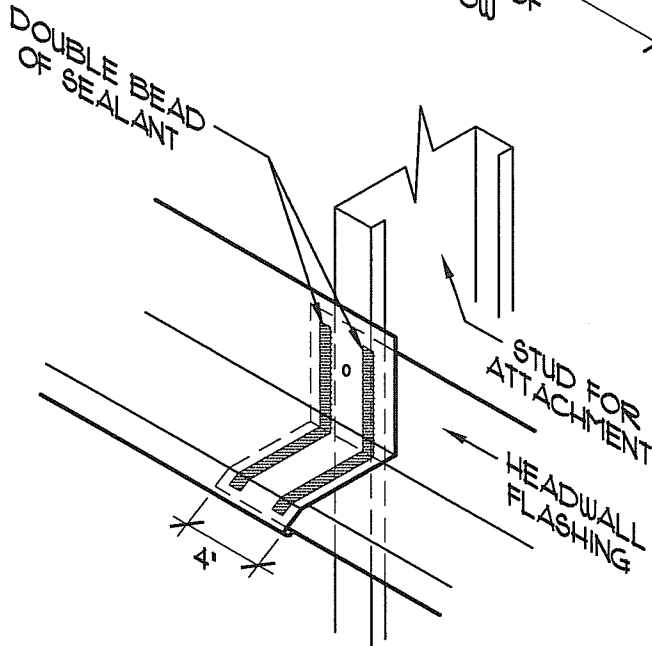
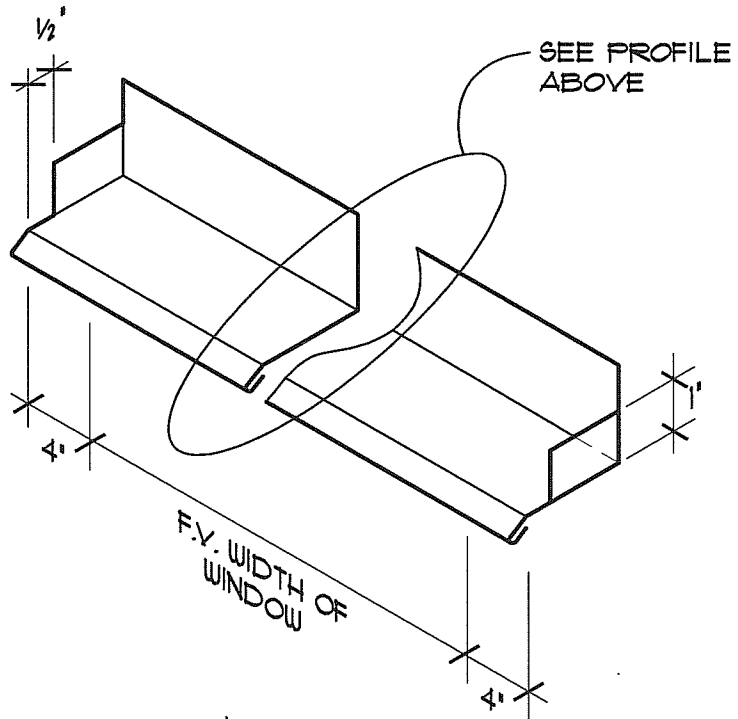
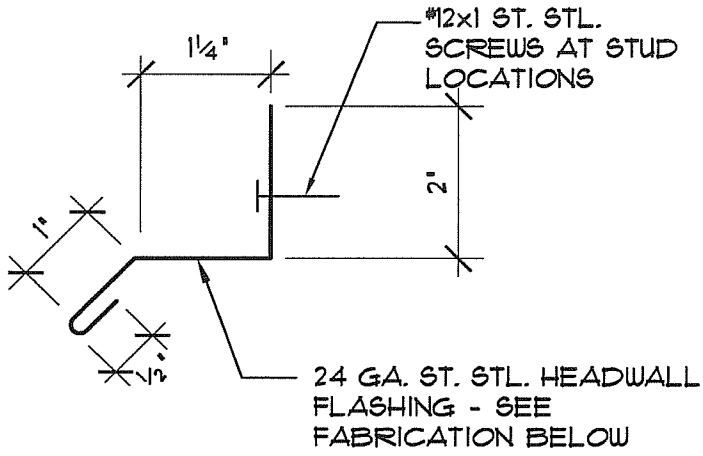


ACAD FILE # 1405900-202

DATE: ..

PLOT SCALE : 3" = 1'-0"

PROJECT NUMBER: 1405900



A/R/C Associates Incorporated
 601 NORTH FERN CREEK AVENUE SUITE 100
 ORLANDO, FLORIDA 32803-4899
 TEL (407)896-7875 FAX (407)898-6043

TITLE TYP. HEADWALL FABRICATION OVER WINDOWS

SCALE N.T.S.



ACAD FILE # 14059.00-801

DATE:

PLOT SCALE: 3"=1'

PROJECT NUMBER: 14059.00

FASTENER SCHEDULE

A. GENERAL NOTES:

1. THIS SCHEDULE AND THE FASTENING METHODS INDICATED HEREIN ARE INTENDED TO ADDRESS TYPICAL CONDITIONS, AND MAY NOT APPLY TO ALL CONDITIONS FOR THIS PROJECT.
2. CONTRACTOR/INSTALLER MUST ALSO REFER TO THE DETAILS FOR THIS SPECIFIC PROJECT. IN THE CASE OF CONFLICTING DATA, THE PROJECT SPECIFIC DETAILS SHALL GOVERN.
3. FOR ALL CONDITIONS NOT COVERED WITHIN SCHEDULE, REFER TO FASTENER REQUIREMENTS OF THE WRITTEN SPECIFICATIONS ABOVE OR CONSULT WITH OWNER OR ARCHITECT.
4. MANUFACTURER OF ALL SPECIALITY FASTENER SHALL PERFORM FIELD TESTING TO VERIFY WITHDRAWAL VALUES AND FASTENING PATTERNS FOR THE SPECIFIC PROJECT CONDITIONS PRIOR TO INSTALLATION. A WRITTEN REPORT SHALL BE SUBMITTED TO THE OWNER AND ARCHITECT FOR REVIEW AND APPROVAL.
5. ALL FASTENERS SHALL BE STAINLESS STEEL OR HAVE A CORROSION RESISTANT COATING THAT EXCEEDS F.M. APPROVAL STANDARD 4470, UNLESS NOTED OTHERWISE

B. WOOD BLOCKING (2" NOMINAL THICKNESS):

1. CONCRETE: $\frac{3}{8}$ " ϕ SELF-TAPPING MASONRY ST. STL. SCREW AT 16" O.C., MAX., LENGTH AS REQUIRED FOR 1 $\frac{3}{4}$ " MIN. EMBEDMENT. -OR- $\frac{5}{16}$ " ϕ DEFORMED OR FLUTED NAIL AT 12" O.C. MAX., LENGTH AS REQUIRED FOR 1 $\frac{1}{4}$ " MIN. EMBEDMENT. COUNTERSINK HEADS AS REQUIRED.
2. CONCRETE BLOCK (CMU): $\frac{3}{8}$ " ϕ SELF-TAPPING MASONRY ST. STL. SCREWS AT 12" O.C. MAX., LENGTH AS REQUIRED FOR 1 $\frac{3}{4}$ " MIN. EMBEDMENT. -OR- $\frac{3}{8}$ " ϕ HEAVY DUTY SLEEVE STYLE EXPANSION BOLT ANCHOR (RAWL-BOLT) @ 18" O.C., LENGTH AS REQUIRED FOR 2" MIN. EMBEDMENT. COUNTERSINK HEADS AS REQUIRED.
3. BRICK: $\frac{3}{8}$ " ϕ SELF-TAPPING MASONRY ST. STL. SCREWS AT 12" O.C. MAX., LENGTH AS REQUIRED FOR 1 $\frac{3}{4}$ " MIN. EMBEDMENT. -OR- $\frac{3}{8}$ " ϕ HEAVY DUTY SLEEVE STYLE EXPANSION BOLT ANCHOR (RAWL-BOLT) @ 18" O.C., LENGTH AS REQUIRED FOR 2" MIN. EMBEDMENT. COUNTERSINK HEADS AS REQUIRED.
4. STRUCTURAL STEEL: $\frac{1}{4}$ " ϕ SELF-DRILLING, SELF-TAPPING ST. STL. SCREWS WITH "WINGS" @ 16" O.C. MAX., LENGTH AS REQUIRED FOR $\frac{1}{2}$ " MIN. PENETRATION OF THREADS THROUGH STEEL. COUNTERSINK HEADS AS REQUIRED.
5. METAL DECK: $\frac{1}{4}$ " ϕ SELF-TAPPING ST. STL. "DECK" SCREWS AT 12" O.C. MAX., LENGTH AS REQUIRED FOR $\frac{1}{2}$ " MIN. PENETRATION THROUGH UNDERSIDE OF DECK COUNTERSINK HEADS REQUIRED.
6. LIGHT GAGE METAL FRAMING: $\frac{1}{4}$ " ϕ SELF-TAPPING ST. STL. "DECK" SCREWS, 1 MIN. PER FRAMING MEMBER, LENGTH AS REQ'D FOR $\frac{1}{2}$ " MIN. PENETRATION THROUGH FRAMING. COUNTERSINK HEADS AS REQUIRED.



A/R/C Associates Incorporated
601 NORTH FERN CREEK AVENUE SUITE 100
ORLANDO, FLORIDA 32803-4899
TEL (407)896-7875 FAX (407)898-6043

TITLE FASTENER SCHEDULE
(GENERAL NOTES)

SCALE N.T.S.



ACAD FILE # 14059.00-802

DATE:

PLOT SCALE : 3"=1'

PROJECT NUMBER: 14059.00

FASTENER SCHEDULE

B. WOOD BLOCKING (2" NOMINAL THICKNESS):

1. PLYWOOD DECK: $\frac{1}{4}$ " ϕ SELF-TAPPING ST. STL. 'DECK' SCREWS AT 8" O.C. MAX., LENGTH AS REQUIRED FOR $\frac{1}{2}$ " MIN. PENETRATION THROUGH UNDERSIDE OF DECK COUNTERSINK HEADS AS REQUIRED.
2. WOOD BLOCKING: $\frac{1}{4}$ " ϕ SELF-TAPPING ST. STL. 'DECK' SCREWS AT 16" O.C. MAX., LENGTH AS REQUIRED FOR $\frac{1}{2}$ " MIN. EMBEDMENT -OR-TWO CONTINUOUS $\frac{3}{8}$ " BEADS OF CONSTRUCTION ADHESIVE THE FULL LENGTH OF THE BOARD TO BE APPLIED AND 12d NAILS @ 4" O.C. (IN TWO ROWS-STAGGERED).

C. PLYWOOD SHEATHING:

1. CONCRETE: $\frac{1}{4}$ " ϕ SELF-TAPPING MASONRY SCREWS AT 12" O.C. MAX. (AT EDGES), AND 16" O.C. MAX. IN THE FIELD, LENGTH AS REQUIRED FOR $\frac{1}{2}$ " MIN. EMBEDMENT, -OR- $\frac{1}{4}$ " ϕ RAWL-SPLICE OR OLYMPIC FLUTTED NAIL AT THE SAME SPACING AS NOTED ABOVE, LENGTH AS REQ'D FOR $\frac{1}{4}$ " MIN. EMBEDMENT.
2. CONCRETE BLOCK (CMU): $\frac{1}{4}$ " ϕ SELF-TAPPING MASONRY SCREWS AT 12" O.C. MAX. (AT EDGES), AND 16" O.C. MAX. IN THE FIELD, LENGTH AS REQUIRED FOR $\frac{1}{2}$ " MIN. EMBEDMENT, -OR- $\frac{1}{4}$ " ϕ RAWL-SPLICE OR OLYMPIC FLUTTED NAIL AT THE SAME SPACING AS NOTED ABOVE, LENGTH AS REQ'D FOR $\frac{1}{4}$ " MIN. EMBEDMENT.
3. BRICK: $\frac{1}{4}$ " ϕ SELF-TAPPING MASONRY SCREWS AT 12" O.C. MAX. (AT EDGES), AND 16" O.C. MAX. IN THE FIELD, LENGTH AS REQUIRED FOR $\frac{1}{2}$ " MIN. EMBEDMENT, -OR- $\frac{1}{4}$ " ϕ RAWL-SPLICE OR OLYMPIC FLUTTED NAIL AT THE SAME SPACING AS NOTED ABOVE, LENGTH AS REQ'D FOR $\frac{1}{4}$ " MIN. EMBEDMENT.
4. STRUCTURAL STEEL: #10 ϕ SELF-DRILLING, SELF-TAPPING SCREWS WITH 'WINGS' @ 12" O.C. MAX. (AT EDGES), AND 16" O.C. MAX. IN THE FIELD, LENGTH AS REQUIRED FOR $\frac{1}{2}$ " MIN. PENETRATION OF THREADS THROUGH STEEL.
5. METAL DECK: #10 ϕ SELF-TAPPING 'DECK' SCREWS AT 12" O.C. MAX. (AT EDGES), AND 16" O.C. MAX. IN THE FIELD, LENGTH AS REQUIRED FOR $\frac{1}{2}$ " MIN. PENETRATION THROUGH UNDERSIDE OF DECK.
6. LIGHT GAGE METAL FRAMING: #10 ϕ SELF-TAPPING 'DECK' SCREWS AT 12" O.C. MAX. (AT EDGES), AND 16" O.C. MAX. ALONG EACH FRAMING MEMBER, LENGTH AS REQ'D FOR $\frac{1}{2}$ " MIN. PENETRATION THROUGH FRAMING. FRAMING TO BE SPACED AT 24" O.C. MAX., UNLESS NOTED OTHERWISE BY DETAILS.
7. WOOD FRAMING: #10 ϕ SELF-TAPPING 'DECK' SCREWS AT 12" O.C. MAX. ALONG EACH FRAMING MEMBER, LENGTH AS REQ'D FOR $\frac{1}{2}$ " MIN. EMBEDMENT -OR- 8d ANNULAR RING NAILS AT 6" O.C. MAX. (AT EDGES) AND 12" O.C. MAX. IN FIELD. DECREASE SPACING AT EDGES AND RAKE ZONES TO 4" O.C. MAX. AT EDGES, AND 8" O.C. MAX. IN FIELD.



A/R/C Associates Incorporated

601 NORTH FERN CREEK AVENUE SUITE 100
ORLANDO, FLORIDA 32803-4899
TEL. (407)896-7875 FAX (407)898-6043

TITLE FASTENER SCHEDULE
(GENERAL NOTES)

SCALE N.T.S.



ACAD FILE # 1405900-803

DATE:

PLOT SCALE : 3"=1'

PROJECT NUMBER: 1405900

FASTENER SCHEDULE

METAL DECK:

- D. INSTALL AND SECURE PER STEEL JOIST INSTITUTE (SJI) GUIDELINES, SEE SPECIFICATIONS OR STRUCTURAL DETAILS FOR ADDITIONAL INFORMATION.

E. MINOR STRUCTURAL STEEL:

1. ANCHORAGE OF LOAD BEARING STEEL ANF LARGE STEEL FABRICATIONS, (SUCH AS LADDERS), IS TO BE AS DEFINED BY THE STRUCTURAL ENGINEERING DRAWINGS, OR AS ENGINEERED BY THE SUPPLIER. MINOR STRUCTURAL STEEL WOULD BE CONSIDERED ITEMS SUCH AS SUPPORT STANDS, WALL LEDGER ANGLES, ETC.
2. CONCRETE: $\frac{3}{8}$ " ϕ HEAVY-DUTY, SLEEVE STYLE EXPANSION BOLT ANCHOR (RAWL-BOLT) @ 16' O.C., LENGTH AS REQ'D FOR 2' MIN. EMBEDMENT.
3. CONCRETE BLOCK (CMU): $\frac{3}{8}$ " ϕ HEAVY-DUTY, SLEEVE STYLE EXPANSION BOLT ANCHOR (RAWL-BOLT) @ 16' O.C., LENGTH AS REQ'D FOR 2' MIN. EMBEDMENT. IF CMU IS HOLLOW, BREAK INTO BLOCK ABOVE, AND FILL CELL OF BLOCK TO RECEIVE ANCHOR SOLID, PERFORM ANY REPAIR AND PATCHING NECESSARY
4. BRICK: $\frac{3}{8}$ " ϕ HEAVY-DUTY, SLEEVE STYLE EXPANSION BOLT ANCHOR (RAWL-BOLT) @ 16' O.C., LENGTH AS REQ'D FOR 2' MIN. EMBEDMENT.
5. STRUCTURAL STEEL: $\frac{1}{4}$ " ϕ SELF-DRILLING, SELF-TAPPING SCREW @ 16' O.C., LENGTH AS REQUIRED FOR $\frac{1}{2}$ " MIN. PENETRATION OF THREADS THROUGH STEEL.

F. RIGID INSULATION BOARD:

1. INSTALL AND SECURE PER THE MANUFACTURE'S RECOMMENDATIONS, TESTING AND APPROVALS TO COMPLY WITH THE DESIGN REQUIREMENTS OF THIS PROJECT. SEE PROJECT SPECIFICATIONS AND FASTENING DETAIL FOR ADDITIONAL INFORMATION.

G. ROOF MEMBRANE SYSTEM:

1. INSTALL AND SECURE PER THE MANUFACTURE'S RECOMMENDATIONS, TESTING AND APPROVALS TO COMPLY WITH THE DESIGN REQUIREMENTS OF THIS PROJECT. SEE PROJECT SPECIFICATIONS AND FASTENING DETAIL FOR ADDITIONAL INFORMATION.

H. FLANGED SHEETMETAL (EDGE METAL)

1. WOOD BLOCKING: #12 GAGE x $1\frac{1}{2}$ " ANNULAR RING STAINLESS STEEL ROOFING NAILS AT 4' O.C. MAX., STAGGERED IN 2 ROWS AT $\frac{3}{4}$ " \pm FROM EDGES OF FLANGE.
2. LIGHTGAGE METAL: #12 ϕ SELF TAPPING, STAINLESS STEEL, FLAT OR WAFER HEAD SCREWS AT 12' O.C. MAX.
3. CONCRETE: $\frac{1}{4}$ " ϕ x $1\frac{1}{2}$ " ZAMAC 'NAIL-IN' DRIVE PIN, EXPANSION TYPE FASTENER @ 12' O.C., MAX. WITH STAINLESS STEEL DRIVE PIN.



A/R/C Associates Incorporated

601 NORTH FERN CREEK AVENUE SUITE 100
ORLANDO, FLORIDA 32803-4899
TEL. (407)896-7875 FAX (407)898-6043

TITLE FASTENER SCHEDULE
(GENERAL NOTES)

SCALE N.T.S.



ACAD FILE # 14059.00-804

DATE:

PLOT SCALE : 3"=1'

PROJECT NUMBER: 14059.00

FASTENER SCHEDULE

I. CLEATS FOR SHEETMETAL:

1. WOOD BLOCKING: #12 GAGE x 1½" ANNULAR RING STAINLESS STEEL ROOFING NAILS AT 8' O.C. MAX., (4' O.C. AT CORNER ZONES OF ROOF)
2. LIGHTGAGE METAL: #12φ SELF TAPPING, STAINLESS STEEL, FLAT OR WAFER HEAD SCREWS AT 12' O.C. MAX.
3. CONCRETE: ¼"φ x 1½" ZAMAC 'NAIL-IN' DRIVE PIN, EXPANSION TYPE FASTENER @ 12" O.C., MAX. WITH STAINLESS STEEL DRIVE PIN.
4. CONCRETE BLOCK: ¼"φ x 1½" ZAMAC 'NAIL-IN' DRIVE PIN, EXPANSION TYPE FASTENER @ 12" O.C., MAX. WITH STAINLESS STEEL DRIVE PIN.
5. BRICK: ¼"φ x 1½" ZAMAC 'NAIL-IN' DRIVE PIN, EXPANSION TYPE FASTENER @ 12" O.C., MAX. WITH STAINLESS STEEL DRIVE PIN.

J. APPLIED SHEETMETAL (COUNTERFLASHING, TERMINATION BAR, ETC.):

1. WOOD BLOCKING: 12"φ SELF-TAPPING, STAINLESS STEEL SCREWS AT 8' O.C. MAX., LENGTH AS REQ'D FOR 1¼" MIN. EMBEDMENT INTO WOOD. IF EXPOSED TO THE WEATHER PROVIDE METAL BACKED NEOPORENE SEALING WASHERS OR USE 'SCOTS' TYPE SCREW WITH INTEGRAL SEALING WASHER.
2. SHEETMETAL BACKING: 12"φ SELF-TAPPING STAINLESS STEEL SCREWS AT 8' O.C. MAX., LENGTH AS REQ'D FOR ½" MIN. PENETRATION OF THREADS THROUGH STEEL. IF EXPOSED TO THE WEATHER PROVIDE METAL BACKED NEOPORENE SEALING WASHERS OR USE 'SCOTS' TYPE SCREW WITH INTEGRAL SEALING WASHER.
3. CONCRETE: ¼"φ SELF-TAPPING STAINLESS STEEL MASONRY SCREWS AT 8' O.C. MAX. LENGTH AS REQUIRED FOR 1¼" MIN. EMBEDMENT. -OR- ¼"φ x 1½" ZAMAC 'NAILIN' DRIVE PIN, EXPANSION TYPE FASTENERS @ 8' O.C. MAX., WITH STAINLESS STEEL DRIVE PIN. IF EXPOSED TO THE WEATHER PROVIDE METAL BACKED NEOPRENE SEALING WASHERS-INCREASE LENGTH IF REQ'D BY OVERLYING FINISH FOR 1¼" MIN. EMBEDMENT INTO CONCRETE (BLOCK)
4. CONCRETE BLOCK: ¼"φ SELF-TAPPING STAINLESS STEEL MASONRY SCREWS AT 8' O.C. MAX. LENGTH AS REQUIRED FOR 1¼" MIN. EMBEDMENT. -OR- ¼"φ x 1½" ZAMAC 'NAILIN' DRIVE PIN, EXPANSION TYPE FASTENERS @ 8' O.C. MAX., WITH STAINLESS STEEL DRIVE PIN. IF EXPOSED TO THE WEATHER PROVIDE METAL BACKED NEOPRENE SEALING WASHERS- INCREASE LENGTH IF REQ'D BY OVERLYING FINISH FOR 1¼" MIN. EMBEDMENT INTO CONCRETE (BLOCK)
5. BRICK: ¼"φ SELF-TAPPING STAINLESS STEEL MASONRY SCREWS AT 8' O.C. MAX. LENGTH AS REQUIRED FOR 1¼" MIN. EMBEDMENT. -OR- ¼"φ x 1½" ZAMAC 'NAILIN' DRIVE PIN, EXPANSION TYPE FASTENERS @ 8' O.C. MAX., WITH STAINLESS STEEL DRIVE PIN. IF EXPOSED TO THE WEATHER PROVIDE METAL BACKED NEOPRENE SEALING WASHERS



A/R/C Associates Incorporated

601 NORTH FERN CREEK AVENUE SUITE 100
ORLANDO, FLORIDA 32803-4899
TEL (407)896-7875 FAX (407)898-6043

TITLE FASTENER SCHEDULE
(GENERAL NOTES)

SCALE N.T.S.



ACAD FILE # 14059.00-805

DATE:

PLOT SCALE : 3" = 1'-0"

PROJECT NUMBER: 14059.00

ABBREVIATIONS

ADJ	ADAJACENT	E	EAST
A/C	AIR CONDITIONING	ELEC	ELECTRIC(AL)
ALT	ALTERNATE	EL	ELEVATION
ALUM	ALUMINUM	EQ	EQUAL
ANOD	ANODIZED	EQUIP	EQUIPMENT
APPROX	APPROXIMATE	EXH	EXHAUST
ARCH	ARCHITECT(URAL)	EXIST	EXISTING
		EXP	EXPANSION
		EXT	EXTERIOR
BRG	BEARING		
BIT	BITUMEINOUS		
BLK	BLOCK	FIN	FINISH(ED)
BLKG	BLOCKING	FLASH	FLASHING
BD	BOARD	FLEX	FLEXIBLE
BOT	BOTTOM	FTG	FOOTING
BLDG	BUILDING	FDN	FOUNDATION
BUR	BUILT UP ROOFING		
		GA	GAGE (GAUGE)
CB	CATCH BASIN	GALV	GALVANIZED
CLG	CEILING	GWB	GYPSTUM WALL BOARD
COL	COLUMN		
COMP	COMPRESS (ED), (ION), (IBLE)	HDWE	HARDWARE
CONC	CONCRETE	HVAC	HEATING/VENTILATION /AIR CONDITIONING
CMU	CONCRETE MASONRY UNIT		
CONST	CONSTRUCTION	HT	HEIGHT
CONT	CONTINUOUS OR CONTINUE	HM	HOLLOW METAL
CJ	CONTROL JOINT	HORZ	HORIZONTAL
CTR	CENTER		
C.F.	CUBIC FOOT	INCL	INCLUDE(D), (ING)
		ID	INSIDE DIAMETER
DEMO	DEMOLISH, DEMOLITION	INSUL	INSULATE(D), (ION)
DET	DETAIL	INT	INTERIOR
DIAG	DIAGONAL		
DIA	DIAMETER	JT	JOINT
DIM	DIMENSION		
DS	DOWNSPOUT		
DWG	DRAWING		

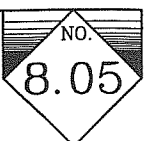


A/R/C Associates Incorporated

601 NORTH FERN CREEK AVENUE SUITE 100
ORLANDO, FLORIDA 32803-4899
TEL (407)896-7875 FAX (407)898-6043

TITLE STANDARD ABBREVIATIONS

SCALE N.T.S.



ACAD FILE # 14059.00-806

DATE:

PLOT SCALE : 3" = 1'-0"

PROJECT NUMBER: 14059.00

ABBREVIATIONS

LW	LIGHTWEIGHT	RAD	RADIUS
LLH	LONG LEG HORIZONTAL	RWL	RAINWATER LEADER
LLV	LONG LEG VERTICAL	REF	REFERENCE
		RCP	REINFORCED CONC. PIPE
MFR	MANUFACTURE(ER)	REV	REVISION
MATL	MATERIAL(S)	RD	ROOF DRAIN
MAX	MAXIMUM	RO	ROUGH OPENING
MECH	MECHANIC(AL)		
MTL	METAL	SCH	SCHEDULE
MIN	MINIMUM	SEAL	SEALANT
MISC	MISCELLANEOUS	SHT	SHEET
MTD	MOUNTED(ING)	SIM	SIMILAR
		S	SOUTH
NOM	NOMINAL	SPK	SPEAKER
N	NORTH	SPEC	SPECIFICATION(S)
NIC	NOT IN CONTRACT	SQ	SQUARE
NTS	NOT TO SCALE	SF	SQUARE FEET
NO	NUMBER	ST STL	STAINLESS STEEL
		STD	STANDARD
OC	ON CENTER(S)	STL	STEEL
OPG	OPENING	STRUCT	STRUCTURAL
OPP	OPPOSITE		
OD	OUTSIDE DIAMETER/DIMENSION	THK	THICK(NESS)
		T AND G	TONGUE AND GROOVE
PTD	PAINT(ED)	TYP	TYPICAL
PR	PAIR		
PL	PLATE	UNO	UNLESS NOTED OTHERWISE
PWD	PLYWOOD		
PVC	POLYVINYL CHLORIDE	VERT	VERTICAL
PSF	POUNDS PER SQUARE FOOT		
PSI	POUNDS PER SQUARE INCH	WWF	WELDED WIRE FABRIC
PC	PRECAST CONCRETE	W	WEST
PT	PRESSURE TREATED	WM	WIRE MESH
		W/	WITH
		W/O	WITHOUT
		WD	WOOD



A/R/C Associates Incorporated

601 NORTH FERN CREEK AVENUE SUITE 100
ORLANDO, FLORIDA 32803-4899
TEL (407)896-7875 FAX (407)898-6043

TITLE STANDARD ABBREVIATIONS

SCALE N.T.S.

