

**NOTE:**  
 RESECURE EXISTING  
 WOOD BLOCKING TO  
 EXISTING MASONRY  
 PER FASTENER  
 SCHEDULE B-1 & B-2  
 (DWG. 8.01)

- |  |   |
|--|---|
| <ul style="list-style-type: none"> <li>3. EXIST. LT. WT. CONC. OVER PRECAST SLAB</li> <li>4. EXIST. PARAPET BLOCKWALL</li> <li>18. TAPERED RIGID INSULATION</li> <li>20. GYPSUM ROOF BOARD</li> <li>32. CONTINUOUS CLEAT</li> <li>42. 5/8" PLYWOOD - SCREW FASTEN @ 8' O.C. (MAX.) TOP &amp; BOTTOM &amp; STAGGER - COUNTERSINK HEADS</li> <li>43. ROUND OFF THIS EDGE</li> <li>51. DRY-IN MEMBRANE</li> <li>56. MOD. BIT. FLASHING - CAP</li> <li>57. NON-COMBUSTIBLE CANT</li> <li>58. MOD. BIT. FLASHING - INTERPLY</li> <li>60. PARAPET CAP-SEE DET. (3.01)</li> </ul> | <ul style="list-style-type: none"> <li>65. MODIFIED BITUMEN CAP SHEET</li> <li>67. VENTED BASE SHEET</li> <li>78. 2-MOD. BIT. INTERPLY SHEETS</li> <li>133. EXIST. WOOD BLK'G TO REMAIN, REPLACE WHERE DAMAGED OR DETERIORATED</li> <li>A. 16 GA. G90 GALV. METAL BLOCKING - SEE DETAIL (3.01)</li> <li>B. 16 GA. G90 GALV. METAL CONT. 3'X3' ANGLE- SCREW FASTEN @ 8' O.C. (MAX.) SIDE &amp; BOTTOM</li> <li>C. SIDE-MOUNTED BASE FOR AIR TERMINALS - ANCHOR TO INT. FACE OF COPING CAP W/ (2)-ST. STL. SCREWS SEE DETAIL (9.02)</li> <li>D. CONTINUOUS 24 GA. ST. STL. SKIRT METAL</li> </ul> |
|--|---|

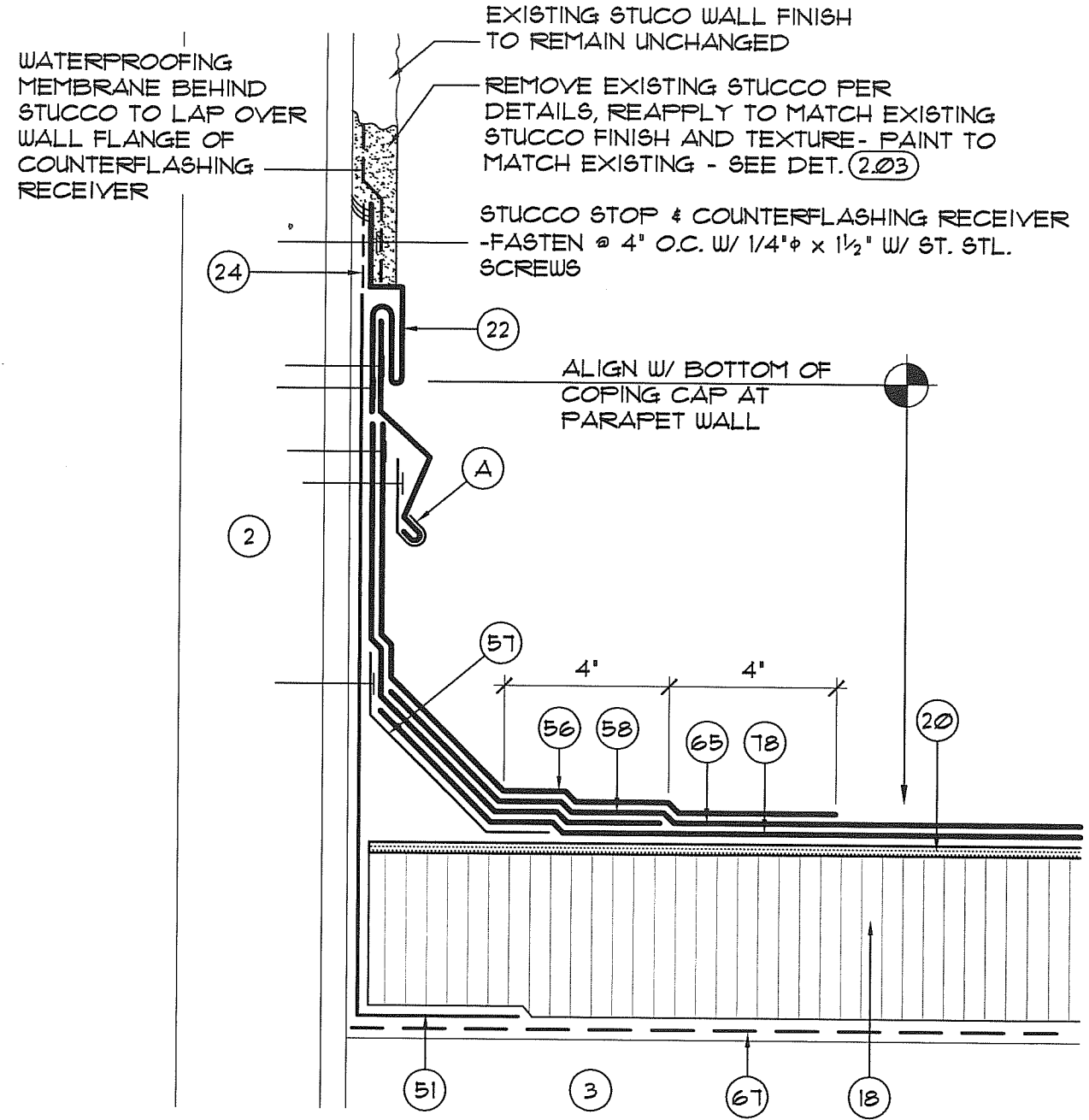


**A/R/C Associates Incorporated**  
 601 NORTH FERN CREEK AVENUE SUITE 100  
 ORLANDO, FLORIDA 32803-4899  
 TEL (407)896-7875 FAX (407)898-8043

TITLE TYPICAL PARAPET WALL FLASHING DETAIL  
SCALE 3"=1'



ACAD FILE # 14021.00-201  
 DATE: ...  
 PLOT SCALE : 3" = 1'-0"  
 PROJECT NUMBER: 14021.00



WATERPROOFING MEMBRANE BEHIND STUCCO TO LAP OVER WALL FLANGE OF COUNTERFLASHING RECEIVER

EXISTING STUCCO WALL FINISH TO REMAIN UNCHANGED

REMOVE EXISTING STUCCO PER DETAILS, REAPPLY TO MATCH EXISTING STUCCO FINISH AND TEXTURE - PAINT TO MATCH EXISTING - SEE DET. (203)

STUCCO STOP & COUNTERFLASHING RECEIVER - FASTEN @ 4" O.C. W/ 1/4" φ x 1 1/2" W/ ST. STL. SCREWS

ALIGN W/ BOTTOM OF COPING CAP AT PARAPET WALL

- |  |  |
|--|--|
| 2. EXIST. STUCCO OVER SHEATHING AND STUD WALL FRAMING                | 51. DRY-IN MEMBRANE  |
| 3. EXIST. LT. WT. CONC. OVER STRUCT. CONC. DECK                      | 56. MOD. BIT. FLASHING - CAP   |
| 18. TAPERED RIGID INSULATION   | 57. NON-COMBUSTIBLE CANT   |
| 20. GYPSUM ROOF BOARD  | 58. MOD. BIT. FLASHING - INTERPLY  |
| 22. COUNTERFLASHING & RECEIVER W/ RETAINER CLEATS - SEE DETAIL (202) | 65. MODIFIED BITUMEN CAP SHEET   |
| 24. FLASHING TAPE  | 67. VENTED BASE SHEET  |
|  | 78. MOD. BIT. INTERPLY SHEET   |
|  | A. 3" WIDE 26 GA. ST. STL. RETAINER CLEAT W/ 2 FASTENERS @ 18" O.C. - BEND UP IN FIELD TO SECURE COUNTERFLASHING |



**A/R/C Associates Incorporated**  
 601 NORTH FERN CREEK AVENUE SUITE 100  
 ORLANDO, FLORIDA 32803-4899  
 TEL (407)896-7875 FAX (407)898-6043

TITLE **BASE FLASHING AT WALL DETAIL**  
 SCALE 3" = 1'

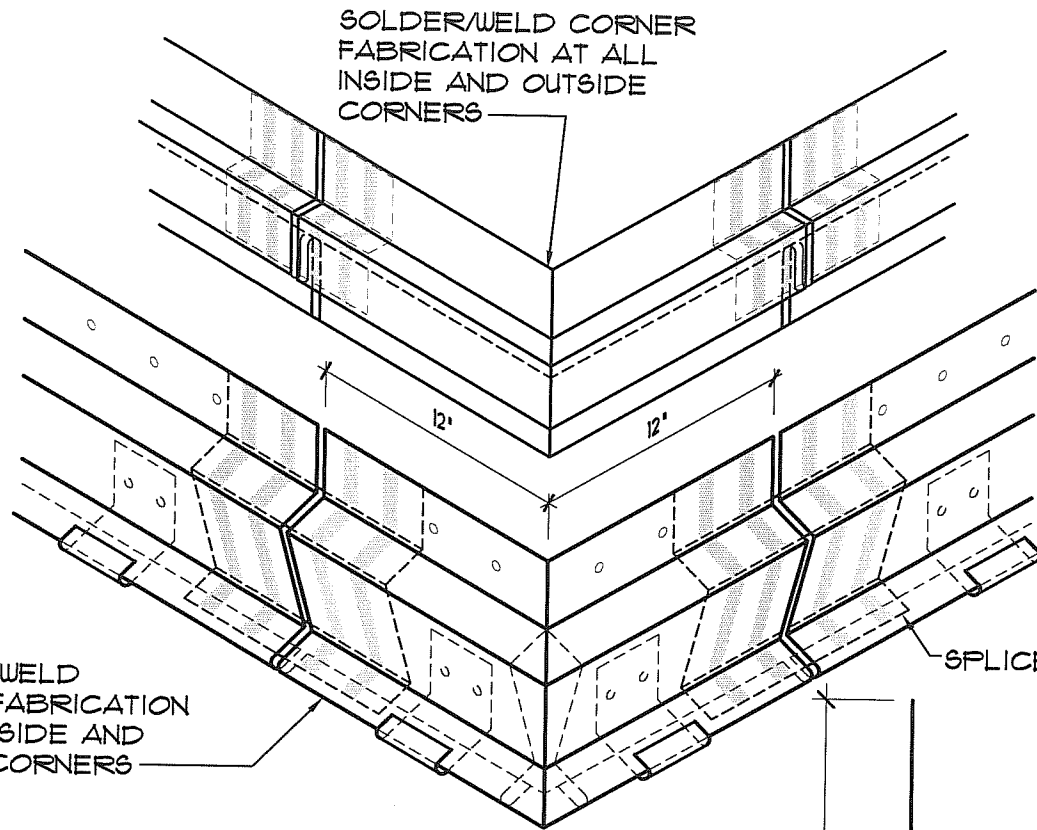


ACAD FILE # 14021.00-202

DATE

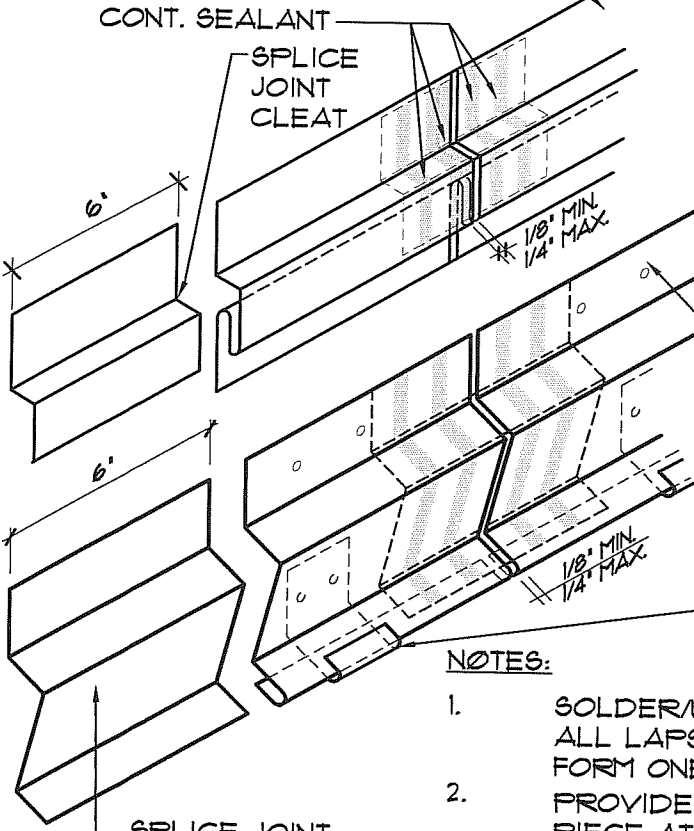
PLOT SCALE : 3" = 1'-0"

PROJECT NUMBER: 14021.00



SOLDER/WELD CORNER FABRICATION AT ALL INSIDE AND OUTSIDE CORNERS

24 GA. ST. STL. CF. RECEIVER & STUCCO STOP



CONT. SEALANT

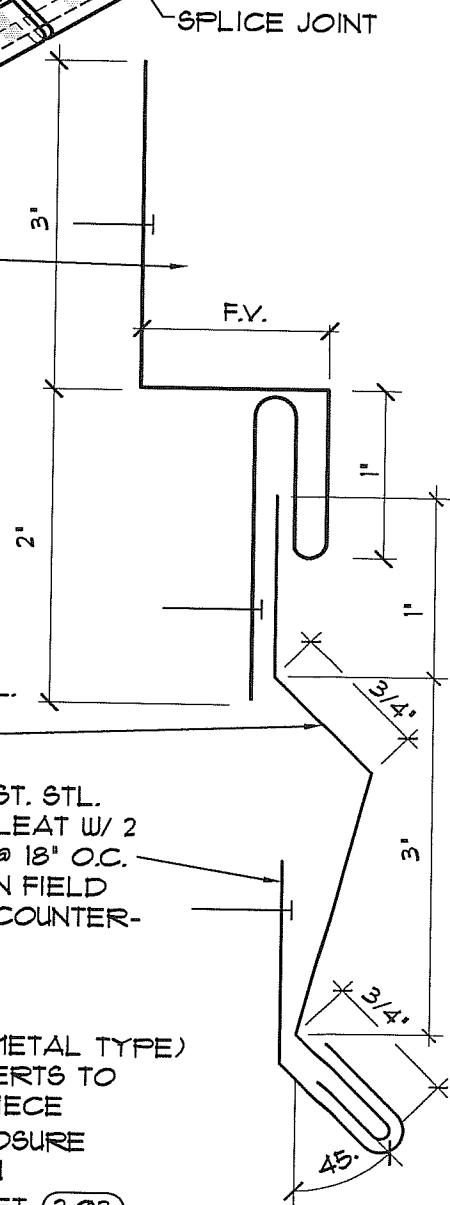
SPlice JOINT CLEAT

1/8" MIN. 1/4" MAX.

1/8" MIN. 1/4" MAX.

24 GA. ST. STL. COUNTER-FLASHING

NEW 26 GA. ST. STL. RETAINER CLEAT W/ 2 FASTENERS @ 18" O.C. - BEND UP IN FIELD TO SECURE COUNTER-FLASHING



NOTES:

1. SOLDER/WELD (AS PER METAL TYPE) ALL LAPS & CORNER INSERTS TO FORM ONE CONTINUOUS PIECE
2. PROVIDE SOLDERED CLOSURE PIECE AT END CONDITION
3. STUCCO REPAIR - SEE DET. (2.03)



**A/R/C Associates Incorporated**  
 601 NORTH FERN CREEK AVENUE SUITE 100  
 ORLANDO, FLORIDA 32803-4899  
 TEL (407)896-7875 FAX (407)898-6043

TITLE TWO-PIECE RECEIVER AND COUNTERFLASHING DETAILS

SCALE N.T.S.

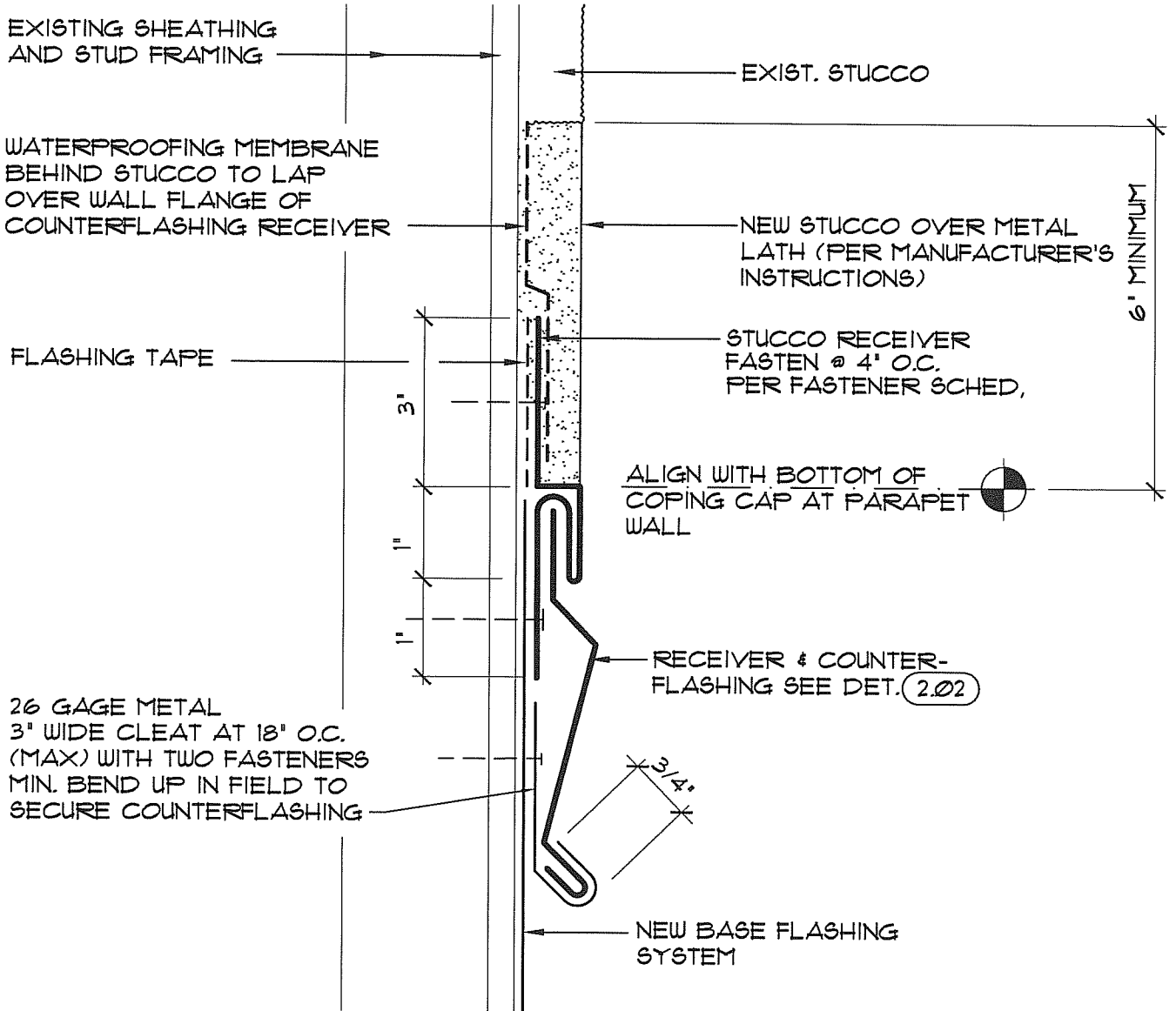


ACAD FILE # 1402100-203

CATALOG #

PLOT SCALE: 1=4

PROJECT NUMBER: 1402100



**NOTE:**

1. CONTRACTOR TO FIELD VERIFY ALL DIMENSIONS NOT SHOWN
2. JOIN PER METAL TYPE TO FORM ONE CONTINUOUS PIECE - SEE SPECIFICATIONS
3. DIMENSIONS NOT GIVEN TO BE FIELD VERIFIED



**A/R/C Associates Incorporated**

601 NORTH FERN CREEK AVENUE SUITE 100  
ORLANDO, FLORIDA 32803-4899  
TEL (407)896-7875 FAX (407)898-6043

TITLE STUCCO FINISH REPAIR AT COUNTER FLASHING DETAIL

SCALE 3' = 1'-0"

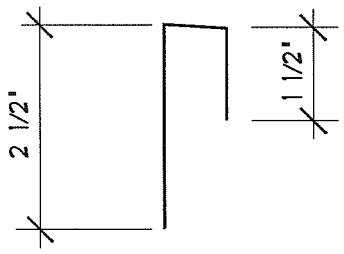
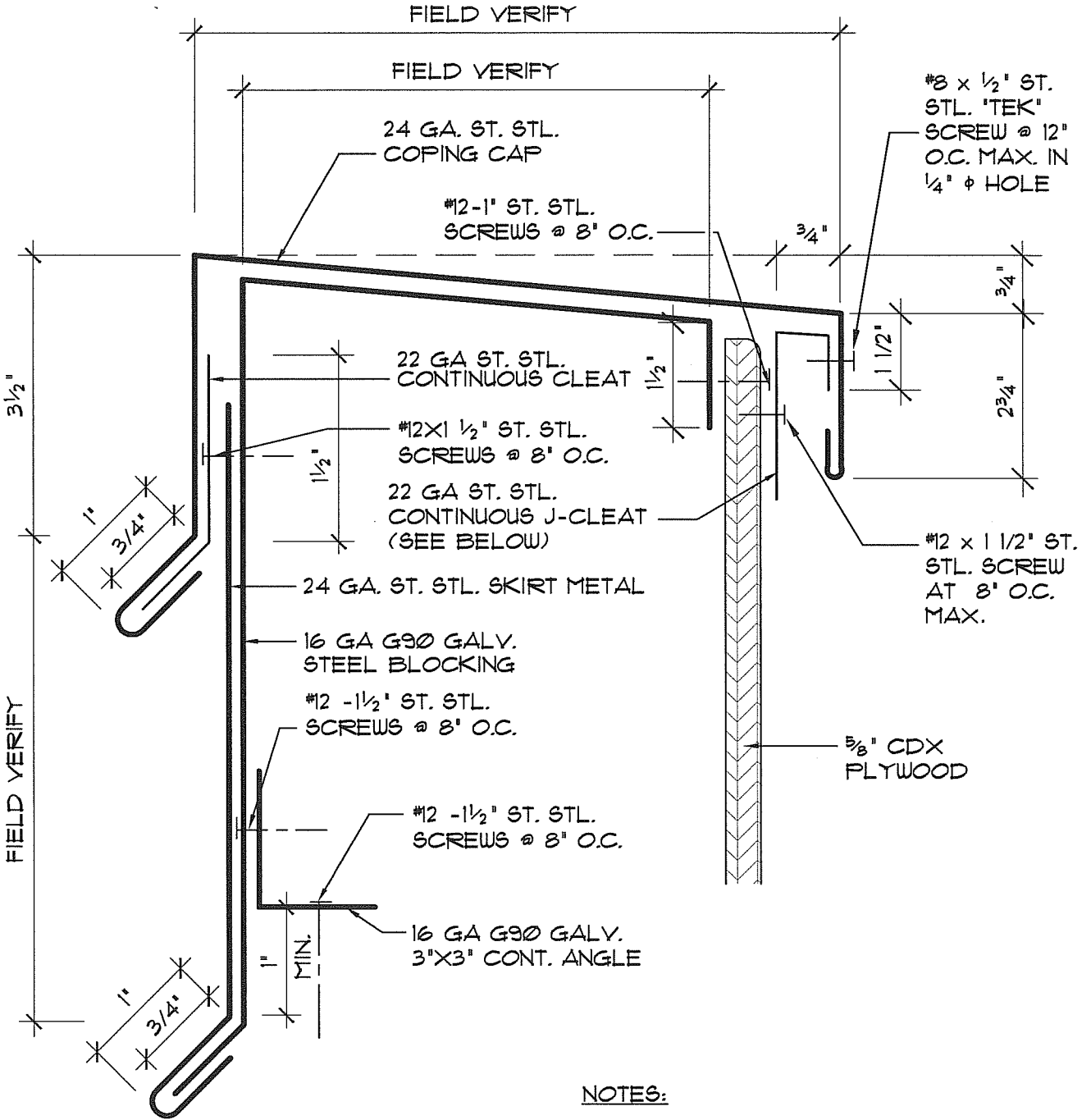


ACAD FILE # 14021.00-301

DATE: ..

PLOT SCALE : 3" = 1'-0"

PROJECT NUMBER: 14021.00



J-CLEAT:

**NOTES:**

1. SOLDERWELD (AS PER METAL TYPE) ALL LAPS & CORNER INSERTS TO FORM ONE CONTINUOUS PIECE
2. DIMENSIONS NOT GIVEN TO BE FIELD VERIFIED
3. MODIFIED BITUMEN FLASHING NOT SHOWN FOR CLARITY
4. SEE DETAIL (302) FOR TYPICAL SPLICE JOINT DETAIL

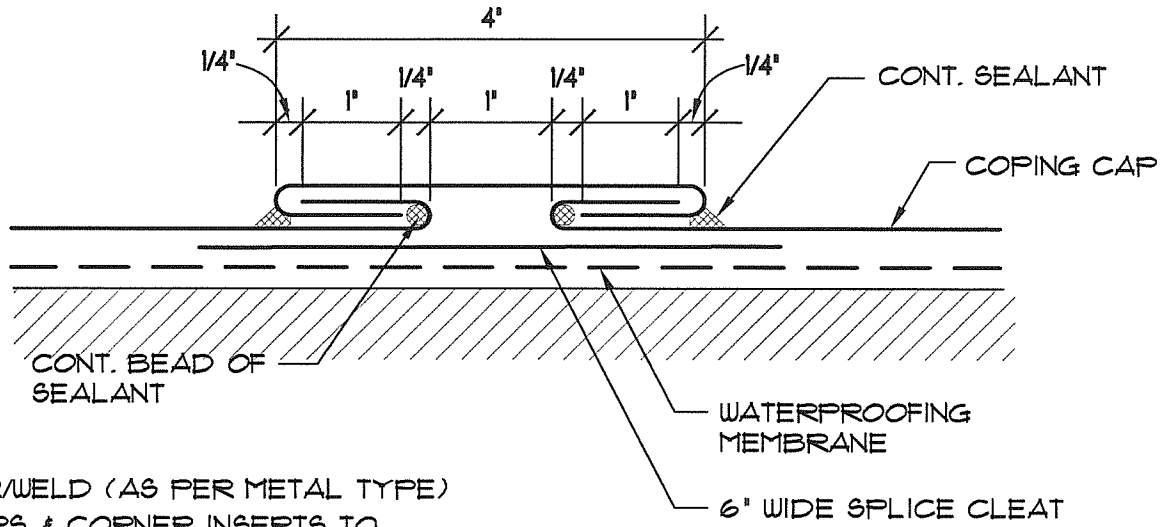


**A/R/C Associates Incorporated**  
 601 NORTH FERN CREEK AVENUE SUITE 100  
 ORLANDO, FLORIDA 32803-4899  
 TEL (407)896-7875 FAX (407)898-6043

TITLE TYP. RAISED PARAPET CAP & BLOCKING FABRICATIONS

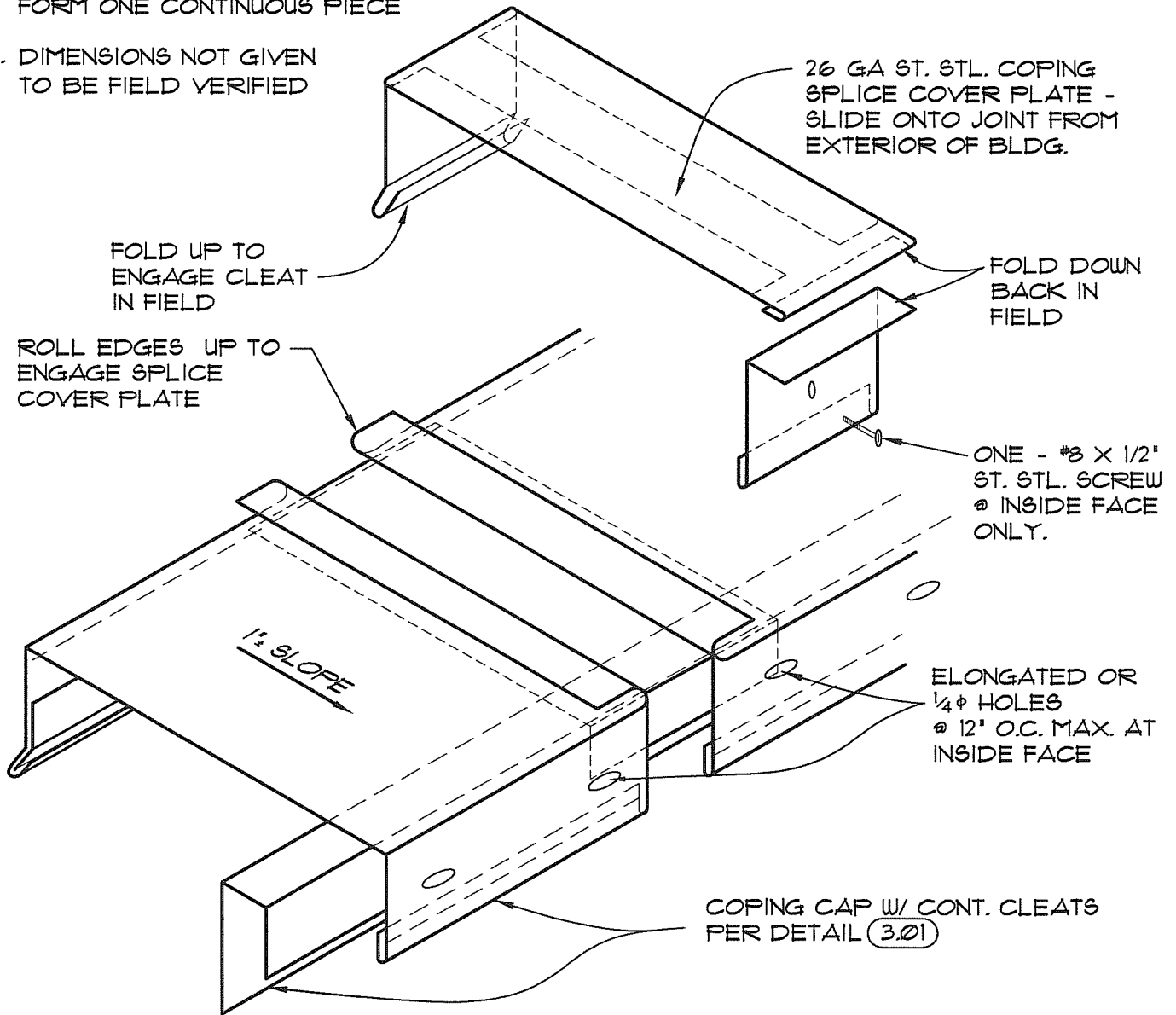
SCALE N.T.S.





**NOTES:**

1. SOLDER/WELD (AS PER METAL TYPE) ALL LAPS & CORNER INSERTS TO FORM ONE CONTINUOUS PIECE
2. DIMENSIONS NOT GIVEN TO BE FIELD VERIFIED



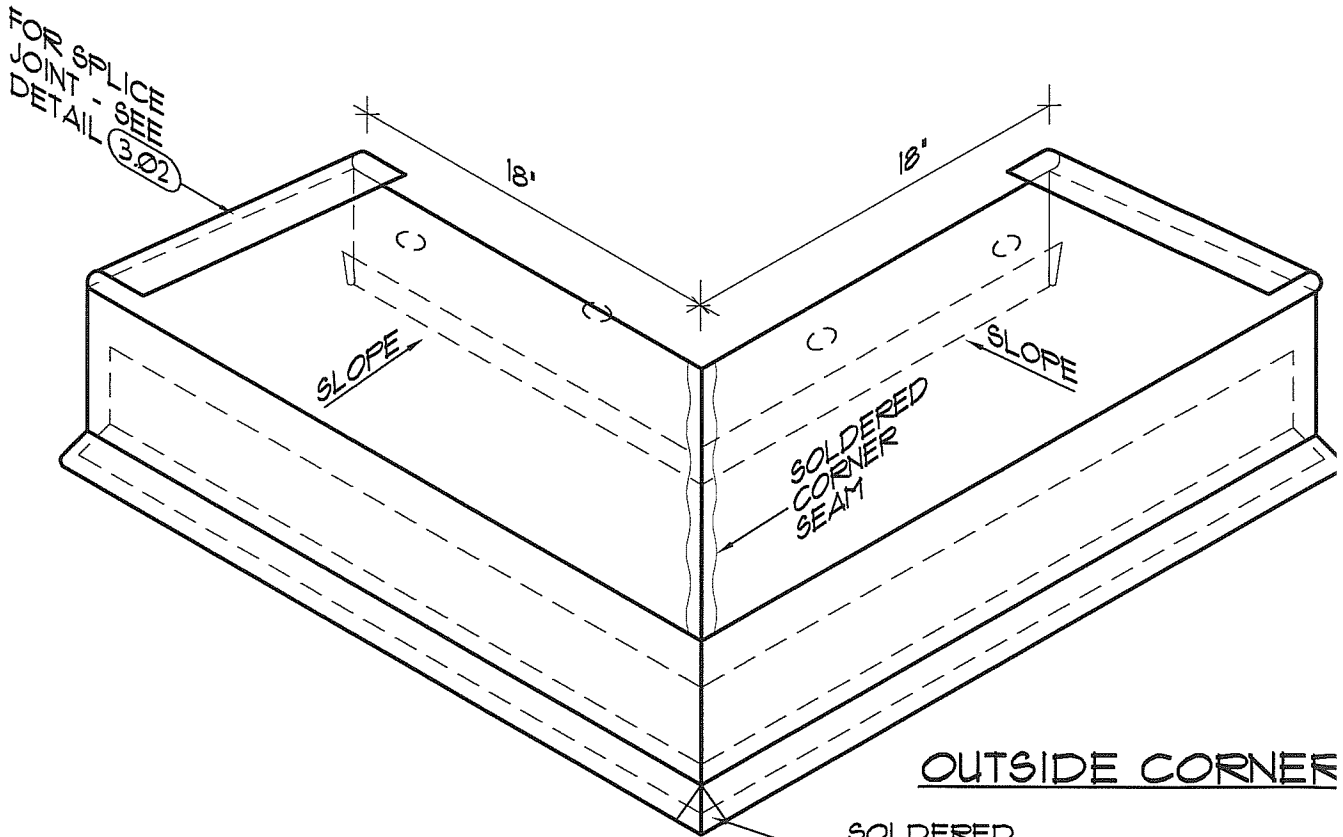
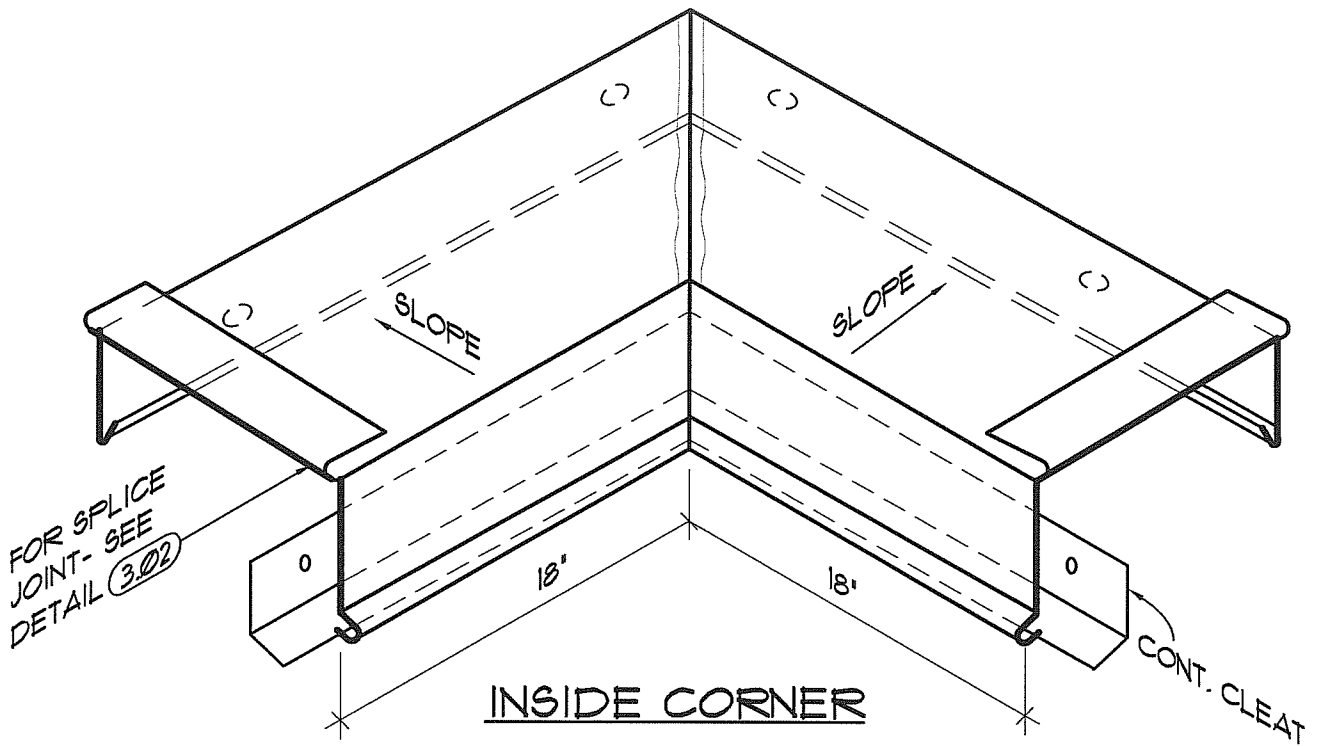
**A/R/C Associates Incorporated**

601 NORTH FERN CREEK AVENUE SUITE 100  
 ORLANDO, FLORIDA 32803-4899  
 TEL. (407)896-7875 FAX (407)898-6043

TITLE TYP. COPING CAP SPLICE JOINT & COVER DETAIL

SCALE N.T.S.





**NOTES:**

1. SOLDER/WELD (AS PER METAL TYPE)  
ALL LAPS & CORNER INSERTS TO  
FORM ONE CONTINUOUS PIECE
2. DIMENSIONS NOT GIVEN TO BE FIELD VERIFIED



**A/R/C Associates Incorporated**

601 NORTH FERN CREEK AVENUE SUITE 100  
ORLANDO, FLORIDA 32803-4899  
TEL (407)896-7875 FAX (407)898-6043

TITLE TYP. INSIDE/OUTSIDE COPING CAP  
CORNER FABRICATION DETAIL

SCALE 3"=1'-0"



PROJECT NUMBER: 14027.00

ACAD FILE # 14027.00-304

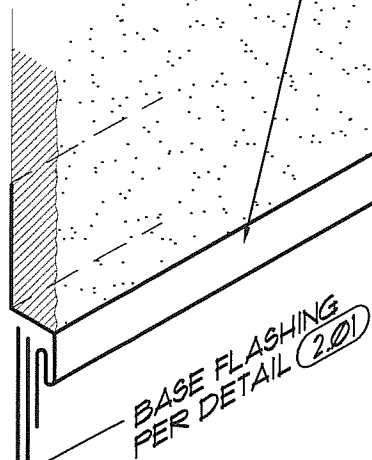
DATE: ..

PLOT SCALE: 3" = 1'-0"

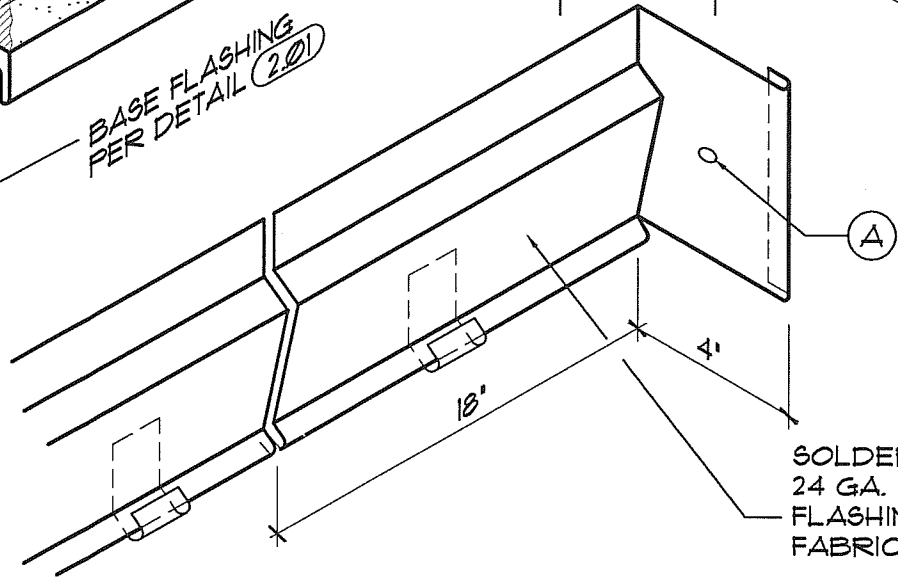
NOTE:  
GRIND STUCCO WALL  
SMOOTH AT COPING  
CAP WALL FLANGE

- A. 1/4" φ x 1 3/4" LG. ST. STL. "TAPCON" SCREWS W/ NEOPRENE WASHERS
- B. 1/2" HEMMED RECEIVER EDGE W/ CONT. SEALANT
- C. SOLDERED ONE-PIECE 24 GA. ST. STL. COPING CAP TERMINATION FABRICATION

CONTINUE ST. STL. STUCCO STOP / C.F. RECEIVER TO PARAPET WALL - ALIGN BOTTOM WITH BOTTOM OF COPING CAP

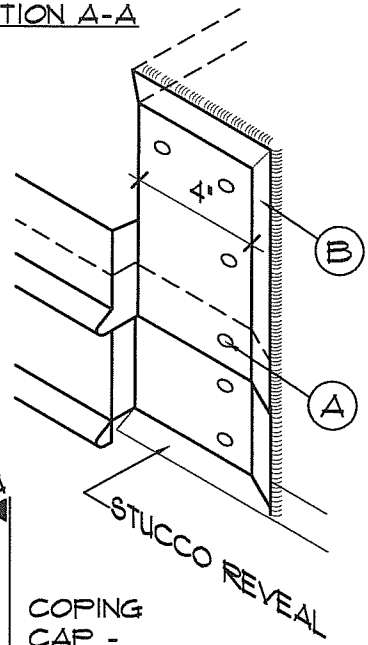


BASE FLASHING PER DETAIL (2.01)



SOLDERED ONE-PIECE 24 GA. ST. STL. COUNTERFLASHING TERMINATION FABRICATION

SECTION A-A



COPING CAP - SEE (3.01)

SPlice JOINT - SEE (3.02)

CONT. CLEAT



**A/R/C Associates Incorporated**  
 601 NORTH FERN CREEK AVENUE SUITE 100  
 ORLANDO, FLORIDA 32803-4899  
 TEL (407)896-7875 FAX (407)898-6043

TITLE COPING AND COUNTERFLASHING TERMINATION DETAIL AT WALL OFFSET  
 SCALE N.T.S.





ACAD FILE # 14021.00-305

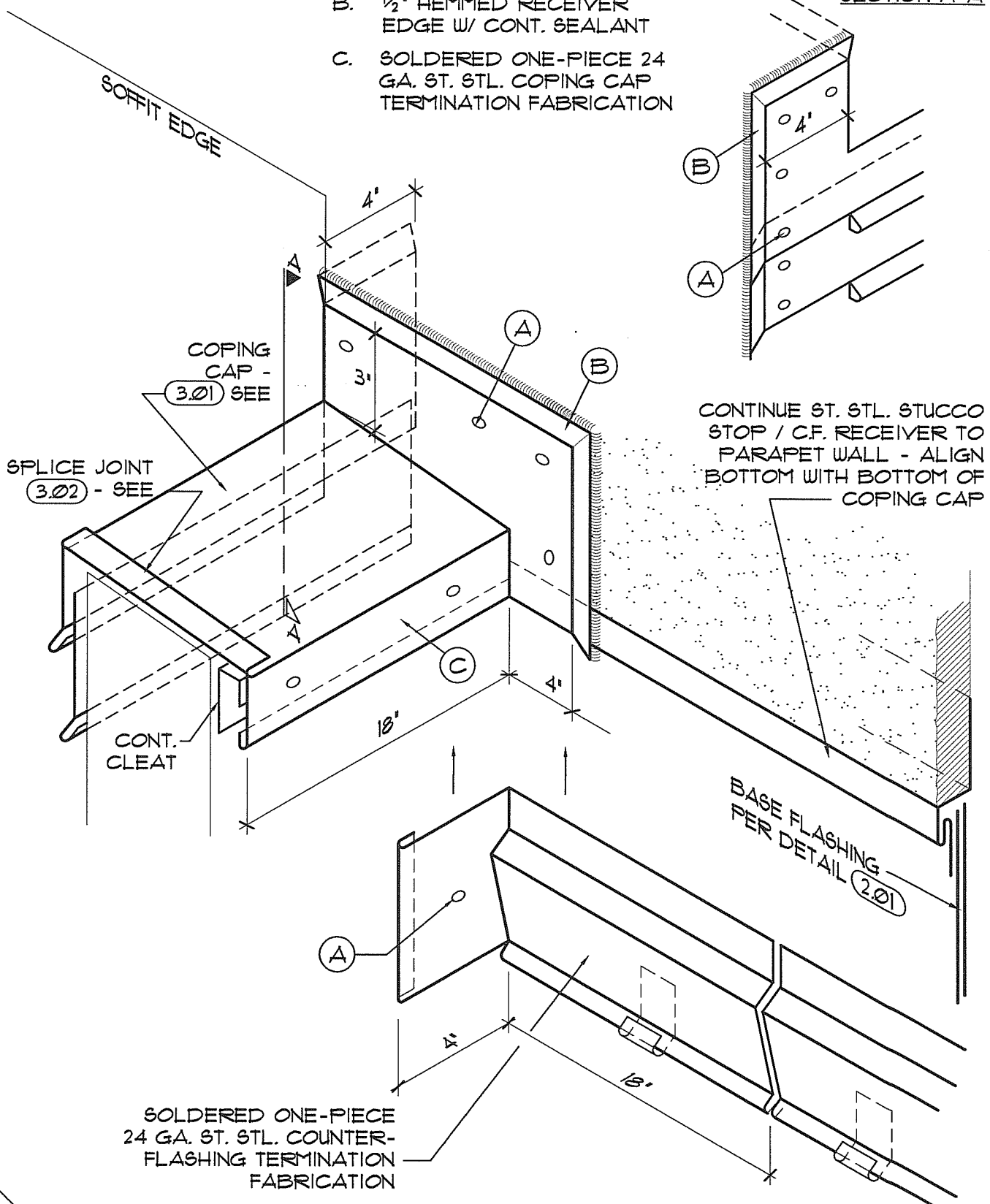
DATE: ..

PLOT SCALE: 3" = 1'-0"

PROJECT NUMBER: 14021.00

NOTE:  
GRIND STUCCO WALL  
SMOOTH AT COPING  
CAP WALL FLANGE

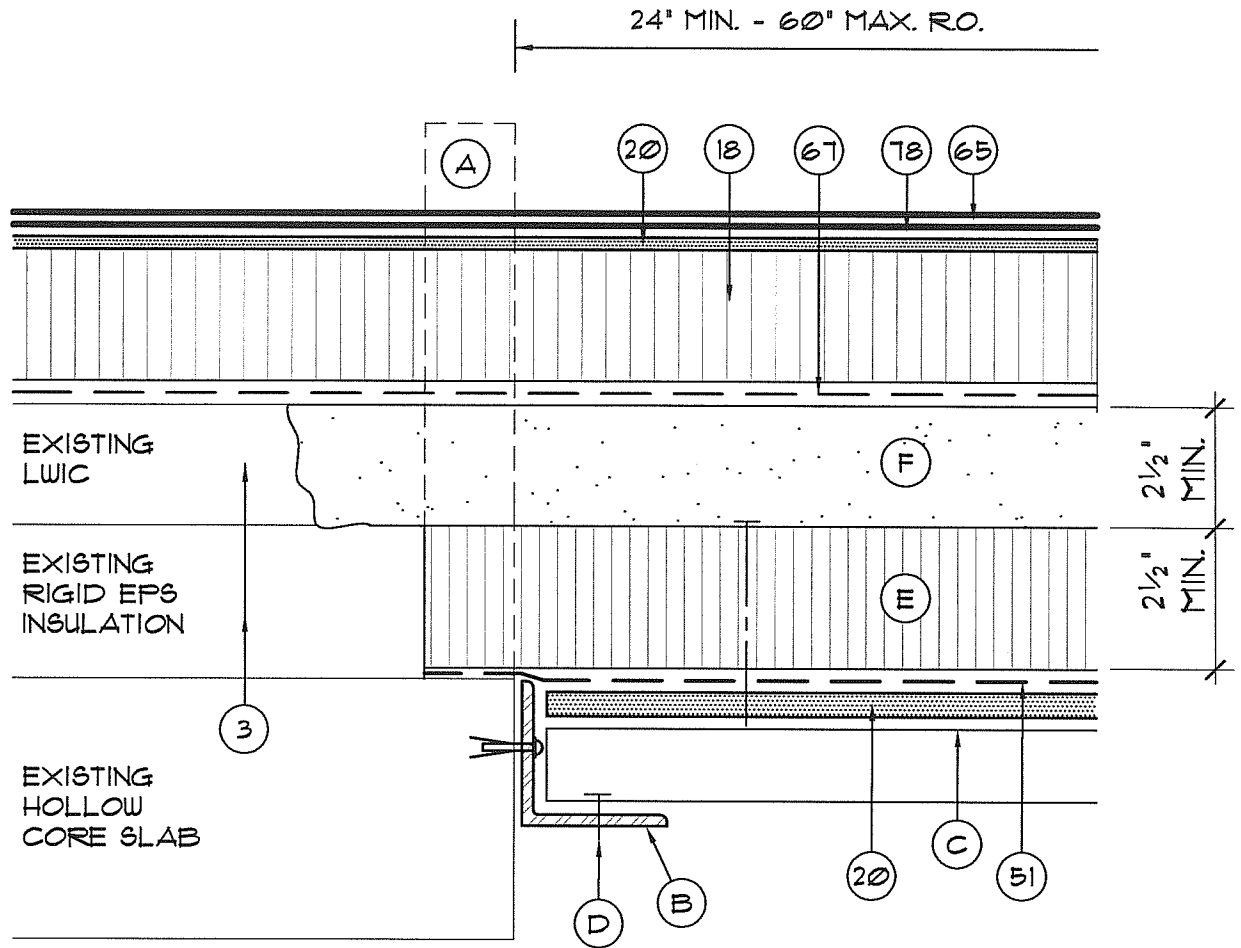
- A. 1/4" φ x 1 3/4" LG. ST. STL. 'TAPCON' SCREWS W/ NEOPRENE WASHERS
- B. 1/2" HEMMED RECEIVER EDGE W/ CONT. SEALANT
- C. SOLDERED ONE-PIECE 24 GA. ST. STL. COPING CAP TERMINATION FABRICATION



**A/R/C Associates Incorporated**  
 601 NORTH FERN CREEK AVENUE SUITE 100  
 ORLANDO, FLORIDA 32803-4899  
 TEL (407)896-7875 FAX (407)898-8043

TITLE COPING AND COUNTERFLASHING  
 TERMINATION DETAIL  
 AT SOFFIT  
SCALE N.T.S.

NO.  
**3.05**



- |   |  |
|---|--|
| <p>3. EXISTING LT. WT. CONC. W/ EPS BOARD ON CONC. DECK</p> <p>18. TAPERED RIGID INSULATION</p> <p>20. GYPSUM ROOF BOARD</p> <p>51. DRY-IN MEMBRANE</p> <p>65. MODIFIED BITUMEN MEMBRANE</p> <p>67. VENTED BASE SHEET</p> <p>78. 2-MOD. BIT INTERPLY SHEETS</p> | <p>A. EXIST. PREFABRICATED ROOF CURB TO BE REMOVED TO CONCRETE DECK</p> <p>B. CONT. 3'X3' 12 GA. GALV. STL. ANGLE - ANCHOR TO CONC. DECK W/ 1/2"φX2 3/4" RAWL-BOLT @ 16" O.C. (2 MIN. PER SIDE)</p> <p>C. 1 1/2"-22 GA FLUTED GALV. METAL DECK</p> <p>D. ST. STL. MTL. SCREWS @ 6" O.C. AT PERIMETER</p> <p>E. 5" MIN. THICKNESS EPS 'HOLEY BOARD' RIGID INSULATION SECURE TO METAL DECK BELOW W/ #12φ SCREWS &amp; 3" 'FM' DISKS @ 1.5 SF/FASTENER</p> <p>F. POUR NEW LIGHTWEIGHT CONCRETE (BAG MIX) OVER NEW INSULATION BOARD &amp; SCREED FLUSH W/ EXISTING</p> |
|---|--|



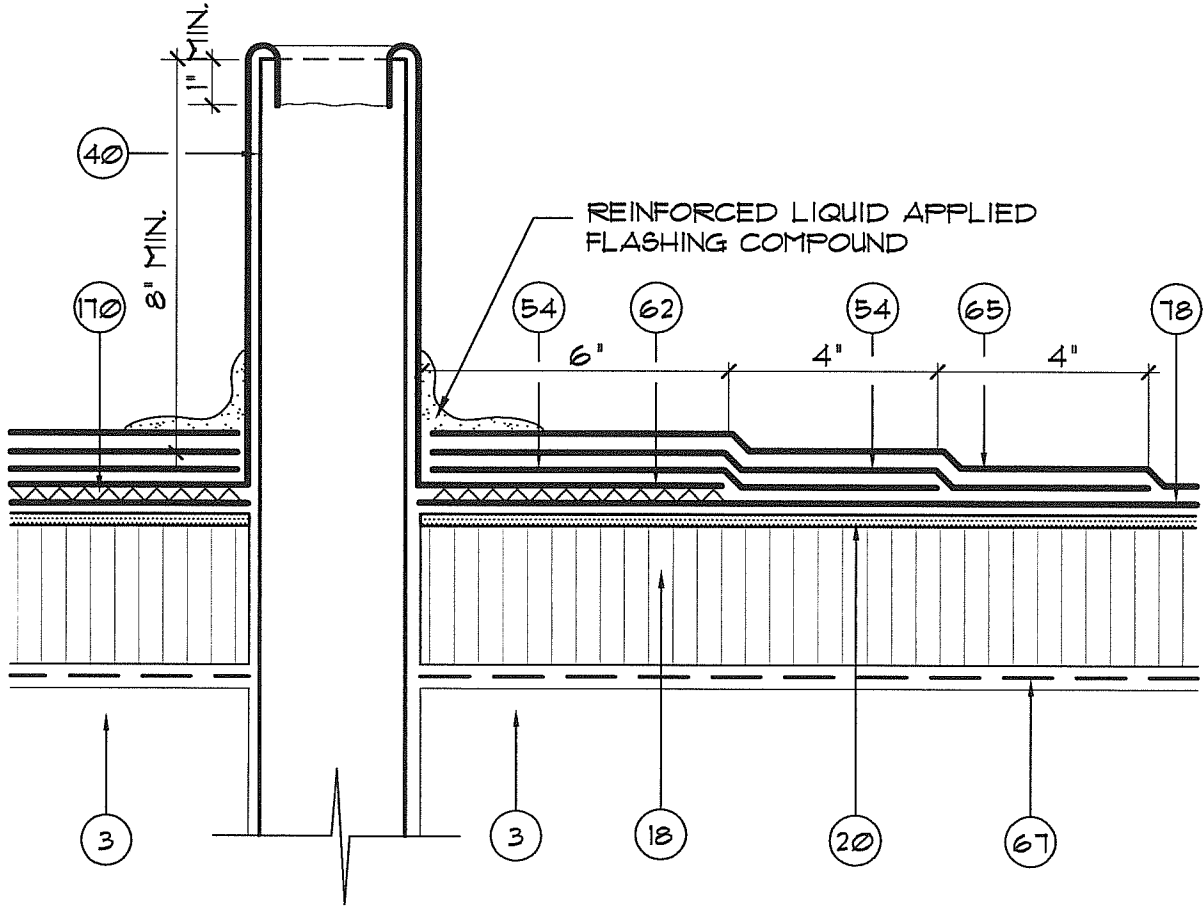
**A/R/C Associates Incorporated**

601 NORTH FERN CREEK AVENUE SUITE 100  
 ORLANDO, FLORIDA 32803-4899  
 TEL (407)896-7875 FAX (407)898-6043

TITLE CONCRETE DECK INFILL AT EXISTING ROOF OPENING

SCALE N.T.S.





- |  |  |
|--|--|
| <ul style="list-style-type: none"> <li>3. EXIST. LT. WT. CONC. OVER PRECAST SLAB</li> <li>18. TAPERED RIGID INSULATION</li> <li>20. GYPSUM ROOF BOARD</li> <li>40. EXIST. VENT STACK EXTENSION</li> <li>54. MOD. BIT. STRIP-IN FLASHING</li> <li>62. LEAD BOOT (4# SQ FT)</li> </ul> | <ul style="list-style-type: none"> <li>65. MODIFIED BITUMEN CAP SHEET</li> <li>67. VENTED BASE SHEET</li> <li>78. 2-MOD. BIT. INTERPLY SHEETS</li> <li>170. APPROVED MANUFACTURER'S TROWELABLE MODIFIED BITUMEN ADHESIVE.</li> </ul> |
|--|--|



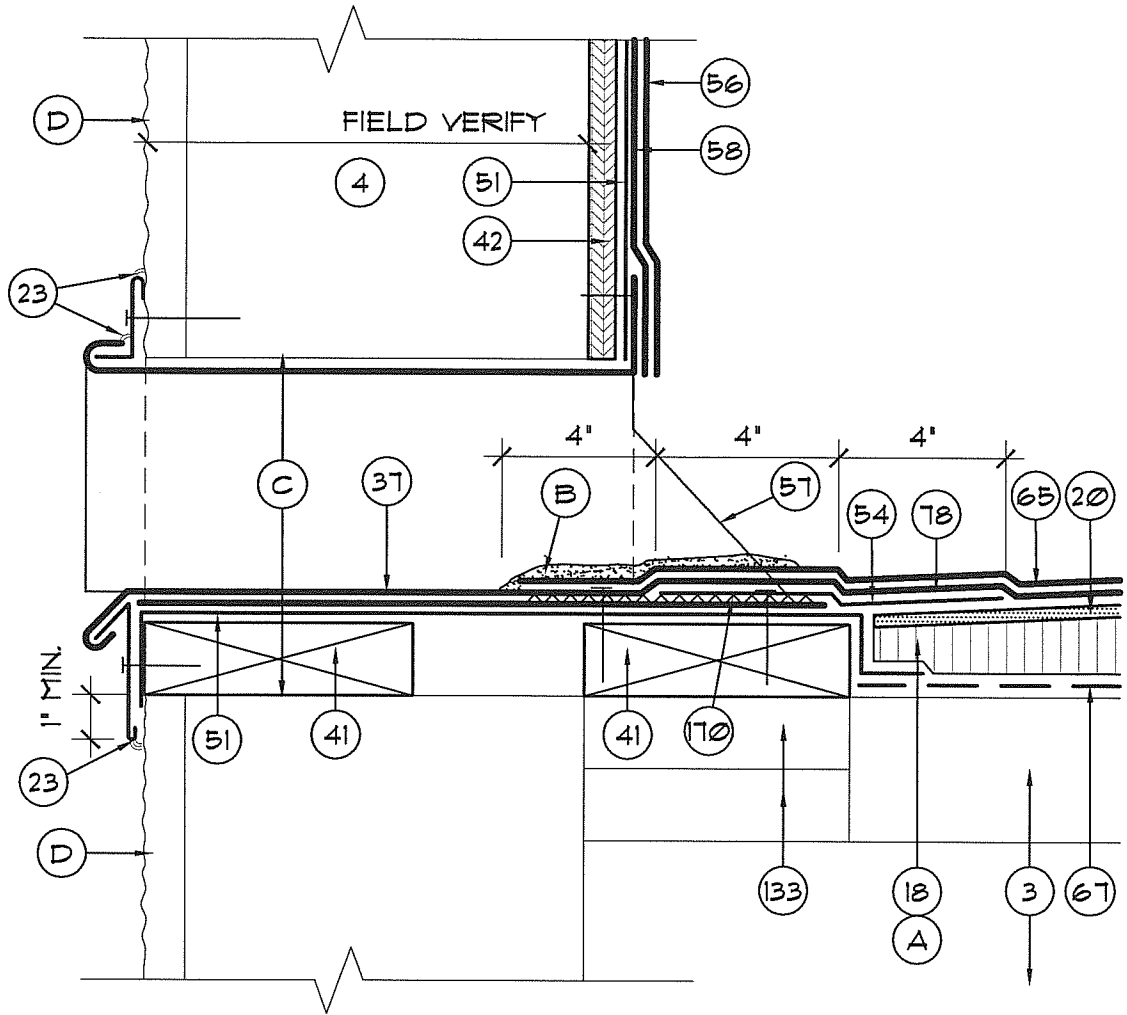
**A/R/C Associates Incorporated**

601 NORTH FERN CREEK AVENUE SUITE 100  
 ORLANDO, FLORIDA 32803-4899  
 TEL (407)896-7875 FAX (407)898-6043

TITLE TYP. VENT PIPE FLASHING  
 AT DECK

SCALE N.T.S.





- |   |   |
|---|---|
| <ul style="list-style-type: none"> <li>3. EXIST. LT. WT. CONC. OVER PRECAST SLAB</li> <li>4. EXIST. CMU/CONC PARAPET</li> <li>18. NON-TAPERED RIGID INSULATION</li> <li>20. GYPSUM ROOF BOARD</li> <li>23. SEALANT</li> <li>37. SCUPPER - SEE DETAIL (T03)</li> <li>41. 2 x 6 P.T. WOOD BLOCKING TO BE FASTENED AT 12" O.C. (MAX.) AND STAGGER - COUNTERSINK HEADS</li> <li>42. 5/8" PLYWOOD - SCREW FASTEN @ 8" O.C. (MAX.) TOP &amp; BOTTOM &amp; STAGGER - COUNTERSINK HEADS</li> <li>51. DRY-IN MEMBRANE</li> <li>54. MOD. BIT. STRIP-IN FLASHING</li> <li>56. MOD. BIT. FLASHING - CAP</li> <li>57. NON-COMBUSTIBLE CANT-BEYOND</li> </ul> | <ul style="list-style-type: none"> <li>58. MOD. BIT. FLASHING - INTERPLY</li> <li>65. MODIFIED BITUMEN CAP SHEET</li> <li>67. VENTED BASE SHEET</li> <li>78. 2-MOD. BIT. INTERPLY SHEETS</li> <li>133. EXIST. WOOD BLK'G TO REMAIN, REPLACE WHERE DAMAGED OR DETERIORATED</li> <li>170. APPROVED MANUFACTURER'S TROWELABLE MODIFIED BITUMEN ADHESIVE.</li> <li>A. 3/4" FT TAPERED INSULATION AT SUMP AT SCUPPER</li> <li>B. REINFORCED LIQUID APPLIED FLASHING COMPOUND</li> <li>C. ENLARGE WALL OPENING AS REQ'D.</li> <li>D. EXISTING STUCCO OVER METAL LATH SURFACING</li> </ul> |
|---|---|



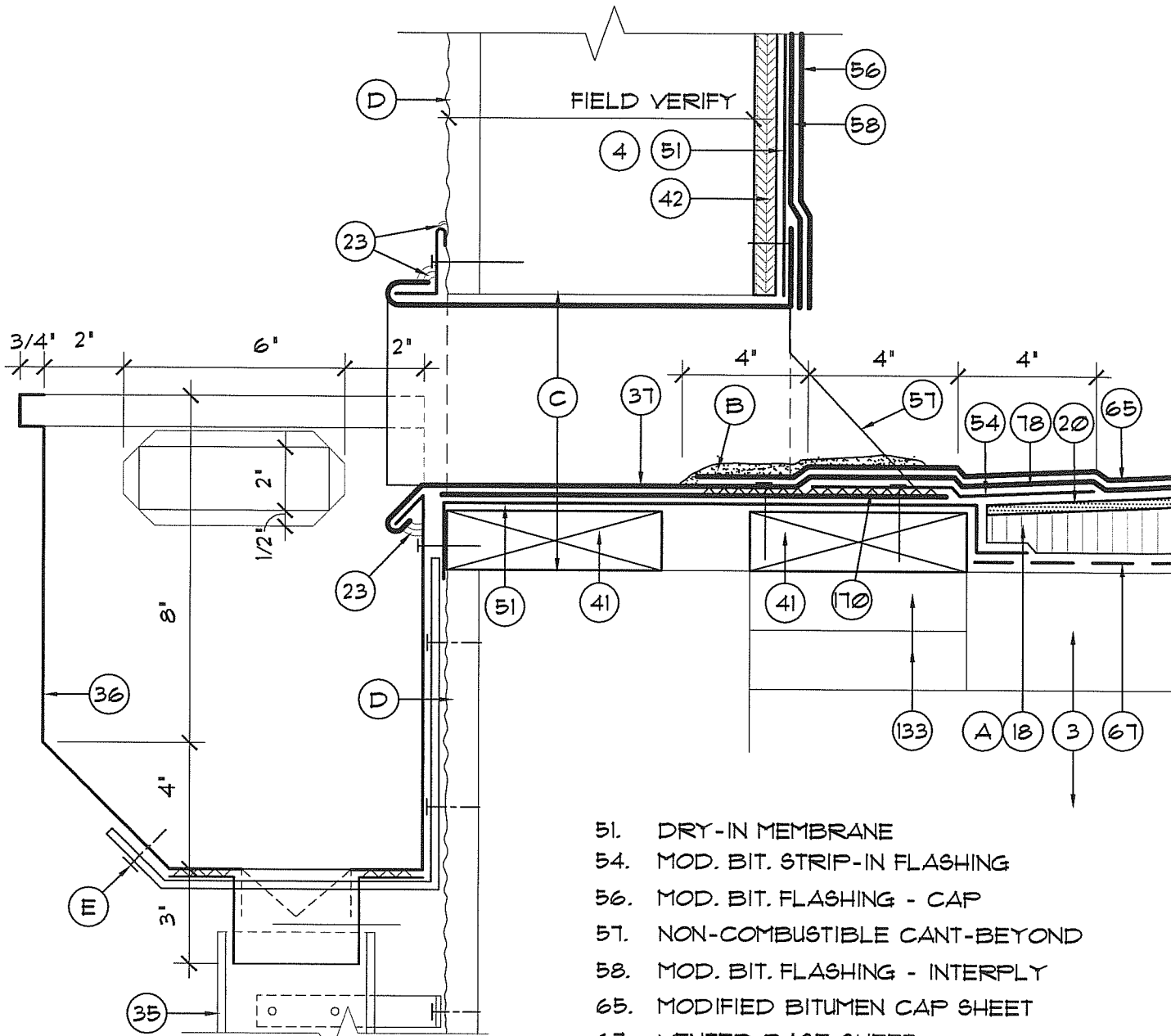
**A/R/C Associates Incorporated**

601 NORTH FERN CREEK AVENUE SUITE 100  
 ORLANDO, FLORIDA 32803-4899  
 TEL (407)896-7875 FAX (407)898-6043

TITLE THRU-WALL PRIMARY SCUPPER  
 & FLASHING DETAIL

SCALE 3"=1'





- 3. EXIST. LT. WT. CONC. OVER PRECAST SLAB
- 4. EXIST. CMU/CONC PARAPET
- 18. NON-TAPERED RIGID INSULATION
- 20. GYPSUM ROOF BOARD
- 23. SEALANT
- 35. DOWNSPOUT - SEE DETAIL (7.05)
- 36. CONDUCTORHEAD - SEE DETAIL (7.04)
- 37. SCUPPER - SEE DETAIL (7.03)
- 41. 2 x 6 P.T. WOOD BLOCKING TO BE FASTENED AT 12" O.C. (MAX.) AND STAGGER - COUNTERSINK HEADS
- 42. 5/8" PLYWOOD - SCREW FASTEN @ 8" O.C. (MAX.) TOP & BOTTOM & STAGGER - COUNTERSINK HEADS
- 51. DRY-IN MEMBRANE
- 54. MOD. BIT. STRIP-IN FLASHING
- 56. MOD. BIT. FLASHING - CAP
- 57. NON-COMBUSTIBLE CANT-BEYOND
- 58. MOD. BIT. FLASHING - INTERPLY
- 65. MODIFIED BITUMEN CAP SHEET
- 67. VENTED BASE SHEET
- 78. 2-MOD. BIT. INTERPLY SHEETS
- 133. EXIST. WOOD BLK'G TO REMAIN, REPLACE WHERE DAMAGED OR DETERIORATED
- 170. APPROVED MANUFACTURER'S TROWELABLE MODIFIED BITUMEN ADHESIVE.
- A. 3/4" FT TAPERED INSULATION AT SUMP AT SCUPPER
- B. REINFORCED LIQUID APPLIED FLASHING COMPOUND
- C. ENLARGE WALL OPENING AS REQ'D.
- D. EXISTING STUCCO OVER METAL LATH SURFACING
- E. EXPOSED FASTENER W/ SEALANT

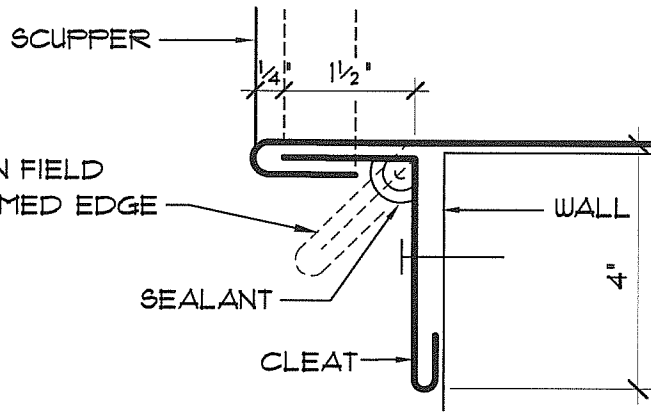


**A/R/C Associates Incorporated**  
 601 NORTH FERN CREEK AVENUE SUITE 100  
 ORLANDO, FLORIDA 32803-4899  
 TEL (407)896-7875 FAX (407)898-6043

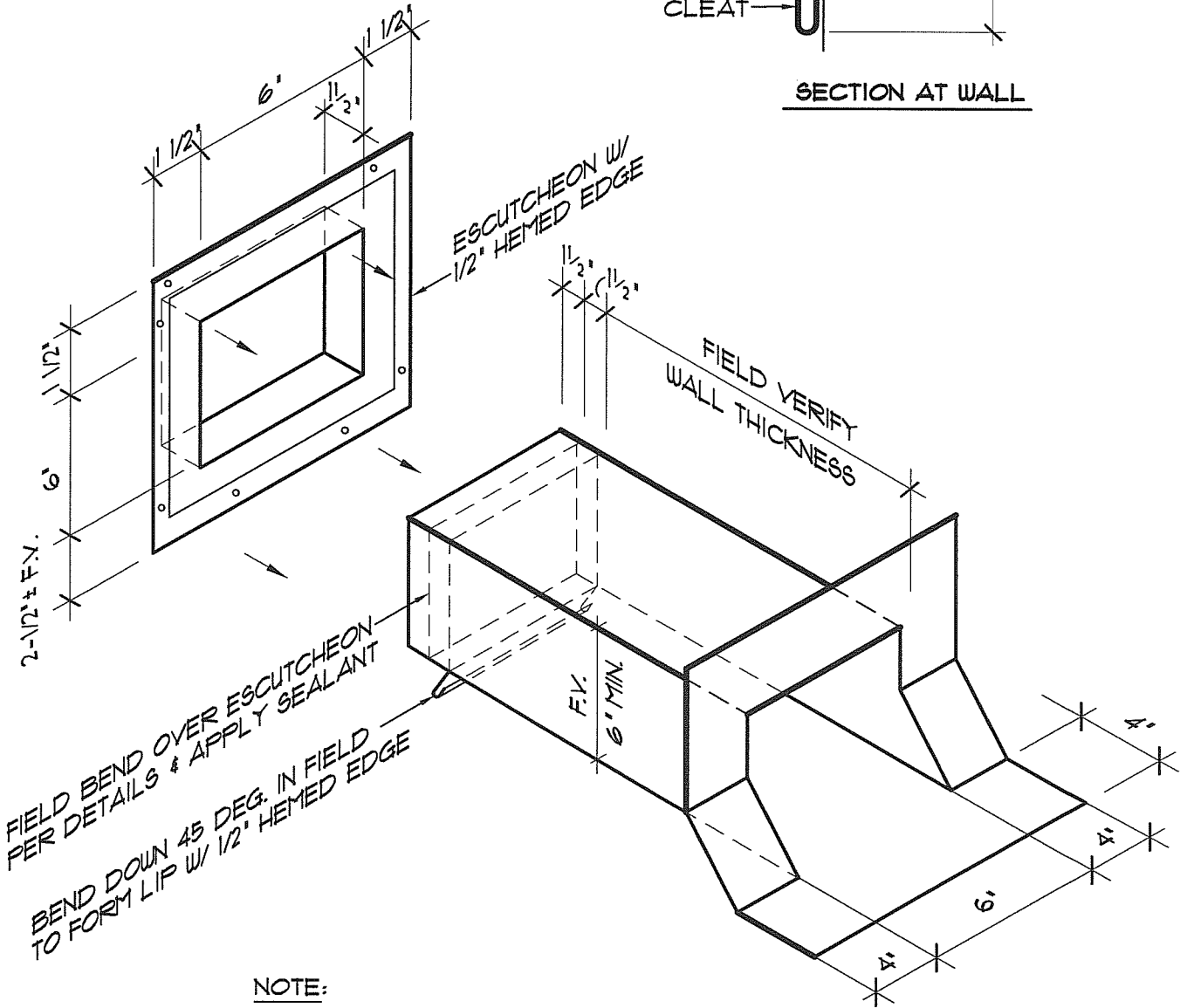
TITLE THRU-WALL PRIMARY SCUPPER WITH CONDUCTOR HEAD FLASHING DETAIL

SCALE 3" = 1'





SECTION AT WALL



FIELD BEND OVER ESCUTCHEON PER DETAILS & APPLY SEALANT

BEND DOWN 45 DEG. IN FIELD TO FORM LIP W/ 1/2" HEMMED EDGE

NOTE:

1. SOLDER/WELD (AS PER METAL TYPE) ALL LAPS & CORNER INSERTS TO FORM ONE CONTINUOUS PIECE
2. DIMENSIONS NOT GIVEN TO BE FIELD VERIFIED.
3. SLEEVE TO BE ON THE OUTSIDE OF SCUPPER



**A/R/C Associates Incorporated**  
 601 NORTH FERN CREEK AVENUE SUITE 100  
 ORLANDO, FLORIDA 32803-4899  
 TEL (407)896-7875 FAX (407)898-6043

TITLE TYP. PRIMARY SCUPPER FABRICATION DETAIL

SCALE 3" = 1'-0"



ACAD FILE # 1402100-104

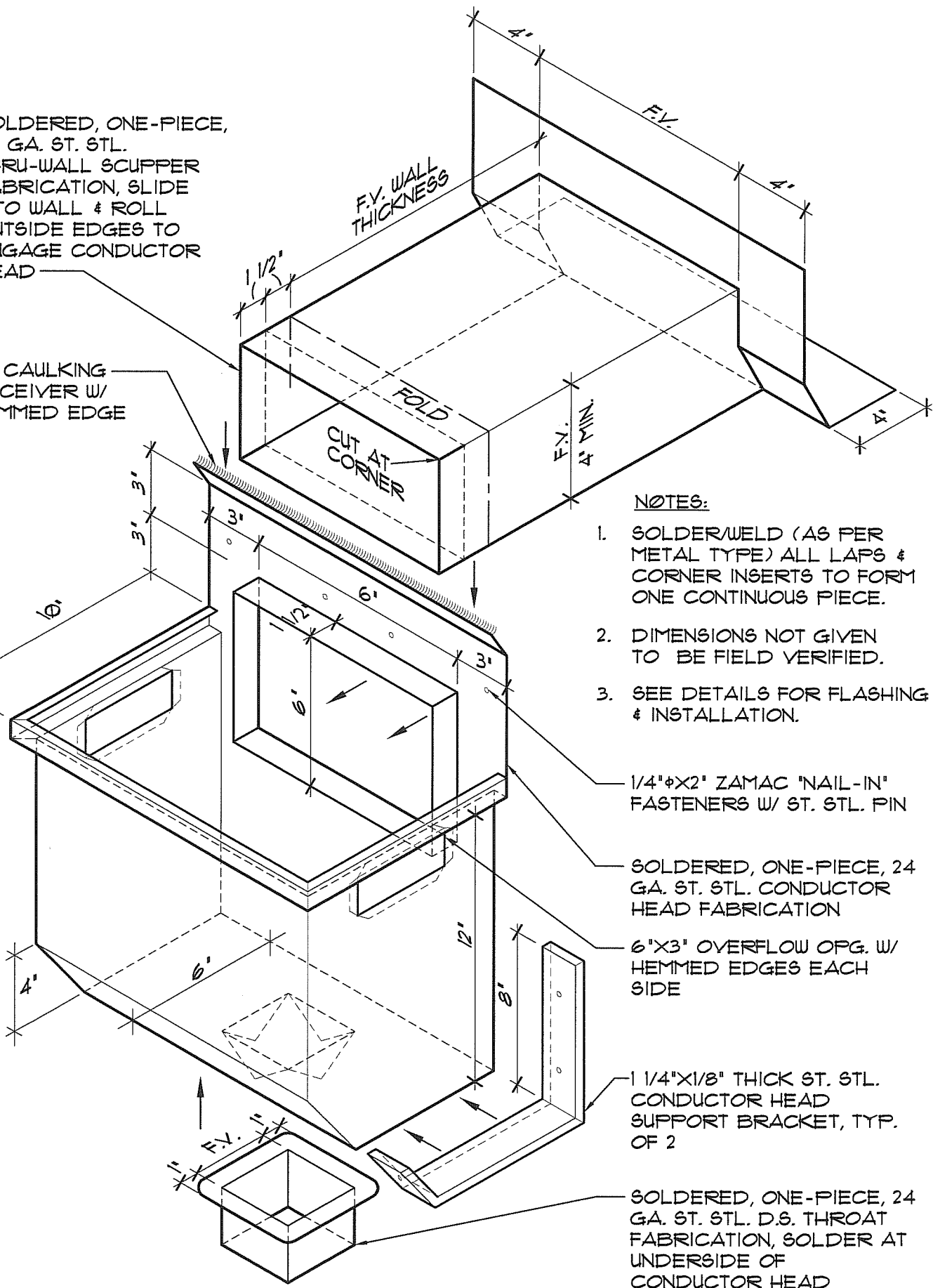
DATE: ..

PLOT SCALE : 3" = 1'-0"

PROJECT NUMBER: 1402100

SOLDERED, ONE-PIECE,  
24 GA. ST. STL.  
THRU-WALL SCUPPER  
FABRICATION, SLIDE  
INTO WALL & ROLL  
OUTSIDE EDGES TO  
ENGAGE CONDUCTOR  
HEAD

1/2" CAULKING  
RECEIVER W/  
HEMMED EDGE



**NOTES:**

1. SOLDER/WELD (AS PER METAL TYPE) ALL LAPS & CORNER INSERTS TO FORM ONE CONTINUOUS PIECE.
2. DIMENSIONS NOT GIVEN TO BE FIELD VERIFIED.
3. SEE DETAILS FOR FLASHING & INSTALLATION.

1/4"φX2" ZAMAC "NAIL-IN"  
FASTENERS W/ ST. STL. PIN

SOLDERED, ONE-PIECE, 24  
GA. ST. STL. CONDUCTOR  
HEAD FABRICATION

6"X3" OVERFLOW OPG. W/  
HEMMED EDGES EACH  
SIDE

1 1/4"X1/8" THICK ST. STL.  
CONDUCTOR HEAD  
SUPPORT BRACKET, TYP.  
OF 2

SOLDERED, ONE-PIECE, 24  
GA. ST. STL. D.S. THROAT  
FABRICATION, SOLDER AT  
UNDERSIDE OF  
CONDUCTOR HEAD



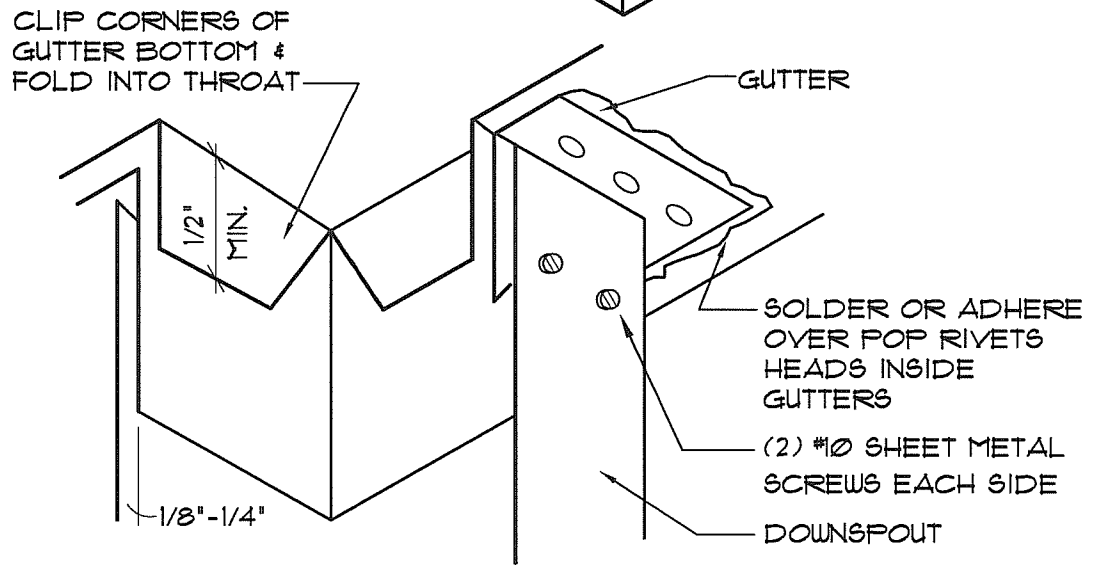
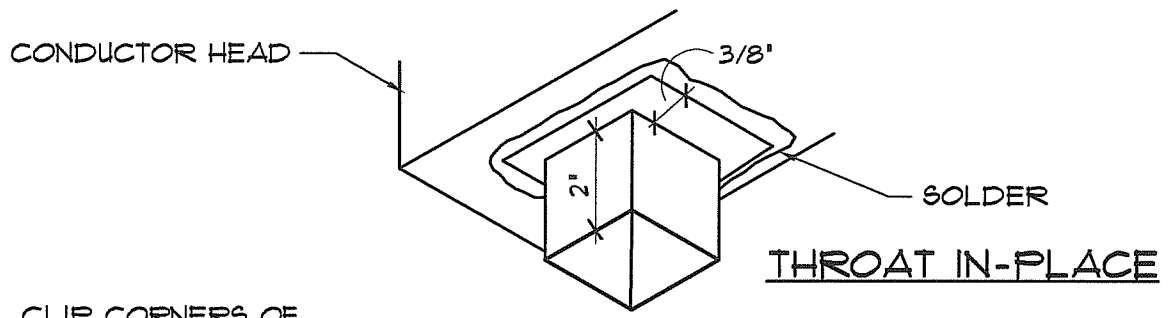
**A/R/C Associates Incorporated**

601 NORTH FERN CREEK AVENUE SUITE 100  
ORLANDO, FLORIDA 32803-4899  
TEL. (407)896-7875 FAX (407)896-6043

TITLE SCUPPER & LEADERHEAD  
FABRICATIONS

SCALE N.T.S.





**D.S. CONNECTION DETAIL**

- 2 MECHANICAL FASTENERS
- 1/4" ZAMAC DRIVE PINS
- EXISTING STRUCTURE
- BRACKETS - 3 MINIMUM
- 1/8" X 1" STAINLESS STEEL

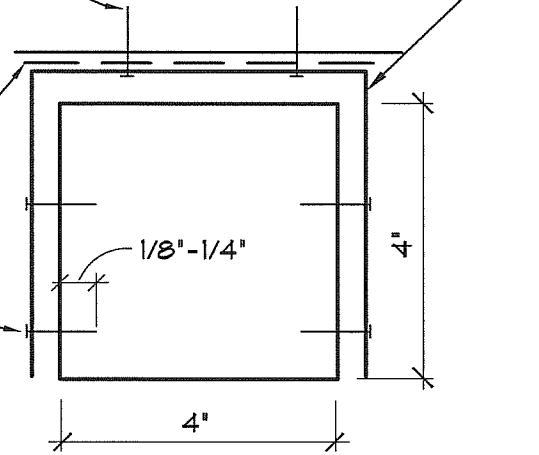
**NOTES:**

1. HELIARC OR ADHERE ALL LAPS & CORNER INSERT TO FORM ONE CONTINUOUS PIECE

2. DIMENSIONS NOT GIVEN TO BE FIELD VERIFIED

- FLASHING TAPE
- #10 SHEET METAL SCREWS (2) EACH SIDE.
- EPOXY FILL SCREW SLOTS
- @ TWO LOWEST BRACKETS

INSTALL BRACKETS 12" FROM TOP & BOTTOM OF DOWNSPOUT & 4'-0" MAX. IN BETWEEN- TYP.



**D.S. BRACKET SECTION**

NOTE : VERIFY QUANTITY AND LOCATION OF DOWNSPOUTS TO MEET JOB SITE CONDITIONS.



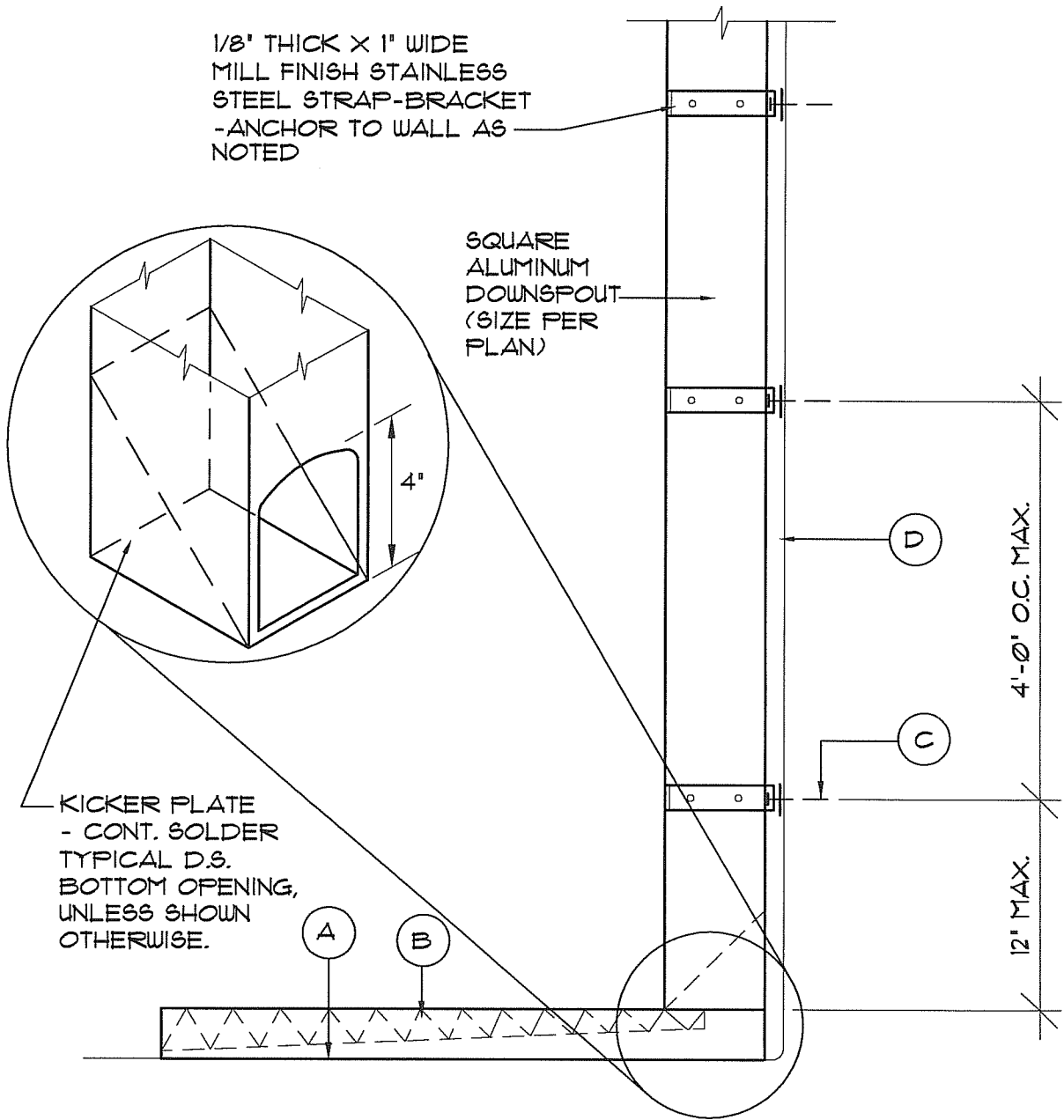
**A/R/C Associates Incorporated**  
 601 NORTH FERN CREEK AVENUE SUITE 100  
 ORLANDO, FLORIDA 32803-4899  
 TEL (407)896-7875 FAX (407)898-6043

TITLE DOWNSPOUT/ GUTTER CONNECTION DETAIL

SCALE N.T.S.







1/8" THICK X 1" WIDE  
MILL FINISH STAINLESS  
STEEL STRAP-BRACKET  
-ANCHOR TO WALL AS  
NOTED

SQUARE  
ALUMINUM  
DOWNSPOUT  
(SIZE PER  
PLAN)

KICKER PLATE  
- CONT. SOLDER  
TYPICAL D.S.  
BOTTOM OPENING,  
UNLESS SHOWN  
OTHERWISE.

- A. EXISTING PAVEMENT OR GRASS
- B. CONCRETE SPLASH BLOCK - SEE  
DETAIL (101)
- C. 1/4" X 2-1/2" ZAMAC DRIVE PINS (TWO  
TYPICAL).
- D. EXISTING COLUMN OR WALL SURFACE

- NOTES:
1. SOLDER/WELD (AS PER METAL  
TYPE) ALL LAPS & CORNER  
INSERTS TO FORM ONE  
CONTINUOUS PIECE
  2. DIMENSIONS NOT GIVEN  
TO BE FIELD VERIFIED



**A/R/C Associates Incorporated**  
601 NORTH FERN CREEK AVENUE SUITE 100  
ORLANDO, FLORIDA 32803-4899  
TEL (407)896-7875 FAX (407)898-6043

TITLE **DOWNSPOUT & KICKER  
PLATE DETAIL**  
  
SCALE **N.T.S.**

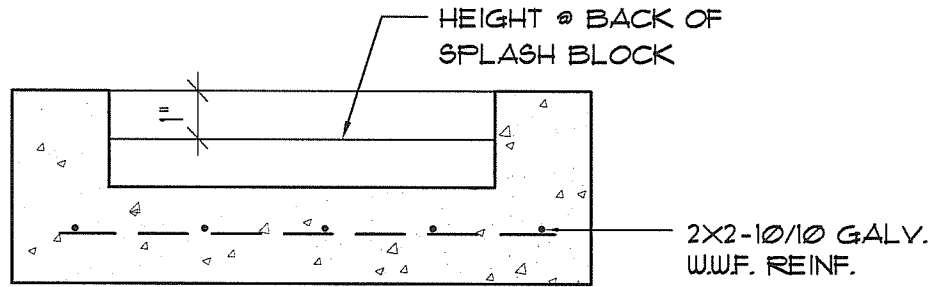
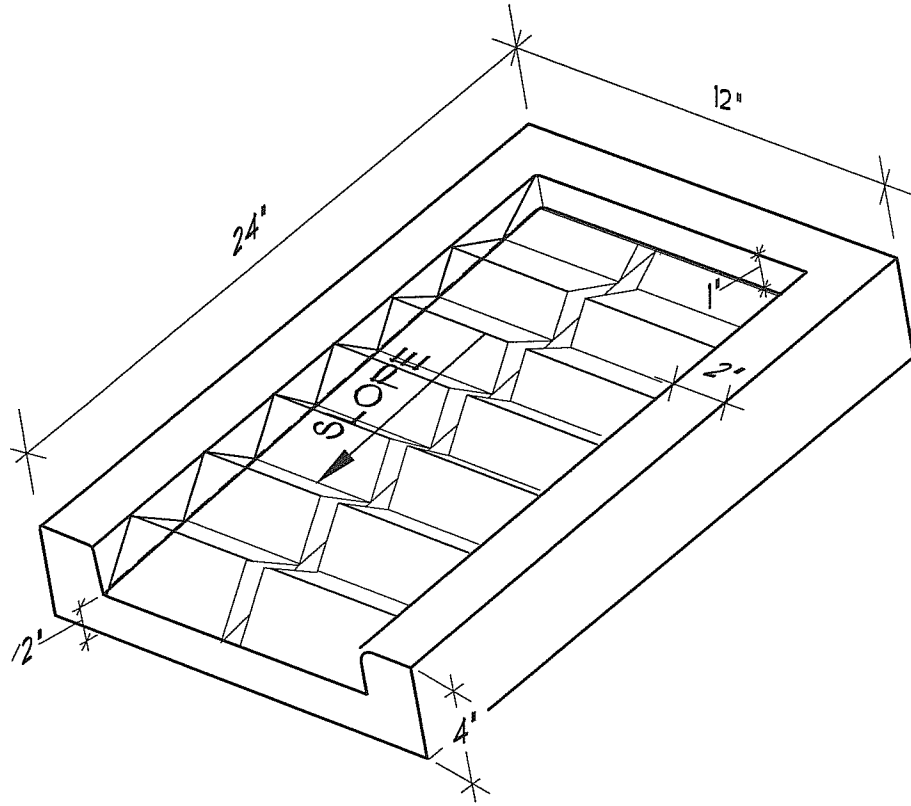


ACAD FILE # 1402100-107

DATE:

PLOT SCALE : 3" = 1'-0"

PROJECT NUMBER: 1402100



NOTE: BLOCK SHALL BE SOLID CONCRETE-  
 SET BLOCK ON SOLID, LEVEL GROUND  
 SET ONE SPLASH BLOCK AT EACH  
 DOWNSPOUT LOCATION UNLESS OTHERWISE  
 INDICATED ON THE PLANS.

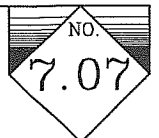


**A/R/C Associates Incorporated**

601 NORTH FERN CREEK AVENUE SUITE 100  
 ORLANDO, FLORIDA 32803-4899  
 TEL (407)896-7875 FAX (407)898-6043

TITLE **CONC. SPLASH BLOCK**

SCALE **N.T.S.**

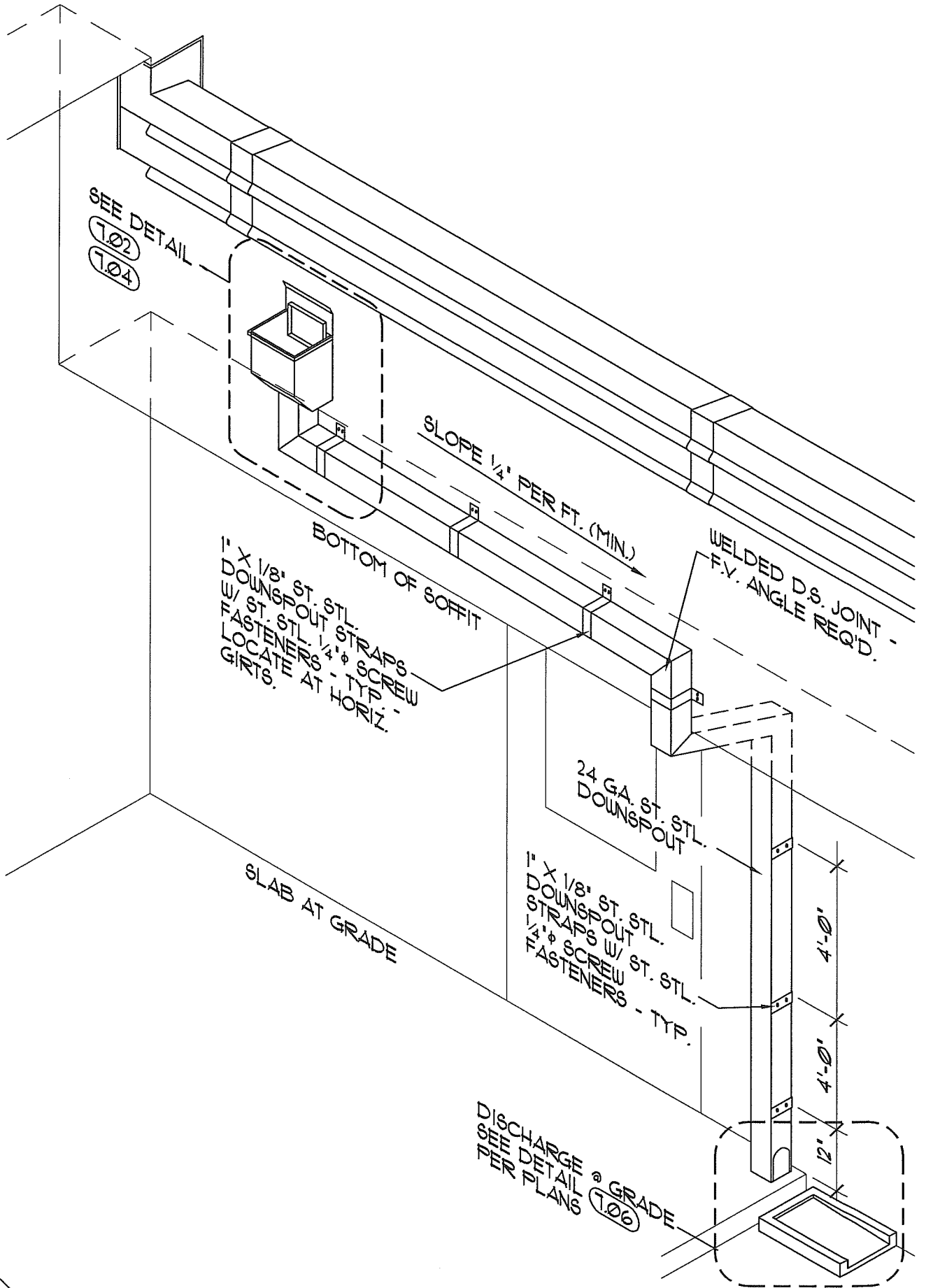


ACAD FILE # 1402100-108

DATE:

PLOT SCALE: 3" = 1'-0"

PROJECT NUMBER: 1402100

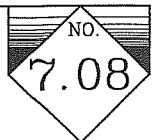


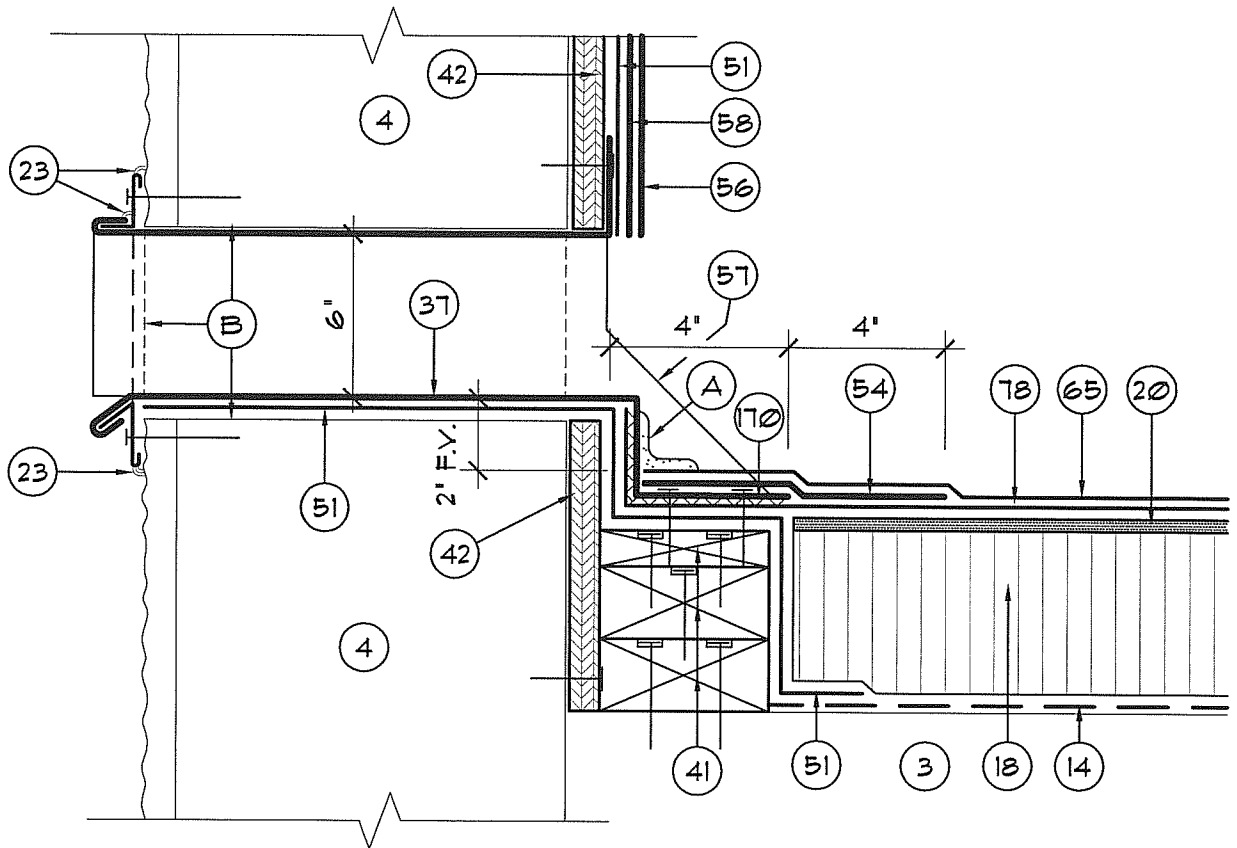
**A/R/C Associates Incorporated**

601 NORTH FERN CREEK AVENUE SUITE 100  
ORLANDO, FLORIDA 32803-4899  
TEL (407)896-7875 FAX (407)898-6043

TITLE CONDUCTOR HEAD AND  
DOWNSPOUT DISCHARGE  
AT ACCESS DOOR

SCALE N.T.S.





- |   |  |
|---|--|
| <ul style="list-style-type: none"> <li>3. EXIST. LT. WT. CONC. OVER PRECAST SLAB</li> <li>4. EXIST. PARAPET BLOCKWALL</li> <li>18. TAPERED RIGID INSULATION</li> <li>20. GYPSUM ROOF BOARD</li> <li>23. SEALANT</li> <li>37. OVERFLOW SCUPPER FABRICATION -SEE DETAIL (7.10)</li> <li>42. 5/8" PLYWOOD - SCREW FASTEN @ 8" O.C. (MAX.) TOP &amp; BOTTOM &amp; STAGGER - COUNTERSINK HEADS</li> <li>41. 2 x 4 F.T. WOOD BLOCKING TO BE FASTENED AT 12' O.C. (MAX.) AND STAGGER - COUNTERSINK HEADS</li> <li>51. DRY-IN MEMBRANE</li> </ul> | <ul style="list-style-type: none"> <li>54. MOD. BIT. STRIP-IN FLASHING</li> <li>56. MOD. BIT. FLASHING-INTERPLY</li> <li>57. METAL CANT (BEYOND)</li> <li>58. MOD. BIT. FLASHING-INTERPLY</li> <li>65. MODIFIED BITUMEN CAP SHEET</li> <li>67. VENTED BASE SHEET</li> <li>78. 2-MOD. BIT. INTERPLY SHEETS</li> <li>170. APPROVED MANUFACTURER'S TROWELABLE MODIFIED BITUMEN ADHESIVE.</li> <li>A. REINFORCED LIQUID APPLIED FLASHING COMPOUND TO SEAL JOINTS</li> <li>B. SAW-CUT OPENING THRU EXIST. PARAPET AS INDICATED PER PLANS</li> </ul> |
|---|--|



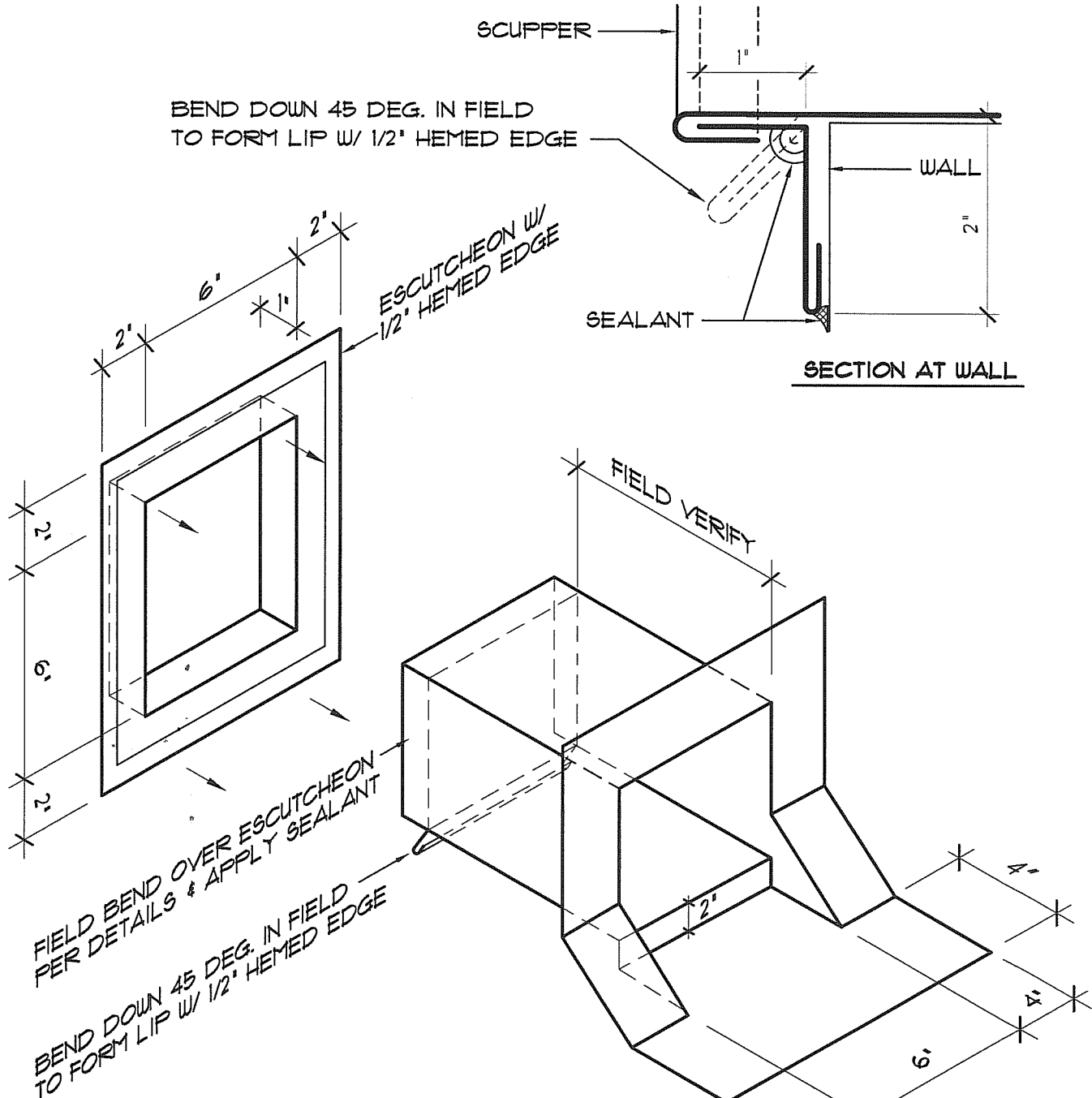
**A/R/C Associates Incorporated**

601 NORTH FERN CREEK AVENUE SUITE 100  
 ORLANDO, FLORIDA 32803-4899  
 TEL (407)896-7875 FAX (407)898-6043

TITLE TYP. OVERFLOW SCUPPER & FLASHING DETAIL

SCALE 3" = 1'-0"





BEND DOWN 45 DEG. IN FIELD  
TO FORM LIP W/ 1/2" HEMED EDGE

ESCUTCHEON W/  
1/2" HEMED EDGE

SECTION AT WALL

FIELD BEND OVER ESCUTCHEON  
PER DETAILS & APPLY SEALANT

BEND DOWN 45 DEG. IN FIELD  
TO FORM LIP W/ 1/2" HEMED EDGE

NOTE:

1. SOLDER/WELD (AS PER METAL TYPE)  
ALL LAPS & CORNER INSERTS  
TO FORM ONE CONTINUOUS PIECE
2. DIMENSIONS NOT GIVEN  
TO BE FIELD VERIFIED.
3. SLEEVE TO BE ON THE OUTSIDE OF SCUPPER



**A/R/C Associates Incorporated**  
 601 NORTH FERN CREEK AVENUE SUITE 100  
 ORLANDO, FLORIDA 32803-4899  
 TEL (407)896-7875 FAX (407)898-6043

TITLE OVERFLOW SCUPPER  
FABRICATION DETAIL

SCALE N.T.S.



ACAD FILE # 14021.00-80

DATE:

PLOT SCALE: 3"=1'

PROJECT NUMBER: 14021.00

# FASTENER SCHEDULE

## A. GENERAL NOTES:

1. THIS SCHEDULE AND THE FASTENING METHODS INDICATED HEREIN ARE INTENDED TO ADDRESS TYPICAL CONDITIONS, AND MAY NOT APPLY TO ALL CONDITIONS FOR THIS PROJECT.
2. CONTRACTOR/INSTALLER MUST ALSO REFER TO THE DETAILS FOR THIS SPECIFIC PROJECT. IN THE CASE OF CONFLICTING DATA, THE PROJECT SPECIFIC DETAILS SHALL GOVERN.
3. FOR ALL CONDITIONS NOT COVERED WITHIN SCHEDULE, REFER TO FASTENER REQUIREMENTS OF THE WRITTEN SPECIFICATIONS ABOVE OR CONSULT WITH OWNER OR ARCHITECT.
4. MANUFACTURER OF ALL SPECIALITY FASTENER SHALL PERFORM FIELD TESTING TO VERIFY WITHDRAWAL VALUES AND FASTENING PATTERNS FOR THE SPECIFIC PROJECT CONDITIONS PRIOR TO INSTALLATION. A WRITTEN REPORT SHALL BE SUBMITTED TO THE OWNER AND ARCHITECT FOR REVIEW AND APPROVAL.
5. ALL FASTENERS SHALL BE STAINLESS STEEL OR HAVE A CORROSION RESISTANT COATING THAT EXCEEDS FM APPROVAL STANDARD 44T0, UNLESS NOTED OTHERWISE

## B. WOOD BLOCKING (2" NOMINAL THICKNESS):

1. CONCRETE:  $\frac{3}{8}$ " $\phi$  SELF-TAPPING MASONRY SCREW AT 16" O.C., MAX., LENGTH AS REQUIRED FOR 1  $\frac{3}{4}$ " MIN. EMBEDMENT. -OR-  $\frac{5}{16}$ " $\phi$  DEFORMED OR FLUTED NAIL AT 12" O.C. MAX., LENGTH AS REQUIRED FOR 1  $\frac{1}{4}$ " MIN. EMBEDMENT. COUNTERSINK HEADS AS REQUIRED.
2. CONCRETE BLOCK (CMU):  $\frac{3}{8}$ " $\phi$  SELF-TAPPING MASONRY SCREWS AT 12" O.C. MAX., LENGTH AS REQUIRED FOR 1  $\frac{3}{4}$ " MIN. EMBEDMENT. -OR-  $\frac{3}{8}$ " $\phi$  HEAVY DUTY SLEEVE STYLE EXPANSION BOLT ANCHOR (RAWL-BOLT) @ 18" O.C., LENGTH AS REQUIRED FOR 2" MIN. EMBEDMENT. COUNTERSINK HEADS AS REQUIRED.
3. BRICK:  $\frac{3}{8}$ " $\phi$  SELF-TAPPING MASONRY SCREWS AT 12" O.C. MAX., LENGTH AS REQUIRED FOR 1  $\frac{3}{4}$ " MIN. EMBEDMENT. -OR-  $\frac{3}{8}$ " $\phi$  HEAVY DUTY SLEEVE STYLE EXPANSION BOLT ANCHOR (RAWL-BOLT) @ 18" O.C., LENGTH AS REQUIRED FOR 2" MIN. EMBEDMENT. COUNTERSINK HEADS AS REQUIRED.
4. STRUCTURAL STEEL:  $\frac{1}{4}$ " $\phi$  SELF-DRILLING, SELF-TAPPING SCREWS WITH "WINGS" @ 16" O.C. MAX., LENGTH AS REQUIRED FOR  $\frac{1}{2}$ " MIN. PENETRATION OF THREADS THROUGH STEEL. COUNTERSINK HEADS AS REQUIRED.
5. METAL DECK:  $\frac{1}{4}$ " $\phi$  SELF-TAPPING "DECK" SCREWS AT 12" O.C. MAX., LENGTH AS REQUIRED FOR  $\frac{1}{2}$ " MIN. PENETRATION THROUGH UNDERSIDE OF DECK. COUNTERSINK HEADS REQUIRED.
6. LIGHT GAGE METAL FRAMING:  $\frac{1}{4}$ " $\phi$  SELF-TAPPING "DECK" SCREWS, 1 MIN. PER FRAMING MEMBER, LENGTH AS REQ'D FOR  $\frac{1}{2}$ " MIN. PENETRATION THROUGH FRAMING. COUNTERSINK HEADS AS REQUIRED.



**A/R/C Associates Incorporated**

601 NORTH FERN CREEK AVENUE SUITE 100  
ORLANDO, FLORIDA 32803-4899  
TEL (407)896-7875 FAX (407)898-6043

TITLE FASTENER SCHEDULE  
(GENERAL NOTES)

SCALE N.T.S.



ACAD FILE # 1402100-802

DATE:

PLOT SCALE : 3"=1'

PROJECT NUMBER: 1402100

# FASTENER SCHEDULE

## B. WOOD BLOCKING (2" NOMINAL THICKNESS):

1. PLYWOOD DECK:  $\frac{1}{4}$ " $\phi$  SELF-TAPPING ST. STL. 'DECK' SCREWS AT 8" O.C. MAX., LENGTH AS REQUIRED FOR  $\frac{1}{2}$ " MIN. PENETRATION THROUGH UNDERSIDE OF DECK COUNTERSINK HEADS AS REQUIRED.
2. WOOD BLOCKING:  $\frac{1}{4}$ " $\phi$  SELF-TAPPING ST. STL. 'DECK' SCREWS AT 16" O.C. MAX., LENGTH AS REQUIRED FOR  $1\frac{1}{2}$ " MIN. EMBEDMENT -OR- TWO CONTINUOUS  $\frac{3}{8}$ " BEADS OF CONSTRUCTION ADHESIVE THE FULL LENGTH OF THE BOARD TO BE APPLIED AND 12d NAILS @ 4" O.C. (IN TWO ROWS-STAGGERED).

## C. PLYWOOD SHEATHING:

1. CONCRETE:  $\frac{1}{4}$ " $\phi$  SELF-TAPPING MASONRY SCREWS AT 12" O.C. MAX. (AT EDGES), AND 16" O.C. MAX. IN THE FIELD, LENGTH AS REQUIRED FOR  $1\frac{1}{2}$ " MIN. EMBEDMENT, -OR-  $\frac{1}{4}$ " $\phi$  RAWL-SPLICE OR OLYMPIC FLUTTED NAIL AT THE SAME SPACING AS NOTED ABOVE, LENGTH AS REQ'D FOR  $1\frac{1}{4}$ " MIN. EMBEDMENT.
2. CONCRETE BLOCK (CMU):  $\frac{1}{4}$ " $\phi$  SELF-TAPPING MASONRY SCREWS AT 12" O.C. MAX. (AT EDGES), AND 16" O.C. MAX. IN THE FIELD, LENGTH AS REQUIRED FOR  $1\frac{1}{2}$ " MIN. EMBEDMENT, -OR-  $\frac{1}{4}$ " $\phi$  RAWL-SPLICE OR OLYMPIC FLUTTED NAIL AT THE SAME SPACING AS NOTED ABOVE, LENGTH AS REQ'D FOR  $1\frac{1}{4}$ " MIN. EMBEDMENT.
3. BRICK:  $\frac{1}{4}$ " $\phi$  SELF-TAPPING MASONRY SCREWS AT 12" O.C. MAX. (AT EDGES), AND 16" O.C. MAX. IN THE FIELD, LENGTH AS REQUIRED FOR  $1\frac{1}{2}$ " MIN. EMBEDMENT, -OR-  $\frac{1}{4}$ " $\phi$  RAWL-SPLICE OR OLYMPIC FLUTTED NAIL AT THE SAME SPACING AS NOTED ABOVE, LENGTH AS REQ'D FOR  $1\frac{1}{4}$ " MIN. EMBEDMENT.
4. STRUCTURAL STEEL: #10 $\phi$  SELF-DRILLING, SELF-TAPPING SCREWS WITH 'WINGS' @ 12" O.C. MAX. (AT EDGES), AND 16" O.C. MAX. IN THE FIELD, LENGTH AS REQUIRED FOR  $\frac{1}{2}$ " MIN. PENETRATION OF THREADS THROUGH STEEL.
5. METAL DECK: #10 $\phi$  SELF-TAPPING 'DECK' SCREWS AT 12" O.C. MAX. (AT EDGES), AND 16" O.C. MAX. IN THE FIELD, LENGTH AS REQUIRED FOR  $\frac{1}{2}$ " MIN. PENETRATION THROUGH UNDERSIDE OF DECK.
6. LIGHT GAGE METAL FRAMING: #10 $\phi$  SELF-TAPPING 'DECK' SCREWS AT 12" O.C. MAX. (AT EDGES), AND 16" O.C. MAX. ALONG EACH FRAMING MEMBER, LENGTH AS REQ'D FOR  $\frac{1}{2}$ " MIN. PENETRATION THROUGH FRAMING. FRAMING TO BE SPACED AT 24" O.C. MAX., UNLESS NOTED OTHERWISE BY DETAILS.
7. WOOD FRAMING: #10 $\phi$  SELF-TAPPING 'DECK' SCREWS AT 12" O.C. MAX. ALONG EACH FRAMING MEMBER, LENGTH AS REQ'D FOR  $1\frac{1}{2}$ " MIN. EMBEDMENT -OR- 8d ANNULAR RING NAILS AT 6" O.C. MAX. (AT EDGES) AND 12" O.C. MAX. IN FIELD. DECREASE SPACING AT EDGES AND RAKE ZONES TO 4" O.C. MAX. AT EDGES, AND 8" O.C. MAX. IN FIELD.



**A/R/C Associates Incorporated**

601 NORTH FERN CREEK AVENUE SUITE 100  
ORLANDO, FLORIDA 32803-4899  
TEL (407)896-7875 FAX (407)898-6043

TITLE FASTENER SCHEDULE  
(GENERAL NOTES)

SCALE N.T.S.



ACAD FILE # 1402100-803

DATE:

PLOT SCALE : 3"=1'

PROJECT NUMBER: 1402100

# FASTENER SCHEDULE

## D. METAL DECK:

INSTALL AND SECURE PER STEEL JOIST INSTITUTE (SJI) GUIDELINES, SEE SPECIFICATIONS OR STRUCTURAL DETAILS FOR ADDITIONAL INFORMATION.

## E. MINOR STRUCTURAL STEEL:

1. ANCHORAGE OF LOAD BEARING STEEL ANF LARGE STEEL FABRICATIONS, (SUCH AS LADDERS), IS TO BE AS DEFINED BY THE STRUCTURAL ENGINEERING DRAWINGS, OR AS ENGINEERED BY THE SUPPLIER MINOR STRUCTURAL STEEL WOULD BE CONSIDERED ITEMS SUCH AS SUPPORT STANDS, WALL LEDGER ANGLES, ETC.
2. CONCRETE:  $\frac{3}{8}$ " $\phi$  HEAVY-DUTY, SLEEVE STYLE EXPANSION BOLT ANCHOR (RAWL-BOLT) @ 16" O.C., LENGTH AS REQ'D FOR 2" MIN. EMBEDMENT.
3. CONCRETE BLOCK (CMU):  $\frac{3}{8}$ " $\phi$  HEAVY-DUTY, SLEEVE STYLE EXPANSION BOLT ANCHOR (RAWL-BOLT) @ 16" O.C., LENGTH AS REQ'D FOR 2" MIN. EMBEDMENT. IF CMU IS HOLLOW, BREAK INTO BLOCK ABOVE, AND FILL CELL OF BLOCK TO RECEIVE ANCHOR SOLID, PERFORM ANY REPAIR AND PATCHING NECESSARY
4. BRICK:  $\frac{3}{8}$ " $\phi$  HEAVY-DUTY, SLEEVE STYLE EXPANSION BOLT ANCHOR (RAWL-BOLT) @ 16" O.C., LENGTH AS REQ'D FOR 2" MIN. EMBEDMENT.
5. STRUCTURAL STEEL:  $\frac{1}{4}$ " $\phi$  SELF-DRILLING, SELF-TAPPING SCREW @ 16" O.C., LENGTH AS REQUIRED FOR  $\frac{1}{2}$ " MIN. PENETRATION OF THREADS THROUGH STEEL.

## F. RIGID INSULATION BOARD:

1. INSTALL AND SECURE PER THE MANUFACTURE'S RECOMMENDATIONS, TESTING AND APPROVALS TO COMPLY WITH THE DESIGN REQUIREMENTS OF THIS PROJECT. SEE PROJECT SPECIFICATIONS AND FASTENING DETAIL FOR ADDITIONAL INFORMATION.

## G. ROOF MEMBRANE SYSTEM:

1. INSTALL AND SECURE PER THE MANUFACTURE'S RECOMMENDATIONS, TESTING AND APPROVALS TO COMPLY WITH THE DESIGN REQUIREMENTS OF THIS PROJECT. SEE PROJECT SPECIFICATIONS AND FASTENING DETAIL FOR ADDITIONAL INFORMATION.

## H. FLANGED SHEETMETAL (EDGE METAL)

1. WOOD BLOCKING: #12 GAGE x  $1\frac{1}{2}$ " ANNULAR RING STAINLESS STEEL ROOFING NAILS AT 4' O.C. MAX., STAGGERED IN 2 ROWS AT  $\frac{3}{4}$ " $\pm$  FROM EDGES OF FLANGE.
2. LIGHTGAGE METAL: #12 $\phi$  SELF TAPPING, STAINLESS STEEL, FLAT OR WAFER HEAD SCREWS AT 12" O.C. MAX.
3. CONCRETE:  $\frac{1}{4}$ " $\phi$  x  $1\frac{1}{2}$ " ZAMAC 'NAIL-IN' DRIVE PIN, EXPANSION TYPE FASTENER @ 12" O.C., MAX. WITH STAINLESS STEEL DRIVE PIN.



**A/R/C Associates Incorporated**

601 NORTH FERN CREEK AVENUE SUITE 100  
ORLANDO, FLORIDA 32803-4899  
TEL (407)896-7875 FAX (407)898-6043

TITLE FASTENER SCHEDULE  
(GENERAL NOTES)

SCALE N.T.S.





ACAD FILE # 14021.00-804

DATE:

PLOT SCALE : 3"=1'

PROJECT NUMBER: 14021.00

# FASTENER SCHEDULE

## I. CLEATS FOR SHEETMETAL:

1. WOOD BLOCKING: #12 GAGE x 1½" ANNULAR RING STAINLESS STEEL ROOFING NAILS AT 8' O.C. MAX., (4' O.C. AT CORNER ZONES OF ROOF)
2. LIGHTGAGE METAL: #12φ SELF TAPPING, STAINLESS STEEL, FLAT OR WAFER HEAD SCREWS AT 12' O.C. MAX.
3. CONCRETE: ¼"φ x 1½" ZAMAC "NAIL-IN" DRIVE PIN, EXPANSION TYPE FASTENER @ 12' O.C., MAX. WITH STAINLESS STEEL DRIVE PIN.
4. CONCRETE BLOCK: ¼"φ x 1½" ZAMAC "NAIL-IN" DRIVE PIN, EXPANSION TYPE FASTENER @ 12' O.C., MAX. WITH STAINLESS STEEL DRIVE PIN.
5. BRICK: ¼"φ x 1½" ZAMAC "NAIL-IN" DRIVE PIN, EXPANSION TYPE FASTENER @ 12' O.C., MAX. WITH STAINLESS STEEL DRIVE PIN.

## J. APPLIED SHEETMETAL (COUNTERFLASHING, TERMINATION BAR, ETC.):

1. WOOD BLOCKING: 12"φ SELF-TAPPING, STAINLESS STEEL SCREWS AT 8' O.C. MAX., LENGTH AS REQ'D FOR ¼" MIN. EMBEDMENT INTO WOOD. IF EXPOSED TO THE WEATHER PROVIDE METAL BACKED NEOPRENE SEALING WASHERS OR USE 'SCOTS' TYPE SCREW WITH INTEGRAL SEALING WASHER.
2. SHEETMETAL BACKING: 12"φ SELF-TAPPING STAINLESS STEEL SCREWS AT 8' O.C. MAX., LENGTH AS REQ'D FOR ½" MIN. PENETRATION OF THREADS THROUGH STEEL. IF EXPOSED TO THE WEATHER PROVIDE METAL BACKED NEOPRENE SEALING WASHERS OR USE 'SCOTS' TYPE SCREW WITH INTEGRAL SEALING WASHER.
3. CONCRETE: ¼"φ SELF-TAPPING STAINLESS STEEL MASONRY SCREWS AT 8' O.C. MAX. LENGTH AS REQUIRED FOR ¼" MIN. EMBEDMENT. -OR- ¼"φ x 1½" ZAMAC "NAILIN" DRIVE PIN, EXPANSION TYPE FASTENERS @ 8' O.C. MAX., WITH STAINLESS STEEL DRIVE PIN. IF EXPOSED TO THE WEATHER PROVIDE METAL BACKED NEOPRENE SEALING WASHERS-INCREASE LENGTH IF REQ'D BY OVERLYING FINISH FOR ¼" MIN. EMBEDMENT INTO CONCRETE (BLOCK)
4. CONCRETE BLOCK: ¼"φ SELF-TAPPING STAINLESS STEEL MASONRY SCREWS AT 8' O.C. MAX. LENGTH AS REQUIRED FOR ¼" MIN. EMBEDMENT. -OR- ¼"φ x 1½" ZAMAC "NAILIN" DRIVE PIN, EXPANSION TYPE FASTENERS @ 8' O.C. MAX., WITH STAINLESS STEEL DRIVE PIN. IF EXPOSED TO THE WEATHER PROVIDE METAL BACKED NEOPRENE SEALING WASHERS- INCREASE LENGTH IF REQ'D BY OVERLYING FINISH FOR ¼" MIN. EMBEDMENT INTO CONCRETE (BLOCK)
5. BRICK: ¼"φ SELF-TAPPING STAINLESS STEEL MASONRY SCREWS AT 8' O.C. MAX. LENGTH AS REQUIRED FOR ¼" MIN. EMBEDMENT. -OR- ¼"φ x 1½" ZAMAC "NAILIN" DRIVE PIN, EXPANSION TYPE FASTENERS @ 8' O.C. MAX., WITH STAINLESS STEEL DRIVE PIN. IF EXPOSED TO THE WEATHER PROVIDE METAL BACKED NEOPRENE SEALING WASHERS



**A/R/C Associates Incorporated**

601 NORTH FERN CREEK AVENUE SUITE 100  
ORLANDO, FLORIDA 32803-4899  
TEL (407)896-7875 FAX (407)898-6043

TITLE FASTENER SCHEDULE  
(GENERAL NOTES)

SCALE N.T.S.



ACAD FILE # 14021.00-805

DATE:

PLOT SCALE : 3" = 1'-0"

PROJECT NUMBER: 14021.00

# ABBREVIATIONS

ADJ	ADAJACENT	E	EAST
A/C	AIR CONDITIONING	ELEC	ELECTRIC(AL)
ALT	ALTERNATE	EL	ELEVATION
ALUM	ALUMINUM	EQ	EQUAL
ANOD	ANODIZED	EQUIP	EQUIPMENT
APPROX	APPROXIMATE	EXH	EXHAUST
ARCH	ARCHITECT(URAL)	EXIST	EXISTING
		EXP	EXPANSION
BRG	BEARING	EXT	EXTERIOR
BIT	BITUMEINOUS		
BLK	BLOCK	FIN	FINISH(ED)
BLKG	BLOCKING	FLASH	FLASHING
BD	BOARD	FLEX	FLEXIBLE
BOT	BOTTOM	FTG	FOOTING
BLDG	BUILDING	FDN	FOUNDATION
BUR	BUILT UP ROOFING		
		GA	GAGE (GAUGE)
CB	CATCH BASIN	GALV	GALVANIZED
CLG	CEILING	GWB	GYPSPUM WALL BOARD
COL	COLUMN		
COMP	COMPRESS (ED), (ION), (IBLE)	HDWE	HARDWARE
CONC	CONCRETE	HYAC	HEATING/VENTILATION /AIR CONDITIONING
CMU	CONCRETE MASONRY UNIT		
CONST	CONSTRUCTION	HT	HEIGHT
CONT	CONTINUOUS OR CONTINUE	HM	HOLLOW METAL
CJ	CONTROL JOINT	HORZ	HORIZONTAL
CTR	CENTER		
CF.	CUBIC FOOT	INCL	INCLUDE(D), (ING)
		ID	INSIDE DIAMETER
DEMO	DEMOLISH, DEMOLITION	INSUL	INSULATE(D), (ION)
DET	DETAIL	INT	INTERIOR
DIAG	DIAGONAL		
DIA	DIAMETER	JT	JOINT
DIM	DIMENSION		
DS	DOWNSPOUT		
DWG	DRAWING		

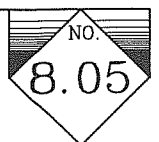


**A/R/C Associates Incorporated**

601 NORTH FERN CREEK AVENUE SUITE 100  
ORLANDO, FLORIDA 32803-4899  
TEL (407)896-7875 FAX (407)898-6043

TITLE STANDARD ABBREVIATIONS

SCALE N.T.S.



ACAD FILE # 1402100-806

DATE:

PLOT SCALE : 3" = 1'-0"

PROJECT NUMBER: 1402100

# ABBREVIATIONS

LG	LONG (LENGTH)	RAD	RADIUS
LW	LIGHTWEIGHT	RWL	RAINWATER LEADER
LLH	LONG LEG HORIZONTAL	REF	REFERENCE
LLV	LONG LEG VERTICAL	RCP	REINFORCED CONCRETE PIPE
MFR	MANUFACTURE(ER)	REV	REVISION
MATL	MATERIAL(S)	RD	ROOF DRAIN
MAX	MAXIMUM	RO	ROUGH OPENING
MECH	MECHANIC(AL)	SCH	SCHEDULE
MTL	METAL	SEAL	SEALANT
MIN	MINIMUM	SHT	SHEET
MISC	MISCELLANEOUS	SIM	SIMILAR
MTD	MOUNTED(ING)	S	SOUTH
NOM	NOMINAL	SPK	SPEAKER
N	NORTH	SPEC	SPECIFICATION(S)
NIC	NOT IN CONTRACT	SQ	SQUARE
NTS	NOT TO SCALE	SF	SQUARE FEET
NO	NUMBER	ST STL	STAINLESS STEEL
OC	ON CENTER(S)	STD	STANDARD
OPG	OPENING	STL	STEEL
OPP	OPPOSITE	STRUCT	STRUCTURAL
OD	OUTSIDE DIAMETER/DIMENSION	THK	THICK(NESS)
PTD	PAINT(ED)	T AND G	TONGUE AND GROOVE
PR	PAIR	TYP	TYPICAL
PL	PLATE	UNO	UNLESS NOTED OTHERWISE
PWD	PLYWOOD	VERT	VERTICAL
PVC	POLYVINYL CHLORIDE	WUF	WELDED WIRE FABRIC
PSF	POUNDS PER SQUARE FOOT	W	WEST
PSI	POUNDS PER SQUARE INCH	WM	WIRE MESH
PC	PRECAST CONCRETE	W/	WITH
PT	PRESSURE TREATED	W/O	WITHOUT
		WD	WOOD



**A/R/C Associates Incorporated**

601 NORTH FERN CREEK AVENUE SUITE 100  
 ORLANDO, FLORIDA 32803-4899  
 TEL (407)896-7875 FAX (407)898-6043

TITLE STANDARD ABBREVIATIONS

SCALE N.T.S.



ACAD FILE # 14021.00-807

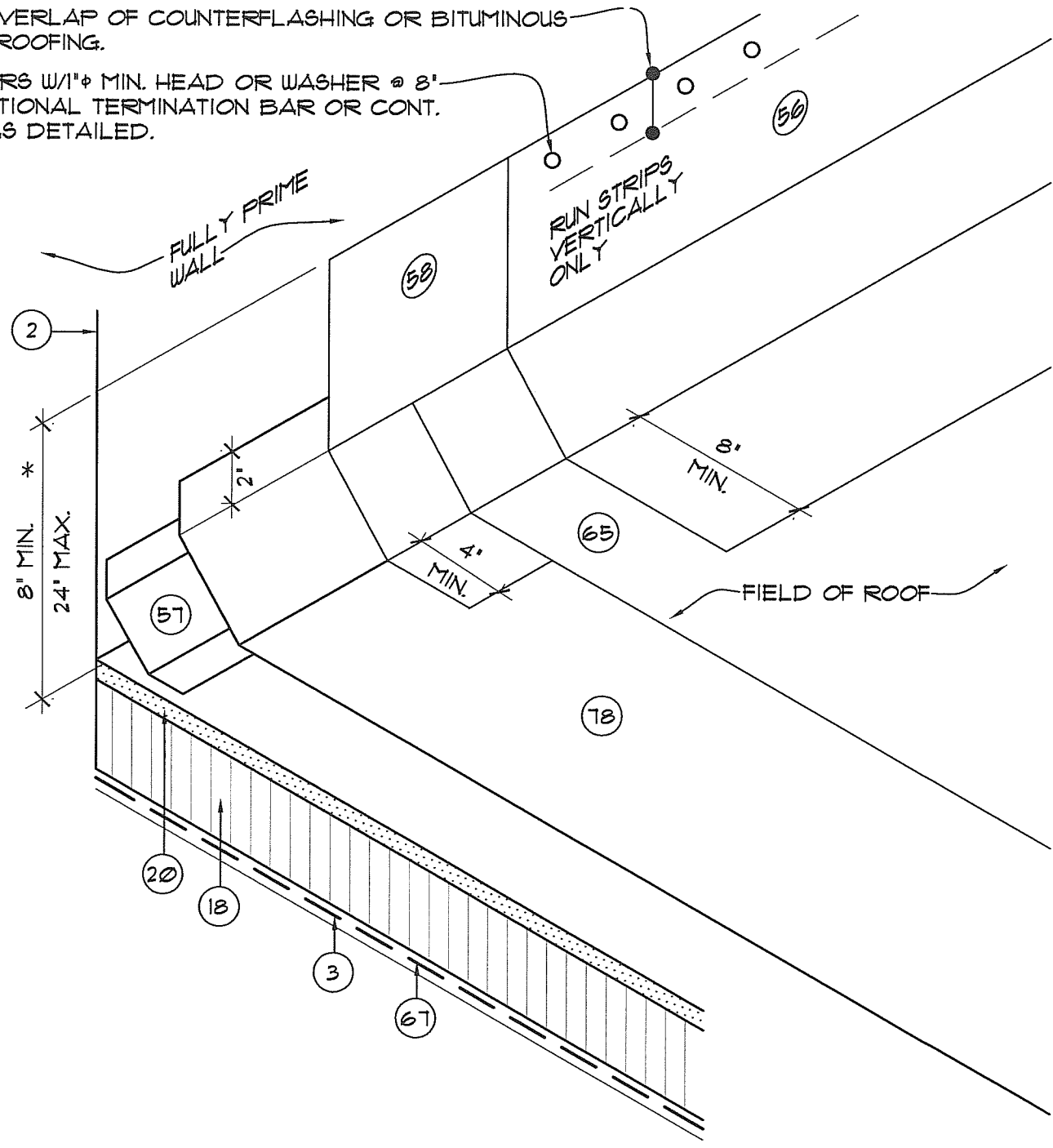
CATALOG #

PLOT SCALE :

PROJECT NUMBER: 14021.00

4" MIN OVERLAP OF COUNTERFLASHING OR BITUMINOUS WATERPROOFING.

FASTENERS W/1"φ MIN. HEAD OR WASHER @ 8' O.C. (OPTIONAL TERMINATION BAR OR CONT. CLEAT AS DETAILED).



- |   |                                   |
|---|-----------------------------------|
| 2. EXISTING WALL  | 57. NON-COMBUSTIBLE METAL CANT    |
| 3. EXIST. LT. WT. CONC. OVER PRECAST SLAB                   | 58. MOD. BIT. FLASHING - INTERPLY |
| 18. TAPERED RIGID INSULATION (NON-TAPERED AT ROOF AREA 1/3) | 65. MODIFIED BITUMEN CAP SHEET    |
| 20. GYPSUM ROOF BOARD                                       | 67. VENTED BASE SHEET             |
| 56. MOD. BIT. FLASHING - CAP                                | 78. 2 - MOD. BIT. INTERPLY SHEETS |

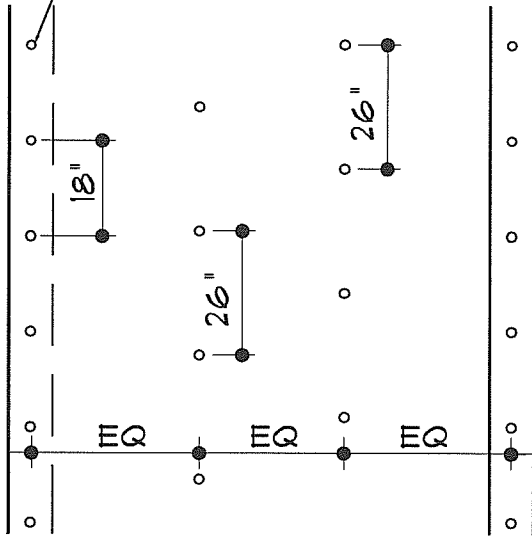


**A/R/C Associates Incorporated**  
 601 NORTH FERN CREEK AVENUE SUITE 100  
 ORLANDO, FLORIDA 32803-4899  
 TEL (407)896-7875 FAX (407)898-6043

TITLE TYP. BASE FLASHING DETAIL  
SCALE N.T.S.



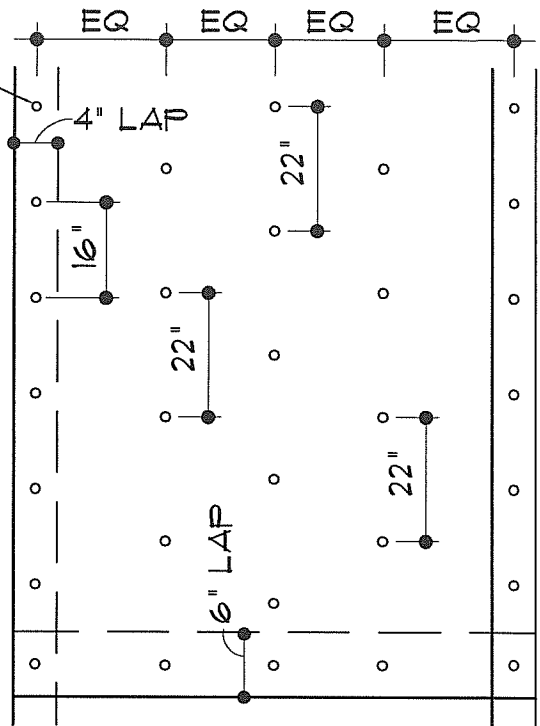
ES FM-90 TYPE BASE SHEET  
FASTENER W/ FM-90 DISCS -  
18" LENGTH. APPLY ASPHALT  
PRIMER TO FASTENER HEADS



52 FASTENERS / SQ.

**FIELD PATTERN**

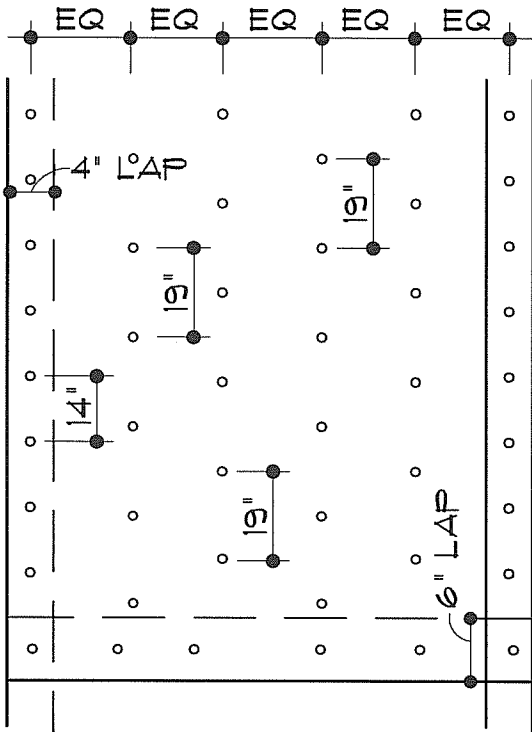
-52 PSF MAX UPLIFT



79 FASTENERS / SQ.

**EDGE PATTERN**

-79 PSF MAX UPLIFT



113 FASTENERS / SQ.

**CORNER PATTERN**

-112 PSF MAX UPLIFT

**GENERAL UPLIFT NOTES:**

1. THE FASTENING PATTERN SHOWN ABOVE IS BASED ON A 36' WIDE ROLL WIDTH FOR THE BASE SHEET. THE PATTERN WILL NEED TO BE ADJUSTED FOR ANY OTHER ROLL WIDTHS.
2. THE FASTENING PATTERN SHOWN ABOVE IS BASED ON A MINIMUM FASTENER WITHDRAWAL RESISTANCE VALUE OF 100 POUNDS PER FASTENER, WHICH IS TO BE CONFIRMED BY FIELD TESTING PER TAS 105 BY THE CONTRACTOR OR THEIR SUPPLIER. THE PATTERN MAY NEED TO BE ADJUSTED FOR OTHER FASTENER WITHDRAWAL VALUES BASED ON ACTUAL FIELD TESTING RESULTS.
3. THE ABOVE FASTENING PATTERN IS NOT PRODUCT SPECIFIC PRIOR TO BIDDING, THE ACTUAL FASTENER PATTERN USED IS TO BE PROVIDED BY THE ROOF MEMBRANE MANUFACTURER AND MUST BE COORDINATED WITH THEIR CURRENT FLORIDA PRODUCT APPROVAL AND INSTALLATION INSTRUCTIONS FOR THE DESIGN PRESSURES & CONDITIONS OF THIS PROJECT.

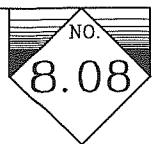


**A/R/C Associates Incorporated**

601 NORTH FERN CREEK AVENUE SUITE 100  
ORLANDO, FLORIDA 32803-4899  
TEL (407)896-7875 FAX (407)898-6043

TITLE MIN. VENTED BASE SHEET  
FASTENING PATTERN AT BID

SCALE 3" = 1'-0"



ACAD FILE # 14027.00-901

DATE: ..

PLOT SCALE: 3" = 1'-0"

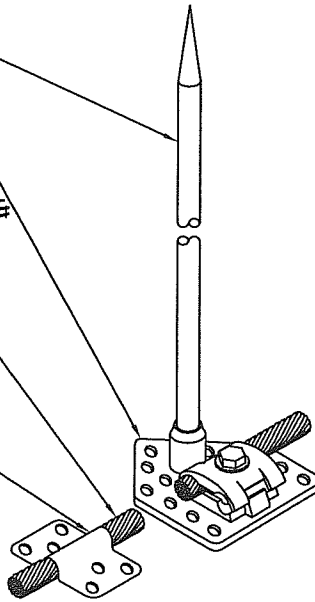
PROJECT NUMBER: 14027.00

1/2" X 12" SOLID  
COPPER AIR TERMINAL

BRONZE FLAT SURFACE  
BASE

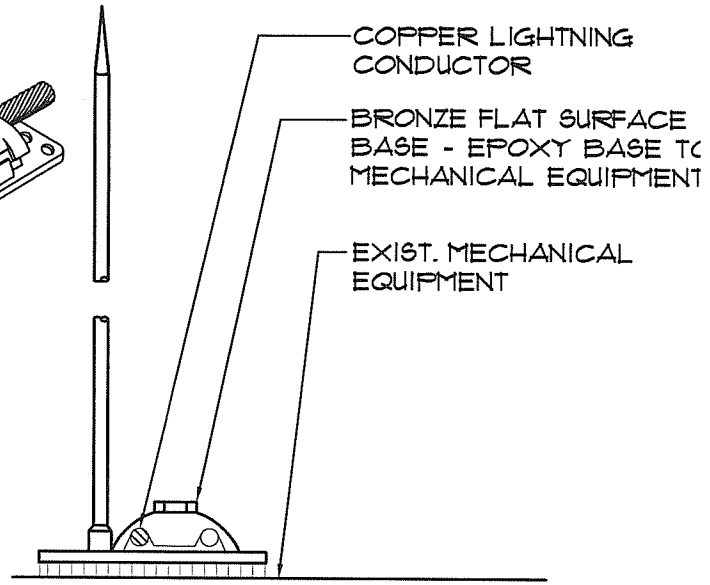
CLASS I COPPER LIGHTNING  
CONDUCTOR (24 STRANDS  
OF 14 AWG WIRES - 98 LBS.  
PER 1000')

COPPER LOOP  
CABLE CLIP WITH  
STAINLESS STEEL  
FASTENER -  
EVERY 3' MAX.



AIR TERMINAL DETAIL "A"

N.T.S.



AIR TERMINAL AT EQUIP.

N.T.S.

1/2" X 12" SOLID  
COPPER AIR TERMINAL

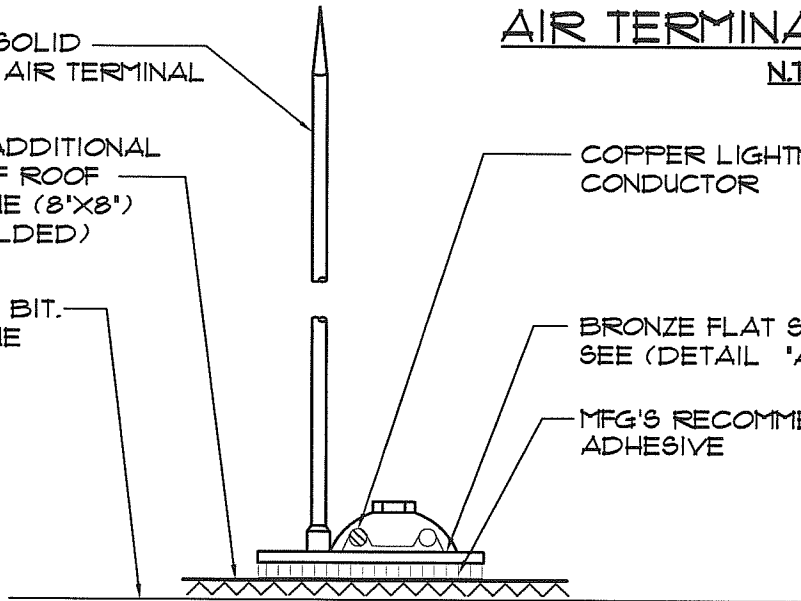
INSTALL ADDITIONAL  
LAYER OF ROOF  
MEMBRANE (8'X8')  
(HEAT WELDED)

NEW MOD. BIT.  
MEMBRANE

COPPER LIGHTNING  
CONDUCTOR

BRONZE FLAT SURFACE BASE  
SEE (DETAIL "A" ABOVE)

MFG'S RECOMMENDED  
ADHESIVE



AIR TERMINAL AT ROOF

N.T.S.



**A/R/C Associates Incorporated**

601 NORTH FERN CREEK AVENUE SUITE 100  
ORLANDO, FLORIDA 32803-4899  
TEL (407)896-7875 FAX (407)898-6043

TITLE LIGHTNING PROTECTION  
AIR TERMINAL DETAIL

SCALE N.T.S.



ACAD FILE # 14021.00-902

DATE ..

PLOT SCALE : 3" = 1'-0"

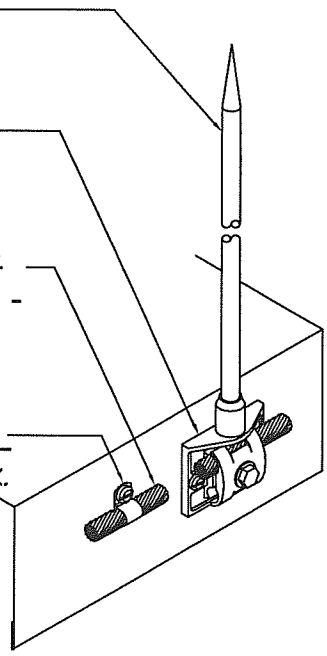
PROJECT NUMBER: 14021.00

1/2" X 12" SOLID  
COPPER AIR TERMINAL

BRONZE  
PARAPET BASE

CLASS I COPPER  
LIGHTNING CONDUCTOR (24  
STRANDS OF 14 AWG WIRES -  
98 LBS. PER 1000')

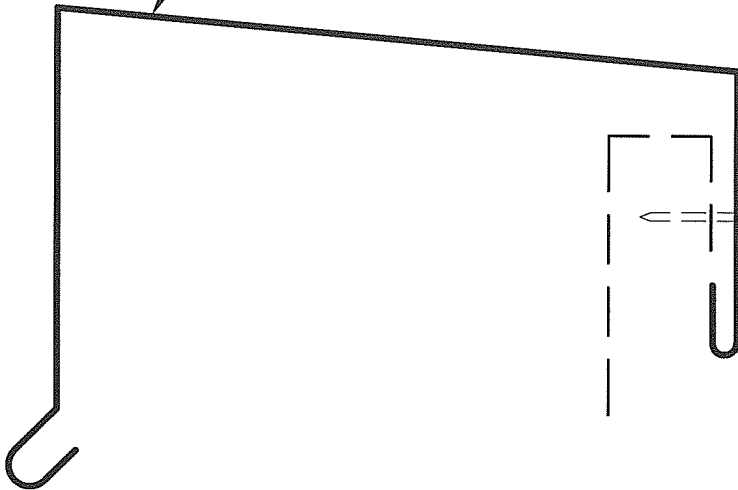
COPPER LOOP CABLE  
CLIP WITH STAINLESS STEEL  
FASTENER - EVERY 3' MAX.



COPPER - AIR TERMINAL

AIR TERMINAL ATTACHMENT  
DETAIL  
NTS

COPING CAP



COPPER LIGHTNING  
CONDUCTOR

1/4"φ x 3/4" ST. STL. SCREWS  
TO ANCHOR LIGHTNING  
PROTECTION COMPONENTS.

BRONZE PARAPET BASE  
(SEE DETAIL ABOVE)

FLASHING TAPE

AIR TERMINAL FLASHING  
NTS



**A/R/C Associates Incorporated**

601 NORTH FERN CREEK AVENUE SUITE 100  
ORLANDO, FLORIDA 32803-4899  
TEL (407)896-7875 FAX (407)896-6043

TITLE LIGHTNING AIR TERMINAL  
DETAIL AT PARAPET

SCALE N.T.S.

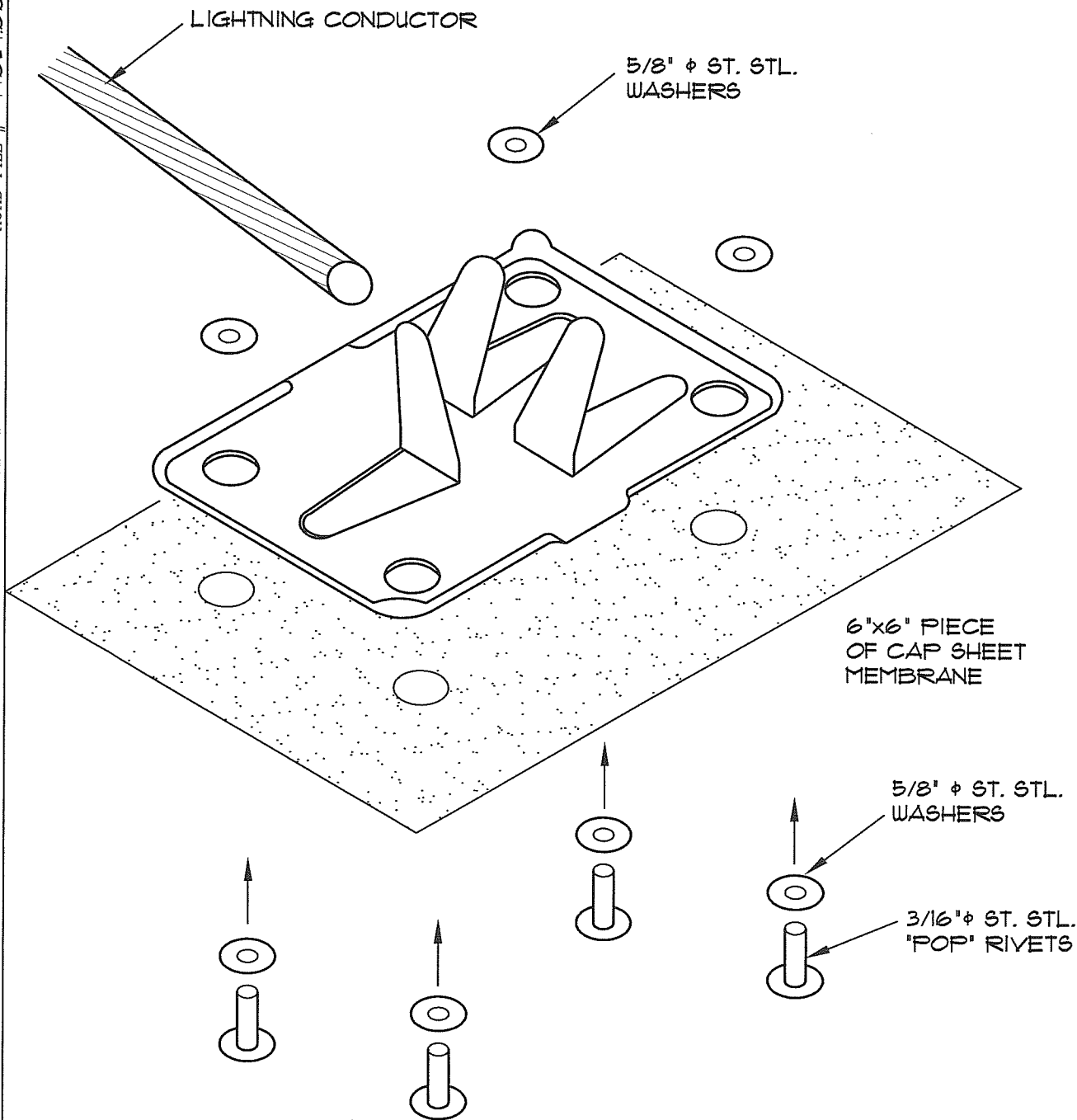


ACAD FILE # 1402100-903

DATE: ..

PLOT SCALE : 3" = 1'-0"

PROJECT NUMBER: 1402100



NOTE: THE ABOVE IS A PATENTED ASSEMBLY MANUFACTURED BY & AVAILABLE FROM WHITE LIGHTNING LLC PHONE: 813-240-6548

1. PREASSAMBLE ABOVE ANCHOR SYSTEM
2. ADHERE TO ROOF SYSTEM BY TORCH OR MASTIC
3. INSTALL & SECURE CABLES
4. LOCATE PER U.L. REQMT'S.



**A/R/C Associates Incorporated**  
 601 NORTH FERN CREEK AVENUE SUITE 100  
 ORLANDO, FLORIDA 32803-4899  
 TEL. (407)896-7875 FAX (407)898-6043

TITLE TYP. LIGHTNING CONDUCTOR ANCHORAGE DETAIL

SCALE N.T.S.

