

ORANGE COUNTY, FLORIDA

ORANGE COUNTY MAYOR
TERESA JACOBS



DISTRICT 3 COMMISSIONER
PETE CLARKE

DISTRICT 4 COMMISSIONER
JENNIFER THOMPSON

DISTRICT 5 COMMISSIONER
TED B. EDWARDS

DISTRICT 1 COMMISSIONER
S. SCOTT BOYD

DISTRICT 2 COMMISSIONER
FREDERICK C. BRUMMER

DISTRICT 6 COMMISSIONER
TIFFANY MOORE RUSSELL

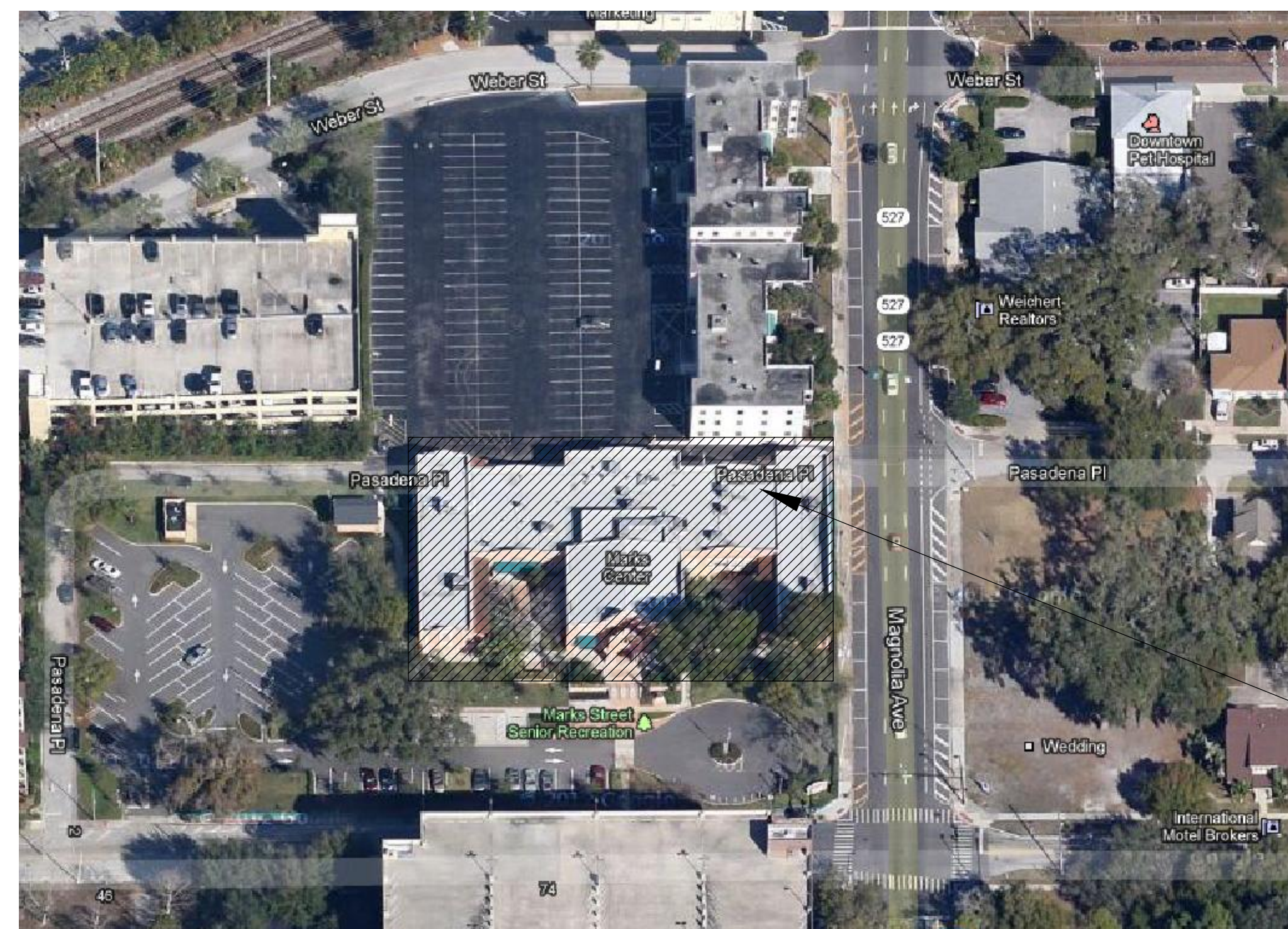
MARKS STREET SENIOR CENTER FIRE ALARM REPLACEMENT

06/17/14
BID DOCUMENTS

mp MATERN PROFESSIONAL ENGINEERING, INC.
 ENG. BUS. No. EB-005096
 CERT. OF AUTH. No. 5096
 130 Candace Drive
 Maitland, FL 32751-3331
 PHONE (407) 740-5020
 FAX (407) 740-0365

PRIME CONSULTANT
MATERN PROFESSIONAL ENGINEERING, INC.

99 EAST MARKS STREET
ORLANDO, FLORIDA 32803



SITE LOCATION

SHEET NO.	ELECTRICAL SHEET INDEX	SCALE
E-O.C	SCOPE OF WORK, LEGEND, GENERAL NOTES AND RISER DIAGRAM	NONE
E-1.C	FLOOR PLAN FIRE ALARM SYSTEM	1/8"=1'-0"



PARCEL ID: 23-22-29-1300-00-470
 MODEL CODE: 04 - Commercial
 TYPE CODE: 8600 - County

MATERN PROFESSIONAL ENGINEERING
 PLOT DATE: 6/12/2014 2:52:09 PM
 FILENAME: Y:\AutoCAD Files\Architect\Matern\OC Fire Alarm System Replacement Projects\OC Marks Street Senior Center Fire Alarm\E-1.C.dwg
 CREATE DATE: 2/7/2013 11:52:58 AM
 LAST SAVED: 1/14/2014 4:27:55 PM
 JUST SAVED BY: MBOUWER

ORANGE COUNTY MARKS STREET SENIOR CENTER FIRE ALARM REPLACEMENT

AUGUSTO E. ROBES JR., P.E.
 FLORIDA P.E. # 39410
BOBES ASSOCIATES
 CONSULTING ENGINEERS
 150 CIRCLE DRIVE, MAITLAND, FL 32751
 TELEPHONE: 407.628.0882
 E-MAIL: INFO@BOBES.COM
 FLORIDA STATE P.E. NUMBER: 5131

Revisions

No.	Date	Description

Key Plan

MPE PROJ#: 2013-009

Designed By: WMC

Drawn By: WMC

Checked By: WMC

Issue Date: 06/17/14

Drawing Scale: 1/8"=1'-0"

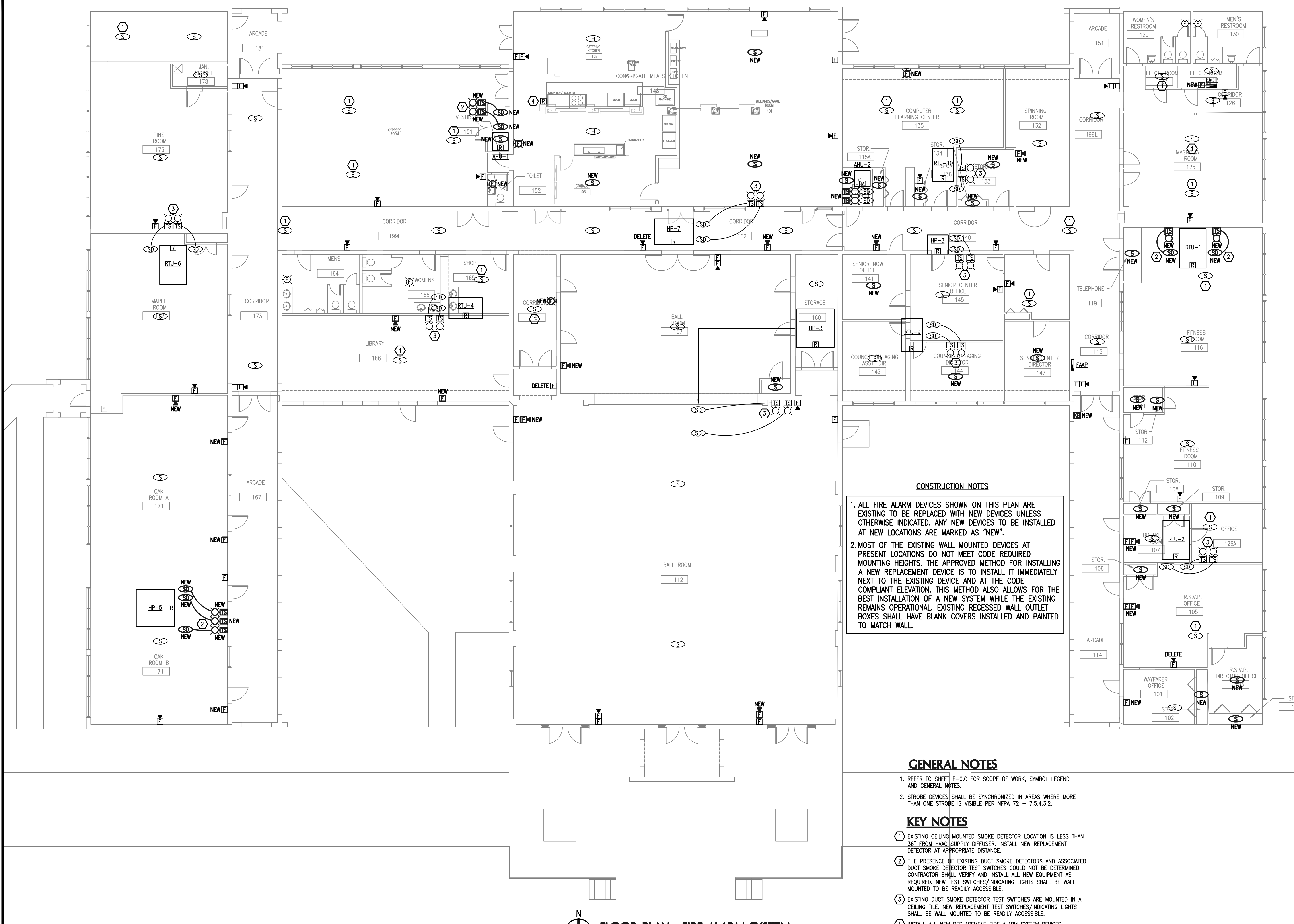
Drawing Title:

FLOOR PLAN FIRE ALARM SYSTEM

BID DOCUMENTS

Drawing No.

E-1.C



CONSTRUCTION NOTES

- ALL FIRE ALARM DEVICES SHOWN ON THIS PLAN ARE EXISTING TO BE REPLACED WITH NEW DEVICES UNLESS OTHERWISE INDICATED. ANY NEW DEVICES TO BE INSTALLED AT NEW LOCATIONS ARE MARKED AS "NEW".
- MOST OF THE EXISTING WALL MOUNTED DEVICES AT PRESENT LOCATIONS DO NOT MEET CODE REQUIRED MOUNTING HEIGHTS. THE APPROVED METHOD FOR INSTALLING A NEW REPLACEMENT DEVICE IS TO INSTALL IT IMMEDIATELY NEXT TO THE EXISTING DEVICE AND AT THE CODE COMPLIANT ELEVATION. THIS METHOD ALSO ALLOWS FOR THE BEST INSTALLATION OF A NEW SYSTEM WHILE THE EXISTING REMAINS OPERATIONAL. EXISTING RECESSED WALL OUTLET BOXES SHALL HAVE BLANK COVERS INSTALLED AND PAINTED TO MATCH WALL.

GENERAL NOTES

- REFER TO SHEET E-0.C FOR SCOPE OF WORK, SYMBOL LEGEND AND GENERAL NOTES.
- STROBE DEVICES SHALL BE SYNCHRONIZED IN AREAS WHERE MORE THAN ONE STROBE IS VISIBLE PER NFPA 72 - 7.5.4.3.2.

KEY NOTES

- EXISTING CEILING MOUNTED SMOKE DETECTOR LOCATION IS LESS THAN 36" FROM HVAC SUPPLY DIFFUSER. INSTALL NEW REPLACEMENT DETECTOR AT APPROPRIATE DISTANCE.
- THE PRESENCE OF EXISTING DUCT SMOKE DETECTORS AND ASSOCIATED DUCT SMOKE DETECTOR TEST SWITCHES COULD NOT BE DETERMINED. CONTRACTOR SHALL VERIFY AND INSTALL ALL NEW EQUIPMENT AS REQUIRED. NEW TEST SWITCHES/INDICATING LIGHTS SHALL BE WALL MOUNTED TO BE READILY ACCESSIBLE.
- EXISTING DUCT SMOKE DETECTOR TEST SWITCHES ARE MOUNTED IN A CEILING TILE. NEW REPLACEMENT TEST SWITCHES/INDICATING LIGHTS SHALL BE WALL MOUNTED TO BE READILY ACCESSIBLE.
- INSTALL ALL NEW REPLACEMENT FIRE ALARM SYSTEM DEVICES ASSOCIATED WITH KITCHEN HOOD FIRE SUPPRESSION SYSTEM AND ANY UNDER-HOOD ELECTRICAL EQUIPMENT AND HOOD SUPPLY FAN SHUT-DOWN.

FLOOR PLAN - FIRE ALARM SYSTEM
 SCALE: 1/8"=1'-0"