

# ORANGE COUNTY CONVENTION CENTER

ORANGE COUNTY MAYOR  
TERESA JACOBS



DISTRICT 3 COMMISSIONER  
PETE CLARKE

DISTRICT 4 COMMISSIONER  
JENNIFER THOMPSON

DISTRICT 1 COMMISSIONER  
S. SCOTT BOYD

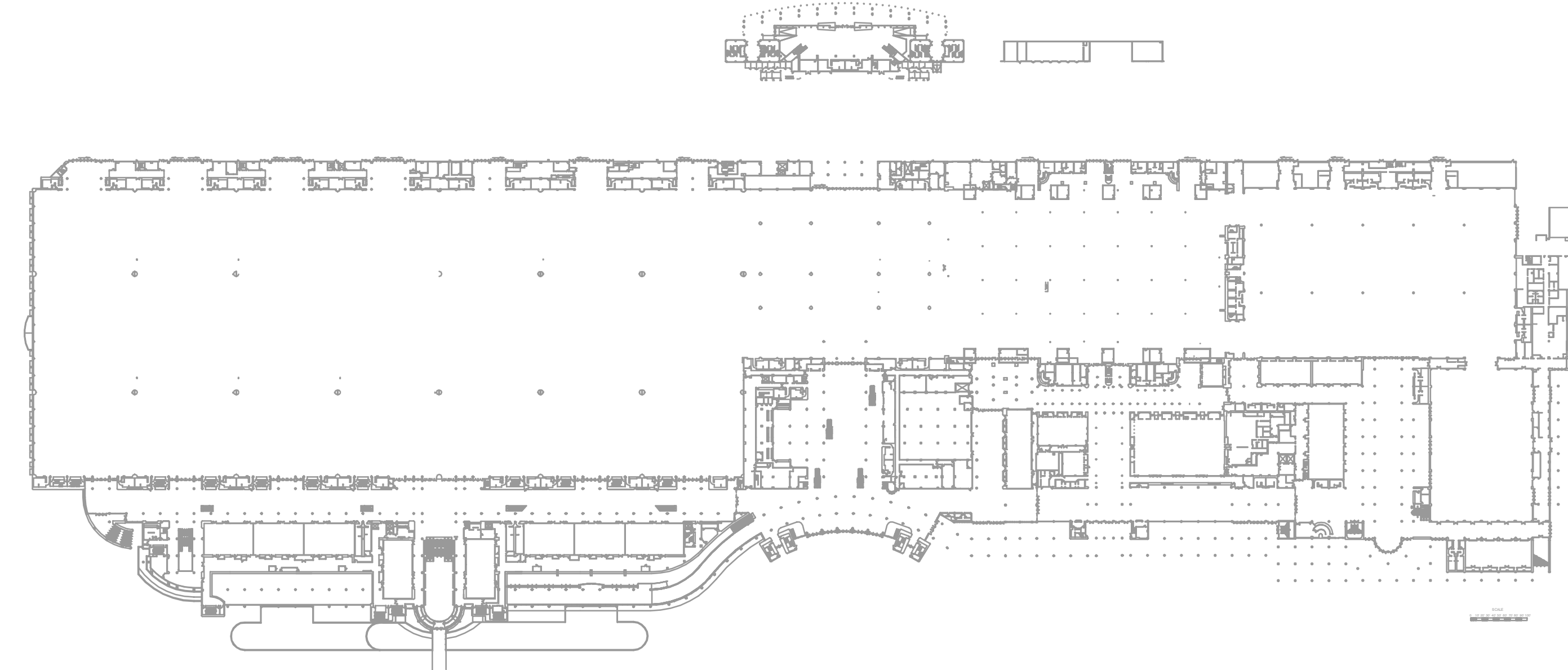
DISTRICT 5 COMMISSIONER  
TED EDWARDS

DISTRICT 2 COMMISSIONER  
BRYAN NELSON

Orange  
County  
Convention  
Center

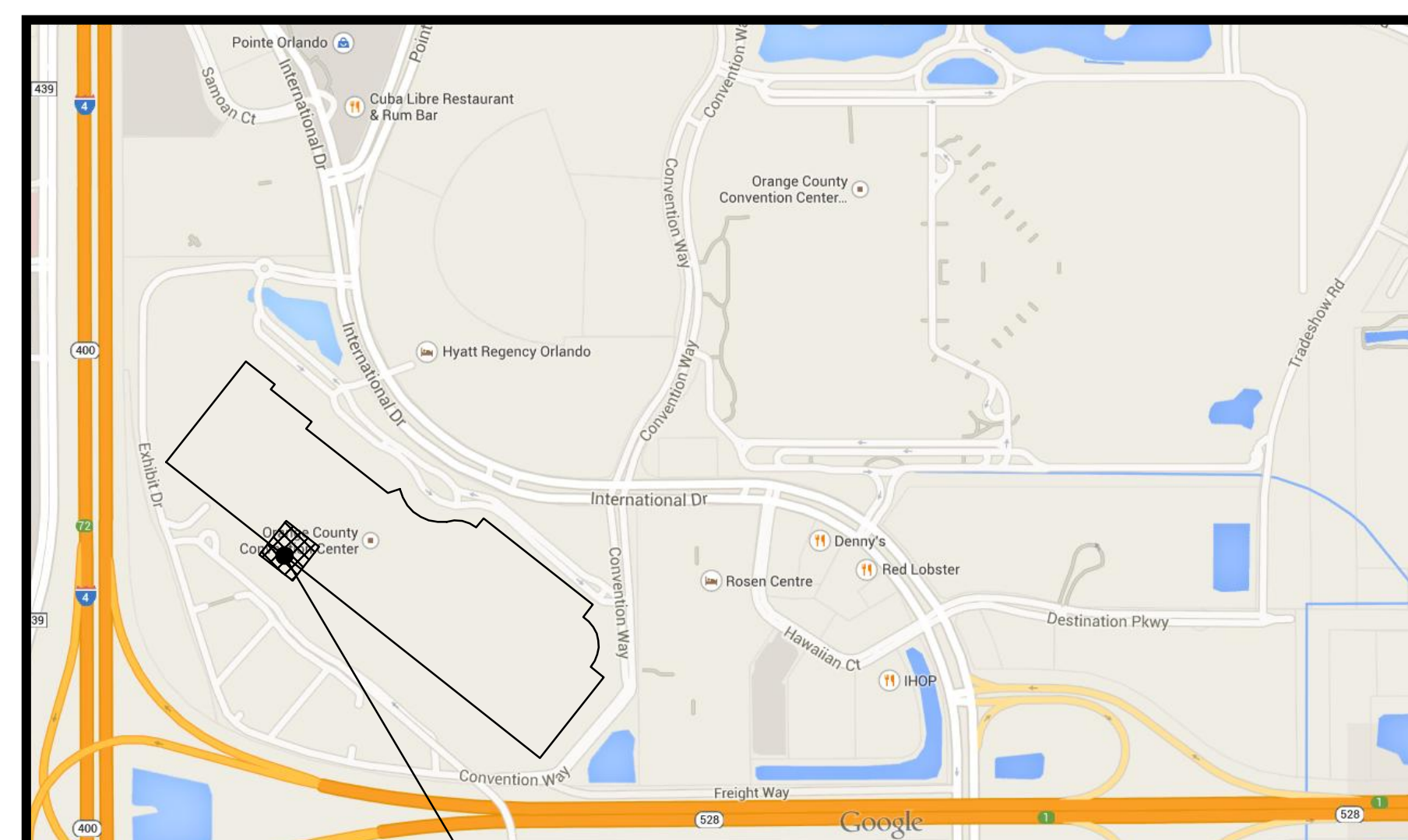
DISTRICT 6 COMMISSIONER  
VICTORIA P. SIPLIN

## WEST BUILDING GREASE TRAP REPLACEMENT

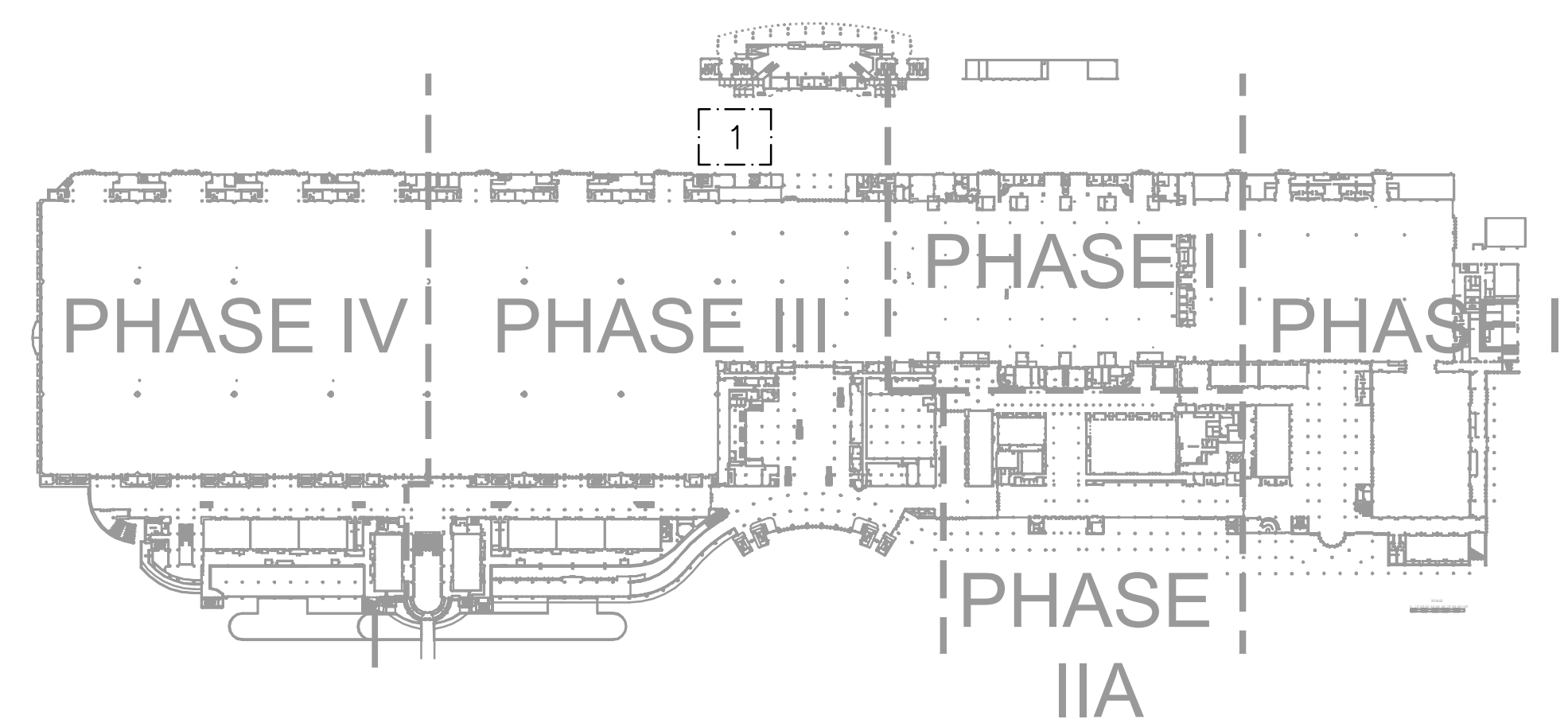


WEST BLDG

KEY PLAN  
N.T.S.

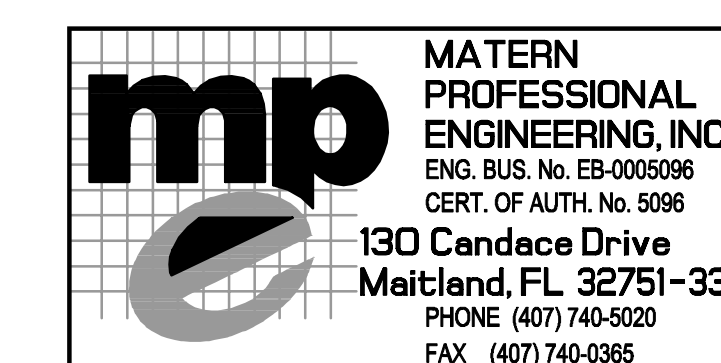


SITE LOCATION



AREA KEY PLAN

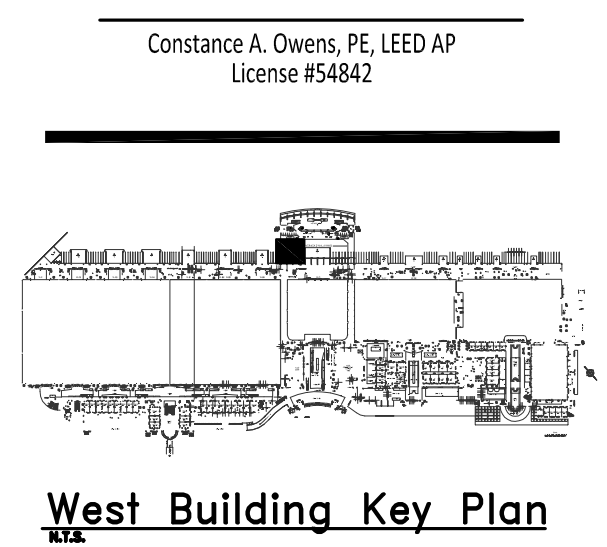
SHEET NO.	SHEET INDEX	SCALE
	COVER SHEET	
C-100	DEMOLITION PLAN & GENERAL NOTES	AS SHOWN
C-400	PRELIMINARY UTILITY PLAN	AS SHOWN
P101	PARTIAL SITE AND BUILDING PLAN - PLUMBING	1/8"=1'-0"
P201	DETAILS - PLUMBING	1/8"=1'-0"



BID DOCUMENTS  
June 29, 2015



**ORANGE COUNTY CONVENTION WEST BUILDING GREASE TRAP REPLACEMENT**



Revisions

No.	Date	Description

MPE PROJ#: 2014-140  
 Designed By: CAO  
 Drawn By: CAO  
 Checked By: CAO  
 Issue Date: 06/29/15  
 Drawing Scale: AS SHOWN  
 Drawing Title:

**UTILITY PLAN**  
 BID DOCUMENTS  
 Drawing No.  
**C-400**

**SITE UTILITY NOTES**

- THE LOCATION OF EXISTING UTILITIES, SUCH AS WATER MAINS, SEWERS, GAS LINES, ETC. AS SHOWN ON THE PLANS HAVE BEEN DETERMINED FROM THE BEST AVAILABLE INFORMATION AND IS PROVIDED FOR THE CONVENIENCE OF THE CONTRACTOR. BE ADVISED THAT THE ENGINEER AND OWNER DO NOT ASSUME RESPONSIBILITY FOR THE ACCURACY OF THE LOCATIONS SHOWN. IT SHALL BE THE RESPONSIBILITY OF THE CONTRACTOR TO CONTACT ALL UTILITY COMPANIES FORTY-EIGHT (48) HOURS PRIOR TO COMMENCEMENT OF CONSTRUCTION IN ORDER TO HAVE THE UTILITIES MARKED AND LOCATED IN THE FIELD PRIOR COMMENCEMENT OF ANY WORK.
- WHERE APPLICABLE UTILITY TRENCHES CROSSING PAVEMENT AREAS SHALL BE BACKFILLED WITH GRANULAR MATERIAL IN TWELVE INCH (12") LAYERS AND COMPACTED TO NINETY-EIGHT PERCENT (98%) MAXIMUM DENSITY AS DETERMINED BY AASHTO T-99.
- ALL UNSUITABLE MATERIALS UNDER WATER PIPES SHALL BE REMOVED AND REPLACED WITH SELECTED BACKFILL COMPACTED TO NINETY-EIGHT PERCENT (98%) OF ITS MAXIMUM DENSITY AT TWO PERCENT (2.0%) MORE OR LESS OF OPTIMUM MOISTURE CONTENT AS DETERMINED BY THE MODIFIED PROCTOR TEST (ASTM D1557).
- ANY DAMAGE TO UNDERGROUND UTILITIES AND/OR STRUCTURES SHALL BE REPAIRED AT THE CONTRACTORS EXPENSE.
- THE CONTRACTOR SHALL INSTALL ALL WATER AND SEWER LINES AND SERVICES AT A MINIMUM OF THIRTY-SIX INCHES (36") BELOW FINISHED GRADE TO TOP OF PIPE UNLESS INDICATED OTHERWISE ON THE PLANS.
- ALL MATERIALS AND CONSTRUCTION ARE TO BE IN ACCORDANCE WITH CITY, STATE, AND COUNTY STANDARDS AND SPECIFICATIONS.
- ALL SANITARY SEWER GRAVITY PIPE SHALL BE POLYVINYL CHLORIDE (PVC) CONFORMING TO ASTM-3034, SDR 35 AND BE INSTALLED IN ACCORDANCE WITH ASTM D-2321.
- SANITARY SEWER PRESSURE PIPE SHALL BE POLYVINYL CHLORIDE (PVC) CONFORMING TO AWWA C900 WITH DIMENSION RATIO (DR) OF TWENTY FIVE (25) AND A MINIMUM PRESSURE CLASS OF ONE HUNDRED POUNDS PER SQUARE INCH (100 P.S.I.).
- WHERE APPLICABLE, SIX INCH (6") POLYVINYL CHLORIDE SEWER LATERALS SHALL HAVE A MINIMUM SLOPE OF ONE PERCENT (1.0%) AND FOUR INCH (4") POLYVINYL CHLORIDE SEWER LATERALS SHALL HAVE A MINIMUM SLOPE OF TWO PERCENT (2.0%).
- WATER SERVICE PIPE SHALL BE POLYVINYL CHLORIDE PRESSURE PIPE CONFORMING TO AWWA C900 WITH DIMENSION RATIO (DR) OF EIGHTEEN (18) AND A MINIMUM PRESSURE CLASS OF ONE HUNDRED FIFTY POUNDS PER SQUARE INCH (150 P.S.I.).
- ALL WATER PIPE SHALL BE DISINFECTED AND HYDROSTATICALLY TESTED IN ACCORDANCE WITH AWWA STANDARDS C651, C600 OR M23 FOR POLY VINYL CHLORIDE AND COUNTY SPECIFICATIONS. THE CONTRACTOR SHALL PROVIDE AT HIS EXPENSE, ALL NECESSARY TESTING EQUIPMENT, PRESSURE GAUGES, WATER METERS AND FACILITIES REQUIRED FOR PRESSURE AND LEAKAGE TESTING.
- FULLY RESTRAINED DUCTILE IRON PIPING SHALL BE USTR FLEX OR APPROVED EQUAL.
- PVC JOINT RESTRAINT SHALL BE UNI-FLANGE SERIES 1350 OR APPROVED EQUAL.
- SITE LIGHTING SHALL BE INSTALLED AS TO NOT ILLUMINATE OR SHADOW ADJACENT PROPERTIES.
- ALL "ON-SITE" WATER AND SANITARY SEWER IMPROVEMENTS SHALL BE INSTALLED AND MAINTAINED BY THE OWNER IN CONFORMANCE WITH THE LOCAL UTILITY PROVIDER. ALL "OFFSITE" WATER AND SANITARY SEWER IMPROVEMENTS (IF APPLICABLE) SHALL BE INSTALLED BY THE OWNER AND MAINTAINED BY THE LOCAL UTILITY PROVIDER.
- CONTRACTOR IS TO ADJUST ANY UTILITY ELEMENT MEANT TO BE FLUSH WITH GRADE (CLEAN OUTS, MANHOLES, CATCH BASINS, INLETS, ETC.) THAT IS AFFECTED BY SITE WORK OR GRADE CHANGES, WHETHER SPECIFICALLY NOTED ON PLANS OR NOT.
- ELECTRICAL, TELEPHONE, GAS AND CABLE TELEVISION SERVICE WILL BE PROVIDED BY THE APPROPRIATE UTILITY COMPANIES. THE CONTRACTOR SHALL COORDINATE LOCATIONS AND SERVICES FOR THESE UTILITIES WITH THE ENTITIES INVOLVED.
- THE ON-SITE WASTEWATER COLLECTION SYSTEM SHALL BE PRIVATELY OWNED AND MAINTAINED.
- THE CONTRACTOR SHALL NOTIFY THE ORANGE COUNTY UTILITIES DEPARTMENT FORTY-EIGHT (48) HOURS PRIOR TO START OF ANY UTILITIES CONSTRUCTION.
- ALL PROPOSED UTILITIES CONSTRUCTION THAT WILL BE CONNECTING TO THE OCU WATER AND WASTEWATER SYSTEMS SHALL CONFORM TO THE ORANGE COUNTY MANUAL OF STANDARDS AND SPECIFICATIONS FOR WASTEWATER AND WATER MAIN CONSTRUCTION, LATEST EDITION.

**EMERGENCY WASTEWATER AND WATER MAIN BREAK PROCEDURES:**

- EXCAVATE CAUTIOUSLY:**  
THE CONTRACTOR SHALL EXERCISE EXTREME CAUTION WHEN EXCAVATING IN PROXIMITY OF WASTEWATER FORCE MAINS AND GRAVITY SEWERS. FORCE MAIN AND SEWER LOCATIONS SHOWN ON PLANS ARE NOT EXACT DR GUARANTEED. CONTRACTOR IS RESPONSIBLE FOR FIELD VERIFICATION.
- TELEPHONE NOTIFICATION:**  
THE ORANGE COUNTY DISPATCH OPERATION SHALL BE GRAVITY SEWER OR WATER MAIN BREAK DAMAGE AT 407-254-9798.
- REPAIR IMMEDIATELY:**  
ALL DAMAGE TO DRANGE COUNTY'S MAINS SHALL BE REPAIRED IMMEDIATELY BY THE CONTRACTOR AT THE CONTRACTOR'S EXPENSE IF THE REPAIR IS NOT MADE IN A TIMELY MANNER, AS DETERMINED BY THE ORANGE COUNTY UTILITIES INSPECTOR. DRANGE COUNTY MAY PERFORM REPAIRS AND THE CONTRACTOR WILL BE CHARGED FOR REPAIRS.
- ORANGE COUNTY UTILITIES DEPARTMENT GENERAL:**  
ORANGE COUNTY UTILITIES CONSTRUCTION INSPECTION SECTION 407-254-9798.  
ORANGE COUNTY UTILITIES ENGINEERING DIVISION 407-254-9680.
- ADVANCED NOTIFICATION OF CONSTRUCTION:**  
THE ORANGE COUNTY UTILITIES CONSTRUCTION SECTION (407-254-9798) SHALL BE NOTIFIED AT LEAST 7 DAYS PRIOR TO ANY CONSTRUCTION ACTIVITY.
- ADVANCED NOTIFICATION OF PENDING CONNECTION:**  
THE ORANGE COUNTY WATER DIVISION (407-254-9768) AND THE ORANGE COUNTY WASTEWATER DIVISION (407-254-9680) SHALL BE NOTIFIED AT LEAST (7) DAYS IN ADVANCE TO SCHEDULE MAIN TIE-INS AND VALVE OPERATION.
- OPERATION OF ORANGE COUNTY VALVES:**  
WATER, WASTEWATER, AND REUSE VALVES ARE TO BE OPERATED ONLY BY ORANGE COUNTY UTILITIES INSPECTOR (836-7274). ALL VALVES BEING INSTALLED ARE TO REMAIN CLOSED DURING CONSTRUCTION.
- OPERATION OF ORANGE COUNTY PUMP STATIONS:**  
THE CONTRACTOR SHALL COORDINATE ALL PUMP STATION OPERATION AND SHUT DOWN WITH THE ORANGE COUNTY UTILITY INSPECTOR (407-254-9798).

ORANGE COUNTY UTILITIES STANDARDS AND CONSTRUCTION SPECIFICATIONS MANUAL

**APPENDIX A STANDARD DRAWINGS GENERAL**  
 DATE: February 11, 2011 **SEPARATION REQUIREMENTS FOR WATER, WASTEWATER AND RECLAIMED WATER MAINS** **FIGURE A116**

PROPOSED UTILITY	HORIZONTAL & VERTICAL SEPARATION REQUIREMENTS							
	POTABLE WATER		RECLAIMED WATER		WASTEWATER (GRAVITY & FM)		STORM SEWER	
	HORIZ	VERT	HORIZ	VERT	HORIZ	VERT	HORIZ	VERT
POTABLE WATER	3'	12"	3'	12"	6'	12"	3'	12"/18"
	NOTE 1		NOTE 1 & 3	NOTE 3	NOTE 3	NOTE 3	NOTE 1 & 3	NOTE 2 & 3
RECLAIMED WATER	3'	12"	3'	12"	3'	12"	3'	12"/18"
	NOTE 1 & 3	NOTE 3	NOTE 1	NOTE 1	NOTE 1	NOTE 1	NOTE 1	NOTE 2
WASTEWATER (GRAVITY AND FM)	6'	12"	3'	12"	3'	12"	3'	12"/18"
	NOTE 3	NOTE 3	NOTE 1	NOTE 1	NOTE 1	NOTE 1	NOTE 1	NOTE 2
RIGHT OF WAY	3'	N/A	3'	N/A	3'	N/A	N/A	N/A
	NOTE 1		NOTE 1		NOTE 1			

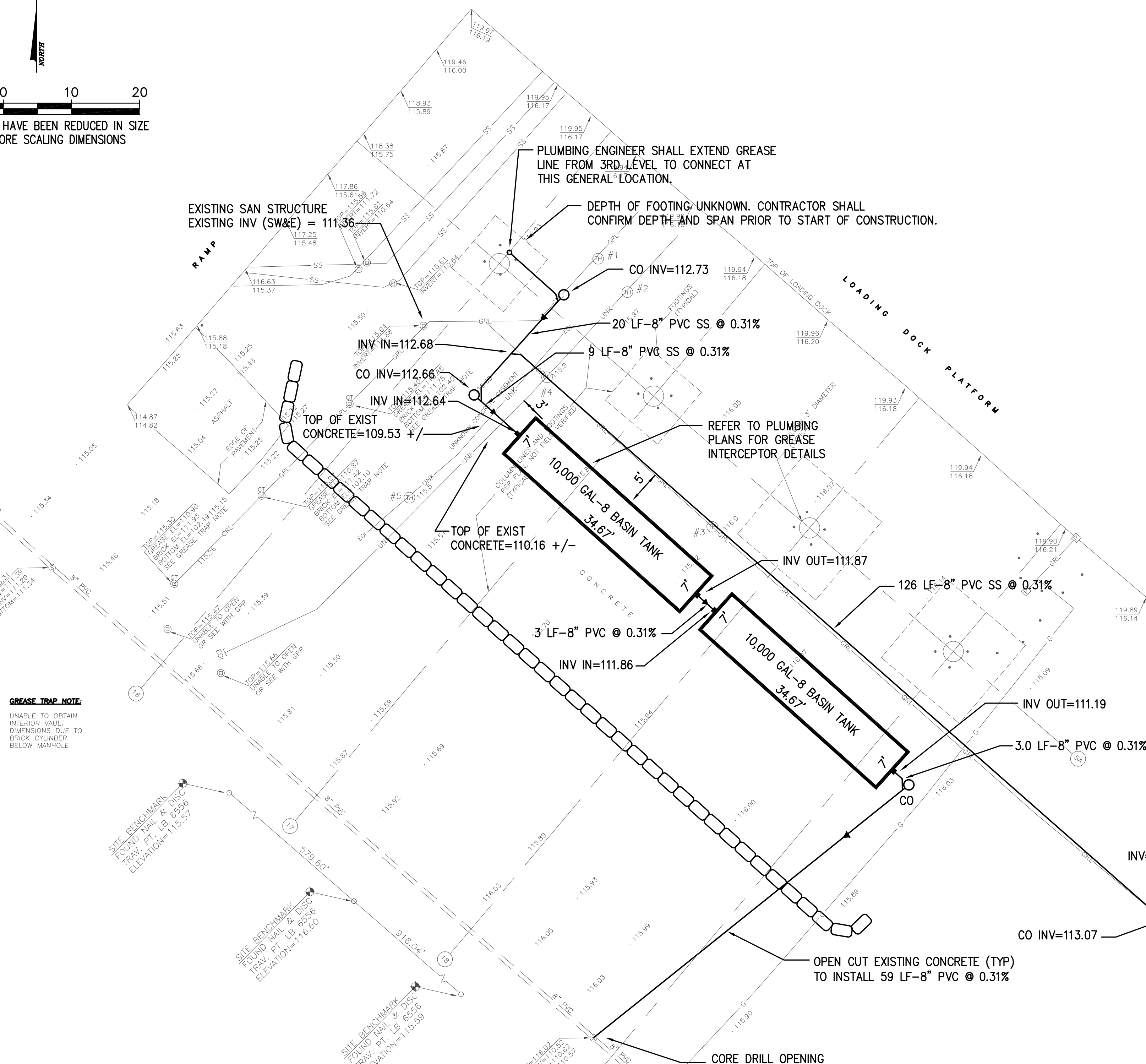
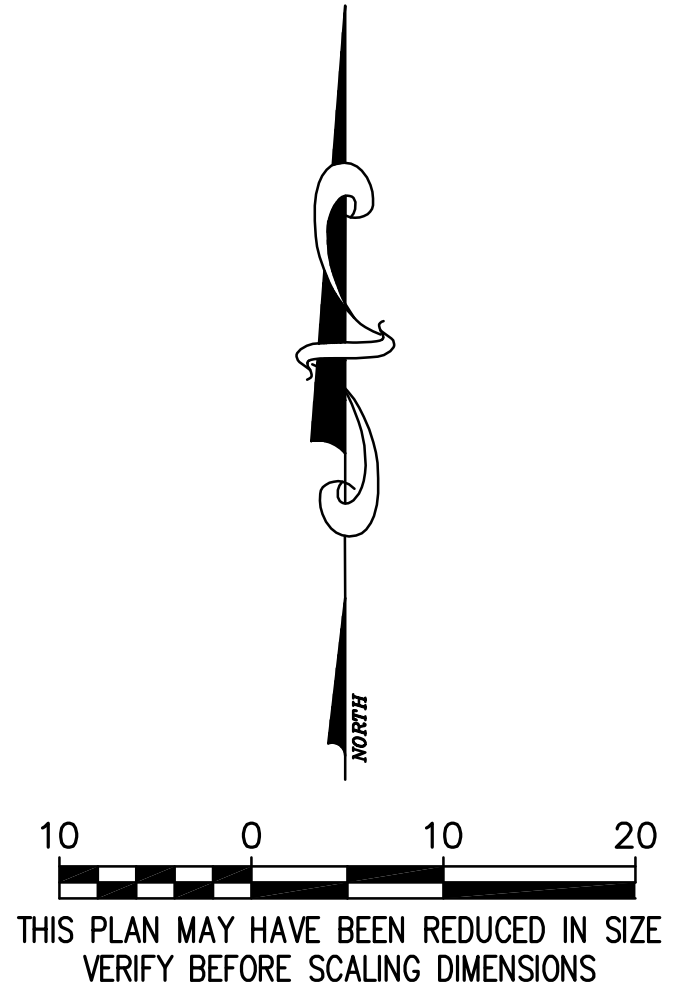
- NOTES:
- THIS SEPARATION REQUIREMENT IS TO PROVIDE ACCESSIBILITY FOR CONSTRUCTION AND MAINTENANCE. THREE FEET OF HORIZONTAL SEPARATION IS THE MINIMUM FOR PIPES WITH THREE FEET OF COVER. FOR PIPES INSTALLED AT GREATER DEPTHS, PROVIDE AN ADDITIONAL FOOT OF SEPARATION FOR EACH ADDITIONAL FOOT OF DEPTH.
  - THE 18-INCH SEPARATION REQUIREMENT APPLIES WHEN THE STORM PIPE CROSSES ABOVE THE OCU MAIN, AND WHEN THE STORM PIPE HAS A DIAMETER EQUAL TO OR GREATER THAN 24 INCHES. OTHERWISE, THE REQUIRED SEPARATION IS 12 INCHES.
  - THIS SEPARATION REQUIREMENT COMPLIES WITH MINIMUM FDEP SEPARATION REQUIREMENTS OUTLINED IN 62-555.314, FAC. VARIANCES FROM THE FDEP REQUIREMENTS MUST COMPLY WITH 62-555.314(5), FAC AND MUST BE APPROVED INDIVIDUALLY BY BOTH FDEP AND OCU.
  - DISTANCES GIVEN ARE FROM OUTSIDE OF PIPE TO OUTSIDE OF PIPE.
  - NO WATER PIPE SHALL PASS THROUGH OR COME IN CONTACT WITH ANY PART OF SANITARY OR STORM WATER MANHOLE OR STRUCTURE.



**Civil Engineering Design Studio, Inc.**  
 P.O. Box 520926  
 Longwood, Florida 32750-0062  
 Ph: 407-488-9456 Fax: 407-641-9993  
 CERTIFICATE OF AUTHORIZATION No. 28312

**NOTES PERTAINING TO AIR QUALITY CONTROL MEASURES**

- NO PERSON SHALL CAUSE, LET, SUFFER, ALLOW, OR PERMIT THE EMISSIONS OF UNCONFINED PARTICULATE MATTER FROM ANY ACTIVITY, INCLUDING VEHICULAR MOVEMENT; TRANSPORTATION OF MATERIALS; CONSTRUCTION, ALTERATION, DEMOLITION OR WRECKING; OR INDUSTRIALLY RELATED ACTIVITIES SUCH AS LOADING, UNLOADING, STORING, OR HANDLING; WITHOUT TAKING REASONABLE PRECAUTIONS TO PREVENT SUCH EMISSIONS.
- REASONABLE PRECAUTIONS TO PREVENT SUCH EMISSIONS ARE LISTED IN THE ORANGE COUNTY CODE. REFER TO ORANGE COUNTY CODE CHAPTER 15: ENVIRONMENTAL CONTROL, ARTICLE III - AIR QUALITY CONTROL, 15-89.1 (b).



**GREASE TRAP NOTE:**  
 UNABLE TO OBTAIN INTERIOR WALL DIMENSIONS DUE TO BRICK COLUMN BELOW MANHOLE

**SITE BENCHMARK:**  
 FOUNDATION PT. LB 2559  
 ELEVATION=115.27

**SITE BENCHMARK:**  
 FOUNDATION PT. LB 2558  
 ELEVATION=116.00

**SITE BENCHMARK:**  
 FOUNDATION PT. LB 2559  
 ELEVATION=115.27

- ALL CONCRETE REMOVED FOR INSTALLATION OF NEW GREASE INTERCEPTORS AND SANITARY SEWER PIPING SHALL BE MINIMUM 8" THICK, 4,000 PSI IN 28 DAYS WITH FIBER REINFORCEMENT OR TO MATCH EXISTING.
- EXISTING SUBSURFACE CONDITIONS ARE UNKNOWN. A SUBSURFACE SOILS INVESTIGATION REPORT SHALL BE PROVIDED BY THE OWNER. PAVEMENT THICKNESS PROPOSED ON THESE PLANS IS MINIMUM THICKNESS FOR WELL-DRAINED SOILS CONDITIONS WITH A MINIMUM OF ONE (1) FOOT OF SEPARATION FROM THE SEASONAL HIGH WATER TABLE ELEVATION. THE GEOTECHNICAL ENGINEER SHALL CONFIRM THAT THE PAVEMENT THICKNESS PROPOSED ON THIS PLAN IS ACCEPTABLE.
- SAWCUT PATTERNS SHOULD EXTEND TO A DEPTH OF AT LEAST ONE QUARTER OF THE CONCRETE PAVEMENT THICKNESS.
- MAINTAIN MINIMUM 3 FOOT OF COVER OVER PIPE UNLESS NOTED OTHERWISE ON THESE PLANS.

TEST HOLE #1  
 UTILITY: PRIVATE/O.C.C.C  
 6-1/2" METAL SANITARY LINE  
 GRADE ELEVATION=115.98  
 TOP=112.18

TEST HOLE #2  
 UTILITY: PRIVATE/O.C.C.C  
 (4) 1-1/2" PVC (GRAY) ELECTRIC LINE  
 GRADE ELEVATION=116.00  
 TOP=110.90  
 UTILITY: PRIVATE/O.C.C.C  
 4-1/2" PVC (GRAY) ELECTRIC LINE  
 TOP=111.70

TEST HOLE #3  
 UTILITY: PRIVATE/O.C.C.C  
 6-1/2" METAL SANITARY LINE  
 GRADE ELEVATION=116.01  
 TOP=112.21

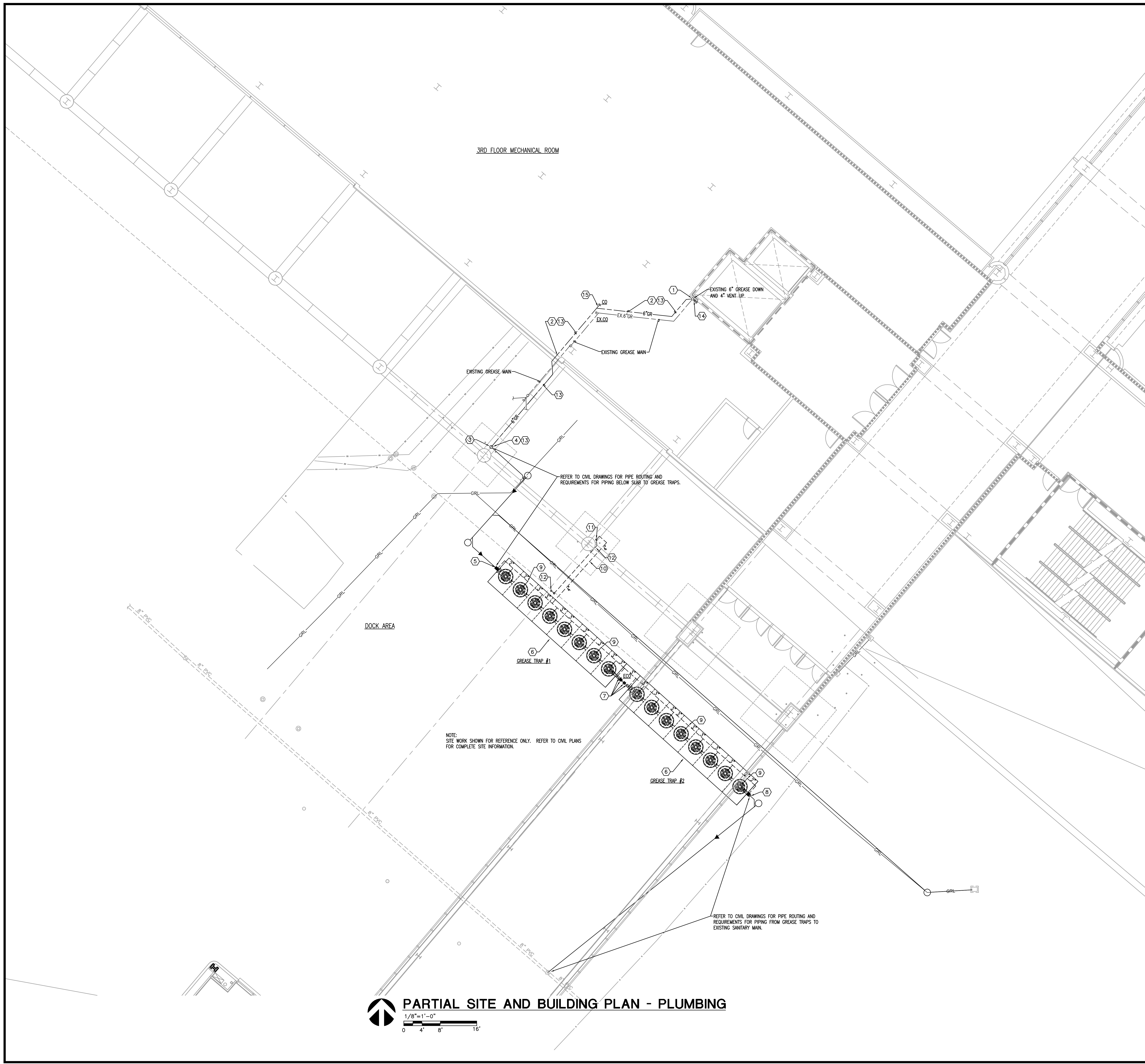
TEST HOLE #4  
 UTILITY: PRIVATE/O.C.C.C  
 6-1/2" METAL SANITARY LINE  
 GRADE ELEVATION=115.86  
 TOP=111.91  
 UTILITY: UNKNOWN  
 (3) 1-1/2" PVC  
 TOP=110.21  
 UTILITY: UNKNOWN  
 (5) 1" PVC  
 TOP=110.26  
 UTILITY: UNKNOWN  
 1-1/2" PVC  
 TOP=110.16  
 UTILITY: UNKNOWN DUCT BANK  
 4-1/2" CONCRETE  
 TOP=110.16

TEST HOLE #5  
 UTILITY: PRIVATE/O.C.C.C  
 (8) 1" PVC (GRAY) & 1-1/2" PVC ELECTRIC LINE  
 GRADE ELEVATION=115.53  
 TOP=109.98  
 UTILITY: PRIVATE/O.C.C.C  
 CONCRETE DUCT BANK  
 ELECTRIC LINE  
 TOP=109.53

ROUND GRATE INLET  
 1" DIAMETER  
 TOP = 110.81  
 BOTTOM CENTER = 112.71  
 FILLED WITH GREASE

LAST SAVED: 5/27/2015 11:03:58 AM  
 CREATE DATE: 5/27/2015 11:02:20 AM  
 LAST SAVED: 5/27/2015 11:03:58 AM  
 PLOT DATE: 11/20/2010 11:20:52 AM  
 MATERN PROFESSIONAL ENGINEERING

LAST SAVED BY: RD/WHIE  
 LAST SAVED: 05/20/15 11:53:21 AM  
 ORIENTATE: 05/20/15 14:25 PM  
 13274\_jacob2014-10\_0000 West Building Grease Trap Replacement (02014-10)\_P101.dwg  
 MATEM PROFESSIONAL ENGINEERING PLOT DATE: 05/20/15 11:27:18 AM

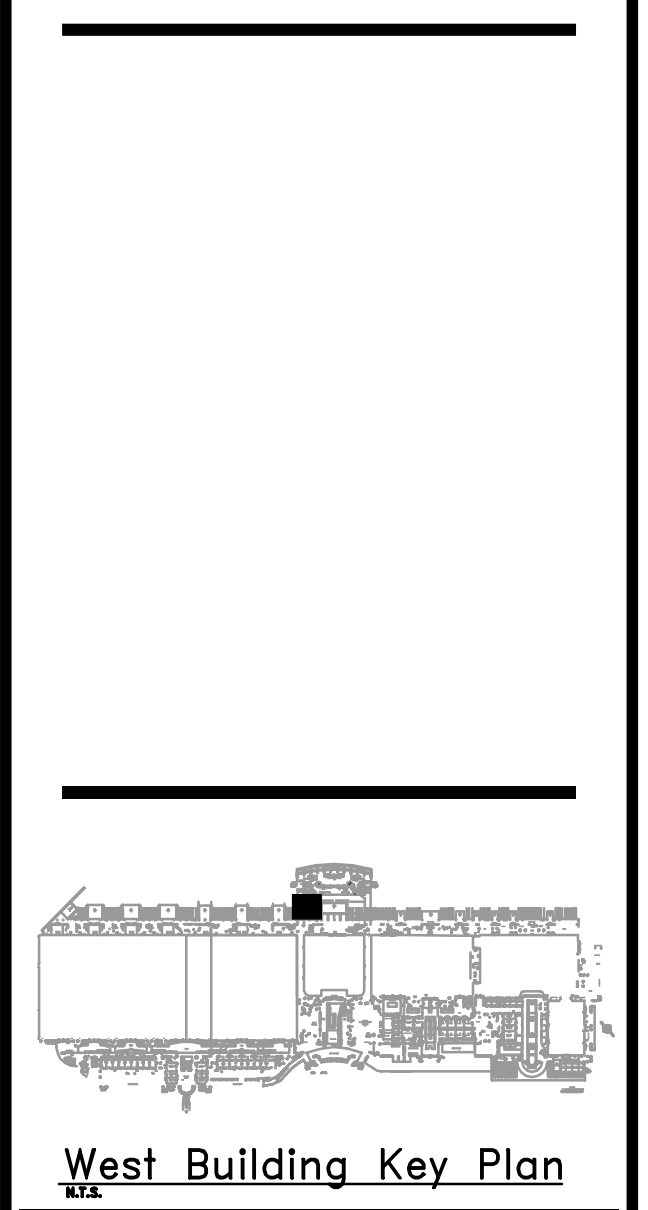


- GENERAL NOTES**
- REFER TO GENERAL NOTES FOR THIS DISCIPLINE.
  - REFER TO SPECIFICATIONS.
  - ALL HEX NOTES NOT NECESSARILY USED ON ALL SHEETS.
  - PIPING SHOWN OFFSET FOR CLARITY OF FIXTURES, EQUIPMENT AND ROUTING INTENT OF DIFFERENT PIPING SYSTEMS.
  - PLUMBING CONTRACTOR SHALL COORDINATE PIPE ROUTING WITH ALL DISCIPLINES.
  - CONTRACTOR SHALL PREPARE COORDINATED SHOP DRAWINGS PRIOR TO INSTALLATION OF PIPING.

- HEX NOTES**
- REMOVAL OF EXISTING PIPE AND CONNECTION OF NEW PIPE
    - DISCONNECT EXISTING 6" GREASE PIPING 18" BELOW EXISTING FITTING FOR CONNECTION OF NEW 6" GREASE PIPING.
    - CUT BACK EXISTING GREASE PIPE DOWN TO 24" ABOVE SLAB AND CAP.
    - CONNECT NEW 6" GREASE PIPE TO EXISTING 6" GREASE PIPE.
  - ROUTE NEW GREASE PIPING IN MECHANICAL ROOM AND THROUGH EXTERIOR WALL.
  - ROUTE NEW GREASE PIPING DOWN COLUMN. SUPPORT PIPING FROM COLUMN. PROVIDE CLEAN OUT 4'-6" ABOVE SLAB.
  - PROVIDE TWO SECTIONS OF 3'-0" HEAVY DUTY STEEL PIPE GUARD FROM 6" ABOVE TOP OF SLAB. PROVIDE GAP BETWEEN SECTIONS OF PIPE GUARD TO ALLOW ACCESS TO CLEAN OUT. BASIS OF DESIGN OMEGA INDUSTRIES PRODUCTS MODEL NUMBER OM33T00M COLUMN MOUNT.
  - COORDINATE INSTALLATION OF GREASE TRAP WITH INVERT PROVIDED ON CIVIL DRAWING.
  - INSTALL GREASE INTERCEPTOR PER MANUFACTURERS INSTRUCTIONS AND DETAIL PROVIDED ON SHEET P201.
  - COORDINATE GREASE TRAP INSTALLATION WITH INVERTS PROVIDED ON CIVIL DRAWING. ROUTE 8" GREASE PIPING FROM GREASE INTERCEPTOR #1 TO GREASE INTERCEPTOR #2. PROVIDE CLEAN OUTS ON PIPING BETWEEN GREASE INTERCEPTORS.
  - COORDINATE OUTLET INVERT WITH CIVIL DRAWING. IF INSTALLED INVERT FALLS BELOW INVERT NOTED ON CIVIL DRAWING CONTRACTOR SHALL NOTIFY ENGINEER IMMEDIATELY.
  - PROVIDE 2" VENT CONNECTION AS SHOWN. ROUTED UNDERGROUND VENT PIPING PARALLEL WITH TANK.
  - ROUTE 4" UNDERGROUND VENT MAIN TO BEHIND COLUMN.
  - ROUTE VENT PIPING UP COLUMN AS TO STRUCTURE ABOVE.
  - OFFSET PIPING BELOW OVERHANG AND UP BUILDING EXTERIOR TO ABOVE PARAPET. PROVIDE GOOSENECK VENT TERMINATION WITH INSECT SCREEN ON OUTLET.
  - NEW GREASE PIPING SHALL BE INSULATED. REFER TO SPECIFICATIONS FOR INSULATION REQUIREMENTS.
  - PROVIDE WYE FITTING IN VERTICAL PIPING. EXTEND PIPE UP ABOVE EXISTING GREASE PIPE AND PROVIDE CLEAN OUT.
  - PROVIDE WYE FITTING AND SECTION OF PIPE FOR FUTURE CONNECTION. PROVIDE CLEAN OUT AT END OF PIPE.

**mp MATERN PROFESSIONAL ENGINEERING**  
 ME/PE/FP Engineering Consultants - A Solutions Based Firm  
 ORLANDO | Fort Myers | Jacksonville | Tampa  
 Matern Professional Engineering, Inc  
 130 Candace Drive  
 Maitland, FL 32751-3331  
 PHONE (407)740-5020 FAX (407)740-0365  
 THIS DRAWING IS THE PROPERTY OF MATERN PROFESSIONAL ENGINEERING, INC. UNLESS OTHERWISE PROVIDED BY THE CONTRACTOR, THE CONTENTS OF THIS DRAWING SHALL NOT BE TRANSMITTED TO ANY OTHER PARTY EXCEPT AS AGREED TO BY THE ENGINEER.  
 ENG. BUS. No. EB-000098 CERT. OF AUTH. No. 5098

**ORANGE COUNTY CONVENTION WEST BUILDING GREASE TRAP REPLACEMENT**



**Revisions**

No.	Date	Description

MPE PROJ#: 2014-140

Designed By: RD

Drawn By: RD

Checked By: BWP

Issue Date: 06/29/15

Drawing Scale: 1/8"=1'-0"

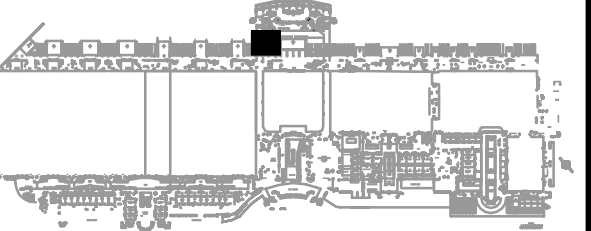
Drawing Title:  
**PARTIAL SITE AND BUILDING PLAN PLUMBING**

BID DOCUMENTS

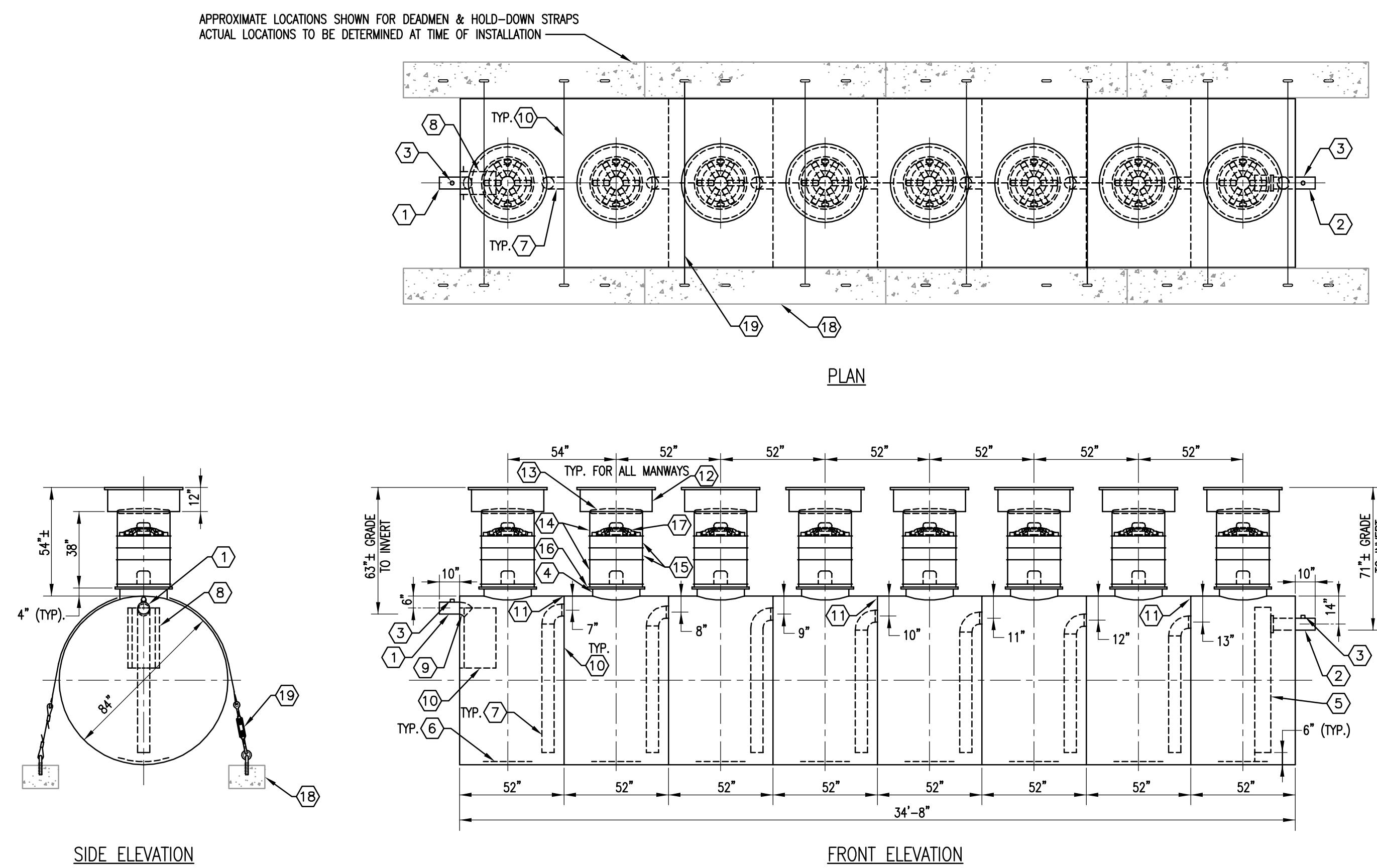
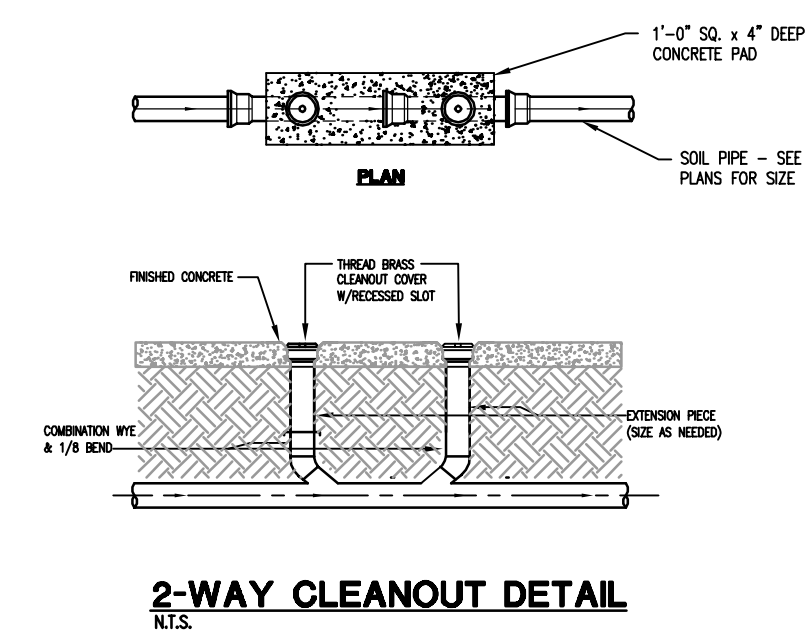
Drawing No.  
**P101**

**PARTIAL SITE AND BUILDING PLAN - PLUMBING**  
 1/8"=1'-0"  
 0 4' 8' 16'

**ORANGE COUNTY CONVENTION WEST BUILDING GREASE TRAP REPLACEMENT**

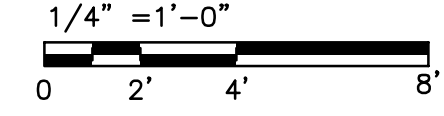


West Building Key Plan



- ① 6" SCH 40 PIPE STUB - INLET.
- ② 6" SCH 40 PIPE STUB - OUTLET.
- ③ 2" NPT HC FOR VENT.
- ④ 24" MANNWAY FOR STACKABLE RISER.
- ⑤ STEEL OUTLET DOWNCOMER BAFFLE WITH OPEN TOP FOR EFFLUENT SAMPLING.
- ⑥ 1/2" STRIKER PLATE (AT ALL MANNWAYS)
- ⑦ 6" SCH 40 TRANSFER PIPE.
- ⑧ BOLT - ON INLET DIFFUSION BAFFLE - 7 GA.
- ⑨ 6" 45° DIFFUSION ELBOW.
- ⑩ SOLID BULKHEAD - 1/2"
- ⑪ 2" OPENING FOR AIR CIRCULATION (TYPICAL).
- ⑫ 36" GRADE - LEVEL MANNWAY - SHIPPED LOOSE.
- ⑬ 24" PVC COVER.
- ⑭ 24" x 12" STACKABLE RISER - ALL STACKABLE RISER COMPONENTS ARE PRE-ASSEMBLED AND COMPLETE MANNWAY RISER IS SHIPPED LOOSE.
- ⑮ 24" x 6" STACKABLE RISER.
- ⑯ STACKABLE RISER ADAPTER RING & GASKET.
- ⑰ STACKABLE RISER SAFETY SCREEN.
- ⑱ CDA - 15 CONCRETE DEADMAN - EIGHT REQUIRED.
- ⑲ (8) POLYSTER HOLD - DOWN STRAPS.

**PASSIVE GREASE TRAP 10,000 GALLON - 8 BASIN**



**Revisions**

No.	Date	Description

MPE PROJ#: 2014-140
Designed By: RD
Drawn By: RD
Checked By: BWP
Issue Date: 06/29/15
Drawing Scale: 1/8"=1'-0"

Drawing Title:  
**DETAILS PLUMBING**

BID DOCUMENTS  
 Drawing No.  
**P201**

LAST SAVED BY: RDMWHE  
 LAST SAVED: 02/20/15 12:51:11 PM  
 LAST SAVED: 02/20/15 12:54:07 PM  
 ORIGINATOR: 02/20/15 12:54:07 PM  
 MPE PROJ#: 2014-140\_CDDC West Building Grease Trap Replacement (02/20/15) P201.dwg  
 PLOT DATE: 02/20/15 11:17:24 AM  
 MATERN PROFESSIONAL ENGINEERING