



Orange County Convention
Center - Pavement Rehab

Owner
Board of County Commissioners
201 South Rosalind Avenue
Orlando, FL 32801



JASON D. VARGAS, P.E.
LICENSE NO. 62434

ORANGE COUNTY CONVENTION CENTER PAVEMENT REHABILITATION

9800 INTERNATIONAL DRIVE
ORLANDO, FLORIDA 32819
ORANGE COUNTY PARCEL IDENTIFICATION NO. 1-24-28-7150-01-000

ORANGE COUNTY MAYOR
MS. TERESA JACOBS

DISTRICT 1 COMMISSIONER
MR. S. SCOTT BOYD

DISTRICT 2 COMMISSIONER
MR. FREDRICK BRUMMER



DISTRICT 3 COMMISSIONER
MR. JOHN MARTINEZ

DISTRICT 4 COMMISSIONER
MS. JENNIFER THOMPSON

DISTRICT 5 COMMISSIONER
MR. TED EDWARDS

DISTRICT 6 COMMISSIONER
MS. TIFFANY MOORE RUSSELL

SHEET INDEX

SURVEY

1 of 4	MAP OF TOPOGRAPHIC SURVEY
2 of 4	MAP OF TOPOGRAPHIC SURVEY
3 of 4	MAP OF TOPOGRAPHIC SURVEY
4 of 4	MAP OF TOPOGRAPHIC SURVEY

ISSUE DATE

APRIL 19, 2012
APRIL 19, 2012
APRIL 19, 2012
APRIL 19, 2012

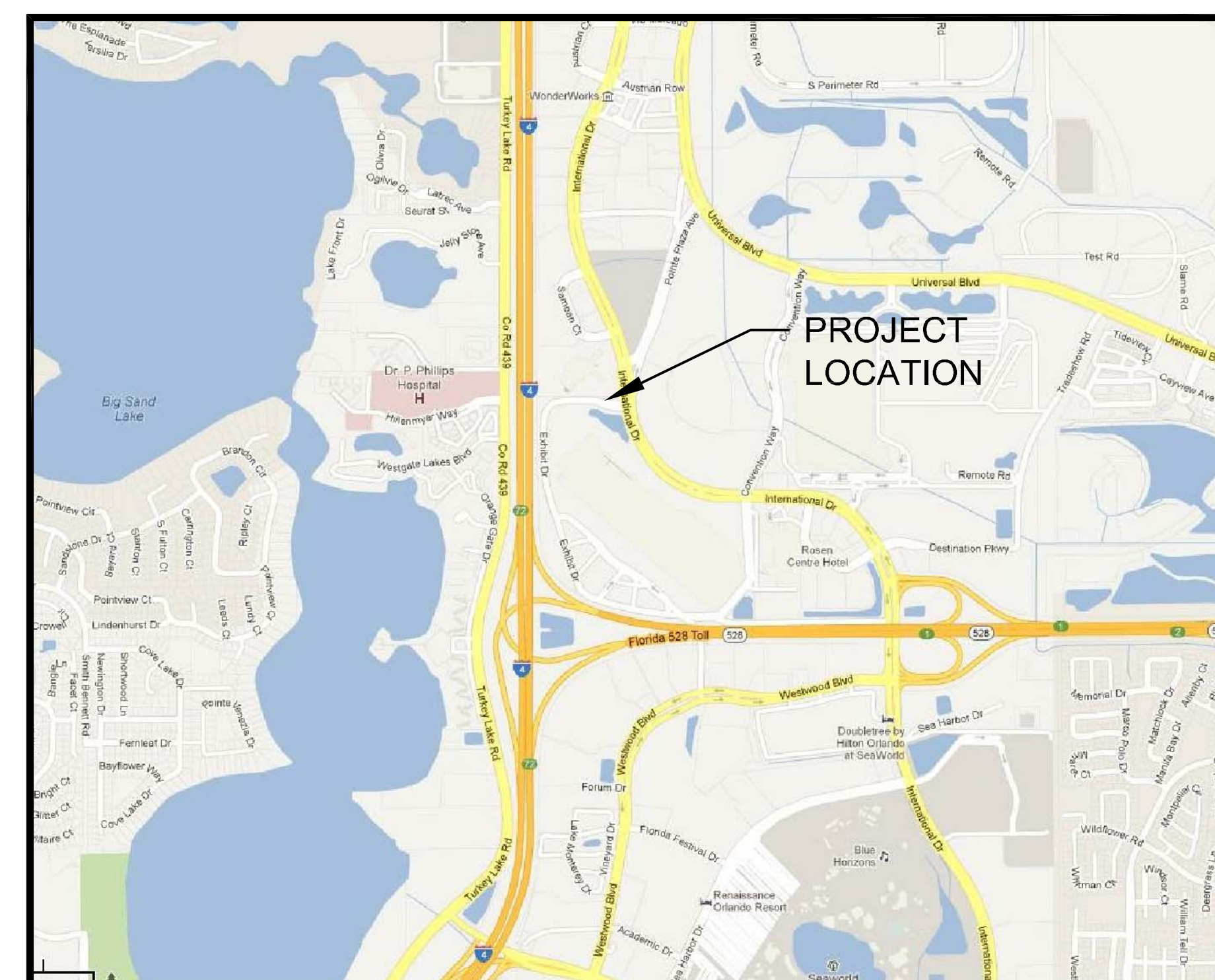
CIVIL ENGINEERING

C000	COVER SHEET AND VICINITY MAP
C001	GENERAL NOTES
C002	SUMMARY OF PAY ITEMS
C101	DEMOLITION AND EROSION PREVENTION PLAN
C102	MAINTENANCE OF TRAFFIC PLAN
C201	SITE AND GEOMETRY PLAN
C301	SIGNING AND PAVEMENT MARKING PLAN
C401	GRADING AND DRAINAGE PLAN
C601	CIVIL DETAILS
C701	DRAINAGE DETAILS

DECEMBER 11, 2012
DECEMBER 11, 2012
DECEMBER 11, 2012
DECEMBER 11, 2012
DECEMBER 11, 2012
DECEMBER 11, 2012
DECEMBER 11, 2012
DECEMBER 11, 2012
DECEMBER 11, 2012
DECEMBER 11, 2012

LEGAL DESCRIPTION:

PART OF SECTION 1, TOWNSHIP 24 SOUTH, RANGE 28 EAST, ORANGE COUNTY, FLORIDA.



VICINITY MAP
N.T.S.

No.	By	Date	Revision
-----	----	------	----------

No.	By	Date	Issued for
-----	----	------	------------

COVER SHEET AND
VICINITY MAP

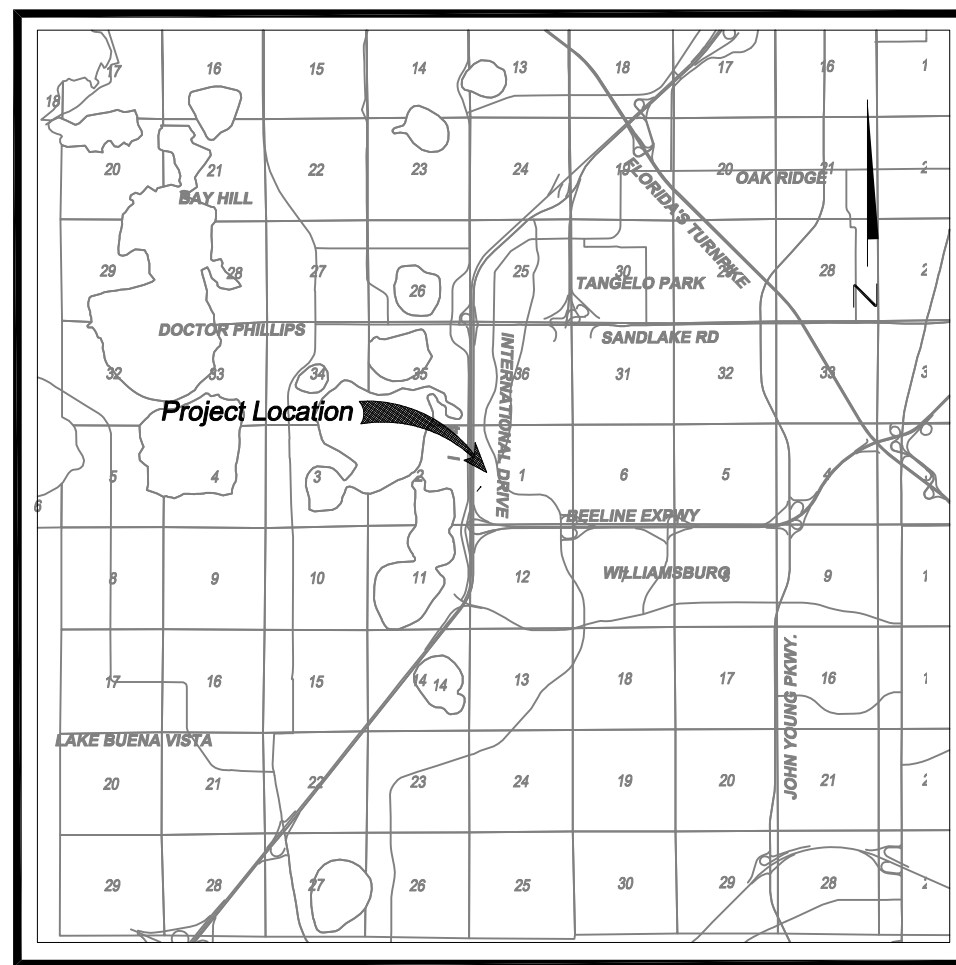
Sheet Title

Job No.	09ORA.CON-CON
Date	12/11/2012
Drawn	RLA
Checked	JDV
Scale	N.T.S.

C000

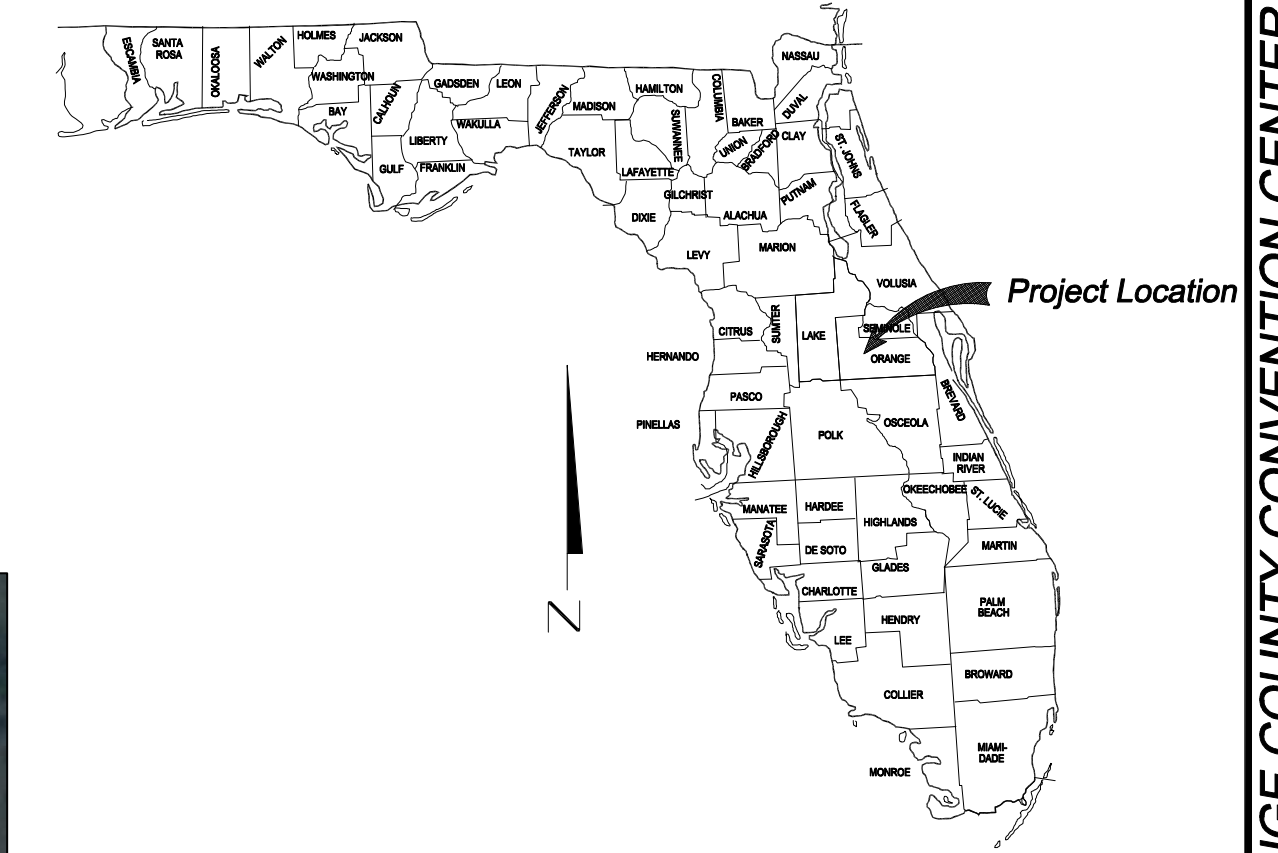
Sheet No.

Location Map
(Not to Scale)



Map of Topographic Survey of O.C.C.C Exhibit Drive Enhancements

Located in
Section 01, Township 24 South, Range 28 East
Orange County, Florida

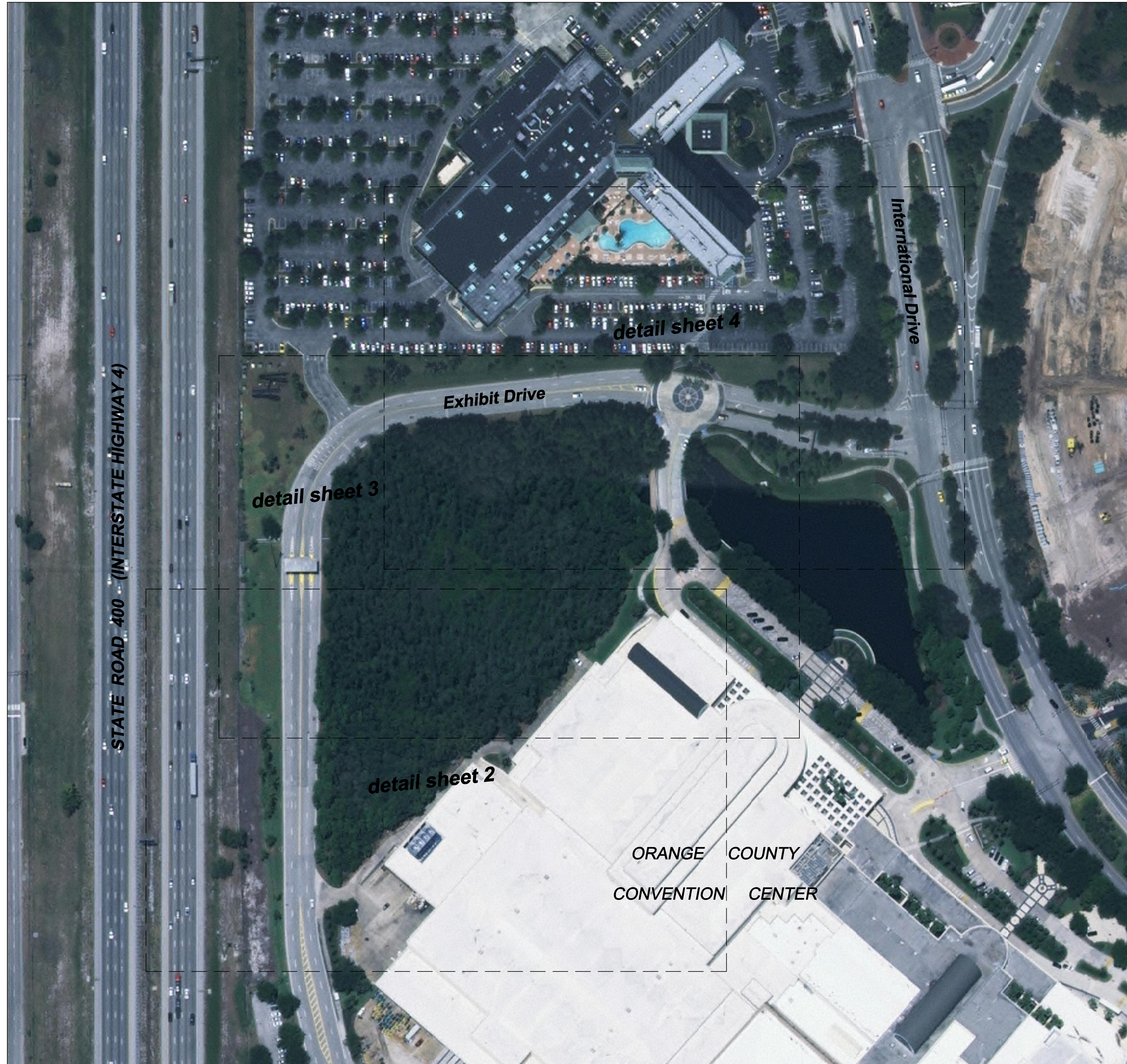


SURVEYOR'S NOTES:

- This map of Topographic Survey is not valid without the signature and the original raised seal of the signing Florida licensed Surveyor and Mapper. THIS IS NOT A BOUNDARY SURVEY.
- The purpose of this survey is to identify and map the features within the area shown hereon, as specified by the client.
- Underground improvements such as foundations and utilities were not located. All underground utility locations shown hereon are approximate and were determined from visible surface features indicating underground lines, such as manholes, valves, catch basins, water meters, flags and paint marks by others, etc. There may be additional underground improvements. Actual location, size or depth of line should be verified with the individual utility company prior to excavation or construction.
- This survey addresses the identification and the location of jurisdictional wetlands that lie within the lands surveyed, based on wetland delineation flags and Seasonal High Water Elevation (SHWE) indicators, established by Lotspeich and Associates, Inc.
- Elevations shown hereon are relative to the North American Vertical Datum of 1988 (NAVD 88), based on the following National Geodetic Survey Benchmarks:
RTE 258+INTERNATIONAL DR: 3" FLDT DISC no stamp (PID AK7234), Elevation 117.01'.
RTE 258+ORANGEWOOD BLVD: 3" FLDT DISC no stamp (PID AK7235), Elevation 115.64'.
(go to www.ngs.noaa.gov for further information)
- Horizontal datum for this survey and the coordinates shown hereon are relative to the North American Datum of 1983, 2007 Adjustment, expressed in Florida State Plane Coordinate System, Florida East Zone 901, based on Trimble Navigation Virtual Reference System wide area network real time kinematic GPS survey with a positional accuracy ± 2.5 centimeters from the nearest continuously operating geodetic reference station:
FL_HULK
N = 1440115.661
E = 515745.993
- The field data acquisition phase of this survey was completed on 04/13/2012, as documented in AMEC field book 1142.
- For purposes of clarity all spot elevations and other topographical data may not be shown hereon. This data is available in electronic format in AMEC file no. 6374.12.0566.dwg and has been furnished to the client.
- This Map of Survey is certified to: ORANGE COUNTY BOARD OF COUNTY COMMISSIONERS

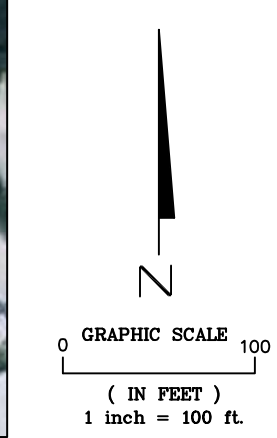
Sheet Index

Sheet	Description
1	Cover Sheet
2	Detail Sheet
3	Detail Sheet
4	Detail Sheet



LEGEND

- = Building line
- = Wetland line
- = Fence line
- = Tree line
- = Sign
- = Light Pole
- = Concrete
- = Catch Basin
- RCP = Reinforce Concrete Pipe
- PVC = Polyvinyl Chloride
- BE = Buried Electric
- FO = Fiber Optic
- INV ELEV = Invert Elevation
- WM = Water Main
- RCWM = Reclaimed Water Main
- D = Drainage Manhole
- SS = Sanitary Sewer
- FM = Force Main
- + 222.2 = Spot Elevation
- = Fire Hydrant
- SRVC = Service Box
- WPB = Wire Pull Box
- SHWE = Seasonal High Water Elevation
- = Electric Transformer or Service Box
- = Project Control Point
- = Stand Pipe
- = Gas Line Marker
- = Overhead Sign
- = Cable Television
- = Flood Light



GENERAL LOCATION MAP
(DATE OF IMAGERY: 2008)

ROBERT M. JONES
FLORIDA PROFESSIONAL SURVEYOR AND MAPPER
LICENSE NO. LS 4201

Prepared by:
amec
AMEC E&I, Inc.
75 East Amelia Street, Suite 200
Orlando, FL 32801 USA
Phone: (407) 522-7570
Fax: (407) 522-7576
Certificate of Authorization Number LB-0007932

Prepared for:

ORANGE COUNTY CONVENTION CENTER
CAPITAL PLANNING and CONSTRUCTION GROUP
P.O. Box 691509
Orlando, Florida 32869

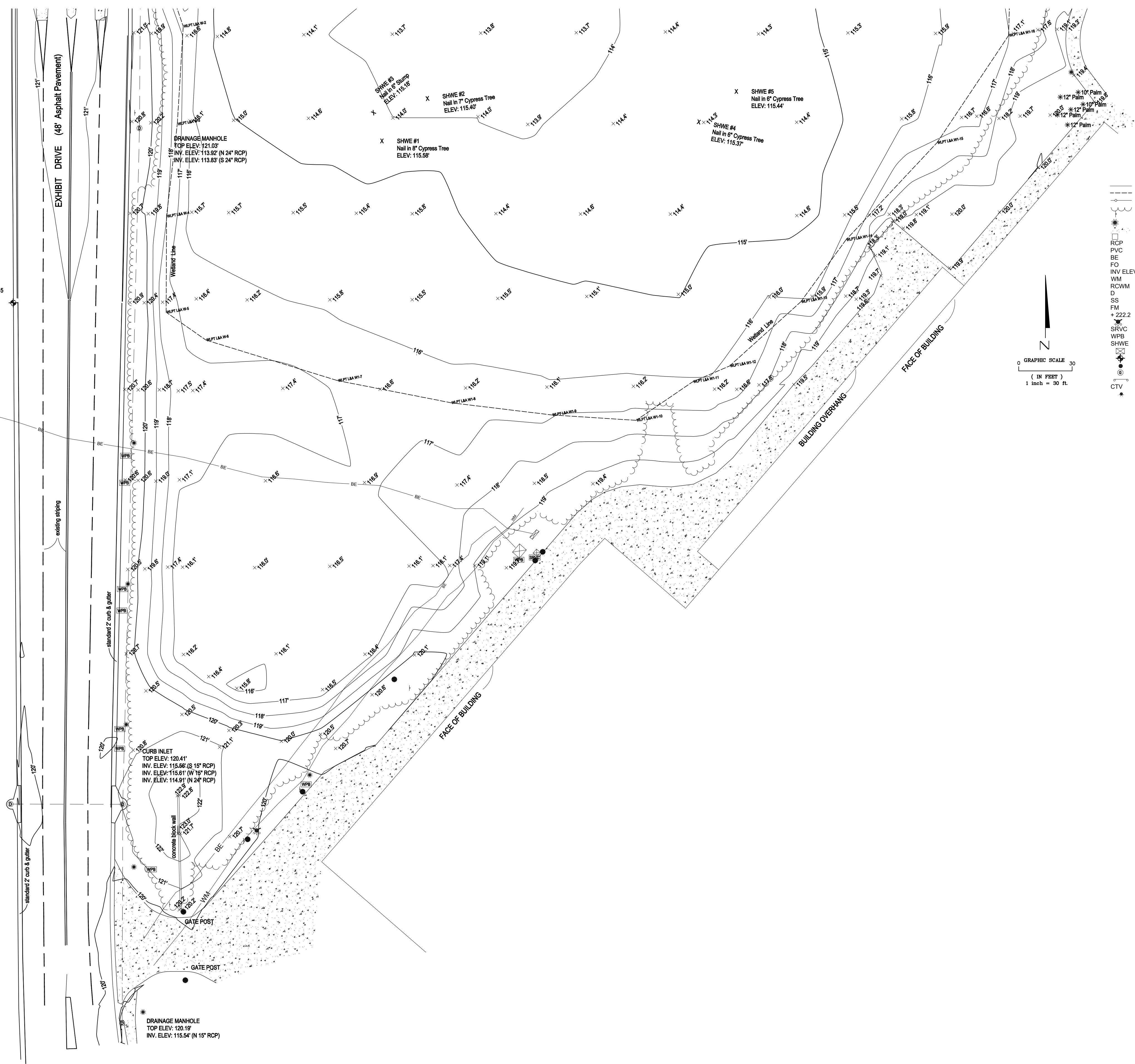
Date	Revision	Date	Revision

County: Orange County, Florida	Dwg. Date: 04/19/2012	Photo Date: n/a	TW / PEW	RMJ
Field Books: 1131 & 1142				
Office No.: 6374.12.0566				
Dwg. Name: 566_Work.dwg				

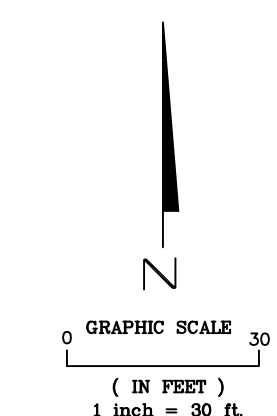
Project Title:
Map of Topographic Survey
of
O.C.C.C Exhibit Drive Enhancements
Located in
Section 01, Township 24 South, Range 28 East
Orange County, Florida

Project Control Point #15
at back of curb
Set Iron Rod & Cap
MAGNETIC REF. LB8999
ELEV. 120.85
N = 1488464.86
E = 503959.17

CURB INLET
TOP ELEV. 120.22
INV. ELEV. 115.49 (E 15" RCP)



- LEGEND**
- Building line
 - - - - - Wetland line
 - Fence line
 - Tree line
 - Sign
 - Light Pole
 - Concrete
 - Catch Basin
 - RCP = Reinforce Concrete Pipe
 - PVC = Polyvinyl Chloride
 - BE = Buried Electric
 - FO = Fiber Optic
 - INV ELEV = Invert Elevation
 - WM = Water Main
 - RCWM = Reclaimed Water Main
 - D = Drainage Manhole
 - SS = Sanitary Sewer
 - FM = Force Main
 - 222 = Spot Elevation
 - Fire Hydrant
 - SRVC = Service Box
 - WPB = Wire Pull Box
 - SHWE = Seasonal High Water Elevation
 - Electric Transformer or Service Box
 - Project Control Point
 - Stand Pipe
 - Gas Line Marker
 - Overhead Sign
 - CTV = Cable Television
 - Flood Light



Project Title: Map of Topographic Survey or O.C.C.C Exhibit Drive Enhancements Location: Section 01, Township 28 North, Range 28 East Orange County, Florida	County: Orange County, Florida	Dwg. Date: 04/19/2012	Date
	Field Books: 1131 & 1142	Photo Date: n/a	Revision
Office No.: 6374.12.0566	Drawn by: TW / PEW	Date	Revision
Dwg. Name: 566_Work.dwg	Checked by: RMJ	Date	Revision
Prepared by:	AMEC E&I, Inc. 73 East Amelia Street, Suite 200 Orlando, FL 32801 USA Phone: (407) 522-7570 Fax: (407) 522-7576 Certificate of Authorization Number LB-0007932	Sheet No.	2 of 4

Last Day in Field: 04/13/2012

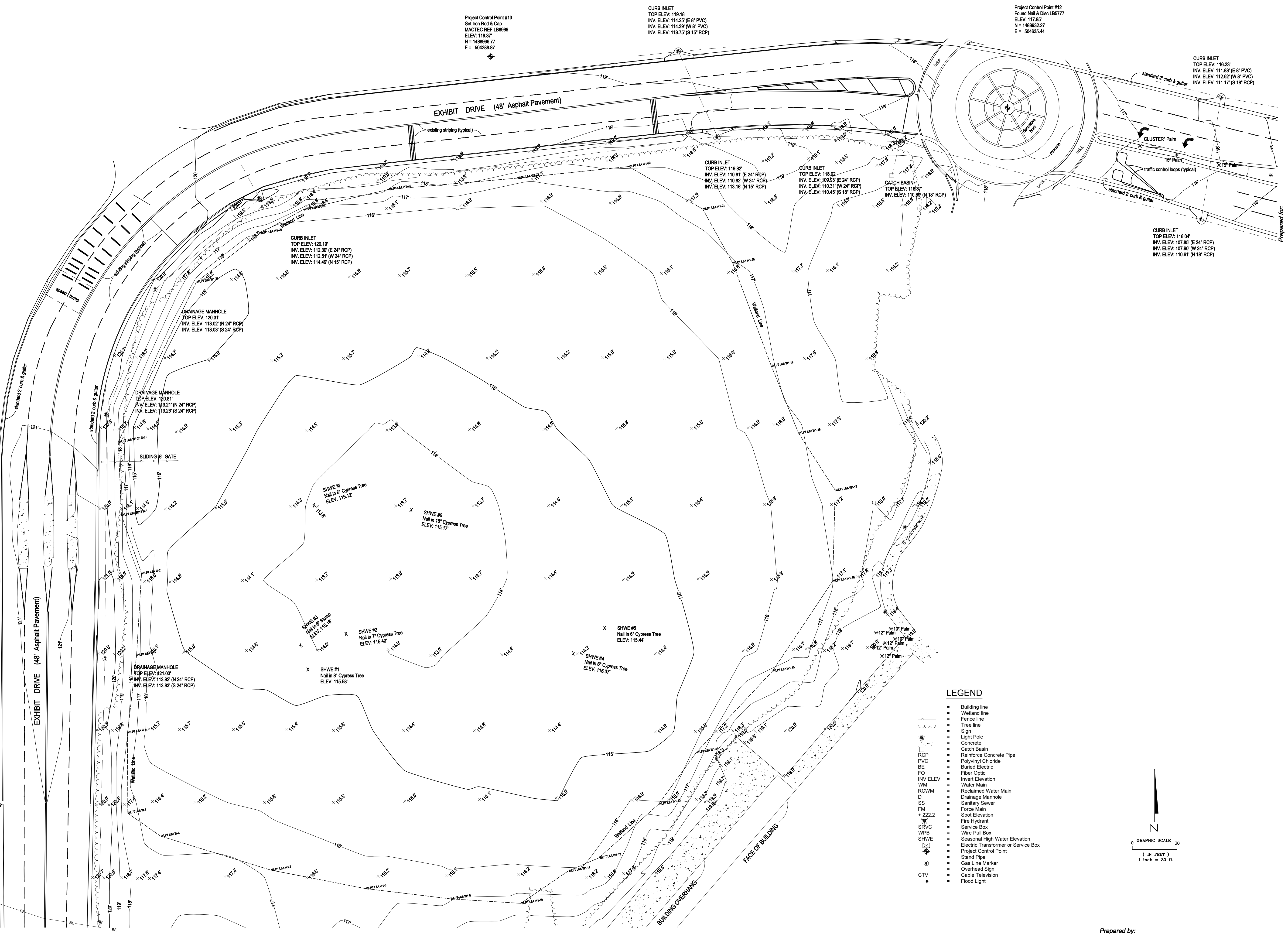
Project Control Point #14
Set Iron Rod & Cap
MACTEC REF LB9969
ELEV: 121.48
N = 148856.91
E = 503956.83

Project Control Point #13
Set Iron Rod & Cap
MACTEC REF LB9969
ELEV: 119.37
N = 148596.77
E = 504286.87

CURB INLET
TOP ELEV: 119.18'
INV. ELEV: 114.25' (E 8" PVC)
INV. ELEV: 114.35' (W 8" PVC)
INV. ELEV: 113.70' (S 18" RCP)

Project Control Point #12
Found Nail & Disc LB5777
ELEV: 117.85'
N = 148832.27
E = 504635.44

Project Control Point #15
Set Iron Rod & Cap
MACTEC REF LB9969
ELEV: 120.85
N = 1488464.96
E = 503959.17



ORANGE COUNTY CONVENTION CENTER
CAPITAL PLANNING and CONSTRUCTION GROUP
P.O. Box 691509
Orlando, Florida 32689

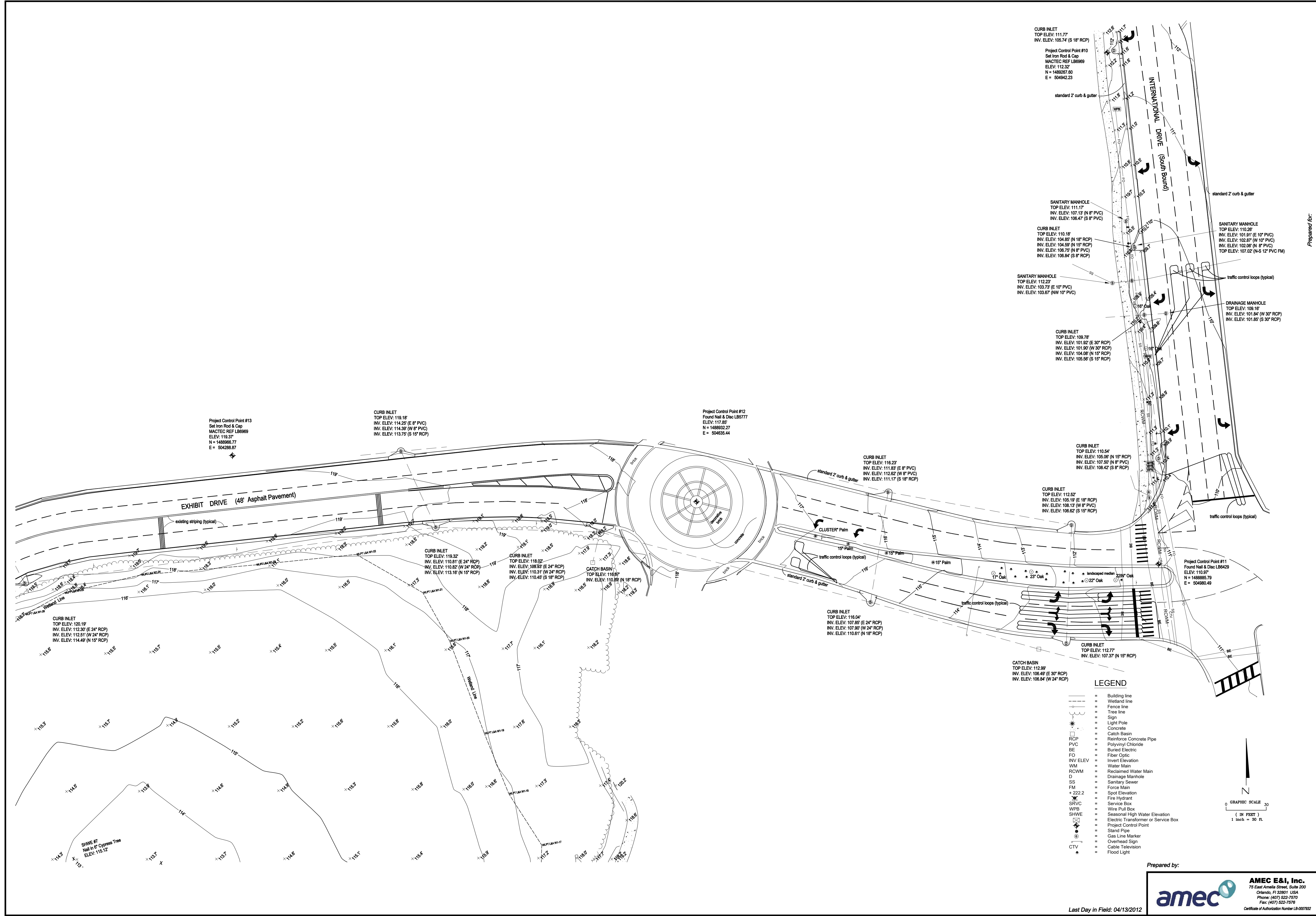
Date	Revision	Date	Revision	Dwg. Date	Photo Date	Drawn by	Checked by
				04/19/2012	n/a	TW/PEW	RMJ

Project Title: Map of Topographic Survey
or
O.C.C.C Exhibit Drive Enhancements
Location: Exhibit Drive, Range 28 East
Section 01, Township 28 North, Range 28 East
Orange County, Florida

Prepared by:

amec **AMEC E&I, Inc.**
75 East Amelia Street, Suite 200
Orlando, FL 32801 USA
Phone: (407) 522-7570
Fax: (407) 522-7576
Certificate of Authorization Number LB-0007932

Last Day in Field: 04/13/2012



CURB INLET
 TOP ELEV: 111.77
 INV. ELEV: 105.74' (S 18" RCP)

Project Control Point #10
 Set Iron Rod & Cap
 MACTEC REF LB6969
 ELEV: 112.32
 N = 1489267.60
 E = 504942.23

standard 2' curb & gutter

INTERNATIONAL DRIVE (South Bound)

standard 2' curb & gutter

SANITARY MANHOLE
 TOP ELEV: 111.17
 INV. ELEV: 107.13' (N 8" PVC)
 INV. ELEV: 106.47' (S 8" PVC)

CURB INLET
 TOP ELEV: 110.18
 INV. ELEV: 104.85' (N 18" RCP)
 INV. ELEV: 104.59' (N 15" RCP)
 INV. ELEV: 106.75' (N 8" RCP)
 INV. ELEV: 106.84' (S 8" RCP)

SANITARY MANHOLE
 TOP ELEV: 110.26
 INV. ELEV: 101.91' (E 10" PVC)
 INV. ELEV: 102.87' (W 10" PVC)
 INV. ELEV: 102.06' (N 8" PVC)
 TOP ELEV: 107.02' (N-S 12" PVC FM)

SANITARY MANHOLE
 TOP ELEV: 112.23
 INV. ELEV: 103.73' (E 10" PVC)
 INV. ELEV: 103.67' (NW 10" PVC)

traffic control loops (typical)

DRAINAGE MANHOLE
 TOP ELEV: 109.16
 INV. ELEV: 101.84' (W 30" RCP)
 INV. ELEV: 101.85' (S 30" RCP)

CURB INLET
 TOP ELEV: 109.78
 INV. ELEV: 101.92' (E 30" RCP)
 INV. ELEV: 101.90' (W 30" RCP)
 INV. ELEV: 104.98' (N 15" RCP)
 INV. ELEV: 105.58' (S 15" RCP)

CURB INLET
 TOP ELEV: 110.54
 INV. ELEV: 105.08' (N 15" RCP)
 INV. ELEV: 107.50' (N 8" PVC)
 INV. ELEV: 108.42' (S 8" RCP)

CURB INLET
 TOP ELEV: 112.52
 INV. ELEV: 105.19' (E 18" RCP)
 INV. ELEV: 108.13' (W 8" PVC)
 INV. ELEV: 106.62' (S 15" RCP)

traffic control loops (typical)

CURB INLET
 TOP ELEV: 118.18
 INV. ELEV: 114.25' (E 8" PVC)
 INV. ELEV: 114.35' (W 9" PVC)
 INV. ELEV: 113.75' (S 15" RCP)

Project Control Point #12
 Found Nail & Disc LB5777
 ELEV: 117.85
 N = 1488932.27
 E = 504635.44

CURB INLET
 TOP ELEV: 116.23
 INV. ELEV: 104.85' (N 18" RCP)
 INV. ELEV: 107.50' (N 8" PVC)
 INV. ELEV: 111.17' (S 18" RCP)

CURB INLET
 TOP ELEV: 112.52
 INV. ELEV: 105.19' (E 18" RCP)
 INV. ELEV: 108.13' (W 8" PVC)
 INV. ELEV: 106.62' (S 15" RCP)

CURB INLET
 TOP ELEV: 116.94
 INV. ELEV: 107.85' (E 24" RCP)
 INV. ELEV: 107.90' (W 24" RCP)
 INV. ELEV: 110.61' (N 18" RCP)

CATCH BASIN
 TOP ELEV: 116.87
 INV. ELEV: 110.89' (N 18" RCP)

CURB INLET
 TOP ELEV: 118.02
 INV. ELEV: 109.93' (E 24" RCP)
 INV. ELEV: 110.31' (W 24" RCP)
 INV. ELEV: 110.40' (S 18" RCP)

CURB INLET
 TOP ELEV: 119.32
 INV. ELEV: 110.81' (E 24" RCP)
 INV. ELEV: 113.16' (N 15" RCP)

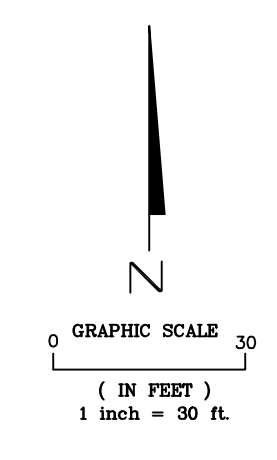
CURB INLET
 TOP ELEV: 120.19
 INV. ELEV: 112.30' (E 24" RCP)
 INV. ELEV: 112.51' (W 24" RCP)
 INV. ELEV: 114.49' (N 15" RCP)

Project Control Point #11
 Found Nail & Disc LB6429
 ELEV: 110.97
 N = 1488965.79
 E = 504980.49

CATCH BASIN
 TOP ELEV: 112.99
 INV. ELEV: 106.49' (E 30" RCP)
 INV. ELEV: 106.84' (W 24" RCP)

LEGEND

- Building line
- - - Wetland line
- - - Fence line
- - - Tree line
- ⊙ Sign
- ⊙ Light Pole
- ⊙ Concrete
- ⊙ Catch Basin
- ⊙ Reinforce Concrete Pipe
- ⊙ PVC
- ⊙ Polyvinyl Chloride
- ⊙ BE Buried Electric
- ⊙ FO Fiber Optic
- ⊙ INV ELEV Invert Elevation
- ⊙ WM Water Main
- ⊙ RCWM Reclaimed Water Main
- ⊙ D Drainage Manhole
- ⊙ SS Sanitary Sewer
- ⊙ FM Force Main
- ⊙ + 222.2 Spot Elevation
- ⊙ SRVC Fire Hydrant
- ⊙ WPB Service Box
- ⊙ Wire Pull Box
- ⊙ SHWE Seasonal High Water Elevation
- ⊙ Electric Transformer or Service Box
- ⊙ Stand Pipe
- ⊙ Project Control Point
- ⊙ Overhead Sign
- ⊙ Gas Line Marker
- ⊙ Cable Television
- ⊙ CTV Flood Light



ORANGE COUNTY CONVENTION CENTER CAPITAL PLANNING and CONSTRUCTION GROUP P.O. Box 691509 Orlando, Florida 32669	
Prepared for:	
County: Orange County, Florida	Dwg. Date: 04/19/2012
Field Books: 1131 & 1142	Photo Date: n/a
Office No: 6374.12.0566	Drawn by: TW/PEW
Dwg. Name: 566_Work.dwg	Checked by: RMJ
Project Title: Map of Topographic Survey of O.C.C.C Exhibit Drive Enhancements	Location: Exhibit Drive, Range 28 East, Orange County, Florida
Sheet No:	4 of 4

Prepared by:

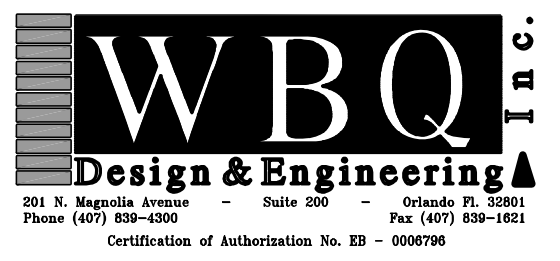
AMEC E&I, Inc.
 73 East Amelia Street, Suite 200
 Orlando, FL 32801 USA
 Phone: (407) 522-7570
 Fax: (407) 522-7576
 Certificate of Authorization Number LB-0007932

Last Day in Field: 04/13/2012



**Orange County Convention
Center - Pavement Rehab**

Owner
Board of County Commissioners
201 South Rosalind Avenue
Orlando, FL 32801



JASON D. VARGAS, P.E. DATE
LICENSE NO. 62454

SUMMARY OF PAY ITEMS

PAY ITEM NO.	ITEM DESCRIPTION	UNITS	QUANTITY
ROADWAY & DRAINAGE			
0101-1	MOBILIZATION AND DEMOBILIZATION	LS	1
0102-1	MAINTENANCE OF TRAFFIC / UTILITIES	LS	1
0104-13	SEDIMENT BARRIER, SILT FENCING AND INLET PROTECTION	LS	1
0110-1	CLEARING AND GRUBBING	LS	1
0120-4	REGULAR EXCAVATION	LS	1
0285-7-11	6" BASE COURSE MATERIAL (CRUSHED CONCRETE, 300 PSI)	SY	1980
0350-2-3	CEMENT CONCRETE PAVEMENT, REINFORCED, 8" (5,000 PSI)	SY	1980
0440-1-30	UNDERDRAIN, TYPE I	LF	589
0520-1-10	CURB & GUTTER CONCRETE (TYPE F)	LF	1227
0520-4	SPECIAL CONCRETE GUTTER (DROP CURB)	LF	48
0523-1	PATTERNED/TEXTURED PAVEMENT (STAMPED CONCRETE), VEHICULAR AREAS	SY	103
0575-1	SODDING (MATCH EXISTING)	SY	300
0660-1	VEHICLE DETECTOR ASSEMBLY, REPLACE	EA	8
0711-11-111	THERMOPLASTIC TRAFFIC STRIPE, 6" SOLID WHITE	LF	275
0711-11-125	THERMOPLASTIC TRAFFIC STRIPE, 24" SOLID WHITE	LF	37
0711-11-131	THERMOPLASTIC TRAFFIC STRIPE, 6" SKIP WHITE	LF	302
0711-11-170	THERMOPLASTIC TRAFFIC ARROW - STANDARD WHITE	EA	8
0900-1	AS-BUILT PLANS	LS	1
0900-2	INDEMNIFICATION	LS	1

No. By Date Revision

No. By Date Issued for

**SUMMARY OF PAY
ITEMS**

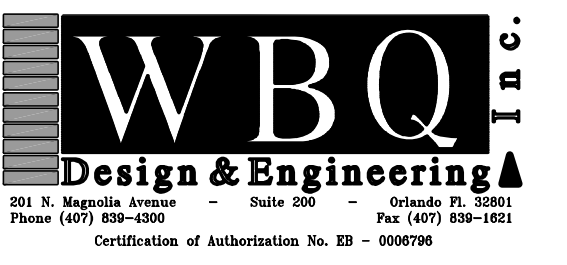
Sheet Title
Job No. 090RA.CON-CON
Date 12/11/2012
Drawn RKR
Checked JDV
Scale N.T.S.

C002

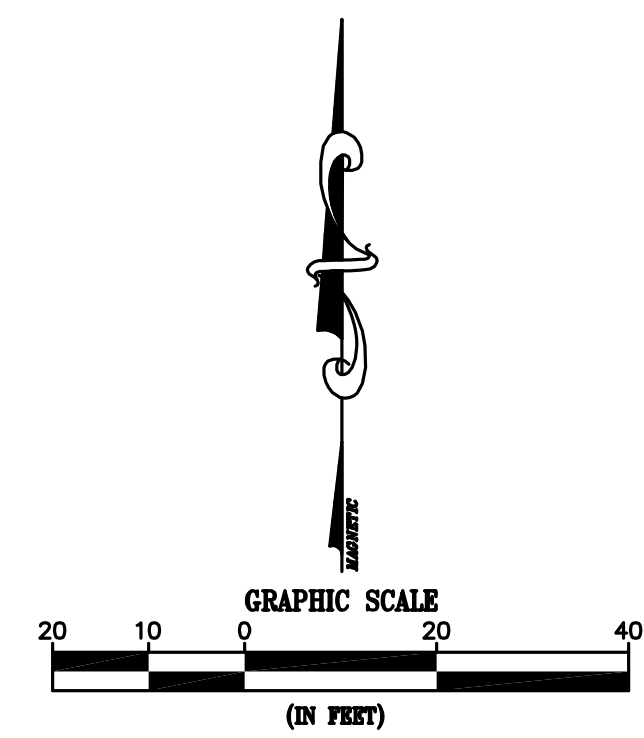
Sheet No.

Orange County Convention
Center - Pavement Rehab

Owner
Board of County Commissioners
201 South Rosalind Avenue
Orlando, FL 32801

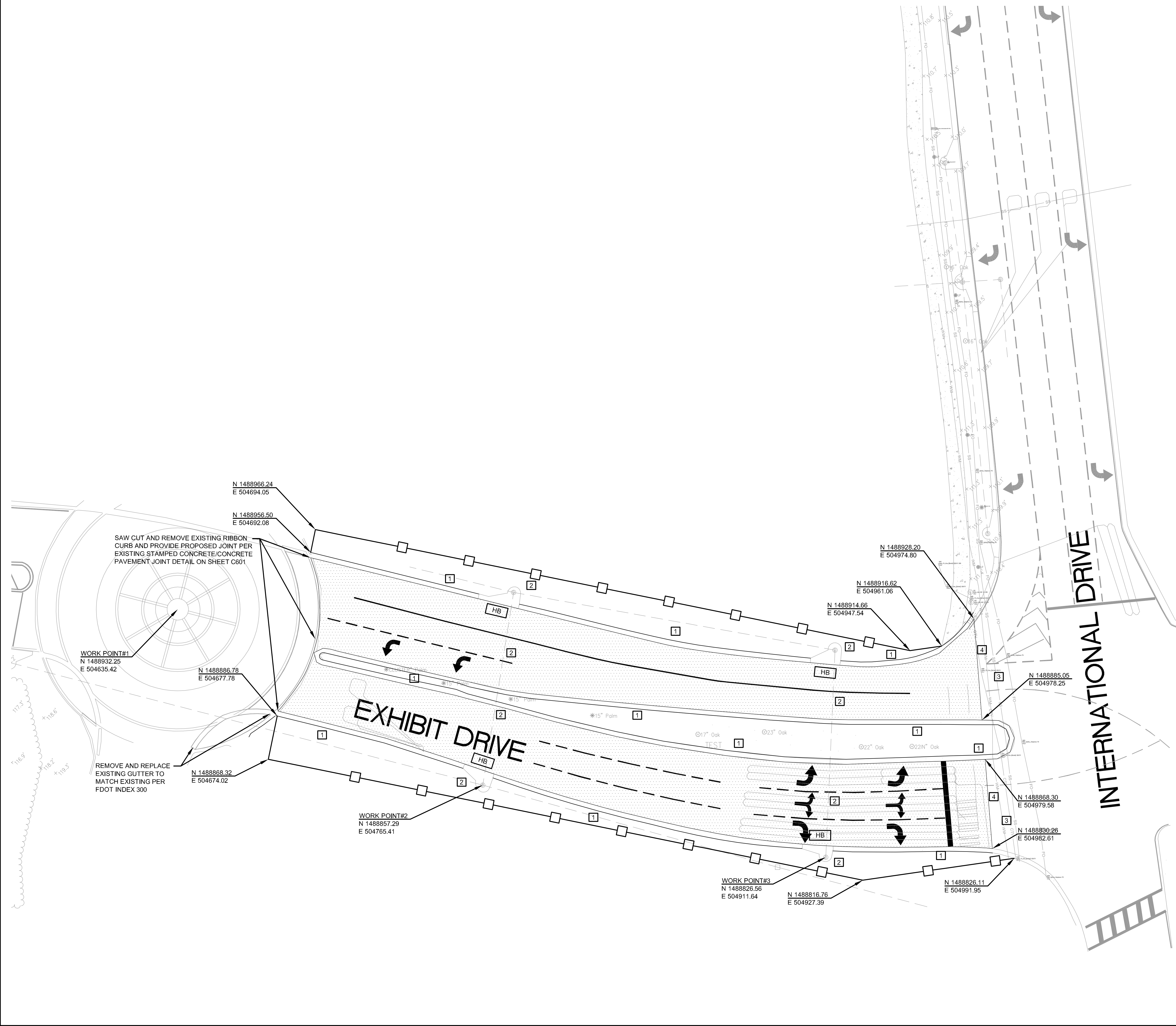


JASON D. VARGAS, P.E. DATE
LICENSE NO. 62434



LEGEND

- SILT FENCE
- LIMITS OF PAVEMENT DEMOLITION, ASPHALT SURFACE AND BASE COURSE MATERIAL
- SYNTHETIC HAY BALES (REFER TO SHEET C700 FOR EROSION CONTROL DETAILS)
- EXISTING TYPE F CURB TO BE REMOVED AND REPLACED
- EXISTING STORM TO REMAIN.
- EXISTING UTILITIES TO REMAIN. CONTRACTOR SHALL COORDINATE RELOCATION OF EXISTING UTILITIES WITH UTILITY OWNERS TO AVOID CONFLICTS WITH PROPOSED IMPROVEMENTS.
- SAW CUT EXISTING ASPHALT AND BASE COURSE MATERIAL TO PROVIDE A SMOOTH, EVEN JOINT WITH NEW CONCRETE PAVEMENT

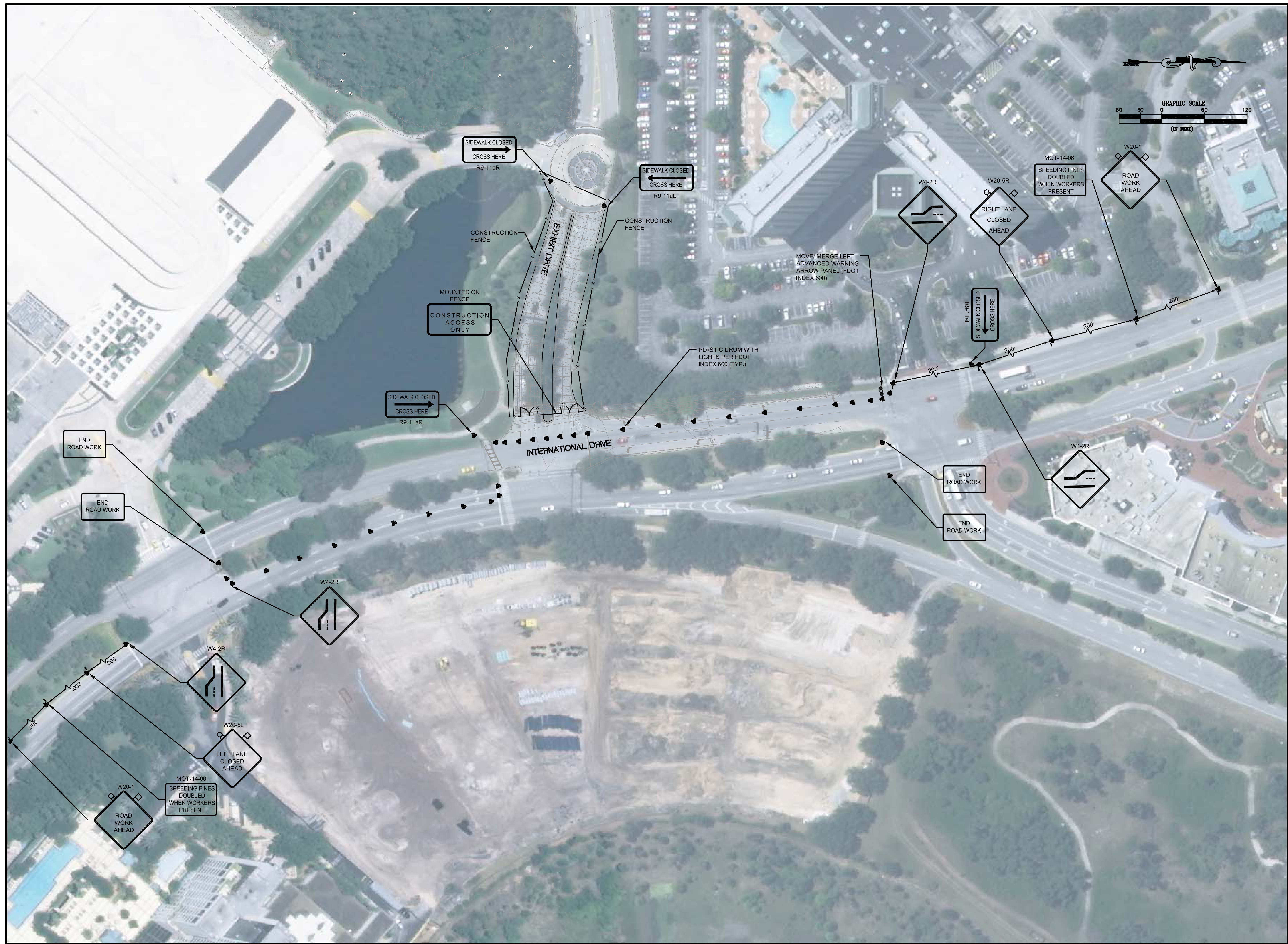


No.	By	Date	Revision

No.	By	Date	Issued for

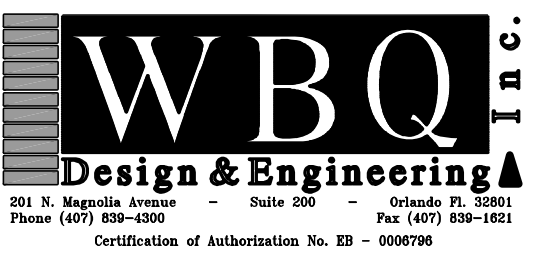
DEMOLITION AND
EROSION PREVENTION
PLAN

Sheet Title	Job No.	Date	Drawn	Checked	Scale
	09ORA.CON-CON	12/11/2012	DRV	JDV	1"=20'



Orange County Convention
Center - Pavement Rehab

Owner
Board of County Commissioners
201 South Rosalind Avenue
Orlando, FL 32801



JASON D. VARGAS, P.E.
LICENSE NO. 62434

DATE

No.	By	Date	Revision

No.	By	Date	Issued for

MAINTENANCE OF
TRAFFIC PLAN

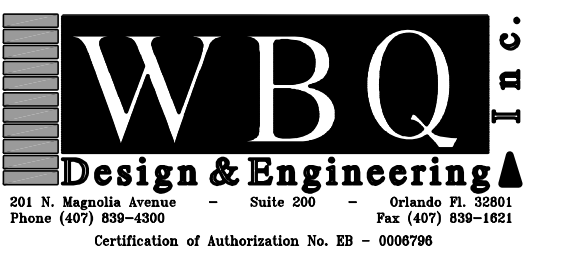
Sheet Title	Job No.	Date	Drawn	Checked	Scale
	09ORA.CON-CON	12/11/2012	DRV	JDV	1"=20'

C102

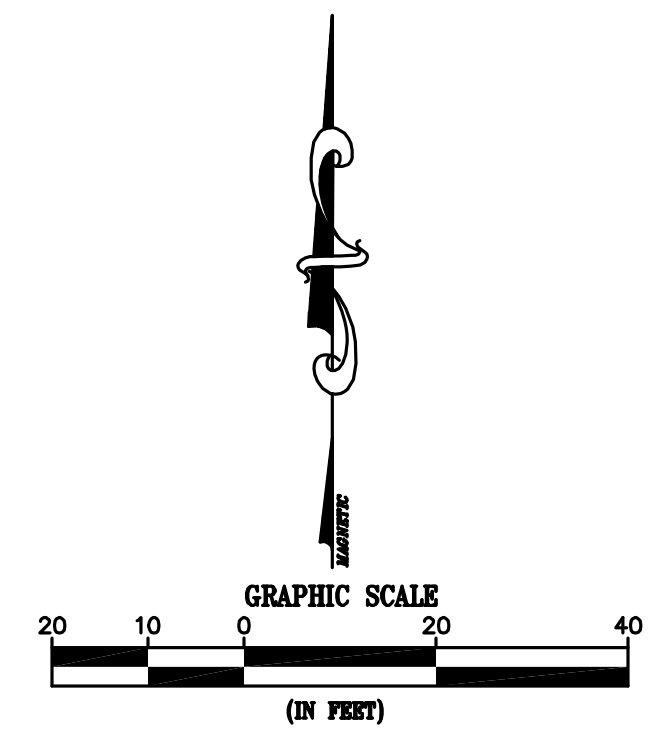
Sheet No.

Orange County Convention
Center - Pavement Rehab

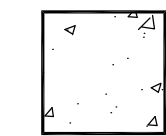


Owner
Board of County Commissioners
201 South Rosalind Avenue
Orlando, FL 32801

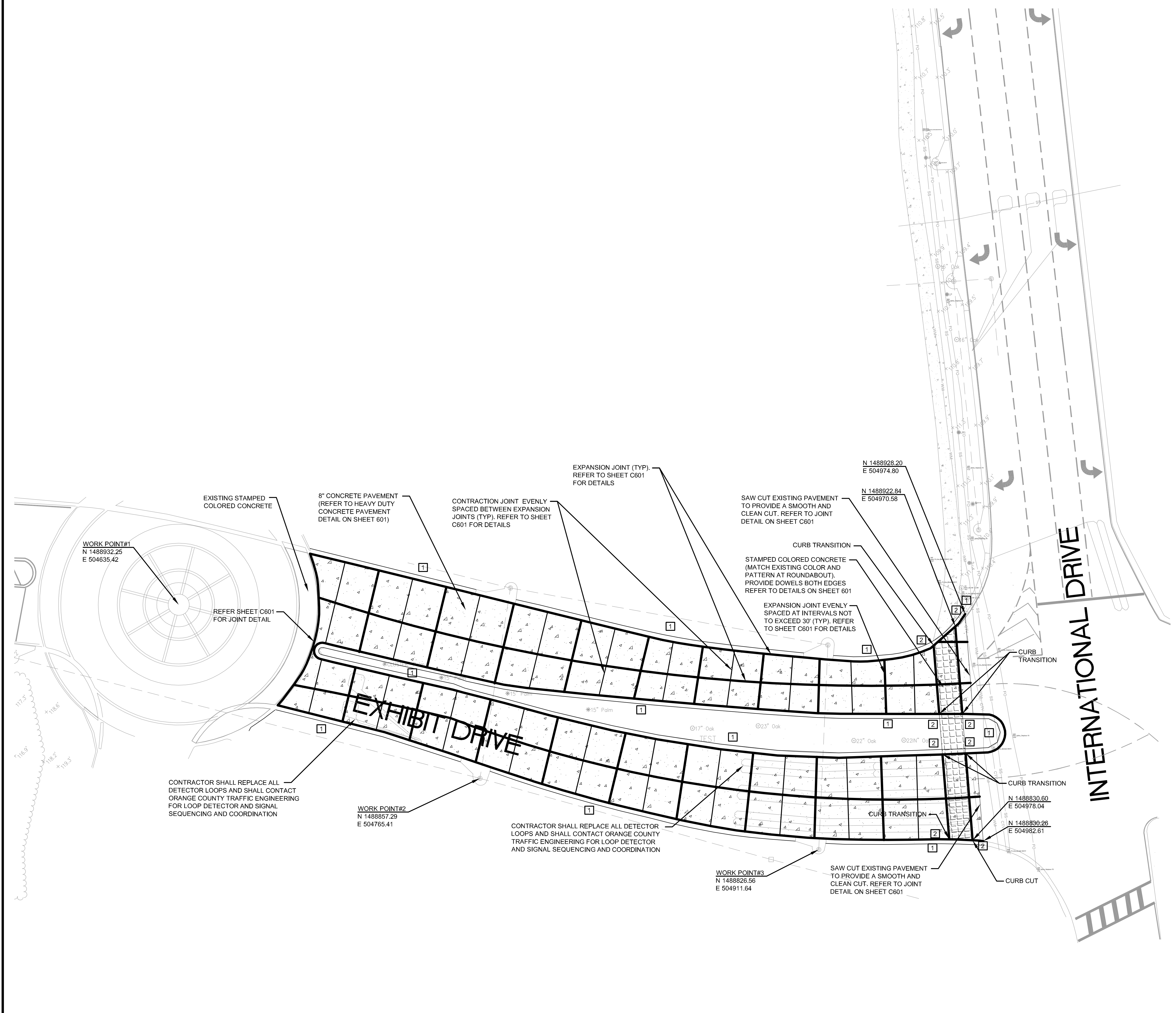


JASON D. VARGAS, P.E. DATE
LICENSE NO. 62454



LEGEND

-  HEAVY DUTY CONCRETE PAVEMENT
(REFER TO SHEET C601 FOR DETAIL)
-  EXISTING TYPE F CURB AND
GUTTER TO BE REMOVED AND
REPLACED WITH NEW TYPE F
CURB AND GUTTER TO MATCH
EXISTING GRADE AND ALIGNMENT
-  3' CURB TRANSITION
(MATCH TO EXISTING)



No.	By	Date	Revision

**SITE AND GEOMETRY
PLAN**

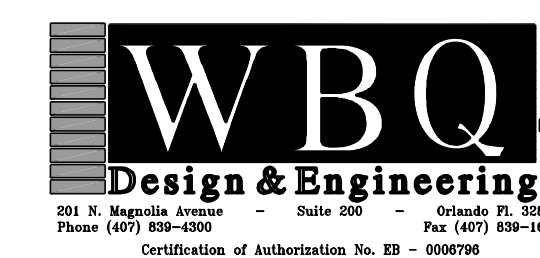
Sheet Title	
Job No.	09ORA.CON-CON
Date	12/11/2012
Drawn	DRV
Checked	JDV
Scale	1"=20'

C201

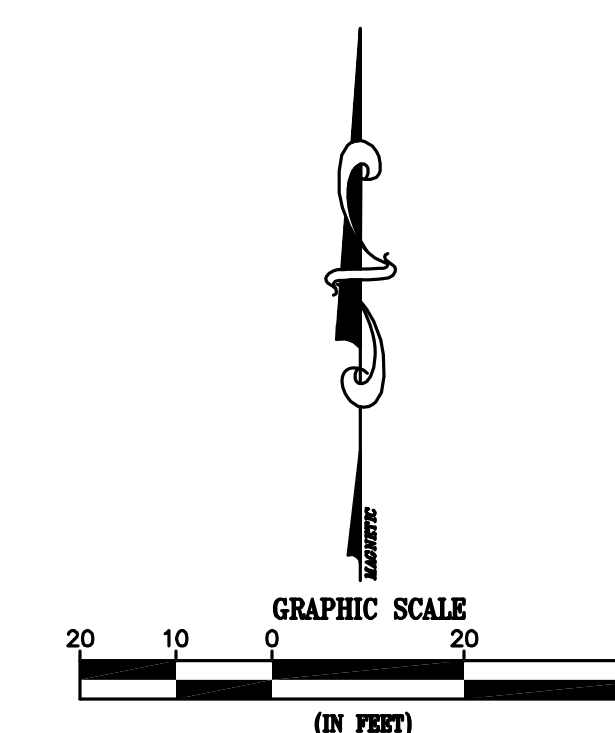
Sheet No.

Orange County Convention
Center - Pavement Rehab

Owner
Board of County Commissioners
201 South Rosalind Avenue
Orlando, FL 32801



JASON D. VARGAS, P.E. DATE
LICENSE NO. 62434



LEGEND

HEAVY DUTY CONCRETE PAVEMENT
(REFER TO SHEET C600 FOR DETAIL)

SIGNING AND MARKING NOTES

1. PAVEMENT MARKINGS SHOWN SHALL BE INSTALLED IN CONFORMANCE WITH FDOT 2013 INDEX #17346.
2. CONTRASTING BLACK SHALL BE USED IN CONJUNCTION WITH WHITE PAVEMENT MARKINGS PER FDOT INDEX #17346.

No.	By	Date	Revision

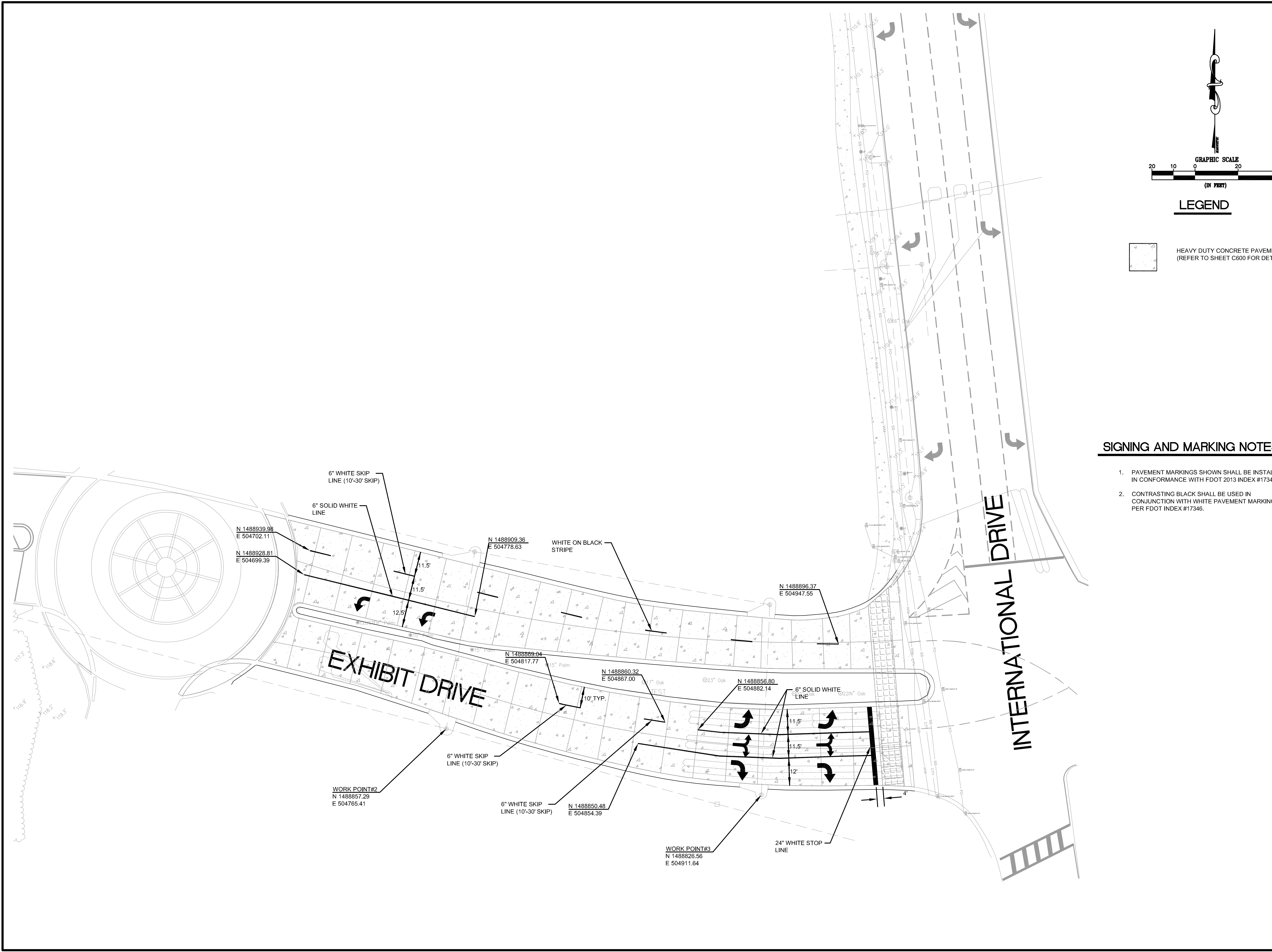
No.	By	Date	Issued for

SIGNING AND PAVEMENT MARKING PLAN

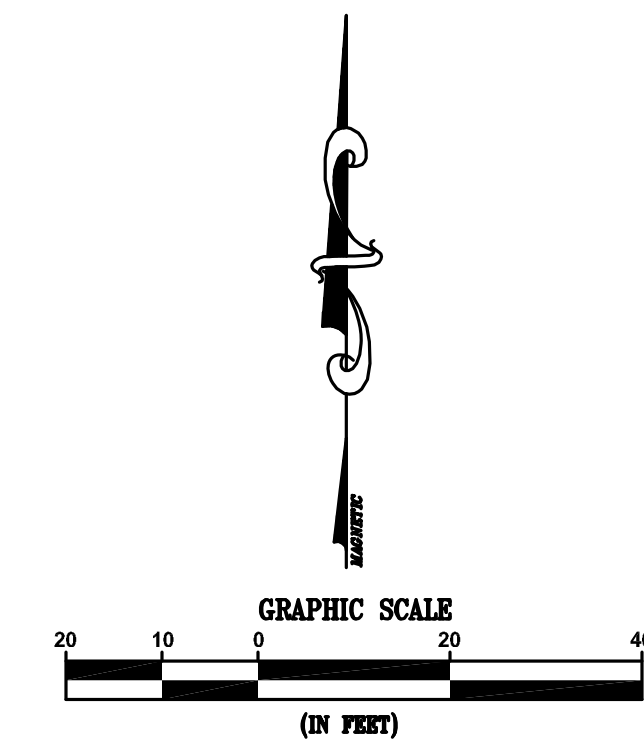
Sheet Title	Job No.	Date	Drawn	Checked	Scale
	09ORA.CON-CON	12/11/2012	DRV	JDV	1"=20'

C301

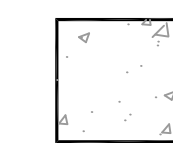
Sheet No.



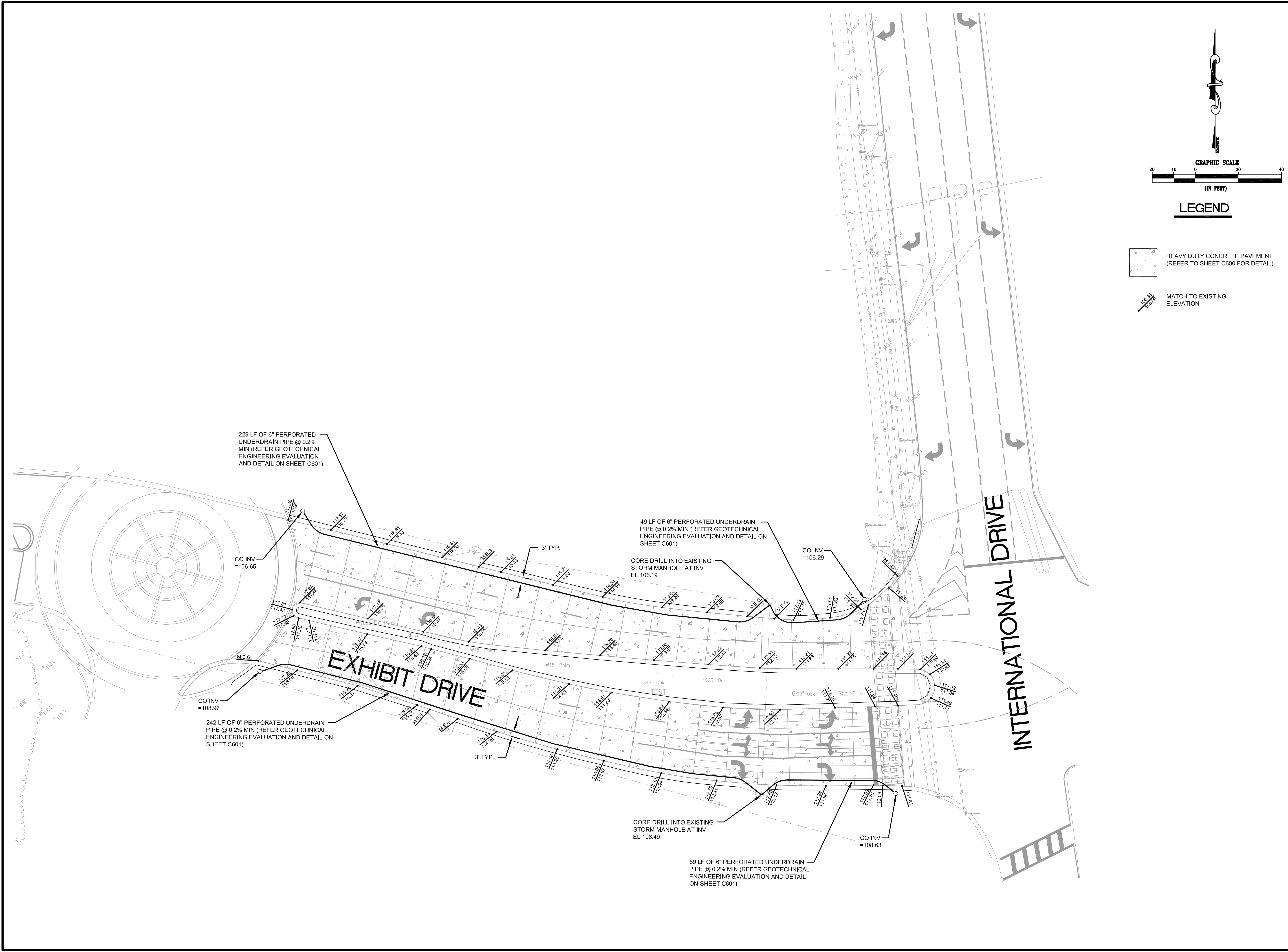
Plot Date: Dec 11, 2012 - 11:20am - C301.dwg



LEGEND

 HEAVY DUTY CONCRETE PAVEMENT
(REFER TO SHEET C600 FOR DETAIL)

 MATCH TO EXISTING ELEVATION



No.	By	Date	Revision

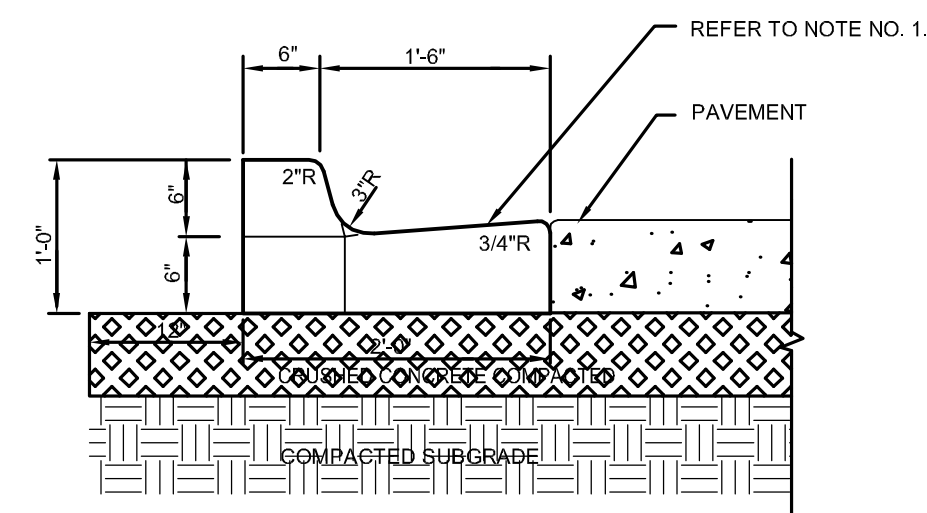
No.	By	Date	Issued for

DRAINAGE PLAN

Sheet Title	
Job No.	09ORA.CON-CON
Date	12/11/2012
Drawn	DRV
Checked	JDV
Scale	1"=20'

C401
Sheet No.

Plot Date: Dec 11, 2012 - 11:21am - C401.dwg

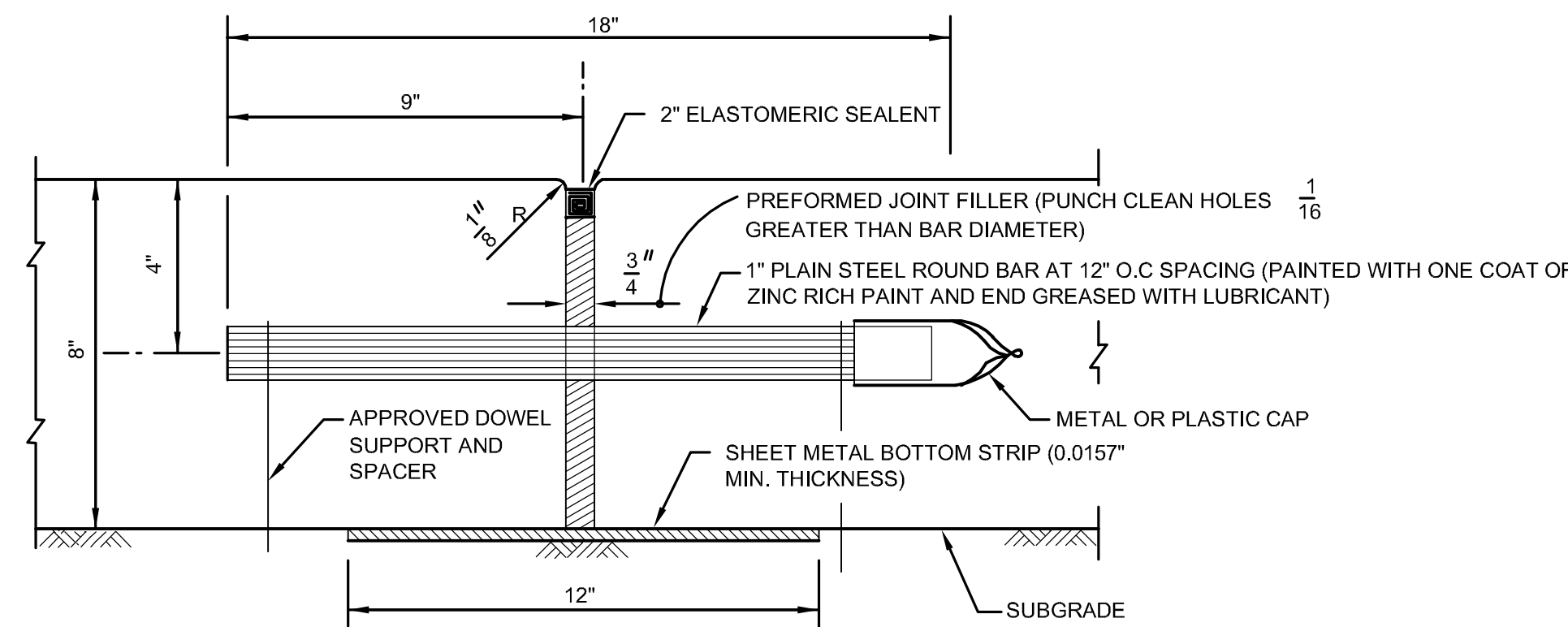


TYPE "F" CURB

1. WHEN USED ON HIGH SIDE OF ROADWAYS, THE CROSS SLOPE OF THE GUTTER SHALL MATCH THE CROSS SLOPE OF THE ADJACENT PAVEMENT. THE THICKNESS OF THE LIP SHALL BE 6", UNLESS OTHERWISE SHOWN ON PLANS.
2. SAW CUT DUMMY JOINTS AT INTERVALS OF 10 FEET EXCEPT WHERE CLOSURE REQUIRES A LESSER INTERVAL, BUT DO NOT ALLOW ANY SECTION TO BE LESS THAN 4 FEET IN LENGTH.
3. CONSTRUCT EXPANSION JOINTS AT ALL INLETS, RADIUS POINTS, AND OTHER LOCATION (IF INDICATED ON PLANS).

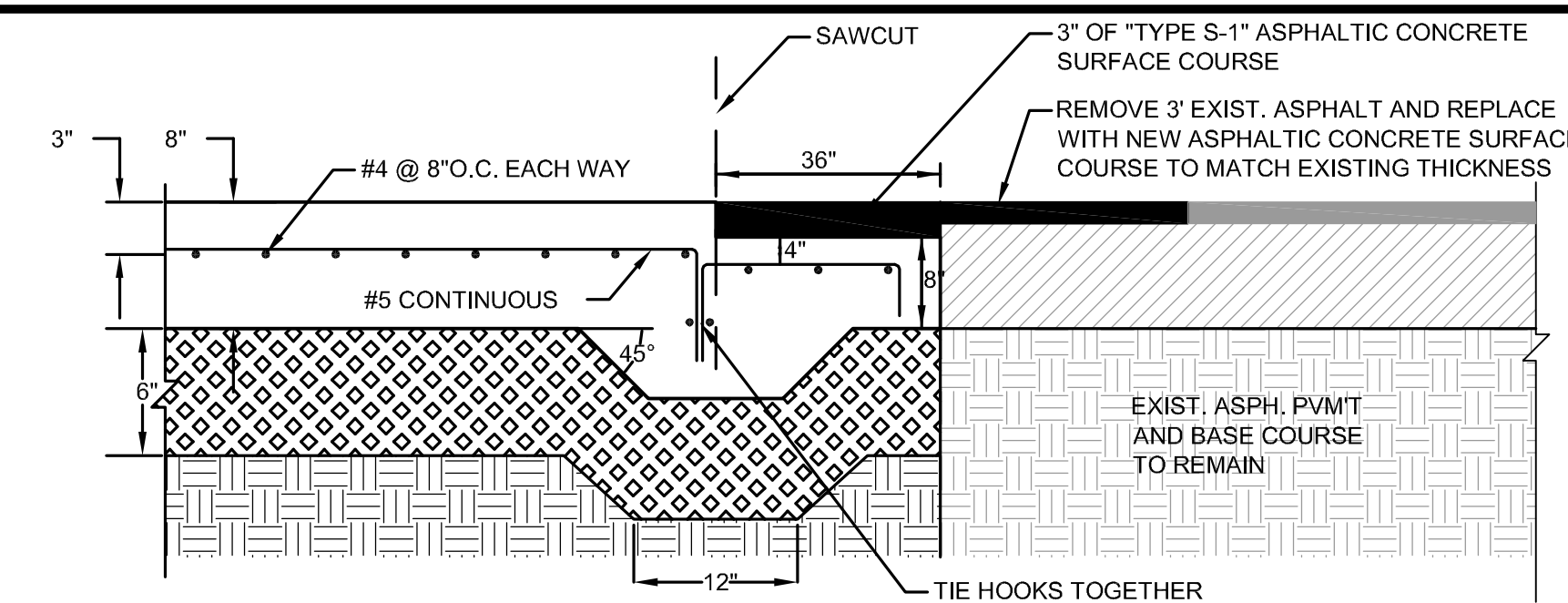
CURB DETAILS

1"=1'



HEAVY DUTY CONCRETE TRANSVERSE EXPANSION JOINT

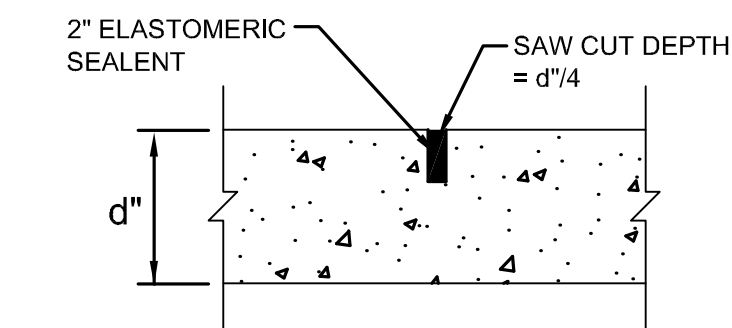
NTS (REQUIRED AT ALL EXPANSION JOINT LOCATIONS UNLESS OTHERWISE NOTED IN PLANS)



CONCRETE PAVEMENT / ASPHALT PAVEMENT JOINT DETAIL

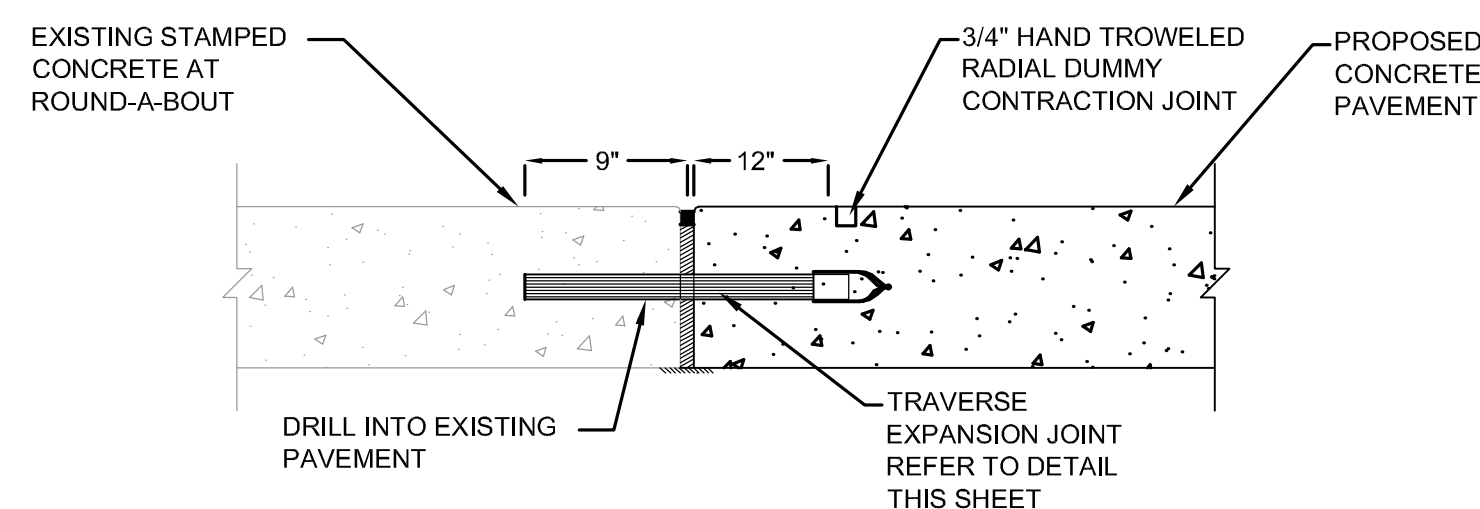
NTS

NOTE:
PROVIDE A FULL 1/2" EXPANSION JOINT AND A SAW CUT OR FORMED DUMMY CONTRACTION JOINTS AS SHOWN ON SHEET C201



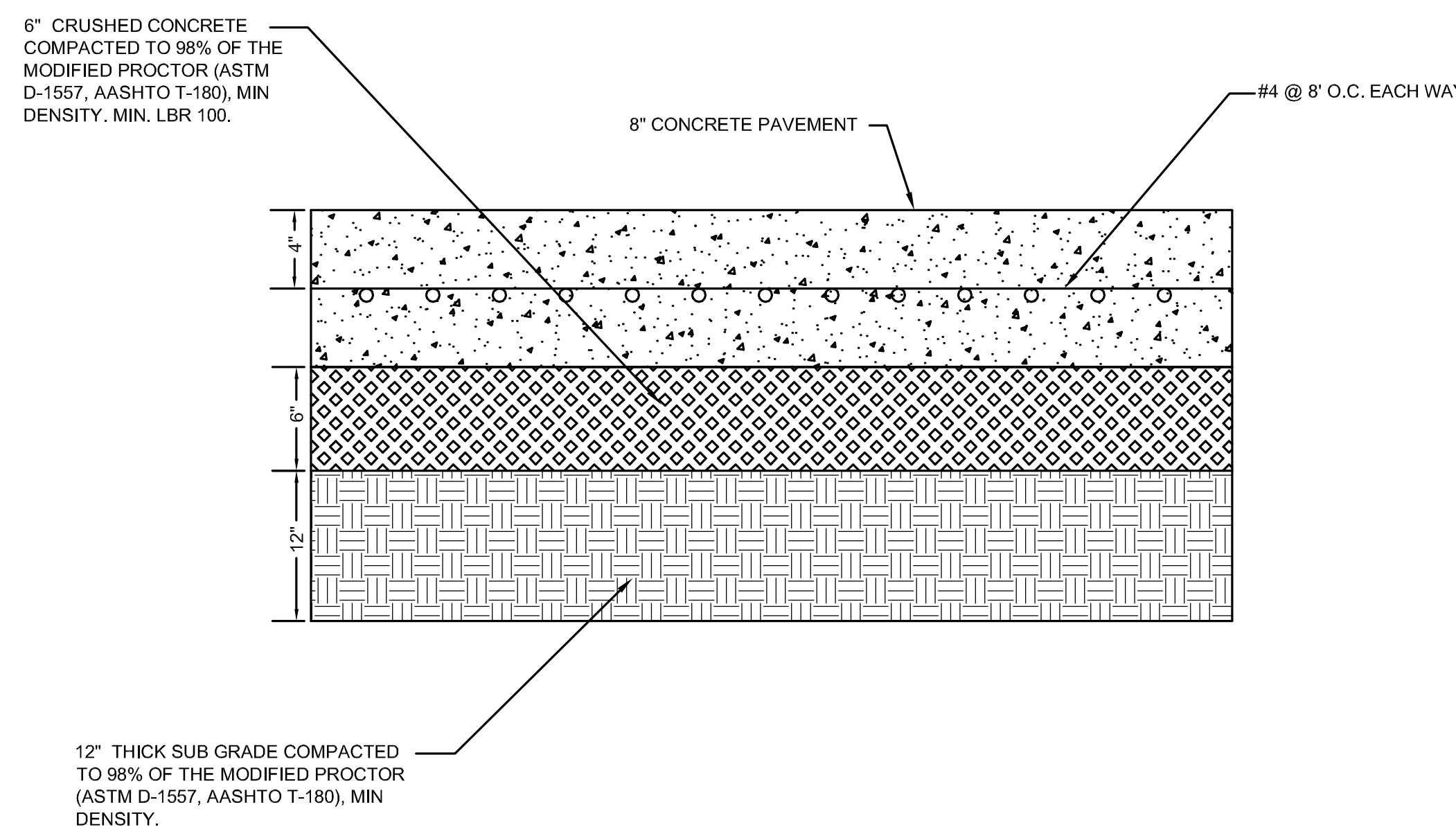
CONTRACTION JOINT DETAIL

NTS



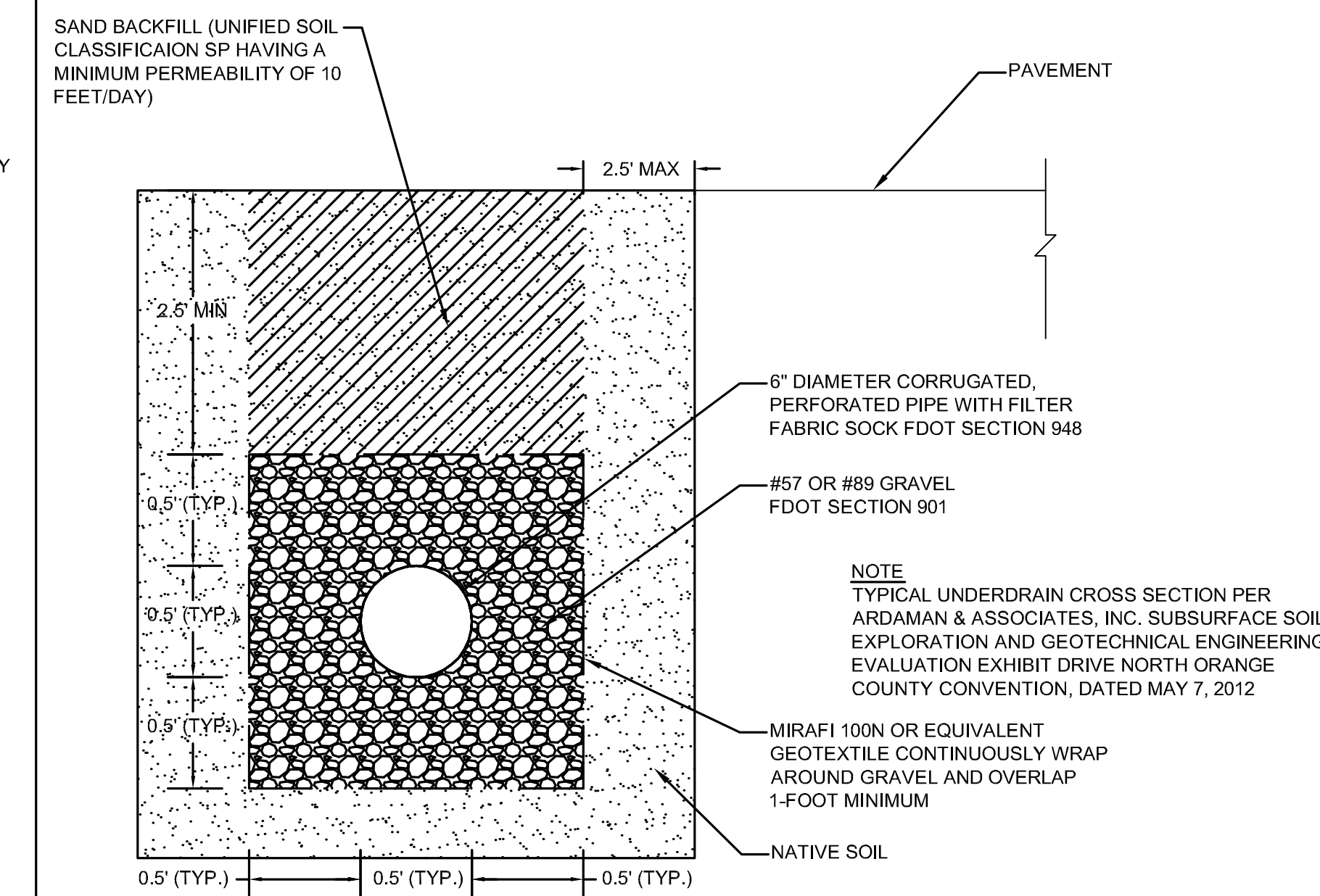
EXISTING STAMPED CONCRETE/CONCRETE PAVEMENT JOINT DETAIL

NTS



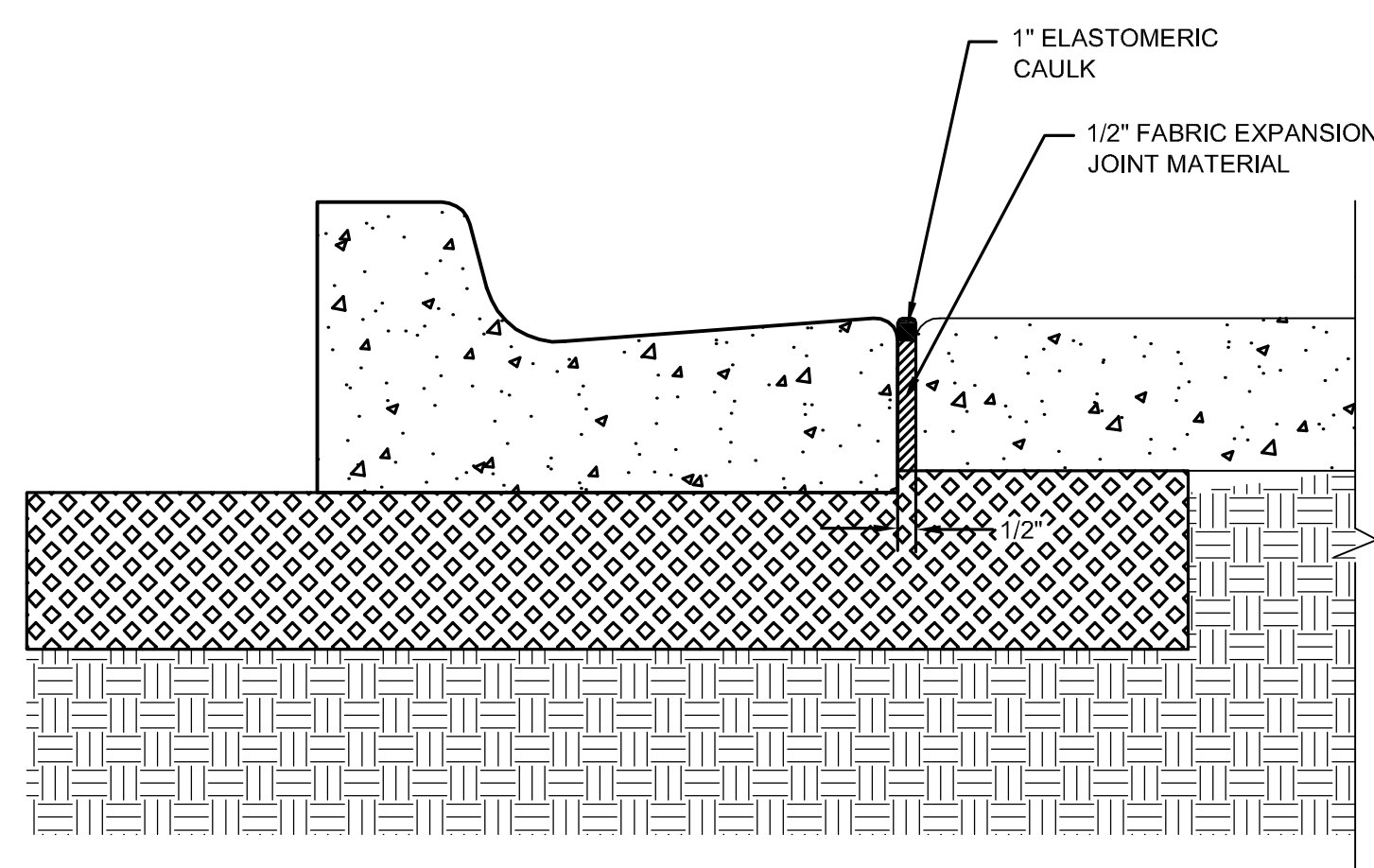
HEAVY DUTY CONCRETE PAVEMENT DETAIL

NTS



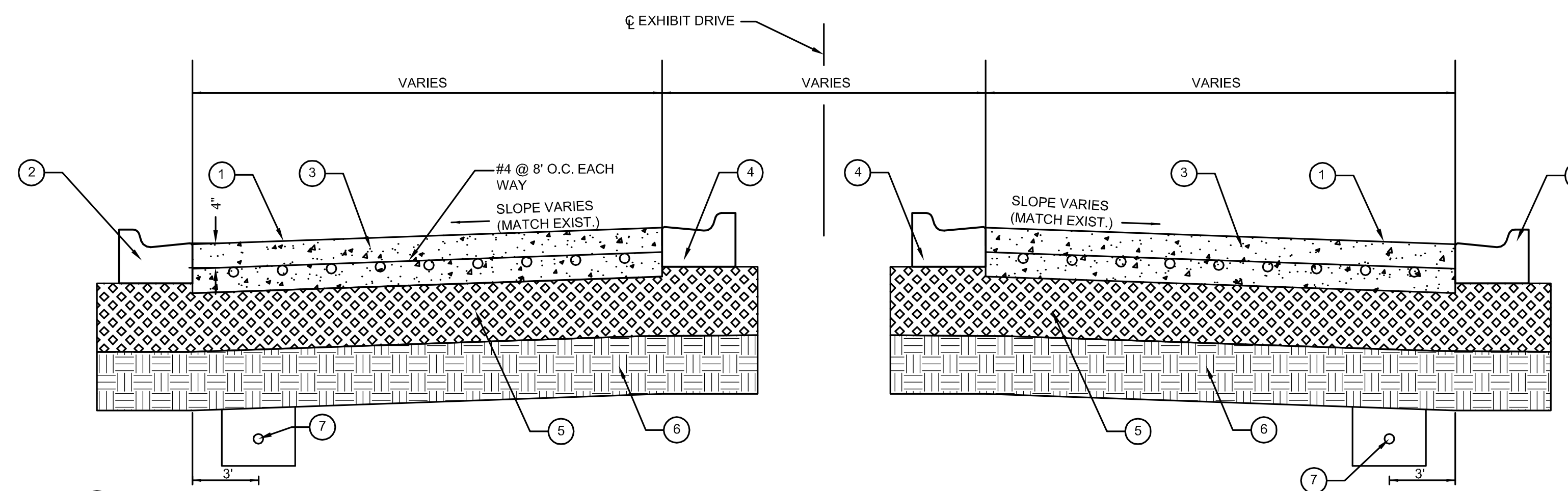
TYPICAL UNDERDRAIN CROSS SECTION

1"=1'



EXPANSION JOINT AT CONCRETE PAVEMENT / CURB JOINTS

NTS



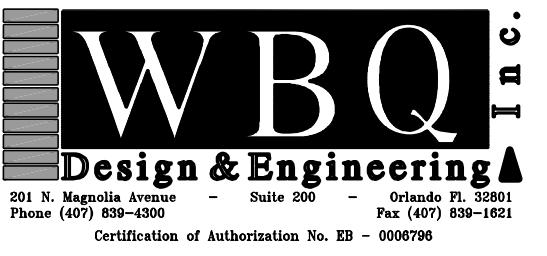
HEAVY DUTY CONCRETE PAVEMENT TYPICAL SECTION

NTS

- | | | | |
|---|--|---|--|
| 1 | CONCRETE PAVEMENT WITH BROOM FINISH | 5 | 6" CRUSHED CONCRETE COMPACTED TO 98% OF THE MODIFIED PROCTOR (ASTM D-1557, AASHTO T-180), MIN DENSITY, MIN. LBR 100. |
| 2 | EXISTING TYPE "F" CURB AND GUTTER TO BE REPLACED | 6 | 12" THICK SUB GRADE COMPACTED TO 98% OF THE MODIFIED PROCTOR (ASTM D-1557, AASHTO T-180), MIN DENSITY. |
| 3 | 8" HEAVY DUTY CONCRETE PAVEMENT | 7 | 6" CORRUGATED, PERFORATED PIPE WITH FILTER FABRIC SOCK FDOT SECTION 948 (REFER TO DETAIL THIS SHEET) |
| 4 | TYPE "F" CURB AND GUTTER TO BE REPLACED | | |

Orange County Convention Center - Pavement Rehab

Owner
Board of County Commissioners
201 South Rosalind Avenue
Orlando, FL 32801



JASON D. VARGAS, P.E.
LICENSE NO. 62434 DATE

No.	By	Date	Revision

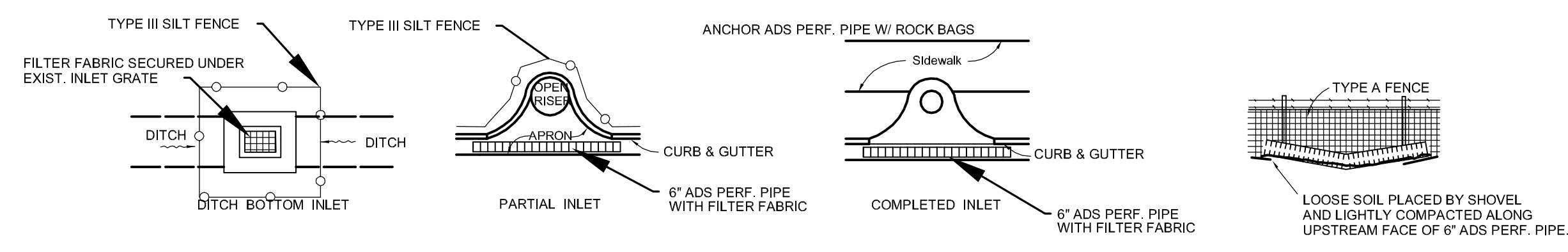
No.	By	Date	Issued for

DRAINAGE DETAILS

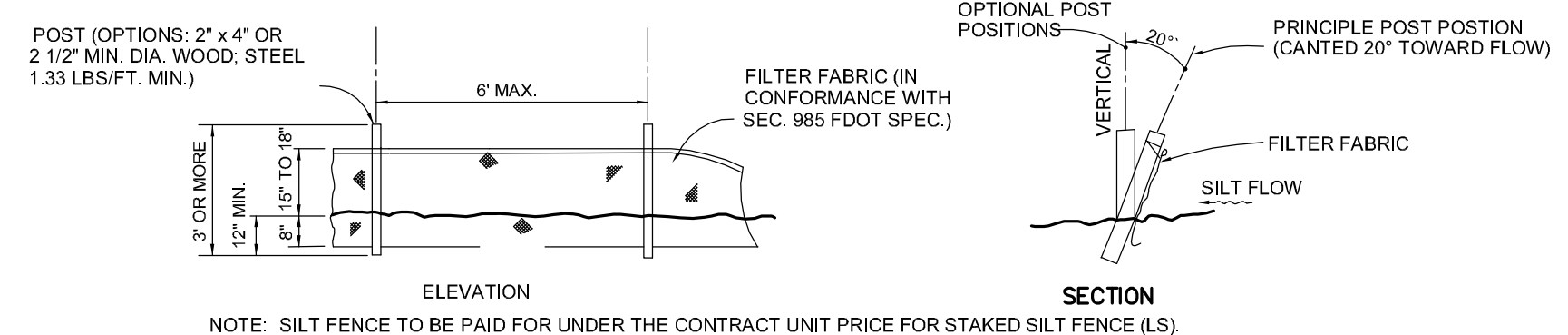
Sheet Title	
Job No.	09ORA.CON-CON
Date	12/11/2012
Drawn	DRV
Checked	JDV
Scale	1"=20'

C701

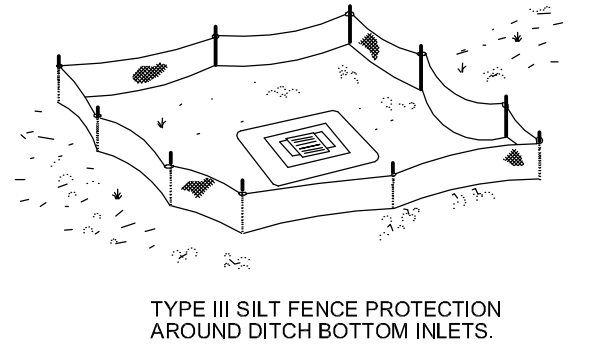
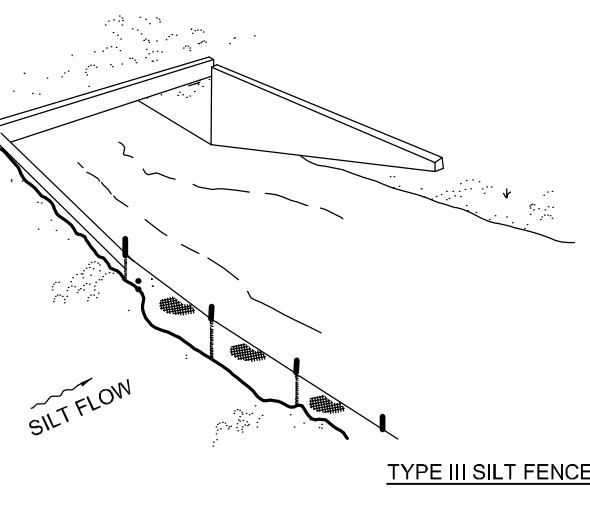
Sheet No.



TYPE III SILT FENCE



TYPE III SILT FENCE



DO NOT DEPLOY IN A MANNER THAT SILT FENCES WILL ACT AS A DAM ACROSS PERMANENT FLOWING WATERCOURSES. SILT FENCES ARE TO BE USED AT UPLAND LOCATION AND TURBIDITY BARRIERS USED AT PERMANENT BODIES OF WATER.

SILT FENCE APPLICATIONS
N.T.S.

- NOTES:**
 ADS PERFORATED PIPE:
 1. WHERE USED IN CONJUNCTION WITH SILT FENCE, ADS PERF. PIPE SHALL BE PLACED ON THE UPSTREAM SIDE OF THE FENCE.
- TYPE III SILT FENCE:**
 1. TYPE III SILT FENCE TO BE USED AT MOST LOCATIONS. WHERE USED IN DITCHES, THE SPACING FOR TYPE III SILT FENCE SHALL BE IN ACCORDANCE WITH CHART 1, SHEET 1 OF THE FDOT ROADWAY AND TRAFFIC DESIGN STANDARDS INDEX #201.
 2. TYPE IV SILT FENCE TO BE USED WHERE LARGE SEDIMENT LOADS ARE ANTICIPATED. SUGGESTED USE IS WHERE FILL SLOPE IS 1:2 OR STEEPER AND LENGTH OF SLOPE EXCEEDS 25 FEET. AVOID USE WHERE THE DETAINED WATER MAY BACK INTO TRAVEL LANES OR OFF THE RIGHT OF WAY.
 3. DO NOT CONSTRUCT SILT FENCES ACROSS PERMANENT FLOWING WATERCOURSES. SILT FENCES ARE TO BE AT UPLAND LOCATIONS AND TURBIDITY BARRIERS USED AT PERMANENT BODIES OF WATER.
 4. WHERE USED AS SLOPE PROTECTION, SILT FENCE IS TO BE CONSTRUCTED ON 0% LONGITUDINAL GRADE TO AVOID CHANNELING RUNOFF ALONG THE LENGTH OF THE FENCE.
 5. SILT FENCE TO BE PAID FOR UNDER THE CONTRACT UNIT PRICE FOR STAKED SILT FENCE, (L.F.).

EROSION CONTROL DETAILS
N.T.S.

