

03 NLU
N 1513919.50
E 521424.30

1144 IR
N 1513917.38
E 521750.07

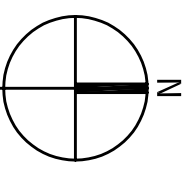
N LINE SE 1/4 SW 1/4 SECTION
S LINE NE 1/4 SW 1/4 SECTION

NOO'17'06"W
2.65'

O.R.B. 1105, PAGE 517

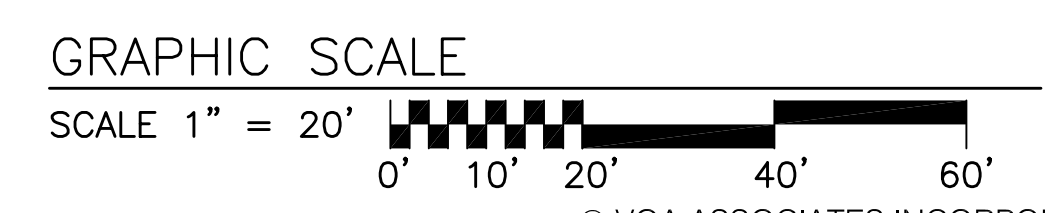
O.R.B. 1105, PAGE 517

1
C-101 **EXISTING SITE AND DEMOLITION PLAN**
SCALE: 1" = 20'



LEGEND

- EXISTING BUILDINGS
- REMOVE ASPHALT
- EXISTING WATER
- EXISTING SANITARY
- EXISTING STORM



CONSTRUCTION DOCUMENTS - MARCH 10, 2014



VOA ASSOCIATES INCORPORATED
4788 NEW BRIDGE STREET, SUITE 100
ORLANDO, FLORIDA 32814
VOICE: 407-432-2500
FAX: 407-648-4275

CIVIL ENGINEERING SERVICES, INC.
4121 EDGEWATER DRIVE ORLANDO, FL 32804-2204
Phone: 407-295-4312 Fax: 407-295-9957
CERTIFICATE OF AUTHORIZATION NUMBER: 7890

CHARLES E. GREIF, JR., P.E.
FLORIDA REGISTRATION 33660

GENERAL NOTES

1. THE CONTRACTOR SHALL VERIFY AND LOCATE ALL VERTICAL AND HORIZONTAL CONTROL POINTS PRIOR TO CONSTRUCTION. IF ANY DISCREPANCIES SHOULD BE FOUND, THE CONTRACTOR SHALL NOTIFY THE ARCHITECT OF THE CONDITION IN WRITING PRIOR TO COMMENCING HIS CONSTRUCTION ACTIVITIES.

KEYED NOTES

NO.	DESCRIPTION:	DATE:
3	REVISED PER ATKINS COMMENTS	2014/01/16
4	REVIEW COMMENT: B13902208-PM	2013/08/16



LIST OF BOARD MEMBERS:

ORANGE COUNTY MAYOR	TERESA JACOBS
DISTRICT 1 COMMISSIONER	S. SCOTT BOYD
DISTRICT 2 COMMISSIONER	FRED BRUMMER
DISTRICT 3 COMMISSIONER	PETE CLARKE
DISTRICT 4 COMMISSIONER	JENNIFER THOMPSON
DISTRICT 5 COMMISSIONER	TED EDWARDS
DISTRICT 6 COMMISSIONER	TIFFANY MOORE RUSSELL

EXISTING SITE & DEMOLITION PLAN

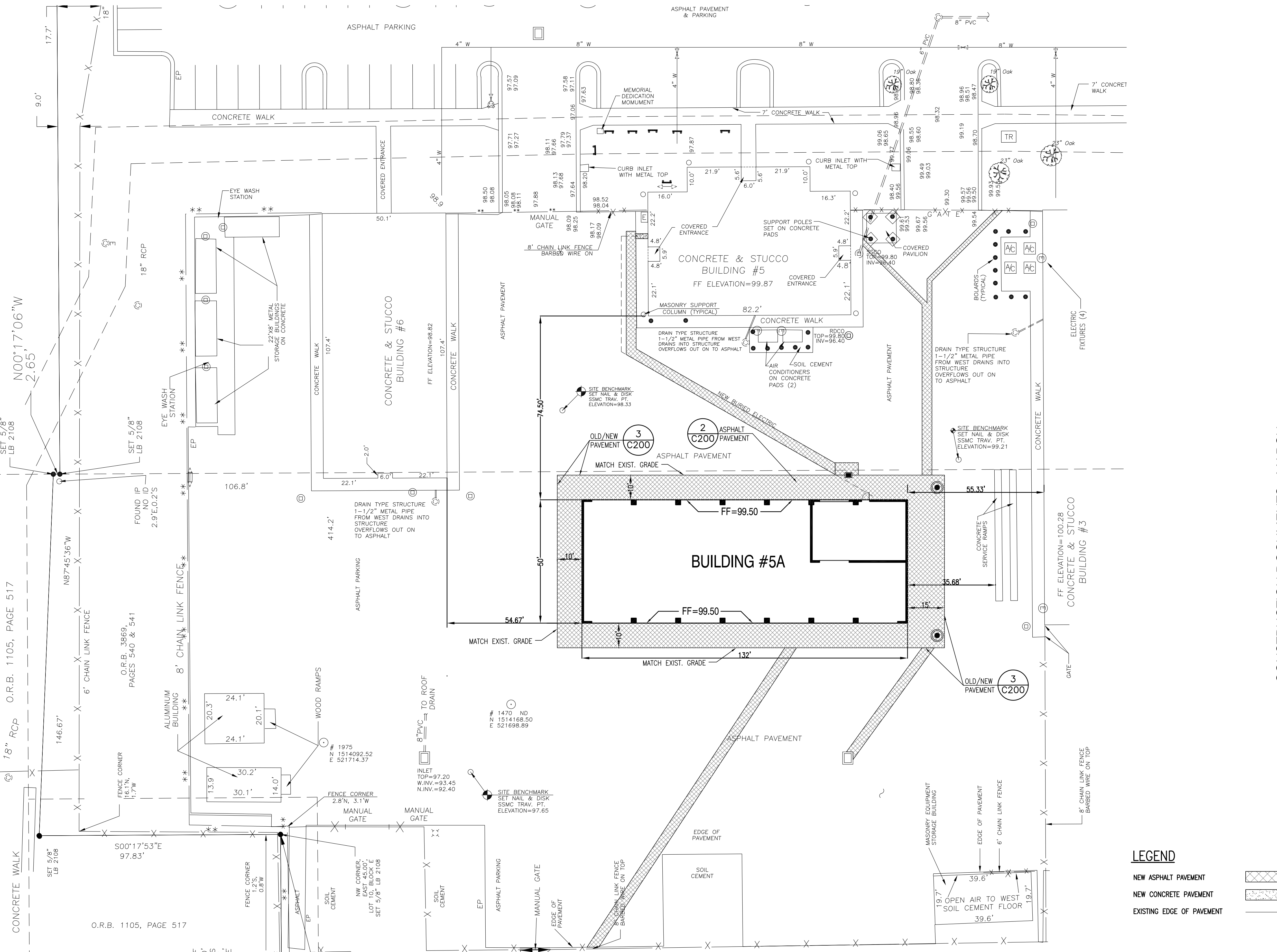
DRAWN BY: **CES**
CHECKED BY: **CEG**
SCALE: **1" = 20'**
START DATE: 06.12.2013
PROJECT NO.: 3764A-00

SHEET NO.: **C-101**

1144 IR
N 1513917.38
E 521750.07

63 ND
N 1513919.50
E 521424.30

N LINE SE 1/4 SW 1/4 SECTIC
S LINE NE 1/4 SW 1/4 SECTIC



1 SITE PLAN
SCALE: 1" = 20'



- LEGEND**
- NEW ASPHALT PAVEMENT
 - NEW CONCRETE PAVEMENT
 - EXISTING EDGE OF PAVEMENT

LIST OF BOARD MEMBERS:

ORANGE COUNTY MAYOR	TERESA JACOBS
DISTRICT 1 COMMISSIONER	S. SCOTT BOYD
DISTRICT 2 COMMISSIONER	FRED BRUMMER
DISTRICT 3 COMMISSIONER	PETE CLARKE
DISTRICT 4 COMMISSIONER	JENNIFER THOMPSON
DISTRICT 5 COMMISSIONER	TED EDWARDS
DISTRICT 6 COMMISSIONER	TIFFANY MOORE RUSSELL

SITE PLAN

DRAWN BY:	CES
CHECKED BY:	CEG
SCALE:	1" = 20'
START DATE:	06.12.2013
PROJECT NO.:	3764A-00

SHEET NO.: **C-102**



VOA ASSOCIATES INCORPORATED
4788 NEW BRIDGE STREET, SUITE 100
ORLANDO, FLORIDA 32814
VOICE: 407-452-2500
FAX: 407-648-4275

CIVIL ENGINEERING SERVICES, INC.
4121 EDGEWATER DRIVE ORLANDO, FL 32804-2204
Phone: 407-295-4312 Fax: 407-295-9957
CERTIFICATE OF AUTHORIZATION NUMBER: 7890

CHARLES E. GREIF, JR., P.E.
FLORIDA REGISTRATION 33660

GENERAL NOTES

KEYED NOTES

CONSTRUCTION DOCUMENTS - MARCH 10, 2014

REVIEW COMMENT: B13902208-PM 2013/08/16
NO.: DESCRIPTION: DATE:

ORANGE COUNTY STORM-WATER MANAGEMENT BUILDING 5A
4200 JOHN YOUNG PKWY
ORLANDO, FL 32839

LIST OF BOARD MEMBERS:

ORANGE COUNTY MAYOR	TERESA JACOBS
DISTRICT 1 COMMISSIONER	S. SCOTT BOYD
DISTRICT 2 COMMISSIONER	FRED BRUMMER
DISTRICT 3 COMMISSIONER	PETE CLARKE
DISTRICT 4 COMMISSIONER	JENNIFER THOMPSON
DISTRICT 5 COMMISSIONER	TED EDWARDS
DISTRICT 6 COMMISSIONER	TIFFANY MOORE RUSSELL

SITE PLAN

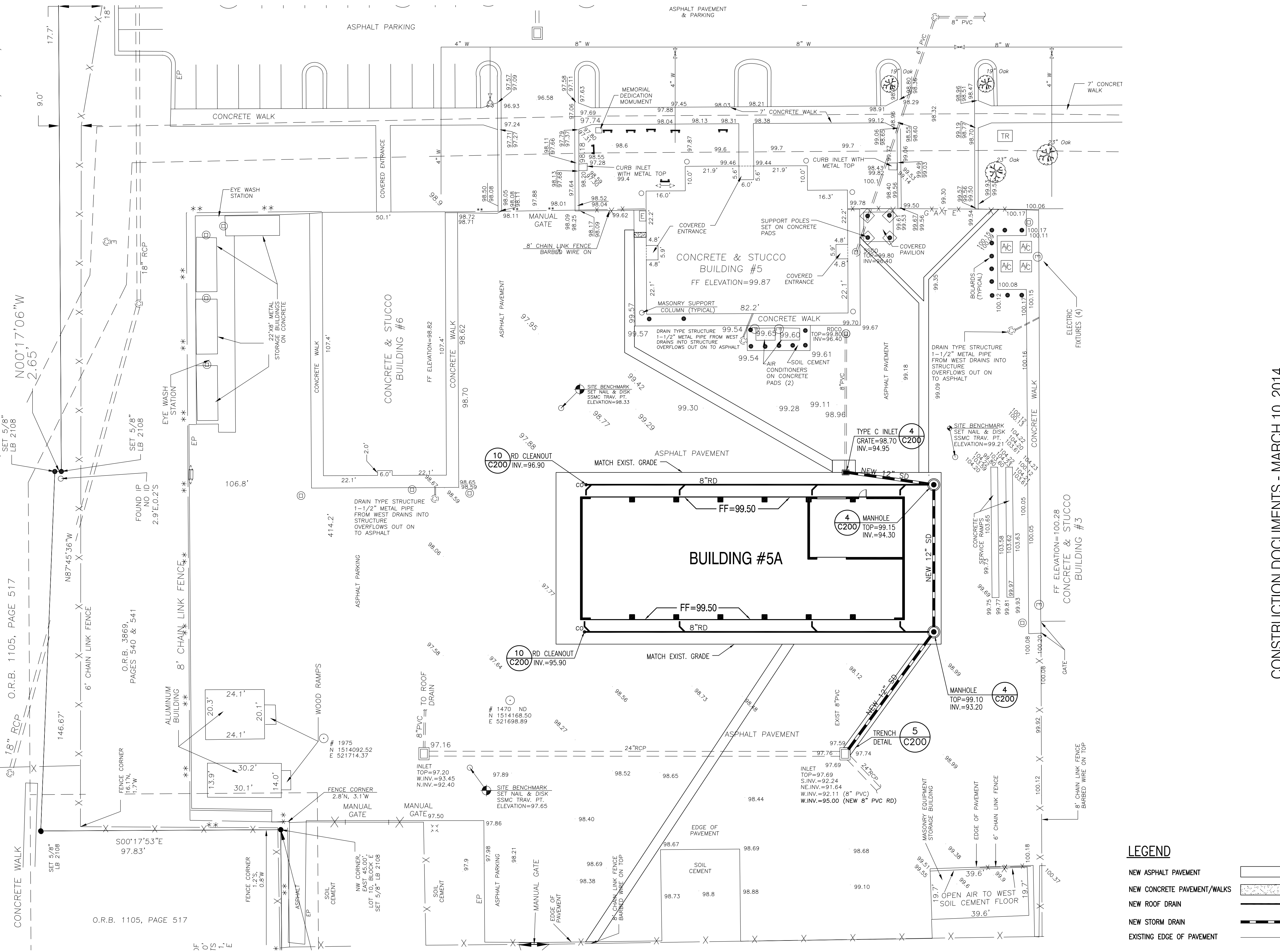
DRAWN BY:	CES
CHECKED BY:	CEG
SCALE:	1" = 20'
START DATE:	06.12.2013
PROJECT NO.:	3764A-00

SHEET NO.: **C-102**

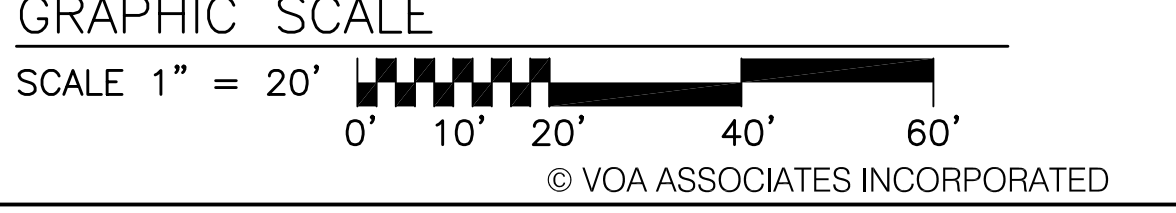
63 ND
N 1513919.50
E 521424.30

1144 IR
N 1513917.38
E 521750.07

N LINE SE 1/4 SW 1/4 SECTIC
S LINE NE 1/4 SW 1/4 SECTIC



1 GRADING & DRAINAGE PLAN
C-103 SCALE: 1" = 20'



CIVIL ENGINEERING SERVICES, INC.
 4121 EDGEWATER DRIVE ORLANDO, FL 32804-2204
 Phone: 407-295-4312 Fax: 407-295-9957
 CERTIFICATE OF AUTHORIZATION NUMBER: 7890

CHARLES E. GREIF, JR., P.E.
 FLORIDA REGISTRATION 33660

GENERAL NOTES

KEYED NOTES

CONSTRUCTION DOCUMENTS - MARCH 10, 2014

REVIEW COMMENT: B13902208-PM 2013/08/16
 NO.: DESCRIPTION: DATE:

ORANGE COUNTY STORM-WATER MANAGEMENT BUILDING 5A
 4200 JOHN YOUNG PKWY ORLANDO, FL 32839

- LIST OF BOARD MEMBERS:
- | | |
|-------------------------|-----------------------|
| ORANGE COUNTY MAYOR | TERESA JACOBS |
| DISTRICT 1 COMMISSIONER | S. SCOTT BOYD |
| DISTRICT 2 COMMISSIONER | FRED CLARKE |
| DISTRICT 3 COMMISSIONER | PETE CLARKE |
| DISTRICT 4 COMMISSIONER | JENNIFER THOMPSON |
| DISTRICT 5 COMMISSIONER | TED EDWARDS |
| DISTRICT 6 COMMISSIONER | TIFFANY MOORE RUSSELL |

GRADING & DRAINAGE PLAN

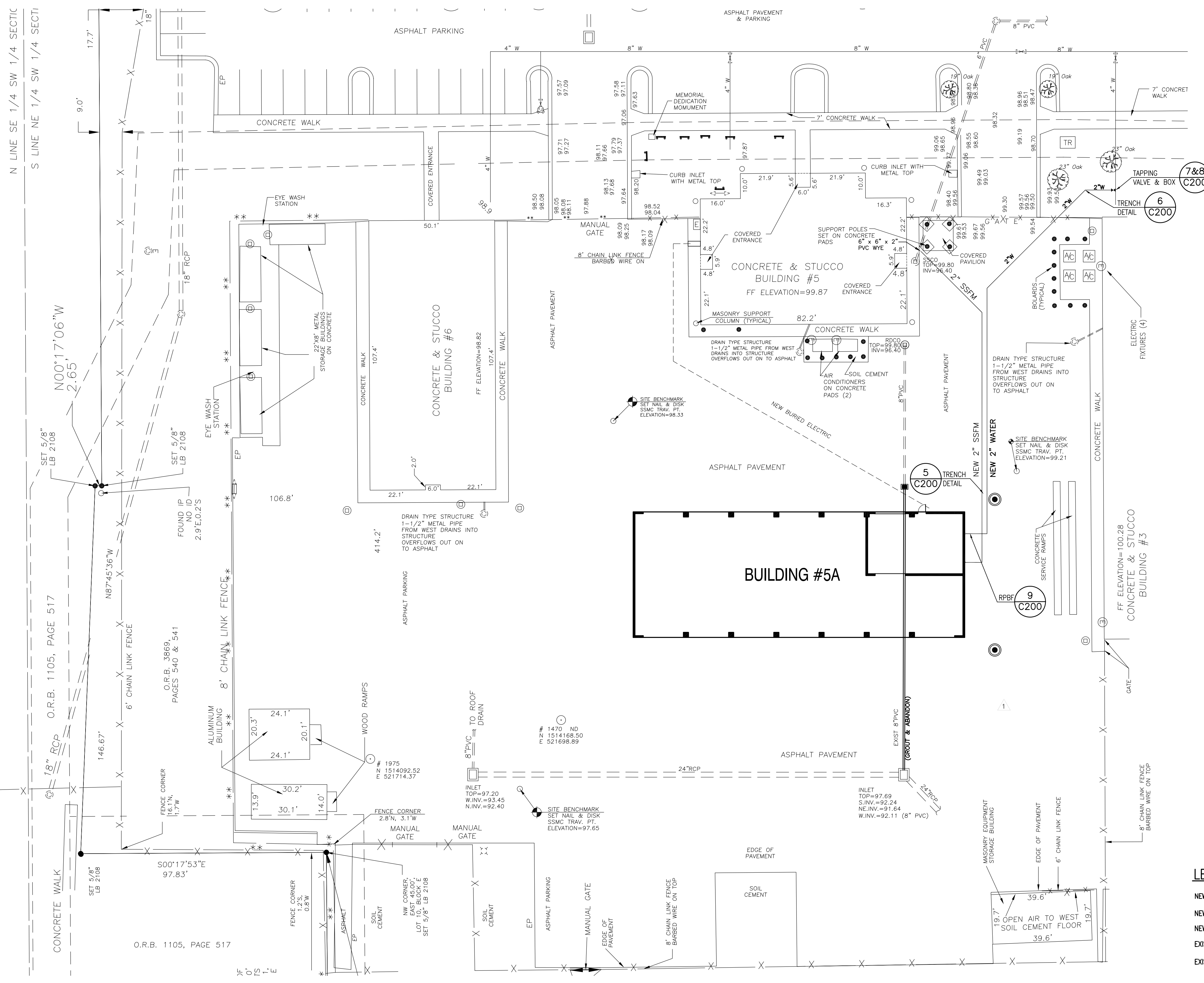
DRAWN BY: **CES**
 CHECKED BY: **CEG**
 SCALE: **1" = 20'**
 START DATE: 06.12.2013
 PROJECT NO.: 3764A-00

SHEET NO.: **C-103**

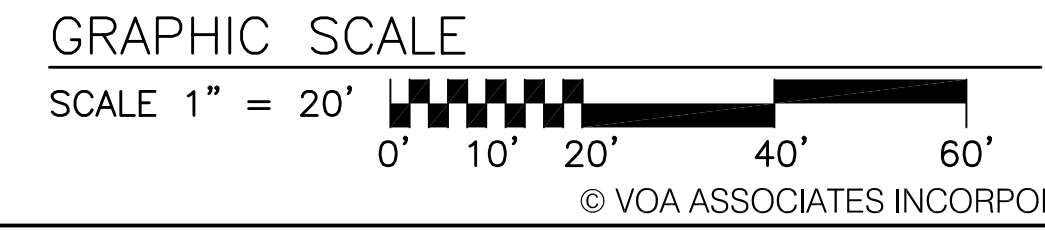
FILE: D:\Projects\VOA\OCF\PSA\Civil\Bldg 5a Drawings.dwg

63 ND
N 1513919.50
E 521424.30

1144 IR
N 1513917.38
E 521750.07



1 **UTILITY PLAN**
SCALE: 1" = 20'



LEGEND

NEW WATER LINE	W
NEW SANITARY SEWER FORCE MAIN	SSFM
NEW ELECTRIC	ELECT
EXISTING ROOF DRAIN	RD
EXISTING EDGE OF PAVEMENT	

CONSTRUCTION DOCUMENTS - MARCH 10, 2014



CIVIL ENGINEERING SERVICES, INC.
4121 EDGEWATER DRIVE ORLANDO, FL 32804-2204
Phone: 407-295-4312 Fax: 407-295-9957
VOICE: 407-425-2500
CERTIFICATE OF AUTHORIZATION NUMBER: 7890

CHARLES E. GREIF, JR., P.E.
FLORIDA REGISTRATION 33660
GENERAL NOTES

KEYED NOTES

3	REVISED PER ATKINS COMMENTS	2014/01/16
1	REVIEW COMMENT: B13902208-PM	2013/08/16
NO.:	DESCRIPTION:	DATE:

ORANGE COUNTY STORM-WATER MANAGEMENT BUILDING 5A
4200 JOHN YOUNG PKWY
ORLANDO, FL 32839

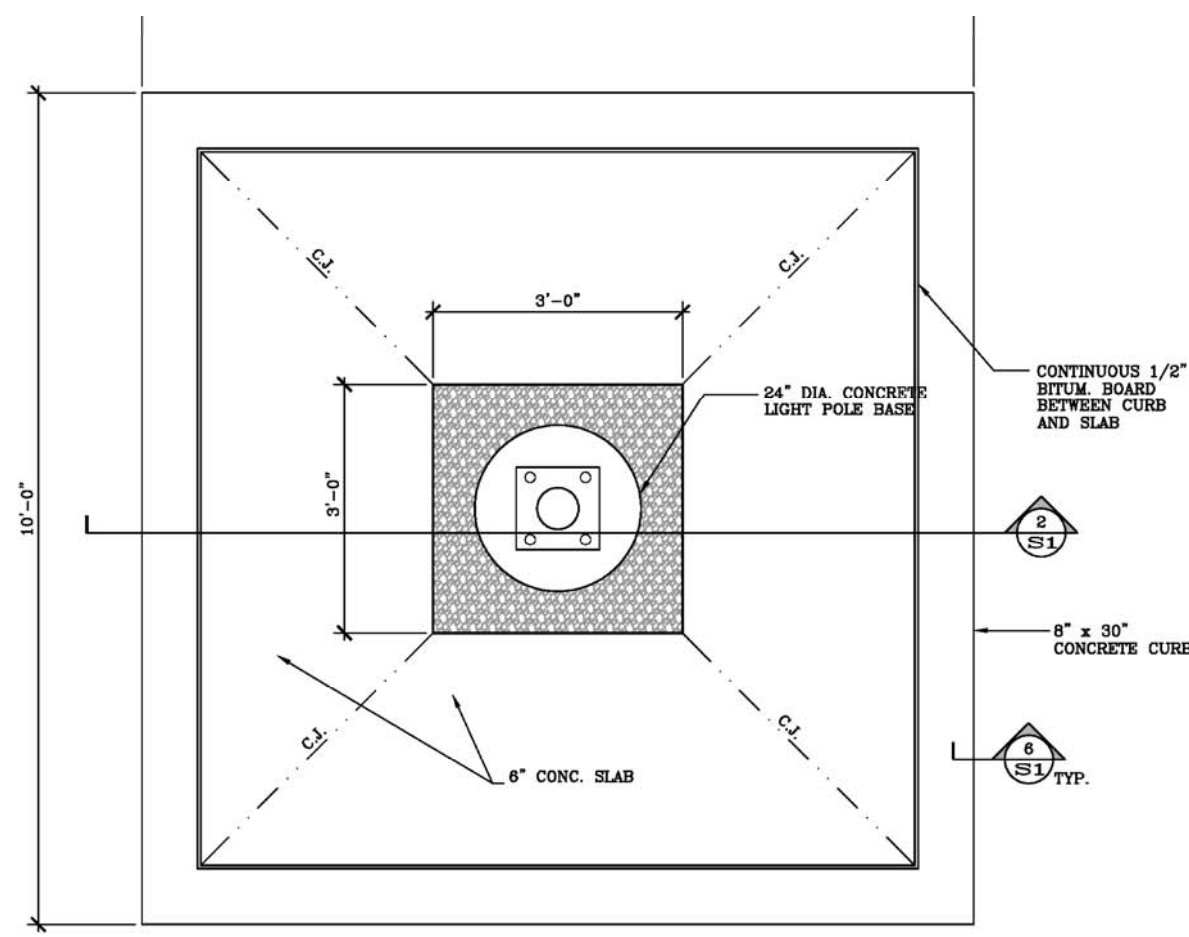
LIST OF BOARD MEMBERS:

ORANGE COUNTY MAYOR	TERESA JACOBS
DISTRICT 1 COMMISSIONER	S. SCOTT BOYD
DISTRICT 2 COMMISSIONER	FRED BRUMMER
DISTRICT 3 COMMISSIONER	PETE CLARKE
DISTRICT 4 COMMISSIONER	JENNIFER THOMPSON
DISTRICT 5 COMMISSIONER	TED EDWARDS
DISTRICT 6 COMMISSIONER	TIFFANY MOORE RUSSELL

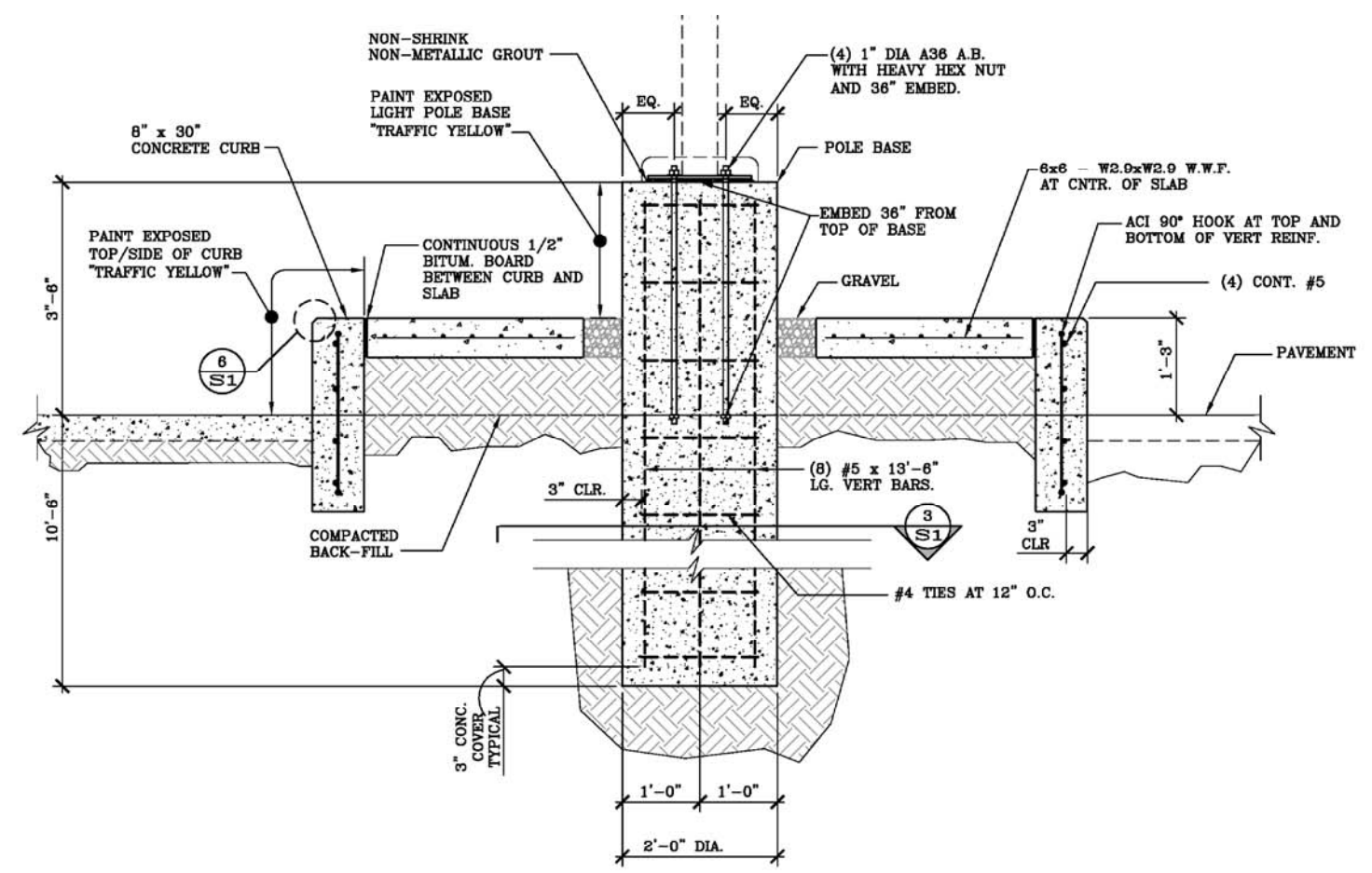
UTILITY PLAN

DRAWN BY:	CES
CHECKED BY:	CEG
SCALE:	1" = 20'
START DATE:	06.12.2013
PROJECT NO.:	3764A-00

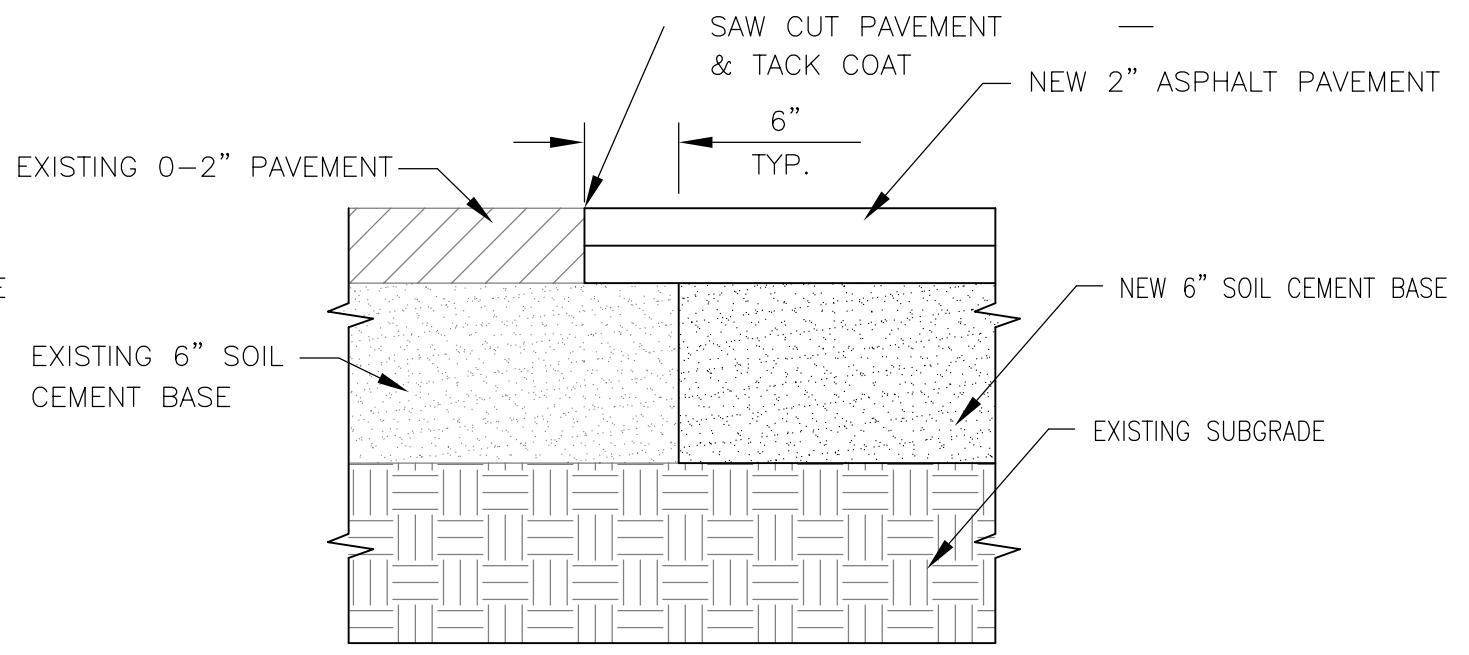
SHEET NO.: **C-104**



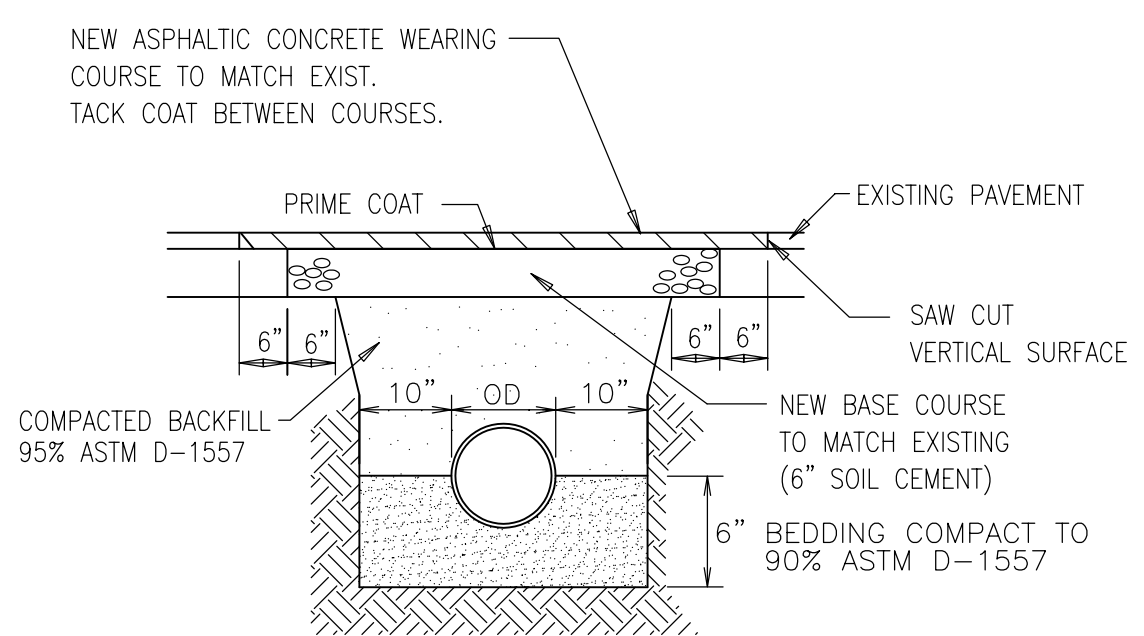
1
EXISTING LIGHT POLE &
FOUNDATION TO BE REMOVED
C-101 NTS



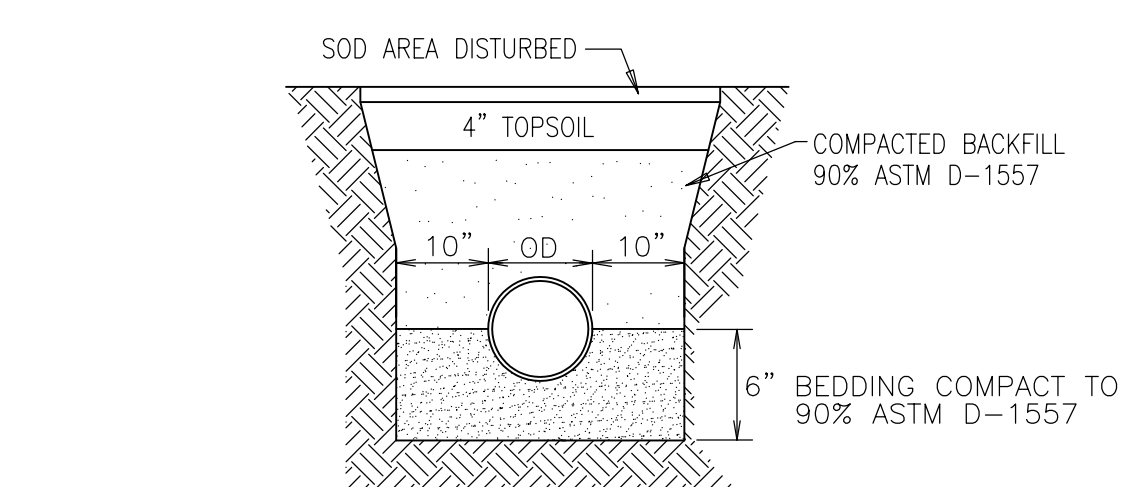
2
ASPHALT PAVEMENT
C-102 NTS



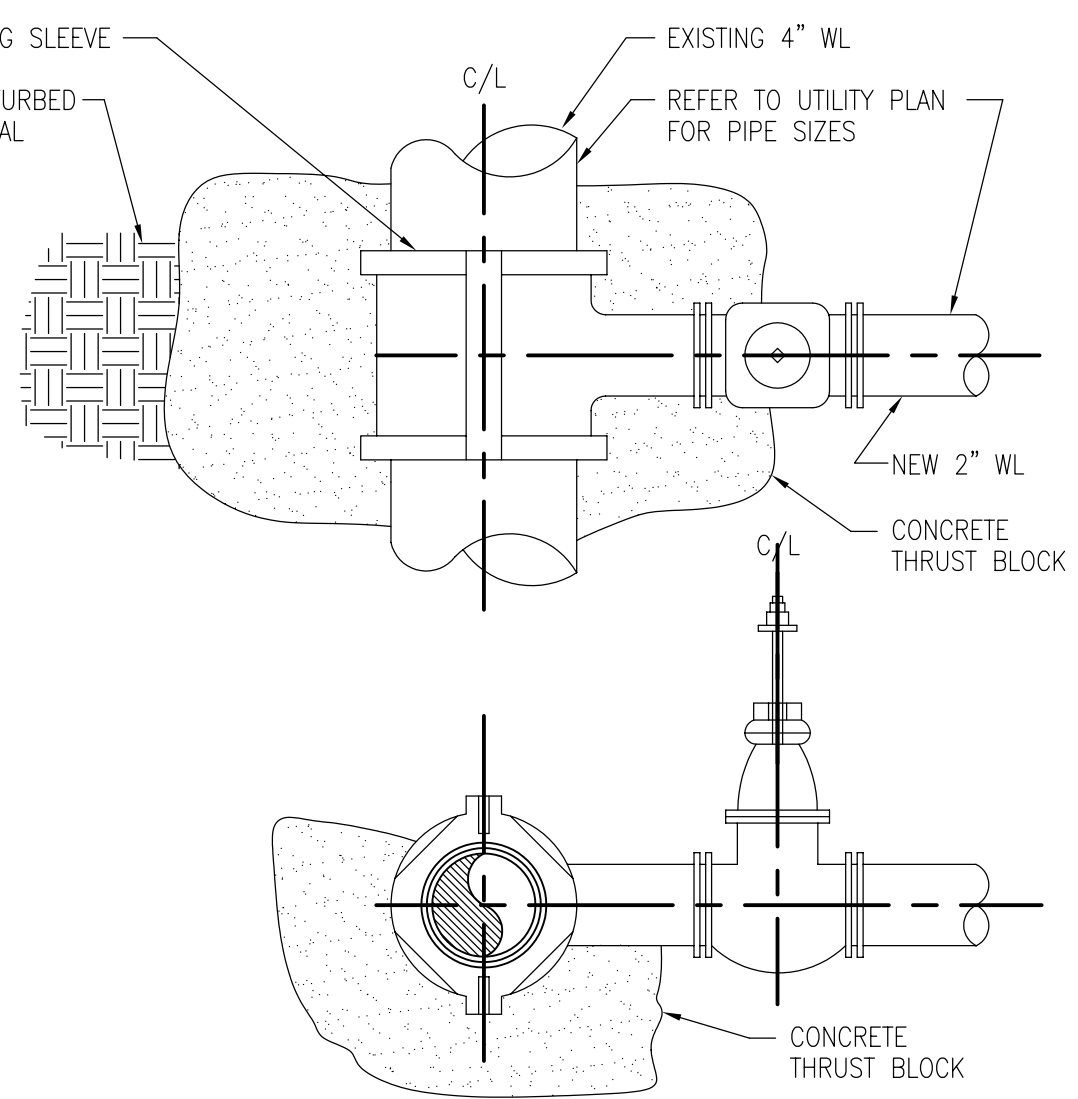
3
OLD/NEW PAVEMENT
C-102 NTS



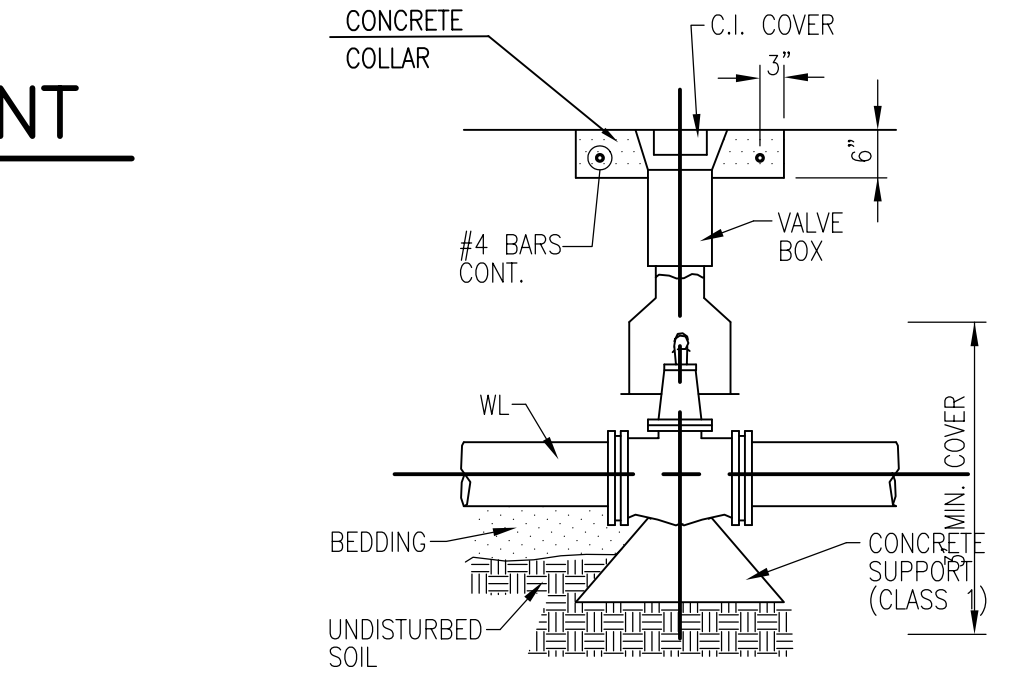
5
TRENCH DETAIL
PAVED AREAS
C-104 NTS
C-103



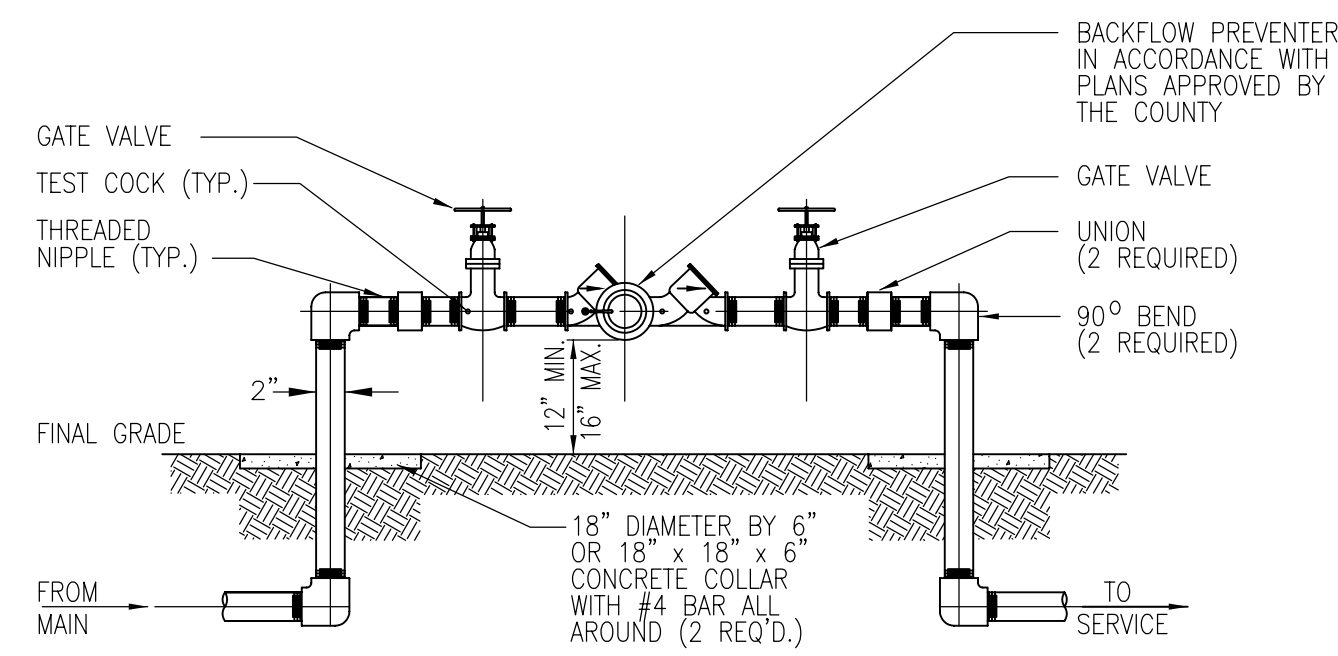
6
TRENCH DETAIL
UNPAVED AREAS
C-104 NTS



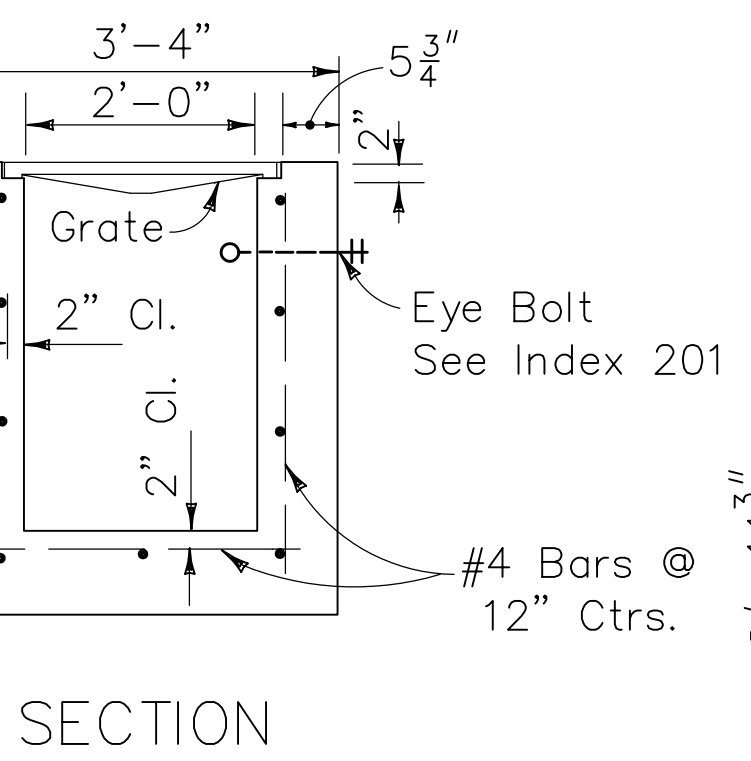
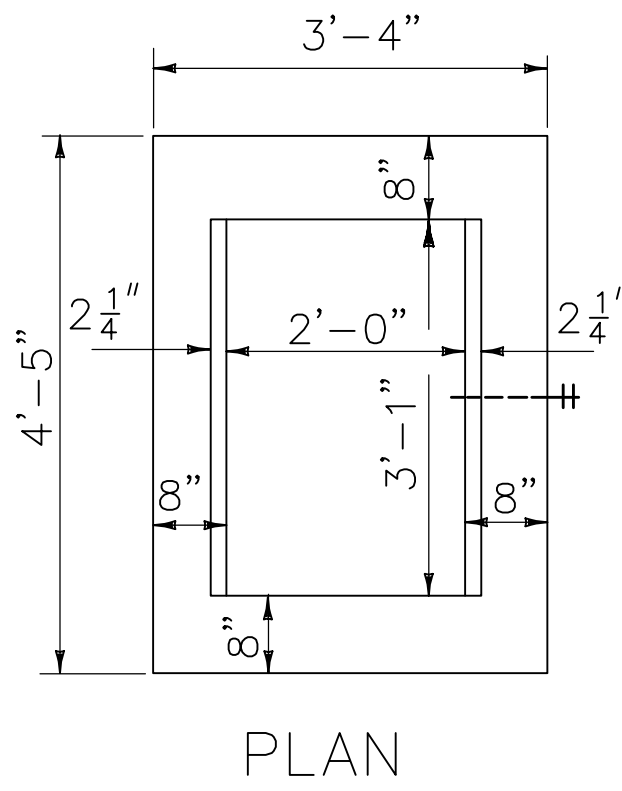
7
TAPPING SLEEVE & VALVE
C-104 NTS



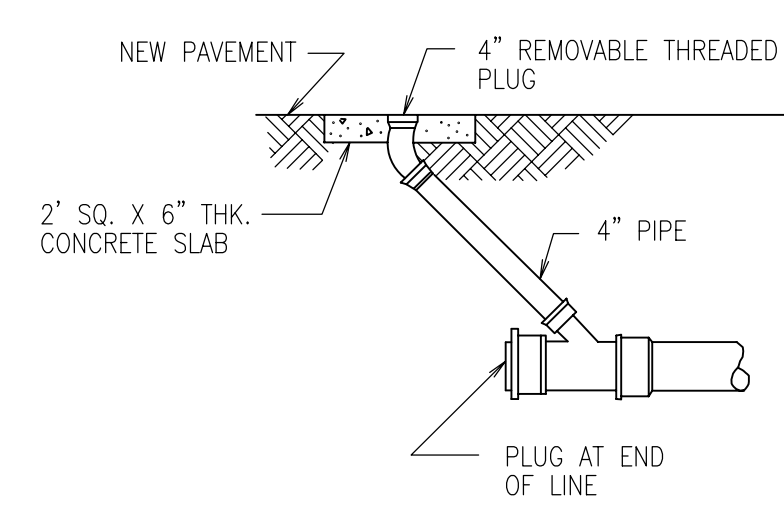
8
VALVE BOX
C-104 NTS



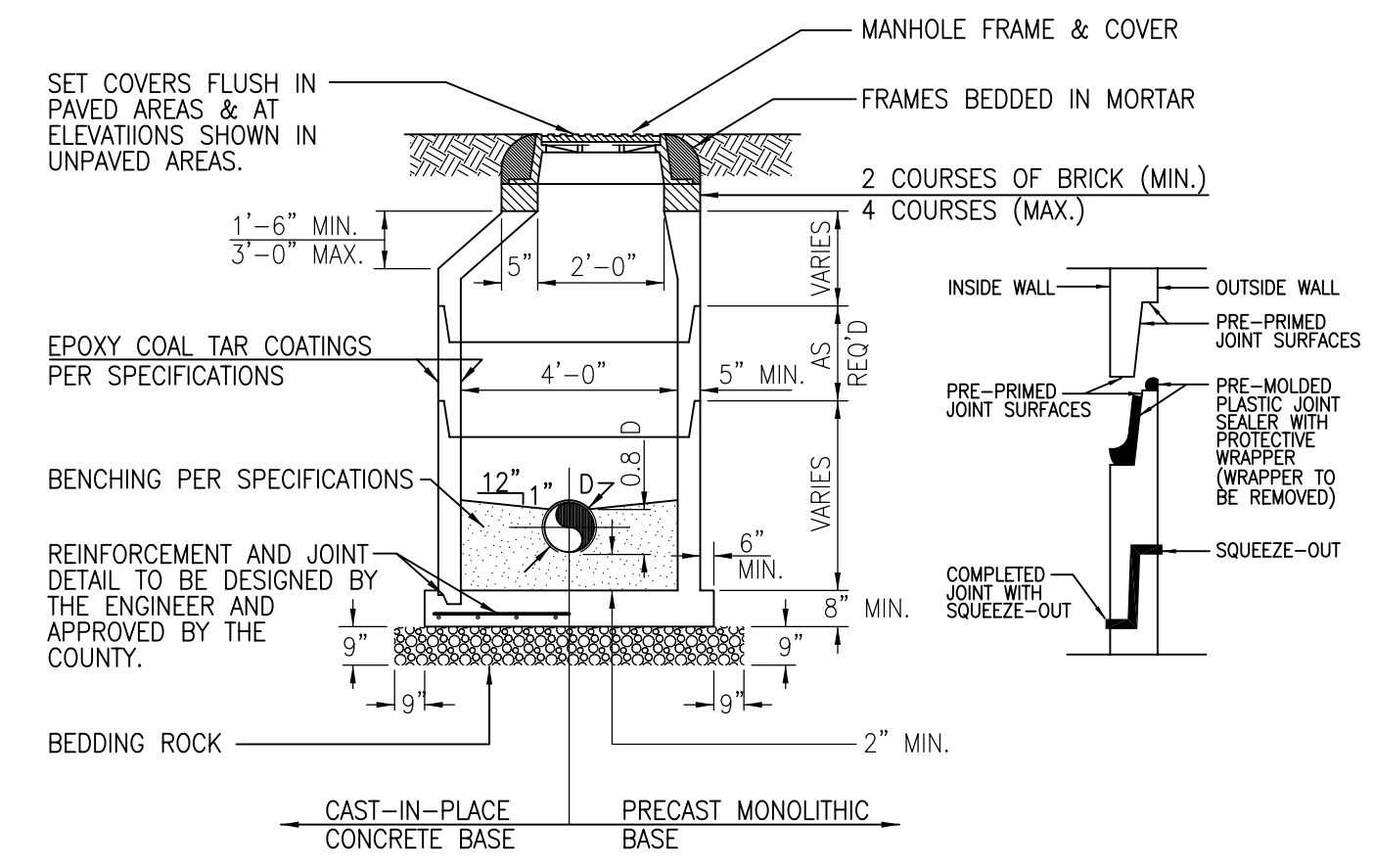
9
REDUCED PRESSURE
BACKFLOW PREVENTER
C-104 NTS



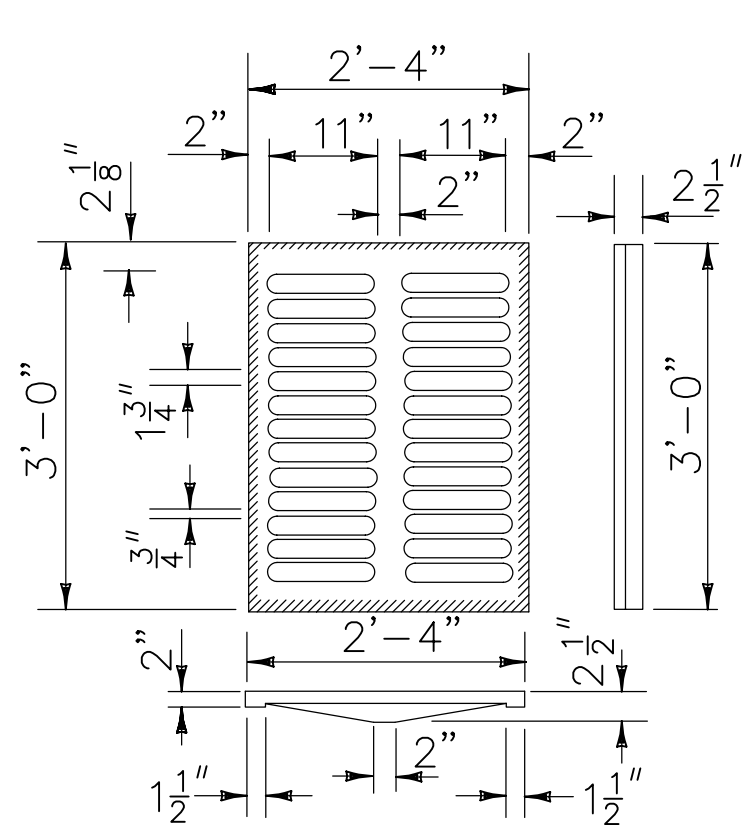
4
FDOT TYPE C INLET
C-103 NTS



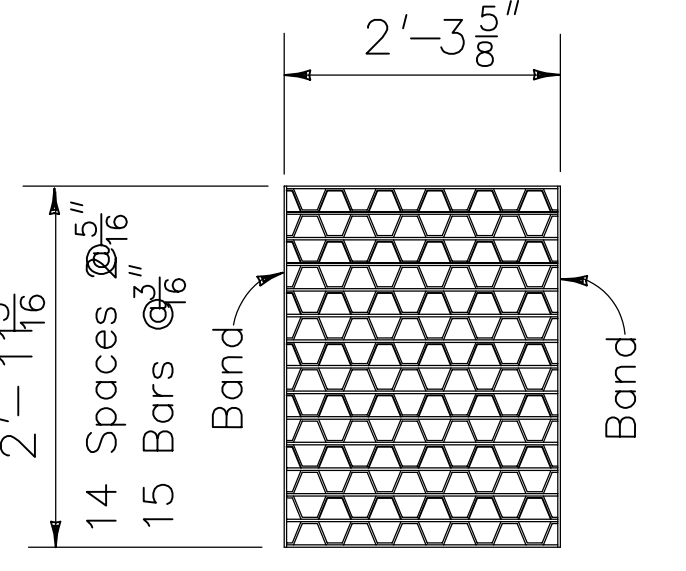
10
ROOF DRAIN CLEANOUT
C-103 NTS



11
STORM MANHOLE
C-103 NTS



TYPE C
Approx. Weight 235 Lbs.



TYPE C
Approx. Weight 100 Lbs.

CONSTRUCTION DOCUMENTS - MARCH 10, 2014



VOA ASSOCIATES INCORPORATED
4788 NEW BRIDGE STREET, SUITE 100
ORLANDO, FLORIDA 32814
VOICE: 407-425-2500
FAX: 407-648-4275

CIVIL ENGINEERING SERVICES, INC.
4121 EDGEWATER DRIVE ORLANDO, FL 32804-2204
Phone: 407-295-4312 Fax: 407-295-9957
CERTIFICATE OF AUTHORIZATION NUMBER: 7890

CHARLES E. GREIF, JR., P.E.
FLORIDA REGISTRATION 33660

GENERAL NOTES

KEYED NOTES

REVIEW COMMENT: B13902208-PM 2013/08/16
NO.: DESCRIPTION: DATE:

ORANGE COUNTY STORM-WATER MANAGEMENT BUILDING 5A
4200 JOHN YOUNG PKWY ORLANDO, FL 32839

LIST OF BOARD MEMBERS:
ORANGE COUNTY MAYOR TERESA JACOBS
DISTRICT 1 COMMISSIONER S. SCOTT BOYD
DISTRICT 2 COMMISSIONER FRED BRUMMER
DISTRICT 3 COMMISSIONER PETE CLARKE
DISTRICT 4 COMMISSIONER JENNIFER THOMPSON
DISTRICT 5 COMMISSIONER TED EDWARDS
DISTRICT 6 COMMISSIONER TIFFANY MOORE RUSSELL

DETAILS

DRAWN BY: CES
CHECKED BY: CEG
SCALE: AS NOTED
START DATE: 06.12.2013
PROJECT NO.: 3764A-00

SHEET NO.: **C-200**