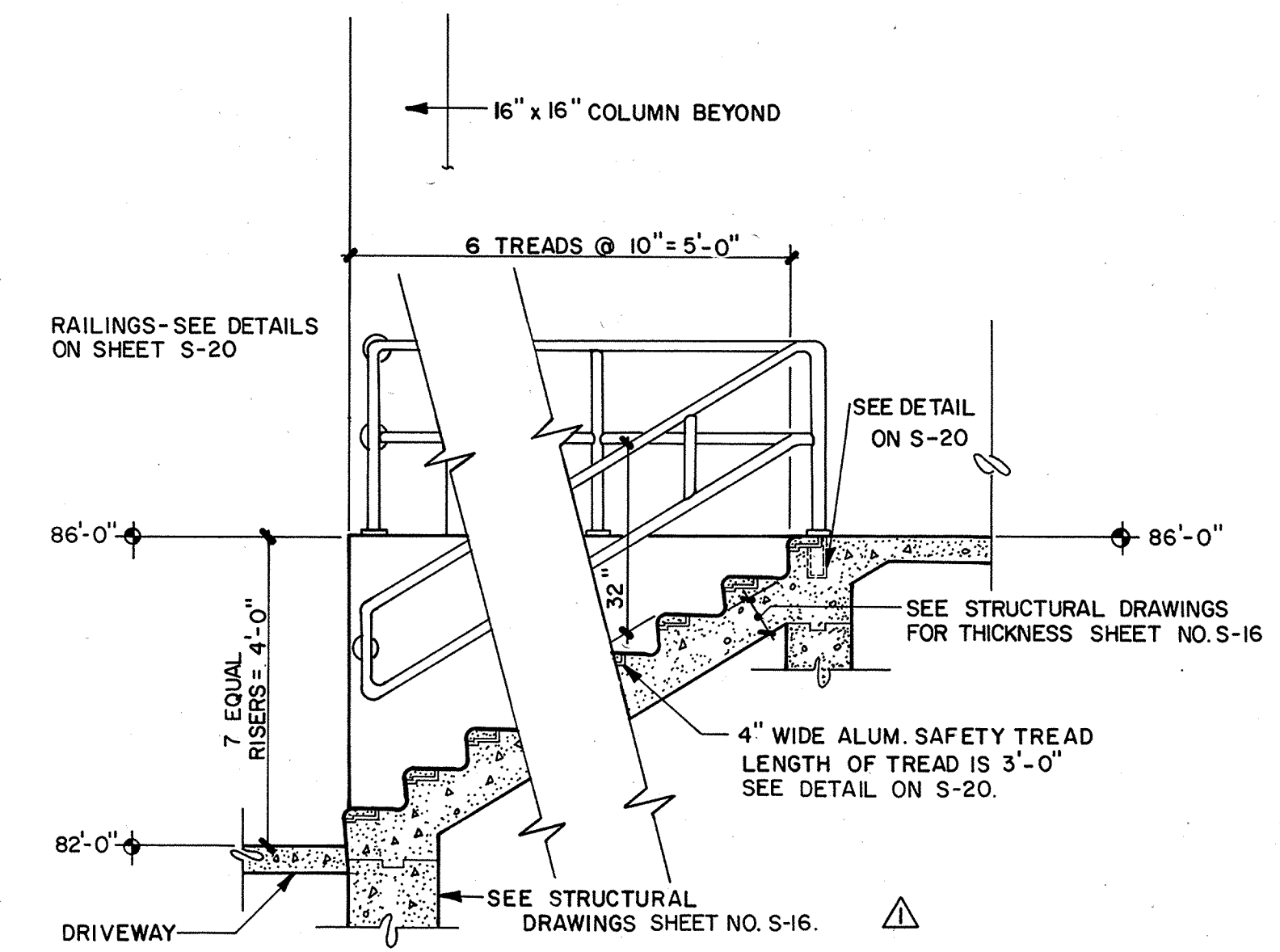


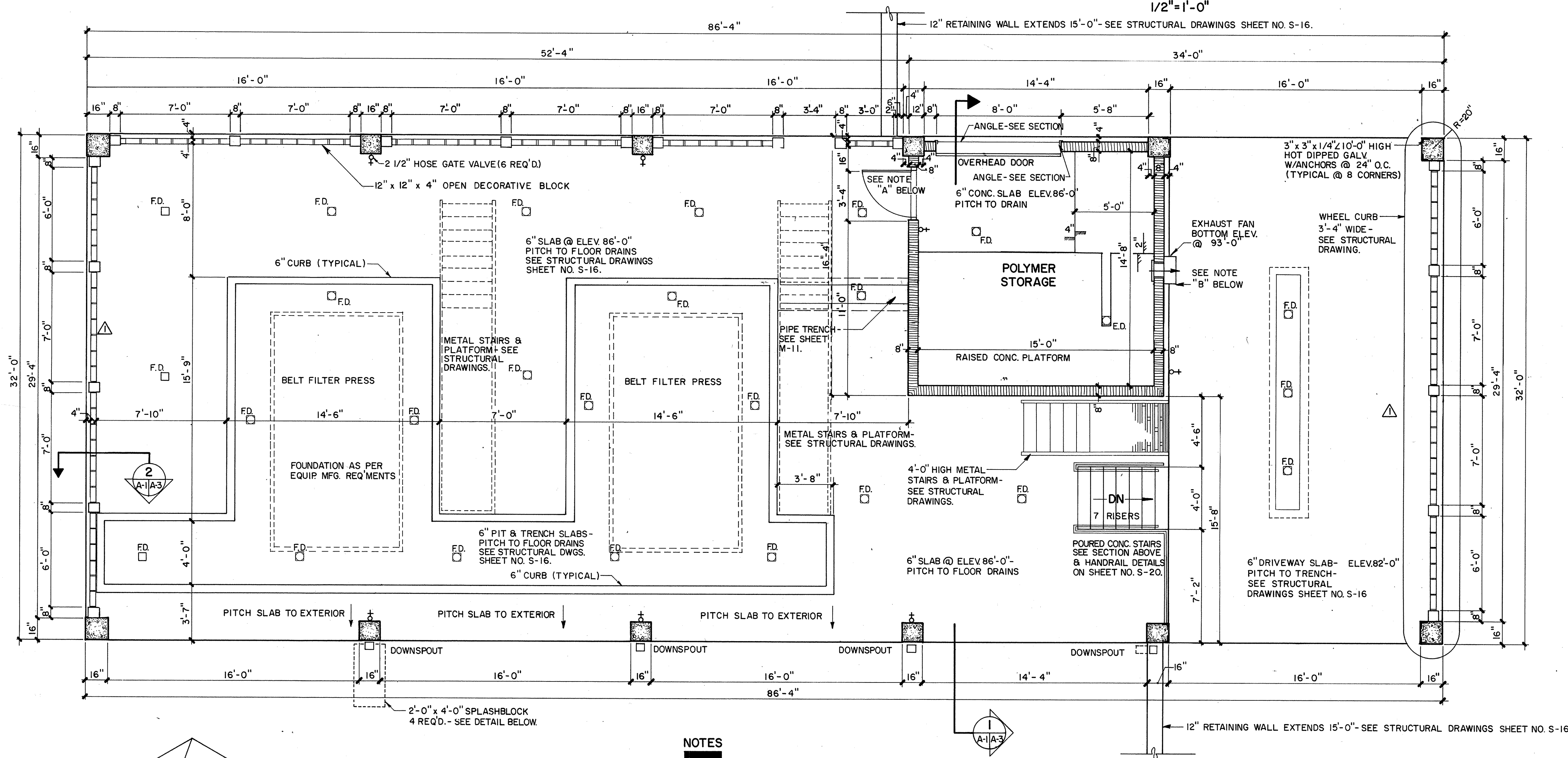
**ROOF PLAN**

1/8" = 1'-0"



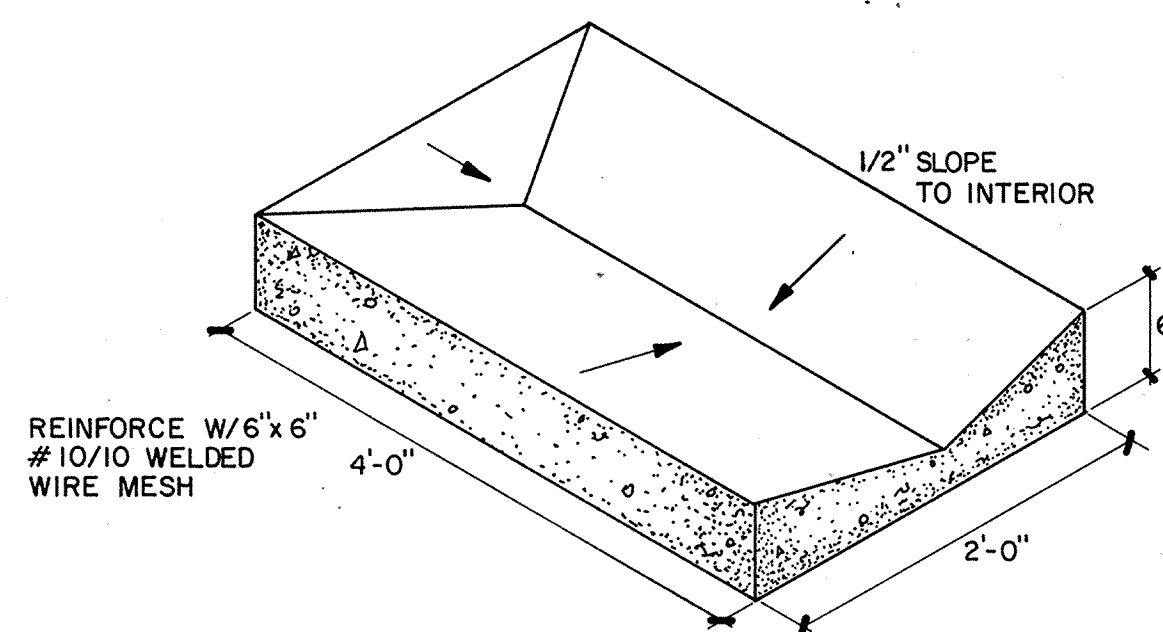
**STAIR DETAIL**

1/2" = 1'-0"



**FLOOR PLAN**

1/4" = 1'-0"



**SPLASHBLOCK**

N.T.S.

**NOTES**

- A. DOOR - 1 3/4" THICK FLUSH DARK BRONZE ANOD. HEAVY ALUM. DOOR TYPE D-9 BY U.S. METALS MFG. CO. OR APPROVED EQUAL (3'-0" x 6'-8") WITH 24" x 34" 1/4" PLATE GLASS VIEW PANEL. FRAME - PRESSED METAL 14 GAUGE GALV. STEEL (6" WIDE, 2" JAMBS, 4" HEAD) WITH MASONRY ANCHORS, & GROUTED SOLID TO ADJOINING CMU UNITS. HINGES - THREE 4 1/2" STAINLESS STEEL, BALL-BEARING, STANDARD WEIGHT. HARDWARE - NON-LOCKABLE STAINLESS STEEL EXTERIOR & ALL WORKING PARTS. PROVIDE ALUM. KICKPLATES BOTH SIDES. THRESHOLD - EXT. ALUM. WATER RETURN THRESHOLD (PEMCO 136A OR APPROVED EQUAL) WITH CONCEALED INTERLOCKING HOOK STRIP ON DOOR (PEMCO 61 OR APPROVED EQUAL).
- B. EXHAUST FAN - 16" SQUARE RECESS IN CMU FOR LOREN COOK TYPE APD #12P15D 1/20 HP OR APPROVED EQUAL.

REV. NO.	DATE	DRWN	CHKD	REMARKS
1	JUN 85	NJM		REVISE PER ADDENDUM NO. 1
	12/84	ALN		RECORD DRAWING

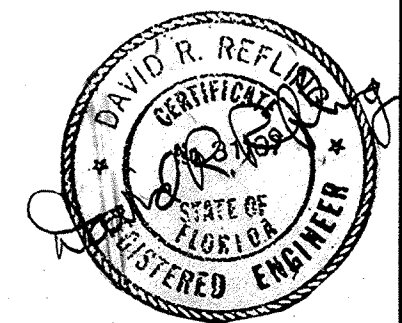
DESIGNED BY: D.J.B.  
 DRAWN BY: K.A.F.  
 CHECKED BY: J.R.C.  
 APPROVED BY: J.R.C.  
 DATE: MAR. 1983

**CAMP DRESSER & MCKEE INC.**  
 ENGINEERS, ARCHITECTS, PLANNERS & MANAGEMENT CONSULTANTS

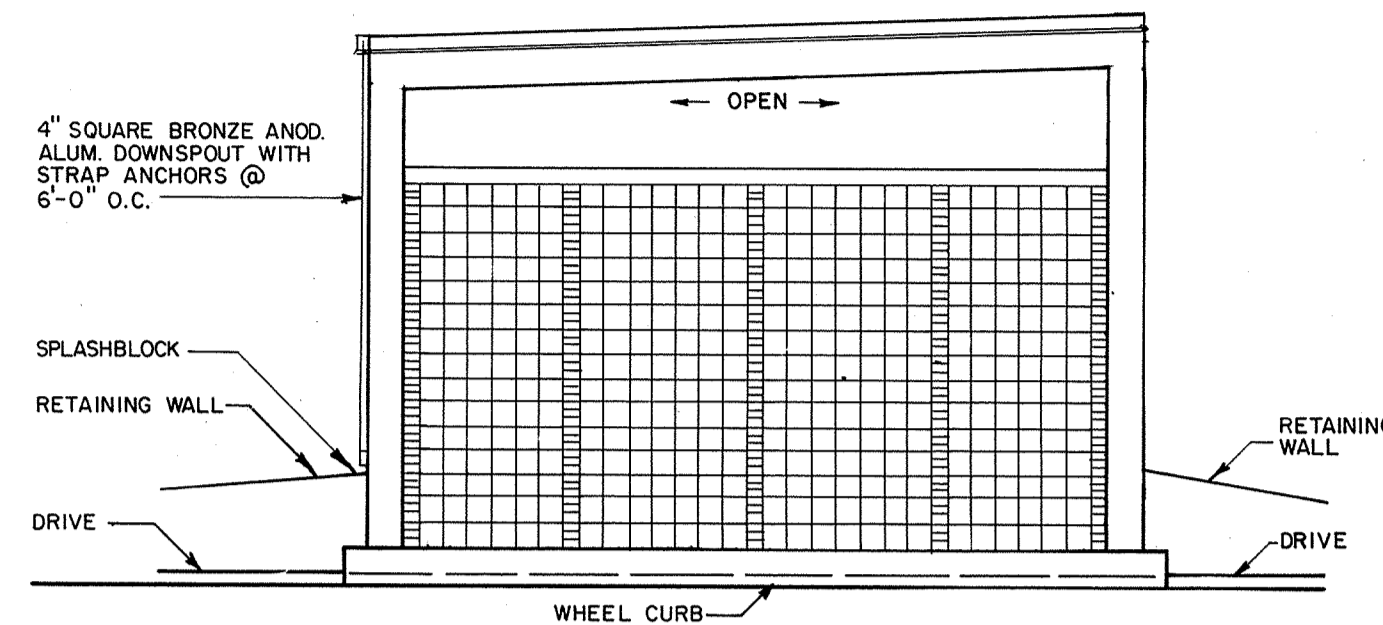
**EASTERN SUBREGIONAL WWTP - PHASE II**  
 FOR  
 ORANGE COUNTY, FLORIDA

**SLUDGE DEWATERING BLDG.- PLANS & DETAILS**

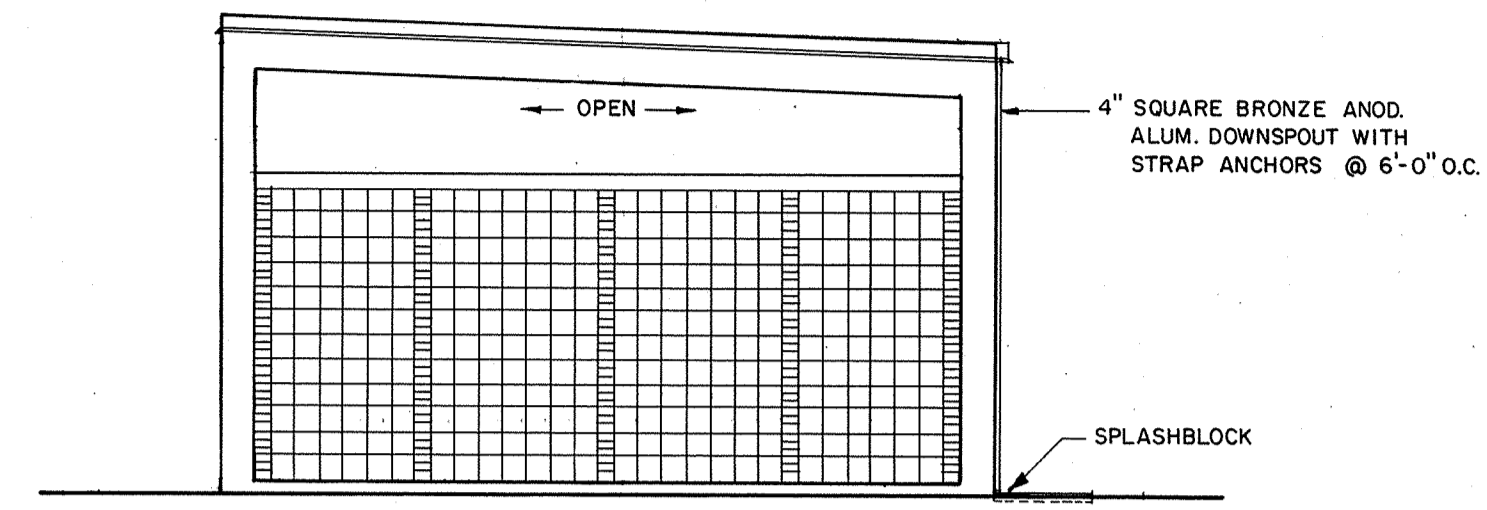
PROJECT NO. 6059-207  
 SHEET NO. A-1



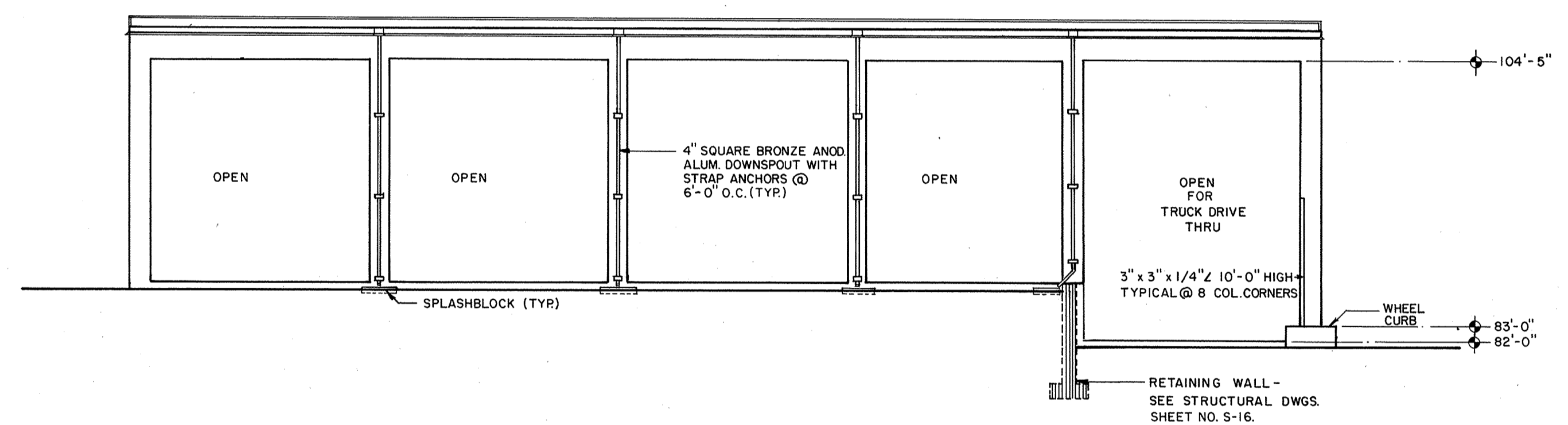
**RECORD DRAWING**



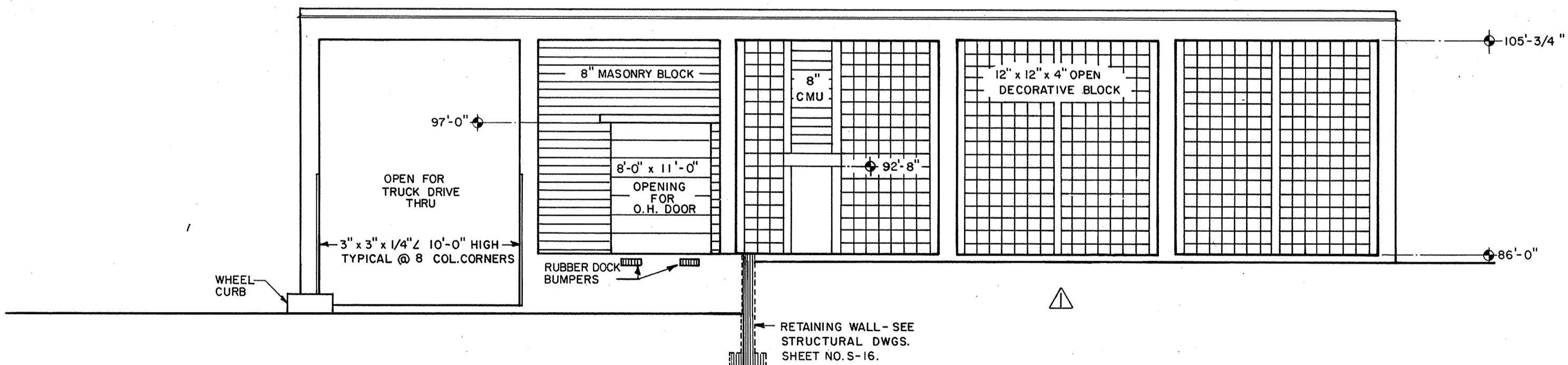
**NORTH ELEVATION**  
1/8"=1'-0"



**SOUTH ELEVATION**  
1/8"=1'-0"



**EAST ELEVATION**  
1/8"=1'-0"



**WEST ELEVATION**  
1/8"=1'-0"

REV	NO	DATE	BY	CHKD	REMARKS
1		6/83	R.V.		REVISED PER ADDENDUM NO. 1
2		12/84	ALN		RECORD DRAWING

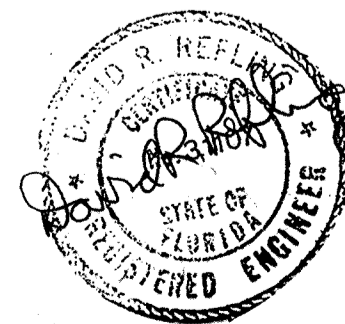
DESIGNED BY: D.J.B.  
 DRAWN BY: K.A.F.  
 CHECKED BY: [Signature]  
 APPROVED BY: [Signature]  
 DATE: MAR 1983

**CAMP DRESSER & MCKEE INC.**  
 ARCHITECTS, ENGINEERS, PLANNERS & MANAGEMENT CONSULTANTS  
**CDM**

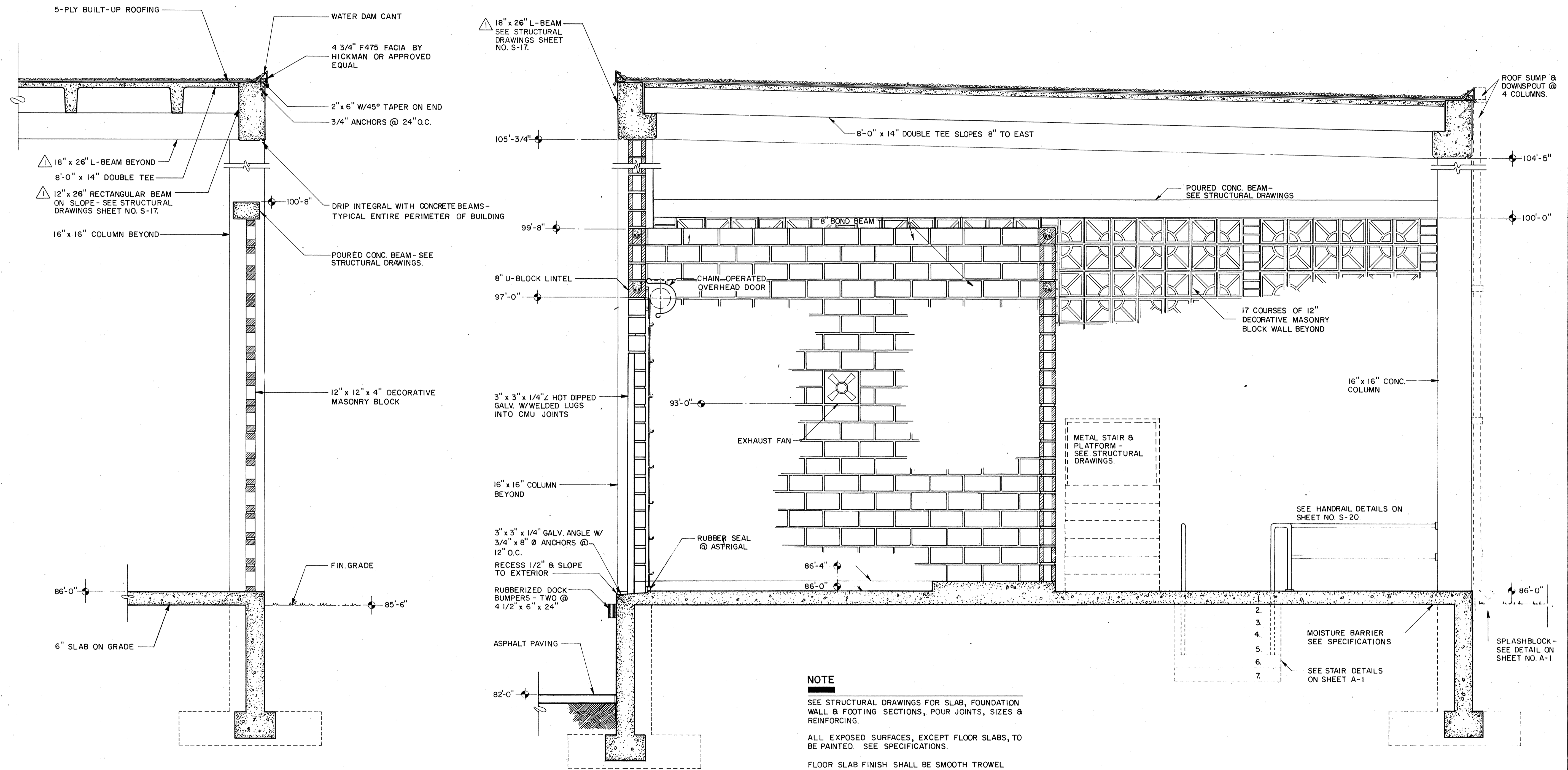
**EASTERN SUBREGIONAL WWTP - PHASE II**  
 FOR ORANGE COUNTY, FLORIDA  
**SLUDGE DEWATERING BLDG. - ELEVATIONS & DETAILS**

PROJECT NO.  
6059-207

SHEET NO.  
**A-2**



**RECORD DRAWING**



SECTION 2  
1/2" = 1'-0"  
A-1 A-3

SECTION 1  
1/2" = 1'-0"  
A-1 A-3

**NOTE**

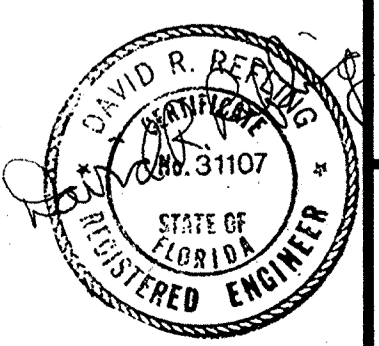
SEE STRUCTURAL DRAWINGS FOR SLAB, FOUNDATION WALL & FOOTING SECTIONS, POUR JOINTS, SIZES & REINFORCING.

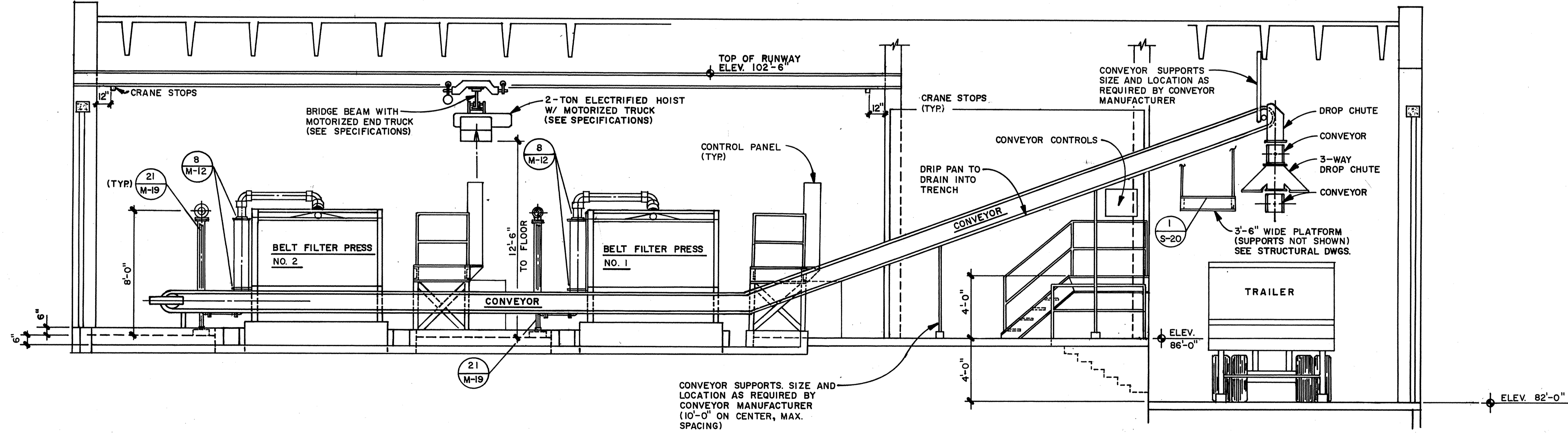
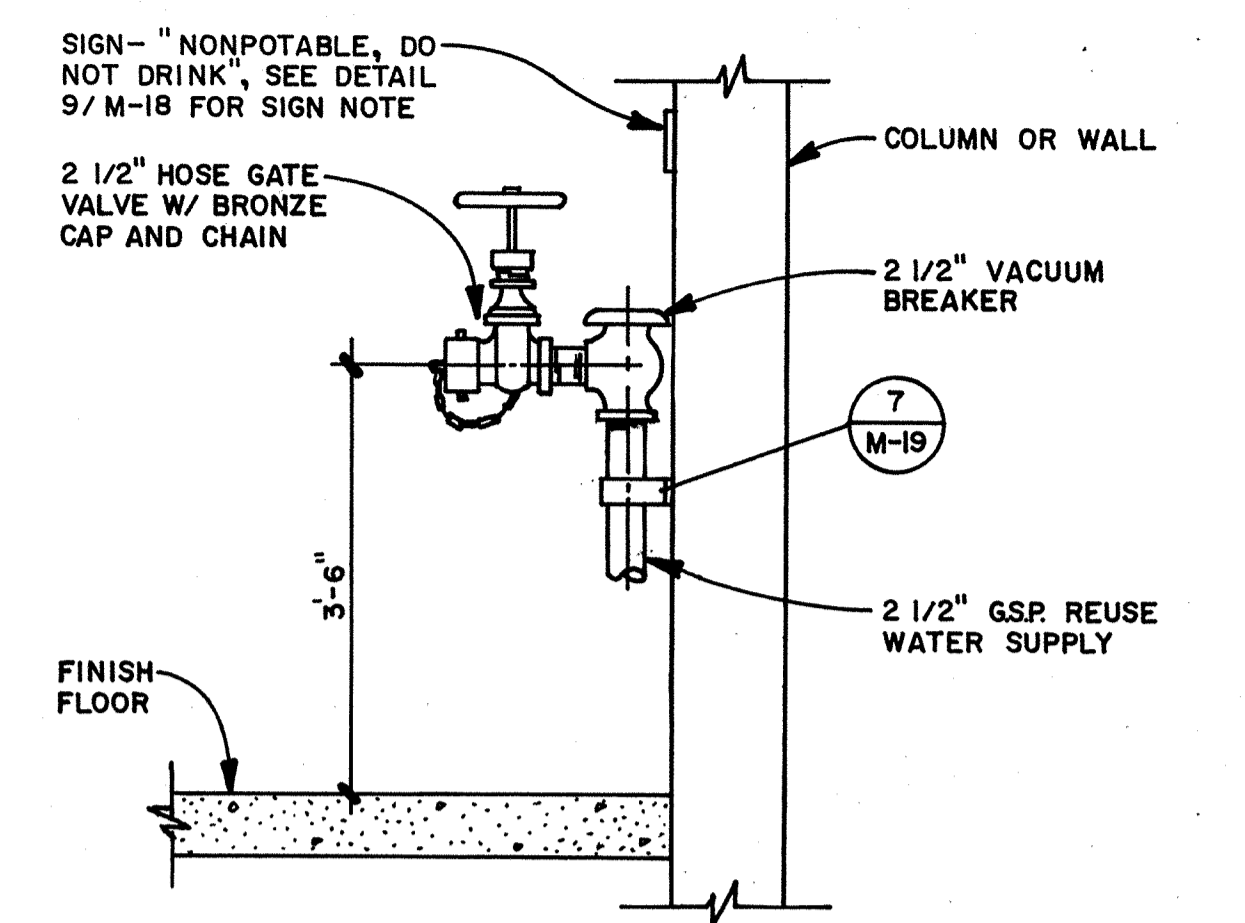
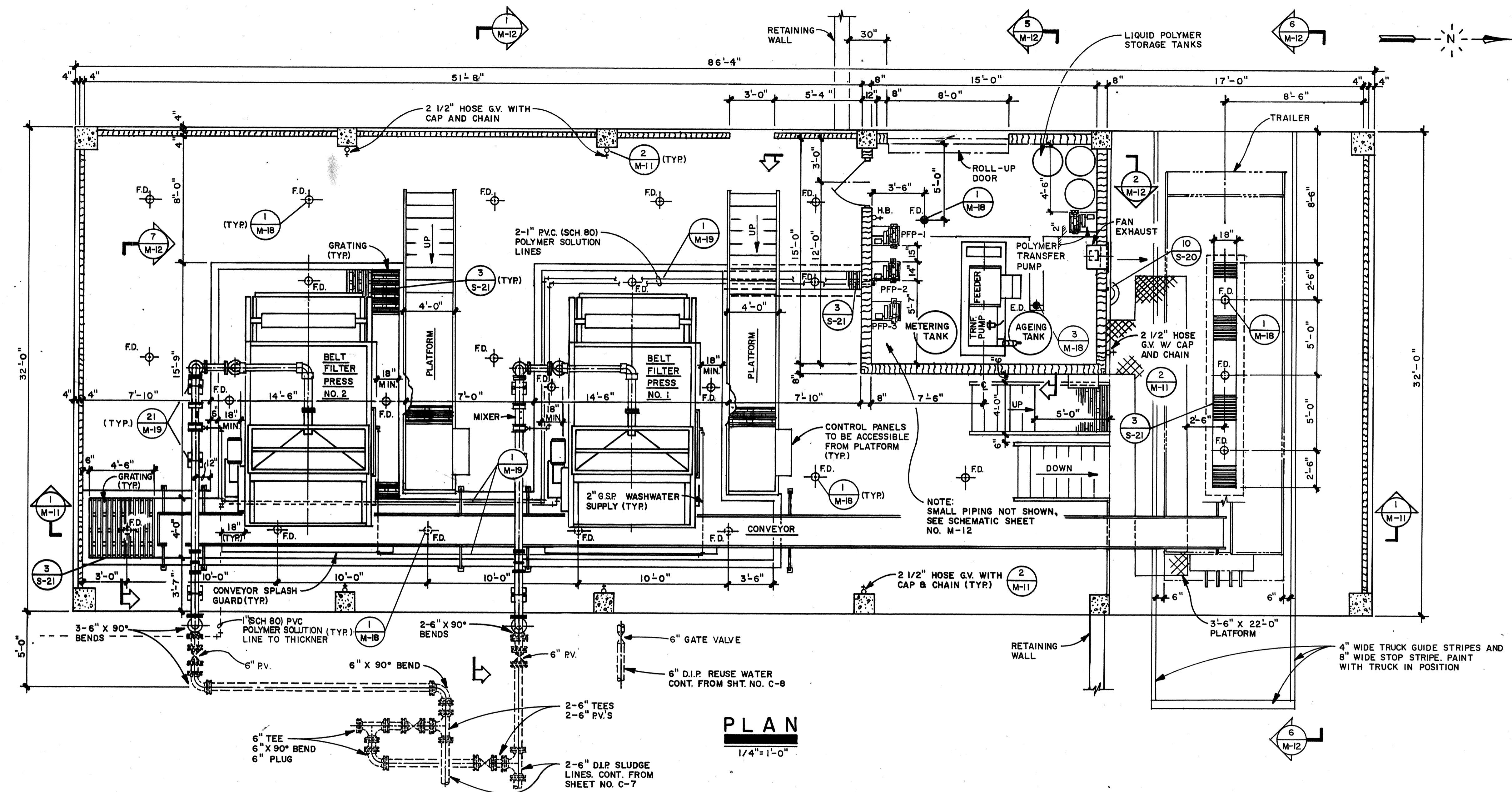
ALL EXPOSED SURFACES, EXCEPT FLOOR SLABS, TO BE PAINTED. SEE SPECIFICATIONS.

FLOOR SLAB FINISH SHALL BE SMOOTH TROWEL FINISHED & SHALL RECEIVE A HARDENING AGENT (SEE SPECIFICATIONS)

REMARKS	CHKD	CHKD	REVISD PER ADDENDUM NO. 1
	DRWN	BKM	RECORD DRAWING
DATE	6/83	12/84	
REV	NO	NO	NO
DESIGNED BY: D.J.B.	DRAWN BY: K.A.F.	CHECKED BY: J.R.C.	APPROVED BY: J.R.C.
DATE: MAR. 1983			
<b>CDM</b> environmental engineers, scientists, planners, & management consultants			
<b>CAMP DRESSER &amp; MCKEE INC.</b>			
<b>EASTERN SUBREGIONAL WWTP - PHASE II</b> FOR ORANGE COUNTY, FLORIDA <b>SLUDGE DEWATERING BLDG. - DETAILS</b>			
PROJECT NO.	6059-207		
SHEET NO.	A-3		

RECORD DRAWING





**NOTE**  
CONTRACTOR TO INSTALL 1 1/2" SAMPLE COCK ON EACH 6" D.I.P. SLUDGE LINES PRIOR TO POLYMER INJECTION RING, 3/4" SAMPLE COCKS ON EACH 1" P.V.C. POLYMER SOLUTION LINES, REUSE WATER LINE FOR POLYMER DILUTION AND EACH 2" P.V.C. WASHWATER SUPPLY LINES.

REMARKS	RECORD DRAWING
DESIGNED BY: W.M.S.	DATE: 12/84
DRAWN BY: K.J.H.	ALN
CHECKED BY: D.G.P.	
APPROVED BY: [Signature]	
DATE: MARCH 1983	

**CDM**  
environmental engineers, scientists, planners, & management consultants

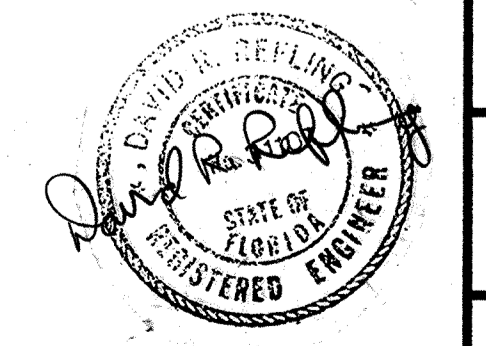
**CAMP DRESSER & MCKEE INC.**

**EASTERN SUBREGIONAL WWTP - PHASE II**  
FOR  
ORANGE COUNTY, FLORIDA

**SLUDGE DEWATERING - PLAN & SECTIONS**

PROJECT NO. 6059-207

SHEET NO. **M-11**



**RECORD DRAWING**





**A SECTION**  
SCALE: NONE

SEE NOTES 2&3

SEE NOTE 1



**B SECTION**  
SCALE: NONE

SEE NOTES 2&3

SEE NOTE 1

**NOTES:**

1. FOLLOWING SUBSTANTIAL COMPLETION OF PROCESS 650, DEMOLISH BELT CONVEYORS, STRUCTURAL SUPPORTS & ALL ASSOCIATED APPURTENANCES, TYP.
2. FOLLOWING SUBSTANTIAL COMPLETION OF PROCESS 650, DEMOLISH 6 WAS AND INSTALL 6" CAP OR 6" BF 6" AFG, TYP. REF PROCESS 630.
3. CONTRACTOR TO PROVIDE TEMPORARY PIPE, VALVES AND APPURTENANCES TO MAINTAIN SERVICE DURING CONSTRUCTION. REF PROCESS 630.

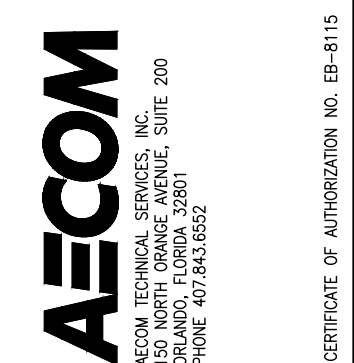
PATH: I:\NAME: X\ORANGE COUNTY\EASTERN WRF\60276218.E\WRF\_CENTRIFUGES\000 CAD\SHEETS\000-640-301.DWG  
 LAST UPDATE: Monday, September 23, 2013 3:28:01 PM  
 PLOTTED: robertsonq  
 ANSI D - 23-Sep-13

ORANGE COUNTY UTILITIES DEPARTMENT  
 EASTERN WATER RECLAMATION FACILITY  
 CENTRIFUGE DEWATERING IMPROVEMENTS  
**BELT FILTER PRESS DEWATERING BUILDING  
 DEMOLITION SECTIONS**  
 MECHANICAL PROCESS

PROJECT NO:	60276218
CAD DWG FILE:	D-640-301
DESIGNED BY:	WDM
DRAWN BY:	QRR
DEPT CHECK:	CFE
PROJ CHECK:	MDC
DATE:	OCTOBER 2013
SCALE:	AS NOTED

**D-640-301**

56 OF 114



AECOM TECHNICAL SERVICES, INC.  
 10000 BOULEVARD, SUITE 200  
 ORLANDO, FLORIDA 32801  
 PHONE: 407.843.6522

WILLIAM D. MARSHALL, PE  
 FLORIDA PROFESSIONAL LICENSE NO. 66982

MARK	DATE	MADE BY	CHECKED	DESCRIPTION