

ORANGE COUNTY UTILITIES DRAWINGS FOR SOUTH WATER RECLAMATION FACILITY PHASE V IMPROVEMENTS

BOARD OF COUNTY COMMISSIONERS

	TERESA JACOBS MAYOR	
S. SCOTT BOYD DISTRICT 1		JENNIFER THOMPSON DISTRICT 4
FREDDRICK BRUMMER DISTRICT 2		TED EDWARDS DISTRICT 5
PETE CLARKE DISTRICT 3		TIFFANY MOORE RUSSELL DISTRICT 6
	AJIT LALCHANDANI COUNTY ADMINISTRATOR	
	RAYMOND E. HANSON, PE UTILITIES DEPARTMENT DIRECTOR	



OWNER

ORANGE COUNTY UTILITIES
9150 CURRY FORD ROAD
ORLANDO, FL 32825

CONSTRUCTION INSPECTION DIVISION:	407-254-9798
WATER RECLAMATION DIVISION:	407-254-9680
WATER DIVISION:	407-254-9850
UTILITIES ENGINEERING:	407-254-9900
UTILITIES ENGINEERING FAX:	407-254-9999
ADVANCED NOTIFICATION OF WATER CONNECTIONS:	407-836-6800
ADVANCED NOTIFICATION OF WASTEWATER CONNECTIONS:	407-254-9680
PUMP STATION OPERATION AND SHUTDOWN:	407-254-9798
ORANGE COUNTY DISPATCH (24 HOUR ASSISTANCE):	407-836-2777
RISK MANAGEMENT	407-836-9638

JULY 2015

BID ISSUE

SEQUENCE NUMBER: 41285

CAPITAL UNIT/SUBUNIT NUMBER: 1555-01

B&V PROJECT NUMBER: 180761



EPIC
ENGINEERING & CONSULTING GROUP, LLC
3251 PROGRESS DRIVE, SUITE A103
ORLANDO, FLORIDA 32826
PHONE 407.381.3742
CERTIFICATE OF AUTHORIZATION NO. 27573



Electrical Design Associates
INC.

4763 CONWAY RD, STE. E
ORLANDO, FLORIDA 32812
PHONE: (407) 745-5604
FAX: (561) 819-5557
C.O.A. No. 8079
LILLIAN M. REYES, P.E.
Florida P.E. No. 50780



BLACK & VEATCH
Building a world of difference.

Black & Veatch Corporation
201 South Orange Avenue, Suite 500
Orlando, Florida 32801 Certificate No. 8132



AECOM TECHNICAL SERVICES, INC.
150 NORTH ORANGE AVENUE, SUITE 200
ORLANDO, FLORIDA 32801
PHONE 407.843.6552

CERTIFICATE OF AUTHORIZATION NO. EB-8115



BORRELLI + PARTNERS
ARCHITECTURE PLANNING LANDSCAPE INTERIOR
ACC 000711

720 VASSAR STREET ORLANDO, FL. 32804
(407) 418-1338

DRAWING LIST

1 COVER SHEET

GENERAL

- G-1 DRAWING LIST
G-2 SYMBOLS AND DESIGNATION LEGENDS
G-3 ABBREVIATIONS
G-4 NOTES AND FLOW STREAM IDENTIFICATION
G-5 SITE LOCATION MAPS
G-6 OVERALL SITE PLAN
G-7 HYDRAULIC PROFILE
G-8 NORTH PLANT LIQUID - PROCESS SCHEMATIC
G-9 NORTH PLANT LIQUID - PROCESS SCHEMATIC
G-10 SOLIDS SYSTEM - PROCESS SCHEMATIC

DEMOLITION

- D-1 OVERALL SITE PLAN & KEY MAP
D-2 SITE PLAN - GRID 1
D-3 SITE PLAN - GRID 2
D-4 SITE PLAN - GRID 3
D-5 SITE PLAN - GRID 4
D-6 SITE PLAN - GRID 5
D-7 SITE PLAN - GRID 6
D-8 SITE PLAN - GRID 7
D-9 SITE PLAN - GRID 8
D-10 SITE PLAN - GRID 9
D-11 SITE PLAN - GRID 10
D-12 SITE PLAN - GRID 11
D-13 SITE PLAN - GRID 12
D-14 SITE PLAN - GRID 13
D-15 SITE PLAN - GRID 14
D-16 SITE PLAN - GRID 15
D-17 SITE PLAN - GRID 16
D-18 SITE PLAN - GRID 17
D-19 MECHANICAL - INFLUENT PUMP STATION - PLAN
D-20 MECHANICAL - INFLUENT PUMP STATION - SECTION
D-21 MECHANICAL - PRELIMINARY TREATMENT FACILITY - LOWER LEVEL PLAN
D-22 MECHANICAL - PRELIMINARY TREATMENT FACILITY - UPPER LEVEL PLAN
D-23 MECHANICAL - NORTH PLANT GRIT CHAMBER - PLAN, SECTIONS AND DETAILS
D-24 STRUCTURAL - NORTH PLANT GRIT CHAMBER - PLAN AND SECTIONS
D-25 STRUCTURAL - NORTH PLANT GRIT CHAMBER - SECTIONS AND DETAILS
D-26 MECHANICAL - NORTH PLANT NO. 1 (N1) - PLAN
D-27 STRUCTURAL - NORTH PLANT NO. 1 (N1) - PLAN AND SECTIONS
D-28 MECHANICAL - NORTH PLANT NO. 2 (N2) - PLAN
D-29 STRUCTURAL - NORTH PLANT NO. 2 (N2) - LOWER PLAN
D-30 STRUCTURAL - NORTH PLANT NO. 2 (N2) - UPPER PLAN
D-31 MECHANICAL - NORTH PLANT NO. 2 (N2) - SECTIONS
D-32 STRUCTURAL - NORTH PLANT NO. 2 (N2) - SECTIONS
D-33 MECHANICAL - NORTH PLANT FILTERS - PLAN
D-34 STRUCTURAL - NORTH PLANT FILTERS - PLAN
D-35 STRUCTURAL - NORTH PLANT FILTERS - SECTIONS
D-36 STRUCTURAL - NORTH PLANT CHLORINE CONTACT CHAMBER - UPPER PLAN
D-37 MECHANICAL - OFF-SPEC/PEAK STORAGE PUMP STATION - PLAN
D-38 MECHANICAL - DAF TANKS AND GBT FEED PUMPS - PLAN
D-39 MECHANICAL - DEWATERING BUILDING - GRAVITY BELT THICKENERS AND POLYMER ROOM - PLAN
D-40 MECHANICAL - DEWATERING BUILDING - CENTRIFUGE/BELT FILTER PRESS AREA PLAN
D-41 STRUCTURAL - DEWATERING BUILDING - CENTRIFUGE/BELT FILTER PRESS LOWER PLAN
D-42 STRUCTURAL - DEWATERING BUILDING - CENTRIFUGE/BELT FILTER PRESS UPPER PLAN
D-43 MECHANICAL - DEWATERING BUILDING - TRUCK LOADING AREA - ROOF PLAN AND SECTION

CIVIL

- C-1 HORIZONTAL/VERTICAL CONTROL PLAN
C-2 PAVING, GRADING AND DRAINAGE - GRID 1
C-3 PAVING, GRADING AND DRAINAGE - GRID 2
C-4 PAVING, GRADING AND DRAINAGE - GRID 3
C-5 PAVING, GRADING AND DRAINAGE - GRID 4
C-6 PAVING, GRADING AND DRAINAGE - GRID 5
C-7 PAVING, GRADING AND DRAINAGE - GRID 6
C-8 PAVING, GRADING AND DRAINAGE - GRID 7
C-9 PAVING, GRADING AND DRAINAGE - GRID 8
C-10 PAVING, GRADING AND DRAINAGE - GRID 9
C-11 PAVING, GRADING AND DRAINAGE - GRID 10
C-12 PAVING, GRADING AND DRAINAGE - GRID 11
C-13 PAVING, GRADING AND DRAINAGE - GRID 12
C-14 PAVING, GRADING AND DRAINAGE - GRID 13
C-15 PAVING, GRADING AND DRAINAGE - GRID 14
C-16 PAVING, GRADING AND DRAINAGE - GRID 15
C-17 PAVING, GRADING AND DRAINAGE - GRID 16
C-18 PAVING, GRADING AND DRAINAGE - GRID 17
C-19 YARD PIPING - GRID 1
C-20 YARD PIPING - GRID 2
C-21 YARD PIPING - GRID 3
C-22 YARD PIPING - GRID 4
C-23 YARD PIPING - GRID 5
C-24 YARD PIPING - GRID 6
C-25 YARD PIPING - GRID 7
C-26 YARD PIPING - GRID 8
C-27 YARD PIPING - GRID 9
C-28 YARD PIPING - GRID 10
C-29 YARD PIPING - GRID 11
C-30 YARD PIPING - GRID 12
C-31 YARD PIPING - GRID 13
C-32 YARD PIPING - GRID 14
C-33 YARD PIPING - GRID 15
C-34 YARD PIPING - GRID 16
C-35 YARD PIPING - GRID 17
C-36 YARD PIPING UTILITY NOTES & EQ POND JUNCTION BOX ENLARGED PLAN
C-37 YARD PIPING DATA TABLE
C-38 UTILITY CROSSING TABLE
CD-1 DETAILS
CD-2 DETAILS
CD-3 DETAILS
CD-4 DETAILS
CD-5 DETAILS
CD-6 DETAILS
CD-7 DETAILS
CD-8 DETAILS

ARCHITECTURAL

- A-1 SOUTH BLOWER BUILDING - ARCHITECTURAL INFORMATION
A-2 SOUTH BLOWER BUILDING - FLOOR/LIFE SAFETY PLAN AND REFLECTED CEILING PLAN
A-3 SOUTH BLOWER BUILDING - ROOF PLAN AND DETAILS
A-4 SOUTH BLOWER BUILDING - EXTERIOR ELEVATIONS
A-5 SOUTH BLOWER BUILDING - BUILDING AND WALL SECTIONS
A-6 SOUTH BLOWER BUILDING - DOOR SCHEDULE AND DETAILS
A-7 GUARDHOUSE - FLOOR PLAN AND BOLT LAYOUT PLAN
A-8 GUARDHOUSE - EXTERIOR ELEVATIONS
A-9 GUARDHOUSE - ROOF PLAN AND WALL SECTION
A-10 DEWATERING BUILDING - MODIFICATIONS
A-10-A PEC-1 BUILDING - LIFE SAFETY PLAN - PEC-2 & PEC-3 SIMILAR

STRUCTURAL

- S-1 ABBREVIATIONS AND NOTES
S-2 INFLUENT PUMP STATION - PLAN
S-3 PRELIMINARY TREATMENT FACILITY - PLAN
S-4 NORTH PLANT NO.1 IR PUMP STATION - FOUNDATION AND TOP PLANS
S-5 NORTH PLANT NO.1 IR PUMP STATION - SECTIONS AND DETAILS
S-6 NORTH PLANT NO.2 - BNR BASIN - FOUNDATION PLAN
S-7 NORTH PLANT NO.2 - BNR BASIN - TOP PLAN
S-8 NORTH PLANT NO.2 - BNR BASIN - ENLARGED PLANS
S-9 NORTH PLANT NO.2 - BNR BASIN - SECTIONS I
S-10 NORTH PLANT NO.2 - BNR BASIN - SECTIONS II
S-11 NORTH PLANT NO.2 - BNR BASIN - SECTIONS III
S-12 NORTH PLANT NO.2 - BNR BASIN - SECTIONS IV
S-13 NORTH PLANT NO.2 - BNR BASIN - SECTIONS V
S-14 SOUTH PLANT BLOWER BUILDING - FOUNDATION PLAN
S-15 SOUTH PLANT BLOWER BUILDING - SLAB PLAN
S-16 SOUTH PLANT BLOWER BUILDING - ROOF PLAN
S-17 SOUTH PLANT BLOWER BUILDING - SECTIONS I
S-18 SOUTH PLANT BLOWER BUILDING - SECTIONS II
S-19 SOUTH PLANT BLOWER BUILDING - SECTIONS III
S-20 NORTH CLARIFIER NO.3 - FOUNDATION PLAN AND TOP PLAN
S-21 NORTH CLARIFIER NO.3 - ENLARGED PLANS, SECTIONS AND DETAILS
S-22 NORTH CLARIFIER NO.3 - SECTIONS
S-23 NORTH CLARIFIER NO.3 RATE OF FLOW CONTROLLER - PLANS AND SECTIONS
S-24 NORTH PLANT FILTERS AND CHLORINE CONTACT BASIN FOUNDATION PLAN
S-25 NORTH PLANT FILTERS AND CHLORINE CONTACT BASIN TOP PLAN
S-26 NORTH PLANT FILTERS AND CHLORINE CONTACT BASIN SECTIONS I
S-27 NORTH PLANT FILTERS AND CHLORINE CONTACT BASIN SECTIONS II
S-28 NORTH PLANT CHLORINE CONTACT BASIN - PLAN
S-29 NORTH PLANT TRANSFER PUMP STATION - FOUNDATION AND TOP PLANS
S-30 NORTH PLANT TRANSFER PUMP STATION - SECTIONS AND DETAILS
S-31 EQUALIZATION PUMP STATION - FOUNDATION AND TOP PLANS
S-32 EQUALIZATION PUMP STATION - SECTIONS AND DETAILS
S-33 GRAVITY BELT THICKENER AND POLYMER ROOM - PLAN
S-34 CENTRIFUGE AND BELT FILTER PRESS - PLAN
S-35 CENTRIFUGE - ENLARGED PLAN, SECTION, AND DETAILS
S-36 BELT FILTER PRESS - ENLARGED PLAN AND SECTION
S-37 STANDBY ELECTRICAL GENERATORS - MISCELLANEOUS - PLANS, SECTIONS AND DETAILS
SD-1 STANDARD DETAILS I
SD-2 STANDARD DETAILS II
SD-3 STANDARD DETAILS III
SD-4 STANDARD DETAILS IV
SD-5 STANDARD DETAILS V
SD-6 STANDARD DETAILS VI
SD-7 STANDARD DETAILS VII
SD-8 SCHEDULES

MECHANICAL

- M-1 INFLUENT PUMP STATION - PLAN
M-2 INFLUENT PUMP STATION - SECTION
M-3 INFLUENT PUMP STATION - SECTION
M-4 PRELIMINARY TREATMENT FACILITY - LOWER LEVEL PLAN
M-5 PRELIMINARY TREATMENT FACILITY - UPPER LEVEL PLAN
M-6 PRELIMINARY TREATMENT FACILITY - SECTIONS
M-7 PRELIMINARY TREATMENT FACILITY - SECTIONS
M-8 NOT USED
M-9 NORTH PLANT NO.2 BNR BASIN - SECONDARY INFLUENT FLOW METER - PLANS AND SECTION
M-10 NORTH PLANT NO.1 - BNR BASIN - OVERALL PLAN
M-11 NORTH PLANT NO.1 - INTERNAL RECYCLE PS - ENLARGED PLAN, SECTION AND DETAILS
M-12 NORTH PLANT NO.2 - BNR BASIN - OVERALL PLAN
M-13 NORTH PLANT NO.2 - BNR BASIN - PARTIAL PLAN
M-14 NORTH PLANT NO.2 - BNR BASIN - PARTIAL PLAN
M-15 BNR BASIN AND MIXED LIQUOR SPLITTER BOX - ENLARGED PLAN, SECTIONS AND DETAILS
M-16 BNR BASIN - SECTIONS AND DETAILS
M-17 SOUTH PLANT BLOWER BUILDING - PLAN
M-18 SOUTH PLANT BLOWER BUILDING - SECTIONS AND DETAILS
M-19 NORTH CLARIFIERS 1 & 2 RAS PUMPING STATION - MODIFICATION PLANS
M-20 NORTH CLARIFIERS 1 & 2 RAS PUMPING STATION - PIPING MODIFICATIONS - SECTION AND DETAILS
M-21 NORTH CLARIFIER NO. 3 - OVERALL PLAN
M-22 NORTH CLARIFIER NO. 3 - RAS/WAS/SCUM PUMPING STATIONS
M-23 NORTH CLARIFIER NO. 3 - RAS PUMPING STATION PLAN
M-24 NORTH CLARIFIER NO. 3 - WAS & SCUM PUMPING STATIONS PLAN
M-25 NORTH CLARIFIER NO. 3 - RAS/WAS/SCUM PUMPING STATION SECTIONS
M-26 NORTH CLARIFIER NO. 3 - PLAN
M-27 NORTH CLARIFIER NO. 3 - SECTION AND DETAILS
M-28 NORTH CLARIFIER NO. 3 - DETAILS
M-29 NORTH CLARIFIER NO. 3 - DETAILS
M-30 NORTH CLARIFIER NO. 3 - DETAILS
M-31 NORTH PLANT FILTERS & CHLORINE CONTACT BASIN - PLAN
M-32 NORTH PLANT FILTERS & CHLORINE CONTACT BASIN - ENLARGED PLANS, SECTIONS AND DETAILS
M-33 NORTH PLANT TRANSFER PUMPING STATION - PLAN
M-34 NORTH PLANT TRANSFER PUMPING STATION - SECTION AND DETAILS
M-35 GROUND STORAGE TANK NO.1 & NO.2 - PLAN
M-36 GROUND STORAGE TANK NO.3 - PLAN
M-37 GROUND STORAGE TANK NO.4 - PLAN
M-38 SOUTH PLANT OFF-SPEC WATER STORAGE TANK - DETAILS
M-39 SOUTH PLANT OFF-SPEC WATER STORAGE TANK - DETAILS
M-40 SOUTH PLANT OFF-SPEC WATER STORAGE TANK - DETAILS
M-41 SOUTH PLANT OFF-SPEC WATER STORAGE TANK - DETAILS
M-42 SOUTH PLANT OFF-SPEC WATER STORAGE TANK - DETAILS
M-43 SOUTH PLANT OFF-SPEC WATER STORAGE TANK - DETAILS
M-44 EQUALIZATION PUMPING STATION - PLAN
M-45 EQUALIZATION PUMPING STATION - SECTIONS
M-46 WAS TANKS AND GBT FEED PUMPS - PLAN, SECTIONS AND DETAILS
M-47 DEWATERING BUILDING - OVERALL PLAN
M-48 DEWATERING BUILDING - GRAVITY BELT THICKENERS AND POLYMER ROOM - PLAN
M-49 DEWATERING BUILDING - CENTRIFUGE/BELT FILTER PRESS AREA - PLAN
M-50 DEWATERING BUILDING - GRAVITY BELT THICKENERS AND POLYMER ROOM - SECTIONS
M-51 DEWATERING BUILDING - CENTRIFUGE/BELT FILTER PRESS AREA - SECTIONS
M-52 DEWATERING BUILDING - TRUCK LOADING AREA - ROOF PLAN AND SECTION
M-53 DEWATERING BUILDING - DETAILS
M-54 STANDBY ELECTRICAL GENERATORS - UPPER AND LOWER PLANS
M-55 STANDBY ELECTRICAL GENERATORS - FUEL OIL PIPING - PLANS, SECTIONS AND DETAILS
M-56 STANDBY ELECTRICAL GENERATORS - GAS PIPING - PLANS, SECTIONS AND DETAILS
M-57 STANDBY ELECTRICAL GENERATORS - MISCELLANEOUS - PLANS, SECTIONS AND DETAILS
MD-1 DETAILS
MD-2 DETAILS
MD-3 DETAILS
MD-4 DETAILS
MD-5 DETAILS

HVAC

- H-1 LEGEND, ABBREVIATIONS AND GENERAL NOTES
H-2 SOUTH PLANT BLOWER BUILDING - PLAN
H-3 SCHEDULES, DETAILS AND SEQUENCE OF OPERATION

ELECTRICAL

- E-1 NOTES, SYMBOLS AND ABBREVIATIONS
E-2 OVERALL SITE PLAN
E-3 PARTIAL SITE PLAN-1
E-4 PARTIAL SITE PLAN-2
E-5 PARTIAL SITE PLAN-3
E-6 13KV MAIN SWITCHGEAR - SINGLE LINE DIAGRAM
E-7 SOUTH BLOWER BUILDING 5KV 'SWGR-SB' - SINGLE LINE DIAGRAM
E-8 'MCC-OSA' & 'MCC-OSB' - SINGLE LINE DIAGRAMS
E-9 EFFLUENT PUMP STATION OVERALL - SINGLE LINE DIAGRAMS
E-10 WEST ELECTRICAL BUILDING 5KV SWITCHGEAR - 'SWGR-BP' SINGLE LINE DIAGRAM
E-11 NORTH PLANT SWITCHGEAR 'SWGR-WP' - SINGLE LINE DIAGRAM
E-12 'DP-USOA' & 'DP-USQB' - SINGLE LINE DIAGRAM
E-13 'MCC-USAA' AND 'MCC-USAB' - SINGLE LINE DIAGRAM
E-14 'DP-USBS' & 'DP-USBA' - SINGLE LINE DIAGRAMS
E-15 'MCC-USFA' AND 'MCC-USFB' - SINGLE LINE DIAGRAM
E-16 'MCC-MPSA' AND 'MCC-MPSB' - SINGLE LINE DIAGRAM
E-17 'MCC-USLA' AND 'MCC-USLB' - SINGLE LINE DIAGRAM
E-18 'MCC-USKA' SINGLE LINE DIAGRAM
E-19 'MCC-USKB' SINGLE LINE DIAGRAM
E-20 'MCC-USRA' - SINGLE LINE DIAGRAM
E-21 'MCC-USRB' - SINGLE LINE DIAGRAM
E-22 'USWA' & 'USWB' SINGLE LINE DIAGRAMS
E-23 'USNA' - SINGLE LINE DIAGRAM
E-24 'USNB' - SINGLE LINE DIAGRAM
E-25 'MCC-USOA' & 'MCC-USOB' - SINGLE LINE DIAGRAM
E-26 'MCC-USPA' & 'MCC-USPB' - SINGLE LINE DIAGRAM
E-27 'MCC-USTA' & 'MCC-USTB' - SINGLE LINE DIAGRAMS
E-28 'MCC-USHA' & 'MCC-USHB' - SINGLE LINE DIAGRAM
E-29 MAINTENANCE BUILDING - SINGLE LINE DIAGRAM
E-30 LOAD TABULATIONS
E-31 EQUIPMENT FRONT VIEWS-1
E-32 EQUIPMENT FRONT VIEWS-2
E-33 EQUIPMENT FRONT VIEWS-3
E-34 EQUIPMENT FRONT VIEWS-4
E-35 EQUIPMENT FRONT VIEWS-5
E-36 EQUIPMENT FRONT VIEWS-6
E-37 EQUIPMENT FRONT VIEWS-7
E-38 NETWORK CONTROL BLOCK DIAGRAM
E-39 CENTRIFUGE CONTROL WIRING DIAGRAM
E-40 ELEMENTARY DIAGRAMS - SHEET 1
E-41 ELEMENTARY DIAGRAMS - SHEET 2
E-42 ELEMENTARY DIAGRAMS - SHEET 3
E-43 ELEMENTARY DIAGRAMS - SHEET 4
E-44 ELEMENTARY DIAGRAMS - SHEET 5
E-45 ELEMENTARY DIAGRAMS - SHEET 6
E-46 ELEMENTARY DIAGRAMS - SHEET 7
E-47 CENTRIFUGE ELEMENTARY DIAGRAMS
E-48 BFP MAIN CONTROL PANEL ELEMENTARY DIAGRAM
E-49 ELEMENTARY DIAGRAMS
E-50 POWER GENERATION/MCC BUILDING - ELECTRICAL PLAN
E-51 SOUTH PLANT BLOWER BUILDING/ELECTRICAL ROOM - POWER PLAN
E-52 SOUTH PLANT BLOWER BUILDING/ELECTRICAL ROOM - LIGHTING PLAN
E-53 SOUTH PLANT BLOWER BUILDING/ELECTRICAL ROOM - LIGHTNING PROTECTION ROOF PLAN
E-54 EQUALIZATION PUMP STATION - ELECTRICAL PLAN
E-55 GROUND STORAGE TANKS NO. 1 & NO. 2
E-56 GROUND STORAGE TANKS NO. 3 & NO. 4
E-57 EXISTING WEST ELECTRICAL BUILDING & NORTH BLOWER BUILDING
E-58 EXISTING WEST ELECTRICAL BUILDING
E-59 NORTH PLANT NO. 1 DEMOLITION PLAN
E-60 NORTH PLANT NO. 2 DEMOLITION
E-61 NORTH PLANT NO. 1 BNR BASIN
E-62 NORTH PLANT NO. 2 - BNR BASIN - PARTIAL PLAN-1
E-63 NORTH PLANT NO. 2 - BNR BASIN - PARTIAL PLAN-2
E-64 NORTH PLANT NO. 1 INTERNAL RECYCLE PUMPING & N2 SCUM PUMPING STATION PLAN
E-65 INFLUENT PUMPING STATION UPPER LEVEL
E-66 PRE-TREATMENT FACILITY - LOWER LEVEL - DEMOLITION
E-67 PRE-TREATMENT FACILITY - UPPER LEVEL - DEMOLITION
E-68 PRE-TREATMENT FACILITY - LOWER LEVEL
E-69 PRE-TREATMENT FACILITY - UPPER LEVEL
E-70 NORTH PLANT ELECTRICAL BUILDING & N. PLANT CLARIFIER NO. 3 RAS/WAS POWER EQUIPMENT CENTER-3 (PEC-3)
E-71 NP CLARIFIER NO. 3 RAS/WAS POWER EQUIPMENT CENTER-3 (PEC-3) - LIGHTING & LIGHTNING PROTECTION PLAN
E-72 NORTH CLARIFIERS NO.1 & NO.2 AND RAS PUMPING STATION
E-73 NORTH CLARIFIER NO.3 ELECTRICAL PLAN
E-74 NORTH CLARIFIER NO.3 - LIGHTNING PROTECTION/GROUNDING PLAN
E-75 NORTH PLANT NO. 2 RATE OF FLOW CONTROLLER - ELECTRICAL PLAN
E-76 NORTH PLANT FILTERS DEMOLITION PLAN
E-77 NORTH PLANT FILTERS
E-78 4160V EFFLUENT BLDG. PUMP ROOM
E-79 NPTPS POWER EQUIPMENT CENTER-2 (PEC-2) - POWER PLAN & NPTPS PLAN
E-80 NPTPS POWER EQUIPMENT CENTER-2 (PEC-2) - LIGHTING & LIGHTNING PROTECTION PLAN
E-81 DEWATERING BUILDING ELECTRICAL PLAN
E-82 DEWATERING BUILDING ELECTRICAL ROOM - DEMOLITION PLAN
E-83 DEWATERING BUILDING ELECTRICAL ROOM - PROPOSED PLAN
E-84 DEWATERING BUILDING DEMOLITION PLAN
E-85 DEWATERING BUILDING ELECTRICAL PLAN
E-86 DEWATERING BUILDING ELECTRICAL CONDUIT ROUTING PLAN
E-87 GRAVITY BELT THICKENER, POLYMER & ELECTRICAL ROOM
E-88 DEWATERING BUILDING ROOF - ELECTRICAL PLAN
E-89 GBT POWER EQUIPMENT CENTER-1 (PEC-1) - POWER PLAN
E-90 GBT POWER EQUIPMENT CENTER-1 (PEC-1) - LIGHTING & LIGHTNING PROTECTION PLAN
E-91 SLUDGE STORAGE TANKS AND SLUDGE TRANSFER PUMPS DEMOLITION PLAN
E-92 GRAVITY BELT THICKENERS - POWER PLAN
E-93 OLD INFLUENT PUMP STATION - LIGHTING PLANS
E-94 GUARDHOUSE MOTORIZED GATE - ELECTRICAL PLAN
E-95 GUARDHOUSE - ELECTRICAL PLAN
E-96 NORTH PLANT CHLORINE CONTACT CHAMBER - DEMOLITION PLAN & EQ POND STRUCTURE PLAN
E-97 SOUTHWEST ELECTRICAL BUILDING NO. 2 & OFF SPEC PEAK STORAGE PUMPING STATION
E-98 ABANDONED AT&T STRUCTURE - DEMOLITION PLAN
E-99 PANEL SCHEDULES-1
E-100 PANEL SCHEDULES-2
E-101 PANEL SCHEDULES-3
E-102 PANEL SCHEDULES-4
E-103 PANEL SCHEDULES-5
E-104 PANEL SCHEDULES-6
E-105 LIGHTING DETAILS
E-106 DETAILS-1
E-107 DETAILS-2
E-108 DETAILS-3
E-109 DETAILS-4

INSTRUMENTATION

- I-1 LEGEND AND ABBREVIATIONS - SHEET 1 OF 3
I-2 LEGEND AND ABBREVIATIONS - SHEET 2 OF 3
I-3 LEGEND AND ABBREVIATIONS - SHEET 3 OF 3
I-4 P&ID - PRELIMINARY TREATMENT - SCREENING EQUIPMENT
I-5 P&ID - PRELIMINARY TREATMENT - GRIT REMOVAL - SHEET 1 OF 3
I-6 P&ID - PRELIMINARY TREATMENT - GRIT REMOVAL - SHEET 2 OF 3
I-7 P&ID - PRELIMINARY TREATMENT - GRIT REMOVAL - SHEET 3 OF 3
I-8 P&ID - NORTH 1 PLANT AERATION TANKS
I-9 P&ID - NORTH 1 PLANT - INTERNAL RECYCLE PUMP STATION
I-10 P&ID - NORTH 2 PLANT AERATION TANKS
I-11 P&ID - NORTH PLANT CLARIFIERS - AND NORTH 2 RATE OF FLOW CONTROLLER
I-12 P&ID - NORTH PLANT CLARIFIER 1, 2 AND 3 - RAS/WAS PUMP STATION
I-13 P&ID - CLOTH DISK FILTERS
I-14 P&ID - NORTH PLANT - TRANSFER PUMP STATION
I-15 P&ID - EQUALIZATION PUMP STATION
I-16 P&ID - GROUND STORAGE TANKS - SHEET 1 OF 2
I-17 P&ID - GROUND STORAGE TANKS - SHEET 2 OF 2
I-18 P&ID - SOUTH BLOWERS
I-19 P&ID - GRAVITY BELT THICKENER SLUDGE FEED PUMPS
I-20 P&ID - GRAVITY BELT THICKENERS - SHEET 1 OF 2
I-21 P&ID - GRAVITY BELT THICKENERS - SHEET 2 OF 2
I-22 P&ID - BELT FILTER PRESSES 1 AND 2
I-23 P&ID - CENTRIFUGES 1 AND 2
I-24 P&ID - CAKE LOADING SYSTEM
I-25 P&ID - ENGINE GENERATOR
I-26 P&ID - NORTH PLANT BLOWERS
I-27 CONTROL BLOCK DIAGRAM - SHEET 1 OF 3
I-28 CONTROL BLOCK DIAGRAM - SHEET 2 OF 3
I-29 CONTROL BLOCK DIAGRAM - SHEET 3 OF 3
I-30 DETAILS SHEET 1 - SOUTH BLOWER LUBE OIL SYSTEM
I-31 DETAILS SHEET 2 - MISCELLANEOUS INSTRUMENTS
I-32 DETAILS SHEET 3 - MISCELLANEOUS INSTRUMENTS
I-33 DETAILS SHEET 4 - BELT PRESS PLC PANEL DETAILS
I-34 DETAILS SHEET 5 - BELT PRESS RIO PANEL DETAILS
I-35 DETAILS SHEET 6 - PLC PANEL SHEET 1 OF 2
I-36 DETAILS SHEET 7 - PLC PANEL SHEET 2 OF 2

REFERENCE DRAWINGS

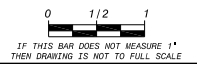
- EASTERN SUBREGIONAL WWTP - PHASE II
A-1 SLUDGE DEWATERING BLDG. - PLANS & DETAILS
A-2 SLUDGE DEWATERING BLDG. - ELEVATIONS & DETAILS
A-3 SLUDGE DEWATERING BLDG. - DETAILS
M-11 SLUDGE DEWATERING - PLAN & SECTIONS
EASTERN WATER RECLAMATION FACILITY - CENTRIFUGE DEWATERING BUILDING IMPROVEMENTS
D-640-101 BELT FILTER PRESS DEWATERING BUILDING - DEMOLITION PLAN MECHANICAL PROCESS
D-640-301 BELT FILTER PRESS DEWATERING BUILDING - DEMOLITION SECTIONS MECHANICAL PROCESS

Table with columns: NO., BY, CK, DATE, REVISIONS AND RECORD OF ISSUE, XREF: BDRDR, XREF: G-01.dwg, XREF: 6/26/2015 10:02:03 AM, XREF: 6/26/2015 10:02:03 AM, XREF: 6/26/2015 10:02:03 AM, XREF: 6/26/2015 10:02:03 AM

BLACK & VEATCH Building a world of difference. Black & Veatch Corporation 201 South Orange Avenue, Suite 500 Orlando, Florida 32801 Certificate No. 8132

ORANGE COUNTY UTILITIES SOUTH WATER RECLAMATION FACILITY PHASE V IMPROVEMENTS GENERAL DRAWING LIST

DESIGNED: NEQ
DETAILED: AJM
CHECKED: FCG
APPROVED: KMB
DATE: JANUARY 2015
ENGINEER OF RECORD: BRAD W VANLANDINGHAM
FLORIDA LICENSE NO.: 44795
PROJECT NO. 180761
G-1 SHEET 2 OF 364



IF THIS BAR DOES NOT MEASURE 1" THEN DRAWING IS NOT TO FULL SCALE

FD 180761 0180761

GENERAL LEGEND

	SURFACED STREET, ROAD OR DRIVE
	SURFACED STREET, ROAD OR DRIVE WITH CURBS
	NON-SURFACED STREET, ROAD OR DRIVE
	CONCRETE WALK
	CATCH BASIN
	MANHOLE
	DRAINAGE COURSE OR FLOW LINE
	EXISTING GROUND CONTOUR
	FINISH GRADE CONTOUR
	BANK OR SLOPE LINES
	TEST HOLE AND NUMBER
	SURVEY LINE WITH PI, PT, OR POT
	CONCRETE ENCASEMENT-PLAN
	CONCRETE REACTION BLOCKING AT BEND, PLUG OR TEE
	DRAINS OR CULVERTS
	TUNNEL CASING - PLAN
	EXISTING GENERAL LAYOUT YARD PIPING
	NEW GENERAL LAYOUT YARD PIPING
	NEW WATER LINE OR SEWER IN PROFILE
	NON-CONNECTING PIPING
	CONSTRUCTION EASEMENT LINE
	EASEMENT LINE
	RIGHT-OF-WAY LINE
	PROPERTY LINE
	PERMANENT EASEMENT LINE
	TEMPORARY EASEMENT LINE
	UTILITY EASEMENT LINE
	SURVEY LINE SECTION LINE
	WATER LINE
	GAS LINE
	TELEPHONE (UNDERGROUND)
	ELECTRICAL (UNDERGROUND)
	POWER OR TELEPHONE LINES (OVERHEAD)
	WATER OR GAS VALVE
	WATER OR GAS METER
	TELEPHONE OR POWER POLE WITH GUY ANCHOR
	FIRE HYDRANT
	YARD HYDRANT
	STREET LIGHT POLE
	TRAFFIC SIGNAL
	TRAFFIC SIGN
	STOPSIGN
	HEDGE, BRUSH, SHRUBS, WOODS
	DECIDUOUS TREE AND TRUNK DIAMETER
	CONIFEROUS TREE AND TRUNK DIAMETER
	SWAMP

	BUILDINGS, STRUCTURES
	STRUCTURES UNDERGROUND
	FUTURE BUILDINGS, STRUCTURES
	CLOTHES LINE
	SWING SET
	FENCE
	FENCE, WOOD
	RAILROAD, EACH TRACK
	CENTERLINE

	SECTION NUMBER OR DETAIL LETTER
	DRAWING NUMBER ON WHICH SECTION OR DETAIL APPEARS; OR WHERE SECTION IS CUT OR DETAIL IS NOTED
	DOOR, WINDOW AND LOUVER SCHEDULE REFERENCE
	WALL ELEVATION
	ABBREVIATION
	SCHEDULE NUMBER
	ROOM NUMBER
	AREA DESIGNATION
	EQUIPMENT OR VALVE IDENTIFICATION CODE
	EQUIPMENT NUMBER
	EQUIPMENT OR VALVE IDENTIFICATION CODE
	EQUIPMENT NUMBER
	EQUIPMENT REPRESENTATION WITH CALLOUT

DEMOLITION LEGEND

	EXISTING STRUCTURES, PIPING, CONDUIT ETC... TO BE REMOVED OR DEMOLISHED
	EXISTING ABANDONED PIPE
	EXISTING PIPE TO BE ABANDONED
	EXISTING PIPE TO BE DEMOLISHED

MATERIALS LEGEND

	ASPHALT PAVEMENT
	EARTH OR GRADE
	GRANULAR FILL (CRUSHED ROCK OR GRAVEL)
	ROCK
	NEW CONCRETE
	EXISTING CONCRETE, PRECAST OR PRESTRESSED CONCRETE
	BRICK, FACE
	BRICK, COMMON
	CONCRETE MASONRY UNITS (CMU)
	CUT STONE OR SAND FILL, GROUT, MORTAR, AND PLASTER
	WOOD, SHEATHING, PANELING, DECKING, ETC.
	WOOD, STUDS, BEAMS, JOISTS, ETC.
	RIPRAP
	CHECKERED PLATE
	STEEL (FOR 1" SCALE & LARGER)
	STEEL OR ALUMINUM (FOR 3/4" SCALE & SMALLER)
	BAR GRATING (LINES IN DIRECTION OF SPAN)
	ALUMINUM
	INSULATION (BATT)
	INSULATION (RIGID)

	NEW PIPING
	UNDERGROUND PIPING
	EXISTING PIPING
	FUTURE PIPING
	AIR (COMPRESSED)
	ALUM - ALUMINUM SULFATE - (ALUM)
	CRW - CHEMICAL RESISTANT ACID WASTE
	CRV - CHEMICAL RESISTANT ACID WASTE VENT
	CW - COLD WATER (POTABLE)
	CWR - CHILLED WATER RETURN
	CWS - CHILLED WATER SUPPLY
	CDWR - CONDENSER WATER RETURN
	CDWS - CONDENSER WATER SUPPLY
	CW - WATER, COLD

PIPING SYSTEMS

	DW - DISTILLED WATER		PRW - PLANT REUSE WATER
	EXISTING ABANDONED PIPE		PG - LP GAS (PROPANE)
	F - FIRE PROTECTION WATER SYSTEM		PIPE TO BE ABANDONED
	FOR - FUEL OIL RETURN		POLY - POLYMER SOLUTION
	FOS - FUEL OIL SUPPLY		RF - REFRIGERANT
	FOV - FUEL OIL VENT		ST - STORM DRAIN
	G - GAS, NATURAL		TW - TEMPERED WATER
	NaOCl - SODIUM HYPOCHLORITE		PD - SUMP PUMP DISCHARGE
	HWR - HEATING SYSTEM WATER RETURN		SAN - SANITARY SEWER
	HWS - HEATING SYSTEM WATER SUPPLY		V - VENT
	HW - WATER, POTABLE HOT		PD - SUMP PUMP DISCHARGE
	HWC - HOT WATER CIRCULATING		SAN - SANITARY SEWER
	NPW - WATER, NON-POTABLE		V - VENT
	NPHW - WATER, NON-POTABLE HOT		VAC - VACUUM
	OF - OVERFLOW		W - WATER

EXISTING PIPING SYSTEMS

	W/I SLUDGE BASINS		RD - ROOF DRAIN
	TO SLUDGE BASINS		REJ - FILTER REJECT
	AHP - AIR HIGH PRESSURE		RS - RAW SEWAGE
	CLS - CHLORINE SOLUTION		SA-1 - SAMPLE
	CLGV - CHLORINE GAS (VACUUM)		SA-2 - SAMPLE
	DR-1 DRAIN		SC - SCUM
	DR-2 DRAIN		SE - SECONDARY EFFLUENT
	DR-3 DRAIN		SL - SLUDGE
	FE - FILTER EFFLUENT		SS - SANITARY SEWER
	GR - GRIT SLURRY		STS - STORM SEWER
	ML - MIXED LIQUOR		WAS - WASTE ACTIVATED SLUDGE
	OA - ODOROUS AIR		W2-1 - PLANT REUSE
	PS - POLYMER SOLUTION		W2-2 - PLANT REUSE
	W1-2 POTABLE WATER		W2-3 - PLANT REUSE
	RAS - RETURN ACTIVATED SLUDGE		FM - FORCE MAIN

PIPING ACCESSORIES LEGEND

	BLIND FLANGE
	CAP OR PLUG
	CLEANOUT
	CROSS
	DIAPHRAGM SEAL
	ELBOW
	ELBOW DOWN
	ELBOW TURNING UP
	HOSE CONNECTION
	QUICK COUPLING
	REDUCER
	RUPTURE DISK
	TEE
	TEE LINE DOWN
	TEE LINE UP
	WYE
	WYE STRAINER
	WYE STRAINER WITH BLOWOFF
	DRAIN OR BELL-UP

	CALIBRATING COLUMN
	TRAP
	UNION
	WALL SLEEVE
	AUTOMATIC DRAIN TRAP
	DRIP TRAP
	DUPLEX STRAINER
	EXPANSION COMPENSATOR
	INLINE FILTER
	FLEXIBLE HOSE OR TUBING
	FLEXIBLE CONNECTOR
	HOSE REEL
	INJECTOR, EDUCTOR, BLENDER
	ORIFICE PLATE
	PIPE GUIDE
	SEDIMENT TRAP
	STRAINER
	SUCTION DIFFUSER
	PIPE DIFFUSER

	SURGE CHAMBER
	VENT - SCREENED
	VENT
	PRESSURE GAUGE W/SNUBBER
	SIGHT FLOW INDICATOR
	TEMPERATURE INDICATOR
	THERMOMETER
	ELECTROMAGNETIC/ULTRASONIC FLOWMETER
	PITOT TUBE
	ROTAMETER
	TURBINE OR PROPELLOR FLOWMETER
	SET STOP METER
	VENTURI
	FLOW METER

MISCELLANEOUS EQUIPMENT

	STATIC MIXER
	VERTICAL MIXER
	SIGHT GLASS
	CHANNEL DIFFUSER
	COMPRESSOR OR BLOWER
	GRIT CLASSIFIER
	PIPE ANCHOR
	PUMP
	SCREENINGS COMPACTOR
	SLUICE GATE
	SLIDE GATE
	STOP PLATE
	BAR SCREEN
	EXPANSION TANK
	FLUME
	WEIR

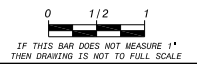
ACTUATOR LEGEND

	ELECTRIC
	FLOAT
	DIAPHRAGM
	AIR/OIL TANDEM
	SOLENOID
	AIR

VALVE LEGEND

	PINCH VALVE		ANGLE VALVE		THERMAL SHUTOFF VALVE
	PLUG VALVE, ECCENTRIC		CHLORINE INSTITUTE VALVE		EXPLOSION RELIEF VALVE
	PLUG VALVE, NON-ECCENTRIC		DIAPHRAGM VALVE		HOSE FAUCET
	BUTTERFLY VALVE		THROTTLING VALVE		HOSE FAUCET W/VACUUM BREAKER
	GATE VALVE		FLAME ARRESTER OR CHECK		HOSE VALVE W/HOSE NIPPLE
	BALL VALVE		BACKWATER VALVE		BACKFLOW PREVENTER
	GLOBE VALVE		INLINE PRESSURE RELIEF VALVE		SAFETY RELIEF VALVE
	CHECK VALVE		PRESSURE REGULATING VALVE		VACUUM RELIEF CHECK VALVE
	CHECK VALVE		PRESSURE SUSTAINING OR MAINTAINING VALVE		PRESSURE VACUUM RELIEF VALVE
	3 WAY VALVE		VACUUM BREAKER		
	4 WAY VALVE				

NOTE : SYMBOLS ON THIS SHEET WHICH ARE TO BE SHOWN AS EXISTING SHALL BE DELINEATED AS SCREENED THOSE SYMBOLS WHICH ARE TO BE SHOWN AS NEW SHALL BE DELINEATED AS SOLID (HEAVY)



DATE	7/2015	BID ISSUE	
REVISED AND RECORD OF ISSUE		NO. BY CK	
GENERAL DRAWINGS		REVISED AND RECORD OF ISSUE	
XREF1: BORDER.dwg		XREF2:	
XREF3:		XREF4:	
XREF5:		XREF6:	
USER: VAN16643		DWG. VER: 1001	

BLACK & VEATCH
Building a world of difference:
Black & Veatch Corporation
201 South Orange Avenue, Suite 500
Orlando, Florida 32801
Certificate No. 8132

**ORANGE COUNTY UTILITIES
SOUTH WATER RECLAMATION FACILITY
PHASE V IMPROVEMENTS**

GENERAL
SYMBOLS AND DESIGNATION LEGENDS

DESIGNED: NEQ
DETAILED: AJM
CHECKED: FCG
APPROVED: KMB
DATE: JANUARY 2015
ENGINEER OF RECORD: BRAD W VANLANDINGHAM FLORIDA LICENSE NO.: 44795
PROJECT NO. 180761
G-2 SHEET 3 OF 364

GENERAL NOTES FOR DRAWINGS

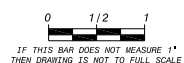
- HORIZONTAL CONTROL: COORDINATES ARE BASED ON THE FLORIDA STATE PLANE COORDINATE SYSTEM, EAST ZONE NAD83(90) AND TIED INTO THE ORANGE COUNTY HORIZONTAL CONTROL NETWORK. REFERENCE MONUMENTS; NW CORNER OF SECTION 32, TOWNSHIP 23S, RANGE 29 EAST. (CCR #072486), N 1/4 CORNER OF SECTION 31, TOWNSHIP 23S, RANGE 29 EAST. (CCR #072484), W 1/4 CORNER OF SECTION 32, TOWNSHIP 23 SOUTH, RANGE 29 EAST. (CCR #072489).
- VERTICAL CONTROL: ELEVATIONS ARE BASED ON THE ORANGE COUNTY BENCH MARK #1019020, ELEVATION = 90.41 (NAVD88), BEING A BRASS DISK IN CURB ON THE SOUTH SIDE OF SAND LAKE ROAD AT THE WEST ENTRANCE TO ORANGE COUNTY'S SOUTH WATER RECLAMATION FACILITY, AND ORANGE COUNTY BENCH MARK #1019015, ELEVATION = 96.65 (NAVD88), BEING A SQUARE CUT ON THE EAST SIDE OF CONCRETE STRUCTURE FOR AN AIR RELEASE VALVE 1,110' SOUTH OF SAND LAKE ROAD.
- THE PROJECTED 100 YEAR FLOOD ELEVATION IS 87.6, NAVD88.
- EXISTING UTILITIES AND STRUCTURES (UNDERGROUND, SURFACE, OR OVERHEAD) ARE INDICATED ONLY TO THE EXTENT THAT SUCH INFORMATION WAS KNOWN, OR MADE AVAILABLE TO, OR DISCOVERED BY THE ENGINEER IN PREPARING THE DRAWINGS. THE LOCATIONS, CONFIGURATIONS, AND ELEVATIONS OF SUBSURFACE FACILITIES AND UTILITIES ARE APPROXIMATE, AND NOT ALL UTILITIES AND FACILITIES MAY BE INDICATED. OVERHEAD UTILITIES ARE NOT INDICATED IN ARCHITECTURAL ELEVATIONS, PROFILE OR SECTION DRAWINGS. THE ENGINEERING INVESTIGATIONS, LOCATION, AND DESIGNATION OF SUBSURFACE UTILITIES INDICATED IN THESE CONTRACT DOCUMENTS HAS BEEN PERFORMED TO QUALITY LEVEL C IN ACCORDANCE WITH GENERALLY ACCEPTED ENGINEERING PRINCIPLES AND PRACTICES AS OUTLINED IN ASCE STANDARD AND GUIDELINE BULLETIN C/ASCE 38-02 UNLESS OTHERWISE DESIGNATED. WHERE SUCH ACTIVITIES HAVE BEEN TO A HIGHER LEVEL OF QUALITY, THE HIGHER QUALITY LEVEL FOR THE AFFECTED AREAS IS INDICATED IN THE CONTRACT DOCUMENTS.
- "SCREENED" (LIGHT) DELINEATION INDICATED ON THE DRAWINGS DENOTES EXISTING FACILITIES. "SCREENED" INFORMATION WAS TAKEN FROM EXISTING CONSTRUCTION DRAWINGS AND DATA, IS FOR REFERENCE ONLY, AND SHALL BE FIELD VERIFIED BY THE CONTRACTOR PRIOR TO THE ORDERING OF MATERIALS AND BEGINNING OF CONSTRUCTION. "BOLD" DELINEATION IS NEW WORK TO BE CONSTRUCTED UNDER THIS CONTRACT.
- CALL BEFORE YOU DIG. CONTRACTOR SHALL VERIFY PRECISE LOCATIONS AND ELEVATIONS OF ALL UTILITIES AND STRUCTURES, WHETHER INDICATED ON THE DRAWINGS OR NOT, IN THE FIELD IN ADVANCE OF EXCAVATING, BY CONTACTING ALL UTILITIES AND OTHER AGENCIES, AND BY PROSPECTING. CONTRACTOR SHALL BE RESPONSIBLE FOR REMOVAL, DEMOLITION, RECONSTRUCTION, AND RECONNECTION OF EXISTING FACILITIES AS REQUIRED TO COMPLETE THE WORK. IF REQUIRED AFTER FIELD VERIFICATION, CONTRACTOR SHALL COORDINATE WITH THE ENGINEER TO DETERMINE ANY NECESSARY MODIFICATIONS TO PROPOSED NEW WORK.
- BEFORE CONSTRUCTION IS STARTED, CONTRACTOR SHALL COORDINATE WITH THE OWNER OF EACH UTILITY AND DEFINE THE REQUIREMENTS AND METHODS TO ACCOMMODATE THE PROTECTION, TEMPORARY SUPPORT, ADJUSTMENT, OR RELOCATION OF ANY UTILITIES AFFECTED BY THE PROPOSED NEW WORK.
- CONTRACTOR SHALL COMPLY WITH THE GOVERNING AGENCY NPDES CONSTRUCTION REQUIREMENTS, AND SHALL PROVIDE APPROPRIATE MITIGATION MEASURES OR PROTECTION AND RESTORATION AT ALL LOCATIONS AS REQUIRED BY THEIR OPERATIONS, AND AS DIRECTED BY ENGINEER. SPECIAL CONSTRUCTION REQUIREMENTS, TEMPORARY PROTECTIVE FENCING OR BARRICADES, SHEETING, SHORING, EROSION PROTECTION, AND SURFACE RESTORATION AT CERTAIN LOCATIONS ARE INDICATED ON THE DRAWINGS TO BRING CONTRACTOR'S ATTENTION TO SENSITIVE AREAS.
- THE CONTRACTOR SHALL BE RESPONSIBLE FOR THE PROTECTION OF ALL PROPERTY CORNER MARKERS. PROPERTY CORNER MARKERS DAMAGED BY CONSTRUCTION ACTIVITIES SHALL BE REESTABLISHED BY A PROFESSIONAL SURVEYOR LICENSED IN THE STATE OF FLORIDA.
- THE EXISTING TOPOGRAPHICAL FEATURES SHOWN ON THE DRAWINGS WERE OBTAINED FROM GROUND SURVEY AND REPRESENT CONDITIONS AS THEY EXIST AS OF OCTOBER 2013. AS PART OF THE BID PROCESS, AND PRIOR TO CONSTRUCTION, THE CONTRACTOR SHALL EXAMINE THE SITE OF THE PROPOSED WORK AND MAKE ALL NECESSARY INVESTIGATIONS TO THOROUGHLY DEFINE ALL DIFFICULTIES INVOLVED IN THE COMPLETION OF ALL WORK REQUIRED PURSUANT TO THE REQUIREMENTS OF THE CONTRACT DOCUMENTS.
- THE LOCATION OF TEST HOLES INDICATED ON THE DRAWINGS IS APPROXIMATE. CONTRACTOR SHALL REFER TO THE GEOTECHNICAL REPORT FOR ACTUAL TEST HOLE LOCATIONS AND THE FINDINGS OF THE GEOTECHNICAL INVESTIGATIONS.
- CONTRACTOR SHALL PROTECT AND MAINTAIN ALL EXISTING TREES, SHRUBS, AND PLANTS UNLESS OTHERWISE NOTED.
- CONTRACTOR SHALL INSTALL ALL PIPELINES, PAVING, WALKWAYS, AND CURB AND GUTTER AT A UNIFORM GRADE BETWEEN ELEVATIONS DEPICTED ON THE DRAWINGS.
- FOR ALL SITE GRADING, SMOOTH PARABOLIC TRANSITIONS SHALL BE MADE BETWEEN CHANGES IN SLOPE. PARABOLIC ROUNDING SHALL APPLY TO ALL CUT AND FILL SECTIONS.
- FINISHED GRADE ELEVATION AT THE BUILDING FACE, WHERE NOT ADJACENT TO PAVEMENT, SHALL BE APPROXIMATELY 6 INCHES BELOW FINISHED FLOOR ELEVATION UNLESS OTHERWISE NOTED. FINISHED GRADE ELEVATION ADJACENT TO BASINS SHALL BE APPROXIMATE AS INDICATED BY CONTOURS, OR AS REQUIRED TO MEET STAIR LANDINGS. CONTRACTOR SHALL TAKE CARE TO PROVIDE PROPER GRADE, ELEVATIONS AND ALIGNMENT TO PROVIDE FOR FUTURE CONNECTIONS.
- THE CONTRACTOR'S OPERATIONS SHALL CONFORM TO THE RULES AND REGULATIONS OF THE STATE CONSTRUCTION SAFETY ORDERS PERTAINING TO EXCAVATION AND TRENCHING. WHEN TRENCH EXCAVATION EXCEEDS FIVE (5) FEET IN DEPTH, PERFORM THE FOLLOWING:
 - CONTRACTOR SHALL CONFORM TO OSHA STANDARD 29CFR SECTION 1926.650 WHICH IS INCORPORATED IN FLORIDA STATE 90-96.
 - CONTRACTOR SHALL PROVIDE WRITTEN ASSURANCE OF COMPLIANCE WITH THIS LAW.
 - THE TRENCH SAFETY SYSTEM IS TO BE SUBMITTED BY THE CONTRACTOR.
- RESTRAINED JOINTS SHALL BE PROVIDED FOR ALL PIPING JOINTS.
- THE DRAWINGS INDICATE TYPES OF PIPE SUPPORT SYSTEMS AT VARIOUS LOCATIONS. HOWEVER, ALL PIPE SUPPORTS, HANGERS, BRACKETS, INSERTS OR BRACES ARE NOT SHOWN. CONTRACTOR SHALL REFER TO THE SPECIFICATIONS AND PROVIDE A COMPLETE SUPPORT SYSTEM AS REQUIRED.
- THE TERM "PROPOSED" AS INDICATED ON THE DRAWINGS MEANS THE ITEM IS DESIGNED OR PLANNED TO BE PROVIDED BY OWNER OR OTHERS SEPARATE FROM THIS CONTRACT. THE TERM "FUTURE" AS INDICATED ON THE DRAWINGS REFERS TO THE ENGINEER'S INTERPRETATION OF THE ITEM FOR THE FUTURE, BASED ON AVAILABLE INFORMATION.
- MAINTAIN ACCESS AND OPERATION OF EXISTING PROCESS FACILITIES CONTINUOUSLY THROUGHOUT THE CONSTRUCTION ACTIVITIES OR UNTIL NEW FACILITIES HAVE BEEN ACCEPTED. INDIVIDUAL PROCESS FACILITIES CAN BE TAKEN OUT OF SERVICE FOR LIMITED PERIODS OF TIME TO FACILITATE CONSTRUCTION AS SPECIFIED IN THE CONTRACT DOCUMENTS.
- THE DRAWINGS DEPICT THE APPROXIMATE LOCATIONS, ELEVATIONS AND DIMENSIONS AS SHOWN ON THE PLANS OF EXISTING UTILITIES AND STRUCTURES. IT IS THE RESPONSIBILITY OF THE CONTRACTOR TO INCLUDE IN THE BID TO VERIFY ALL UTILITY LOCATIONS, ELEVATIONS AND DIMENSIONS BY UTILIZING EXPLORATORY INVESTIGATION AND EXCAVATIONS. VERIFICATION OF EXISTING UTILITY LOCATION SHALL BE CONDUCTED SUFFICIENTLY IN ADVANCE OF CONSTRUCTION TO ALLOW RESOLUTION OF CONFLICTS IN A TIMELY MANNER. IF A POTENTIAL CONFLICT IS LOCATED, OR AN EXISTING UTILITY OR STRUCTURE LOCATED IN A DIFFERENT LOCATION THAN IS ILLUSTRATED HEREIN, THE CONTRACTOR IS TO NOTIFY THE RESIDENT PROJECT REPRESENTATIVE IMMEDIATELY. AT A MINIMUM, THE FOLLOWING INFORMATION SHALL BE PROVIDED BY THE CONTRACTOR TO THE RESIDENT PROJECT REPRESENTATIVE; A DIMENSIONED ILLUSTRATION NOTING LOCATION, ELEVATION, UTILITY TYPE, MATERIAL AND SIZE. CONTRACTOR SHALL PROVIDE FITTINGS, ADAPTERS, SOLID SLEEVE CLOSURES, AND HARNESS MECHANICAL COUPLING; ROTATE FITTINGS; DEFLECT JOINTS; AND MODIFY EXISTING PIPING AS APPLICABLE AND AS REQUIRED TO MAKE CONNECTIONS, INCLUDING ADJUSTMENTS FOR ANY OFFSETS IN CENTERLINE ELEVATIONS BETWEEN PIPELINES. CONTRACTOR SHALL PROVIDE TEMPORARY PLUG WITH FACTORY OUTLET SIZED AS REQUIRED FOR CONTRACTOR'S TESTING AND DISINFECTION WORK BEFORE MAKING CONNECTION, WHEN APPLICABLE. CONTRACTOR SHALL COORDINATE MAKING EACH CONNECTION WITH THE OWNER.
- RESTORE ALL PROPERTY AND INFRASTRUCTURE, INCLUDING UTILITIES DISTURBED BY CONSTRUCTION OPERATIONS TO THE CONDITIONS WHICH EXISTED PRIOR TO CONSTRUCTION OR BETTER. THE COST OF SUCH RESTORATION SHALL BE INCLUDED IN THE BID. ANY DAMAGE TO EXISTING PROPERTY, UTILITIES, STRUCTURES AND/OR SERVICES SHALL BE REPAIRED AT THE CONTRACTOR'S EXPENSE IN A MANNER AS DIRECTED BY THE ENGINEER AND OWNER. REMOVE AND REPLACE ALL PIPE, CONDUIT AND CULVERTS DAMAGED DURING CONSTRUCTION, AT NO EXPENSE TO THE OWNER. CONTRACTOR SHALL REMOVE AND REPLACE, OR TEMPORARILY RELOCATE, STORM SEWERS, CULVERTS AND OTHER UTILITIES AS REQUIRED DURING THE INSTALLATION OF PIPE. CONTRACTOR SHALL PROVIDE A TEMPORARY MEANS OF CONVEYING STORMWATER. WHERE TEMPORARY SUPPORT OF UTILITIES IS REQUIRED, THE CONTRACTOR SHALL PAY ALL ASSOCIATED COSTS AND COORDINATE WITH THE OWNER AND ENGINEER.
- FILTER FABRIC ENCAPSULATION IS REQUIRED IF GRADED GRAVEL OR CRUSHED ROCK IS USED AS FILL OR EMBEDMENT MATERIAL.
- ALL BURIED PIPING SHALL BE CONSTRUCTED AS SHOWN ON THE PLANS. A MINIMUM COVER OF 36 INCHES SHALL BE MAINTAINED ON ALL BURIED PIPING, WHERE IT IS NOT OTHERWISE SPECIFIED ON PLANS OR INDICATED BY THE ENGINEER. ALL DIRECTION CHANGES IN THE PIPE BOTH HORIZONTAL AND VERTICAL SHALL BE BY JOINT DEFLECTION UNLESS OTHERWISE NOTED OR INDICATED BY THE ENGINEER. JOINT DEFLECTION SHALL NOT EXCEED 50% OF MANUFACTURER'S RECOMMENDED DEFLECTION FOR DUCTILE IRON AND STEEL PIPE. NO DEFLECTION SHALL BE ALLOWED FOR PVC PIPE.
- CONSTRUCTION AREA WILL BE CLEANED UP DAILY. ALL EXCAVATIONS WILL BE BACKFILLED BY END OF DAY, OR WITH PERMISSION FROM THE RESIDENT PROJECT REPRESENTATIVE, MAY LEFT OPEN WITH PROPER SAFETY PRECAUTIONS. CONTRACTOR SHALL HANDLE ALL SPILLS, DRAINING PIPES OR TIE-IN CONNECTIONS. CONTRACTOR WILL HAVE TANKER TRUCKS AND LINE EXCAVATIONS WITH POLY LINER IN ORDER TO HANDLE SPILLS AND TO CAPTURE AND DISPOSE OF FLUIDS ENCOUNTERED.
- AREAS OF CONGESTION MAY REQUIRE HAND EXCAVATION.
- CONTRACTOR IS SOLELY RESPONSIBLE TO LOCATE ALL UNDERGROUND UTILITIES WITH GROUND PENETRATING RADAR, AND SHALL NOT RELY ON COUNTY AND/OR SUNSHINE STATE ONE CALL OF FLORIDA.
- SOD ALL DISTURBED AREAS, NO SEEDING ALLOWED.

FLOW STREAM IDENTIFICATION

ABBREVIATIONS	DESCRIPTION	MATERIAL	PIPE SIZE (INCHES)	SPEC SECTION	INTERIOR LINING	WORKING PRESSURE (PSIG)	TEST PRESSURE (PSIG) (1)	TEST FLUID	BURIED COATING SYSTEM
AIR	AIR LINE PIPING	SST	1" AND UP	15064	N/A		SECT 15020	SECT 15020	N/A
CAKE	CAKE	STEEL	8"	15065	N/A		450	NPW	N/A
CE	CLARIFIED EFFLUENT	DIP	4" AND UP	15240	CEMENT MORTAR LINED	75	100	NPW	SECT 15240
DIG	DIGESTED SLUDGE	DIP	4" AND UP	15240	CERAMIC EPOXY LINED		100	NPW	N/A
DRN	DRAINAGE	DIP	4" AND UP	15240	CERAMIC EPOXY LINED	G	SECT 02530	NPW	SECT 15240
		PVC	3" AND LESS	15290	N/A	G	SECT 02530	NPW	N/A
		SST	1" AND UP	15064	N/A	G	SECT 02530	NPW	N/A
EQ	EQUALIZATION	DIP	4" AND UP	15240	CEMENT MORTAR LINED	75	100	NPW	SECT 15240
FE	FILTER EFFLUENT	DIP	4" AND UP	15240	CEMENT MORTAR LINED	10	100	NPW	SECT 15240
FO	FUEL OIL PIPING	CS	1" AND UP	15065	N/A		SECT 15020	SECT 15020	N/A
GRT	GRIT	DIGL	4" AND UP	15242	GLASS LINED	35	100	NPW	N/A
IR	INTERNAL RECYCLE	DIP	4" AND UP	15240	CERAMIC EPOXY LINED		100	NPW	SECT 15240
ML/MXL	MIXED LIQUOR	DIP	4" AND UP	15240	CERAMIC EPOXY LINED	15	100	NPW	SECT 15240
POL	POLYMER	PVC	1.5"	15064	N/A		100	NPW	N/A
PW	POTABLE WATER	DIP	4" AND UP	15240	CEMENT MORTAR LINED	90	100	PW	SECT 15240
		PVC	3" AND LESS	15290	N/A	90	100	PW	N/A
RAS	RETURN ACTIVATED SLUDGE	DIP	4" AND UP	15240	CERAMIC EPOXY LINED	25	100	NPW	SECT 15240
REJ	FILTER REJECT	DIP	4" AND UP	15240	CEMENT MORTAR LINED		100	NPW	SECT 15240
RW	RECLAIMED WATER SYSTEM	DIP	4" AND UP	15240	CEMENT MORTAR LINED		100	NPW	SECT 15240
		PVC	3" AND LESS	15290	N/A		100	NPW	N/A
		SST	3" AND LESS	15064	N/A		100	NPW	N/A
SI	SECONDARY INFLUENT	DIP	4" AND UP	15240	CERAMIC EPOXY LINED		100	NPW	SECT 15240
SEW	SEWAGE	DIP	4" AND UP	15240	CERAMIC EPOXY LINED		100	NPW	SECT 15240
SC	SCUM	DIP	4" AND UP	15240	CERAMIC EPOXY LINED		100	NPW	SECT 15240
STS	STORM SEWER	RCP/ERCP	4" AND UP	02615	N/A	G	SECT 02530	NPW	N/A
TW	TREATED WATER	DIP	4" AND UP	15240	CEMENT MORTAR LINED		100	NPW	SECT 15240
TWAS	THICKENED WASTE ACTIVATED SLUDGE	DIP	4" AND UP	15240	CERAMIC EPOXY LINED		100	NPW	SECT 15240
WAS	WASTE ACTIVATED SLUDGE	DIP	4" AND UP	15240	CERAMIC EPOXY LINED		100	NPW	SECT 15240

FLOW STREAM IDENTIFICATION NOTES

- TEST PIPING IN ACCORDANCE WITH SPECIFICATION SECTION 15144 UNLESS OTHERWISE NOTED.
- LABEL PIPING IN ACCORDANCE WITH SPECIFICATION SECTION 09940.
- DISINFECT PIPING IN ACCORDANCE WITH SPECIFICATION SECTION 15141.
- WHEN CONNECTING FLANGES OR THREADS OF DISSIMILAR METALS, USE FLANGE OR UNION INSULATION KITS AS SPECIFIED IN SECTION 15122 AND DETAIL B1MD-3.
- MINIMUM COVER FOR PIPING SHALL BE 3 FEET, UNLESS NOTED OTHERWISE.
- ALL PIPING IS TO HAVE A CONSTANT SLOPE BETWEEN THE INVERT OR CENTERLINE POINT SHOWN ON THE DRAWINGS.
- ALL PIPING JOINTS ARE TO BE MECHANICALLY RESTRAINED.
- COORDINATE CONNECTION AND ELEVATIONS AT STRUCTURES WITH PROCESS, MECHANICAL AND PLUMBING DRAWINGS.
- PROVIDE MINIMUM SEPARATION OF PIPING AS IDENTIFIED IN THE GENERAL NOTES.
- DO NOT COAT STAINLESS STEEL PIPE AND FITTINGS.
- COLOR OF COATING TO BE IN ACCORDANCE WITH SPECIFICATION SECTION 09940.
- WORKING PRESSURE "G" INDICATES GRAVITY.
- WORKING PRESSURE "A" INDICATES ATMOSPHERIC.
- INTERIOR, EXTERIOR AND SUBMERGED COATING SYSTEMS PER SPECIFICATION SECTION 09940 UNLESS OTHERWISE NOTED.



NO.	BY	CHK	APP
7/2015			
DATE	BID ISSUE	REVIEWS AND RECORD OF ISSUE	XREF1: BORDER.dwg
CYNET, ID: 50-3010	General Drawings		
WF: G-04.dwg			
SAVED: VAN16843_11/5/2014 3:44:55 PM			
XREF2:			
XFLOTTED: VAN16843_6/11/2014 1:16:			
XREF4:			
USER: VAN16843	DWG: VER: 1002		

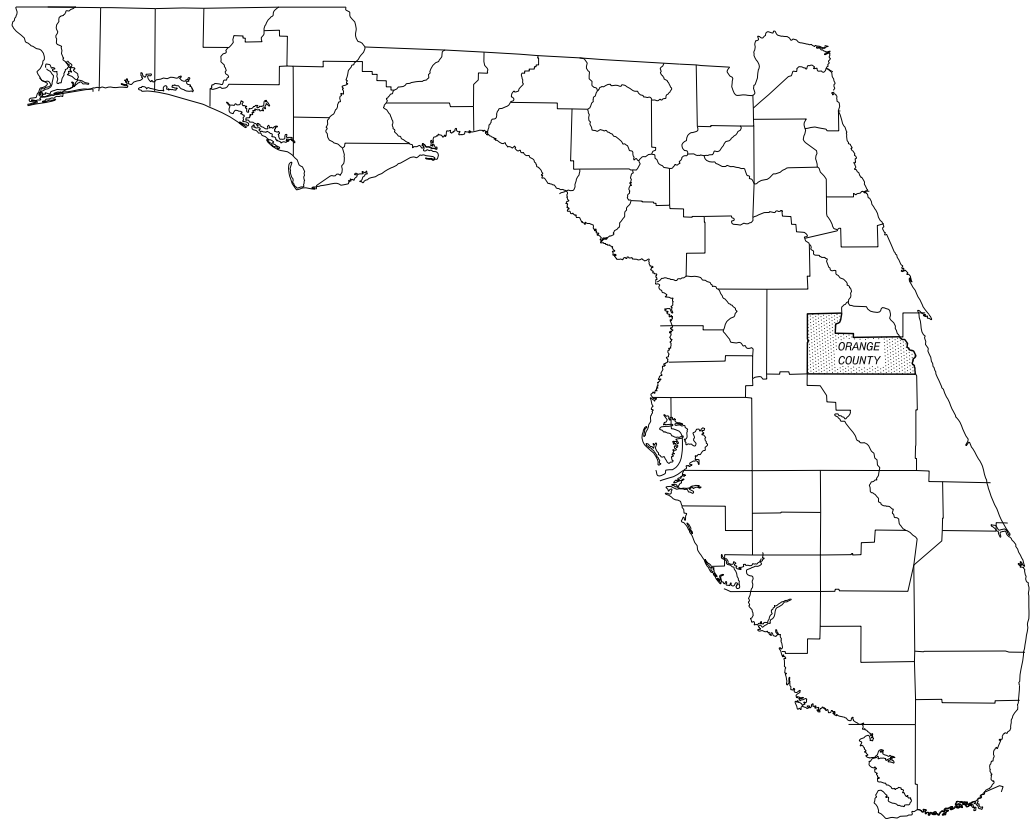
BLACK & VEATCH
Building a world of difference.

Black & Veatch Corporation
201 South Orange Avenue, Suite 500
Orlando, Florida 32801
Certificate No. 8132

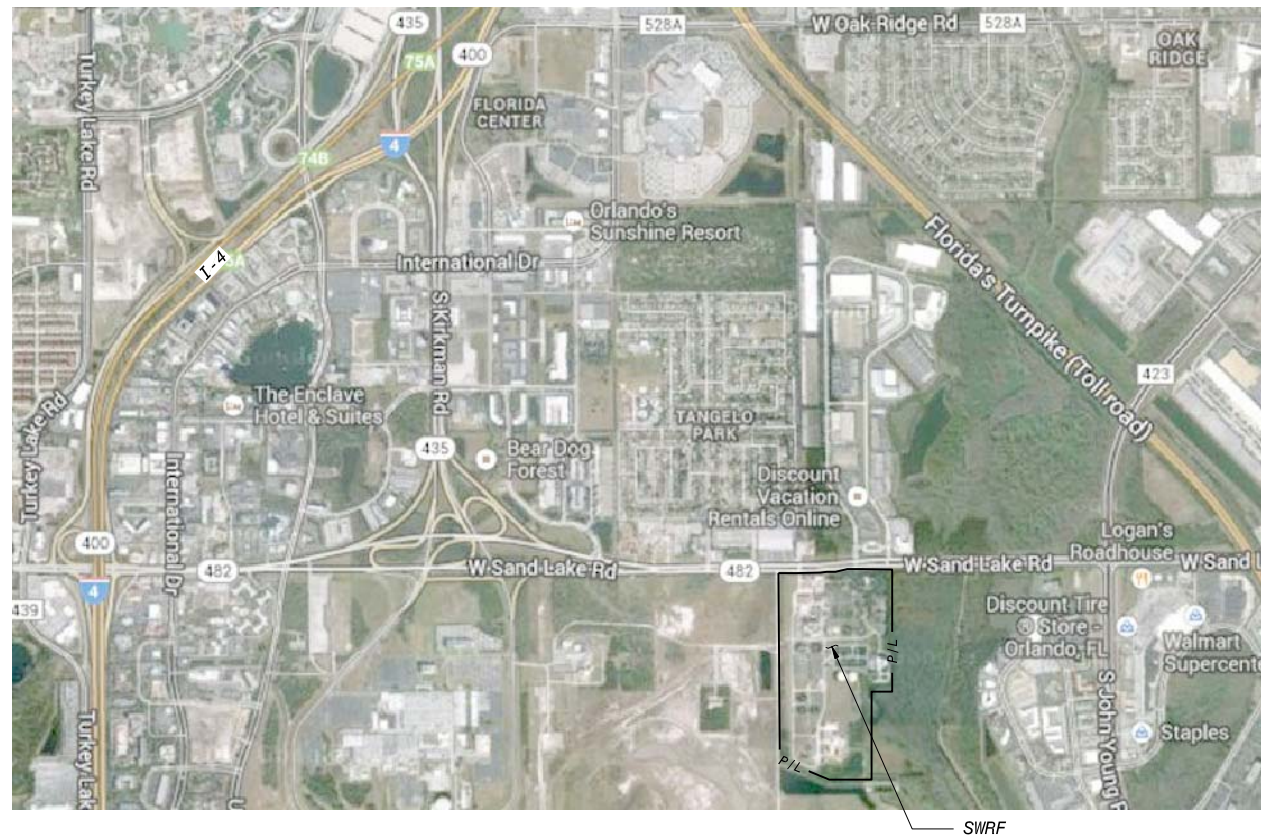
ORANGE COUNTY UTILITIES
SOUTH WATER RECLAMATION FACILITY
PHASE V IMPROVEMENTS

GENERAL
NOTES AND FLOW STREAM IDENTIFICATION

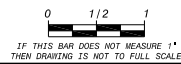
DESIGNED: NEQ
DETAILED: AJM
CHECKED: FCG
APPROVED: KMB
DATE: JANUARY 2015
ENGINEER OF RECORD:
BRAD W VANLANDINGHAM
FLORIDA LICENSE NO.: 44795
PROJECT NO.
180761
G-4
SHEET
5 OF 364



STATE OF FLORIDA
NO SCALE




SOUTH WATER RECLAMATION FACILITY
4760 WEST SAND LAKE ROAD, 32819



DATE	BID ISSUE	REVISIONS AND RECORD OF ISSUE	NO.	BY	CHK	APP
7/2015						

CYGNET ID: 50_3010 - General Drawings
 XREF1: BORDER.dwg
 XREF2: LOCATION map.dwg
 XREF3:
 XREF4:
 XREF5:
 USER: VAN16843
 DWG. VER: 1002

BLACK & VEATCH
 Building a world of difference.

 Black & Veatch Corporation
 201 South Orange Avenue, Suite 500
 Orlando, Florida 32801
 Certificate No. 8132

ORANGE COUNTY UTILITIES
 SOUTH WATER RECLAMATION FACILITY
 PHASE V IMPROVEMENTS
 GENERAL
 SITE LOCATION MAPS

DESIGNED: NEQ
DETAILED: AJM
CHECKED: FCG
APPROVED: KMB
DATE: JANUARY 2015
ENGINEER OF RECORD: BRAD W VANLANDINGHAM FLORIDA LICENSE NO.: 44795
PROJECT NO. 180761
G-5 SHEET 6 OF 364

