

# ABBREVIATIONS

AB	ANCHOR BOLTS	FD	FLOOR DRAIN	PC	PORTLAND CEMENT
AC or A/C	AIR CONDITIONING	FE	FIRE EXTINGUISHER	PL	PLATE
ACOUS	ACOUSTICAL	FH	FULL HEIGHT	PLYWD	PLYWOOD
AD	ACCESS DOOR	FHC	FIRE HOSE CABINET	PR	PAIR
AFF	ABOVE FINISHED FLOOR	FIN	FINISH	PREP	PREPARATION
ALUM	ALUMINUM	FLR	FLOOR	PROJ	PROJECTION
APPR	APPROVED	FO	FINISHED OPENING	QT	QUARRY TILE
		FOC	FACE OF CONCRETE		
BD or BRD	BOARD	FOS	FACE OF STUD		
BLDG	BUILDING	FOUND	FOUNDATION	R	RISER
BLK	BLOCK	FW	FACE OF WALL	RAD	RADIUS
BM	BEAM	FS	FLOOR SINK	RD	ROOF DRAIN
BOB	BOTTOM OF BEAM	FT	FEET	REF	REFERENCE
BOT	BOTTOM			REFL	REFLECTED
		GA	GAUGE	REIN	REINFORCE
C/C	CENTER TO CENTER	GALV	GALVANIZE	REQ'D	REQUIRED
CEM	CEMENT	GL	GLASS	REV	REVERSE
CER	CERAMIC	GR	GRADE	RM	ROOM
CH	CEILING HEIGHT	GYP BD	GYPSPUM BOARD	RO	ROUGH OPENING
CJ	CONTROL JOINT	GWB			
CLG or CEIL	CEILING			SCWD	SOLID CORE WOOD DOOR
CLO	CLOSET	HDWD	HARDWOOD	SECT	SECTION
CLR	CLEAR	HM	HOLLOW METAL	SHT	SHEET
CMU	CONCRETE MASONRY UNIT	HORIZ	HORIZONTAL	SIM	SIMILAR
COL	COLUMN			SIMUL	SIMULATED
COMP	COMPOSITION	ID	INSIDE DIAMETER	SQ	SQUARE
CONC	CONCRETE	INSUL	INSULATION	SS	STAINLESS STEEL
CONN	CONNECTION	INT	INTERIOR	STD	STANDARD
CONT	CONTINUOUS			STL	STEEL
CORR	CORRIDOR	JAN	JANITOR	STRUCT	STRUCTURAL
CSK	COUNTERSINK	LAV	LAVATORY	SUSP	SUSPENDED
		LEV	LEVEL	SYM	SYMMETRICAL
DBL	DOUBLE	LTG	LIGHTING		
DF	DRINKING FOUNTAIN	LT WT	LIGHT WEIGHT	T	TREAD
DIA	DIAMETER			TB	TACKBOARD
DIAG	DIAGONAL			T&G	TONGUE AND GROOVE
DNM	DOWN	MAINT	MAINTENANCE	TEMP	TEMPERED
DO	DOOR OPENING	MATL	MATERIAL	TEL	TELEPHONE
DR	DOOR	MAX	MAXIMUM	THK	THICK
DS	DOWNSPOUT	MECH	MECHANICAL	TOC	TOP OF CONCRETE / CURB
DTL	DETAIL	MTL	METAL	TOP	TOP OF PARAPET
DWG	DRAWINGS	MEZZ	MEZZANINE	TOS	TOP OF STEEL
		MFR	MANUFACTURER	TOW	TOP OF WALL
EA	EACH	MIN	MINIMUM	TYP	TYPICAL
EJ	EXPANSION JOINT	MISC	MISCELLANEOUS		
ELEC	ELECTRICAL	MO	MASONRY OPENING	UNO	UNLESS NOTED OTHERWISE
ELEV or EL	ELEVATION	MT	METAL THRESHOLD	VERT	VERTICAL
EQ	EQUAL	MULL	MULLION		
EQUIP	EQUIPMENT	N	NEW		
EXIST	EXISTING	NO	NUMBER	WC	WATER CLOSET
EXT	EXTERIOR	NR	NON-RATED	WD	WOOD
EWC	ELEC. WATER COOLER	NTS	NOT TO SCALE	WI	WROUGHT IRON
				WL	WATER LEVEL
		OC	ON CENTER	WP	WATERPROOFING
		OD	OUTSIDE DIAMETER	WP ⊕	WORKING POINT
		OH	OPPOSITE HAND		
		OPNG	OPENING		
		OPP	OPPOSITE		

# SYMBOLS

∠ ANGLE	∅ DIAMETER or ROUND	# NUMBER or POUND	& AND
C CHANNEL	⊕ WORK POINT OR ELEV BENCH MARK	□ SQUARE	⊖ AT
PL PLATE		⊠ SQUARE FEET	△ DELTA
⊕ CENTER LINE			¢ PENNY

**MAIN-TITLE**  
 SCALE: X'-X"

BUILDING SECTION SYMBOL

SECTION SYMBOL

DETAIL BUBBLE

EXTERIOR ELEVATION SYMBOL

FRAME TYPE TAG

ROOM NAME

DOOR NUMBER TAG

WINDOW/STORFRONT TYPE TAG

WALL TYPE TAG

DOOR TYPE TAG

LEVEL HEIGHT

CEILING TAG

FINISH SYMBOL

SPOT ELEVATION

# PROJECT CODE SUMMARY AND INFORMATION

**CODES AND STANDARDS**

A. BUILDING ----- FBC 2010 - BUILDING

B. ACCESSIBILITY ----- FBC 2010 - ACCESSIBILITY

C. FIRE ----- FLORIDA FIRE PREVENTION CODE 2010

D. LIFE SAFETY ----- LIFE SAFETY CODE (NFPA 101) FLORIDA 2009

E. MECHANICAL ----- FBC 2010 - MECHANICAL

F. PLUMBING ----- FBC 2010 - PLUMBING

G. ELECTRICAL ----- NATIONAL ELECTRIC CODE 2008

**AGENCIES HAVING JURISDICTION**

A. AGENCY ----- ORANGE COUNTY BUILDING DEPARTMENT  
ADMINISTRATION BUILDING, 1ST FLOOR  
201 ROSALIND AVENUE  
ORLANDO, FL 32801

**OCCUPANCY REQUIREMENTS**

GROUP "F" CLASSIFICATION: SPECIAL PURPOSE "F-3"  
(FBC 306.4)

**CONSTRUCTION TYPE**

(FBC TABLE 601) GROUP "F-3" OCCUPANCY:  
CONSTRUCTION TYPE V-B, UNPROTECTED, UNSPRINKLED

**OCCUPANT LOAD**

SPECIAL PURPOSE "F-3"  
(300 GROSS S.F. PER PERSON/MECHANICAL) ----- 13.8 OCCUPANTS  
(300 GROSS S.F. PER PERSON/ELECTRICAL) ----- 5.2 OCCUPANTS

TOTAL OCCUPANT LOAD 20.0 OCCUPANTS

THE FACILITY CONTAINS MACHINERY AND EQUIPMENT ONLY AND IS NOT OCCUPIED BY PERSONNEL EXCEPT WHEN MAINTENANCE IS REQUIRED.

**EGRESS CALCULATIONS**

SPECIAL PURPOSE "F-3"  
14 OCCUPANTS X .20' = 2.8"  
3" OF EGRESS REQUIRED 64" OF EGRESS PROVIDED

MINIMUM NUMBER OF EXITS: 1 ACTUAL: 2 PROVIDED  
MAXIMUM TRAVEL DISTANCE: 200 FT. ACTUAL: 73'-0"  
MAXIMUM DEAD END CORRIDOR: 20 FT. ACTUAL: N/A  
MINIMUM CORRIDOR WIDTH: 44" ACTUAL: N/A

**SQUARE FOOTAGE CALCULATIONS**

TOTAL OVERALL FLOOR AREA ----- 6,224 GSF

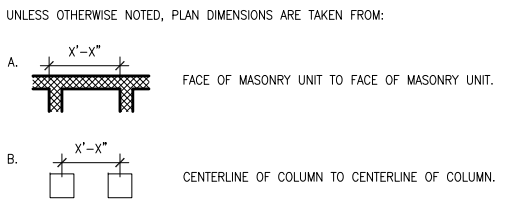
**FLAME SPREAD**

THE INTERIOR FINISHES SHALL BE REQUIRED TO MEET A "CLASS C" FLAME SPREAD INDEX OF 76-200; SMOKE-DEVELOPED INDEX OF 0-450. REFERENCE FLORIDA BUILDING CODE 2010, PARAGRAPH 803.1, TABLE 803.9

# MATERIALS LEGEND

	METAL		FINISHED WOOD MEMBER
	EARTH		GYPSPUM WALL BOARD
	CONCRETE		PLASTER
	CONCRETE MASONRY UNIT		INSULATION
	BRICK MASONRY UNIT		BATT INSULATION
	CONTINUOUS WOOD MEMBER		WOOD BLOCKING

# DIMENSIONING



# ARCHITECTURAL GENERAL NOTES

- CONTRACTOR SHALL VISIT AND INSPECT THE PREMISES, PRIOR TO SUBMITTING THEIR PROPOSAL, TO FAMILIARIZE THEMSELVES WITH THE CONDITIONS UNDER WHICH WORK WILL BE PERFORMED. NO SUBSEQUENT EXTRAS OR ADDITIONS WILL BE ALLOWED ON ANY CLAIM DUE TO LACK OF KNOWLEDGE OF CONDITIONS OR CIRCUMSTANCES ABOUT WHICH THE CONTRACTOR COULD HAVE INFORMED THEMSELVES.
- CONTRACTOR SHALL BE SOLELY RESPONSIBLE FOR THE ACCURACY OF HIS MEASUREMENTS AND TOTAL FINISH REQUIREMENTS TO BE FURNISHED. NO REQUESTS FOR MATERIALS OR INSTALLATION EXTRAS WILL BE CONSIDERED DUE TO MEASUREMENT OR TAKEOFF ERRORS BY CONTRACTOR.
- THE GENERAL CONTRACTOR SHALL BE RESPONSIBLE FOR DISTRIBUTION OF 100% CONSTRUCTION DOCUMENTS TO ALL TRADES AND NOT THE RESPONSIBILITY OF THE ARCHITECT.
- THE CONTRACTOR IS TO PROVIDE ALL LABOR AND MATERIALS TO EXECUTE ALL WORK AS SHOWN ON THESE DRAWINGS WITH THE EXCEPTION OF ITEMS OR AREAS MARKED "NOT IN CONTRACT," "N.I.C.," OR "BY OTHERS".
- THE CONTRACTOR SHALL KEEP SUFFICIENT WORKERS ON THE JOB SITE AT ALL TIMES TO PERFORM THE WORK IN THE MOST EXPEDITIOUS MANNER CONSISTENT WITH GOOD WORKMANSHIP, SOUND BUSINESS PRACTICE AND THE BEST INTEREST OF THE END USER.
- ALL FEES, TAXES, PERMITS, APPLICATIONS, CERTIFICATES OF INSPECTION AND THE FILING OF ALL WORK WITH GOVERNMENTAL AGENCIES SHALL BE THE RESPONSIBILITY OF THE GENERAL CONTRACTOR.
- CONTRACTOR SHALL NOT PROCEED WITH ANY ADDITIONAL WORK OR CHANGES FOR WHICH THEY EXPECT ADDITIONAL COMPENSATION WITHOUT WRITTEN AUTHORIZATION TO PERFORM SUCH WORK.
- CONTRACTOR SHALL AT ALL TIMES KEEP THE PREMISES FREE OF ACCUMULATION OF WASTE MATERIALS OR RUBBISH CAUSED BY HIS OPERATIONS OF THE OPERATIONS OF ANY OTHER CONTRACTORS WITHIN THE AREA OF WORK. METHODS FOR SUCH REMOVAL MUST BE AGREEABLE TO THE OWNER.
- FINAL CLEANING PRIOR TO END USER OCCUPANCY SHALL INCLUDE (BUT NOT BE LIMITED TO): CLEANING OF ALL WOOD AND GLASS SURFACES, DUSTING OF ALL HORIZONTAL SURFACES, VACUUMING OF ALL CARPETED AREAS, REMOVAL OF ALL STAINS, SPOTS, SPILLS, ETC. ON ANY SURFACE, MOP CLEANING AND WAXING OF ALL RESILIENT FLOORS, AND CLEANING ALL VINYL WALL COVERINGS FREE FROM DIRT ADHESIVE OR OTHER FOREIGN MATERIALS.
- GENERAL CONTRACTOR AND HIS VENDORS SHALL DETERMINE AVAILABILITY OF ALL FINISH MATERIALS, TRADES AND ITEMS SHOWN IN THESE DOCUMENTS. ANY DELIVERY THAT MAY CAUSE POTENTIAL PROBLEMS IN MEETING AGREED UPON CONSTRUCTION SCHEDULE SHALL BE BROUGHT TO THE ARCHITECT ATTENTION FOR POSSIBLE REEVALUATION OF MATERIAL DESIGNATION.
- THE CONTRACTOR SHALL BE ANSWERABLE FOR THEIR WORK AND SHALL NOT ACCEPT INSTRUCTION FROM LOCAL PERSONNEL WITHOUT VERIFICATION FROM THE TENANT'S AGREED UPON REPRESENTATIVE. THE CONTRACTOR WILL BE LIABLE FOR ANY EXPENSE CAUSED BY THE EXECUTION AND REMOVAL OF SUCH WORK WITHOUT WRITTEN AUTHORIZATION FROM THE TENANT'S REPRESENTATIVE.
- PROVIDE ALL WOOD BLOCKING NECESSARY FOR THE ATTACHMENT OF MISCELLANEOUS EQUIPMENT INCLUDING BUT NOT LIMITED TO TOILET ACCESSORIES, TV BRACKETS, DOOR HARDWARE, ELECTRICAL DEVICES, EQUIPMENT, GRAB BARS, HANDRAILS, CASEWORK AND MILLWORK, AS APPLICABLE.
- CONTRACTOR SHALL COMPLY WITH ALL THE RULES AND REGULATIONS OF THE BUILDING AS TO HOURS OF AVAILABILITY OF ELEVATORS, LOADING DOCKS, ETC. FOR THE PURPOSE OF DELIVERY AND THE MANNER OF HANDLING MATERIALS, EQUIPMENT AND DEBRIS, TO AVOID CONFLICT OR INTERFERENCE WITH NORMAL BUILDING OPERATIONS.
- EACH CONTRACTOR SHALL VERIFY ALL DIMENSIONS SHOWN ON THE DRAWINGS PRIOR TO PROCEEDING WITH CONSTRUCTION AND OBTAIN ALL MEASUREMENTS REQUIRED FOR PROPER EXECUTION OF WORK. ALL DISCREPANCIES AND OMISSIONS SHALL BE BROUGHT TO THE ATTENTION OF THE ARCHITECT. WHEN VERIFICATION OF EXISTING DIMENSIONS IS REQUIRED, THE CONTRACTOR REQUIRING SAID VERIFICATION FOR THE CONSTRUCTION OR FABRICATION OF HIS MATERIAL SHALL BE THE CONTRACTOR RESPONSIBLE FOR THE PROCUREMENT OF THE FIELD INFORMATION.
- THE TRANSITION OF DIFFERENT FLOORING MATERIALS AT A DOORWAY SHALL OCCUR AT THE CENTERLINE OF DOOR UNLESS INDICATED OTHERWISE.
- ALL WALL SURFACES, DOOR FRAMES, BULKHEADS AND CEILINGS SHALL RECEIVE PAINT WHEN PAINT IS INDICATED ON THE FINISH SCHEDULE OR FINISH PLANS. PAINT SURFACES BEHIND MOVABLE EQUIPMENT AND FURNITURE SAME AS SIMILAR EXPOSED SURFACES. PAINT SURFACES BEHIND PERMANENTLY FIXED EQUIPMENT OR FURNITURE WITH PRIME COAT ONLY BEFORE FINAL INSTALLATION OF EQUIPMENT.
- FIGURED DIMENSIONS TAKE PRECEDENCE OVER SCALED MEASUREMENTS. DO NOT SCALE DRAWINGS.
- DETAILED DRAWINGS AND LARGER SCALE DRAWINGS TAKE PRECEDENCE OVER SMALL SCALE DRAWINGS.
- DOORS NOT OTHERWISE DIMENSIONED SHALL BE 8" FROM FACE OF ADJACENT CMU OR CONCRETE WALL TO ROUGH DOOR OPENING.
- FOR CONSTRUCTION DETAILS NOT SHOWN, USE THE PRODUCT MANUFACTURER'S WRITTEN INSTALLATION INSTRUCTIONS AND STANDARD DETAILS, IN STRICT ACCORDANCE WITH THE PROJECT SPECIFICATION REQUIREMENTS AND DESIGN INTENT.
- PLAN NORTH DIFFERS FROM ACTUAL NORTH. ACTUAL NORTH IS INDICATED ON PLAN SHEETS FOR REMAINDER OF DISCIPLINES UNO. ORDINAL DIRECTIONS ON NON-CIVIL PLAN DRAWINGS ARE IN REFERENCE TO PLAN NORTH UNO.
- IF THE CONTRACTOR ENCOUNTERS ANY UNFORESEEN CONDITION, THE ARCHITECT MUST BE MADE AWARE FOR A POSSIBLE CHANGE IN DESIGN.
- THE CONTRACTOR SHALL REVIEW THE ARCHITECTURAL, STRUCTURE, CIVIL, MECHANICAL, PLUMBING AND ELECTRICAL DRAWINGS FOR LOCATION AND DIMENSIONS OF CHASE, INSERTS, OPENINGS, SLEEVES, DEPRESSIONS AND OTHER PROJECT REQUIREMENTS. ALL DISCREPANCIES AND OMISSIONS SHALL BE BROUGHT TO THE ATTENTION OF THE ARCHITECT PRIOR TO PROCEEDING WITH CONSTRUCTION.
- THESE DRAWINGS WERE DESIGNED FOR THE USE BY AN EXPERIENCED AND QUALIFIED GENERAL CONTRACTOR AND INTERPRETATION OF THE PLANS BY A LAY PERSON IS NOT RECOMMENDED OR AUTHORIZED BY THE ARCHITECT.
- CONTRACTOR SHALL SUBMIT SAMPLES TO THE ARCHITECT AND TENANT FOR REVIEW OF ALL MATERIALS TOGETHER WITH FINISHES AND INTENDED USE IN THE WORK PRIOR TO COMMENCEMENT OF WORK.
- WHEN THE JOB IS SUBSTANTIALLY COMPLETE, THE GENERAL CONTRACTOR SHALL PREPARE A PUNCH LIST OF ITEMS TO BE COMPLETED OR CORRECTED AND SUBMIT THIS LIST TO THE ARCHITECT AND TO THE END USER. FAILURE TO INCLUDE ANY ITEMS ON THIS LIST DOES NOT ALTER THE RESPONSIBILITY OF THE CONTRACTOR TO COMPLETE THE WORK IN ACCORDANCE WITH THESE DOCUMENTS.
- CONTRACTOR SHALL BE RESPONSIBLE FOR PROVIDING THE END USER (IN WRITING) ALL MANUFACTURER'S MANUALS, WARRANTIES, AND RECOMMENDED MAINTENANCE PROCEDURES/SCHEDULES FOR ALL EQUIPMENT AND FINISHES INSTALLED.
- ALL WORK SHALL BE PERFORMED IN ACCORDANCE WITH THE RULES AND REGULATIONS OF THE GOVERNMENTAL AGENCY HAVING JURISDICTION AND SHALL CONFORM TO ALL LIFE SAFETY AND SANITARY LAWS, CITY, COUNTY, STATE, AND/OR FEDERAL ORDINANCES WHICH APPLY.
- THE MANUFACTURER'S STANDARD DETAILS OR APPROVED SHOP DRAWINGS / DATA SHEETS, IN ACCORDANCE WITH THE PROJECT SPECIFICATIONS, SHALL APPLY UNLESS OTHERWISE DETAILED IN CONSTRUCTION DOCUMENTS.

NO.	ISSUE	DATE	BY
1	7/2015	7/2015	CK

**BORRELLI PARTNERS**  
ARCHITECTS

729 VASAR STREET ORLANDO, FL 32804  
(407) 461-1118

**BLACK & VEATCH**  
Building a world of difference.

Black & Veatch Corporation  
201 South Orange Avenue, Suite 500  
Orlando, Florida 32801

ORANGE COUNTY UTILITIES  
SOUTH WATER RECLAMATION FACILITY  
PHASE V IMPROVEMENTS

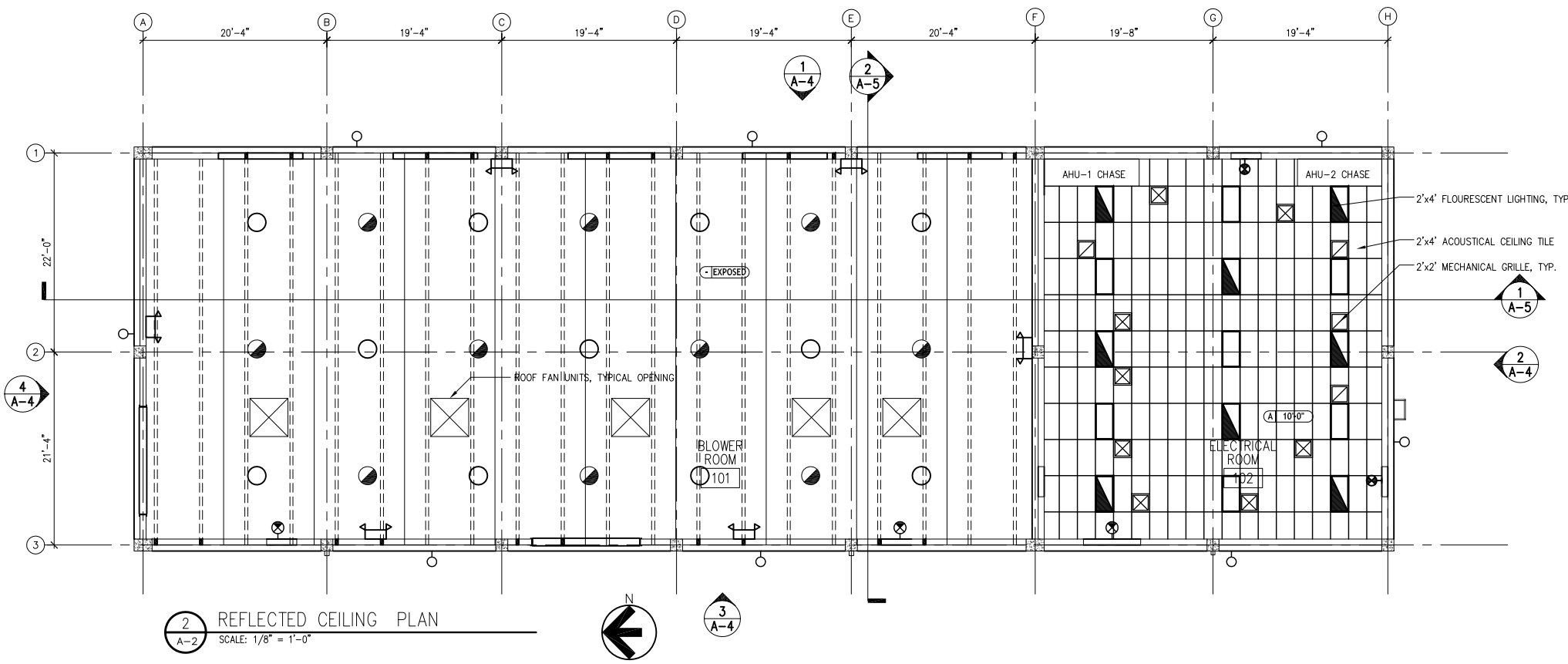
ARCHITECTURAL  
SOUTH BLOWER BUILDING  
ARCHITECTURAL INFORMATION

DESIGNED: J.L.M.  
 DETAILED: J.L.M.  
 CHECKED: J.L.M.  
 APPROVED: J.L.M.  
 DATE: JANUARY 2015

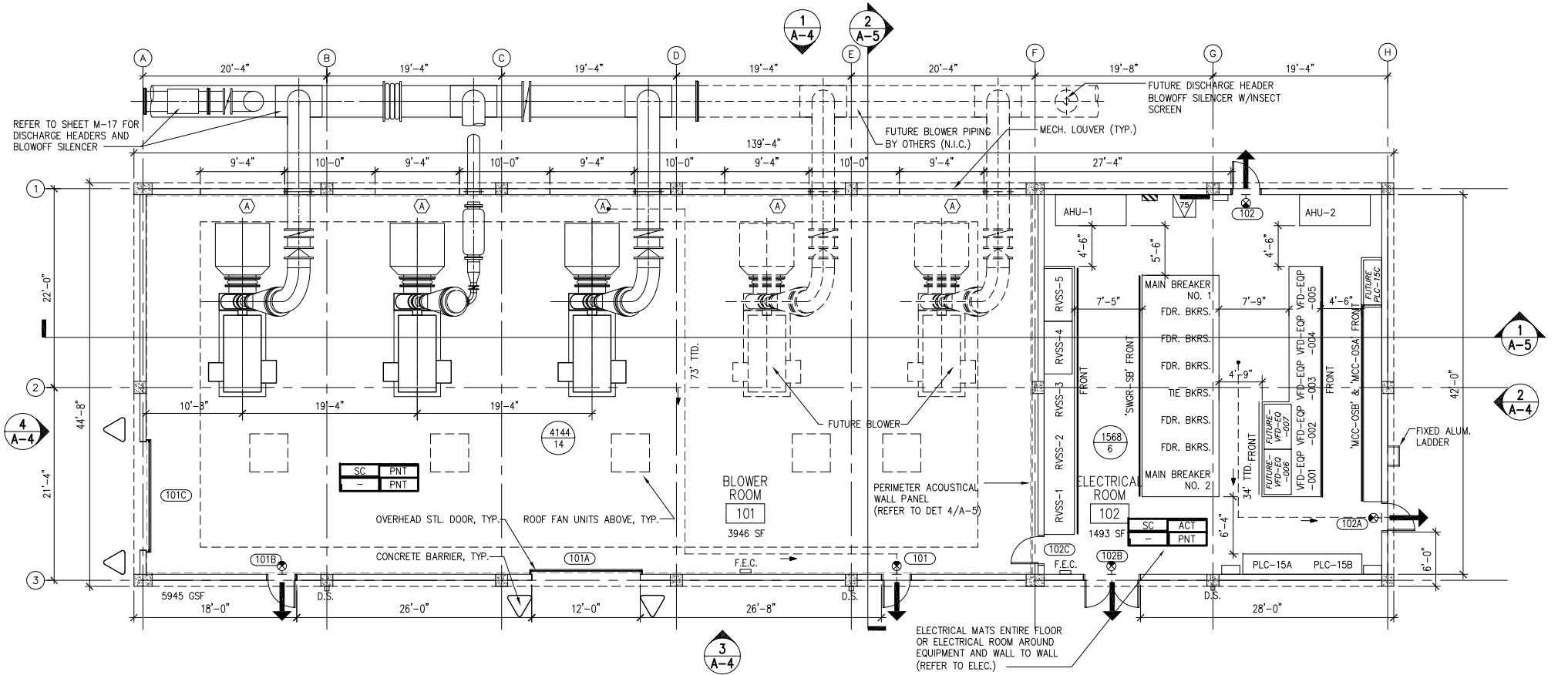
ARCHITECT OF RECORD:  
 JAMES L. MOORE  
 FLORIDA LICENSE NO.: AR95890

PROJECT NO.  
 180761

A-1  
 SHEET  
 101 OF 364



2 REFLECTED CEILING PLAN  
SCALE: 1/8" = 1'-0"



1 FLOOR/LIFE SAFETY PLAN  
SCALE: 1/8" = 1'-0"

REFLECTED CEILING PLAN LEGEND

	2'x4' LAY-IN FLUORESCENT LIGHT FIXTURE		2'x4' LAY-IN FLUORESCENT EMERGENCY LIGHT FIXTURE
	HIGH BAY SUSPENDED LIGHT FIXTURE		HIGH BAY SUSPENDED EMERGENCY LIGHT FIXTURE
	WALL MOUNTED EXIT LIGHT FIXTURE		WALL MOUNTED LIGHT FIXTURE
	2'x2' SUPPLY AIR GRILLE		2'x2' RETURN AIR GRILLE
	EMERGENCY FIXTURE		2'x4' ACOUSTICAL CEILING TILE

REFER TO ELECTRICAL DRAWINGS FOR HEAT/SMOKE DETECTORS TO FACP AND THEN TO SCADA

FINISH NOTES

- BLOWER ROOM #101:**  
 FLOORS: (SC) SEALED CONCRETE  
 WALLS: (PNT) PAINT ALL WALLS PRIOR TO INSTALLING ACOUSTICAL PANELS  
 CEILING: (PNT) PAINT ALL EXPOSED STRUCTURE
- ELECTRICAL ROOM #102:**  
 FLOORS: (SC) SEALED CONCRETE (ELECTRICAL MATS SEE NOTE)  
 WALLS: (PNT) PAINT  
 CEILING: (ACT) ACOUSTICAL TILE
- NOTE**  
 FLOOR MATS TO BE MINIMUM 1/4" THICK, PRIME QUALITY RUBBER COMPOUND FREE OF CALENDARING AND CURLING DEFECTS. MATS SHALL HAVE NARROW CONTINUOUS LONGITUDINAL CORRUGATIONS AND SHALL BE BLACK IN COLOR. MATS SHALL BE ELECTRIC INSULATING TO 20,000VMS VOLTS AND CONFORMING TO ASTM D178, TYPE II, CLASS 2 AND SHALL BE CONTINUOUSLY BRANDED ON BACK. PROVIDE BEVEL EDGES OF MATS OR ATTACH ELECTRIC INSULATING RUBBER REDUCING STRIPS AS APPROVED TO PROVIDE A NON-TRIP PERIMETER. REFER TO ELECTRICAL SPECIFICATION.

LIFE SAFETY LEGEND

SYMBOL	DESCRIPTION
	WALL MOUNTED EXIT LIGHT
	TRAVEL DISTANCE
	PRIMARY EGRESS
	ROOM SQUARE FOOTAGE
	ROOM OCCUPANT CAPACITY
	SURFACE MTD. FIRE EXTINGUISHER CABINET

GENERAL NOTES

- ALL SIGNAGE SHALL BE INSTALLED IN ACCORDANCE WITH APPLICABLE CODES.
- SEE ELECTRICAL PLANS FOR FIRE ALARM/ STROBE LOCATIONS, SMOKE/ HEAT DETECTOR LOCATIONS, AND FOR EMERGENCY LIGHT LOCATIONS.
- ALL SIGNAGE INCLUDING MAXIMUM OCCUPANCY, FIRE EXTINGUISHER INSIDE EXIT DIAGRAMS, ETC. TO BE PER NFPA STANDARDS AND REQUIREMENTS.

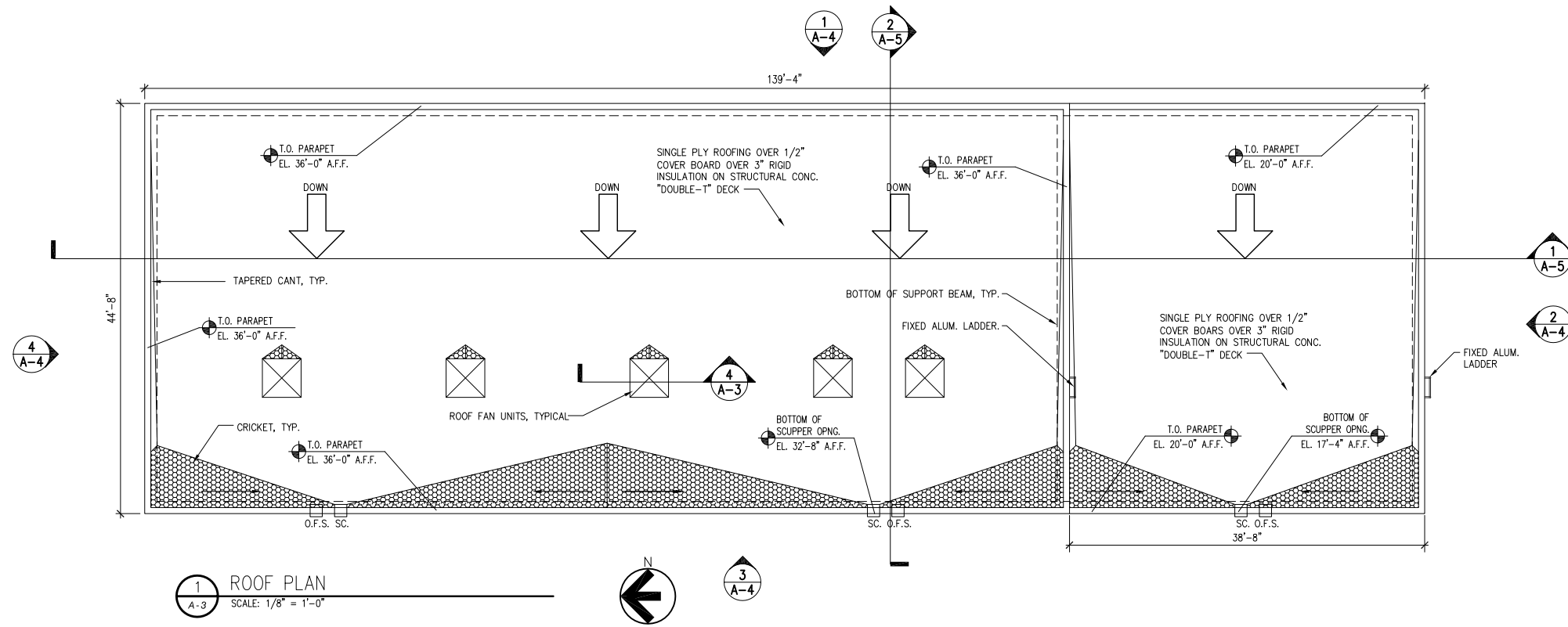
DATE	REVISIONS AND RECORD OF ISSUE	IND.	BY	APP.
7/2015	BID ISSUE			

**BORRELLI PARTNERS**  
 ARCHITECTURE & INTERIOR DESIGN  
 720 VASAR STREET ORLANDO, FL 32804  
 (407) 461-1118  
 WWW.BORRELLIPARTNERS.COM

**BLACK & VEATCH**  
 Building a world of difference.  
 Black & Veatch Corporation  
 201 South Orange Avenue, Suite 500  
 Orlando, Florida 32801  
 Certificate No. 8132

**ORANGE COUNTY UTILITIES**  
 SOUTH WATER RECLAMATION FACILITY  
 PHASE V IMPROVEMENTS  
 ARCHITECTURAL  
 SOUTH BLOWER BUILDING  
 FLOOR/LIFE SAFETY PLAN  
 AND REFLECTED CEILING PLAN

DESIGNED: J.L.M.
DETAILED: J.L.M.
CHECKED: J.L.M.
APPROVED: J.L.M.
DATE: JANUARY 2015
ARCHITECT OF RECORD: JAMES L. MOORE FLORIDA LICENSE NO.: AR95890
PROJECT NO. 180761
A-2 SHEET 102 OF 364



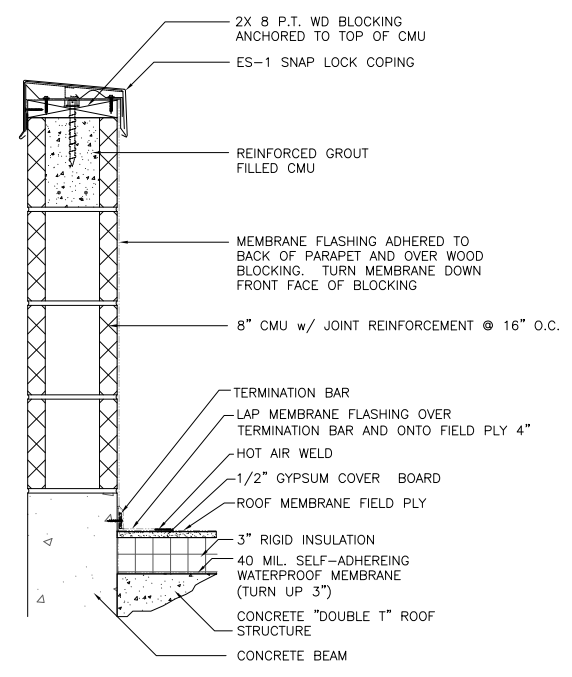
1 ROOF PLAN  
SCALE: 1/8" = 1'-0"

ROOF PLAN NOTES

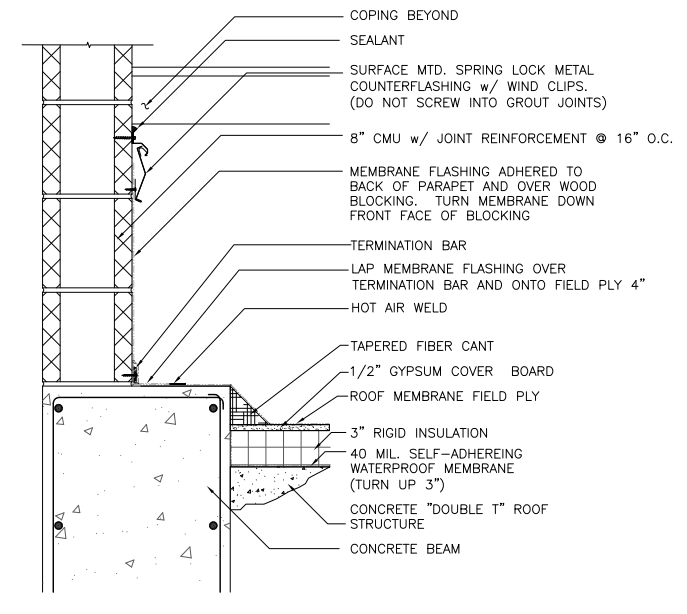
1. MAIN ROOF SLOPE IS 1/4" PER FOOT.
2. REFER TO ELECTRICAL DRAWINGS FOR APPLICABLE LIGHTNING PROTECTION REQUIREMENTS.
3. OVERFLOW SCUPPERS AND DOWNSPOUTS ARE SIZED AS REGIONAL BUILDING CODE MANDATES.
4. ALL MECHANICAL, ELECTRICAL AND PLUMBING PENETRATIONS THROUGH ROOFING TO BE MINIMIZED TO GREATEST EXTENT POSSIBLE.
5. PROVIDE R-19 MINIMUM ROOFING VALUE OVER CONDITIONED SPACES.
6. REFER TO ELECTRICAL FOR LIGHTNING PROTECTION.

ROOF PLAN LEGEND

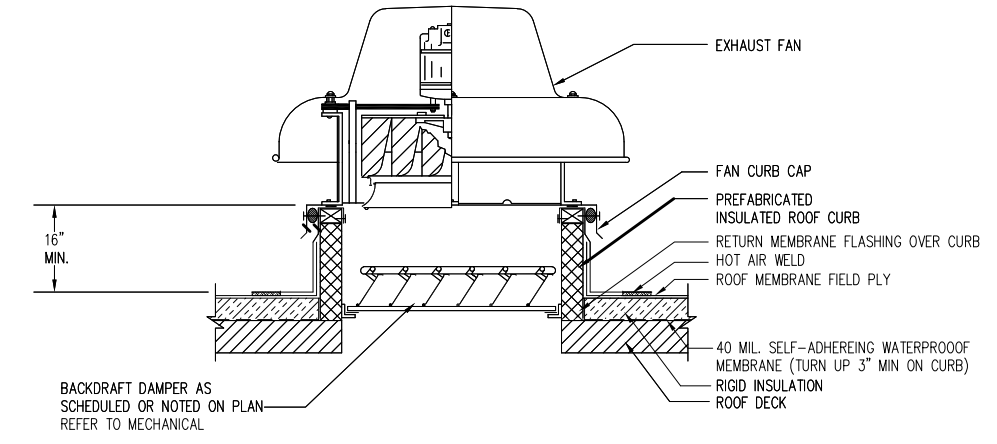
SYMBOL	DESCRIPTION
	DIRECTION OF ROOF STRUCTURE SLOPE DOWN
	TOP OF PARAPET ELEVATION
	OVERFLOW SCUPPER TO DOWNSPOUT TIE-INTO STORM - SEE CIVIL
	CRICKET-TAPERED INSULATION



2 ROOF DETAIL  
SCALE: 1-1/2" = 1'-0"



3 ROOF DETAIL  
SCALE: 1-1/2" = 1'-0"



4 ROOF FAN CURB DETAIL  
SCALE: NTS

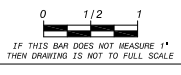
NO.	DATE	REVISIONS AND RECORD OF ISSUE	BY	CHK	APP
1	7/2015	BID ISSUE			
2					
3					
4					

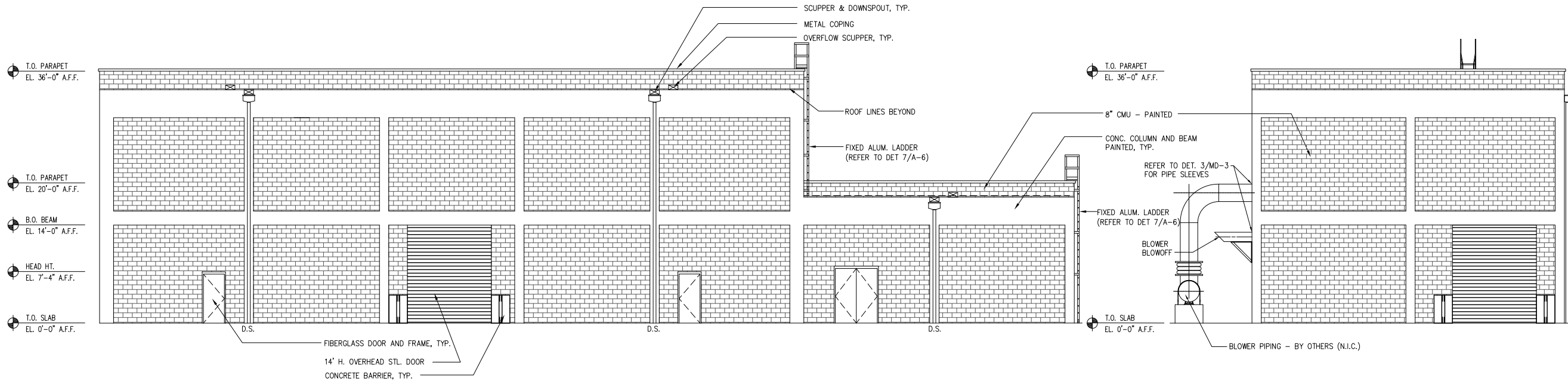
**BORRELLI PARTNERS**  
ARCHITECTS  
720 VASAR STREET, ORLANDO, FL 32804  
(407) 461-1118  
www.borrellipartners.com

**BLACK & VEATCH**  
Building a world of difference.  
Black & Veatch Corporation  
201 South Orange Avenue, Suite 500  
Orlando, Florida 32801  
Certificate No. 8132

**ORANGE COUNTY UTILITIES**  
SOUTH WATER RECLAMATION FACILITY  
PHASE V IMPROVEMENTS  
ARCHITECTURAL  
SOUTH BLOWER BUILDING  
ROOF PLAN AND DETAILS

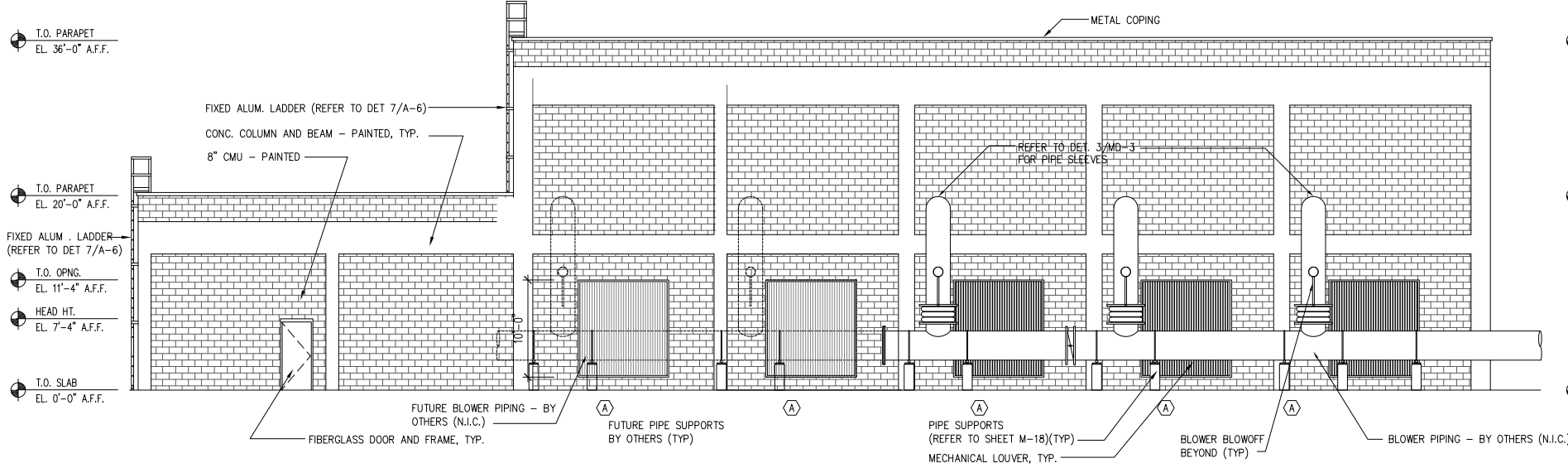
DESIGNED: J.L.M.  
DETAILED: J.L.M.  
CHECKED: J.L.M.  
APPROVED: J.L.M.  
DATE: JANUARY 2015  
ARCHITECT OF RECORD:  
JAMES L. MOORE  
FLORIDA LICENSE NO.:  
AR95890  
PROJECT NO.  
180761  
**A-3**  
SHEET  
103 OF 364



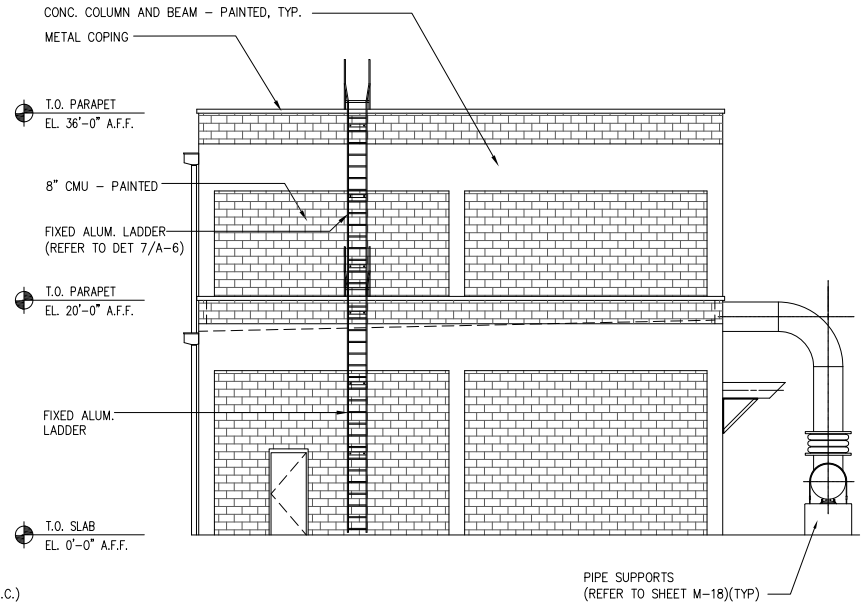


3 EXTERIOR ELEVATION - WEST  
SCALE: 1/8" = 1'-0"

4 EXTERIOR ELEVATION - NORTH  
SCALE: 1/8" = 1'-0"



1 EXTERIOR ELEVATION - EAST  
SCALE: 1/8" = 1'-0"



2 EXTERIOR ELEVATION - SOUTH  
SCALE: 1/8" = 1'-0"

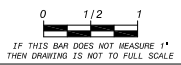
NO.	DATE	DESCRIPTION	BY	CHK	APP
1	7/2015	BID ISSUE			
2		REVISIONS AND RECORD OF ISSUE			
3					
4					
5					
6					
7					
8					
9					
10					

**BORRELLI PARTNERS**  
ARCHITECTURAL PARTNERS  
720 VASAR STREET ORLANDO, FL 32804  
(407) 461-1118  
WWW.BORRELLIPARTNERS.COM

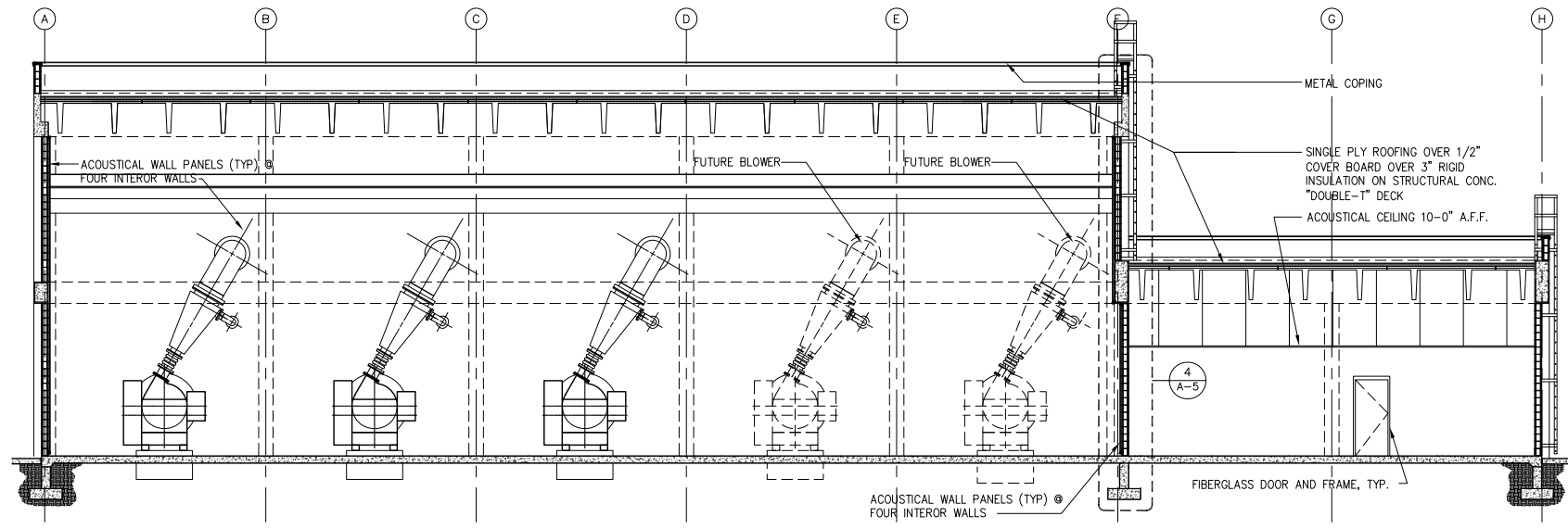
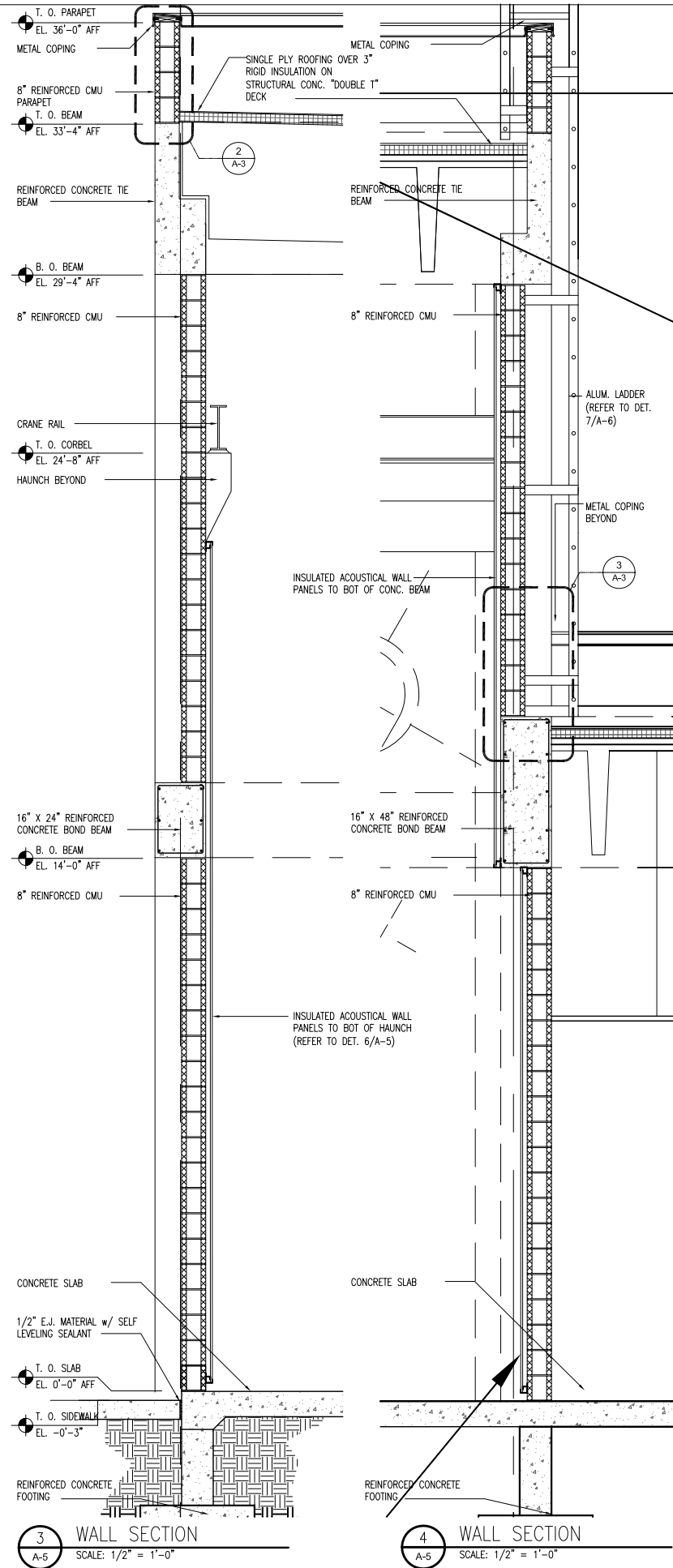
**BLACK & VEATCH**  
Building a world of difference.  
Black & Veatch Corporation  
201 South Orange Avenue, Suite 500  
Orlando, Florida 32801  
Certificate No. 8132

ORANGE COUNTY UTILITIES  
SOUTH WATER RECLAMATION FACILITY  
PHASE V IMPROVEMENTS  
ARCHITECTURAL  
SOUTH BLOWER BUILDING  
EXTERIOR ELEVATIONS

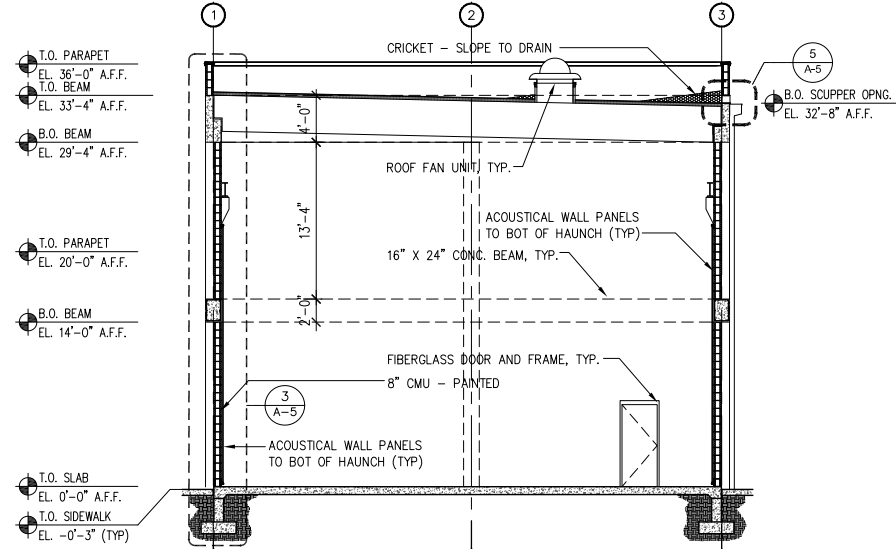
DESIGNED:	J. L. M.
DETAILED:	J. L. M.
CHECKED:	J. L. M.
APPROVED:	J. L. M.
DATE:	JANUARY 2015
ARCHITECT OF RECORD:	JAMES L. MOORE
FLORIDA LICENSE NO.:	AR95890
PROJECT NO.	180761
SHEET	A-4
104 OF 364	



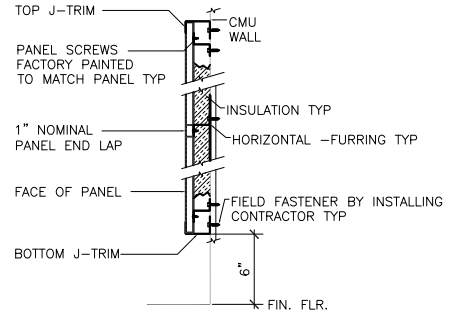
PD180637  
01/06/15



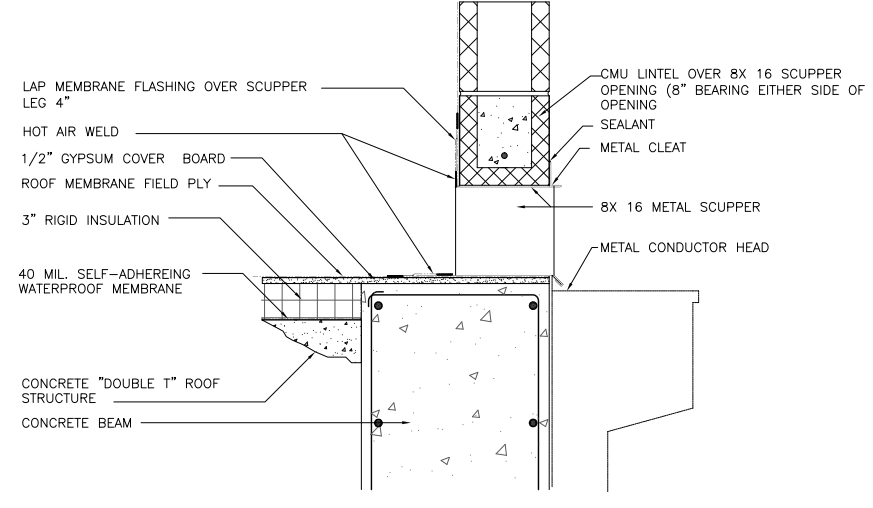
1 BUILDING SECTION  
SCALE: 1/8" = 1'-0"



2 BUILDING SECTION  
SCALE: 1/8" = 1'-0"



6 ACOUSTICAL PANEL DETAIL  
SCALE: 1-1/2" = 1'-0"



5 SCUPPER DETAIL  
SCALE: 1-1/2" = 1'-0"

- T.O. PARAPET  
EL. 36'-0" A.F.F.
- T.O. BEAM  
EL. 33'-4" A.F.F.
- B.O. BEAM  
EL. 29'-4" A.F.F.
- T.O. PARAPET  
EL. 20'-0" A.F.F.
- B.O. BEAM  
EL. 14'-0" A.F.F.
- T.O. SLAB  
EL. 0'-0" A.F.F.
- T.O. SIDEWALK  
EL. -0'-3" (TYP)

NO.	DATE	ISSUE	BY	CHK	APP
1	7/2015	BID ISSUE			
2		REVISIONS AND RECORD OF ISSUE			
3					
4					
5					
6					

**BORRELLI PARTNERS**  
ARCHITECTURAL FIRM  
720 VASAR STREET ORLANDO, FL 32834  
(407) 461-1118  
WWW.BORRELLIPARTNERS.COM

**BLACK & VEATCH**  
Building a world of difference.  
Black & Veatch Corporation  
201 South Orange Avenue, Suite 500  
Orlando, Florida 32801  
Certificate No. 8132

**ORANGE COUNTY UTILITIES**  
**SOUTH WATER RECLAMATION FACILITY**  
**PHASE V IMPROVEMENTS**  
ARCHITECTURAL  
**SOUTH BLOWER BUILDING**  
**BUILDING AND WALL SECTIONS**

DESIGNED: J.L.M.  
DETAILED: J.L.M.  
CHECKED: J.L.M.  
APPROVED: J.L.M.  
DATE: JANUARY 2015  
ARCHITECT OF RECORD:  
JAMES L. MOORE  
FLORIDA LICENSE NO.:  
AR95890  
PROJECT NO.  
**180761**  
**A-5**  
SHEET  
105 OF 364

# DOOR SCHEDULE

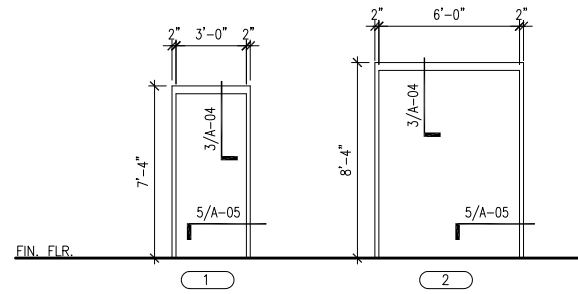
DOOR NUMBER	DOOR			FRAME		DETAILS			REMARKS/LOCATION
	SIZE (WxHxT)	TYPE	MATERIAL	TYPE	MATERIAL	HEAD	JAMB	HW SET	
101	3'-0"x7'-0"x1-3/4"	A	FG1	1	FG	3/A-6	5/A-6	3.0	INSULATED, WEATHERSTRIPPING, RAIN GD.
101A	12'-0"x14'-0"	C	STL.	---	---	6/A-6	7/A-6	5.0	OVERHEAD ROLL-UP DOOR
101B	3'-0"x7'-0"x1-3/4"	A	FG1	1	FG	3/A-6	5/A-6	3.0	INSULATED, WEATHERSTRIPPING, RAIN GD.
101C	12'-0"x14'-0"	C	STL.	---	---	6/A-6	7/A-6	5.0	OVERHEAD ROLL-UP DOOR
102	3'-0"x7'-0"x1-3/4"	A	FG1	1	FG	3/A-6	5/A-6	2.0	INSULATED, WEATHER STRIPPING, RAIN GUARD (PANIC HARDWARE)
102A	3'-0"x7'-0"x1-3/4"	A	FG1	1	FG	3/A-6	5/A-6	2.0	INSULATED, WEATHER STRIPPING, RAIN GUARD (PANIC HARDWARE)
102B	PR3'-0"x8'-0"x1-3/4"	B	FG1	2	FG	3/A-6	5/A-6	1.0	INSULATED, WEATHER STRIPPING, RAIN GUARD (PANIC HARDWARE)
102C	3'-0"x7'-0"x1-3/4"	A	FG1	1	FG	3/A-6	5/A-6	4.0	INSULATED, WEATHERSTRIPPING, RAIN GD.

# GENERAL NOTES

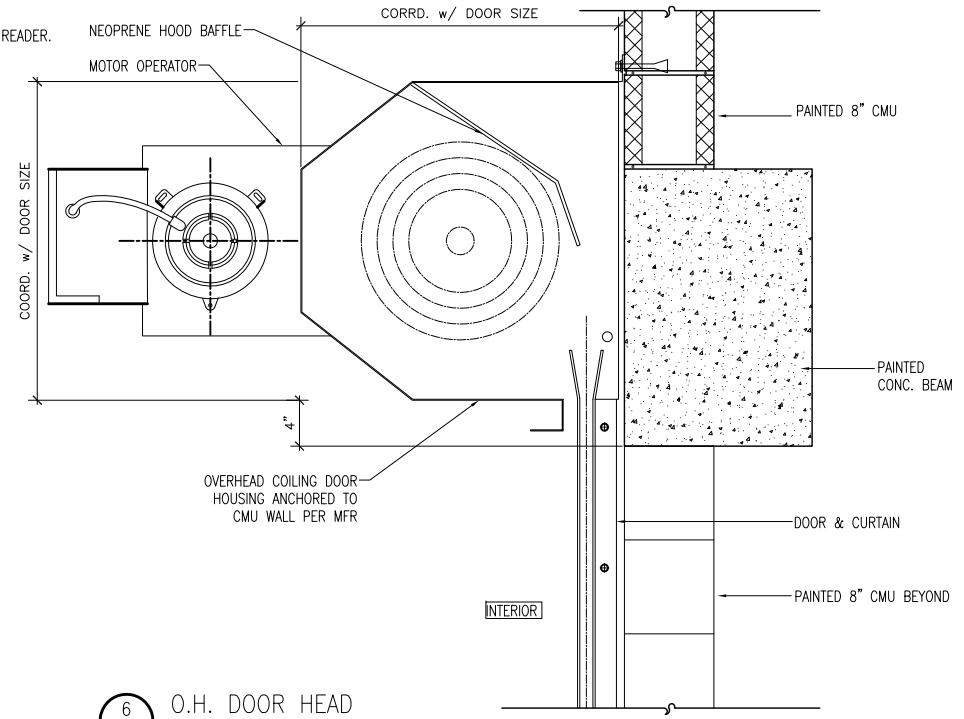
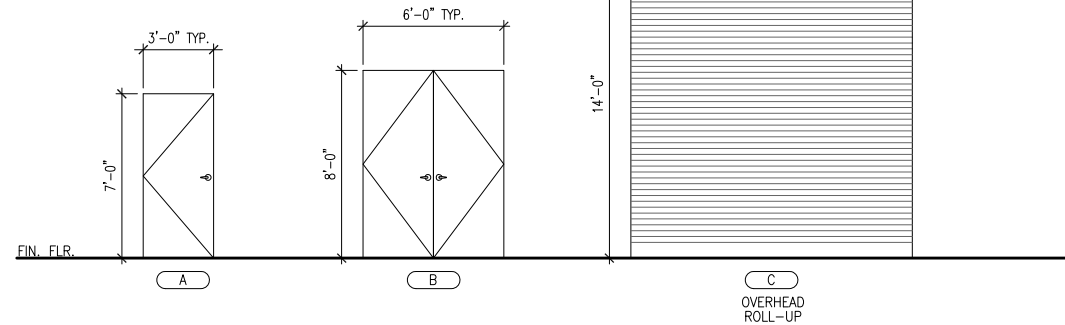
## DOOR AND HARDWARE NOTES -

- ALL DOORS AND HARDWARE SHALL COMPLY WITH N.F.P.A. 101-5-2.1.5. ALL DOORS AND HARDWARE SHALL COMPLY WITH THE FLORIDA ACCESSIBILITY CODE, A.D.A. FEDERAL REGULATION CODES, UTILIZING A LEVER LATCH OR LOCKSET AND OC STANDARDS.
- PERIMETER ANCHORING FOR ALL EXTERIOR DOORS AND WINDOW FRAMING SYSTEMS TO BE HURRICANE HARDENED TO COMPLY WITH MIAMI-DADE COUNTY PROTOCOLS. REFER TO MANUFACTURER'S PRODUCT APPROVAL DRAWINGS AND SPECIFICATIONS FOR REQUIRED ANCHORING AND CONNECTIONS.
- DOORS TO BE COMPATIBLE FOR FUTURE CARD READER.

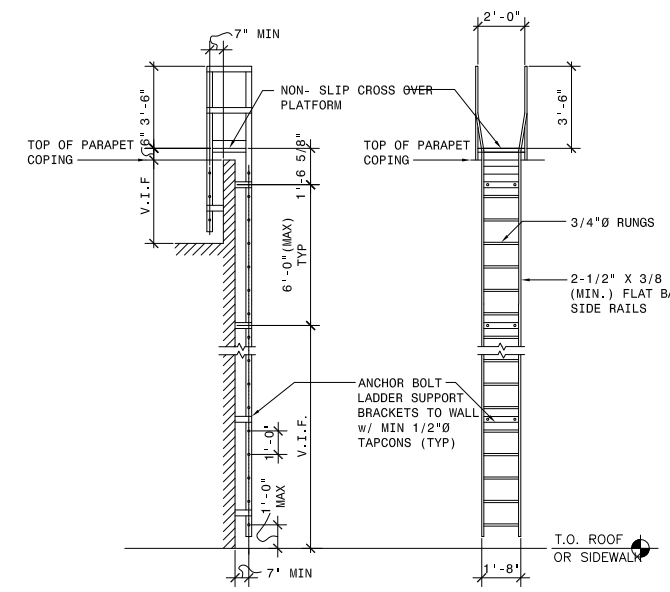
## FRAME TYPES



## DOOR TYPES

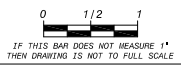


6 O.H. DOOR HEAD  
SCALE: 1-1/2" = 1'-0"

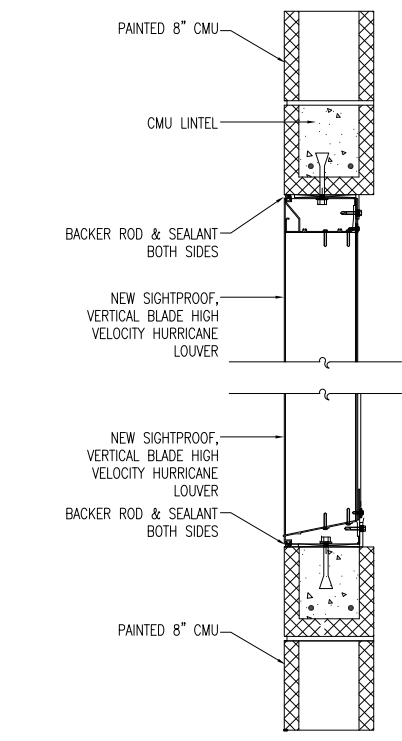


7 ALUMINUM LADDER DETAILS  
SCALE: 1/4" = 1'-0"

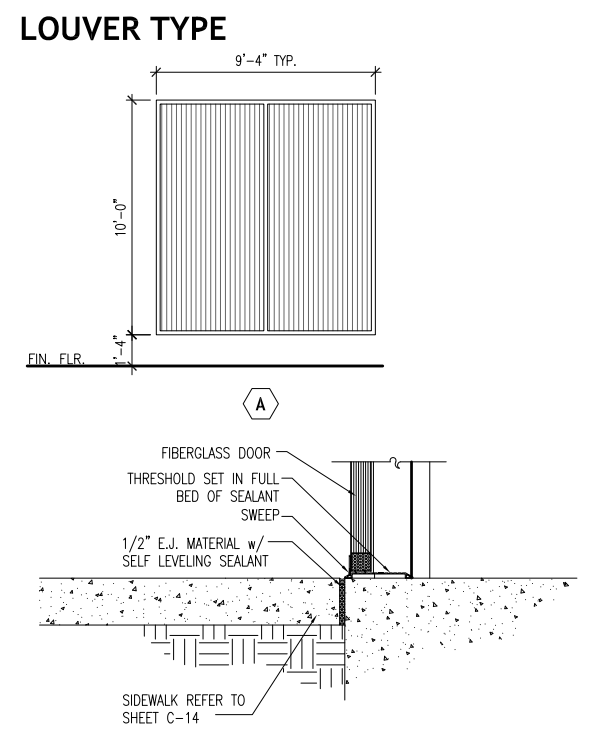
NOTE:  
FIXED LADDERS WILL COMPLY W/ OSHA STANDARD-29CFR PART 1910.27



IF THIS BAR DOES NOT MEASURE 1" THEN DRAWING IS NOT TO FULL SCALE

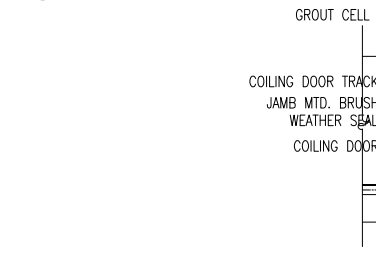


1 LOUVER DETAIL HEAD/SILL  
SCALE: 1-1/2" = 1'-0"

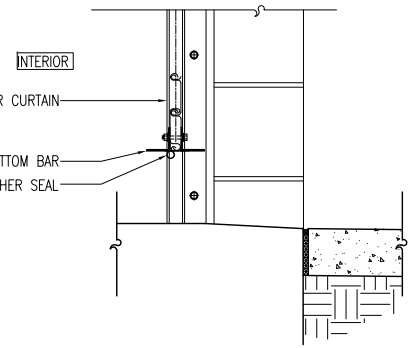


4 DOOR SILL DETAIL  
SCALE: 1-1/2" = 1'-0"

3 H.M. DOOR HEAD AT CMU  
SCALE: 1-1/2" = 1'-0"



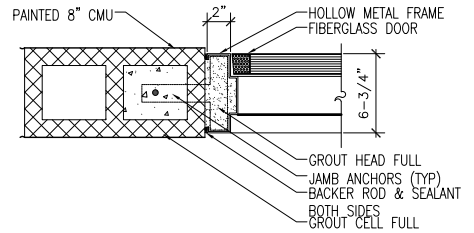
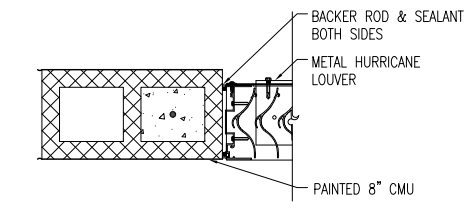
7 O.H. DOOR JAMB  
SCALE: 1-1/2" = 1'-0"



8 O.H. DOOR SILL  
SCALE: 1/8" = 1'-0"

5 H.M. DOOR JAMB AT CMU  
SCALE: 1/8" = 1'-0"

2 LOUVER DETAIL JAMB  
SCALE: 1/8" = 1'-0"



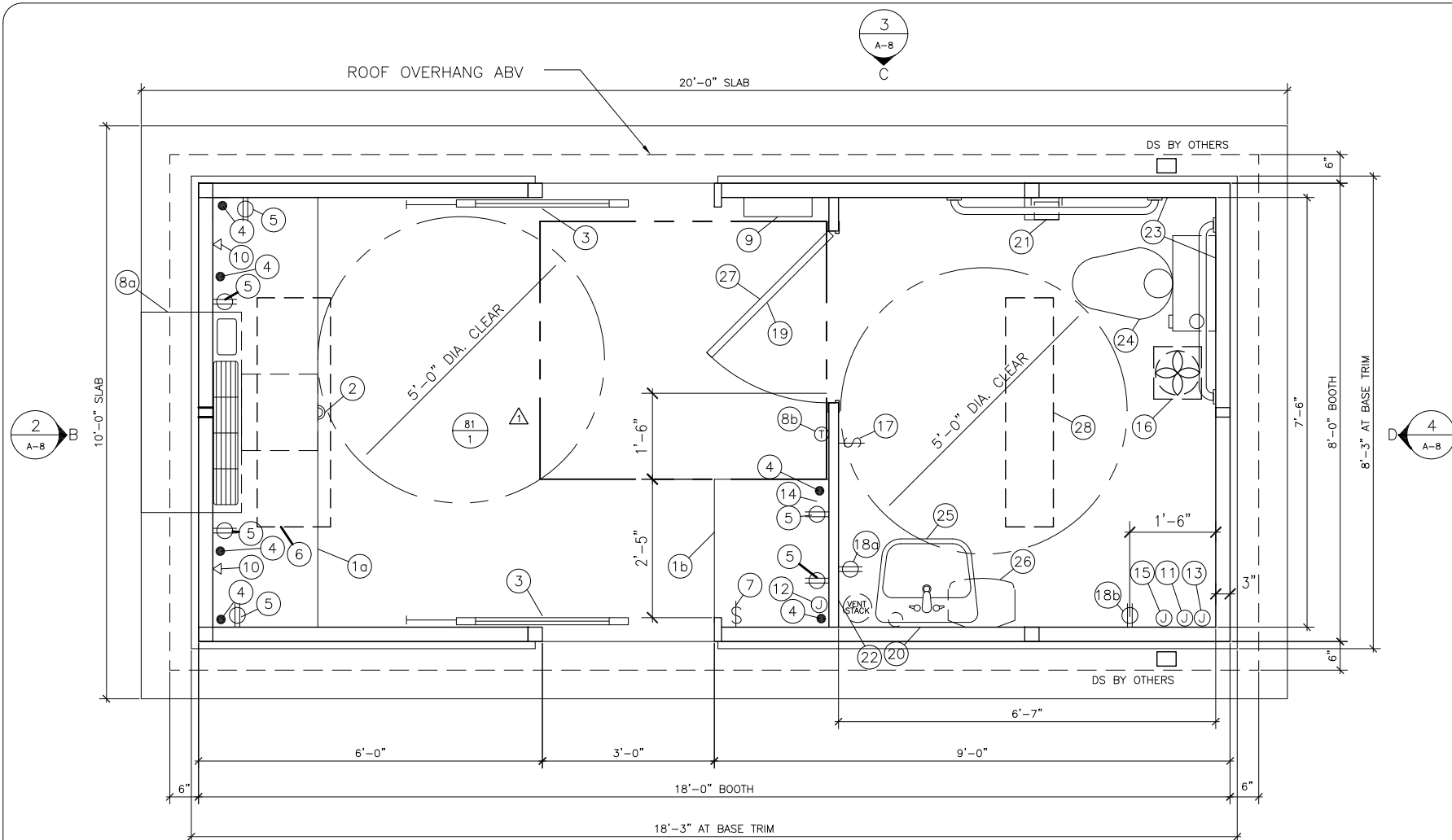
**ORANGE COUNTY UTILITIES**  
**SOUTH WATER RECLAMATION FACILITY**  
**PHASE V IMPROVEMENTS**  
**ARCHITECTURAL**  
**SOUTH BLOWER BUILDING**  
**DOOR SCHEDULE AND DETAILS**

DESIGNED: J.L.M.  
 DETAILED: J.L.M.  
 CHECKED: J.L.M.  
 APPROVED: J.L.M.  
 DATE: JANUARY 2015  
 ARCHITECT OF RECORD:  
 JAMES L. MOORE  
 FLORIDA LICENSE NO.:  
 AR95890

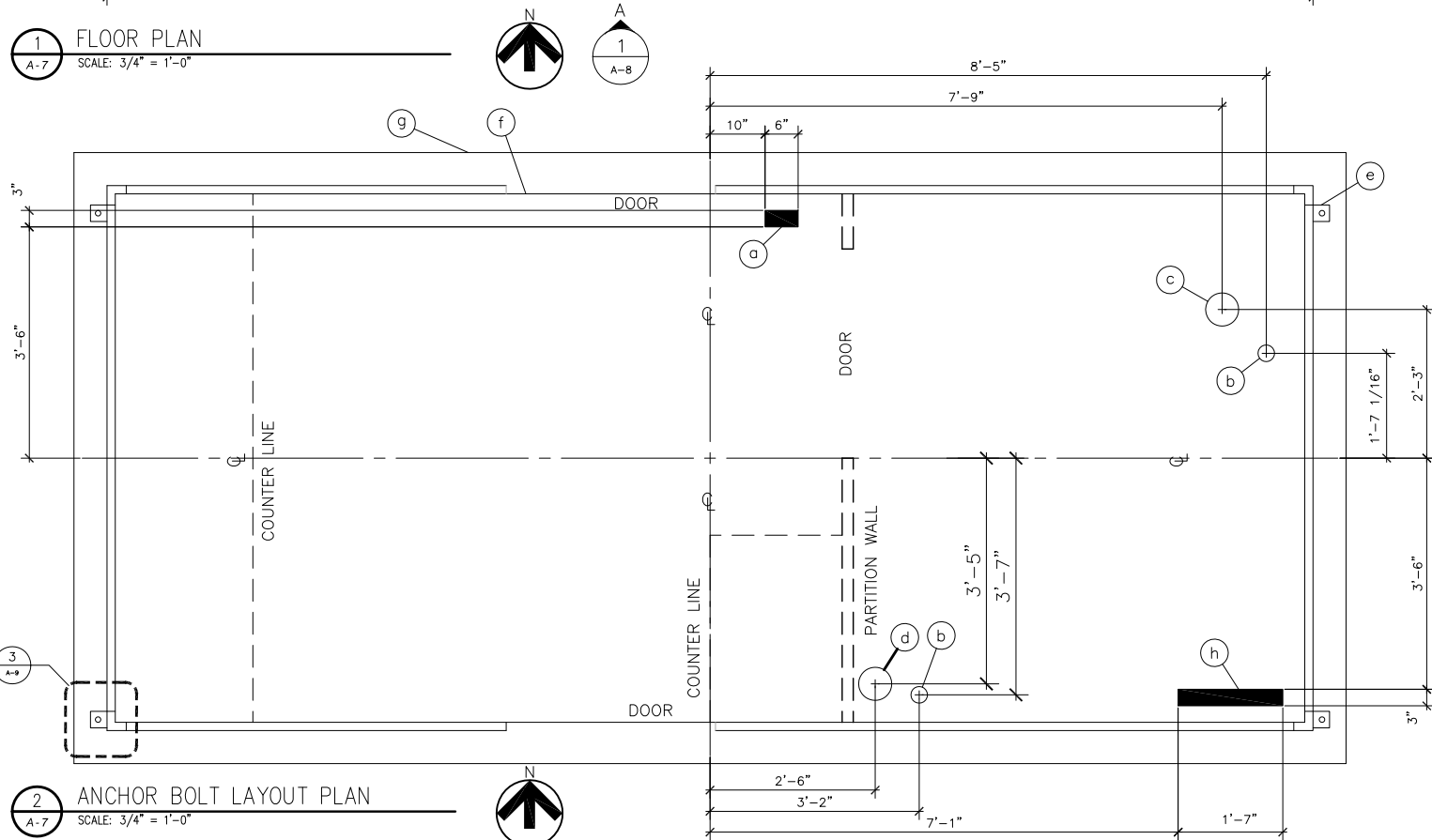
PROJECT NO.  
**180761**  
**A-6**  
 SHEET  
 106 OF 364

7/2015 BID ISSUE  
 DATE  
 CYCNET ID: 50.3010  
 WFA: 6.0mg  
 SAVED: VANT18643\_10/15/2013 2:24:04 PM  
 PLOTTED: VANT18643\_9/11/2013 3:09:  
 USER: VANT18643  
 DWG VER: 1000

**BLACK & VEATCH**  
 Building a world of difference.  
 Black & Veatch Corporation  
 201 South Orange Avenue, Suite 500  
 Orlando, Florida 32801  
 Certificate No. 8132



1 FLOOR PLAN  
SCALE: 3/4" = 1'-0"



2 ANCHOR BOLT LAYOUT PLAN  
SCALE: 3/4" = 1'-0"

BUILDING NOTES:

- 1a. COUNTER- 22" DEEP PLASTIC LAMINATE MOUNTED 32" ABOVE FLOOR.
- 1b. COUNTER- 24" DEEP PLASTIC LAMINATE MOUNTED 32" ABOVE FLOOR.
2. STORAGE DRAWER MOUNTED BELOW COUNTER 1a.
3. DOOR- 36" WIDE, SLIDING STEEL WITH WEATHER-STRIPPING, BALL BEARING HANGERS, HEAVY DUTY TRACK, HOOK BOLT LOCK, AND HARDWARE. 2-REQ'D.
4. 2" DIAMETER HOLE IN COUNTER FOR DROP CORDS. 6-REQ'D.
5. DUPLEX OUTLET MOUNTED BELOW COUNTER. 6-REQ'D.
6. FLUORESCENT LIGHT- 4 LAMP 32 WATT LAMP FIXTURE WITH ACRYLIC LENS & WALL SWITCH.
7. SWITCH FOR INTERIOR LIGHT.
- 8a. ZONELINE UNIT- 240V/14,800 BTU COOL UNIT WITH 5 KW HEAT STRIP AND WALL MOUNTED THERMOSTAT CONTROL.
- 8b. THERMOSTAT FOR ZONELINE UNIT (DIGITAL).
9. CIRCUIT BREAKER PANEL- SQUARE-D #Q0112M100, 120/240vac, 12 SPACE, 10-3 WIRE WITH GROUND BAR AND 100 AMP MAIN BREAKER INCLUDED. MOUNTED 60" A.F.F. (RECESSED).
10. DATA JACK LOCATED BELOW COUNTER 1a WITH 1/2" RACEWAY TO JUNCTION BOX ITEM #11. 2-REQ'D.
11. 4" X 4" JUNCTION BOX LOCATED NEAR FLOOR SLOT "h" FOR LOW VOLTAGE WIRING. LOCATED 18" ABOVE FLOOR.
12. 2"W X 4"H JUNCTION BOX, CENTERLINE OF BOX LOCATED 60" ABOVE FLOOR WITH 1/2" RACEWAY TO JUNCTION. BOX ITEM #13.
13. 4" X 4" JUNCTION BOX LOCATED NEAR FLOOR SLOT "h" FOR CUSTOMER USE. LOCATED 18" ABOVE FLOOR.
14. 2"W X 4"H JUNCTION BOX, LOCATED ABOVE COUNTER 1b WITH 1/2" RACEWAY TO JUNCTION BOX ITEM #15.
15. 4" X 4" JUNCTION BOX LOCATED NEAR FLOOR SLOT "h" FOR CUSTOMER USE. LOCATED 18" ABOVE FLOOR.

REST ROOM NOTES:

16. EXHAUST FAN, 80 CFM.
17. SWITCH FOR REST ROOM LIGHT AND EXHAUST FAN.
- 18a. GFI RECEPTACLE MOUNTED 48" ABOVE FLOOR.
- 18b. GFI RECEPTACLE MOUNTED 18" ABOVE FLOOR.
19. COAT HOOK MOUNTED ON DOOR.
20. MIRROR.
21. TOILET PAPER HOLDER.
22. PAPER TOWEL DISPENSER.
23. OFF WHITE FIBERGLASS REINFORCED PANEL BACK SPLASH.
24. WATER CLOSET WITH OPEN FRONT SEAT SHIPPED LOOSE WITH ON SITE INSTALLATION BY OTHERS.
25. LAVATORY WITH CHROME FAUCET SHIPPED LOOSE WITH ON SITE INSTALLATION BY OTHERS.
26. ARISTON 2-1/2 GALLON POINT OF USE WATER HEATER SHIPPED LOOSE WITH ON SITE INSTALLATION BY OTHERS.
27. SWINGING PRIVACY DOOR WITH LOCK.
28. FLUORESCENT LIGHT FIXTURE 2 LAMP 32 WATT FIXTURE WITH WRAP AROUND LENS.

GENERAL NOTES:

BASIS OF DESIGN PAR-KUT BOOTHS ARE OF SINGLE UNIT WELDED STEEL CONSTRUCTION, FACTORY ASSEMBLED AND DELIVERED SET UP. FAILURE TO SECURELY ANCHOR BOOTH MAY RESULT IN OVERTURNING OF UNIT AND SERIOUS INJURY TO OCCUPANT.

- A. GLAZING- TINTED TEMPERED INSULATED SAFETY LAMINATED TO HURRICANE RATED GLASS SET IN PAINTED STEEL EXTERIOR WINDOW MULLIONS WITH REMOVABLE ANODIZED ALUMINUM INTERIOR WINDOW STOPS.
- A. PAINT- EXALT GLOSS IMRON POLYURETHANE FINISH DIRECTLY APPLIED.
- B. ELECTRICAL- ALL WIRING BY PAR-KUT TO BE #12(MIN) STRANDED COPPER, THHN ENCLOSED IN 1/2"(MIN) E.M.T. PER NATIONAL ELECTRIC CODE. FITTINGS, FIXTURES, AND DEVICES ARE U.L. LABELED. ALL WIRING TO TERMINATE AT C.B. PANEL. ALL CIRCUITS HAVE GREEN GROUND WIRE.
- C. BOOTH WILL HAVE A 6" CANOPY OVERHANG ON ALL SIDES.
- D. FOUR (4) REMOVABLE LIFTING RINGS ARE PROVIDED ON ROOF.
- E. NO ON SITE WORK BY PAR-KUT.
- F. DESIGN BASIS ONLY. UPDATE TO STATE & LOCAL CODES

FOUNDATION NOTES:

- a. SLOT IN FLOOR FOR ELECTRICAL SERVICE ENTRANCE TO C.B. PANEL.
- b. 3"Ø HOLE THROUGH FLOOR FOR WATER INLET. 2-REQ'D.
- c. 6"Ø HOLE THROUGH FLOOR FOR WATER CLOSET.
- d. VENT STACK: 6"Ø HOLE THROUGH FLOOR  
5"Ø HOLE THROUGH ROOF
- e. 3" X 3" X 3/8"(MIN) STEEL ANCHOR CLIP WITH A 1" ANCHOR BOLT HOLE, 4-REQ'D, ONE EACH CORNER. ANCHOR BOOTH AFTER FINAL LOCATION. ANCHOR BOLTS NOT INCLUDED.
- f. OUTER EDGE OF BOOTH.
- g. SUGGESTED MINIMUM FOUNDATION/SLAB.
- h. SLOT IN FLOOR FOR CUSTOMER USE.

GENERAL SITE INSTALLED ITEMS PROVIDED BY OTHERS

1. PROVIDE 120/240V, 1Ø-3 WIRE SERVICE WITH GROUND.
2. CONCRETE FOUNDATION/SLAB 10" THICK 4,000 PSI MINIMUM (28 DAY ACI 318) REINFORCED. REFER TO STRUCTURAL DRAWINGS.  
THE FOUNDATION/SLAB SHOULD BE MINIMUM OF 12" WIDER THAN THE ROOF LINE DIMENSIONS TO ALLOW A 6" CONCRETE BORDER ON EACH SIDE OF THE BUILDING ROOF LINE. USE #5Ø10" EACH WAY - TOP AND BOTTOM, PLACED OVER A 10-MIL VAPOR BARRIER.
3. ADEQUATE SIZE DRILLED ANCHOR BOLTS. SUGGESTED SIZE 5/8" X 4-1/2" POWER FASTENERS "POWER STUD" CATALOG #7432. CONTRACTOR SHALL SUBMIT SIGNED AND SEALED ANCHORAGE CALCULATIONS FOR STRUCTURAL ENGINEER TO REVIEW.

THIS DRAWING IS FOR REFERENCE PURPOSES ONLY.

OCCUPANCY REQUIREMENTS

GROUP "B"  
(FBC 304.1)

CONSTRUCTION TYPE AND SQUARE FOOT

SQUARE FEET 81 SQ. FT.  
(FBC TABLE 601) GROUP "B" OCCUPANCY: CONSTRUCTION TYPE V-B, UNPROTECTED, UNSPRINKLED

OCCUPANT LOAD

BUSINESS "B" (FBC TABLE 1004.1.1)  
(100 GROSS S.F. PER PERSON) 1 OCCUPANT TOTAL

AN ADA RESTROOM IS LOCATED APPROXIMATELY 400'-0" AWAY AT THE SOLIDS BUILDING FROM THE PROPOSED GUARDHOUSE LOCATION WHICH CAN BE ACCESSED BY THE GUARD; IN ANY EVENT THAT THE ABOVE REFERENCED MODEL/PLAN IS NOT SELECTED.

IF THIS BAR DOES NOT MEASURE 1" THEN DRAWING IS NOT TO FULL SCALE

NO.	DATE	REVISIONS AND RECORD OF ISSUE	NO.	BY	APP.
1	7/2015	BID ISSUE			
2					
3					
4					
5					
6					
7					
8					
9					
10					
11					
12					
13					
14					
15					

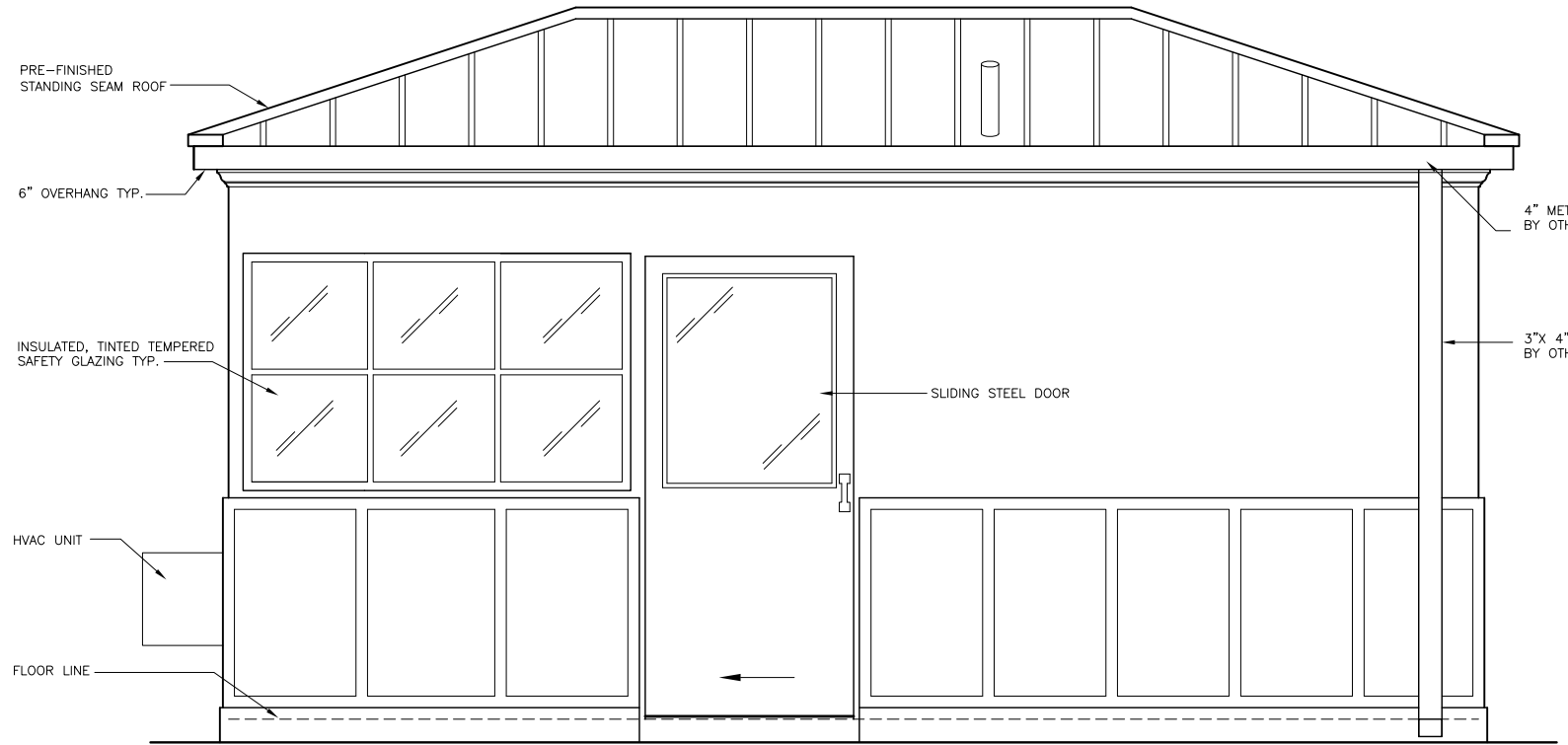
**BORRELLI PARTNERS**  
ARCHITECTURAL PARTNERS  
720 VASAR STREET, ORLANDO, FL 32804  
(407) 461-1118  
WWW.BORRELLIPARTNERS.COM

**BLACK & VEATCH**  
Building a world of difference.  
Black & Veatch Corporation  
201 South Orange Avenue, Suite 500  
Orlando, Florida 32801  
Certificate No. 8132

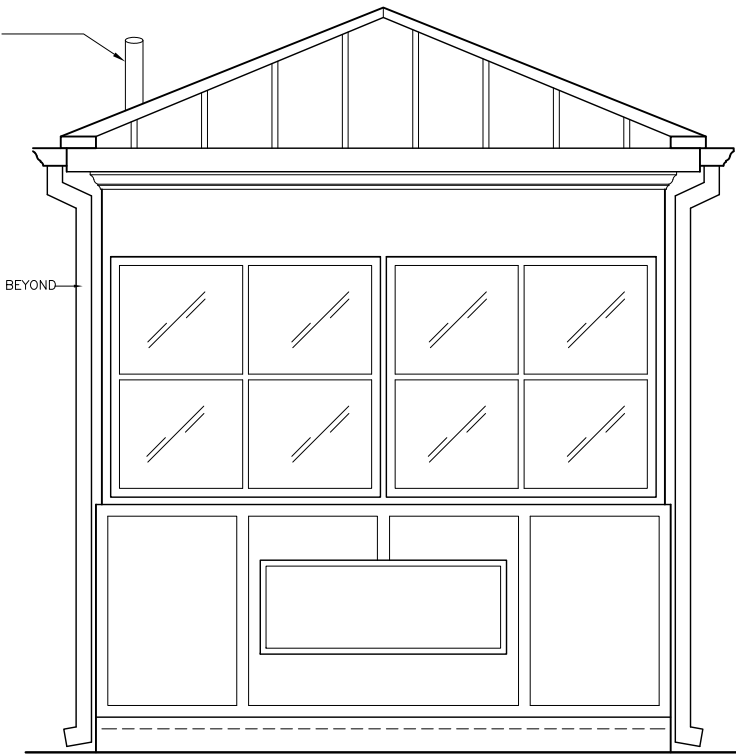
**ORANGE COUNTY UTILITIES**  
SOUTH WATER RECLAMATION FACILITY  
PHASE V IMPROVEMENTS  
ARCHITECTURAL  
GUARDHOUSE  
FLOOR PLAN AND BOLT LAYOUT PLAN

DESIGNED: J.L.M.
DETAILED: J.L.M.
CHECKED: J.L.M.
APPROVED: J.L.M.
DATE: JANUARY 2015
ARCHITECT OF RECORD: JAMES L. MOORE FLORIDA LICENSE NO.: AR95890

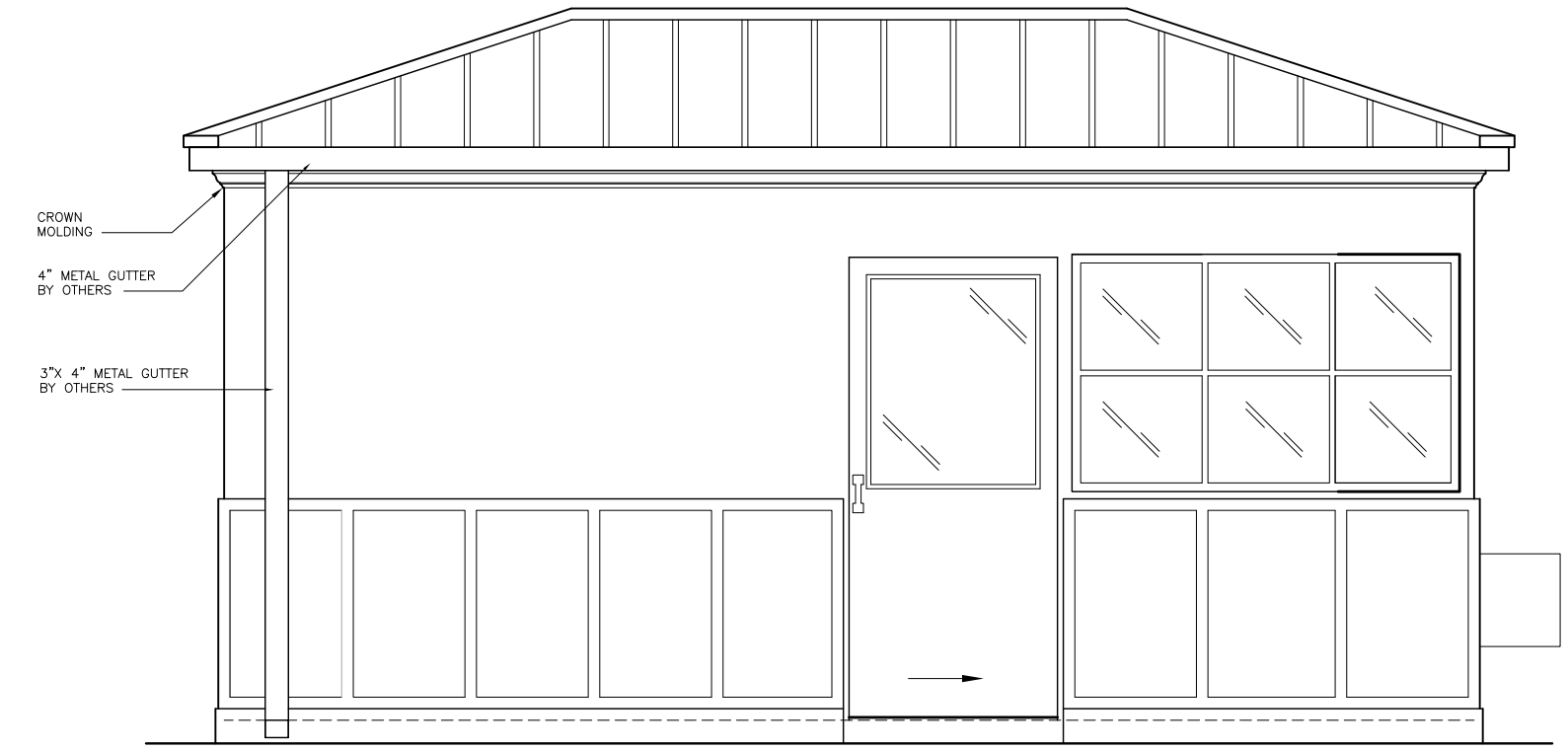
PROJECT NO.  
**180761**  
A-7  
SHEET  
107 OF 364



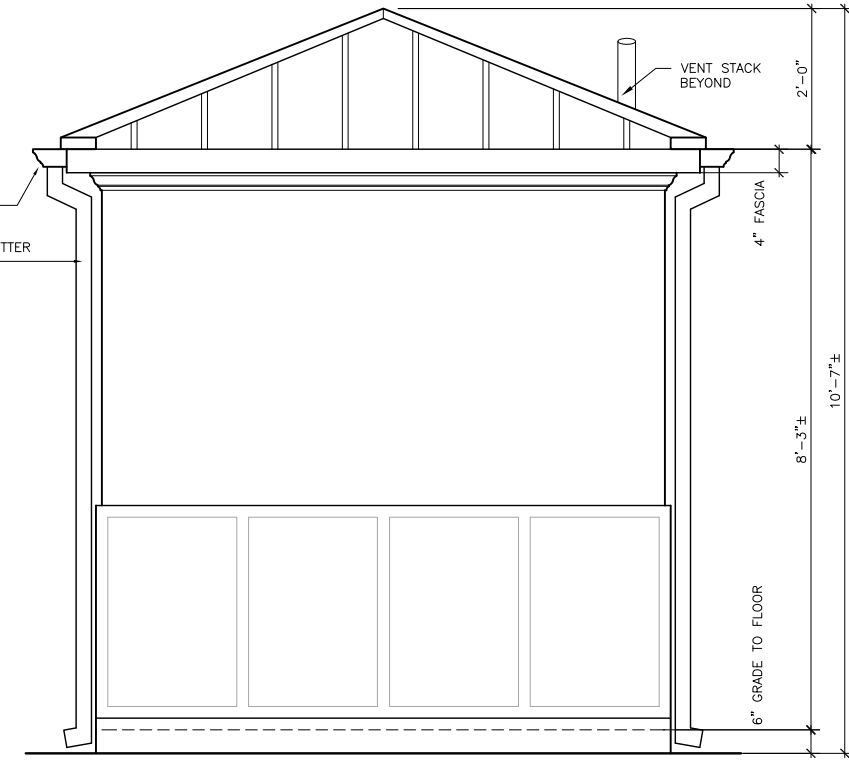
1 EXTERIOR ELEVATION - SOUTH  
A-B SCALE: 3/4" = 1'-0"



2 EXTERIOR ELEVATION - WEST  
A-B SCALE: 3/4" = 1'-0"



3 EXTERIOR ELEVATION - NORTH  
A-B SCALE: 3/4" = 1'-0"



4 EXTERIOR ELEVATION - EAST  
A-B SCALE: 3/4" = 1'-0"

THIS DRAWING IS FOR REFERENCE PURPOSES ONLY.

7/2015	BID ISSUE	REVISIONS AND RECORD OF ISSUE	IND. BY	CK/APP
	DATE	CYBNET ID: 50_3010		
	DATE	WF: A-8.dwg		
	DATE	SAVED: V:\NT16643_10\15\2013 2:24:04 PM		
	DATE	PLOTTED: V:\NT16643_9\11\2013 3:09:		
	DATE	USER: V:\NT16643		
	DATE	DWG VER: 1000		

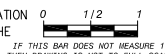
**BORRELLI PARTNERS**  
720 VASAR STREET ORLANDO, FL 32804  
(407) 461-1118

**BLACK & VEATCH**  
Building a world of difference.  
Black & Veatch Corporation  
201 South Orange Avenue, Suite 500  
Orlando, Florida 32801  
Certificate No. 8132

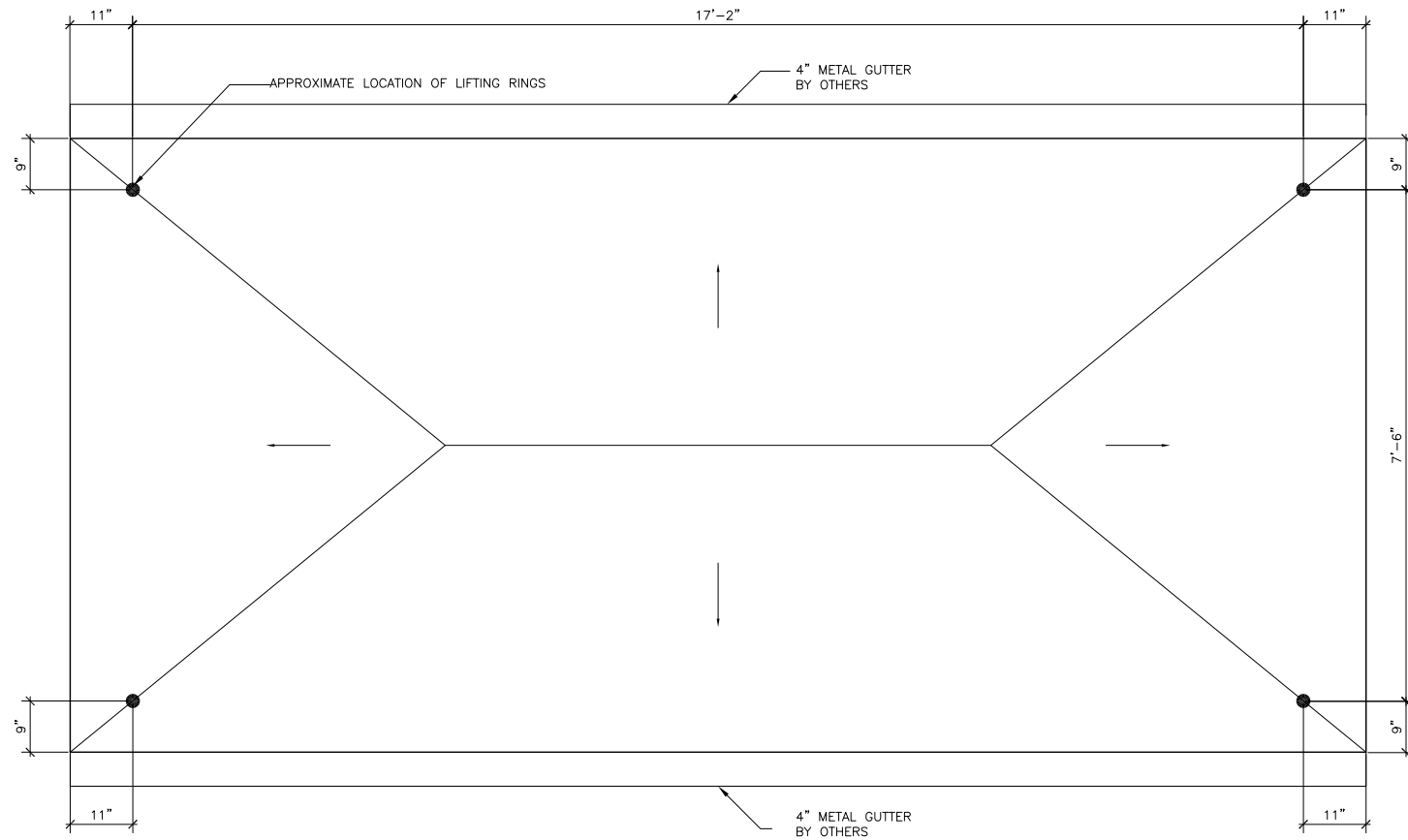
**ORANGE COUNTY UTILITIES**  
SOUTH WATER RECLAMATION FACILITY  
PHASE V IMPROVEMENTS  
ARCHITECTURAL  
GUARHOUSE  
EXTERIOR ELEVATIONS

DESIGNED:	J. L. M.
DETAILED:	J. L. M.
CHECKED:	J. L. M.
APPROVED:	J. L. M.
DATE:	JANUARY 2015
ARCHITECT OF RECORD:	JAMES L. MOORE
FLORIDA LICENSE NO.:	AR95890
PROJECT NO.	180761
<b>A-8</b>	<b>SHEET</b>
108	OF 364

AN ADA RESTROOM IS LOCATED APPROXIMATELY 400'-0" AWAY AT THE SOLIDS BUILDING FROM THE PROPOSED GUARHOUSE LOCATION WHICH CAN BE ACCESSED BY THE GUARD; IN ANY EVENT THAT THE ABOVE REFERENCED MODEL/PLAN IS NOT SELECTED.

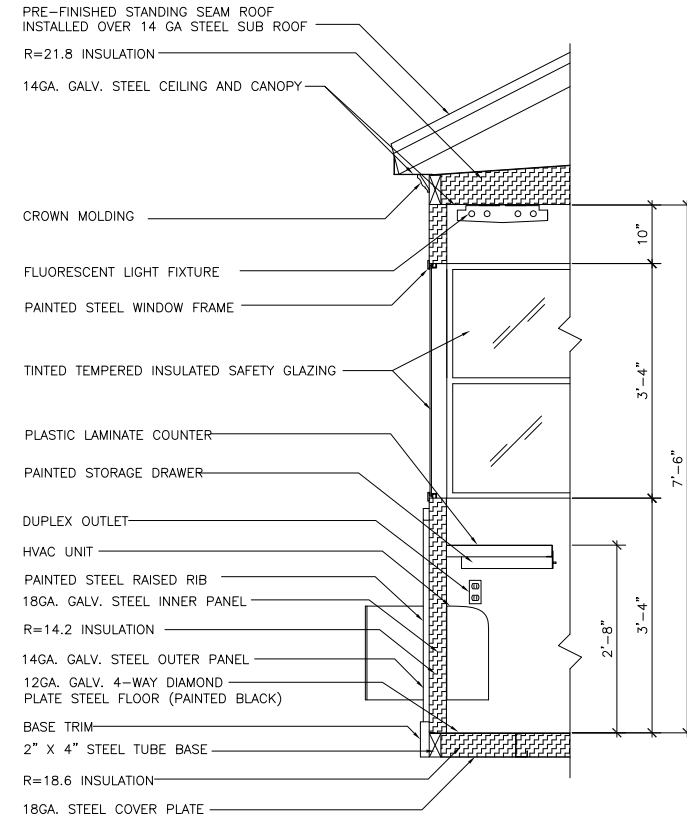




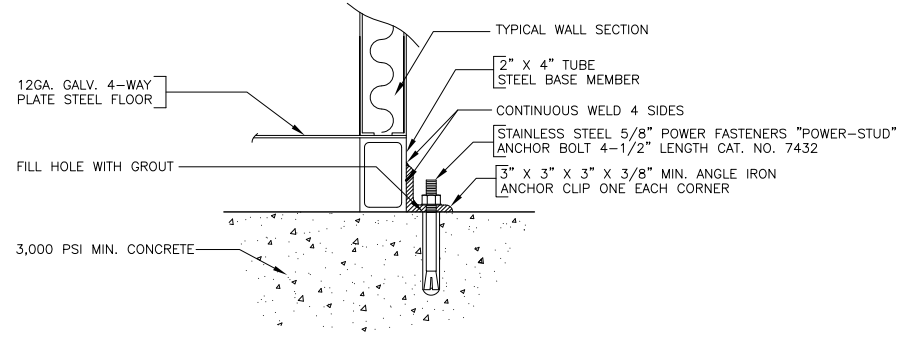


1 ROOF PLAN  
A-9 SCALE: 3/4" = 1'-0"

NOTE:  
REFER TO ELECTRICAL  
FOR LIGHTNING PROTECTION



2 WALL SECTION  
A-9 SCALE: 3/4" = 1'-0"



3 FIELD DRILLED ANCHOR BOLT DETAIL  
A-9

THIS DRAWING IS FOR REFERENCE PURPOSES ONLY. PAR-KUT BUILDINGS (BASIS OF DESIGN) MUST BE SECURELY ANCHORED IN PLACE, AND MUST BE PROPERLY GROUNDED. ADEQUATE SIZED ANCHOR BOLTS SHALL BE USED; THE SIZE AND DEPTH OF THE ANCHORS SHOULD BE OF SUFFICIENT DESIGN TO WITHSTAND THE HIGHEST RECORDED WIND SPEEDS IN THE AREA OF INSTALLATION. CONSULT A PROFESSIONAL ENGINEER FAMILIAR WITH THE WEATHER CONDITIONS IN THE AREA.

AN ADA RESTROOM IS LOCATED APPROXIMATELY 400'-0" AWAY AT THE SOLIDS BUILDING FROM THE PROPOSED GUARDHOUSE LOCATION WHICH CAN BE ACCESSED BY THE GUARD; IN ANY EVENT THAT THE ABOVE REFERENCED MODEL/PLAN IS NOT SELECTED.

0 1/2 1  
IF THIS BAR DOES NOT MEASURE 1" THEN DRAWING IS NOT TO FULL SCALE

NO.	DATE	REVISIONS AND RECORD OF ISSUE	NO.	BY	APP.
1	7/2015	BID ISSUE			CK
					APP

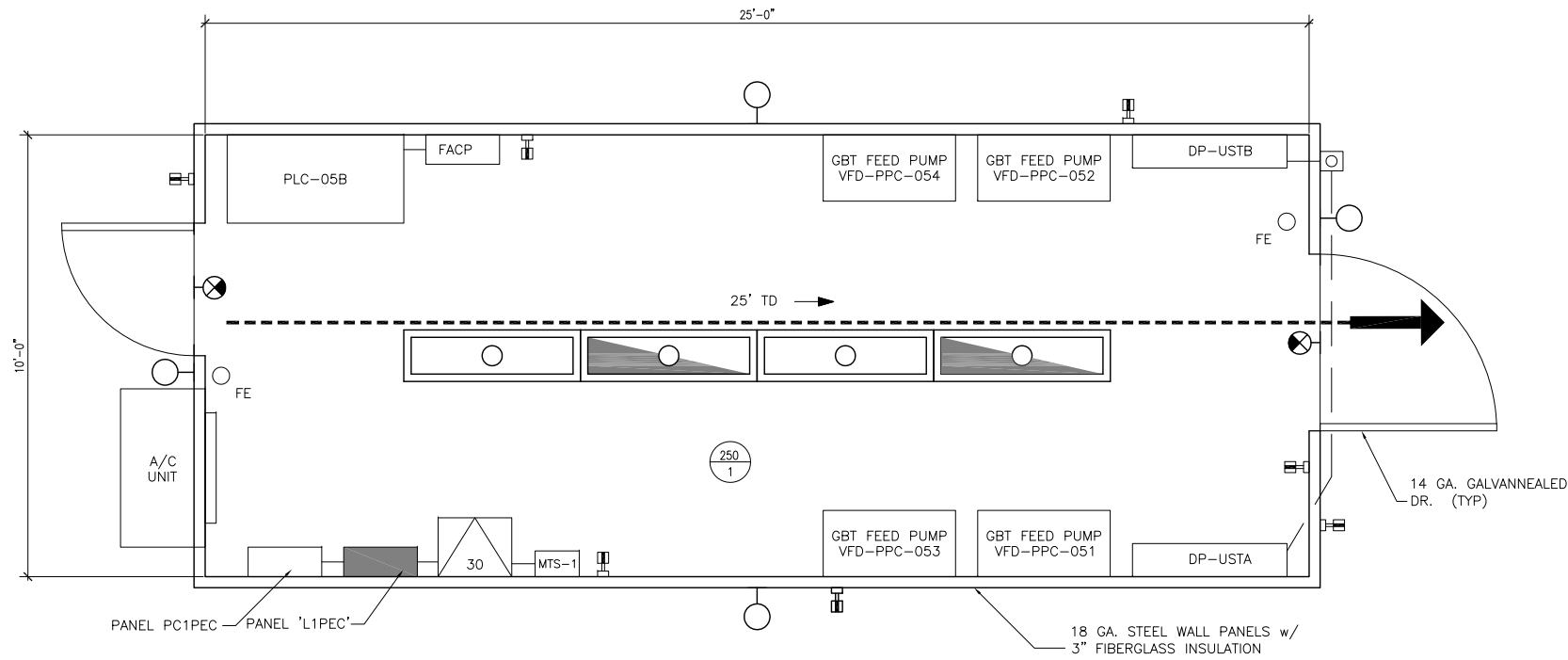
**BORRELLI PARTNERS**  
ARCHITECTURAL PARTNERS  
720 VASAR STREET ORLANDO, FL 32804  
(407) 461-1118  
WWW.BORRELLIPARTNERS.COM

**BLACK & VEATCH**  
Building a world of difference.  
Black & Veatch Corporation  
201 South Orange Avenue, Suite 500  
Orlando, Florida 32801  
Certificate No. 8132

ORANGE COUNTY UTILITIES  
SOUTH WATER RECLAMATION FACILITY  
PHASE V IMPROVEMENTS  
ARCHITECTURAL  
GUARDHOUSE  
ROOF PLAN AND WALL SECTION

DESIGNED:	J. L. M.
DETAILED:	J. L. M.
CHECKED:	J. L. M.
APPROVED:	J. L. M.
DATE:	JANUARY 2015
ARCHITECT OF RECORD:	JAMES L. MOORE
FLORIDA LICENSE NO.:	AR95890
PROJECT NO.	180761
SHEET	A-9
109 OF 364	





1 GBT POWER EQUIPMENT CENTER - (PEC-1) LIFE SAFETY PLAN (PEC-2 & PEC-3 SIM.)  
 SCALE: 1/2" = 1'-0"

**LIFE SAFETY LEGEND**

DESCRIPTION	
TRAVEL DISTANCE (TD)	---
PRIMARY EGRESS	→
WALL MOUNTED FIRE EXTINGUISHER	○ FE
EXIT LIGHT	⊗
EMERGENCY LIGHT	□

**GENERAL NOTES**

- ALL SIGNAGE SHALL BE INSTALLED IN ACCORDANCE WITH APPLICABLE CODES.
- SEE ELECTRICAL PLANS FOR FIRE ALARM/ STROBE LOCATIONS, SMOKE/HEAT DETECTOR LOCATIONS, AND FOR EMERGENCY LIGHT LOCATIONS.
- ALL SIGNAGE INCLUDING MAXIMUM OCCUPANCY, FIRE EXTINGUISHER INSIDE, EXIT DIAGRAMS, ETC. TO BE PER NFPA STANDARDS AND REQUIREMENTS.

**PROJECT CODE SUMMARY AND INFORMATION**

**CODES AND STANDARDS**

- A . BUILDING \_\_\_\_\_ FBC 2010 - BUILDING
- B . ACCESSIBILITY \_\_\_\_\_ FBC 2010 - ACCESSIBILITY
- C . FIRE \_\_\_\_\_ FLORIDA FIRE PREVENTION CODE 2010
- D . LIFE SAFETY \_\_\_\_\_ LIFE SAFETY CODE (NFPA 101) FLORIDA 2009
- E . MECHANICAL \_\_\_\_\_ FBC 2010 - MECHANICAL
- F . PLUMBING \_\_\_\_\_ FBC 2010 - PLUMBING
- G . ELECTRICAL \_\_\_\_\_ NATIONAL ELECTRIC CODE 2008

**AGENCIES HAVING JURISDICTION**

- A . AGENCY \_\_\_\_\_ ORANGE COUNTY BUILDING DEPARTMENT  
 ADMINISTRATION BUILDING, 1ST FLOOR  
 201 ROSALIND AVENUE  
 ORLANDO, FL 32801

**OCCUPANCY REQUIREMENTS**

GROUP "F" CLASSIFICATION: SPECIAL PURPOSE "F-3"  
 (FBC 306.4)

**CONSTRUCTION TYPE**

(FBC TABLE 601) GROUP "F-3" OCCUPANCY:  
 CONSTRUCTION TYPE V-B, UNPROTECTED, UNSPRINKLED

**OCCUPANT LOAD**

SPECIAL PURPOSE "F-3"  
 (300 GROSS S.F. PER PERSON/ELECTRICAL) \_\_\_\_\_ 1 OCCUPANT  
 TOTAL OCCUPANT LOAD \_\_\_\_\_ 1 OCCUPANT

THE FACILITY CONTAINS EQUIPMENT ONLY AND IS NOT OCCUPIED BY PERSONNEL EXCEPT WHEN MAINTENANCE IS REQUIRED.

**EGRESS CALCULATIONS**

SPECIAL PURPOSE "F-3"  
 1 OCCUPANT X .20" = 1"  
 1" OF EGRESS REQUIRED \_\_\_\_\_ 76" OF EGRESS PROVIDED  
 MINIMUM NUMBER OF EXITS: 1 ACTUAL: 2 PROVIDED  
 MAXIMUM TRAVEL DISTANCE: 200 FT. ACTUAL: 25'-0"  
 MAXIMUM DEAD END CORRIDOR: 20 FT. ACTUAL: N/A  
 MINIMUM CORRIDOR WIDTH: 44" ACTUAL: N/A

**SQUARE FOOTAGE CALCULATIONS**

TOTAL OVERALL GROSS ZFLOOR AREA ----- 268 GSF

**FLAME SPREAD**

THE INTERIOR FINISHES SHALL BE REQUIRED TO MEET A "CLASS C" FLAME SPREAD INDEX OF 76-200: SMOKE-DEVELOPED INDEX OF 0-450. REFERENCE FLORIDA BUILDING CODE 2010, PARAGRAPH 803.1, TABLE 803.9

NO.	DATE	DESCRIPTION	BY	CHK
1	7/2015	BID ISSUE		
2		REVISIONS AND RECORD OF ISSUE		
3		DATE		
4		CYBNET ID: 50_3010		
5		WF.A: T.ONG		
6		SAVED: VANT6643_10/15/2013 2:24:04 PM		
7		PLOTTED: VANT6643_9/11/2013 3:09:		
8		USER: VANT6643		
9		DWG VER: 1000		

**BOURRELL PARTNERS**  
 ARCHITECTURAL PARTNERS  
 720 VASAR STREET ORLANDO, FL 32804  
 (407) 461-1118  
 WWW.BOURRELLPARTNERS.COM

**BLACK & VEATCH**  
 Building a world of difference.  
 Black & Veatch Corporation  
 201 South Orange Avenue, Suite 500  
 Orlando, Florida 32801  
 Certificate No. 8132

**ORANGE COUNTY UTILITIES**  
**SOUTH WATER RECLAMATION FACILITY**  
**PHASE V IMPROVEMENTS**  
 ARCHITECTURAL  
 PEC-1 BUILDING  
 LIFE SAFETY PLAN  
 PEC-2 & PEC-3 SIMILAR

DESIGNED: J.L.M.  
 DETAILED: J.L.M.  
 CHECKED: J.L.M.  
 APPROVED: J.L.M.  
 DATE: APRIL 2015  
 ARCHITECT OF RECORD:  
 JAMES L. MOORE  
 FLORIDA LICENSE NO.:  
 AR95890  
 PROJECT NO.  
 180761  
**A-10-A**  
 SHEET  
 OF