

# ORANGE COUNTY CONVENTION CENTER

ORANGE COUNTY MAYOR  
TERESA JACOBS



DISTRICT 3 COMMISSIONER  
PETE CLARKE

DISTRICT 4 COMMISSIONER  
JENNIFER THOMPSON

DISTRICT 1 COMMISSIONER  
S. SCOTT BOYD

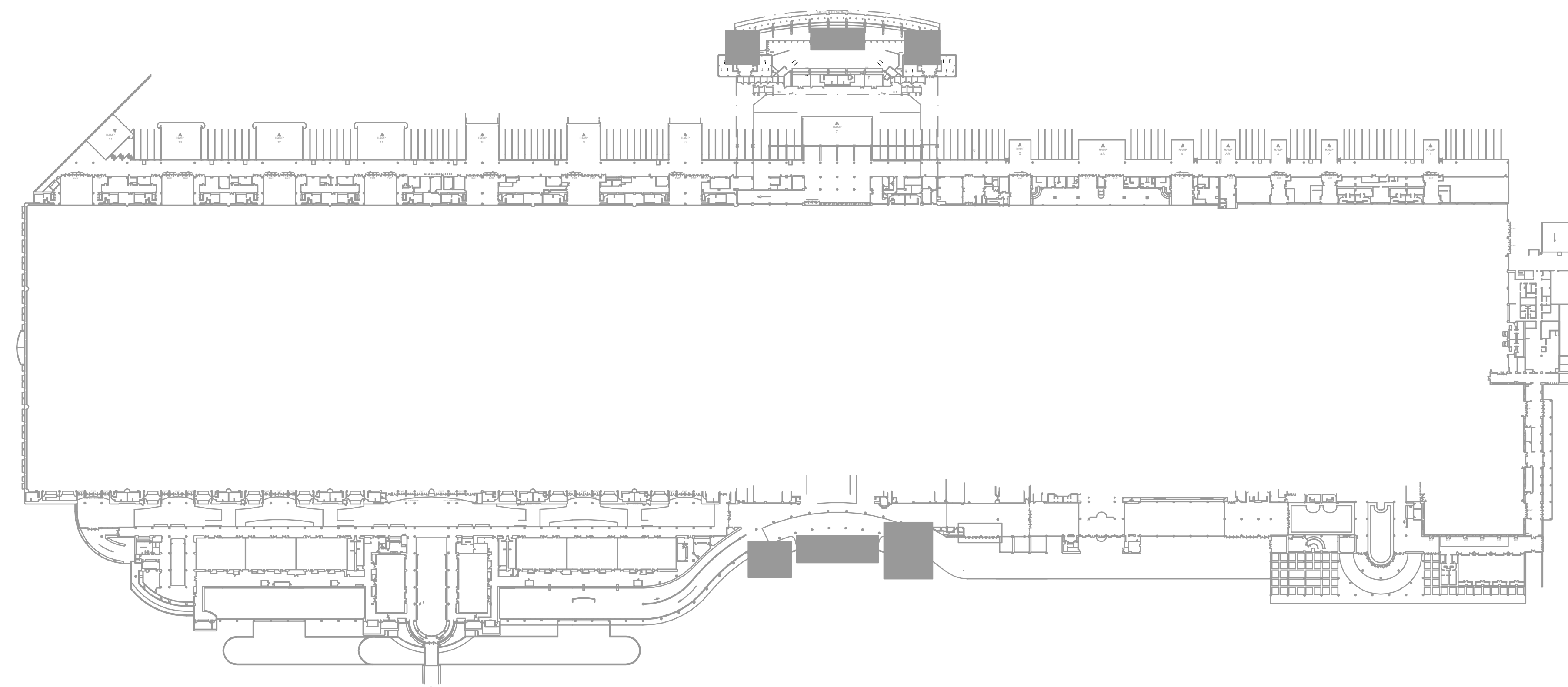
Orange  
County  
Convention  
Center

DISTRICT 5 COMMISSIONER  
TED EDWARDS

DISTRICT 2 COMMISSIONER  
FRED BRUMMER

DISTRICT 6 COMMISSIONER  
TIFFANY MOORE RUSSELL

## PHASE 1 HALL D CATWALK POWER



WEST BLDG

SHEET NO.	ELECTRICAL SHEET INDEX FOR	SCALE
E.0.01	GENERAL NOTES AND LEGENDS	NONE
E1.1.1	OVERALL PLAN ELECTRICAL	1" = 80'
E1.4.25	PARTIAL POWER PLAN AREA 25	1/8" = 1'-0"
E1.4.26	PARTIAL POWER PLAN AREA 26	1/8" = 1'-0"
E1.4.27	PARTIAL POWER PLAN AREA 27	1/8" = 1'-0"
E1.4.28	PARTIAL POWER PLAN AREA 28	1/8" = 1'-0"
E2.5.01	ELECTRICAL SCHEDULES	NTS
E2.5.02	ELECTRICAL SCHEDULES	NTS
E5.2.01	POWER RISER DIAGRAM	NTS

KEY PLAN  
N.T.S.

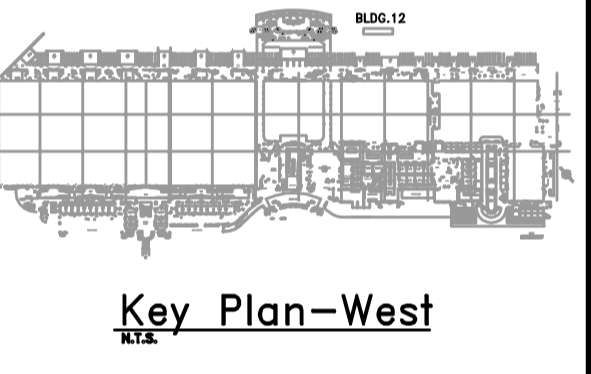
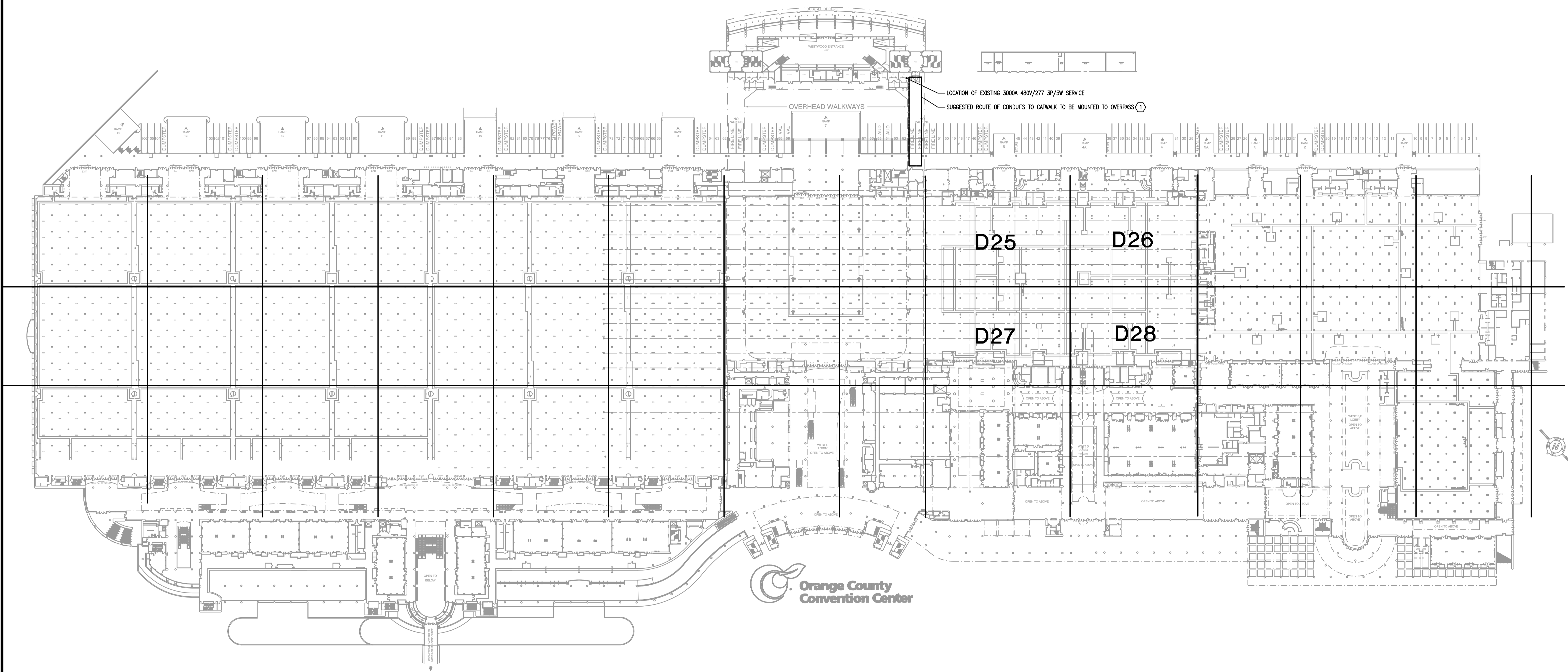
**mp**  
MATERN  
PROFESSIONAL  
ENGINEERING, INC.  
ENG. BUS. NO. EB-0005096  
CERT. OF AUTH. NO. 5096  
130 Candace Drive  
Maitland, FL 32751-3331  
PHONE (407) 740-5020  
FAX (407) 740-0365

BID DOCUMENTS  
FEBRUARY 28, 2014

LAST SAVED BY: RMDONG  
 LAST SAVED: 2/24/2014 12:27:17 PM  
 CREATING DATE: 2/20/13 9:46:42 AM  
 J:\2012\2013-186\_CCCC\West Building Phase 1\EP\Upgrade\2013-186\_CCCC\West Building Hall D Utility Show Power\2013-186\_C COVER.dwg  
 PLOT DATE: 2/26/2014 1:35:39 PM  
 MATERN PROFESSIONAL ENGINEERING



**OCCC PHASE 1  
 HALL D  
 CATWALK POWER**



**OVERALL PLAN - ELECTRICAL**  
 1"=80'-0"  
 0 40' 80' 160'

Revisions

No.	Date	Description

MPE PROJ#: 2012-188C

Designed By:	CT/RB
Drawn By:	AG/RB
Checked By:	CET
Issue Date:	FEBRUARY 28, 2014
Drawing Scale:	1"=80'-0"
Drawing Title:	

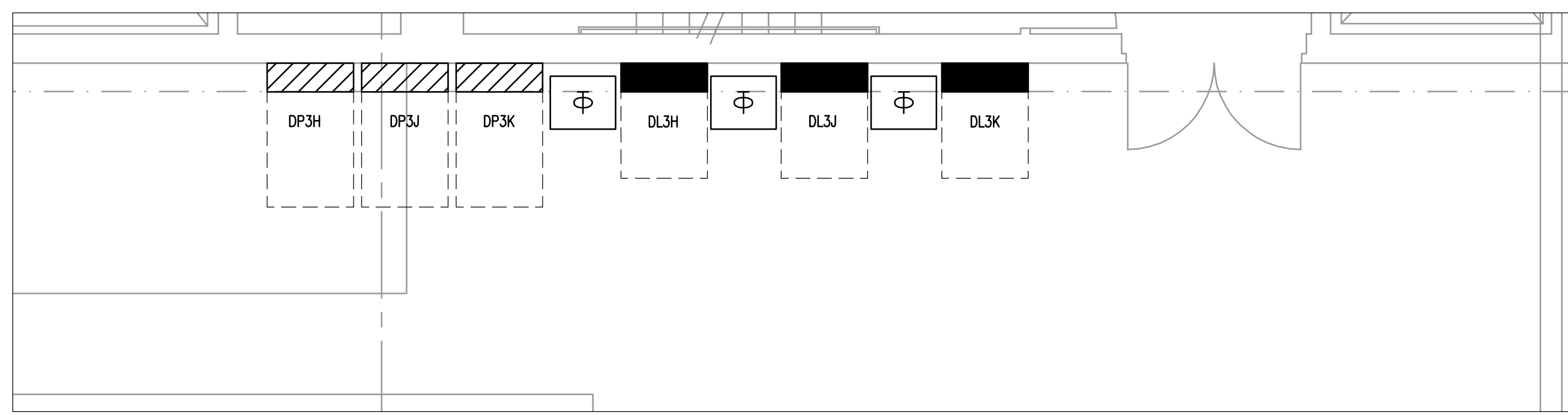
<b>OVERALL PLAN ELECTRICAL</b>
BID DOCUMENTS
Drawing No. <b>E1.1.1</b>

**GENERAL NOTES**  
 1) REFER TO GENERAL NOTES FOR THIS DISCIPLINE.  
 2) REFER TO SPECIFICATIONS.

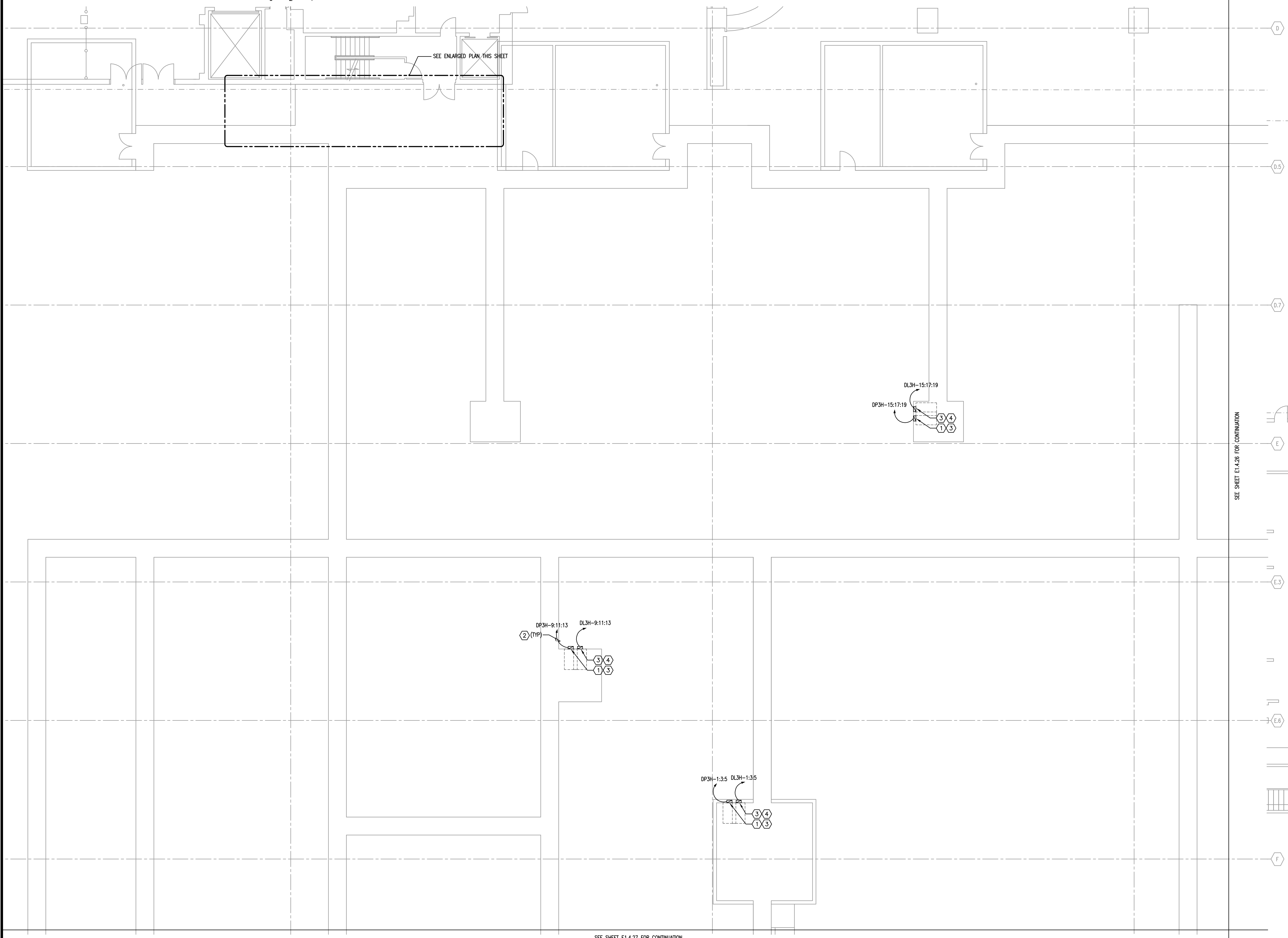
**HEX NOTES**  
 ① CONTRACTOR SHALL VERIFY CONDUIT ROUTING AND MAKE ADJUSTMENTS DUE TO FIELD CONDITIONS.

2/28/2014 10:58 AM C:\CDD\West Building Phase 1\MEP\Updates\2012-188C\_OCCC West Building Hall D Utility Show Power\2012-188C-E1.1.dwg  
 MPE PROFESSIONAL ENGINEERING PLOT DATE: 2/26/2014 11:12:34 PM  
 LAST SAVED BY: RANDONG  
 LAST SAVED: 10/20/2013 12:27:23 PM  
 CREATE DATE: 3/10/2013 5:53:11 AM

LAST SAVED BY: RBANDONG  
 LAST SAVED: 2/26/2014 12:58 PM  
 ORIENT DATE: 1/10/2014 9:58:24 AM  
 J:\2012\2012-188\_CCCC West Building Phase 1 MEP Upgrade\2012-188\_CCCC West Building\10 Utility Show Power\2012-188 E1.4.25.dwg  
 MATEM PROFESSIONAL ENGINEERING PLOT DATE: 2/26/2014 3:54:05 PM



**ENLARGED PLAN**  
 1/4" = 1'-0"  
 0 2' 4' 8'



SEE SHEET E1.4.27 FOR CONTINUATION

**PARTIAL POWER PLAN - AREA 25**  
 1/8" = 1'-0"  
 0 4' 8' 16'

**GENERAL NOTES**

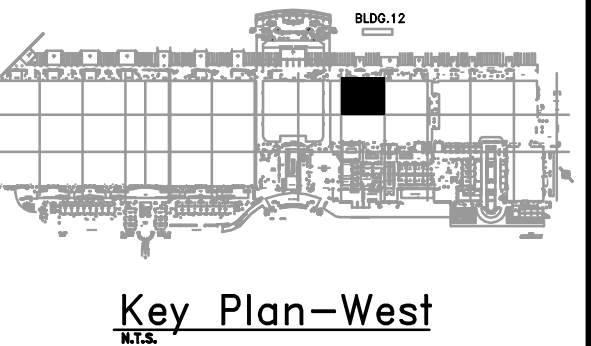
- 1) REFER TO GENERAL NOTES FOR THIS DISCIPLINE.
- 2) REFER TO SPECIFICATIONS.
- 3) NO MULTI-WIRE BRANCH CIRCUITS ARE TO BE USED. EACH CIRCUIT IS TO HAVE SEPARATE INDIVIDUAL NEUTRAL.
- 4) ALL HEX NOTES NOT NECESSARILY USED ON ALL SHEETS.
- 5) EXISTING CONDUIT ROUTING IS UNKNOWN.
- 6) WHERE CONDUIT ROUTING IS SHOWN, THE CONDUITS ARE SHOWN FOR DIAGRAMMATIC PURPOSES AND ARE NOT NECESSARILY REPRESENTATIVE OF EXACT PLACEMENT.
- 7) WHERE DISCONNECTS ARE SHOWN FEEDING VFD'S PROVIDE WITH ALL REQUIRED ELECTRICAL FOR INTERLOCK.

**HEX NOTES**

- ① NEW 480V, 3P, 400A HUBBELL DISCONNECT WITH PIN AND SLEEVE.
- ② REFER TO FEEDER SCHEDULE.
- ③ MOUNT NEW DISCONNECTS ON UNISTRUT RACK SO THAT THE PATH OF EGRESS IS NOT BLOCKED IN ANY WAY. SEE DETAIL.
- ④ NEW 208V, 3P, 100A HUBBELL DISCONNECT WITH PIN AND SLEEVE.

**mp MATERN PROFESSIONAL ENGINEERING**  
 ME/PE/FP Engineering Consultants - A Solutions Based Firm  
 ORLANDO | Fort Myers | Jacksonville | Tampa  
 Matern Professional Engineering, Inc  
 130 Candace Drive  
 Maitland, FL 32751-3331  
 PHONE (407) 740-5020 FAX (407) 740-0365  
 THIS DRAWING IS THE PROPERTY OF MATERN PROFESSIONAL ENGINEERING, INC. UNLESS OTHERWISE PROVIDED BY THE CONTRACT, THE CONTENTS OF THIS DRAWING SHALL NOT BE TRANSMITTED TO ANY OTHER PARTY EXCEPT AS AGREED TO BY THE ENGINEER.  
 ENG. BUS. No. EB-0000996 CERT. OF AUTH. No. 5096

**OCCC PHASE 1  
 HALL D  
 CATWALK POWER**



**Revisions**

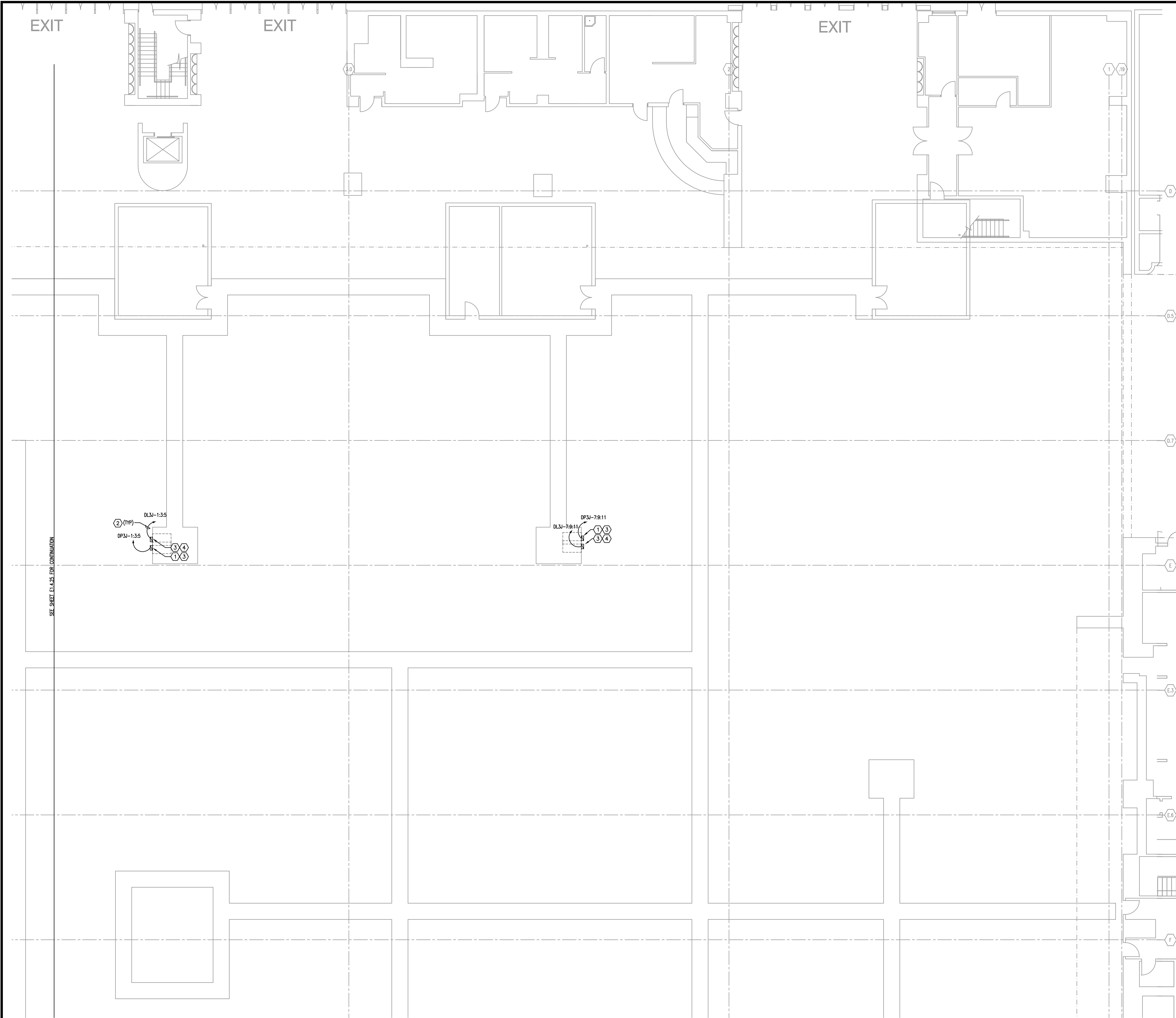
No.	Date	Description

MPE PROJ#: 2012-188C  
 Designed By: RB  
 Drawn By: AG/RB  
 Checked By: CT  
 Issue Date: FEBRUARY 28, 2014  
 Drawing Scale: 1/8"=1'-0"

Drawing Title:  
**PARTIAL POWER PLAN - AREA 25**

BID DOCUMENTS  
 Drawing No.  
**E1.4.25**

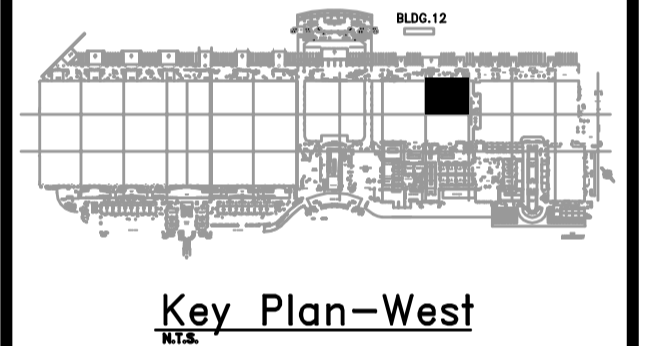
MATEM PROFESSIONAL ENGINEERING    PLOT DATE: 2/26/2014 3:12:12 PM    J:\2012\2012-188-CCCC\West Building Phase MEP Upgrade\2012-188-CCCC\West Building Hall D Utility Show Power\2012-188-E1.4.26.dwg    2/26/2012 10:58:00 AM    C:\CCTV\West Building Phase MEP Upgrade\2012-188-CCCC\West Building Hall D Utility Show Power\2012-188-E1.4.26.dwg    11/20/2012 9:22:24 AM    LAST SAVED BY: RABONDING    2/26/2014 3:14:42 PM    LAST SAVED BY: RABONDING



- GENERAL NOTES**
- 1) REFER TO GENERAL NOTES FOR THIS DISCIPLINE.
  - 2) REFER TO SPECIFICATIONS.
  - 3) NO MULTI-WIRE BRANCH CIRCUITS ARE TO BE USED. EACH CIRCUIT IS TO HAVE SEPARATE INDIVIDUAL NEUTRAL.
  - 4) ALL HEX NOTES NOT NECESSARILY USED ON ALL SHEETS.
  - 5) EXISTING CONDUIT ROUTING IS UNKNOWN.
  - 6) WHERE CONDUIT ROUTING IS SHOWN, THE CONDUITS ARE SHOWN FOR DIAGRAMMATIC PURPOSES AND ARE NOT NECESSARILY REPRESENTATIVE OF EXACT PLACEMENT.
  - 7) WHERE DISCONNECTS ARE SHOWN FEEDING VFD'S PROVIDE WITH ALL REQUIRED ELECTRICAL FOR INTERLOCK.

**mp MATERN PROFESSIONAL ENGINEERING**  
 MEPEPP Engineering Consultants - A Solutions Based Firm  
 ORLANDO | Fort Myers | Jacksonville | Tampa  
 Matern Professional Engineering, Inc  
 130 Candace Drive  
 Maitland, FL 32751-3331  
 PHONE (407) 740-5020 FAX (407) 740-0365  
THIS DRAWING IS THE PROPERTY OF MATERN PROFESSIONAL ENGINEERING, INC. UNLESS OTHERWISE PROVIDED BY THE CONTRACT, THE CONTENTS OF THIS DRAWING SHALL NOT BE TRANSMITTED TO ANY OTHER PARTY EXCEPT AS AGREED TO BY THE ENGINEER.  
 ENG. BUS. No. EB-0000996 CERT. OF AUTH. No. 5098

**OCCC PHASE 1  
 HALL D  
 CATWALK POWER**



**Revisions**

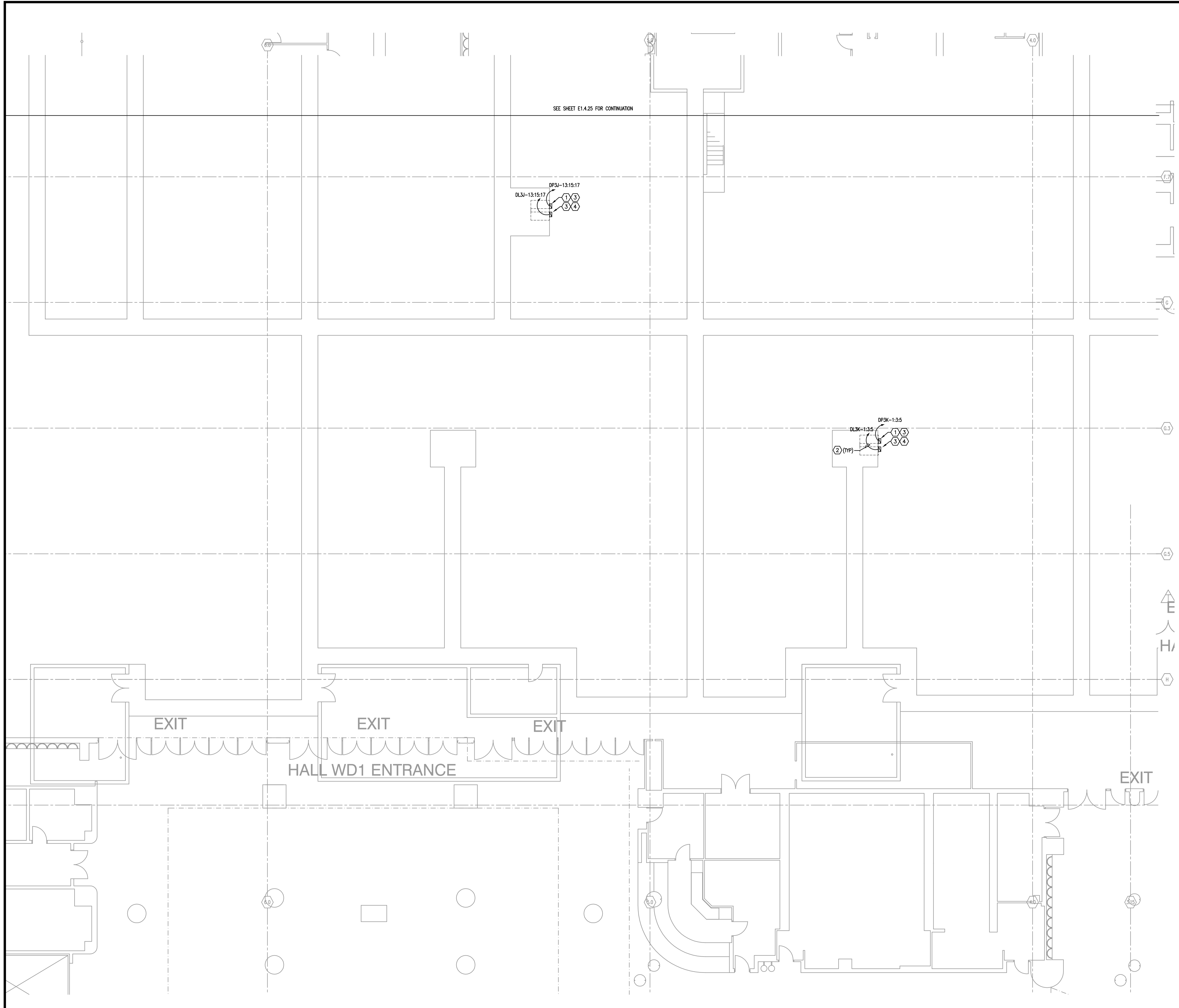
No.	Date	Description

- HEX NOTES**
- ① NEW 480V, 3P, 400A HUBBELL DISCONNECT WITH PIN AND SLEEVE.
  - ② REFER TO FEEDER SCHEDULE.
  - ③ MOUNT NEW DISCONNECTS ON UNISTRUT RACK SO THAT THE PATH OF EGRESS IS NOT BLOCKED IN ANY WAY. SEE DETAIL.
  - ④ NEW 208V, 3P, 100A HUBBELL DISCONNECT WITH PIN AND SLEEVE.

**PARTIAL POWER PLAN - AREA 26**  
 1/8"=1'-0"

MPE PROJ#: 2012-188C  
 Designed By: RB  
 Drawn By: AG/RB  
 Checked By: CT  
 Issue Date: FEBRUARY 28, 2014  
 Drawing Scale: 1/8"=1'-0"  
 Drawing Title:  
**PARTIAL POWER PLAN - AREA 26**  
 BID DOCUMENTS  
 Drawing No.  
**E1.4.26**

LAST SAVED BY: RABONDG  
LAST SAVED: 2/26/2014 3:42:27 PM  
CREATE DATE: 11/20/2013 11:08 AM  
LAST SAVED BY: MPE  
LAST SAVED: 2/26/2014 3:42:27 PM  
CREATE DATE: 11/20/2013 11:08 AM  
LAST SAVED BY: MPE  
LAST SAVED: 2/26/2014 3:42:27 PM  
CREATE DATE: 11/20/2013 11:08 AM  
LAST SAVED BY: MPE  
LAST SAVED: 2/26/2014 3:42:27 PM  
CREATE DATE: 11/20/2013 11:08 AM



SEE SHEET E1.4.25 FOR CONTINUATION

DPSI-13.15:17  
DL3J-13.15:17

DP3K-1.3:5  
DL3K-1.3:5

EXIT

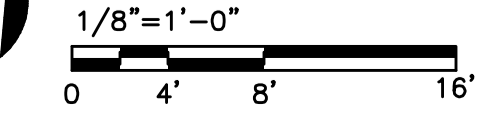
EXIT

EXIT

HALL WD1 ENTRANCE

EXIT

### PARTIAL POWER PLAN - AREA 27

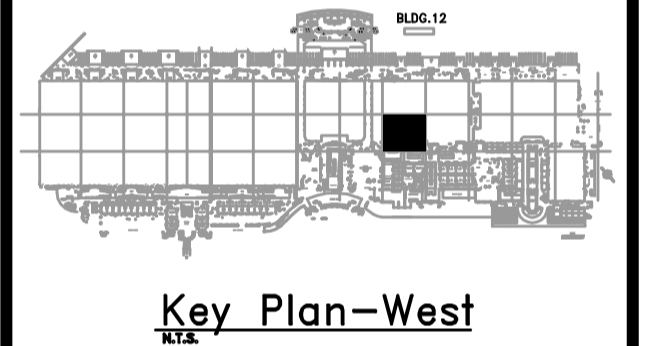


#### GENERAL NOTES

- 1) REFER TO GENERAL NOTES FOR THIS DISCIPLINE.
- 2) REFER TO SPECIFICATIONS.
- 3) NO MULTI-WIRE BRANCH CIRCUITS ARE TO BE USED. EACH CIRCUIT IS TO HAVE SEPARATE INDIVIDUAL NEUTRAL.
- 4) ALL HEX NOTES NOT NECESSARILY USED ON ALL SHEETS.
- 5) EXISTING CONDUIT ROUTING IS UNKNOWN.
- 6) WHERE CONDUIT ROUTING IS SHOWN, THE CONDUITS ARE SHOWN FOR DIAGRAMMATIC PURPOSES AND ARE NOT NECESSARILY REPRESENTATIVE OF EXACT PLACEMENT.
- 7) WHERE DISCONNECTS ARE SHOWN FEEDING VED'S PROVIDE WITH ALL REQUIRED ELECTRICAL FOR INTERLOCK.

**mp MATERN PROFESSIONAL ENGINEERING**  
MEPEP Engineering Consultants - A Solutions Based Firm  
ORLANDO | Fort Myers | Jacksonville | Tampa  
Matern Professional Engineering, Inc  
130 Candace Drive  
Maitland, FL 32751-3331  
PHONE (407) 740-5020 FAX (407) 740-0365  
THIS DRAWING IS THE PROPERTY OF MATERN PROFESSIONAL ENGINEERING, INC. UNLESS OTHERWISE PROVIDED BY THE CONTRACT, THE CONTENTS OF THIS DRAWING SHALL NOT BE TRANSMITTED TO ANY OTHER PARTY EXCEPT AS AGREED TO BY THE ENGINEER.  
ENG. BUS. No. EB-0000996 CERT. OF AUTH. No. 5098

## OCCC PHASE 1 HALL D CATWALK POWER



#### Revisions

No.	Date	Description

#### HEX NOTES

- 1) NEW 480V, 3P, 400A HUBBELL DISCONNECT WITH PIN AND SLEEVE.
- 2) REFER TO FEEDER SCHEDULE.
- 3) MOUNT NEW DISCONNECTS ON UNISTRUT RACK SO THAT THE PATH OF EGRESS IS NOT BLOCKED IN ANY WAY. SEE DETAIL.
- 4) NEW 208V, 3P, 100A HUBBELL DISCONNECT WITH PIN AND SLEEVE.

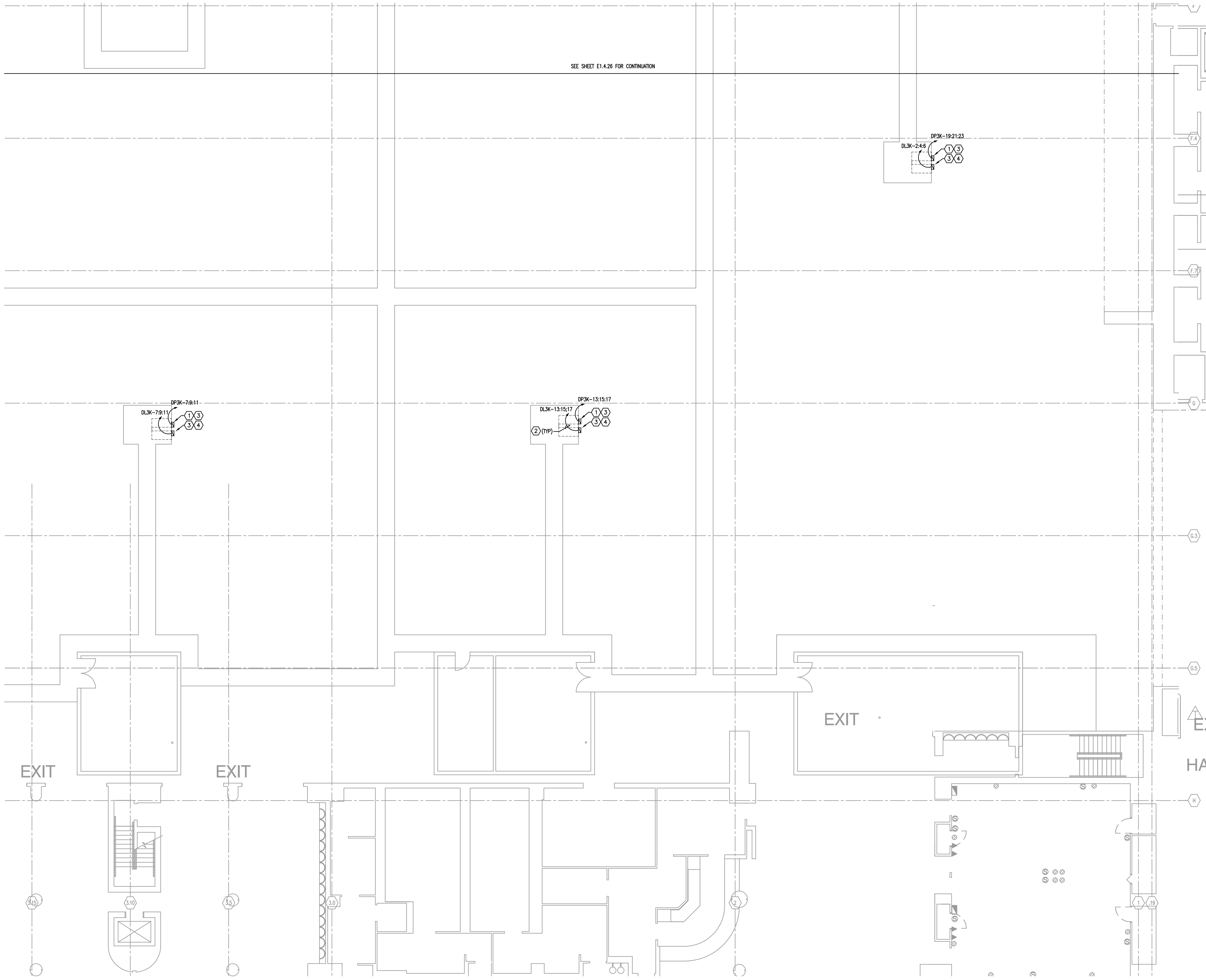
MPE PROJ#: 2012-188C  
Designed By: RB  
Drawn By: AG/RB  
Checked By: CT  
Issue Date: FEBRUARY 28, 2014  
Drawing Scale: 1/8"=1'-0"

Drawing Title:  
**PARTIAL POWER PLAN - AREA 27**

BID DOCUMENTS  
Drawing No.

# E1.4.27

MATEM PROFESSIONAL ENGINEERING  
 PLOT DATE: 2/26/2014 3:10:00 PM  
 1/20/2015 10:58:00 AM  
 MPE Upgrade Phase 1B - OCC West Building Hall D Utility Show Power 2015.188C E1.4.28.dwg  
 2/26/2014 3:10:00 PM  
 MATEM PROFESSIONAL ENGINEERING  
 PLOT DATE: 2/26/2014 3:10:00 PM  
 1/20/2015 10:58:00 AM  
 MPE Upgrade Phase 1B - OCC West Building Hall D Utility Show Power 2015.188C E1.4.28.dwg  
 2/26/2014 3:10:00 PM  
 MATEM PROFESSIONAL ENGINEERING  
 PLOT DATE: 2/26/2014 3:10:00 PM  
 1/20/2015 10:58:00 AM  
 MPE Upgrade Phase 1B - OCC West Building Hall D Utility Show Power 2015.188C E1.4.28.dwg  
 2/26/2014 3:10:00 PM

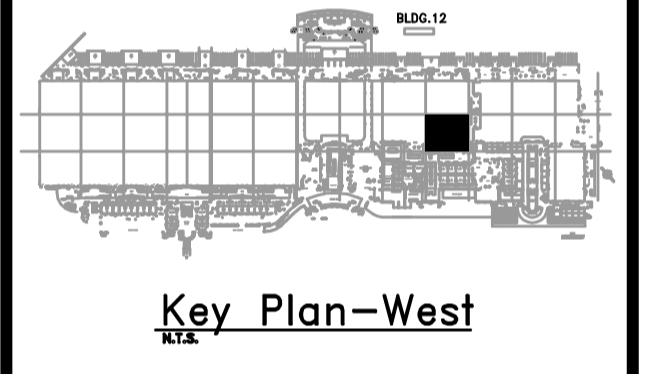


SEE SHEET E1.4.26 FOR CONTINUATION

- GENERAL NOTES**
- 1) REFER TO GENERAL NOTES FOR THIS DISCIPLINE.
  - 2) REFER TO SPECIFICATIONS.
  - 3) NO MULTI-WIRE BRANCH CIRCUITS ARE TO BE USED. EACH CIRCUIT IS TO HAVE SEPARATE INDIVIDUAL NEUTRAL.
  - 4) ALL HEX NOTES NOT NECESSARILY USED ON ALL SHEETS.
  - 5) EXISTING CONDUIT ROUTING IS UNKNOWN.
  - 6) WHERE CONDUIT ROUTING IS SHOWN, THE CONDUITS ARE SHOWN FOR DIAGRAMMATIC PURPOSES AND ARE NOT NECESSARILY REPRESENTATIVE OF EXACT PLACEMENT.
  - 7) WHERE DISCONNECTS ARE SHOWN FEEDING VFD'S PROVIDE WITH ALL REQUIRED ELECTRICAL FOR INTERLOCK.

**mp MATERN PROFESSIONAL ENGINEERING**  
 MEP/FP Engineering Consultants - A Solutions Based Firm  
 ORLANDO | Fort Myers | Jacksonville | Tampa  
 Matern Professional Engineering, Inc  
 130 Candace Drive  
 Maitland, FL 32751-3331  
 PHONE (407) 740-5020 FAX (407) 740-0365  
THIS DRAWING IS THE PROPERTY OF MATERN PROFESSIONAL ENGINEERING, INC. UNLESS OTHERWISE PROVIDED BY THE CONTRACT, THE CONTENTS OF THIS DRAWING SHALL NOT BE TRANSMITTED TO ANY OTHER PARTY EXCEPT AS AGREED TO BY THE ENGINEER.  
 ENG. BUS. No. EB-0000996 CERT. OF AUTH. No. 5098

**OCCC PHASE 1  
 HALL D  
 CATWALK POWER**



**Revisions**

No.	Date	Description

- HEX NOTES**
- ① NEW 480V, 3P, 400A HUBBELL DISCONNECT WITH PIN AND SLEEVE.
  - ② REFER TO FEEDER SCHEDULE.
  - ③ MOUNT NEW DISCONNECTS ON UNISTRUT RACK SO THAT THE PATH OF EGRESS IS NOT BLOCKED IN ANY WAY. SEE DETAIL.
  - ④ NEW 208V, 3P, 100A HUBBELL DISCONNECT WITH PIN AND SLEEVE.

**PARTIAL POWER PLAN - AREA 28**  
 1/8"=1'-0"  
 0 4' 8' 16'

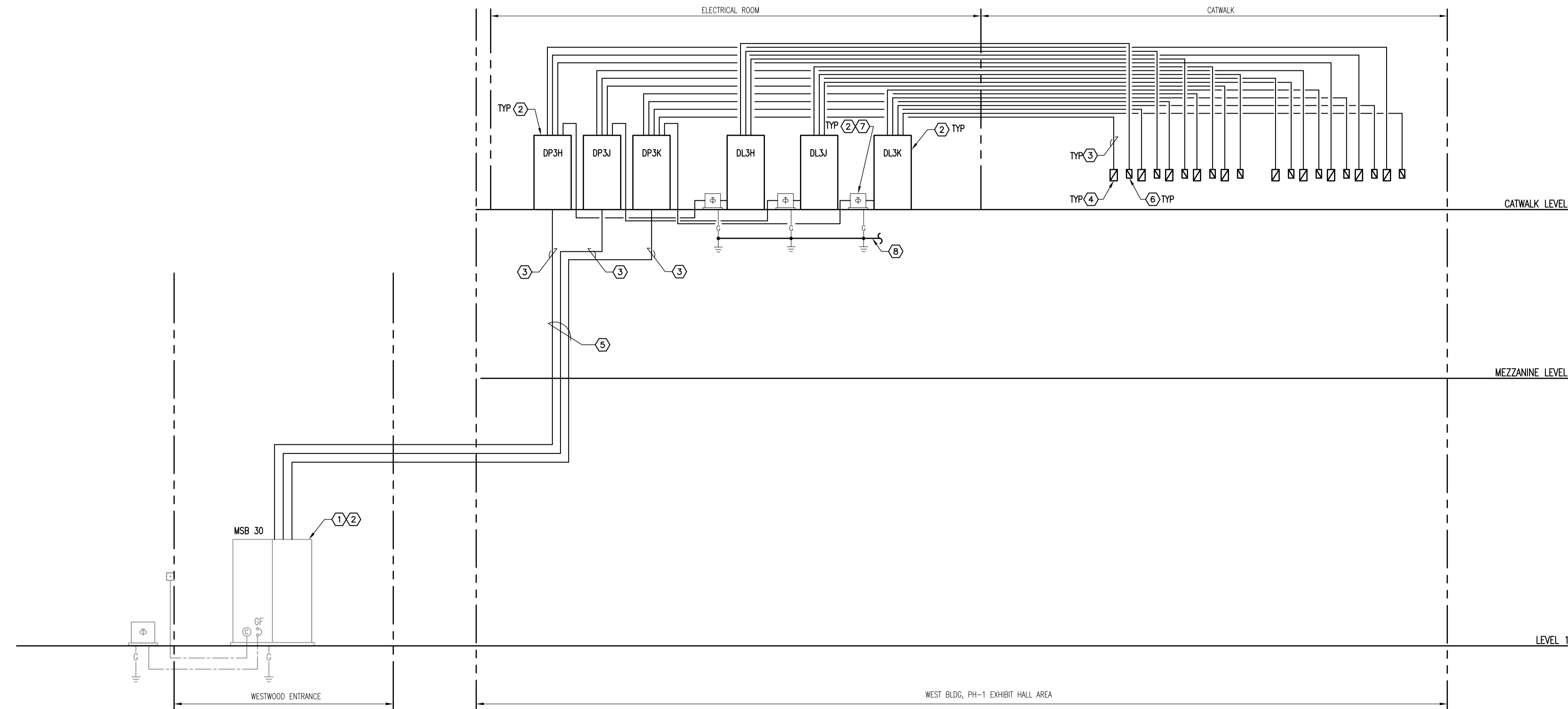
MPE PROJ#: 2012-188C  
 Designed By: RB  
 Drawn By: AG/RB  
 Checked By: CT  
 Issue Date: FEBRUARY 28, 2014  
 Drawing Scale: 1/8"=1'-0"  
 Drawing Title:  
**PARTIAL POWER PLAN - AREA 28**  
 BID DOCUMENTS  
 Drawing No.  
**E1.4.28**







MTERN PROFESSIONAL ENGINEERING  
 PLOT DATE: 2/26/2014 11:53 AM  
 2/26/2014 11:53 AM  
 WEST BLDG, PH-1 EXHIBIT HALL AREA  
 WESTWOOD ENTRANCE  
 MPE Upgrade 2012-188C\_CCCC West Building Hall Utility Show Power 2012-188C-E5.2.01.dwg  
 1/19/2012 10:52 AM  
 01/20/13 10:21 PM  
 RANONG  
 LAST SAVED BY:



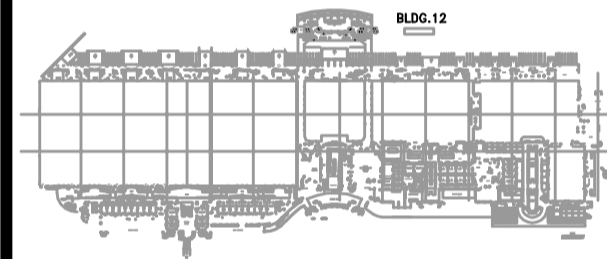
**POWER RISER DIAGRAM**  
NOT TO SCALE

**GENERAL NOTES**

- 1) REFER TO GENERAL NOTES FOR THIS DISCIPLINE.
- 2) REFER TO SPECIFICATIONS.
- 3) NO MULTI-WIRE BRANCH CIRCUITS ARE TO BE USED. EACH CIRCUIT IS TO HAVE SEPARATE INDIVIDUAL NEUTRAL.
- 4) REWORK/RELOCATE EXISTING ELECTRICAL AS REQUIRED TO FACILITATE REMODELING.
- 5) CONTRACTOR SHALL MAINTAIN CONTINUITY TO EXISTING DEVICES REMAINING.
- 6) ALL DISCONNECTING MEANS (SWITCHES) FEEDING FAN TERMINAL BOXES SHALL BE MOTOR RATED SWITCHES.

**mp** MATERN PROFESSIONAL ENGINEERING  
 ME/PE/EE Engineering Consultants - A Solutions Based Firm  
 ORLANDO | Fort Myers | Jacksonville | Tampa  
 Matern Professional Engineering, Inc  
 130 Candace Drive  
 Maitland, FL 32751-3331  
 PHONE (407) 740-5020 FAX (407) 740-0365  
THIS DRAWING IS THE PROPERTY OF MATERN PROFESSIONAL ENGINEERING, INC. UNLESS OTHERWISE PROVIDED BY THE CONTRACT, THE CONTENTS OF THIS DRAWING SHALL NOT BE TRANSMITTED TO ANY OTHER PARTY EXCEPT AS AGREED TO BY THE ENGINEER.  
 ENG. BUS. No. EB-0000996 CERT. OF AUTH. No. 5098

**OCCC PHASE 1  
HALL D  
CATWALK POWER**



Key Plan - West

**Revisions**

No.	Date	Description

**HEX NOTES**

- ① EXISTING 3000A SWITCHGEAR
- ② REFER TO PANEL SCHEDULES
- ③ REFER TO FEEDER SCHEDULES
- ④ NEW 480V, 3P, 400A HUBBELL DISCONNECT WITH PIN AND SLEEVE.
- ⑤ ROUTE CONDUIT AS REQUIRED. PROVIDE PULL BOXES AS REQUIRED. CONTRACTOR TO FIELD LOCATE ROUTING TO FACILITATE INSTALLATION.
- ⑥ NEW 208V, 3P, 100A DISCONNECT WITH PIN AND SLEEVE
- ⑦ STEP DOWN TRANSFORMER 480V, 3P PRIMARY, 208/120V 3P 4W SECONDARY. SEE RESPECTIVE PANEL SCHEDULE FOR SIZE. PROVIDE WITH 4" HOUSEKEEPING PAD.
- ⑧ NEW GROUNDING ELECTRODE CONDUCTOR. SIZE PER NEC. CONNECT TO NEAREST GROUND.

MPE PROJ#: 2012-188C

Designed By:	RB
Drawn By:	AG/RB
Checked By:	CT
Issue Date:	FEBRUARY 28, 2014
Drawing Scale:	NTS

Drawing Title:  
**POWER RISER  
DIAGRAM**

BID DOCUMENTS  
Drawing No.

**E5.2.01**