

ORANGE COUNTY MASTER PUMP STATION WALL PROJECT

PS #3190 - ORANGE AVENUE

PUMP STATION IMPROVEMENTS

BOARD OF COUNTY COMMISSIONERS

TERESA JACOBS
ORANGE COUNTY MAYOR

S. SCOTT BOYD
DISTRICT 1

JENNIFER THOMPSON
DISTRICT 4

FRED BRUMMER
DISTRICT 2

TED EDWARDS
DISTRICT 5

PETE CLARKE
DISTRICT 3

TIFFANY MOORE RUSSELL
DISTRICT 6



AJIT LALCHANDANI
COUNTY ADMINISTRATOR

RAYMOND E. HANSON, P.E.
DIRECTOR ORANGE COUNTY UTILITIES DEPARTMENT

ISSUED FOR BID



REISS ENGINEERING, INC.
CONSULTING ENGINEERS

1016 SPRING VILLAS PT.
WINTER SPRINGS, FLORIDA 32708
TEL: (407) 679-5358
FAX: (407) 679-5003

OCU FILE NO. : 75705
CAP NO. : 1503-99

ORANGE COUNTY UTILITIES DEPARTMENT
ENGINEERING DIVISION
ORANGE COUNTY, FLORIDA

JUNE 2014

ATTENTION IS DIRECTED TO THE FACT THAT THESE PLANS MAY HAVE BEEN REDUCED IN SIZE BY REPRODUCTION. THIS MUST BE CONSIDERED WHEN OBTAINING SCALED DATA. DIMENSION INFORMATION SHOULD NOT BE OBTAINED BY SCALING THE PLANS.

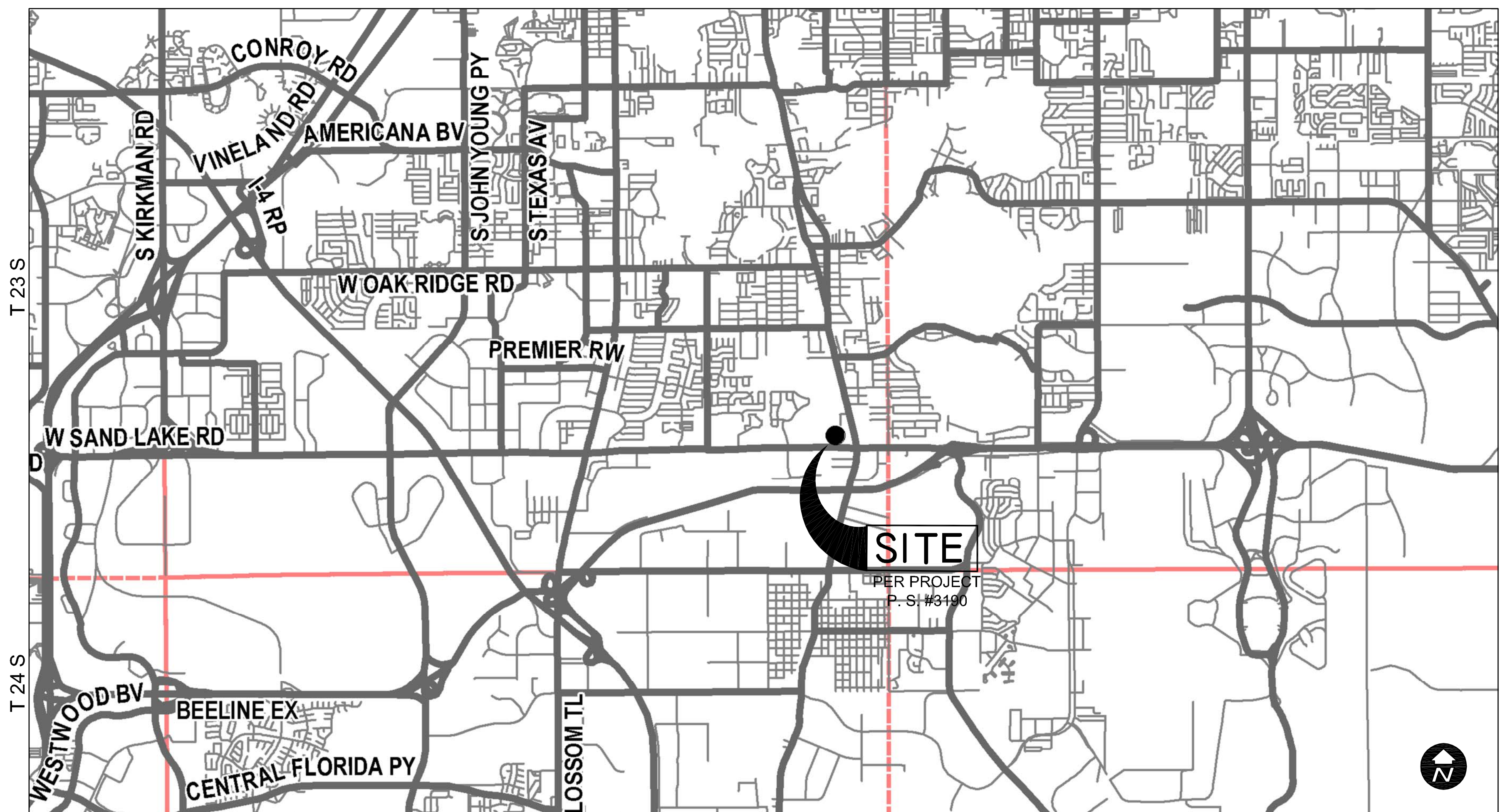
R 28 E

R 29 E

LOCATION MAP

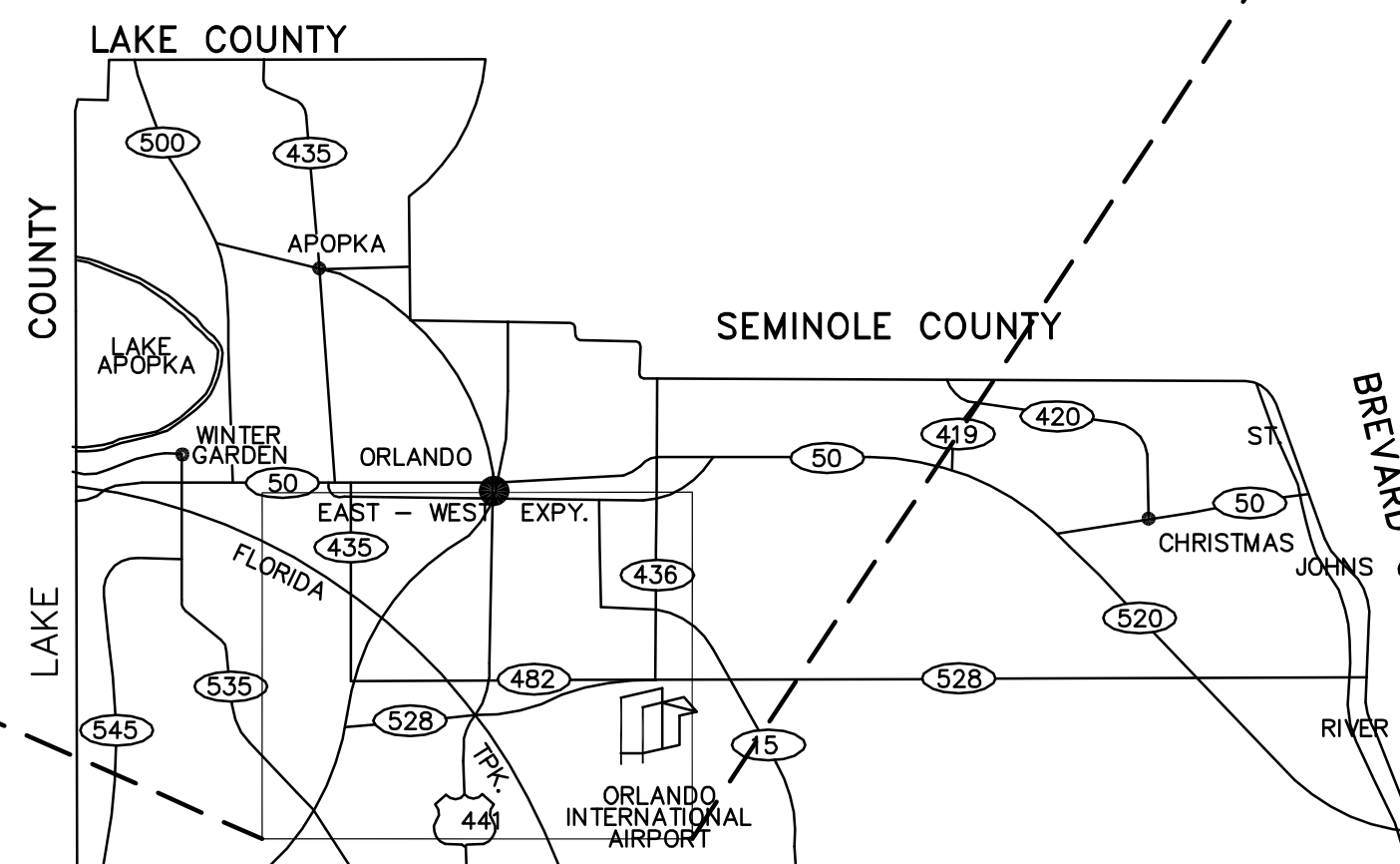
R 30 E

DRAWING INDEX



ORANGE COUNTY, FLORIDA
SCALE: 1" = 4,000'

NOTE:
SEE SURVEY FOR SPECIFIC LOCATIONS



ORANGE COUNTY, FLORIDA
SCALE: 1" = 50,000'

SHEET NO.	DWG. NO.	TITLE
01 OF 09	G100	COVER SHEET
02 OF 09	G200	PS#3190 - ORANGE AVENUE LOCATION MAP AND DRAWING INDEX
03 OF 09	G300	PS#3190 - ORANGE AVENUE GENERAL NOTES, ABBREVIATIONS AND LEGEND
04 OF 09	V100	PS#3190 - BOUNDARY SURVEY & TOPOGRAPHIC SURVEY
05 OF 09	C100	PS #3190 - ORANGE AVENUE SITE DEMOLITION PLAN
06 OF 09	C101	PS #3190 - ORANGE AVENUE SITE PLAN
07 OF 09	P100	PS #3190 - ORANGE AVENUE ODOR CONTROL PIPING
08 OF 09	D600	PS#3190 - ORANGE AVENUE MECHANICAL & CIVIL DETAILS
09 OF 09	D601	PS#3190 - ORANGE AVENUE STRUCTURAL DETAILS

REV	DATE	DESCRIPTION
0	JUNE 2014	ISSUED FOR BID

LINE IS 2 INCHES
AT FULL SIZE
(IF NOT SCALE ACCORDINGLY)



ORANGE COUNTY
UTILITIES DEPARTMENT
ENGINEERING DIVISION
9150 CURRY FORD ROAD ORLANDO, FL. 32825



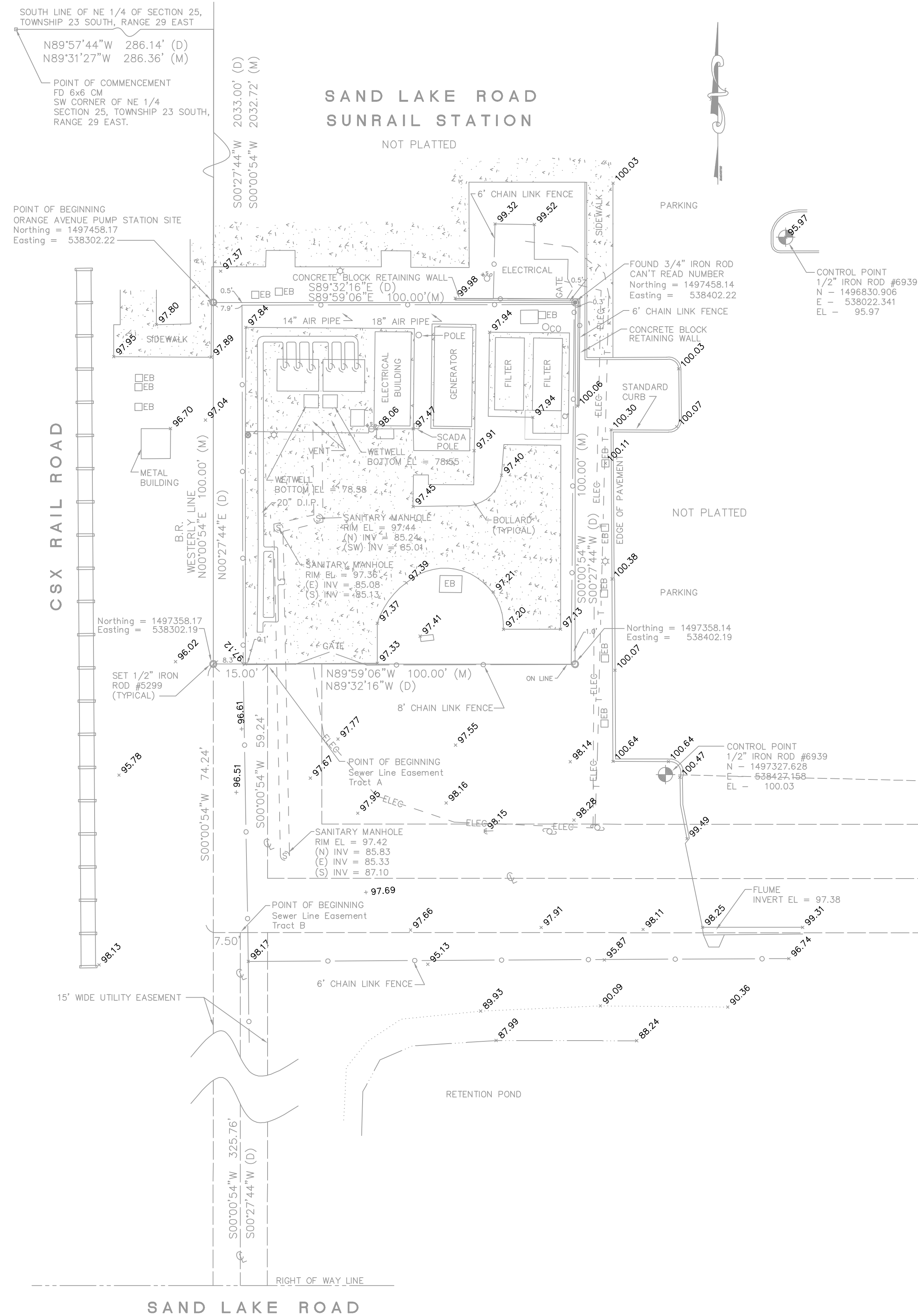
REISS ENGINEERING, INC.
1016 SPRING VILLAS PT
WINTER SPRINGS, FL 32708
(407) 679-5358

PS #3190 - ORANGE AVENUE
LOCATION MAP AND DRAWING INDEX

MELANIE D. PECKHAM, P.E.
PROFESSIONAL ENGINEER
FLORIDA LICENSE # 66487

OCU FILE NO.: 75705
DESIGNED BY: DNN
DRAWN BY: AJC
CHECKED BY: MDP
CADD FILE: PS-WALL.DWG

SCALE: NOTED
DRAWING NO.:
G200
SHEET: 02 OF 09



LEGAL DESCRIPTION, ORANGE AVENUE PUMP STATION SITE (O.R 2603, P.G. 64)

From the Southwest corner of the Northeast 1/4 of Section 25, Township 23 South, Range 29 East, Orange County, Florida, run N 89°57'44" E along the South line of said NE 1/4 286.14 feet. Run thence S 00°27'44" W 2033 feet to the Point of Beginning. Thence run S 89°32'16" E 100 feet, thence S 00°27'44" W 100 feet, thence N 89°32'16" W 100 feet, thence N 00°27'44" E 100 feet to the Point of Beginning. Lying in Containing 10,000 sq. ft. or 0.23 acres.

LEGAL DESCRIPTION, SEWER LINE EASEMENT (O.R. 2603, P.G. 65)

Tract A
 From the Southwest corner of the Northeast 1/4 of Section 25, Township 23 South, Range 29 East, Orange County, Florida, run N 89°57'44" E along the South line of said NE 1/4 286.14 feet; Run thence S 00°27'44" W 2133 feet; Thence run S 89°32'16" E 15 feet to the Point of Beginning; Thence run S 00°27'44" W on Center Line of 30 foot wide utility and access road easement 59.24 feet; Thence run N 89°32'16" W on Center Line of 30 foot wide utility and access road easement 832.5 feet more or less to the West right of way line of Orange Avenue, (State Road No. 527)

Tract B
 From the Southwest corner of the Northeast 1/4 of Section 25, Township 23 South, Range 29 East, Orange County, Florida, run N 89°57'44" E along the South line of said NE 1/4 286.14 feet; Run thence S 00°27'44" W 2207.24 feet; Thence run S 89°32'16" E 7.50 feet to the Point of Beginning; Thence run S 00°27'44" W on Center Line of 15 foot wide utility easement 325.76 feet more or less to the North right of way line of Sand Lake Road (State Road No. 528)

LEGEND		
FD - FOUND	CONCRETE	T - BURIED TELEPHONE
(P) - PLAT	WM - WATER METER	G - BURIED GAS
(M) - MEASURED	PP - POWER POLE	FOC - BURIED FIBER OPTIC CABLE
(D) - DEED	TR - TELEPHONE RISER	ELEC - BURIED ELECTRIC
(C) - CALCULATED	WV - WATER VALVE	ohc - OVERHEAD ELECTRIC
IR - IRON ROD	GV - GATE VALVE	PVC - POLYVINYL CHLORIDE
IP - IRON PIPE	BF - BACKFLOW PREVENTOR	DIP - DUCTILE IRON PIPE
ND - NAIL & DISK	FF - FINISH FLOOR ELEVATION	FM - FORCE MAIN
CM - CONCRETE MONUMENT	SG - SIGN	W - WATER MAIN
FF - FINISH FLOOR ELEVATION	EB - ELECTRIC BOX	RE - REUSE MAIN
UE - UTILITY EASEMENT	LP - LIGHT POLE	VCP - VETRIFIED CLAY PIPE
DE - DRAINAGE EASEMENT	GW - GUY WIRE	RCP - REINFORCED CONCRETE PIPE
R/W - RIGHT OF WAY	DM - DRAINAGE MANHOLE	
BR - BEARING REFERENCE	SM - SANITARY MANHOLE	
Δ - DELTA	TM - TELEPHONE MANHOLE	
R - RADIUS	WS - WATER SHUT-OFF	
CH - CHORD DISTANCE	A/C - AIR CONDITIONER	
CB - CHORD BEARING	OR - OFFICIAL RECORDS BOOK	
CL - CENTER LINE	PG - PAGE	
PL - PROPERTY LINE	SEC - SECTION	
INV - INVERT	TWN - TOWNSHIP	
EL - ELEVATION	RNG - RANGE	
		XX - PINE TREE W/SIZE
		XX - OAK TREE W/SIZE
		XX - TREE W/SIZE
		XX - PALM TREE W/SIZE

NOTES:

- Lands shown hereon were not abstracted by the surveyor for right-of-ways and/or easements of record or ownership.
- No underground utilities or structures were located unless otherwise shown.
- Unless it bears the signature and the original raised seal of a Florida licensed surveyor and mapper, this map is for information purposes only and is not valid.
- Distances are deed (D) and measured (M) unless otherwise noted.
- Coordinates are based on the Florida State Plane Coordinate System, East Zone, North American Datum of 1983/1990 adjustment and tied into Certified Corner Record #72500 & #72478.
- Bearings are referenced to the Westerly line of the Pump Station #3190 site as being N 00°00'54" E.
- Elevations are based on the North American Vertical Datum 1988 adjustment and tied into Orange County Bench Mark #S1316049 & # L1590003.
- Refer to the Survey Map Report of Surveying Services for Pump Station #3190 Improvements. Dated June 11, 2014. This map is not complete without the report.
- The legal descriptions as shown hereon were provided by the client, per Official Records Book 2603, Pages 64 & 65 of the Orange County, Florida Public Records.

REV	DATE	DESCRIPTION
0	JUNE 2014	ISSUED FOR BID

LINE IS 2 INCHES AT FULL SIZE (IF NOT SCALE ACCORDINGLY)



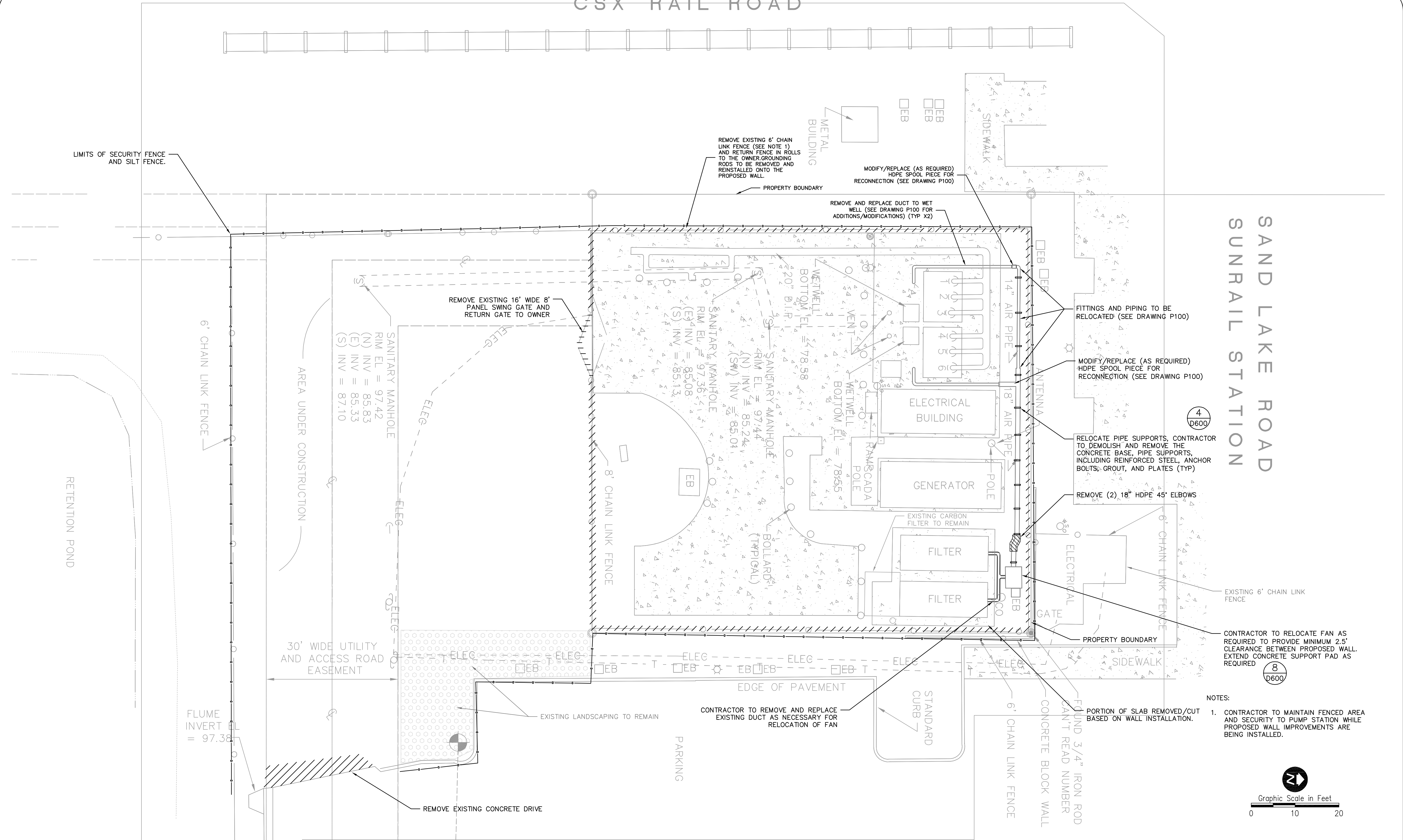
PS #3190 - ORANGE AVENUE BOUNDARY SURVEY & TOPOGRAPHIC SURVEY

OCU FILE NO.: 75705
 DESIGNED BY:
 DRAWN BY: RAB
 CHECKED BY: RAB
 CADD FILE: PS-3190.DWG

SCALE: 1" = 20'
 DRAWING NO.: **V100**
 SHEET: 04 OF 09

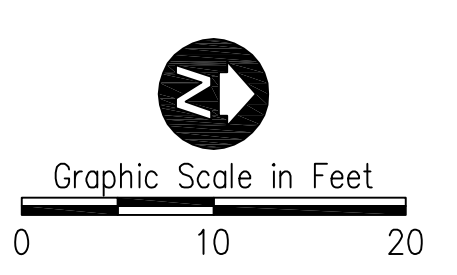
CSX RAIL ROAD

SAND LAKE ROAD
SUNRAIL STATION



- 4
D600
- RELOCATE PIPE SUPPORTS, CONTRACTOR TO DEMOLISH AND REMOVE THE CONCRETE BASE, PIPE SUPPORTS, INCLUDING REINFORCED STEEL, ANCHOR BOLTS, GROUT, AND PLATES (TYP)
- REMOVE (2) 18" HDPE 45' ELBOWS
- 6' CHAIN LINK FENCE
- EXISTING 6' CHAIN LINK FENCE
- CONTRACTOR TO RELOCATE FAN AS REQUIRED TO PROVIDE MINIMUM 2.5' CLEARANCE BETWEEN PROPOSED WALL. EXTEND CONCRETE SUPPORT PAD AS REQUIRED
- 8
D600

NOTES:
1. CONTRACTOR TO MAINTAIN FENCED AREA AND SECURITY TO PUMP STATION WHILE PROPOSED WALL IMPROVEMENTS ARE BEING INSTALLED.



REV	DATE	DESCRIPTION
0	JUNE 2014	ISSUED FOR BID

LINE IS 2 INCHES
AT FULL SIZE
(IF NOT SCALE ACCORDINGLY)

ORANGE COUNTY
GOVERNMENT
FLORIDA

ORANGE COUNTY UTILITIES DEPARTMENT ENGINEERING DIVISION

9150 CURRY FORD ROAD ORLANDO, FL. 32825

RE

REISS ENGINEERING, INC.
1016 SPRING VILLAS PT
WINTER SPRINGS, FL 32708
(407) 679-5358

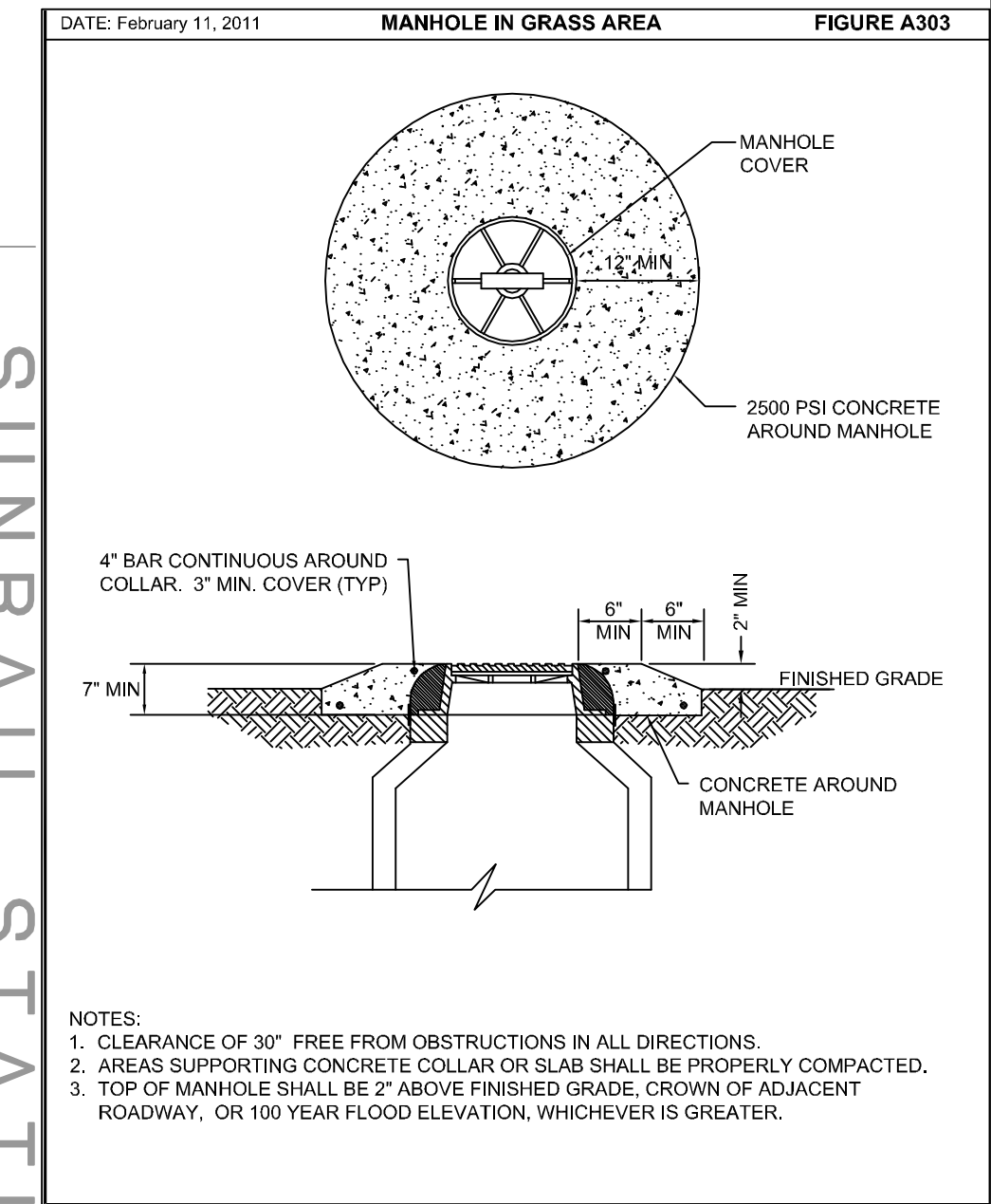
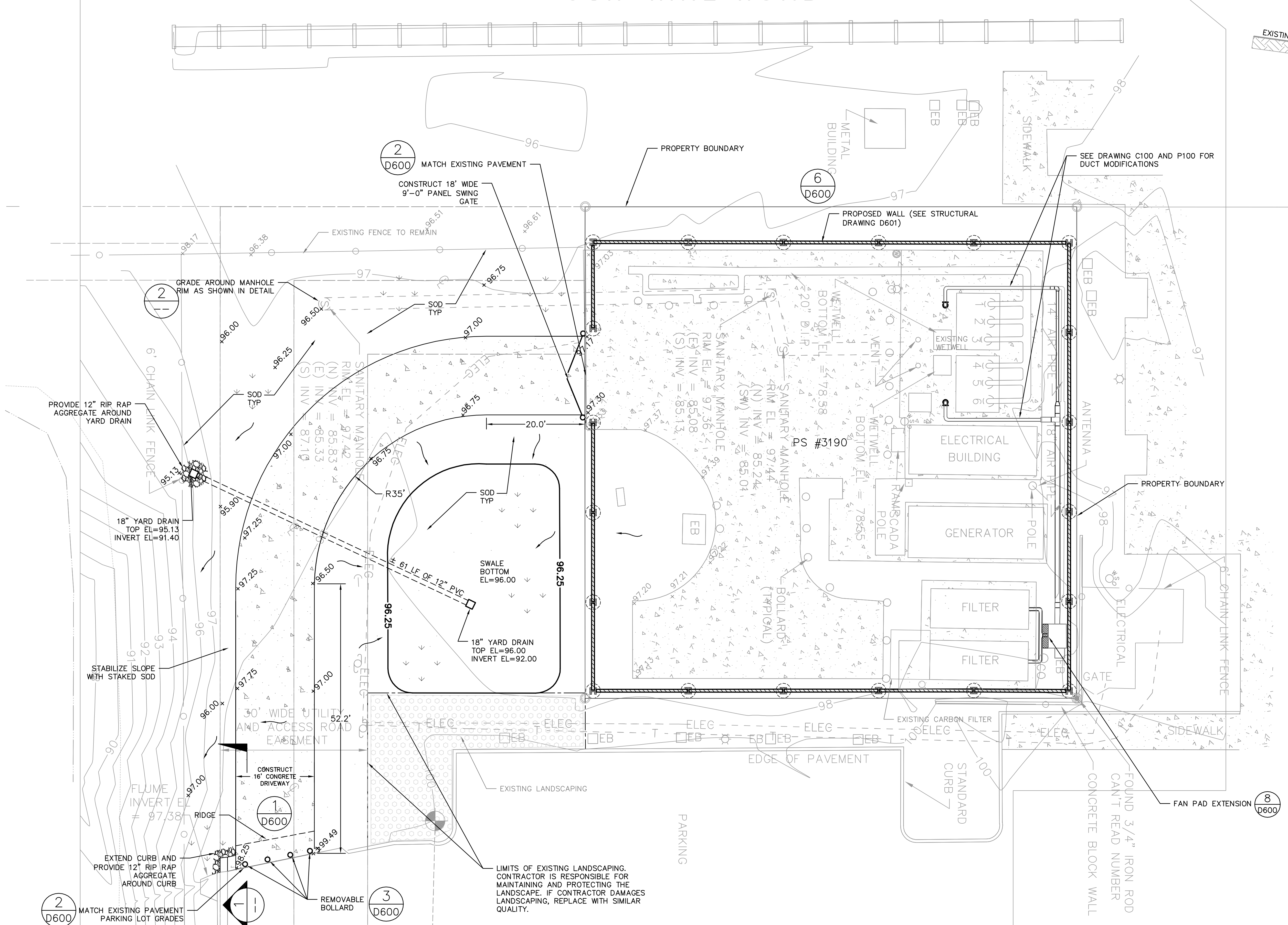
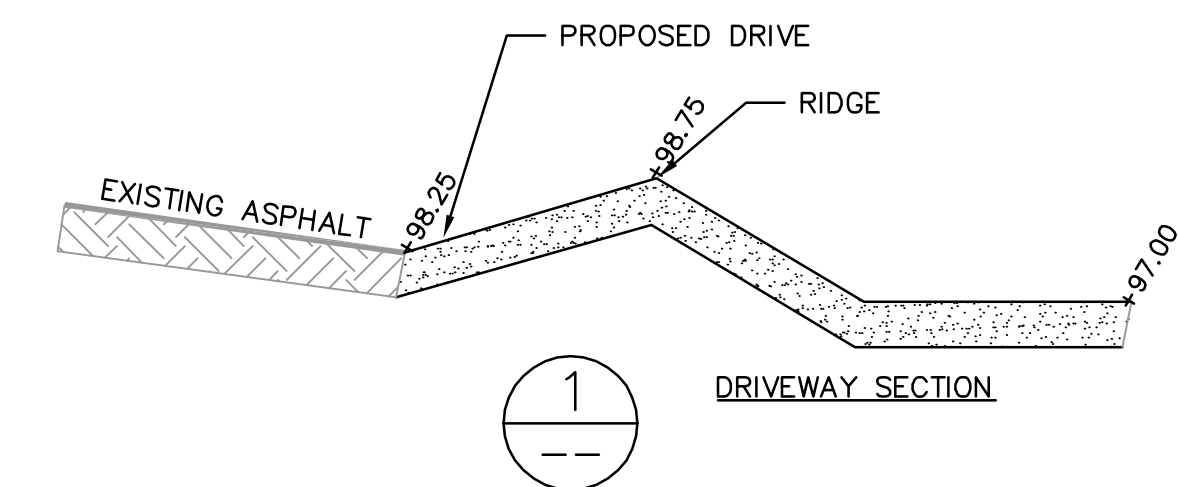
**PS #3190 - ORANGE AVENUE
SITE DEMOLITION PLAN**

OCU FILE NO.: 75705
DESIGNED BY: DNN
DRAWN BY: AJC
CHECKED BY: MDP
CADD FILE: PS-3190.DWG

MELANIE D. PECKHAM, P.E.
PROFESSIONAL ENGINEER
FLORIDA LICENSE # 66487

SCALE: NOTED
DRAWING NO.: **C100**
SHEET: 05 OF 09

CSX RAIL ROAD



SUNRAIL STATION

2
MANHOLE IN GRASS
SCALE: NTS

- NOTES:
- CONTRACTOR TO REPAIR AND REPLACE AREAS IMPACTED BY WORK DONE, INCLUDING REPAIR OF CONCRETE CURBS OR SIDEWALKS, SODDED AREAS, AND DIRT ROAD.
 - ORANGE COUNTY UTILITIES TO COORDINATE WITH PROPERTY OWNER FOR WORK OUTSIDE ACCESS EASEMENT.
 - SITE ACCESS AND STAGING IS AVAILABLE ONLY SOUTH OF THE PUMP STATION AND INSIDE THE PUMP STATION. CONTRACTOR TO MAINTAIN ACCESS TO THE PUMP WETWELL AND PROVIDE ACCESS TO O.C. PERSONNEL AT ALL TIMES.
 - CONTRACTOR TO PROVIDE A RUBBLE DRIVE FOR BACKTRACKING AT CONSTRUCTION ENTRANCE.
 - CONTRACTOR TO RE-ESTABLISH GROUNDING RODS TO THE WALL.



Graphic Scale in Feet
0 10 20

REV	DATE	DESCRIPTION
0	JUNE 2014	ISSUED FOR BID

LINE IS 2 INCHES AT FULL SIZE (IF NOT SCALE ACCORDINGLY)

ORANGE COUNTY GOVERNMENT FLORIDA

ORANGE COUNTY UTILITIES DEPARTMENT ENGINEERING DIVISION

9150 CURRY FORD ROAD ORLANDO, FL. 32825

RE

REISS ENGINEERING, INC.
1016 SPRING VILLAS PT
WINTER SPRINGS, FL 32708
(407) 679-5358

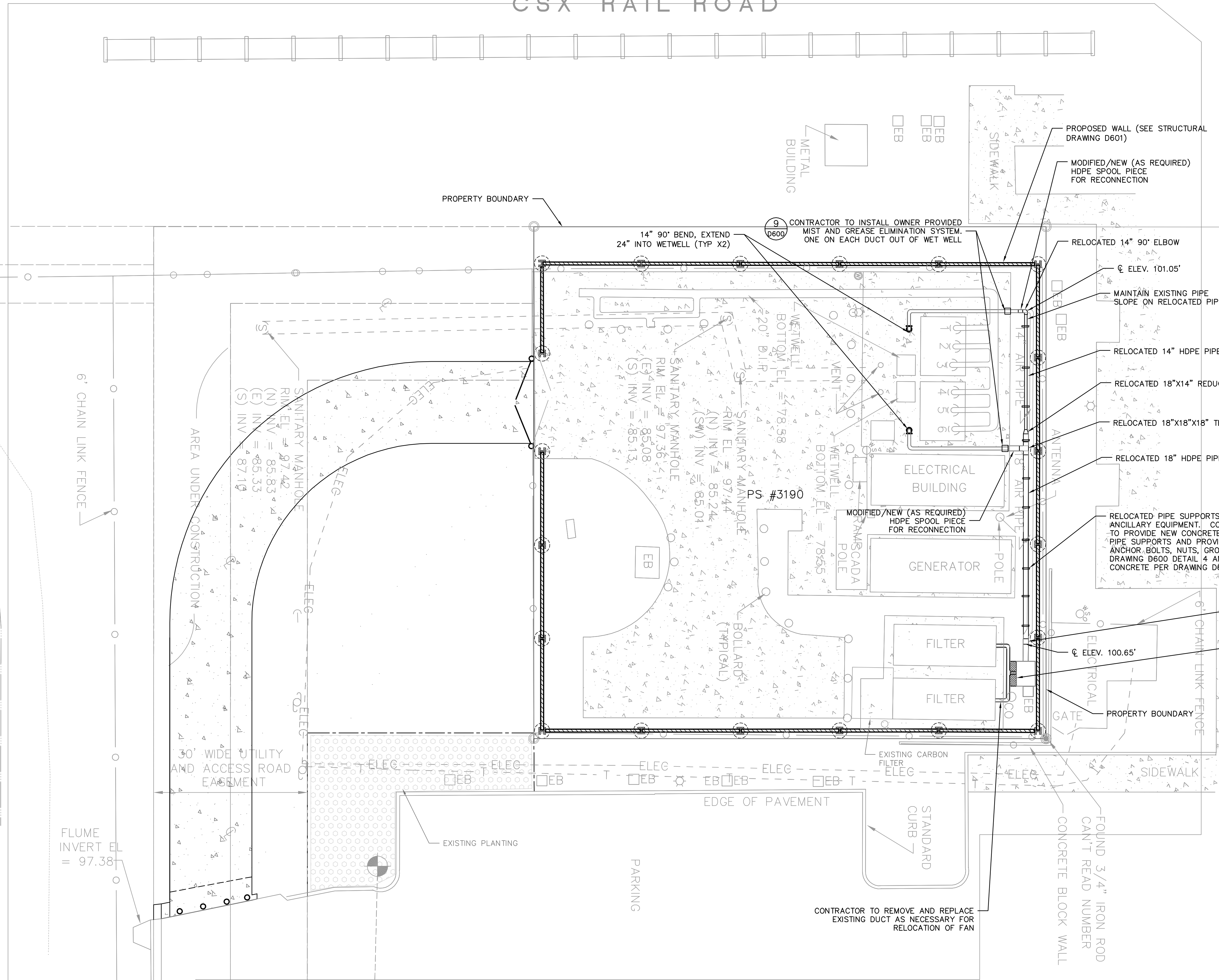
PS #3190 - ORANGE AVENUE SITE PLAN

OCU FILE NO.: 75705
DESIGNED BY: DNN
DRAWN BY: AJC
CHECKED BY: MDP
CADD FILE: PS-3190.DWG

SCALE: NOTED
DRAWING NO.: **C101**
SHEET: 06 OF 09

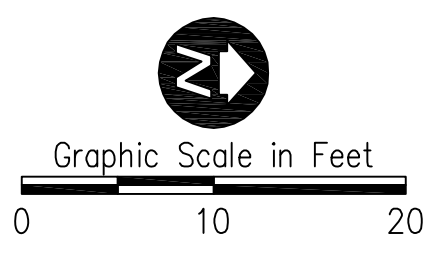
CSX RAIL ROAD

SAND LAKE ROAD
SUNRAIL STATION



CONTRACTOR TO RELOCATE FAN AS REQUIRED TO PROVIDE 2.5' CLEARANCE BETWEEN PROPOSED WALL. EXTEND CONCRETE SUPPORT PAD AS REQUIRED

- NOTES:
1. DURING CONSTRUCTION OF PROPOSED WALL, A MINIMUM CLEARANCE OF 4' IS REQUIRED FOR AUGERING. CONTRACTOR TO SEQUENCE CONSTRUCTION ACCORDINGLY FOR THE RELOCATION OF ODOR CONTROL PIPING.
 2. CONTRACTOR TO MAINTAIN SLOPE OF ODOR CONTROL PIPE TOWARDS THE FAN. CONTRACTOR TO FIELD VERIFY ELEVATION OF PROPOSED COUPLING AND SPOOL AT FAN LOCATION.



REV	DATE	DESCRIPTION
0	JUNE 2014	ISSUED FOR BID

LINE IS 2 INCHES
AT FULL SIZE
(IF NOT SCALE ACCORDINGLY)

ORANGE COUNTY
UTILITIES DEPARTMENT
ENGINEERING DIVISION

9150 CURRY FORD ROAD ORLANDO, FL. 32825

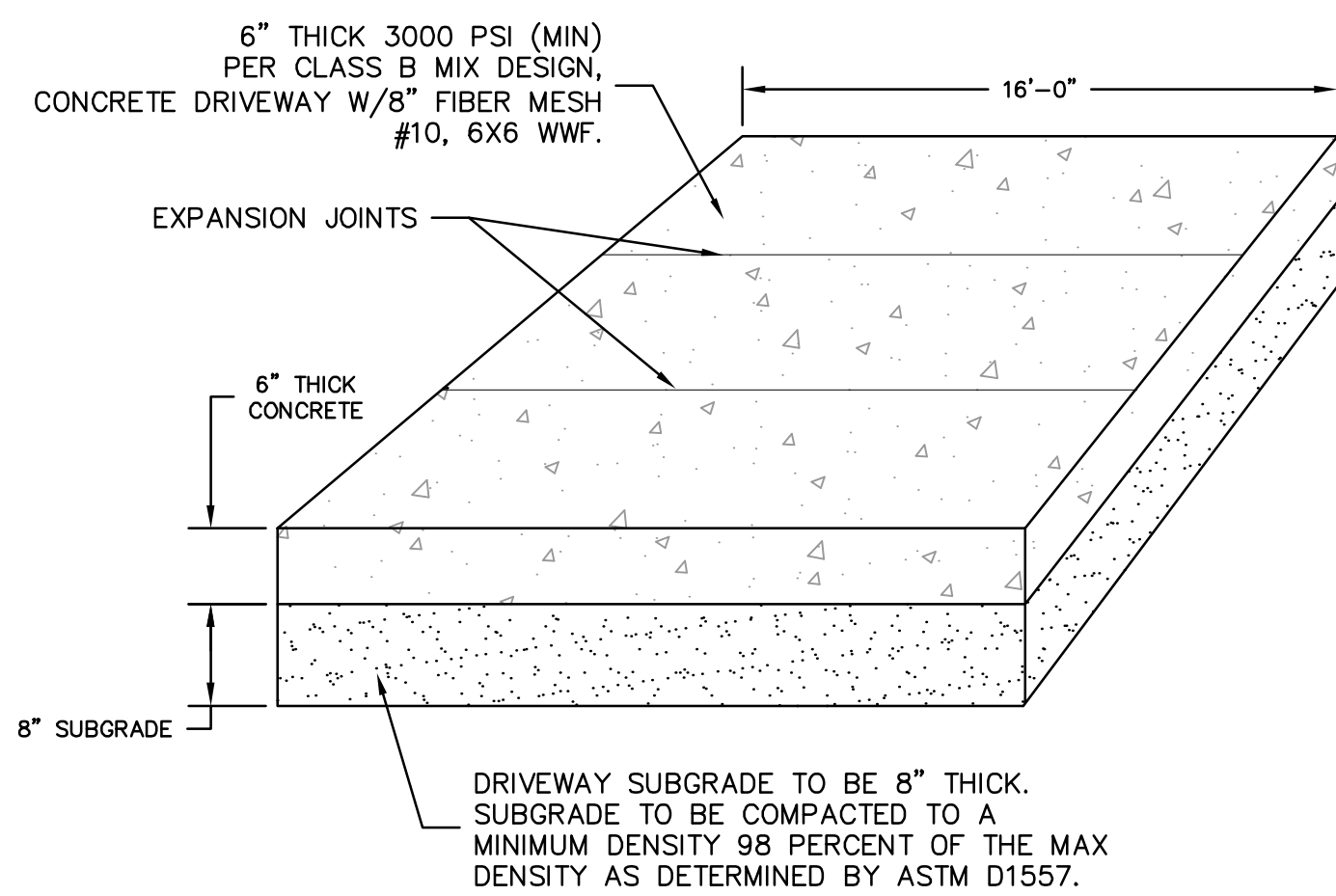
RE ENGINEERING, INC.
1016 SPRING VILLAS PT
WINTER SPRINGS, FL 32708
(407) 679-5358

**PS #3190 - ORANGE AVENUE
ODOR CONTROL PIPING**

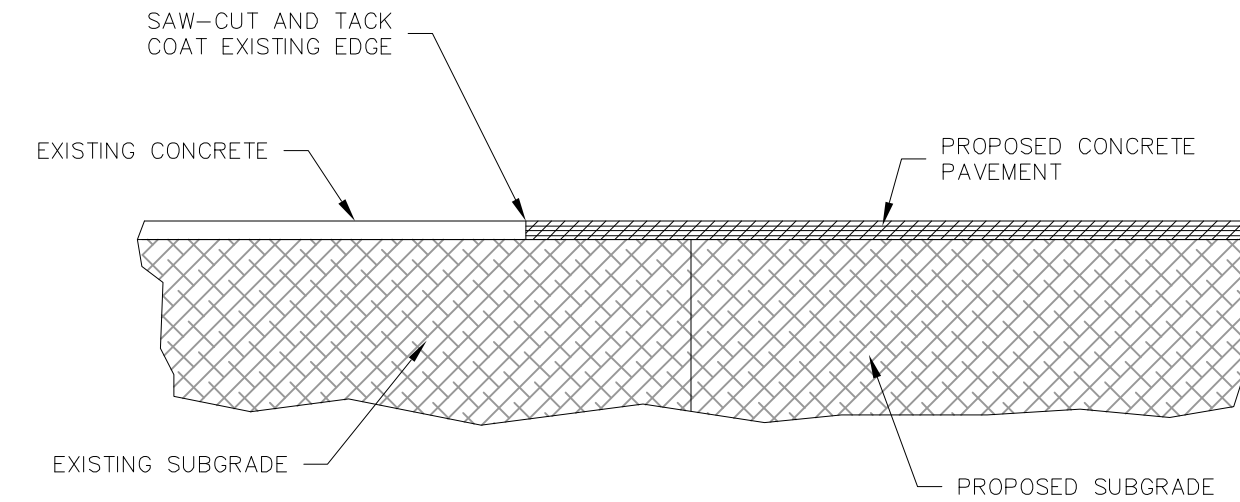
OCU FILE NO.: 75705
DESIGNED BY: DNN
DRAWN BY: AJC
CHECKED BY: MDP
CADD FILE: PS-3190.DWG

MELANIE D. PECKHAM, P.E.
PROFESSIONAL ENGINEER
FLORIDA LICENSE # 66487

SCALE: NOTED
DRAWING NO.: **P100**
SHEET: 07 OF 09

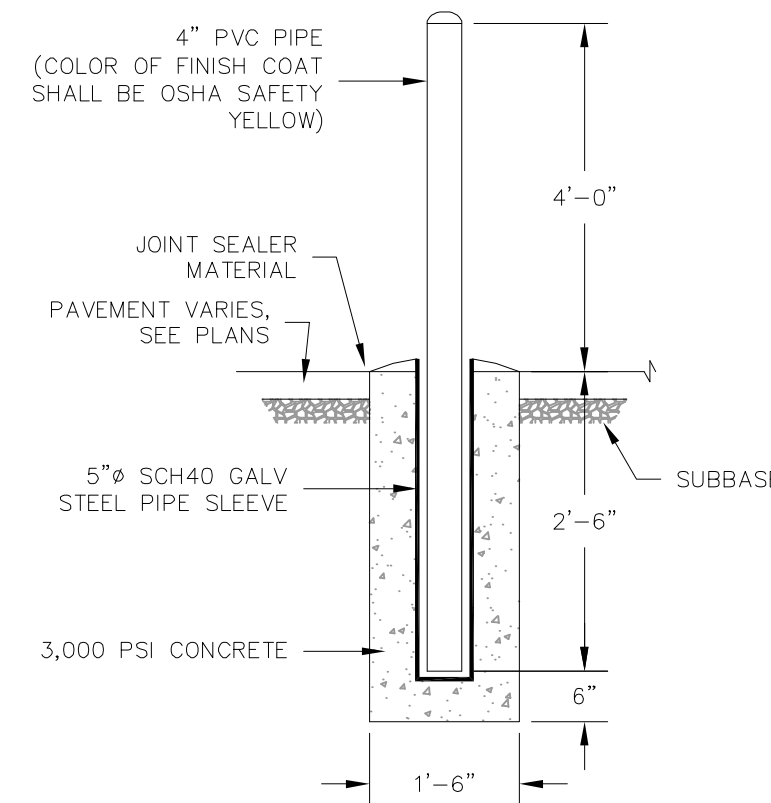


1 CONCRETE DRIVE DETAIL
SCALE: NTS



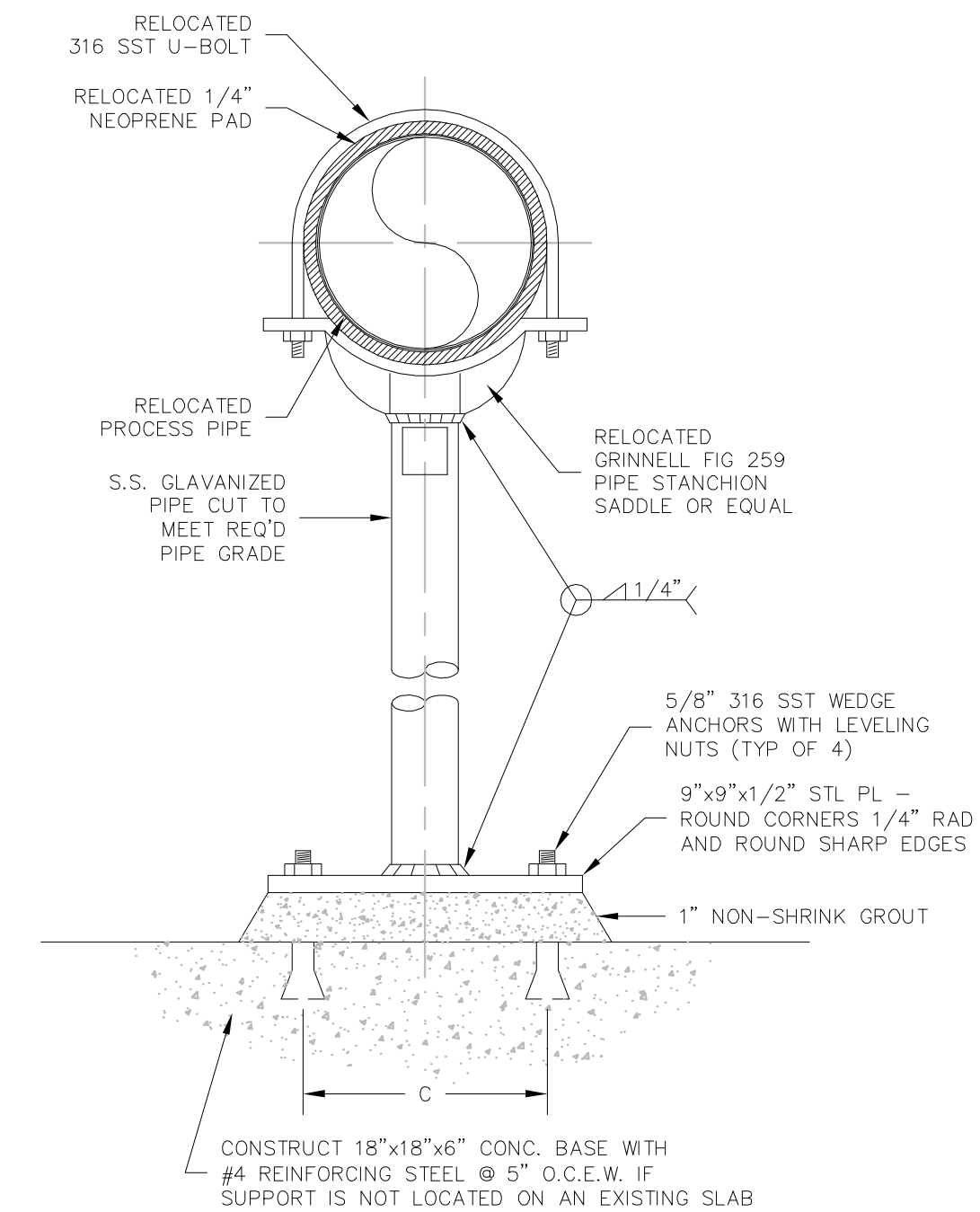
NOTES:
1. NEW CONCRETE PAVEMENT SHALL BE SAME THICKNESS AND TYPE AS EXISTING CONCRETE.

2 DRIVEWAY CONNECTION DETAIL
SCALE: NTS



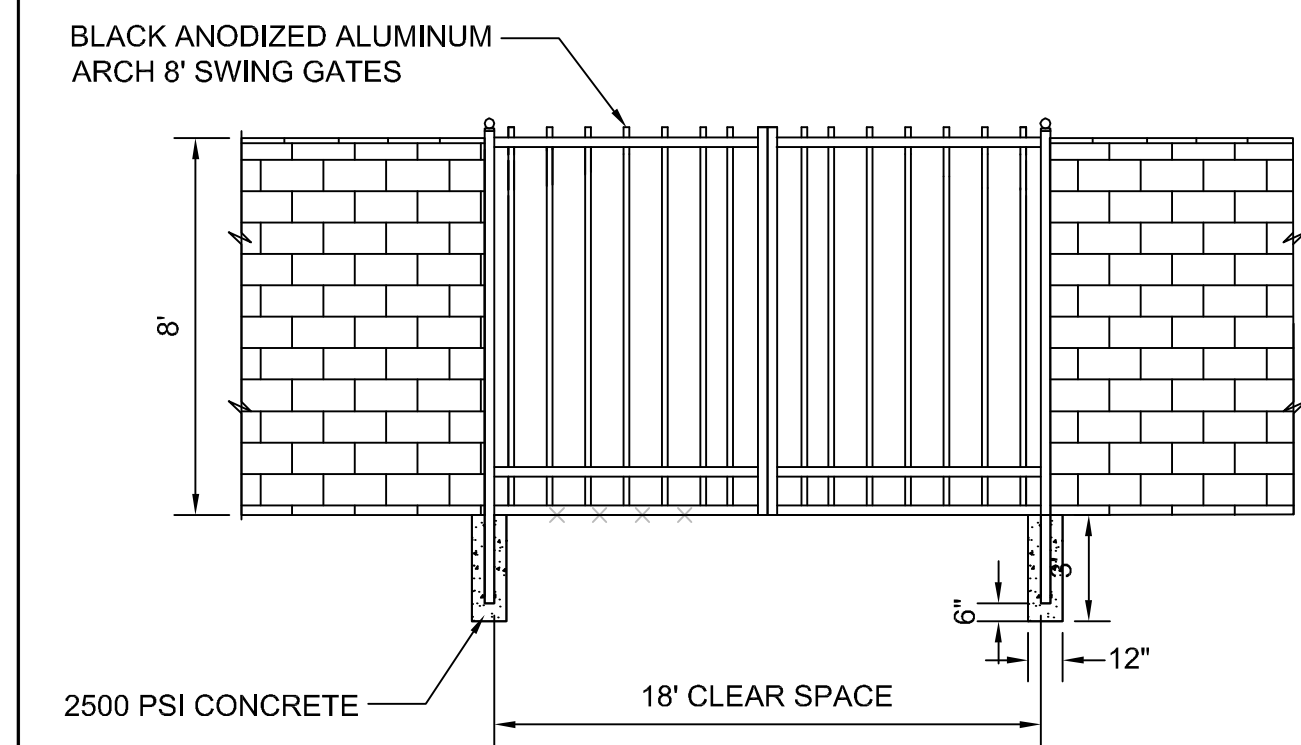
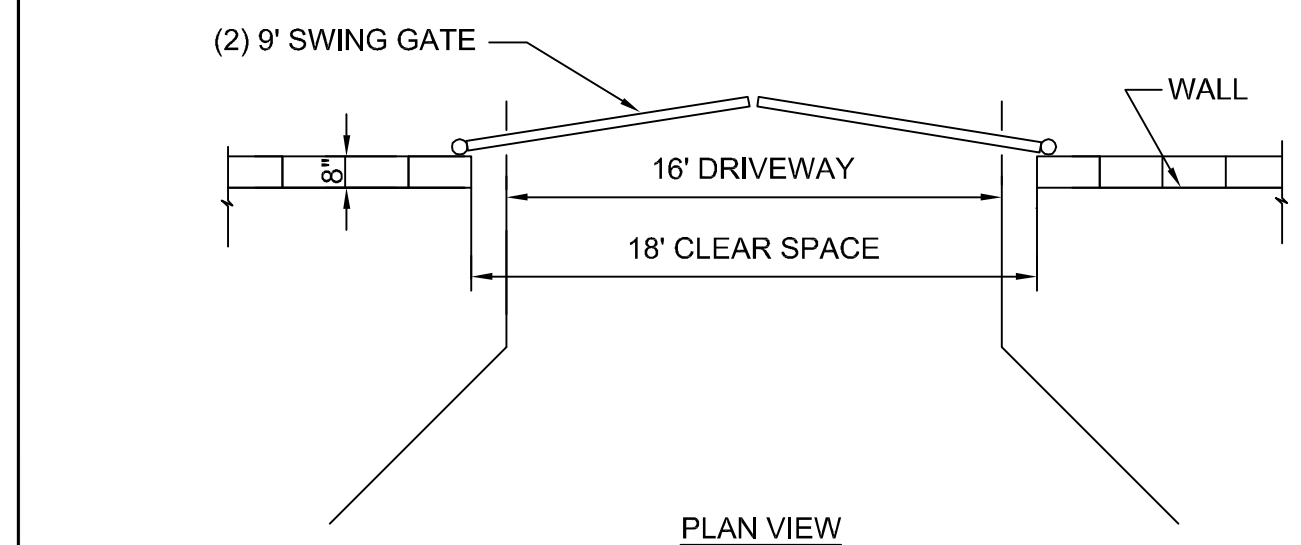
REMOVEABLE

3 REMOVEABLE BOLLARD
SCALE: NTS



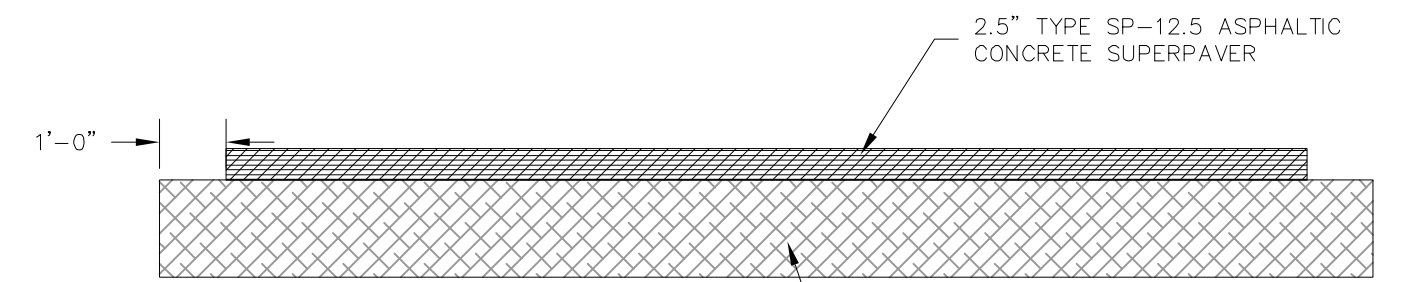
4 RELOCATED STANCHION SADDLE PIPE SUPPORT
SCALE: NTS

ORANGE COUNTY UTILITIES STANDARDS AND CONSTRUCTION SPECIFICATIONS MANUAL
APPENDIX A STANDARD DRAWINGS GENERAL
DATE: February 11, 2011 CANTILEVER SWING GATE FIGURE A407-2



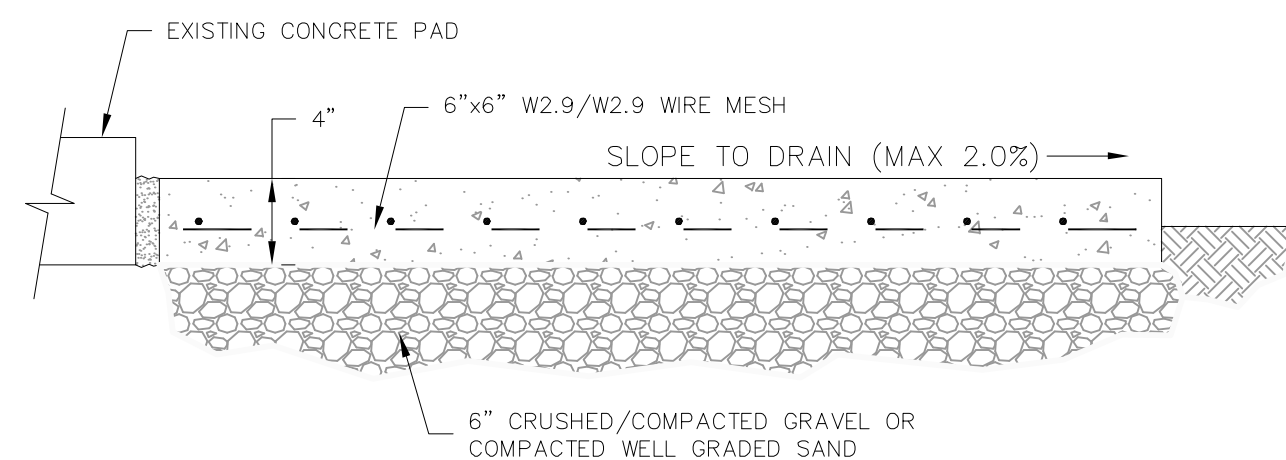
NOTES:
1. GATE POSTS SHALL NOT BE ATTACHED TO THE WALL AND SHALL BE PLACED ON THE INTERIOR SIDE OF THE WALL.

6 16' SWING GATE
SCALE: NTS



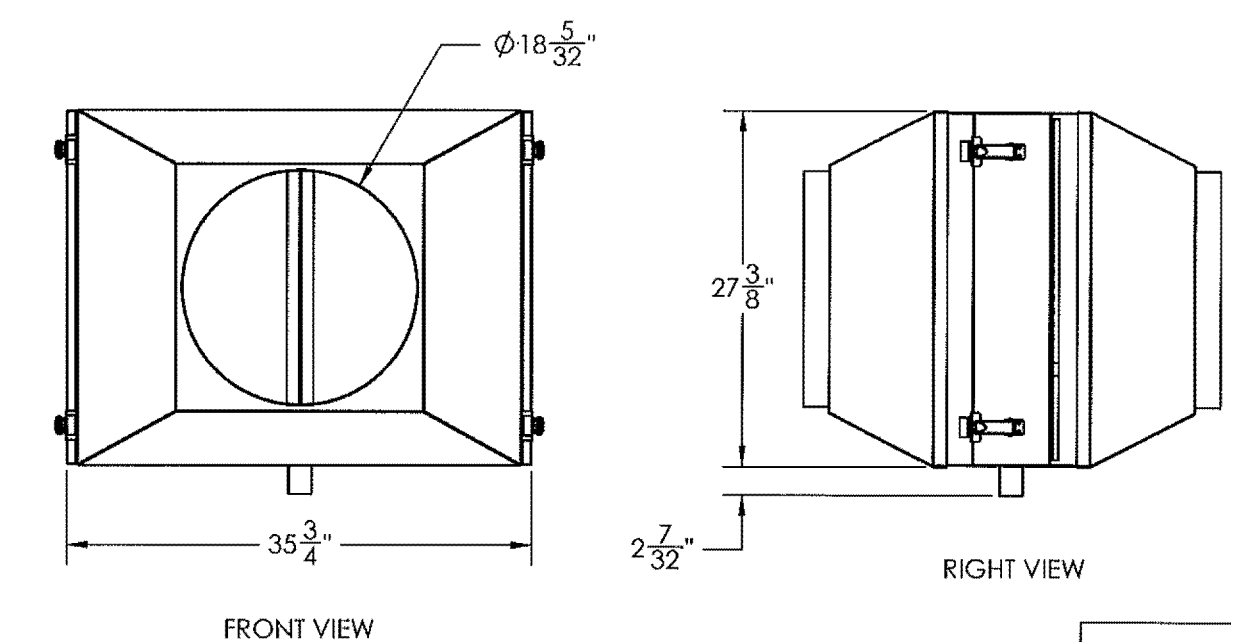
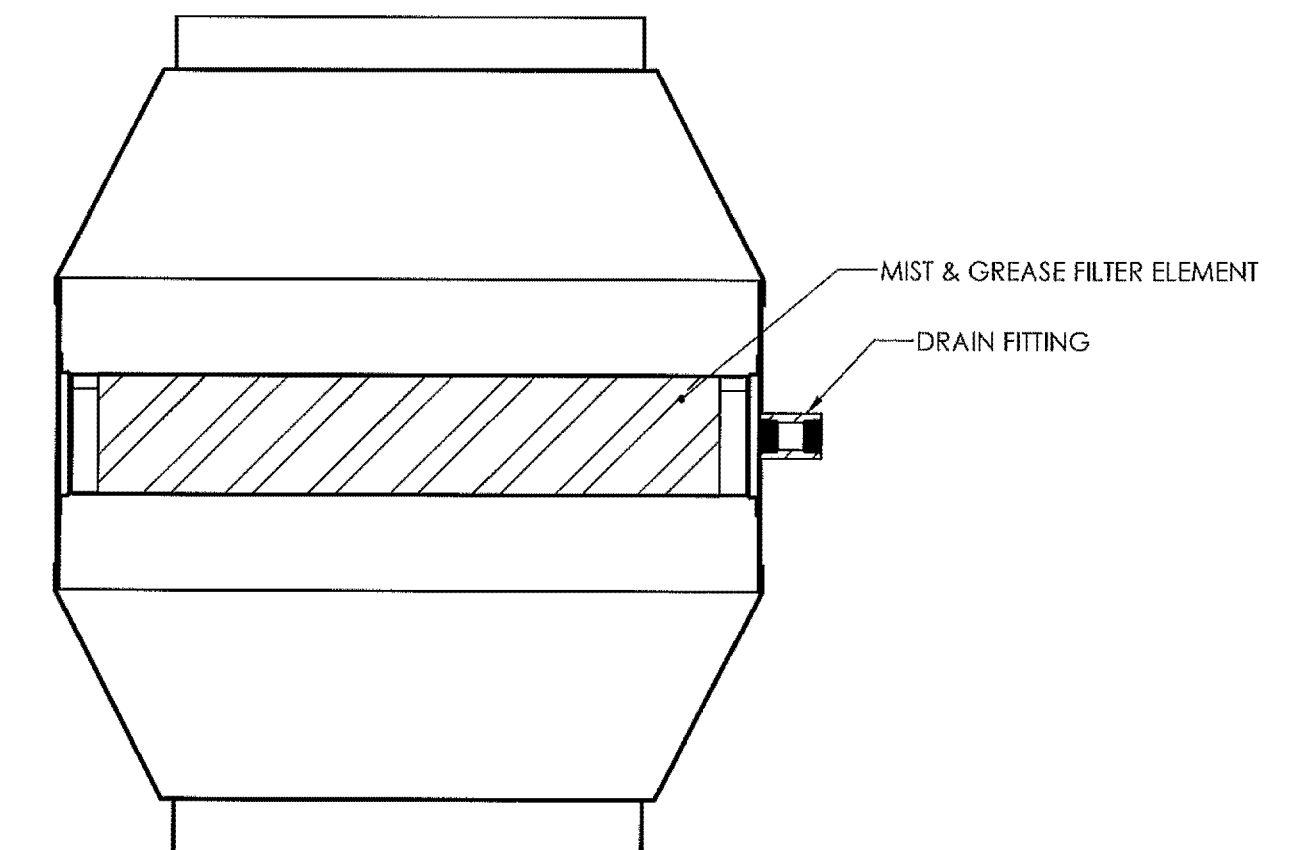
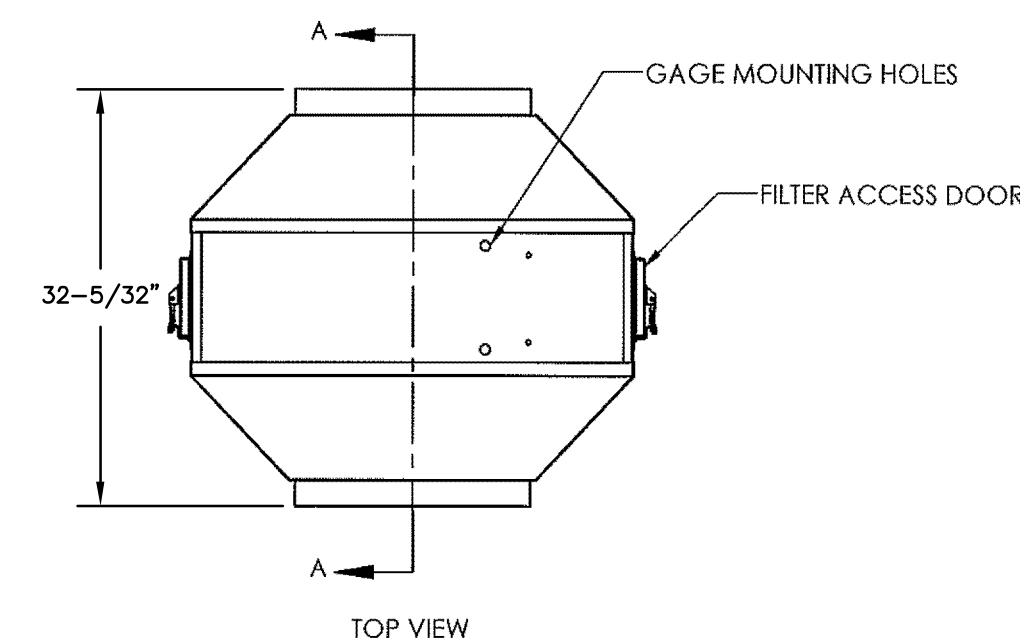
NOTE:
REPLACE EXISTING DRIVEWAY FOLLOWING SUBSTANTIAL COMPLETION AS DIRECTED BY OWNER

7 CONCRETE REPAIR DETAIL
SCALE: NTS



NOTES:
1. EXPANSION JOINTS 3/8" THICK PREMOLDED JOINT FILLER.
2. PROVIDE EXPANSION JOINTS AGAINST STRUCTURAL CONCRETE AND FOR JOINTS IN SIDEWALK.

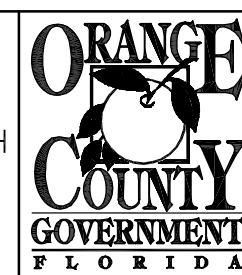
8 CONCRETE SUPPORT PAD EXTENSION DETAIL
SCALE: NTS



9 MIST AND GREASE ELIMINATION SYSTEM DETAIL
SCALE: NTS

REV	DATE	DESCRIPTION
0	JUNE 2014	ISSUED FOR BID

LINE IS 2 INCHES AT FULL SIZE (IF NOT SCALE ACCORDINGLY)



ORANGE COUNTY UTILITIES DEPARTMENT ENGINEERING DIVISION
9150 CURRY FORD ROAD ORLANDO, FL. 32825



REISS ENGINEERING, INC.
1016 SPRING VILLAS PT
WINTER SPRINGS, FL 32708
(407) 679-5358

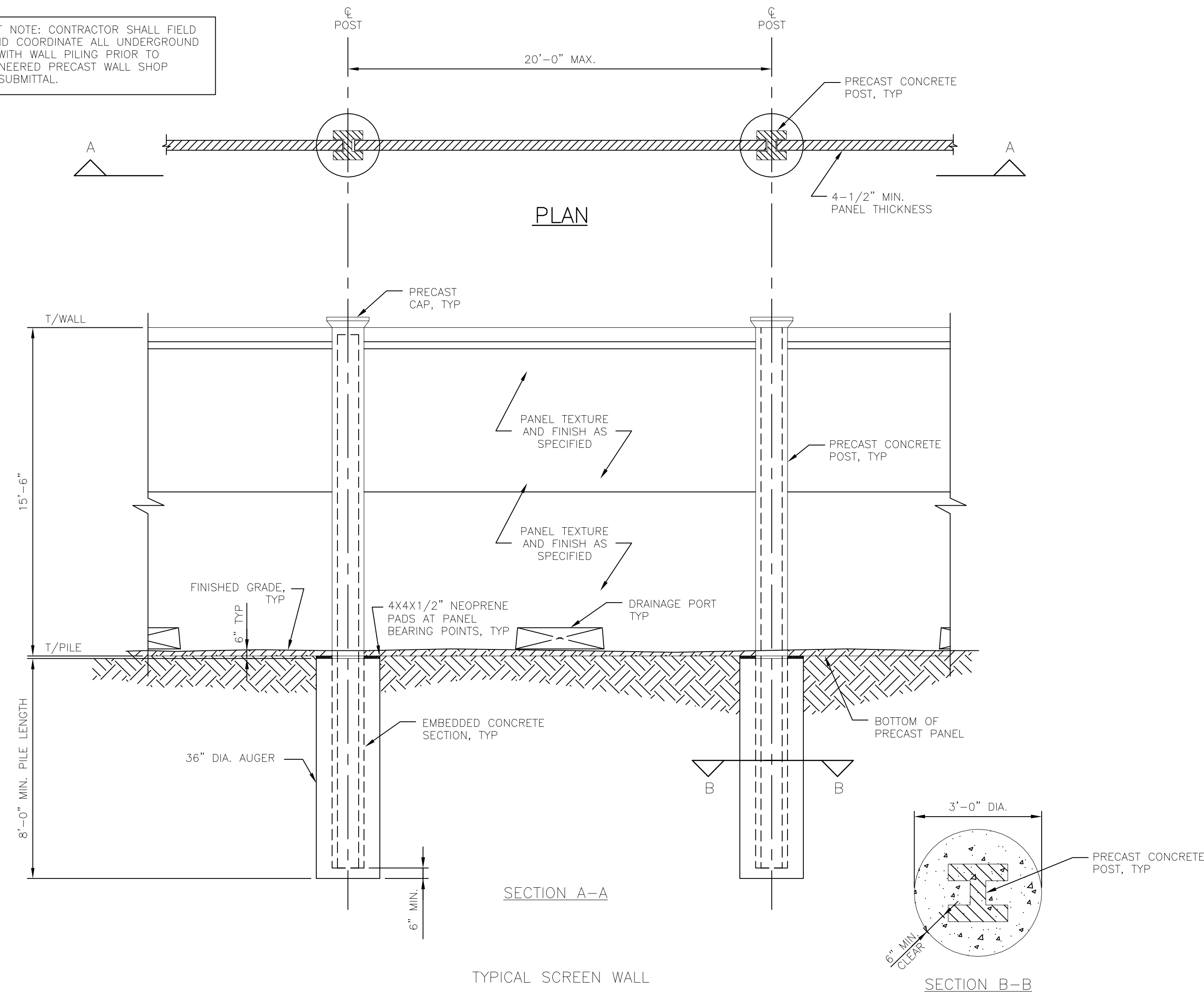
PS #3190 - ORANGE AVENUE MECHANICAL & CIVIL DETAILS

OCU FILE NO.: 75705
DESIGNED BY: DNN
DRAWN BY: AJC
MELANIE D. PECKHAM, P.E.
PROFESSIONAL ENGINEER
FLORIDA LICENSE # 66487

CHECKED BY: MDP
CADD FILE: PS-WALL.DWG

SCALE: NOTED
DRAWING NO.: D600
SHEET: 08 OF 09

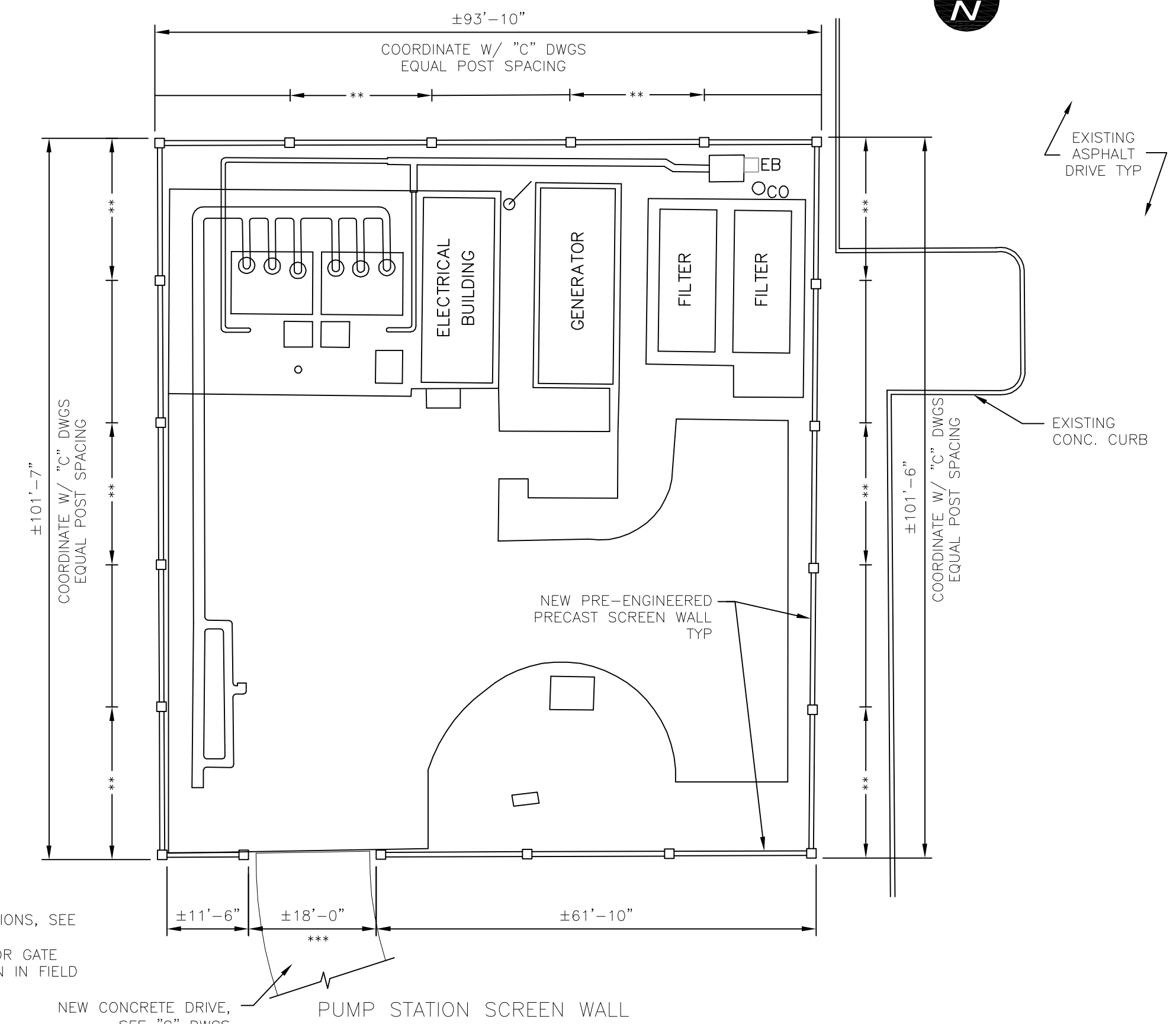
IMPORTANT NOTE: CONTRACTOR SHALL FIELD VERIFY AND COORDINATE ALL UNDERGROUND UTILITIES WITH WALL PILING PRIOR TO PRE-ENGINEERED PRECAST WALL SHOP DRAWING SUBMITTAL.



TYPICAL SCREEN WALL
DETAIL
1/4"=1'-0"
A
501

DESIGN SOIL PARAMETERS:	
SOIL TYPE (CLAY OR SAND)	SAND
SOIL FRICTION ANGLE	32°
SOIL COHESION	0 PSF
MOIST SOIL UNIT WEIGHT (UNSUBMERGED)	110 PCF
EFFECTIVE UNIT WEIGHT (SUBMERGED)	48 PCF
DEPTH OF WATER TABLE	1 FOOT
PARAMETERS PROVIDED BY TERRACON, TABLE 1, SOIL PROPERTIES FOR PUMP STATION 3190 SCREEN WALL. TERRACON PROJECT NO.H1145049.	

** THIS PANEL TO HAVE IMPRESSIONS, SEE FIGURE IN SPECIFICATION 03410
*** SEE DETAIL "C" DRAWINGS FOR GATE DETAIL AND COORDINATE LOCATION IN FIELD PRIOR TO WALL FABRICATION



KEYPLAN
1/16"=1'-0"

NOTE:
1) WHERE PLACEMENT OF AUGERED FOUNDATION FOR WALL POSTS INTERFERES WITH EXISTING SLABS-ON-GRADE THE CONTRACTOR SHALL NOTIFY THE ENGINEER AND PROVIDE PHOTOGRAPHS OF THE AREA. IT IS EXPECTED THAT SEVERAL FOUNDATION INSTALLATIONS WILL NECESSITATE THE REMOVAL OF A PORTION OF THE FILTERS SLAB WHICH WILL BE THE RESPONSIBILITY OF THE CONTRACTOR ONCE APPROVED BY THE ENGINEER.

GENERAL STRUCTURAL NOTES

DESIGN CRITERIA

CODES:

2010 FLORIDA BUILDING CODE

REINFORCED CONCRETE: ACI 318 "BUILDING CODE REQUIREMENTS FOR STRUCTURAL CONCRETE"

GENERAL CONDITIONS

ALL STRUCTURAL DRAWINGS SHALL BE USED IN CONJUNCTION WITH THE MECHANICAL, CIVIL, ELECTRICAL, AND SHOP DRAWINGS AND SPECIFICATIONS.

THE CONTRACTOR SHALL REVIEW AND VERIFY DIMENSIONS SHOWN IN ALL PLANS AND REVIEW ALL FIELD CONDITIONS THAT MAY AFFECT THE INSTALLATION OF THE FACILITY. SHOULD DISCREPANCIES APPEAR, THE CONTRACTOR SHALL NOTIFY THE ENGINEER IN WRITING TO OBTAIN ENGINEER'S CLARIFICATION BEFORE COMMENCING WITH THE WORK.

THE CONTRACTOR SHALL TAKE ANY AND ALL NECESSARY MEASURES TO PROTECT EXISTING STRUCTURES FROM DAMAGE WHEN WORKING IN AND AROUND EXISTING STRUCTURES PERFORMING WORK SUCH AS DEMOLITION, FOUNDATION EXCAVATION, AND OTHERS.

WIND LOADS:

- ULTIMATE DESIGN WIND SPEED, V_{ult} (3-SECOND GUST) 145 MPH
- NOMINAL DESIGN WIND SPEED, V_{50} 112 MPH
- RISK CATEGORY III
- EXPOSURE CATEGORY C
- ENCLOSURE CLASSIFICATION N/A
- INTERNAL PRESSURE COEFFICIENT, GCP_i N/A
- WIND PRESSURES CALCULATED IN ACCORDANCE TO ASCE/SEI 7-10, 29.4.1 DESIGN WIND LOADS-SOLID FREESTANDING WALLS.

DESIGN WIND PRESSURES	
POST AND WALL PANELS (LRFD)	68 PSF
POST AND WALL PANELS (ASD)	39 PSF

REINFORCING STEEL

REINFORCEMENT SHALL CONFORM TO ASTM A615, GRADE 60 REQUIREMENTS. WELDED WIRE FABRIC, ASTM A185. ALL ACCESSORIES SHALL BE IN CONFORMANCE WITH ACI 315 REQUIREMENTS. REINFORCING STEEL SHALL HAVE THE FOLLOWING CLEAR COVER UNLESS OTHERWISE NOTED:

- CONCRETE CAST AGAINST EARTH 3"
- FORMED SURFACES IN CONTACT WITH SOIL, SEWAGE, WATER OR EXPOSED TO WEATHER 2"

LAP SPLICES SHALL BE AS SHOWN ON THE DRAWINGS. FOR LAP SPLICES NOT SHOWN ON THE DRAWINGS, THE CONTRACTOR SHALL OBTAIN ENGINEERS APPROVAL.

CONCRETE

ALL MATERIALS AND METHODS OF CONSTRUCTION SHALL BE IN ACCORDANCE WITH ACI 318 REQUIREMENTS (LATEST EDITION)

ALL CONCRETE SHALL BE AIR-ENTRAINED WITH A MINIMUM 28-DAY COMPRESSIVE STRENGTH AS NOTED BELOW.

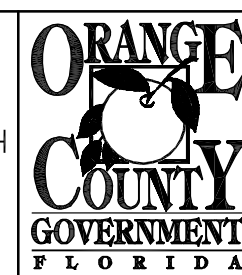
- PRECAST PANELS AND POST: $f'_c = 5,000$ PSI
- FOUNDATIONS: $f'_c = 2,500$ PSI

WATER REDUCING AGENT SHALL BE IN ACCORDANCE WITH ASTM C494

ALL CONCRETE SURFACES EXPOSED TO AIR, UNLESS OTHERWISE NOTED IN SPECIFICATIONS, SHALL BE TREATED WITH AN APPROPRIATE CURING COMPOUND AS SOON AS CEMENT FINISHING IS COMPLETED OR FORMS ARE REMOVED.

REV	DATE	DESCRIPTION
0	JUNE 2014	ISSUED FOR BID

LINE IS 2 INCHES
AT FULL SIZE
(IF NOT SCALE ACCORDINGLY)



ORANGE COUNTY UTILITIES DEPARTMENT ENGINEERING DIVISION
9150 CURRY FORD ROAD ORLANDO, FL. 32825



REISS ENGINEERING, INC.
1016 SPRING VILLAS PT
WINTER SPRINGS, FL 32708
(407) 679-5358

PS #3190 - ORANGE AVENUE
STRUCTURAL DETAILS

JOHN SOBCHAK, P.E.
PROFESSIONAL ENGINEER
FLORIDA LICENSE # 71407

OCU FILE NO.: 75705
DESIGNED BY: JS
DRAWN BY: JS
CHECKED BY: BE
CADD FILE: PS-WALL.DWG

SCALE: NOTED
DRAWING NO.:
D601
SHEET: 09 OF 09