

July 16, 2019
BOARD OF COUNTY COMMISSIONERS
ORANGE COUNTY, FLORIDA
ADDENDUM NO. 2 / IFB NO. Y19-776-TA
PUMP STATION PACKAGE 22 IMPROVEMENTS

BID OPENING DATE: July 23, 2019 at 2:00 P.M.

This addendum is hereby incorporated into the bid documents of the project referenced above. The following items are clarifications, corrections, additions, deletions and/or revisions to and shall take precedence over the original documents. Additions are indicated by **underlining**, deletions are indicated by ~~strikethrough~~.

A. FRONT END DOCUMENT CHANGES

Not Used

B. SPECIFICATIONS

Not Used

C. DRAWINGS

Not Used

D. CLARIFICATIONS:

1. Q. Sheet 11, Pump station 3337 calls for 6" DIP however, sheet 20 calls for 6" PVC. Are we to use PVC material for this and all stations underground force mains?

A. See revised Drawing C101. Underground force main to transition to PVC as shown on the P drawings.

2. Q. Pump Station 3351 calls for 8" lining of 209.8 lf however this only scales to approx. 73 LF from Manhole 33510046 to MH 3351-01, please confirm we are to only line between these limits and not past MH 33510046.

A. See revised Drawing C201. The limits to be lined are between MH 33510046 and MH 3351-01.

3. Q. Please provide a thickness for Milling and Resurfacing of Pump Station 3390 and also what type of asphalt we are to use for resurfacing.

A. See attached standard roadway mill and resurfacing detail to be included in the drawings.

4. Q. Concrete pad at Pump Station 3325 calls for this to be 6" 4,000 PSI w/fibermesh, however all the other Pump Stations calls for 3,000 PSI, please confirm it is the County's intent to use 4,000 PSI at this pump station for the concrete pad.

A. See revised drawing C501. Concrete pad shall be revised to 3,000 PSI for PS 3325.

5. Q. Please provide flow information (GPM) for each station. Will the discharge be closed and under pressure, if so please let us know what the break in force is (PSI or TDH)?

A. Flow and head criteria is provided in specification section 11305-A.

E. ACKNOWLEDGEMENT OF ADDENDA

1. The Bidder shall acknowledge receipt of this addendum by completing the applicable section in the solicitation or by completion of the acknowledgement information on the addendum. Either form of acknowledgement must be completed and returned not later than the date and time for receipt of proposal.

2. All other terms, conditions and specifications remain the same.

Receipt acknowledged by:

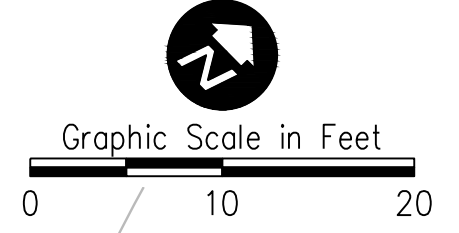
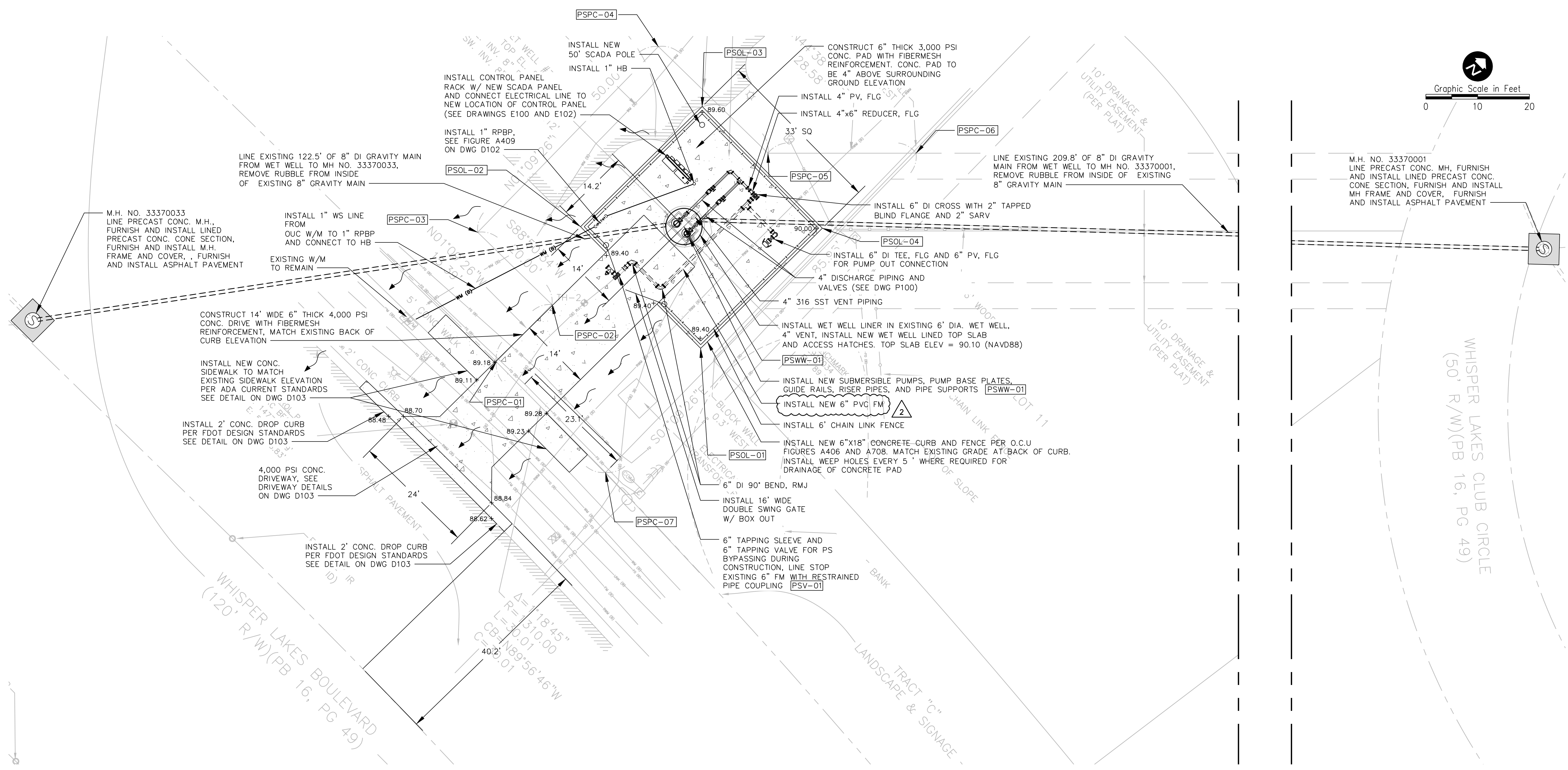
Authorized Signature

Date Signed

Title

Name of Firm

Parent Sheet Set: 1100340C_PKG22PS Rev/Plot by: JAY MILLER
 Rev on: 7/15/2019 7:54 AM
 Individual File Path: R:\Projects\110034 - Orange County R-R Package 22 Pump Stations\Design\Drawings\FinalDesign\C101.dwg



PS 3337 - WHISPER LAKES 7 PROPOSED PLAN



| REV | DATE | DESCRIPTION | BY |
|-----|---------|----------------|-----|
| D | 07/2019 | ADDENDUM 2 | AJM |
| C | 05/2019 | ISSUED FOR BID | AJM |
| B | 10/2018 | 90% DRAWINGS | AJM |
| A | 08/2018 | 60% DRAWINGS | AJM |

| Issue Certification | |
|--|-----|
| Designed | ARS |
| Drawn | AJM |
| Checked | MDP |
| Reviewed | JRV |
| Approved | MDP |
| Melanie D. Peckham, P.E. Florida P.E. No. 66487 | |

| | |
|--------|----------|
| Scale: | 1" = 10' |
|--------|----------|

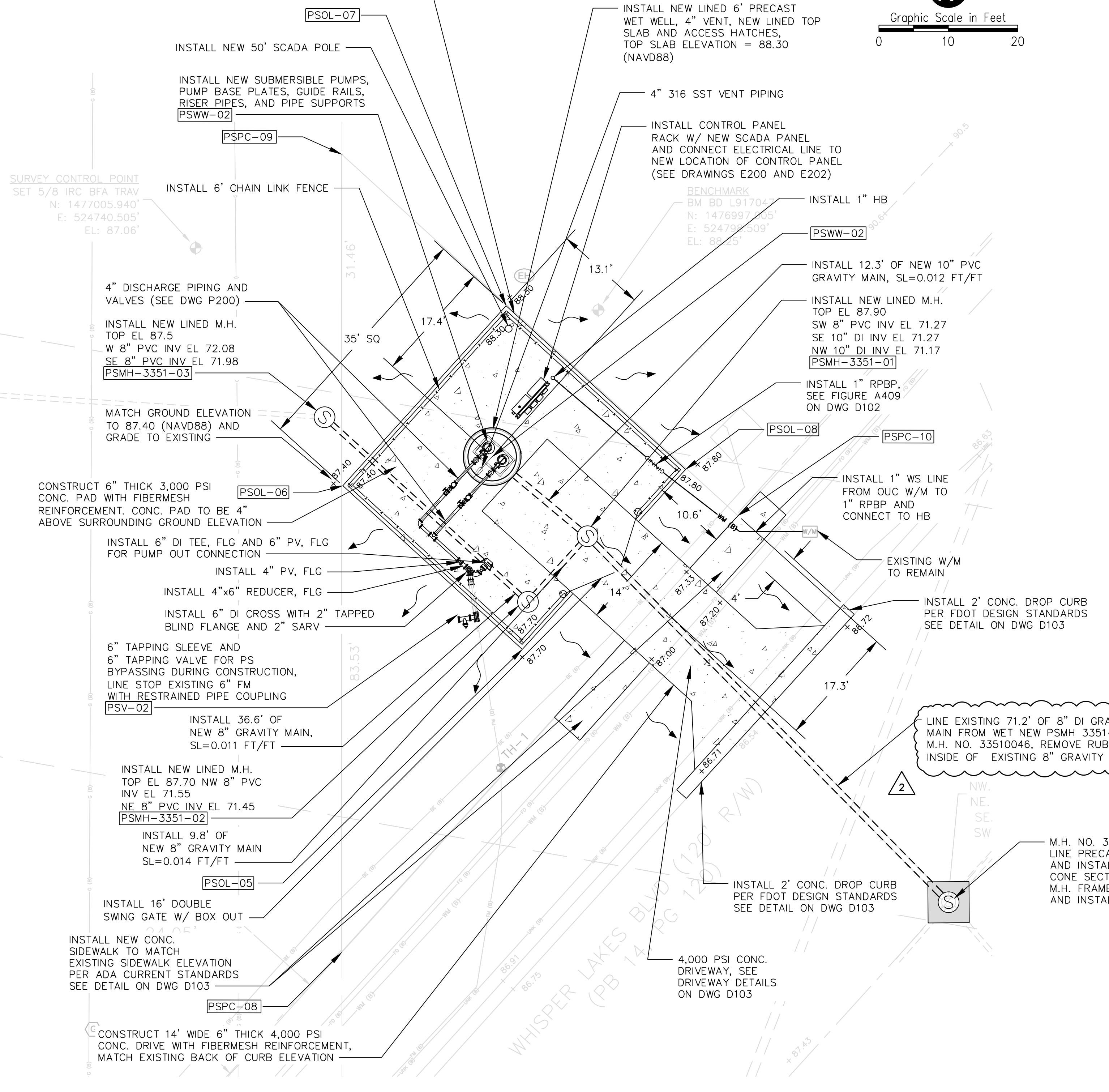
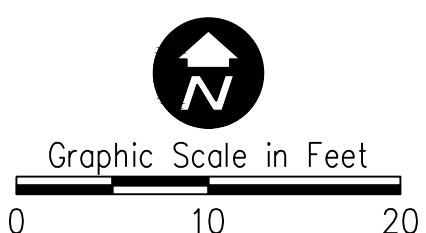
ORANGE COUNTY
 R/R PACKAGE 22 PUMP STATIONS
 CIVIL
PUMP STATION 3337 - WHISPER LAKES 7
 PROPOSED SITE PLAN

| | |
|--------------|----------|
| PROJECT NO.: | 110034 |
| SCALE: | NOTED |
| REVISION: | C |
| DRAWING NO.: | C101 |
| SHEET NO.: | 11 OF 50 |

REISS ENGINEERING, INC.
 1016 SPRING VILLAS PT.
 WINTER SPRINGS, FL 32708
 (407) 679-5358
 CERTIFICATE OF AUTH. 8181

Parent Sheet Set: 1100340C_PKG22PS Rev/Plot by: JAY MILLER
 Rev on: 7/15/2019 7:55 AM
 Individual File Path: R:\Projects\110034 - Orange County R-R Package 22 Pump Stations\Design\Drawings\FinalDesign\C201.dwg

INSTALL NEW 6"x18" CONCRETE CURB AND FENCE PER O.C.U. FIGURES A406 AND A708. MATCH EXISTING GRADE AT BACK OF CURB. INSTALL WEEP HOLES EVERY 5 FT WHERE REQUIRED FOR DRAINAGE OF CONCRETE PAD



PS 3351 - M.H. 33640002

PS 3351 - WHISPER LAKES 4 PROPOSED PLAN



| REV | DATE | DESCRIPTION | BY |
|-----|---------|----------------|-----|
| D | 07/2019 | ADDENDUM 2 | AJM |
| C | 05/2019 | ISSUED FOR BID | AJM |
| B | 10/2018 | 90% DRAWINGS | AJM |
| A | 08/2018 | 60% DRAWINGS | AJM |

| Issue Certification | |
|--------------------------|------------------------|
| Melanie D. Peckham, P.E. | Florida P.E. No. 66487 |

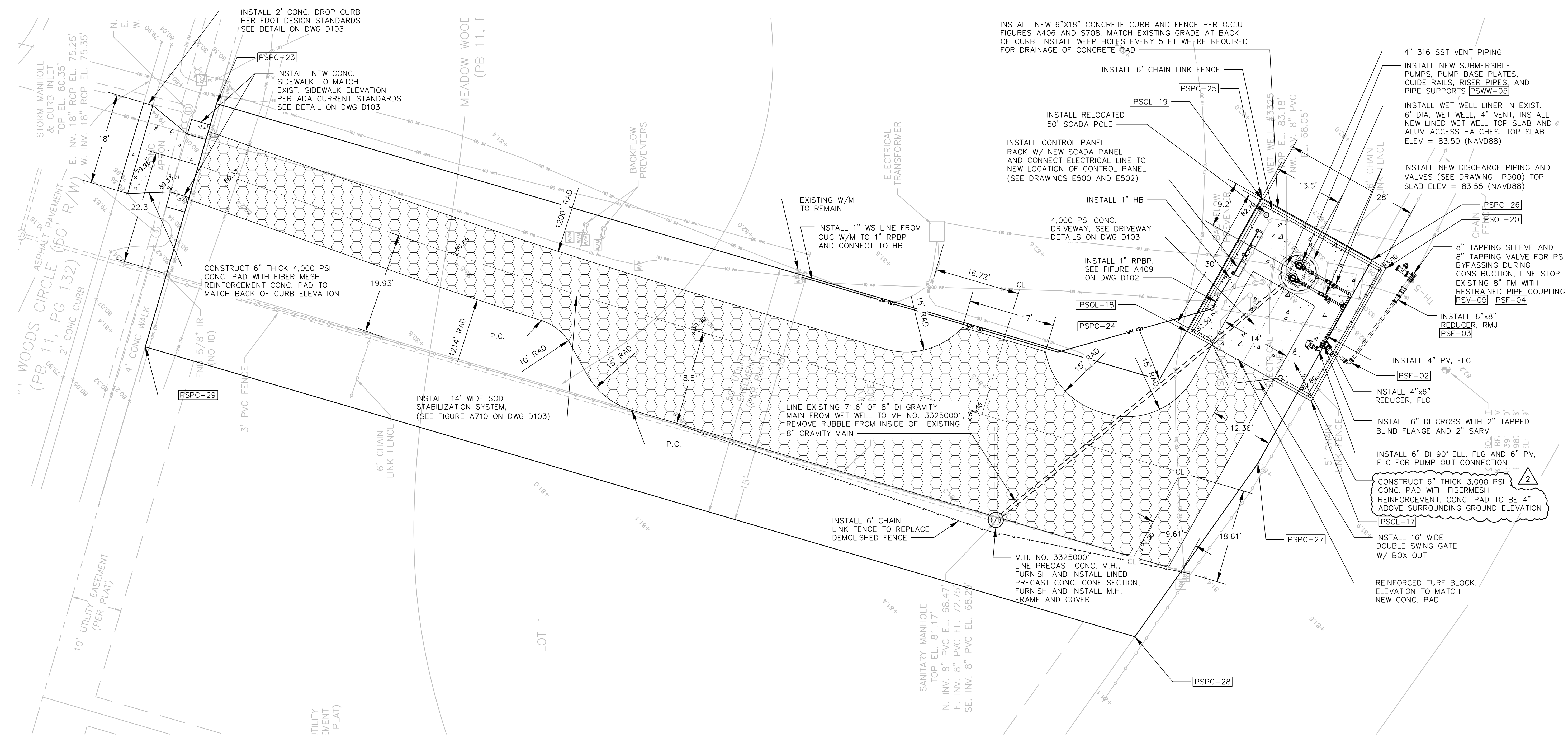
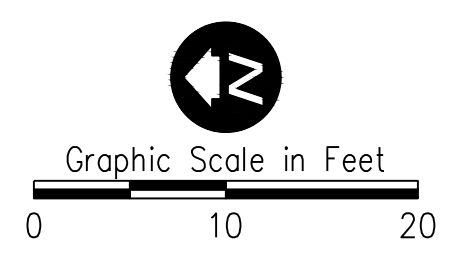
| | |
|----------|-----|
| Designed | ARS |
| Drawn | AJM |
| Checked | MDP |
| Reviewed | JRV |
| Approved | MDP |

ORANGE COUNTY
 R/R PACKAGE 22 PUMP STATIONS
 CIVIL
PUMP STATION 3351 - WHISPER LAKES 4
PROPOSED SITE PLAN

| | |
|---------------------|---------------------|
| PROJECT NO.: 110034 | |
| SCALE: NOTED | REVISION: C |
| DRAWING NO. C201 | SHEET NO.: 13 OF 50 |

REISS ENGINEERING, INC.
 1016 SPRING VILLAS PT.
 WINTER SPRINGS, FL 32708
 (407) 679-5358
 CERTIFICATE OF AUTH. 8181

Rev on: 7/15/2019 7:56 AM Individual File Path: R:\Projects\110034 - Orange County R-R Package 22 Pump Stations\Design\Drawings\FinalDesign\C501.dwg



PS 3325 - MEADOW WOODS 1 PROPOSED PLAN



| REV | DATE | DESCRIPTION | BY |
|-----|---------|----------------|-----|
| D | 07/2019 | ADDENDUM 2 | AJM |
| C | 05/2019 | ISSUED FOR BID | AJM |
| B | 10/2018 | 90% DRAWINGS | AJM |
| A | 08/2018 | 60% DRAWINGS | AJM |

| Issue Certification | |
|--|-----|
| Designed | ARS |
| Drawn | AJM |
| Checked | MDP |
| Reviewed | JRV |
| Approved | MDP |
| Melanie D. Peckham, P.E. Florida P.E. No. 66487 | |

| | |
|-------|-------------------------|
| Scale | LINE IS 1" AT FULL SIZE |
|-------|-------------------------|

ORANGE COUNTY
R/R PACKAGE 22 PUMP STATIONS
CIVIL
PUMP STATION 3325 - MEADOW WOODS 1
PROPOSED SITE PLAN

| | |
|---------------------|---------------------|
| PROJECT NO.: 110034 | |
| SCALE: NOTED | REVISION: C |
| DRAWING NO. C501 | SHEET NO.: 19 OF 50 |

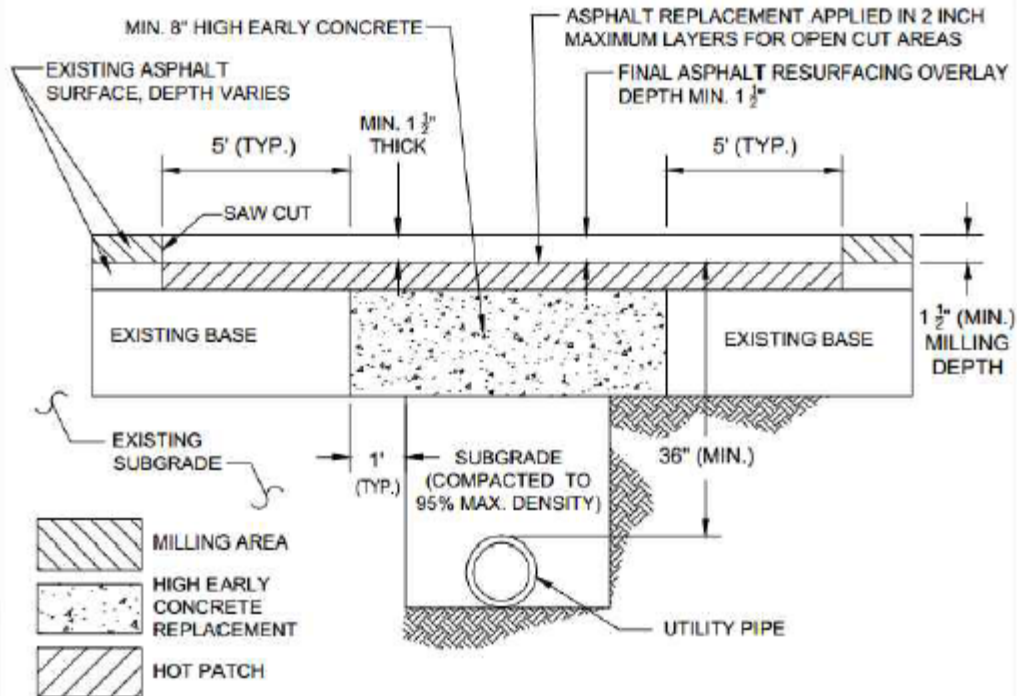
RE

REISS ENGINEERING, INC.
1016 SPRING VILLAS PT.
WINTER SPRINGS, FL 32708
(407) 679-5358
CERTIFICATE OF AUTH. 8181

STANDARD ROADWAY MILL AND RESURFACING WITH OPENCUT CROSS SECTION DETAIL

NOTE

SUBGRADE CUT TO BE COMPACTED TO 95% MAX. DENSITY AS DETERMINED BY AASHTO T - 180. BASE MATERIAL TO BE REPLACED WITH AN EIGHT (8") INCH 3000 PSI HIGH EARLY CONCRETE TO TOP OF EXISTING BASE. CUT AREA TO BE PLATED OR PROTECTED ON DAY OF POUR. EXISTING SURFACE TO BE SAW CUT TO AN AREA FIVE (5') FEET, BEYOND THE BASE CUT.



GENERAL NOTES:

1. BASE REPLACEMENT SHALL BE 3000 PSI HIGH EARLY STRENGTH CONCRETE.
2. ASPHALTIC CONCRETE SURFACE MATERIAL SHALL BE REPLACED WITH THE SAME TYPE OF MATERIAL THAT EXISTED AT THE TIME OF REMOVAL OR AS APPROVED BY THE COUNTY.
3. MINIMUM ASPHALTIC CONCRETE SURFACE OVERLAY THICKNESS SHALL BE (1 1/2") INCH OR AS APPROVED BY THE COUNTY.
4. ALL JOINT CUTS SHALL BE MECHANICALLY SAW-CUT.
5. FLOWABLE FILL MAY BE USED FOR COMPACTED SUBGRADE AND BASE REPLACEMENT WHEN APPROVED BY THE COUNTY.

PAVEMENT RESTORATION

1. CUTS AT INTERSECTIONS OF STREETS GENERALLY REQUIRE A COMPLETE OVERLAY/ RESURFACING TO THE END OF ALL RETURN RADII, AND ALSO TO A POINT TEN (10') FEET BEYOND THE CUT, WHICHEVER IS GREATER.
2. ACTUAL REQUIREMENTS WILL BE AS STATED ON THE APPROVED PERMIT OR AS DIRECTED BY COUNTY INSPECTION PERSONNEL.