

December 5, 2016
BOARD OF COUNTY COMMISSIONERS
ORANGE COUNTY, FLORIDA
Addendum No. 4, IFB Y17-718-CC
DEPUTY JONATHAN "SCOTT" PINE COMMUNITY PARK

Bid Opening Date: December 8, 2016

This addendum is hereby incorporated into the bid documents of the project referenced above. The following items are clarifications, corrections, additions, deletions and/or revisions to, and shall take precedence over, the original documents. Underlining indicates additions, deletions are indicated by ~~strikethrough~~.

A. The bid opening date remains December 8, 2016 at 2:00 P.M.

B. Revision: In Addendum No. 1 dated November 23, 2016, delete pages D-2 through D-7 of the Revised Official Bid Form in its entirety and replace with the attached REVISED PAGES D-2 through D-7.

FAILURE TO SUBMIT THE REVISED SCHEDULE OF PRICES INCLUDED IN THIS ADDENDUM NO. 4 WITH YOUR BID SUBMITTAL SHALL RESULT IN YOUR BID BEING DETERMINED NON-RESPONSIVE.

C. Additions, Deletions and Clarifications:

- 1. Revision:** The following specifications have been revised and are attached:
 - b. SECTION 10 51 13 , dated 12/5/16 – ATHLETIC LOCKERS
 - i. Specification for athletic lockers changed to reflect correct locker type. Lockers have changed to 24"W x 22"D x 72"H open front lockers.
- 2. Revision:** The following drawings have been revised and are attached:
 - a. DRAWING SHEET A101 – OVERALL FLOOR PLAN dated 12/5/16
 - i. Revised layout which includes 48 lockers total in each locker room. Revised layout deletes one CMU chase on the eastern side of each locker room and modifies the CMU chases on the western side of each locker room.
 - b. DRAWING SHEET A121 – DIMENSION PLAN, dated 12/5/16
 - i. Dimensioned layout of locker rooms
 - c. DRAWING SHEET A901 – EXTERIOR DETAILS, dated 12/5/16
 - i. New counter top section at ticket booth
 - d. DRAWING SHEET AS101 – ARCHITECTURAL SITE PLAN, dated 12/5/16
 - i. Revised Keynote 32 28 31.B2. Removed panic hardware note.
 - e. DRAWING SHEET AS113 – SITE DETAILS, dated 12/5/16
 - i. Protection net detail

D. Questions and Answers:

- 1. Question:** 10 51 13 – Athletic Lockers – Please verify the height of 40” for all lockers, perimeter and center of room. Also, note 2.2 A.13 states all “End and Top Finishing Panels” to be ½” thick HDPE material, however, note 15 calls for “Continuous Sloping Tops”. Please clarify which tops the lockers should have.
Answer: All athletic lockers are to have HDPE end and top panels as called for in the specifications and no sloped tops. Replace specification 10 51 13 in its entirety with the attached specification 10 51 13 dated 12/05/2016. Lockers have changed to 24”W x 22”D x 72”H open front lockers. Refer to attached revised locker room layout for revised layout which includes 48 lockers total in each locker room. Revised layout deletes one CMU chase on the eastern side of each locker room and modifies the CMU chases on the western side of each locker room.
- 2. Question:** Per Addendum No. 1, page 1, item 3. Revision, directional bore was deleted from the drawings; however appears on Bid Form Revised D-4 items 6 and 8. Please revise.
Answer: Please see the attached revised bid form, which deletes these items.
- 3. Question:** The force main is for a deflection. How is the force main going to be stopped so the connection can be made? Will the force main be shut off for this operation? Or will it require line stops? If line stops, will there be a pay item for it?
Answer: The OCU 16” PVC force main relocation will be done with fittings. Use line stops to do the connection. Please see the attached revised bid form, which adds the line stops to the utility bid schedule. The following (below) applies to this item (#15) on utility bid schedule.

Reference ID 12.510.xxx Line Stop Assembly (various sizes)

- | |
|--|
| <ol style="list-style-type: none">a. Measurement: Measurement for Line Stopping Assembly shall be made per actual number of line stops satisfactorily furnished and installed to permanently or temporarily stop the flow within the indicated main at the locations shown on the Drawings.b. Payment: Payment for the Line Stopping Assembly shall be made based on the authorized quantity at the unit price indicated in the Bid. Payment of the applicable Contract unit price shall be full compensation for furnishing all labor, materials and equipment necessary to perform a permanent or temporary line stop on an existing main including excavation, sheeting, shoring, bracing, dewatering, backfill, compaction, grading, tapping sleeve, plug, retraining devices, restraint of existing piping in accordance with the County requirements, swabbing, restoration and clean-up and all other items required for a complete, acceptable and operable installation. |
|--|

4. **Question:** Drawing C102 indicates a new 6' Vinyl Coated Chain Link Fence (TYP.) between the 2 double gates on the East end of the Turf Field. All other areas of the track call for 4' Vinyl Coated Chain Link Fence. Please clarify if the 6' note should be 4' and the height of the double gates around the track.
Answer: All fencing abutting (against the track) the track is 4' high including the gates along the same line of fence. All other fencing including within the stadium and site perimeter is 6' High.
5. **Question:** Drawing AS101 indicates 2 double gates with Keynote 32 28 31.B2 16' Double Chain Link Gate, Match Fence Height, Provide Panic Egress Hardware, Refer to Civil for Additional Information. The Civil Drawings do not indicate and details for the Panic Egress Hardware. Please provide additional information and details for the 2 double gates with Panic Egress Hardware.
Answer: Egress Panic hardware requirement will be eliminated from the project. Refer to revised key note 32 28 31.B2 on AS101. Refer to spec section 31 28 31 section 2.4 for all other gate requirements.
6. **Question:** The Chain Link Fence Detail 8 on Drawing C401 Detail 8 indicates Tension Wire at the top of the fabric. The Fence Detail on Drawing C406 indicates a 1 5/8" Top Rail Schedule 20. Please confirm if the Tension Wire or 1 5/8" Top Rail Schedule 20 shall be used.
Answer: Top rail shall be utilized for 4 ft. high fence and tension wire for 6 ft. high fence.
7. **Question:** Specification 26 56 68 Exterior Athletic Lighting Section 1.5 Life Cycle Costs Part J. states the following: Equipment price and total life cycle cost shall be entered separately on bid form. The current bid form does not contain a place for this information to be provided. Please revised the bid form or confirm that the life cycle cost information is not required.
Answer: The intention of specification 26 56 68 section 1.5 is that the supplied product meets or exceeds the performance and cost of ownership of the basis of design throughout the life of the supplied product. Equivalent products and the associated life cycle cost analysis will be reviewed in the shop drawing process.
8. **Question:** Please provide the basis of design for the Grease Trap Interceptor indicated the Sanitary Plan on Drawing P101 Overall Floor – Plumbing and on the Plumbing Fixture Schedule as GT-1 on Drawing P901.
Answer: Basis of design for grease trap will be SCHIER Products with part # PATG-35-LO
9. **Question:** Page C-12, second sentence states, "The Base Bid and Alternates shall reflect the costs for the materials and equipment named or specified only." Please confirm that only named and specified manufactures shall be used at bid time.
Answer: Requests for substitute materials and equipment shall only be evaluated after the Contract is executed. Please review No. 7 of Part C – Instruction to Bidders of the Invitation for Bids. Requests for substitutions will not be considered prior to contract award in accordance with the provision.

10. Question: Please confirm that all bidders shall include in their bid pricing for the “Field Turf USA, Inc.” product as specified in specification 321801.

Answer: Field Turf USA, Inc. is the basis of design for this Specification Section. Bidders are to provide pricing that includes all requirements of the project documents.

11. Question: Please confirm that all bidders shall include in their bid pricing for the “Musco Lighting” product as specified in specification 265668

Answer: Correct.

12. Question: Please indicate what the support structure is that will hold the Stainless Steel Counter Top indicated on Detail 3 on Drawing A101 as Specification 12 36 16.1 in the Ticket Booth. The Drawings and Specifications do not indicate any base cabinets and or counter top legs to support this Stainless Steel Counter Top. Should this Stainless Steel Counter Top indicated be a Stainless Steel Table Work Table, and if so, what size?

Answer: Supports to be per new detail 9/A901. Size support angles for counter depth as shown on plans. Also refer to response on Addendum #2, question 4 and refer to spec section 12 36 16 – Metal Countertops, shelving and tables, paragraphs 1.2-A.1, and 2.2-A.

13. Question: Note 5 on Drawing EL041 Site Plan Lighting indicates that all Poles located in Paved Areas subject to vehicular traffic/parking shall be provided with 30” Concrete base extending 30” AFG, with ½” chamfer and painted safety yellow. Please provide a detail of the 30” Concrete Base including the rebar spacing if required.

Answer: Concrete base indicated on Note 5 of sheet EL041 is no longer required as poles are not embedded concrete.

14. Question: Please confirm that the Concrete Light Pole indicated on Drawing E902 Electrical Details are the poles for the 11 Paved Area Light Poles indicated on EL041 Site Plan – Lighting.

Answer: BASE DETAIL - CONCRETE LIGHT POLE” detail on drawing E902 is the pole for the parking lot.

E. ACKNOWLEDGEMENT OF ADDENDA

- a. The Bidder/Proposer shall acknowledge receipt of this addendum by completing the applicable section in the solicitation or by completion of the acknowledgement information on the addendum. Either form of acknowledgement must be completed and returned not later than the date and time for receipt of the bid or proposal.
- b. All other terms and conditions of the IFB remain the same.
- c. **Receipt acknowledged by:**

Authorized Signature

Date Signed

Title

Name of Firm

**To the Board of County Commissioners
Orange County, Florida**

The Undersigned, hereinafter called "Bidder", having visited the site of the proposed project and familiarized himself with the local conditions, nature and extent of the work, and having examined carefully the Contract Form, General Conditions, Supplementary Conditions, Plans and Specifications and other Contract Documents, with the Bond requirements herein, proposes to furnish all labor, materials, equipment and other items, facilities and services for the proper execution and completion of: **DEPUTY JONATHAN "SCOTT" PINE COMMUNITY PARK** in full accordance with the drawings and specifications prepared in accordance with the Contract Documents and, if awarded the Contract, to complete the said work within the time limits specified for the following LUMP SUM BID with UNIT PRICING COMPONENTS.

It is understood that there are unit price components to the Contract and the resultant Contract will contain estimated quantities, unit prices, extended totals and that the LUMP SUM BID with UNIT PRICING COMPONENTS is the sum of the LUMP SUM BID, Page D-2, and all pay item totals from the schedule of prices, Page D-4 through D-7.

The Contract resulting from this solicitation is based on a LUMP SUM BID with UNIT PRICING COMPONENTS with estimated quantities. The contractor shall only be paid for materials installed in the work in accordance with the applicable unit prices for the specific work element (line item). No payment shall be made for excess materials delivered to the jobsite and not incorporated into the work. Therefore, it shall be the contractor's responsibility to determine the quantities of materials necessary to perform the project to its completion.

001 BASE BID (LUMP SUM):

_____ DOLLARS
(In Words)

\$ _____

002 UTILITIES (ESTIMATED BID):

_____ DOLLARS
(In Words)

\$ _____

003 ROADWAY (ESTIMATED BID):

_____ DOLLARS
(In Words)

\$ _____

TOTAL BID AMOUNT: (001 + 002 + 003)

_____ DOLLARS
(In Words)

\$ _____

In the event the Contract is awarded to this Bidder, he/she will enter into a formal written agreement with the County in accordance with the accepted bid within ten (10) calendar days after said Contract is submitted to him/her and will furnish to the County a Contract Payment and Performance Bond with good and sufficient sureties, satisfactory to the County, in the amount of 100% of the accepted bid. The Bidder further agrees that in the event of the Bidder's default or breach of any of the agreements of this proposal, the said bid deposit shall be forfeited as liquidated damages.

Failure of the Bidder to provide pricing for all unit priced items and/or the Base Bid and ALL requested additive/deductive bid items, or alternate bids shall be cause for rejection of the bid as non-responsive

**SCHEDULE OF PRICES
UTILITY PAY ITEMS
REVISED**

REF. NO.	PAY ITEM NO	ITEM DESCRIPTION	UNIT	Estimated Quantity	UNIT PRICE	TOTAL COST
1	1001	MOBILIZATION – not to exceed 5% of the total of all Line Items 2-15.	LS	1		
2	1080	FORCEMAIN 4" PLUG VALVE	EA	1		
3	1050	FORCEMAIN 4" PVC	LF	6		
4	1080	FORCEMAIN TAPPING VALVE 4X16	EA	1		
5	1080	RECLAIM WATER TAPPING VALVE 4X24	EA	1		
6	1080	WATER TAPPING VALVE 8X20	EA	1		
7	1644	FIRE HYDRANT ASSEMBLY	EA	1		
8	U2.01	REPLACE EXIST. 24" RWM VALVE BOX AND ADJUST TO FINAL GRADE	EA	1		
9	U2.02	OFFSET AIR RELEASE VALVE ASSEMBLY (RWM)	EA	1		
10	U3.01	REPLACE EXIST 16" PLUG VALVE BOX AND ADJUST TO FINAL GRADE	EA	1		
11	U3.02	16" PVC FORCE MAIN	LF	30		
12	U3.03	REMOVAL OF EXISTING 16" PVC FORCE MAIN	LF	25		
13	U3.04	OFFSET AIR RELEASE VALVE ASSEMBLY (FM)	EA	1		
14	U3.05	PROJECT RECORD DOCUMENTS	LS	1		
15	U3.06	16" LINE STOP	EA	2		

002 ESTIMATED BID FOR UTILITY PAY ITEMS:

\$ _____
(Reference numbers 1 through 15)

**SCHEDULE OF PRICES
ROADWAY PAY ITEMS
REVISED**

REF. NO.	PAY ITEM NO	ITEM DESCRIPTION	UNIT	Estimated Quantity	UNIT PRICE	TOTAL COST
16	101-1	MOBILIZATION – 10% OF LINE ITEMS 17-51	LS	1		
17	102-1	MAINTENANCE OF TRAFFIC	LS	1		
18	104-14	PREVENTION, CONTROL AND ABATEMENT OF EROSION AND WATER POLLUTION	LS	1		
19	110-1-1	CLEARING & GRUBBING	LS	1		
20	120-9	EXCAVATION, EMBANKMENT AND GRADING	LS	1		
21	160-4	TYPE "B" STABILIZATION (12") (MIN. LBR 40)	SY	9,833		
22	270-6	6" SOIL CEMENT BASE COURSE (300 PSI)	SY	1,884		
23	270-12	12" SOIL CEMENT BASE COURSE (300 PSI)	SY	6,770		
24	334-1-13	TYPE SP-12.5 ASPHALTIC CONCRETE (2.5") (TRAFFIC LEVEL C)	SY	6,770		
25	337-7-43	ASPHALTIC CONCRETE FRICTION COURSE (1.5" FC-12.5) (TRAFFIC LEVEL C) (INCL. TACK COAT)	SY	8,652		
26	400-1-2	CONCRETE CLASS I, ENDWALLS	CY	1.09		
27	425-1-521	INLETS, DITCH BOTTOM, TYPE C, <10'	EA	2		
28	430-94-1	DESILTING PIPE, 0 - 24"	LF	219		
29	430-175-118	PIPE CULVERT, STEEL REINFORCED CONCRETE, CLASS III, ROUND, 18"	LF	16		
30	430-175-215	PIPE CULVERT, STEEL REINFORCED CONCRETE, CLASS IV, ELLIPTICAL, 12"X18"	LF	32		
31	430-982-125	MITERED END SECTION, ROUND, 18" CD	EA	1		
32	430-984-623	MITERED END SECTION, ELLIPTICAL, 12"X18" SD	EA	2		

33	515-2-211	PEDESTRIAN/BICYCLE RAILING, GALVANIZED STEEL, 42" TYPE 1 (PICKET INFILL PANEL)	LF	18		
34	520-1-8	CONCRETE CURB & GUTTER, SPECIAL (RIBBON)	LF	93		
35	522-1	SIDEWALK CONCRETE, 4" THICK	SY	393		
36	524-1-29	CONCRETE DITCH PAVEMENT, 4", REINFORCED	SY	75		
37	570-1-2	PERFORMANCE TURF (SOD)	SY	6,249		
38	603-1	SIGNALIZATION	LS	1		
39	700-1-12	SINGLE POST SIGN, F&I GM, 12-20 SF	AS	4		
40	706-3-1	REFLECTIVE PAVEMENT MARKERS (Y/Y)	EA	176		
41	706-3-2	REFLECTIVE PAVEMENT MARKERS (W/R)	EA	33		
42	710-90	PAINTED PAVEMENT MARKINGS, FINAL SURFACE	LS	1		
43	711-11-123	THERMOPLASTIC, WHITE, SOLID FOR CROSSWALK AND ROUNDABOUT, 12"	LF	132		
44	711-11-125	THERMOPLASTIC, WHITE, SOLID FOR STOP LINE AND CROSSWALK, 24"	LF	97		
45	711-11-141	THERMOPLASTIC, WHITE, EXTENSION, 6" (6/10)	GM	0.036		
46	711-11-170	THERMOPLASTIC, ARROWS (RIGHT) & (LEFT)	EA	8		
47	711-11-224	THERMOPLASTIC, YELLOW, SOLID FOR DIAGONALS AND CHEVRONS, 18"	LF	280		
48	711-11-241	THERMOPLASTIC, YELLOW, GUIDE LINE, 6" (2/4)	GM	0.021		

49	711-16-101	THERMOPLASTIC, STANDARD - OTHER, WHITE, SOLID, 6"	GM	0.783		
50	711-16-201	THERMOPLASTIC, STANDARD - OTHER, YELLOW, SOLID, 6"	GM	1.010		
51	900-1	AS-BUILT PLANS	LS	1		
52	900-2	INDEMNIFICATION	LS	1	\$100	\$100

003. ESTIMATED BASE BID FOR ROADWAY:

\$ _____
(Reference Numbers 16 through 52)

SECTION 10 51 13 - ATHLETIC LOCKERS

PART 1 - GENERAL

1.1 RELATED DOCUMENTS

- A. Drawings and general provisions of the Contract, including General and Supplementary Conditions and Division 01 Specification Sections, apply to this Section.

1.2 SUMMARY

- A. This Section Includes:
 - 1. Lockers.
 - 2. Locker Benches.

1.3 SUBMITTALS

- A. Product Data: Include construction details, material descriptions, dimensions of individual components and profiles, and finishes for each type of locker.
- B. Shop Drawings: Include plans, elevations, sections, details, and attachments to other Work.
 - 1. Include type of material, gauges of metal, reinforcement, closures and fillers, finishing strips, sloping tops, end finish panels and other details of construction. Identify methods and details of attachment, layout of the lockers, and devices to be furnished by others.
 - 2. Include locker-numbering sequence.
- C. Samples for Initial Selection: Manufacturer's color charts showing the full range of colors available for units with factory-applied color finishes.
- D. Maintenance Data: For adjusting, repairing, and replacing locker doors and latching mechanisms to include in maintenance manuals specified in Division 1.
- E. Warranty: Sample of special warranty.

1.4 QUALITY ASSURANCE

- A. Installer Qualifications: When used with an entity, "experienced" means having successfully completed a minimum of 5 projects similar in size and scope to this Project; being familiar with special requirements indicated; and having complied with requirements of authorities having jurisdiction.
- B. Manufacturer Qualifications: A firm experienced in manufacturing products or systems similar to those indicated for this Project and with a record of successful in-service performance, as well as sufficient production capacity to produce required units.

C. Pre-installation Conference:

1. Conduct conference at Project site to comply with requirements in Division 01 Section "Project Management and Coordination".
2. Installer shall review sequences of locker type delivery and installation and be familiar with all locker features and accessories.

1.5 DELIVERY, STORAGE, AND HANDLING

- A. Do not deliver lockers until spaces to receive them are clean, dry, and ready for locker installation.
- B. Protect lockers from damage during delivery, handling, storage, and installation.

1.6 WARRANTY

- A. Special Warranty: Manufacturer's standard form in which manufacturer agrees to repair or replace components of metal lockers that fail in materials or workmanship, excluding finish, within specified warranty period.
 1. Failures include, but are not limited to, the following:
 - a. Structural failures.
 - b. Faulty operation of latches and other door hardware.
 2. Damage from deliberate destruction and vandalism is excluded.
 3. Warranty Period for All-Welded Metal Lockers: Lifetime from date of Substantial Completion.

PART 2 - PRODUCTS

2.1 MANUFACTURERS

- A. Acceptable Manufacturers: Provide lockers by one of the following:
 1. Art Metal Products
 2. ASI Storage Solutions, Inc.
 3. DeBourgh All American Lockers
 4. Hallowell
 5. List Industries, Inc.
 6. Lyon Metal Products
 7. Penco Products, Inc.
 8. Republic Storage Systems Company

2.2 LOCKERS

A. Athletic Lockers:

1. Athletic Locker Types: Open front with perforated sides providing a fully ventilated space for storage of athletic equipment. Lockers shall be pre-assembled of welded construction in multiple column units to meet job conditions. Lockers to be installed in the field by bolting units together.
 - a. Size: 24"W x 22"D x 72"H
2. Materials: Sheet steel used in fabrication shall be galvanized, prime grade, free from scale and imperfections. Hooks and rods must be zinc plated. Installation hardware to be zinc plated. Locker construction shall be fully welded type.
3. Locker Frame: 16 gauge formed channel. Intermembering parts to be mortised and tenoned and electrically welded together in a rigid assembly capable of resisting strains.
4. Locker Body: Locker body components shall be made of cold rolled steel specially formed for added strength and rigidity and to ensure tight joints at fastening points. Tops, bottoms and sides shall be 16 gauge. Bottoms have two reinforcement channels for added strength. Backs shall be 18 gauge.
 - a. Ventilation: Side panels are to be perforated with diamond-shaped openings unless otherwise specified.
5. Locker Shelf: 16 gauge with four sides formed to 90 degrees, the front edge shall have a second bend.
6. Flat Tops and Bottoms: Shall be formed from 16 gauge cold rolled sheet steel. Tops to receive solid plastic cover as indicated on drawings.
7. Hooks and Rods: Each locker is provided with a set of rod holders, one coat rod and two single prong hooks (to be fastened to the back panel).
8. Number Plates: Each locker opening shall have an aluminum number plate with 3/8 inch high numerals, riveted to door at time of installation. Numbering system will be provided at a later date.
9. Finish: Units shall be thoroughly cleaned, given a bonding and rust inhibitive treatment, electrostatically sprayed with a heavy coat of high quality enamel on epoxy, then baked at 300 325 degrees F.
10. Provide fillers, trim, and necessary accessories.
11. Provide solid end panels with minimum penetrations at exposed ends of locker rows and standard solid end panels at unexposed locker ends and inside corners.
12. Opening mechanism for handicapped lockers shall be in strict accordance with ADA Accessibility requirements.
13. End and Top Finishing Panels: 1/2" thick High Density Polyethylene (HDPE), containing a minimum of 10% recycled material which is waterproof, impact resistant, containing a self-lubricating Poly-Glaze "280" surface that resists marking with pens, pencils, lipstick, and other writing or marking utensils.

B. Locker Benches

1. Bench Tops: Manufacturer's standard 1-piece units of the following materials minimum 1-1/4" thick with rounded corners and edges.
 - a. Laminated from all white clear northern hard maple with one (1) coat of deep penetrating hot sealer and two (2) coats of heavy body high impact hydraulically applied lacquer. Lengths shall be in 1' increments from 3' through 15'.
 - b. Sizes: As Indicated.

2. Fixed Pedestals: Manufacturer's standard supports, with predrilled fastener holes for attaching bench top and anchoring to floor.
 - a. Cast Iron Pedestal: 1-1/2" diameter with 6" top with cast aluminum base and concealed anchoring to floor, manufacturer's standard color.
 - b. Stainless Steel Pedestal: Fabricated from 0.0747 in. thick unfinished stainless steel, 2-piece design allowing concealment of fasteners, top and bottom.

PART 3 - EXECUTION

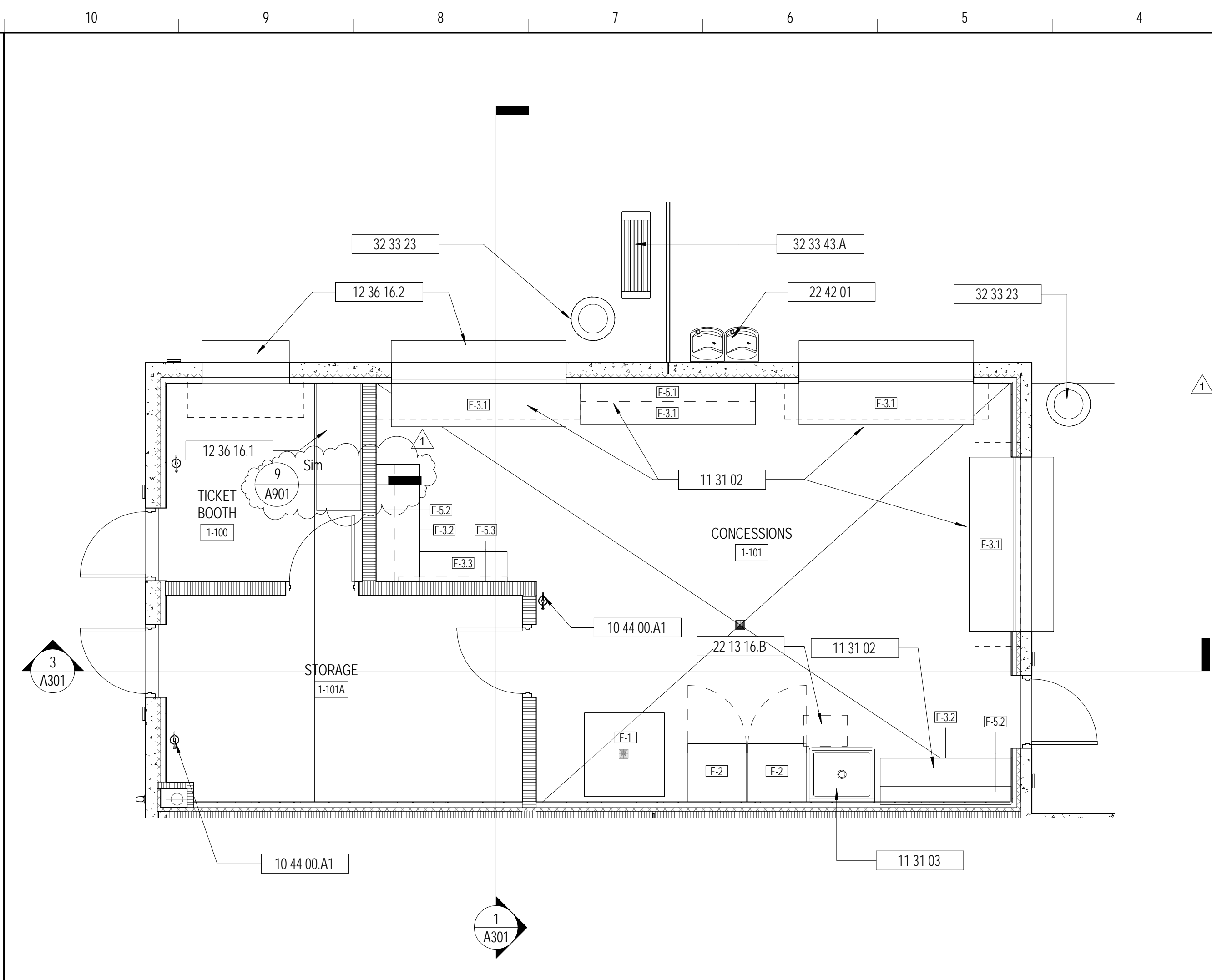
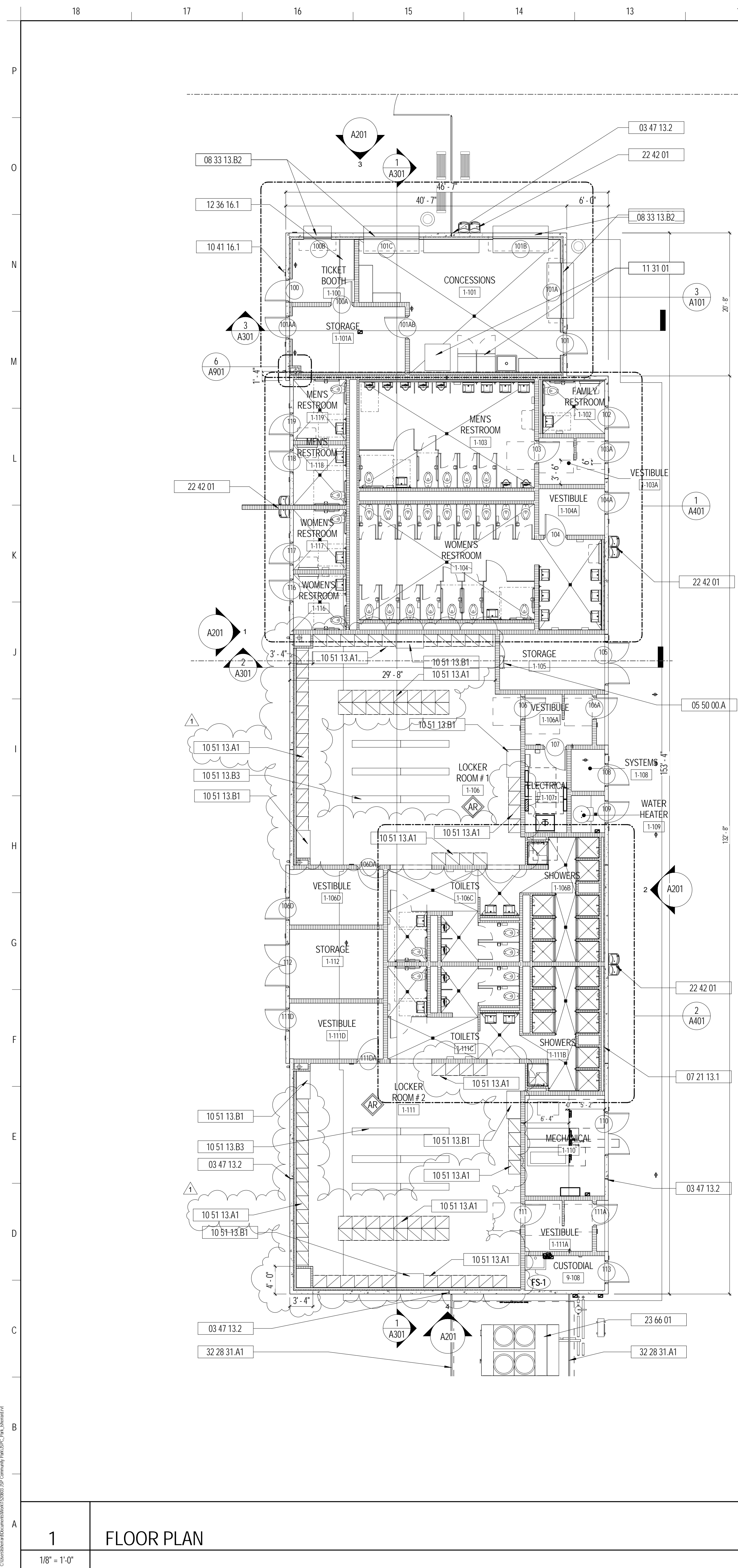
3.1 INSTALLATION

- A. Install metal lockers and accessories level, plumb, rigid, and flush according to manufacturer's written instructions.
- B. Knock down lockers shall be assembled off-site at locker manufacturer's facility.
- C. Anchor lockers to floors and walls at intervals recommended by manufacturer, but not more than 36 inches on center. Install anchors through backup reinforcing plates where necessary to avoid metal distortion, using concealed fasteners.
- D. Attach sloping top units to lockers, with closures at exposed ends.
- E. Attach finished end panels with fasteners only at perimeter to conceal exposed ends of nonrecessed lockers.

3.2 ADJUSTING, CLEANING, AND PROTECTION

- A. Adjust doors and latches to operate easily without binding. Check every locker and verify that integral locking devices operate properly and that all accessories have been installed.
- B. Clean interior and exposed exterior surfaces and polish nonferrous-metal surfaces.
- C. Protect lockers from damage, abuse, dust, dirt, stain, or paint. Do not permit locker use during construction.
- D. Touch up marred finishes, or replace locker units that cannot be restored to factory-finished appearance. Use only materials and procedures furnished by locker manufacturer.
- E. Provide final protection and maintain conditions that ensure that metal lockers are without damage or deterioration at the time of Substantial Completion.

END OF SECTION 10 51 13



3 ENLARGED CONCESSIONS PLAN
1/4" = 1'-0"

PLAN GENERAL NOTES

- REFER TO G001 FOR WALL TYPES AND PARTITION TYPES.
- REFER TO G010 FOR LIFE SAFETY & CODE INFORMATION.

KEYNOTES LEGEND

KEYNOTE	DESCRIPTION
03 47 13.2	TILT UP PANEL JOINT, TYP.
05 50 00.A	VERTICAL METAL LADDER
07 21 13.1	2" SEMI RIGID BOARD INSULATION, MIN. R-5.7
08 33 13.B2	COILING COUNTER DOOR WITH CRANK, REFER TO SCHEDULE
10 41 16.1	SECURITY LOCK BOX
10 44 00.A1	FIRE EXTINGUISHER
10 51 13.A1	OPEN FRONT ATHLETIC LOCKERS
10 51 13.B1	ADA LOCKER BENCH, 24" X 48"
10 51 13.B3	LOCKER BENCH, 12" X 84"
11 31 01	FOODSERVICE EQUIPMENT, AS SCHEDULE
11 31 02	FOOD SERVICE STAINLESS STEEL TABLE
11 31 03	SERVICE SINK S.S. UNIT
12 36 16.1	STAINLESS STEEL COUNTER TOP
12 36 16.2	STAINLESS STEEL SERVICE COUNTER TOP
22 13 16.B	GREASE TRAP IN SLAB, REFER TO PLUMBING, COORDINATE WITH STRUCTURE
22 42 01	DRINKING FOUNTAINS, SEE PLUMBING
23 66 01	AIR COOLED LIQUID CHILLER, REFER TO MECHANICAL
32 28 31.A1	CHAIN LINK FENCE, REFER TO CIVIL
32 33 23	SITE TRASH RECEPTACLE, REFER TO CIVIL
32 33 43.A	SITE BENCH, REFER TO CIVIL

CONCESSION EQUIPMENT SCHEDULE

TAG #	FIXTURE OR ACCESSORY	MANUFACTURER	MODEL	COMMENTS
F-1	ICE MAKER	SEE SPECS	SEE SPECS	
F-2	COOLER	BOD: TRUE MAN.	T-49G-LD	
F-3.1	SS. WORK TABLE, 2' X 8'	BOD: EAGLE	T2496GTE	
F-3.2	SS. WORK TABLE, 2' X 6'	BOD: EAGLE	T2472GTE	
F-3.3	SS. WORK TABLE, 2' X 4'	BOD: EAGLE	T2448GTE	
F-5.1	WALL MOUNTED SHELF	BOD: EAGLE	WS1084-14/13	
F-5.2	WALL MOUNTED SHELF	BOD: EAGLE	WS1072-14/13	
F-5.3	WALL MOUNTED SHELF	BOD: EAGLE	WS1060-14/13	

* MODEL # SHOWN ON SCHEDULE REPRESENTS BASIS OF DESIGN, REFER TO SPECIFICATION FOR ADDITIONAL ACCEPTABLE MANUFACTURER.

SCHENKELSHULTZ
ARCHITECTURE

200 E. ROBINSON STREET, SUITE 300
ORLANDO, FLORIDA 32801
voice 407-872-3322
fax 407-872-3303
schenkelshultz.com
SS Lic. No. AA-C000937

CONFIDENTIAL COPYRIGHT 2014 SCHENKEL & SHULTZ, INC.
SEE WWW.SCHENKELSHULTZ.COM FOR POLICY AND INFORMATION

comm no.: 1520803
drawn: LMS
checked: DG

Revision Schedule		
No.	Description	Date

JONATHAN "SCOTT" PINE COMMUNITY PARK

7199 FICQUETTE ROAD
WINDERMERE, FL 34786

ORANGE COUNTY
201 S. ROSALIND AVENUE
ORLANDO, FLORIDA 32801

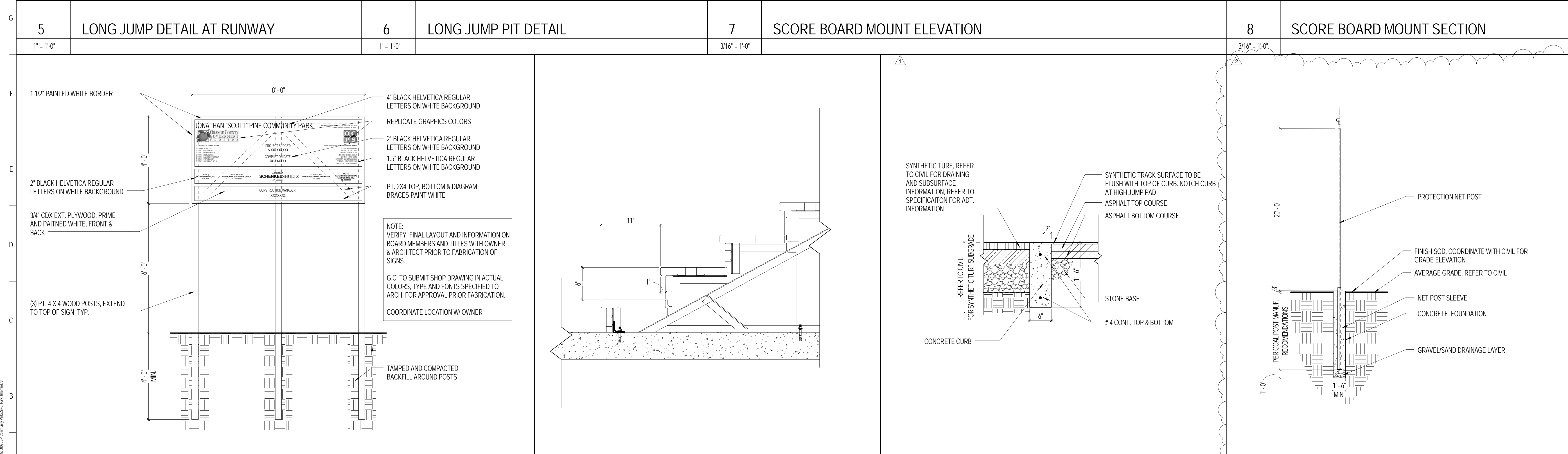
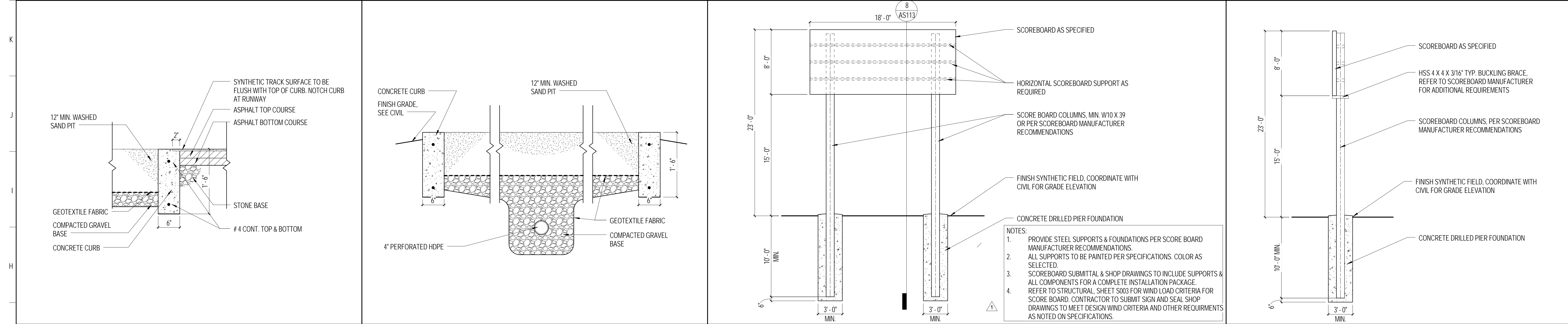
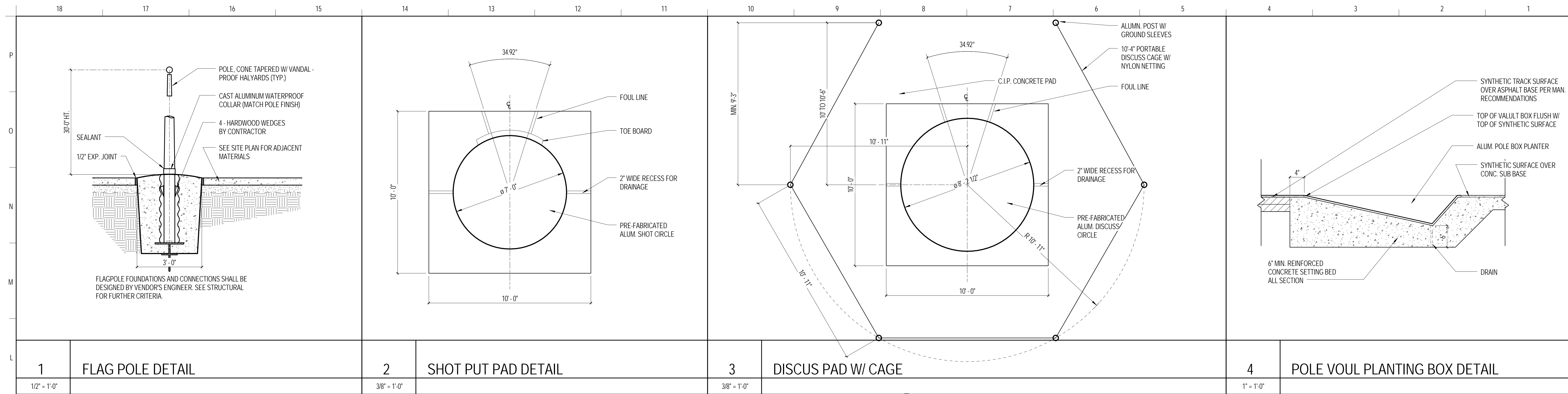
OVERALL FLOOR PLAN

A101

Submitted: PERMIT SET
Issue Date: 09/06/2016

15/09/2016 10:28:18 AM
C:\Users\jshultz\Documents\1520803\1520803.dwg - Jonathan Pine Community Park - Overall

RELEASED FOR CONSTRUCTION



SCHENKELSHULTZ
 ARCHITECTURE

200 E. ROBINSON STREET, SUITE 300
 ORLANDO, FLORIDA 32801
 voice 407-872-3322
 fax 407-872-3303
 schenkelshultz.com
 SS Lic. No. -AA-C000937

CONFIDENTIAL COPYRIGHT 2014 SCHENKEL & SHULTZ, INC.
 SEE WWW.SCHENKELSHULTZ.COM FOR POLICY AND INFORMATION

comm no.: 1520803
 drawn LMS
 checked DG

SEAL

ARCHITECTURAL
 LILIAN M. SHERBARD
 APPROVED
 11/17/2016

Revision Schedule		
No.	Description	Date
1	ISSUE FOR PERMIT SET	11/17/2016
2	ISSUE FOR CONSTRUCTION	09/06/2016

JONATHAN "SCOTT" PINE COMMUNITY PARK

7199 FICQUETTE ROAD
 WINDERMERE, FL 34786

ORANGE COUNTY
 201 S. ROSALIND AVENUE
 ORLANDO, FLORIDA 32801

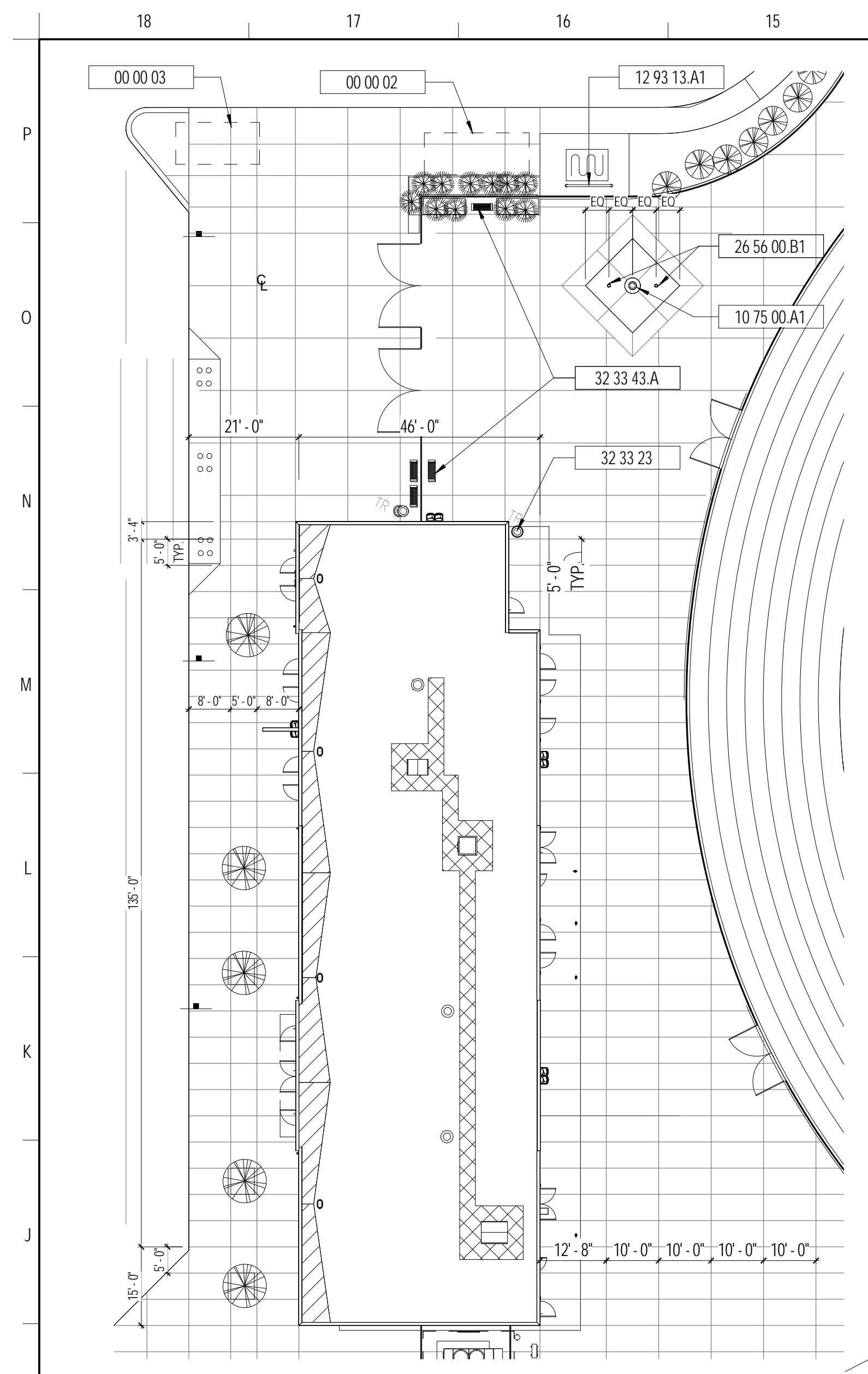
SITE DETAILS

AS113

Submitted: PERMIT SET
 Issue Date: 09/06/2016

RELEASED FOR CONSTRUCTION

1500001 12/17/16
 C:\Users\lms\Documents\1500001\1500001.dwg - 10/17/2016 10:45:00 AM

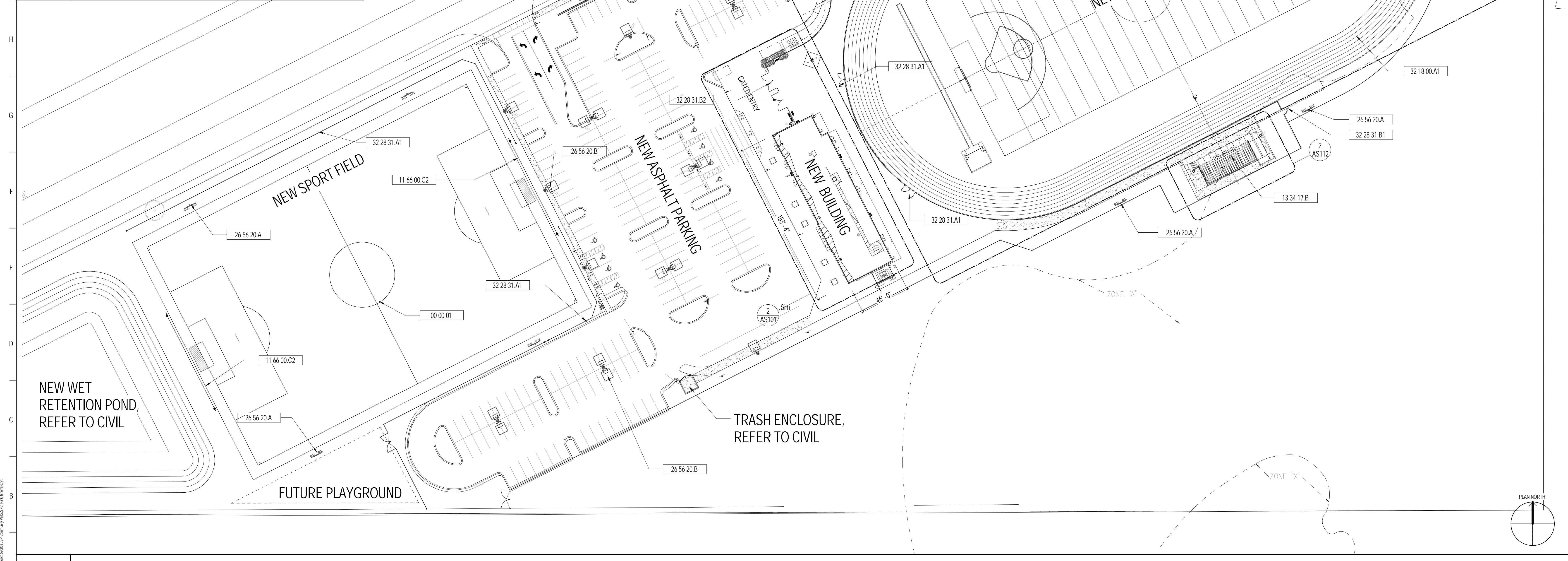


3 ENLARGED SITE PLAN - CONTROL JOINT PATTERN AT TOWER
1" = 20'-0"



2 ENLARGED SITE PLAN
1" = 20'-0"

KEYNOTE	DESCRIPTION
00 00 01	SOCCER FIELD. REFER TO CIVIL
00 00 02	PUBLIC ART OPTION AREA 1
00 00 03	PUBLIC ART OPTION AREA 2
03 15 00.5	CONTROL JOINT, TYP.
10 14 00.C1	MARQUEE SIGN, PROVIDED BY ORANGE COUNTY PARKS & RECREATION, N.I.C.
10 75 00.A1	FLAGPOLE
11 66 00.A1	SHOT PUT AREA
11 66 00.A2	DISCUSS AREA WITH CAGE
11 66 00.A3	SHORT & LONG JUMP
11 66 00.B1	FOOTBALL GOAL POST
11 66 00.C2	GOAL PROTECTION NET
11 68 43.A	POLE MOUNTED SCORE BOARD. PROVIDE COMPLETE SYSTEM, INCLUDING POLE, FOUNDATION AS REQUIRED BY MANUFACTURER
12 93 13.A1	BICYCLE RACK. REFER TO CIVIL
13 34 17.A	ALUMINUM HOME BLEACHERS w PRESS BOX. MIN. CAPACITY 1,000 SEATS
13 34 17.B	ALUMINUM VISITORS BLEACHERS. MIN. CAPACITY 250 SEATS
26 56 00.B1	IN-GROUND LIGHT. REFER TO ELECTRICAL
26 56 20.A	SPORTS LIGHTING. REFER TO ELECTRICAL
26 56 20.B	PARKING LIGHTING. REFER TO ELECTRICAL
32 18 00.A1	RUBBER TRACK AND MULTIPURPOSE FIELD WITH ARTIFICIAL TURF
32 28 31.A1	CHAIN LINK FENCE. REFER TO CIVIL
32 28 31.B1	CHAIN LINK GATE. REFER TO CIVIL
32 28 31.B2	18' DOUBLE CHAIN LINK GATE. MATCH FENCE HEIGHT. REFER TO CIVIL FOR ADDITIONAL INFORMATION
32 33 23	SITE TRASH RECEPTACLE. REFER TO CIVIL
32 33 43.A	SITE BENCH. REFER TO CIVIL



1 ARCHITECTURAL SITE PLAN
1" = 40'-0"

SCHENKELSHULTZ
ARCHITECTURE

200 E. ROBINSON STREET, SUITE 300
ORLANDO, FLORIDA 32801
voice: 407-872-3322
fax: 407-872-3303
schenkelshultz.com
SS Lic. No. -AA-C000937

CONFIDENTIAL. COPYRIGHT 2014 SCHENKEL & SHULTZ, INC.
SEE WWW.SCHENKELSHULTZ.COM FOR POLICY AND INFORMATION

comm no.: 1520803
drawn: LMS
checked: DG

Revision Schedule		
No.	Description	Date
1	ISSUANCE	11/11/2014
2	ISSUANCE	10/29/2014

JONATHAN "SCOTT" PINE COMMUNITY PARK

7199 FICQUETTE ROAD
WINDERMERE, FL 34786

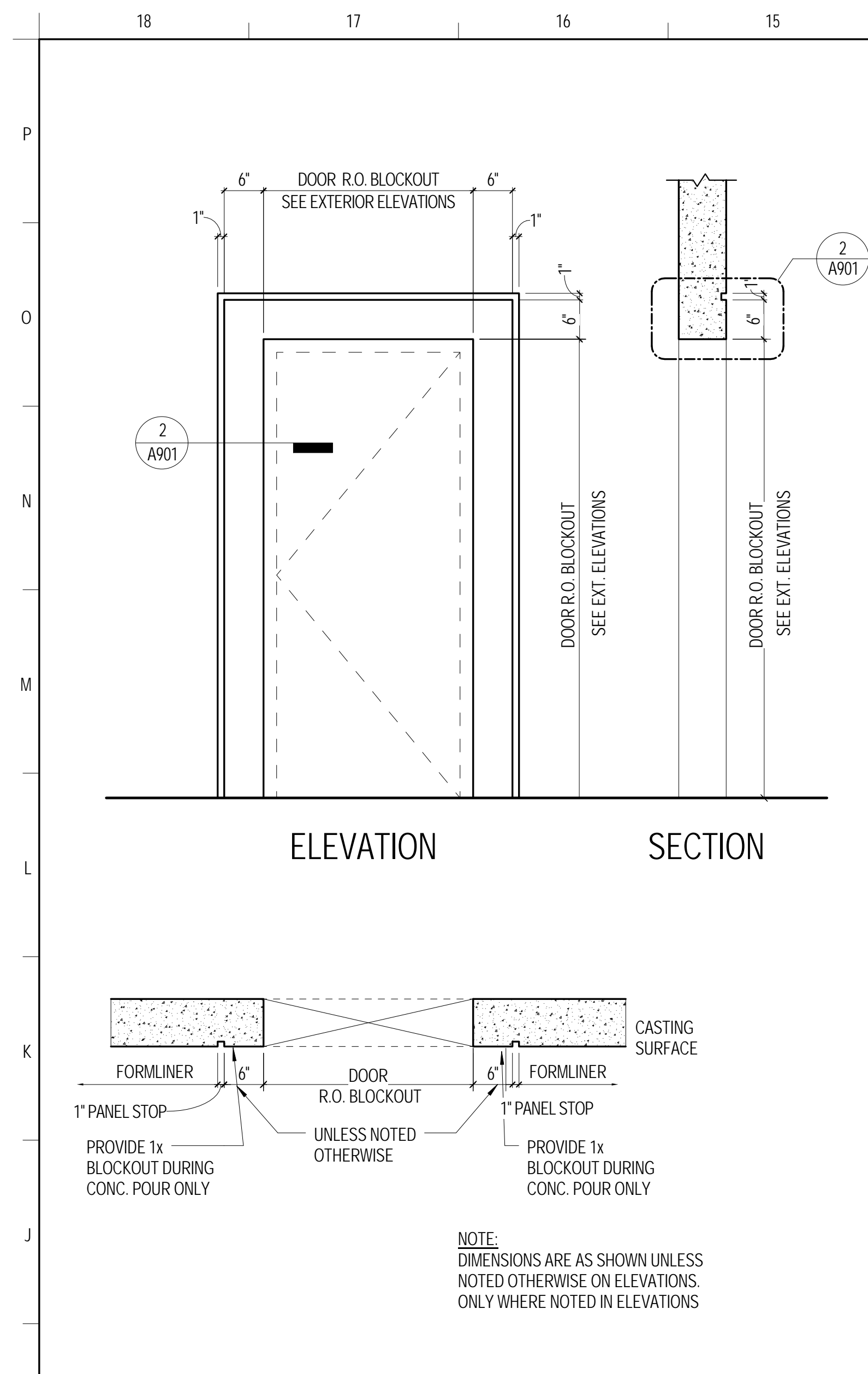
ORANGE COUNTY
201 S. ROSALIND AVENUE
ORLANDO, FLORIDA 32801

ARCHITECTURAL SITE PLAN

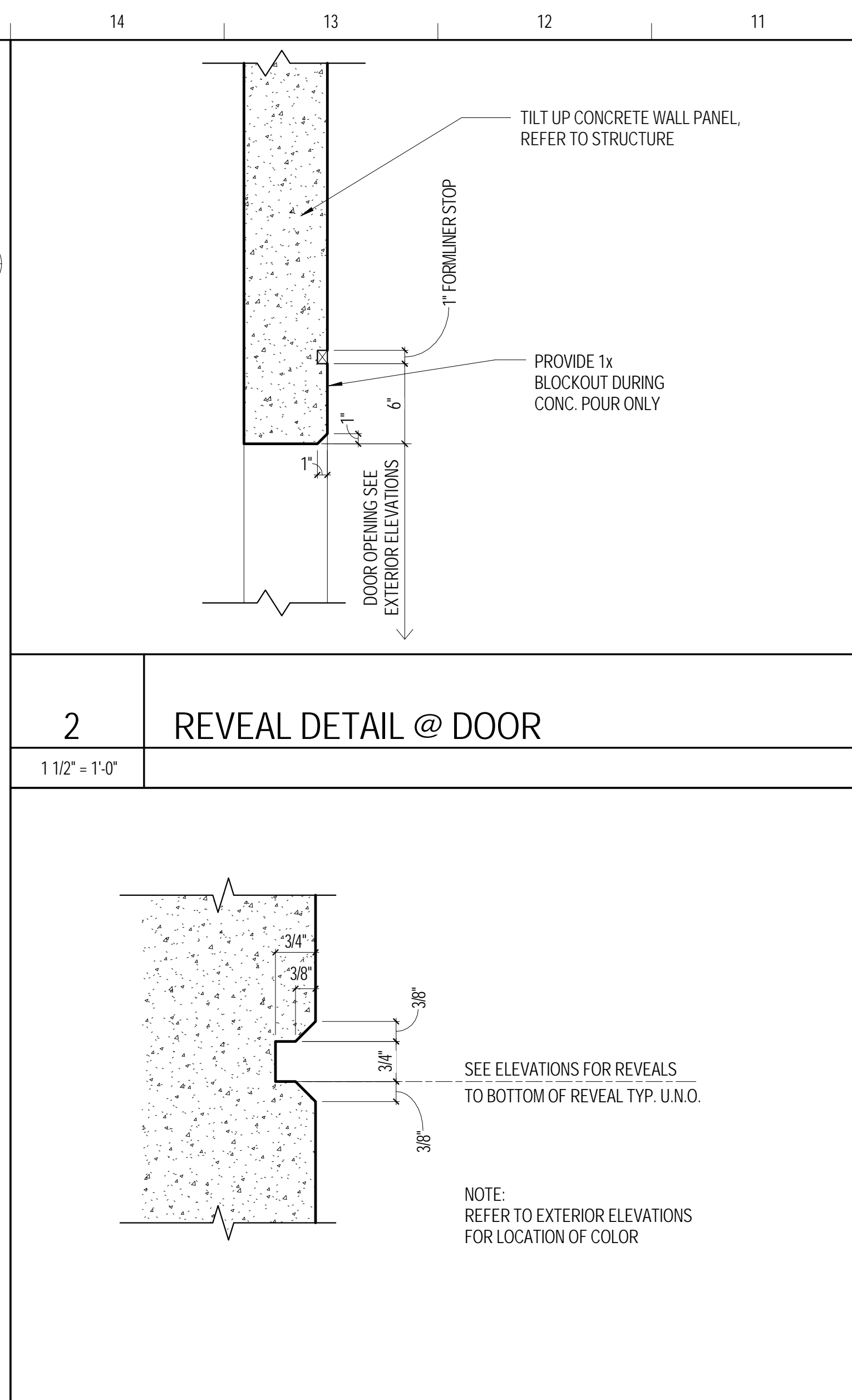
AS101

Submital: PERMIT SET
Issue Date: 09/06/2016

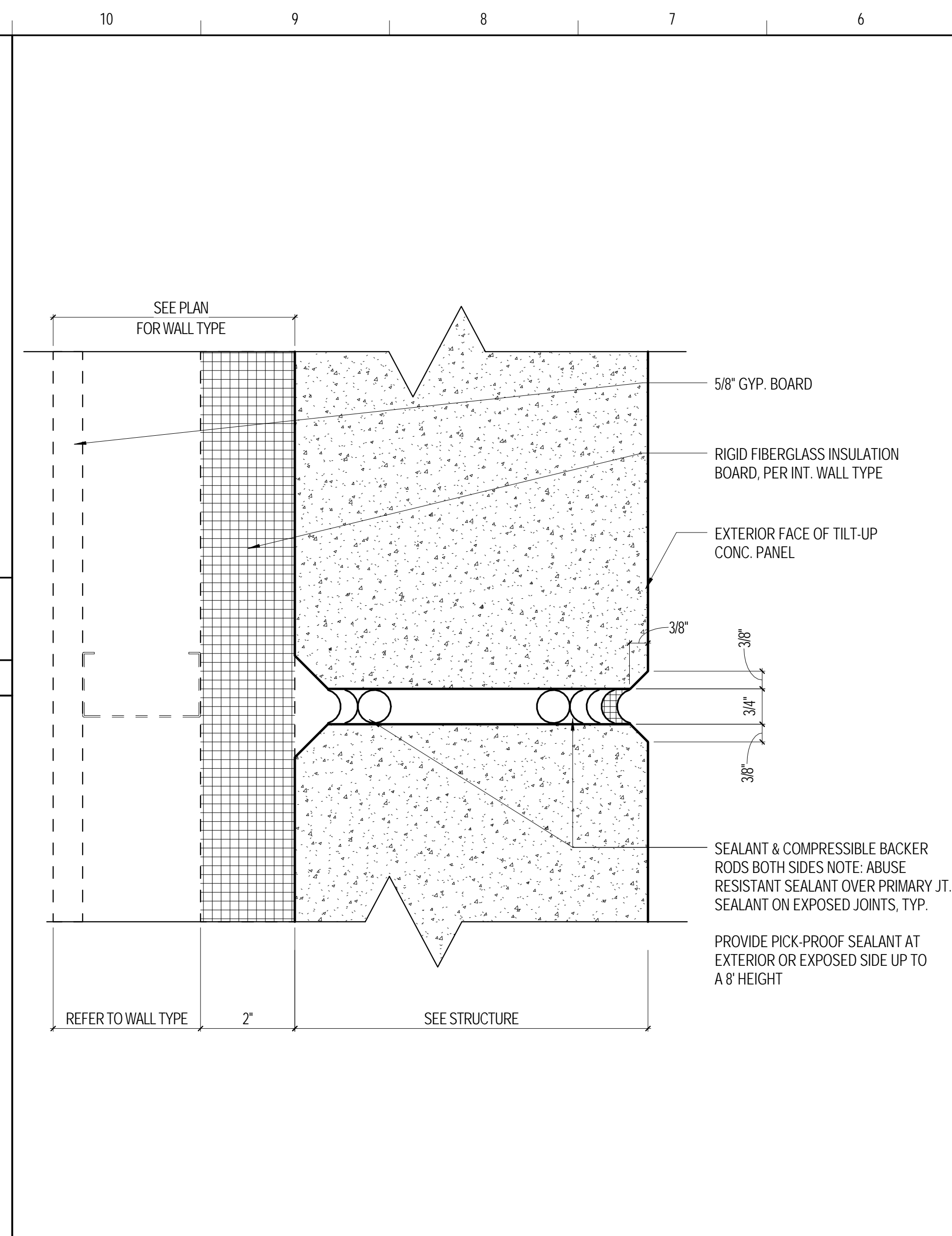
RELEASED FOR CONSTRUCTION



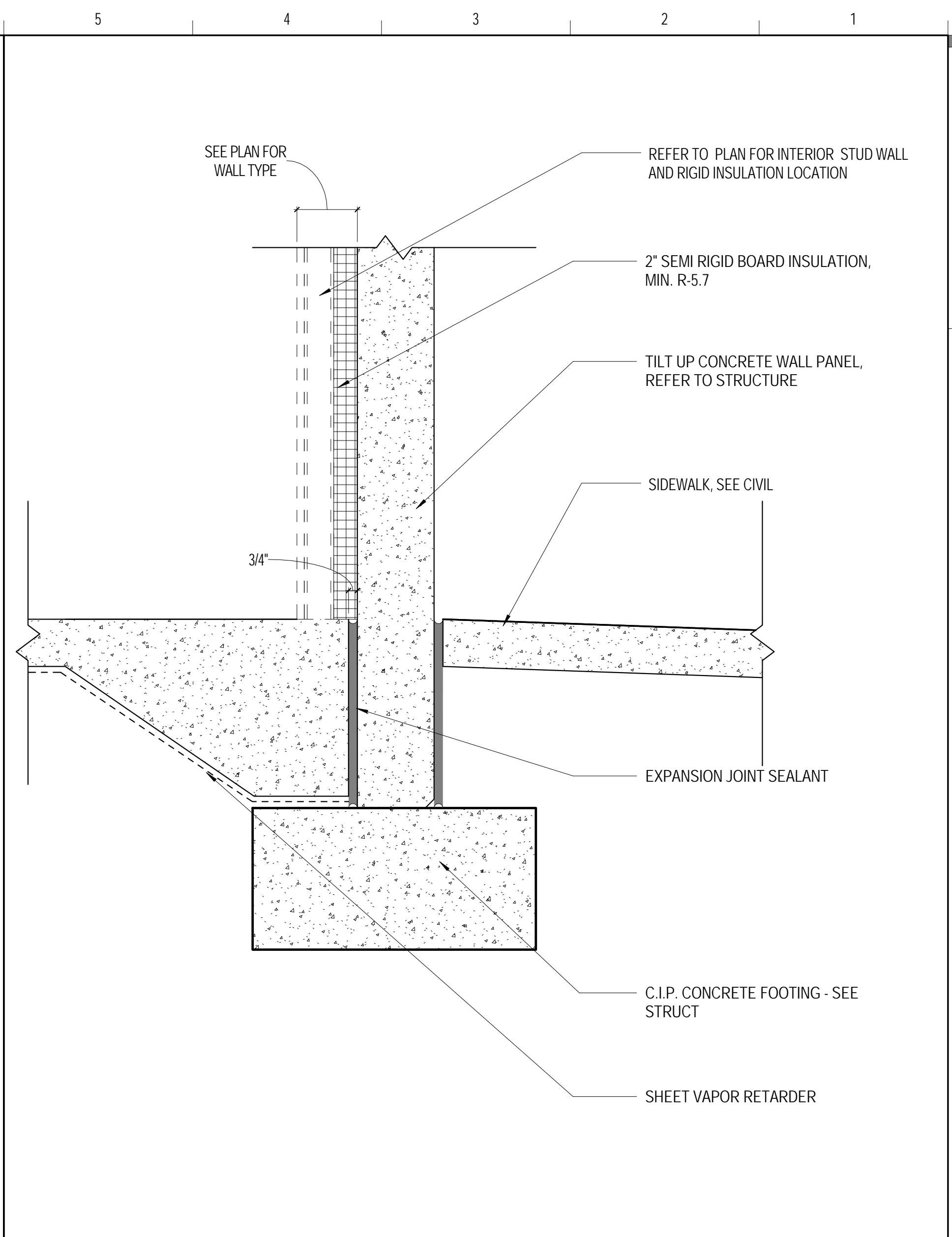
1 REVEAL DETAIL @ OPENING
3/4" = 1'-0"



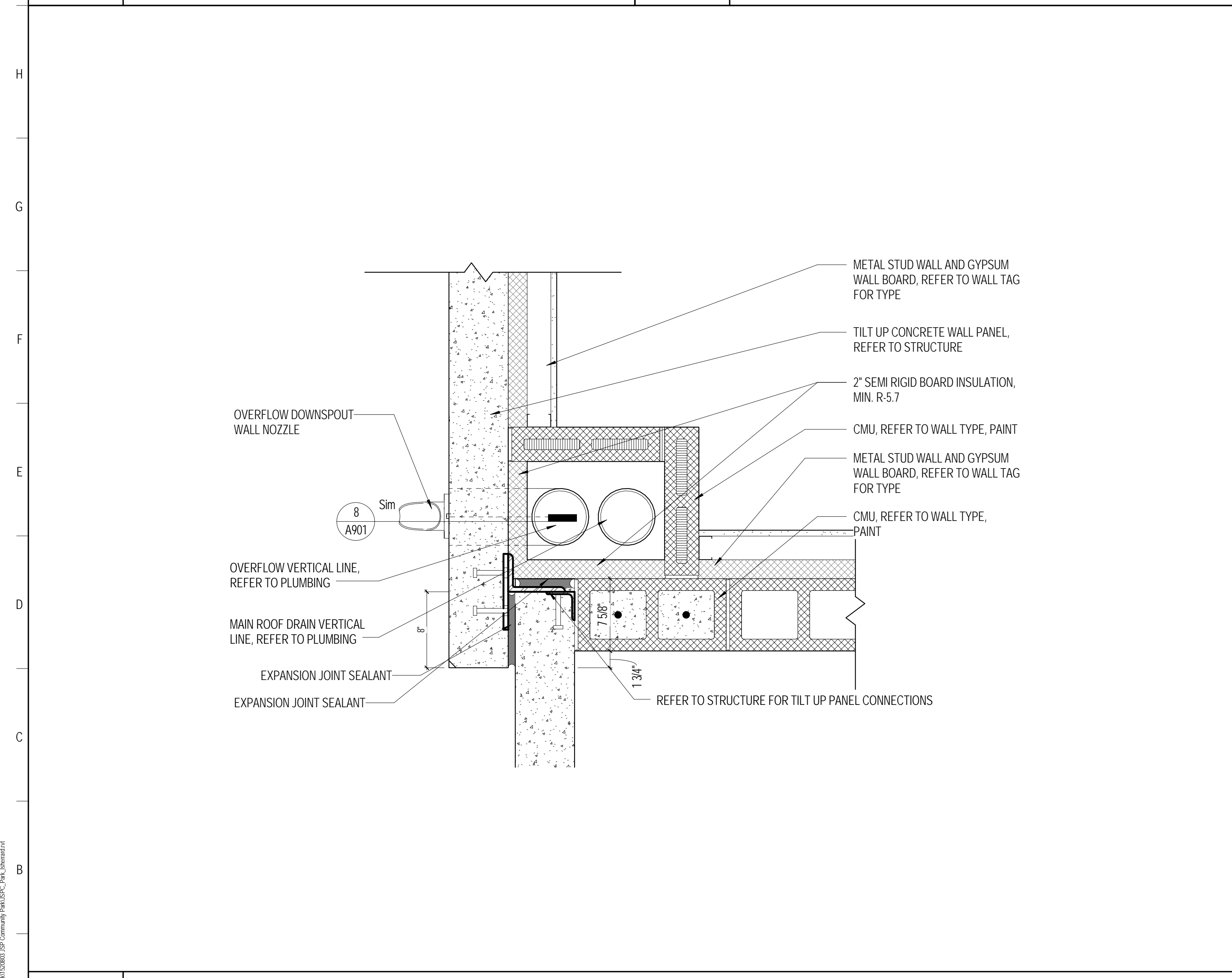
2 REVEAL DETAIL @ DOOR
1 1/2" = 1'-0"



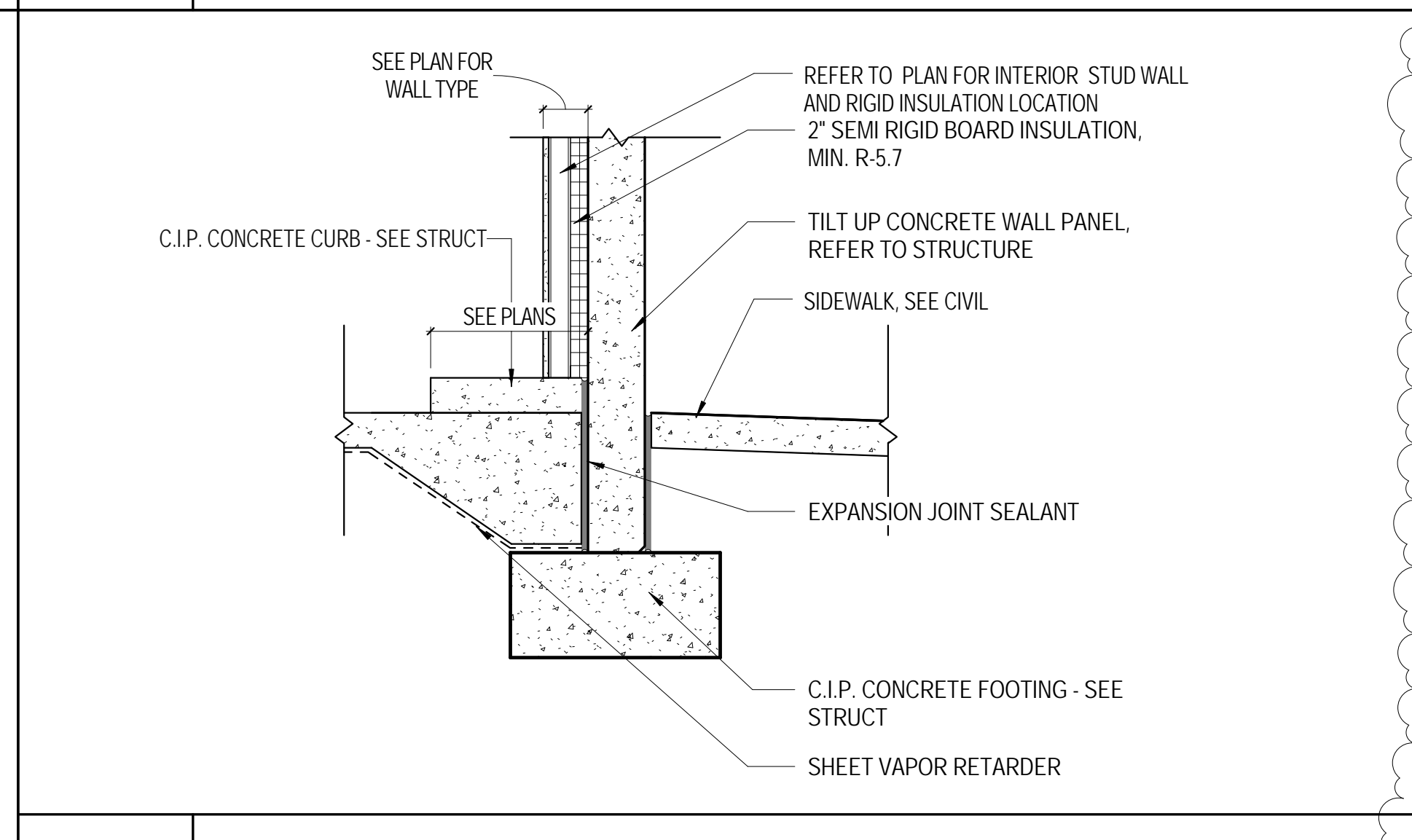
4 TILT UP PANEL JOINT - PLAN DETAIL
6" = 1'-0"



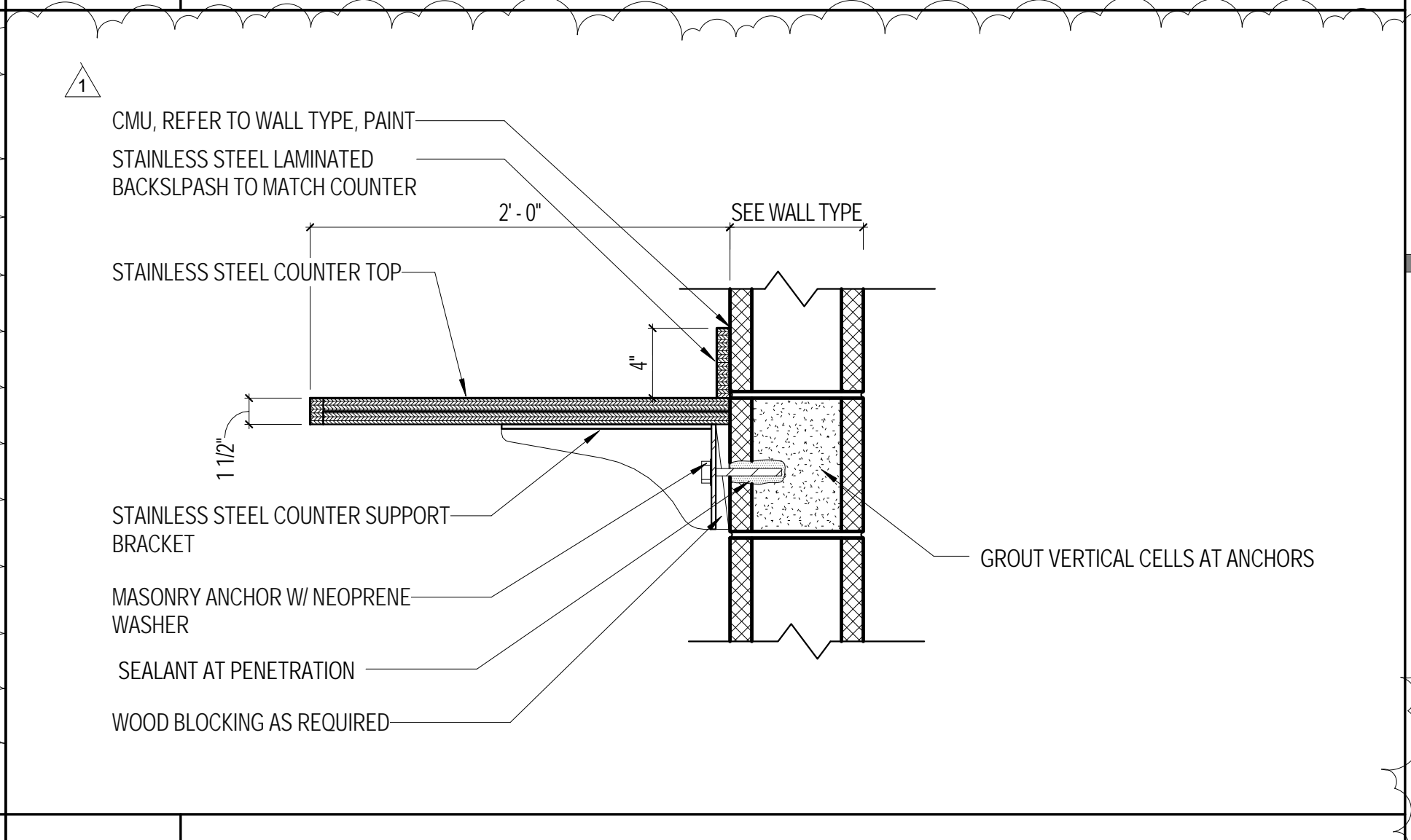
5 TILT UP WALL AT FOOTER - TYP.
1 1/2" = 1'-0"



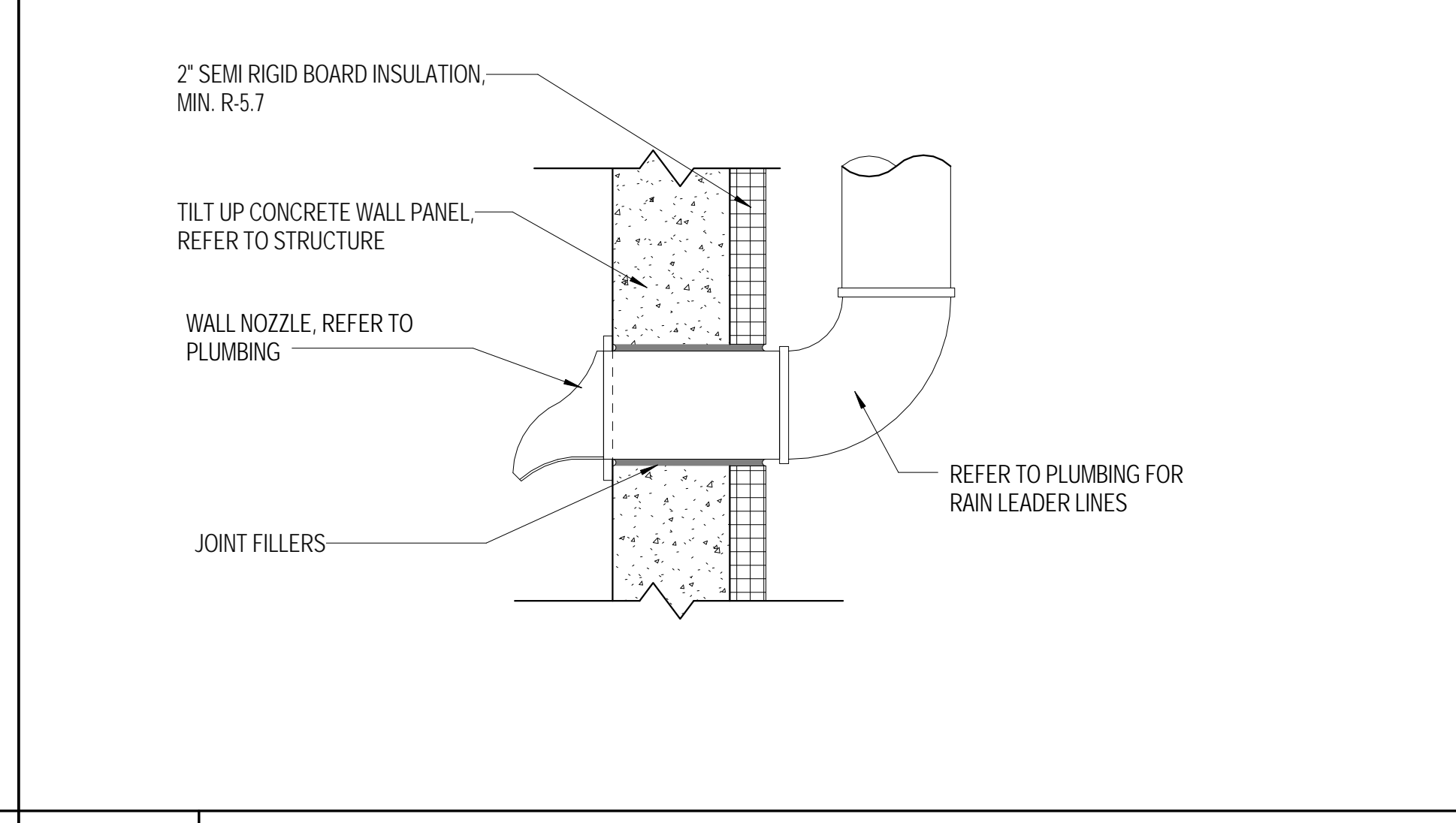
6 DETAIL AT TILT UP WALL LAP AND ROOF DRAIN BUMP OUT
1 1/2" = 1'-0"



7 TILT UP WALL FOOTER AT LOCKER CURBS
3/4" = 1'-0"



9 COUNTER TOP SECTION @ TICKET BOOTH
1 1/2" = 1'-0"



8 WALL NOZZLE DETAIL
1 1/2" = 1'-0"

SCHENKELSHULTZ
ARCHITECTURE

200 E. ROBINSON STREET, SUITE 300
ORLANDO, FLORIDA 32801
voice 407-872-3322
fax 407-872-3303
schenkelshultz.com
SS Lic. No. AA-C000937

CONFIDENTIAL. COPYRIGHT 2014 SCHENKEL & SHULTZ, INC.
SEE WWW.SCHENKELSHULTZ.COM FOR POLICY AND INFORMATION

comm no.: 1520803
drawn LMS
checked: DG

ARCHITECTURAL
LILIAN M. SHERBARD
APR0902
06/04/14

SEAL

Revision Schedule		
No.	Description	Date

JONATHAN "SCOTT" PINE COMMUNITY PARK

2199 FICQUETTE ROAD
WINDERMERE, FL 34786

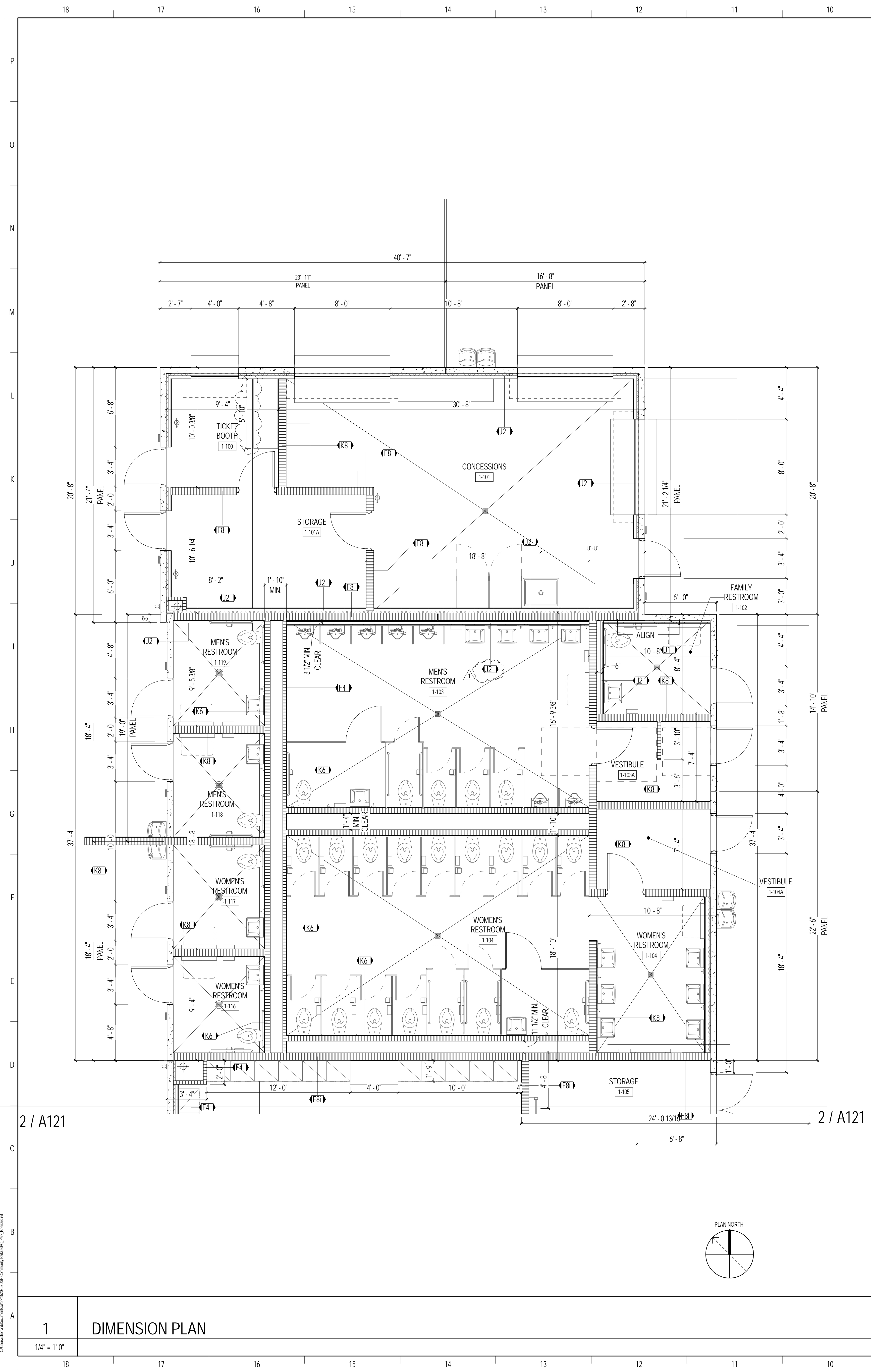
ORANGE COUNTY
201 S. ROSALIND AVENUE
ORLANDO, FLORIDA 32801

EXTERIOR DETAILS

A901

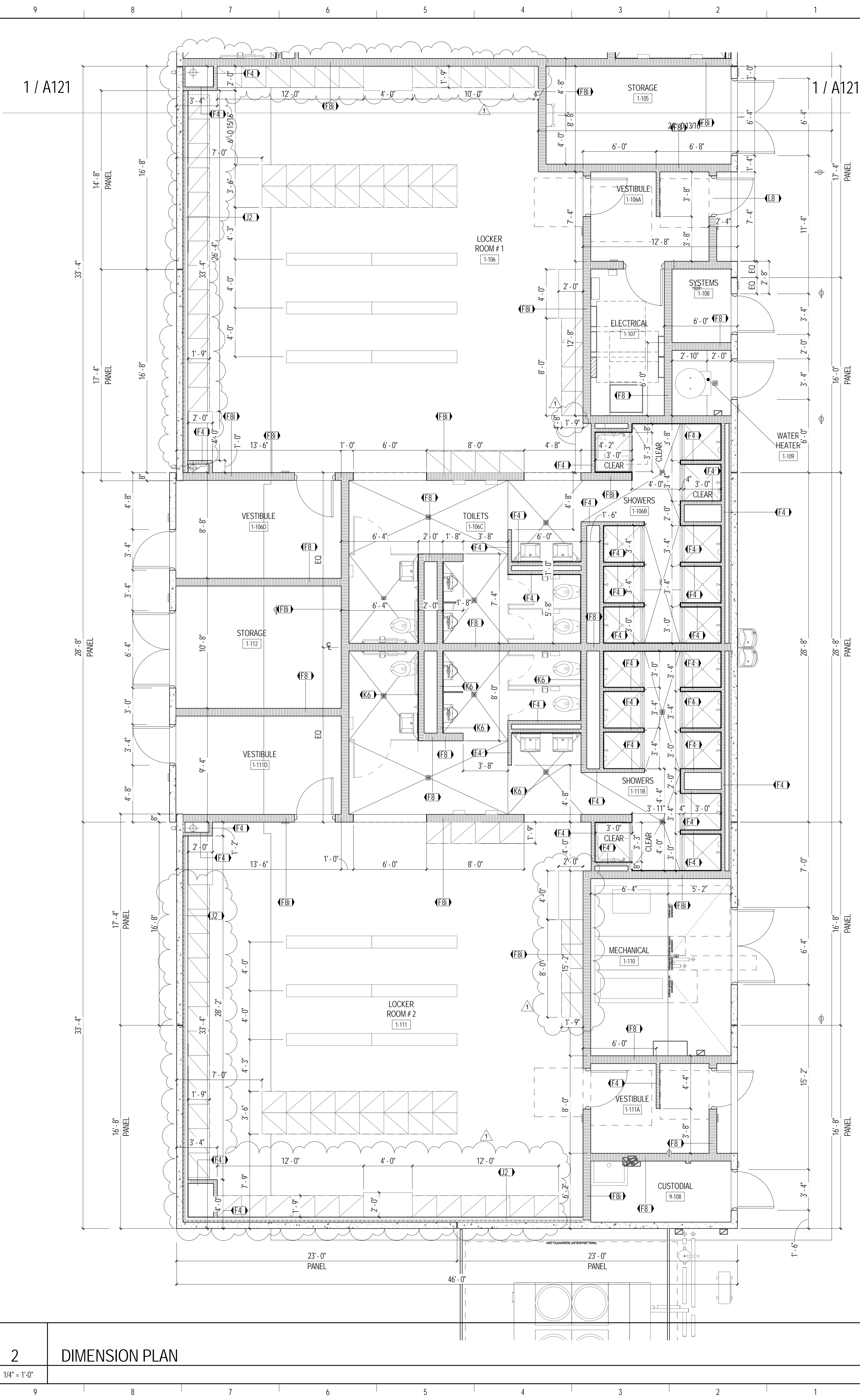
Submitted: PERMIT SET
Issue Date: 09/06/2016

RELEASED FOR CONSTRUCTION



2 / A121

2 / A121

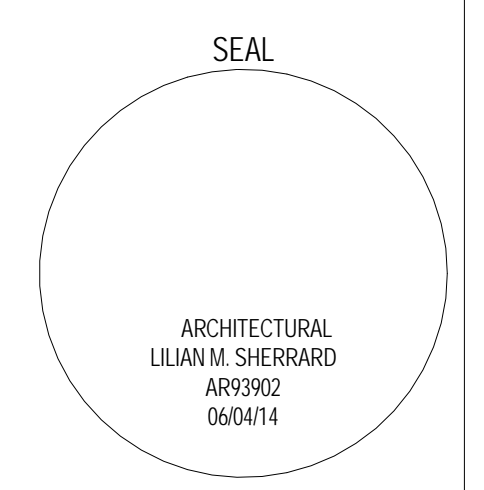


1 / A121

1 / A121

SCHENKELSHULTZ
 ARCHITECTURE
 200 E. ROBINSON STREET, SUITE 300
 ORLANDO, FLORIDA 32801
 voice 407-872-3322
 fax 407-872-3303
 schenkelshultz.com
 SS Lic. No. -AA-C00937
 CONFIDENTIAL. COPYRIGHT 2014 SCHENKEL & SHULTZ, INC.
 SEE WWW.SCHENKELSHULTZ.COM FOR POLICY AND INFORMATION

comm no.: 1520803
 drawn LMS
 checked DG



Revision Schedule		
No.	Description	Date
1	RESPONSE TO RFI	08/20/14

JONATHAN "SCOTT" PINE COMMUNITY PARK

7199 FICQUETTE ROAD
 WINDERMERE, FL 34786
 ORANGE COUNTY
 201 S. ROSALIND AVENUE
 ORLANDO, FLORIDA 32801

DIMENSION PLAN

A121

Submitted: PERMIT SET
 Issue Date: 09/06/2016

15/09/2014 12:18:27 PM
 C:\Users\lms\Documents\1520803\1520803-01\Community Park\A121\A121.dwg

RELEASED FOR CONSTRUCTION