

March 5, 2015
BOARD OF COUNTY COMMISSIONERS
ORANGE COUNTY, FLORIDA

ADDENDUM NO. 6
IFB NO. Y15-742 PH
SOUTH WATER RECLAMATION FACILITY
PRELIMINARY TREATMENT STRUCTURE ODOR CONTROL SYSTEM

BID OPENING DATE: March 12, 2015

This addendum is hereby incorporated into the bid documents of the project referenced above. The following items are clarifications, corrections, additions, deletions and/or revisions to and shall take precedence over the original documents. Additions are indicated by underlining, deletions are indicated by ~~strikethrough~~.

The bid opening date remains March 12, 2015.

A. BID DOCUMENTS and SPECIFICATIONS

1. Section 02020 – DEMOLITION OF EXISTING STRUCTURES, revise the following in Section 1.01, A. Second sentence

The existing FRP tank, tank piping, and tank accessories on the existing support pad for the proposed Odor Control System shall be demolished and disposed of offsite. Demolition of the existing FRP tank, piping and accessories will be required prior to the installation of the proposed odor control system. The proposed odor control system shall be installed prior to demolition of the existing ~~structure-odor control system~~. The Contractor shall maintain operation of the existing odor control including biofilters, fans, and ductwork until the proposed system has been installed, tested, and cleaned.

2. Section 11530 – BIOTOWER ODOR CONTROL SYSTEM, revise Section 1.02.C,

Biotower Odor Control System shall be manufactured by Evoqua Water Technologies, LLC, BioAir, Biorem, or Envirogen, without exception

3. Section 11530 – BIOTOWER ODOR CONTROL SYSTEM, revise Section 3.02.C

C. Fill the reactor vessel with water to the bottom of the air inlet and allow to settle for 7 days. Do not attach connecting piping and ductwork until after this period to allow for any differential settlement. Check for leaks and correct any repair and leaking areas.

B. DRAWINGS

1. Drawings E02 shows that we are running 10#14 wires from the Odor Control Panel to PLC-04A. Drawings E04 shows the location for PLC-06A. Please specify the location of PLC-04A.?

Drawings E02 revise callout indicating ~~PLC-04A~~ PLC-06A.

2. Drawing No. E02

REPLACE Drawing No. E02 in its entirety with the attached Drawing No. E02 dated February 2015.

3. Drawing No. E04

REPLACE Drawing No. E04 in its entirety with the attached Drawing No. E04 dated February 2015.

C. QUESTIONS (Answers are provided in bold and italics)

1. Exhaust fan is shown on sheet E-02 as 1.5hp and is shown on sheet E-04 as 10hp. Please clarify the correct size.

The exhaust fan to be rated at 1.5HP per Drawing E02 and specification section 15800, 2.01, E. Refer to attached revised Drawing E04.

2. On electrical drawing E02 it shows conduit sizes for Water box, Recir. pump and Blower, but it also states that the electrical contractor is ONLY responsible for the line side of the control panel and extend conductor to PLC. Please clarify that this is correct and that there will not be any conduit or conductors required by the electrical sub on the Skid. Only to PLC and MCC USKA.

The Electrical Contractor shall furnish and install all conduit, wire and EYS fittings for the Odor Control System as called-out on Drawing E02. Odor Control System equipment is furnished by odor control manufacturer under specification section 11530. Refer to attached revised Drawing E02.

3. The Recirculation pump is not depicted on the electrical drawings, only on the riser.

Refer to attached revised Drawing E04.

4. Please clarify the pipe support material. Specs. Call for 316SS and Drawings depict Alum.

Yes, aluminum is correct material.

5. Clarify details on pipe supports. Dwg calls for 8' Max height on PS1 pipe supports, but dwg M03 depicts ductwork 12' high above the grit classifier.

The PS1 pipe supports shown in the details can accommodate a height of 12ft.

6. Please confirm that the Existing Tank on the Future Odor Control Pad is to be removed by owner.

The existing tank will be demolished and removed by the Contractor, refer to A.1 above.

7. With 2 of the classifiers not installed currently should the ductwork stop or pipe supports added for the dead end run.

There should not be any cantilevering duct, the pipe supports should be provided for the dead end runs for future down pipe connections .

8. Will details be provided where flowable fill cores will be required to fill below the PTS?

Locations of cored holes will be identified by the Owner during construction. Refer to Notes on Drawing S01.

D. The Bidder shall acknowledge receipt of this addendum by completing the applicable section in the solicitation or by completion of the acknowledgement information on the addendum. Either form of acknowledgement must be completed and returned not later than the date and time for receipt of the bid.

E. All other terms and conditions remain the same.

Receipt acknowledged by:

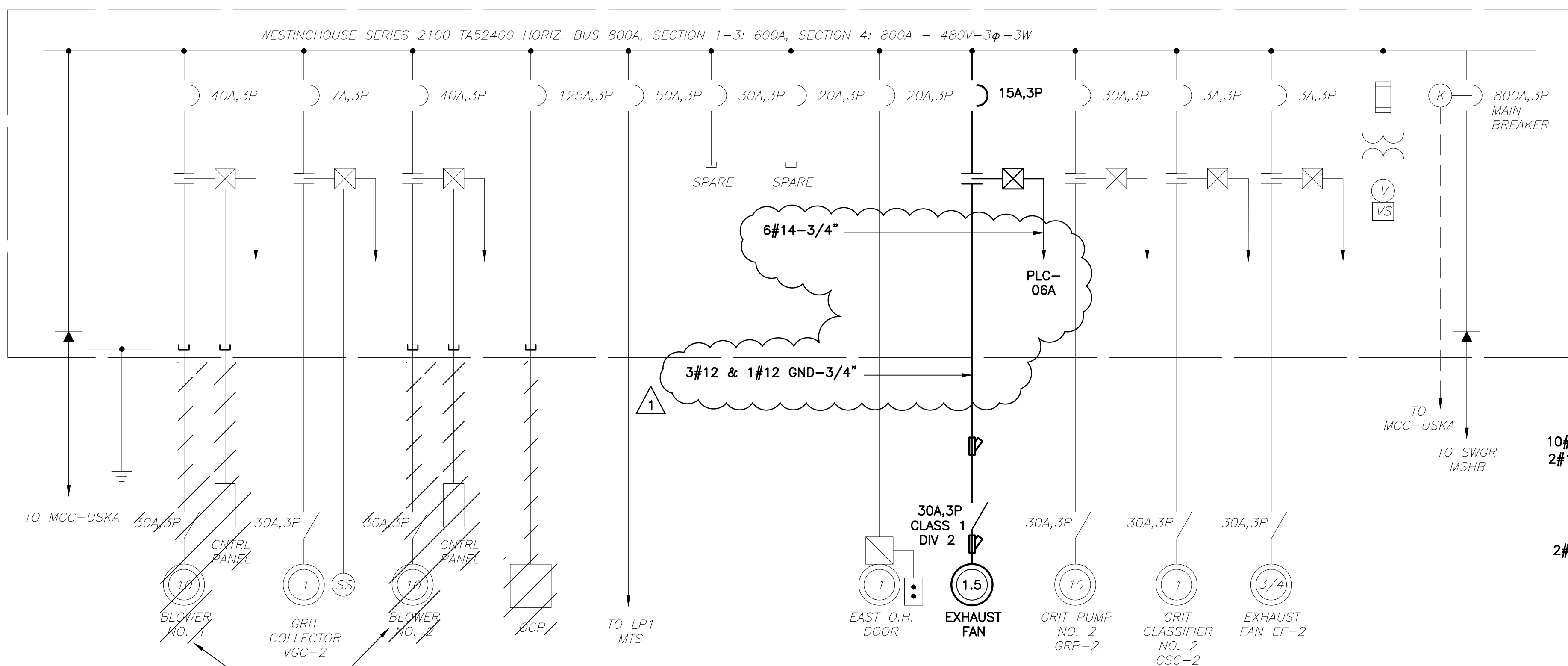
Authorized Signature

Date Signed

Title

Name of Firm

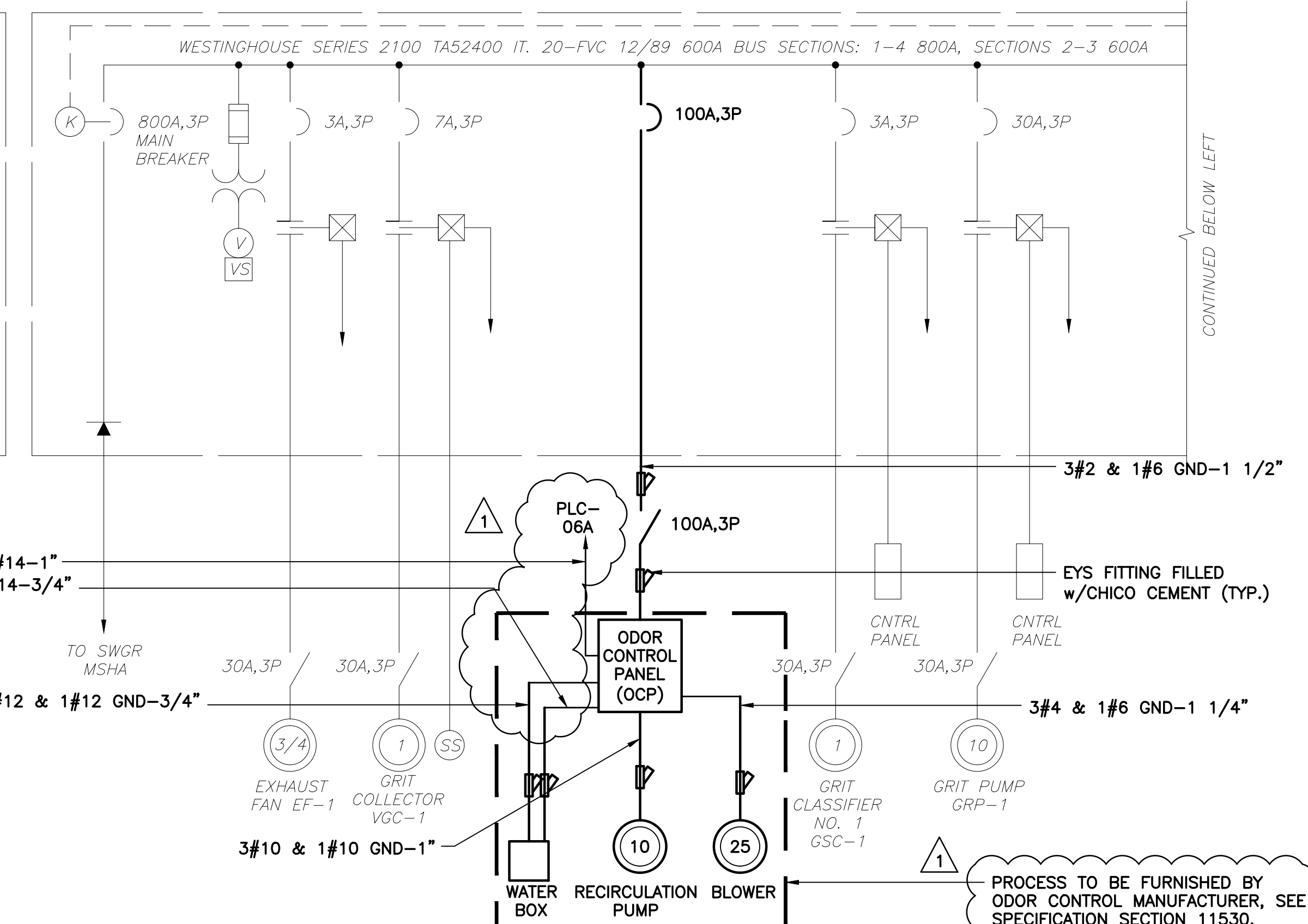
MOTOR CONTROL CENTER - 'MCC-USKB'



'MCC-USKB' SINGLE LINE DIAGRAM

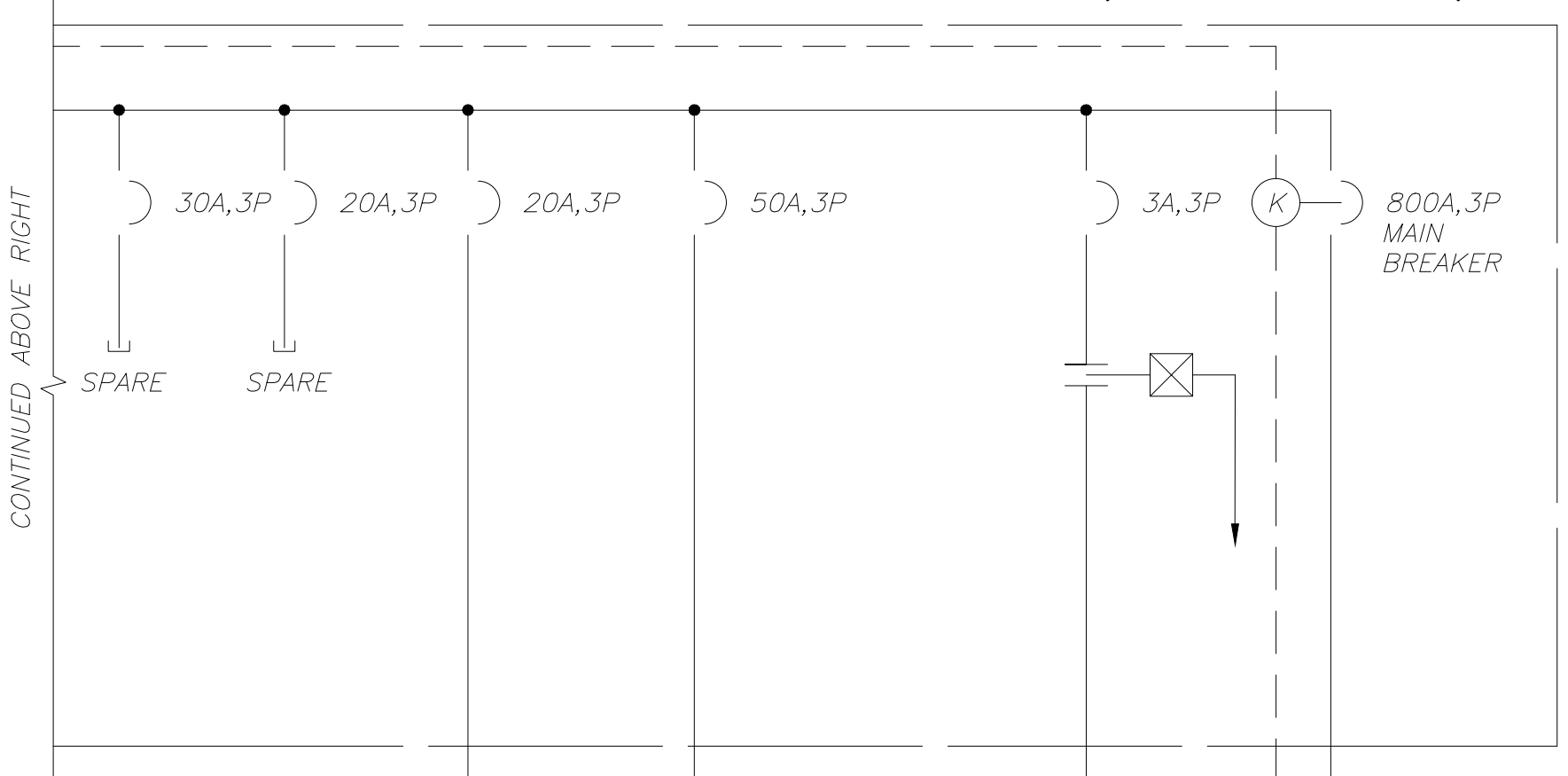
EXISTING BLOWERS AND ASSOCIATED FEEDERS TO BE DISCONNECTED AND REMOVED. EXISTING CONDUIT TO BE CUT AT THE POINT OF CONCEALMENT, THREADED AND CAPPED, TYP.

MOTOR CONTROL CENTER - 'MCC-USKA'



'MCC-USKA' SINGLE LINE DIAGRAM

PROCESS TO BE FURNISHED BY ODOR CONTROL MANUFACTURER, SEE SPECIFICATION SECTION 11530. CONTRACTOR IS RESPONSIBLE FOR ALL WIRING BETWEEN COMPONENTS AS SHOWN

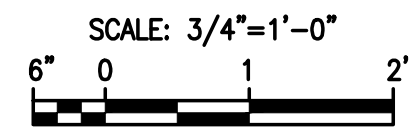


MCC-USKB				MCC-USKA			
SPACE	7A, NEMA SIZE 1 GRIT COLLECTOR VGC 2	SPACE	ELR & LDR RELAYS	ELR & LDR RELAYS	EF CONTROL 1, 2 & 3 HOA-1 HOA-2 HOA-3 A/C CONTROL	SPACE	3A, NEMA SIZE 1 EF-3
SPACE	30A, NEMA SIZE 1 BLOWER #1	30A, NEMA SIZE 1 GRIT PUMP #2	METER SECTION	METER SECTION	3A, NEMA SIZE 1 GRIT GRIT CLASIFIER GSC 1	SPACE	SPACE
SPACE	30A, NEMA SIZE 1 BLOWER #1	25A, NEMA SIZE 1 ODOR CONTROL	3A, NEMA SIZE 1 GRIT GRIT CLASIFIER GSC 2	800AF 800AT MAIN BREAKER	800AF 800AT MAIN BREAKER	30A, NEMA SIZE 1 GRIT PUMP #1	800AF 800AT TIE BREAKER
TIE LUGS ONLY	50A LPT-1 MTS	30A SPARE	3A, NEMA SIZE 1 EF-2	7A, NEMA SIZE 1 GRIT COLLECTOR VGC 1	7A, NEMA SIZE 1 GRIT COLLECTOR VGC 1	20A SPARE	20A SPARE
	20A SPARE	20A E. OH DOOR				20A NORTH LPT-1 MTS	50A LPT-1 MTS

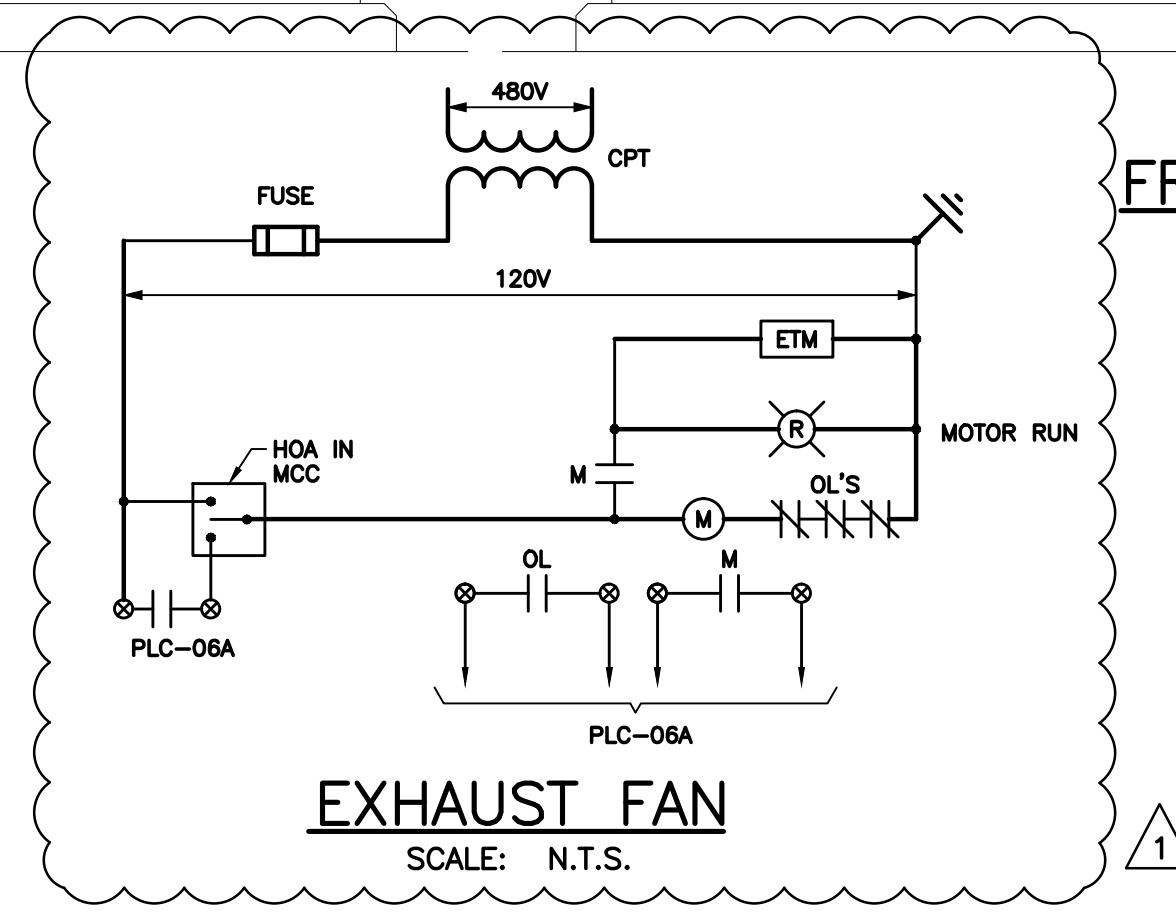
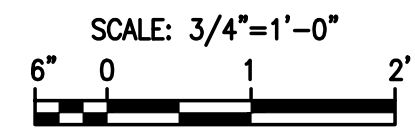
MCC-USKB				MCC-USKA			
SPACE	7A, NEMA SIZE 1 GRIT COLLECTOR VGC 2	SPACE	ELR & LDR RELAYS	ELR & LDR RELAYS	EF CONTROL 1, 2 & 3 HOA-1 HOA-2 HOA-3 A/C CONTROL	SPACE	100A,3P ODOR CONTROL PANEL (OCP)
SPACE	40A,3P NEMA SIZE 1 SPARE	15A,3P NEMA SIZE 1 STR DUMPSTER AREA EXHAUST FAN	METER SECTION	METER SECTION	3A, NEMA SIZE 1 GRIT GRIT CLASIFIER GSC 1	SPACE	SPACE
SPACE	40A,3P NEMA SIZE 1 SPARE	40A,3P NEMA SIZE 1 SPARE	3A, NEMA SIZE 1 GRIT PUMP #2	800AF 800AT MAIN BREAKER	800AF 800AT MAIN BREAKER	30A, NEMA SIZE 1 GRIT PUMP #1	800AF 800AT TIE BREAKER
TIE LUGS ONLY	50A LPT-1 MTS	30A SPARE	3A, NEMA SIZE 1 EF-2	7A, NEMA SIZE 1 GRIT COLLECTOR VGC 1	7A, NEMA SIZE 1 GRIT COLLECTOR VGC 1	20A SPARE	20A SPARE
	20A SPARE	20A E. OH DOOR				20A NORTH LPT-1 MTS	50A LPT-1 MTS

MCC-USKA & MCC-USKB EXISTING FRONT VIEW (PRIMARY TREATMENT BLDG.)

NOTES:
 1) MODIFY MCC AS SHOWN ON SINGLE LINE DIAGRAM. PROVIDE UPDATED NAMEPLATES.



MCC-USKA & MCC-USKB MODIFIED FRONT VIEW (PRIMARY TREATMENT BLDG.)



REV	DATE	DESCRIPTION	BY
1	02/12/15	ADDENDUM NO. 4	LMR
0	10/2014	ISSUED FOR BID	LMR

Issue Certification
 Lillian M. Reyes, P.E.
 Florida P.E. No. 50780
 Electrical Design Associates
 Certificate of Authorization No. 8079
 4763 Conway Road, Suite E
 Orlando, FL 32812

Designed DD
 Drawn RRM
 Checked LMR
 Reviewed DD
 Approved LMR

DATE 6/19/14

ORANGE COUNTY
 SWRF PRELIMINARY TREATMENT STRUCTURE ODOR CONTROL SYSTEM

ELECTRICAL

SINGLE LINE DIAGRAMS & EQUIPMENT FRONT VIEWS

PROJECT NO.:	110013
SCALE:	NOTED
DRAWING NO.:	E02
REVISION:	0
SHEET NO.:	16 OF 19

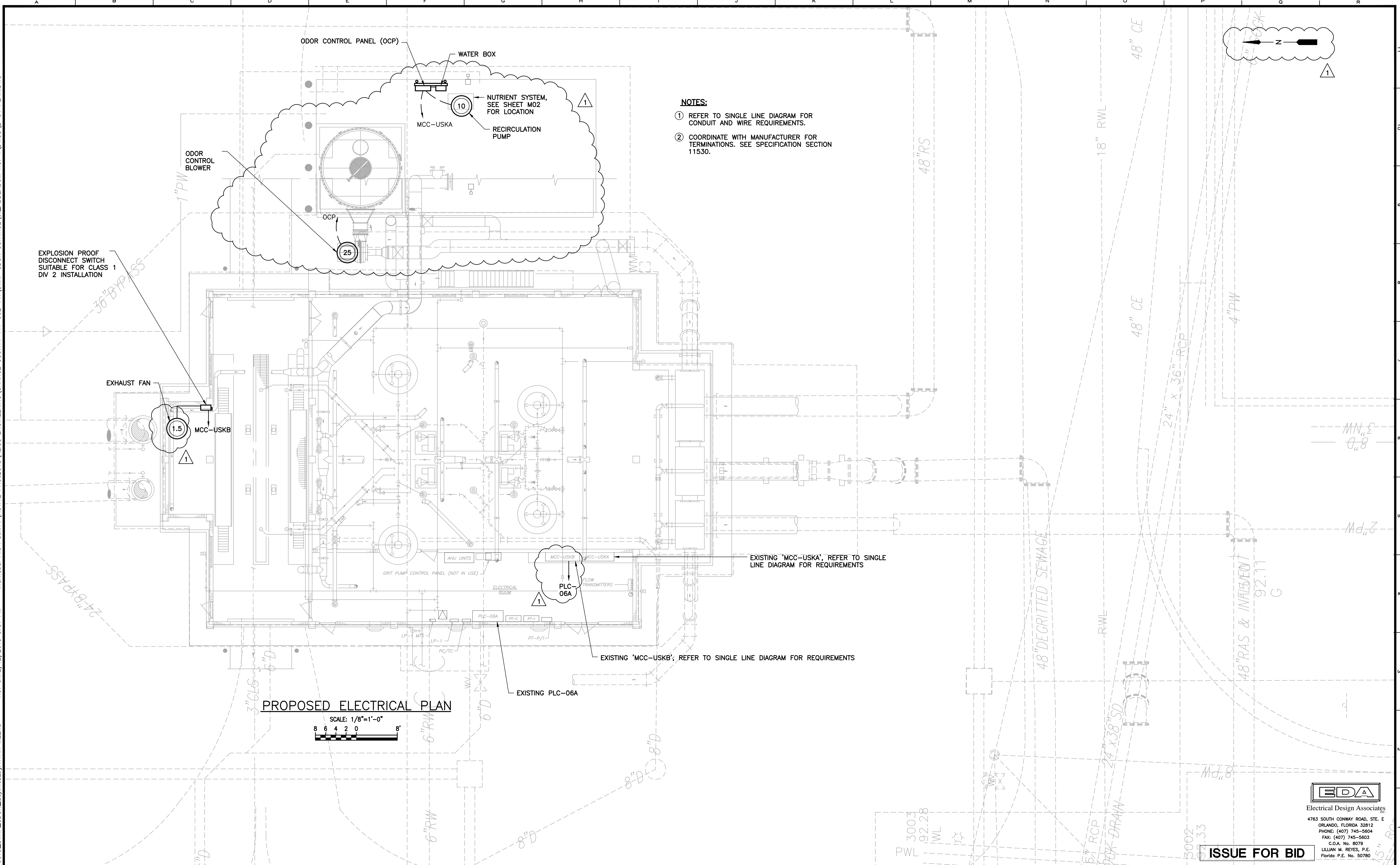
EDA
 Electrical Design Associates
 4763 SOUTH CONWAY ROAD, STE. E
 ORLANDO, FLORIDA 32812
 PHONE: (407) 745-5604
 FAX: (407) 745-5603
 C.O.A. No. 8079
 LILLIAN M. REYES, P.E.
 Florida P.E. No. 50780

ISSUE FOR BID

RE
 REISS ENGINEERING, INC.
 1016 SPRING VILLAS PT
 WINTER SPRINGS, FL 32708
 (407) 679-5358

Parent Sheet Set: 110013_SWRF_ODOR_Bldg/Proj/Drawings/ISSUE ENGINEERING/ORANGE COUNTY Y11-902-PH-SWRF ODOR CONTROL/6_ADDENDUM NO. 4 DWGS/E-02 SLD.DWG
 Rev. on: 2/12/2015 3:51 PM F:\Projects\110013_SWRF_ODOR_Bldg\Proj\Drawings\ISSUE ENGINEERING/ORANGE COUNTY Y11-902-PH-SWRF ODOR CONTROL/6_ADDENDUM NO. 4 DWGS/E-02 SLD.DWG
 F:\Projects\110013_SWRF_ODOR_Bldg\Proj\Drawings\ISSUE ENGINEERING/ORANGE COUNTY Y11-902-PH-SWRF ODOR CONTROL/6_ADDENDUM NO. 4 DWGS/E-02 SLD.DWG
 F:\Projects\110013_SWRF_ODOR_Bldg\Proj\Drawings\ISSUE ENGINEERING/ORANGE COUNTY Y11-902-PH-SWRF ODOR CONTROL/6_ADDENDUM NO. 4 DWGS/E-02 SLD.DWG

Parent Sheet Set: 110013_SWRF_ODOR_0001.dwg; RYAN MEEKS; Rev. on: 2/12/2015 3:51 PM; Individual File Path: F:\ACTIVE PROJECTS\REISS ENGINEERING\ORANGE COUNTY Y11-902-PH\SWRF ODOR CONTROL\6_ADDENDUM NO. 4 DWGS\E-04_PLANDWG



- NOTES:**
- ① REFER TO SINGLE LINE DIAGRAM FOR CONDUIT AND WIRE REQUIREMENTS.
 - ② COORDINATE WITH MANUFACTURER FOR TERMINATIONS. SEE SPECIFICATION SECTION 11530.

EXISTING 'MCC-USKA', REFER TO SINGLE LINE DIAGRAM FOR REQUIREMENTS

EXISTING 'MCC-USKB', REFER TO SINGLE LINE DIAGRAM FOR REQUIREMENTS

EXISTING PLC-06A

PROPOSED ELECTRICAL PLAN

SCALE: 1/8"=1'-0"
 8 6 4 2 0 8'

EDA
 Electrical Design Associates
 4763 SOUTH CONWAY ROAD, STE. E
 ORLANDO, FLORIDA 32812
 PHONE: (407) 745-5604
 FAX: (407) 745-5603
 C.O.A. No. 8079
 LILLIAN M. REYES, P.E.
 Florida P.E. No. 50780

ISSUE FOR BID



REV	DATE	DESCRIPTION	BY
1	02/12/15	ADDENDUM NO. 4	LMR
0	10/2014	ISSUED FOR BID	LMR

Issue Certification
 Lillian M. Reyes, P.E.
 Florida P.E. No. 50780
 Electrical Design Associates
 Certificate of Authorization No. 8079
 4763 Conway Road, Suite E
 Orlando, FL 32812

Designed DD
 Drawn RRM
 Checked LMR
 Reviewed DD
 Approved LMR
 Date 6/19/14

ORANGE COUNTY
 SWRF PRELIMINARY TREATMENT STRUCTURE ODOR CONTROL SYSTEM
 ELECTRICAL
PROPOSED ELECTRICAL PLAN

PROJECT NO.: 110013	
SCALE: NOTED	REVISION: 0
DRAWING NO. E04	SHEET NO.: 18 OF 19

RE REISS ENGINEERING, INC.
 1016 SPRING VILLAS PT
 WINTER SPRINGS, FL 32708
 (407) 679-5358