

**April 24, 2014**  
**BOARD OF COUNTY COMMISSIONERS**  
**ORANGE COUNTY, FLORIDA**  
**Addendum No. 3, IFB Y14-782-RM**

**ORANGE COUNTY ROADS AND DRAINAGE DIVISION - THREE POINTS  
MAINTENANCE FACILITY**

**REVISED - Bid Opening Date: May 8, 2014 at 2:00 P.M.**

This addendum is hereby incorporated into the bid documents of the project referenced above. The following items are clarifications, corrections, additions, deletions and/or revisions to, and shall take precedence over, the original documents. Underlining indicates additions, deletions are indicated by ~~strikethrough~~.

A. The bid opening date has changed from ~~April 29, 2014~~ to May 8, 2014 at 2:00 P.M.

B. Additions, Deletions and Clarifications:

1. The following drawings, have been revised:

- a. Sheet A0.1 Dated 04-15-2014 - Update sheet title nomenclature
- b. Sheet A3.3 Dated 04-15-2014 - ADD: Eyewash next to sink. Update typical conc. slab dimensions.
- c. Sheet A3.4 Dated 04-15-2014 - ADD: Update sheet title nomenclature
- d. Sheet A3.5 Dated 04-15-2014 - ADD: Update sheet title nomenclature
- e. Sheet P3.3 Dated 04-15-2014 - ADD: Emergency eyewash station.
- f. Sheet E1.0 Dated 04-15-2014 - ADD: Power connection for well pump controller. Power connection for lift station.
- g. Sheet E5.1 Dated 04-15-2014 - REVISE: Mechanical feeder schedule.
- h. Sheet E6.1 Dated 04-15-2014 - REVISE: Panel schedule for Panel L2. Panel Schedule for MDP. Mechanical feeder schedule.

**2. Clarification:** There is an existing 6" private sanitary sewer force main located on West side of Young Pine Road between the R/W line and the edge of pavement shown on plans. Contactor shall verify horizontal and

3. vertical location of the existing 6" private force-main and include all coordination effort in crossing this force-main in order to connect the new 4" force-main to existing 6" force-main (OC Utilities) shown on sheet C301 and sheet C303.
  
4. In Part D of the IFB, delete page D-2, the bid item schedule, in its' entirety and replace with the attached **REVISED PAGE D-2**, the revised bid item schedule.

**Add: Additive Bid Item #1:** Provide a 7'-0" HT. steel fence and gates as Additive Bid Item. Use Ameristar Montage II Classic, color black as basis of design or approved equal. See attached cut sheets and site plan with proposed steel fence and gates locations. See Sheet A1.0 titled "Additive Bid Item #1". As part of this Additive Bid Item include:

- a. Provide signed and sealed shop drawings & calculations prepared by a Florida registered professional engineer for design of fence, gates and foundations in compliance with wind loads listed on drawings.
  
- b. The base bid shall have the 6'-0" vinyl chain link (refer to drawings) in its entirety around the site. The Additive Bid Item #1 should account for the steel fence around buildings and chain link (refer to drawings) in the remaining of the property.

**Failure of a bidder to submit their bid using the revised bid item schedule shall result in their bid being found non-responsive.**

C. ACKNOWLEDGEMENT OF ADDENDA

- a. The Bidder/Proposer shall acknowledge receipt of this addendum by completing the applicable section in the solicitation or by completion of the acknowledgement information on the addendum. Either form of acknowledgement must be completed and returned not later than the date and time for receipt of the bid or proposal.
- b. **Receipt acknowledged by:**
- c. All other terms and conditions of the IFB remain the same.

\_\_\_\_\_  
Authorized Signature

\_\_\_\_\_  
Date Signed

\_\_\_\_\_  
Title

\_\_\_\_\_  
Name of Firm



# ABBREVIATIONS

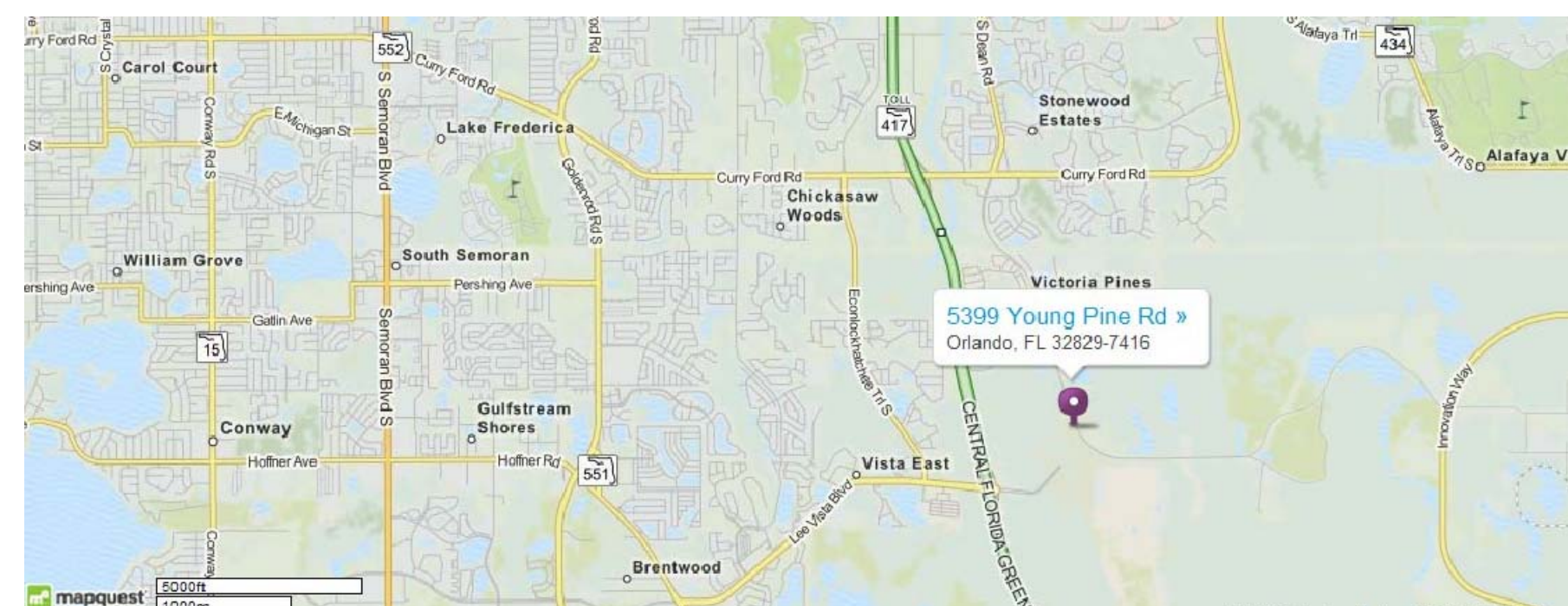
A/C	AIR CONDITION, -ED, -ER, -ING	F.H.C.	FIRE HOSE CABINET	PL	PLATE	ABBREV02
ADJ.	ADJUSTABLE	FIN.	FINISH	P.B.	PEGBOARD	
A.F.F.	ABOVE FINISH FLOOR	FLR.	FLOOR	PLBG	PLUMBING	
ALUM.	ALUMINUM, AND	F.M.	FRAMED MIRROR	PLYWD.	PLYWOOD	
&	AND	F.R.	FIRE RESISTANT	P.P.	POWER POLE	
L	ANGLE	FT.	FEET / FOOT	PT./PTD.	PAINT / PAINTED	
APPROX.	APPROXIMATELY	FTG.	FOOTING	P.T.	PRESSURE TREATED	
@	AT			P.T.D.	PAPER TOWEL DISPENSER	
				P.T.H.	PAPER TOWEL HOLDER	
				P.V.C.	POLYVINYL CHLORIDE	
				PANEL		
BD.	BOARD	GA.	GAUGE	R., RAD.	RADIUS	
BLDG.	BUILDING	GALV.	GALVANIZED	R.C.P.	REINFORCED CONCRETE PIPE	
BLK	BLOCK	G.B.	GRAB BAR	R.D.	ROOF DRAIN	
BM.	BEAM	G.C.	GENERAL CONTRACTOR	RECT.	RECTANGULAR	
B.M.	BENCH MARK	G.L.	GRID LINE	REIN.	REINFORCEMENT	
B.O.	BOTTOM OF	G.W.B.	GYPSUM WALL BOARD	REQ'D.	REQUIRED	
		GYP.	GYPSUM	RM.	ROOM	
				R.O.	ROUGH OPENING	
				R.O.W.	RIGHT-OF-WAY	
				S.	SOUTH	
CAB.	CABINET	HCPD.	HANDICAPPED	SCHEDULE	SCHEDULE	
C. BRD.	CHALKBOARD	H.M.	HOLLOW METAL	S.D.	SOAP DISPENSER	
C.B.	CATCH BASIN	HORIZ.	HORIZONTAL	S.H.	SOAP HOLDER	
C.C.	CONTROL CENTER	HRDW.	HARDWARE	SHT.	SHEET	
CEIL./CLG.	CEILING	HT.	HEIGHT	SM.	SMOOTH	
C.I.	CAST IRON	I.D.	INSIDE DIAMETER	SIMILAR	SIMILAR	
C.J.	CONTROL JOINT	INV.	INVERT	S.M.S.	STRUCTURAL METAL STUD	
CL.	CENTER LINE			S.N.D.	SANITARY NAPKIN DISPOSAL	
CLO./CL.	CLOSET	JAN.	JANITOR	S.N.V.	SANITARY NAPKIN VENDOR	
C.L.P.	CONCRETE LIGHT POLE	JT.	JOINT	SPC.	SPACE	
C.M.P.	CORRUGATED METAL PIPE			SPECS.	SPECIFICATIONS	
COL.	COLUMN	L.P.	LIGHT POLE	SQ.	SQUARE	
CONC.	CONCRETE	M.	MIRROR	S.S.	STAINLESS STEEL/SERVICE SINK	
CONST.	CONSTRUCTION	MAT.	MATERIAL	STD.	STANDARD	
CONT.	CONTINUOUS	MAX.	MAXIMUM	STL.	STEEL	
CONTR.	CONTRACTOR	M.B.H.	MOP AND BROOM HOLDER	STRUCT.	STRUCTURAL	
		MECH.	MECHANICAL	SW.	SWITCH	
		MANUF.	MANUFACTURER	T.	TOILET	
		M.H.	MANHOLE	T.BD.	TACKBOARD	
		MIN.	MINIMUM	T.B.	TIE BEAM	
		MISC.	MISCELLANEOUS	T & G.	TONGUE AND GROOVE	
		M.O.	MASONRY OPENING	T.O.	TOP OF	
		MTD.	MOUNTED	T.P.H.	TOILET PAPER HOLDER	
		MTL.	METAL	TYP.	TYPICAL	
		N.	NORTH	UR.	URINAL	
		NEOP.	NEOPRENE	V.C.P.	VITREOUS CLAY PIPE	
		NO., #	NUMBER	VERT.	VERTICAL	
		N.I.C.	NOT IN CONTRACT			
		O/C.	ON CENTER	W.	WEST	
		O.D.	OUTSIDE DIAMETER	W/	WITH	
		OPNG.	OPENING	W.C.	WATER CLOSET	
F.A.C.	FLORIDA ACCESSIBILITY CODE			WD.	WOOD	
F.D.	FLOOR DRAIN			W.H.	WATER HEATER	
F.E.	FIRE EXTINGUISHER			W.R.	WASTE RECEPTACLE	
F.E.C.	FIRE EXTINGUISHER CABINET					
F.E.L.	FIRE EXTINGUISHER LOCKER					
F.F.	FINISH FLOOR					
F.H.	FIRE HYDRANT					

# ARCHITECTURAL SYMBOLS

	I.D. No. TITLES		I.D. No. SHEET No.		ELEVATION		CSI DIVISION
	SHEET No.		SHEET No.		ANGLE		NOTE NUMBER
	SHEET No.		INTERIOR ELEVATION		ROOM TITLE		CONSTRUCTION KEY NOTE
	INTERIOR ELEVATION KEY SHEET No.		ROOM NAME		ROOM NUMBER		COLUMN COORDINATE
	INTERIOR ELEVATION KEY SHEET No.		ROOM NUMBER		GROSS SQUARE FOOTAGE		RADIUS DIMENSION
	INTERIOR ELEVATION KEY SHEET No.		DOOR NUMBER		MATCHLINE		MATCHLINE
	INTERIOR ELEVATION KEY SHEET No.		WINDOW		WINDOW		HANDRAIL TYPE
	INTERIOR ELEVATION KEY SHEET No.		EQUIPMENT		EQUIPMENT		GRID LINE
	INTERIOR ELEVATION KEY SHEET No.		REVISION		REVISION		UNIVERSAL COLOR
	INTERIOR ELEVATION KEY SHEET No.		PARTITION TYPE		PARTITION TYPE		

# MATERIAL SYMBOLS

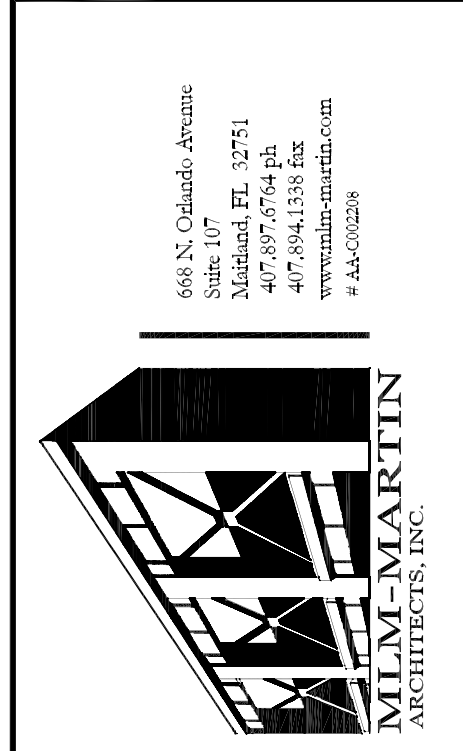
	COMPACT FILL		INSULATION (RIGID)		STUCCO / PLASTER
	LIGHTWEIGHT CONCRETE		GLASS (LARGE SCALE)		SHINGLES / SIDING
	CAST -IN- PLACE CONCRETE		GYPSUM WALL BOARD		GLASS
	CONCRETE MASONRY UNIT METAL (LARGE SCALE)		PLASTER, SAND, CEMENT, GROUT		
	METAL (SMALL SCALE)		RESILIENT FLOORING		
	WOOD BLOCKING		SOUND INSULATED PARTITION		
	PLYWOOD (LARGE SCALE)		STEEL STUD PARTITION (1 HR. RATED)		
	ROUGH WOOD		STEEL STUD PARTITION (NON - RATED)		
	INSULATION (LOOSE OR BATT)				



LOCATION MAP

# INDEX OF DRAWINGS:

GENERAL	STRUCTURAL DRAWINGS	INDEX
A0.0 COVER SHEET	S0.0 STRUCTURAL NOTES	
A0.1 ABBREVIATIONS, SYMBOLS AND DRAWING INDEX	S1.1 OFFICE BUILDING FOUNDATION/ SLAB PLAN AND ROOF FRAMING PLANS	
A0.2 CODE ANALYSIS AND DESIGN CRITERIA	S1.2 FOUNDATION SECTIONS AND DETAILS	
A0.3 MASTER NOTE LIST	S1.3 OFFICE BUILDING SECTIONS AND DETAILS	
A0.4 MASTER NOTE LIST CONTINUED	S1.4 VEHICLE STORAGE FOUNDATION PLAN	
A0.5 SITE DETAILS	S1.5 STORAGE BINS FOUNDATION PLAN, SECTIONS AND DETAILS	
	S1.6 STORAGE BUILDING, FUEL ISLAND, GENERATOR & DUMPSTER FOUNDATION PLANS, SECTIONS & DETAILS	
CIVIL DRAWINGS	MECHANICAL DRAWINGS	
C001 OVERALL EXISTING SITE PLAN	MO.1 GENERAL NOTES, SYMBOL LEGEND AND AND DRAWING INDEX	
C002 SITE DEMOLITION & EROSION CONTROL PLAN	M3.1 OFFICE BUILDING FLOOR PLAN MECHANICAL	
C100 OVERALL SITE PLAN	M3.3 ENLARGED PLAN MECHANICAL	
C101 SITE DEVELOPMENT PLAN	M5.1 CONTROL SCHEMATICS	
C102 SITE DEVELOPMENT PLAN	M6.1 SCHEDULES	
C200 GRADING AND DRAINAGE PLAN		
C201 GRADING AND DRAINAGE PLAN		
C202 GRADING AND DRAINAGE PLAN		
C301 UTILITY SITE PLAN		
C302 UTILITY SITE PLAN		
C303 DIRECTIONAL BORE PLAN		
C401 DETAIL SHEET		
C402 DETAIL SHEET		
C403 DETAIL SHEET		
C404 ORANGE COUNTY DETAIL SHEET		
C405 ORANGE COUNTY DETAIL SHEET		
C406 ORANGE COUNTY DETAIL SHEET		
C407 ORANGE COUNTY DETAIL SHEET		
C408 LIFT STATION DETAIL SHEET		
C501 EXISTING ROAD/ DEMOLITION PLAN		
C502 ROADWAY PLAN		
C503 SIGNAGE AND MARKING PLAN		
LANDSCAPE & IRRIGATION DRAWINGS	PLUMBING DRAWINGS	
L101 SITE LANDSCAPE PLAN	P3.0 GENERAL NOTES AND LEGENDS	
L102 SITE LANDSCAPE PLAN	P3.1 OFFICE BUILDING FLOOR PLAN	
L103 SITE LANDSCAPE DETAILS	P3.3 GARAGE/ WORKSHOP	
L101 SITE IRRIGATION PLAN	P3.4 FUEL ISLAND AND GENERATOR BUILDING	
L102 SITE IRRIGATION PLAN	P3.5 STORAGE BUILDING PLUMBING	
L103 IRRIGATION DETAILS	P3.6 FUEL ISLAND SECTIONS AND SCHEDULES	
	P3.7 FUEL ISLAND AND SECTIONS	
	P3.8 FUEL ISLAND SECTIONS AND SCHEDULES	
ARCHITECTURAL DRAWINGS	ELECTRICAL DRAWINGS	
A1.0 OVERALL ARCHITECTURAL SITE PLAN	E0.01 GENERAL NOTES AND SCHEDULES	
A3.1 OFFICE BUILDING - FLOOR PLAN AND REFLECTED CEILING PLAN	E0.02 SYMBOL LEGENDS & SCHEDULES	
A3.2 OFFICE BUILDING - CANOPY PLAN AND DETAILS	E1.0 SITE PLAN ELECTRICAL	
A3.3 VEHICLE STORAGE BUILDING - FLOOR PLAN	E1.1 SITE PLAN PHOTOMETRICS	
A3.4 VEHICLE STORAGE BUILDING REFLECTED CEILING PLAN	E3.1 OFFICE BUILDING FLOOR PLAN	
A3.5 COVERD STORAGE BUILDING - FLOOR PLAN	E3.3 GARAGE/ WORKSHOP PLAN	
A3.6 GENERATOR - FLOOR PLAN AND DETAILS	E3.4 FUEL ISLAND AND GENERATOR BUILDING STORAGE BUILDING	
A3.7 FUEL ISLAND - FLOOR PLAN AND REFLECTED CEILING PLAN	E4.1 OFFICE BUILDING FLOOR PLAN	
A3.8 DUMPSTER ENCLOSURE - FLOOR PLAN AND DETAILS	E4.3 GARAGE WORKSHOP PLAN	
	E5.1 ELECTRICAL RISERS	
	E6.1 ELECTRICAL SCHEDULES	
	E9.1 GENERAL NOTES, LEGENDS & SCHEDULES	
	E9.2 GENERAL NOTES, LEGENDS & SCHEDULES	
	E9.3 GENERAL NOTES, LEGENDS & SCHEDULES	
	E9.4 GENERAL NOTES, LEGENDS & SCHEDULES	
A7.1 OFFICE BUILDING - EXTERIOR ELEVATIONS		
A7.2 GARAGE/ WORKSHOP EXTERIOR ELEVATIONS		
A7.3 STORAGE BUILDING-ELEVATIONS		
A7.4 FUEL ISLAND - ELEVATIONS AND SECTIONS		
A8.1 OFFICE BUILDING SECTION / ROOF DETAILS		
A8.2 OFFICE BUILDING ENLARGED WALL SECTIONS		
A8.3 WORKSHOP/GARAGE BUILDING SECTION		
A8.4 ENLARGED WORK SHOP WALL SECTIONS		
A9.1 OFFICE BUILDING WALL TYPES AND DETAILS		
A10.1 DOOR SCHEDULE AND DETAILS		
A10.2 WINDOW AND LOUVER TYPES / DETAILS		
A10.3 WINDOW AND LOUVER TYPES / DETAILS		
A11.1 INTERIOR BUILDING ELEVATIONS		
A11.2 SCHEDULES AND TYPICAL MOUNTING HEIGHTS		
A12.1 OFFICE BUILDING DETAILS		
A12.2 FUEL ISLAND DETAILS		



THREE POINTS MAINTENANCE FACILITY  
ORANGE COUNTY ROADS AND DRAINAGE DIVISION  
4650 Young Pine Road  
Orlando, Florida 32829



PROJECT TITLE
09-19-2013 95% ISSUE
01-17-2014 100% ISSUE
3.04/15/14 ADDENDUM #3

REVISIONS
Date: 01-17-2014
Drawn: MCH- AP-Z
Chk: MLM
Aprvd: MLM
Project: 97133-10

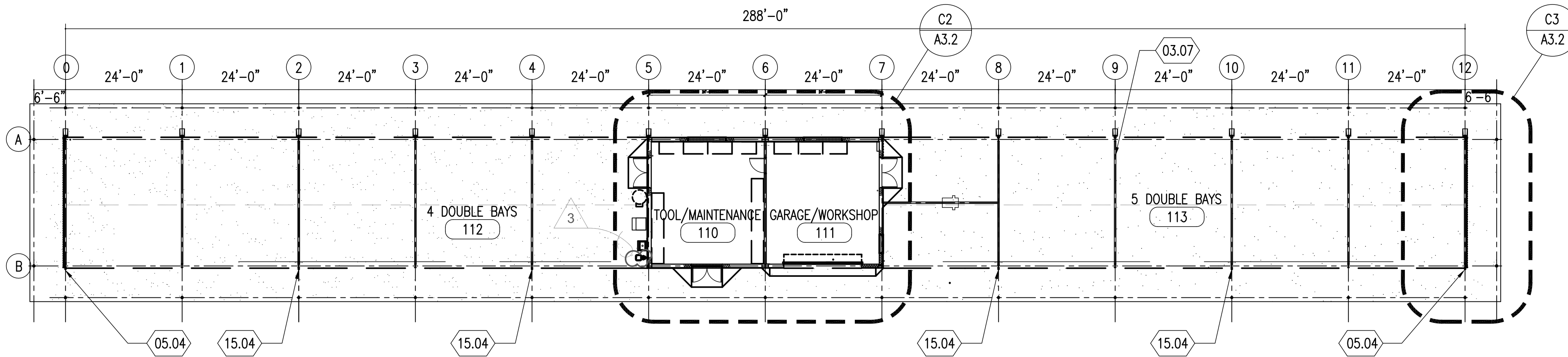
DRAWING DATA
MIGUEL LAZARO MARTIN AR 8255
SEAL

A0.1
SHEET NO.
PHASE: PERMITTING
CADD FILE: THREE P

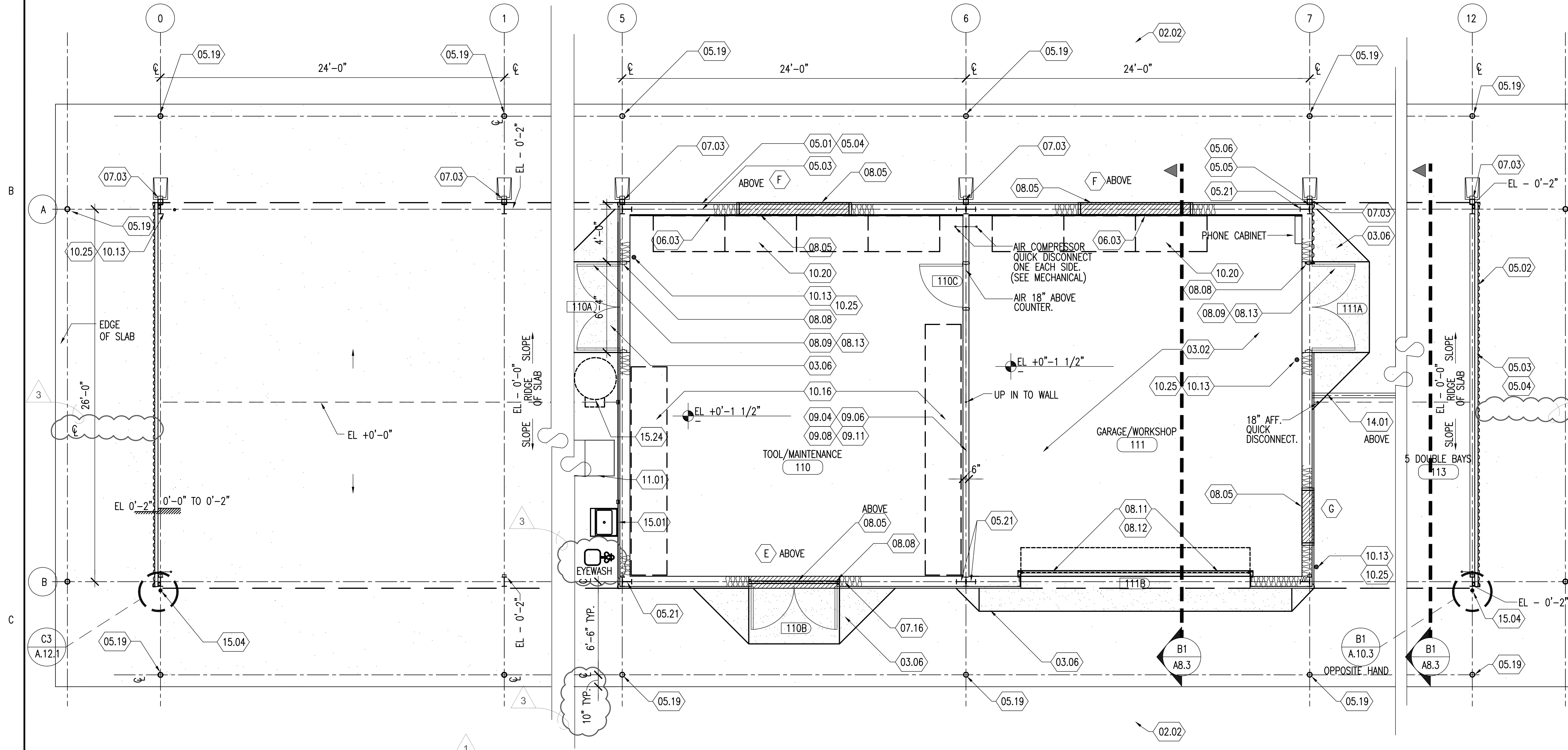


### SHEET NOTE LIST

- 02.02 ASPHALT PAVING OVER BASE & COMPACT FILL
- 03.02 CONCRETE SLAB ON GRADE SEE STRUCTURAL/CIVIL DWGS.
- 03.06 CONCRETE RAMP - 1:12 SLOPE UP
- 03.07 CONCRETE CONTROL JOINT - SEE STRUCTURAL DWGS.
- 04.10 8" "SPECTRA GLAZED" FINISHED CMU, OR APPROVED EQUAL
- 05.01 PRE-ENGINEERED METAL WALL PANELS
- 05.02 5" STEEL PIPE "U" SHAPED BOLLARD
- 05.03 TYP. PRE-ENGINEERED WALL GIRT BY METAL BUILDING MFG.
- 05.04 TYP. PRE-ENGINEERED METAL CORRUGATED PANELS WITH LAP SEAMS. COLOR TO BE SELECTED BY ARCHITECT
- 05.05 PRE-ENGINEERED STEEL COLUMN BY METAL BUILDING MANUFACTURER.
- 05.06 PRE-ENGINEERED STEEL COLUMN BASE PLATE.
- 05.19 5'-0" HIGH 8" DIA GALV. STEEL PIPE FILLED W/3000 PSI CONCRETE W/ PLASTIC VINYL SLEEVE (SAFETY YELLOW) "POSTGUARD" OR APPROVED EQUAL
- 05.21 PRE-ENGINEERED PORTAL FRAME PROVIDED METAL BUILDING MANUFACTURER.
- 06.03 3/4" F.R. PLYWOOD PAINTED TO MATCH METAL PANELS
- 07.03 RAINLEADER WITH METAL STRAPS BY METAL BUILDING MANUFACTURER. TYPICAL
- 07.12 TYP. PROVIDE "Z" FLASHING AT ALL WINDOW, DOOR AND LOUVER OPENINGS
- 07.16 R-19 BLANKET INSULATION & VELASTOMERIC SEALANT. HOLD IN PLACE WITH CROSS GALV. WIRE
- 08.05 C/S GROUP DC7034/A4080 LOUVER. SEE DETAIL C2/A10.3 OR APPROVED EQUAL
- 08.08 HOLLOW METAL DOOR FRAME TYPICAL SEE DOOR SCHEDULE
- 08.09 A60 GALV. FACE SHEET HOLLOW MTL. DOOR, 14 GA. OVER SOLID INSULATED CORE. SEE SPECIFICATIONS
- 08.11 INSULATED OVERHEAD DOOR, TRACK, AND ELECTRIC OPERATOR
- 08.12 GARAGE / OVERHEAD DOOR SHALL HAVE A WIND RATED ASSEMBLY AND COMPLY WITH MIAMI-DADE COUNTY PRODUCT CONTROL APPROVAL SYSTEM OR THE FLORIDA BUILDING CODE APPROVAL SYSTEM. THE DOOR ASSEMBLIES SHALL RESIST CYCLIC PRESSURES, STATIC PRESSURES AND MISSILE IMPACT LOADS PER TEST PROTOCOLS. GARAGE DOORS TESTED WIND COMPLYING WITH WIND PRESSURES AND TIME PERIODS LISTED IN THE STRUCTURAL DRAWINGS DESIGN CRITERIA - THE MANUFACTURER SHALL SUBMIT SIGNED & SEALED ENGINEERING DRAWINGS PREPARED BY A FLORIDA REGISTERED PROFESSIONAL ENGINEER BEARING HIS/HER SIGNATURE & SEAL
- 08.13 DOOR HARDWARE: FINISH, STYLE AND TYPE SEE SPECS  
ALL HARDWARE IS TO COMPLY WITH THE CURRENT AMERICAN WITH DISABILITIES ACT (ADA) AND FLORIDA BUILDING CODE AND FLORIDA ACCESSIBILITY CODE FOR BUILDING CONSTRUCTION. REFER TO SPECIFICATIONS SECTION 08700 FOR HARDWARE SCHEDULE.
- 09.04 4" & 6" GALV. METAL STUDS AT 16" O.C.
- 09.06 METAL STUD SPACING SHALL BE 16" O.C. AND ALL STUDS SHALL BE 20 GAUGE
- 09.08 FASTEN STUD AT FLOOR AND GIRT ABOVE
- 09.11 5/8" GWB, PAINT
- 10.13 WALL MOUNTED PER NFPA 10, STANDARD FOR PORTABLE FIRE EXTINGUISHERS, 48" MAX. MOUNTING HEIGHT TO TOP OF EXTINGUISHER TYP.
- 10.16 METAL SHELVES. SEE SPECIFICATION SECTION 10670
- 10.20 ADJUSTABLE STEEL WORK BENCH. TOTAL OF (7) 30"x60" MODEL# WBA-1-3060W WITH HARDWOOD TOP OVER STEEL TOP FROM TENNSCO OR EQUAL
- 10.25 TYPICAL AT ALL WALL MOUNTED FIRE EXTINGUISHERS: COMPLY WITH MOUNTING HEIGHTS AND SIGNAGE PER NFPA 10
- 11.01 ICE MACHINE: "MANITOWOC" INDIGO SERIES: i-450 ICE MACHINE ON B-400 STORAGE BIN ICE CAPACITY UP TO 450lbs/24HRS. SEE PLUMBING SCHEDULE FOR WATER FILTER. ELECTRICAL REQ'D: 115/60/1 ON 20 AMP BREAKER OR APPROVED EQUAL
- 14.01 TWO (2) TON ELECTRIC HOIST SEE SPECIFICATIONS
- 15.01 S.S. SINK. SEE PLUMBING DWGS.
- 15.04 RIGID COPPER WATER SUPPLY AND FAUCET WRAPPED IN INSULATION WITHIN A 3" DIA. GALV. STEEL BOLLARD. SEE DETAIL C3/A12.1. SEE PLUMBING DWGS.
- 15.16 RECESSED QUICK DISCONNECT HOSE BIB & CABINET
- 15.24 AIR COMPRESSOR



**A1 VEHICLE STORAGE BUILDING**  
1/16" = 1' - 0"



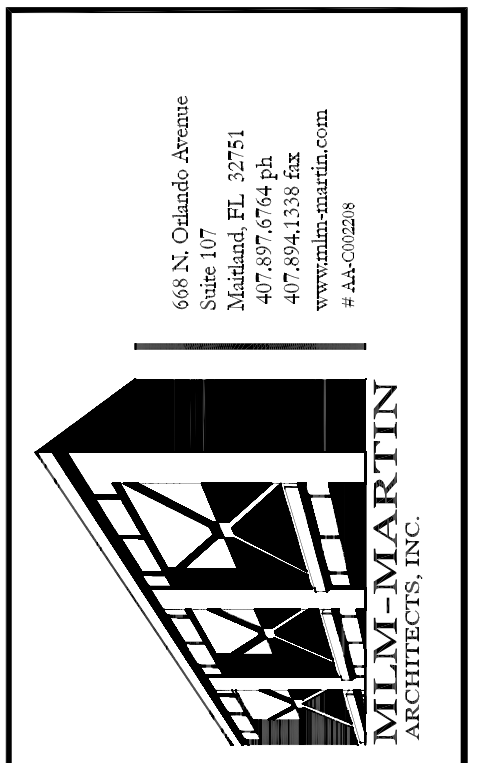
**C1 END BAY OF VEH. STO.**  
1/4" = 1' - 0"

**C2 VEHICLE STORAGE BUILDING**  
1/4" = 1' - 0"

**C3 END BAY OF VEHICLE STORAGE**  
1/4" = 1' - 0"

GARAGE / WORKSHOP AND EQUIPMENT TOOL STORAGE / JOIST BAYS

Y14-782 Addendum No. 3 4/24/14



THREE POINTS MAINTENANCE FACILITY  
ORANGE COUNTY ROADS AND DRAINAGE DIVISION  
4651 YOUNG PINE ROAD  
ORLANDO, FLORIDA 32829  
ORANGE COUNTY, FLORIDA

VEHICLE STORAGE - FLOOR PLAN



NO.	DATE	ISSUE	BY
09-19-2013	95%	ISSUE	CHC
01-17-2014	100%	ISSUE	
02/28/14	CORR.#1 & ADD.#1		
04/15/14	ADDENDUM #3		

REVISIONS	
Date:	01-17-2014
Drawn:	MCH- AP-Z
Chck:	MLM
Apprvd:	MLM
Project:	97133-10

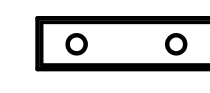
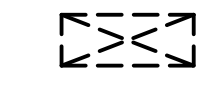

DRAWING DATA	
MIGUEL LAZARO MARTIN	AR 8255

SEAL
------

<b>A3.3</b>
SHEET NO.
PHASE: PERMITTING
CADD FILE: THREEA.B.3

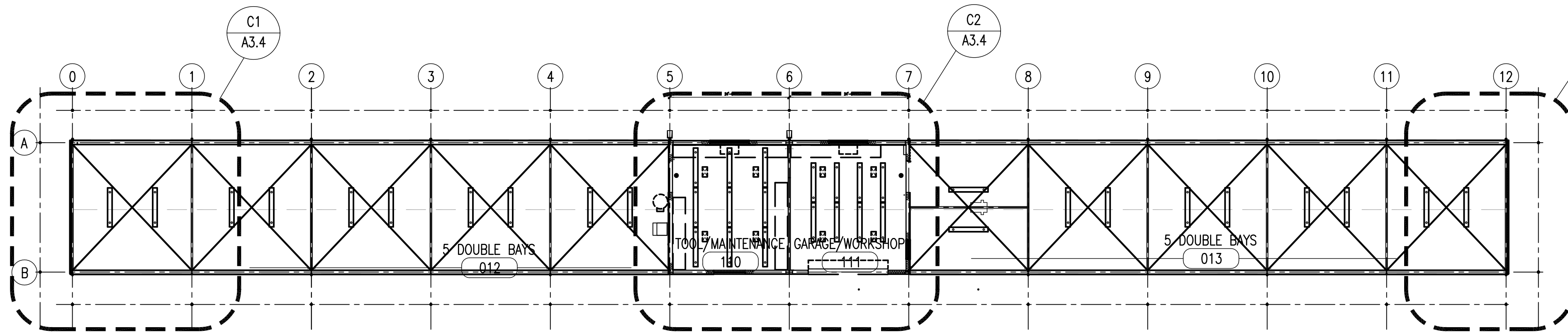
THE DRAWINGS AND SPECIFICATIONS AS AN INSTRUMENT OF SERVICES ARE AND SHALL REMAIN THE PROPERTY OF THE ARCHITECT. THE PROJECT FOR WHICH THEY ARE MADE IS EXERCISED OR NOT, ANY MODIFICATIONS OR REVISIONS TO THE DOCUMENT, OR ANY REPRODUCTION OF THE DOCUMENT, FOR USE AT ANY OTHER LOCATION OR FOR ANY OTHER PURPOSE WITHOUT PRIOR REVIEW, APPROVAL, OR CONSENT OF THE ARCHITECT IS STRICTLY PROHIBITED.

### CEILING SYMBOL LEGEND

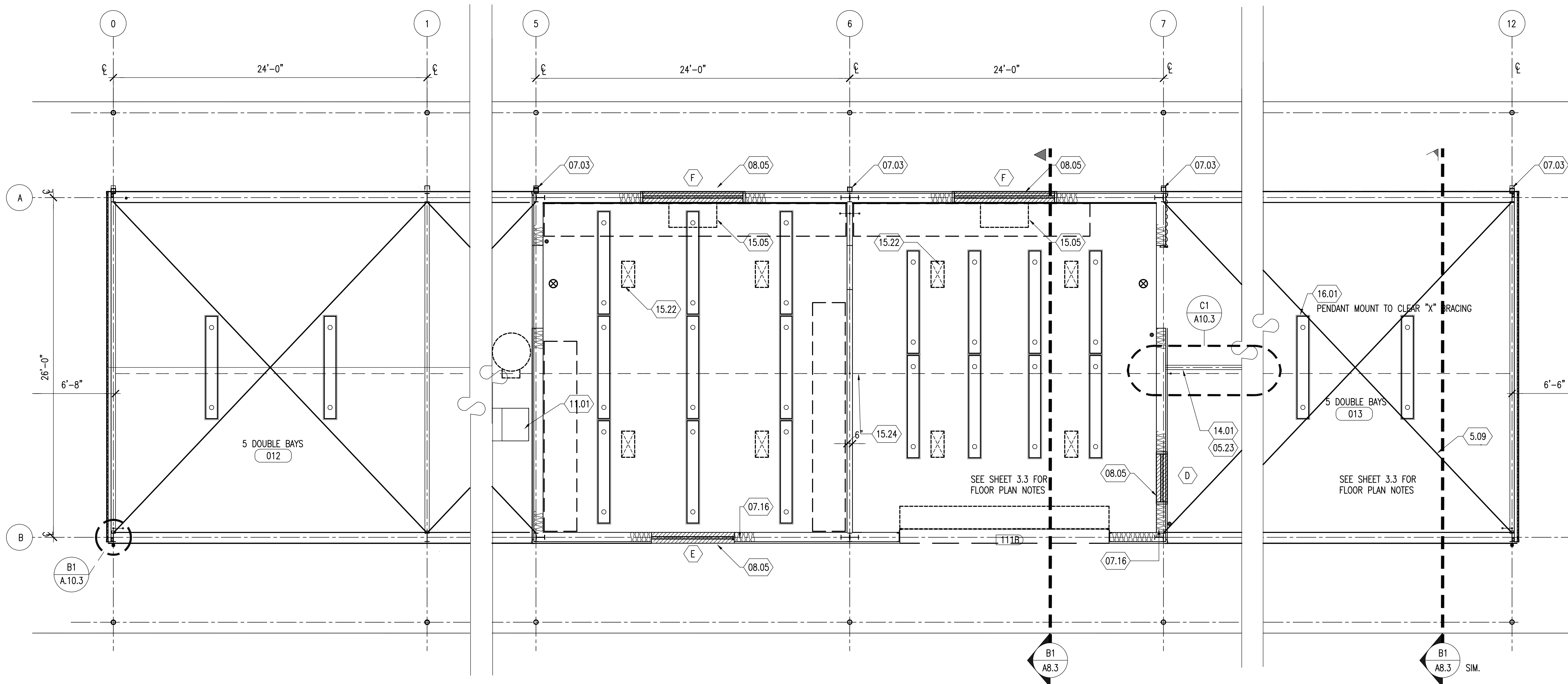
-  PENDANT MOUNTED FLUORESCENT LIGHT FIXTURE. SEE ELECTRICAL DWGS.
-  PENDANT MOUNTED UNIT HEATER. SEE MECHANICAL
-  EXIT SIGN

### SHEET NOTE LIST

- 05.09 STEEL "X" BRACING - LOCATE IN UPPER 1/3 PORTION OF BEAM. (SEE STRUCTURAL)
- 05.23 PRE-ENGINEERED STEEL RUNWAY HOIST BEAM
- 07.03 RAINLEADER WITH METAL STRAPS BY METAL BUILDING MANUFACTURER. TYPICAL
- 07.16 R-19 BLANKET INSULATION & VELASTOMERIC SEALANT. HOLD IN PLACE WITH CROSS GALV. WIRE
- 08.05 C/S GROUP DC7034/A4080 LOUVER. SEE DETAIL C2/A10.3 OR APPROVED EQUAL
- 11.01 ICE MACHINE: "MANITOWOC" INDIGO SERIES: 1-450 ICE MACHINE ON B-400 STORAGE BIN. ICE CAPACITY UP TO 450lbs/24HRS. SEE PLUMBING SCHEDULE FOR WATER FILTER. ELECTRICAL REQ'D: 115/60/1 ON 20 AMP BREAKER. OR APPROVED EQUAL
- 14.01 TWO (2) TON ELECTRIC HOIST SEE SPECIFICATIONS
- 15.05 EXHAUST FAN. SEE MECHANICAL DOCUMENTS.
- 15.22 TYP. UNIT HEATER. (SEE MECHANICAL)
- 16.01 TYP. LIGHT FIXTURE SEE ELECTRICAL DOCUMENTS.



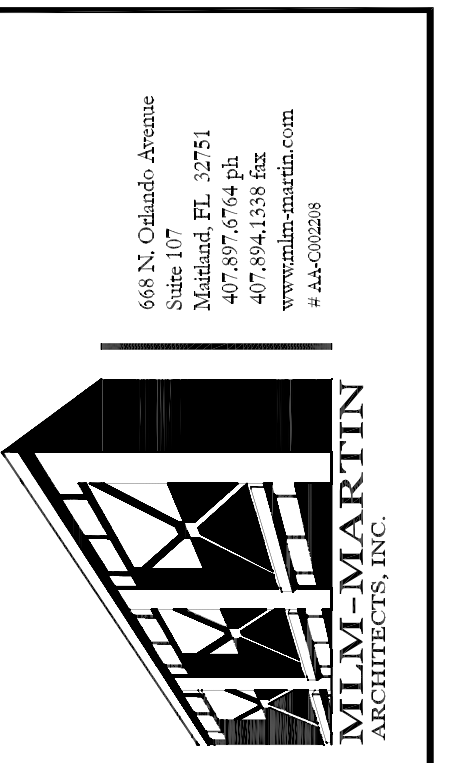
**A1** VEHICLE STORAGE BUILDING  
1/16" = 1' - 0"  
NORTH



**C1** END BAY  
1/4" = 1' - 0"  
NORTH

**C2** GARAGE/WORKSHOP AND EQUIPMENT/TOOL STORAGE BAYS  
1/4" = 1' - 0"  
NORTH

**C3** END BAY OF VEHICLE STORAGE  
1/4" = 1' - 0"  
NORTH



THREE POINTS MAINTENANCE FACILITY  
ORANGE COUNTY ROADS AND DRAINAGE DIVISION  
4651 YOUNG PINE ROAD  
ORLANDO, FLORIDA 32829  
ORANGE COUNTY, FLORIDA

VEHICLE STORAGE BUILDING - REFLECTED CEILING PLAN



NO.	DATE	ISSUE	BY	CHK.
09-19-2013	95%	ISSUE		
01-17-2014	100%	ISSUE		
04/15/14		ADDENDUM #3		

REVISIONS
Date: 01-17-2014
Drawn: MCH- AP-Z
Chck: MLM
Apprvd: MLM
Project: 97133-10

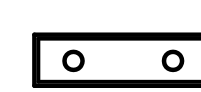
DRAWING DATA  
MIGUEL LAZARO MARTIN  
AR 8255

SEAL

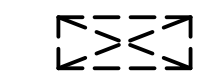
**A3.4**

SHEET NO.  
PHASE: PERMITTING  
CADD FILE: THREE P

### CEILING SYMBOL LEGEND



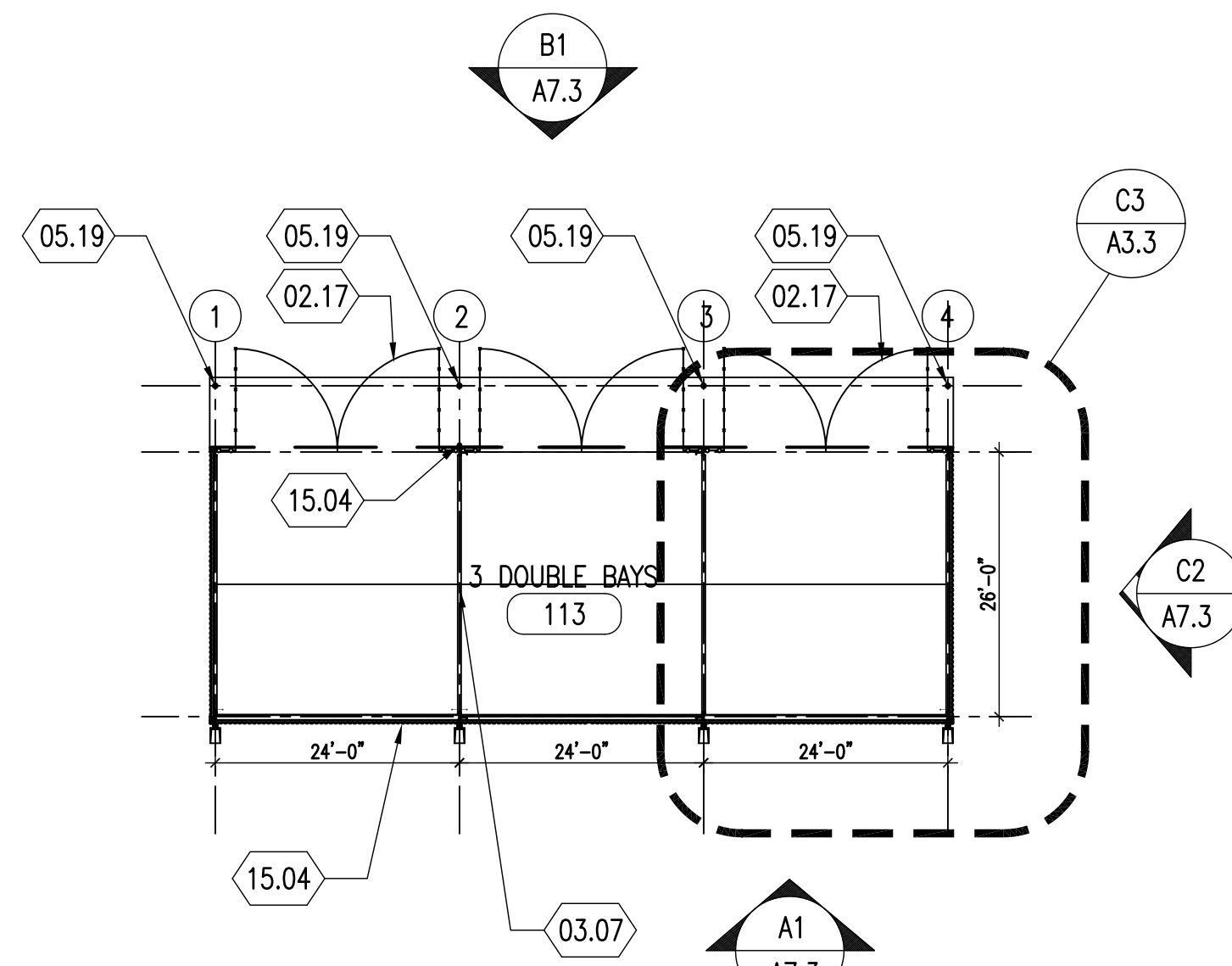
PENDANT MOUNTED FLUORESCENT LIGHT FIXTURE. SEE ELECTRICAL DWGS.



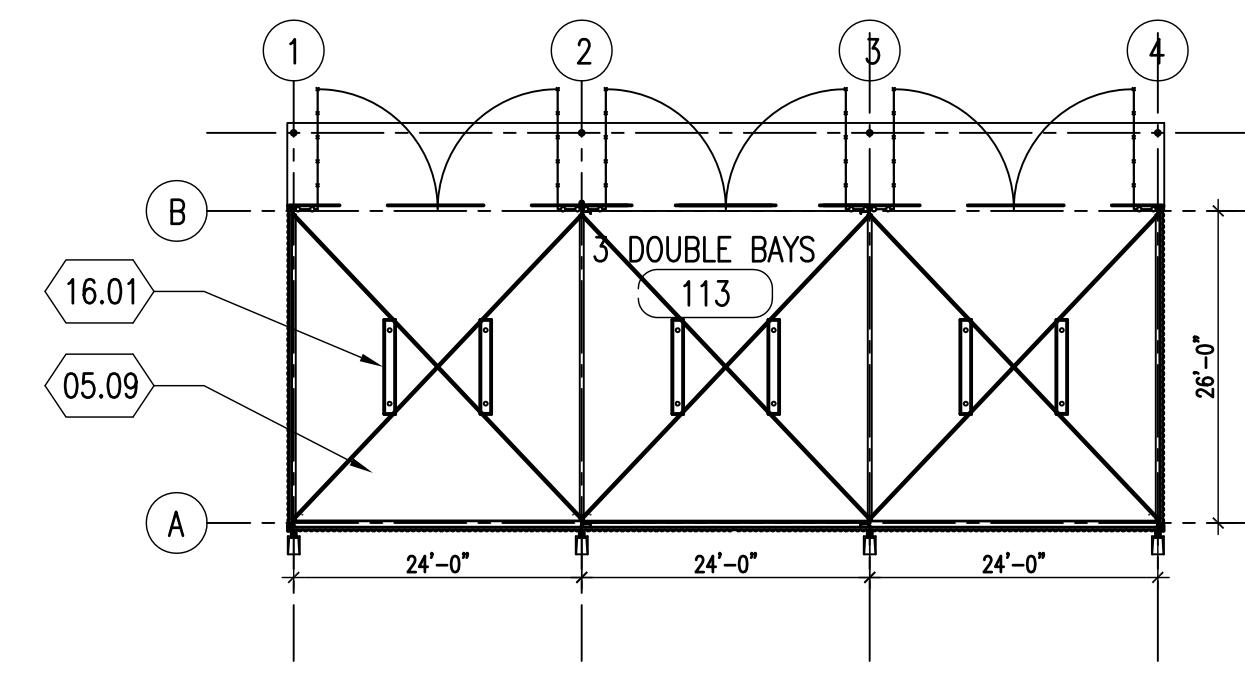
PENDANT MOUNTED UNIT HEATER. SEE MECHANICAL.

### SHEET NOTE LIST

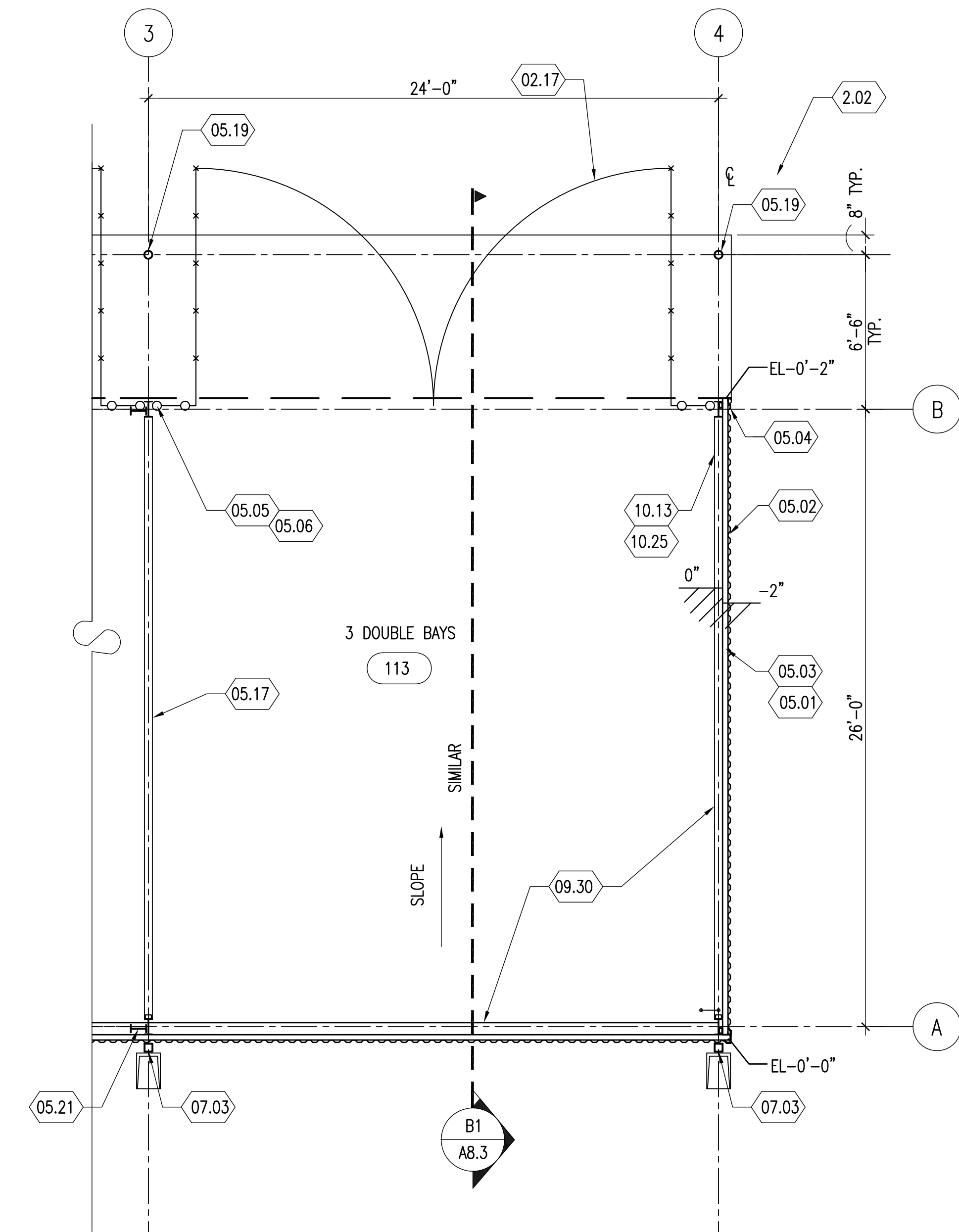
- (02.02) ASPHALT PAVING OVER BASE & COMPACT FILL
- (02.17) 8" H. BLACK VINYL CHAIN LINK WITH PAIRS OF 8'H. X 11' WIDE BLACK VINYL CHAIN LINK GATES WITH HASP.
- (03.07) CONCRETE CONTROL JOINT SEE STRUCTURAL DRAWINGS
- (05.01) PRE-ENGINEERED METAL WALL PANELS
- (05.03) TYP. PRE-ENGINEERED WALL GIRT BY METAL BUILDING MFG.
- (05.04) TYP. PRE-ENGINEERED METAL CORRUGATED PANELS WITH LAP SEAMS. COLOR TO BE SELECTED BY ARCHITECT
- (05.05) PRE-ENGINEERED STEEL COLUMN BY METAL BUILDING MANUFACTURER.
- (05.06) PRE-ENGINEERED STEEL COLUMN BASE PLATE.
- (05.09) STEEL X-BRACING LOCATE IN UPPER 1/3 PORTION OF BEAM (SEE STRUCTURAL)
- (05.17) PRE-ENGINEERED STEEL BUILDING BY METAL BUILDING MANUFACTURER
- (05.19) 5'-0" HIGH 4" DIA GALV. STEEL PIPE FILLED W/3000 PSI CONCRETE W/ PLASTIC VINYL SLEEVE (SAFETY YELLOW) "POSTGUARD" OR APPROVED EQUAL.
- (05.21) PRE-ENGINEERED PORTAL FRAME PROVIDED METAL BUILDING MANUFACTURER.
- (07.03) RAINLEADER WITH METAL STRAPS BY METAL BUILDING MANUFACTURER. TYPICAL
- (07.16) R-19 BLANKET INSULATION & VELASTOMERIC SEALANT. HOLD IN PLACE WITH CROSS GALV. WIRE
- (10.13) WALL MOUNTED PER NFPA 10, STANDARD FOR PORTABLE FIRE EXTINGUISHERS, 48" MAX. MOUNTING HEIGHT TO TOP OF EXTINGUISHER TYP.
- (10.25) TYPICAL AT ALL WALL MOUNTED FIRE EXTINGUISHERS. COMPLY WITH MOUNTING HEIGHTS AND SIGNAGE PER NFPA 10
- (15.04) RIGID COPPER WATER SUPPLY AND FAUCET WRAPPED IN INSULATION WITHIN A 3" DIA. GALV. STEEL BOLLARD. SEE DETAIL C3/A12.1. SEE PLUMBING DWGS.
- (16.01) TYP. LIGHT FIXTURE SEE ELECTRICAL DOCUMENTS



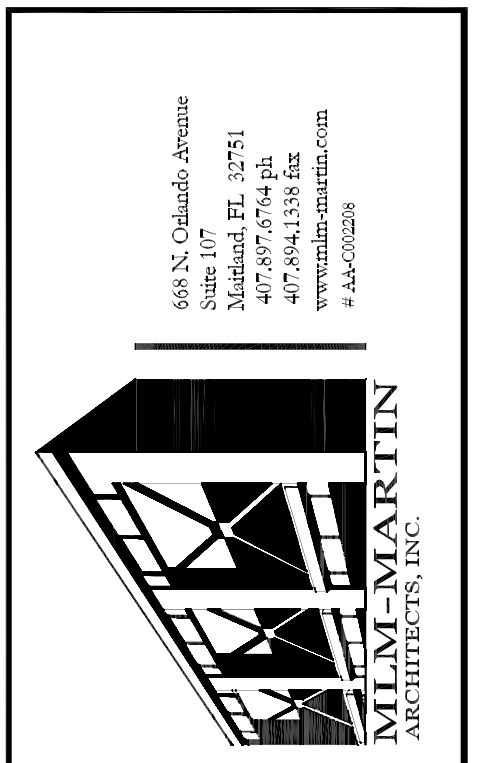
**A1 COVERED STORAGE BLDG.-FLOOR PLAN**  
 1/16" = 1' - 0"



**B2 COVERED STORAGE BLDG-REFLECTED CLG. PLAN**  
 1/16" = 1' - 0"



**C3 END BAY OF COVERED STORAGE**  
 1/4" = 1' - 0"



THREE POINTS MAINTENANCE FACILITY  
 ORANGE COUNTY ROADS AND DRAINAGE DIVISION  
 4651 YOUNG PINE ROAD  
 ORLANDO, FLORIDA 32829  
 ORANGE COUNTY, FLORIDA



PROJECT TITLE			
NO.	DATE	ISSUE	BY
09-19-2013	95%	ISSUE	CHK
01-17-2014	100%	ISSUE	
04/04/14		ADDENDUM #2	
04/15/14		ADDENDUM #3	

REVISIONS	
Date:	01-17-2014
Drawn:	MCH- AP-Z
Chck:	MLM
Apprvd:	MLM
Project:	97133-10

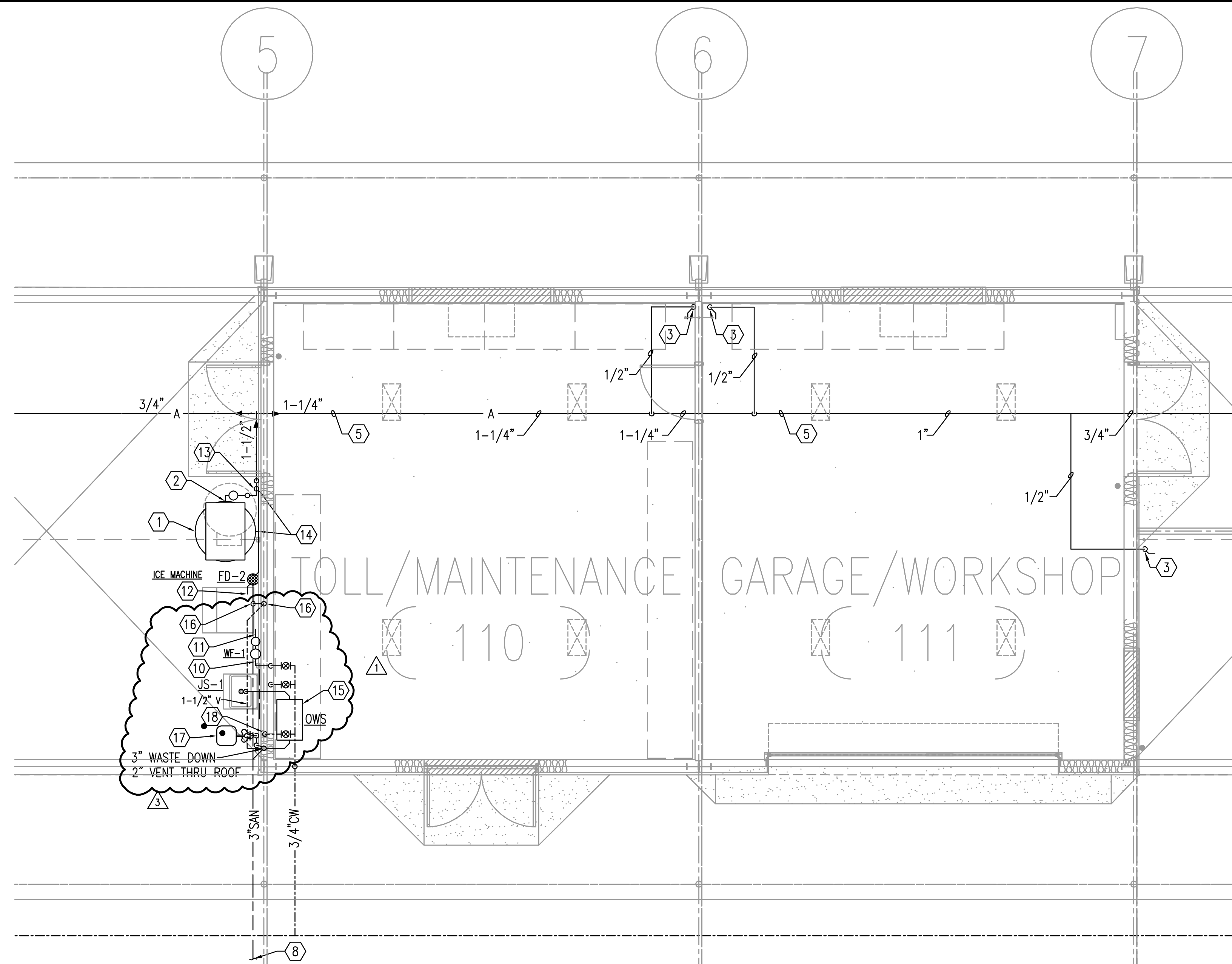
DRAWING DATA  
 MIGUEL LAZARO MARTIN  
 AR 8255

SEAL

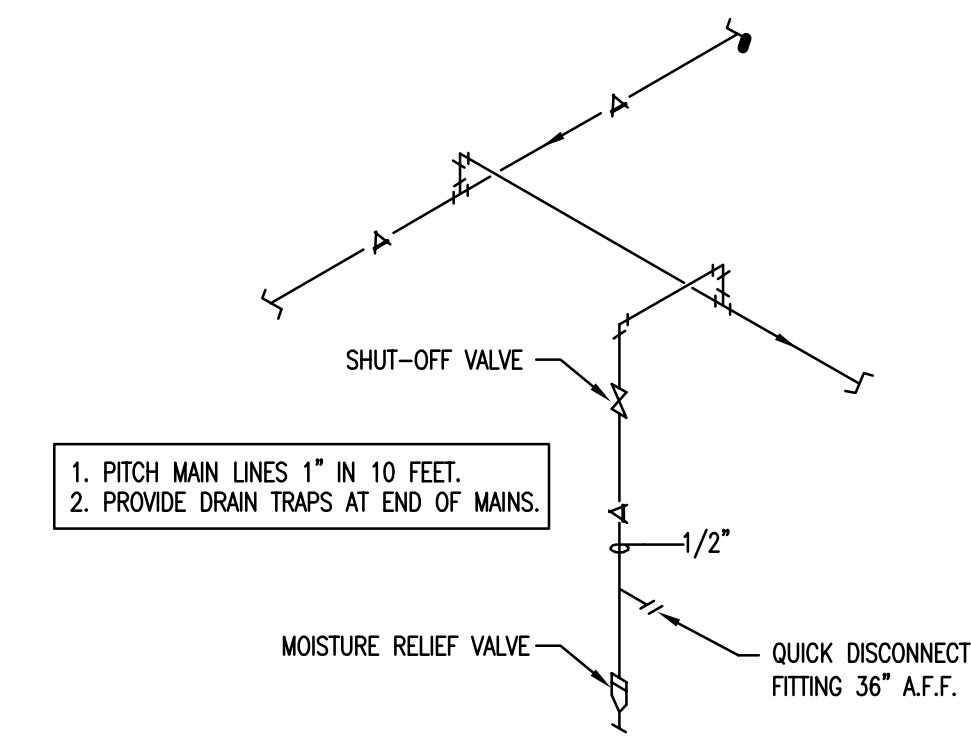
**A3.5**

SHEET NO.  
 PHASE: PERMITTING  
 CADD FILE: THREEA3.3



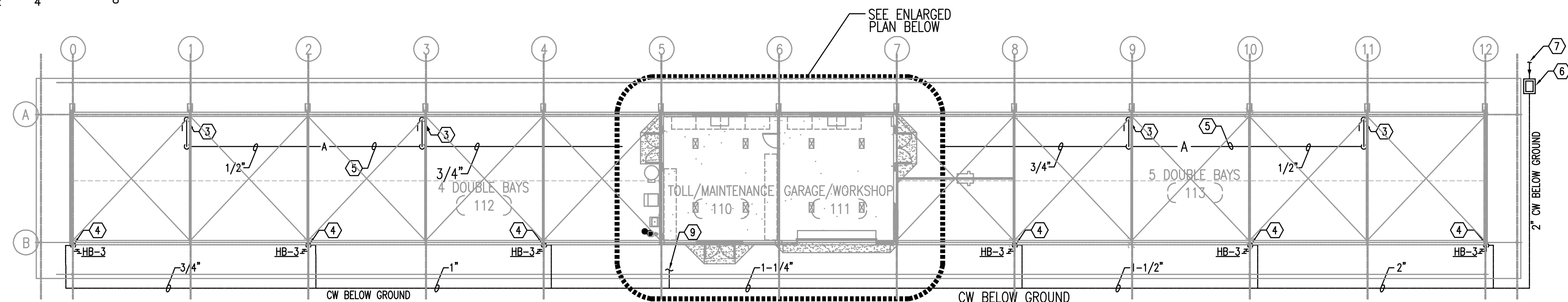


**GARAGE/WORKSHOP & EQUIPMENT/TOOL STORAGE BAYS - PLUMBING**  
 1/4" = 1'-0"  
 0 2' 4' 8'



**AIR CONNECTION DETAIL**  
 NTS

**OIL/WATER SEPARATOR SIZING CALCULATION**  
 MIN. UNDER-SINK OWS SIZE = [COMBINED SINK STORAGE VOLUME (UNITS IN GALLONS)] \* 0.75  
 = 1.0 MINUTE (SINK/FIXTURE DECANT TIME)  
 = 24 GALLONS \* .75  
 = 18 GAL/MIN REQUIRED, 20 GPM PROVIDED.

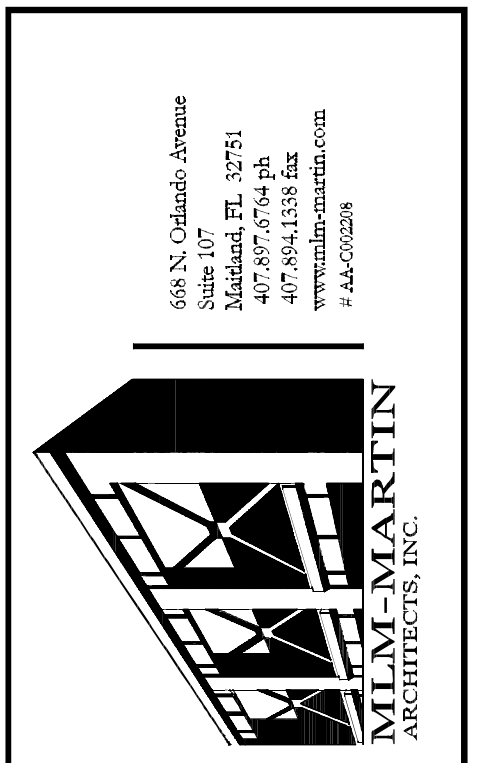


**VEHICLE STORAGE BUILDING - PLUMBING**  
 1/16" = 1'-0"  
 0 8' 16' 32'

**GENERAL NOTES**  
 1) REFER TO GENERAL NOTES FOR THIS DISCIPLINE.  
 2) REFER TO SPECIFICATIONS.  
 3) PAINT ALL AIR PIPING 1-PRIMER AND 1-FINISH COAT.

**HEX NOTES**  
 1) PROVIDE AIR COMPRESSOR AS SCHEDULED.  
 2) CONNECT 1-1/2" AIR SUPPLY LINE TO AIR COMPRESSOR.  
 3) PROVIDE 1/2" AIR DROP DOWN TO SINGLE QUICK DISCONNECT FITTING 36" A.F.F. AIR DROP SHALL TAKE OFF FROM TOP OF AIR MAIN WITH DRAIN VALVE AT BOTTOM OF PIPE DROP. SEE DETAIL THIS SHEET.  
 4) HOSE BIBB WITH 3/4" CW FROM BELOW GRADE, INSULATED AND ENCASED WITHIN 3" SCHEDULE 40, HOT DIPPED GALVANIZED STEEL BOLLARD PER DETAIL ON ARCHITECTURAL DRAWING A12.1, C3 HOSE BIBB DETAIL.  
 5) COMPRESSED AIR PIPING IN CEILING JOIST SPACE.  
 6) WATER SERVICE SHUT OFF VALVE. SEE VALVE BOX DETAIL ON SHEET P3.0.  
 7) 2" CW BELOW GRADE. SEE CIVIL FOR CONTINUATION.  
 8) 3" SAN BELOW GRADE. FOR CONT. SEE CIVIL PLANS. INVERT ELEV. -2'-6" B.F.F.  
 9) 3/4" CW TO JANITOR SINK (JS-1) AND ICE MACHINE. REFER TO ENLARGED PLAN THIS SHEET.

10) ROUTE CW PIPING TO PRE-FILTER AND FILTER (WF-1).  
 11) ROUTE CW PIPING TO ICE MACHINE INLET.  
 12) ROUTE ICE MACHINE DRAIN LINE TO FLOOR DRAIN.  
 13) PROVIDE CONDENSATE TRAP.  
 14) ROUTE DRAIN PIPING FROM CONDENSATE TRAP AND COMPRESSOR TO FLOOR DRAIN.  
 15) OWS - OIL/WATER SEPARATOR CAPABLE OF 20 GPM DISCHARGE RATE. ABOVE GROUND ACID RESISTANT COATED STEEL, 3" INLET/OUTLET. BASIS OF DESIGN: ZURN MODEL Z1186, SIZE 500.  
 16) 1-1/2" VENT OFF TOP OF SANITARY A MINIMUM OF 6" AND ROUTED UP WITHIN WALL AND HIGH IN BAY TO VTR.  
 17) EFW - EYE/FACE WASH - STAINLESS STEEL BOWL AND DUST COVER, YELLOW GALVANIZED STEEL PIPING. BASIS OF DESIGN: BRADLEY MODEL S19214-B-A-2-B-E-A.  
 18) PROVIDE 3/4" CW PIPING DOWN WALL. TRANSITION TO 1/2" CW PIPE FOR CONNECTION TO EPW.



**THREE POINTS MAINTENANCE FACILITY**  
**ORANGE COUNTY PUBLIC WORKS COMPLEX**  
 4651 YOUNG PINE ROAD  
 ORLANDO, FLORIDA 32829  
 ORANGE COUNTY, FLORIDA  
 GARAGE/WORKSHOP PLAN - PLUMBING



**PROJECT TITLE**

NO.	DATE	ISSUE	BY	CHK
09-19-2013	95%	ISSUE		
01-17-2014	100%	ISSUE		
02/28/14		CORR.#1& ADD.#1		
04/15/14		ADDENDUM #3		

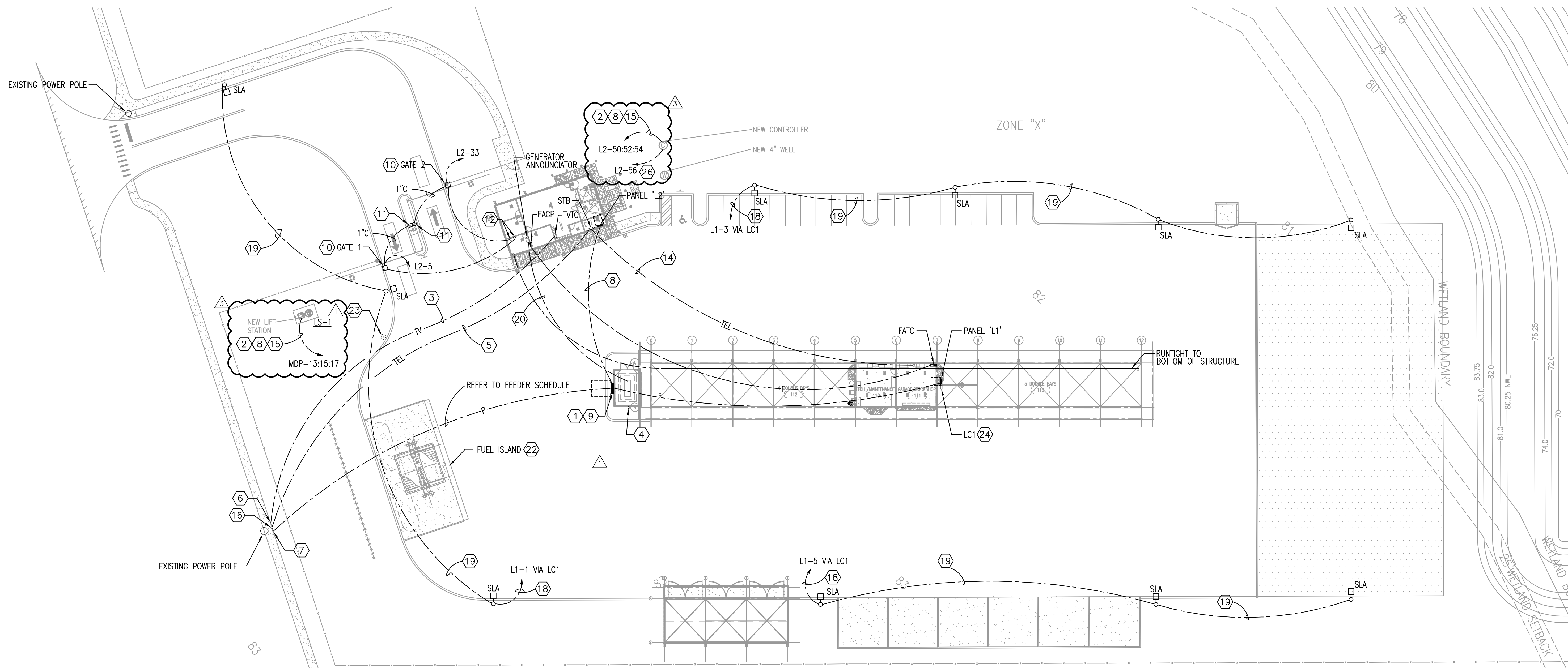
**REVISIONS**

Date:	01-17-2014
Drawn:	RD
Chck:	BWP
Apprvd:	
Project:	2013-127

**DRAWING DATA**

SEAL  
 P3.3  
 SHEET NO.  
 PHASE: PERMITTING  
 CADD FILE: THREE P

**mp** MATERN PROFESSIONAL ENGINEERING, INC.  
 ENG. BUS. NO. EB-0009096  
 CERT. OF AUTH. NO. 5096  
 130 Candace Drive  
 Maitland, FL 32751-3331  
 PHONE (407) 740-5020  
 FAX (407) 740-0365  
 MPE JOB #: 2013-127



**SITE PLAN - ELECTRICAL**  
 1"=30'-0"  
 0 15 30 60

**GENERAL NOTES**

- REFER TO GENERAL NOTES FOR THIS DISCIPLINE.
- REFER TO SPECIFICATIONS.
- NO MULTI-WIRE BRANCH CIRCUITS ARE TO BE USED. EACH CIRCUIT IS TO HAVE SEPARATE INDIVIDUAL NEUTRAL.
- PROVIDE LIGHTNING PROTECTION SYSTEM ON ALL BUILDINGS INCLUDING FUEL ISLAND STRUCTURE IN ACCORDANCE WITH SPECIFICATIONS. LIGHTNING PROTECTION SYSTEM SHALL BE IN COMPLIANCE WITH NFPA 780. SYSTEM SHALL BE PROVIDED WITH U.L. MASTER LABEL. INSTALLER SHALL BE L.P.I. CERTIFIED. ALL DOWN CONDUCTORS SHALL BE CONCEALED WHERE POSSIBLE. SHOP DRAWINGS SHALL BE PROVIDED AND APPROVED BY ENGINEER.
- NO MULTI-WIRE BRANCH CIRCUITS ARE TO BE USED. EACH CIRCUIT IS TO HAVE SEPARATE INDIVIDUAL NEUTRAL.
- REFER TO MECHANICAL EQUIPMENT FEEDER AND PANEL SCHEDULES FOR ELECTRICAL REQUIREMENTS FOR MECHANICAL AND PLUMBING EQUIPMENT INCLUDING CIRCUIT NUMBERS.
- MOUNT ALL DISCONNECT SWITCHES FOR MECHANICAL EQUIPMENT WITHIN SIX (6) FEET OF EQUIPMENT AS REQUIRED BY APPLICABLE CODES AND STANDARDS. RELOCATE DISCONNECT SWITCHES SHOWN ON DRAWINGS TO LOCATION REQUIRED TO COMPLY WITH THIS REQUIREMENT AND APPLICABLE CODES/STANDARDS. LOCATIONS FOR DISCONNECT SWITCHES SHOWN ON DRAWINGS IS FOR GENERAL INFORMATION ONLY.

**NOTE:** THERE SHALL BE NO ROOF PENETRATIONS. THE CONTRACTOR SHALL RUN THE LIGHTNING PROTECTION COPPER DOWNLEADS INSIDE PVC CONDUITS THAT TURN OUT OF THE WALL 18"-24" BELOW THE BOTTOM OF THE ROOF STRUCTURE. THE DOWNLEADS WILL CHANGE OVER TO ALUMINUM UPON EXITING THE CONDUITS AND PRIOR TO CONTACTING THE ROOF. AFTER EXITING THE CONDUITS, THE CONDUCTORS WILL GENTLY BEND AND LOOP FROM BELOW THE ROOF STRUCTURE TO THE TOP SURFACE OF IT. THE AIR TERMINALS AND CONDUCTORS WILL BE SURFACE MOUNTED AND INSTALLED PER NFPA. THE CONTRACTOR SHALL SUBMIT SHOP DRAWINGS THAT ILLUSTRATE THIS.

**HEX NOTES**

- NEW METER, C.T. CABINET, ATS AND MDP. REFER TO POWER RISER DIAGRAM.
- REFER TO MECHANICAL FEEDER SCHEDULE.
- TWO (2) 2" CONDUIT WITH PULL STRING.
- REFER TO DRAWING E3.1 FOR GENERATOR ENCLOSURE.
- ONE (1) 2" CONDUIT WITH PULL STRING.
- COORDINATE EXACT LOCATION/REQUIREMENTS WITH CABLE COMPANY.
- SECONDARY STUB-UP. COORDINATE EXACT REQUIREMENTS WITH UTILITY COMPANY. SEE POWER RISER DIAGRAM.
- REFER TO CIVIL DRAWINGS FOR PAVING AND TRENCH DETAILS. TYPICAL FOR ALL UNDERGROUND CONDUIT RUNS.
- REFER TO DETAIL DRM3 ON DRAWING E9.2.
- CONNECT GATE CONTROLLER. COORDINATE EXACT ELECTRICAL REQUIREMENTS FOR KEYPAD AND 3 BUTTON GATE CONTROL WITH GATE SHOP DRAWINGS. THE CONTRACTOR SHALL PROVIDE ALL CONDUIT & WIRING PER GATE MANUFACTURER'S RECOMMENDATIONS.
- DUAL HEIGHT KEYPAD. INSTALL PER MANUFACTURER'S RECOMMENDATION.
- PROVIDE AND INSTALL 3 BUTTON GATE CONTROL FOR EACH GATE. FLUSH MOUNT 36" AFF TO BOTTOM. SEE SHEET E3.1 FOR LOCATION.
- DRY TYPE BOOST TRANSFORMER. SEE POWER RISER DIAGRAM. COORDINATE PAD REQUIREMENTS WITH STRUCTURAL.
- TWO (2) 2" CONDUITS WITH PULL STRINGS. STUB CONDUITS UP 2" ABOVE GRADE/SLAB.
- REFER TO CIVIL AND LANDSCAPE PLANS (C408 AND L103) FOR ADDITIONAL REQUIREMENTS.
- COORDINATE EXACT LOCATION REQUIREMENTS WITH TELEPHONE COMPANY.
- ONE (1) 1 1/4" CONDUIT WITH VOICE/DATA CABLES.
- THREE (3) #8 CONDUCTORS IN ONE (1) 1" CONDUIT.
- THREE (3) #10 CONDUCTORS IN ONE (1) 3/4" CONDUIT.
- 1" CONDUIT WITH ANNUNCIATOR CABLES PER MANUFACTURER'S RECOMMENDATIONS.
- REFER TO DWG. E5.1 FOR POWER RISER DIAGRAM.
- REFER TO DWG. E3.4 FOR FUEL ISLAND ENLARGED PLAN.
- EMERGENCY SHUT-OFF FOR FUEL ISLAND EQUIPMENT. MOUNT ON UNISTRUT. SEE ELECTRICAL DETAIL.
- REFER TO DWG. E9.2 FOR DETAIL.
- CONTROLLER POWER CONNECTION

Y14-782-RM Addendum No. 3 4/24/14

668 N. Orlando Avenue  
 Suite 107  
 Maitland, FL 32751  
 407-884-1338 fax  
 www.threepoints.com  
 #A4-00208

**THREE POINTS MAINTENANCE FACILITY**  
**ORANGE COUNTY PUBLIC WORKS COMPLEX**  
 4651 YOUNG PINE ROAD  
 ORLANDO, FLORIDA 32829  
 ORANGE COUNTY, FLORIDA

SITE PLAN - ELECTRICAL



NO.	DATE	ISSUE	BY
09-19-2013	95%	ISSUE	DHC
01-17-2014	100%	ISSUE	
02/28/14		CORR.#1& ADD.#1	
04/15/14		ADDENDUM #3	

REVISIONS
Date: 01-17-2014
Drawn: RB
Chck: CT
Apprvd:
Project: 2013-127

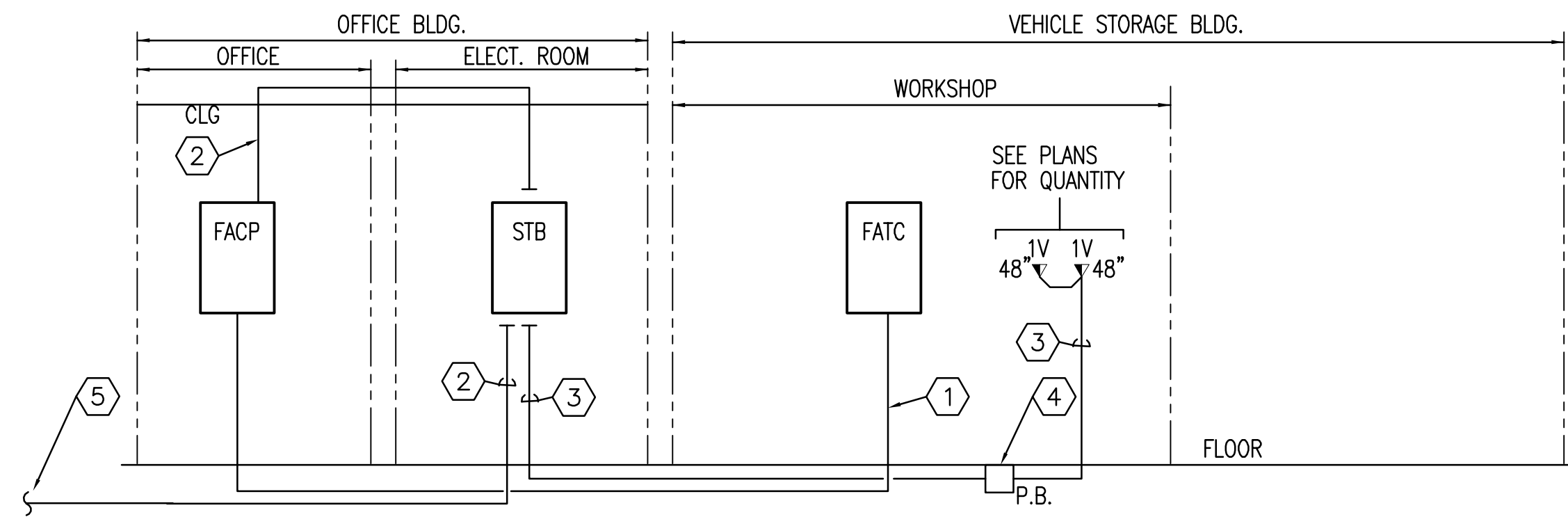
DRAWING DATA
SEAL

E1.0
SHEET NO.
PHASE: PERMITTING
CADD FILE: THREE P

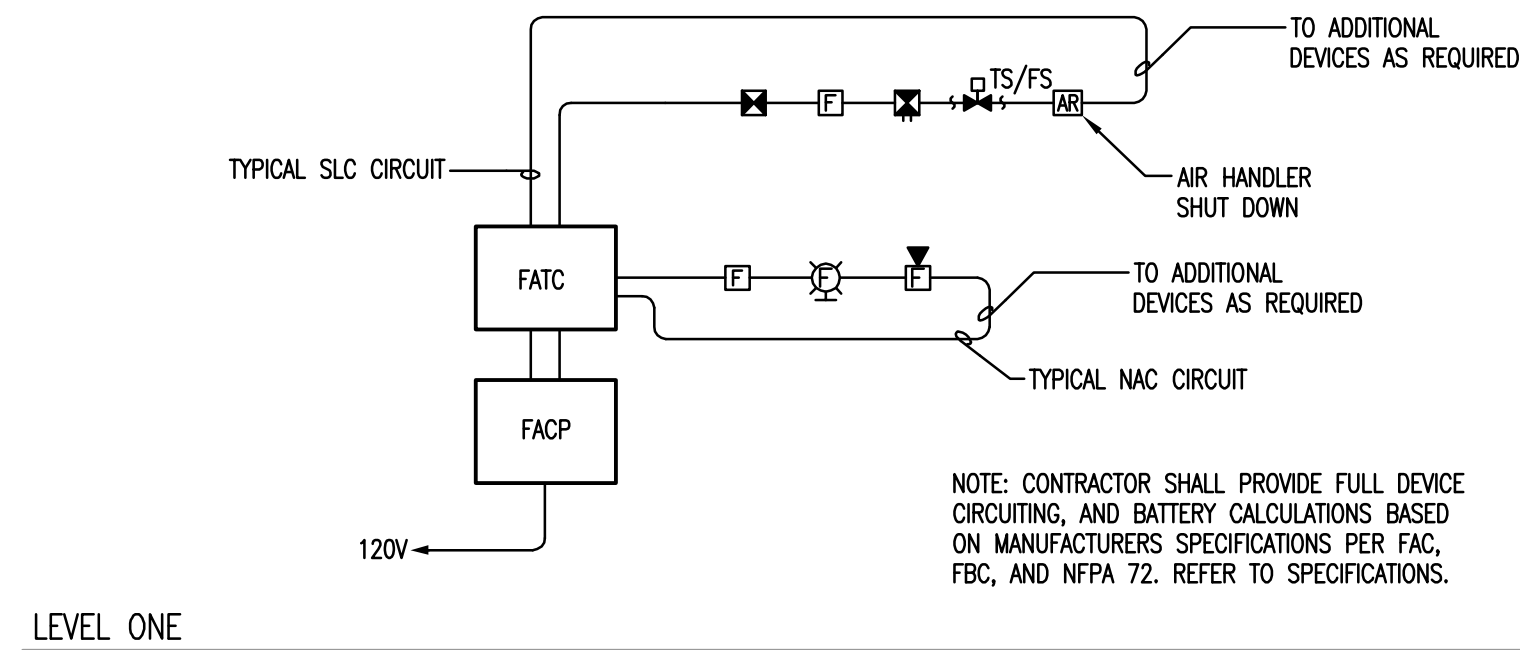
**MATERN PROFESSIONAL ENGINEERING, INC.**  
 ENG. BUS. NO. E9-0009096  
 CERT. OF AUTH. NO. 5096  
 130 Candace Drive  
 Maitland, FL 32751-3331  
 PHONE (407) 740-5020  
 FAX (407) 740-0365

MPE JOB #: 2013-127

THE DRAWINGS AND SPECIFICATIONS AS AN INSTRUMENT OF SERVICES ARE AND SHALL REMAIN THE PROPERTY OF THE ARCHITECT WHETHER THE PROJECT FOR WHICH THEY ARE MADE IS EXECUTED OR NOT. ANY MODIFICATIONS OR REVISIONS TO THE DOCUMENT, OR ANY REPRODUCTION OF THE DOCUMENT, FOR USE AT ANY OTHER LOCATION OR FOR ANY OTHER PURPOSE WITHOUT PRIOR REVIEW, APPROVAL, OR CONSENT OF THE ARCHITECT IS STRICTLY PROHIBITED.



**TELEPHONE & FIRE ALARM RISER**



LEVEL ONE

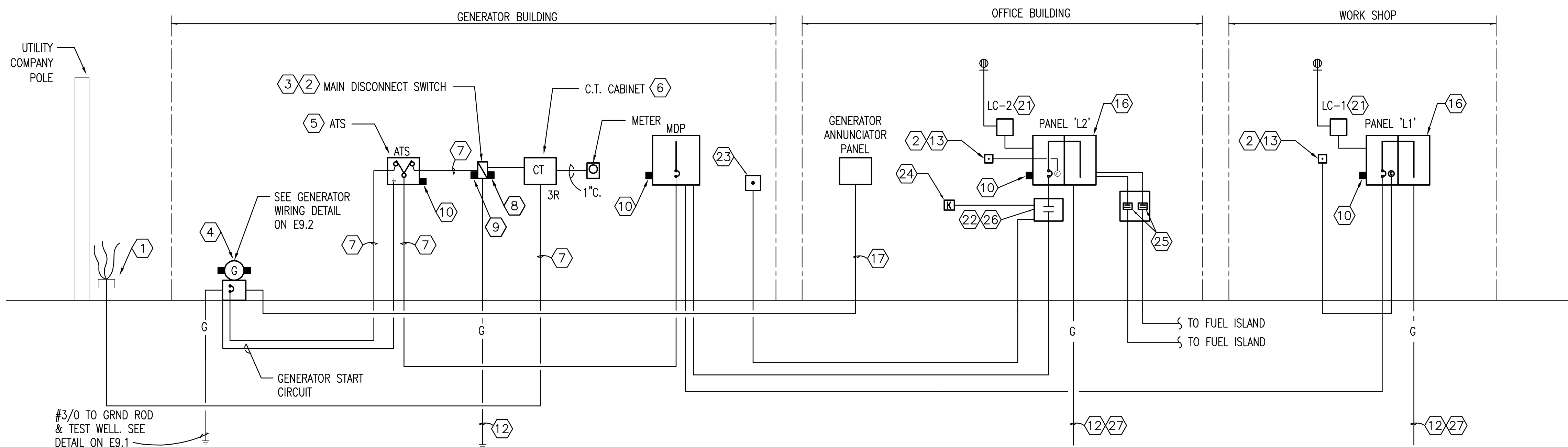
**FIRE ALARM RISER (TYP. CONNECTIONS)**

NOT TO SCALE

FEEDER SCHEDULE:		THREE POINTS MAINT. FAC.			DATE:	4/15/2014	COPYRIGHT: ME, LLC 2009		VERSION: A3d	REV: Jan 11, 2012			
FEEDER FEEDING	OCF AMP SIZE	VOLTS	FEEDER AMPACITY	FEEDER VOLTAGE DROP (%)	WIRE/PHASE	NEUTRAL WIRE	GROUND WIRE	EXTRA NEUTRAL	FEEDER MATERIAL	PARALLEL RUNS	CONDUIT SIZE (IN)	SHORT CIRCUIT AMPS AT PANEL	ERROR CODE
L1	300	208	310	1.75%	#4/0	#4/0	#3		COPPER	2	2.5		
L2	300	208	285	1.59%	#300 KCML	#300 KCML	#4		COPPER	1	3		
MDP	700	208	760	1.90%	#500 KCML	#500 KCML	---		COPPER	3	3.5		

NOTES:

- CONDUIT SIZE IS BASED ON 2008 N.E.C. FOR EMT, IMC, RMC, FLEXIBLE METAL, AND SCHED 40 PVC. IF ANY OTHER TYPE OF CONDUIT/TUBING IS USED, THE CONTRACTOR SHALL RESIZE CONDUIT AND SIZE AS REQUIRED TO COMPLY WITH THE N.E.C..
- USE CABLE REDUCERS AT TERMINATIONS AS REQUIRED TO COORDINATE OVERSIZED PHASE OR NEUTRAL CONDUCTORS WITH TERMINATION LUG SIZE OR PROVIDE TERMINATION LUGS SIZED FOR FEEDERS.
- CONTRACTOR IS TO MEGGER TEST ALL FEEDERS PER SPECIFICATIONS.



**POWER RISER DIAGRAM**

N.T.S.

GENERAL NOTES

- REFER TO GENERAL NOTES ON SHEET 'E0.1'.
- REFER TO SPECIFICATIONS.
- ALL HEX NOTES NOT NECESSARILY USED ON ALL SHEETS.
- ALL EQUIPMENT LOCATED OUTDOORS SHALL BE NEMA 3R.

HEX NOTES-TELEPHONE & FIRE ALARM RISER

- ONE (1) 1-1/4" WITH FIRE ALARM CABLE(S).
- INSTALL ONE (1) 2" WITH PULL STRING.
- ONE (1) 1-1/4" CONDUIT WITH VOICE CABLES.
- PROVIDE PULLBOX EVERY 150FT.
- ONE (2) 2" EMPTY CONDUIT (1 FOR CATV, 1 FOR TEL.) TO UTILITY POLE. COORDINATE EXACT REQUIREMENTS WITH UTILITY COMPANY PRIOR TO BID.

HEX NOTES-POWER RISER DIAGRAM

- STUB SECONDARY CONDUIT UP AT POWER POLE AND PROVIDE SLACK CONDUCTORS PER REQUIREMENT OF UTILITY CO.
- PROVIDE "MAIN DISCONNECT" SIGNAGE PER BUILDING DEPARTMENT REQUIREMENTS.
- 120/208V, 3Ø, 800 AMP MAIN DISCONNECT SWITCH W/ 800 AMP D.E. FUSES, SOLID NEUTRAL IN NEMA 3R ENCLOSURE.
- CATERPILLAR OLYMPIAN GENERATOR SET: 120/208V, 3Ø, 4 WIRE 312 KVA/250 KW STANDBY WITH W.P. ENCLOSURE, BATTERY, BATTERY CHARGER, CRITICAL SILENCING MUFFLER, 800 AMP SHUNT TRIP OPERATED MAIN CIRCUIT BREAKER, 24 HOUR (AT FULL LOAD) BASE TANK W/ RUPTURE ENCLOSURE AND ALARMS, REMOTE ANNUNCIATOR AND ALL ACCESSORIES FOR A FULLY OPERATING SYSTEM (SEE SPECIFICATIONS).
- AUTOMATIC TRANSFER SWITCH- 800 AMP, 4 POLE, 120/208V, 3Ø, S.N., NEMA 3R WITH OPTIONS PER SPECIFICATIONS. SHORT CIRCUIT RATINGS TO MATCH MDP.
- SIZE CABINET PER POWER COMPANY REQUIREMENTS..
- SIZE FEEDER PER "MDP" IN FEEDER SCHEDULE.
- PROVIDE LIGHTNING ARRESTOR ON LINE SIDE OF SERVICE.
- 60 KA SURGE SUPPRESSOR CONNECTED TO LOAD SIDE OF DISC. SWITCH (SEE SPECIFICATIONS).
- 50 KA SURGE SUPPRESSOR.
- ADD 2P BREAKER IN EXISTING PANEL FOR SURGE SUPPRESSOR. SIZE BREAKER PER MANUFACTURER'S RECOMMENDATIONS.
- SEE GROUNDING SYSTEM DETAIL.
- SHUNT TRIP BUTTON.
- TRANSFORMER T-1: SQUARE D 75KVA 208V 1PH PRIMARY 120/240V SECONDARY, NEMA 3R WITH WEATHER SHIELD. TRANSFORMER TO BE PAD MOUNTED.
- NOT USED.
- DO NOT CONNECT GROUND AND NEUTRAL AT PANEL.
- 1-1/4" CONDUIT WITH ANNUNCIATOR CABLES PER MANUFACTURER'S RECOMMENDATIONS.
- NOT USED.
- NOT USED.
- NOT USED.
- EXTERIOR LIGHTING CONTROL. SEE DETAIL ON SHEET E9.2.
- PROVIDE 300A, 4P CONTACTOR IN NEMA 3R ENCLOSURE FOR PANEL 'L1' EMERGENCY SHUT-OFF. CONTACTOR SHALL BE NORMALLY CLOSED, SHALL OPEN WHEN EMERGENCY MUSHROOM BUTTON IS PUSHED. SHALL BE RESET ONLY BY KEY OPERATED SWITCH. CONTACTOR SHALL DISCONNECT ALL CONDUCTORS INCLUDING NEUTRAL.
- EMERGENCY MUSHROOM SWITCH (NEMA 3R). LABEL "FUEL DISPENSER EMERGENCY SHUT-OFF". MOUNT ON SOUTHWEST SIDE OF MAINTENANCE SHED (SEE SITE PLAN).
- KEY OPERATED RESET SWITCH (NEMA 3R). LABEL "RESET SWITCH FOR FUEL DISPENSER EMERGENCY SHUT-OFF".
- ALL CONDUITS FROM THE FUEL ISLAND TO PANEL "L2" AND TO LIGHTING CONTACTOR "LC2" SHALL HAVE EXPLOSION PROOF SEAL-OFFS ABOVE FINISHED GRADE PRIOR TO ENTERING PANEL.
- FUEL PUMP CONTACTOR
- RE-ESTABLISH GROUND PER NEC 250.32 AND MAIN SERVICE GROUND WELL DETAIL.

668 N. Orlando Avenue  
Suite 107  
Maitland, FL 32751  
407.884.1338  
www.threepoints.com  
# AA-030288



THREE POINTS MAINTENANCE FACILITY  
ORANGE COUNTY PUBLIC WORKS COMPLEX  
4651 YOUNG PINE ROAD  
ORLANDO, FLORIDA 32829  
ORANGE COUNTY, FLORIDA



PROJECT TITLE

NO.	DATE	ISSUE	BY	CHK
△	09-19-2013	95% ISSUE		
△	01-17-2014	100% ISSUE		
△	02/28/14	CORR.#1& ADD.#1		
△	04/15/14	ADDENDUM #3		

REVISIONS

Date:	01-17-2014
Drawn:	RB
Chck:	CT
Apprvd:	
Project:	2013-127

DRAWING DATA

SEAL	
E5.1	
SHEET NO.	
PHASE:	PERMITTING
CADD FILE:	THREE P

**mp** MATERN PROFESSIONAL ENGINEERING, INC.  
ENG. BUS. No. EB-009096  
CERT. OF AUTH. No. 5096  
130 Candace Drive  
Maitland, FL 32751-3331  
PHONE (407) 740-5020  
FAX (407) 740-0365  
MPE JOB #: 2013-127



COPYRIGHT ME, LLC 06/01/03 VERSION: B2 REVISED: 10/18/12

VOLTS L&N: 120  
VOLTS PH: 208  
PHASE: 3  
MOUNTING: SURFACE  
TYPE: NCO  
MFR: SQ D

PANEL: L2  
MLO(\*\*\*): 300  
MCB: SHTRIP  
GFP: YES

EXISTING: NO  
NEMA 3R: 3

NOTES AND REFERENCE NOTES:  
MFR = SIZE CB PER MFR. RECOMMENDATIONS.  
\$ = NEW CB IN EXIST SPACE  
& = REPLACE EXIST CB WITH NEW  
SH = SHUNT TRIP C.B.  
AF = ARC FAULT C.B.

GENERAL NOTES:  
(1) ALL C.B.'S FEEDING HVAC EQUIPMENT TO BE HACR TYPE.  
(2) ALL C.B.'S FEEDING ELEV EQUIP TO BE SHUNT-TRIP TYPE.  
(3) ALL C.B.'S FEEDING ELEV EQUIP TO BE SIZED AS REQ'D BY MFR.  
(4) ALL C.B.'S FEEDING HID LTO TO BE HID RATED.  
(5) NO MULTIWIRE BRANCH CKTS ARE ALLOWED.  
(6) NOT USED.

TOTAL AMPS A PH: 227  
TOTAL AMPS B PH: 200  
TOTAL AMPS C PH: 143  
ERROR CODE:

COPYRIGHT ME, LLC 06/01/03 VERSION: B2 REVISED: 10/18/12

VOLTS L&N: 120  
VOLTS PH: 208  
PHASE: 3  
MOUNTING: SURFACE  
TYPE: NCO  
MFR: SQ D

PANEL: L2  
MLO(\*\*\*): 300  
MCB: SHTRIP  
GFP: YES

EXISTING: NO  
NEMA 3R: 3

NOTES AND REFERENCE NOTES:  
MFR = SIZE CB PER MFR. RECOMMENDATIONS.  
\$ = NEW CB IN EXIST SPACE  
& = REPLACE EXIST CB WITH NEW  
SH = SHUNT TRIP C.B.  
AF = ARC FAULT C.B.

GENERAL NOTES:  
(1) ALL C.B.'S FEEDING HVAC EQUIPMENT TO BE HACR TYPE.  
(2) ALL C.B.'S FEEDING ELEV EQUIP TO BE SHUNT-TRIP TYPE.  
(3) ALL C.B.'S FEEDING ELEV EQUIP TO BE SIZED AS REQ'D BY MFR.  
(4) ALL C.B.'S FEEDING HID LTO TO BE HID RATED.  
(5) NO MULTIWIRE BRANCH CKTS ARE ALLOWED.  
(6) NOT USED.

TOTAL AMPS A PH: 244  
TOTAL AMPS B PH: 217  
TOTAL AMPS C PH: 160  
ERROR CODE:

COPYRIGHT ME, LLC 06/01/03 VERSION: B2 REVISED: 10/18/12

VOLTS L&N: 120  
VOLTS PH: 208  
PHASE: 3  
MOUNTING: SURFACE  
TYPE: NCO  
MFR: SQ D

DIST PANEL MDP  
MLO(\*\*\*): 700  
MCB: SHTRIP  
GFP: YES

EXISTING: NO  
NEMA 3R: 3

NOTES AND REFERENCE NOTES:  
MFR = SIZE CB PER MFR. RECOMMENDATIONS.  
\$ = NEW CB IN EXIST SPACE  
& = REPLACE EXIST CB WITH NEW  
SH = SHUNT TRIP C.B.  
AF = ARC FAULT C.B.

GENERAL NOTES:  
(1) ALL C.B.'S FEEDING HVAC EQUIPMENT TO BE HACR TYPE.  
(2) ALL C.B.'S FEEDING ELEV EQUIP TO BE SHUNT-TRIP TYPE.  
(3) ALL C.B.'S FEEDING ELEV EQUIP TO BE SIZED AS REQ'D BY MFR.  
(4) ALL C.B.'S FEEDING HID LTO TO BE HID RATED.  
(5) NO MULTIWIRE BRANCH CKTS ARE ALLOWED.  
(6) NOT USED.  
(7) IF HCP-SU PANEL THEN ALL BREAKERS TO BE ON ONE SIDE.

TOTAL AMPS A PH: 537  
TOTAL AMPS B PH: 558  
TOTAL AMPS C PH: 547  
ERROR CODE:

SECTION 1 WITH MAINS WIDTH: 20 DEPTH: 6.00

DESCRIPTION	CONN	TYPE	AMPS	AMPS	AMPS	C.B. AMPS	C.B. POLE	REF	NOTE	CKT. NO.	CKT. NO.	REF	C.B. POLE	C.B. AMPS	AMPS	AMPS	DESCRIPTION	CONN	TYPE	
EWH-1	58	5.0	58	58	58	80	2	1	2	1	2		2	50	25	25	HP-1A	25	12.1	
GATE 1	58	5.0	58	58	58	80	2	1	2	3	4		2	50	25	25	HP-1A	25	12.1	
SPARE	0.2					20	1	7	8				2	45	26	26	HP-1B	26	12.1	
RECEPTS	4	4.0	6	6	6	20	1	9	10	1	20		2	20	2	2	LC2	2	5.0	
RECEPTS	4	4.0	6	6	6	20	1	11	12	1	20		2	20	2	2	STB	2	5.0	
LIGHTS	1065	2.0	9	9	9	20	1	13	14	1	20		4	20	4	4	FACP	4	5.0	
LIGHTS	920	2.0	8	8	8	20	1	15	16	1	20		4	20	4	4	FACP	4	5.0	
LIGHTS	920	2.0	8	8	8	20	1	17	18	1	20		12	20	12	12	EXT. LIGHTS	1450	2.0	
RECEPTS	4	4.0	6	6	6	20	1	19	20	1	20		12	20	12	12	COFFEE	12	5.0	
RECEPTS	4	4.0	6	6	6	20	1	21	22	1	20		10	20	10	10	MICROWAVE	10	5.0	
RECEPTS	4	4.0	6	6	6	20	1	23	24	1	20		8	20	8	8	FRIDGE	8	5.0	
RECEPTS	5	4.0	7	7	7	20	1	25	26	1	20		8	20	8	8	VENDING	8	5.0	
EF-1	4	9.0	4	4	4	15	1	27	28	1	20		5	20	5	5	EW	5	5.0	
RECEPTS	1	4.0	1	1	1	20	1	29	30	1	20		1	20	1	1	RECEPTS	1	4.0	
RECEPTS	1	4.0	1	1	1	20	1	31	32	3	50		46	46	46	46	AHJ-1	46	13.1	
GATE 2	9	5.0	9	9	9	20	1	33	34										46	13.1
BCS	5	5.0	5	5	5	20	1	35	36										46	13.1
SPARE	0.2					20	1	37	38										3	30
SPARE	0.2					20	1	39	40											5.0
SPARE	0.2					20	1	41	42											5.0
SUBFEED LUGS/BREAKER																				

SECTION 1 WITH MAINS WIDTH: 20 DEPTH: 6.00

DESCRIPTION	CONN	TYPE	AMPS	AMPS	AMPS	C.B. AMPS	C.B. POLE	REF	NOTE	CKT. NO.	CKT. NO.	REF	C.B. POLE	C.B. AMPS	AMPS	AMPS	DESCRIPTION	CONN	TYPE	
EWH-1	58	5.0	58	58	58	80	2	1	2	1	2		2	50	25	25	HP-1A	25	12.1	
GATE 1	58	5.0	58	58	58	80	2	1	2	3	4		2	50	25	25	HP-1A	25	12.1	
SPARE	0.2					20	1	7	8				2	45	26	26	HP-1B	26	12.1	
RECEPTS	4	4.0	6	6	6	20	1	9	10	1	20		2	20	2	2	LC2	2	5.0	
RECEPTS	4	4.0	6	6	6	20	1	11	12	1	20		2	20	2	2	STB	2	5.0	
LIGHTS	1065	2.0	9	9	9	20	1	13	14	1	20		4	20	4	4	FACP	4	5.0	
LIGHTS	920	2.0	8	8	8	20	1	15	16	1	20		4	20	4	4	FACP	4	5.0	
LIGHTS	920	2.0	8	8	8	20	1	17	18	1	20		12	20	12	12	EXT. LIGHTS	1450	2.0	
RECEPTS	4	4.0	6	6	6	20	1	19	20	1	20		12	20	12	12	COFFEE	12	5.0	
RECEPTS	4	4.0	6	6	6	20	1	21	22	1	20		10	20	10	10	MICROWAVE	10	5.0	
RECEPTS	4	4.0	6	6	6	20	1	23	24	1	20		8	20	8	8	FRIDGE	8	5.0	
RECEPTS	5	4.0	7	7	7	20	1	25	26	1	20		8	20	8	8	VENDING	8	5.0	
EF-1	4	9.0	4	4	4	15	1	27	28	1	20		5	20	5	5	EW	5	5.0	
RECEPTS	1	4.0	1	1	1	20	1	29	30	1	20		1	20	1	1	RECEPTS	1	4.0	
RECEPTS	1	4.0	1	1	1	20	1	31	32	3	50		46	46	46	46	AHJ-1	46	13.1	
GATE 2	9	5.0	9	9	9	20	1	33	34										46	13.1
BCS	5	5.0	5	5	5	20	1	35	36										46	13.1
SPARE	0.2					20	1	37	38										3	30
SPARE	0.2					20	1	39	40											5.0
SPARE	0.2					20	1	41	42											5.0
SUBFEED LUGS/BREAKER																				

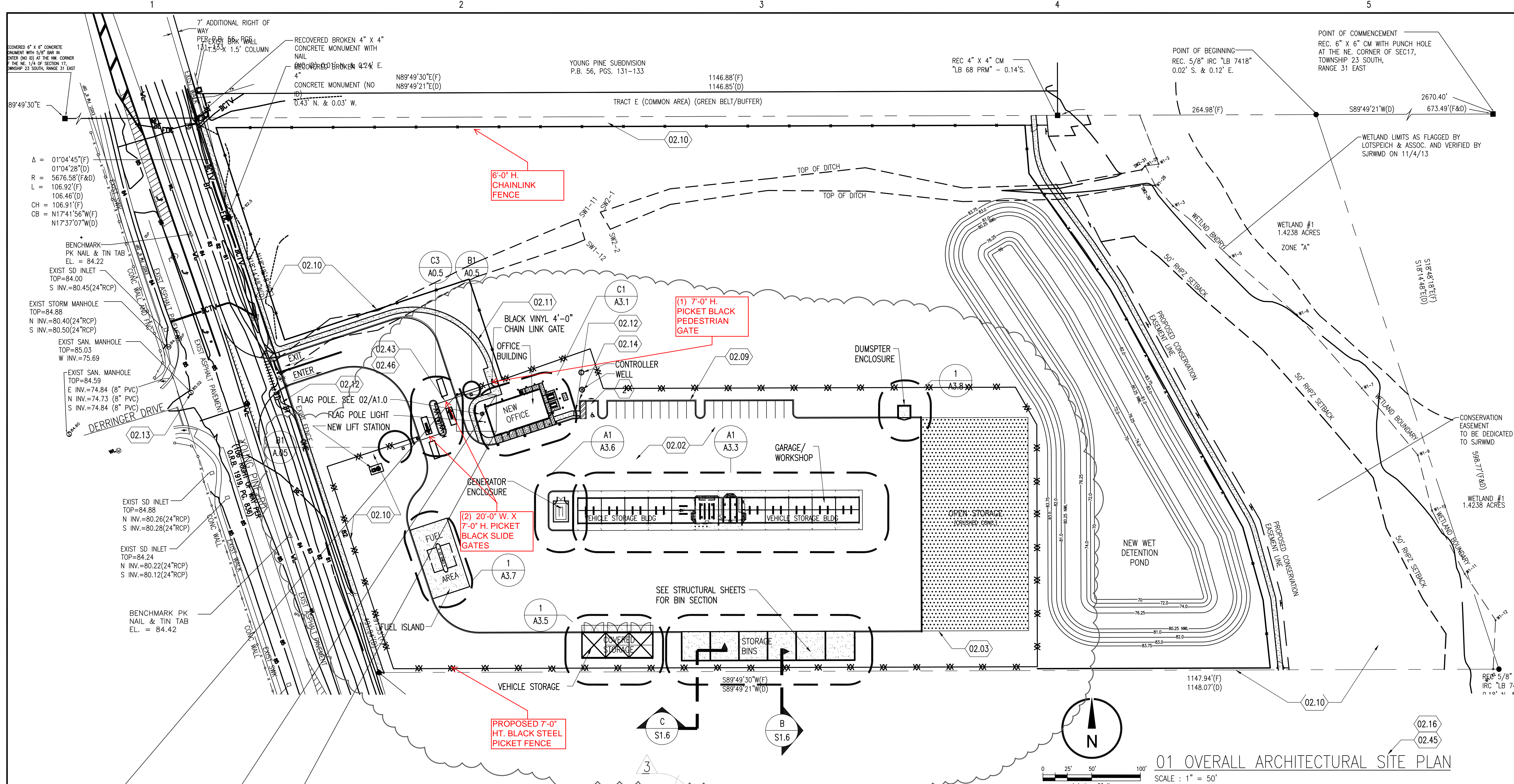
SECTION 1 WITH MAINS WIDTH: 42 DEPTH: 9.50

DESCRIPTION	CONN	TYPE	AMPS	AMPS	AMPS	C.B. AMPS	C.B. POLE	REF	NOTE	CKT. NO.	CKT. NO.	REF	C.B. POLE	C.B. AMPS	AMPS	AMPS	DESCRIPTION	CONN	TYPE		
PANEL L1	247	14.0	232	232	232	300	3	1	2	1	2		1	20	6	6	SPACE				
RECEPTS	247	14.0	232	232	232	300	3	3	4	3	4		1	20	6	6	RECEPT/STRT	4	4.0		
RECEPTS	207	14.0	206	206	206	300	3	7	8	1	20		5	20	5	5	GEN CONTR	5	5.0		
RECEPTS	207	14.0	206	206	206	300	3	9	10	1	20		18	20	18	18	SUMP HTR	15	5.0		
RECEPTS	101	5.0	101	101	101	175	3	13	14	3	13		14	14	14	14	BATT CHGR	5	5.0		
RECEPTS	101	5.0	101	101	101	175	3	15	16												
RECEPTS								17	18												
RECEPTS								19	20												
RECEPTS								21	22												
RECEPTS								23	24												
RECEPTS								25	26												
RECEPTS								27	28												
RECEPTS								29	30												
RECEPTS								31	32												
RECEPTS								33	34												
RECEPTS								35	36												
RECEPTS								37	38												
RECEPTS								39	40												
RECEPTS								41	42												
SUBFEED LUGS/BREAKER																					

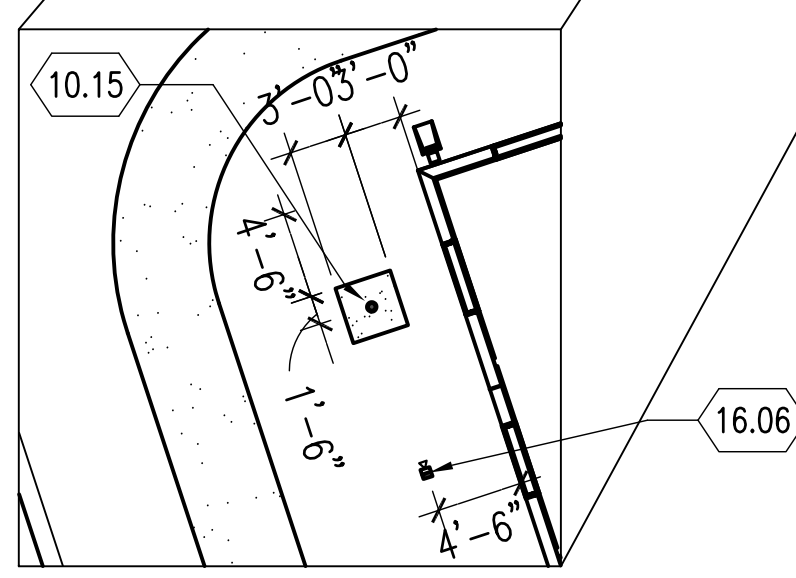
SECTION 2 (L2) WIDTH: 20.0 DEPTH: 6.00

DESCRIPTION	CONN	TYPE	AMPS	AMPS	AMPS	C.B. AMPS	C.B. POLE	REF	NOTE	CKT. NO.	CKT. NO.	REF	C.B. POLE	C.B. AMPS	AMPS	AMPS	DESCRIPTION	CONN	TYPE	
FUEL PUMP	14	5.0	14	14	14	30	1	43	44	1	20		5	20	5	5	FUEL DISPENSERS	5	5.0	
FUEL PUMP	14	5.0	14	14	14	30	1	45	46	1	20		3	20	3	3	FUEL ISLAND LIGHTS	5	5.0	
CARD READER	5	5.0	5	5	5	20	1	47	48	1	20		7	20	7	7	GEN. RCPTS	5	3.0	
VEEDER ROOT	5	5.0	5	5	5	20	1	49	50	1	20						SPACE			
SPARE	0.2					20	1	51	52											0.2
SPARE	0.2					20	1	53	54											0.2
SPARE	0.2					20														





# Alternate #1



### LEGEND:

	EXIST.	NEW
ASPHALT PAVEMENT	=====	=====
CONCRETE WALK	=====	=====
CONCRETE CURB	=====	=====
RIBBON CURB	=====	=====
CHAIN LINK FENCE	-X-X-X-	-X-X-
TREE		
POWER POLE	PP	PP

**7'-0" MONTAGE II CLASSIC STEEL PICKET BLACK FENCE OR EQUAL.** -XX-XX-

### SHEET NOTES LIST

- 02.02 ASPHALT PAVING OVER BASE & COMPACT FILL (SEE CIVIL DOCUMENTS)
- 02.03 CRUSHED CONCRETE
- 02.06 PAINT BACK FLOW PREVENTOR COLOR TO BE SELECTED BY ARCHITECT
- 02.09 CONCRETE CURB. SEE CIVIL
- 02.10 6' HIGH VINYL COATED CHAIN LINK FENCE. SEE CIVIL DRAWINGS
- 02.11 CONCRETE SIDEWALK. SEE CIVIL DRAWINGS
- 02.12 NEW HANDICAP RAMP. SEE CIVIL DRAWINGS.
- 02.13 EXISTING MANHOLE TO REMAIN. SEE CIVIL DRAWINGS
- 02.14 NEW CLEAN-OUT. SEE CIVIL DRAWINGS.
- 02.15 FUEL TANK- SEE CIVIL & MPE.
- 02.16 ALL BUILDINGS ARE PROTOTYPES: FIELD ADJUST UTILITIES, WATER AND SEWER SERVICES CONNECTIONS TO THE BUILDINGS PER CIVIL DRAWINGS.
- 02.43 TYPICAL, PROVIDE 6' HIGH TEMPORARY CHAIN LINK FENCE WITH 16' WIDE GATE DURING CONSTRUCTION PHASING. COORDINATE WITH ORANGE COUNTY DEPARTMENT OF CAPITAL PROJECTS FOR EXACT LOCATIONS.
- 02.46 SLIDE GATE OPERATOR: ELITE SL-3000-UL SLIDE GATE OPERATOR (OR APPROVED EQUAL), 1/2hp, 120VAC, 4AMP WITH VEHICLE LOOP DETECTORS AND SIREN OPERATED SENSOR SOS-YDT, OR APPROVED EQUAL(YELP/DECIBLE/TIME). SLIDE GATE OPERATOR LOGIC1: ACTIVATE ENTRY BY KEYPAD, CLOSED BY DETECTOR LOOP. SLIDE GATE OPERATOR LOGIC2: ACTIVATE ENTRY BY KEYPAD, GATE STAYS OPEN UNTIL CLOSED AT END DAY BY KEYPAD.
- 02.47 KEYPAD: ELITE ALL WEATHER EKP-485 (OR APPROVED EQUAL) POST MOUNTED.

668 N. Orlando Avenue  
Suite 107  
Maitland, FL 32751  
407.777.7554  
www.mlm-martin.com  
#AA102028

---

**THREE POINTS MAINTENANCE FACILITY**  
ORANGE COUNTY ROADS AND DRAINAGE DIVISION  
4651 YOUNG PINE ROAD  
ORLANDO, FLORIDA 32829  
ORANGE COUNTY, FLORIDA

OVERALL ARCHITECTURAL SITE PLAN

---

**PROJECT TITLE**  
NO. DATE ISSUE BY CHK  
09-19-2013 95% ISSUE  
01-17-2014 100% ISSUE  
04/04/14 ADDENDUM #2  
04/15/14 ADDENDUM #3

**REVISIONS**  
Date: 01-17-2014  
Drawn: MCH- AP-Z  
Chck: MLM  
Apprvd: MLM  
Project: 97133-10

**DRAWING DATA**  
MIGUEL LAZARO MARTIN  
AR 8255

SEAL

**A1.0**

SHEET NO.  
PHASE: PERMITTING  
CADD FILE: THREE P



# MONTAGE II<sup>®</sup>

## INDUSTRIAL ORNAMENTAL STEEL FENCE



### *The Ornamental Iron Standard*

As the world's leader in ornamental fencing Ameristar Fence Products continues to deliver value added products that outperform industry standards. Montage II is the preferred choice among owners, architects, and contractors for industrial ornamental fence.

### *Strength*

Montage II is manufactured using a proven fusion welding technology. The welded design of Montage II bonds the industrial pickets at each rail intersection delivering unmatched strength.

### *Appeal*

Montage II is available in multiple styles and heights to match any project requirement. The 1" steel picket design of Montage II delivers a versatile appeal by combining security with aesthetics.

### *Design*

The Montage II ATF (all terrain fence) design can traverse over a 50% grade change. Ameristar's E-Coat coating process protects Montage II from weathering, guaranteeing long lasting beauty and structural integrity providing a 20 year warranty.



We take great pride in manufacturing "Made in the USA" products. Ameristar is located in Tulsa, Oklahoma and is American owned and operated.

### *Applications:*

- › State Facilities
- › Municipal Facilities
- › Airports
- › Water Treatment & Storage
- › Public Housing Authorities
- › Parks & Recreation
- › Stadiums & Event Centers
- › Schools & Universities
- › Hospitals

Y14-782-RM

Add. No. 3

Covered by or for use with one or more of the following U.S. patents: 6.811.145, 7.071.439, 7.159.853, 7.282.659, 7.396.002, 7.621.510

[www.ameristarfence.com](http://www.ameristarfence.com) | 888-333-3422  
[mktg@ameristarfence.com](mailto:mktg@ameristarfence.com)





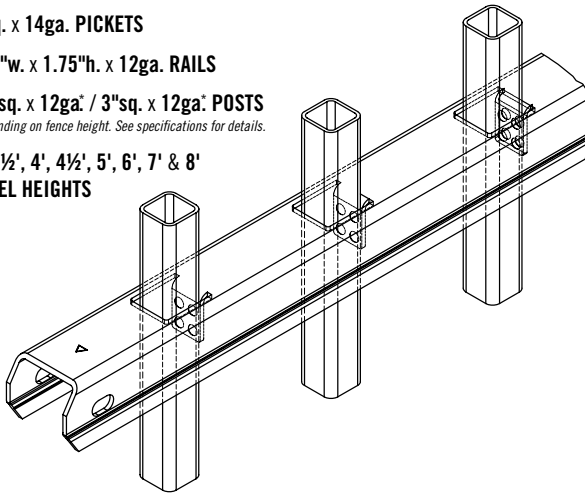
# MONTAGE II®

## INDUSTRIAL ORNAMENTAL STEEL FENCE

### Panels

Montage II panels are welded using pro-fusion technology, a process proven in the automotive and aerospace industries.

- 1"sq. x 14ga. PICKETS
- 1.75"w. x 1.75"h. x 12ga. RAILS
- 2.5"sq. x 12ga. / 3"sq. x 12ga. POSTS  
\*Depending on fence height. See specifications for details.
- 3', 3½', 4', 4½', 5', 6', 7' & 8'  
PANEL HEIGHTS



### Posts

Posts are manufactured of high tensile steel and are galvanized inside and out for superior corrosion protection.

### Brackets

Montage II brackets are designed of high strength stainless steel and accompanied with tamper-proof fasteners. Ameristar's bracketed design allows the contractor to have a flawless installation and helps maintain the integrity of the coating by not welding the panels to the posts.

### Gates

Ameristar understands the importance of balancing perimeter security with the highest quality entry control gates. Montage II has a wide variety of Swing, Slide, and Cantilever Gates to match any entry.



Montage II is produced using up to 96% post-industrial recycled steel.

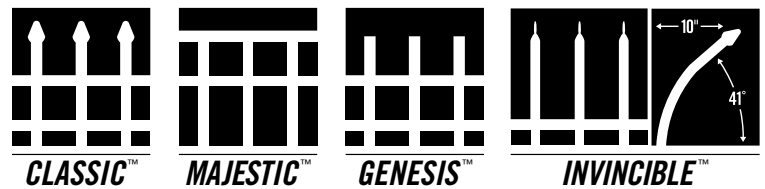
### Warranty

Montage II is produced in a state-of-the-art manufacturing facility using the highest quality materials and processes. Ameristar has over 25 years of experience and research in coating and processing of ornamental fence products allowing Montage II to support a 20 year warranty.

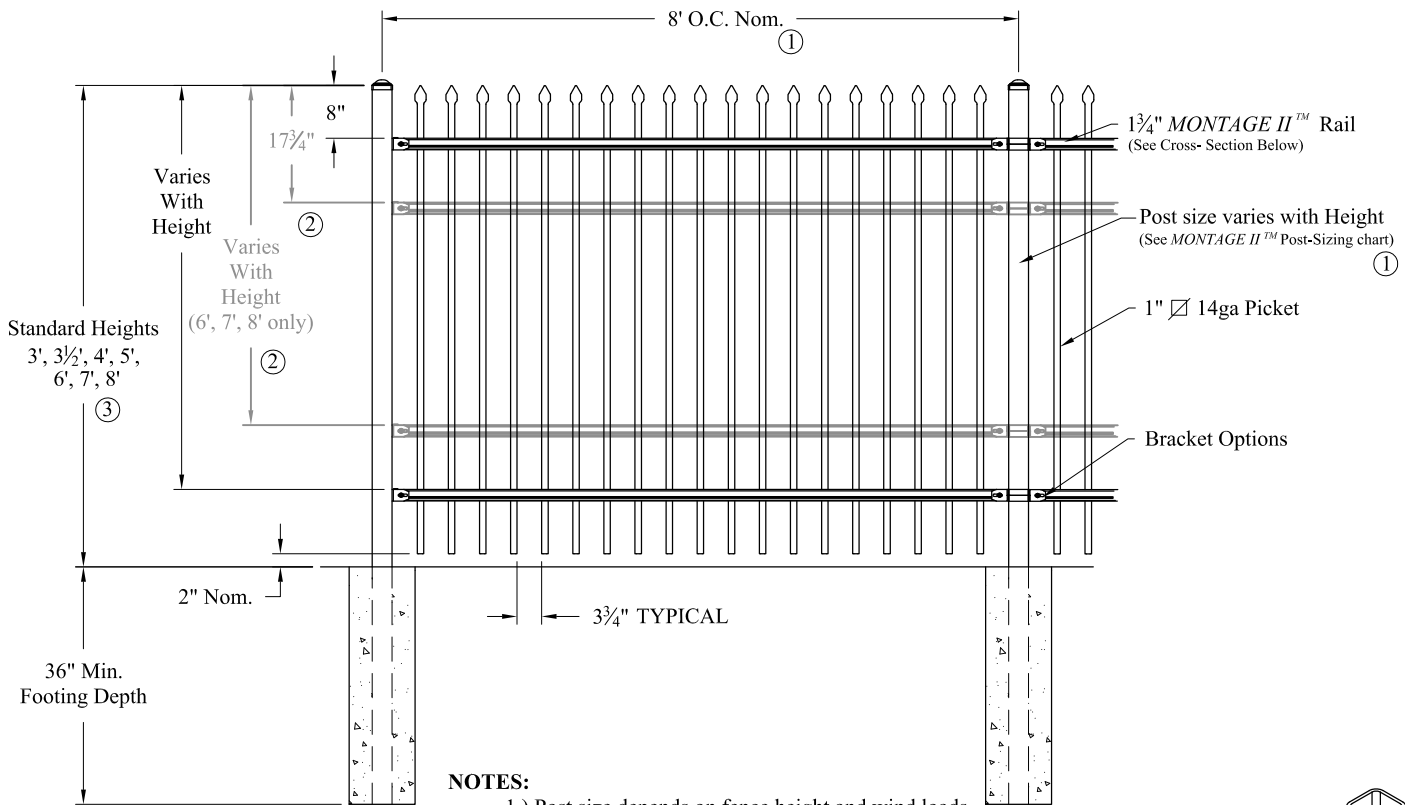
### Coating

Ameristar has always challenged the industry by developing and producing products with superior coatings. Montage II was developed using E-Coat technology which deposits coatings throughout the entire product, thus eliminating any risk of corrosion where typical powders will not adhere.

### Styles



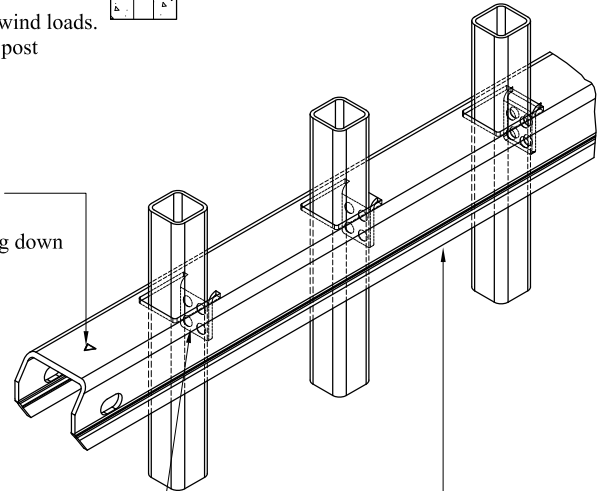
PART# 9790 / REV 05/2013



**NOTES:**

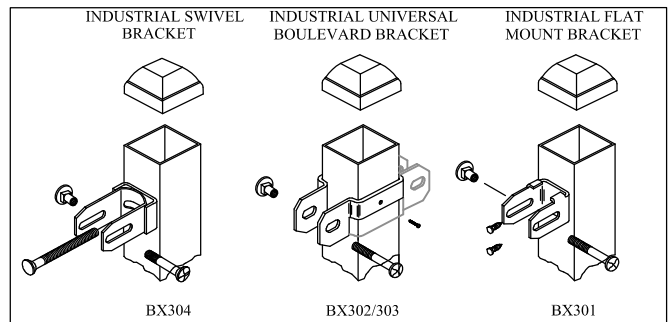
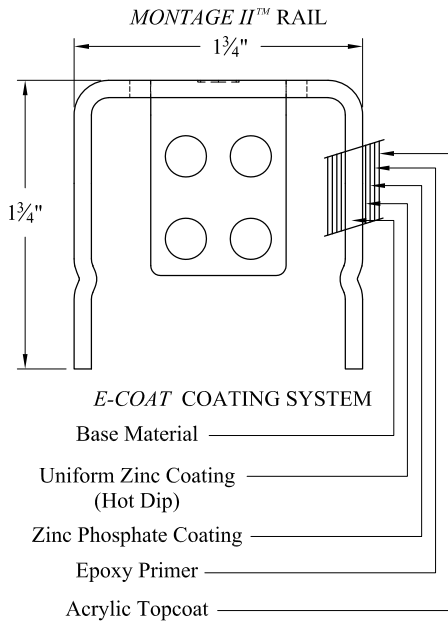
- 1.) Post size depends on fence height and wind loads. See *MONTAGE II™* specifications for post sizing chart and setting dimensions.
- 2.) Third & Fourth rail optional.
- 3.) Available in Flush Bottom.

**RAKING DIRECTIONAL ARROW**  
Welded panel can be raked 30° over 8' with arrow pointing down grade.



**PROFUSION™ WELDING PROCESS**  
No exposed welds, Good Neighbor profile - Same appearance on both sides

**MONTAGE II™ RAIL**  
Specially formed high strength architectural shape.



**HEAVY INDUSTRIAL STRENGTH WELDED STEEL PANEL**  
**PRE-ASSEMBLED Y14-782-RM Add. No. 3**

Values shown are nominal and not to be used for installation purposes. See product specification for installation requirements.

2HCISO

Title: **MONTAGE II CLASSIC 2/3/4-RAIL**

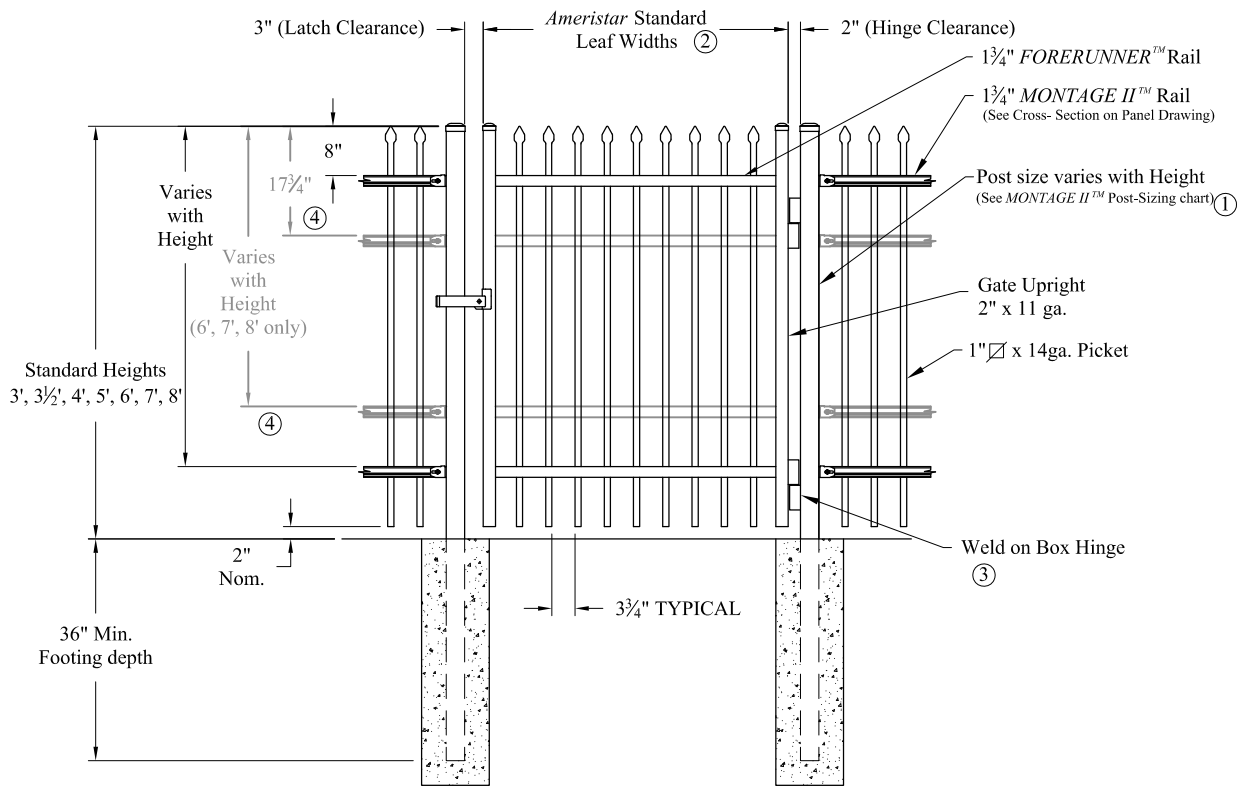
DR: RTM SH . 1 of 1 SCALE: DO NOT SCALE

CK: ME Date 6/28/10 REV: b



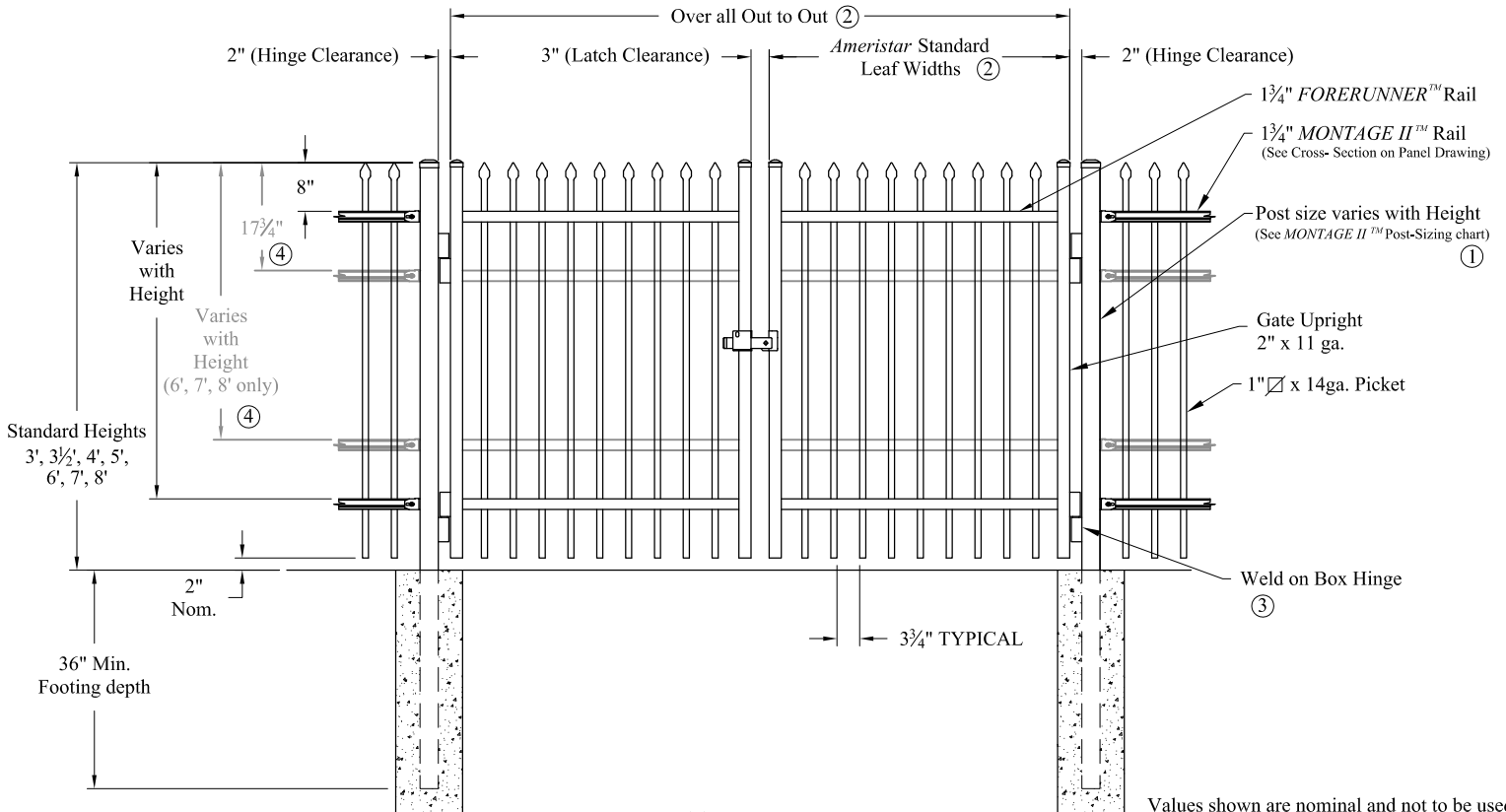
**AMERISTAR®**

1555 N. Mingo  
Tulsa, OK 74116  
1-888-333-3422  
www.ameristarfence.com



**NOTES:** *Single gate Arrangement*

- 1.) Post size depends on fence height, weight and wind loads. See *MONTAGE II™* specifications for post sizing chart.
- 2.) See *Ameristar* gate table for standard out to outs. Custom gate openings available for special out to out/leaf widths.
- 3.) Additional styles of gate hardware are available on request. This could change the Latch & Hinge Clearance.
- 4.) Third & Forth rail optional.



*Double gate Arrangement*

Values shown are nominal and not to be used for installation purposes. See product specification for installation requirements.  
2HCISOG

**INDUSTRIAL STRENGTH STEEL** Y14-782-RM Add. No. 3

Title: **MONTAGE II CLASSIC 2/3/4-RAIL SGL & DBL GATE**

DR: RTM	SH . 1 of 1	SCALE: DO NOT SCALE
CK: ME	Date 6/28/10	REV: b



**AMERISTAR®**

1555 N. Mingo  
Tulsa, OK 74116  
1-888-333-3422  
www.ameristarfence.com