

July 9, 2015

**BOARD OF COUNTY COMMISSIONERS
ORANGE COUNTY, FLORIDA**

**ADDENDUM NO. 2 / IFB NO. Y15-786-J2
ORANGE COUNTY LANDFILL WESTERN BORROW AREA ELECTRICAL SYSTEM**

BID OPENING DATE: July 16, 2015

This addendum is hereby incorporated into the bid documents of the project referenced above. The following items are clarifications, corrections, additions, deletions and/or revisions to and shall take precedence over the original documents. Additions are indicated by underlining, deletions are indicated by ~~strikethrough~~.

THE BID OPENING DATE REMAINS THE SAME.

BID OPENING DATE: July 16, 2015

1. The following are responses to bidder Questions.

QUESTION 1. Who is the Power Company? Can we get a contact name and number?

Response: Orlando Utilities Commission - Chris Taylor, MBA, Senior Engineer, ctaylor@ouc.com, office 407-434-4151, fax 407-434-4329

QUESTION 2. A) Who is the authority having jurisdiction? And, B) If Orange County, who modifies the drawings to their requirements, stamp and seal, the Contractor or the Engineer?

Response A. Orange County Building Department

Response B. Contractor is responsible for submitting the application and obtaining the Building Permit. Engineer will provide signed and sealed drawing and revise drawing based on comments from the building Department, if necessary.

QUESTION 3. Whose meter base do we price?

Response: As approved by the Power Company.

QUESTION 4. Will the meter base be required to be stainless steel 4X?

Response: Meter base shall be NEMA 3R aluminum. See revised Drawings.

QUESTION 5. Is there any duct bank required in this project?

Response: Underground conduits shall be installed per Detail 2501 unless they are under a roadway. Conduits under roadways are required to be concrete encased per Detail 2505. Please refer to General Electrical Requirement Number 8 on Sheet 1 of 5.

QUESTION 6. Please verify that the power company services will be overhead and if so, the required height of the riser to suit the conditions.

Response: The power service transformers have already been installed at the site. Power from the transformers is to be routed down the power pole in a conduit and then distributed in underground conduits per the plans.

QUESTION 7. Please verify the underground conduits reflected on Sheet 3 will be installed as per Detail 2501 on Sheet 5 and define the type of material required for "Compacted Bedding and Pipe Zone Material"

Response: See response to Question 5. Material removed from the trench can be used for both Compacted Earth Backfill. See revised drawing.

QUESTION 8. Is the meter base required to be stainless steel?

Response: See response to Question 4.

QUESTION 9. Are the Myers hubs required to be stainless steel?

Response: Yes.

QUESTION 10. The new Pump Package viewed at the Pre-Bid Conference contained a pump controller in a NEMA 3R enclosure for each pump. Are these controllers to be used in lieu of or in addition to the Combination Motor Starters indicated on Sheet 4, or not at all? If they are in addition to the Combination Motor Starters, are they to be installed adjacent or integral to the pump or do they get mounted on the rack with the with the Combination Motor Starter?

Response: Pump controllers provided by Owner will be used. See revised drawings.

QUESTION 11. Are there any air quality concerns in this area of the facility as per section 01030 (Special Provisions) 1.01 B1 and section 01800 (Health and Safety) 1.02, 1.03 A5 and 1.05 D and E which would require air monitoring?

Response: There are no known health and safety related air quality concerns in the construction area. See specification revisions.

QUESTION 12. On sheet E-001, hex note 3, it shows concrete encased duct bank under roadway. Is all underground conduit to be concrete encased or only the conduits under the roadways?

Response: See Response to Question 5.

QUESTION 13. On sheet E-001, there are (10) pumps shown to be installed. Are we doing all of the electrical work shown on this page? Please clarify the areas and limits of our scope of work.

Response: Scope is for Panels 001C and 001D. See revised drawings.

QUESTION 14. Who provides the size 1 starters (hex note 4) on sheet E-002?

Response: See response to Question 10.

QUESTION 15. Is the service drop from the power company transformer/pole to the disconnect to be overhead or underground?

Response: See Response to Question 6.

QUESTION 16. Please provide the contact info for the power company contact for this project.

Response: See Response to Question 1.

QUESTION 17. What permit fees are applicable for this job?

Response: Per Orange County Building Department, \$257.50 per application/connection, 3-phase, 480v, 1-100 amps (for 30-amp connections per drawings). \$515 total in permitting. Each connection requires an application, as per the Building Department Representative, (407-836-5550).

2. The following represents a change to the IFB.

Technical Specifications:

Section 01030, Special Provisions

A. Page 1, Paragraph 1.01.B.1, **DELETE** in its entirety.

Section 01800, Health and Safety

A. Page 1, **DELETE** Paragraph 1.02 in its entirety.

B. Page 2, **DELETE** the last sentence in Paragraph 1.03.A in its entirety.

C. Page 2, **DELETE** Paragraphs 1.03.A.1 through 7 in their entirety.

D. Page 4, Paragraph 1.05.D, **DELETE** in its entirety.

E. Page 4, Paragraph 1.05.E, **DELETE** the second sentence in its entirety.

Drawings:

- A. **DELETE** Drawing 2 of 5 in its entirety.
- B. **DELETE** Drawings 3 of 5, 4 of 5, and 5 of 5, and **REPLACE** with the attached Revised Drawings 3 of 5, 4 of 5, and 5 of 5, each as marked "Addendum #2 Revision".

3. **All other terms, conditions and specifications remain the same.**

4. a. **The Bidder shall acknowledge receipt of this addendum by completing the applicable section in the solicitation or by completion of the acknowledgement information on the addendum. Either form of acknowledgement must be completed and returned not later than the date and time for receipt of the bid.**

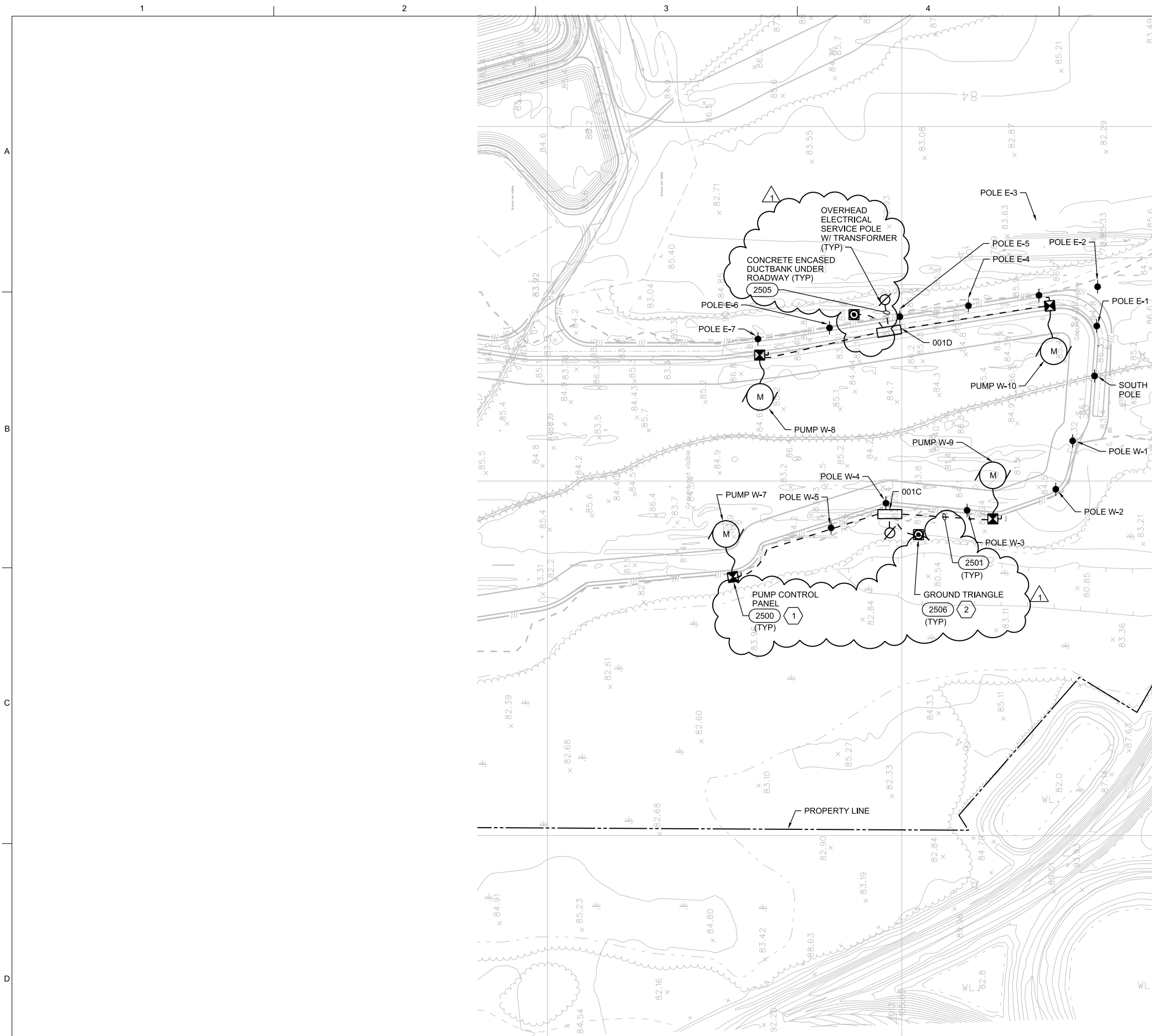
b. **Receipt acknowledged by:**

Authorized Signature

Date Signed

Title

Name of Firm

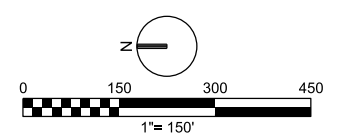


GENERAL NOTES:

- A. FOR ELECTRICAL LEGEND AND GENERAL ELECTRICAL REQUIREMENTS REFER TO DRAWING G-004.

KEYED NOTES:

1. COORDINATE WITH THE OWNER TO FIELD LOCATE THE PANEL BOARDS AND STARTERS, ADJACENT TO THE ROADWAY, 10 FEET FROM THE EDGE.
2. FIELD LOCATE GROUNDING TRIANGLES NEXT TO THE PANEL BOARDS AND OUT OF THE ROADWAYS.
3. COORDINATE FIELD LOCATION OF THE DUCT BANK AND HAND HOLES WITH THE OWNER, ADJACENT TO THE ROADWAY AT THE TOP OF THE EMBANKMENT.



NEEL-SCHAFFER
SOLUTIONS YOU CAN BUILD UPON

ORANGE COUNTY LANDFILL
WESTERN BORROW AREA ELECTRICAL SYSTEM
UTILITIES SOLID WASTE DIVISION
ORANGE COUNTY, FLORIDA

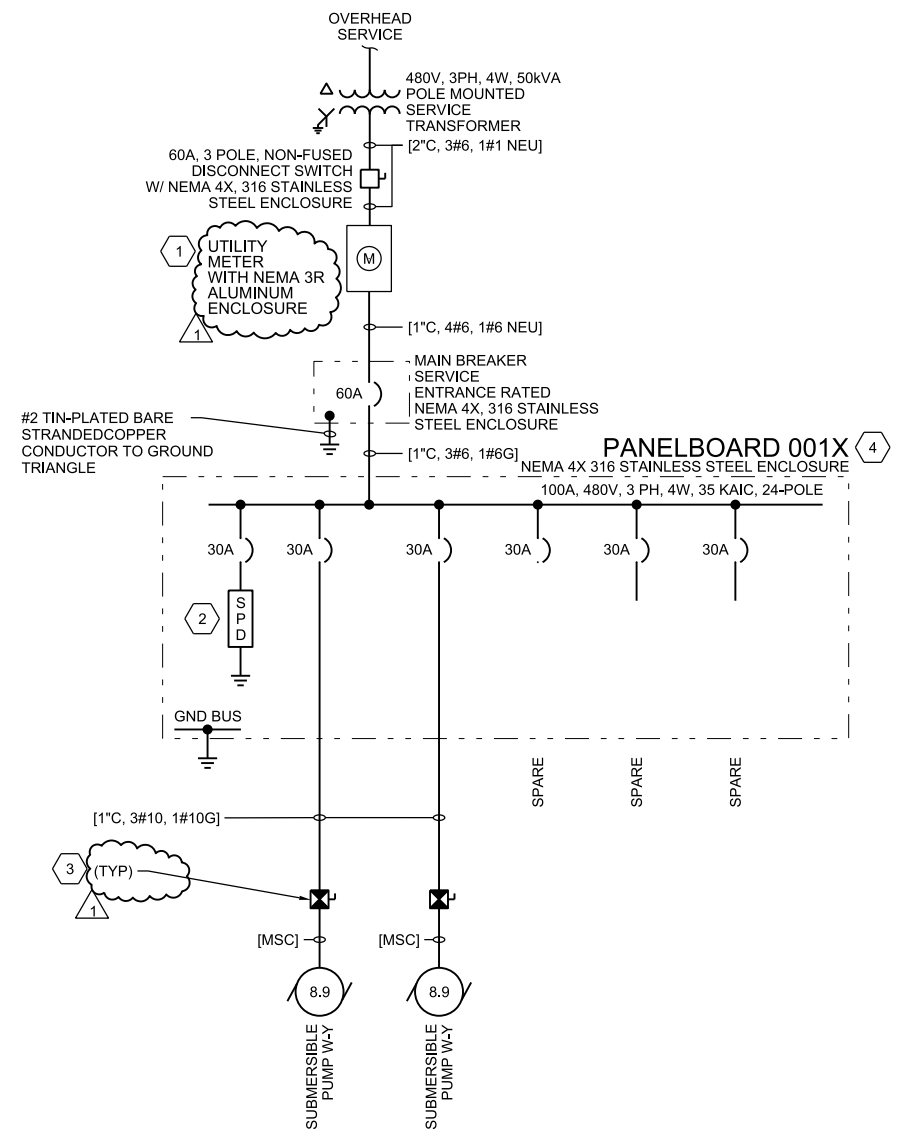
CH2MHILL[®]

ELECTRICAL
SITE PLAN

VERIFY SCALE	
BAR IS ONE INCH ON ORIGINAL DRAWING.	
DATE	MAY 2015
PROJ	456975
DWG	E-001
SHEET	3 of 5

NO.	DATE	REVISION	BY	APVD
1	07/20/15	ADDENDUM #2	BB	DN
DSGN		CHK	DR	APVD
			AL CLOUGH	D NICHOLSON
			B BRUNER	D NICHOLSON

A
B
C
D



SERVICE ENTRANCE EQUIPMENT 001C & 001D - ONE-LINE DIAGRAM

(X= C, Y= 7, 9)
(X= D, Y= 8, 10)

KEYED NOTES:

1. CONTRACTOR SHALL COORDINATE WITH POWER COMPANY FOR ALL SERVICE REQUIREMENTS.
2. PROVIDE CATEGORY C3, 10-MODE, 120 KA PER MODE SURGE PROTECTIVE DEVICES (SPD) INSIDE THE PANELBOARD ENCLOSURE OR IN A SEPARATE NEMA 4X STAINLESS STEEL ENCLOSURE WITH CONNECTING CONDUCTORS MAXIMUM OF 12" LONG.
3. PUMP CONTROL PANEL AND PUMP PROVIDED BY OWNER, INSTALLED BY CONTRACTOR.
4. SQUARE D NF PANELBOARD WITH BOLT-ON CIRCUIT BREAKERS OR APPROVED EQUAL.

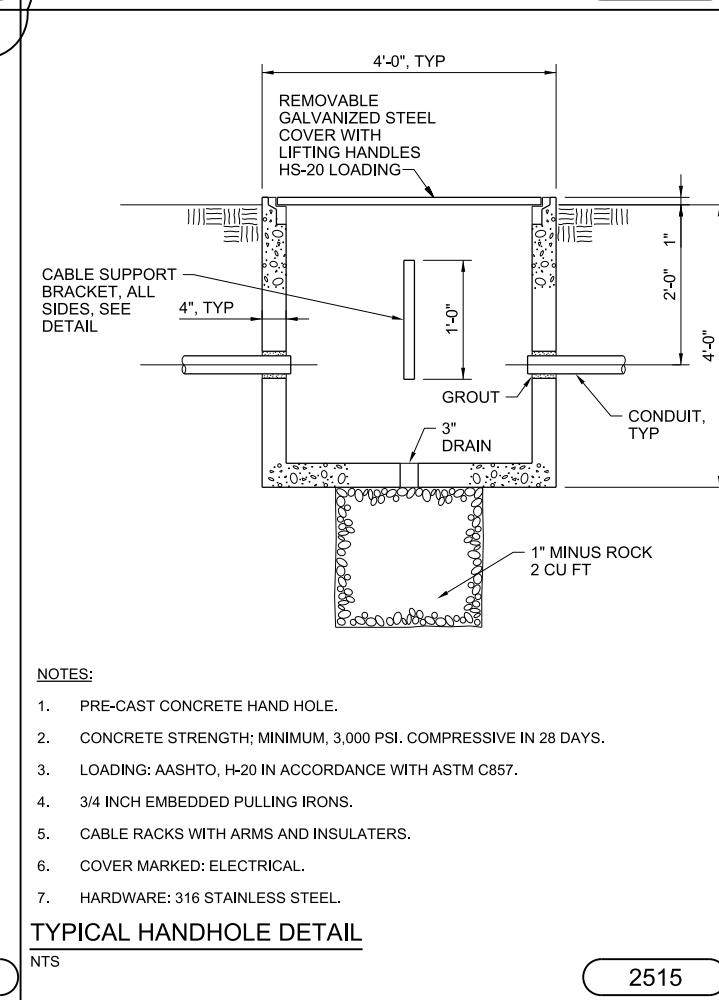
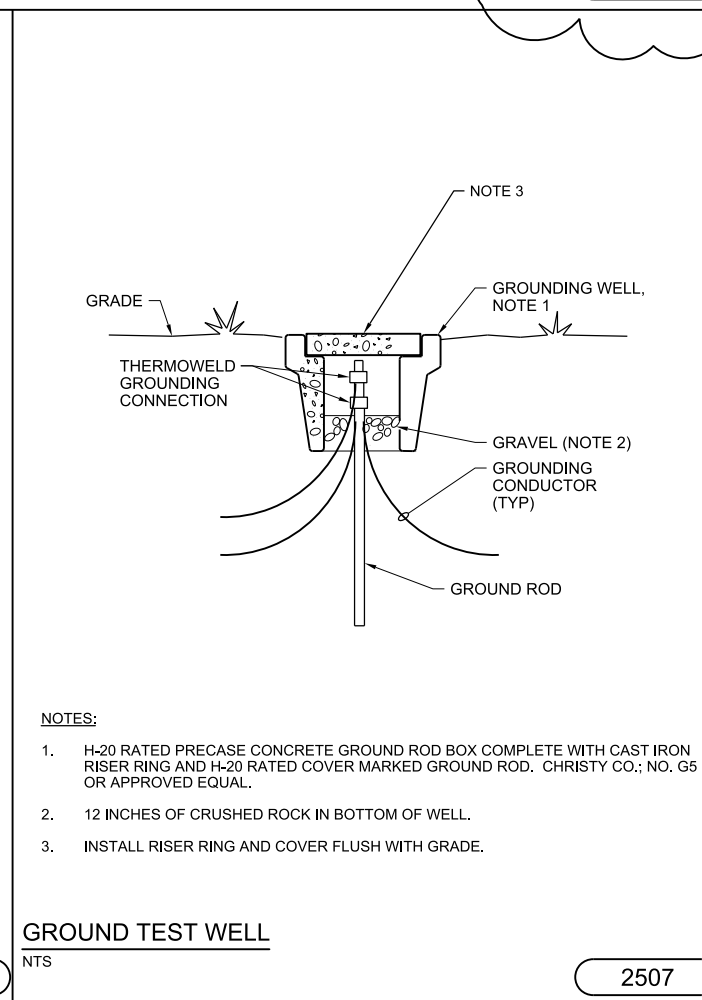
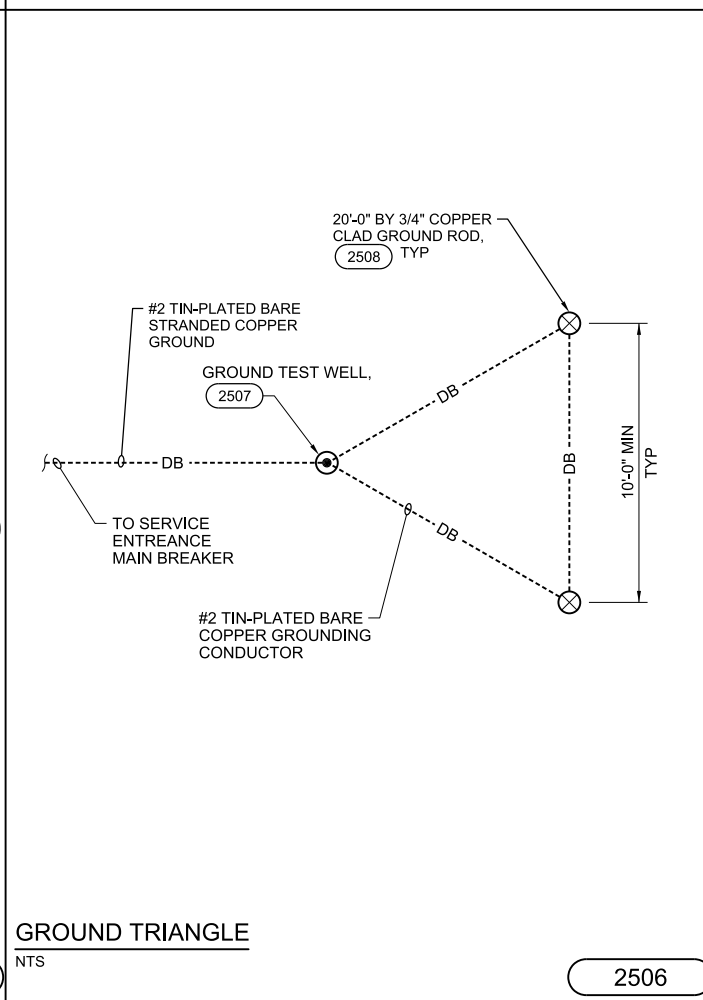
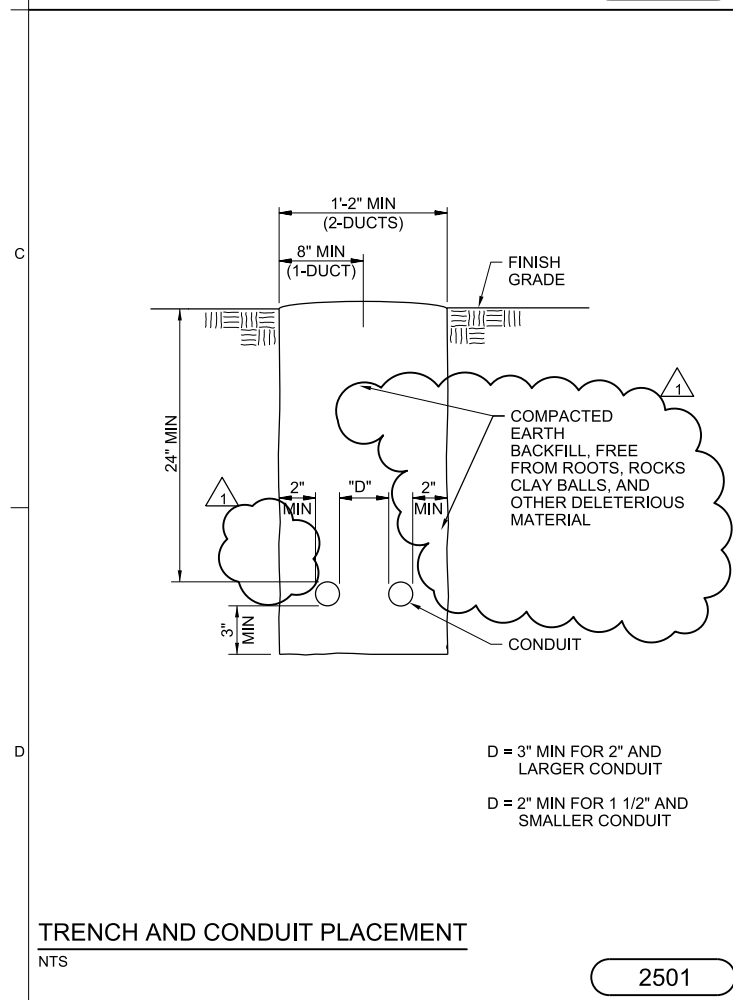
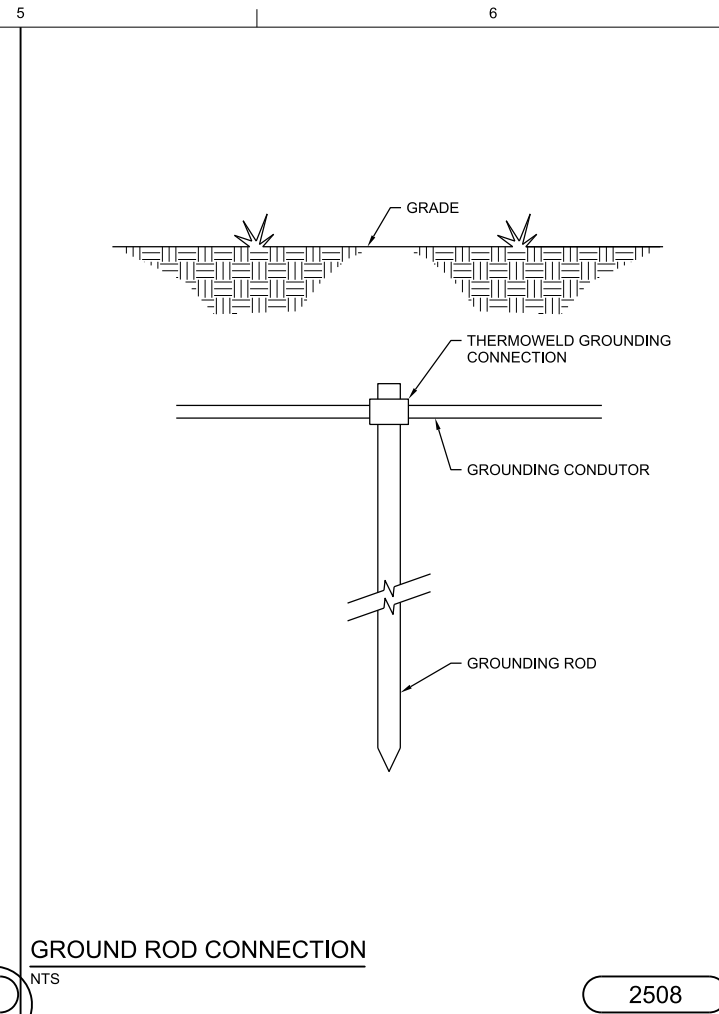
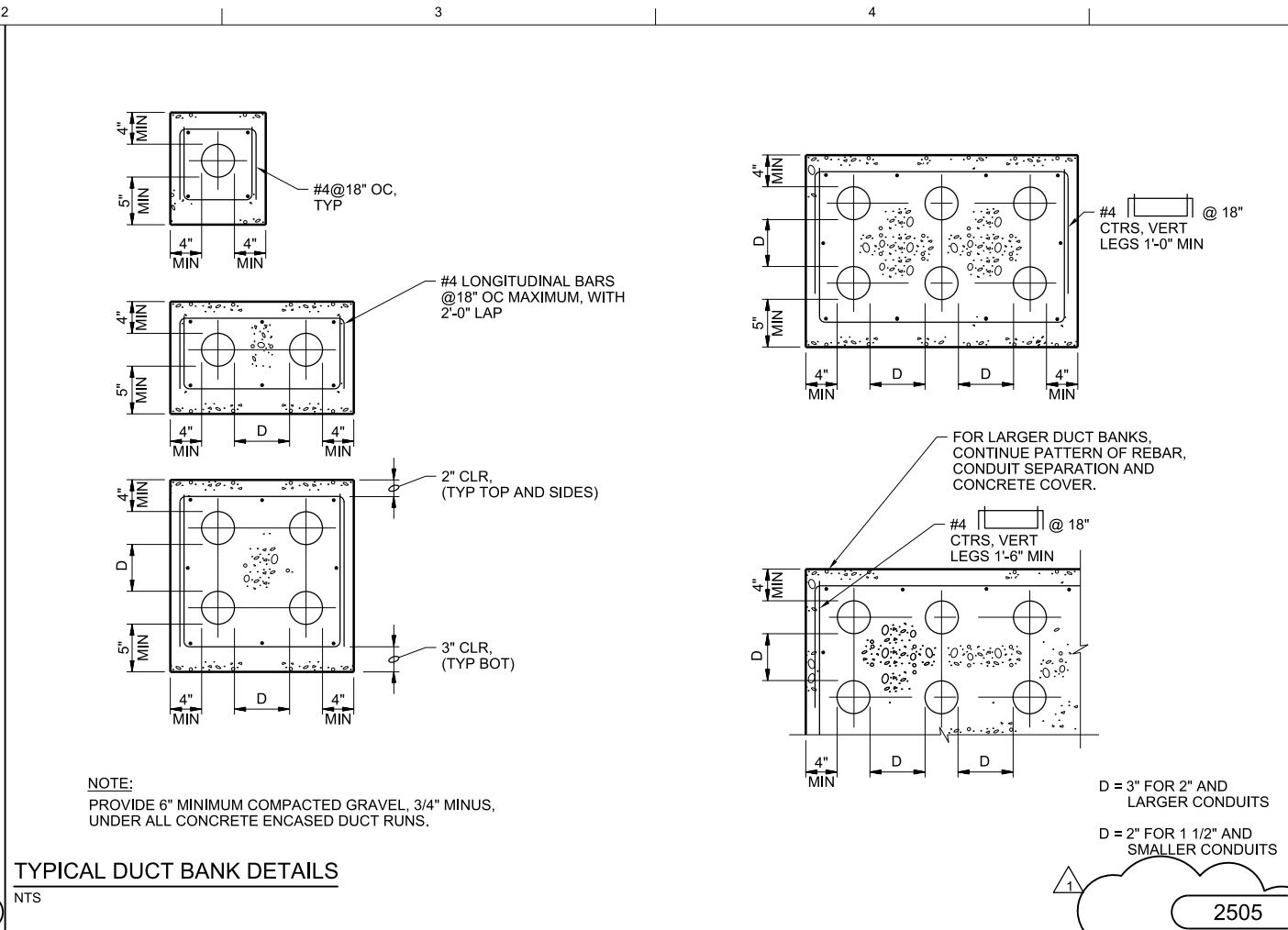
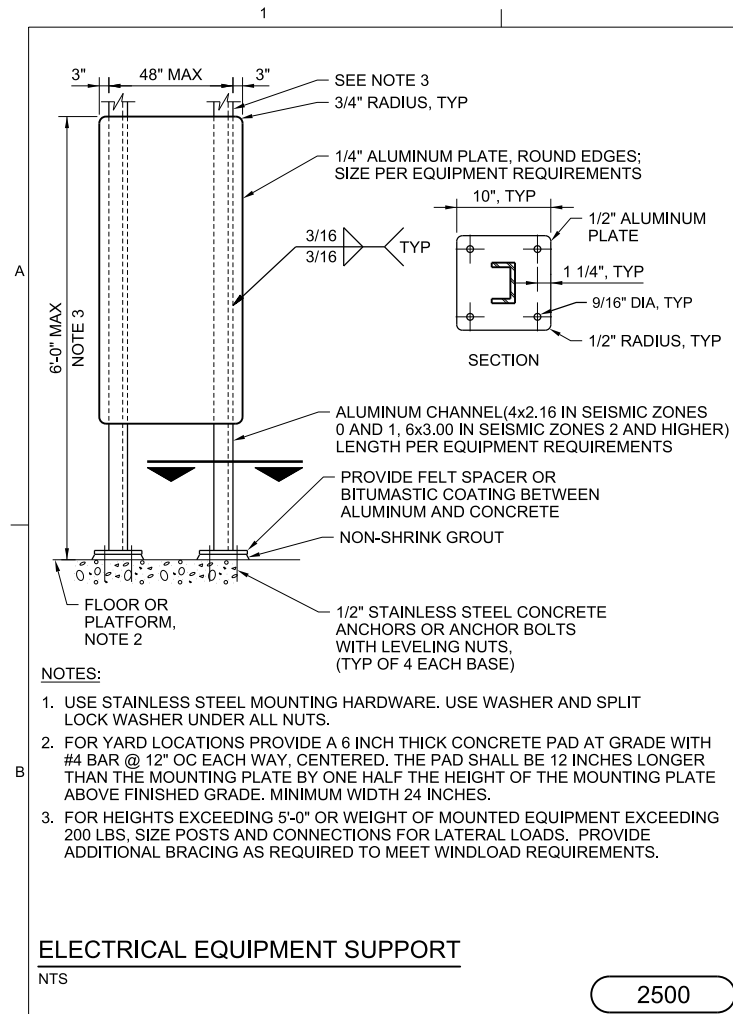


ORANGE COUNTY LANDFILL
WESTERN BORROW AREA ELECTRICAL SYSTEM
UTILITIES SOLID WASTE DIVISION
ORANGE COUNTY, FLORIDA

ELECTRICAL
ONE-LINE DIAGRAM

NTS	
VERIFY SCALE	
BAR IS ONE INCH ON ORIGINAL DRAWING.	
DATE	MAY 2015
PROJ	456975
DWG	E-002
SHEET	4 of 5

REUSE OF DOCUMENTS: THE DOCUMENT, AND THE IDEAS AND DESIGNS INCORPORATED HEREIN, AS AN INSTRUMENT OF PROFESSIONAL SERVICE, IS THE PROPERTY OF CH2M HILL AND IS NOT TO BE USED, IN WHOLE OR IN PART, FOR ANY OTHER PROJECT WITHOUT THE WRITTEN AUTHORIZATION OF CH2M HILL AND NEEL-SCHAFFER. © CH2M HILL AND NEEL-SCHAFFER 2013. ALL RIGHTS RESERVED.



CH2MHILL®		NEEL-SCHAFFER SOLUTIONS YOU CAN BUILD UPON	
ELECTRICAL		ORANGE COUNTY LANDFILL WESTERN BORROW AREA ELECTRICAL SYSTEM UTILITIES SOLID WASTE DIVISION ORANGE COUNTY, FLORIDA	
STANDARD DETAILS			
NTS			
VERIFY SCALE			
BAR IS ONE INCH ON ORIGINAL DRAWING.			
DATE	MAY 2015	BY	DN
PROJ	456975	CHK	APVD
DWG	E-003	DR	APVD
SHEET	5 of 5	DESIGN	1
	NO. DATE	REVISION	ADDENDUM #
	1 07/2015		
		CHK	APVD
		DR	APVD
		AL CLOUGH	D NICHOLSON
		B BRUNER	D NICHOLSON

REUSE OF DOCUMENTS: THIS DOCUMENT, AND THE IDEAS AND DESIGNS INCORPORATED HEREIN, AS AN INSTRUMENT OF PROFESSIONAL SERVICE, IS THE PROPERTY OF CH2M HILL AND IS NOT TO BE USED, IN WHOLE OR IN PART, FOR ANY OTHER PROJECT WITHOUT THE WRITTEN AUTHORIZATION OF CH2M HILL AND NEEL-SCHAFFER. © CH2M HILL AND NEEL-SCHAFFER 2013. ALL RIGHTS RESERVED.