

Issue Date: September 24, 2014

INVITATION FOR BIDS #Y15-139-JS

NOTICE IS HEREBY GIVEN that the Board of County Commissioners of Orange County, Florida, henceforth referred to as the County is accepting sealed bids for:

**CLEANING OF CATCH BASIN SEDIMENT FILTER BASKETS
TERM CONTRACT**

Sealed bid offers in an **original** and **three (3) copies** for furnishing the above will be accepted up to **2:00 PM (local time), Thursday, October 9, 2014**, in the Procurement Division, Internal Operations Centre II, 400 E. South Street, 2nd Floor, Orlando, FL 32801.

Copies of the bid documents may be obtained from the Orange County Procurement Division at the above address. Copies may be requested by phoning (407) 836-5635 or by download from the Internet at:

<http://apps.ocfl.net/orangebids/bidopen.asp>

Johnny M. Richardson, CPPO, CFCM
Manager, Procurement Division

NOTICE TO BIDDERS

To ensure that your bid is responsive, you are urged to request clarification or guidance on any issues involving this solicitation before submission of your response. Your point-of-contact for this solicitation is Jim Schell, Senior Purchasing Agent at Jim.Schell@ocfl.net.

TABLE OF CONTENTS

<u>DESCRIPTION</u>	<u>PAGE</u>
GENERAL TERMS AND CONDITIONS	2-14
SPECIAL TERMS AND CONDITIONS	15-25
SCOPE OF SERVICES	26-27
BID RESPONSE FORM	28-29
EMERGENCY CONTACT	30
ACKNOWLEDGEMENT OF ADDENDA	30
AUTHORIZED SIGNATORIES/NEGOTIATORS	31
REFERENCES	32-33
DRUG-FREE WORKPLACE FORM	
SCHEDULE OF SUBCONTRACTING FORM	
CONFLICT/NON-CONFLICT OF INTEREST FORM	
E-VERIFICATION CERTIFICATION	
RELATIONSHIP DISCLOSURE FORM	
RELATIONSHIP DISCLOSURE FORM - FREQUENTLY ASKED QUESTIONS (FAQ)	
ORANGE COUNTY SPECIFIC PROJECT EXPENDITURE REPORT	
EXPENDITURE REPORT- FREQUENTLY ASKED QUESTIONS (FAQ)	
AGENT AUTHORIZATION FORM	
EXHIBIT A – LEASED EMPLOYEE AFFIDAVIT	
EXHIBIT B – COMMERCIAL GENERAL LIABILITY	
EXHIBIT C – COMMERCIAL GENERAL LIABILITY	
EXHIBIT D – WORKERS COMPENSATION & EMPLOYEES LIABILITY INSURANCE POLICY	
EXHIBIT E – WAIVER OF TRANSFER OF RIGHTS OF RECOVERY AGAINST OTHERS TO US	

GENERAL TERMS AND CONDITIONS

1. GENERAL INFORMATION

These specifications constitute the complete set of requirements and bid forms. The bid response page(s), and all forms listed on the bid response page(s) shall be completed, signed, and sealed in an envelope bearing the bid number on the outside and mailed or presented to the Procurement Division on or before the specified time and date. **Failure to comply with the preceding requirements shall result in the rejection of the bid.**

Bids submitted by e-mail, telephone or fax shall not be accepted. An e-mailed or a faxed bid shall be rejected as non-responsive regardless of where it is received.

It is the sole responsibility of the Bidder to ensure that their bid reaches the Procurement Division. All bids, unless otherwise specified, must be delivered to the following address no later than the time and date specified in the solicitation:

Procurement Division
Internal Operations Centre II
400 E. South Street, 2nd Floor
Orlando, FL 32801

Bidders are cautioned that they are responsible for delivery to the specific location cited above. Therefore, if your bid is delivered by an express mail carrier or by any other means, it is your responsibility to ensure delivery to the above address. This office will not be responsible for deliveries made to any place other than the specified address.

The County shall not be responsible for delays caused by any occurrence. The time/date stamp clock located in the Procurement Division shall serve as the official authority to determine lateness of any bid. The bid time shall be scrupulously observed. Under no circumstances shall bids delivered after the time specified be considered. Late bids will be returned to the Bidder unopened. The decision to refuse to consider a bid that was received beyond the date/time established in the solicitation shall not be the basis for a protest pursuant to the Orange County Code (Procurement Ordinance).

All bids must be typewritten or filled in with pen and ink, and must be signed in ink by an officer or employee having authority to bind the company or firm. Errors, corrections, or changes on any document must be initialed by the signatory of the bid.

Bidders shall not be allowed to modify their bids after the opening time and date. Bid files may be examined during normal working hours, thirty (30) days after bid opening or upon recommendation for award, whichever occurs first. Bidders desiring to view these documents are urged to schedule an appointment.

For information concerning this bid, please contact the Procurement Division at the address listed above or by calling 407-836-5635. Please specify the bid number for which you are inquiring.

2. QUESTIONS REGARDING THIS SOLICITATION

All questions or concerns regarding this Invitation for Bids shall be submitted by email to Jim.Schell@ocfl.net, no later than 5:00 PM Tuesday, September 30, 2014 to the attention of Jim Schell, Procurement Division, referencing the IFB number. When required the Procurement Division shall issue an addendum to the Invitation for Bids. The addendum shall be available on the Internet for access by potential Bidders. Bidders are instructed not to contact the initiating division directly. No oral interpretation of this Invitation for Bids shall be considered binding. The County shall be bound by information and statements only when such statements are written and executed under the authority of the Manager, Procurement Division.

This provision exists solely for the convenience and administrative efficiency of Orange County. No Bidder or other third party gains any rights by virtue of this provision or the application thereof, nor shall any Bidder or third party have any standing to sue or cause of action arising there from.

3. FEDERAL AND STATE TAX

The County is exempt from Federal and State Sales and Use Taxes for tangible personal property (Certificate of Registry for tax transactions under Chapter 32, Internal Revenue Code and Florida Sales/Use Tax Exemption Certificate). The Manager, Procurement Division will sign an exemption certificate submitted by the Contractor.

Contractors doing business with the County shall not be exempted from paying sales tax to their suppliers for materials to fulfill contractual obligations with the County, nor shall any Contractor be authorized to use the County's Tax Exemption Number in securing such materials.

4. ACCEPTANCE/REJECTION/CANCELLATION

The County reserves the right to accept or to reject any or all bids and to make the award to that bidder who, in the opinion of the County, will be in the best interest of and/or the most advantageous to the County. The County also reserves the right to reject the bid of any bidder who has previously failed in the proper performance of an award or to deliver on time contracts of a similar nature or who, in the County's opinion, is not in a position to perform properly under this award. The County reserves the right to inspect all facilities of bidders in order to make a determination as to the foregoing. The County reserves the right to waive any irregularities and technicalities and may, at its discretion, request a re-bid. Award will be made to the lowest responsive and responsible bidder as determined by the County.

The County reserves the right, and the Manager, Procurement Division has absolute and sole discretion, to cancel a solicitation at any time prior to approval of the award by the Board of County Commissioners when such approval is required. The decision to cancel a solicitation cannot be the basis for a protest pursuant to the Orange County Code.

5. NO BID

Where more than one item is listed, any items not bid upon shall be indicated as "NO BID".

6. CONFLICT OF INTEREST

The award is subject to provisions of applicable State Statutes and County Ordinances. All bidders must disclose with their bid the name of any officer, director, or agent who is also an employee of Orange County. Further, all bidders must disclose the name of any County employee who owns, directly or indirectly, an interest of ten percent (10%) or more in the Bidder's firm or any of its branches. Should the Contractor permanently or temporarily hire any County employee who is, or has been, directly involved with the Contractor prior to or during performance of the resulting contract, the contract shall be subject to immediate termination by the County.

7. LEGAL REQUIREMENTS

All applicable Federal and State laws and County ordinances, that in any manner affect the items covered herein apply. Lack of knowledge by the Bidder shall in no way be a cause for relief from responsibility.

A. Contractors doing business with the County are prohibited from discriminating against any employees, applicant, or client because of race, religion, color, disability, national origin, gender, or age with regard to but not limited to the following: employment practices, rates of pay or other compensation methods, and training selection.

B. Minority/Women Business Enterprises (M/WBE) indicates a business entity of which 51% or more is owned and operated by a minority. In this instance, minority group members are citizens of the United States or lawfully admitted permanent residents who are Black, Hispanic, Women, Native American, Asian-Pacific, Asian-Indian. Businesses wishing to participate in the County procurement process as an M/WBE are required to complete a certification application to attain recognition as such. You may contact the Procurement Division or the Business Development Division for information and assistance.

8. MISTAKES

In the event of extension error(s), the unit price will prevail and the Bidder's total offer will be corrected accordingly. In the event of addition errors, the extended totals will prevail and the Bidder's total will be corrected accordingly.

Bidders must check their bid where applicable. Failure to do so will be at the Bidder's risk. Bids having erasures or corrections must be initialed in ink by the Bidder.

9. AVAILABILITY OF FUNDS

The obligations of the County under this award are subject to the availability of funds lawfully appropriated for its purpose by the State of Florida and the Orange County Board of County Commissioners, or other specified funding source for this procurement.

10. EEO STATEMENT

It is hereby declared that equal opportunity and nondiscrimination shall be the County's policy intended to assure equal opportunities to every person, regardless of race, religion, sex, sexual orientation and gender expression/identity, color, age, disability or national origin, in securing or holding employment in a field of work or labor for which the person is qualified, as provided by Section 17-314 of the Orange County Code and the County Administrative Regulations.

Further, the Contractor shall abide by the following provisions:

- A. The Contractor shall represent that the Contractor has adopted and maintains a policy of nondiscrimination as defined by applicable County ordinance throughout the term of this contract.
- B. The Contractor shall allow reasonable access to all business and employment records for the purpose of ascertaining compliance with the non-discrimination provision of the contract.

The provisions of the prime contract shall be incorporate by the Contractor into the contracts of any applicable subcontractors.

11. BID TABULATION AND RESULTS

Bid tabulations shall be available thirty (30) days after opening on the Orange County website at: <http://apps.ocfl.net/orangebids/bidresults/results.asp>, or upon notice of intended action, whichever is sooner.

12. BID FORMS

All bids must be submitted on the County's standard Bid Response Form. Bids on Bidder's quotation forms shall not be accepted.

13. FLORIDA PREFERENCE

In the event this Invitation for Bids is to acquire personal property and the lowest responsive and responsible bid submitted in response to this Invitation for Bids, is by a bidder whose principal place of business is in a state other than Florida

and such state or political subdivision thereof grants a preference for the purchase of personal property to a person whose principal place of business is in said state, then Orange County Florida may award a preference to the lowest responsive and responsible bidder having a principal place of business within the State of Florida. Such preference shall be equal to the preference granted by the state in which the lowest responsive and responsible bidder has its principal place of business. This section shall not apply to transportation projects in which Federal aid funds are used.

Any bidder whose principal place of business is outside the State of Florida must accompany any written bid documents with a written opinion of an attorney at law licensed to practice law in that foreign state, as to the preferences, if any or none, granted by the law of that state to its own business entities whose principal places of business are in that foreign state in the letting of any or all public contracts. Reference Florida Statutes 287.084.

14. RECIPROCAL PREFERENCE

In the event the lowest responsive and responsible bid submitted in response to any Invitation for Bids is by a bidder whose principal place of business is in a county other than Orange County, and such county grants a bid preference for purchases to a bidder whose principal place of business is in such a county, then Orange County may award a preference to the next lowest responsive and responsible bidder having a principal place of business within Orange County Florida. Such preference shall be equal to the preference granted by the county in which the lowest responsive and responsible bidder has its principal place of business.

15. POSTING OF RECOMMENDED AWARD AND PROTESTS

The recommended award will be posted for review by interested parties at the Procurement Division and at:

<http://apps.ocfl.net/OrangeBids/AwardsRec/default.asp> prior to submission through the appropriate approval process and will remain posted for a period of five (5) full business days.

- **Orange County Lobbyist Regulations General Information**
<http://www.orangecountyfl.net/OpenGovernment/LobbingAtOrangeCounty.aspx>

A lobbying blackout period shall commence upon issuance of the solicitation until the Board selects the Contractor. For procurements that do not require Board approval, the blackout period commences upon solicitation issuance and concludes upon contract award.

The Board of County Commissioners may void any contract where the County Mayor, one or more County Commissioners, or a County staff person has been lobbied in violation of the black-out period restrictions of Ordinance No. 2002-15.

- **Orange County Protest Procedures**
<http://www.orangecountyfl.net/VendorServices/VendorProtestProcedures.aspx>

Failure to file a protest with the Manager, Procurement Division by 5:00 PM on the fifth full business day after posting, shall constitute a waiver of bid protest proceedings.

16. BID AND RELATED COSTS

By submission of a bid, the Bidder agrees that any and all costs associated with the preparation of the bid will be the sole responsibility of the Bidder. The Bidder also agrees that the County shall bear no responsibility for any costs associated with the preparation of the bid including but not limited to any administrative or judicial proceedings resulting from the solicitation process.

17. CONTRACTUAL AGREEMENT

This Invitation for Bids shall be included and incorporated in the final contract or purchase order. The order of contract precedence will be the contract (purchase order), bid document, and response. Any and all legal actions associated with this Invitation for Bids and/or the resultant contract (purchase order) shall be governed by the laws of the State of Florida. Venue for any litigation involving this contract shall be the Ninth Circuit Court in and for Orange County, Florida.

18. PUBLIC ENTITY CRIME

Section 287.133(3)(d), Florida Statutes, provides that the Florida Department of Management Services shall maintain a list of the names and addresses of those who have been disqualified from participating in the public contracting process under this section.

http://www.dms.myflorida.com/business_operations/state_purchasing/vendor_information/convicted_suspended_discriminatory_complaints_vendor_lists/convicted_vendor_list

A person or affiliate who has been placed on The Convicted Vendor list following a conviction for a public entity crime shall not submit a bid on a contract with a public entity for the construction or repair of a public building or public work, shall not submit bids on leases of real property to a public entity, shall not be awarded or perform work as a contractor, supplier, subcontractor, or consultant under a contract with a public entity, and shall not transact business with any public entity in excess of the threshold amount provided in Florida Statute Section 287.017, for CATEGORY TWO for a period of thirty-six (36) months from the date of being placed on The Convicted Vendor List.

19. DRUG-FREE WORKPLACE FORM

The Drug-Free Workplace Form is attached and shall be completed and submitted with your bid.

20. SUBCONTRACTING

Bidders subcontracting any portion of the work shall state name and address of subcontractor and the name of the person to be contacted on the attached "Schedule of Subcontractors Form".

21. CONFLICT OF INTEREST FORM

Bidder shall complete the Conflict of Interest Form attached hereto and submit it with their bid.

22. ETHICS COMPLIANCE

The following forms are included in this solicitation and shall be completed and submitted as indicated below:

- A. **Orange County Specific Project Expenditure Report** -The purpose of this form is to document any expenses incurred by a lobbyist for the purposes described in **Section 2-351, Orange County Code**. This form shall be completed and submitted with all bid responses to an Orange County solicitation. Any questions concerning this form shall be addressed to the purchasing agent identified in the applicable solicitation.
- B. **Relationship Disclosure Form** – The purpose of this form is to document any relationships between a bidder to an Orange County solicitation and the Mayor or any other member of the Orange County Board of County Commissioners. This form shall be completed and submitted with the applicable bid to an Orange County solicitation.

No contract award shall be made unless these forms have been completed and submitted with the bid. Any questions concerning these forms shall be addressed to the purchasing agent identified in this solicitation. Also, a listing of the most frequently asked questions concerning these forms is attached to each for your information.

23. SUBMISSION OF BID

The bid must be mailed or hand delivered in a sealed envelope to:

ORANGE COUNTY PROCUREMENT DIVISION
Internal Operations Centre II
400 E. South Street, 2nd Floor
Orlando, Florida 32801

Bidders must indicate on the sealed envelope the following:

- A. Invitation for Bids Number
- B. Hour and Date of Opening
- C. Name of Bidder

Bids received after the time, date, and/or at the location specified, due to failure to identify the envelope with the above information shall be rejected.

24. COPIES

Copies of documents, records, materials, and/or reproductions requests will be charged in accordance with Orange County's fee schedule. Copyrighted materials may be inspected, but cannot be copied or reproduced per Federal law.

25. PROPRIETARY/RESTRICTIVE SCOPE OF WORK/SERVICES

If a prospective bidder considers the scope of work/services contained herein to be proprietary or restrictive in nature, thus potentially resulting in reduced competition, they are urged to contact the Procurement Division prior to bid opening. Specifications which are unrelated to performance will be considered for deletion via addendum to this Invitation for Bids.

26. ASSISTANCE WITH SCOPE OF WORK/SERVICES

Any prospective bidder who assisted the County in developing or writing the scope of work/services contained herein are requested to so note such on the bid response page.

27. PAYMENT TERMS/DISCOUNTS

The County's payment terms are in accordance with Florida Statute 218, Local Government Prompt Payment Act. Cash discounts for prompt payment shall not be considered in determining the lowest net cost for bid evaluation purposes.

28. PATENTS AND ROYALTIES

Unless otherwise provided, the Contractor shall be solely responsible for obtaining the right to use any patented or copyrighted materials in the performance of the contract resulting from this Invitation for Bids.

The Contractor, without exception, shall indemnify and save harmless the County and its employees from liability of any nature or kind, including cost and expenses for or on account of any copyrighted, patented, or unpatented invention, process, or article manufactured or supplied by the Contractor. In the event of any claim against the County of copyright or patent infringement, the County shall promptly provide written notification to the Contractor. If such a claim is made, the Contractor shall use its best efforts to promptly purchase for the County any infringing products or services or procure a license, at no cost to the County, which will allow continued use of the service or product.

If none of the alternatives are reasonably available, the County agrees to return the article on request to the Contractor and receive reimbursement, if any, as may be determined by a court of competent jurisdiction.

29. INDEMNIFICATION

To the fullest extent permitted by law, the Contractor shall defend, indemnify, and hold harmless the County, its officials, agents, and employees from and against any and all claims, suits, judgments, demands, liabilities, damages, cost and expenses including attorney's fees of any kind or nature whatsoever arising directly or indirectly out of or caused in whole or in part by any act or omission of the Contractor or its subcontractors, anyone directly or indirectly employed by them, or anyone for whose acts any of them may be liable; excepting those acts or omissions arising out of the sole negligence of the County.

30. CLARIFICATIONS

It is the Bidder's responsibility to become familiar with and fully informed regarding the terms, conditions and specifications of this Invitation for Bids. Lack of understanding and/or misinterpretation of any portions of this Invitation for Bids shall not be cause for withdrawal of your bid after opening or for subsequent protest of award. Bidder's must contact the Procurement Division, at the phone number on the bid cover sheet prior to bid opening, should clarification be required.

Modification or alteration of the documents contained in the solicitation or contract shall only be valid if mutually agreed to in writing by the Bidder and the County.

31. CERTIFICATION OF INDEPENDENT PRICE DETERMINATION

By submission of this bid, the Bidder certifies, and in the case of a joint bid each party thereto certifies as to its own organization, that in connection with this procurement:

- A. The prices in this bid have been arrived at independently, without consultation, collusion, communication, or agreement for the purpose of restricting competition, as to any matter relating to such prices with any other bidder or with any competitor.
- B. Unless otherwise required by law, the prices which have been quoted in this bid have not been knowingly disclosed by the Bidder and will not knowingly be disclosed by the Bidder prior to opening, directly or indirectly to any other Bidder or to any competitor; and,
- C. No attempt has been made or shall be made by the Bidder to induce any other person or bidder to submit or not to submit a bid for the purpose of restricting competition.

32. SUCCESSORS AND ASSIGNS

The County and the Contractor each binds itself and its partners, successors, executors, administrators, and assigns to the other party of this Contract and to the partners, successors, executors, administrators, and assigns of such other party, in respect to all covenants of this Contract. Except as above, neither the County nor the Contractor shall assign, sublet, convey or transfer its interest in this Contract without the written consent of the other. Nothing herein shall be construed as creating any personal liability on the part of any officer or agent of the County which may be a party hereto, nor shall it be construed as giving any rights or benefits hereunder to anyone other than the County and the Contractor.

33. PRICING/AUDIT

The Contractor shall establish and maintain a reasonable accounting system, which enables ready identification of Contractor's cost of goods and use of funds. Such accounting system shall also include adequate records and documents to justify all prices for all items invoiced as well as all charges, expenses and costs incurred in providing the services for at least five (5) years after completion of this contract. The County or its designee shall have access to such books, records, subcontract(s), financial operations, and documents of the Contractor or its subcontractors, as required to comply with this section for the purpose of inspection or audit anytime during normal business hours at the Contractor's place of business. This right to audit shall include the Contractor's subcontractors used to procure services under the contract with the County. Contractor shall ensure the County has these same rights with subcontractors and suppliers.

34. EMPLOYEES OF THE CONTRACTOR

All work under this contract shall be performed in a professional and skillful manner. The County may require, in writing, that the Contractor, remove from this contract any employee the County deems incompetent, careless, or otherwise objectionable.

35. TOBACCO FREE CAMPUS

All Orange County operations under the Board of County Commissioners shall be tobacco free. This policy shall apply to parking lots, parks, break areas and worksites. It is also applicable to Contractors and their personnel during contract performance on County owned property. Tobacco is defined as tobacco products including, but not limited to, cigars, cigarettes, e-cigarettes, pipes, chewing tobacco and snuff. Failure to abide by this policy may result in civil penalties levied under Chapter 386, Florida Statutes and/or contract enforcement remedies.

36. CONTRACT CLAIMS

“Claim” as used in this provision means a written demand or written assertion by one of the contracting parties seeking as a matter of right, the payment of a certain sum of money, the adjustment or interpretation of contract terms, or other relief arising under or relating to this contract.

Claims made by a Contractor against the County, relating to a particular contract shall be submitted to the Manager, Procurement Division in writing clearly labeled “Contract Claim” requesting a final decision. The Contractor also shall provide with the claim a certification as follows: “I certify that the claim is made in good faith; that the supporting data are accurate and complete to the best of my knowledge and belief; that the amount requested accurately reflects the contract adjustment for which the Contractor believes the County is liable; and that I am duly authorized to certify the claim on behalf of the Contractor.”

Failure to document a claim in this manner shall render the claim null and void. No claim shall be accepted after final payment of the contract.

The decision of the Manager, Procurement Division shall be issued in writing and furnished to the Contractor. The decision shall state the reasons for the decision reached. The Manager, Procurement Division shall render the final decision within sixty (60) days after receipt of Contractor’s written request for a final decision. The Manager, Procurement Division decision shall be final and conclusive.

The Contractor shall proceed diligently with performance of this contract pending final resolution of any request for relief, claim, appeal or action arising under the contract and shall comply with any final decision rendered by the Manager, Procurement Division.

37. VERIFICATION OF EMPLOYMENT STATUS

Prior to the employment of any person under this contract, the Contractor shall utilize the U.S. Department of Homeland Security’s E-Verify system to verify the employment eligibility of (a) all persons employed during the contract term by the Contractor to perform employment duties within Florida and (b) all persons, including subcontractors, assigned by the Contractor to perform work pursuant to the contract with Orange County. For more information on this process, please refer to United States Citizenship and Immigration Service site at:

<http://www.uscis.gov/portal/site/uscis>.

Only those employees determined eligible to work within the United States shall be employed under this contract.

By submission of a bid in response to this solicitation, the Contractor affirms that all employees in the above categories shall undergo e-verification before placement on this contract. The Contractor shall commit to comply with this requirement by completing the E-Verification certification, attached to this solicitation.

38. CONFIDENTIAL INFORMATION

In accordance with Chapter 119 of the Florida Statutes (Public Records Law), and except as many be provided by other applicable State or Federal Law, all proposers should be aware that Invitation for Bids and the responses thereto are in the public domain. Bidders must identify specifically any information contained in their response which they consider confidential and/or proprietary and which they believe to be exempt from disclosure, **citing specifically the applicable exempting law**. If a Bidder fails to cite the applicable exempting law, we will treat the information as public.

SPECIAL TERMS AND CONDITIONS

1. QUALIFICATION OF BIDDERS

The Bidder shall submit the following information with the bid:

- A. List and brief description of similar work satisfactorily completed with location, dates of contract, names, addresses, email addresses and telephone numbers of owners by completing the attached reference sheets.
- B. A statement on bidder's letterhead attesting to having a minimum of three (3) years of experience in the cleaning of stormwater catch basins.
- C. A list of equipment which will be used in the performance of the contract.
- D. List of personnel who will be directly responsible for the Orange County account (Contractor point of contact) to include office physical location (address), telephone number, pager number and/or cell telephone number and e-mail address.
- E. A statement attesting that the Contractor is capable of complying with paragraph number 5 of the Scope of Services, which requires electronic data documentation and transmission of data via e-mail.

Failure to submit the above requested information may be cause for rejection of your bid.

The determination on whether a bidder is responsible or not shall be at the sole discretion of the County. Although the County may request the submission of a minimum number of contracts similar to the requirements of this solicitation with certain minimum dimensions, quantities, dollar values, etc., the County's determination of a bidder's responsibility shall not be solely based on the number of similar procurements the bidder provides but the entirety of the bidder's qualifications.

2. LICENSES AND PERMITS

Prior to furnishing the requested service(s), it shall be the responsibility of the Contractor to obtain, at no additional cost to Orange County, any and all licenses and permits required to complete all contractual requirements. These licenses and permits shall be readily available for review by the Manager, Procurement Division or authorized designee.

3. BID ACCEPTANCE PERIOD

A bid shall constitute an irrevocable offer for a period of ninety (90) days from the bid opening date or until the date of award. In the event that an award is not made by the County within ninety (90) days from the bid opening date, the Bidder may withdraw their bid or provide a written extension of their bid.

4. **AWARD**

Award shall be made on an “All-or-None Total Bid”, or “All-or-None Total Estimated Bid” basis to the lowest responsive and responsible Bidder.

5. **POST AWARD MEETING**

Within ten (10) days after receipt of notification of award of bid, Contractor shall meet with the County’s representative(s) to discuss job procedures and scheduling.

6. **PERFORMANCE**

Timely performance is of the essence in the award of this Invitation for Bids. Performance shall be no later than ten (10) calendar days from receipt of delivery order. Bids which fail to meet this requirement shall be rejected.

It is hereby understood and mutually agreed to by and between parties hereto that the time of performance is an essential condition of this contract.

Should the Contractor neglect, fail or refuse to provide the services within the time herein specified, then said Contractor does hereby agree as part of the consideration for the awarding of this contract, to pay Orange County the sum extended by the County to contract for like services approved by the Procurement Division for the period from the required scheduled commencement date until performance of services covered in the Invitation for Bids is completed.

The Contractor shall, within five (5) calendar days from the beginning of such delay, notify the Manager, Procurement Division in writing of the cause(s) of the delay.

7. **TERMINATION**

A. **Termination for Default:**

The County may, by written notice to the Contractor terminate this contract for default in whole or in part (delivery orders, if applicable) if the Contractor fails to:

1. Provide services that comply with the scope of work/services herein or fails to meet the County’s performance standards
2. Perform the services within the time specified in this contract or any extension.
3. Make progress so as to endanger performance of this contract
4. Perform any of the other provisions of this contract.

Prior to termination for default, the County shall provide adequate written notice to the Contractor through the Manager, Procurement Division, affording the opportunity to cure the deficiencies or to submit a specific plan to resolve the deficiencies within ten (10) calendar days (or the period specified in the notice) after receipt of the notice. Failure to adequately cure the deficiency shall result in termination action. Such termination may also result in suspension or debarment of the Contractor in accordance with the County's Procurement Ordinance. The Contractor and its sureties (if any) shall be liable for any damage to the County resulting from the Contractor's default of the contract. This liability includes any increased costs incurred by the County in completing contract performance.

In the event of termination by the County for any cause, the Contractor shall have, in no event, any claim against the County for lost profits or compensation for lost opportunities. After a receipt of a Termination Notice and except as otherwise directed by the County the Contractor shall:

1. Stop work on the date and to the extent specified.
2. Terminate and settle all orders and subcontracts relating to the performance of the terminated work
3. Transfer all work in process, completed work, and other materials related to the terminated work as directed by the County.
4. Continue and complete all parts of that work that have not been terminated.

If the Contractor's failure to perform the contract arises from causes beyond the control and without the fault or negligence of the Contractor the contract shall not be terminated for default. Examples of such causes include (1) acts of God or the public enemy, (2) acts of a government in its sovereign capacity, (3) fires, (4) floods, (5) epidemics, (6) strikes and (7) unusually severe weather.

B. Termination for Convenience:

The County, by written notice, may terminate this contract, in whole or in part, when it is in the County's interest. If this contract is terminated, the County shall be liable only for services rendered and accepted. The County Notice of Termination shall provide the Contractor thirty (30) calendar days prior notice before it becomes effective. **A termination for convenience may apply to individual delivery orders, purchase orders or to the contract in its entirety.**

8. COMPLIANCE WITH OCCUPATIONAL SAFETY AND HEALTH

By submission of a bid in response to this solicitation, the Bidder certifies that all material, equipment, etc., contained in their bid meets all OSHA requirements. Bidder further certifies that if they are the awarded Contractor, and the material, equipment, etc., delivered is subsequently found to be deficient in any OSHA requirements in effect on date of delivery, all costs necessary to bring the material, equipment, etc., into compliance with the aforementioned requirements shall be borne by the Contractor.

9. CODES AND REGULATIONS

The Contractor shall strictly comply with all Federal, State and local codes and regulations.

10. PAYMENT

Partial payments for the value of services rendered and accepted may be requested by the submission of a properly executed invoice, with supporting documents if required. Payment shall be made in accordance with Florida Statute 218, Local Government Prompt Payment Act. Payment for accepted services shall be accomplished by submission of an invoice, in duplicate, to:

Orange County Environmental Protection Division
800 Mercy Drive, Suites 4 & 6
Orlando, FL 32808
Phone 407-836-1400

In the event additional County Departments/Division or other public entities utilize this contract, invoices are to be sent directly to the Department or entity placing the order.

11. DEBRIS

Contractor shall be responsible for the prompt removal of all debris which is a result of this contractual service.

12. SAFETY AND PROTECTION OF PROPERTY

The Contractor shall at all times:

- A. Initiate, maintain and supervise all safety precautions and programs in connection with its services or performance of its operations under this contract.
- B. Take all reasonable precautions to prevent injury to employees, including County employees and all other persons affected by their operations.

- C. Take all reasonable precautions to prevent damage or loss to property of Orange County, or of other Contractors, consultants or agencies and shall be held responsible for replacing or repairing any such loss or damage.
- D. Comply with all ordinances, rules, regulations, standards and lawful orders from authority bearing on the safety of persons or property or their protection from damage, injury or loss. This includes but is not limited to:
 - o Occupational Safety and Health Act (OSHA)
 - o National Institute for Occupational Safety & Health (NIOSH)
 - o National Fire Protection Association (NFPA)
 - o American Society of Heating, Refrigeration & Air-Conditioning Engineers (ASHRAE)
- E. The Contractor shall also comply with the guidelines set forth in the Orange County Safety & Health Manual. The manual can be accessed online at the address listed below:

<http://www.orangecountyfl.net/VendorServices/OrangeCountySafetyandHealthManual.aspx>

13. **INSURANCE REQUIREMENTS**

Contractor agrees to maintain on a primary basis and at its sole expense, at all times throughout the duration of this contract the following types of insurance coverage with limits and on forms (including endorsements) as described herein. These requirements, as well as the County's review or acceptance of insurance maintained by Vendor/Contractor is not intended to and shall not in any manner limit or qualify the liabilities assumed by Vendor/Contractor under this contract. Contractor is required to maintain any coverage required by federal and state workers' compensation or financial responsibility laws including but not limited to Chapter 324 and 440, Florida Statutes, as may be amended from time to time.

The Contractor shall require and ensure that each of its sub-Contractors providing services hereunder (if any) procures and maintains until the completion of their respective services, insurance of the types and to the limits specified herein.

Insurance carriers providing coverage required herein must be licensed to conduct business in the State of Florida and must possess a current A.M. Best's Financial Strength Rating of A- Class VIII or better.

(Note: State licenses can be checked via www.floir.com/companysearch/ and A.M. Best Ratings are available at www.ambest.com)

Required Coverage:

- Commercial General Liability - The Contractor shall maintain coverage issued on the most recent version of the ISO form as filed for use in Florida or its equivalent, with a limit of liability of not less than \$1,000,000 per occurrence.

Contractor further agrees coverage shall not contain any endorsement(s) excluding or limiting Product/Completed Operations, Contractual Liability, or Separation of Insureds. The General Aggregate limit shall either apply separately to this contract or shall be at least twice the required occurrence limit.

Required Endorsements:

- Additional Insured- CG 20 26 or CG 20 10/CG 20 37 or their equivalents.
Note: CG 20 10 must be accompanied by CG 20 37 to include products/completed operations
- Waiver of Transfer of Rights of Recovery- CG 24 04 or its equivalent.
Note: If blanket endorsements are being submitted please include the entire endorsement and the applicable policy number.
- Business Automobile Liability - The Contractor shall maintain coverage for all owned; non-owned and hired vehicles issued on the most recent version of the ISO form as filed for use in Florida or its equivalent, with limits of not less than \$1,000,000 per accident. In the event the Vendor/Contractor does not own automobiles the Contractor shall maintain coverage for hired and non-owned auto liability, which may be satisfied by way of endorsement to the Commercial General Liability policy or separate Business Auto Liability policy.
- Workers' Compensation - The Contractor shall maintain coverage for its employees with statutory workers' compensation limits, and no less than \$500,000 each incident of bodily injury or disease for Employers' Liability. Elective exemptions as defined in Florida Statute 440 will be considered on a case-by-case basis. Any Contractor using an employee leasing company shall complete the Leased Employee Affidavit.

Required Endorsements:

- Waiver of Subrogation- WC 00 03 13 or its equivalent

When a self-insured retention or deductible exceeds \$100,000 the COUNTY reserves the right to request a copy of Vendor/Contractor most recent annual report or audited financial statement. For policies written on a "Claims-Made" basis the Contractor agrees to maintain a retroactive date prior to or equal to the effective date of this contract. In the event the policy is canceled, non-renewed, switched to occurrence form, or any other event which triggers the right to purchase a Supplemental Extended Reporting Period (SERP) during the life of this contract the Contractor agrees to purchase the SERP with a minimum reporting period of not less than two years. Purchase of the SERP shall not relieve the Vendor/Contractor of the obligation to provide replacement coverage.

By entering into this contract Contractor agrees to provide a waiver of subrogation or a waiver of transfer of rights of recovery, in favor of the County for the workers' compensation and general liability policies as required herein. When required by the insurer or should a policy condition not permit the Contractor to enter into a pre-loss agreement to waive subrogation without an endorsement, then Contractor agrees to notify the insurer and request the policy be endorsed with a Waiver of Subrogation or a Waiver of Transfer of Rights of Recovery Against Others endorsement.

Prior to execution and commencement of any operations/services provided under this contract the Contractor shall provide the COUNTY with current certificates of insurance evidencing all required coverage. In addition to the certificate(s) of insurance the Contractor shall also provide endorsements for each policy as specified above. All specific policy endorsements shall be in the name of the Orange County Board of County Commissioners.

For continuing service contracts renewal certificates shall be submitted immediately upon request by either the COUNTY or the COUNTY's contracted certificate compliance management firm. The certificates shall clearly indicate that the Contractor has obtained insurance of the type, amount and classification as required for strict compliance with this insurance section. Contractor shall notify the COUNTY not less than thirty (30) business days (ten business days for non-payment of premium) of any material change in or cancellation/non-renewal of insurance coverage. The Contractor shall provide evidence of replacement coverage to maintain compliance with the aforementioned insurance requirements to the COUNTY or its certificate management representative five (5) business days prior to the effective date of the replacement policy(ies).

The certificate holder shall read:

Orange County Board of County Commissioners
c/o Procurement Division
400 E. South Street, 2nd Floor
Orlando, Florida 32801

14. CONTRACT TERM – OPTION YEARS

The contract resulting from this solicitation shall extend for a period of one (1) year. The County may unilaterally renew the contract for the periods specified on the Bid Response Form for three (3) years.

The County may unilaterally extend the term of this contract by written notice to the Contractor at least ninety (90) days before the expiration of any contract term. The exercise of the option shall be for the period specified and for the prices listed on the Bid Response Form. All other terms and conditions of the contract shall apply to the option periods.

After all options have been exercised, and it is determined that interim performance is required to allow for the solicitation and award of a new contract, the County may unilaterally extend the contract for a maximum period of six (6) months. Pricing, delivery and all other terms and conditions of the contract shall apply during this period. The total duration of this contract, including the exercise of all options, shall not exceed 3.5 years.

15. USE OF CONTRACT BY OTHER GOVERNMENT AGENCIES

At the option of the Contractor, the use of the contract resulting from this solicitation may be extended to other governmental agencies, including the State of Florida, its agencies, political subdivisions, counties, and cities.

Each governmental agency allowed by the Contractor to use this contract shall do so independent of any other governmental entity. Each agency shall be responsible for its own purchases and shall be liable only for services ordered, received and accepted. No agency receives any liability by virtue of this bid and subsequent contract award.

16. BID PREFERENCE

In accordance with the Minority Women Owned Business Enterprise (MWBE) Ordinance, award of a contract resulting from this Invitation for Bids may be made to the lowest responsive and responsible Orange County certified MWBE bidder provided that the bid does not exceed the overall lowest responsive and responsible bidder by the following percentages for the bid amounts listed:

- A. 8% - Bids Up To \$100,000**
- B. 7% - Bids Greater Than \$100,000 to \$500,000**
- C. 6% - Bids Greater Than \$500,000 to \$750,000**
- D. 5% - Bids Greater Than \$750,000 to \$2,000,000**
- E. 4% - Bids Greater Than \$2,000,000 to \$5,000,000**
- F. 3% - Bids Greater Than \$5,000,000**

In accordance with the Service Disabled Veteran Business Ordinance, award of a contract resulting from this Invitation for Bids may be made to the lowest responsive and responsible registered Service Disabled Veteran bidder provided that the bid does not exceed the overall lowest responsive and responsible bidder by the following percentages for the bid amounts listed:

- A. 8% - Bids Up To \$100,000**
- B. 7% - Bids Greater Than \$100,000 to \$500,000**
- C. 6% - Bids Greater Than \$500,000 to \$750,000**
- D. 5% - Bids Greater Than \$750,000 to \$2,000,000**
- E. 4% - Bids Greater Than \$2,000,000 to \$5,000,000**
- F. 3% - Bids Greater Than \$5,000,000**

In the event of a tie between an M/WBE and an SDV with all else being equal, the award shall be made to the firm with the lowest business net worth.

17. CHANGES - SERVICE CONTRACTS

The County may at any time by issuance of an executed change order make changes within the general scope of the contract in any of the following areas:

- A. Description of services to be performed.
- B. Time of Performance (i.e., hours of the day, days of the week, etc.).
- C. Place of performance of the services.

If additional work or other changes are required in the areas described above, a price proposal shall be required from the Contractor. Upon negotiation of the proposal, execution and receipt of the change order, the Contractor shall commence performance of the work as specified. The Contractor shall not commence the performance of additional work or other changes not covered by this contract without an executed change order issued by the Procurement Division. If the Contractor performs additional work beyond the specific requirements of this contract without an executed change order, it shall be at their own risk. The County assumes no responsibility for any additional costs for work not specifically authorized by an executed change order.

18. METHOD OF ORDERING

The County shall issue Delivery (Purchase) Orders against the contract on an as needed basis for the services listed on the Bid Response Form.

19. ATTACHMENTS

The following attachment(s) is/are attached to, and made a part of this Invitation for Bids:

- A. Attachment A1, 2, Lake Bass Catch Basin Inlet Sediment Filter Basket Map and Addresses
- B. Attachment B1, 2, Lake Anderson Catch Basin Inlet Sediment Filter Basket Map and Addresses
- C. Attachment C1, 2, Lake Cane Catch Basin Inlet Sediment Filter Basket Map and Addresses
- D. Attachment D1, 2, Lake Conway Catch Basin Inlet Sediment Filter Basket Map and Addresses
- E. Attachment E1, 2, Lake Floy Catch Basin Inlet Sediment Filter Basket Map and Addresses
- F. Attachment F1, 2, Lake Holden Catch Basin Inlet Sediment Filter Basket Map and Addresses
- G. Attachment G1, 2, Lake Jessamine Catch Basin Inlet Sediment Filter Basket Map and Addresses
- H. Attachment H1, 2, Lake Killarney Catch Basin Inlet Sediment Filter Basket Map and Addresses
- I. Attachment I1, 2, Lake LaGrange Catch Basin Inlet Sediment Filter Basket Map and Addresses

- J. Attachment J1, 2, Lake Lawne Catch Basin Inlet Sediment Filter Basket Map and Addresses
- K. Attachment K1, 2, Lake Martha-Burkett Catch Basin Inlet Sediment Filter Basket Map and Addresses
- L. Attachment L1, 2, Lake Odell Catch Basin Inlet Sediment Filter Basket Map and Addresses
- M. Attachment M1, 2, Lake Pineloch Catch Basin Inlet Sediment Filter Basket Map and Addresses
- N. Attachment N1, 2, Lake Sue Catch Basin Inlet Sediment Filter Basket Map and Addresses
- O. Attachment O1, 2, 3, Lakes Windermere, Tibet-Butler and Down Catch Basin Inlet Sediment Filter Basket Map and Addresses
- P. Attachment P1, 2, Lake Tyler Catch Basin Inlet Sediment Filter Basket Map and Addresses

20. CONDITIONS FOR EMERGENCY/HURRICANE OR DISASTER - TERM CONTRACTS

It is hereby made a part of this Invitation for Bids that before, during and after a public emergency, disaster, hurricane, flood, or other acts of God that Orange County shall require a “first priority” basis for services. It is vital and imperative that the majority of citizens are protected from any emergency situation which threatens public health and safety, as determined by the County. Contractor agrees to provide services to the County or other governmental entities as opposed to a private citizen, on a first priority basis. The County expects to pay contractual prices for all services required during an emergency situation. Contractor shall furnish a twenty-four (24) hour phone number in the event of such an emergency.

21. REFERENCES

A contact person shall be someone who has personal knowledge of the Bidder’s performance for the specific requirement listed. Contact person shall have been informed that they are being used as a reference and that the County may be calling them. More than one person can be listed but all shall have knowledge of the project. The reference shall be the owner or a representative of the owner. Contractors who provided services under the referenced project (contract) shall not be accepted as references. **DO NOT** list principals or officers who shall not be able to answer specific questions regarding the project. Failure of references listed to respond to the County’s inquiries may negatively impact the responsibility of the Bidder.

22. REQUIREMENTS CONTRACT

This is a Requirements Contract and the County’s intent is to order from the Contractor all of the services specified in the contract’s price schedule that are required to be purchased by the County. If the County urgently requires delivery of services before the earliest date that delivery may be required under this contract, and if the Contractor will not accept an order providing for accelerated delivery, the County may acquire the services from another source.

The County's requirements in this contract are estimated and there is no commitment by the County to order any specified amount. If the estimated quantities are not achieved, this shall not be the basis for an equitable adjustment.

If the Manager, Procurement Division determines that the Contractor's performance is less than satisfactory, the County may order the services from other sources until the deficient performance has been cured or the contract terminated.

SCOPE OF SERVICES

Background:

The Contractor shall clean out debris from catch basin insert sediment filter baskets.

The County currently has approximately 730 catch basin insert sediment filter baskets and anticipates installing an additional 150 units within the next year.

1. **The Contractor shall furnish all labor, materials, equipment, supervision, tools, transportation, supplies, manpower, pay disposal fees, and all related costs necessary to complete the specified services.**
2. The Contractor shall clean all units within a one week period on a scheduled regular monthly basis to be determined by the EPD project manager.
3. The Contractor shall be responsible for cleaning the debris, trash and sediment out of the inlet baskets. All units will have an iron cover. These covers may weigh in excess of 200 pounds. The baskets will be of varying weights due to size and the amount of debris the basket contains at the time of clean out. Inlet basket weight can be in excess of 250 pounds.
4. The Contractor shall use the Sediment Filter Basket Condition Report to record specific field data obtained during each clean out including:
 - a. A visual assessment of the composition of material (leaves, sediment, trash) and approximate percentages of each material type within each basket.
 - b. A visual assessment of the baskets fullness, recorded as a percent of total volume.
 - c. Weight of materials within each basket.
 - d. Any other comments or observations of interest (broken components, repair needs, missing baskets).
5. The Sediment Filter Basket Condition Report shall accompany the monthly invoice for the services provided. In addition, the completed Sediment Filter Basket Condition Report shall be e-mailed to the EPD Project Manager in Microsoft Excel format prior to a hard copy of the invoice being mailed.
6. The amount of debris shall be documented by either:
 - a. Weighing the basket with the debris in it, emptying the basket of the debris, cleaning the basket, re-weighing the clean basket and recording the difference between the full basket and the cleaned basket as the weight of the debris. Or,
 - b. The debris may be emptied into another container, the weight of which is known, and calculating the difference between the two weights.
7. A portable scale shall be used for weighing purposes and said scale shall weigh to the 1/10th of a pound.

8. The basket shall be emptied into a truck or trailer for transport to a Class 1 landfill for disposal. The debris shall pass the paint liquids filter test (EPA Method 9095B).
9. The empty basket shall be cleaned with a bristle brush to remove any stuck on debris.
10. Upon completion of the cleaning of the basket, the cleaned basket shall be replaced into the unit and the unit recovered.
11. At the time of completion, the Contractor shall contact the County's Project Manager and request an inspection of the completed work. Any detected deficiency shall be noted and the Contractor shall correct all deficiencies within five (5) calendar days. When the deficiencies are corrected, the Contractor shall again contact the County's Project Manager for a site inspection to insure that the deficiencies have been corrected.
12. The Contractor shall submit to the EPD Project Manager or designee, the coming monthly schedule of the clean out dates and locations no later than the 25th of the previous month. EPD will monitor the cleaning progress throughout the month.
13. The Contractor shall ensure the Maintenance of Traffic (M.O.T.) shall conform to F.D.O.T.'S most current editions of Roadway and Traffic Design Standards for Design, Construction, and Maintained Systems and the Federal Highway Administration (F.H.W.A.) Manual on Uniform Traffic Control Devices (M.U.T.C.D.) for Streets and Highways. These documents can be ordered from F.D.O.T, Maps and Publications Department, 605 Suwannee Street, Tallahassee, Florida, 32399-0450, Phone (904) 488-9220. All costs associated with M.O.T. shall be included with the Unit Price.

IF THE CONTRACTOR DOES NOT COMPLY WITH F.H.W.A.'S M.U.T.C.D. (I.E. SIGNS, QUALIFIED FLAGGERS AND/OR BARRICADES), THE COUNTY RESERVES THE RIGHT TO DIRECT THE CONTRACTOR TO CEASE OPERATION UNTIL DEFICIENCIES ARE CORRECTED. IN ADDITION, NO ROAD CLOSURES WILL BE ALLOWED EXCEPT IN THE CASE OF EMERGENCIES.

14. The Contractor shall comply with the most current edition of the F.D.O.T. Accident Prevention Procedures Manual pertaining to employee safety and applicable Occupational Safety and Health Administration (O.S.H.A) and Orange County Standards. The Contractor shall obtain copies of these publications by contacting the F.D.O.T. Maps and Publications Department in Tallahassee, O.S.H.A. Regional Office in Atlanta, GA, and Orange County Public Works in Orlando, respectively.
15. The Contractor shall provide a sufficient number of employees, employee safety equipment and traffic control equipment to implement the standards of the above specification number 12.

**BID RESPONSE FORM
IFB #Y15-139-JS**

The Contractor shall provide all labor and other resources necessary to provide the services in strict accordance with the scope of services defined in this solicitation for the amounts specified in this Bid Response Form, inclusive of overhead, profit and any other costs.

<u>DESCRIPTION</u>	<u>COST PER CLEANOUT EVENT</u>	<u>APROX. # OF UNITS</u>	<u>EST.ANNUAL CLEANOUT EVENTS</u>	<u>EXTENDED COST</u>
Basic Year (12 months from contract award date)				
Catch basin sediment filter basket, as specified	\$_____X	930 X	12 =	\$_____
Option Year 1 (12 months from 1st contract anniversary date)				
Catch basin sediment filter basket, as specified	\$_____X	1,130 X	12 =	\$_____
Option Year 2 (12 months from 2nd contract anniversary date)				
Catch basin sediment filter basket, as specified	\$_____X	1,330 X	12 =	\$_____
TOTAL PRICE (Basic Year, Option Years 1 & 2)				\$_____

Company Name

IMPORTANT NOTE: When completing your bid, do not attach any forms which may contain terms and conditions that conflict with those listed in the County's bid documents(s). Inclusion of additional terms and conditions such as those which may be on your company's standard forms shall result in your bid being declared non-responsive as these changes will be considered a counteroffer to the County's bid.

Performance shall be not later than ten (10) calendar days After Receipt of Order (ARO) per Special Terms and Conditions.

Inquiries regarding this Invitation for Bids may be directed to Jim Schell, Senior Purchasing Agent, at Jim.Schell@ocfl.net.

Bid Response Documents - The following documents constitute your bid:

- A. Bid Response Form, Authorized Signatories/Negotiators, Drug-Free Workplace, Schedule of Sub-contracting, Conflict/Non-Conflict of Interest Form, E-Verification Certification, and current W9, Relationship Disclosure Form and Orange County Specific Project Expenditure Report. **Please make sure forms are fully executed where required.**
- B. Qualifications of Bidders information, per Special Terms and Conditions.
- C. Completed attached reference documentation.

THE FOLLOWING SECTION MUST BE COMPLETED BY ALL BIDDERS:

Company Name: _____

NOTE: COMPANY NAME MUST MATCH LEGAL NAME ASSIGNED TO TIN NUMBER. CURRENT W9 MUST BE SUBMITTED WITH BID.

TIN#: _____ D-U-N-S® # _____

(Street No. or P.O. Box Number) (Street Name) (City)

(County) (State) (Zip Code)

Contact Person: _____

Phone Number: _____ Fax Number: _____

Email Address: _____

<u>EMERGENCY CONTACT</u>	
Emergency Contact Person: _____	
Telephone Number: _____	Cell Phone Number: _____
Residence Telephone Number: _____	Email: _____

ACKNOWLEDGEMENT OF ADDENDA

The Bidder shall acknowledge receipt of any addenda issued to this solicitation by completing the blocks below or by completion of the applicable information on the addendum and returning it not later than the date and time for receipt of the bid. Failure to acknowledge an addendum that has a material impact on this solicitation may negatively impact the responsiveness of your bid. Material impacts include but are not limited to changes to scope of work/services, delivery time, performance period, quantities, bonds, letters of credit, insurance, or qualifications.

Addendum No. _____, Date _____ Addendum No. _____, Date _____

Addendum No. _____, Date _____ Addendum No. _____, Date _____

AUTHORIZED SIGNATORIES/NEGOTIATORS

The Bidder represents that the following **principals** are authorized to sign bids, negotiate and/or sign contracts and related documents to which the bidder will be duly bound. Principal is defined as an employee, officer or other technical or professional in a position capable of substantially influencing the development or outcome of an activity required to perform the covered transaction.

Name	Title	Telephone Number/Email

(Signature)	(Date)
-------------	--------

(Title)

(Name of Business)

The Bidder shall complete and submit the following information with the bid:

Type of Organization

Sole Proprietorship
 Partnership
 Non-Profit
 Joint Venture
 Corporation

State of Incorporation: _____

Principal Place of Business (Florida Statute Chapter 607): _____
City/County/State

THE PRINCIPAL PLACE OF BUSINESS SHALL BE THE ADDRESS OF THE BIDDER'S PRINCIPAL OFFICE AS IDENTIFIED BY THE FLORIDA DIVISION OF CORPORATIONS.

Federal I.D. number is _____

REFERENCES

List three (3) customers during the past ten (10) years for which you provided services similar to those specified in the solicitation in the spaces provided below. Provide the owner's name, contact person, address, email address, telephone number, and date services were performed, as described.

1. Company Name: _____

Owner's Name: _____

Description of services provided: _____

Contract Amount: _____

Start and End Date of Contract: _____

Contact Person: _____

Address: _____

Telephone Number: _____

Email Address: _____

2. Company Name: _____

Owner's Name: _____

Description of services provided: _____

Contract Amount: _____

Start and End Date of Contract: _____

Contact Person: _____

Address: _____

Telephone Number: _____

Email Address: _____

3. Company Name: _____

Owner's Name: _____

Description of services provided: _____

Contract Amount: _____

Start and End Date of
Contract: _____

Contact Person: _____

Address: _____

Telephone Number: _____

Email Address: _____

DRUG-FREE WORKPLACE FORM

The undersigned Bidder, in accordance with Florida Statute 287.087 hereby certifies that _____ does:

Name of Business

1. Publish a statement notifying employees that the unlawful manufacture, distribution, dispensing, possession, or use of a controlled substance is prohibited in the workplace and specifying the actions that will be taken against employees for violations of such prohibition.
2. Inform employees about the dangers of drug abuse in the workplace, the business's policy of maintaining a drug-free workplace, any available drug counseling, rehabilitation, employee assistance programs and the penalties that may be imposed upon employees for drug abuse violations.
3. Give each employee engaged in providing the commodities or contractual services that are under bid a copy of the statement specified in Paragraph 1.
4. In the statement specified in Paragraph 1, notify the employees that, as a condition of working on the commodities or contractual services that are under bid, the employee will abide by the terms of the statement and will notify the employer of any conviction of, or plea of guilty or nolo contendere to, any violation of Florida Statute 893 or of any controlled substance law of the United States or any state, for a violation occurring in the workplace no later than five (5) days after such conviction.
5. Impose a sanction on, or require the satisfactory participation in a drug abuse assistance or rehabilitation program if such is available in the employee's community, by any employee who is so convicted.
6. Make a good faith effort to continue to maintain a drug-free workplace through implementation of Paragraphs 1 thru 5.

As the person authorized to sign this statement, I certify that this firm complies fully with above requirements.

Bidder's Signature

Date

SCHEDULE OF SUBCONTRACTING

IFB NO. Y15-139-JS

As specified in the General Terms and Conditions and the Bid Preference Clause in the Special Terms and Conditions, bidders are to present the details of subcontractor participation.

Name Of Subcontractor	Address	Type of Work to be Performed	Percent of Contract Amount to be Subcontracted

Company Name: _____

CONFLICT/NON-CONFLICT OF INTEREST STATEMENT

CHECK ONE

- [] To the best of our knowledge, the undersigned bidder has no potential conflict of interest due to any other clients, contracts, or property interest for this project.

OR

- [] The undersigned bidder, by attachment to this form, submits information which may be a potential conflict of interest due to other clients, contracts, or property interest for this project.

LITIGATION STATEMENT

CHECK ONE

- [] The undersigned bidder has had no litigation and/or judgments entered against it by any local, state or federal entity and has had no litigation and/or judgments entered against such entities during the past ten (10) years.
- [] The undersigned bidder, **BY ATTACHMENT TO THIS FORM**, submits a summary and disposition of individual cases of litigation and/or judgments entered by or against any local, state or federal entity, by any state or federal court, during the past ten (10) years.

COMPANY NAME

AUTHORIZED SIGNATURE

NAME (PRINT OR TYPE)

TITLE

Failure to check the appropriate blocks above may result in disqualification of your bid. Likewise, failure to provide documentation of a possible conflict of interest, or a summary of past litigation and/or judgments, may result in disqualification of your bid.

E VERIFICATION CERTIFICATION

Contract No.Y15-139-JS

I hereby certify that I will utilize the U.S. Department of Homeland Security's E-Verify system in accordance with the terms governing the use of the system to confirm the employment eligibility of the individuals classified below. In accordance with s. 837.06, Florida Statutes, I understand and acknowledge that whoever knowingly makes a false statement in writing with the intent to mislead a public servant in the performance of his or her official duties shall be guilty of a misdemeanor in the second degree, punishable as provided in s. 775.082 or s. 775.083, Florida statutes.

All persons, including subcontractors and their workforce, who will perform work under **Contract No.Y15-139-JS, CLEANING OF CATCH BASIN SEDIMENT FILTER BASKETS**, within the state of Florida.

NAME OF CONTRACTOR: _____

ADDRESS OF CONTRACTOR: _____

AUTHORIZED SIGNATURE: _____

TITLE: _____

DATE: _____

**RELATIONSHIP DISCLOSURE FORM
FOR USE WITH PROCUREMENT ITEMS, EXCEPT THOSE WHERE THE COUNTY
IS THE PRINCIPAL OR PRIMARY PROPOSER**

For procurement items that will come before the Board of County Commissioners for final approval, this form shall be completed by the Bidder and shall be submitted to the Procurement Division by the Bidder.

In the event any information provided on this form should change, the Bidder must file an amended form on or before the date the item is considered by the appropriate board or body.

Part I

INFORMATION ON BIDDER:

Legal Name of Bidder:

Business Address (Street/P.O. Box, City and Zip Code):

Business Phone: () _____

Facsimile: () _____

**INFORMATION ON BIDDER'S AUTHORIZED AGENT, IF APPLICABLE:
(Agent Authorization Form also required to be attached)**

Name of Bidder's Authorized Agent:

Business Address (Street/P.O. Box, City and Zip Code):

Business Phone: () _____

Facsimile: () _____

Part II

IS THE BIDDER A RELATIVE OF THE MAYOR OR ANY MEMBER OF THE BCC?

___ **YES** ___ **NO**

IS THE MAYOR OR ANY MEMBER OF THE BCC THE BIDDER'S EMPLOYEE?

___ **YES** ___ **NO**

IS THE BIDDER OR ANY PERSON WITH A DIRECT BENEFICIAL INTEREST IN THE OUTCOME OF THIS MATTER A BUSINESS ASSOCIATE OF THE MAYOR OR ANY MEMBER OF THE BCC?

___ **YES** ___ **NO**

If you responded "YES" to any of the above questions, please state with whom and explain the relationship.

(Use additional sheets of paper if necessary)

Part III

ORIGINAL SIGNATURE AND NOTARIZATION REQUIRED

I hereby certify that information provided in this relationship disclosure form is true and correct based on my knowledge and belief. If any of this information changes, I further acknowledge and agree to amend this relationship disclosure form prior to any meeting at which the above-referenced project is scheduled to be heard. In accordance with s. 837.06, Florida Statutes, I understand and acknowledge that whoever knowingly makes a false statement in writing with the intent to mislead a public servant in the performance of his or her official duty shall be guilty of a misdemeanor in the second degree, punishable as provided in s. 775.082 or s. 775.083, Florida Statutes.

Signature of Bidder

Date

Printed Name and Title of Person completing this form:

STATE OF _____ :
COUNTY OF _____ :

I certify that the foregoing instrument was acknowledged before me this _____ day of _____, 20__ by _____. He/she is personally known to me or has produced _____ as identification and did/did not take an oath.

Witness my hand and official seal in the county and state stated above on the _____ day of _____, in the year _____.

(Notary Seal)

Signature of Notary Public
Notary Public for the State of _____
My Commission Expires: _____

Staff signature and date of receipt of form

Staff reviews as to form and does not attest to the accuracy or veracity of the information provided herein.

FREQUENTLY ASKED QUESTIONS (FAQ)
ABOUT THE
RELATIONSHIP DISCLOSURE FORM
Updated 6-28-11

WHAT IS THE RELATIONSHIP DISCLOSURE FORM?

The Relationship Disclosure Form (form OC CE 2D and form OC CE 2P) is a form created pursuant to the County's Local Code of Ethics, codified at Article XIII of Chapter 2 of the Orange County Code, to ensure that all development-related items and procurement items presented to or filed with the County include information as to the relationship, if any, between the applicant and the County Mayor or any member of the Board of County Commissioners (BCC). The form will be a part of the backup information for the applicant's item.

WHY ARE THERE TWO RELATIONSHIP DISCLOSURE FORMS?

Form OC CE 2D is used only for development-related items, and form OC CE 2P is used only for procurement-related items. The applicant needs to complete and file the form that is applicable to his/her case.

WHO NEEDS TO FILE THE RELATIONSHIP DISCLOSURE FORM?

Form OC CE 2D should be completed and filed by the owner of record, contract purchaser, or authorized agent. Form OC CE 2P should be completed and filed by the bidder, offeror, quoter, or respondent, and, if applicable, their authorized agent. In all cases, the person completing the form must sign the form and warrant that the information provided on the form is true and correct.

WHAT INFORMATION NEEDS TO BE DISCLOSED ON THE RELATIONSHIP DISCLOSURE FORM?

The relationship disclosure form needs to disclose pertinent background information about the applicant and the relationship, if any, between, on the one hand, the applicant and, if applicable, any person involved with the item, and on the other hand, the Mayor or any member of the BCC.

In particular, the applicant needs to disclose whether any of the following relationships exist: (1) the applicant is a business associate of the Mayor or any member of the BCC; (2) any person involved with the approval of the item has a beneficial interest in the outcome of the matter *and* is a business associate of the Mayor or any member of the BCC; (3) the applicant is a relative of the Mayor or any member of the BCC; or (4) the Mayor or any member of the BCC is an employee of the applicant. (See Section 2-454, Orange County Code.)

HOW ARE THE KEY RELEVANT TERMS DEFINED?

Applicant means, for purposes of a development-related project, the owner, and, if applicable, the contract purchaser or owner's authorized agent. Applicant means, for purposes of a procurement item, the bidder, offeror, quoter, respondent, and, if applicable, the authorized agent of the bidder, offeror, quoter, or respondent.

Business associate means any person or entity engaged in or carrying on a business enterprise with a public officer, public employee, or candidate as a partner, joint venture, corporate shareholder where the shares of such corporation are not listed on any national or regional stock exchange, or co-owner of property. In addition, the term

includes any person or entity engaged in or carrying on a business enterprise, or otherwise engaging in common investment, with a public officer, public employee, or candidate as a partner, member, shareholder, owner, co-owner, joint venture partner, or other investor, whether directly or indirectly, whether through a Business Entity or through interlocking Parent Entities, Subsidiary Entities, or other business or investment scheme, structure, or venture of any nature. (See Section 112.312(4), Florida Statutes, and Section 2-452(b), Orange County Code.)

Employee means any person who receives remuneration from an employer for the performance of any work or service while engaged in any employment under any appointment or contract for hire or apprenticeship, express or implied, oral or written, whether lawfully or unlawfully employed, and includes, but is not limited to, aliens and minors. (See Section 440.02(15), Florida Statutes.)

Relative means an individual who is related to a public officer or employee as father, mother, son, daughter, brother, sister, uncle, aunt, first cousin, nephew, niece, husband, wife, father-in-law, mother-in-law, son-in-law, daughter-in-law, brother-in-law, sister-in-law, stepfather, stepmother, stepson, stepdaughter, stepbrother, stepsister, half brother, half sister, grandparent, great grandparent, grandchild, great grandchild, step grandparent, step great grandparent, step grandchild, step great grandchild, person who is engaged to be married to the public officer or employee or who otherwise holds himself or herself out as or is generally known as the person whom the public officer or employee intends to marry or with whom the public officer or employee intends to form a household, or any other natural person having the same legal residence as the public officer or employee. (See Section 112.312(21), Florida Statutes.)

DOES THE RELATIONSHIP DISCLOSURE FORM NEED TO BE UPDATED IF INFORMATION CHANGES?

Yes. It remains a continuing obligation of the applicant to update this form whenever any of the information provided on the initial form changes.

WHERE DO THE RELATIONSHIP DISCLOSURE FORM AND ANY SUBSEQUENT UPDATES NEED TO BE FILED?

For a development-related item, the Relationship Disclosure Form and any update need to be filed with the County Department or County Division where the applicant filed the application. For a procurement item, the Relationship Disclosure Form and any update need to be filed with the Procurement Division.

WHEN DO THE RELATIONSHIP DISCLOSURE FORM AND ANY UPDATES NEED TO BE FILED?

In most cases, the initial form needs to be filed when the applicant files the initial development-related project application or initial procurement-related forms. However, with respect to a procurement item, a response to a bid will not be deemed unresponsive if this form is not included in the initial packet submitted to the Procurement Division.

If changes are made after the initial filing, the final, cumulative Relationship Disclosure Form needs to be filed with the appropriate County Department or County Division processing the application not less than seven (7) days prior to the scheduled BCC agenda date so that it may be incorporated into the BCC agenda packet. When the matter is a discussion agenda item or is the subject of a public hearing, and an update has not been made at least 7 days prior to BCC meeting date or is not included in the

BCC agenda packet, the applicant is obligated to verbally present such update to the BCC when the agenda item is heard or the public hearing is held. When the matter is a consent agenda item and an update has not been made at least 7 days prior to the BCC meeting or the update is not included in the BCC agenda packet, the item will be pulled from the consent agenda to be considered at a future meeting.

WHO WILL REVIEW THE INFORMATION DISCLOSED ON THE RELATIONSHIP DISCLOSURE FORM AND ANY UPDATES?

The information disclosed on this form and any updates will be a public record as defined by Chapter 119, Florida Statutes, and may therefore be inspected by any interested person. Also, the information will be made available to the Mayor and the BCC members. This form and any updates will accompany the information for the applicant's project or item.

However, for development-related items, if an applicant discloses the existence of one or more of the relationships described above and the matter would normally receive final consideration by the Concurrency Review Committee or the Development Review Committee, the matter will be directed to the BCC for final consideration and action following committee review.

CONCLUSION:

We hope you find this FAQ useful to your understanding of the Relationship Disclosure Form. Please be informed that if the event of a conflict or inconsistency between this FAQ and the requirements of the applicable ordinance or law governing relationship disclosures, the ordinance or law controls.

Also, please be informed that the County Attorney's Office is not permitted to render legal advice to an applicant or any other outside party. Accordingly, if the applicant or an outside party has any questions after reading this FAQ, he/she is encouraged to contact his/her own legal counsel.

ORANGE COUNTY SPECIFIC PROJECT EXPENDITURE REPORT

This lobbying expenditure form shall be completed in full and filed with all application submittals. This form shall remain cumulative and shall be filed with the department processing your application. Forms signed by a principal's authorized agent shall include an executed Agent Authorization Form.

This is the initial Form: _____
This is a Subsequent Form: _____

Part I

Please complete all of the following:

Name and Address of Principal (legal name of entity or owner per Orange County tax rolls): _____

Name and Address of Principal's Authorized Agent, if applicable: _____

List the name and address of all lobbyists, Contractors, contractors, subcontractors, individuals or business entities who will assist with obtaining approval for this project. (Additional forms may be used as necessary.)

1. Name and address of individual or business entity: _____
Are they registered Lobbyist? Yes ___ or No ___
2. Name and address of individual or business entity: _____
Are they registered Lobbyist? Yes ___ or No ___
3. Name and address of individual or business entity: _____
Are they registered Lobbyist? Yes ___ or No ___
4. Name and address of individual or business entity: _____
Are they registered Lobbyist? Yes ___ or No ___
5. Name and address of individual or business entity: _____
Are they registered Lobbyist? Yes ___ or No ___
6. Name and address of individual or business entity: _____
Are they registered Lobbyist? Yes ___ or No ___
7. Name and address of individual or business entity: _____
Are they registered Lobbyist? Yes ___ or No ___
8. Name and address of individual or business entity: _____
Are they registered Lobbyist? Yes ___ or No ___

Part II

Expenditures:

For this report, an "expenditure" means money or anything of value given by the principal and/or his/her lobbyist for the purpose of lobbying, as defined in section 2-351, Orange County Code. This may include public relations expenditures including, but not limited to, petitions, fliers, purchase of media time, cost of print and distribution of publications. However, the term "expenditure" **does not** include:

- Contributions or expenditures reported pursuant to chapter 106, Florida Statutes;
- Federal election law, campaign-related personal services provided without compensation by individuals volunteering their time;
- Any other contribution or expenditure made by or to a political party;
- Any other contribution or expenditure made by an organization that is exempt from taxation under 26 U.S.C. s. 527 or s. 501(c)(4), in accordance with s.112.3215, Florida Statutes; and/or
- Professional fees paid to registered lobbyists associated with the project or item.

The following is a complete list of all lobbying expenditures and activities (including those of lobbyists, contractors, Contractors, etc.) incurred by the principal or his/her authorized agent and expended in connection with the above-referenced project or issue. **You need not include de minimus costs (under \$50) for producing or reproducing graphics, aerial photographs, photocopies, surveys, studies or other documents related to this project.**

Date of Expenditure	Name of Party Incurring Expenditure	Description of Activity	Amount Paid
		TOTAL EXPENDED THIS REPORT	\$

FREQUENTLY ASKED QUESTIONS (FAQ)
ABOUT THE
SPECIFIC PROJECT EXPENDITURE REPORT
Updated 3-1-11

WHAT IS A SPECIFIC PROJECT EXPENDITURE REPORT (SPR)?

A Specific Project Expenditure Report (SPR) is a report required under Section 2-354(b) of the Orange County Lobbying Ordinance, codified at Article X of Chapter 2 of the Orange County Code, reflecting all lobbying expenditures incurred by a principal and their authorized agent(s) and the principal's lobbyist(s), contractor(s), subcontractor(s), and Contractor(s), if applicable, for certain projects or issues that will ultimately be decided by the Board of County Commissioners (BCC).

Matters specifically exempt from the SPR requirement are ministerial items, resolutions, agreements in settlement of litigation matters in which the County is a party, ordinances initiated by County staff, and some procurement items, as more fully described in 2.20 of the Administrative Regulations.

Professional fees paid by the principal to his/her lobbyist for the purpose of lobbying need not be disclosed on this form. (See Section 2-354(b), Orange County Code.)

WHO NEEDS TO FILE THE SPR?

The principal or his/her authorized agent needs to complete and sign the SPR and warrant that the information provided on the SPR is true and correct.

A principal that is a governmental entity does not need to file an SPR.

HOW ARE THE KEY RELEVANT TERMS DEFINED?

Expenditure means "a payment, distribution, loan, advance, reimbursement, deposit, or anything of value made by a lobbyist or principal for the purpose of lobbying. This may include public relations expenditures (including but not limited to petitions, flyers, purchase of media time, cost of print and distribution of publications) but does not include contributions or expenditures reported pursuant to Chapter 106, Florida Statutes, or federal election law, campaign-related personal services provided without compensation by individuals volunteering their time, any other contribution or expenditure made by or to a political party, or any other contribution or expenditure made by an organization that is exempt from taxation under 26 U.S.C. s. 527 or s. 501(c)(4)." (See Section 112.3215, Florida Statutes.) Professional fees paid by the principal to his/her lobbyist for the purpose of lobbying are not deemed to be "expenditures." (See Section 2-354, Orange County Code.)

Lobbying means seeking "to encourage the approval, disapproval, adoption, repeal, rescission, passage, defeat or modification of any ordinance, resolution, agreement, development permit, other type of permit, franchise, vendor, Contractor, contractor, recommendation, decision or other foreseeable action of the [BCC]," and "include[s] all communications, regardless of whether initiated by the lobbyist or by the person being lobbied, and regardless of whether oral, written or electronic." (See Section 2-351, Orange County Code.) Furthermore, *lobbying* means communicating "directly with the County Mayor, with any other member of the [BCC], or with any member of a procurement committee." (See Section 2-351, Orange County Code.) *Lobbying* also

means communicating “indirectly with the County Mayor or any other member of the [BCC]” by communicating with any staff member of the Mayor or any member of the BCC, the county administrator, any deputy or assistant county administrator, the county attorney, any county department director, or any county division manager. (See Section 2-351, Orange County Code.) *Lobbying* does not include the act of appearing before a Sunshine Committee, such as the Development Review Committee or the Roadway Agreement Committee other than the BCC.

Principal means “the person, partnership, joint venture, trust, association, corporation, governmental entity or other entity which has contracted for, employed, retained, or otherwise engaged the services of a lobbyist.” *Principal* may also include a person, partnership, joint venture, trust, association, corporation, limited liability corporation, or other entity where it or its employees do not qualify as a lobbyist under the definition set forth in Section 2-351 of the Orange County Code but do perform lobbying activities on behalf of a business in which it has a personal interest.

DOES THE SPR NEED TO BE UPDATED IF INFORMATION CHANGES?

Yes. It remains a continuing obligation of the principal or his/her authorized agent to update the SPR whenever any of the information provided on the initial form changes.

WHERE DO THE SPR AND ANY UPDATES NEED TO BE FILED?

The SPR needs to be filed with the County Department or County Division processing the application or matter. If and when an additional expenditure is incurred subsequent to the initial filing of the SPR, an amended SPR needs to be filed with the County Department or County Division where the original application, including the initial SPR, was filed.

WHEN DO THE SPR AND ANY UPDATES NEED TO BE FILED?

In most cases, the initial SPR needs to be filed with the other application forms. The SPR and any update must be filed with the appropriate County Department or County Division not less than seven (7) days prior to the BCC hearing date so that they may be incorporated into the BCC agenda packet. (See Section 2-354(b), Orange County Code.) When the matter is a discussion agenda item or is the subject of a public hearing, and any additional expenditure occurs less than 7 days prior to BCC meeting date or updated information is not included in the BCC agenda packet, the principal or his/her authorized agent is obligated to verbally present the updated information to the BCC when the agenda item is heard or the public hearing is held. When the matter is a consent agenda item and an update has not been made at least 7 days prior to the BCC meeting or the update is not included in the BCC agenda packet, the item will be pulled from the consent agenda to be considered at a future meeting.

WHO WILL BE MADE AWARE OF THE INFORMATION DISCLOSED ON THE SPR AND ANY UPDATES?

The information disclosed on the SPR and any updates will be a public record as defined by Chapter 119, Florida Statutes, and therefore may be inspected by any interested person. Also, the information will be made available to the Mayor and the BCC members. This information will accompany the other information for the principal's project or item.

CONCLUSION:

We hope you find this FAQ useful to your understanding of the SPR. Please be informed that in the event of a conflict or inconsistency between this FAQ and the requirements of the applicable ordinance governing specific project expenditure reports, the ordinance controls.

Also, please be informed that the County Attorney's Office is not permitted to render legal advice to a principal, his/her authorized agent, or any other outside party. Accordingly, if after reading this FAQ the principal, his/her authorized agent or an outside party has any questions, he/she is encouraged to contact his/her own legal counsel.

AGENT AUTHORIZATION FORM

I/We, (Print Bidder name) _____, Do hereby authorize (print agent's name), _____, to act as my/our agent to execute any petitions or other documents necessary to affect the CONTRACT approval PROCESS more specifically described as follows, (IFB NUMBER AND TITLE)_____, and to appear on my/our behalf before any administrative or legislative body in the county considering this CONTRACT and to act in all respects as our agent in matters pertaining TO THIS CONTRACT.

Signature of Bidder

Date

STATE OF _____ :
COUNTY OF _____ :

I certify that the foregoing instrument was acknowledged before me this _____ day of _____, 20__ by _____. He/she is personally known to me or has produced _____ as identification and did/did not take an oath.

Witness my hand and official seal in the county and state stated above on the _____ day of _____, in the year _____.

(Notary Seal)

Signature of Notary Public
Notary Public for the State
of _____
My Commission
Expires: _____

EXHIBIT A

LEASED EMPLOYEE AFFIDAVIT

I affirm that an employee leasing company provides my workers' compensation coverage. I further understand that my contract with the employee leasing company limits my workers' compensation coverage to enrolled worksite employees only. My leasing arrangement does not cover un-enrolled worksite employees, independent contractors, uninsured sub-contractors or casual labor exposure.

I hereby certify that 100% of my workers are covered as worksite employees with the employee leasing company. I certify that I do not hire any casual or uninsured labor outside the employee leasing arrangement. I agree to notify the County in the event that I have any workers not covered by the employee leasing workers' compensation policy. In the event that I have any workers not subject to the employee leasing arrangement, I agree to obtain a separate workers' compensation policy to cover these workers. I further agree to provide the County with a certificate of insurance providing proof of workers' compensation coverage prior to these workers entering any County jobsite.

I further agree to notify the County if my employee leasing arrangement terminates with the employee leasing company and I understand that I am required to furnish proof of replacement workers' compensation coverage prior to the termination of the employee leasing arrangement.

I certify that I have workers' compensation coverage for all of my workers through the employee leasing arrangement specified below:

Name of Employee Leasing Company: _____

Workers' Compensation Carrier: _____

A.M. Best Rating of Carrier: _____

Inception Date of Leasing Arrangement: _____

I further agree to notify the County in the event that I switch employee-leasing companies. I recognize that I have an obligation to supply an updated workers' compensation certificate to the County that documents the change of carrier.

Name of Contractor: _____

Signature of Owner/Officer: _____

Title: _____ Date: _____



CERTIFICATE OF LIABILITY INSURANCE

DATE (MM/DD/YYYY)

THIS CERTIFICATE IS ISSUED AS A MATTER OF INFORMATION ONLY AND CONFERS NO RIGHTS UPON THE CERTIFICATE HOLDER. THIS CERTIFICATE DOES NOT AFFIRMATIVELY OR NEGATIVELY AMEND, EXTEND OR ALTER THE COVERAGE AFFORDED BY THE POLICIES BELOW. THIS CERTIFICATE OF INSURANCE DOES NOT CONSTITUTE A CONTRACT BETWEEN THE ISSUING INSURER(S), AUTHORIZED REPRESENTATIVE OR PRODUCER, AND THE CERTIFICATE HOLDER.

IMPORTANT: If the certificate holder is an **ADDITIONAL INSURED**, the policy(ies) must be endorsed. If **SUBROGATION IS WAIVED**, subject to the terms and conditions of the policy, certain policies may require an endorsement. A statement on this certificate does not confer rights to the certificate holder in lieu of such endorsement(s).

PRODUCER	1. Name of Agent or Broker Street Address City, State, Zip	CONTACT NAME:	
		PHONE (A/C, No, Ext):	FAX (A/C, No):
INSURED	2. Name of Insured Street Address City, State, Zip	E-MAIL ADDRESS:	
		INSURER(S) AFFORDING COVERAGE	
		INSURER A :	
		INSURER B :	
		INSURER C : 3.	
		INSURER D :	
INSURER E :			
INSURER F :		NAIC #	

COVERAGES **CERTIFICATE NUMBER:** **REVISION NUMBER:**

THIS IS TO CERTIFY THAT THE POLICIES OF INSURANCE LISTED BELOW HAVE BEEN ISSUED TO THE INSURED NAMED ABOVE FOR THE POLICY PERIOD INDICATED. NOTWITHSTANDING ANY REQUIREMENT, TERM OR CONDITION OF ANY CONTRACT OR OTHER DOCUMENT WITH RESPECT TO WHICH THIS CERTIFICATE MAY BE ISSUED OR MAY PERTAIN, THE INSURANCE AFFORDED BY THE POLICIES DESCRIBED HEREIN IS SUBJECT TO ALL THE TERMS, EXCLUSIONS AND CONDITIONS OF SUCH POLICIES. LIMITS SHOWN MAY HAVE BEEN REDUCED BY PAID CLAIMS.

NON LTR	TYPE OF INSURANCE	ATOL INSR	SUBT WVD	POLICY NUMBER	POLICY EXP (MM/DD/YYYY)	POLICY EXP (MM/DD/YYYY)	8. LIMITS
3.	GENERAL LIABILITY <input type="checkbox"/> COMMERCIAL GENERAL LIABILITY <input type="checkbox"/> CLAIMS-MADE <input type="checkbox"/> OCCUR (GENL AGGREGATE LIMIT APPLIES PER: <input type="checkbox"/> POLICY <input type="checkbox"/> PRO-JECT <input type="checkbox"/> LOC	4.	5.	6.	7.		EACH OCCURRENCE \$ DAMAGE TO RENTED PREMISES (Ea occurrence) \$ MED EXP (Any one person) \$ PERSONAL & ADV INJURY \$ GENERAL AGGREGATE \$ PRODUCTS - COMP/OP AGG \$ \$
	AUTOMOBILE LIABILITY ANY AUTO <input type="checkbox"/> ALL OWNED AUTOS <input type="checkbox"/> HIRED AUTOS 9. SCHEDULED AUTOS <input type="checkbox"/> NON-OWNED AUTOS						COMBINED SINGLE LIMIT (Ea accident) \$ BODILY INJURY (Per person) \$ BODILY INJURY (Per accident) \$ PROPERTY DAMAGE (Per accident) \$ \$
	UMBRELLA LIAB <input type="checkbox"/> EXCESS LIAB <input type="checkbox"/> OCCUR <input type="checkbox"/> CLAIMS-MADE DED RETENTION \$						EACH OCCURRENCE \$ AGGREGATE \$ \$
	WORKERS COMPENSATION AND EMPLOYERS' LIABILITY 10. Y/N <input type="checkbox"/> ANY PROPRIETOR/PARTNER/EXECUTIVE OFFICER/MEMBER EXCLUDED? (Mandatory in NH) If yes, describe under DESCRIPTION OF OPERATIONS below		N/A				<input type="checkbox"/> WC STATU-TORY LIMITS <input type="checkbox"/> OTH-ER E.L. EACH ACCIDENT \$ E.L. DISEASE - EA EMPLOYEE \$ E.L. DISEASE - POLICY LIMIT \$
11.							

DESCRIPTION OF OPERATIONS / LOCATIONS / VEHICLES (Attach ACORD 101, Additional Remarks Schedule, if more space is required)

Orange County Government is additionally insured on the General Liability Policy. A waiver of subrogation applies in favor of Orange County Government, it's agents, employees, and officials on the Worker's Compensation Policy.

CERTIFICATE HOLDER	CANCELLATION
13. Orange County Board of County Commissioners Procurement Division 400 E. South Street Orlando, Florida 32801	SHOULD ANY OF THE ABOVE DESCRIBED POLICIES BE CANCELLED BEFORE THE EXPIRATION DATE THEREOF, NOTICE WILL BE DELIVERED IN ACCORDANCE WITH THE POLICY PROVISIONS. AUTHORIZED REPRESENTATIVE 14.

ORANGE COUNTY CERTIFICATE OF INSURANCE REVIEW GUIDE

1. **PRODUCER:** Agent's name and address must be shown along with contact name phone, fax, and email address.
2. **INSURED:** Legal name and address of the entity entering into the contract or agreement
3. **INSURERS AFFORDING COVERAGE & NAIC #:** Name of the insurance company that is insuring the line of coverage. The INSURER and applicable letter will be used throughout the certificate to indicate the lines of coverage placed with a particular insurance company. A letter must be shown in the INSUR L TR section for each coverage line listed on the certificate.
4. **ADDL INSR:** Signifies whether coverage includes additional insured status. Very few agents use this section. Additional insured status is usually discussed in the Description of Operations/Locations/Vehicles section.
5. **SUBR WVD:** Signifies that a waiver of subrogation is in valid for each line of coverage as indicated.
6. **POLICY NUMBER:** A policy number should be listed for each line of coverage for which commercial insurance is being provided.
7. **POLICY EFFECTIVE/EXPIRATION DATES:** Effective and expiration dates should fall within the time frame of the inception of the contract or agreement.
8. **LIMITS:** As required in the written agreement. The general aggregate should be at least twice the per occurrence limit for all continuing service contracts. If the aggregate limit applies separately then the PROJECT box should be marked.
9. **AUTOMOBILE LIABILITY:** The ANY AUTO box is preferable however; some organizations do not own vehicles so the other boxes may be marked.
10. **WORKERS' COMPENSATION:** Look closely to see if any proprietor, partner, or executive officer is excluded. If so, please contact Risk Management for waiver approval. The WC STATUTORY LIMITS box must be selected.
11. **OTHER:** This section is used for other coverage such as professional liability and employee dishonesty. The same rules apply with regards to policy numbers, effective and expiration dates and limits.
12. **DESCRIPTION OF OPERATIONS/LOCATIONS/VEHICLES:** This section typically contains any special or qualifying language such as additional insured status or waivers of subrogation. If additional space is needed an ACORD 101 should be attached. Please note that these certificates are for information only and do not confer any rights upon the certificate holder. This is why we also ask for the specific policy language or endorsement specifying that these provisions are in place.
13. **CERTIFICATE HOLDER:** Orange County Board of County Commissioners should be listed as the certificate holder. Individual departments and divisions should not be listed as the primary certificate holder.
14. **AUTHORIZED REPRESENTATIVE:** This section should contain the signature of the person authorized to issue the certificate on behalf of the insurance company.

EXHIBIT B

COMMERCIAL GENERAL LIABILITY
CG 20 26 07 04

THIS ENDORSEMENT CHANGES THE POLICY. PLEASE READ IT CAREFULLY

**ADDITIONAL INSURED – DESIGNATED
PERSON OR ORGANIZATION**

This endorsement modifies Insurance provided under the following:

COMMERCIAL GENERAL LIABILITY COVERAGE PART

SCHEDULE

Name Of Additional Insured Person(s) Or Organization(s)
<i>The following are additional insured under the Professional Liability section of this policy (already included under the GL by form #86571).</i>
YOUR MEDICAL DIRECTORS AND ADMINISTRATORS, INCLUDING PROFESSIONAL PERSONS, BUT ONLY WHILE ACTING WITHIN THE SCOPE OF THEIR DUTIES FOR THE NAMED INSURED AS MEDICAL DIRECTORS AND ADMINISTRATORS;
AN INDEPENDENT CONTRACTOR IS AN INSURED ONLY FOR THE CONDUCT OF YOUR BUSINESS AND SOLELY WHILE PERFORMING SERVICES FOR A CLIENT OF THE NAMED INSURED, BUT SOLELY WITHIN THE SCOPE OF SERVICES CONTEMPLATED BY THE NAMED INSURED;
STUDENTS IN TRAINING WHILE PREFORMING DUTIES AS INSTRUCTED BY THE NAMED INSURED;
ANY ENTITY YOU ARE REQUIRED IN A WRITTEN CONTRACT (HEREINAFTER CALLED ADDITIONAL INSURED) TO NAME AS AN INSURED IS AN INSURED BUT ONLY WITH RESPECT TO LIABILITY ARISING OUT OF YOUR PREMISES OR OPERATIONS:
Information required to complete this Schedule, if not shown above, will be shown in the Declarations.

Section II – Who Is An Insured is amended to include as an additional insured the person(s) or organization(s) shown in the Schedule, but only with respect to liability for “bodily Injury”, “property damage” or “personal and advertising injury” caused, in whole or in part, by your acts or omissions or the acts or omissions of those acting on your behalf:

- A. In the performance of you ongoing operations; or
- B. In connection with your premises owned by or rented to you.

EXHIBIT C

POLICY NUMBER: _____ COMMERCIAL GENERAL LIABILITY
THIS ENDORSEMENT CHANGES THE POLICY. PLEASE READ IT CAREFULLY

**ADDITIONAL INSURED – DESIGNATED
PERSON OR ORGANIZATION**

This endorsement modifies Insurance provided under the following:

COMMERCIAL GENERAL LIABILITY COVERAGE PART
SCHEDULE

Name Of Additional Insured Person(s) Or Organization(s)
ORANGE COUNTY BOARD OF COUNTY COMMISSIONERS ATTN: PROCUREMENT DIVISION 400 E. SOUTH STREET, 2 nd FLOOR ORLANDO, FL 32801
Information required to complete this Schedule, if not shown above, will be shown in the Declarations.

Section II – Who Is An Insured is amended to include as an additional insured the person(s) or organization(s) shown in the Schedule, but only with respect to liability for “bodily Injury”, “property damage” or “personal and advertising injury” caused, in whole or in part, by your acts or omissions or the acts or omissions of those acting on your behalf:

- A. In the performance of you ongoing operations; or
- B. In connection with your premises owned by or rented to you.

EXHIBIT D

WORKERS COMPENSTION AND EMPLOYEES LIABILITY
INSURANCE POLICY WC 00 03 13

2ND Reprint

Effective April 1, 1984

Advisory

WAIVER OF OUR RIGHT TO RECOVER FROM OTHERS ENDORSEMENT

We have the right to recover our payments from anyone liable for an injury covered by this policy. We will not enforce our right against the person or organization named in the Schedule. (This agreement applies only to the extent that you perform work under a written contract that requires you to obtain this agreement from us.)

This agreement shall not operate directly or indirectly to benefit anyone not named in the Schedule.

Schedule

Name of Person or Organization:

ORANGE COUNTY BOARD OF COUNTY COMMISSIONERS
ATTN: PROCUREMENT DIVISION
400 E. SOUTH STREET, 2ND FLOOR
ORLANDO, FL 32801

© 1983 National Council on Compensation Insurance, Inc.

©NCCI Holdings, Inc.

EXHIBIT E

POLICY NUMBER:

**COMMERCIAL GENERAL LIABILITY
CG 24 04 10 93**

THIS ENDORSEMENT CHANGES THE POLICY. PLEASE READ IT CAREFULLY

WAIVER OF TRANSFER OF RIGHTS OF RECOVERY AGAINST OTHERS TO US

This endorsement modifies Insurance provided under the following:

COMMERCIAL GENERAL LIABILITY COVERAGE PART

SCHEDULE

Name of Person or Organization:

ORANGE COUNTY BOARD OF COUNTY COMMISSIONERS
ATTN: PROCUREMENT DIVISION
400 E. SOUTH STREET, 2nd FLOOR
ORLANDO, FL 32801

(If no entry appears above, information required to complete this endorsement will be shown in the Declarations as applicable to this endorsement.)

The TRANSFER OF RIGHTS OF RECOVERY AGAINST OTHERS TO US Condition (Section IV – COMMERCIAL GENERAL LIABILITY CONDITIONS) is amended by the addition of the following:

We waive any right to recovery we may have against the person or organization shown in the Schedule above because of payments we make for injury or damage arising out of your ongoing operations or “your work” done under a contract with that person or organization and included in the “Products-completed operations hazard”. This waiver applies only to the person or organization shown in the Schedule above.

Bass Lake CIB Basket Locations

Attachment A1

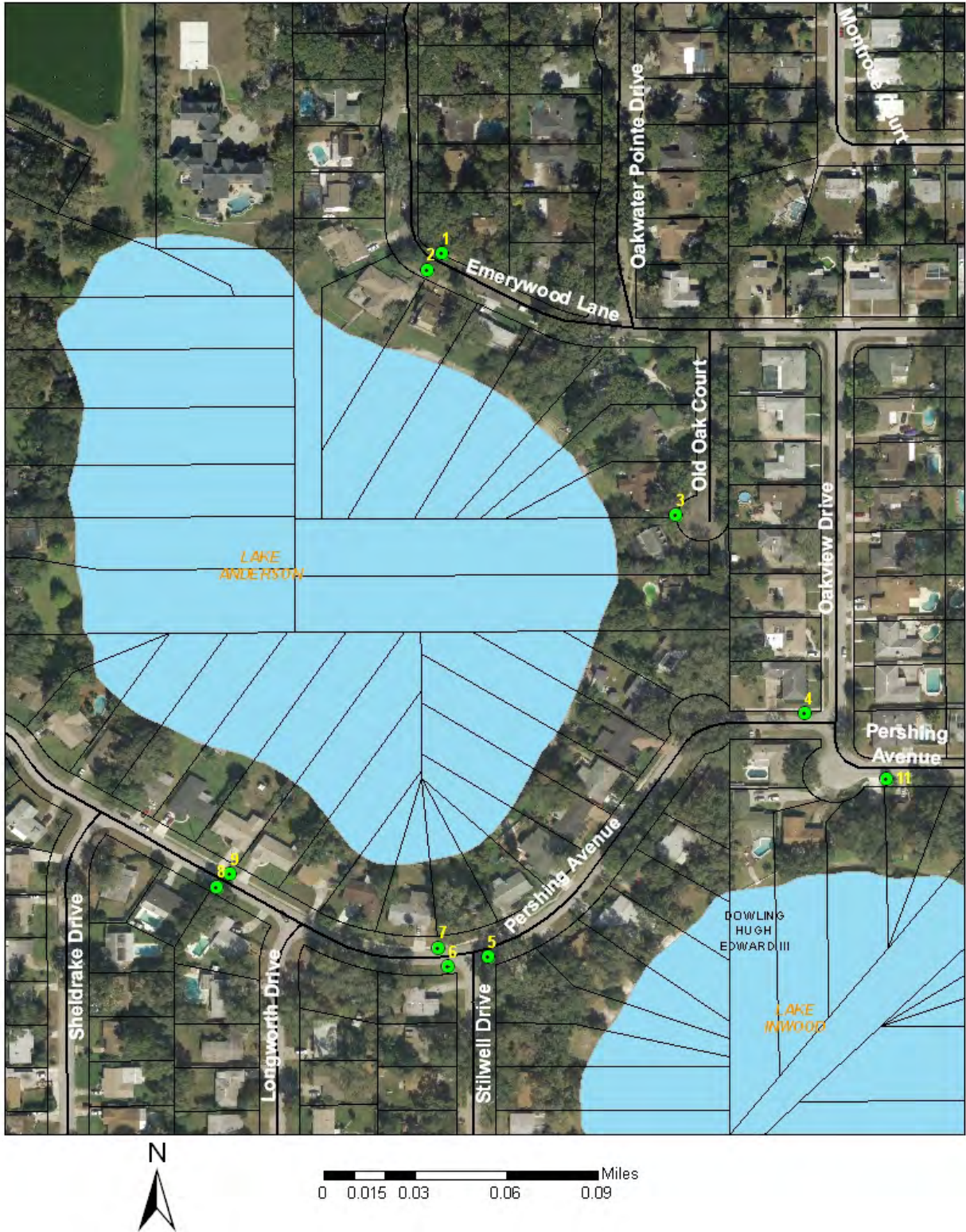


Attachment A2

Lake	Street	Basket No.	Basket Weight	Type
Bass	2937 Dawley Avenue	1	21.00	HCIB
Bass	2928 Dawley Avenue	2	16.50	HCIB
Bass	3224 E. Jersey Drive	3	34.20	GISB
Bass	3226 E. Jersey Drive	4	61.00	GISB
Bass	2745 Bass Lake Drive	5	21.80	HCIB
Bass	2744 Bass Lake Drive	6	26.00	HCIB

Lake Anderson CIB Locations

Attachment B1

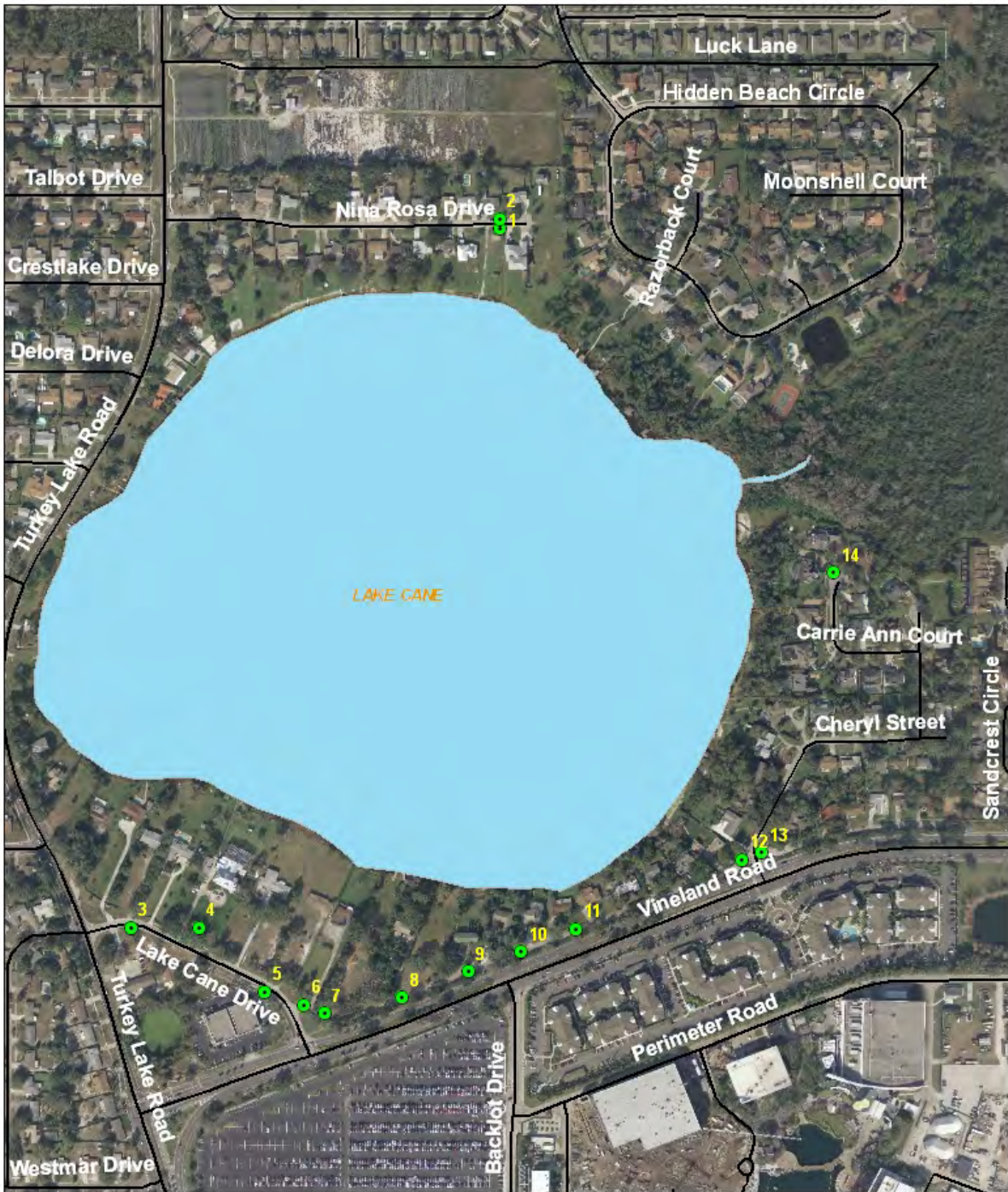


Attachment B2

Lake	Street	Basket No.	Basket Weight	Type
Lake Anderson	3563 EMERYWOOD LN	1	31.00	GIB
Lake Anderson	3562 EMERYWOOD LN	2	31.00	GIB
Lake Anderson	3680 OLD OAK CT	3	31.00	GIB
Lake Anderson	3628 OAKVIEW DR	4	21.80	CIB
Lake Anderson	3604 PERSHING AVE	5	21.80	CIB
Lake Anderson	3521 PERSHING AVE	6	18.60	CIB
Lake Anderson	3521 PERSHING AVE	7	24.40	CIB
Lake Anderson	3432 PERSHING AVE	8	18.00	CIB
Lake Anderson	3433 PERSHING AVE	9	24.40	CIB
Lake Anderson	4014 PERSHING AVE	10	26.00	CIB
Lake Anderson	4014 PERSHING AVE	11	30.00	CIB

Lake Cane CIB Locations

Attachment C1

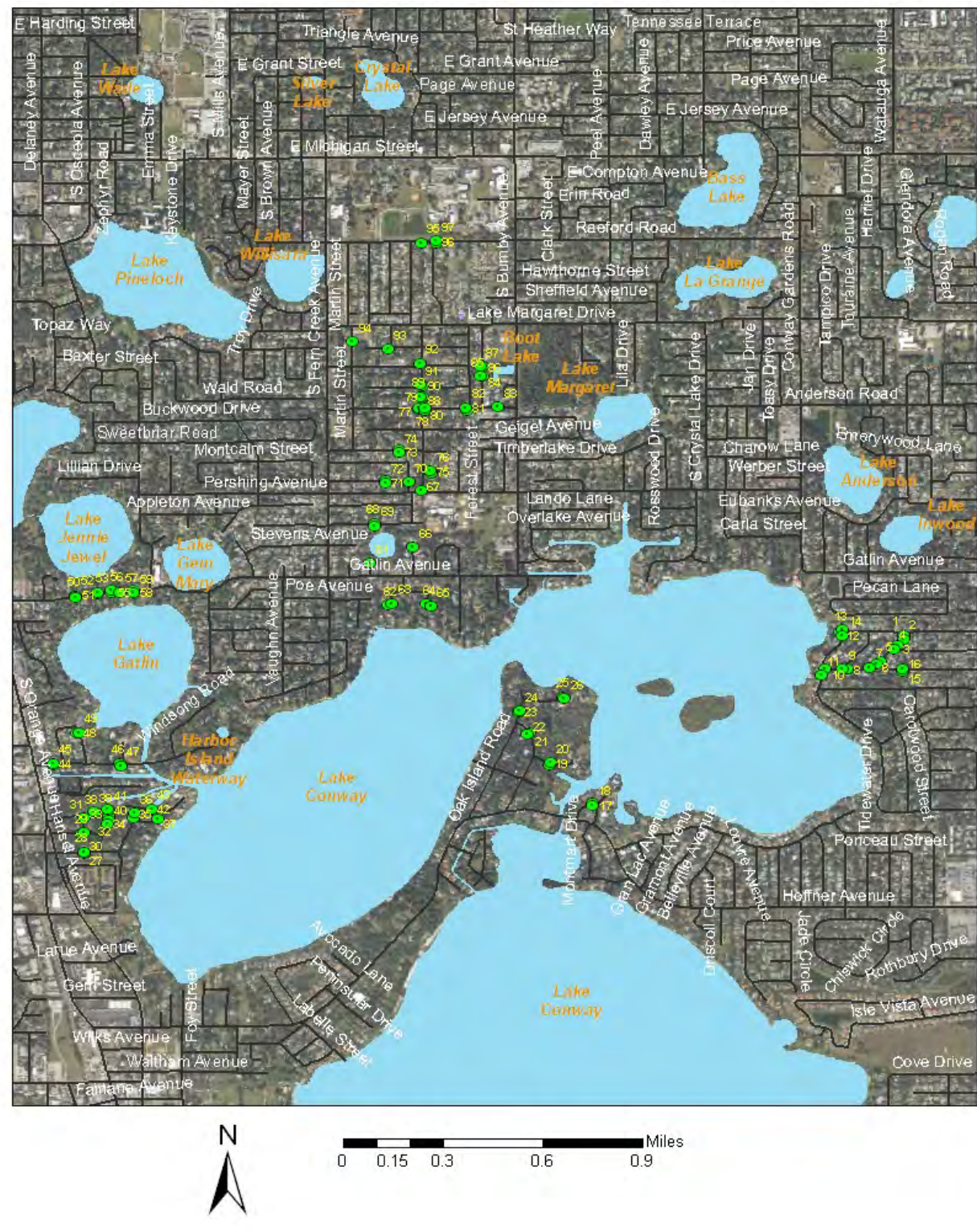


Attachment C2

Lake	Street	Basket No.	Suntree Tag ID.	Basket Weight	Type
Cane	6530 Nina Rosa Drive	0001	SC04001EPD7173	24.00	HCIB
Cane	6529 Nina Rosa Drive	0002	SC04001EPD7173	24.00	HCIB
Cane	6665 Lake Cane Drive	0003	SC04001EPD7173	19.60	GISB-P
Cane	6645 Lake Cane Drive	0004	SC04001EPD7173	40.00	GISB-P
Cane	6617 Lake Cane Drive	0005	SC04001EPD7173	40.00	GISB-P
Cane	6609 West Vineland Road	0006	SC04001EPD7173	36.80	GISB-P
Cane	6601 West Vineland Road	0007	SC04001EPD7173	36.80	GISB-P
Cane	6535 Vineland Road	0008	SC04001EPD7173	36.80	GISB-P
Cane	6519 Vineland Road	0009	SC04001EPD7173	36.80	GISB-P
Cane	6511 Vineland Road	0010	SC04001EPD7173	36.80	GISB-P
Cane	6503 Vineland Road	0011	SC04001EPD7173	24.60	GISB-P
Cane	6401 Vineland Road	0012	SC04001EPD7173	24.60	GISB-P
Cane	6337 Vineland Road	0013	SC04001EPD7173	24.60	GISB-P
Cane	5200 Patricia Dr.	0014	SC04001EPD7173	13.80	HCIB

Lake Conway CIB Locations

Attachment D1



Attachment D2

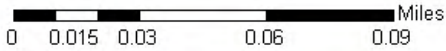
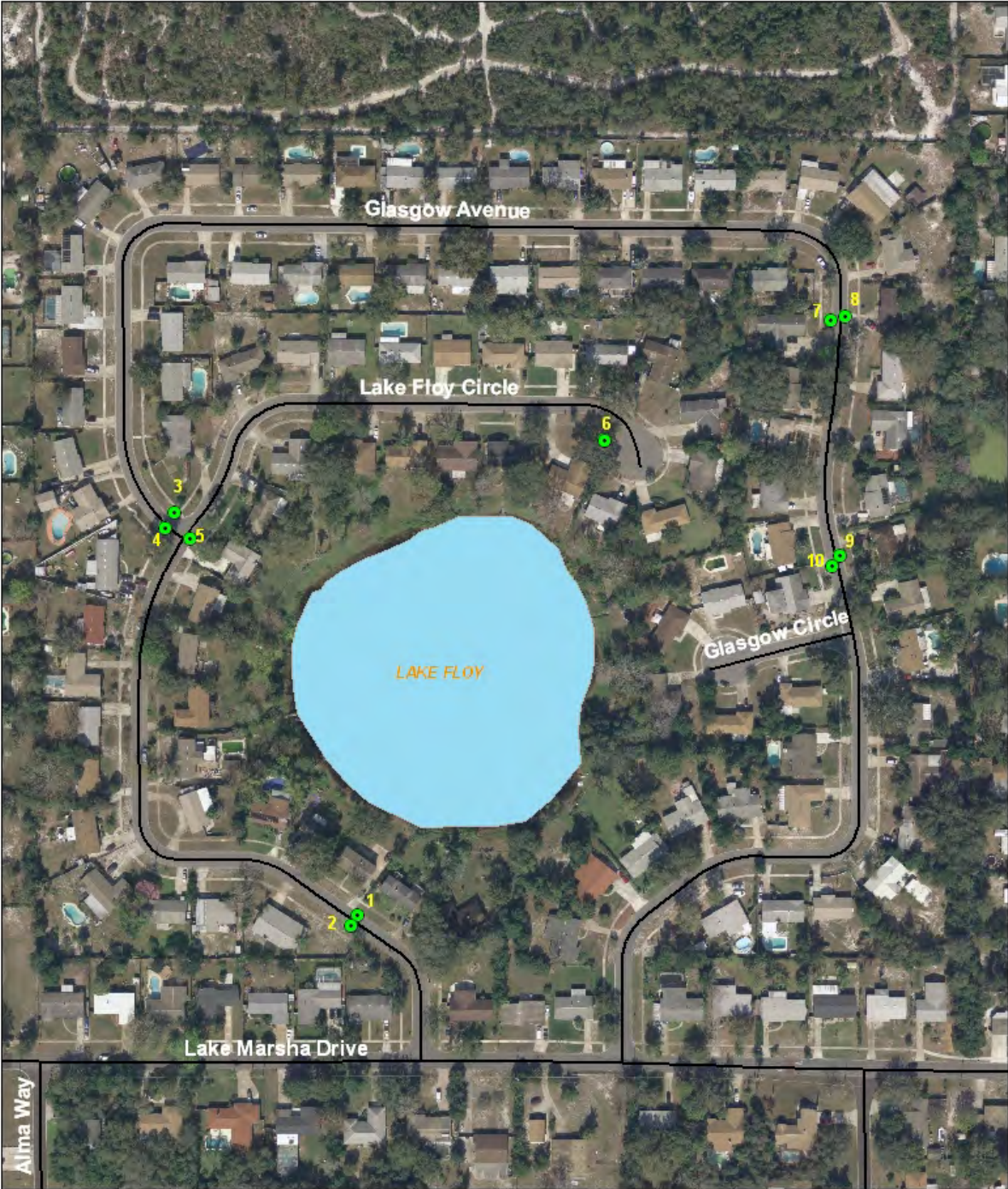
Lake	Street	Basket No.	Suntree Tag ID.	Basket Weight	Type
Conway	4123 Old Dominion Rd.	0001	BC080001EPD7579	25.00	HCIB
Conway	4123 Old Dominion Rd.	0002	BC080002EPD7579	25.00	HCIB
Conway	4116 Old Dominion Rd.	0003	BC080003EPD7579	24.20	HCIB
Conway	4116 Old Dominion Rd.	0004	BC080004EPD7579	24.20	HCIB
Conway	4107 Old Dominion Rd.	0005	BC080005EPD7579	24.20	HCIB
Conway	4101 Old Dominion Rd.	0006	BC080006EPD7579	18.00	HCIB
Conway	4042 Old Dominion Rd.	0007	BC080007EPD7579	25.60	HCIB
Conway	4020 Old Dominion Rd.	0008	BC080008EPD7579	17.80	HCIB
Conway	4020 Old Dominion Rd.	0009	BC080009EPD7579	24.40	HCIB
Conway	4298 Tidewater Dr.	0010	BC080010EPD7579	21.20	HCIB
Conway	4298 Tidewater Dr.	0011	BC080011EPD7579	23.20	HCIB
Conway	4256 Tidewater Dr.	0012	BC080012EPD7579	18.80	HCIB
Conway	4256 Tidewater Dr.	0013	BC080013EPD7579	22.80	HCIB
Conway	4256 Tidewater Dr.	0014	BC080014EPD7579	22.80	HCIB
Conway	4134 Stonewall Dr.	0017	BC080015EPD7579	40.00	HCIB
Conway	4134 Stonewall Dr.	0016	BC080016EPD7579	24.20	HCIB
Conway	5024 St Denis Ct	0018	BC080017EPD8642	21.10	HCIB
Conway	5028 St Dennis Ct	0019	BC080018EPD8642	13.60	HCIB
Conway	Kissam Ct (before dead end)	0020	BC080019EPD8642	21.20	HCIB
Conway	Kissam Ct (before dead end)	0021	BC080020EPD8642	21.20	HCIB
Conway	5021 Pleasure Island Rd	0022	BC080021EPD8642	21.20	HCIB
Conway	5021 Pleasure Island Rd	0023	BC080022EPD8642	21.20	HCIB
Conway	4948 Oak Island Road	0024	BC080023EPD8642	21.20	HCIB
Conway	4948 Oak Island Road	0025	BC080024EPD8642	21.20	HCIB
Conway	2533 Oak Island Pointe	0026	BC080025EPD8642	21.20	HCIB
Conway	2533 Oak Island Pointe	0027	BC080026EPD8642	20.00	HCIB
Conway	408 Oak Lynn Dr	0028	BC080027EPD8642	21.20	HCIB
Conway	403 Oak Lynn Dr	0029	BC080028EPD8642	21.20	HCIB
Conway	406 lynwell Dr	0030	BC080029EPD8642	21.00	HCIB
Conway	406 lynwell Dr	0031	BC080030EPD8642	21.00	HCIB
Conway	5203 Hedge Ct	0032	BC080031EPD8642	50.00	HCIB
Conway	5200 Haveril Dr	0033	BC080032EPD8642	50.00	HCIB
Conway	5205 Haveril Dr	0034	BC080033EPD8642	36.40	HCIB
Conway	5212 Haveril	0035	BC080034EPD8642	36.40	HCIB
Conway	5202 Alleman Dr	0037	BC080035EPD8642	22.00	HCIB
Conway	5202 Alleman Dr	0038	BC080036EPD8642	50.00	HCIB
Conway	522 Linson Ct	0037	BC080037EPD8642	21.00	HCIB
Conway	425 Mandalay Rd (vacant Lot)	0038	BC080038EPD8642	21.40	HCIB
Conway	425 Mandalay Rd (vacant Lot)	0039	BC080039EPD8642	21.40	HCIB
Conway	449 Mandalay Rd	0041	BC080040EPD8642	13.60	HCIB
Conway	449 Mandalay Rd	0042	BC080041EPD8642	17.20	HCIB

Lake	Street	Basket No.	Suntree Tag ID.	Basket Weight	Type
Conway	515 Mandalay Rd	0043	BC080042EPD8642	26.80	HCIB
Conway	515 Mandalay Rd	0044	BC080043EPD8642	50.00	HCIB
Conway	316 Harbour Island Rd	0045	BC080044EPD8642	19.60	HCIB
Conway	316 Harbour Island Rd	0046	BC080045EPD8642	21.00	HCIB
Conway	492 Harbour Island Rd	0047	BC080046EPD8642	21.00	HCIB
Conway	492 Harbour Island Rd	0048	BC080047EPD8642	22.00	HCIB
Conway	5104 The Oaks Circle	0049	BC080048EPD8642	15.40	HCIB
Conway	5104 The Oaks Circle	0050	BC080049EPD8642	24.20	HCIB
Conway	509 Gatlin Ave	0051	BC080050EPD8642	22.20	HCIB
Conway	510 Gatlin Ave	0052	BC080051EPD8642	23.40	HCIB
Conway	600 Gatlin Ave	0053	BC080052EPD8642	26.80	HCIB
Conway	601 Gatlin Ave	0054	BC080053EPD8642	24.20	HCIB
Conway	630 Gatlin Ave	0055	BC080054EPD8642	24.20	HCIB
Conway	632 Gatlin Ave	0056	BC080055EPD8642	25.20	HCIB
Conway	633 Gatlin Ave	0057	BC080056EPD8642	25.20	HCIB
Conway	695 Gatlin Ave	0058	BC080057EPD8642	24.20	HCIB
Conway	721 Gatlin Ave	0059	BC080058EPD8642	21.20	HCIB
Conway	750 Gatlin Ave	0060	BC080059EPD8642	24.20	HCIB
Conway	Deede Lane	0061	BC080061EPD9727	22.6	HCIB
Conway	1700 Lake Grove Lane	0062	BC080062EPD9727	19.6	HCIB
Conway	1701 Lake Grove Lane	0063	BC080063EPD9727	22.4	HCIB
Conway	1812 Lake Grove Lane	0064	BC080064EPD9727	17.6	HCIB
Conway	Across from 1812 Lake Grove Lane	0065	BC080065EPD9727	16.4	HCIB
Conway	4507 Crichton Lane	0066	BC080066EPD9727	20.4	HCIB
Conway	E. Pershing & Ontario	0067	BC080067EPD9727	22.0	HCIB
Conway	1617 Overlake Ave	0068	BC080068EPD9727	28.0	HCIB
Conway	1614 Overlake Ave	0069	BC080069EPD9727	28.0	HCIB
Conway	Campbell & March	0070	BC080070EPD9727	18.4	HCIB
Conway	1703 Campbell Street	0071	BC080071EPD9727	18.0	HCIB
Conway	1706 Campbell Street	0072	BC080072EPD9727	19.0	HCIB
Conway	1805 Simonton Ave	0073	BC080073EPD9727	18.2	HCIB
Conway	Across from 1805 Simonton Ave	0074	BC080074EPD9727	24.4	HCIB
Conway	1906 Bush Ave	0075	BC080075EPD9727	19.0	HCIB
Conway	1903 Bush Ave	0076	BC080076EPD9727	21.4	HCIB
Conway	1896 White Ave	0077	BC080077EPD9727	15.0	HCIB
Conway	Across from 1896 White Ave	0078	BC080078EPD9727	25.8	HCIB
Conway	1904 White Ave	0079	BC080079EPD9727	22.6	HCIB
Conway	1901 White Ave	0080	BC080080EPD9727	18.4	HCIB
Conway	2012 White Ave	0081	BC080081EPD9727	24.6	HCIB
Conway	Across from 2012 White Ave	0082	BC080082EPD9727	25.2	HCIB
Conway	White Ave	0083	BC080083EPD9727	20.4	HCIB
Conway	3312 Florene	0084	BC080084EPD9727	22.6	HCIB
Conway	Across from 3312 Florene	0085	BC080085EPD9727	25.0	HCIB

Lake	Street	Basket No.	Suntree Tag ID.	Basket Weight	Type
Conway	Across from 3300 Florene	0086	BC080086EPD9727	18.6	HCIB
Conway	3300 Florene	0087	BC080087EPD9727	19.2	HCIB
Conway	Across from 3326 Ontario Ave	0088	BC080088EPD9727	19.4	HCIB
Conway	3326 Ontario Ave	0089	BC080089EPD9727	20.4	HCIB
Conway	3303 Ontario Ave	0090	BC080090EPD9727	20.2	HCIB
Conway	Across from 3303 Ontario	0091	BC080091EPD9727	17.0	HCIB
Conway	Ontario Ave & Baxter	0092	BC080092EPD9727	18.2	HCIB
Conway	1791 Melvin Ave	0093	BC080093EPD9727	16.8	HCIB
Conway	Across from 3324 Martin St	0094	BC080094EPD9727	26.0	HCIB
Conway	1914 Raeford	0095	BC080095EPD9727	17.0	HCIB
Conway	1970 Raeford	0096	BC080096EPD9727	18.4	HCIB
Conway	Across from 1970 Raeford	0097	BC080097EPD9727	17.4	HCIB

Lake Floy CIB Locations

Attachment E1

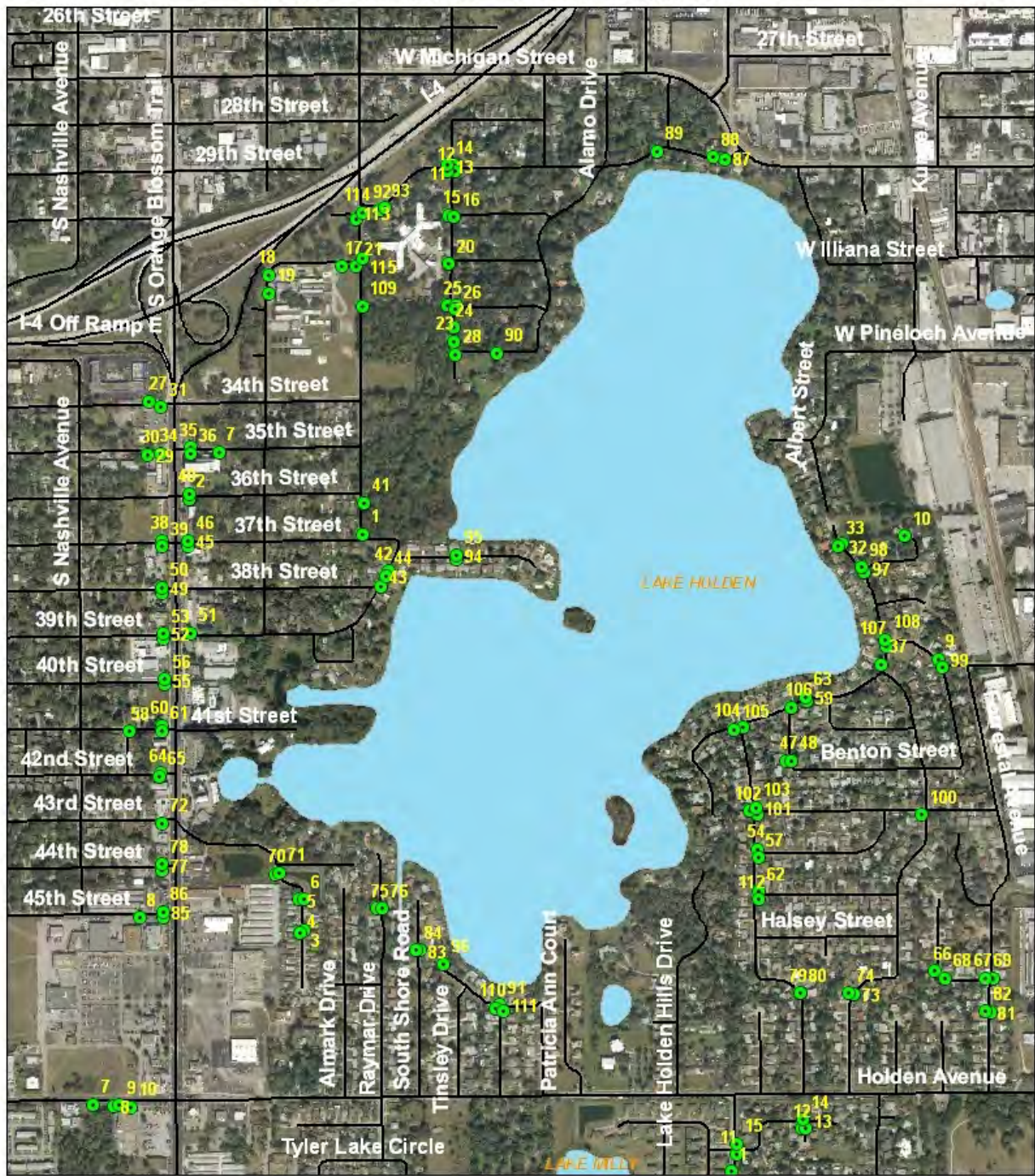


Attachment E2

Lake	Street	Basket No.	Basket Weight	Type
Floy	5005 Glasglow Avenue	1	23.20	HCIB
Floy	5010 Glasglow Avenue	2	25.60	HCIB
Floy	5151 Glasglow Avenue	3	29.20	HCIB
Floy	5151 Glasglow Avenue	4	29.20	HCIB
Floy	5151 Glasglow Avenue	5	29.20	HCIB
Floy	7200 Lake Floy Circle	6	23.20	HCIB
Floy	5308 Glasglow Avenue	7	25.60	HCIB
Floy	5307 Glasglow Avenue	8	25.60	HCIB
Floy	5332 Glasglow Avenue	9	29.20	HCIB
Floy	5325 Glasglow Avenue	10	29.20	HCIB

Lake Holden CIB Locations

Attachment F1



Attachment F2

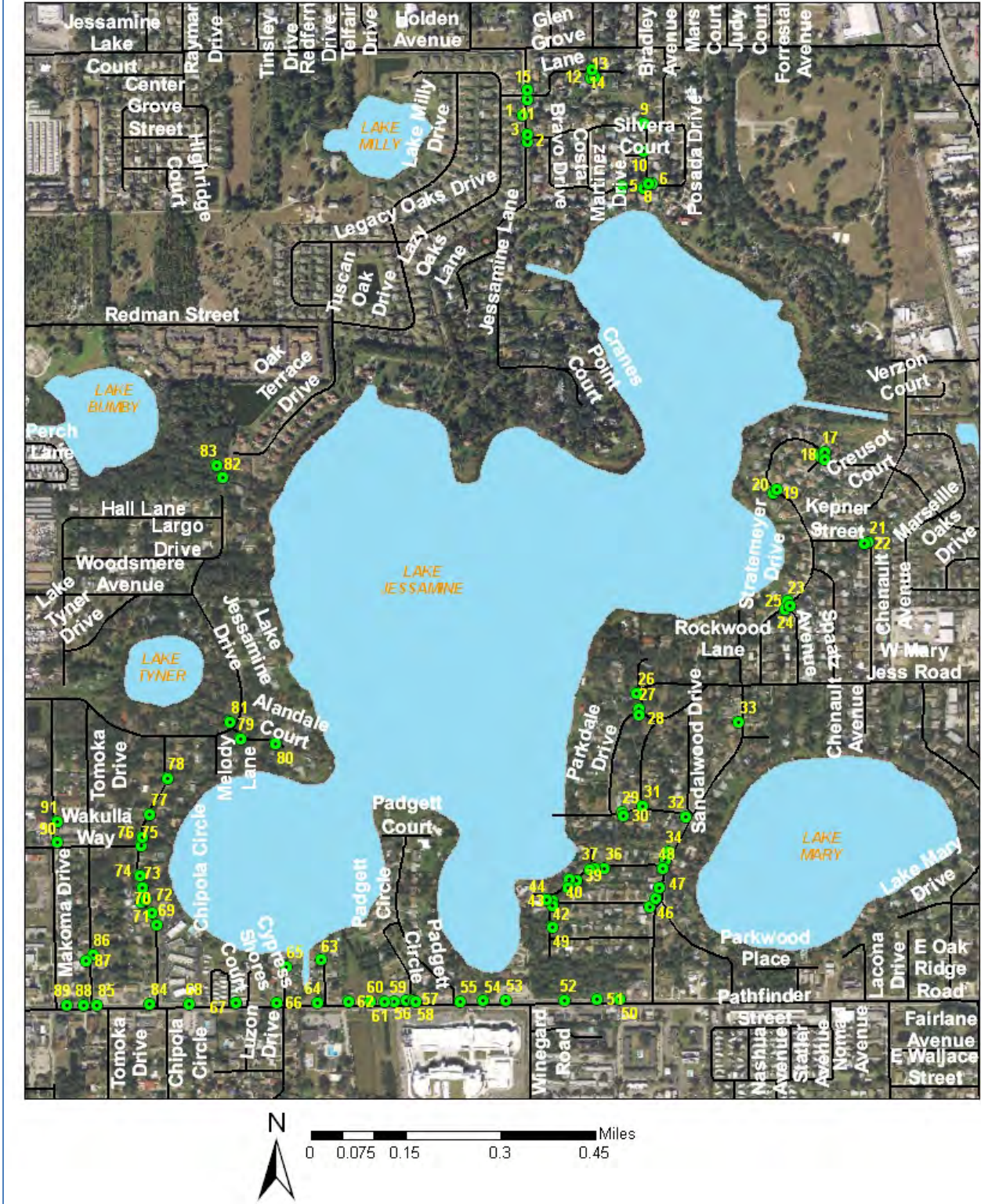
Lake	Street	Basket No.	Suntree Tag ID	Basket Weight	Type
Holden	37th & Westmoreland Dr.	0001	BC140001EPD7039	21.20	GIB
Holden	37th & Westmoreland Dr.	0002	BC140002EPD7039	21.20	GIB
Holden	1139 43rd St.	0003	BC140003EPD7585	22.00	CIB
Holden	1142 43rd St.	0004	BC140004EPD7585	22.00	CIB
Holden	1160 43rd St.	0005	BC140005EPD7585	22.00	CIB
Holden	1160 43rd St.	0006	BC140006EPD7585	22.00	CIB
Holden	1211 35th St.	0007	BC140007EPD7585	18.00	GIB
Holden	1313 45th St	0008	BC140008EPD7585	21.00	GIB
Holden	203 Drennen Rd.	0009	BC140009EPD7039	13.40	CIB
Holden	205 Cattail Ct.	0010	BC140010EPD7039	24.00	CIB
Holden	29th & Lee Ave.	0011	BC140011EPD7039	60.00	GIB
Holden	29th & Lee Ave.	0012	BC140012EPD7039	60.00	GIB
Holden	29th & Lee Ave.	0013	BC140013EPD7039	47.00	GIB
Holden	29th St & Lee Ave.	0014	BC140014EPD7585	60.00	GIB
Holden	30th & Lee Ave.	0015	BC140015EPD7039	70.00	GIB
Holden	30th & Lee Ave.	0016	BC140016EPD7039	33.00	GIB
Holden	31st & school drive way	0017	BC140017EPD7585	60.00	GIB
Holden	31st & Main school entrance	0018	BC140018EPD7039	21.00	GIB
Holden	31st & Main school entrance	0019	BC140019EPD7039	60.00	GIB
Holden	31st St & Lee Ave.	0020	BC140020EPD7039	60.00	GIB
Holden	31st St & Westmoreland Dr.	0021	BC140021EPD7585	32.60	GIB
Holden	3223 Lee Ave.	0022	BC140022EPD7039	24.20	GIB
Holden	3223 Lee Ave.	0023	BC140023EPD7039	35.00	GIB
Holden	32nd & Lee Ave.	0024	BC140024EPD7039	60.00	GIB
Holden	32nd & Lee Ave.	0025	BC140025EPD7039	44.00	GIB
Holden	32nd & Lee Ave.	0026	BC140026EPD7039	60.00	GIB
Holden	3300 34th St.	0027	BC140027EPD7585	25.60	P5/CIB
Holden	33rd St & Lee Ave.	0028	BC140028EPD7039	44.00	GIB
Holden	3400 35th St.	0029	BC140029EPD7585	33.50	GIB
Holden	3400 35th St.	0030	BC140030EPD7585	20.00	GIB
Holden	34th St & SR 441	0031	BC140031EPD7585	25.60	P5/CIB
Holden	3516 MacArthur Dr.	0032	BC140032EPD7039	22.80	CIB
Holden	3516 MacArthur Dr.	0033	BC140033EPD7039	16.40	CIB
Holden	35th St & SR 441	0034	BC140034EPD7585	44.00	GIB
Holden	35th St & SR 441	0035	BC140035EPD7585	16.00	GIB
Holden	35th St & SR 441	0036	BC140036EPD7585	23.00	GIB
Holden	3641 MacArthur Dr.	0037	BC140037EPD7039	16.40	CIB
Holden	3698 37th St.	0038	BC140038EPD7585	63.00	GIB
Holden	3698 37th St.	0039	BC140039EPD7585	63.00	GIB
Holden	36th St & SR 441	0040	BC140040EPD7585	55.00	P5/CIB
Holden	36th St & SR441	0041	BC140041EPD7585	24.10	GIB

Lake	Street	Basket No.	Suntree Tag ID	Basket Weight	Type
Holden	3781 Laguna St.	0042	BC140042EPD7585	28.00	GIB
Holden	3789 Laguna Dr.	0043	BC140043EPD7039	35.00	GIB
Holden	3789 Laguna St.	0044	BC140044EPD7585	45.00	GIB
Holden	37th St & SR 441	0045	BC140045EPD7585	55.00	GIB
Holden	37th St & SR 441	0046	BC140046EPD7585	55.00	GIB
Holden	3826 Milford Ave.	0047	BC140047EPD7039	21.20	CIB
Holden	3826 Milford Ave.	0048	BC140048EPD7039	30.00	CIB
Holden	38th St & SR 441	0049	BC140049EPD7585	44.00	GIB
Holden	38th St & SR 441	0050	BC140050EPD7585	44.00	GIB
Holden	39th St & SR 441	0051	BC140051EPD7585	70.00	CIB
Holden	39th St & SR 441	0052	BC140052EPD7585	25.40	P5/CIB
Holden	39th St & SR 441	0053	BC140053EPD7585	25.40	P5/CIB
Holden	4018 Brandeis Ave.	0054	BC140054EPD7585	16.40	CIB
Holden	40th St & SR441	0055	BC140055EPD7585	25.40	P5/CIB
Holden	40th St & SR441	0056	BC140056EPD7585	25.40	P5/CIB
Holden	4102 Brandeis Ave.	0057	BC140057EPD7585	16.40	CIB
Holden	4102 Delray Ave.	0058	BC140058EPD7585	25.00	CIB
Holden	412 McAuthor Dr.	0059	BC140059EPD7039	24.00	CIB
Holden	41th St & SR 441	0060	BC140060EPD7585	55.60	GIB
Holden	41th St & SR 441	0061	BC140061EPD7585	55.60	GIB
Holden	4210 Brandeis Ave.	0062	BC140062EPD7585	13.00	CIB
Holden	425 McAuthor Dr.	0063	BC140063EPD7039	18.00	CIB
Holden	42th St & SR 441	0064	BC140064EPD7585	25.00	P5/CIB
Holden	42nd St & SR 441	0065	BC140065EPD7585	22.00	P5/CIB
Holden	4312 Ilene Ct.	0066	BC140066EPD7585	15.80	CIB
Holden	4319 Forrestal Ave.	0067	BC140067EPD7585	24.00	CIB
Holden	4320 Ilene Ct.	0068	BC140068EPD7585	24.00	CIB
Holden	4359 Forrestal Ave.	0069	BC140069EPD7585	30.00	CIB
Holden	43rd St & Honey Girl Lane	0070	BC140070EPD7585	20.00	CIB
Holden	43rd St & Honey Girl Lane	0071	BC140071EPD7585	17.00	CIB
Holden	43th St & SR 441	0072	BC140072EPD7585	55.00	GIB
Holden	4425 Bradley Ave.	0073	BC140073EPD7039	26.20	CIB
Holden	4425 Bradley Ave.	0074	BC140074EPD7039	26.20	CIB
Holden	4428 Raymar Dr	0075	BC140075EPD7039	19.80	CIB
Holden	4428 Raymar Dr.	0076	BC140076EPD7039	21.60	CIB
Holden	44th St & SR 441	0077	BC140077EPD7585	55.00	GIB
Holden	44th St & SR 441	0078	BC140078EPD7585	55.00	GIB
Holden	4503 Brandeis Ave.	0079	BC140079EPD7039	24.00	CIB
Holden	4503 Brandeis Ave.	0080	BC140080EPD7039	21.60	CIB
Holden	4507 Forrestal Ave.	0081	BC140081EPD7585	24.00	CIB
Holden	4507 Forrestal Ave.	0082	BC140082EPD7585	22.00	CIB
Holden	4524 S. Shore Rd.	0083	BC140083EPD7039	24.00	CIB
Holden	4524 S. Shore Rd.	0084	BC140084EPD7039	18.00	CIB

Lake	Street	Basket No.	Suntree Tag ID	Basket Weight	Type
Holden	45th St & SR 441	0085	BC140085EPD7585	55.00	GIB
Holden	45th St & SR 441	0086	BC140086EPD7585	55.00	GIB
Holden	500 29th St.	0087	BC140087EPD7039	26.00	GIB
Holden	501 29th St.	0088	BC140088EPD7039	22.40	GIB
Holden	600 29th St.	0089	BC140089EPD7039	35.20	GIB
Holden	709 33rd St.	0090	BC140090EPD7039	29.20	GIB
Holden	819 Springwood	0091	BC140091EPD7039	24.00	CIB
Holden	830 W. 29th St.	0092	BC140092EPD7039	24.00	CIB
Holden	830 W. 29th St.	0093	BC140093EPD7039	24.00	CIB
Holden	908 West Lake Holden Pt.	0094	BC140094EPD7585	22.00	CIB
Holden	908 West Lake Holden Pt.	0095	BC140095EPD7585	18.00	CIB
Holden	913 Springwood	0096	BC140096EPD7039	24.00	CIB
Holden	Cattail Ct & MacArthur Dr.	0097	BC140097EPD7039	24.00	CIB
Holden	Cattail Ct & MacArthur Dr.	0098	BC140098EPD7039	24.00	CIB
Holden	Drennen Rd & Bainbridge Ave.	0099	BC140099EPD7039	15.00	CIB
Holden	Krueger St & Bradley Ave.	0100	BC140100EPD7039	22.00	CIB
Holden	Krueger St & Brandeis Ave.	0101	BC140101EPD7039	24.00	CIB
Holden	Krueger St & Brandeis Ave.	0102	BC140102EPD7039	24.00	CIB
Holden	Krueger St & Brandeis Ave.	0103	BC140103EPD7039	24.00	CIB
Holden	MacArthur Dr & Brandeis Ave.	0104	BC140104EPD7039	15.20	CIB
Holden	MacArthur Dr & Brandeis Ave.	0105	BC140105EPD7039	24.20	CIB
Holden	MacArthur Dr & Milford Ave.	0106	BC140106EPD7039	30.00	CIB
Holden	MacArthur Dr & Drennen Rd.	0107	BC140107EPD7039	30.00	CIB
Holden	MacAuthor Dr & Drennen Rd.	0108	BC140108EPD7039	24.00	CIB
Holden	S. Westmoreland Dr. (east side south of 31st)	0109	BC140109EPD7585	40.00	GIB
Holden	Springwood & Red Fern	0110	BC140110EPD7039	24.00	CIB
Holden	Springwood & Red Fern	0111	BC140111EPD7039	18.00	CIB
Holden	Stimson St./Brandeis Ave.	0112	BC140112EPD7039	23.00	CIB
Holden	Westmoreland Dr & 30th	0113	BC140113EPD7039	68.00	GIB
Holden	Westmoreland Dr & 30th	0114	BC140114EPD7039	68.00	GIB
Holden	Westmoreland Dr & 31st	0115	BC140115EPD7039	40.00	GIB

Lake Jessamine CIB Locations

Attachment G1



Attachment G2

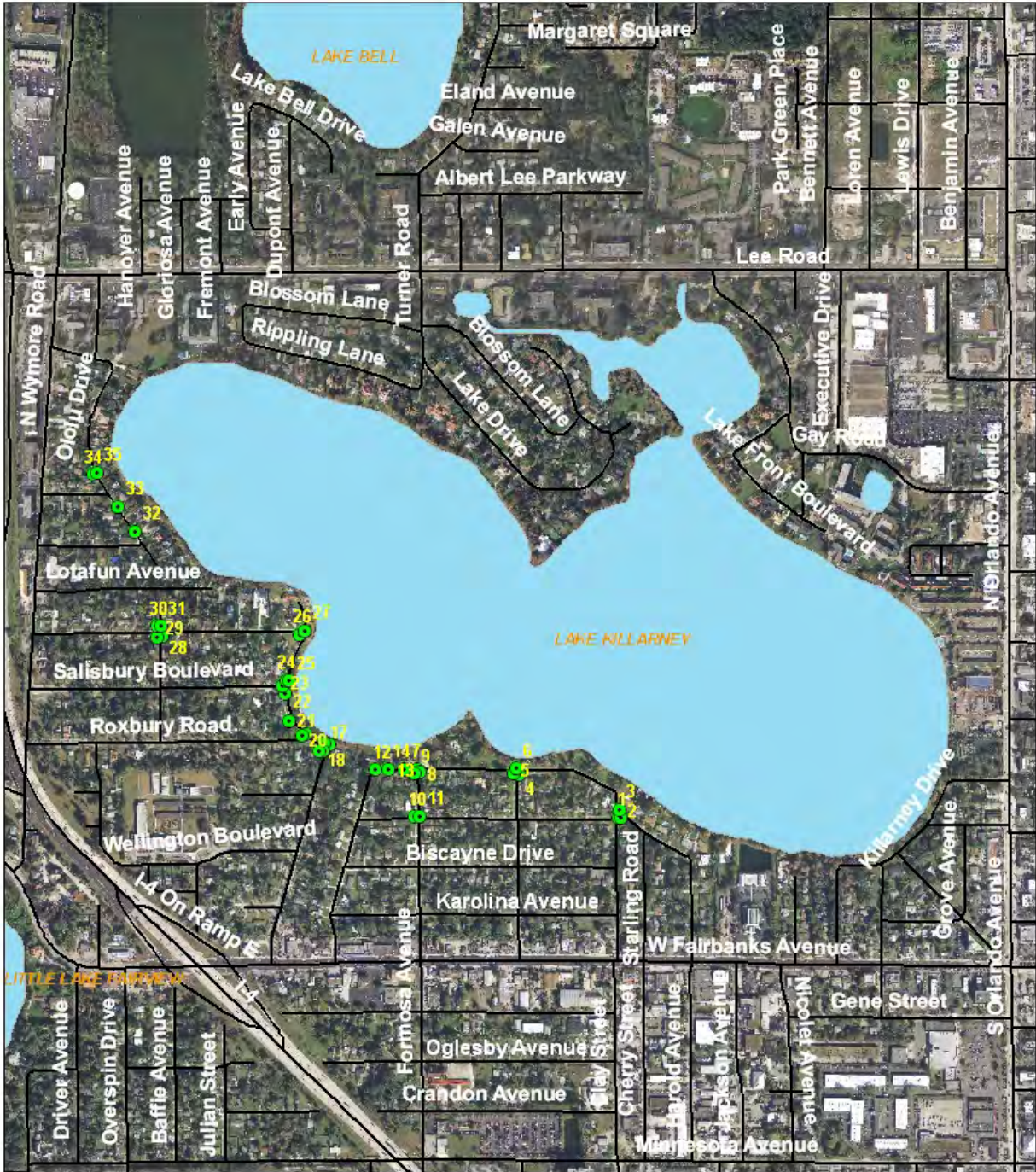
Lake	Street	Basket No.	Suntree Tag ID	Basket Weight	Type
Jessamine	4795 Jessamine Lane	1	BC170001EPD7152	33.00	HCIB
Jessamine	Jessamine Lane & Del Rio	2	BC170002EPD7152	33.00	HCIB
Jessamine	Jessamine Lane & Del Rio	3	BC170003EPD7152	33.00	HCIB
Jessamine	617 Viscaya Avenue	4	BC170004EPD7152	32.20	HCIB
Jessamine	616 Viscaya Avenue	5	BC170005EPD7152	32.20	HCIB
Jessamine	608 Viscaya Avenue	6	BC170006EPD7152	24.20	HCIB
Jessamine	608 Viscaya Avenue	7	BC170007EPD7152	24.60	HCIB
Jessamine	608 Viscaya Avenue	8	BC170008EPD7152	24.20	HCIB
Jessamine	Del Rio Street & Silvera Dr	9	BC170009EPD7152	27.60	HCIB
Jessamine	4689 Silvera Drive	10	BC170010EPD7152	17.60	HCIB
Jessamine	Jessamine Lane & Glen Grove Ln	11	BC170011EPD7152	32.00	HCIB
Jessamine	Green Glen Court	12	BC170012EPD7152	22.20	GISB
Jessamine	Green Glen Court	13	BC170013EPD7152	22.20	HCIB
Jessamine	525 Green Grove Lane	14	BC170014EPD7152	22.20	HCIB
Jessamine	Jessamine Ln & Glen Grove Ln	15	BC170015EPD7152	33.00	HCIB
Jessamine	5124 Stratemeyer & Avignon	16	BC170016EPD6997	21.20	HCIB
Jessamine	5124 Stratemeyer & Avignon	17	BC170017EPD6997	21.20	HCIB
Jessamine	5124 Stratemeyer & Avignon	18	BC170018EPD6997	21.20	GISB
Jessamine	5172 Stratemeyer Dr.	19	BC170019EPD6997	16.00	GISB
Jessamine	5177 Stratemeyer Dr.	20	BC170020EPD6997	16.00	GISB
Jessamine	5 Kepner	21	BC170021EPD6997	17.20	GISB
Jessamine	5 Kepner	22	BC170022EPD6997	12.60	GISB
Jessamine	Spatza & Stratemeyer	23	BC170023EPD6997	20.20	GISB
Jessamine	Spatza & Stratemeyer	24	BC170024EPD6997	20.20	GISB
Jessamine	Spatza & Stratemeyer	25	BC170025EPD6997	20.20	GISB
Jessamine	5510 Kenmore	26	BC170026EPD6997	35.00	GISB
Jessamine	Kenmore & Parkdale	27	BC170027EPD6997	21.80	GISB
Jessamine	Kenmore & Parkdale	28	BC170028EPD6997	13.40	GISB
Jessamine	411 Bywater Dr.	29	BC170029EPD6997	24.20	GISB
Jessamine	410 Bywater Dr.	30	BC170030EPD6997	24.20	GISB
Jessamine	406 Bywater Dr.	31	BC170031EPD6997	24.20	GISB
Jessamine	Rockwood Av & Bywater Dr	32	BC170032EPD7152	20.00	GISB
Jessamine	5528 Rockwood Avenue (back yard)	33	BC170033EPD7152	13.00	GISB
Jessamine	5717 Rockwood Avenue	34	BC170034EPD7152	33.00	GISB
Jessamine	5736 Rockwood Avenue	35	BC170035EPD7152	33.00	GISB
Jessamine	424 Roselawn Dr.	36	BC170036EPD6997	44.20	GISB
Jessamine	428 Roselawn Dr.	37	BC170037EPD6997	45.00	GISB
Jessamine	5709 Moonlight Cir.	38	BC170038EPD6997	44.50	GISB
Jessamine	5721 Moonlight Cir.	39	BC170039EPD6997	50.00	GISB

Lake	Street	Basket No.	Suntree Tag ID	Basket Weight	Type
Jessamine	5716 Moonlight Cir.	40	BC170040EPD6997	20.00	GISB
Jessamine	5727 Moonlight Cir.	41	BC170041EPD6997	32.30	GISB
Jessamine	Moonlight & Trinity	42	BC170042EPD6997	34.20	GISB
Jessamine	5809 Trinity Ln.	43	BC170043EPD6997	33.70	GISB
Jessamine	Trinity Ln & Moonlight Cir	44	BC170044EPD6997	38.20	GISB
Jessamine	Defiance Ave & Zimmerman	45	BC170045EPD7152	23.50	GISB
Jessamine	Defiance Ave & Zimmerman	46	BC170046EPD7152	23.80	GISB
Jessamine	5746 Rockwood Avenue	47	BC170047EPD7152	23.90	GISB
Jessamine	5738 Rockwood Avenue	48	BC170048EPD7152	22.40	GISB
Jessamine	5819 Trinity Ln.	49	BC170049EPD6997	20.00	HCIB
Jessamine	455 Oak Ridge Road (north side)	50	BC170050EPD7152	21.30	HCIB
Jessamine	500 Oak Ridge Road (north side)	51	BC170051EPD7152	21.20	HCIB
Jessamine	518 Oak Ridge Road (north side)	52	BC170052EPD7152	21.20	HCIB
Jessamine	633 W. Oak Ridge Road	53	BC170053EPD7152	26.60	HCIB
Jessamine	659 W. Oak Ridge Road	54	BC170054EPD7152	27.80	HCIB
Jessamine	689 W. Oak Ridge Road	55	BC170055EPD7152	30.40	HCIB
Jessamine	5890 Padgett Circle	56	BC170056EPD7152	24.00	GISB
Jessamine	5890 Padgett Circle	57	BC170057EPD7152	49.80	GISB
Jessamine	719 W. Oak Ridge Road	58	BC170058EPD7152	24.20	HCIB
Jessamine	741 W. Oak Ridge Road	59	BC170059EPD7152	24.20	HCIB
Jessamine	751 W. Oak Ridge Road	60	BC170060EPD7152	24.20	HCIB
Jessamine	763 W. Oak Ridge Road	61	BC170061EPD7152	24.20	HCIB
Jessamine	785 W. Oak Ridge Rd.	62	BC170062EPD6997	25.00	HCIB
Jessamine	5800 Shelburn Ct.	63	BC170063EPD6997	15.10	HCIB
Jessamine	5882 Shelburn Court	64	BC170064EPD7152	28.80	GISB
Jessamine	5803 Luzon Pl.	65	BC170065EPD6997	49.00	HCIB
Jessamine	5882 Luzon Place	66	BC170066EPD7152	24.20	HCIB
Jessamine	W. Oak Ridge Road	67	BC170067EPD7152	24.20	HCIB
Jessamine	949 W. Oak Ridge Road	68	BC170068EPD7152	24.21	GISB
Jessamine	5803 Chipola Cir.	69	BC170069EPD6997	34.90	GISB
Jessamine	5801 Chipola Cir.	70	BC170070EPD6997	35.40	GISB
Jessamine	5783 Chipola Cir.	71	BC170071EPD6997	32.30	GISB
Jessamine	5774 Chipola Cir.	72	BC170072EPD6997	32.40	GISB
Jessamine	5775 Chipola Cir.	73	BC170073EPD6997	32.50	GISB
Jessamine	5761 Chipola Cir.	74	BC170074EPD6997	33.00	GISB
Jessamine	5685 Chipola Cir.	75	BC170075EPD6997	45.00	GISB
Jessamine	5685 Chipola Cir.	76	BC170076EPD6997	36.10	GISB
Jessamine	5665 Chipola Cir.	77	BC170077EPD6997	32.80	GISB
Jessamine	5625 Chipola Cir.	78	BC170078EPD6997	32.60	GISB

Lake	Street	Basket No.	Suntree Tag ID	Basket Weight	Type
Jessamine	5451 Alandale Ct.	79	BC170079EPD6997	50.00	GISB
Jessamine	5499 Alandale Ct.	80	BC170080EPD6997	50.00	GISB
Jessamine	5494 Lake Jessamine	81	BC170081EPD6997	50.00	GISB
Jessamine	5201 Lake Jessamine	82	BC170082EPD6997	50.00	GISB
Jessamine	5399 Lake Jessamine	83	BC170083EPD6997	50.00	HCIB
Jessamine	5890 Chipola Cir.	84	BC170084EPD7152	21.20	HCIB
Jessamine	1065 W. Oak Ridge Road	85	BC170085EPD7152	24.20	GISB
Jessamine	5855 Tomoka Drive	86	BC170086EPD7152	29.80	GISB
Jessamine	5866 Tomoka Drive	87	BC170087EPD7152	24.20	GISB
Jessamine	1103 W. Oak Ridge Road	88	BC170088EPD7152	22.00	HCIB
Jessamine	1113 W. Oak Ridge Road	89	BC170089EPD7152	25.50	HCIB
Jessamine	5695 Makoma Drive	90	BC170090EPD7152	32.40	GISB
Jessamine	5681 Makoma Drive/Behind Fence	91	BC170091EPD7152	33.10	GISB
Jessamine	1257 W. Oak Ridge Road	92	BC170092EPD7152	39.80	GISB-P

Lake Killarney CIB Locations

Attachment H1

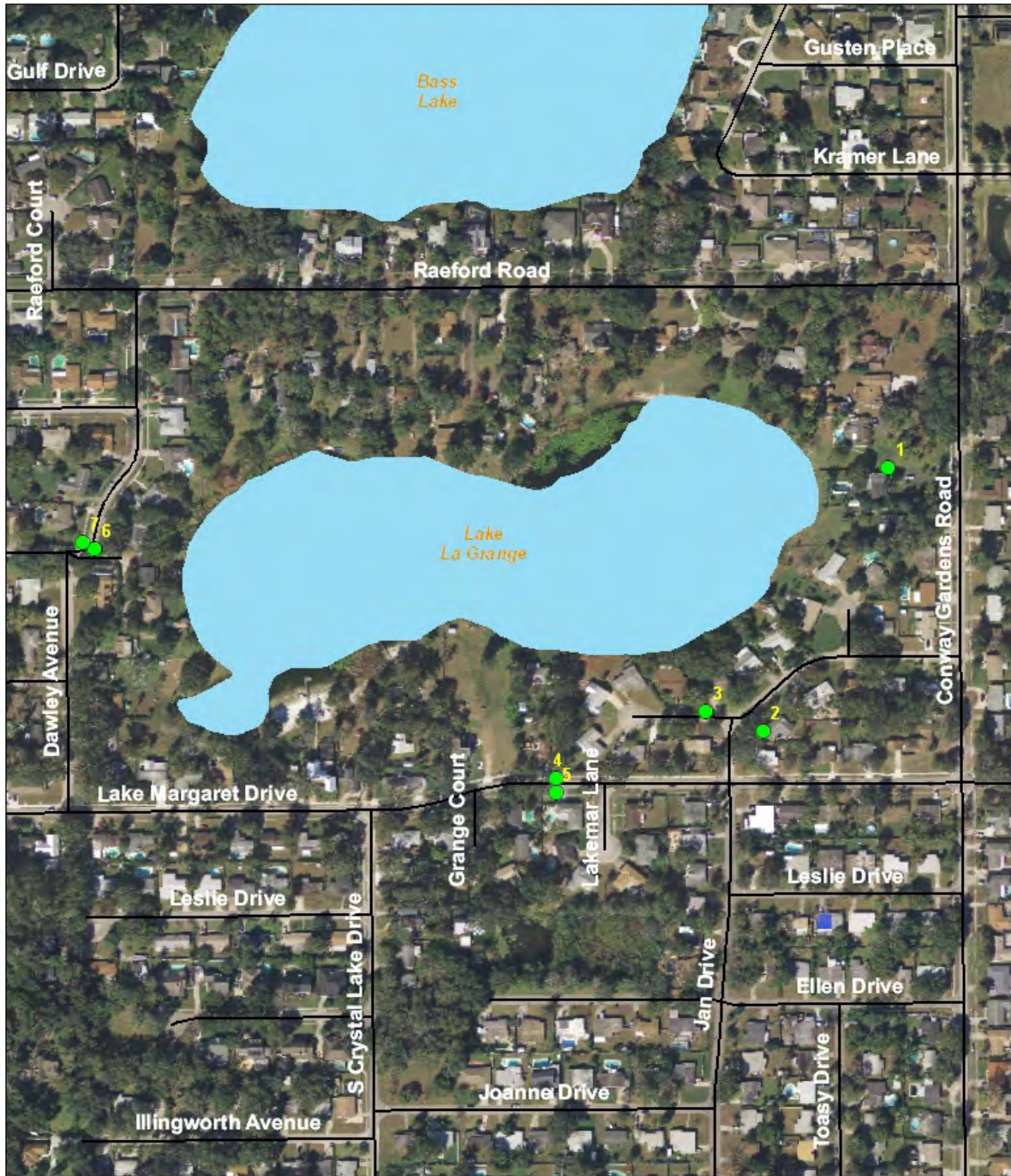


Attachment H2

Lake	Street	Basket No.	Suntree Tag ID	Basket Weight	Type
Killarney	1795 Killarney Dr.	0001	HB210001EPD7589	26.20	HCIB
Killarney	1795 Killarney Dr.	0002	HB210002EPD7589	20.20	GISB
Killarney	1795 Killarney Dr.	0003	HB210003EPD7589	20.20	HCIB
Killarney	1898 Killarney Dr.	0004	HB210004EPD7589	12.00	HCIB
Killarney	1898 Killarney Dr.	0005	HB210005EPD7589	15.50	HCIB
Killarney	1898 Killarney Dr.	0006	HB210006EPD7589	12.00	HCIB
Killarney	2101 Killarney Dr.	0007	HB210007EPD7589	17.20	GISB
Killarney	2101 Killarney Dr.	0008	HB210008EPD7589	22.60	GISB
Killarney	2101 Killarney Dr.	0009	HB210009EPD7589	20.60	GISB
Killarney	2100 Formosa Ave.	0010	HB210010EPD7589	10.60	GISB
Killarney	2100 Formosa Ave.	0011	HB210011EPD7589	22.00	GISB
Killarney	2109 Killarney Dr.	0012	HB210012EPD7589	22.80	GISB
Killarney	2105 Killarney Dr.	0013	HB210013EPD7589	22.80	GISB
Killarney	2101 Killarney Dr.	0014	HB210014EPD7589	22.80	GISB
Killarney	2117 Killarney Dr.	0015	HB210015EPD7589	16.20	HCIB
Killarney	2117 Killarney Dr.	0016	HB210016EPD7589	16.20	HCIB
Killarney	2117 Killarney Dr.	0017	HB210017EPD7589	16.20	HCIB
Killarney	2117 Killarney Dr.	0018	HB210018EPD7589	16.20	HCIB
Killarney	Roxbury Rd & Killarney Dr.	0019	HB210019EPD7589	21.20	HCIB
Killarney	Roxbury Rd & Killarney Dr.	0020	HB210020EPD7589	13.60	HCIB
Killarney	139 Killarney Dr.	0021	HB210021EPD7589	14.00	HCIB
Killarney	139 Killarney Dr.	0022	HB210022EPD7589	19.00	HCIB
Killarney	139 Killarney Dr.	0023	HB210023EPD7589	14.80	HCIB
Killarney	139 Killarney Dr.	0024	HB210024EPD7589	14.80	HCIB
Killarney	139 Killarney Dr.	0025	HB210025EPD7589	14.80	HCIB
Killarney	Euston Rd & Killarney Dr.	0026	HB210026EPD7589	15.80	HCIB
Killarney	Euston Rd & Killarney Dr.	0027	HB210027EPD7589	14.80	HCIB
Killarney	Pelham Rd & Euston Rd.	0028	HB210028EPD7589	13.00	HCIB
Killarney	Pelham Rd & Euston Rd.	0029	HB210029EPD7589	19.00	HCIB
Killarney	Pelham Rd & Euston Rd.	0030	HB210030EPD7589	16.80	HCIB
Killarney	Pelham Rd & Euston Rd.	0031	HB210031EPD7589	13.40	HCIB
Killarney	420 Ololu Dr.	0032	HB210032EPD7589	13.40	HCIB
Killarney	450 Ololu Dr.	0033	HB210033EPD7589	10.00	HCIB
Killarney	511 Ololu Dr.	0034	HB210034EPD7589	12.00	HCIB
Killarney	511 Ololu Dr.	0035	HB210035EPD7589	12.00	HCIB

Lake LaGrange CIB Locations

Attachment I1

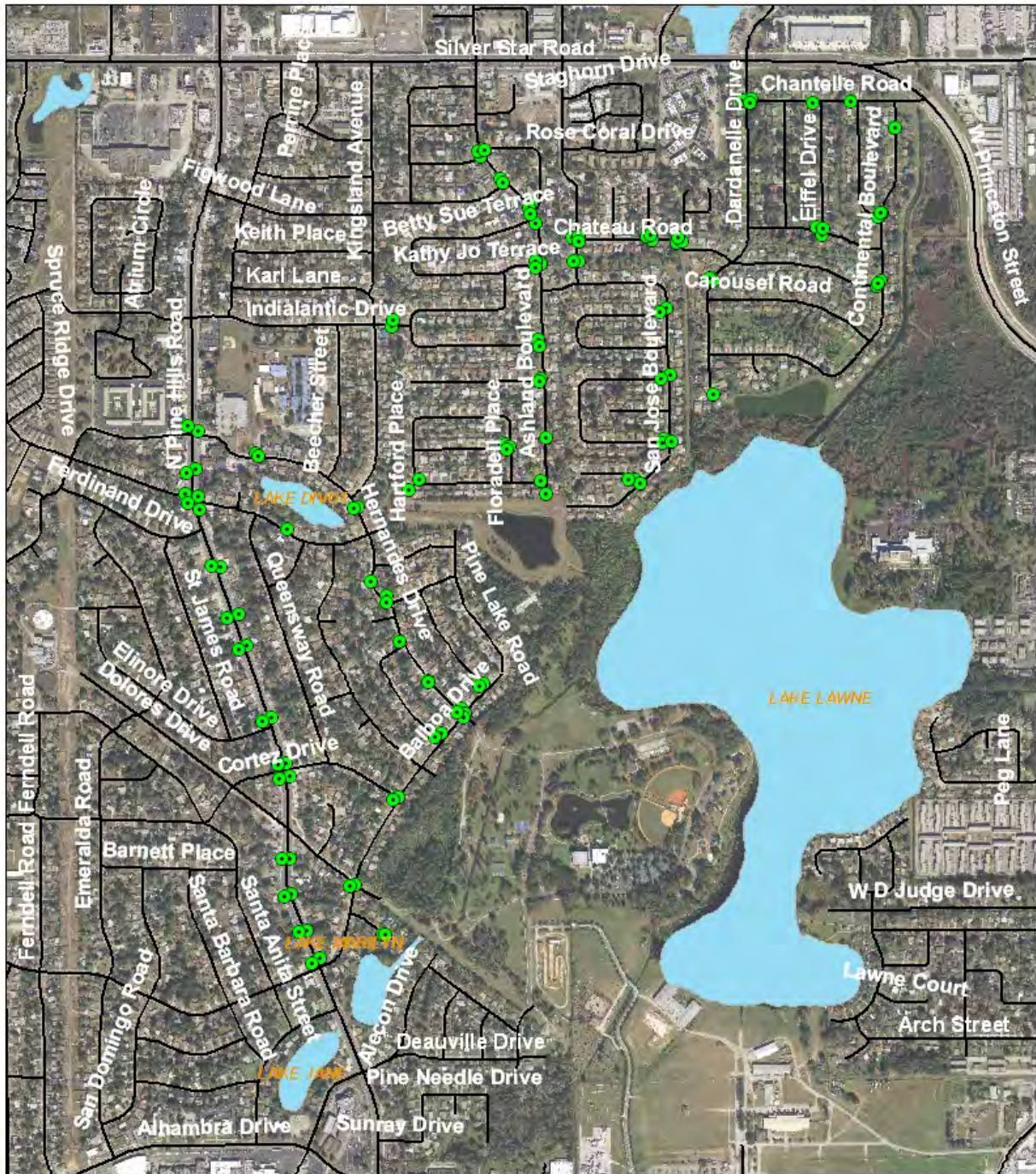


Attachment I2

Lake	Street	Basket No.	Suntree Tag ID	Basket Weight	Type
LaGrange	Across from 2907 Conway Gardens	0001	BC180001EPD0088	20.0	GISB
LaGrange	3404 Monteen Dr	0002	BC180002EPD0088	13.0	HCCIB
LaGrange	3317 Monteen Dr	0003	BC180003EPD0088	16.0	HCCIB
LaGrange	3353 Lake Margaret Dr	0004	BC180004EPD0088	31.0	GISB
LaGrange	Across from 3353 Lake Margaret	0005	BC180005EPD0088	26.0	GISB
LaGrange	3035 Dawley Ave	0006	BC180006EPD0088	20.0	HCCIB
LaGrange	3036 Dawley Ave	0007	BC180007EPD0088	15.0	HCCIB

Lake Lawne CIB Locations

Attachment J1



0 0.075 0.15 0.3 0.45 Miles

Attachment J2

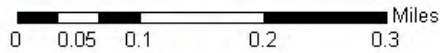
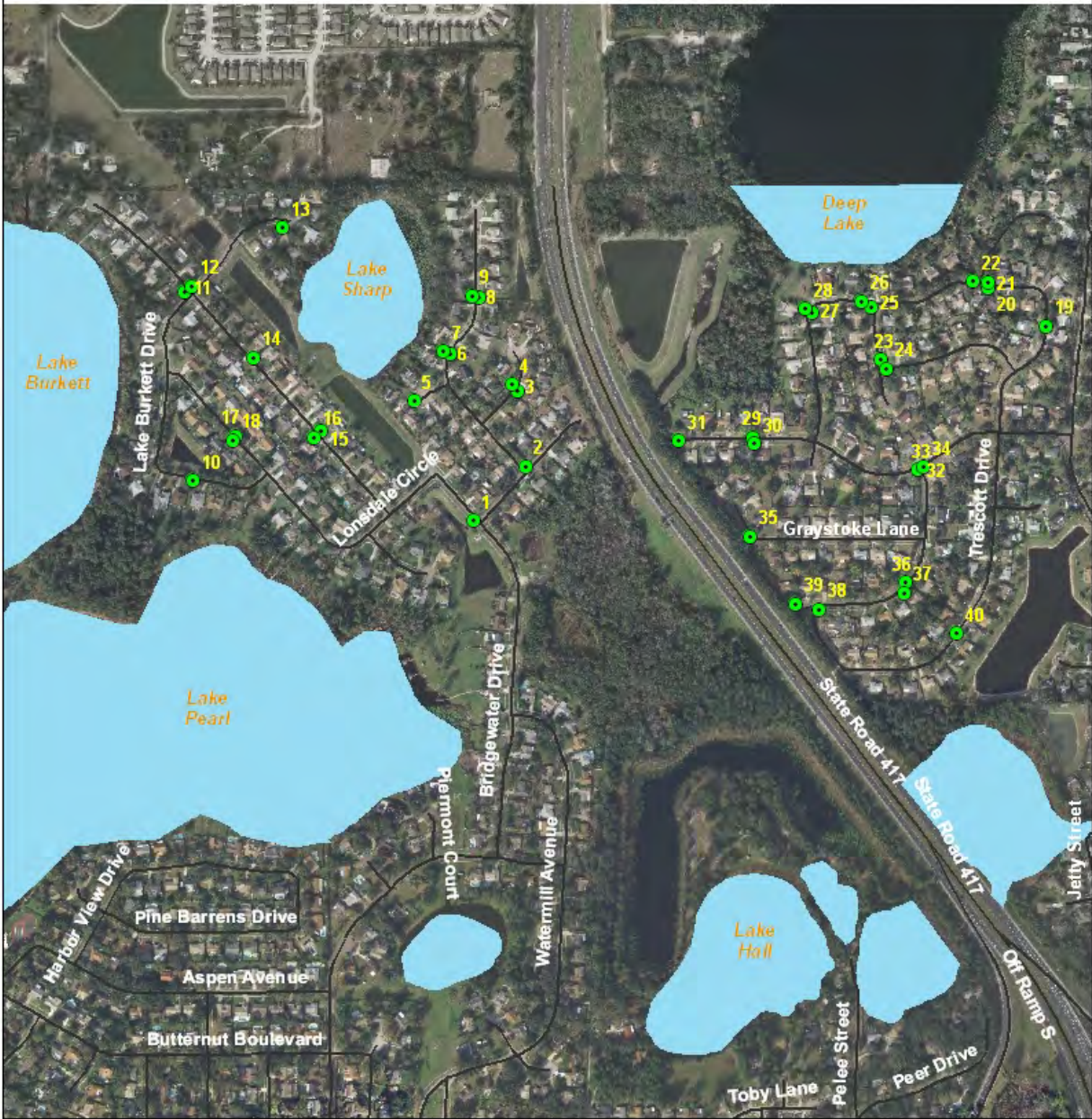
Lake	Street	Basket No.	Suntree Tag ID.	Basket Weight	Type
Lawne	Dardanelle Dr. & Chantelle Rd.	1	LW100001EPD8282	15.40	HCIB
Lawne	Dardanelle Dr. & Chantelle Rd.	2	LW100002EPD8282	18.40	HCIB
Lawne	Dardanelle Dr. & Chantelle Rd.	3	LW100003EPD8282	15.40	HCIB
Lawne	Chantelle Rd. & Eiffel Dr.	4	LW100004EPD8282	27.20	HCIB
Lawne	Chantelle Rd. & Savoy Dr.	5	LW100005EPD8282	27.20	HCIB
Lawne	2412 Continental Blvd.	6	LW100006EPD8282	27.20	HCIB
Lawne	Continental Blvd. & Savoy Dr.	7	LW100007EPD8282	27.20	HCIB
Lawne	Continental Blvd. & Savoy Dr.	8	LW100008EPD8282	27.20	HCIB
Lawne	Continental Blvd. & Savoy Dr.	9	LW100009EPD8282	20.40	HCIB
Lawne	Brittany Rd. & Eiffel Dr.			27.20	HCIB
Lawne	Brittany Rd. & Eiffel Dr.	10	LW100010EPD8282	27.20	HCIB
Lawne	Brittany Rd. & Eiffel Dr.	11	LW100011EPD8282	27.20	HCIB
Lawne	Continental Blve. & Chateau Rd.	12	LW100012EPD8282	27.20	HCIB
Lawne	Continental Blve. & Chateau Rd.	13	LW100013EPD8282	27.20	HCIB
Lawne	Continental Blve. & Chateau Rd.	14	LW100014EPD8282	20.40	HCIB
Lawne	1908 Dardanelle Dr.	15	LW100015EPD8282	27.20	HCIB
Lawne	2137 Dardanelle Dr.	16	LW100016EPD8282	20.40	HCIB
Lawne	2137 Dardanelle Dr.	17	LW100017EPD8282	20.40	HCIB
Lawne	Chateau Rd. & Nantes Ct.	18	LW100018EPD8282	20.40	HCIB
Lawne	Chateau Rd. & Nantes Ct.	19	LW100019EPD8282	15.00	HCIB
Lawne	Chateau Rd. & Nantes Ct.	20	LW100020EPD8282	27.20	HCIB
Lawne	Strasbourg Ct. & Chateau Rd.	21	LW100021EPD8282	20.40	HCIB
Lawne	Strasbourg Ct. & Chateau Rd.	22	LW100022EPD8282	20.40	HCIB
Lawne	Strasbourg Ct. & Chateau Rd.	23	LW100023EPD8282	27.20	HCIB
Lawne	Le Havre Blvd. & Chateau Rd.	24	LW100024EPD8282	20.40	HCIB
Lawne	Le Havre Blvd. & Chateau Rd.	25	LW100025EPD8282	20.40	HCIB
Lawne	Le Havre Blvd. & Chateau Rd.	26	LW100026EPD8282	20.40	HCIB
Lawne	2158 Le Havre Blvd.	27	LW100027EPD8282	24.20	HCIB
Lawne	2158 Le Havre Blvd.	28	LW100028EPD8282	27.20	HCIB
Lawne	San Jose Blvd. & Frisco Cir.	29	LW100029EPD8282	13.60	HCIB
Lawne	San Jose Blvd. & Frisco Cir.	30	LW100030EPD8282	20.40	HCIB
Lawne	San Sebastian Cir. & San Jose Blvd.	31	LW100031EPD8284	27.20	HCIB
Lawne	San Sebastian Cir. & San Jose Blvd.	32	LW100032EPD8284	27.20	HCIB
Lawne	San Sebastian Cir. & San Jose Blvd.	33	LW100033EPD8284	27.20	HCIB
Lawne	San Sebastian Cir. & San Jose Blvd.	34	LW100034EPD8284	20.40	HCIB
Lawne	San Sebastian Cir. & San Jose Blvd.	35	LW100035EPD8284	15.00	HCIB
Lawne	San Sebastian Cir. & San Jose Blvd.			20.40	HCIB
Lawne	Cal Ct. & San Jose Blvd.	36	LW100036EPD8284	27.00	HCIB
Lawne	Cal Ct. & San Jose Blvd.	37	LW100037EPD8284	27.00	HCIB
Lawne	Cal Ct. & San Jose Blvd.	38	LW100038EPD8284	27.00	HCIB
Lawne	Ashland Blvd. & Elderwood Ln.	39	LW100039EPD8284	13.00	HCIB

Lake	Street	Basket No.	Suntree Tag ID.	Basket Weight	Type
Lawne	Ashland Blvd. & Elderwood Ln.	40	LW100040EPD8284	13.00	HCIB
Lawne	Ashland Blvd. & Elderwood Ln.	41	LW100041EPD8284	13.00	HCIB
Lawne	Figwood Ln. & Ashland Blvd	42	LW100042EPD8284	21.00	HCIB
Lawne	Figwood Ln. & Ashland Blvd	43	LW100043EPD8284	27.40	HCIB
Lawne	Ashland Blvd. & Elderwood Ln.	44	LW100044EPD8284	27.40	HCIB
Lawne	Betty Sue Terr. & Ashland Blvd.	45	LW100045EPD8284	18.00	HCIB
Lawne	Betty Sue Terr. & Ashland Blvd.	46	LW100046EPD8284	21.00	HCIB
Lawne	Ashland Blvd. & Elderwood Ln.	47	LW100047EPD8284	18.00	HCIB
Lawne	Kathy Jo Terr. & Ashland Blvd.	48	LW100048EPDXXXX	27.00	HCIB
Lawne	Kathy Jo Terr. & Ashland Blvd.	49	LW100049EPD8284	21.00	HCIB
Lawne	Kathy Jo Terr. & Ashland Blvd.				HCIB
Lawne	Indialantic Dr. & Ashland Blvd.	50	LW100050EPD8284	21.00	HCIB
Lawne	Indialantic Dr. & Ashland Blvd.	51	LW100051EPD8284	21.00	HCIB
Lawne	Judy Ann Ct. & Ashland Blvd.	52	LW100052EPD8284	27.00	HCIB
Lawne	Judy Ann Ct. & Ashland Blvd.	53	LW100053EPD8284	21.00	HCIB
Lawne	2090 Ashland Blvd.	54	LW100054EPD8284	31.40	HCIB
Lawne	Victory Dr. & Ashland Blvd.	55	LW100055EPD8284	21.00	HCIB
Lawne	Victory Dr. & Ashland Blvd.	56	LW100056EPD8284	21.00	HCIB
Lawne	Hartford Pl. & Victory Dr.	57	LW100057EPD8284	21.00	HCIB
Lawne	Hartford Pl. & Victory Dr.	58	LW100058EPD8284	21.00	HCIB
Lawne	Hernandes Rd & Pine Hills Rd (W)	59	LW100059EPD8951	42.60	P-5
Lawne	Hernandes Rd & Pine Hills Rd (E)	60	LW100060EPD8951	42.40	P5
Lawne	1302 Pine Hills Road	61	LW100061EPD8951	42.40	P-5
Lawne	Pine Hills Community Church	62	LW100062EPD8951	42.60	P-5
Lawne	2509 Golf Club Parkway	63	LW100063EPD8951	42.90	P-5
Lawne	1301 Golf Club Parkway	64	LW100064EPD8951	42.70	P-5
Lawne	Gulf Club Rd & Pine Hills Rd (W)	65	LW100065EPDXXXX	42.50	P-5
Lawne	Golf Club Rd & Pine Hills Rd (E)	66	LW100066EPD8951	42.90	P-5
Lawne	1246 Pine Hills Rd	67	LW100067EPDXXXX	42.70	P-5
Lawne	1249 Pine Hills Rd	68	LW100068EPD8951	42.30	P-5
Lawne	1234 Pine Hills Rd	69	LW100069EPDXXXX	42.80	P-5
Lawne	1239 Pine Hills Rd	70	LW100070EPD8951	42.60	P-5
Lawne	1226 Pine Hills Rd	71	LW100071EPD8951	42.60	P-5
Lawne	1231 Pine Hills Rd	72	LW100072EPD8951	42.50	P-5
Lawne	Elinore Rd & Pine Hills Rd (W)	73	LW100073EPD8951	42.70	P-5
Lawne	Elnore Rd & Pine Hills Rd (E)	74	LW100074EPDXXXX	43.10	P-5
Lawne	Cortez Rd & Pine Hills Rd (W)	75	LW100075EPDXXXX	42.60	P-5
Lawne	Cortez Rd & Pine Hills Rd (E)	76	LW100076EPDXXXX	42.50	P-5
Lawne	1112 Pine Hills Rd	77	LW100077EPD8951	42.40	P-5
Lawne	1121 Pine Hills Rd	78	LW100078EPDXXXX	42.70	P-5
Lawne	Pine Hills Rd (SW of Dolores Dr.)	79	LW100079EPDXXXX	42.50	P-5
Lawne	Pine Hills Rd (SE of Dolores Dr.)	80	LW100080EPDXXXX	42.30	P-5
Lawne	1024 Pine Hills Rd	81	LW100081EPD8951	42.10	P-5

Lake	Street	Basket No.	Suntree Tag ID.	Basket Weight	Type
Lawne	1023 Pine Hills Rd	82	LW100082EPDXXXX	42.00	P-5
Lawne	1010 Pine Hills Rd	83	LW100083EPD8951	42.80	P-5
Lawne	1009 Pine Hills Rd	84	LW100084EPDXXXX	43.20	P-5
Lawne	Balboa Rd & Pine Hills Rd (W)	85	LW100085EPD8951	42.90	P-5
Lawne	Balboa Rd & Pine Hills Rd (E)	86	LW100086EPDXXXX	45.80	P-5
Lawne	Floradell Pl. & Grovemont Pl.	87	LW100087EPD8285	18.00	HCIB
Lawne	Floradell Pl. & Grovemont Pl.	88	LW100088EPD8285	20.00	HCIB
Lawne	Floradell Pl. & Grovemont Pl.	89	LW100089EPD8285	22.00	HCIB
Lawne	4876 Indialantic Dr.	90	LW100090EPD8285	17.40	HCIB
Lawne	4876 Indialantic Dr.	91	LW100091EPD8285	23.20	HCIB
Lawne	5084 Hernandes Dr.	92	LW100092EPD8285	20.40	HCIB
Lawne	5084 Hernandes Dr.	93	LW100093EPD8285	17.00	HCIB
Lawne	4910 Hernandes Dr.	94	LW100094EPD8285	23.80	HCIB
Lawne	4910 Hernandes Dr.	95	LW100095EPD8285	24.40	HCIB
Lawne	5008 Golf Club Pkwy.	96	LW100096EPD8285	12.20	HCIB
Lawne	1636 Hernandes Dr.	97	LW100097EPD8285	24.80	HCIB
Lawne	Hernandes Dr. & Cedarview Rd.	98	LW100098EPD8285	21.60	HCIB
Lawne	Hernandes Dr. & Cedarview Rd.	99	LW100099EPD8285	25.60	HCIB
Lawne	Abbeyville Rd. & Hernandes Dr.	100	LW100100EPD8285	22.20	HCIB
Lawne	1404 Hernandes Dr.	101	LW100101EPD8285	21.00	HCIB
Lawne	1404 Hernandes Dr.	102	LW100102EPD8285	29.20	HCIB
Lawne	Balboa Dr. & Hernandes Dr	103	LW100103EPD8285	24.00	HCIB
Lawne	Balboa Dr. & Hernandes Dr	104	LW100104EPD8285	18.40	HCIB
Lawne	Balboa Dr. & Hernandes Dr	105	LW100105EPD8285	15.00	HCIB
Lawne	Balboa Dr. & Hernandes Dr	106	LW100106EPD8285	21.20	HCIB
Lawne	Sunridge Rd. & Balboa Dr.	107	LW100107EPD8285	29.40	HCIB
Lawne	Sunridge Rd. & Balboa Dr.	108	LW100108EPD8285	27.20	HCIB
Lawne	Balboa Dr. & Abbeyville Rd	109	LW100109EPD8285	22.40	HCIB
Lawne	Balboa Dr. & Abbeyville Rd	110	LW100110EPD8285	21.50	HCIB
Lawne	Cortez Dr. & Balboa Dr.	111	LW100111EPD8285	11.00	HCIB
Lawne	Cortez Dr. & Balboa Dr.	112	LW100112EPD8285	25.00	HCIB
Lawne	Delores Dr. & Balboa Dr.	113	LW100113EPD8285	18.20	HCIB
Lawne	Delores Dr. & Balboa Dr.	114	LW100114EPD8285	16.20	HCIB
Lawne	4912 Bristol Ct.	115	LW100115EPD8285	15.60	HCIB
Lawne	4912 Bristol Ct.	116	LW100116EPDXXXX	17.80	HCIB

Martha-Burkett CIB Locations

Attachment K1



Attachment K2

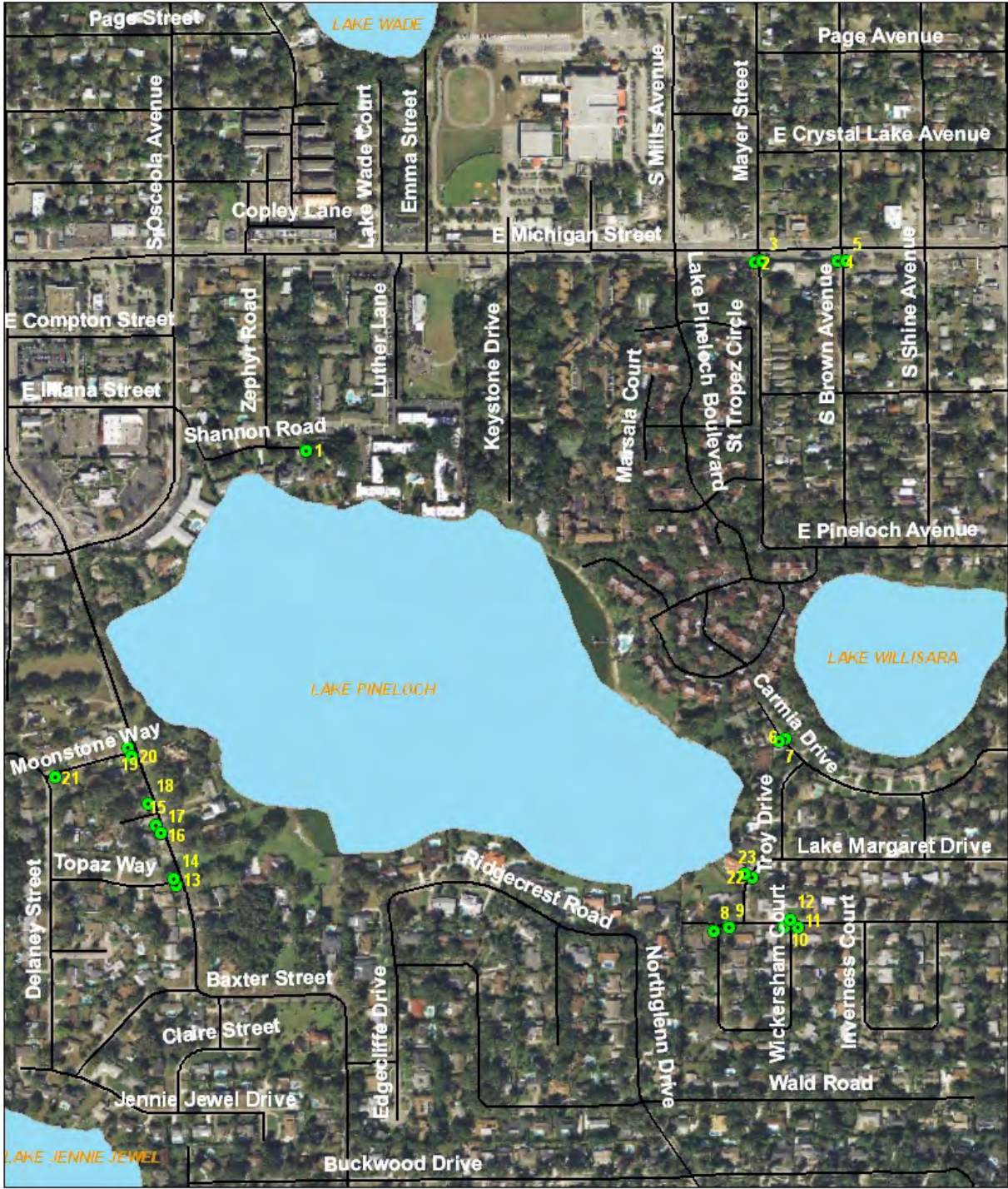
Lake	Street	New Basket No.	Suntree Tag ID.	Basket Weight	Type
Martha-Burkett	West side of Bridgewater Dr & Whittingham	0001	HB040001EPD9853	16.0	HCCIB
Martha-Burkett	North corner of Gorham Ave & Whittingham	0002	HB040002EPD9853	16.0	HCCIB
Martha-Burkett	9322 Dorset Drive	0003	HB040003EPD9853	20.0	HCCIB
Martha-Burkett	9321 Dorset Drive	0004	HB040004EPD9853	20.0	HCCIB
Martha-Burkett	9201 Jarvi Ct	0005	HB040005EPD9853	16.0	HCCIB
Martha-Burkett	Across from 4810 Gorham Ave	0006	HB040006EPD9853	16.0	HCCIB
Martha-Burkett	4810 Gorham Ave	0007	HB040007EPD9853	16.0	HCCIB
Martha-Burkett	4833 Gorham Ave	0008	HB040008EPD9853	24.0	HCCIB
Martha-Burkett	4832 Gorham Ave	0009	HB040009EPD9853	24.0	HCCIB
Martha-Burkett	9154 Lake Burkett Dr	0010	HB040010EPD9853	20.0	HCCIB
Martha-Burkett	West corner of Lake Burkett Dr & Lake Sharp Ct	0011	HB040011EPD9853	24.0	HCCIB
Martha-Burkett	East corner of Lake Burkett Dr & Lake Sharp Cr	0012	HB040012EPD9853	20.0	HCCIB
Martha-Burkett	9290 Lake Sharp Ct	0013	HB040013EPD9853	20.0	HCCIB
Martha-Burkett	4815 Lake Sharp Dr	0014	HB040014EPD9853	16.0	HCCIB
Martha-Burkett	4737 Lake Sharp Dr	0015	HB040015EPD9853	16.0	HCCIB
Martha-Burkett	4738 Lake Sharp Dr	0016	HB040016EPD9853	16.0	HCCIB
Martha-Burkett	4811 Lonsdale Cr	0017	HB040017EPD9853	16.0	HCCIB
Martha-Burkett	4813 Lonsdale Cir	0018	HB040018EPD9853	16.0	HCCIB

Lake	Street	New Basket No.	Suntree Tag ID.	Basket Weight	Type
Martha-Burkett	4735 Dunbarton Dr	0019	HB040019EPD9853	16.0	HCCIB
Martha-Burkett	4801 Dunbarton Dr	0020	HB040020EPD9853	16.0	HCCIB
Martha-Burkett	Across from 4801 Dunbarton Dr	0021	HB040021EPD9853	16.0	HCCIB
Martha-Burkett	East corner of Dunbarton & Stahl	0022	HB040022EPD9853	20.0	HCCIB
Martha-Burkett	North side of Fitzsimmons Dr & Leacock	0023	HB040023EPD9853	16.0	HCCIB
Martha-Burkett	South side of Fitzsimmons Dr & Leacock	0024	HB040024EPD9853	16.0	HCCIB
Martha-Burkett	West corner of Leacock & Dunbarton	0025	HB040025EPD9853	24.0	HCCIB
Martha-Burkett	4768 Dunbarton Dr	0026	HB040026EPD9853	20.0	HCCIB
Martha-Burkett	4743 Dunbarton Dr	0027	HB040027EPD9853	16.0	HCCIB
Martha-Burkett	4744 Dunbarton Dr	0028	HB040028EPD9853	16.0	HCCIB
Martha-Burkett	9437 Holbrook Dr	0029	HB040029EPD9853	16.0	HCCIB
Martha-Burkett	9430 Holbrook Dr	0030	HB040030EPD9853	20.0	HCCIB
Martha-Burkett	9406 Holbrook Dr	0031	HB040031EPD9853	20.0	HCCIB
Martha-Burkett	West corner of Cannon & Holbrook	0032	HB040032EPD9853	16.0	HCCIB
Martha-Burkett	9541 Holbrook	0033	HB040033EPD9853	16.0	HCCIB
Martha-Burkett	East corner of Cannon & Holbrook	0034	HB040034EPD9853	20.0	HCCIB
Martha-Burkett	Across from 4503 Appleby Ct	0035	HB040035EPD9853	20.0	HCCIB
Martha-Burkett	Across from 9504 Cannon Dr	0036	HB040036EPD9853	20.0	HCCIB
Martha-Burkett	9506 Cannon Dr	0037	HB040037EPD9853	24.0	HCCIB

Lake	Street	New Basket No.	Suntree Tag ID.	Basket Weight	Type
Martha-Burkett	Across from 9425 Cannon Dr	0038	HB040038EPD9853	24.0	HCCIB
Martha-Burkett	9409 Cannon Dr	0039	HB040039EPD9853	24.0	HCCIB
Martha-Burkett	4441 Trescott Dr	0040	HB040040EPD9853	24.0	HCCIB

Pineloch CIB Locations

Attachment L1

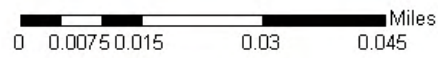
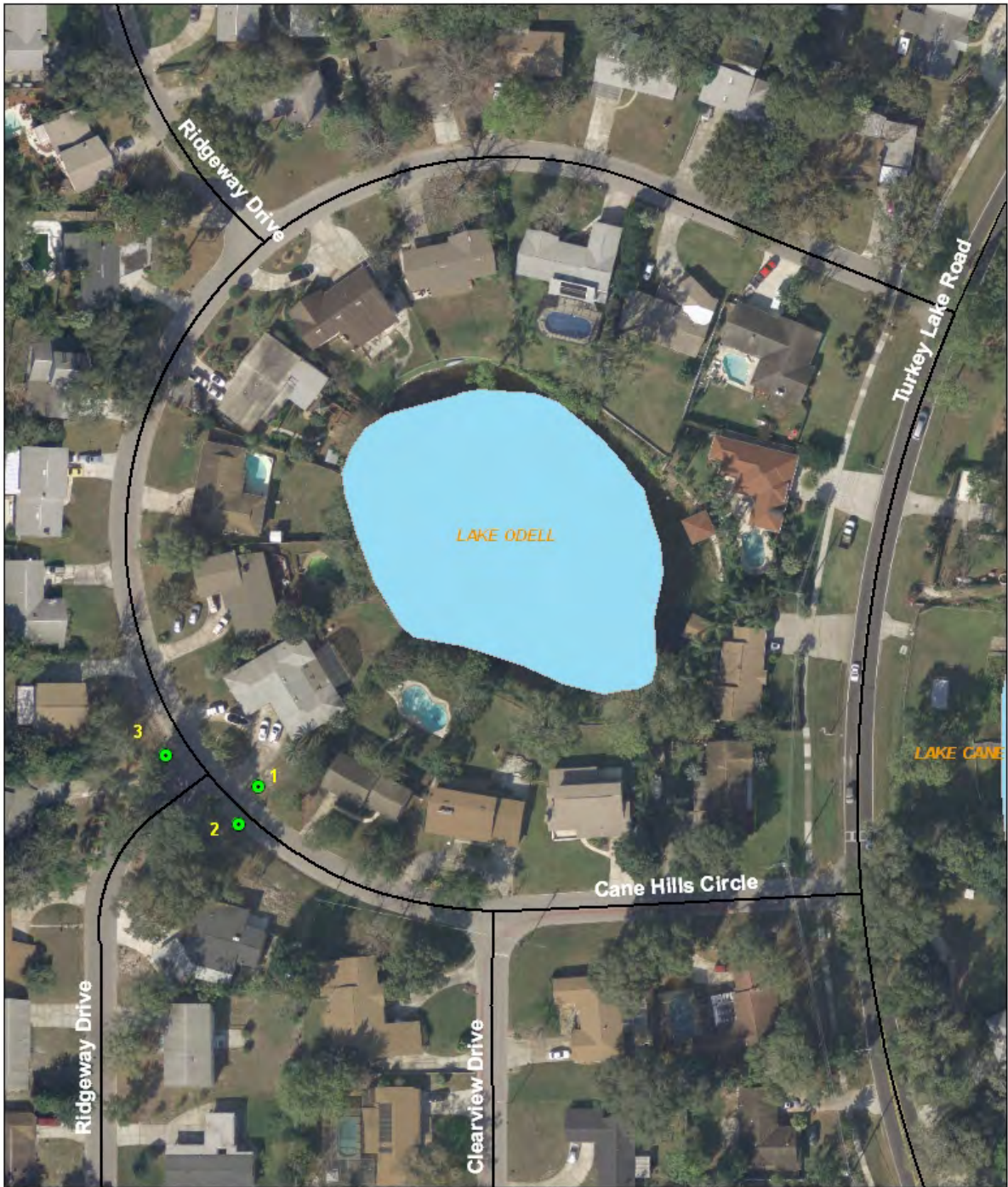


Attachment L2

Lake	Street	New Basket No.	Suntree Tag ID.	Basket Weight	Type
Pineloch	600 Shannon Road	0001	BC220001EPD7197	13.60	GISB-P
Pineloch	Mayer St & Michigan St	0002	BC220002EPD7197	40.00	GISB-P
Pineloch	Mayer St & Michigan St	0003	BC220003EPD7197	40.00	GISB-P
Pineloch	Brown Ave & Michigan St	0004	BC220004EPD7197	36.00	GISB-P
Pineloch	Brown Ave & Michigan St	0005	BC220005EPD7197	42.00	HCIB
Pineloch	2918 Carmia Drive	0006	BC220006EPD7197	24.00	HCIB
Pineloch	2918 Carmia Drive	0007	BC220007EPD7197	24.00	HCIB
Pineloch	Wickersham Ct & Ridgecrest Road	0008	BC220008EPD7197	20.00	HCIB
Pineloch	Wickersham Ct & Ridgecrest Road	0009	BC220009EPD7197	20.00	HCIB
Pineloch	3261 Wickersham Court	0010	BC220010EPD7197	18.00	HCIB
Pineloch	3261 Wickersham Court	0011	BC220011EPD7197	22.20	HCIB
Pineloch	3261 Wickersham Court	0012	BC220012EPD7197	22.20	HCIB
Pineloch	Topaz Way & Osceola St	0013	BC220013EPD7197	15.00	HCIB
Pineloch	Topaz Way & Osceola St	0014	BC220014EPD7197	15.00	HCIB
Pineloch	Peridot Ct & Osceola St	0015	BC220015EPD7197	22.00	HCIB
Pineloch	3021 Osceola Street	0016	BC220016EPD7197	19.00	GISB
Pineloch	3021 Osceola Street	0017	BC220017EPD7197	19.00	GISB
Pineloch	Peridot Ct & Osceola St	0018	BC220018EPD7197	22.00	HCIB
Pineloch	Moonstone Way & Osceola Avenue	0019	BC220019EPD7197	22.00	HCIB
Pineloch	Moonstone Way & Osceola Avenue	0020	BC220020EPD7197	22.00	HCIB
Pineloch	Moonstone Way & Osceola Avenue	0021	BC220021EPD7197	22.00	HCIB
Pineloch	3107 Troy Drive	0022	BC220022EPD9690	24.60	HCIB
Pineloch	3107 Troy Drive	0023	BC220023EPD9690	25.40	HCIB

Lake Odell CIB Locations

Attachment M1

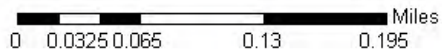
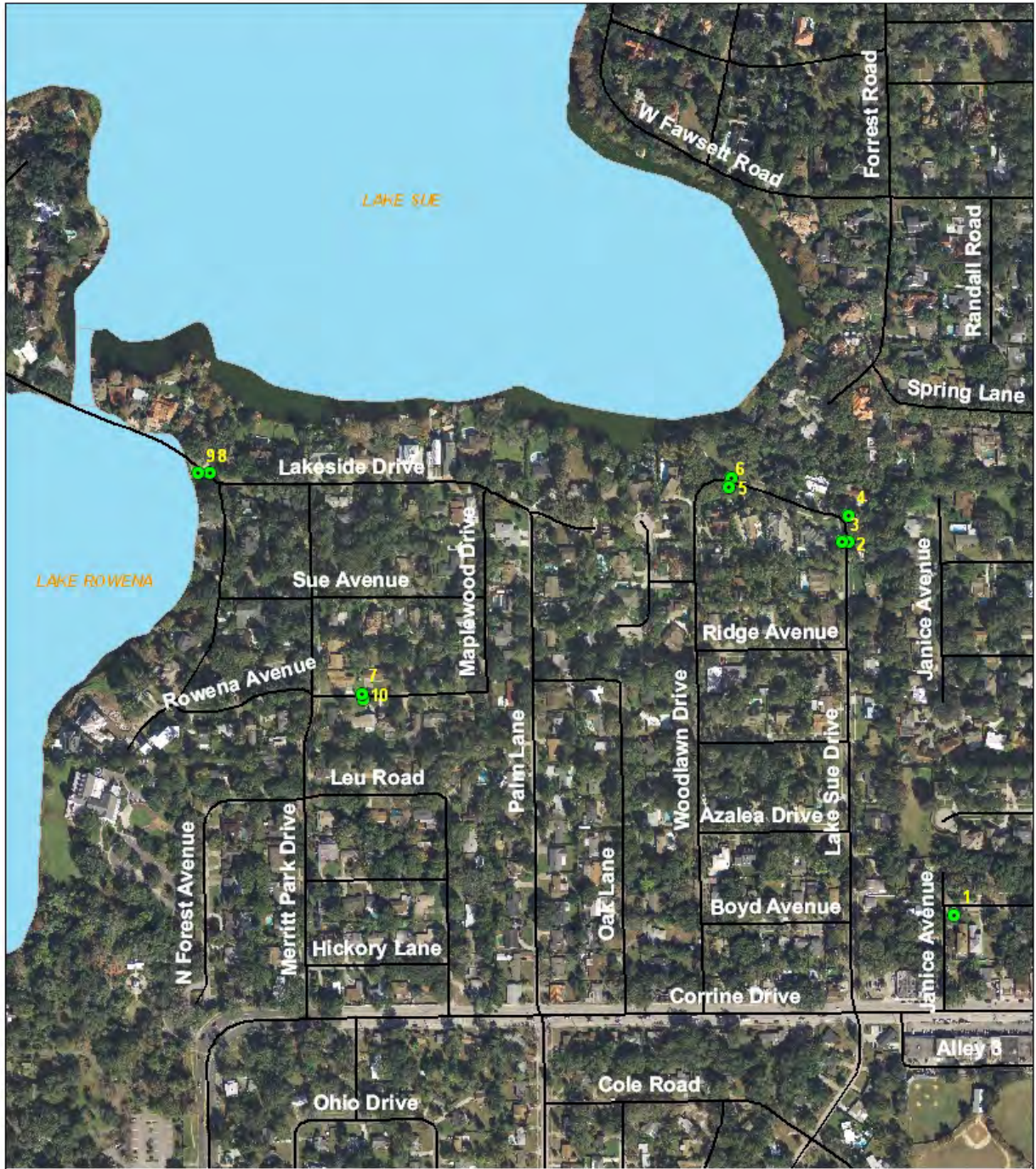


Attachment M2

Lake	Street	Basket No.	Tag Identificaiton No.	Basket Weight	Type
Odell	Across from 7217 Cane Hills Cir	1	HB360001EPD7059	32.00	HCIB
Odell	7217 Cane Hills Cir	2	HB360002EPD7059		HCIB
Odell	Cane Hills Cir & Ridgeway Dr	3	HB360003EPD7059	19.60	HCIB

Lake Sue CIB Locations

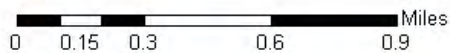
Attachment N1



Attachment N2

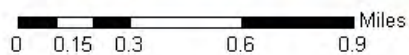
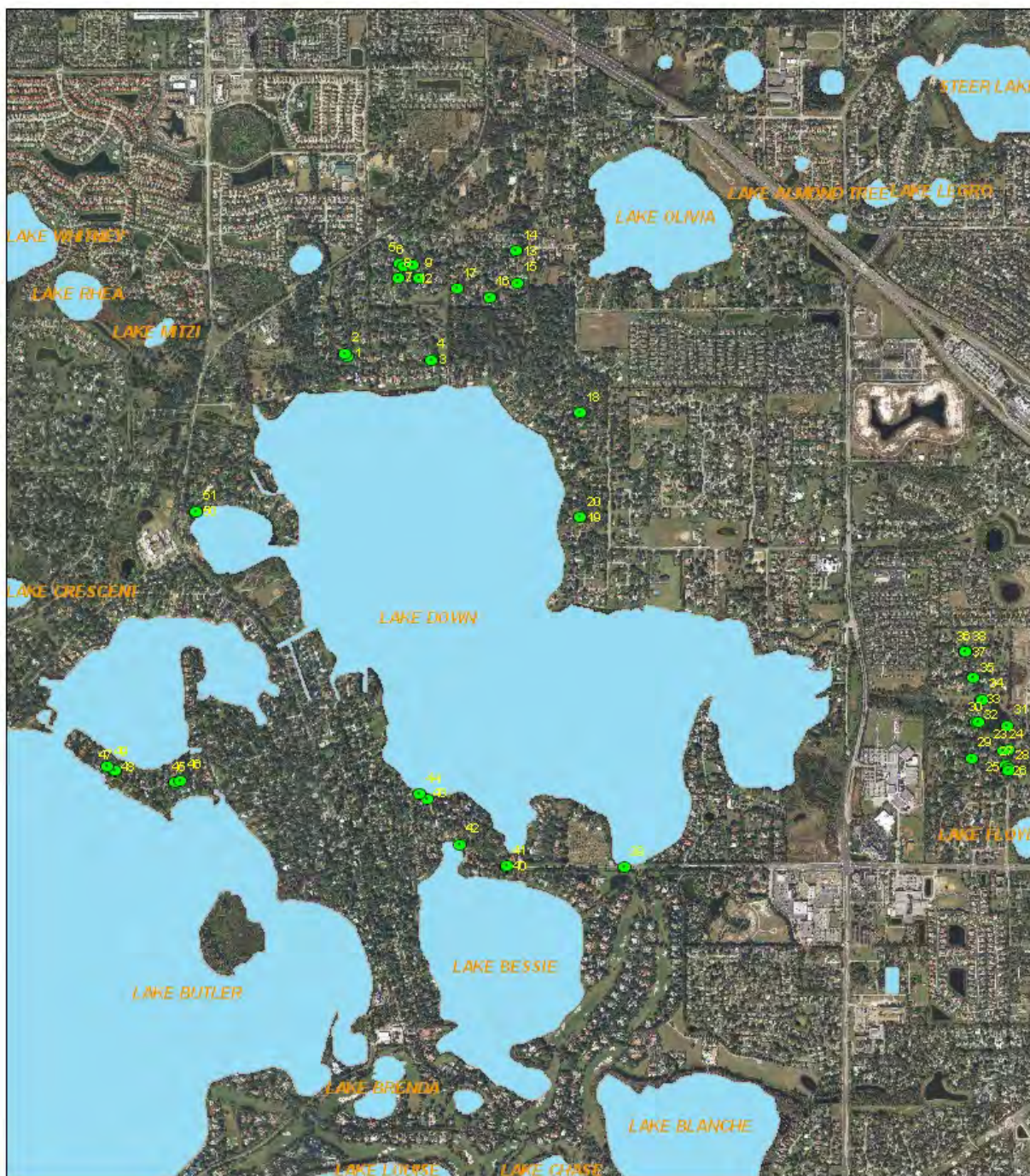
Lake	Street	New Basket No.	Suntree Tag ID	Basket Weight	Type
Sue	Janice Ave & Marble	1	HB360001EPD7059	10.00	HCIB
Sue	2427 Lake Sue	2	HB360002EPD7059	33.40	HCIB
Sue	2427 Lake Sue	3	HB360003EPD7059	33.40	GISB
Sue	2427 Lake Sue	4	HB360004EPD7059	33.40	GISB
Sue	2200 Woodlawn Dr.	5	HB360005EPD7059	23.40	GISB
Sue	2059 Woodlawn Dr.	6	HB360006EPD7059	12.60	GISB
Sue	2214 Rowena Ave.	10	HB360010EPD7059	22.80	GISB
Sue	2214 Rowena Ave.	7	HB360007EPD7059	44.40	GISB
Sue	2111 Lakeside Dr.	8	HB360008EPD7059	13.60	GISB
Sue	2111 Lakeside Dr.	9	HB360009EPD7059	20.60	HCIB

Windermere: Lake Tibet-Butler CIB Locations Attachment O1



Windermere: Lake Down CIB Locations

Attachment O2



Attachment O3

Lake	Street	Basket No.	Suntree Tag ID.	Basket Weight	Type of Basket
Tibet-Butler	5558 Brookline Drive	1	CC180001EPD7056	48.00	GISB
Tibet-Butler	5558 Brookline Drive	2	CC180002EPD7056	48.00	GISB
Tibet-Butler	5582 Brookline Drive	3	CC180003EPD7056	48.00	GISB
Tibet-Butler	5582 Brookline Drive	4	CC180004EPD7056	48.00	GISB
Tibet-Butler	6206 Dartmoor Court	5	CC180005EPD7056	27.40	HCIB
Tibet-Butler	6207 Dartmoor Court	6	CC180006EPD7056	27.40	HCIB
Tibet-Butler	8823 Bay Hill Blvd.	7	CC180007EPD7056	20.00	HCIB
Tibet-Butler	8823 Bay Hill Blvd.	8	CC180008EPD7056	20.00	HCIB
Tibet-Butler	6318 Marina Drive	9	CC180009EPD7056	20.00	HCIB
Tibet-Butler	8935 Tibet Bay Drive	10	CC180010EPD7056	20.00	HCIB
Tibet-Butler	9090 Bay Hill Blvd	11	CC180011EPD7056	35.20	GISB
Tibet-Butler	9090 Bay Hill Blvd	12	CC180012EPD7056	20.00	HCIB
Tibet-Butler	9100 Bay Hill Blvd	13	CC180013EPD7056	27.20	HCIB
Tibet-Butler	9100 Bay Hill Blvd	14	CC180014EPD7056	27.20	HCIB
Tibet-Butler	8753 Bay Cove Court	15	CC180015EPD7056	27.20	HCIB
Tibet-Butler	8952 Bay Cove Court	16	CC180016EPD7056	27.20	HCIB
Tibet-Butler	Bay Hill Blvd & Ridge Pine Tr	17	CC180017EPD7056	19.40	HCIB
Tibet-Butler	Bay Hill Blvd & Ridge Pine Tr	18	CC180018EPD7056	20.60	HCIB
Tibet-Butler	Bay Hill Blvd & Ridge Pine Tr	19	CC180019EPD7056	27.20	HCIB

Lake	Street	Basket No.	Suntree Tag ID.	Basket Weight	Type of Basket
Tibet-Butler	Easterling Dr & Cypress Cove	20	CC180020EPD7056	27.20	HCIB
Tibet-Butler	9020 Easterling Drive	21	CC180021EPD7056	20.20	HCIB
Tibet-Butler	9035 Easterling Drive	22	CC180022EPD7056	27.20	HCIB
Tibet-Butler	9035 Easterling Drive	23	CC180023EPD7056	27.20	HCIB
Tibet-Butler	9015 Easterline Drive	24	CC180024EPD7056	27.20	HCIB
Tibet-Butler	9215 Cypress Cove	25	CC180025EPD7056	27.20	HCIB
Tibet-Butler	9215 Cypress Cove	26	CC180026EPD7056	27.20	HCIB
Tibet-Butler	8998 Islesworth Court	27	CC180027EPD7056	27.20	HCIB
Tibet-Butler	9025 Crichton Wood Avenue	28	CC180028EPD7056	21.20	HCIB
Tibet-Butler	9024 Crichton Wood Avenue	29	CC180029EPD7056	21.20	HCIB
Tibet-Butler	Masters Bld & Houston Place (south of)	30	CC180030EPD7056	27.20	HCIB
Tibet-Butler	Masters Blvd & Houston Place (south of)	31	CC180031EPD7056	27.20	HCIB
Tibet-Butler	Masters Blvd & Houston Place	32	CC180032EPD7056	27.20	HCIB
Tibet-Butler	Masters Blvd & Houston Place	33	CC180033EPD7056	27.20	HCIB
Tibet-Butler	Masters Blvd & Houston Place	34	CC180034EPD7056	27.20	HCIB
Tibet-Butler	Masters Blvd & Hubbard Place	35	CC180035EPD7056	50.00	HCIB
Tibet-Butler	Masters Blvd & Hubbard Place	36	CC180036EPD7056	32.00	HCIB
Tibet-Butler	Master Blvd & Hubbard Place	37	CC180037EPD7056	43.20	HCIB
Tibet-Butler	Masters Blvd & Hubbard Place	38	CC180038EPD7056	43.20	HCIB
Tibet-Butler	Masters Blvd & Hubbard Place	39	CC180039EPD7056	43.20	HCIB
Tibet-Butler	6105 Masters Blvd	40	CC180040EPD7056	15.00	GISB

Lake	Street	Basket No.	Suntree Tag ID.	Basket Weight	Type of Basket
Tibet-Butler	6049 Pine Valley Drive	41	CC180041EPD7056	42.10	GISB
Tibet-Butler	6049 Pine Valley Drive	42	CC180042EPD7056	25.20	GISB
Tibet-Butler	5925 Masters Blvd	43	CC180043EPD7056	40.00	GISB
Tibet-Butler	5925 Masters Blvd	44	CC180044EPD7056	50.00	GISB
Tibet-Butler	5856 Masters Blvd	45	CC180045EPD7056	50.00	GISB
Tibet-Butler	5901 Masters Blvd	46	CC180046EPD7056	20.00	GISB
Tibet-Butler	5838 Masters Blvd	47	CC180047EPD7056	22.80	GISB
Tibet-Butler	6277 Indian Meadow Street	48	CC180048EPD7056	27.80	GISB
Tibet-Butler	6064 Masters Blvd	49	CC180049EPD7056	27.20	GISB
Tibet-Butler	6105 Masters Blvd	50	CC180050EPD7056	25.20	GISB
Tibet-Butler	8991 Houston Place	51	CC180051EPD7056	16.80	GISB
Tibet-Butler	9242 Cypress Cove	52	CC180052EPD7056	16.80	HCIB
Tibet-Butler	9314 Cypress Cove	53	CC180053EPD7056	16.80	HCIB
Tibet-Butler	9239 Cypress Cove	54	CC180054EPD7056	16.80	HCIB
Tibet-Butler	9327 Cypress Cove	55	CC180055EPD7056	16.80	HCIB
Tibet-Butler	Bentley Park Circle	56	CC180056EPD9693		HCIB
Tibet-Butler	Bentley Park Circle	57	CC180057EPD9693		HCIB
Tibet-Butler	Bentley Park Circle	58	CC180058EPD9693		HCIB
Tibet-Butler	Bentley Park Circle	59	CC180059EPD9693		HCIB
Tibet-Butler	Bentley Park Circle	60	CC180060EPD9693		HCIB
Tibet-Butler	1052 Trout Road	61	CC180061EPD0415		HCIB
Tibet-Butler	Corner of Trout & Sunset	62	CC180062EPD0415		HCIB

Lake	Street	Basket No.	Suntree Tag ID.	Basket Weight	Type of Basket
Tibet-Butler	Intersection of Sunset & Cypress	63	CC180063EPD0415		HCIB
Tibet-Butler	8904 Sunset Blvd	64	CC180064EPD0415		HCIB
Tibet-Butler	8903 Sunset Blvd	65	CC180065EPD0415		HCIB
Tibet-Butler	Across from 8929 Sunset	66	CC180066EPD0415		HCIB
Tibet-Butler	8929 Sunset Blvd	67	CC180067EPD0415		HCIB
Tibet-Butler	Across from 6169 Orange Hill	68	CC180068EPD0415		GISB
Tibet-Butler	8408 Lyric Ct	69	CC180069EPD0415		GISB
Tibet-Butler	8404 Arbor Gate Ct	70	CC180070EPD0415		GISB
Tibet-Butler	Corner of Indian Meadow & Rustic Gate	71	CC180071EPD0415		GISB
Tibet-Butler	6247 Indian Meadow St	72	CC180072EPD0415		GISB
Tibet-Butler	6208 Donegal	73	CC180073EPD0415		HCIB
Tibet-Butler	6203 Donegal	74	CC180074EPD0415		HCIB
Tibet-Butler	8412 Bay Spring	75	CC180075EPD0415		HCIB
Tibet-Butler	Across from 8412 Bay Spring	76	CC180076EPD0415		HCIB
Tibet-Butler	8430 Bay Spring Dr	77	CC180077EPD0415		HCIB
Tibet-Butler	Across from 8430 Bay Spring	78	CC180078EPD0415		HCIB
Tibet-Butler	5560 Shore Ct	79	CC180079EPD0415		GISB
Tibet-Butler	5537 Bay Side Dr	80	CC180080EPD0415		GISB
Tibet-Butler	5519 Bay side Dr	81	CC180081EPD0415		GISB
Tibet-Butler	9140 Brookline Dr	82	CC180082EPD0415		GISB
Tibet-Butler	Corner of Brookline & Bay Side	83	CC180083EPD0415		HCIB

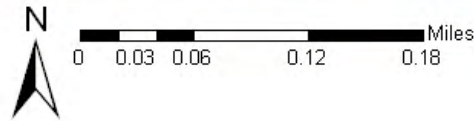
Lake	Street	Basket No.	Suntree Tag ID.	Basket Weight	Type of Basket
Tibet-Butler	5501 Bay Side Dr	84	CC180084EPD0415		GISB
Tibet-Butler	5506 Bay Side (left side)	85	CC180085EPD0415		GISB
Tibet-Butler	9130 Bay Side Ct	86	CC180086EPD0415		HCIB
Tibet-Butler	5427 Bay Side Dr	87	CC180087EPD0415		HCIB
Tibet-Butler	5415 Bay Side Dr	88	CC180088EPD0415		HCIB
Tibet-Butler	9169 North Bay Blvd	89	CC180089EPD0415		HCIB
Tibet-Butler	5404 Bay Side Dr	90	CC180090EPD0415		HCIB
Down	10304 Down Lake Dr	0001	CC09001EPD9830		GISB
Down	Across from 10304 Down Lake Dr	0002	CC09002EPD9830		GISB
Down	10461 Down Lakeview Ct	0003	CC09003EPD9830		GISB
Down	Across from 10461 Down Lakeview	0004	CC09004EPD9830		GISB
Down	1752 Windermeredown PI	0005	CC09005EPD9830		HCCIB
Down	Across from 1752 Windermeredown	0006	CC09006EPD9830		HCCIB
Down	10403 Birch Tree Lane	0007	CC09007EPD9830		HCCIB
Down	Across from 10403 Birch Tree La	0008	CC09008EPD9830		HCCIB
Down	1814 Windermeredown PI	0009	CC09009EPD9830		HCCIB
Down	Across from 1814 Windermeredown	0010	CC09010EPD9830		HCCIB
Down	1383 Birch Tree La	0011	CC09011EPD9830		HCCIB
Down	Across from 1383 Birch Tree La	0012	CC09012EPD9830		HCCIB
Down	1724 Woody Dr	0013	CC09013EPD9830		HCCIB
Down	1725 Woody Dr	0014	CC09014EPD9830		HCCIB

Lake	Street	Basket No.	Suntree Tag ID.	Basket Weight	Type of Basket
Down	1803 Woody Dr	0015	CC08015EPD9830		HCCIB
Down	1954 Maple Leaf Dr	0016	CC09016EPD9830		HCCIB
Down	Across from 1858 Maple Leaf Dr	0017	CC09017EPD9830		HCCIB
Down	2530 Holly Glen Cir	0018	CC09018EPD9830		GISB
Down	2814 Midsummer Dr	0019	CC09019EPD9830		GISB
Down	2823 Midsummer Dr	0020	CC09020EPD9830		GISB
Down	8449 Littleleaf Ct	0021	CC09021EPD0364		GISB
Down	Across from 8449 Littleleaf Ct	0022	CC09022EPD0364		GISB
Down	East of 8501 French Oak	0023	CC09023EPD0364		GISB
Down	North of 8501 French Oak	0024	CC09024EPD0364		GISB
Down	North of 8500 French Oak	0025	CC09025EPD0364		GISB
Down	North of 8460 French Oak	0026	CC09026EPD0364		GISB
Down	8500 French Oak	0027	CC09027EPD0364		GISB
Down	8460 French Oak	0028	CC09028EPD0364		GISB
Down	8533 French Oak	0029	CC09029EPD0364		GISB
Down	4350 Willow Park	0030	CC09030EPD0364		GISB
Down	4372 Willow Park	0031	CC09031EPD0364		GISB
Down	Across from 4350 Willow Park	0032	CC09032EPD0364		GISB
Down	Willow Park (west side)	0033	CC09033EPD0364		GISB
Down	Willow Park (east side)	0034	CC09034EPD0364		GISB
Down	8519 Sunset Willow	0035	CC09035EPD0364		GISB

Lake	Street	Basket No.	Suntree Tag ID.	Basket Weight	Type of Basket
Down	8532 Willow Wish	0036	CC09036EPD0364		GISB
Down	4232 Willow Park	0037	CC09037EPD0364		GISB
Down	Across from 8532 Willow Wish	0038	CC09038EPD0364		GISB
Down	Conroy Windermere Ramp	0039	CC09039EPD0264		GISB
Down	Ridgewood & 6th Ave	0040	CC09040EPD0264		HCCIB
Down	Ridgewood & 6th Ave	0041	CC09041EPD0264		HCCIB
Down	605 E. 6th Ave	0042	CC09042EPD0264		GISB
Down	416 E. 5th Ave	0043	CC09043EPD0264		GISB
Down	416 E. 5th Ave	0044	CC09044EPD0264		HCCIB
Down	626 W 2nd Ave	0045	CC09045EPD0264		GISB
Down	626 W 2nd Ave	0046	CC09046EPD0264		GISB
Down	806 W 2nd Ave	0047	CC09047EPD0264		GISB
Down	806 W 2nd Ave	0048	CC09048EPD0264		GISB
Down	806 W 2nd Ave	0049	CC09049EPD0264		GISB
Down	109772 Bayshore Dr	0050	CC09050EPD0264		GISB
Down	109772 Bayshore Dr	0051	CC09051EPD0264		GISB

Lake Tyler CIB Locations

Attachment P1



Attachment P2

Lake	Street	Basket No.	Suntree Tag ID.	Basket Weight	Type
Lake Tyler	S.RIO GRANDE AVE	1	SC050001EPD9692	16.40	HCCIB
Lake Tyler	S.RIO GRANDE AVE	2	SC050002EPD9692	19.20	HCCIB
Lake Tyler	S.RIO GRANDE AVE	3	SC050003EPD9692	19.60	HCCIB
Lake Tyler	HOLDEN AVENUE	4	SC050004EPD9692	22.40	HCCIB
Lake Tyler	HOLDEN AVENUE	5	SC050005EPD9692	22.80	HCCIB
Lake Tyler	HOLDEN AVENUE	6	SC050006EPD9692	27.60	HCCIB
Lake Tyler	HOLDEN AVENUE	7	SC050007EPD9692	34.60	P-5
Lake Tyler	HOLDEN AVENUE	8	SC050008EPD9692	38.60	GISB
Lake Tyler	HOLDEN AVENUE	9	SC050009EPD9692	37.80	P-5
Lake Tyler	HOLDEN AVENUE	10	SC050010EPD9692	26.00	GISB