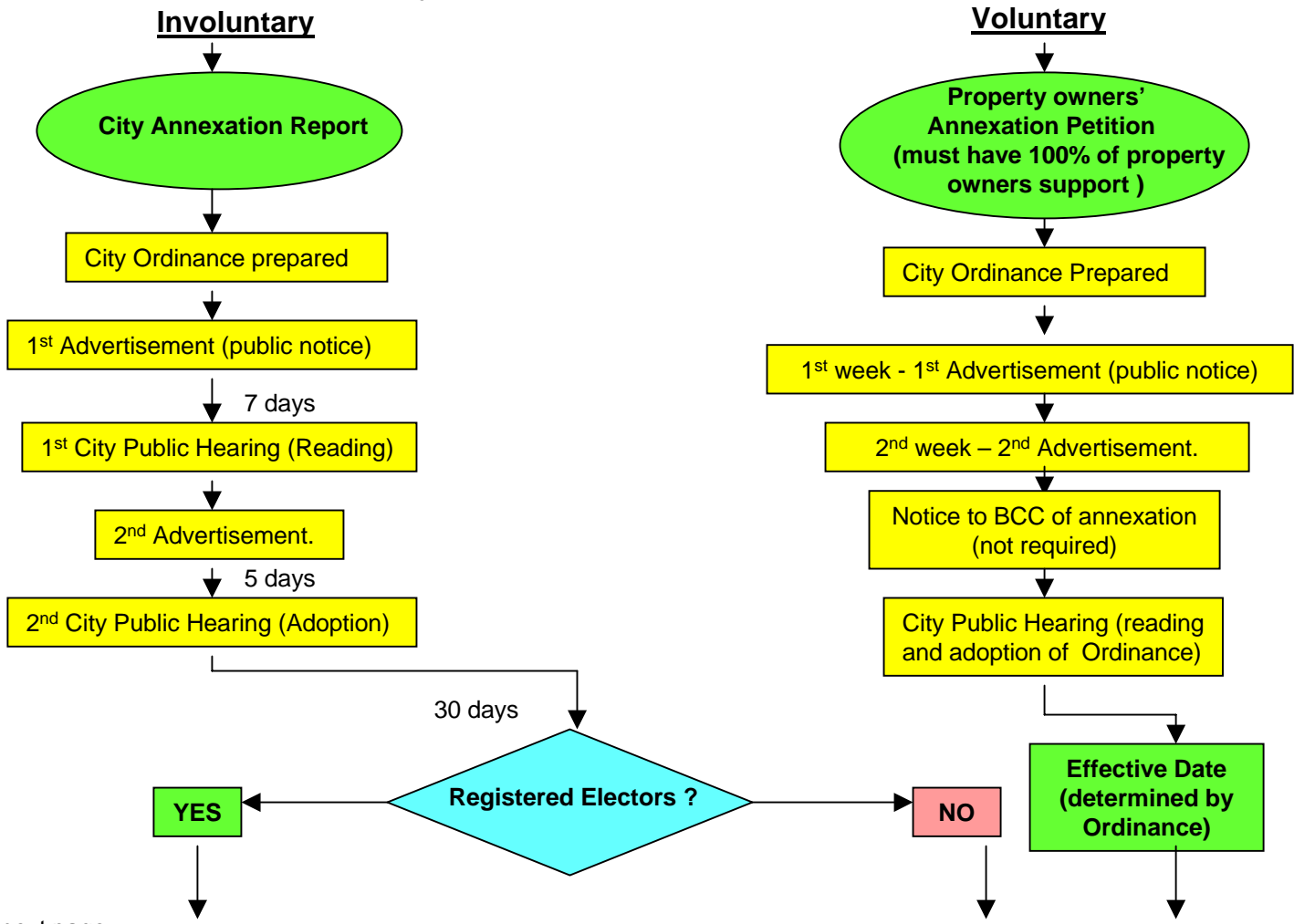


Annexation Process

Consolidation of Services Study
Commission Meeting
September 6th, 2005

ANNEXATION PROCESS



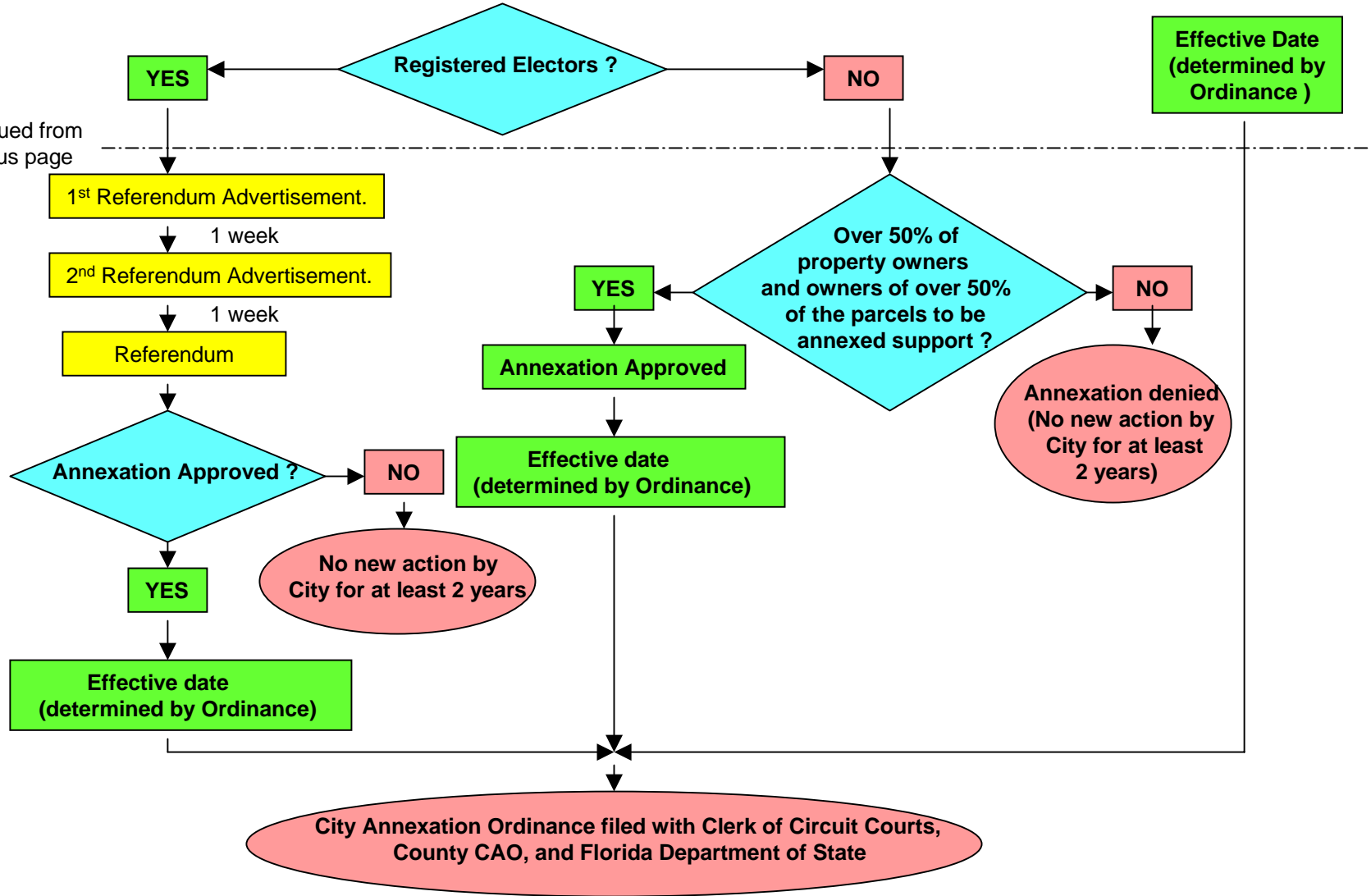
Continued on next page

ANNEXATION PROCESS continued

Involuntary

Voluntary

Continued from
Previous page



Growth Projections

Consolidation of Services Study
Commission Meeting
September 6th, 2005

GROWTH PROJECTIONS

“By 2050, the population of the seven county region will have increased by 4.2 million people.”
(Assumes key demographic indicators will be constant through 2050)

Seven County Population
(Brevard, Lake, Orange, Osceola, Polk, Seminole, Volusia)

<u>YEAR</u>	<u>POPULATION</u>
2000	3,050,000
2010	3,861,000
2020	4,607,000
2030	5,291,000
2040	6,200,000
2050	7,218,000

136% growth

Source: PennDesign CENTRAL FLORIDA
Our Region in the Year 2050

GROWTH PROJECTIONS

CITY OF ORLANDO

<u>YEAR</u>	<u>POPULATION PROJECTION</u>	<u>EMPLOYMENT PROJECTION</u>	<u>SERVICE POPULATION PROJECTION</u>
2005	219,900	230,900	351,200
2010	250,900	275,600	407,100
2015	267,900	301,000	441,900
2020	280,000	323,400	468,900
2025	291,500	343,800	493,200
2030	301,100	362,200	513,200

SERVICE POPULATION = “all those people that may have an impact on City services during any given day.” (includes tourists, homeless, and employees)

Source: University of Florida’s Bureau of Economic and Business Research (BEBR)
 “Projections of Florida Population by County 2003-2030”, Growth Management Plan 2004-2030 Growth Projections Report,
 City of Orlando Economic Development Department

GROWTH PROJECTIONS

Growth Management Plan 2004-2030 Growth Projections Report,
City of Orlando Economic Development Department

Summary of Residential Population Growth by Subarea from 2004 -2030

SUBAREA	APRIL 2004	2030	Change	Change %
Northwest	33,322	36,148	+2,826	+8.48%
Northeast	16,465	25,530	+9,065	+55.06%
Downtown	16,221	24,347	+8,126	+50.1%
Southwest	68,535	81,224	12,689	+18.52%
Southeast	73,319	132,429	+59,110	+80.62
Orlando Total	207,862	299,678	+91,816	+44.17%

Source: Growth Management Plan 2004-2030 Growth Projections Report,
City of Orlando Economic Development Department

GROWTH PROJECTIONS

ORANGE COUNTY

Year	Resident Population 1	Resident Population 2	Resident Population 3	Employment Population 1
2005	1,037,200			728,300
2010	1,167,000	1,130,550	1,139,864	832,700
2015	1,294,300			910,800
2020	1,421,100	1,370,340	1,437,418	1,020,300
2025	1,542,400			1,130,800
2030	1,654,400	1,626,620	1,797,582	1,236,100

Source: **1** -Growth Management Plan 2004-2030 Growth Projections Report,
City of Orlando Economic Development Department
2 – Orlando Economic Development Commission
3 – Orange County Planning Division