

*Orange County Parks and Recreation*

# ***It starts in Parks***

*Gifts for Tomorrow - Donations, Partnerships, Sponsorships*

January 2010





## **Our Mission**

*We provide and  
preserve quality  
Parks and Recreation  
for "All"*

## **Our Vision**

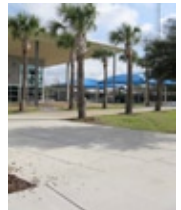
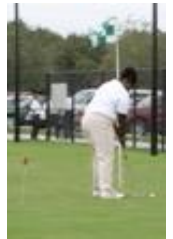
*Together we will  
meet the needs of  
our diverse community  
by providing the  
Best  
Parks and Recreation!*

*Administration Office  
4801 W. Colonial Drive  
Orlando, Florida 32808  
407-836-6200*

# Table of Contents

## Site Amenities & Furniture

Item	Page
Bike Racks, Park Bench	1
Bounce Toys	2
Grills, Picnic Tables, Water Fountains	3
Park Pets	4
Picnic Pavilions	5
Playgrounds	6
Shade Structure	7
Butterfly Garden, Dog Park Stations	10
Tree Memorial -Plaques	12



## Child Sponsorship Program 13

## Corporate Sponsorships

Platinum	14
Gold	15
Silver	15



## Accreditation Partner 17



## **Dear Prospective Donor:**

*As Orange County continues to provide quality recreation and leisure services to our growing community, it is vital to develop partnerships that help integrate connections.*



*The Orange County Parks and Recreation Division understands the importance of partnerships between Citizens, Businesses and Private Corporations in order to extend shrinking resources.*



*This Catalog is another example of maximizing our resources by appealing to Local Business, Corporations, Interested Groups and Individuals for financial assistance. Together we can provide safe parks for communities within Orange County.*



*In honor of those contributions, recognition plaques will be placed on or near the items you help provide.*

*Thank you for helping provide a recreational "Gift for Tomorrow." Your assistance is greatly appreciated.*



*Appreciatively,  
Orange County Parks and Recreation  
4801 W. Colonial Drive  
Orlando, Florida 32808*

*Phone: 407-836-6200  
Website: [www.ocfl.net](http://www.ocfl.net)*

# Table of Contents

## Site Amenities & Furniture

Item	Page
Bike Racks, Park Bench	1
Bounce Toys	2
Grills, Picnic Tables, Water Fountains	3
Park Pets	4
Picnic Pavilions	5
Playgrounds	6
Shade Structure	7
Butterfly Garden, Dog Park Stations	10
Tree Memorial -Plaques	12



## Child Sponsorship Program 13

## Corporate Sponsorships

Platinum	14
Gold	15
Silver	15



## Accreditation Partner 17



### **Bike Racks:**

***Heavy Duty bike racks make a welcome addition to parks with Recreation Centers or playground. They are installed with a concrete pad.***

***Prices start at \$375***

### **Swings**

***New Swing Set Designs add fun to long time park favorite.***

***Swing Set packages include safety surfacing and installation.***

***Swing Sets  
Range: \$900 to \$2300***



### **Park Benches**

***Heavy Duty Park Benches made of expanded metal with plastic coating are long lasting and with contour seating, they are comfortable! Installed on a concrete pad.***

***Benches  
Range from \$450 to \$600***



## Spring Toys

**What Child wouldn't love to bounce on a Bumble Bee or fly on a Ladybug!**



**These Spring Toys would make a welcome addition to any Totlot.**

**Price includes installation and site preparation.**

**Prices Range from \$800 to \$1,200**





### Grills

**Heavy-Duty Charcoal grills are mounted on steel posts, have adjustable grill levels and are secured to a concrete pad.**



**Grills come in two sizes: Small for Family picnics and Group for Picnic Shelters.**

**Grills can be located adjacent to a picnic shelter or other appropriate area.**

**Small: \$350 Group: \$600**

**Picnic tables are made with galvanized steel legs and pressure treated anchored to a concrete pad. Site requires drainage preparation and a concrete pad.**



**Picnic Tables: \$600**



**Man's best friend can enjoy his own drinking fountain with this combo pedestal fountain. Includes steel supports securely anchored on a concrete pad.**

**Prices Range from \$900 to \$1200**

## Park Pets

*These delightful pieces of park and garden art are used as a greeter, climb-on pal, protector or just a friend to hug or hang out with.*

*The Pets can be placed within a playground setting, a garden, indoors or outdoors.*



***These friendly pets listen indefinitely and never bother anyone!***



## ***Picnic Pavilions***



***Commemorate a memory with picnic pavilion or rest stop.***

***Requires site preparation and concrete foundation. Commemorative Plaques are available.***

***Prices Range from:  
\$10,000 to \$40,000***



**Playgrounds  
come in  
many sizes and  
shapes.**

**Choices range from  
adding a climbing  
wall to providing a  
complete  
playground.**

**We have Design Staff to help  
you with any situation or  
desire**



**Prices range from  
\$5,000 to \$75,000**





## Shades Structures



*Keeping our children and ballplayers cool and shielding them from the Florida Sun.*

*Prices Range from \$3,500 to \$25,000*



## **Butterfly Gardens**



***The watching of Butterflies has become very popular in our parks. Would you like to provide for a new one or the maintenance of a new or existing Butterfly Garden?***

**Cost for a New Butterfly Garden:**  
**Approximately \$5,000**

**Monthly Maintenance Cost:**  
**Approximately \$2,000 Annually**

## **Dog Parks**

***Our Dog Parks have been a tremendous addition to our park system.***

***Residents are taking their Dogs for play in our numerous fenced and gated dog play areas.***

***Taking care of our Dog Park amenities and stations have become part of our daily routine.***

**New Doggie Station:**  
**Approximately \$250**

**Litter Bag Replacement Cost:**  
**30-Roll Case: Approx. \$200**





## **Tree Memorial with Plaques**

***Citizens wishing to plant trees in Orange County Parks in Memory of Family members and friends may do so by contacting Orange County Parks and Recreation Administration Office.***

***Guidelines will be given to you and a written request by the donor will be need to be submitted and approved prior to planting.***

**Memorial Plaques**  
***(Approx. 8" x 10")***  
***furnished by the donor will be placed by the Memorial Tree.***

**Approximate Cost for a Memorial Plaque:**  
**\$135.00**

**Cost for a Memorial Tree:**  
***\$235 to \$325 depending on the species and size of the tree.***

## **Child Sponsorship Program**

**Orange County Parks and Recreation has over 10,000 children involved in the County's Recreation Programs.**

**We offer Sports Programs, such as,**

- **Basketball**
- **Football**
- **Soccer**

**As well as after school and summer camp programs.**

**We have many children who would like to participate but need monetary support.**



**If you would like to sponsor a child within one of our programs, please contact:**

**Orange County Parks and Recreation Administration Office at: 407-836-6200.**



**Here are some examples of our Program Sponsorships:**

- **Sports League: \$40 per season**
- **Afterschool Program: \$30 per week**
- **Summer Camp: \$80 per week**

---

## **Corporate Sponsorship Levels**

### **Platinum** **\$200,000 Donation**

*Donors will receive:*

- o The opportunity to present check to Orange County Board of Commissioners.*
  - o A Letter hand-delivered to each of the Orange County Commissioners applauding your sponsorship participation*
  - o Opportunity to have representative "Kick-off" the event or function of your choice*
  - o Front page recognition through logo placement and feature story on Parks and Recreation website for 1 year.*
  - o Permanent recognition at one park site.*
  - o Permanent recognition at Parks Administration Building*
  - o Banner recognition sponsorship on-site for 1 year*
  - o Logo prominently displayed on any promotional clothing*
  - o Logo prominently displayed on any awards*
  - o Logo prominently displayed on all sponsored program literature*
  - o The opportunity to have representative present awards and promotional clothing*
  - o On-site display area at event or function of your choice.*
  - o Recognition in all radio and television promotions for the sponsored event or program.*
-

---

## **Corporate Sponsorship Levels - Cont.**

### **Gold**

**\$100,000 Donation**

Donors will receive:

- *The opportunity to present check to Orange County Board of Commissioners.*
- *Opportunity to have representative "Kick-off" the event or function of your choice*
- *Permanent recognition at one park site.*
- *Front page recognition through logo placement and feature story on Parks and Recreation website for 1 year.*
- *Banner recognition sponsorship on-site for 1 year*
- *Logo prominently displayed on any promotional clothing OR awards fro the sponsored event/program*
- *The opportunity to have representative present awards and promotional clothing*
- *On-site display area at event or function of your choice.*
- *Recognition in all radio and television promotions for the sponsored event or program.*

### **Silver**

**\$50,000 Donation**

Donors will receive:

- *Opportunity to have representative "Kick-off" the event or function of your choice*
  - *Front page recognition through logo placement and feature story on Parks and Recreation website for 1 year.*
  - *Banner recognition sponsorship on-site for duration of event/program*
  - *Logo prominently displayed on any promotional clothing OR awards fro the sponsored event/program*
  - *The opportunity to have representative present awards OR promotional clothing*
  - *VIP Parking at event or function of your choice*
  - *Recognition in all radio and television promotions for the sponsored event or program.*
-

## **Accreditation Partner \$5,000**

*This is an opportunity to assist the Parks and Recreation Division in obtaining accreditation through the Commission for Accreditation of Park and Recreation Agencies.*

*This donation benefits the Orange County Parks and Recreation Division and its users for the following reasons:*

- o Being accredited provides validation of well administered services in accord with approved professional practices.*
- o Accredited Parks and Recreation Agencies benefit the community by ensuring effective and efficient services, creating an environment for citizen engagement, and regular review of operations, policies, and procedures to promote continual improvement.*

*Accreditation Partners will be recognized in Parks and Recreation accreditation publications, signage and electronic media, to the Board of County Commissioners and at accreditation reception galas with local and state officials as well as community and business leaders.*

---